

Urban Forest Strike Team

AN INTRODUCTION AT THE
ASSOCIATION OF COUNTY COMMISSIONS OF ALABAMA
89TH ANNUAL CONVENTION
AUGUST 24, 2017

DALE DICKENS, URBAN FORESTRY COORDINATOR
ALABAMA FORESTRY COMMISSION



Alabama Forestry Commission

Many of you know the
Alabama Forestry
Commission
because of our
responsibility
for wildland fire fighting.



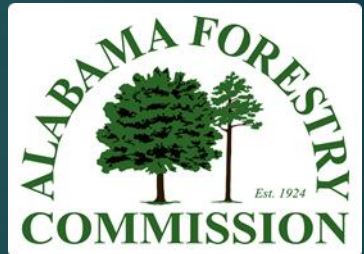
October –November 2016 Drought and Wildfire Numbers

- ▶ 2,191 Wildfires Suppressed
- ▶ 29,431 Acres Burned
- ▶ 13,435 Hours Logged by 183 AFC Firefighters in 61 days
- ▶ Cost to Alabama Tax Payers \$1.5 Million Dollars

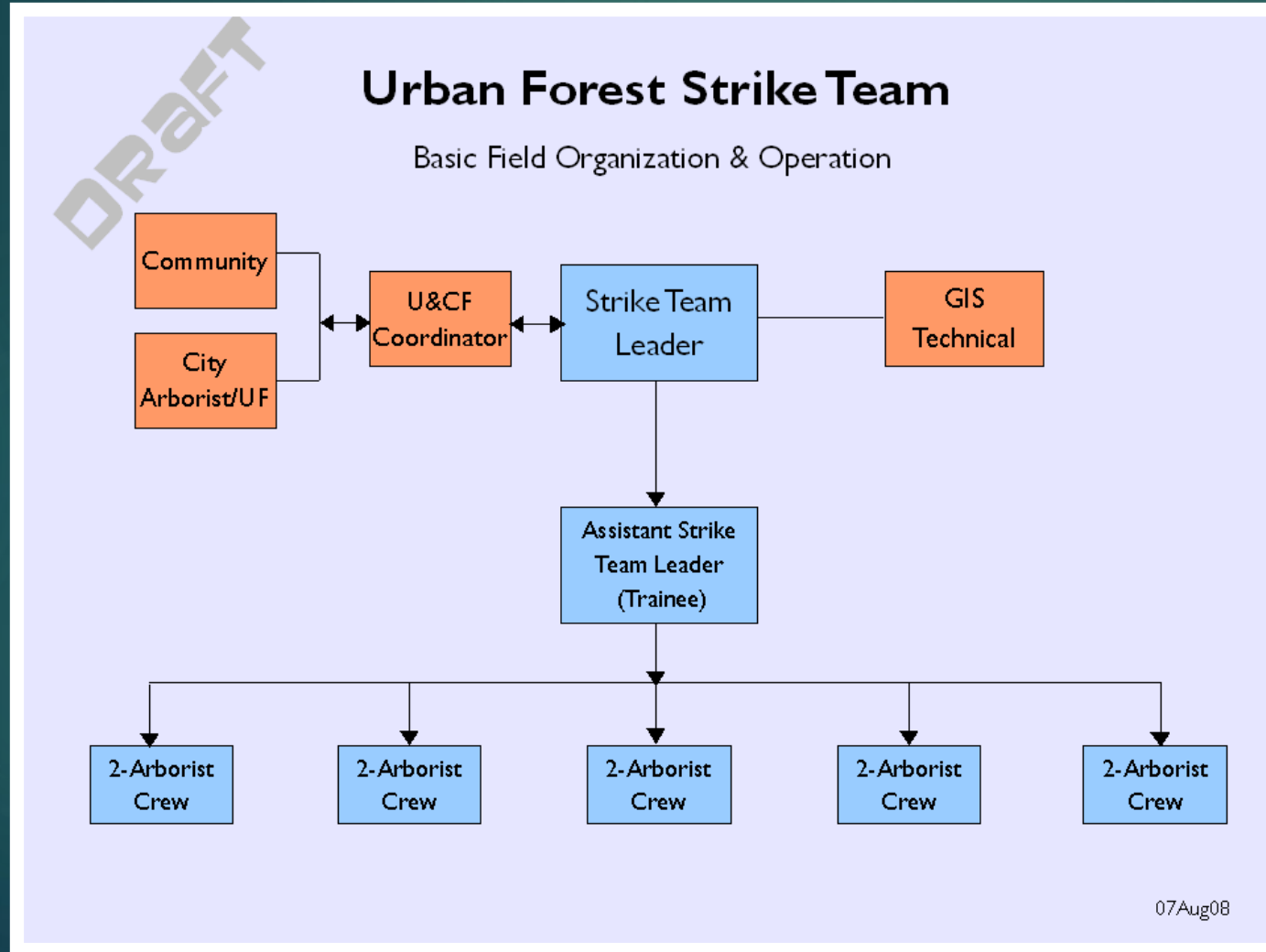


Urban Forest Strike Team

- ▶ A disaster response and recovery project
- ▶ Provides expert arborist-recommended tree actions and mitigation with debris estimation
- ▶ Responded to more than 11 disasters in 11 states in the eastern US since its inception

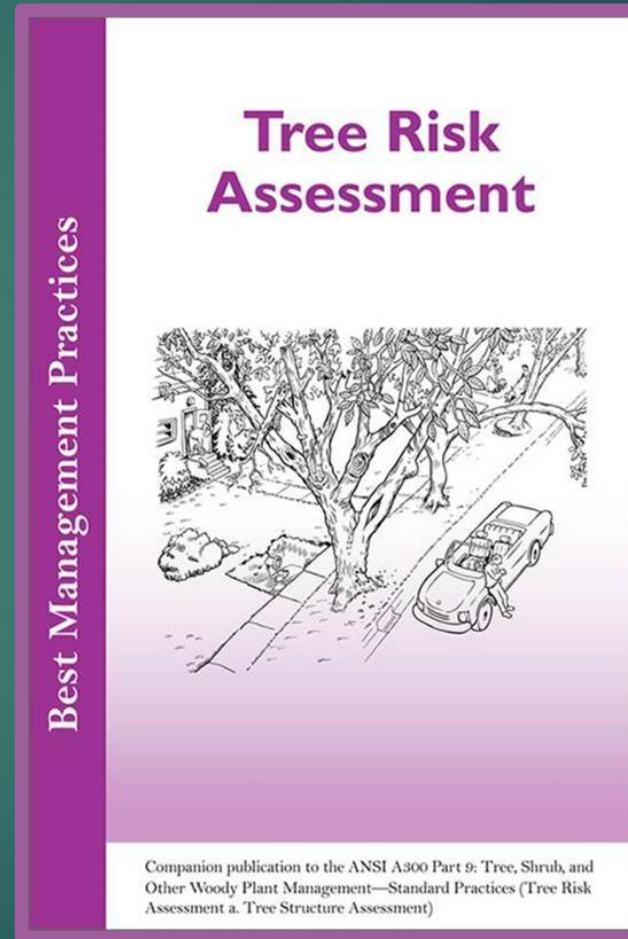


Urban Forest Strike Team is based on the Incident Command System (ICS)



Urban Forest Strike Team

- ▶ Rapid assessment by professional arborists determining trees to:
 - ▶ Leave
 - ▶ Prune
 - ▶ Remove
 - ▶ Immediate action



Urban Forest Strike Team

- ▶ Rapid assessment by professional arborists determining
 - ▶ Debris Estimation (cu.ft.)
 - ▶ Location (GPS) of major tree damage



Limb Removal

According to Public Assistance Program and Policy Guide
FP 104-009-2 April 2017

Only if it is 2 inches or more at the break...

Not this kind of
hanger!



Limb Removal

According to Public Assistance Program and Policy Guide
FP 104-009-2 April 2017

Only if it is 2 inches or more at the break...

But this kind of
hanger!



Tree Removal

According to Public Assistance Program and Policy Guide
FP 104-009-2 April 2017

You may be reimbursed for removing the tree if it:

- ▶ Has a split trunk;
- ▶ Has a broken canopy; or
- ▶ Is leaning at an angle greater than 30 degrees.
- ▶ Has 50 percent or more of the root-ball exposed

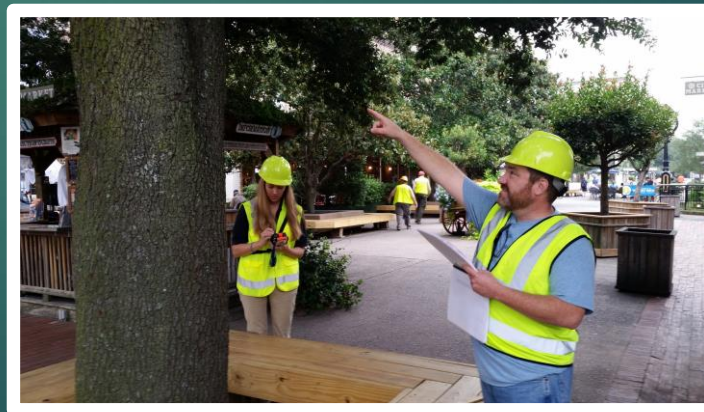


Urban Forest Strike Team

FEMA reimbursement class
(descriptive) in the Public
Assistance Attributes

Dawson Springs 4-H Camp

FEMA_MGT	Total
Non-FEMA	67
Prune (>2" Limbs)	361
Remove (>30 Lean)	10
Remove (>50% Loss)	267
Remove (Heartwood)	47
Grand Total	752



Data Provided

Madisonville Trees: Ice Storm

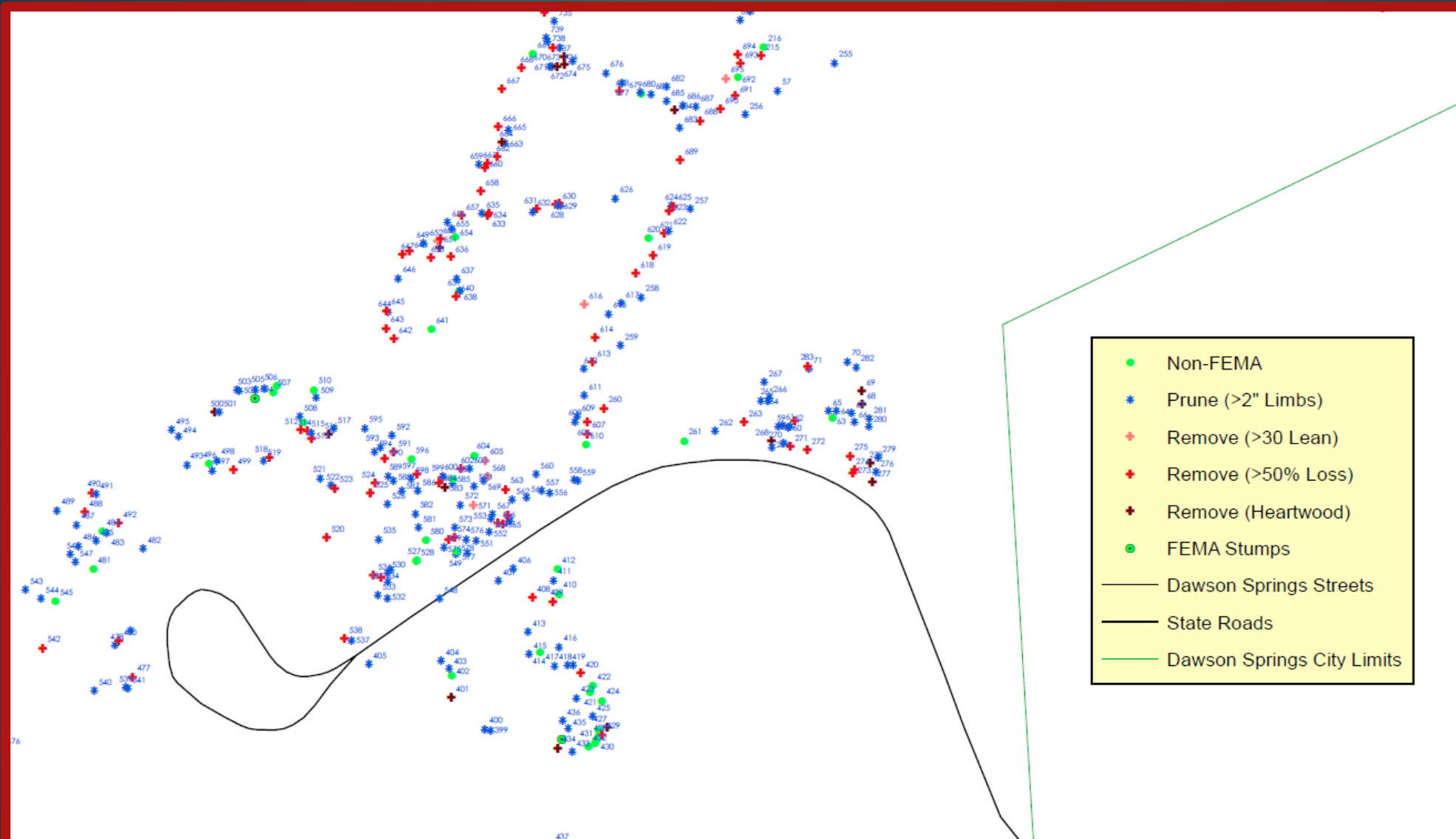
All Trees: FEMA Remove, FEMA Prune, and Non-FEMA

<u>MapNo</u>	<u>Species/Genus</u>	<u>DBH</u>	<u>Risk Recommendation</u>	<u>FEMA Debris Classification</u>
Boy Scout Camp				
1	Sycamore	32	Remove (Hazard)	Remove (>50% Loss)
2	Cherry	20	Remove (Hazard)	Non-FEMA
3	Sycamore	14	Remove (Hazard)	Remove (>50% Loss)
4	Ash	10	Remove (Hazard)	Remove (>50% Loss)
5	Cherry	10	Remove (Hazard)	Remove (>50% Loss)
6	Sycamore	18	Prune (Hazard)	Prune (>2" Limbs)
7	Sycamore	16	Prune (Hazard)	Prune (>2" Limbs)
8	Sycamore	22	Prune (Hazard)	Prune (>2" Limbs)
9	Maple	6	Remove (Hazard)	Remove (>50% Loss)
10	Cherry	6	Remove (Hazard)	Remove (>50% Loss)
11	Sycamore	20	Prune (Hazard)	Prune (>2" Limbs)
12	Other	10	Remove (Hazard)	Remove (>30 Lean)
13	Other	8	Prune (Hazard)	Prune (>2" Limbs)
14	Other	8	Prune (Hazard)	Prune (>2" Limbs)
15	Other	10	Remove (Hazard)	Remove (>30 Lean)
16	Other	12	Remove (Hazard)	Remove (>50% Loss)
17	Other	18	Remove (Hazard)	Remove (>50% Loss)
18	Maple	18	Remove (Hazard)	Remove (>50% Loss)
19	Maple	16	Remove (Hazard)	Remove (>50% Loss)
20	Elm	6	Remove (Hazard)	Remove (>50% Loss)
21	Other	12	Remove (Hazard)	Remove (>50% Loss)
22	Other	6	Remove (Hazard)	Remove (>50% Loss)
23	Other	6	Remove (Hazard)	Remove (>50% Loss)
24	Other	10	Prune (Hazard)	Prune (>2" Limbs)
25	Sycamore	8	Remove (Hazard)	Remove (>50% Loss)
26	Ash	12	Prune (Hazard)	Prune (>2" Limbs)
27	Sweetgum	14	Prune (Hazard)	Prune (>2" Limbs)
28	Maple	16	Remove (Hazard)	Remove (>50% Loss)
29	Maple	30	Remove (Hazard)	Remove (>50% Loss)
30	Maple	18	Prune (Hazard)	Prune (>2" Limbs)
31	Elm	8	Remove (Hazard)	Remove (>50% Loss)
32	Ash	12	Remove (Hazard)	Remove (>50% Loss)
33	Hickory	8	Remove (Hazard)	Remove (>50% Loss)
34	Pine	14	Prune (Hazard)	Prune (>2" Limbs)
35	Pine	14	Prune (Hazard)	Prune (>2" Limbs)

Urban Forest Strike Team: Kentucky



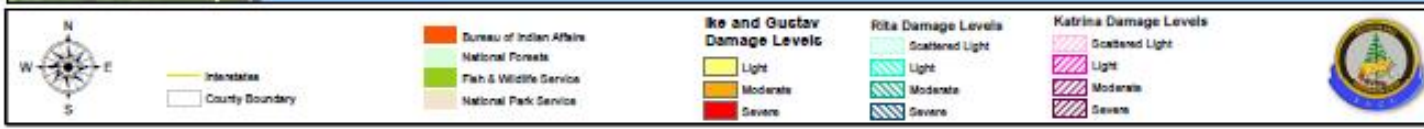
Trees Mapped by Mitigation Action



Hurricanes

Hurricane Ike, Gustav, Rita, Katrina - Damage Areas

Wednesday, September 17, 2008 11:44:08 AM



Galveston Response 2008

Initial Assessment

September 17, 2008

- 89 removals in Historic Districts
- 35 removals on Broadway

April 2009 Assessment

- Estimated 10,800 right of way trees dead or dying
- Additional 30,000+ trees on private property dead or dying.
- 39% of total trees and 47% of tree canopy
- Some neighborhoods greater than 90 canopy loss



Tornados

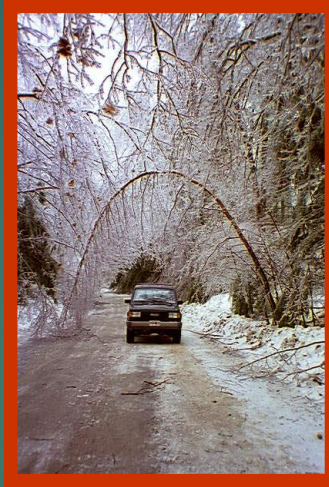
Tuscaloosa, AL 2011



Eutaw, AL 2008



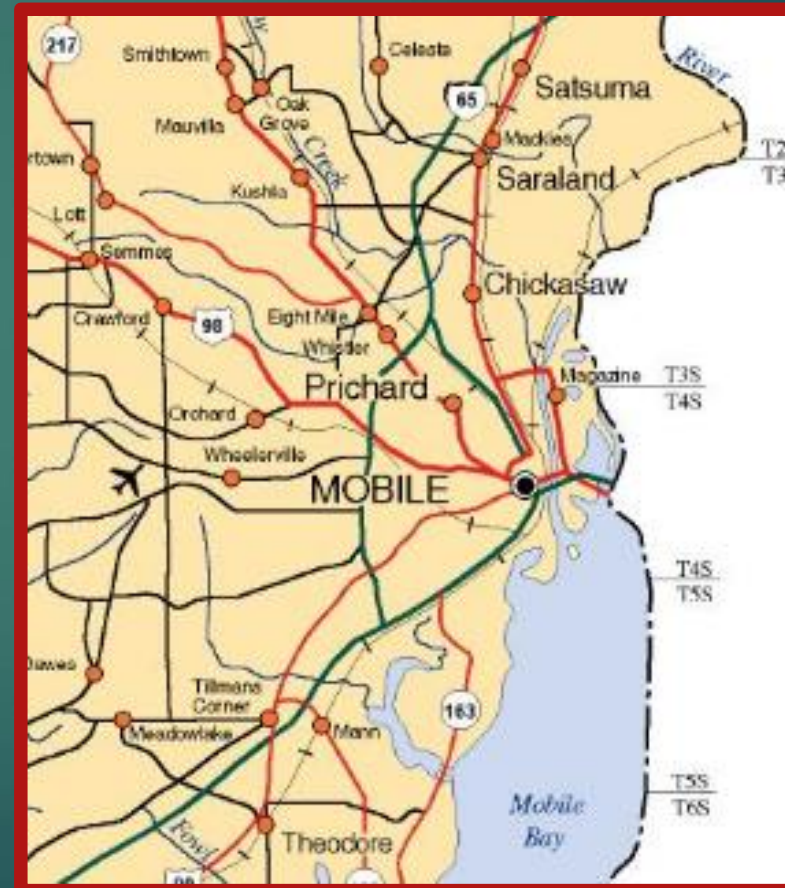
Ice and Snow Storms Also Cause Tree Damage



2017 Governor's Hurricane Exercise Joint UFST Training Exercise in Mobile, AL May 8-9th

Teams completed training from the Division Operating Center in the Alabama Department of Transportation Office in Mobile.

23 Team Members Attending
From 7 states.



UFST Objectives

1. Training for UFST members and continuous improvement of UFST system
2. Connect with AEMA and other State disaster response units, increasing awareness of the Urban Forest Strike Team (UFST)
3. Test UFST use of Emergency Management Assistance Compact (EMAC).
4. Interaction with existing GIS systems for both AEMA, local or division EOC, and the UFST
5. Initiate the Southern Region Interstate Smart Device Network (ISDN) for smart device sharing & availability.



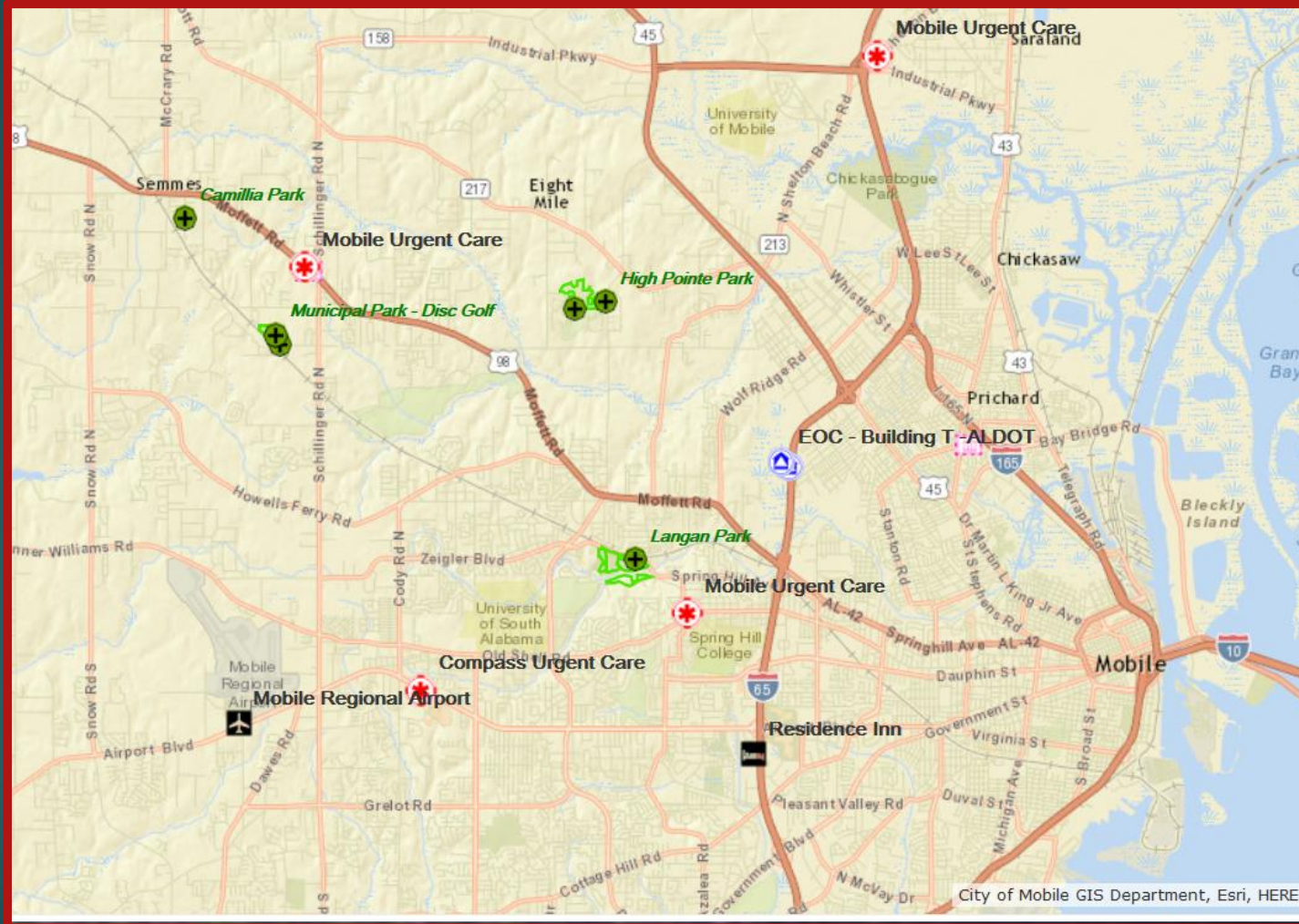
Locations



Mobile
Prichard
Semmes

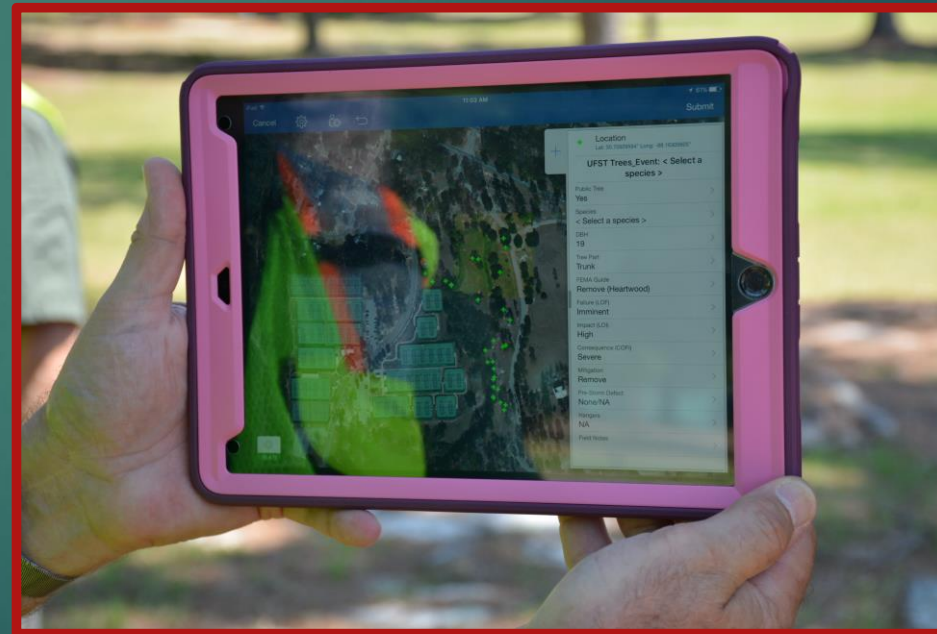


Locations



UFST Training Exercise

Measurements were taken using GIS (ArcGIS Online), data collection software (ESRI Collector), and hardware (tablet and phone smart devices).



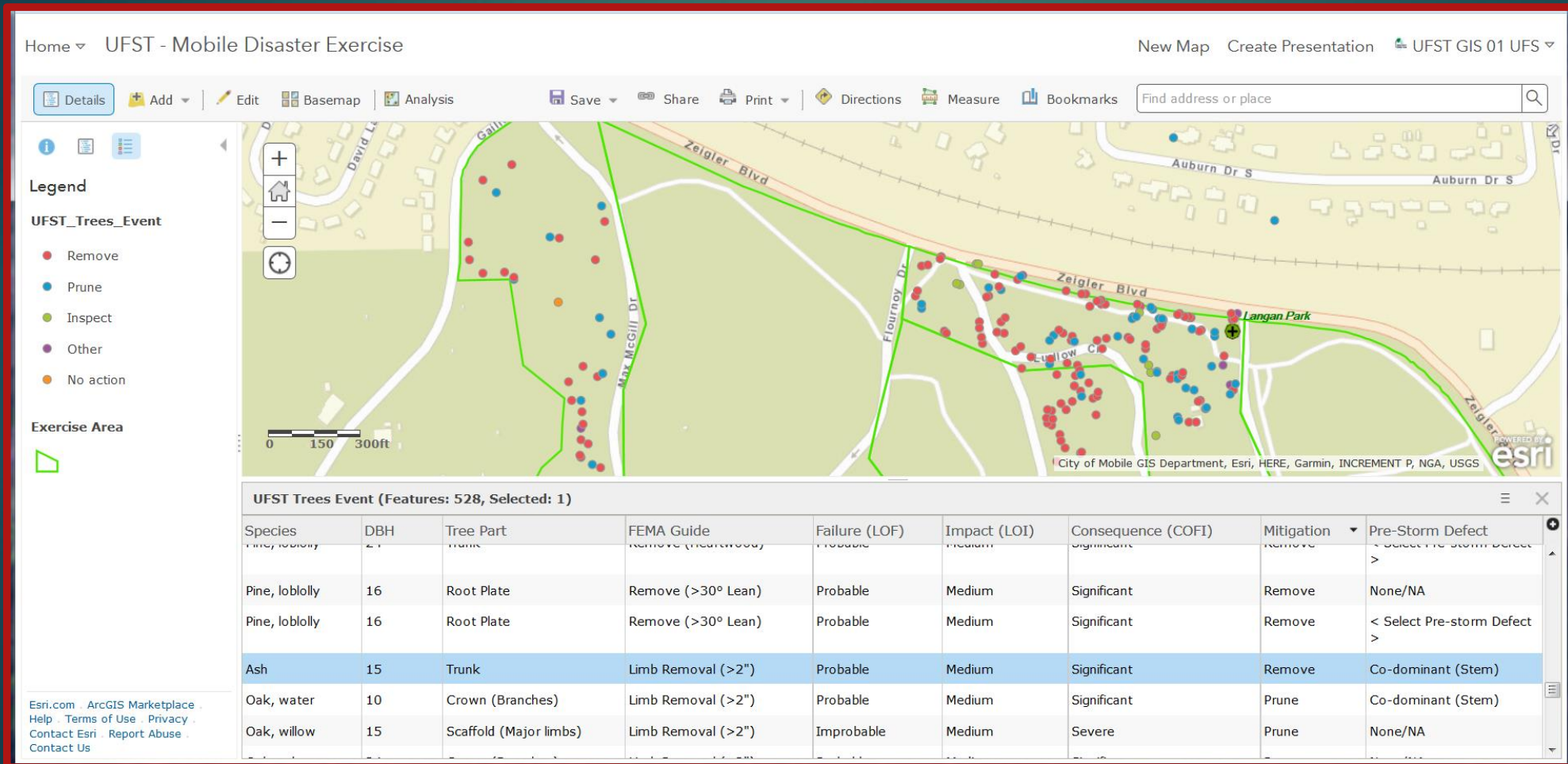
Tree Size Measured for Debris Estimation



Randomly Assigned Tree Damage



Data Analyzed and Presented to the Cities



Results from 2017 Governor's Hurricane Exercise UFST Training

1. Twelve Urban Forestry Strike Team Technical Specialists were trained, and the system improved by upgrading communication guidelines
2. Met with AEMA and other State agencies numerous times building a working relationship with the UFST.
3. Tested UFST use of Emergency Management Assistance Compact (EMAC).
4. Adjusted existing UFST GIS systems to interact better with AEMA and other partners.
5. Initiated the Southern Region Interstate Smart Device Network (ISDN) for smart device sharing & availability.



Contact Information and Questions?

Dale Dickens

(334) 240-9360

dale.dickens@forestry.
alabama.gov

