

# One Sunday in March

in Lee County, Alabama





























LSM/Brett Adair  
Beauregard, AL  
March 3, 2019















**BREAKING NEWS**  
**DEATH TOLL IN LEE COUNTY IS 22**  
DEADLY TORNADO







**EMA** EMERGENCY OPERATIONS CENTER


EMERGENCY DISASTER SERVICES

**THE SALVATION ARMY**  
**EMERGENCY DISASTER SERVICES**  
ALABAMA - LOUISIANA - MISSISSIPPI DIVISION  
MONTGOMERY, AL



DOING THE MOST GOOD





# LEE COUNTY ALABAMA




MARCH 3, 2019





# 2:13 PM

- Response
  - Site Conditions
  - Victim Concerns
  - Survivor Concerns
  - Command and Control
  - Search and Rescue
  - Resident ID and Status
  - Mutual Aid Request
  - Multi-Agency Management
- 



# First 18 Hours

- Daylight and Weather
- Resources
- Asset Request and Delivery
- Equipment Staging
- Media Staging and Briefings
- Area Security
- Volunteer Coordination
- Transition

ALEA STATE TROOPER  
32°28'21.40" N 85°22'00.21" W  
SPD 65 KTS HDG 38 °T  
ALT 1005 FT



32°28'32.62" N 85°21'57.40" W  
SPD 167 MPH HDG 42 °T  
ELV 400 FT SLT 448 FD

00:04:13  
00:37:00

LRP TARGET  
32°28'29.85" N  
85°22'00.27" W  
ELV 400 FT  
SLT 514 FD

LRP ARMED  
LP C ARMED

HDBO

GEOPONT  
INS NAV 0.25°

EXP AUT

W 82 FT N



SLAVE ACTIVE

ALEA STATE TROOPER  
32°31'08.63" N 85°11'52.83" W  
SPD 68 KTS HDG 58 °T  
ALT 1009 FT

68°T  
N E

32°31'10.93" N 85°11'46.27" W  
SPD 61 MPH HDG 208 °T  
ELV 387 FT SLT 394 YD

00004710  
00:44:52

LPF TARGET  
32°33'29.85" N  
85°33'00.27" W  
ELV 408 FT  
SLT 514 YD

LPF ARMED  
LP C ARMED

HD00

GEOPONT  
MS NAV 0.35°

EXP AUT

W N 61 FT



SLAVE ACTIVE

MALEA STATE TROOPER  
32°28'55.85" N 85°20'24.71" W  
SPD 69 KTS HDG 57 °T  
SLT 1065 FT

61°T  
N E

32°29'00.74" N 85°20'14.42" W  
SPD 56 MPH HDG 187 °T  
SLT 401 FT SLT 408 YD

03704719  
08:38:28

LAF TARGET  
32°28'59.85" N  
85°20'00.27" W  
ELV 408 FT  
SLT 814 YD

LAF ARMED  
LP C ARMED

HOES

GEOPONT  
MS MAY 0.28°

EXP AUT

W N 50 FT



SLAVE ACTIVE

ALEA STATE TROOPER  
32°28'09.08" N 85°23'05.59" W  
SPD 76 KTS HDG 65 °T  
SLT 1089 FT

348°T  
N N

32°28'20.43" N 85°23'08.45" W  
SPD 18 MPH HDG 170 °T  
ELV 408 FT SLT 458 YD

08:04:19  
08:36:18

LRF TARGET  
32°29'29.85" N  
85°39'00.27" W  
ELV 408 FT  
SLT 514 YD

LRF ARMED  
LRF C ARMED

HDED

GEOPNT  
148 MAG 0.38°

EXP AUT

W N 140 FT



SLAVE ACTIVE

32°29'30.59" N 85°18'05.56" W  
SPD 68 KTS HDG 63 °T  
ALT 1084 FT



32°29'39.94" N 85°17'53.51" W  
SPD 0 MPH HDG --- °T  
ELV 400 FT SLT 500 YD

08:04:18  
08:40:15

LRP TARGET  
32°23'00.05" N  
85°39'00.27" W  
ELV 400 FT  
SLT 514 YD

LRP ARMED  
LP C ARMED

HDCC

GEOPONT  
INS MAG 0.33°

EXP AUT

W N 160 FT



SLAVE ACTIVE

MALEA STATE TROOPER  
32°32'47.30" N 85°06'46.26" W  
SPD 68 KTS HDG 51 °T  
ALT 1987 FT

80°T



32°32'49.13" N 85°06'34.08" W  
SPD 12 MPH HDG 102 °T  
ELV 385 FT SLT 418 YD

00104719  
08-19-00



LRF TARGET  
32°28'23.85" N  
85°33'00.27" W  
ELV 408 FT  
SLT 514 YD

LRF ARMED  
LRF C ARMED

HDB3

GEOPOINT  
INS MAY 2.40°

EXP AUT

W N 47 FT

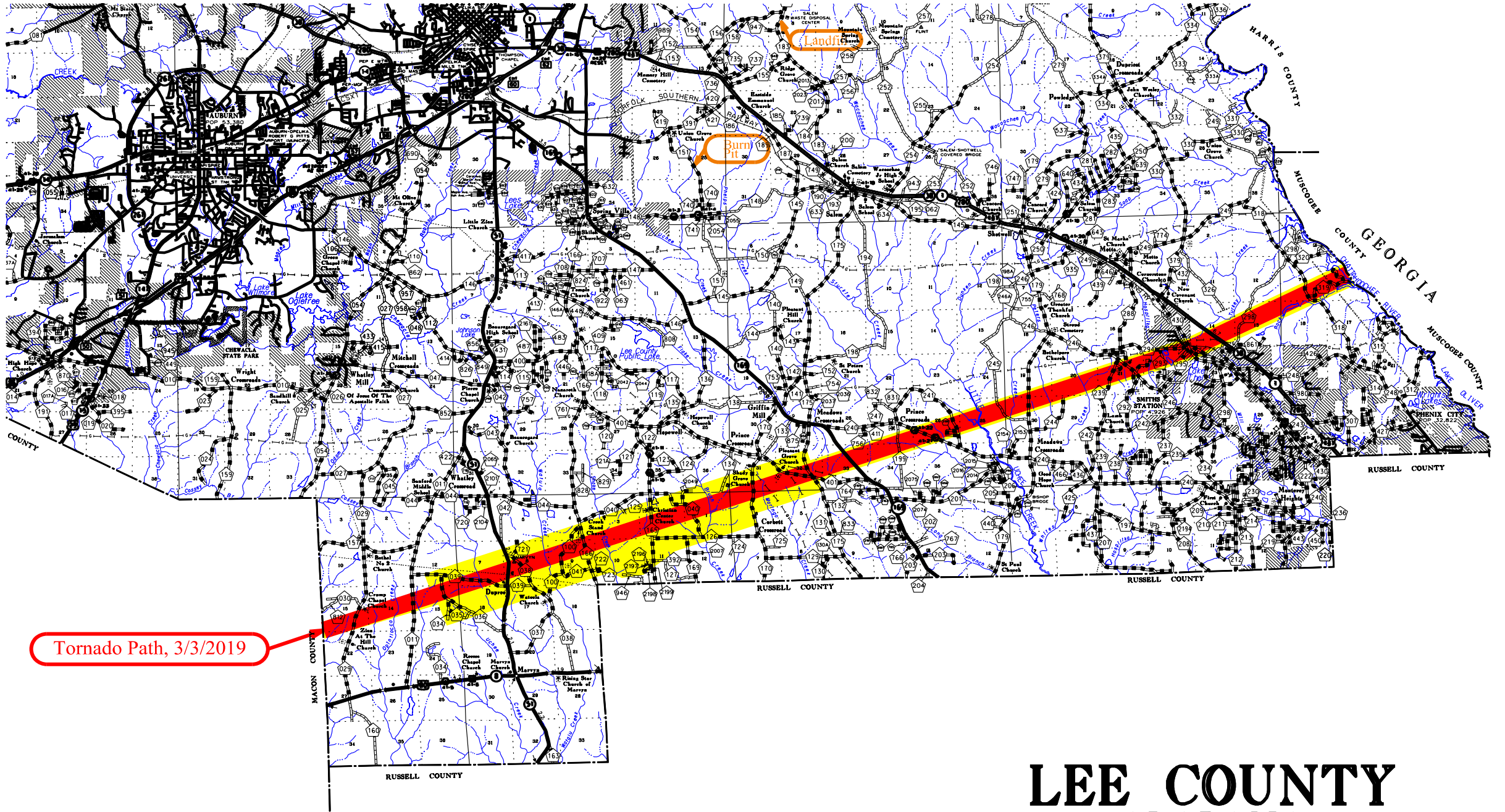


SLAVE ACTIVE



March 3<sup>rd</sup>, 2019





Tornado Path, 3/3/2019

# LEE COUNTY ALABAMA







03/05/2019 15:07



03/09/2019 10:49



03/09/2019 09:38





03/04/2019 15:08



CAT

Thompson  
Heavy Rents

MACK

2051

02/08/2010 11:56



563

Chambers

OH BODIES

2275

2266

















DISASTER RELIEF







DISASTER RELIEF

DISASTER RELIEF









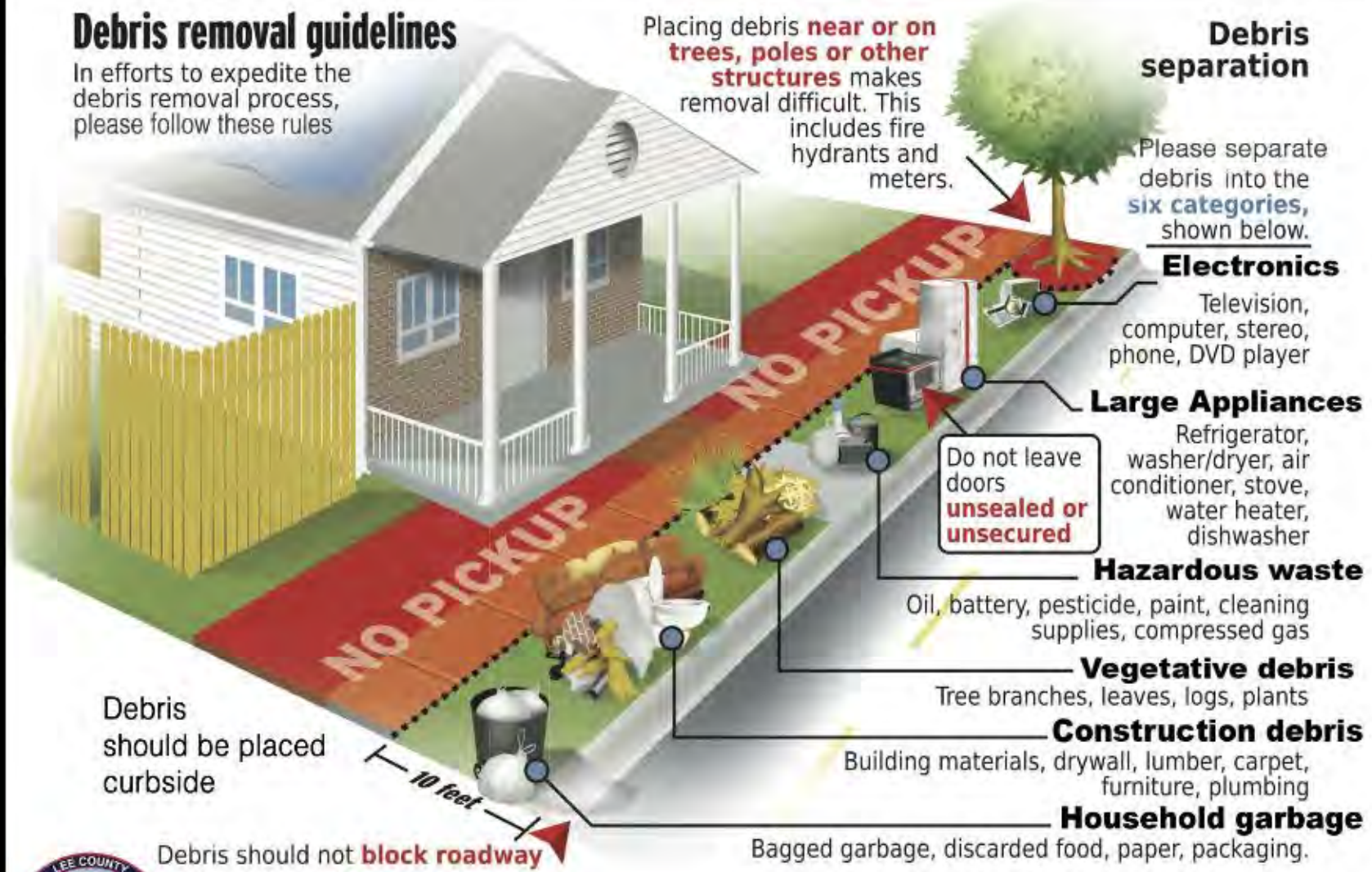




Debris must be placed on the right-of-way on the edge of the road to be picked up.  
Sort debris into piles by type. **DO NOT MIX** construction debris with trees/limbs.

### Debris removal guidelines

In efforts to expedite the debris removal process, please follow these rules



**Lee County  
Emergency Management Agency**





Thank You



# Alabama EMA

---

Ricky Adams

Director Field Operations

and

Lisa Castaldo

Recovery Division

**August 21, 2019**

# AEMA

---





# Field Operations Responsibilities

---



- We assist County EMA's in blue sky and gray sky activities.
- Provide timely and accurate information for Senior elected officials and the general public.
- Manage the flow of State/Federal/Private resources, services, and personnel to the incident.
- Establish and provide unified response, recovery, command, and control.

# About AEMA

---



**March 3, 2019**

- Reports from the National Weather Service indicated the rapid intensification of severe weather and tornadoes
- Shortly after 2 PM reports of significant damage and possible fatalities in Lee County.
- I made the decision to respond along with my Division D Coordinator Monique Smith to offer assistance to Lee County EMA and First Responders.
- We met with the Lee County EMA Director. Monique assisted with EOC activities and I was dispatched to the site along with Chris Darden Chief Meteorologist Birmingham to provide an assessment and situational awareness for the EOC.



# About AEMA

---

March 3, 2019

## What did we find? First Glimpse inside of the disaster.

- The traffic was unreal (both emergency and non-emergency).
- The damage was indescribable and easily overwhelming.
- Lee County Sheriff's Office, ALEA, Fire Personnel and many other First Responders were on scene.
- My first stop was a small fire Department in Beauregard with an amazing Incident Command Operation right in the middle of multiple victims being transferred to awaiting ambulances.
- County Road 51 almost completely blocked with First Responders and volunteers clearing a path



# About AEMA

---

March 3, 2019

## What did we find? First Glimpse inside of the disaster.

- We do what we are trained to do in a crisis. We found First Responders in need of resources and an EMA in need of situational awareness.
- What was needed in the first hours? Generators; Portable lighting; Coolers; Chairs; Command Post/Staging area; Larger Maps; Food/facilitation for Incident Command; Additional people and management of volunteers.

# About AEMA

---



# About AEMA

---



# About AEMA

---



# About AEMA

---



## **Vision**

Building resiliency for tomorrow, strength for today,  
applying lessons from yesterday for a better Alabama

## **Mission**

To support our citizens, strengthen our communities,  
and build a culture of preparedness through a  
comprehensive Emergency Management Program



# Agenda

---



- **Community Long-Term Recovery**
- **Voluntary Organizations Active in Disasters (VOAD)**
- **Long-Term Recovery Committees (LTRCs)**
- **Roles**

# Community Long-Term Recovery

---



- Inclusive and individualized but with common elements across communities, States, and the Nation
  - Resource Management
  - Case Management
- Not “One Size Fits All” communities are unique and recovery is local
- Representative of the whole community
- Process – how it works
  - Local Community owned/managed
  - State and Federal government supported
- Essential part of a community’s overall recovery process (works in conjunction with the Public Assistance and Hazard Mitigation Programs)

# VOAD

---



## Voluntary Organizations Active in Disasters

- Cooperation, Communication, Coordination, and Collaboration
- Pre-disaster/ongoing
- Affiliation of organizations with missions to support preparedness, response and recovery
- Provides a mechanism to maximize and leverage capabilities during all phases of disasters (can also expand to include state and national VOAD partners if needs exceed local capabilities)
- [www.nvoad.org](http://www.nvoad.org) – sample organizing documents
- Alabama VOAD – technical assistance for local VOAD development technical assistance – Brooke Mills, State Voluntary Agency Liaison  
[Brooke.Mills@ServeAlabama.gov](mailto:Brooke.Mills@ServeAlabama.gov) or Lana Mummah, ALVOAD President  
[iana@alvoad.org](mailto:iana@alvoad.org)

# LTRC

---



## Local Long-Term Recovery Committee(s) (LTRC)

- An LTRC is formed after a disaster to coordinate (not necessarily combine) the resources, organizations, volunteers, donations that flow into a community after a disaster
- Mechanism to pursue recovery funding (public and private)
- LTRC can be established as a non-profit or an existing agency can serve as the fiscal agent
- Hub for communication and coordination
- Includes many of the VOAD partners but is typically a broader coalition of local organizations, non-profits, educational partners, and businesses
- Once a case management process is established, the LTRC reviews cases to assist survivors by leveraging resources

# LTRCs and the Public Sector ---

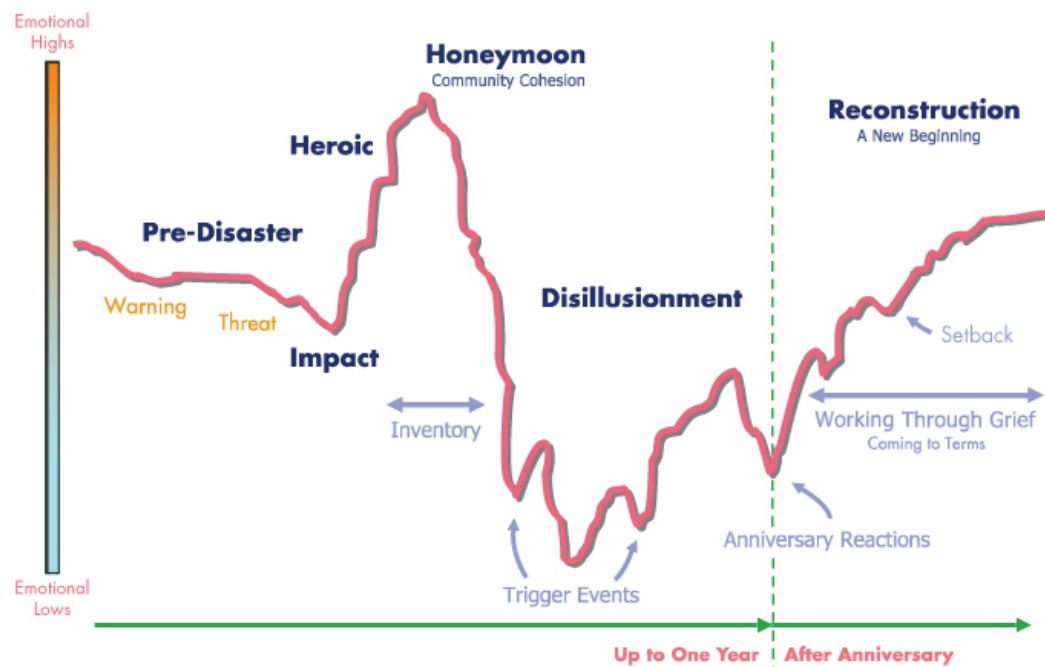


- LTRCs are community-owned – governments role (local, state, and federal) is supportive not directive
- LTRCs should coordinate with (not report to) local government to navigate setbacks, celebrate successes and keep everyone informed of progress towards recovery
- State and Federal partners can provide ongoing Technical Assistance to local government and LTRCs (State and Federal Voluntary Agency Liaisons (VALs))
- State and Federal Funding (sometimes....)



# Recovery is Hard Work....

- Recovery not a linear process
- Depending on the scale of the event LTRCs can operate for months or years
- Resources will be dependent on numerous factors (media coverage, impacts, declared or non-declared)
- People/organizations ability to commit time, expertise, and resources will ebb and flow



Source: SAMHSA - Adapted from Zunin & Myers as cited in DeWolfe, D. J., 2000

# Roles

---



- All disasters are local – coordinate with your local EM to identify YOUR community leaders (non-profits, churches, schools, civic groups)
- The more a community organizes pre-event the less likely outside factors will overly influence the recovery
- Local EMs can establish roles and responsibilities for local organizations to take on specific recovery roles (*depending on the size of your community this may be the traditional partners but if you are small/rural it may be some non-traditional partners*)
- Work closely with your local EM to access trainings, webinars, and discuss local planning efforts pre-event



---

# Thank you!

## Questions and Comments

**Ricky Adams**

Director, Field Operations

[Ricky.Adams@ema.alabama.gov](mailto:Ricky.Adams@ema.alabama.gov)

**Lisa Castaldo**

Long-Term Recovery Section Chief/State Individual Assistance Officer

[Lisa.Castaldo@ema.alabama.gov](mailto:Lisa.Castaldo@ema.alabama.gov)

@AlabamaEMA – [ema.alabama.gov](http://ema.alabama.gov)