

Economic Development:

It begins & ends at the LOCAL level

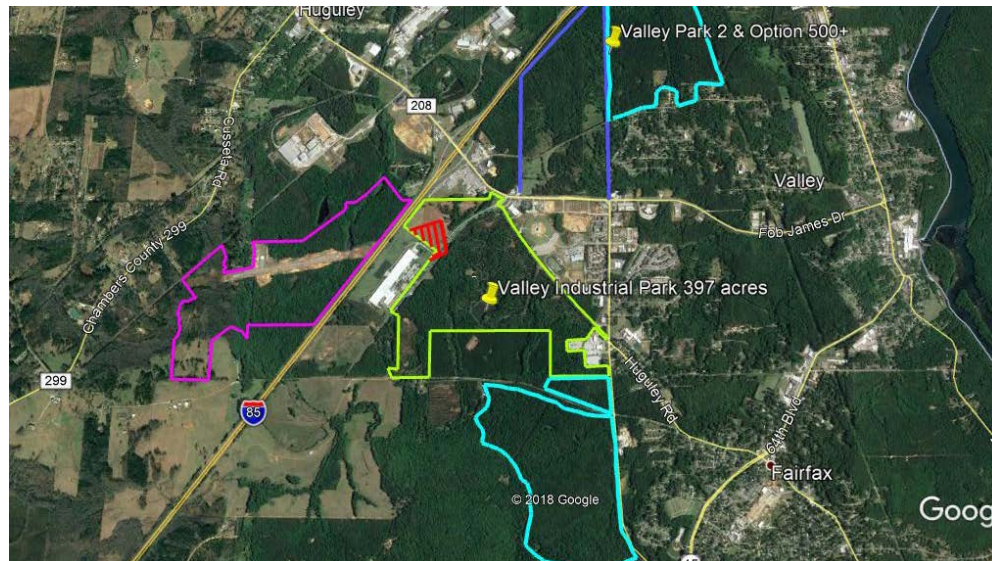




City of Valley

STRENGTH WOVEN IN

Any project
we are
working



Welcome to Valley, Alabama!

Who Are We? We are YOUR TEAM



Who We Are

- ▶ Valley, AL
- ▶ In late 2017, [John Soules Foods](#) announced [it would open](#) a 266,000 square foot facility in Valley, AL. During an initial phase of expansion, the company committed to hiring 210 employees and investing \$70 million. The company also committed to hiring an additional 300 employees, while investing another \$40 million over time. John Soules is the nation's leading formulator, manufacturer and marketer of ready-to-cook and fully-cooked beef and chicken products, so its commitment to Chambers County will bring economic opportunities for years to come.



World Class Companies



"The #1 Place to live in Alabama"

USA TODAY January 4, 2019

1. Valley, Alabama

- Population: 9,439
- 5 yr. population change: -0.8 percent
- Median home value: \$82,900
- Median household income: \$39,387

The majority of the cities on this list are relatively wealthy. Valley, Alabama, is an exception. The typical household in Valley earns just \$39,387 a year, about \$5,000 less than the typical Alabama household. Still, serious financial hardship is less common in Valley than in Alabama as a whole as 15.7 percent of area residents live below the poverty line, well below the 18.4 percent state poverty rate. Valley residents also benefit from a low cost of living as goods and services are about 6 percent less expensive in the city than they are nationwide on average.

Valley is a pilot city for the Alabama Communities of Excellence program, a non-profit that partners with governments, businesses, and universities to prepare participating communities for a more vibrant future.

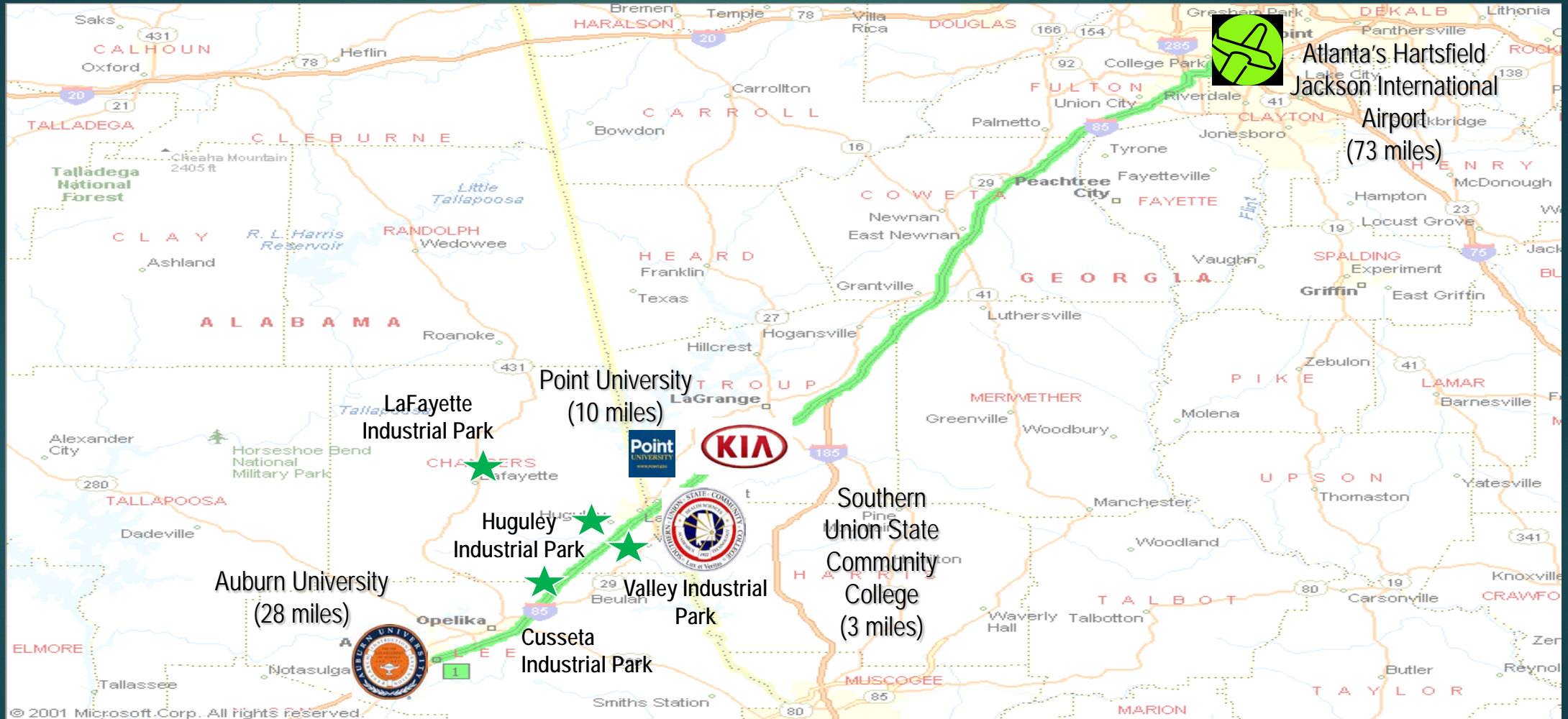


Issues/challenges living, working and recruiting in a rural area.

- retaining and expanding existing industries
- -Need to educate elected officials regarding ED: The 1 Leader issue, they want you to do it all
- -Workforce and educational development challenges: Labor pool
- -infrastructure/funding challenges: identify your resources

What Makes Us Unique?

LOCATION, LOCATION, LOCATION



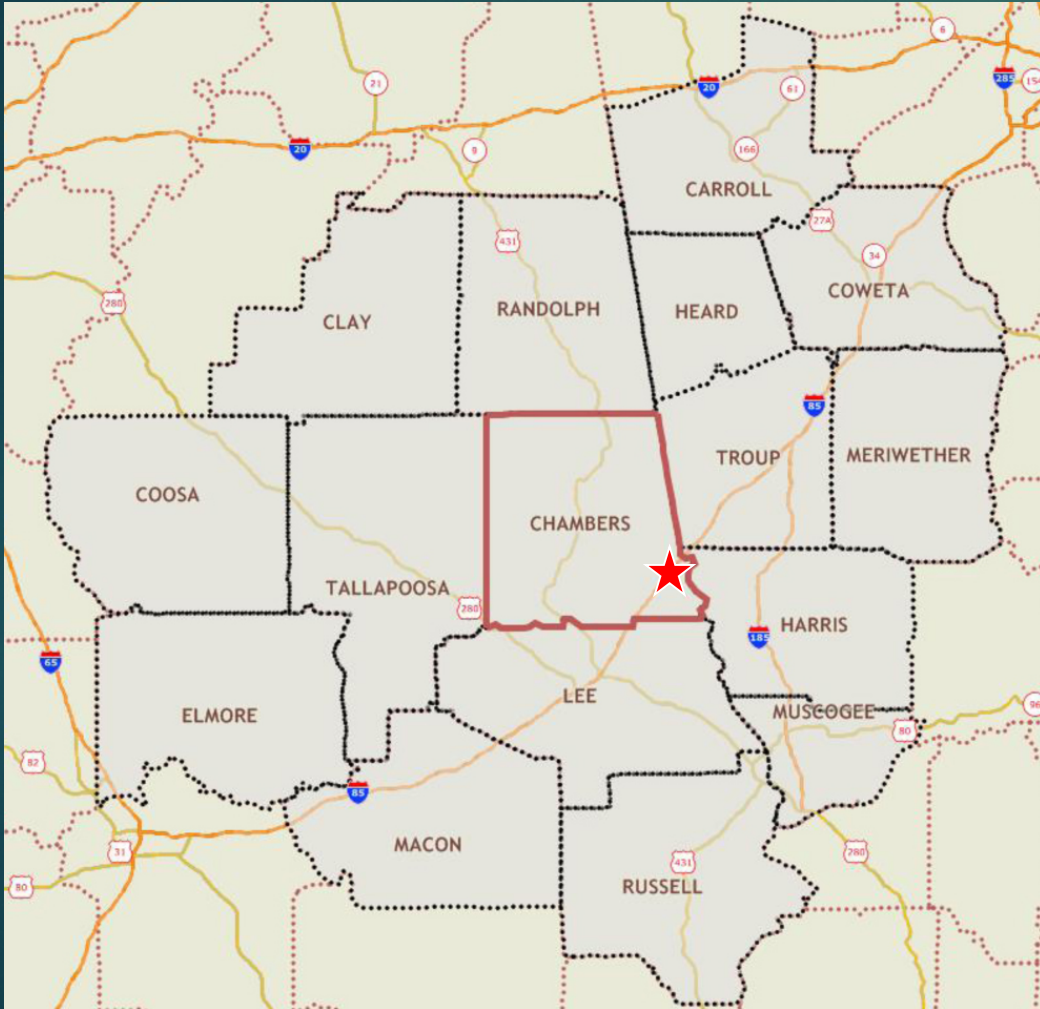
What Makes Us Unique?

Family Support Assistance

- ▶ Locating housing
- ▶ Utilities hookups and locations
- ▶ Ways to get involved
- ▶ Location of English tutors/classes (if needed)
- ▶ School enrollment process
- ▶ License and Passport renewal assistance
- ▶ Community tours of the area
- ▶ Other questions as they arise



45 Mile Drive Time from Plant



Counties
within
45 miles

45 mile drive time

Civilian Labor Force: 331,166

Unemployed: 41,875

Fifteen counties are within 45 miles
of Chambers County, eight in
Alabama and seven in Georgia.

Island

- F
- F
- ⊙ Is
- ⋄ S
- ⋄ S
- V
- ⋄ V

Valley Industrial Parks – Exit 77

Huguley

Valley Park 2 & Option 500+

208

Valley

299

Valley Industrial Park 397 acres

Huguley Rd

85

Huguley Rd

Fairfax Bypass

Fairfax

River Rd

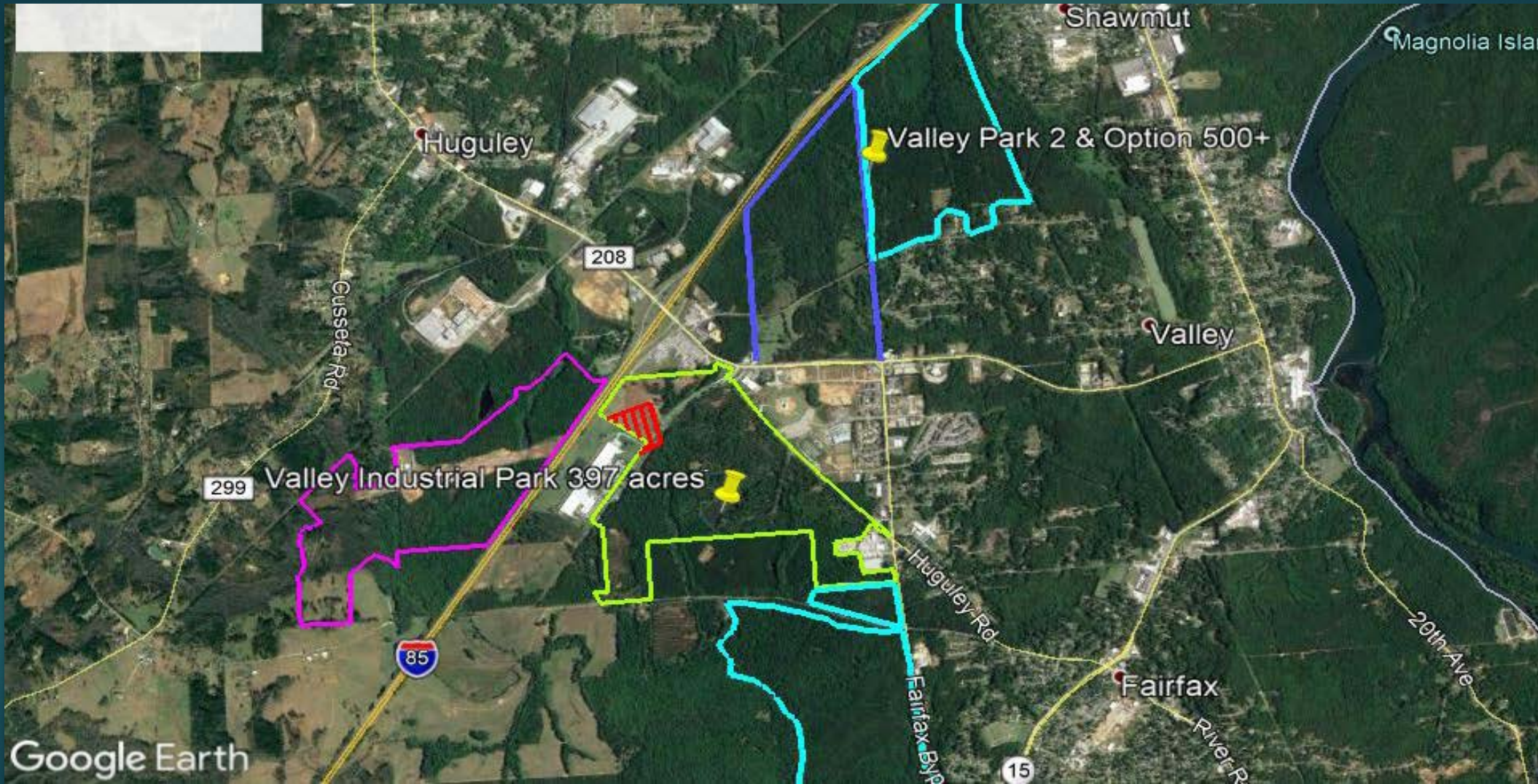
20th Ave

15

Google Earth

©2018 Google
Image Landsat / Copernicus

2 mi



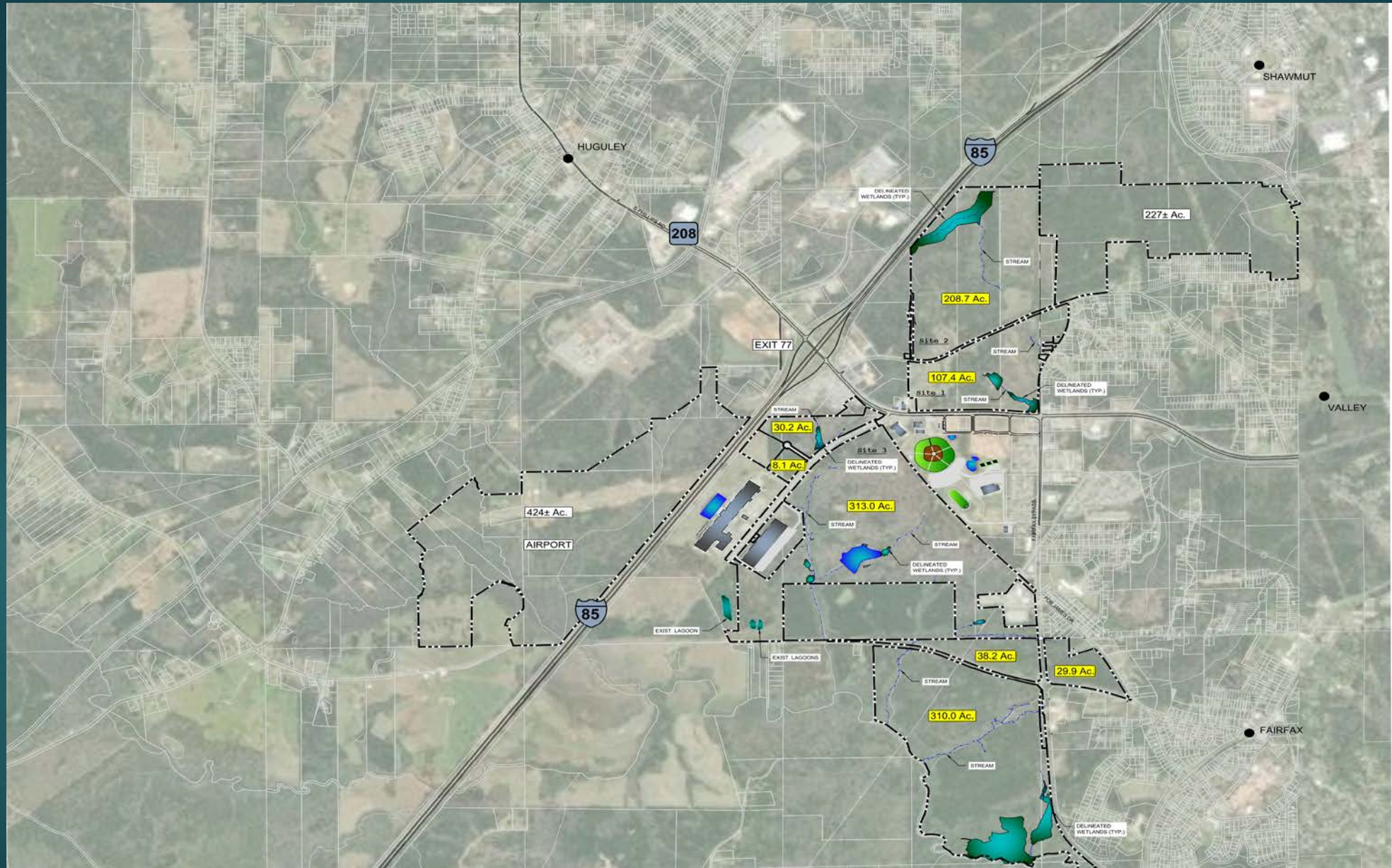
Valley Industrial Parks – Exit 77

Valley Industrial Park

Park

- Park is zoned for industrial use
- Direct access to/from Interstate 85 – Exit 77
- Bridge at I-85 is state inspected and state maintained; rated for all normal, legal loads
- Certified Alabama Advantage Site
- Sites are located in Opportunity Zones





Valley Industrial Park 2



Utilities:

- 12 inch water line
- 8 inch sewer line
- 4 inch gas line
- Telecommunications; Charter and WOW for redundancy if needed
- Electricity: AI Power has a 115 KV line in park

Site 2
Exit 77



Site 2
Exit 77





**Alabama Department
of Commerce**

INCENTIVES



We hope to see you in Chambers County and Valley soon!

Valerie Gray, Executive Director

334-642-1413

vgray@chambersida.com

Kimberly Carter, Director of Recruitment

334-642-1460

kcarter@chambersida.com

Chris Busby, Director of Community Development

334-642-1415

cbusby@chambersida.com