

# ADDRESSING ALABAMA'S INMATE CRISIS:

Its Statistical Impact on All 67 Counties

 **, EXECUTIVE DIRECTOR**  
**ASSOCIATION OF COUNTY COMMISSIONS OF ALABAMA**



| [www.alabamacounties.org](http://www.alabamacounties.org)



**A TASK FORCE WAS CREATED IN 2014  
IN RESPONSE TO FEDERAL PRESSURE.**

**COUNTIES HAD 2 REPRESENTATIVES ON  
THE TASK FORCE:**

- Former Marshall County Commissioner Bill Stricklend
- Baldwin County Sheriff Hoss Mack

**COUNTIES EXPRESSED  
CONCERNS ABOUT THE UNINTENDED  
IMPACT ON COUNTY JAILS.**

# COUNTIES EXPRESSED SPECIFIC CONCERNS WITH...

"dips" & "dunks" adding  
pressure on jail beds,  
medical costs & lawsuits.

# COUNTIES EXPRESSED SPECIFIC CONCERNS WITH...

Class D Felonies using county  
jails rather than State prisons.

**COUNTIES ENCOURAGED . . .**  
more study – but  
legislation passed in  
2015, *despite objections.*

**SINCE 2015...**

requirements to seek  
State-operated regional  
facilities for “dunks”  
have been ignored.

**SINCE 2015...**  
movement of  
State inmates from  
county jails has slowed.



# SINCE 2015...

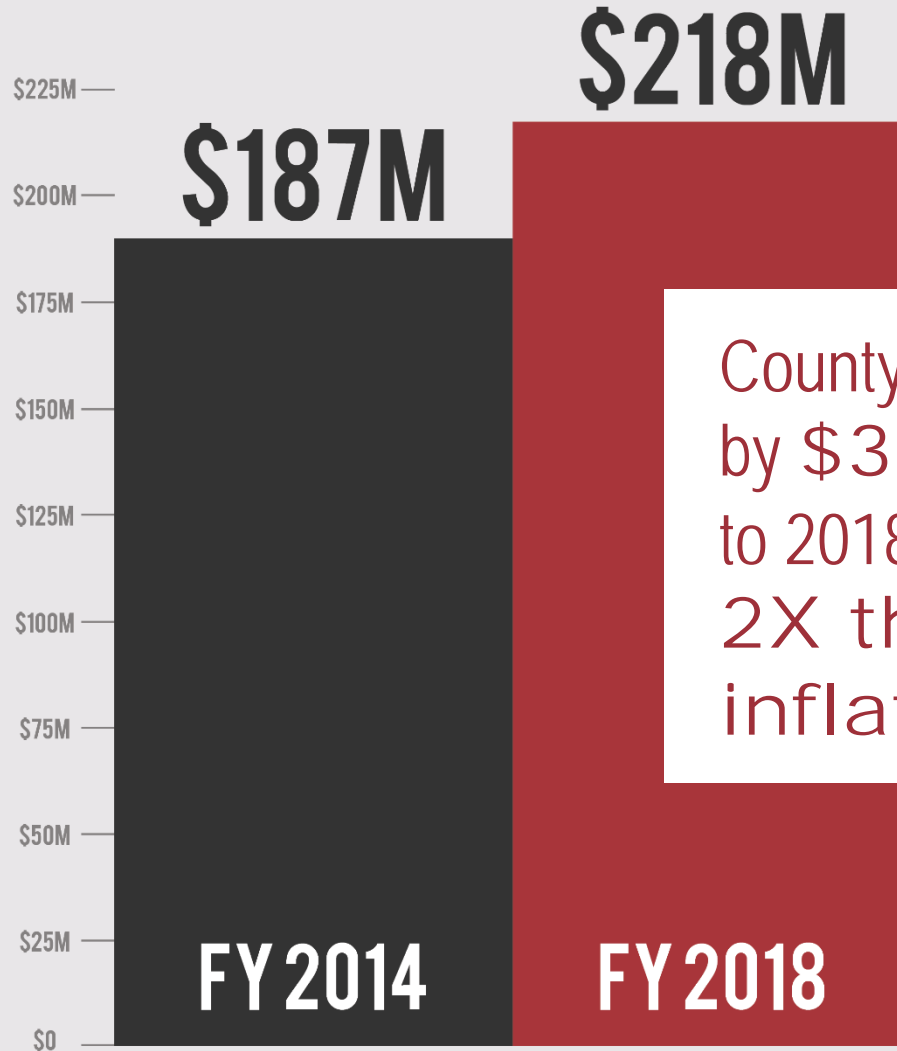
number of State inmates in county  
jails past 30-day limit has climbed  
& only continues to do so.

# ALABAMA'S UNRESOLVED INMATE CRISIS

A Report on the Unintended Impact  
of the 2015 Prison Reform Act

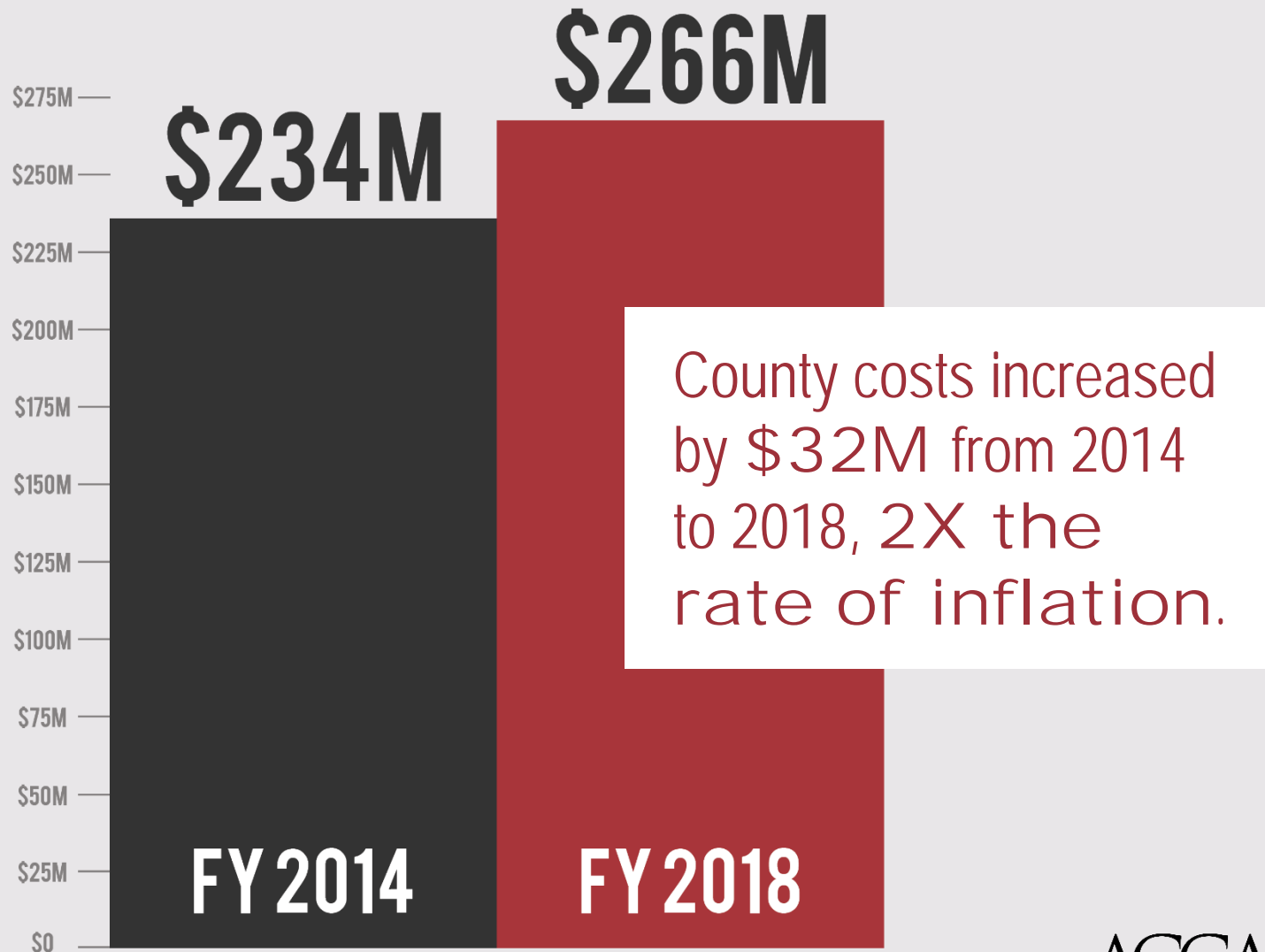


# COST TO OPERATE COUNTY JAILS

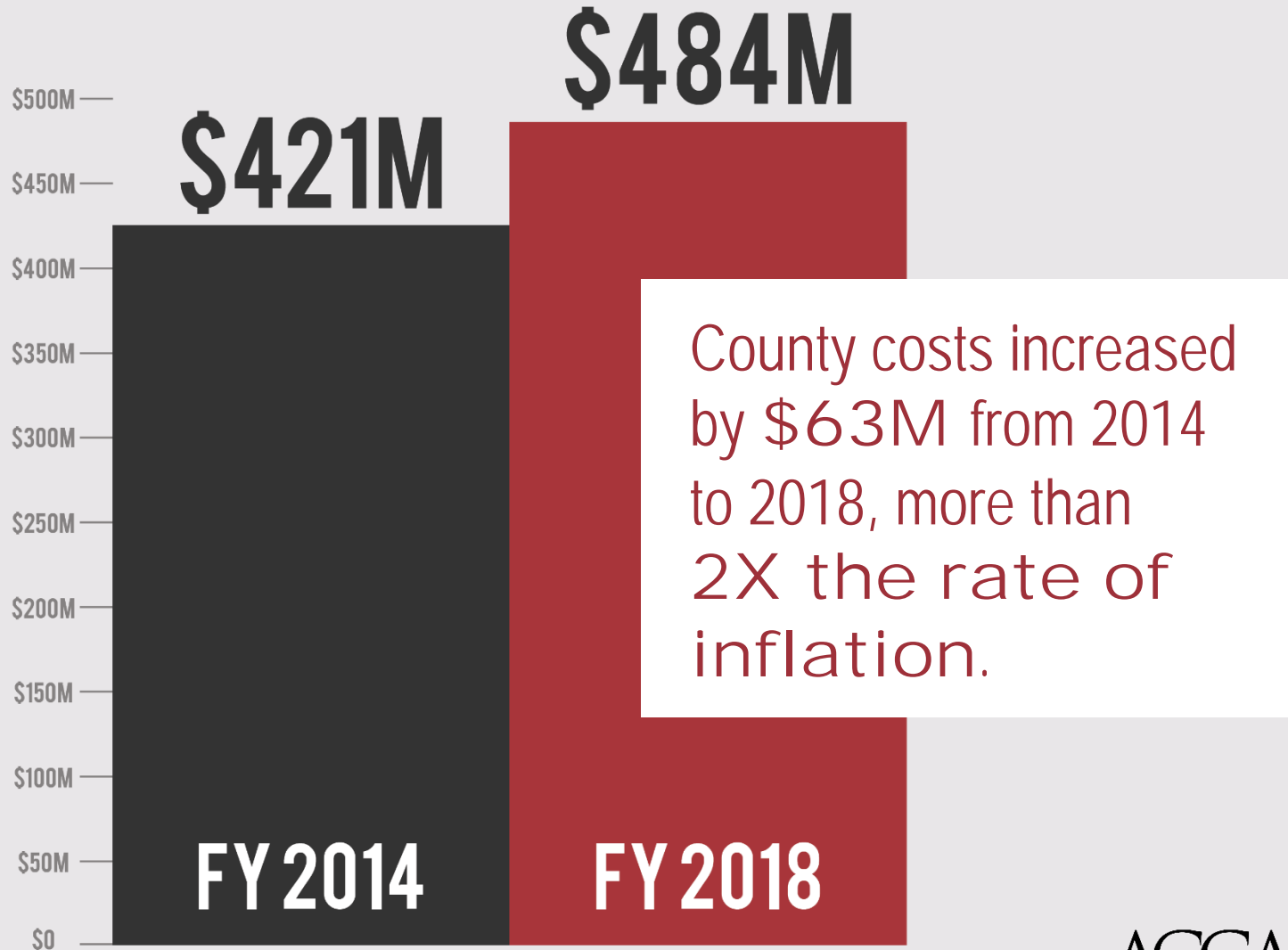


County costs increased by \$31M from 2014 to 2018, more than 2X the rate of inflation.

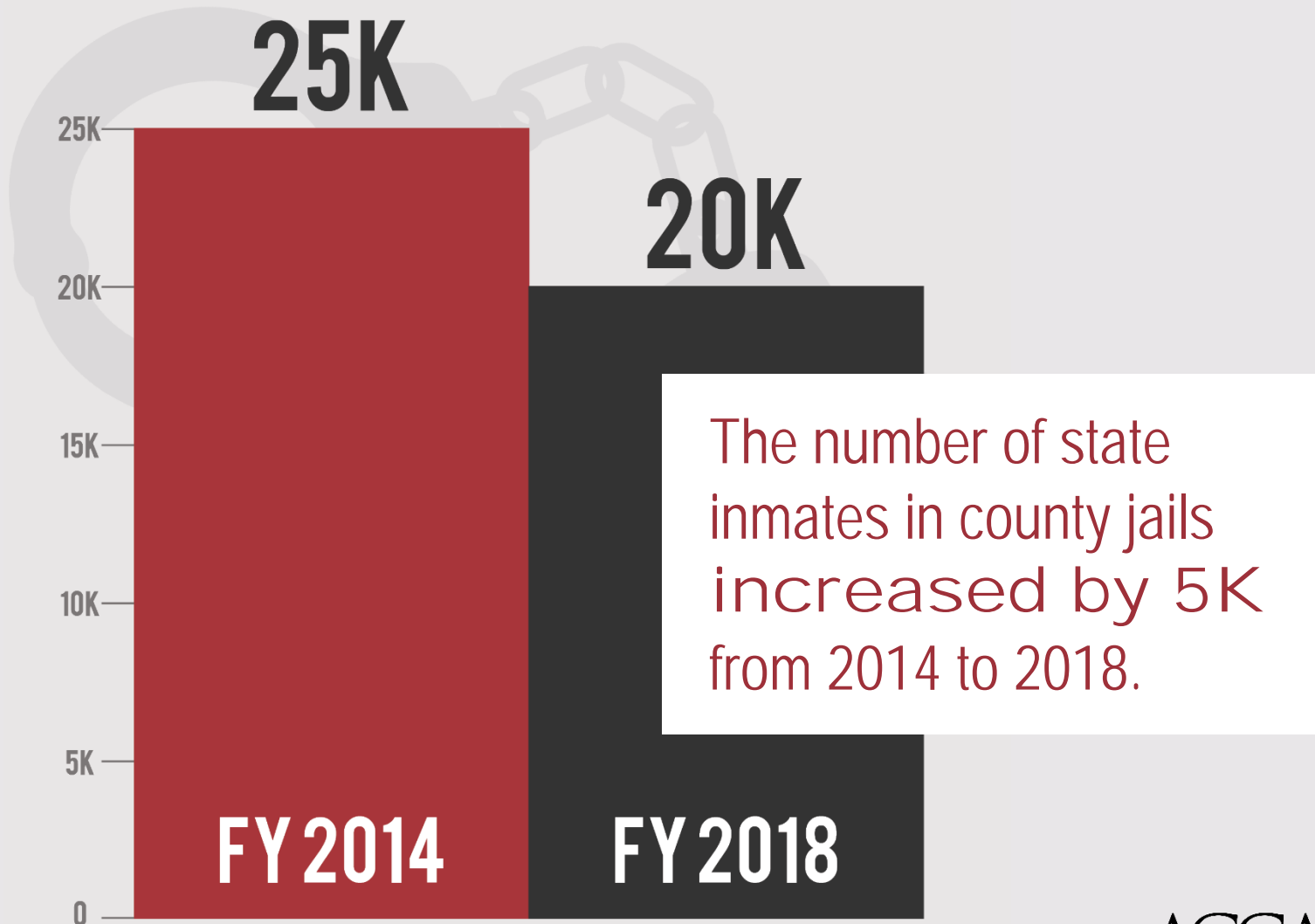
# COST TO OPERATE COUNTY SHERIFF'S DEPARTMENTS



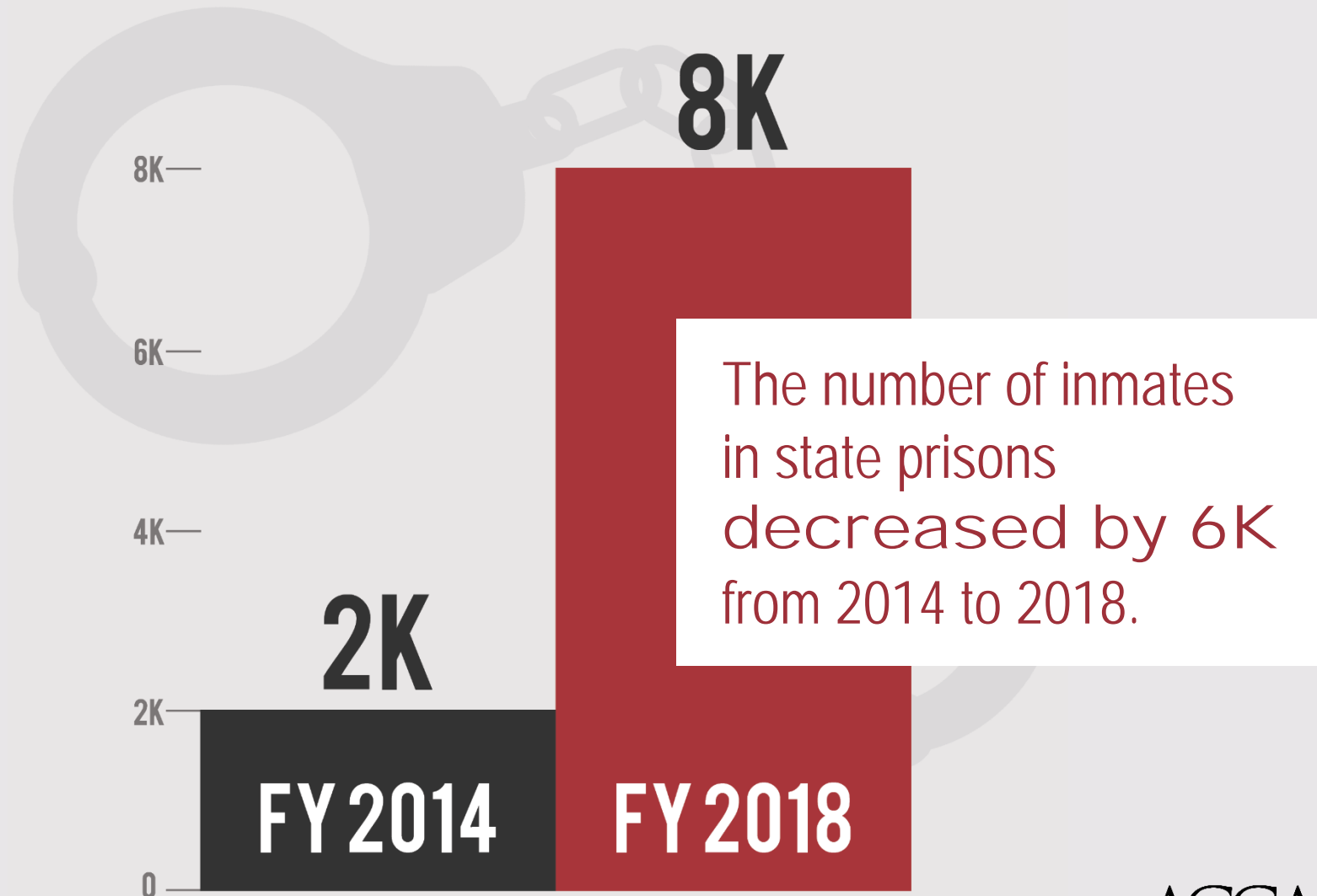
# COMBINED COST TO COUNTIES FOR STATE INMATE INFUX



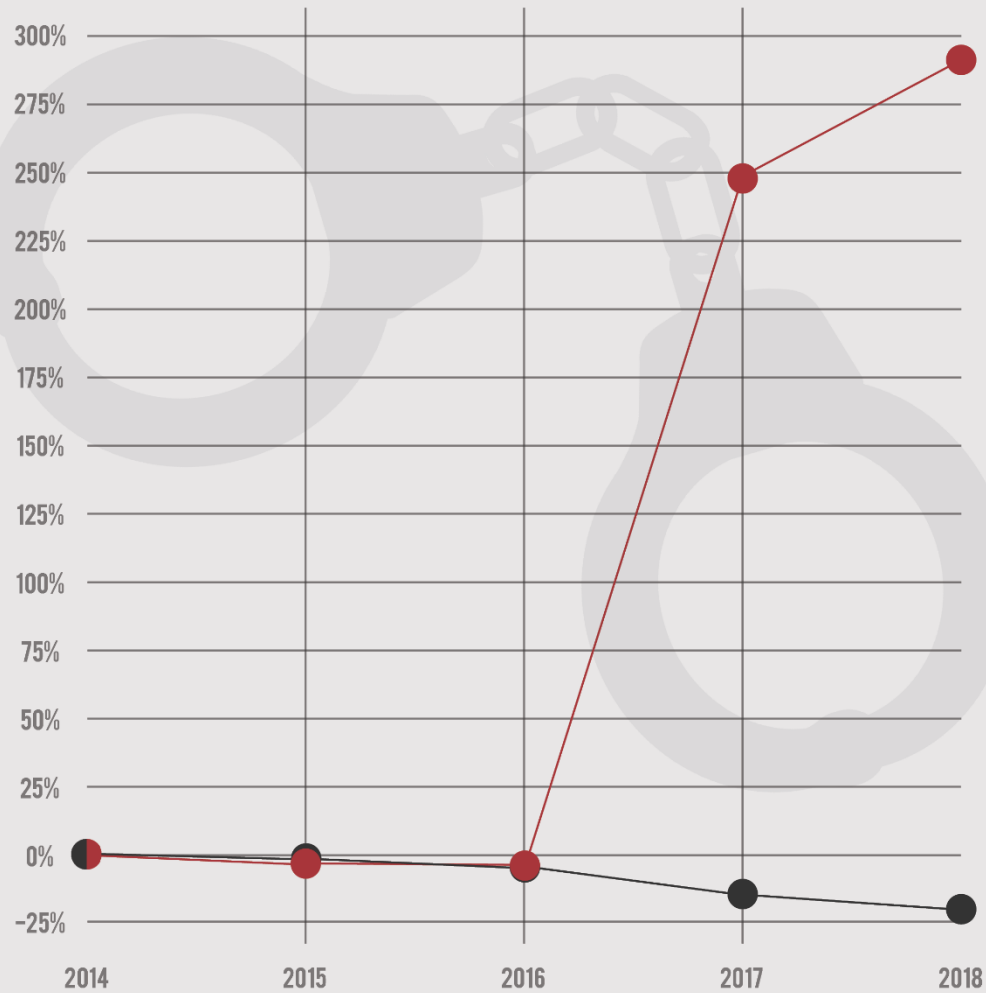
# STATE INMATE POPULATION IN STATE PRISONS



# STATE INMATE POPULATION IN COUNTY JAILS



# STATE INMATE POPULATION PERCENTAGE CHANGE



STATE INMATES IN STATE PRISONS

STATE INMATES IN COUNTY JAILS



| [www.alabamacounties.org](http://www.alabamacounties.org)





**A NEW TASK FORCE IS  
CURRENTLY LOOKING AT  
MORE REFORMS.**

**REFORM BILLS WILL BE  
INTRODUCED IN THE  
2020 SESSION.**



Those who cannot  
remember the **past** are  
condemned to repeat it.

*George Santayana*



# CONTACT INFORMATION



*Sonny Brasfield*

**ACCA EXECUTIVE DIRECTOR**



(334) 263-7594



sbrasfield@alabamacounties.org



@sonnybrasfield



| [www.alabamacounties.org](http://www.alabamacounties.org)

