

**BID SUBMITTAL FORM**  
**Alabama County Joint Bidding Program**  
**BID ITEM – 125 HP HYDROSTATIC BULLDOZER – OPTION A**

Company Name: WARRIOR TRACTOR & EQUIPMENT COMPANY, INC.

Address: 6801 MCFARLAND BLVD W  
NORTHPORT, AL 35476

Bid Submitted by: DAVID PATTERSON  
(Name of company representative)

Title: SALES MANAGER E-mail address: DAVID P@WARRIORTRACTOR.COM

Phone: 205-339-0300 Fax: 205-333-0101

By submitting this bid, we agree:

The equipment model number identified below meets the bid specs for this bid item

That the bid price will be honored for all counties for the period from Jan. 1, 2021 to Dec. 31, 2021.

The equipment will be delivered at the bid price to all counties participating in the joint bid program

The company representative listed above will be the contact person for purchasing this bid item under the joint bid program

The bid is accompanied by a current catalog or model specification document for the model number identified below

The bid is accompanied by a copy of the manufacturer's standard warranty as required in the bid specifications

The bid includes the e-verify documentation required by Alabama law

If awarded the bid, a performance bond will be provided upon request

The bid documents include the **Manufacturer's Suggested Retail Price Sheet (MSRP) for the Standard Machine**

Initials



## 125 HP HYDROSTATIC BULLDOZER – OPTION A

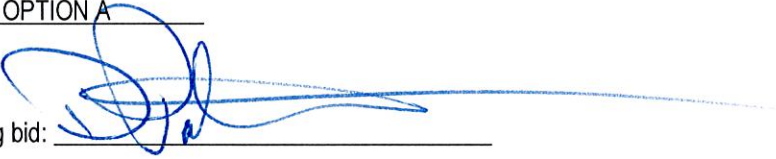
Total Bid Price for Standard Machine: \$ 139,697.00  
(Total Bid Price for Standard Machine Includes Freight Preparation, Delivery and Standard Warranty Costs)\*

Freight Preparation and Delivery: \$ 7,000.00  
(Included in Standard Machine Bid Price)

Manufacturer's Suggested Retail Price for Standard Machine: \$ 195,177.00

Equipment Model #: JOHN DEERE 700L

Description: 125HP HYDROSTATIC DOZER OPTION A

Signature of company representative submitting bid: \_\_\_\_\_

Title: SALES MANAGER

\* **NOTE:** Award will be made based on the total cost of the **Standard Machine**. The total cost of the standard machine is to include the freight preparation, delivery and standard warranty cost. Freight preparation, delivery will be excluded from the total bid price of the standard machine in determining the percentage discount for any available options.

## BID SUBMITTAL FORM: OPTION COST SHEET 125 HP HYDROSTATIC BULLDOZER – OPTION A

By submitting this bid, we agree:

To offer any available options at the percent difference between the Manufacturer's Suggested Retail Price Sheet and the actual bid price on the Standard Machine\*

The bid documents include the Manufacturer's Suggested Retail Price Sheet (MSRP) with **any available Options** for the Standard Machine



Equipment Model #: JOHN DEERE 700L

Description: 125HP HYDROSTATIC DOZER OPTION A

Signature of company representative submitting bid: 

Title: SALES MANAGER

**\*Note:** The percent difference between the **Manufacturer's Suggested Retail Price Sheet (MSRP)** for the standard machine as specified by these **Bid Specifications** and the actual price bid by the vendor will be calculated to determine the percentage discount to be applied to any available options. The bid price of the freight preparation, delivery cost shall be excluded in determining the percentage discount to be applied to available options. Any individual county may choose to add any available option to the standard machine at the percentage discount at the time of purchase.

# **BID SPECIFICATIONS FOR 125 HP HYDROSTATIC BULLDOZER – OPTION A**

## **GENERAL**

These specifications shall be construed as the minimum acceptable standards for a 125 hp hydrostatic low ground pressure bulldozer. Should the manufacturer's current published data or specifications exceed these standards, the manufacturer's standards shall be considered minimum and shall be furnished. All integral parts not specifically mentioned in the scope of these specifications that are necessary to provide a complete working unit shall be furnished. Additionally, the machine offered for bid shall include all standard manufacturer's equipment. The bulldozers must be a new current production model and shall meet all EPA and other applicable standards at the time of manufacture.

The use of specific names and numbers in the specifications is not intended to restrict the bidder or any seller or manufacturer, but is intended solely for the purpose of indicating the type, size and quality of equipment considered best adapted to the uses of counties participating in this joint bid.

## **BID SUBMITTAL FORM**

Each bidder must submit his or her bid on the Bid Submittal Form included in the invitation to bid package. All written warranties to be submitted shall be attached to the Bid Submittal Form.

## **BID PRICE**

The price bid shall include all destination charges, delivery charges, title fees, rebates, and all other applicable costs and refunds.

## **MANUALS**

Each unit shall be provided with one (1) copy of the operator's manual and one (1) copy of the current parts manual. Units will not be accepted for delivery until the manuals as outlined above are received by the purchaser.

## **REPLACEMENT PARTS AVAILABILITY**

Parts must be available for 5 years or 7,500 hours of use for the piece of equipment bid. If replacement parts are not delivered within three (3) working days of an order being placed, the bidder will deliver an equivalent machine for the county to use at no cost to the county until such time as the parts are delivered to the county so it can affect repairs to its machine.

## **WARRANTY**

Bidders shall submit a copy of the manufacturer's standard warranty. Warranty shall include service response time of maximum of 36 hours within notification by county.

Yes X No       
Page#         

or

Attachment ATTACH



**ENGINE**

Shall be a turbocharged diesel engine with a displacement of not less than **260 cubic inches**, capable of developing a minimum of 125 net flywheel horsepower (SAE J1349).

Yes X No       
Page # 14

Engine shall be manufactured by the equipment manufacturer.

Yes X No       
Page # 14

**WEIGHT**

Operating weight with blade, operator, full fuel tank, and ROPS canopy shall not be less than **30,500 lbs.**

Yes X No       
Page # 15

**ELECTRICAL SYSTEM**

Shall be equipped with a minimum 85-amp alternator.

Yes X No       
Page # 14 & 15

**TRANSMISSION**

Shall be equipped with a hydrostatic type transmission.

Yes X No       
Page # 14

**STEERING**

All steering functions must be able to be performed using one hand only.

Yes X No       
Page # 14

**UNDERCARRIAGE**

The tractor shall be equipped with sealed and lubricated tracks. Minimum shoe width shall be **28 inches**. Track sag shall be hydraulically adjusted.

Yes X No       
Page # 15

**BLADE**

The machine shall be equipped with a six-way (pat) blade with a minimum capacity of **4 cubic yards**.

Yes X No       
Page # 16

**VANDALISM PROTECTION**

Machine shall be equipped with all standard and optional factory vandalism protection available for the machine bid.

Yes X No       
Page # 22 & 23

### **SAFETY EQUIPMENT**

Gauges and indicators shall be provided to monitor critical (fuel level, coolant temperature, powertrain oil temperature, and hydraulic oil temperature) operational systems of the machine and alert the operator when potential problems occur.

Yes X No       
Page # 22 & 23

Rear view mirror; backup alarm.

Yes X No       
Page # 22 & 23

Heavy duty hinged radiator guard

Yes X No       
Page # 22 & 23

Crankcase guard

Yes X No       
Page # 22 & 23

Track center guiding guard

Yes X No       
Page # 22 & 23

Pre-cleaner guard

Yes X No       
Page # 22 & 23

Front tow hooks

Yes X No       
Page # 22 & 23

Heavy duty rear drawbar

Yes X No       
Page # 22 & 23

Fire extinguisher

Yes X No       
Page # 22 & 23

Water separator

Yes X No       
Page # 22 & 23

# 700L CRAWLER DOZER

31-Aug-2020



Code	Description		
23D0T	700L CRAWLER DOZER	1	\$190,324.00
	Ex-Works Dubuque, Iowa, United States of America		
	As not all option codes have field kits, please review your order option codes and available kits prior to placing a machine order.		
Option Codes			
0940	John Deere 6 Cyl EPA FT4 Engine	1	\$3,453.00
	John Deere PowerTech Plus 6 Cyl EPA FT4/EU Stage V Compliant 6.8 L (414 cu. in.) 135 net hp (101 kW) @ 1800 rpm - No power derating up to 10,000 ft altitude		
3510	Standard Hydraulic Fan Drive	1	No Added Cost
1075	LGP PAT (Low Ground Pressure Power - Angle - Tilt) D	1	\$1,332.00
	1981 mm (78 in.) Gauge - 7 Roller Track Frame		
4590	30 Inch (762 mm) Moderate Service Shoes - Heavy Du	1	-\$6,547.00
	Sealed and Lubricated Track (SALT)		
7095	PAT Blade - 133 Inch (3383 mm)	1	\$5,475.00
	Requires code 1075 (LGP PAT) 3.6 cu. m (4.8 cu. yd.) capacity		
7750	3 Function Electro-Hydraulics (EH) for Power-Angle-T	1	No Added Cost
	Does not include auxiliary hydraulics		
7925	Standard Hydraulic Pump	1	No Added Cost
8010	Hydraulic And Hydrostatic Oil - Hydraul	1	No Added Cost
	Standard Factory Fill. Provides All-Season capability in ambient temperatures ranging from -25C (-13F) to 50C (122F).		
5025	Canopy with Under-Seat Heater	1	No Added Cost



5855	Air Suspension Comfort Control High Back Vinyl Seat	1	No Added Cost
	Vinyl-covered high-back seat includes pan tilt, pan extend, lumbar adjustment and air suspension with full damping capability. 3 in. (76 mm) retractable seat belt.Requires Code 5025.		
170C	JDLINK Ultimate 5 Year Subscription	1	No Added Cost
	Includes JDLINK hardware: integrated cab wiring harness, antenna, modular telematics gateway (MTG), and now includes all Ultimate Connectivity features – Wireless Data Transfer (WDT) enabling automatic data transfer from TimberMatic and Waratah H16 Measuring Systems to TimberManager and MyJohnDeere, supporting TimberOffice 5 Software. Additionally, Ultimate now includes Limited Internet features supporting optional ForestSight Solutions such as advance mapping systems and Remote Display Access (RDA) features supported by TeamViewer applications. JDLINK utilizes cellular and satellite technology infrastructure that is outside the control of John Deere. Changes to that infrastructure may require customers to purchase compatible JDLINK hardware to restore functionality. Includes 5 year subscription. Annual subscription renewal required after 5 years for continued functionality. JDLINK customer account must be created to access JDLINK Ultimate data. Go to <a href="http://www.StellarSupport.com">www.StellarSupport.com</a> to renew or update JDLINK subscriptions. Use of this service, and all rights and obligations of John Deere and the Customer (as identified in the applicable agreement), are governed by the terms and conditions outlined in the applicable Services and Software agreements available at <a href="http://www.JohnDeere.com/Agreements">www.JohnDeere.com/Agreements</a> . If these terms and conditions are not agreeable do not proceed and do not use the service.		
2575	No Grade Control Installed	1	No Added Cost
2605	English Operator Manual	1	No Added Cost
9325	Heavy Duty Grille	1	\$525.00
	Reinforced plate grille for increased protection of cooling fan.		
9343	Retrieval Hitch w/o Rear Counterweight	1	\$615.00
	31 kg (68 lb.) Not for use with other rear attachment		
<b>Total</b>			<b>\$195,177.00</b>

Manufacturer's Suggested List Price shown. Retail prices may vary by dealer. Unless stated otherwise, taxes, freight, setup, delivery and other dealer specific charges not included in the pricing. Options/items noted with anything other than price will have additional costs. Pricing, availability, and specifications subject to change without notice. Special program pricing may be available on certain models. See dealer for details. Prices shown are in U.S. dollars and valid only in the U.S.





**JOHN DEERE**

Current Date 11Aug2020

## 700L CRAWLER DOZER

### 700L Standard Equipment ENGINE

John Deere PowerTech Plus  
6.8L Certified to EPA FT4 /  
EU Stage V  
emissions  
135 SAE Net hp (101 kw)  
Turbocharged with Charged  
Air Cooler  
No Power Derating up to  
10,000 ft Altitude  
Wet Sleeve Cylinder Liners  
Isolation-Mounted  
Electronic Fuel Injection  
Electronic Control with  
Automatic Engine Protection  
Vertical Spin-on Engine Oil  
Filter  
Vertical Spin-on Dual Stage  
Fuel Filter  
Oil-to-Water Engine Oil  
Cooler  
Dual Safety Element Dry-  
Type Air Cleaner, Evacuator  
Valve  
Eco Mode  
500 hr. Engine Oil Change  
Interval  
COOLING SYSTEM  
Cool-On-Demand Variable  
Speed Engine Fan  
Engine Coolant -34 Degree F  
(-37 Degree C)  
Coolant Recovery Tank  
10-Fin/in. Engine Coolant  
Radiator  
10-Fin/in.  
Hydrostatic/Hydraulic Oil-to-  
Air Cooler  
10-Fin/in. Air-to-Air Charge  
Air Cooler  
ELECTRICAL  
24 Volt System  
110 Amp Alternator for  
canopy units / 145 Amp  
Alternator for cab units

Selectable reverse speed  
ratios 100%, 115%, 130%  
or independent of  
forward ground speed  
Electronic Control with  
Automatic Transmission  
Protection  
26.9 Gallon (101.8 Liter)  
Reservoir with Sight Gauge  
Triple Reduction Final Drives  
with Wet Multi-Disk Brakes  
Primary and Secondary  
Service Brakes (Conforms to  
ISO10265)  
Automatic Spring-Applied,  
Hydraulic Released Park  
Brake (Conforms to  
ISO 10265)  
4000 hr. Oil Change Interval  
Transmission Diagnostic  
Ports  
Selectable Decelerator Mode  
UNDERCARRIAGE  
Oscillating Undercarriage  
Maximum Life Undercarriage  
with Moderate Single  
Grouser Track Shoes  
Adjustable Track Sag  
Segmented Sprockets  
Front and Rear Chain Guides  
OPERATOR STATION:  
JDLink Ultimate Machine  
Monitoring System w/ 5-year  
Message Service  
Modular Design ROPS/FOPS  
Operator Station (Conforms  
to SAE J1040 - ISO  
3471)  
Viscous Isolated  
Left and Right Front Access  
Front, door and rear wipers  
and washers (cab)  
Floormat  
Large Color Display Located  
in Front Console

Transmission Filter  
Restriction  
Hydraulic Filter Restriction  
Water in Fuel  
Transmission Pressure Low  
Coolant Level Low  
Diesel Exhaust Fluid (DEF)  
Contaminated Indicator  
Engine Emissions Systems  
Malfunction Indicator  
Indicators  
Park Brake  
Fasten-Seat-Belt  
Operator Presence (Seat  
Switch)  
Exhaust Filter Cleaning  
Indicator  
Exhaust Filter Auto Cleaning  
Disabled Indicator  
Neutral Rotate Mode  
Rear Aux Mode Ripper,  
Winch, Generic Rear Aux  
Transmission Warmup Mode  
Blade Float  
Auto Blade Control Indicator  
Displayed on Main Screen  
Tachometer  
Hourmeter  
Transmission Direction  
(F,N,R, RTN to N, P) and  
Speed (SIG 1.0-3.0)  
Transmission Display  
(Forward Setting)  
Transmission Display  
(Reverse Setting)  
Exhaust Filter Status  
Ambient Temperature  
(Engine Air Inlet Temp)  
Clock  
Displayed on Secondary  
Screen  
Machine Diagnostic Service  
Code(s)  
Fuel Efficiency Runtime  
Screen

(2) Batteries with 190 Minute Reserve Capacity, 950 CCA  
 Master Electric Disconnect Switch  
 Bypass Start Safety Cover on Starter  
 Positive Terminal Battery Covers  
 Blade-Type Fuses  
 Electrical Master Disconnect  
 Pre-wired for Work Lights and Underseat Heater (canopy)  
 (2) Cab Mounted and (2) Rear Mounted Halogen Lights w/ (2) reflectors  
**HYDRAULICS**  
 28 gpm (106 L/Min) Fixed Displacement Hydraulic Gear Pump  
 Three-Function Electro-Hydraulic (EH) Controls with Proportional Angle Function  
**POWER TRAIN**  
 Dual Path Hydrostatic Transmission  
 Variable Displacement Piston Pump and Motor Combination  
 Automatic Load Sensing for Speed and Power Management  
 AutoTracking Steering Control  
 8 Micron Vertical Spin-on Filter  
 Single Lever-Steering, Direction / Speed Control with Counter Rotation and Horn  
 Combined Decelerator/Brake Pedal

Interior Sound Treatment  
 Slip-Resistant Steps and Ergonomically Located Handholds for Left, Right Access (Conforms to SAE J185 - ISO 2867)  
 Air-suspension Seat  
 Operator Presence System  
 Thigh Support  
 Lumbar  
 Backrest Tilt  
 Height, Weight and Fore-Aft  
 Side Console Leg Cushions  
 Adjustable Armrests  
 3 in. (76 mm) Orange Seat Belt with Retractors (Conforms to SAE J386 - ISO 6683)  
 Lunch Box Storage  
 Glove (Storage) Box  
 Cupholders (x2)  
 Built-in Operator's Manual  
 Storage Compartment and Manual  
 12 Volt Power Port  
 Gauges  
 Engine Coolant Temperature  
 Transmission Oil Temperature  
 Hydraulic Oil Temperature  
 Engine Oil Pressure  
 Fuel Level  
 DEF Level  
 Warnings  
 Stop  
 Caution  
 Low Alternator Voltage  
 Engine Air Filter Restriction

Horn, Electric (Conforms to SAE J994, J1446, ISO 9533)  
 Coded Keyless Start with Electric Fuel Shut Off  
 Interior Mounted Rearview Mirror (Conforms to SAE J985)  
**OVERALL VEHICLE**  
 Unitized Mainframe with:  
 Integrated Front Tow Loop  
 Reinforced Engine and Mid-frame Bottom Guards  
 Integral Transmission Guard  
 Hinged Bottom Access Covers (Bolt-On)  
 Perforated Engine Side Shields  
 Heavy-Duty Perforated Front Grille with Hose Protection  
 Lockable Vandal Protection for:  
 Engine Access Panel  
 Rear Service Doors  
 Fuel tank  
 Instrument Panel  
 Hydrostatic/Hydraulic Reservoir - Need wrench to access  
 Environmental Drains  
 69.2 Gallon (262 Liter) Fuel Tank:  
 Wide Mouth Fuel Filler Cap  
 Shut Off Valve at Tank Outlet  
 Ground Level Fueling  
 Reverse Warning Alarm with Guarding (Conforms to SAE J994, J1446)

**Required** - You must select one from each category

▼ **BASE MACHINE**

Ex-Works Dubuque, Iowa, United States of America

As not all option codes have field kits, please review your order option codes and available kits prior to placing a machine order.

**Description**

**Code**

**Price**



## 700L CRAWLER DOZER

23D0T \$190,324.00

## ▼ ENGINE

Description	Code	Price
John Deere 6 Cyl EPA FT4 Engine	0940	\$3,453.00
John Deere PowerTech Plus 6 Cyl EPA FT4/EU Stage V Compliant 6.8 L (414 cu. in.) 135 net hp (101 kW) @ 1800 rpm - No power derating up to 10,000 ft altitude		

## ▼ ENGINE FAN DRIVE

Description	Code	Price
Standard Hydraulic Fan Drive	3510	No Added Cost
Automatic Reversing Hydraulic Fan	3520	\$1,509.00

## ▼ DOZER CONFIGURATION

Description	Code	Price
XLT PAT (Extra Long Track Power - Angle - Tilt) Dozer	1055	No Added Cost
1778 mm (70 in.) Gauge - 7 Roller Track Frame		
LGP PAT (Low Ground Pressure Power - Angle - Tilt) Dozer	1075	\$1,332.00
1981 mm (78 in.) Gauge - 7 Roller Track Frame		

## ▼ TRACK SHOES AND CHAIN

Description	Code	Price
24 Inch (610 mm) Moderate Service Shoes - Extended Life Undercarriage	4671	(\$1,694.00)
Sealed and Lubricated Track (SALT) with SC2 Bushings		
22 Inch (559 mm) Moderate Service Shoes - Heavy Duty Undercarriage	4555	(\$7,274.00)
Sealed and Lubricated Track (SALT)		
24 Inch (610 mm) Moderate Service Shoes - Heavy Duty Undercarriage	4570	(\$7,211.00)
Sealed and Lubricated Track (SALT) Availability for this track option is limited and may exceed standard lead time.		
30 Inch (762 mm) Moderate Service Shoes - Heavy Duty Undercarriage	4590	(\$6,547.00)
Sealed and Lubricated Track (SALT)		
22 Inch (559 mm) Moderate Service Shoes - Extended Life Undercarriage	4655	(\$2,064.00)
Sealed and Lubricated Track (SALT) with SC2 Bushings		

30 Inch (762 mm) Moderate Service Shoes - Extended Life Undercarriage	4690	(\$760.00)
---	------	------------

Sealed and Lubricated Track (SALT) with SC2 Bushings

22 Inch (559 mm) Moderate Service Shoes - Max Life Undercarriage	4755	No Added Cost
--	------	---------------

Sealed and Lubricated Track (SALT) with SC2 Bushings and larger track links, rollers and idlers.

24 Inch (610 mm) Moderate Service Shoes - Max Life Undercarriage	4770	\$645.00
--	------	----------

Sealed and Lubricated Track (SALT) with SC2 Bushings and larger track links, rollers and idlers.  
Availability for this track option is limited and may exceed standard lead time.

30 Inch (762 mm) Moderate Service Shoes - Max Life Undercarriage	4790	\$1,340.00
--	------	------------

Sealed and Lubricated Track (SALT) with SC2 Bushings and larger track links, rollers and idlers.

#### DOZER BLADE

All Blades include Straight End Bits and Bolt-On Cutting Edges.  
Blades are not installed, but shipped with Crawler Dozer.

Description	Code	Price
PAT Blade - 121 Inch (3078 mm)	7074	\$4,370.00
Requires code 1055 (XLT PAT) 3.4 cu. m (4.4 cu. yd.) capacity		
PAT Blade - 127 Inch (3231 mm)	7078	\$4,589.00
Requires code 1055 (XLT PAT) 3.5 cu. m (4.6 cu. yd.) capacity		
PAT Blade - 133 Inch (3383 mm)	7095	\$5,475.00
Requires code 1075 (LGP PAT) 3.6 cu. m (4.8 cu. yd.) capacity		
PAT Blade - 145 Inch (3688 mm)	7098	\$5,968.00
Requires code 1075 (LGP PAT) 3.9 cu. m (5.1 cu. yd.) capacity		

#### HYDRAULICS FOR DOZER BLADE AND ATTACHMENTS

Description	Code	Price
3 Function Electro-Hydraulics (EH) for Power-Angle-Tilt (PAT)	7750	No Added Cost
Does not include auxiliary hydraulics		
4 Function Electro-Hydraulics (EH) for Power-Angle-Tilt (PAT)	7760	\$1,440.00



Includes auxiliary plumbing for rear implement

#### ▼ HYDRAULIC PUMP

Description	Code	Price
Standard Hydraulic Pump	7925	No Added Cost
Thru Drive Hydraulic Pump for use with Direct Drive (PTO) Winch	7985	\$530.00
For use with Deere 4000S Winch (mechanical drive) Includes external spline for driveshaft.		

#### ▼ GREASES, FUEL, OIL, & COOLANT

Description	Code	Price
Hydraulic And Hydrostatic Oil - Hydrau	8010	No Added Cost
Standard Factory Fill. Provides All-Season capability in ambient temperatures ranging from -25C (-13F) to 50C (122F).		
Hydraulic and Hydrostatic Oil - Hydrau XR, Final Drive Oil - Low Vis Hygard	8020	\$578.00
Optional Factory Fill. Intended for colder climates with extreme cold ambient temperatures, provides All-Season capability in ambient temperature ranging from -40C to 40C (-40F to 104F).		

#### ▼ CANOPY OR CAB

Description	Code	Price
Canopy with Under-Seat Heater	5025	No Added Cost
Cab With Roof Mounted Air Conditioner/Heater	5085	\$22,995.00

#### ▼ SEAT

Description	Code	Price
Air Suspension Comfort Control High Back Vinyl Seat	5855	No Added Cost
Vinyl-covered high-back seat includes pan tilt, pan extend, lumbar adjustment and air suspension with full damping capability. 3 in. (76 mm) retractable seat belt.Requires Code 5025.		
Deluxe Seat, Cloth with Air Suspension	5885	\$662.00
Fabric-covered high-back seat includes pan tilt, pan extend, lumbar adjustment and air suspension with full damping capability. 3 in. (76 mm) retractable seat belt.		
Premium Seat, Heated and Ventilated with Air Suspension	5890	\$1,020.00
Leather-accented high-back seat includes pan tilt, pan extend, lumbar adjustment and air suspension with full damping capability. 3 in. (76 mm) retractable seat belt.		

#### ▼ MACHINE CONNECTIVITY

Machine connectivity functions require cellular coverage. Usage of JDLink System requires customer's acceptance of the terms of the John Deere Telematics System Contract.

Option availability limited by specific geographical regions. Please refer to region specific price pages for appropriate ordering codes.

Description	Code	Price
JDLink Ultimate 5 Year Subscription	170C	No Added Cost
<p>Includes JDLink hardware: integrated cab wiring harness, antenna, modular telematics gateway (MTG), and now includes all Ultimate Connectivity features Wireless Data Transfer (WDT) enabling automatic data transfer from TimberMatic and Waratah H16 Measuring Systems to TimberManager and MyJohnDeere, supporting TimberOffice 5 Software. Additionally, Ultimate now includes Limited Internet features supporting optional ForestSight Solutions such as advance mapping systems and Remote Display Access (RDA) features supported by TeamViewer applications. JDLink utilizes cellular and satellite technology infrastructure that is outside the control of John Deere. Changes to that infrastructure may require customers to purchase compatible JDLink hardware to restore functionality. Includes 5 year subscription. Annual subscription renewal required after 5 years for continued functionality. JDLink customer account must be created to access JDLink Ultimate data. Go to <a href="http://www.StellarSupport.com">www.StellarSupport.com</a> to renew or update JDLink subscriptions. Use of this service, and all rights and obligations of John Deere and the Customer (as identified in the applicable agreement), are governed by the terms and conditions outlined in the applicable Services and Software agreements available at <a href="http://www.JohnDeere.com/Agreements">www.JohnDeere.com/Agreements</a>. If these terms and conditions are not agreeable do not proceed and do not use the service.</p>		
JDLink Ultimate Dual 5 Year Subscription	170J	\$1,936.00
<p>Includes JDLink hardware: integrated cab wiring harness, antenna, modular telematics gateway (MTG), and now includes all cellular dependent Ultimate Connectivity features Wireless Data Transfer (WDT) enabling automatic data transfer from TimberMatic and Waratah H16 Measuring Systems to TimberManager and MyJohnDeere, supporting TimberOffice 5 Software. Additionally, Ultimate Dual now includes Limited Internet features supporting optional ForestSight Solutions such as advance mapping systems and Remote Display Access (RDA) features supported by TeamViewer applications when cellular signal is available. JD Link Ultimate Dual works with the 4G LTE MTG to automatically transmit compressed summary data over a satellite network when a cellular network is not available. JDLink utilizes cellular and satellite technology infrastructure that is outside the control of John Deere. Changes to that infrastructure may require customers to purchase compatible JDLink hardware to restore functionality. Includes 5 year subscription. Annual subscription renewal required after 5 years for continued functionality. JDLink customer account must be created to access JDLink Ultimate data. Go to <a href="http://www.StellarSupport.com">www.StellarSupport.com</a> to renew or update JDLink subscriptions. Use of this service, and all rights and obligations of John Deere and the Customer (as identified in the applicable agreement), are governed by the terms and conditions outlined in the applicable Services and Software agreements available at <a href="http://www.JohnDeere.com/Agreements">www.JohnDeere.com/Agreements</a>. If these terms and conditions are not agreeable do not proceed and do not use the service.</p>		
No JDLink Ultimate	1741	(\$1,232.00)

#### GRADE CONTROL

Description	Code	Price
SmartGrade Ready including Slope Control	2502	\$6,400.00



SmartGrade Ready includes harnesses, sensors, and controls to enable a future upgrade to SmartGrade 3D Mastless Grade Control using field kit.

Slope Control automatically controls the cross slope and/or mainfall angle without the need for additional equipment (e.g. GNSS, laser reference, etc.). Grade information is displayed through the primary vehicle display.

SmartGrade 3D Mastless Grade Control including Slope Control	2503	\$95,400.00
--	------	-------------

Mastless 3D GNSS grade control system fully integrated into the cab and structures. Consists of dual-band radio that is capable of receiving both UHF and 915 MHz, sensors, integrated display and Topcon software compatible with Topcon file formats. Includes Auto SmartGrade which automatically adjusts the blade when encountering heavy loads, reducing track slip to improve fuel economy and prolong track life. Also includes Remote Display Access (RDA) and Wireless Data Transfer (WDT) for integrated connectivity and support.

Slope Control automatically controls the cross slope and/or mainfall angle without the need for additional equipment (e.g. GNSS, laser reference, etc.). Grade information is displayed through the primary vehicle display.

No Grade Control Installed	2575	No Added Cost
----------------------------	------	---------------

▼ OPERATOR'S MANUAL AND DECALS

Description	Code	Price
English Operator Manual	2605	No Added Cost
Spanish Operator Manual	2610	No Added Cost
French Operator Manual	2615	No Added Cost

**Optional - Select as desired**

▼ FUEL FILTRATION

Description	Code	Price
Severe-Duty Fuel Filter	9060	\$531.00

For use where fuel quality is questionable and/or additional water separation is required. Filter base contains fuel heater.

▼ EXHAUST

Description	Code	Price
Chrome Exhaust	9065	\$520.00

▼ MISCELLANEOUS

Description	Code	Price
Fluid Sample Ports	9070	\$336.00

Quick Service Bank for Transmission, Hydraulic, Engine oil & Engine Coolant Fluid changes	9075	\$900.00
---	------	----------

Remote service banks are located inside engine and tank compartments; utilizes industry standard quick disconnect couplers.

## ▼ COOLANT HEATER

Description	Code	Price
Coolant Heater, Electric	9530	\$144.00
120 Volt		

## ▼ AIR PRE-CLEANER

Description	Code	Price
Engine Air Precleaner - Rotary	9130	\$501.00
Intended for high dust applications to extend engine air filter life. Not required in most applications; will negatively impact over-hood visibility.		

## ▼ WINCH

Description	Code	Price
Model 4000 Standard Speed Winch - Power In, Freespool Out	9401	\$19,065.00
Model 4000 Standard Speed Winch - Power In, Power Out	9402	\$21,516.00
Winch Fairlead, Four Roller	9410	\$3,938.00

## ▼ RADIO

Description	Code	Price
Premium Radio with Bluetooth	9501	\$1,120.00
AM/FM/Weather Band (WB) Radio with Bluetooth, Remote Aux and Remote USB Port		

## ▼ MIRRORS

Description	Code	Price
External Mounted Rear Attachments Mirror	9365	\$133.00

## ▼ MISCELLANEOUS

Description	Code	Price
Automatic Temperature Control	9503	\$530.00
HVAC system automatically adjusts temperature and fan speed to meet desired in-cab temperature.		
Camera Rear View	9504	\$2,035.00
Rear camera view is shown on primary machine display.		
Fire Extinguisher Bracket	9505	\$71.00
Bracket in cab to securely stow 2.5 lbs fire extinguisher.		
Full Screens for Cab	9454	\$8,250.00
Factory designed/installed option. Includes side screens, rear screen, door screens, front screen, and AC condenser guard. For limb risers, order code 9142.		



Rear Screen for Cab	9455	\$1,815.00
---------------------	------	------------

Factory designed/installed option

Rear Screen for Canopy	9450	\$1,415.00
------------------------	------	------------

▼ SHIPPING PREPARATION

Description	Code	Price
Non-Export Rust Preventive Coating	9909	\$151.00

Coating protects exposed unpainted surfaces from road salt during shipment.

▼ GRILLE

Description	Code	Price
Heavy Duty Grille	9325	\$525.00

Reinforced plate grille for increased protection of cooling fan.

▼ WORK LIGHTS

Description	Code	Price
Premium LED Light Package	9166	\$1,300.00

6 high output LED lights (16,800 lumens) replace the 4 standard halogen lights.

▼ 12 VOLT POWER

Description	Code	Price
2nd - 12 Volt Power Port	9370	\$224.00

▼ MISCELLANEOUS

Description	Code	Price
Engine Compartment Light	9180	\$114.00

▼ BEACON LIGHTING

Description	Code	Price
Beacon Light	9521	\$295.00

▼ RIPPER

Description	Code	Price
Heavy Duty Parallelogram Ripper with 5 Shank Pockets and (3) Shank/Teeth	9191	\$16,110.00

Requires code 7760 (4 Section PAT Valve)  
Not for use with other Rear Attachment

▼ HITCHES

Description	Code	Price
Retrieval Hitch w/ Single Rear Counterweight	9340	\$4,291.00

501 kg (1106 lb.)  
Not for use with other rear attachment

Retrieval Hitch w/o Rear Counterweight	9343	\$615.00
--	------	----------

31 kg (68 lb.)  
Not for use with other rear attachment

#### COUNTERWEIGHT

Description	Code	Price
Extended Rigid Drawbar with Single Rear Counterweight	9345	\$5,251.00

562 kg (1240 lb.)  
Not for use with other rear attachment

Single Rear Counterweight	9250	\$3,726.00
---------------------------	------	------------

469 kg (1035 lb.)  
Not for use with other rear attachment

Extended Rigid Drawbar w/o Rear Counterweight	9347	\$1,575.00
---	------	------------

93 kg (205 lb.)  
Includes pin  
Not for use with other rear attachment

Rigid Drawbar for use with Winch	9430	\$695.00
----------------------------------	------	----------

33 kg (73 lb.)  
Only for use with winch

#### GUARDS

Description	Code	Price
Full Length Rock Guards	9150	\$2,100.00

Recommended for applications in rock over 3 in. (76 mm) or sideslopes greater than 2:1.  
Not recommended for waste or other material packing applications.

Limb Risers (Sweeps)	9142	\$3,650.00
----------------------	------	------------

Factory designed/installed option

LGP Final Drive Guard	9139	\$660.00
-----------------------	------	----------

#### ATTACHMENTS FOR FIELD CONVERSION

Description	Code	Price
<u>Frame Attachment</u>		

Front Counterweight, 317 Lb. (144 Kg) - Field Kit	BYT11009	\$1,060.00
---	----------	------------

Heavy Duty Parallelogram Ripper with 5 Shank Pockets and (3) Shank/Teeth - Field Kit	BYT11049	\$15,100.00
--	----------	-------------

#### Guards

Full Enclosure Cab Screens	BYT11935	\$7,750.00
----------------------------	----------	------------

Limb Risers (Sweeps) - Field Kit	BYT11738	\$3,500.00
Rear Screen for Cab	BYT11936	\$1,715.00
Rear Screen for Canopy	BYT11937	\$942.00
<b><u>Hydraulics</u></b>		
Auxiliary Plumbing for Rear Attachment - Field Kit	BYT11921	\$230.00
Auxiliary Plumbing for Rear Attachment - Field Kit	BYT11991	\$310.00
Auxiliary Plumbing for Winch - Field Kit	BYT11922	\$445.00
Auxiliary Valve Section - Field Kit	BYT11900	\$340.00
EH Control & Plumbing for Rear Mechanical Winch - Power In/Freespool Out - Field Kit	BYT11899	\$1,380.00
EH Control & Plumbing for Rear Mechanical Winch - Power In/Power Out - Field Kit	BYT11898	\$2,088.00
<b><u>Operator Environment</u></b>		
Cab Rear View Camera Field Kit	BYT11680	\$2,035.00
Canopy Rear View Camera Field Kit	BYT11700	\$2,035.00
<b><u>Overall Vehicle</u></b>		
Engine Air Precleaner - Rotary - Field Kit	BYT11205	\$501.00
Severe Duty Fuel Filter - Field Kit	BYT11081	\$429.00
<b><u>Powertrain &amp; Cooling</u></b>		
Automatic Reversing Hydraulic Fan - Field Kit	BYT11879	\$1,449.00
Quick Service Bank for Transmission, Hydraulic, Engine Oil & Engine Coolant Fluid Changes - Field Kit	BYT11882	\$724.00



## STANDARD WARRANTY FOR NEW JOHN DEERE CONSTRUCTION, UTILITY, CCE AND FORESTRY PRODUCTS – US & Canada

- **Construction, Forestry & Compact Construction Equipment (CCE) Products\***: 12 months Full Machine Standard Warranty
- **\* Compact Construction Equipment Products** Delivered and settled on or after 01 June 2018: 24 months or 2000 hours (whichever comes first) Full Machine Standard Warranty
- **C&E Series Pull-Type Scrapers**: 6 months Full Machine Standard Warranty
- **DC & DE Series Pull-Type Scrapers**: 12 months Full Machine Standard Warranty
- **Scraper Tractors**: 24 Months or 2000 Hours (whichever occurs first) Full Machine Standard Warranty
- **Forestry Attachments**: 12 Months or 2000 Hours (whichever occurs first) Full Machine Standard Warranty
- **Frontier Equipment**: 6 months Full Machine Standard Warranty (90 days in rental applications)

The "Standard Warranty" is part of the warranty protection package available from John Deere Construction & Forestry Company (John Deere Limited in Canada) ("John Deere") to purchasers of new John Deere products ("product"):

**STANDARD Warranty** is John Deere's standard new product warranty, described in this document, provided at no additional charge to the purchaser.

**EXTENDED Warranty** is a separate repair contract made available by John Deere for purchasers who wish to complement their Standard Warranty coverage. Complete Extended Warranty details, including coverage options and limitations, are set forth in the Application for Extended Warranty, which is available from authorized John Deere dealers.

**STRUCTURALL Warranty** applies to certain structural components as listed below and as described in this document.

**FACTORY-INSTALLED UNDERCARRIAGE Warranty** applies to certain undercarriage components as listed below and as described in this document.

### A. STANDARD WARRANTY - GENERAL PROVISIONS

John Deere will repair or replace, at its option, any parts (except those specified below) of a new John Deere product that, as delivered to the original retail purchaser(s), are defective in material or workmanship. Performance of this warranty will be free of charge for parts and labor/labour, except as otherwise stated below. Standard Warranty applies only to purchases from John Deere and authorized John Deere dealers and, except as otherwise provided in the next sentence and section L below, is extended only to the original retail purchaser of the product. Remaining Standard Warranty applicable to a used John Deere product is transferred to a subsequent purchaser of the product only if the subsequent purchaser requests a transfer from an authorized John Deere dealer before the product's Standard Warranty expires. Coverage begins on the date of delivery of the product to the original retail purchaser. For purposes of this warranty, a product that has been rented, used for demonstration purposes for 150 or more hours, or otherwise used prior to its original retail purchase has been "used" for the total duration of such use. Warranty statements required by law covering engine emissions-related parts and components are found on a separate written warranty certificate provided to the purchaser at the time of the original retail purchase.

### B. WHAT IS COVERED BY STANDARD WARRANTY -

All parts of a new John Deere product (except those noted in Sections D and E below) are covered during the Standard Warranty period set out above.

### C. EXCLUSIVE REMEDY -

The repair or replacement of covered parts or components that are defective, as provided in Sections A, B, D.2 and D.3 herein, shall be the purchaser's exclusive remedy for any defect in the product. However, if after repeated attempts such repair or replacement fails to correct the performance problem caused by the defect, the purchaser's sole remedy shall be a refund of the amount paid for the product (in exchange for a return of the product), excluding any transportation charges, license fees, taxes and insurance premiums, and less a reasonable allowance for use of the product prior to its return. In no event will the dealer, John Deere or any company affiliated with John Deere be liable for any incidental or consequential damages, including but not limited to loss of profits, rental of substitute equipment or other commercial loss. Correction of defects in the manner provided above shall constitute fulfillment of all liabilities of the Dealer, John Deere, or any company affiliated with John Deere to the purchaser or any other



person, whether based upon contract, tort, strict liability, or otherwise. This limitation does not apply to claims for personal injury.

#### D. ITEMS COVERED SEPARATELY -

1. Standard Warranty does not apply to batteries, radios, tires, cameras, or to Cummins, MTU or Detroit Diesel Engines installed in John Deere products, which are covered by separate written warranties.
2. Factory-Installed Undercarriage Warranty covers all non-rubberized factory-installed undercarriage wear components for 3 years or 4,000 hours from the date of delivery to the original retail purchaser, whichever occurs first (unless terminated earlier under Section F, below). For purposes of this warranty, a product that has been rented, used for demonstration purposes for 150 or more hours, or otherwise used prior to its original retail purchase has been "used" for the total duration of such use. In addition to the items listed in section E below, Factory-Installed Undercarriage Warranty does not cover: failures due to wear, machine application, maintenance practices, or improper machine configuration; removal and installation labor/labour; transportation or hauling costs; unapproved parts; non-wear items; and rubberized undercarriage components such as rubber tracks. Warranty claims will be pro-rated based upon wear of the failed component and whether track shoe width is approved by John Deere. Factory-Installed Undercarriage Warranty does not apply to Scraper Tractors.
3. StructurALL Warranty for new John Deere Products (except Compact Excavators & Loaders, Skid-Steer Loaders, Compact Track Loaders, Scraper Tractors, Pull-Type Scrapers, and Forestry Attachments, which are not eligible for StructurALL Warranty) begins at the date of delivery to the original retail purchaser and ends (unless terminated earlier under Section F, below) after three (3) years, or 10,000 hours (whichever occurs first). For purposes of this warranty, a product that has been rented, used for demonstration purposes for 150 or more hours, or otherwise used prior to its original retail purchase has been "used" for the total duration of such use. **StructurALL Warranty applies only to the following structural components listed below as installed on the product at the time of original manufacture.** If a particular component is not listed below it is not covered by StructurALL Warranty.

Arm; Articulation Joint (incl. pins & bushings); Bin Frame; Boom; Carbody; C-Frame\*; Circle Frame; Coupler (John Deere built ONLY); Dipperstick; Draft Frame; Engine Frame; Equipment Frame; Grapple Arch and Grapple Boom; Loader Arm; Loader Frame; Mainframe; Moldboard Lift Arm; NeverGrease™ Pin Joints [Includes steering pin and bushing joints (standard equipment), roller elements (roller bearings) in bucket to boom joints and sliding elements (bushing) for boom and linkage joints (optional equipment)]; Rollover Protection Structure (ROPS); Side Frame; Swing Frame; Track Frame; Undercarriage Frame; X-Frame; Z-bar loader linkage (including bell crank and bucket driver link); Specialty booms and arms marketed as "heavy duty" by John Deere.

*Items Covered by StructurALL for Cut-to-Length Forestry Machines:* Front frame (welded assembly); Rear frame (welded assembly); Crane king post with basement; Middle joint frame; Cabin swing frame; Main Boom

StructurALL Warranty does not apply to:

1. Any product used primarily in extreme duty or severe duty applications such as but not limited to: demolition and wrecking, chemical plant (including fertilizer plants), salt mines, steel mill, land fill and transfer stations, scrap handling, scarifying and other applications that are similarly destructive or similarly heavy duty except specialty booms and arms as stated in Section D.3 above.
2. C-Frames on H-Series & J-Series Crawlers equipped with root rakes or used in forestry applications unless equipped with an "extreme duty" reinforcement package.
3. Cut-to-Length Forestry Heads and Slash Bundler Units.
4. Crawlers equipped with optional side booms.
5. Cut-to-Length Forestry, Excavator, and Log Loader swing bearings.
6. Motor Graders equipped with front- or rear-mounted snow wings.



#### **E. ITEMS NOT COVERED -**

John Deere is NOT responsible for the following:

1. Freight
2. Adjustments to compensate for wear, for periodic maintenance or adjustments that result from normal wear and tear.
3. Damage caused by unapproved adjustments (electronic or mechanical) to machine or machine components outside of published specifications including but not limited to engine, hydraulic components and relief valves.
4. Program updates, calibrations, and pressure adjustments.
5. Diagnostic Time
6. Additional Labor/Labour Time - Above SPG/Labor/Labour Rate
7. Additional Cleaning - Above SPG/Labor/Labour Rate
8. Rental Fees
9. Depreciation or damage caused by normal wear or application, lack of reasonable and proper maintenance, failure to follow operating instructions, misuse, negligence, collision or other accidents.
10. Premiums charged for Overtime Labor/Labour
11. Transportation to and from the dealership.
12. Travel time, mileage or service calls by the dealer.
13. Non-John Deere components or modifications, Rotobec grapples, and attachments installed aftermarket.
14. Shop supplies and maintenance items such as, but not limited to: filters, fuels, oil, hydraulic fluid, lubricants, coolants, conditioners, shop towels, cleaners and degreasers. Note: Reimbursement for refills of oils/coolants lost due to a warrantable failure is covered when a system failure occurs outside the boundaries of a normal oil change (within 25% of specified change interval as provided in the Operator's Manual).
15. Torn, cut, or worn hoses.
16. Wear items, such as, but not limited to: body liner, belts, blades, bulbs, lubricated joints (including pins and bushings), dry brakes, brake linings, dry clutch linings, saw blades, chains, skidder grapple shocks, color marking nozzles, and articulation bumpers.
17. Items such as cutting-edge parts, delimbing knives, bucket teeth and rubber track are not warranted for depreciation or damage caused by normal wear, lack of proper maintenance, misuse, failure to follow operating instructions, the elements or accident.
18. Any defect in a non-covered component, or damage to or failure of a covered component caused by a defect in a non-covered component.
19. Secondary damage which occurs from continued operation of a product after recognition of the occurrence of a failure.
20. Parts supplied or modifications done by third party suppliers.
21. Topping off fluids when fluid levels fall in the range between low and full
22. Parts/Kits not ordered on machine and installed aftermarket. These parts will be covered by any applicable parts warranty.
23. Attachments installed aftermarket – i.e. Winch not installed at factory.
24. Custom options installed outside the factory – i.e. G.R. Manufacturing option packages.
25. Used Products (except as otherwise provided in section L below).

#### **F. TERMINATION OF WARRANTY-**

John Deere is relieved of its obligations under Standard Warranty, StructurALL Warranty, Factory-Installed Undercarriage Warranty and/or Extended Warranty if:

1. Service (other than normal maintenance and replacement of service items) is performed by someone other than an authorized John Deere dealer; or
2. The product is modified or altered in ways not approved by John Deere; or
3. Any unapproved or improperly sized attachment is installed on the product. Approval and attachment size shall be at John Deere's sole discretion. (Consult dealer prior to installing attachments or product modification).
4. The product is moved outside the US and/or Canada.

#### **G. PARTS REPLACED UNDER WARRANTY -**

Only new or remanufactured parts or components furnished or approved by John Deere, will be used if John Deere elects to repair the product. If any such part or component is defective in material or workmanship when installed in the product, John Deere will repair or replace, as it elects, such defective part or component, provided the defect is



reported to an authorized John Deere dealer within 90 days of installation or before expiration of the applicable Standard Warranty, Factory-Installed Undercarriage Warranty and/or StructurALL Warranty whichever is later.

#### **H. TELEMATICS**

*NOTICE: Products may be equipped with telematics hardware and software ("Telematics") that transmit data to John Deere/ Dealer. Purchaser may deactivate Telematics at [www.jdlink.com](http://www.jdlink.com).*

Notwithstanding Purchaser's right, title or interest in the Products, Purchaser agrees that John Deere and Dealer (their affiliates, successors and assigns), without further notice to Purchaser have the right to:

1. Access, use, collect and disclose any data generated by, collected by, or stored in, Products or any hardware or devices interfacing with Products ("Machine Data");
2. Access Machine Data directly through data reporting devices integrated within, or attached to, Products, including Telematics ("Data Reporting Systems"); and
3. Update the Data Reporting Systems software from time to time. Machine Data will only be used in accordance with John Deere's Machine Data Policy, located at [www.JohnDeere.com/MachineDataPolicy](http://www.JohnDeere.com/MachineDataPolicy).

#### **I. OBTAINING WARRANTY SERVICE -**

To obtain warranty service, the purchaser must request warranty service from a John Deere dealer authorized to sell the product to be serviced. When making such a request, the purchaser must present evidence of the product's delivery date, make the product available at the dealer's place of business, and inform the dealer in what way the purchaser believes the product to be defective. Standard Warranty, Factory-Installed Undercarriage Warranty and/or StructurALL Warranty repairs may be made in the field if the purchaser and servicing dealer so desire. However, John Deere will not be responsible for any charges (such as dealer travel time, mileage or extra labor/labour) that would not have been incurred had the product been repaired at the dealer's place of business.

#### **J. NO IMPLIED WARRANTY, CONDITIONS OR OTHER REPRESENTATION -**

Where permitted by law, neither John Deere nor any company affiliated with it makes any warranties, representations, conditions or promises, express or implied, as to the quality, performance, or freedom from defect of its products, other than those set forth in this document and **NO IMPLIED WARRANTY OF MERCHANTABILITY, CONDITIONS OR FITNESS IS MADE.**

#### **K. NO DEALER WARRANTY -**

The selling dealer makes no warranty of its own on any item covered by this warranty, and makes no warranty on other items unless the dealer delivers to the purchaser a separate written warranty certificate specifically warranting the item. **The dealer has no authority to make any representation or promise on behalf of John Deere, or to modify the terms or limitations of this warranty in any way.**

#### **L. USED JOHN DEERE PRODUCTS ONLY -**

John Deere will transfer remaining Standard Warranty, Factory-Installed Undercarriage Warranty and/or StructurALL Warranty to the purchaser of a used John Deere construction and/or forestry product that has been used for less than the full warranty period provided at the product's original retail purchase. This transfer is not effective until change of ownership is registered by a John Deere dealer. **ALL THE TERMS, INCLUDING LIMITATIONS AND EXCLUSIONS, OF THE JOHN DEERE STANDARD WARRANTY, FACTORY-INSTALLED UNDERCARRIAGE WARRANTY, AND/OR STRUCTURALL WARRANTY ORIGINALLY PROVIDED FOR THE PRODUCT REMAIN IN EFFECT AND APPLICABLE.**





Company ID Number: 513478

## THE E-VERIFY PROGRAM FOR EMPLOYMENT VERIFICATION MEMORANDUM OF UNDERSTANDING

### ARTICLE I

#### PURPOSE AND AUTHORITY

This Memorandum of Understanding (MOU) sets forth the points of agreement between the Department of Homeland Security (DHS) and Warrior Tractor & Equipment Co., Inc. (Employer) regarding the Employer's participation in the Employment Eligibility Verification Program (E-Verify). This MOU explains certain features of the E-Verify program and enumerates specific responsibilities of DHS, the Social Security Administration (SSA), and the Employer. E-Verify is a program that electronically confirms an employee's eligibility to work in the United States after completion of the Employment Eligibility Verification Form (Form I-9). For covered government contractors, E-Verify is used to verify the employment eligibility of all newly hired employees and all existing employees assigned to Federal contracts or to verify the entire workforce if the contractor so chooses.

Authority for the E-Verify program is found in Title IV, Subtitle A, of the Illegal Immigration Reform and Immigrant Responsibility Act of 1996 (IIRIRA), Pub. L. 104-208, 110 Stat. 3009, as amended (8 U.S.C. § 1324a note). Authority for use of the E-Verify program by Federal contractors and subcontractors covered by the terms of Subpart 22.18, "Employment Eligibility Verification", of the Federal Acquisition Regulation (FAR) (hereinafter referred to in this MOU as a "Federal contractor with the FAR E-Verify clause") to verify the employment eligibility of certain employees working on Federal contracts is also found in Subpart 22.18 and in Executive Order 12989, as amended.

### ARTICLE II

#### FUNCTIONS TO BE PERFORMED

##### A. RESPONSIBILITIES OF SSA

1. SSA agrees to provide the Employer with available information that allows the Employer to confirm the accuracy of Social Security Numbers provided by all employees verified under this MOU and the employment authorization of U.S. citizens.
2. SSA agrees to provide to the Employer appropriate assistance with operational problems that may arise during the Employer's participation in the E-Verify program. SSA agrees to provide the Employer with names, titles, addresses, and telephone numbers of SSA representatives to be contacted during the E-Verify process.
3. SSA agrees to safeguard the information provided by the Employer through the E-Verify program procedures, and to limit access to such information, as is appropriate by law, to individuals responsible for the verification of Social Security Numbers and for evaluation of the E-Verify program or such other persons or entities who may be authorized by SSA as governed

**Company ID Number: 513478**

by the Privacy Act (5 U.S.C. § 552a), the Social Security Act (42 U.S.C. 1306(a)), and SSA regulations (20 CFR Part 401).

4. SSA agrees to provide a means of automated verification that is designed (in conjunction with DHS's automated system if necessary) to provide confirmation or tentative nonconfirmation of U.S. citizens' employment eligibility within 3 Federal Government work days of the initial inquiry.

5. SSA agrees to provide a means of secondary verification (including updating SSA records as may be necessary) for employees who contest SSA tentative nonconfirmations that is designed to provide final confirmation or nonconfirmation of U.S. citizens' employment eligibility and accuracy of SSA records for both citizens and non-citizens within 10 Federal Government work days of the date of referral to SSA, unless SSA determines that more than 10 days may be necessary. In such cases, SSA will provide additional verification instructions.

## **B. RESPONSIBILITIES OF DHS**

1. After SSA verifies the accuracy of SSA records for employees through E-Verify, DHS agrees to provide the Employer access to selected data from DHS's database to enable the Employer to conduct, to the extent authorized by this MOU:

- Automated verification checks on employees by electronic means, and
- Photo verification checks (when available) on employees.

2. DHS agrees to provide to the Employer appropriate assistance with operational problems that may arise during the Employer's participation in the E-Verify program. DHS agrees to provide the Employer names, titles, addresses, and telephone numbers of DHS representatives to be contacted during the E-Verify process.

3. DHS agrees to make available to the Employer at the E-Verify Web site and on the E-Verify Web browser, instructional materials on E-Verify policies, procedures and requirements for both SSA and DHS, including restrictions on the use of E-Verify. DHS agrees to provide training materials on E-Verify.

4. DHS agrees to provide to the Employer a notice, which indicates the Employer's participation in the E-Verify program. DHS also agrees to provide to the Employer anti-discrimination notices issued by the Office of Special Counsel for Immigration-Related Unfair Employment Practices (OSC), Civil Rights Division, U.S. Department of Justice.

5. DHS agrees to issue the Employer a user identification number and password that permits the Employer to verify information provided by employees with DHS's database.

6. DHS agrees to safeguard the information provided to DHS by the Employer, and to limit access to such information to individuals responsible for the verification of employees' employment eligibility and for evaluation of the E-Verify program, or to such other persons or entities as may be authorized by applicable law. Information will be used only to verify the accuracy of Social Security Numbers and employment eligibility, to enforce the Immigration and



**Company ID Number: 513478**

Nationality Act (INA) and Federal criminal laws, and to administer Federal contracting requirements.

7. DHS agrees to provide a means of automated verification that is designed (in conjunction with SSA verification procedures) to provide confirmation or tentative nonconfirmation of employees' employment eligibility within 3 Federal Government work days of the initial inquiry.

8. DHS agrees to provide a means of secondary verification (including updating DHS records as may be necessary) for employees who contest DHS tentative nonconfirmations and photo non-match tentative nonconfirmations that is designed to provide final confirmation or nonconfirmation of the employees' employment eligibility within 10 Federal Government work days of the date of referral to DHS, unless DHS determines that more than 10 days may be necessary. In such cases, DHS will provide additional verification instructions.

## **C. RESPONSIBILITIES OF THE EMPLOYER**

1. The Employer agrees to display the notices supplied by DHS in a prominent place that is clearly visible to prospective employees and all employees who are to be verified through the system.

2. The Employer agrees to provide to the SSA and DHS the names, titles, addresses, and telephone numbers of the Employer representatives to be contacted regarding E-Verify.

3. The Employer agrees to become familiar with and comply with the most recent version of the E-Verify User Manual.

4. The Employer agrees that any Employer Representative who will perform employment verification queries will complete the E-Verify Tutorial before that individual initiates any queries.

A. The Employer agrees that all Employer representatives will take the refresher tutorials initiated by the E-Verify program as a condition of continued use of E-Verify.

B. Failure to complete a refresher tutorial will prevent the Employer from continued use of the program.

5. The Employer agrees to comply with current Form I-9 procedures, with two exceptions:

- If an employee presents a "List B" identity document, the Employer agrees to only accept "List B" documents that contain a photo. (List B documents identified in 8 C.F.R. § 274a.2(b)(1)(B)) can be presented during the Form I-9 process to establish identity.) If an employee objects to the photo requirement for religious reasons, the Employer should contact E-Verify at 888-464-4218.

- If an employee presents a DHS Form I-551 (Permanent Resident Card) or Form I-766 (Employment Authorization Document) to complete the Form I-9, the Employer agrees to make a photocopy of the document and to retain the photocopy with the employee's Form I-9. The photocopy must be of sufficient quality to allow for verification of the photo



**Company ID Number: 513478**

and written information. The employer will use the photocopy to verify the photo and to assist DHS with its review of photo non-matches that are contested by employees. Note that employees retain the right to present any List A, or List B and List C, documentation to complete the Form I-9. DHS may in the future designate other documents that activate the photo screening tool.

6. The Employer understands that participation in E-Verify does not exempt the Employer from the responsibility to complete, retain, and make available for inspection Forms I-9 that relate to its employees, or from other requirements of applicable regulations or laws, including the obligation to comply with the antidiscrimination requirements of section 274B of the INA with respect to Form I-9 procedures, except for the following modified requirements applicable by reason of the Employer's participation in E-Verify: (1) identity documents must have photos, as described in paragraph 5 above; (2) a rebuttable presumption is established that the Employer has not violated section 274A(a)(1)(A) of the Immigration and Nationality Act (INA) with respect to the hiring of any individual if it obtains confirmation of the identity and employment eligibility of the individual in good faith compliance with the terms and conditions of E-Verify; (3) the Employer must notify DHS if it continues to employ any employee after receiving a final nonconfirmation, and is subject to a civil money penalty between \$550 and \$1,100 for each failure to notify DHS of continued employment following a final nonconfirmation; (4) the Employer is subject to a rebuttable presumption that it has knowingly employed an unauthorized alien in violation of section 274A(a)(1)(A) if the Employer continues to employ an employee after receiving a final nonconfirmation; and (5) no person or entity participating in E-Verify is civilly or criminally liable under any law for any action taken in good faith based on information provided through the confirmation system. DHS reserves the right to conduct Form I-9 and E-Verify system compliance inspections during the course of E-Verify, as well as to conduct any other enforcement activity authorized by law.

7. The Employer agrees to initiate E-Verify verification procedures for new employees within 3 Employer business days after each employee has been hired (but after the Form I-9 has been completed), and to complete as many (but only as many) steps of the E-Verify process as are necessary according to the E-Verify User Manual, or in the case of Federal contractors with the FAR E-Verify clause, the E-Verify User Manual for Federal Contractors. The Employer is prohibited from initiating verification procedures before the employee has been hired and the Form I-9 completed. If the automated system to be queried is temporarily unavailable, the 3-day time period is extended until it is again operational in order to accommodate the Employer's attempting, in good faith, to make inquiries during the period of unavailability. Employers may initiate verification by notating the Form I-9 in circumstances where the employee has applied for a Social Security Number (SSN) from the SSA and is waiting to receive the SSN, provided that the Employer performs an E-Verify employment verification query using the employee's SSN as soon as the SSN becomes available.

8. The Employer agrees not to use E-Verify procedures for pre-employment screening of job applicants, in support of any unlawful employment practice, or for any other use not authorized by this MOU. Employers must use E-Verify for all new employees, unless an Employer is a Federal contractor that qualifies for the exceptions described in Article II.D.1.c. Except as provided in Article II.D, the Employer will not verify selectively and will not verify employees hired before the effective date of this MOU. The Employer understands that if the Employer



**Company ID Number: 513478**

uses the E-Verify system for any purpose other than as authorized by this MOU, the Employer may be subject to appropriate legal action and termination of its access to SSA and DHS information pursuant to this MOU.

9. The Employer agrees to follow appropriate procedures (see Article III. below) regarding tentative nonconfirmations, including notifying employees in private of the finding and providing them written notice of the findings, providing written referral instructions to employees, allowing employees to contest the finding, and not taking adverse action against employees if they choose to contest the finding. Further, when employees contest a tentative nonconfirmation based upon a photo non-match, the Employer is required to take affirmative steps (see Article III.B. below) to contact DHS with information necessary to resolve the challenge.

10. The Employer agrees not to take any adverse action against an employee based upon the employee's perceived employment eligibility status while SSA or DHS is processing the verification request unless the Employer obtains knowledge (as defined in 8 C.F.R. § 274a.1(l)) that the employee is not work authorized. The Employer understands that an initial inability of the SSA or DHS automated verification system to verify work authorization, a tentative nonconfirmation, a case in continuance (indicating the need for additional time for the government to resolve a case), or the finding of a photo non-match, does not establish, and should not be interpreted as evidence, that the employee is not work authorized. In any of the cases listed above, the employee must be provided a full and fair opportunity to contest the finding, and if he or she does so, the employee may not be terminated or suffer any adverse employment consequences based upon the employee's perceived employment eligibility status (including denying, reducing, or extending work hours, delaying or preventing training, requiring an employee to work in poorer conditions, refusing to assign the employee to a Federal contract or other assignment, or otherwise subjecting an employee to any assumption that he or she is unauthorized to work) until and unless secondary verification by SSA or DHS has been completed and a final nonconfirmation has been issued. If the employee does not choose to contest a tentative nonconfirmation or a photo non-match or if a secondary verification is completed and a final nonconfirmation is issued, then the Employer can find the employee is not work authorized and terminate the employee's employment. Employers or employees with questions about a final nonconfirmation may call E-Verify at 1-888-464-4218 or OSC at 1-800-255-8155 or 1-800-237-2515 (TDD).

11. The Employer agrees to comply with Title VII of the Civil Rights Act of 1964 and section 274B of the INA, as applicable, by not discriminating unlawfully against any individual in hiring, firing, or recruitment or referral practices because of his or her national origin or, in the case of a protected individual as defined in section 274B(a)(3) of the INA, because of his or her citizenship status. The Employer understands that such illegal practices can include selective verification or use of E-Verify except as provided in part D below, or discharging or refusing to hire employees because they appear or sound "foreign" or have received tentative nonconfirmations. The Employer further understands that any violation of the unfair immigration-related employment practices provisions in section 274B of the INA could subject the Employer to civil penalties, back pay awards, and other sanctions, and violations of Title VII could subject the Employer to back pay awards, compensatory and punitive damages. Violations of either section 274B of the INA or Title VII may also lead to the termination of its participation in E-



**Company ID Number: 513478**

Verify. If the Employer has any questions relating to the anti-discrimination provision, it should contact OSC at 1-800-255-8155 or 1-800-237-2515 (TDD).

12. The Employer agrees to record the case verification number on the employee's Form I-9 or to print the screen containing the case verification number and attach it to the employee's Form I-9.

13. The Employer agrees that it will use the information it receives from SSA or DHS pursuant to E-Verify and this MOU only to confirm the employment eligibility of employees as authorized by this MOU. The Employer agrees that it will safeguard this information, and means of access to it (such as PINS and passwords) to ensure that it is not used for any other purpose and as necessary to protect its confidentiality, including ensuring that it is not disseminated to any person other than employees of the Employer who are authorized to perform the Employer's responsibilities under this MOU, except for such dissemination as may be authorized in advance by SSA or DHS for legitimate purposes.

14. The Employer acknowledges that the information which it receives from SSA is governed by the Privacy Act (5 U.S.C. § 552a(i)(1) and (3)) and the Social Security Act (42 U.S.C. 1306(a)), and that any person who obtains this information under false pretenses or uses it for any purpose other than as provided for in this MOU may be subject to criminal penalties.

15. The Employer agrees to cooperate with DHS and SSA in their compliance monitoring and evaluation of E-Verify, including by permitting DHS and SSA, upon reasonable notice, to review Forms I-9 and other employment records and to interview it and its employees regarding the Employer's use of E-Verify, and to respond in a timely and accurate manner to DHS requests for information relating to their participation in E-Verify.

#### **D. RESPONSIBILITIES OF FEDERAL CONTRACTORS WITH THE FAR E-VERIFY CLAUSE**

1. The Employer understands that if it is a subject to the employment verification terms in Subpart 22.18 of the FAR, it must verify the employment eligibility of any existing employee assigned to the contract and all new hires, as discussed in the Supplemental Guide for Federal Contractors. Once an employee has been verified through E-Verify by the Employer, the Employer may not reverify the employee through E-Verify.

a. Federal contractors with the FAR E-Verify clause agree to become familiar with and comply with the most recent versions of the E-Verify User Manual for Federal Contractors and the E-Verify Supplemental Guide for Federal Contractors.

b. Federal contractors with the FAR E-Verify clause agree to complete a tutorial for Federal contractors with the FAR E-Verify clause.

c. Federal contractors with the FAR E-Verify clause not enrolled at the time of contract award: An Employer that is not enrolled in E-Verify at the time of a contract award must enroll as a Federal contractor with the FAR E-Verify clause in E-Verify within 30 calendar days of contract award and, within 90 days of enrollment, begin to use E-Verify to initiate verification of employment eligibility of new hires of the Employer who are working in the United States,



**Company ID Number: 513478**

whether or not assigned to the contract. Once the Employer begins verifying new hires, such verification of new hires must be initiated within 3 business days after the date of hire. Once enrolled in E-Verify as a Federal contractor with the FAR E-Verify clause, the Employer must initiate verification of employees assigned to the contract within 90 calendar days from the time of enrollment in the system and after the date and selecting which employees will be verified in E-Verify or within 30 days of an employee's assignment to the contract, whichever date is later.

d. Employers that are already enrolled in E-Verify at the time of a contract award but are not enrolled in the system as a Federal contractor with the FAR E-Verify clause: Employers enrolled in E-Verify for 90 days or more at the time of a contract award must use E-Verify to initiate verification of employment eligibility for new hires of the Employer who are working in the United States, whether or not assigned to the contract, within 3 business days after the date of hire. Employers enrolled in E-Verify as other than a Federal contractor with the FAR E-Verify clause, must update E-Verify to indicate that they are a Federal contractor with the FAR E-Verify clause within 30 days after assignment to the contract. If the Employer is enrolled in E-Verify for 90 calendar days or less at the time of contract award, the Employer must, within 90 days of enrollment, begin to use E-Verify to initiate verification of new hires of the contractor who are working in the United States, whether or not assigned to the contract. Such verification of new hires must be initiated within 3 business days after the date of hire. An Employer enrolled as a Federal contractor with the FAR E-Verify clause in E-Verify must initiate verification of each employee assigned to the contract within 90 calendar days after date of contract award or within 30 days after assignment to the contract, whichever is later.

e. Institutions of higher education, State, local and tribal governments and sureties: Federal contractors with the FAR E-Verify clause that are institutions of higher education (as defined at 20 U.S.C. 1001(a)), State or local governments, governments of Federally recognized Indian tribes, or sureties performing under a takeover agreement entered into with a Federal agency pursuant to a performance bond may choose to only verify new and existing employees assigned to the Federal contract. Such Federal contractors with the FAR E-Verify clause may, however, elect to verify all new hires, and/or all existing employees hired after November 6, 1986. The provisions of Article II.D, paragraphs 1.a and 1.b of this MOU providing timeframes for initiating employment verification of employees assigned to a contract apply to such institutions of higher education, State, local and tribal governments, and sureties.

f. Verification of all employees: Upon enrollment, Employers who are Federal contractors with the FAR E-Verify clause may elect to verify employment eligibility of all existing employees working in the United States who were hired after November 6, 1986, instead of verifying only new employees and those existing employees assigned to a covered Federal contract. After enrollment, Employers must elect to do so only in the manner designated by DHS and initiate E-Verify verification of all existing employees within 180 days after the election.

g. Form I-9 procedures for existing employees of Federal contractors with the FAR E-Verify clause: Federal contractors with the FAR E-Verify clause may choose to complete new Forms I-9 for all existing employees other than those that are completely exempt from this process. Federal contractors with the FAR E-Verify clause may also update previously completed Forms I-9 to initiate E-Verify verification of existing employees who are not completely exempt as long as that Form I-9 is complete (including the SSN), complies with



**Company ID Number: 513478**

Article II.C.5, the employee's work authorization has not expired, and the Employer has reviewed the information reflected in the Form I-9 either in person or in communications with the employee to ensure that the employee's stated basis in section 1 of the Form I-9 for work authorization has not changed (including, but not limited to, a lawful permanent resident alien having become a naturalized U.S. citizen). If the Employer is unable to determine that the Form I-9 complies with Article II.C.5, if the employee's basis for work authorization as attested in section 1 has expired or changed, or if the Form I-9 contains no SSN or is otherwise incomplete, the Employer shall complete a new I-9 consistent with Article II.C.5, or update the previous I-9 to provide the necessary information. If section 1 of the Form I-9 is otherwise valid and up-to-date and the form otherwise complies with Article II.C.5, but reflects documentation (such as a U.S. passport or Form I-551) that expired subsequent to completion of the Form I-9, the Employer shall not require the production of additional documentation, or use the photo screening tool described in Article II.C.5, subject to any additional or superseding instructions that may be provided on this subject in the Supplemental Guide for Federal Contractors. Nothing in this section shall be construed to require a second verification using E-Verify of any assigned employee who has previously been verified as a newly hired employee under this MOU, or to authorize verification of any existing employee by any Employer that is not a Federal contractor with the FAR E-Verify clause.

2. The Employer understands that if it is a Federal contractor with the FAR E-Verify clause, its compliance with this MOU is a performance requirement under the terms of the Federal contract or subcontract, and the Employer consents to the release of information relating to compliance with its verification responsibilities under this MOU to contracting officers or other officials authorized to review the Employer's compliance with Federal contracting requirements.

### **ARTICLE III**

## **REFERRAL OF INDIVIDUALS TO SSA AND DHS**

### **A. REFERRAL TO SSA**

1. If the Employer receives a tentative nonconfirmation issued by SSA, the Employer must print the notice as directed by the E-Verify system and provide it to the employee so that the employee may determine whether he or she will contest the tentative nonconfirmation. The Employer must review the tentative nonconfirmation with the employee in private.

2. The Employer will refer employees to SSA field offices only as directed by the automated system based on a tentative nonconfirmation, and only after the Employer records the case verification number, reviews the input to detect any transaction errors, and determines that the employee contests the tentative nonconfirmation. The Employer will transmit the Social Security Number to SSA for verification again if this review indicates a need to do so. The Employer will determine whether the employee contests the tentative nonconfirmation as soon as possible after the Employer receives it.

3. If the employee contests an SSA tentative nonconfirmation, the Employer will provide the employee with a system-generated referral letter and instruct the employee to visit an SSA office within 8 Federal Government work days. SSA will electronically transmit the result of the referral to the Employer within 10 Federal Government work days of the referral unless it



**Company ID Number: 513478**

determines that more than 10 days is necessary. The Employer agrees to check the E-Verify system regularly for case updates.

4. The Employer agrees not to ask the employee to obtain a printout from the Social Security Number database (the Numident) or other written verification of the Social Security Number from the SSA.

## **B. REFERRAL TO DHS**

1. If the Employer receives a tentative nonconfirmation issued by DHS, the Employer must print the tentative nonconfirmation notice as directed by the E-Verify system and provide it to the employee so that the employee may determine whether he or she will contest the tentative nonconfirmation. The Employer must review the tentative nonconfirmation with the employee in private.

2. If the Employer finds a photo non-match for an employee who provides a document for which the automated system has transmitted a photo, the employer must print the photo non-match tentative nonconfirmation notice as directed by the automated system and provide it to the employee so that the employee may determine whether he or she will contest the finding. The Employer must review the tentative nonconfirmation with the employee in private.

3. The Employer agrees to refer individuals to DHS only when the employee chooses to contest a tentative nonconfirmation received from DHS automated verification process or when the Employer issues a tentative nonconfirmation based upon a photo non-match. The Employer will determine whether the employee contests the tentative nonconfirmation as soon as possible after the Employer receives it.

4. If the employee contests a tentative nonconfirmation issued by DHS, the Employer will provide the employee with a referral letter and instruct the employee to contact DHS through its toll-free hotline (as found on the referral letter) within 8 Federal Government work days.

5. If the employee contests a tentative nonconfirmation based upon a photo non-match, the Employer will provide the employee with a referral letter to DHS. DHS will electronically transmit the result of the referral to the Employer within 10 Federal Government work days of the referral unless it determines that more than 10 days is necessary. The Employer agrees to check the E-Verify system regularly for case updates.

6. The Employer agrees that if an employee contests a tentative nonconfirmation based upon a photo non-match, the Employer will send a copy of the employee's Form I-551 or Form I-766 to DHS for review by:

- Scanning and uploading the document, or
- Sending a photocopy of the document by an express mail account (paid for at employer expense).

7. If the Employer determines that there is a photo non-match when comparing the photocopied List B document described in Article II.C.5 with the image generated in E-Verify, the Employer must forward the employee's documentation to DHS using one of the means described in the preceding paragraph, and allow DHS to resolve the case.



Company ID Number: 513478

## ARTICLE IV

### SERVICE PROVISIONS

SSA and DHS will not charge the Employer for verification services performed under this MOU. The Employer is responsible for providing equipment needed to make inquiries. To access E-Verify, an Employer will need a personal computer with Internet access.

## ARTICLE V

### PARTIES

A. This MOU is effective upon the signature of all parties, and shall continue in effect for as long as the SSA and DHS conduct the E-Verify program unless modified in writing by the mutual consent of all parties, or terminated by any party upon 30 days prior written notice to the others. Any and all system enhancements to the E-Verify program by DHS or SSA, including but not limited to the E-Verify checking against additional data sources and instituting new verification procedures, will be covered under this MOU and will not cause the need for a supplemental MOU that outlines these changes. DHS agrees to train employers on all changes made to E-Verify through the use of mandatory refresher tutorials and updates to the E-Verify User Manual, the E-Verify User Manual for Federal Contractors or the E-Verify Supplemental Guide for Federal Contractors. Even without changes to E-Verify, DHS reserves the right to require employers to take mandatory refresher tutorials. An Employer that is a Federal contractor with the FAR E-Verify clause may terminate this MOU when the Federal contract that requires its participation in E-Verify is terminated or completed. In such a circumstance, the Federal contractor with the FAR E-Verify clause must provide written notice to DHS. If an Employer that is a Federal contractor with the FAR E-Verify clause fails to provide such notice, that Employer will remain a participant in the E-Verify program, will remain bound by the terms of this MOU that apply to participants that are not Federal contractors with the FAR E-Verify clause, and will be required to use the E-Verify procedures to verify the employment eligibility of all newly hired employees.

B. Notwithstanding Article V, part A of this MOU, DHS may terminate this MOU if deemed necessary because of the requirements of law or policy, or upon a determination by SSA or DHS that there has been a breach of system integrity or security by the Employer, or a failure on the part of the Employer to comply with established procedures or legal requirements. The Employer understands that if it is a Federal contractor with the FAR E-Verify clause, termination of this MOU by any party for any reason may negatively affect its performance of its contractual responsibilities.

C. Some or all SSA and DHS responsibilities under this MOU may be performed by contractor(s), and SSA and DHS may adjust verification responsibilities between each other as they may determine necessary. By separate agreement with DHS, SSA has agreed to perform its responsibilities as described in this MOU.

**Company ID Number: 513478**

D. Nothing in this MOU is intended, or should be construed, to create any right or benefit, substantive or procedural, enforceable at law by any third party against the United States, its agencies, officers, or employees, or against the Employer, its agents, officers, or employees.

E. Each party shall be solely responsible for defending any claim or action against it arising out of or related to E-Verify or this MOU, whether civil or criminal, and for any liability wherefrom, including (but not limited to) any dispute between the Employer and any other person or entity regarding the applicability of Section 403(d) of IIRIRA to any action taken or allegedly taken by the Employer.

F. The Employer understands that the fact of its participation in E-Verify is not confidential information and may be disclosed as authorized or required by law and DHS or SSA policy, including but not limited to, Congressional oversight, E-Verify publicity and media inquiries, determinations of compliance with Federal contractual requirements, and responses to inquiries under the Freedom of Information Act (FOIA).

G. The foregoing constitutes the full agreement on this subject between DHS and the Employer.

H. The individuals whose signatures appear below represent that they are authorized to enter into this MOU on behalf of the Employer and DHS respectively.





Company ID Number: 513478

To be accepted as a participant in E-Verify, you should only sign the Employer's Section of the signature page. If you have any questions, contact E-Verify at 888-464-4218.

<b>Employer Warrior Tractor &amp; Equipment Co., Inc.</b>	
<b>Stanley McCracken</b>	
Name (Please Type or Print)	Title
<b>Electronically Signed</b>	<b>03/01/2012</b>
Signature	Date
<b>Department of Homeland Security – Verification Division</b>	
<b>USCIS Verification Division</b>	
Name (Please Type or Print)	Title
<b>Electronically Signed</b>	<b>03/01/2012</b>
Signature	Date

Information Required for the E-Verify Program

Information relating to your Company:

Company Name:	Warrior Tractor & Equipment Co., Inc.
Company Facility Address:	6801 McFarland Blvd
	Northport, AL 35476
Company Alternate Address:	P O Box 412
	Northport, AL 35476
County or Parish:	TUSCALOOSA
Employer Identification Number:	630588737

**Company ID Number: 513478**

North American Industry Classification Systems Code:	423
Administrator:	Warrior Tractor and Equipment Co., Inc.
Number of Employees:	100 to 499
Number of Sites Verified for:	1
<b>Are you verifying for more than 1 site? If yes, please provide the number of sites verified for in each State:</b>	
<ul style="list-style-type: none"><li>• ALABAMA 1 site(s)</li></ul>	

**Information relating to the Program Administrator(s) for your Company on policy questions or operational problems:**

Name:	Stanley N McCracken	Fax Number:	(205) 333 - 0101
Telephone Number:	(205) 339 - 0300		
E-mail Address:	wte024@warriortractor.com		



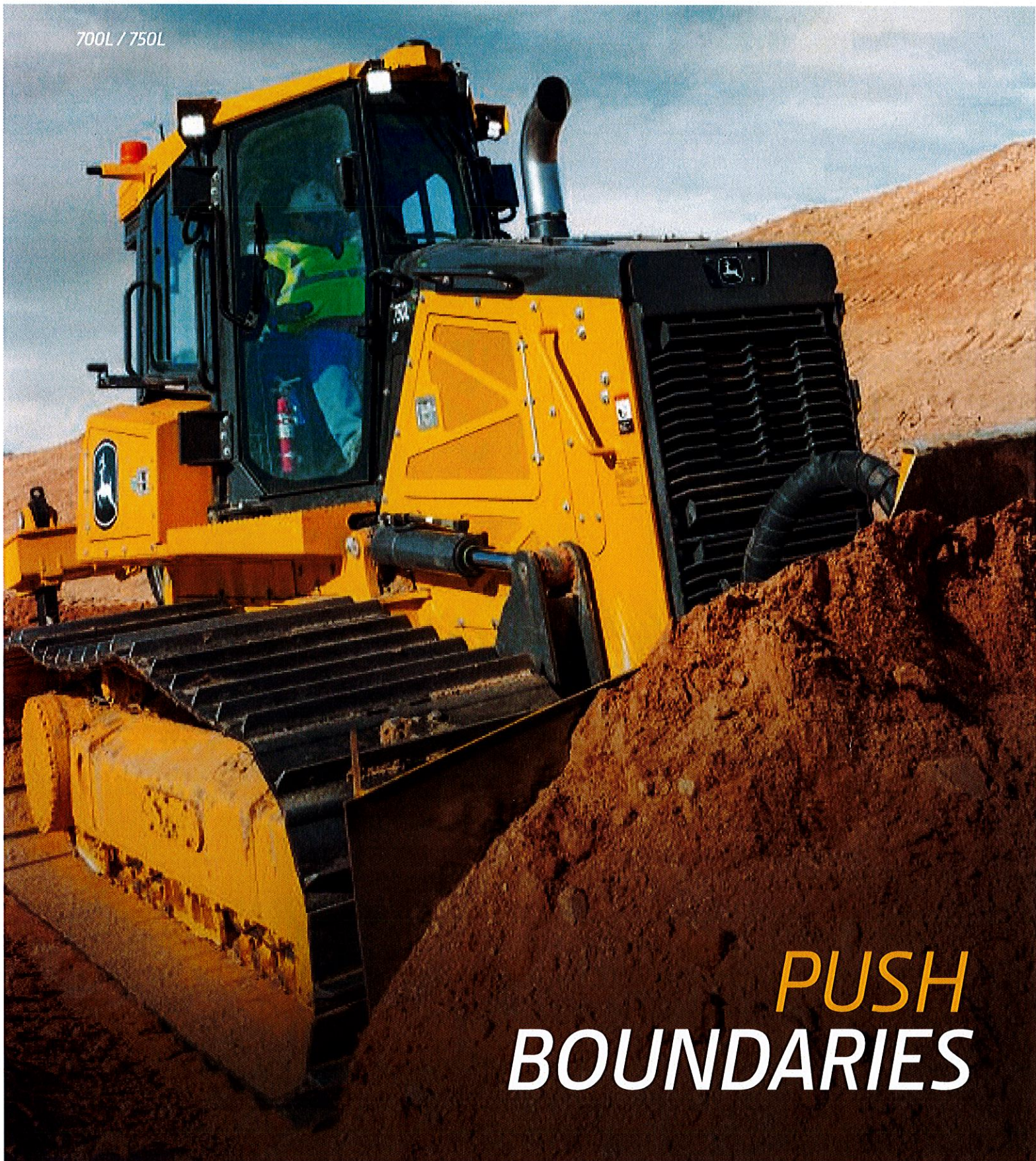
L-SERIES  
**CRAWLER DOZERS**



JOHN DEERE

700L / 750L

*PUSH*  
**BOUNDARIES**







***UNS***





+



+



POWERFUL

RELIABLE

COMFORTABLE



***TOPPABLE.***





700L  
LGP

## ***TAKE ON MORE.***

Boasting increased horsepower, comfort, and reliability over previous K-Series models, the 700L and 750L Dozers are ready to take on all comers. The quieter, roomier cab enables better visibility to the blade while providing additional storage. Slope Control and SmartGrade™ options help operators achieve finish grades with less effort and fewer corrections. Plus simplified hydraulic and electrical routing helps boost reliability — for the dependable productivity you need to take on your next job.



# POWER SURGE

## GET CHARGED UP ABOUT PRODUCTIVITY.

Whether you're into site development or roadbuilding, the 700L and 750L deliver the performance, reliability, and ease of operation you need.

### Quiet comfort

Completely redesigned cab offers better visibility, more spacious comfort, and less noise than its K-Series counterpart, along with options such as automatic temperature control (ATC) system, premium heated/ventilated seat, and rearview camera.



## MOST HORSE- POWER IN THEIR CLASS

### Don't settle for average grades

Standard electrohydraulic (EH) controls make it easy to add the grade-control system of your choice. When you opt for SmartGrade Ready including Slope Control, it's easy to upgrade to the fully integrated John Deere SmartGrade machine-control system.

### The choice is yours

Looking for the most powerful dozer in its class? Take a close look at the 750L. Or if you need something slightly smaller but still extremely capable, consider the 700L, with more power and blade capacity than the previous 700K model.

### More power to you

Delivering six-percent more horsepower than the 750K, the 750L powers through. The 700L provides more horsepower than the 700K. Both models have the highest horsepower and largest blade capacity in their size class.

### More reliable routing

Routing of the electrical and hydraulic systems has been significantly simplified to nearly eliminate wear points, improving reliability and ease of maintenance over earlier models.





# IT'S ABOUT FLEXIBILITY

WITH OPTIONAL SLOPE CONTROL AND SMARTGRADE™.

Both the 700L and 750L can be equipped with optional new factory-installed SmartGrade Ready including Slope Control that automatically maintains the blade angle without needing an external laser or GPS. SmartGrade Ready enables easy upgrades to a full SmartGrade 3D grade-control system in the field.



## SLOPE CONTROL EASES THE PATH TO SMARTGRADE

### Push productivity to the limit

Combining more power than any dozer in its class with additional weight over its predecessor, the 750L is 12-percent more productive in backfilling applications than its closest competitor.

### Bigger blades

New 161-inch-wide blade option on the 750L allows you to cover larger jobsites in fewer passes. Integrated welded-on spill sheet on the 700L increases blade capacity up to 24 percent compared to 700K blade options.

### Durable diesel

Unlike many competitor machines that run four-cylinder engines, the 700L features a reliable six-cylinder 6.8L engine that delivers more power than the previous 700K model.

### Turn, turn, turn

Independent track control speeds up or slows down each side, for smooth, full-power turns. Automatic power boost helps carry big blade loads through turns.

### Slope Control

Optional SmartGrade Ready including Slope Control provides simple-to-use grade control that allows operators to set and hold a grade or slope through terrain changes. It helps both new and veteran operators to hold grade with less effort, fewer corrections, and minimal adjustments to the blade.

### A smart choice

SmartGrade features next-generation components and integration, enabling the highest levels of productivity and grading performance.





### **The power of SmartGrade**

Unlike traditional aftermarket grade-control systems that are prone to theft, damage, and complicated installation, purpose-built John Deere SmartGrade Dozers combine powerful mastless technology with our track load-sensing system. These highly productive crawlers feature a fully integrated grade-control system that is easy to set up and run. And they're backed by the Deere dealer network and supported through features like wireless data transfer and remote display access.

### **Extend your workday**

Optional high-output LED lighting package provides additional illumination when you need to work past or before daylight.

### **Outside dozer blade**

With heavy-duty high-profile push beams and a three-position pitch-adjustable semi-U blade, the outside dozer (OSD) blade-equipped 750L Dozer delivers exceptional durability and high-production performance. Heavy-duty crossmembers provide solid lateral support and allow a clear view of the bottom of the blade. Available turnbuckle pitch jack helps fine-tune blade pitch for improved ground penetration and load carrying.



# LOOK FORWARD TO MORE PRODUCTIVITY

*LET'S SEE WHAT YOU CAN DO.*

Boasting better visibility than earlier models and a host of creature comforts, the quiet, spacious cab will help you set your sights (and jobsites) on getting more done.

## **See what you've been missing**

A wider expanse of front glass; a lower, streamlined hood; and larger doors provide better visibility to the blade and the worksite all around.

## **Quality seat time**

Both the standard deluxe fabric-covered seat and the optional premium leather-accented heated/ventilated seat feature pan tilt, pan extend, lumbar adjustment, and air suspension with full damping capability.

## **Peace and quiet**

On the 700L, new rubber-encased viscous cab mounts help reduce noise by over 50 percent compared to the 700K. They also effectively isolate operators from vibration to improve the ride.

## **Low-effort control**

Updated ergonomic joysticks provide intuitive, low-effort control of the transmission, hydraulics, and rear implement.

## **Set and forget**

Optional automatic temperature control (ATC) system allows operators to simply select a desired temperature instead of fiddling with knobs to get comfortable.

## **Keep close tabs on the machine**

Large, easy-to-navigate monitor provides intuitive, push-button access to a wealth of machine information, including temperatures, pressures, and diagnostics. Opt for a rearview camera to display the action behind the machine on the color monitor.

## **Take total control**

Exclusive Total Machine Control (TMC) monitor lets an operator quickly change between machine presets with the simple push of a button, or independently adjust decelerator mode and response, forward/reverse ground-speed ranges, steering modulation, F-N-R shift rate, and forward/reverse speed ratio.







**16%**  
**MORE**  
**GLASS AREA**  
(700L OVER 700K)

**VISIONARY.**



# ***L-SERIES DOZERS WON'T LET UP OR LET YOU DOWN.***

You can count on these dependable workers to tackle your toughest tasks. When you know how they're built, you'll see what the L-Series can take on.

## **Built tough**

The 700L and 750L have been beefed-up with thicker sheet metal; larger doors and hydrostatic pumps; a sealed engine compartment; a simplified, heavier-duty mainframe; and a more robust c-frame-to-mainframe joint (750L only) than previous models.

## **Undercarriage options**


Both models come standard with a durable heavy-duty undercarriage. Or opt for Extended Life undercarriage with SC-2™-treated bushings, a parts coating that delivers up to twice the wear life. Maximum Life undercarriage, with larger components and stronger seals, is available on the 700L.

## **Save fuel**

Standard Eco mode adjusts engine power and transmission settings automatically based on load while maintaining ground speed, improving fuel economy up to 15 percent for both the 700L and 750L with no loss of productivity. Auto-idle also helps save fuel by reducing engine speed when the dozer isn't moving. Auto shutdown turns the engine off after an operator-determined period of idling, further minimizing fuel use while reducing wear on components.

## **Clear the way**

Factory-installed limb risers and screens allow you to put this dozer to work in forestry, land-clearing, and other challenging applications.



# ***NEVER BACK DOWN.***





UP TO

**15%**

**LESS FUEL  
CONSUMPTION**  
THAN K-SERIES MODELS  
WITH ECO MODE\*

*\*With no loss of productivity.*



DEERE



---

# ***BURN LESS, EARN MORE.***

## ***KEEP FUEL AND OPERATING COSTS DOWN.***

### **Minimal maintenance**

Enlarged service doors provide quick access to conveniently located checkpoints and filters. Extended hydraulic and hydrostatic oil-change intervals from 2,000 to 4,000 hours help further minimize maintenance and expense.

### **Reversing cooling fan**

Hydraulic reversing fan (standard on the 750L, optional on the 700L) automatically back-blows the cooler cores at preset intervals. Or simply press a button when conditions demand more frequent cleaning.

### **Now that's smart thinking**

When equipped with optional SmartGrade™ Ready including Slope Control, the 700L and 750L have the versatility of a 2D system combined with 3D accuracy, helping optimize the productivity of your operation.

### **Easy cooling-package cleanout**

Redesigned layout of the single-plane cooling system promotes efficient airflow, extending intervals between cleanouts.





---

Get valuable insight with

**JOHN DEERE WORKSIGHT™**

The John Deere WorkSight suite of construction technology delivers **Productivity Solutions** to help you get more done, more efficiently. The in-base, five-year JDLink™ telematics subscription provides machine location, utilization data, and alerts to help you maximize productivity and efficiency. Other productivity solutions including grade-management and payload-weighting options are also available.

To maximize uptime and lower costs, JDLink telematics also enables **John Deere Connected Support.™** John Deere's centralized Machine Health Monitoring Center analyzes data from thousands of connected machines, identifies trends, and develops recommended actions, called Expert Alerts, to prevent downtime. Dealers use Expert Alerts to proactively address conditions that may otherwise likely lead to downtime. Your dealer can also monitor machine health and leverage remote diagnostics and programming capability to further diagnose problems and even update machine software without a time-consuming trip to the jobsite.







# 700L SPECIFICATIONS

While general information, pictures, and descriptions are provided, some illustrations and text may include product options and accessories NOT AVAILABLE in all regions, and in some countries products and accessories may require modifications or additions to ensure compliance with the local regulations of those countries.

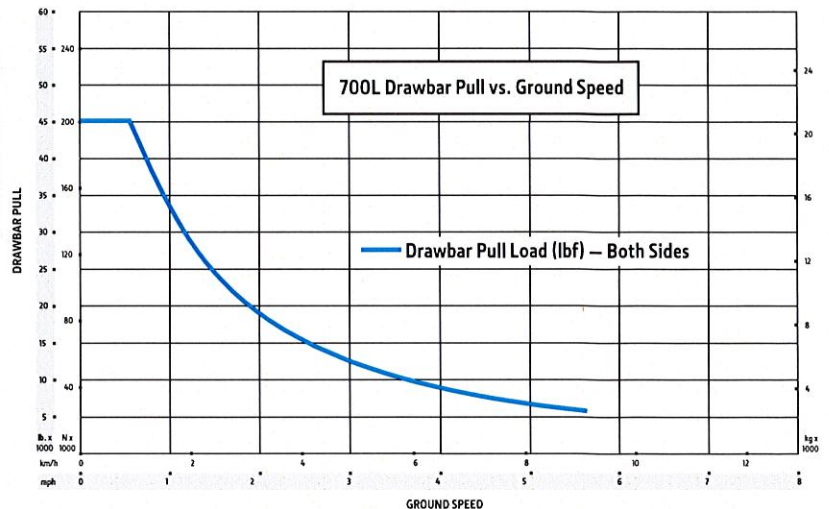
<b>Engine</b>	<b>700L XLT / 700L LGP</b>
<b>Blade Type</b>	<b>Power-Angle-Tilt (PAT)</b>
Manufacturer and Model	John Deere PowerTech™ PVS 6068
Non-Road Emission Standard	EPA Final Tier 4/EU Stage V
Displacement	6.8L (414 cu. in.)
SAE Net Rated Power	101 kW (135 hp) at 1,800 rpm
Aspiration	Turbocharged with charge-air cooler
Air Cleaner	Dual-stage dry tube with tangential unloader

<b>Cooling</b>	
Type	Variable-speed suction fan with optional reversing feature
Engine Coolant Rating	-37 deg. C. (-34 deg. F)
Engine Radiator	10 fins per in.

<b>Powertrain</b>	
Transmission	Automatic, dual-path, hydrostatic (HST) drive; load-sensing feature automatically adjusts speed and power to match changing load conditions; each individually controlled track is powered by a variable-displacement piston pump and motor combination; ground-speed selection buttons on single-lever steering and direction control; reverse speed ratio is fully operator customizable; decelerator pedal provides infinite speed control from full speed to complete stop
System Relief Pressure	47 573 kPa (6,900 psi)
Travel Speeds	
Forward and Reverse	8.9 km/h (5.5 mph)
Maximum (optional)	9.7 km/h (6.0 mph)
<b>Steering</b>	Single-lever steering, speed, direction control, and counter-rotation; full power turns and infinitely variable track speeds provide unlimited maneuverability and optimum control; HST steering eliminates steering clutches and brakes
<b>Final Drives</b>	Triple-reduction final drives mounted independently of track frames and dozer push frames for isolation from shock loads
Total Ratio	33.59 to 1

<b>Drawbar Pull</b>	
Maximum	200 kN (45,050 lb.)
At 1.9 km/h (1.2 mph)	131 kN (29,500 lb.)
At 3.2 km/h (2.0 mph)	83 kN (18,600 lb.)

<b>Brakes</b>	
Service	HST (dynamic) braking stops the machine whenever the direction-control lever is moved to neutral or the decelerator is depressed to the detent
Parking	Exclusive safety feature engages wet, multiple-disc brakes whenever the engine stops, the decelerator is depressed to the end of travel, or motion is detected while the transmission control is in neutral; machine cannot be driven with brake applied, minimizing wearout; spring applied, hydraulic release



<b>Hydraulics</b>	
Type	Open-center hydraulic system with fixed-displacement gear pump
Pump Displacement	47.5 cc
System Relief Pressure	22 063 kPa (3,200 psi)
Maximum Flow at Unloaded High Idle	95 L/m (25 gpm)
Control	3-function electrohydraulic (EH) joystick with proportional roller-angle function

<b>Electrical</b>	
Voltage	24 volts
Capacity	
Battery	950 CCA
Reserve	175 min.



# ZOOL SPECIFICATIONS



While general information, pictures, and descriptions are provided, some illustrations and text may include product options and accessories NOT AVAILABLE in all regions, and in some countries products and accessories may require modifications or additions to ensure compliance with the local regulations of those countries.

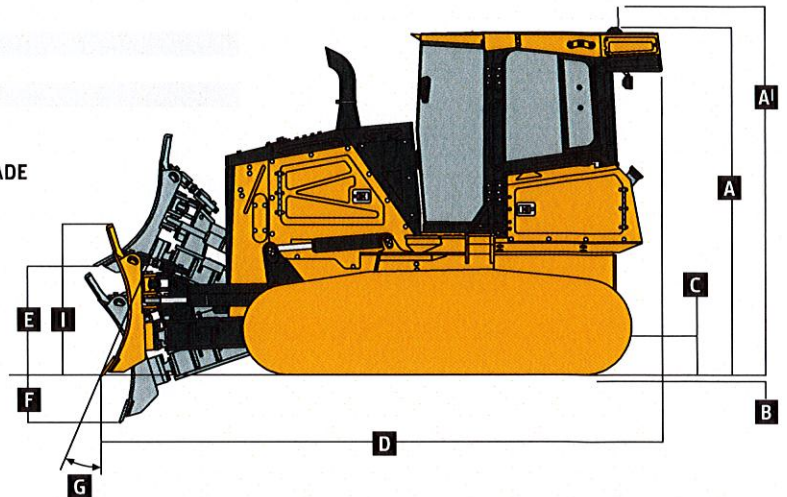
Electrical (continued)		700L XLT / 700L LGP			
Blade Type		PAT			
Alternator Rating					
Cab		145 amp			
Canopy		110 amp			
Lights					
Halogen		Cab-mounted front (2) and cab-mounted rear (2)			
Premium LED		Cab-mounted front (4) and cab-mounted rear (2)			
Undercarriage		700L XLT		700L LGP	
Tracks		John Deere features large deep-heat-treated components; pins and bushings are sealed for life; rollers and idlers are permanently sealed and lubricated; sprockets are segmented; full-length track-frame covers reduce material buildup and ease cleaning			
Track Gauge		1778 mm (70 in.)	1778 mm (70 in.)	1981 mm (78 in.)	1981 mm (78 in.)
Grouser Width		559 mm (22 in.)	559 mm (22 in.)	760 mm (30 in.)	760 mm (30 in.)
Chain		Sealed and lubricated	Sealed and lubricated	Sealed and lubricated	Sealed and lubricated
Shoes, Each Side		39	39	39	39
Track Rollers, Each Side		7	7	7	7
Track Length on Ground		2615 mm (103 in.)	2615 mm (103 in.)	2615 mm (103 in.)	2615 mm (103 in.)
Ground Contact Area		32 569 cm² (5,048 sq. in.)	32 569 cm² (5,048 sq. in.)	44 201 cm² (6,851 sq. in.)	44 201 cm² (6,851 sq. in.)
Ground Pressure		42.2 kPa (6.12 psi)	42.3 kPa (6.14 psi)	32.1 kPa (4.66 psi)	32.3 kPa (4.68 psi)
Track Pitch		191 mm (7.5 in.)	191 mm (7.5 in.)	191 mm (7.5 in.)	191 mm (7.5 in.)
Oscillation at Front Roller		±94 mm (±3.7 in.)	±94 mm (±3.7 in.)	±94 mm (±3.7 in.)	±94 mm (±3.7 in.)
Operator Station		700L XLT / 700L LGP			
ROPS (ISO 3471 – 2008) and FOPS (ISO 3449 – 2005) Level II					
Serviceability					
Refill Capacities					
Fuel Tank With Lockable Cap		262 L (69.2 gal.)			
Diesel Exhaust Fluid (DEF) Tank		14.2 L (3.8 gal.)			
Cooling System With Recovery Tank		31.4 L (8.3 gal.)			
Engine Oil With Filter		28 L (7.4 gal.)			
Transmission/Hydraulic Reservoir With Filter		102 L (26.9 gal.)			
Operating Weights		700L XLT		700L LGP	
Base Weight (with standard equipment, rollover protective structure [ROPS], full fuel tank, and 79-kg [175 lb.] operator)		14 016 kg (30,900 lb.)	14 049 kg (30,973 lb.)	14 489 kg (31,943 lb.)	14 555 kg (32,088 lb.)
Optional Components					
Cab With Pressurizer and Heater/Air Conditioner		230 kg (507 lb.)	230 kg (507 lb.)	230 kg (507 lb.)	230 kg (507 lb.)
Rear Screen					
ROPS Canopy		28 kg (62 lb.)	28 kg (62 lb.)	28 kg (62 lb.)	28 kg (62 lb.)
Cab With Air Conditioner		49 kg (108 lb.)	49 kg (108 lb.)	49 kg (108 lb.)	49 kg (108 lb.)
Screens – Full Enclosure, Cab With Air Conditioner		219 kg (483 lb.)	219 kg (483 lb.)	219 kg (483 lb.)	219 kg (483 lb.)
Limb Risers (ROPS canopy and cab)		182 kg (401 lb.)	182 kg (401 lb.)	182 kg (401 lb.)	182 kg (401 lb.)
Heavy-Duty Grille		13 kg (29 lb.)	13 kg (29 lb.)	13 kg (29 lb.)	13 kg (29 lb.)
Counterweight					
Front		144 kg (317 lb.)	144 kg (317 lb.)	144 kg (317 lb.)	144 kg (317 lb.)
Rear		468 kg (1,032 lb.)	468 kg (1,032 lb.)	468 kg (1,032 lb.)	468 kg (1,032 lb.)
Retrieval Hitch		31 kg (68 lb.)	31 kg (68 lb.)	31 kg (68 lb.)	31 kg (68 lb.)
Drawbar, Extended Rigid		93 kg (205 lb.)	93 kg (205 lb.)	93 kg (205 lb.)	93 kg (205 lb.)
Winch		652 kg (1,437 lb.)	652 kg (1,437 lb.)	652 kg (1,437 lb.)	652 kg (1,437 lb.)
Fairlead, 4 Roller		85 kg (187 lb.)	85 kg (187 lb.)	85 kg (187 lb.)	85 kg (187 lb.)
Full-Length Rock Guards		155 kg (342 lb.)	155 kg (342 lb.)	155 kg (342 lb.)	155 kg (342 lb.)
Maximum Life Undercarriage		211 kg (465 lb.)	211 kg (465 lb.)	211 kg (465 lb.)	211 kg (465 lb.)
Track Shoes					
559 mm (22 in.)		In base	In base	–507 kg (–1,118 lb.)	–507 kg (–1,118 lb.)
610 mm (24 in.)		—	—	–392 kg (–864 lb.)	–392 kg (–864 lb.)
760 mm (30 in.)		—	—	In base	In base



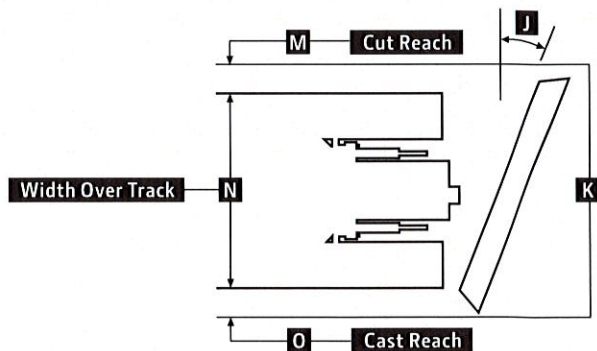
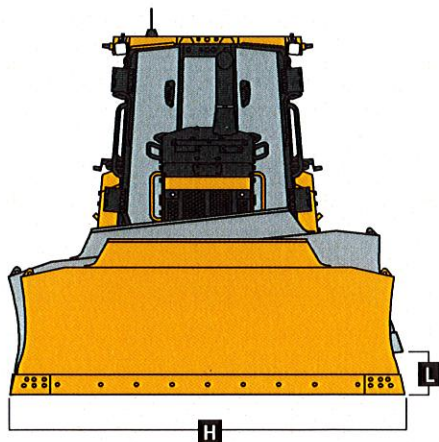
While general information, pictures, and descriptions are provided, some illustrations and text may include product options and accessories NOT AVAILABLE in all regions, and in some countries products and accessories may require modifications or additions to ensure compliance with the local regulations of those countries.

Machine Dimensions		700L XLT / 700L LGP
<b>Blade Type</b>		<b>Power-Angle-Tilt (PAT)</b>
A	Overall Height to Roof (includes antenna base)	3047 mm (10 ft. 0 in.)
A <sup>I</sup>	Overall Height With Limb Risers	3138 mm (10 ft. 4 in.)
B	Tread Depth With Single-Bar Grouser	56 mm (2.2 in.)
C	Ground Clearance in Dirt	387 mm (15.2 in.)
D	Overall Length	4906 mm (193 in.) (16 ft. 1 in.)
D <sup>I</sup>	Overall Length With Extended Drawbar	5078 mm (200 in.) (16 ft. 8 in.)
D <sup>II</sup>	Overall Length With Extended Drawbar and Rear Counterweight	5205 mm (205 in.) (17 ft. 1 in.)
D <sup>III</sup>	Overall Length With Winch and Fairlead Rollers	5474 mm (216 in.) (18 ft. 0 in.)
E	Blade Lift Height	977 mm (38 in.) (3 ft. 2 in.)
F	Blade Digging Depth	536 mm (21 in.)
G	Blade Cutting Edge Angle, Adjustable	51.2 to 58.3 deg.

**700L XLT / 700L LGP WITH POWER-ANGLE-TILT (PAT) BLADE**



Machine Dimensions (continued)		700L XLT	700L LGP		
<b>Straight</b>					
H	Blade Width	3077 mm (121 in.) (10 ft. 1 in.)	3231 mm (127 in.) (10 ft. 7 in.)	3383 mm (133 in.) (11 ft. 1 in.)	3688 mm (145 in.) (12 ft. 1 in.)
I	Blade Height	1322 mm (52 in.) (4 ft. 4 in.)	1322 mm (52 in.) (4 ft. 4 in.)	1322 mm (52 in.) (4 ft. 4 in.)	1322 mm (52 in.) (4 ft. 4 in.)
	SAE Capacity	3.4 m <sup>3</sup> (4.4 cu. yd.)	3.5 m <sup>3</sup> (4.6 cu. yd.)	3.6 m <sup>3</sup> (4.8 cu. yd.)	3.9 m <sup>3</sup> (5.1 cu. yd.)
	Weight	811 kg (1,788 lb.)	844 kg (1,861 lb.)	875 kg (1,929 lb.)	941 kg (2,075 lb.)
	C-Frame Assembly Weight (without blade)	803 kg (1,770 lb.)	803 kg (1,770 lb.)	803 kg (1,770 lb.)	803 kg (1,770 lb.)
J	Blade Angle	25 deg.	25 deg.	25 deg.	25 deg.
K	Overall Width With Blade Angled	2808 mm (111 in.) (9 ft. 3 in.)	2912 mm (115 in.) (9 ft. 7 in.)	3049 mm (120 in.) (10 ft. 0 in.)	3324 mm (131 in.) (10 ft. 11 in.)
L	Blade Tilt	426 mm (17 in.)	447 mm (18 in.)	468 mm (18 in.)	510 mm (20 in.)
M	Cut Reach	0 mm (0 in.)	64 mm (3 in.)	133 mm (5 in.)	270 mm (11 in.)
N	Width Over Track	2338 mm (92 in.) (7 ft. 8 in.)	2338 mm (92 in.) (7 ft. 8 in.)	2741 mm (108 in.) (9 ft. 0 in.)	2741 mm (108 in.) (9 ft. 0 in.)
O	Cast Reach	441 mm (17 in.)	510 mm (20 in.)	378 mm (15 in.)	515 mm (20 in.)





**Rear Ripper** 700L XLT / 700L LGP

**Blade Type** PAT

Multi-shank parallelogram ripper with 5 pockets and 3 shanks

Weight 1444 kg (3,183 lb.)

P Maximum Penetration 563 mm (22 in.)

Q Maximum Clearance Under Tip 584 mm (23 in.)

R Overall Length, Lowered Position 1494 mm (59 in.) (4 ft. 11 in.)

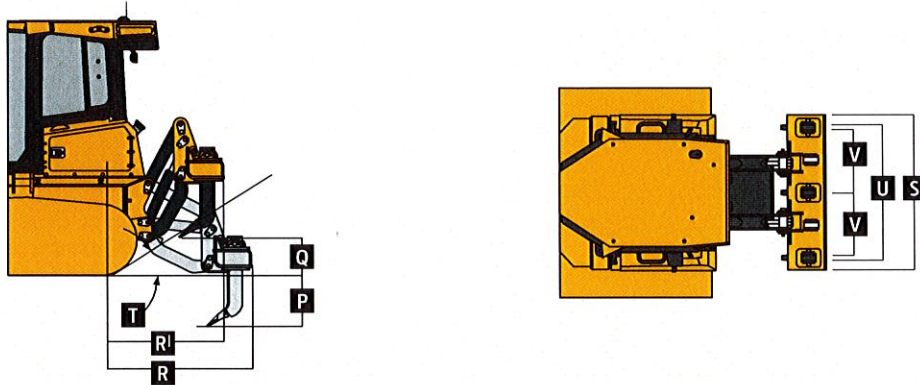
R<sup>l</sup> Overall Length, Raised Position 1210 mm (48 in.) (4 ft. 0 in.)

S Overall Beam Width 1930 mm (76 in.) (6 ft. 4 in.)

T Slope Angle (full raise) 26 deg.

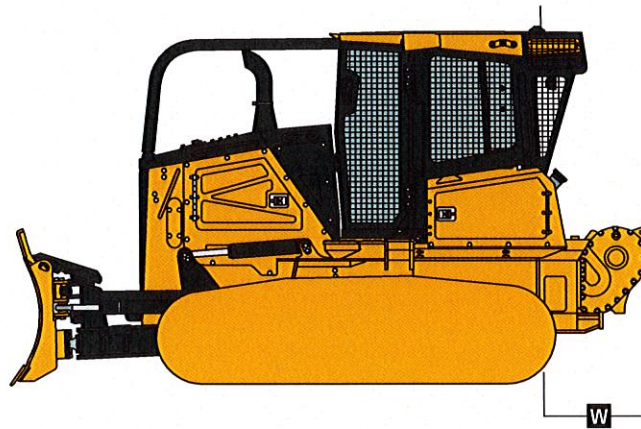
U Ripping Width 1673 mm (66 in.) (5 ft. 6 in.)

V Distance Between Shanks 806 mm (32 in.)



**4000S Winch** 700L XLT / 700L LGP

W Winch Length 798 mm (31 in.)



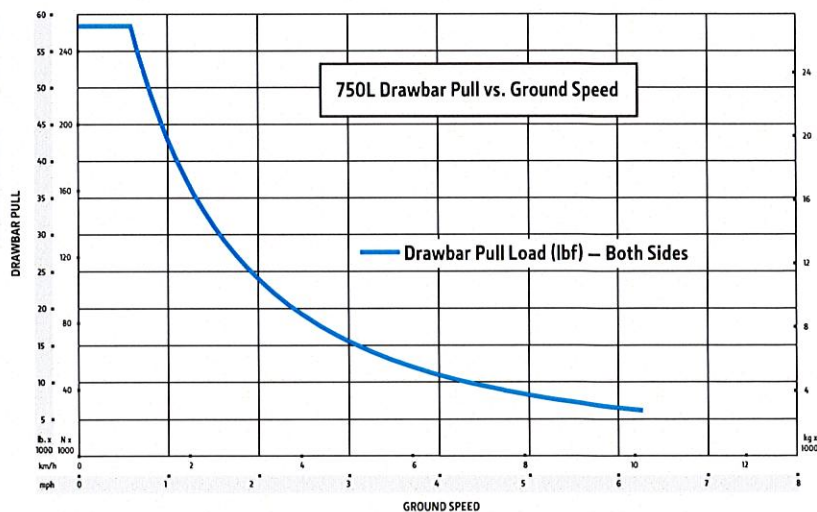




# 750L SPECIFICATIONS

While general information, pictures, and descriptions are provided, some illustrations and text may include product options and accessories NOT AVAILABLE in all regions, and in some countries products and accessories may require modifications or additions to ensure compliance with the local regulations of those countries.

Engine	750L XLT / 750L LGP	750L
<b>Blade Type</b>	<b>Power-Angle-Tilt (PAT)</b>	<b>Outside Dozer (OSD)</b>
Manufacturer and Model	John Deere PowerTech™ PVS 6068	John Deere PowerTech PVS 6068
Non-Road Emission Standard	EPA Final Tier 4/EU Stage V	EPA Final Tier 4/EU Stage V
Displacement	6.8L (414 cu. in.)	6.8L (414 cu. in.)
SAE Net Rated Power	131 kW (175 hp) at 1,700 rpm	131 kW (175 hp) at 1,700 rpm
Aspiration	Turbocharged with charge-air cooler	Turbocharged with charge-air cooler
Air Cleaner	Vacuum-aspirated dual-element dry canister	Vacuum-aspirated dual-element dry canister
Cooling	750L XLT / 750L LGP / 750L	
Type	Variable-speed suction fan with automatic reversing	
Engine Coolant Rating	-37 deg. C. (-34 deg. F)	
Engine Radiator	10 fins per in.	
Powertrain	750L XLT / 750L LGP / 750L	
<b>Transmission</b>	Automatic, dual-path, hydrostatic (HST) drive; load-sensing feature automatically adjusts speed and power to match changing load conditions; each individually controlled track is powered by a variable-displacement piston pump and motor combination; ground-speed selection buttons on single-lever steering and direction control; reverse speed ratio is fully operator customizable; decelerator pedal provides infinite speed control from full speed to complete stop	
System Relief Pressure	47 574 kPa (6,900 psi)	
<b>Travel Speeds</b>		
Forward and Reverse	9.7 km/h (6.0 mph)	
Maximum (optional)	11.0 km/h (6.8 mph)	
<b>Steering</b>	Single-lever steering, speed, direction control, and counter-rotation; full power turns and infinitely variable track speeds provide unlimited maneuverability and optimum control; HST steering eliminates steering clutches and brakes	
<b>Final Drives</b>	Double-reduction, planetary final drives mounted independently of track frames and dozer push frames for isolation from shock loads	
Total Ratio	46.41 to 1	
<b>Drawbar Pull</b>		
Maximum	259 kN (58,250 lb.)	
At 1.9 km/h (1.2 mph)	167 kN (37,500 lb.)	
At 3.2 km/h (2.0 mph)	106 kN (23,750 lb.)	
<b>Brakes</b>		
Service	HST (dynamic) braking stops the machine whenever the direction-control lever is moved to neutral or the decelerator is depressed to the detent	
Parking	Exclusive safety feature engages wet, multiple-disc brakes whenever the engine stops, the decelerator is depressed to the end of travel, or motion is detected while the transmission control is in neutral; machine cannot be driven with brake applied, minimizing wearout; spring applied, hydraulic release	
Hydraulics	750L XLT / 750L LGP	750L
Type	Open-center load-sense hydraulic system with variable-displacement piston pump	63 cc
Pump Displacement	63 cc	24 993 kPa (3,625 psi)
System Relief Pressure	24 993 kPa (3,625 psi)	1896 kPa (275 psi)
Differential Pressure	1896 kPa (275 psi)	130 L/m (34 gpm)
Maximum Flow at Unloaded High Idle	130 L/m (34 gpm)	2-function EH joystick
Control	3-function electrohydraulic (EH) joystick with proportional roller-angle function	
Electrical	750L XLT / 750L LGP / 750L	
Voltage	24 volts	
Capacity	950 CCA	
Battery	175 min.	
Reserve		





# 750L SPECIFICATIONS



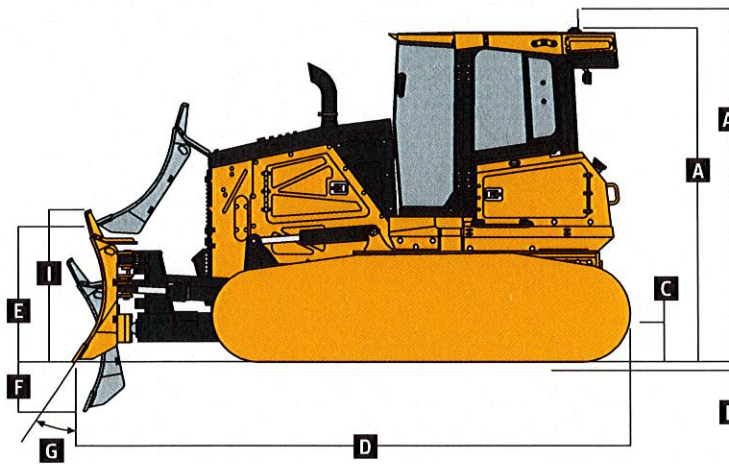
While general information, pictures, and descriptions are provided, some illustrations and text may include product options and accessories NOT AVAILABLE in all regions, and in some countries products and accessories may require modifications or additions to ensure compliance with the local regulations of those countries.

Electrical (continued)		750L XLT / 750L LGP / 750L			
Alternator Rating					
Cab	145 amp				
Canopy	110 amp				
Lights					
Halogen	Cab-mounted front (2), cab-mounted rear (2), and engine compartment (1)				
Premium LED	Cab-mounted front (4), cab-mounted rear (2), and engine compartment (1)				
Undercarriage	750L XLT	750L LGP		750L	
Blade Type	PAT	PAT		OSD	
Tracks	Track frame with front and rear track guides and sprocket guard; John Deere undercarriage features deep heat-treated, sealed, and lubricated track links and through-hardened, sealed, and lubricated rollers for maximum wear resistance; sprockets are segmented; extreme-duty shoes are available (on some models) for severe applications				
Track Gauge	1880 mm (74 in.)	2134 mm (84 in.)	2134 mm (84 in.)	1880 mm (74 in.)	
Grouser Width	559 mm (22 in.)	860 mm (34 in.)	860 mm (34 in.)	610 mm (24 in.)	
Chain	Sealed and lubricated	Sealed and lubricated		Sealed and lubricated	
Shoes, Each Side	45	45	45	40	
Track Rollers, Each Side	8	8	8	7	
Track Length on Ground	3093 mm (122 in.)	3093 mm (122 in.)	3093 mm (122 in.)	2604 mm (103 in.)	
Ground Contact Area	38 232 cm² (5,926 sq. in.)	58 373 cm² (9,048 sq. in.)		35 677 cm² (5,530 sq in.)	
Ground Pressure	43.7 kPa (6.34 psi)	30.5 kPa (4.42 psi)	30.5 kPa (4.43 psi)	47.8 kPa (6.93 psi)	
Track Pitch	191 mm (7.5 in.)	191 mm (7.5 in.)	191 mm (7.5 in.)	191 mm (7.5 in.)	
Oscillation at Front Roller	±135 mm (±5.3 in.)	±127 mm (±5.0 in.)	±127 mm (±5.0 in.)	±110 mm (±4.3 in.)	
Operator Station	750L XLT / 750L LGP / 750L				
ROPS (ISO 3471 – 2008) and FOPS (ISO 3449 – 2005) Level II					
Serviceability					
Refill Capacities					
Fuel Tank With Lockable Cap	370 L (97.7 gal.)				
Cooling System With Recovery Tank	31.4 L (8.3 gal.)				
Engine Oil With Filter	28 L (7.4 gal.)				
Reservoir With Filter					
Transmission	57 L (15.1 gal.)				
Hydraulic	98 L (25.9 gal.)				
Diesel Exhaust Fluid (DEF) Reservoir	14.2 L (3.8 gal.)				
Operating Weights	750L XLT	750L LGP		750L	
Base Weight (with standard equipment, rollover protective structure [ROPS], full fuel tank, and 79-kg [175 lb.] operator)	17 041 kg (37,569 lb.)	18 133 kg (39,976 lb.)	18 162 kg (40,040 lb.)	17 386 kg (38,330 lb.)	
Optional Components					
Cab With Pressurizer and Heater/Air Conditioner	230 kg (507 lb.)	230 kg (507 lb.)	230 kg (507 lb.)	230 kg (507 lb.)	
Rear Screen					
ROPS Canopy	28 kg (62 lb.)	28 kg (62 lb.)	28 kg (62 lb.)	28 kg (62 lb.)	
Cab With Air Conditioner	49 kg (108 lb.)	49 kg (108 lb.)	49 kg (108 lb.)	49 kg (108 lb.)	
Screens – Full Enclosure, Cab With Air Conditioner	219 kg (483 lb.)	219 kg (483 lb.)	219 kg (483 lb.)	219 kg (483 lb.)	
Limb Risers (ROPS canopy and cab)	186 kg (410 lb.)	186 kg (410 lb.)	186 kg (410 lb.)	186 kg (410 lb.)	
Heavy-Duty Grille	30 kg (65 lb.)	30 kg (65 lb.)	30 kg (65 lb.)	30 kg (65 lb.)	
Rear Counterweight	326 kg (720 lb.)	326 kg (720 lb.)	326 kg (720 lb.)	326 kg (720 lb.)	
Retrieval Hitch	37 kg (81 lb.)	37 kg (81 lb.)	37 kg (81 lb.)	37 kg (81 lb.)	
Drawbar, Extended Rigid	111 kg (245 lb.)	111 kg (245 lb.)	111 kg (245 lb.)	111 kg (245 lb.)	
Center Chain Guides	61 kg (135 lb.)	61 kg (135 lb.)	61 kg (135 lb.)	61 kg (135 lb.)	
Full-Length Rock Guards	221 kg (487 lb.)	221 kg (487 lb.)	221 kg (487 lb.)	178 kg (392 lb.)	
Track Shoes					
559-mm (22 in.) Moderate Duty	In base	–759 kg (–1,674 lb.)	–759 kg (–1,674 lb.)	—	
610-mm (24 in.) Moderate Duty	86 kg (190 lb.)	–673 kg (–1,484 lb.)	–673 kg (–1,484 lb.)	In base	
610-mm (24 in.) Extreme Duty	350 kg (772 lb.)	–409 kg (–902 lb.)	–409 kg (–902 lb.)	230 kg (507 lb.)	
710-mm (28 in.) Moderate Duty	—	–363 kg (–800 lb.)	–363 kg (–800 lb.)	—	
860-mm (34 in.) Moderate Duty	—	In base	In base	—	

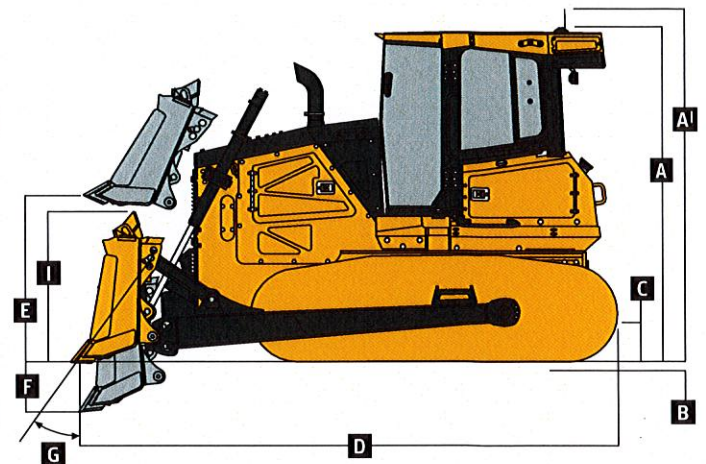


While general information, pictures, and descriptions are provided, some illustrations and text may include product options and accessories NOT AVAILABLE in all regions, and in some countries products and accessories may require modifications or additions to ensure compliance with the local regulations of those countries.

Machine Dimensions	750L XLT	750L LGP	750L
<b>Blade Type</b>	<b>Power-Angle-Tilt (PAT)</b>	<b>Power-Angle-Tilt (PAT)</b>	<b>Outside Dozer (OSD)</b>
<b>A</b> Overall Height to Roof (includes antenna base and grouser height)	3248 mm (10 ft. 8 in.)	3248 mm (10 ft. 8 in.)	3248 mm (10 ft. 8 in.)
<b>A'</b> Overall Height With Limb Risers (includes grousers)	3343 mm (11 ft. 6 in.)	3343 mm (11 ft. 6 in.)	3343 mm (11 ft. 6 in.)
<b>B</b> Tread Depth With Single-Bar Grouser			
Moderate Duty	69 mm (2.7 in.)	69 mm (2.7 in.)	69 mm (2.7 in.)
Extreme Duty	69 mm (2.7 in.)	69 mm (2.7 in.)	69 mm (2.7 in.)
<b>C</b> Ground Clearance in Dirt	358 mm (14 in.)	358 mm (14 in.)	358 mm (14 in.)
<b>D</b> Overall Length	5359 mm (211 in.) (17 ft. 7 in.)	5359 mm (211 in.) (17 ft. 7 in.)	6054 mm (238 in.) (19 ft. 10 in.)
<b>D'</b> Overall Length With Extended Drawbar	5602 mm (221 in.) (18 ft. 5 in.)	5602 mm (221 in.) (18 ft. 5 in.)	6297 mm (248 in.) (20 ft. 8 in.)
<b>E</b> Blade Lift Height	904 mm (36 in.) (3 ft. 0 in.)	904 mm (36 in.) (3 ft. 0 in.)	1035 mm (40.7 in.) (3 ft. 4.7 in.)
<b>F</b> Blade Digging Depth	648 mm (25.5 in.)	648 mm (25.5 in.)	594 mm (23.4 in.)
<b>G</b> Blade Cutting-Edge Angle, Adjustable	54.3 to 59.4 deg.	54.3 to 59.4 deg.	51.2 to 59.2 deg.



750L XLT / 750L LGP WITH POWER-ANGLE-TILT (PAT) BLADE



750L WITH OUTSIDE DOZER (OSD) BLADE

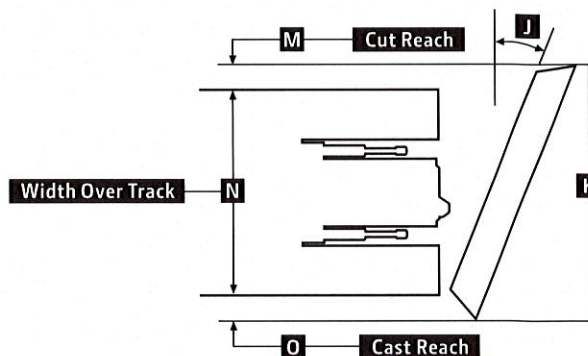
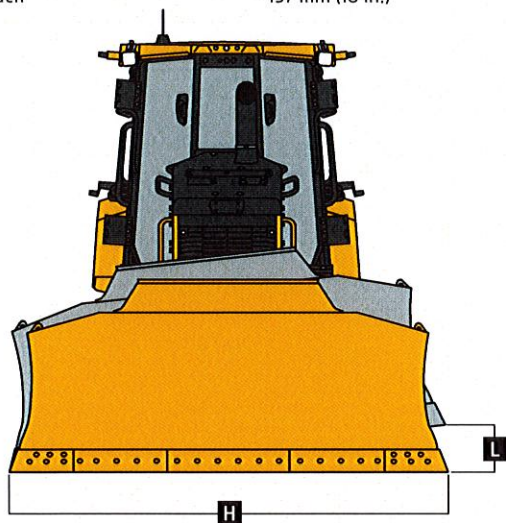
Machine Dimensions (continued)	750L XLT	750L LGP	750L
<b>Semi-U</b>			
<b>H</b> Blade Width	—	—	3265 mm (129 in.) (10 ft. 9 in.)
<b>I</b> Blade Height	—	—	1435 mm (56.5 in.) (4 ft. 8.5 in.)
SAE Capacity	—	—	4.3 m³ (5.6 cu. yd.)
Weight	—	—	1350 kg (2,976 lb.)
Push-Beam Assembly Weight (without blade)	—	—	1274 kg (2,809 lb.)
<b>L</b> Blade Tilt	—	—	681 mm (27 in.)
<b>N</b> Width Over Track	—	—	2440 mm (96 in.) (8 ft. 0 in.)



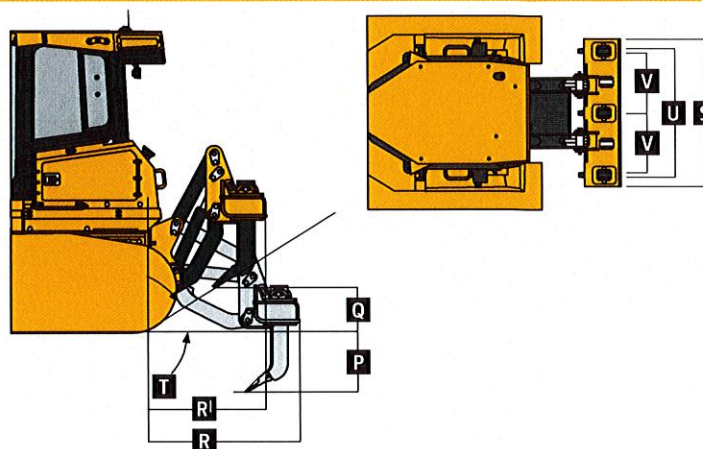
While general information, pictures, and descriptions are provided, some illustrations and text may include product options and accessories NOT AVAILABLE in all regions, and in some countries products and accessories may require modifications or additions to ensure compliance with the local regulations of those countries.

750L

Machine Dimensions (continued)	750L XLT	750L LGP	750L
Blade Type	PAT	PAT	OSD
<b>Straight</b>			
H Blade Width	3296 mm (130 in.) (10 ft. 10 in.)	3962 mm (156 in.) (13 ft. 0 in.)	4083 mm (161 in.) (13 ft. 5 in.)
I Blade Height	1444 mm (57 in.) (4 ft. 9 in.)	1427 mm (56 in.) (4 ft. 8 in.)	—
SAE Capacity	3.9 m <sup>3</sup> (5.2 cu. yd.)	4.5 m <sup>3</sup> (5.9 cu. yd.)	4.6 m <sup>3</sup> (6.0 cu. yd.)
Weight	967 kg (2,132 lb.)	1111 kg (2,449 lb.)	1140 kg (2,513 lb.)
C-Frame Assembly Weight (without blade)	1324 kg (2,926 lb.)	1324 kg (2,926 lb.)	1324 kg (2,926 lb.)
J Blade Angle	24 deg.	24 deg.	24 deg.
K Overall Width With Blade Angled	3011 mm (118.5 in.) (9 ft. 10.5 in.)	3619 mm (142.5 in.) (11 ft. 10.5 in.)	3729 mm (147 in.) (12 ft. 3 in.)
L Blade Tilt	432 mm (17 in.)	502 mm (20 in.)	518 mm (20 in.)
M Cut Reach	57 mm (2 in.)	116 mm (5 in.)	171 mm (7 in.)
N Width Over Track	2440 mm (96 in.) (8 ft. 0 in.)	2989 mm (118 in.) (9 ft. 10 in.)	—
O Cast Reach	457 mm (18 in.)	515 mm (20 in.)	571 mm (22.5 in.)



Rear Ripper	750L XLT / 750L LGP / 750L
Multi-shank (3) parallelogram ripper	
Weight	1957 kg (4,314 lb.)
P Maximum Penetration	741 mm (29 in.)
Q Maximum Clearance Under Tip	638 mm (25 in.)
R Overall Length, Lowered Position	1689 mm (67 in.) (5 ft. 7 in.)
R <sup>i</sup> Overall Length, Raised Position	1448 mm (57 in.) (4 ft. 9 in.)
S Overall Beam Width	2134 mm (84 in.) (7 ft. 0 in.)
T Slope Angle (full raise)	22 deg.
U Ripping Width	1880 mm (74 in.) (6 ft. 2 in.)
V Distance Between Shanks	902 mm (36 in.) (3 ft. 0 in.)





# Additional equipment

Key: ● Standard ▲ Optional or special

See your John Deere dealer for further information.

700L	750L	Engine	700L	750L	Powertrain	700L	750L	Hydraulic System (continued)
●	●	Meets EPA Final Tier 4/EU Stage V emissions	●	●	Dual-path HST transmission	●	●	Grade-control-ready EH hydraulics
●	●	John Deere PowerTech™ PVS 6068 6.8L engine	●	●	Reverse-speed ratios (100%, 115%, and 130% presets or operator defined)	▲	▲	SmartGrade™ ready including Slope Control system
●	●	Wet-sleeve cylinder liners	●	●	Operator-selectable decelerator function (hydrostats and engine or hydrostats only)	▲	▲	SmartGrade 3D mastless grade control including Slope Control
●	●	Eco mode	●	●	Single-lever steering with counter-rotate function	●	●	Hydrau™ All-Season Hydraulic Oil, -25 deg. C to 50 deg. C (-13 deg. F to 122 deg. F)
●	●	Exhaust stack, black	●	●	Full power turns with infinitely variable track speed	▲	▲	Hydrau™ XR Hydraulic Oil, -40 deg. C to 40 deg. C (-40 deg. F to 104 deg. F)
▲	▲	Exhaust stack, chrome	●	●	HST (dynamic) service brakes		▲	Cylinder-rod scrapers (PAT only)
●	●	Turbocharged and air-to-air aftercooled	●	●	Wet, multi-disc parking brake	●	●	Hydraulic pump, standard
●	●	Dual-element dry-canister air cleaner	●	●	Remote diagnostic test ports	▲	▲	Hydraulic pump, high flow
●	●	Engine glow-plug starting system	●	●	Automatic cold-weather transmission warmup system			Hydraulic pump for direct-drive winch
●	●	Programmable auto engine shutdown	●	●	Automatic transmission derating for exceeded system temperatures		●	Vented dedicated hydraulic reservoir and filtration system separate from transmission system
●	●	Automatic turbo cool-down timer		●	Vented dedicated transmission reservoir and filtration system separate from hydraulic system	<b>Undercarriage</b>		
●	●	Exhaust filter, under hood, with vertical stack	<b>Hydraulic System</b>			●	●	Full-length, smooth-surface track frame covers
●	●	Fuel filters with automatic electronic priming			Electrohydraulic (EH) system with fixed-displacement hydraulic gear pump	●	●	Double-flange rollers
▲	▲	Severe-duty fuel filter	●	●	Load-sense EH system with variable-displacement piston pump	●	●	Oscillating undercarriage
▲	▲	Engine coolant heater, 120 volt			3-spool EH control valve for Power-Angle-Tilt (PAT)	●	●	Maximum Life undercarriage system
●	●	110-amp alternator (canopy)	●	●	3-spool EH control valve for Outside Dozer (OSD) with single auxiliary	▲	●	Heavy-duty sealed and lubricated undercarriage
●	●	145-amp alternator (cab)			4-spool EH control valve for PAT with single auxiliary	▲	▲	Extended Life undercarriage with SC-2™ bushings
<b>Cooling</b>			▲	▲		▲	▲	Full-length rock guards
●	●	Hydraulically driven cooling fan, variable-speed suction type						
●	●	Engine cooling rated -37 deg. C (-34 deg. F)						
▲	●	Automatic, programmable reversing fan						
●	●	Engine radiator, hydrostatic (HST) cooler, and hydraulic cooler, 10 fins per inch						
●	●	Enclosed safety fan guard (conforms to SAE J1308 and ISO 3457)						
●	●	Single-plane non-stacked cooler design						

While general information, pictures, and descriptions are provided, some illustrations and text may include product options and accessories NOT AVAILABLE in all regions, and in some countries products and accessories may require modifications or additions to ensure compliance with the local regulations of those countries.

Net engine power is with standard equipment including air cleaner, exhaust system, alternator, and cooling fan at test conditions specified per ISO9249. No derating is required up to 3050-m (10,000 ft.) altitude. Also available: winches, fair-leads, log arches, skidding grapples, trash packages, landfill protection packages, cable plows, side booms, field-installed cab for canopy, canopy heater, and fire-suppression systems. Specifications and design subject to change without notice. Wherever applicable, specifications are in accordance with SAE standards. Except where otherwise noted, these specifications are based on units with ROPS, full fuel tanks, and 79-kg (175 lb.) operators. Operator station ROPS and FOPS certified.



# Additional equipment *(continued)*

Key: ● Standard ▲ Optional or special

See your John Deere dealer for further information.

700L	750L	Operator's Station	700L	750L	Operator's Station <i>(continued)</i>	700L	750L	Attachments
▲	▲	Canopy cab with under-seat heater	●	●	Retractable seat belt, 76 mm (3 in.) (conforms to SAE J368)	▲	▲	Rear ripper, parallelogram
▲	▲	Enclosed cab with air/heat	▲	▲	Fire extinguisher mounting bracket	▲		Counterweight, front, 144 kg (317 lb.)
▲	▲	Automatic temperature control (ATC) system	▲	▲	External-mounted rear-attachment mirror (cab)	▲	▲	Single rear counterweight
●	●	Standard seat, vinyl with heavy-duty air suspension (canopy)	▲	▲	Rear wiper and washer (cab)	▲	▲	Retrieval hitch with pin
●	●	Deluxe seat, cloth with heavy-duty air-suspension (cab)	<b>Overall Vehicle</b>			▲	▲	Retrieval hitch with 1 counterweight
▲	▲	Premium seat, leather-accented, heated and ventilated, with heavy-duty air-suspension (cab)	●	●	Environmental drain package	▲	▲	Extended rigid drawbar
●	●	Under-seat heater (canopy)	▲	▲	Fluid-sample ports	▲	▲	Extended rigid drawbar with 1 counterweight
●	●	AM/FM/Weather-Band (WB) radio with front auxiliary (cab)	●	●	JDLink™ wireless machine communication system (available in specific countries; see your local dealer for details)	▲		Winch, John Deere 4000S, power in/free spool out OR power out 4-roller fairlead for winch
▲	▲	Premium radio with Bluetooth®, AM/FM/WB radio, remote auxiliary, and remote USB port (cab)	▲	▲	Quick service ports (HST, hydraulic, and engine oil, and coolant)	▲	▲	Threaded pitch jack (OSD only)
●	●	Multifunction/multi-language 178-mm (7 in.) color LCD monitor: Tachometer, hour meter, transmission direction and speed (forward/reverse), exhaust filter status, ambient temperature, and clock	●	●	Halogen lights: cab-mounted front (2) and cab-mounted rear (2)	<b>XLT LGP 700L Shoes</b>		
●	●	Built-in diagnostics: Diagnostic-code details / Sensor values / Calibrations / Individual circuit tester	▲	▲	Premium LED lights: cab-mounted front (4) and cab-mounted rear (2)	●	▲	559-mm (22 in.) moderate service
●	●	Backup alarm	▲	●	Engine-compartment light	▲	▲	610-mm (24 in.) moderate service
▲	▲	Rearview camera	▲	▲	Beacon light	●	▲	760-mm (30 in.) moderate service
●	●	12-volt accessory plug (1)	▲	▲	Trimble-ready interface package	<b>STD XLT LGP 750L Shoes</b>		
▲	▲	Additional 12-volt accessory plug	▲	▲	Leica-ready interface package	●	▲	559-mm (22 in.) moderate service
●	●	Keyless start with multiple security codes	▲	▲	Heavy-duty grille	▲	▲	610-mm (24 in.) moderate service with clipped corners
			▲	▲	Final-drive trash guards (waste applications)	▲	▲	610-mm (24 in.) extreme service with clipped corners
			▲	▲	Full screens for cab		▲	710-mm (28 in.) moderate service
			▲	▲	Rear window screen		●	860-mm (34 in.) moderate service with clipped corners
			▲	▲	Large debris prescreen			
			●	●	Forestry limb risers (sweeps)			
					Lockable master electrical disconnect switch			

While general information, pictures, and descriptions are provided, some illustrations and text may include product options and accessories NOT AVAILABLE in all regions, and in some countries products and accessories may require modifications or additions to ensure compliance with the local regulations of those countries.

Net engine power is with standard equipment including air cleaner, exhaust system, alternator, and cooling fan at test conditions specified per ISO9249. No derating is required up to 3050-m (10,000 ft.) altitude. Also available: winches, fair-leads, log arches, skidding grapples, trash packages, landfill protection packages, cable plows, side booms, field-installed cab for canopy, canopy heater, and fire-suppression systems. Specifications and design subject to change without notice. Wherever applicable, specifications are in accordance with SAE standards. Except where otherwise noted, these specifications are based on units with ROPS, full fuel tanks, and 79-kg (175 lb.) operators. Operator station ROPS and FOPS certified.



