

**BID SUBMITTAL FORM**  
***Alabama County Joint Bidding Program***  
**BID ITEM – 125 HP HYDROSTATIC BULLDOZER – OPTION B**

Company Name: THOMPSON TRACTOR COMPANY

Address: P.O. BOX 10367  
BIRMINGHAM, AL 35202-0367

Bid Submitted by: JAY SMITH  
(Name of company representative)

Title: SALES OPERATIONS MANAGER E-mail address: JAYSMITH@THOMPSONTRACTOR.COM

Phone: (205) 849-4242 Fax: (205) 849-4394

By submitting this bid, we agree:

Initials

The equipment model number identified below meets the bid specs for this bid item.

JAS

That the bid price will be honored for all counties for the period from Jan. 1, 2021 to Dec. 31, 2021.

JAS

The equipment will be delivered at the bid price to all counties participating in the joint bid program.

JAS

The company representative listed above will be the contact person for purchasing this bid item under the joint bid program.

JAS

The bid is accompanied by a current catalog or model specification document for the model number identified below.

JAS

The bid is accompanied by a copy of the manufacturer's standard warranty as required in the bid specifications.

JAS

The bid includes the e-verify documentation required by Alabama law.

JAS

If awarded the bid, a performance bond will be provided upon request.

JAS

The bid documents include the **Manufacturer's Suggested Retail Price Sheet (MSRP) for the Standard Machine.**

JAS

## 125 HP HYDROSTATIC BULLDOZER – OPTION B

Total Bid Price for Standard Machine: \$ 186,581

(Total Bid Price for Standard Machine Includes Freight Preparation, Delivery and Standard Warranty Costs)\*

Freight Preparation and Delivery: \$ 5,696

(Included in Standard Machine Bid Price)

Manufacturer's Suggested Retail Price for Standard Machine: \$ 249,152

Equipment Model #: CATERPILLAR D4 LGP

Description: TRACK TYPE TRACTOR

Signature of company representative submitting bid: \_\_\_\_\_



Title: SALES OPERATIONS MANAGER

\* **NOTE:** Award will be made based on the total cost of the **Standard Machine**. The total cost of the standard machine is to include the freight preparation, delivery and standard warranty cost. Freight preparation, delivery will be excluded from the total bid price of the standard machine in determining the percentage discount for any available options.

**BID SUBMITTAL FORM: OPTION COST SHEET  
125 HP HYDROSTATIC BULLDOZER – OPTION B**

By submitting this bid, we agree:

To offer any available options at the percent difference between the Manufacturer's Suggested Retail Price Sheet and the actual bid price on the Standard Machine\*

DA

The bid documents include the Manufacturer's Suggested Retail Price Sheet (MSRP) with **any available Options** for the Standard Machine

DA

Equipment Model #: CATERPILLAR D4 LGP

Description: TRACK TYPE TRACTOR

Signature of company representative submitting bid: \_\_\_\_\_



Title: SALES OPERATIONS MANAGER

**\*Note:** The percent difference between the **Manufacturer's Suggested Retail Price Sheet (MSRP)** for the standard machine as specified by these **Bid Specifications** and the actual price bid by the vendor will be calculated to determine the percentage discount to be applied to any available options. The bid price of the freight preparation, delivery cost shall be excluded in determining the percentage discount to be applied to available options. Any individual county may choose to add any available option to the standard machine at the percentage discount at the time of purchase.

D4 LGP	125 HP HYDROSTATIC BULLDOZER OPTION B	2020 Pricing
590-7197	D4 LGP TRACTOR	\$236,896
465-0450	REGIONAL PACKAGE	\$0
554-3642	STANDARD AIR CLEANER	\$0
431-7080	HEAVY DUTY ROLLERFRAME	\$0
379-3983	30" HEAVY DUTY LGP TRACK, EXTREME SERVICE	\$1,434
368-9744	CENTER TRACK GUIDING GUARD	\$1,020
525-6315	STANDARD HYDRAULIC OIL	\$0
535-7529	NO REAR HYDRAULIC PACKAGE	\$0
583-3941	MANUAL BLADE PITCH	\$0
465-5604	STANDARD STARTER	\$0
536-9447	6 HALOGEN LIGHTS	\$0
538-7156	REAR VISION CAMERA	\$0
538-8775	STANDARD CAB PACKAGE	\$0
537-6072	ARO W/ ASSIST CONTROL	\$0
573-4529	CELLULAR PRODUCT LINK PLE742	\$0
425-7127	STANDARD FUEL TANK	\$0
424-7002	DEMAND FAN	\$0
543-3285	FRONT PROTECTION PACKAGE	\$581
	Includes: Heavy Duty Radiator Grill, and Crankcase Guard	\$0
246-8384	DRAWBAR	\$0
348-6280	145" ACCUGRADE READY LGP BLADE	\$8,656
495-1449	AM/FM/USB/BLEETOOTH RADIO	\$566
0P-0996	ENGLISH MANUAL	\$0
0P-3940	CYLINDER ROD PROTECTION	\$0
0P-1939	WINDSHIELD WASHER	\$0
0P-3978	FUEL ANTIFREEZE	\$0
	<b>TOTAL BID PRICE FOR STANDARD MACHINE</b>	<b>\$186,581</b>
	<b>FREIGHT PREPARATION AND DELIVERY</b>	<b>\$5,696</b>
	<b>TOTAL MANUFACTURER'S SUGGESTED RETAIL PRICE FOR STANDARD MACHINE</b>	<b>\$249,152</b>



# **BID SPECIFICATIONS FOR 125 HP HYDROSTATIC BULLDOZER – OPTION B**

## **GENERAL**

These specifications shall be construed as the minimum acceptable standards for a 125 hp hydrostatic bulldozer. Should the manufacturer's current published data or specifications exceed these standards, the manufacturer's standards shall be considered minimum and shall be furnished. All integral parts not specifically mentioned in the scope of these specifications that are necessary to provide a complete working unit shall be furnished. Additionally, the machine offered for bid shall include all standard manufacturer's equipment. The bulldozers must be a new current production model and shall meet all EPA and other applicable standards at the time of manufacture.

The use of specific names and numbers in the specifications is not intended to restrict the bidder or any seller or manufacturer, but is intended solely for the purpose of indicating the type, size and quality of equipment considered best adapted to the uses of counties participating in this joint bid.

## **BID SUBMITTAL FORM**

Each bidder must submit his or her bid on the Bid Submittal Form included in the invitation to bid package. All written warranties to be submitted shall be attached to the Bid Submittal Form.

## **BID PRICE**

The price bid shall include all destination charges, delivery charges, title fees, rebates, and all other applicable costs and refunds.

## **MANUALS**

Each unit shall be provided with one (1) copy of the operator's manual and one (1) copy of the current parts manual. Units will not be accepted for delivery until the manuals as outlined above are received by the purchaser.

## **REPLACEMENT PARTS AVAILABILITY**

Parts must be available for 5 years or 7,500 hours of use for the piece of equipment bid. If replacement parts are not delivered within three (3) working days of an order being placed, the bidder will deliver an equivalent machine for the county to use at no cost to the county until such time as the parts are delivered to the county so it can affect repairs to its machine.

## **WARRANTY**

Bidders shall submit a copy of the manufacturer's standard warranty. Warranty shall include service response time of maximum of 36 hours within notification by county.

Yes ☒ No ☐  
Page# \_\_\_\_\_  
or  
Attachment ☒

**ENGINE**

Shall be a turbocharged diesel engine with a displacement of not less than **260 cubic inches**, capable of developing a minimum of **125 net** flywheel horsepower (SAE J1349).

Yes ☒ No ☐  
Page # 1, 10

Engine shall be manufactured by the equipment manufacturer.

Yes ☒ No ☐  
Page # 1, 10

**WEIGHT**

Operating weight with blade, operator, full fuel tank, and ROPS canopy shall not be less than **30,500 lbs.**

Yes ☒ No ☐  
Page # 10

**ELECTRICAL SYSTEM**

Shall be equipped with a minimum **100-amp** alternator.

Yes ☒ No ☐  
Page # 14

**TRANSMISSION**

Shall be equipped with a hydrostatic type transmission.

Yes ☒ No ☐  
Page # 14

**STEERING**

All steering functions must be able to be performed using one hand only.

Yes ☒ No ☐  
Page # 4

**UNDERCARRIAGE**

The tractor shall be equipped with sealed and lubricated tracks. Minimum shoe width shall be **30 inches**. Track sag shall be hydraulically adjusted.

Yes ☒ No ☐  
Page # 10, 14

Ground bearing pressure shall not exceed **4.5 lbs/sq. inch.**

Yes ☒ No ☐  
Page # 10

**BLADE**

The machine shall be equipped with a six-way (pat) blade with a minimum capacity of **4.8 cubic yards.**

Yes ☒ No ☐  
Page # 11

**VANDALISM PROTECTION**

Machine shall be equipped with all standard and optional factory vandalism protection available for the machine bid.

Yes ☒ No ☐  
Page # 14

### SAFETY EQUIPMENT

Gauges and indicators shall be provided to monitor critical (fuel level, coolant temperature, powertrain oil temperature, and hydraulic oil temperature) operational systems of the machine and alert the operator when potential problems occur.

Yes X No       
Page # 14

Rear view mirror; backup alarm.

Yes X No       
Page # 14

Heavy duty hinged radiator guard

Yes X No       
Page # 14

Crankcase guard

Yes X No       
Page # 14

Track center guiding guard

Yes X No       
Page # 15

Pre-cleaner guard

Under Hood

Yes X No       
Page # 14

Front tow hooks

Yes X No       
Page # 14

Heavy duty rear drawbar

Yes X No       
Page # 14, 15

Fire extinguisher

Yes X No       
Page # Vendor Purchase

Water separator

Yes X No       
Page # 14



# Phase-In / Phase-Out Plan

Worldwide  
February 2020

## Nomenclature Change for D6K (Phase Out) to D4 (Phase In)

Caterpillar is pleased to announce the phase-in of the D4 product to replace the current D6K. This is only a nomenclature change and the product and price have no change.

This nomenclature change aligns with Dozer nomenclature announcement by Caterpillar Global Brand Management that was communicated previously. With this change, we are simplifying the nomenclature and making it easier for Dealers to forecast the product.

The tables below show the details of the old and new sales models with timeline and source. This change will be reflected in relevant systems like BIC, DPA, Dealer Order Planning, Financial and Insurance systems.

### D6K Phase-Out Schedule

Forecasting Sales Model	Prefix	Facility	Final Orders	Final Ship Date
D6KLGP	EL7, ZIJ	Piracicaba, Brazil	Mar 2020	Jun 2020
D6KXL	MGM, MP7			
D6KLGP	JTR	Grenoble		
D6KXL	DFR			

### D4 Phase-In Schedule

Forecasting Sales Model	Prefix	Facility	Order Board Open	First Ship Date
D4-15VP	AX9, FRP	Grenoble	Apr 2020	Jul 2020
	RKR, JPH, K3G, H3C	Piracicaba, Brazil		

First D4-15VP order range collaboration will start in February 2020 for order placement within the range in April 2020. Lane 2 orders can be placed for D4-15VP starting upcoming BOM cycle with order placement in May 2020. Please update your forecast and inventory plans for the new sales model to achieve better alignment across our processes and systems.

We look forward to partnering with you to execute a successful nomenclature change of this machine. Please share this information immediately with your respective operational groups.

Adrian Grigorita  
Market Manager  
Medium Tractor Product

The information contained herein is intended for circulation only to Caterpillar and dealer employees whose duties require knowledge of such reports and is intended exclusively for their information and training. © 2020 All rights reserved. CAT, CATERPILLAR, LET'S DO THE WORK, their respective logos, "Caterpillar Yellow", the "Power Edge" and Cat "Modern Hex" trade dress as well as corporate and product identity used herein, are trademarks of Caterpillar and may not be used without permission.





# A SIMPLIFIED WAY TO COUNT ON WORLD-CLASS PERFORMANCE.

CAT DOZERS. THE NAMES ARE CHANGING. THE PERFORMANCE BEHIND THEM NEVER WILL.



D1	D2	D3	D4	D5	D6	D7	D8	D9	D10	D11
75 hp +	85 hp +	100 hp +	125 hp +	160 hp +	200 hp +	240 hp +	320 hp +	405 hp +	600 hp +	850 hp +
D3K2 D3K	D4K2 D4K	D5K2 D5K	D6K2 D6K	D6N D5R2	D6T D6R2	D7E D7R	D8T D8R	D9T D9R	D10T2	D11T

Caterpillar is changing the nomenclature on some of our most popular machines. As a technology leader, we are constantly updating our product lines with new innovative features designed to help you be more productive and efficient. Some of the most noticeable model designation changes will take place across the dozer line. Check out our all new lineup.

## Small Dozers:

D1 = D3K, D3K2  
D2 = D4K, D4K2  
D3 = D5K, D5K2

## Medium Dozers:

D4 = D6K, D6K2  
D5 = D5R2, D6N  
D6 = D6R2, D6T  
D7 = D7E, D7R

## Large Dozers:

D8 = D8R, D8T  
D9 = D9R, D9T  
D10 = D10T2  
D11 = D11T

For more information on the products carried by Thompson Tractor, visit: [thompsontractor.com/machines/new](http://thompsontractor.com/machines/new)

**Thompson** **CAT**

**What it takes.**



# D6K2

## Track-Type Tractor



### Engine

Engine Model	Cat® C4.4 ACERT™ with twin turbo	
Emissions	U.S. EPA Tier 4 Final/ EU Stage IV/ Korea Tier 4	
Engine Power (Maximum)	SAE J1995	160 hp
	ISO 14396	157 hp
	ISO 14396 (DIN)	159 hp

### Engine (continued)

Net Power (Rated)			
SAE J1349		95 kW	128 hp
ISO 9249		97 kW	130 hp
ISO 9249 (DIN)			132 hp

### Weight

Operating Weight			
XL		13 271 kg	29,258 lb
LGP		13 909 kg	30,664 lb



## D6K2 Features

### Cat Connect Technologies

*Standard Cat Slope Indicate, Cat Stable Blade and Cat GRADE with Slope Assist help you get jobs done faster and more accurately. Optional GRADE technologies, like Cat Grade with 3D and Cat AccuGrade™, allow you to choose features that match your job site needs for scalability, capability and budget.*

### Power and Efficiency

*A Cat C4.4 ACERT engine with twin turbochargers and new hydrostatic transmission to give you improved fuel efficiency and the most power-dense drive train in its size class. Eco Modes optimize engine speed, while maintaining ground speed, saving up to 17 percent fuel in lighter blade load applications like finish grading.*

### Optimized for Grading

*The D6K2 features a new equalizer bar design, stiffer track roller frame and an undercarriage designed for a smooth ride. This helps you make the most of top grading speeds and integrated technology for optimal productivity in fine grading applications.*



## Contents

Power and Efficiency .....	3
Operator Station.....	4
Ease of Operation.....	5
Emissions Technology.....	5
Integrated Technologies.....	6
Equipped for the Job .....	8
Serviceability and Customer Support.....	9
Specifications.....	10
Standard Equipment.....	14
Optional Equipment.....	15

The new D6K2 dozer is smarter and more efficient than ever. It comes equipped with standard Grade technologies like Slope Assist to make it easier for even less experienced operators to get more quality work done in less time. But intelligence is only part of the package – Eco Modes and a new power train deliver up to 17 percent more fuel efficiency, while providing superior maneuverability, faster steering response and greater capability to utilize full blade loads. This dozer also retains its optimal balance and undercarriage design for outstanding performance in finish grading applications. The D6K2 meets Tier 4 Final/Stage IV/Korea Tier 4 emission standards.





# Power and Efficiency

## Designed for performance

### Powerful Drive Train

A Cat C4.4 ACERT engine with twin turbochargers is combined with a new hydrostatic transmission to give you improved fuel efficiency and the most power-dense drive train in its size class. The hystat transmission offers superior maneuverability, faster steering response and greater capability to utilize full blade loads.

### Eco Modes

Eco Modes optimize engine speed, while maintaining ground speed, saving up to 17 percent fuel in lighter blade load applications like finish grading.

### Reduced Idling

Efficiency features reduce engine speed when idling, or shut the machine down after a specified time, to further save fuel and meet idling regulations. Engine Idle Shutdown shuts down engine after pre-set time to reduce idling and help save fuel.

### Traction Control

New automatic traction control is standard and automatically reduces track slip in poor underfoot conditions, improving productivity and finish surface quality.

### Effective Cooling

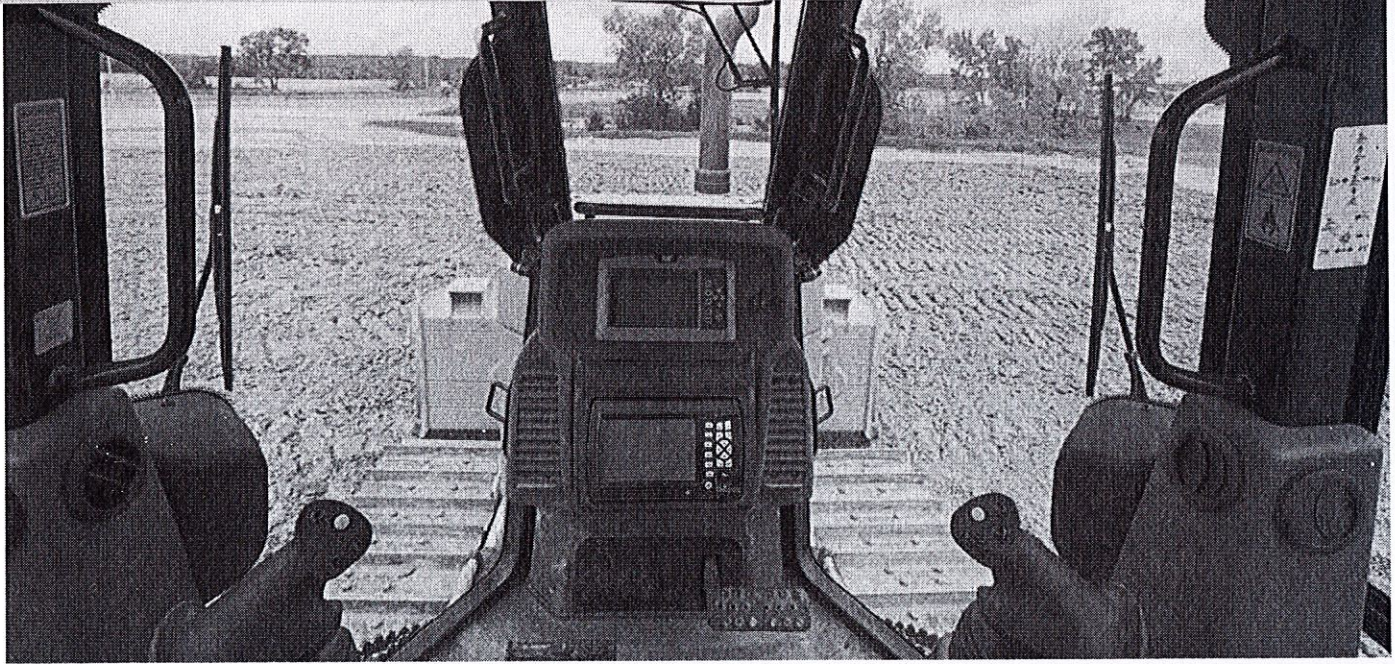
Updated cooling package allows more air flow, reducing fan speed for greater efficiency. Hydraulic demand fan automatically reduces fan speed in cooler conditions to help save fuel. An optional hydraulic reversing fan offers automatic or manual modes for changing direction to blow debris out of the radiator cores.





# Operator Station

## Comfort and Productivity

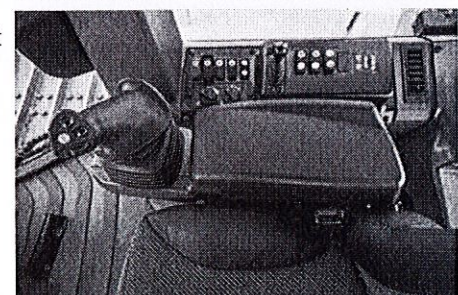
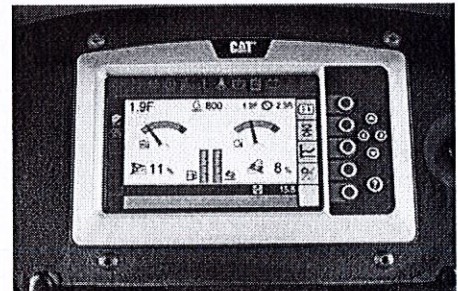


Spacious, quiet cab offers all-day comfort with wide door openings and an air suspension seat. Ergonomic, seat-mounted joystick controls isolate vibration. Excellent visibility to the blade, curbs and tight spaces help you work more precisely.

The new Liquid Crystal Display (LCD) is easy to read, enables Slope Assist, and is rear-camera ready so no additional monitor is needed.

### Implement and Steering Controls

- Single joystick for speed, direction and steering; includes thumb wheel for speed adjustment and traction control.
- Dozer/implement controls give you 6-way control of the VPAT blade and allows power pitch adjustment. Blade shake feature helps shed sticky material.
- Improved implement valve provides faster response. Intuitive, precise electro-hydraulic controls with sensitivity adjustment – fine, medium, coarse.
- Rear vision camera (O) for enhanced visibility behind the machine.
- Improved heating/ventilation/air conditioning system cools faster; circulates air closer to the operator for more comfort.
- New bi-directional control (S) – dial preselected forward/reverse gears for reduced effort and improved efficiency. Save the settings as operator profile for even more convenience.
- Added comfort options like heated/ventilated seat and heated control handles.





## Ease of Operation

Intuitive and precise

Whether the D6K2 is a permanent part of your fleet or rented for the short term, operators will find this machine easy to operate.

- Technologies like Slope Assist and Stable Blade are integrated right into the dozer to help even less experienced operators achieve a quality grade more quickly, and with fewer inputs.
- Joystick controls are intuitive and precise.
- Machine balance and undercarriage are designed for faster finish grading.
- A rear vision camera is available to enhance visibility behind the machine.
- Machine width and folding blade option allow for easy transport.



## Emissions Technology

Proven, integrated solutions



- Meets Tier 4 Final/Stage IV/Korea Tier 4 emission standards.
- Emissions technology that is transparent – no action required from the operator, no stopping for regeneration.
- Diesel Exhaust Fluid (DEF) use typically about 2.5 percent of fuel consumption – provides excellent overall fluid efficiency.
- Diesel Particulate Filter designed for the life of the engine – no need to clean out.
- Pump automatically purges DEF lines to help prevent freezing.
- When refilling Diesel Exhaust Fluid, a tone will sound (with key on) when tank is nearly full.



# Integrated Technologies

Monitor, manage and enhance job site operations



## GRADE for Dozers

Cat Connect GRADE technologies help you hit target grade faster and more accurately. Finish jobs in fewer passes, and with less operator effort, saving you time and helping you increase profit.

**Cat GRADE with Slope Assist (■)** helps operators more easily achieve the required main-fall and slope orientation of the blade by automatically maintaining pre-established blade angles for the grade. The system saves time, increases finish quality and reduces operator input. Experienced operators can work more productively and less experienced operators can achieve better quality results more quickly.

**Cat Slope Indicate (■)** displays machine cross-slope and fore/aft orientation on the primary monitor, helping operators work more accurately on slopes.

**Cat Stable Blade (■)** complements the operator's blade-control input for attaining finish grades quicker with less effort.

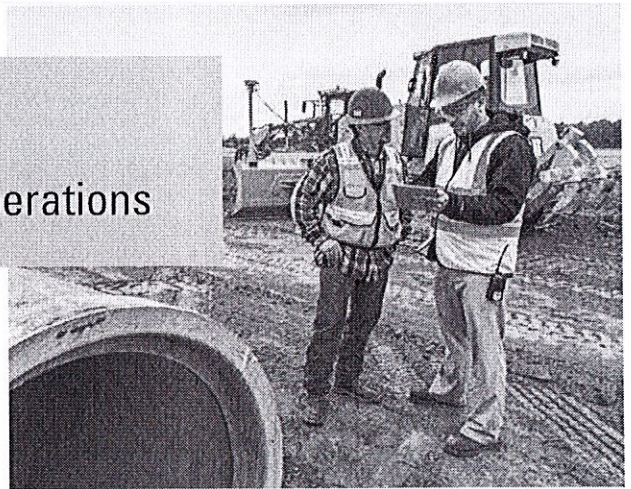
**Cat GRADE with 3D (●)** – available early 2017) is a factory integrated grade control system that enables operators to improve grading efficiency, accuracy, and productivity in both production dozing and fine-grading applications. The integrated design positions antennas on the cab roof, eliminating conventional blade-mounted masts and related cables. The AccuGrade Ready Option (ARO) is part of the package for added versatility, and AutoCarry™ is included to further boost productivity.

**Cat AccuGrade (●)** is a dealer-installed aftermarket grade-control system that provides increased grading versatility and the ability to scale capacity to changing needs, providing a choice of lasers for 2D flat-plane and slope work, Global Navigation Satellite System (GNSS) control for complex 3D cuts and contours, and/or systems using a Universal Total Station (UTS) for fine and finish grading.

**AccuGrade Ready Option (ARO) (●)** allows you to easily install or upgrade to AccuGrade 2D and 3D grade-control systems to add versatility and resale value to your machine.

(■) = Standard

(●) = Optional







### **LINK Technologies**

LINK technologies provide wireless capability to machines enabling two-way transfer of information collected by on-board sensors, control modules, and other Cat Connect technologies using off-board apps, such as our VisionLink® software.

### **Product Link™/VisionLink**

Product Link takes the guesswork out of equipment management. Track location, hours, fuel usage, productivity, idle time, and diagnostic codes through the online VisionLink interface. Manage your fleet in real time so you can maximize efficiency, improve productivity, and lower operating costs.

Cat Connect makes smart use of technology and services to improve your job site efficiency. Using the data from technology equipped machines, you'll get more information and insight into your equipment and operations than ever before.

Cat Connect services are also available from your dealership including:



**EQUIPMENT  
MANAGEMENT**

**Equipment Management** – increase uptime and reduce operating costs.



**PRODUCTIVITY**

**Productivity** – monitor production and manage job site efficiency.



**SAFETY**

**Safety** – enhance job site awareness to keep your people and equipment safe.





### Blades

- Rugged Variable Pitch Angle Tilt (VPAT) blade allows you to hydraulically adjust lift, angle and tilt for precise results.
- Wide blade helps you get more work done in less time.
- Blade shake feature for easy removal of material.
- Folding blade option helps limit transport width.
- Power pitch option lets you easily adjust blade to optimum pitch for your application using buttons on the right hand control.

## Equipped for the Job

Optimize your machine

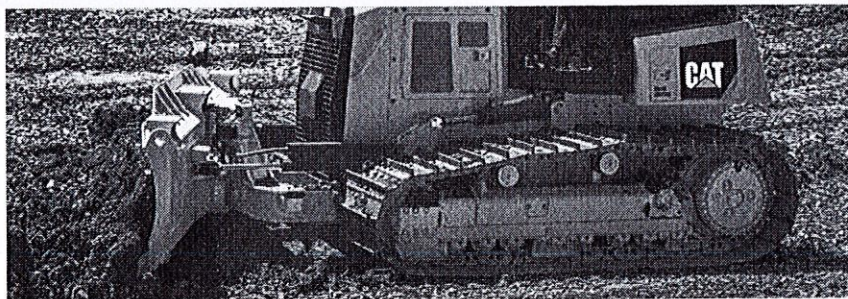
### Rear Implements

To help you match your dozer to the task at hand, you can outfit your D6K2 with a multi-shank parallelogram ripper, winch or drawbar. A dual control package makes it simple to utilize either a ripper or winch.

Ask your Cat dealer for available options to help you optimize your machine for the work you do.

### Forestry Arrangement

Specialized arrangement includes a forestry blade, hydrostatic winch, 360 degree guarding for added protection of the cab and a heavy-duty rear tank guard.



### Undercarriage

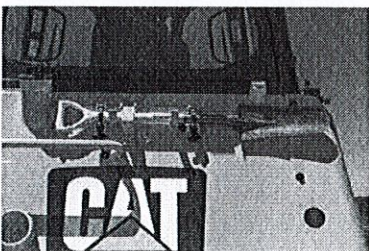
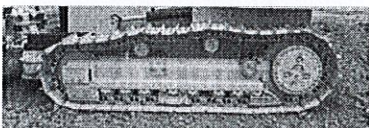
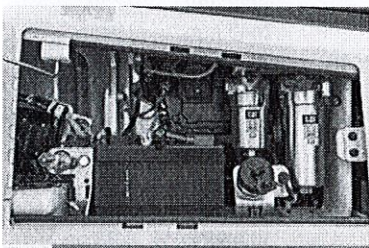
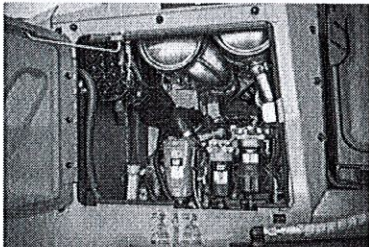
- Optimized undercarriage – eight bottom rollers/two carrier rollers for smoother ride and improved finish grading. New equalizer bar design supports faster fine grading speed.
- Choose Heavy Duty undercarriage for aggressive applications like land clearing, side-slopes or rocky terrain.
- Choose SystemOne™ undercarriage that is designed to work and wear as a system for longer life and lower costs in abrasive or low/moderate impact applications.
- A broad choice of track shoe designs and widths help you further optimize your machine for performance and longer life.





## Serviceability and Customer Support

When uptime counts



Long service intervals and easy maintenance keep the machine up and running to help lower your owning and operating costs.

- Large, hinged door on the left side of the engine compartment for easy access to all regular engine maintenance points.
- Larger access panel to engine oil filter and new panel for easy access to fuel filter.
- Easy ground-level access to hydraulic filters located in the left rear service compartment.
- Grouped maintenance and diagnostic points.
- Ground level access to Diesel Exhaust Fluid fill.
- Updated track roller frame design for easier cleanout.
- Optional bracket mounts to rear of machine to keep a shovel handy.
- Optional onboard refueling pump is designed to make remote fueling from a fuel drum safer and faster.



# D6K2 Track-Type Tractor Specifications

## Engine

Engine Model	Cat C4.4 ACERT with twin turbo	
Emissions	Tier 4 Final/Stage IV/ Korea Tier 4	
Engine Power (maximum)		
SAE J1995	119 kW	160 hp
ISO 14396	117 kW	157 hp
ISO 14396 (DIN)	159 hp	
Net Power (Rated)		
SAE J1349	95 kW	128 hp
ISO 9249	97 kW	130 hp
ISO 9249 (DIN)	132 hp	
Bore	105 mm	4.13 in
Stroke	127 mm	4.99 in
Displacement	4.4 L	268.5 in <sup>3</sup>

- All non road Tier 4 Interim and Final, Stage IIIB and IV, and Korea Tier 4 diesel engines are required to use only Ultra Low Sulfur Diesel (ULSD) fuels containing 15 ppm EPA/10 ppm EU (mg/kg) sulfur or less. Biodiesel blends up to B20 (20% blend by volume) are acceptable when blended with 15 ppm (mg/kg) sulfur or less ULSD. B20 should meet ASTM D7467 specification (biodiesel blend stock should meet Cat biodiesel spec, ASTM D6751 or EN 14214). Cat DEO-ULS™ or oils that meet the Cat ECF-3, API CJ-4, and ACEA E9 specification are required. Consult your OMM for further machine specific fuel recommendations.
- Diesel Exhaust Fluid (DEF) used in Cat Selective Catalytic Reduction (SCR) systems must meet the requirements outlined in the International Organization for Standardization (ISO) standard 22241.
- Engine ratings at 2,200 rpm
- Net power advertised is the power available at the engine flywheel when the engine is equipped with the air cleaner, alternator, A/C compressor at full load and cooling fan at maximum speed.
- No engine derating required up to 3000 m (9,840 ft) altitude; beyond 3000 m (9,840 ft) automatic derating occurs.

## Transmission – Travel Speed

Transmission Type	Hydrostatic	
Forward	0-10 km/h	0-6.2 mph
Reverse	0-10 km/h	0-6.2 mph

## Service Refill Capacities

Fuel Tank	260 L	69 gal
DEF Tank	19 L	5 gal
Cooling System	30 L	7.9 gal
Engine Crankcase	11 L	2.9 gal
Final Drives (each XL and LGP)	18.5 L	4.9 gal
Hydraulic Tank	64 L	16.9 gal

## Weights

Operating Weight		
XL	13 271 kg	29,258 lb
LGP	13 909 kg	30,664 lb
Shipping Weight		
XL	12 996 kg	28,651 lb
LGP	13 634 kg	30,058 lb

- Operating weights: includes EROPS, A/C, lights, VPAT Dozer, transmission, drawbar, engine enclosure, 3-valve hydraulics, 100% fuel, Cat Comfort Series air suspension seat and operator.
- Shipping weights: includes EROPS, A/C, lights, VPAT Dozer, transmission, drawbar, engine enclosure, 3-valve hydraulics, 10% fuel, Cat Comfort Series air suspension seat.

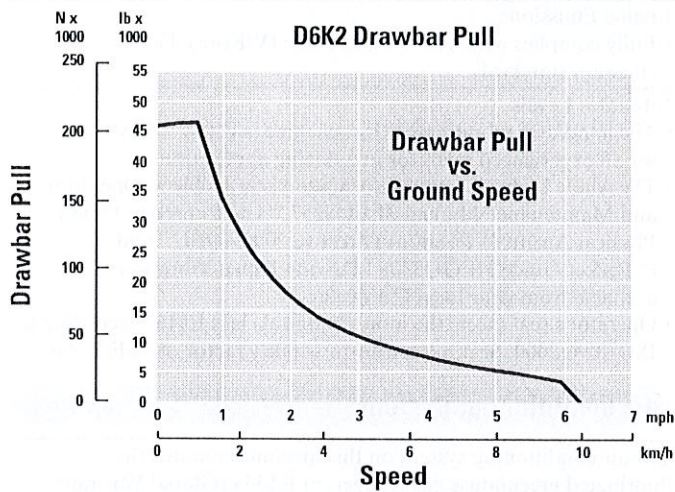
## Undercarriage

Width of Shoe		
XL	560 mm	22 in
LGP	760 mm	30 in
Shoes/Side – XL/LGP	40	
Grouser Height		
MS Shoe	48 mm	1.9 in
ES Shoe	57 mm	2.2 in
Track Gauge		
XL	1770 mm	70 in
LGP	2000 mm	79 in
Track on Ground – XL/LGP	2645 mm	104 in
Ground Contact Area (ISO 16754)		
XL	3.27 m <sup>2</sup>	5070 in <sup>2</sup>
LGP	4.46 m <sup>2</sup>	6912 in <sup>2</sup>
Ground Pressure (ISO 16754)		
XL	39.8 kPa	5.77 psi
LGP	30.6 kPa	4.44 psi
Track Rollers/Side – XL/LGP	8	



# D6K2 Track-Type Tractor Specifications

## Drawbar Pull



## Blades

Blade Type	VPAT, VPAT Foldable*	
Blade Capacity		
XL, VPAT	3.26 m <sup>3</sup>	4.26 yd <sup>3</sup>
LGP, VPAT	3.81 m <sup>3</sup>	4.98 yd <sup>3</sup>
Blade Width Over End Bits		
XL, VPAT	3196 mm	10.5 ft
LGP, VPAT	3682 mm	12.0 ft

\*VPAT foldable blades have the same capacity and width as the XL/LGP VPAT blades.

## Ripper

Type Fixed	Parallelogram	
Pocket Spacing	896 mm	35.3 in
Shank Gauge	1792 mm	70.6 in
Shank Section	58.5 × 138 mm	2.3 × 5.4 in
Number of Pockets	3	
Overall Beam Width	1951 mm	76.8 in
Beam Cross Section	165 × 211 mm	6.5 × 8.3 in
Maximum Penetration Force		
XL	42.2 kN	9,480 lb
LGP	45.1 kN	10,138 lb
Maximum Pry-out Force		
XL	166.7 kN	37,480 lb
LGP	166.7 kN	37,480 lb
Maximum Penetration – XL and LGP	360 mm	14.2 in
Weight with One Shank	845 kg	1,863 lb
Each Additional Shank	34 kg	75 lb

## Winch

Winch Model	PA50	
Winch Drive	Hydrostatic	
Weight*	907 kg	2,000 lb
Winch and Bracket Length	845 mm	33.2 in
Winch Case Width	740 mm	29.1 in
Drum Diameter	205 mm	8 in
Drum Width	274 mm	11 in
Flange Diameter	457 mm	18 in
Drum Capacity (recommended rope)	93 m	306 ft
Drum Capacity (optional rope)	67 m	220 ft
Rope Recommended Diameter	19 mm	0.75 in
Optional Cable Size	22 mm	0.87 in
Cable Ferrule Size (O.D.)	54 mm	2.13 in
Cable Ferrule Size (length)	67 mm	2.63 in
Maximum Bare Drum		
Line Pull	222.4 kN	50,000 lbf
Line Speed	38 m/min	124 ft/min
Maximum Full Drum		
Line Pull	115.7 kN	26,000 lbf
Line Speed	70 m/min	230 ft/min

\*Weight includes: pump, operator controls, oil, mounting brackets and spacers.



# D6K2 Track-Type Tractor Specifications

## Standards

### ROPS/FOPS

- ROPS (Rollover Protective Structure) offered by Caterpillar for the machine meets ROPS criteria ISO 3471:2008.
- FOPS (Falling Object Protective Structure) meets ISO 3449-2005 Level II.

### Brakes

- Brakes meet the standard ISO 10265:2008.

## Sound and Vibration Information

- The declared dynamic operator sound pressure level is 76 dB(A) when "ISO 6396:2008" is used to measure the value for an enclosed cab. The measurements were conducted at the maximum engine cooling fan speed. The sound level may vary at different engine cooling fan speeds. The cab was properly installed and maintained. The measurements were conducted with the cab doors and the cab windows closed.

NOTE: The dynamic operator sound pressure level uncertainty is  $\pm 2$  dB(A).

- Hearing protection may be needed when the machine is operated with an open operator station, in a noisy environment, or with a cab that is not properly maintained.
- The guaranteed exterior sound power level is 109 dB(A) when the value is measured according to the dynamic test procedures and the conditions that are specified in "ISO 6395:2008." The measurements were conducted at the maximum engine cooling fan speed. The sound level may vary at different engine cooling fan speeds.

Sound Level Information for Machines in European Union Countries and in Countries that Adopt the "EU Directives."

The information below applies to only the machine configurations that have the "CE" mark on the Product Identification Plate.

- If equipped, the certification label – 109 dB(A) – is used to verify the environmental sound certification of the machine to the requirements of the European Union. The value that is listed on the label indicates the guaranteed exterior sound power level ( $L_{WA}$ ) at the time of manufacture for the conditions that are specified in "2000/14/EC."

## Sustainability

### Engine Emissions

- Fully complies with Tier 4 Final/Stage IV/Korea Tier 4 emission standards

### Vibration Levels

- The hand/arm vibration of this machine is below 2.5 m/s<sup>2</sup>, for an experienced operator in a dozing application.
- The whole body vibration information is available in Operation and Maintenance Manual SEBU8257, "The European Union Physical Agents (Vibration) Directive 2002/44/EC," and in Pocket Guide HEGQ3339 "Driving Down Vibration," available from your local Cat dealer.
- Operator's seat meets the input "spectral class EM6" according to ISO 7096:2000. Seat has a transmissibility factor of "SEAT<0.7."

## Air Conditioning System

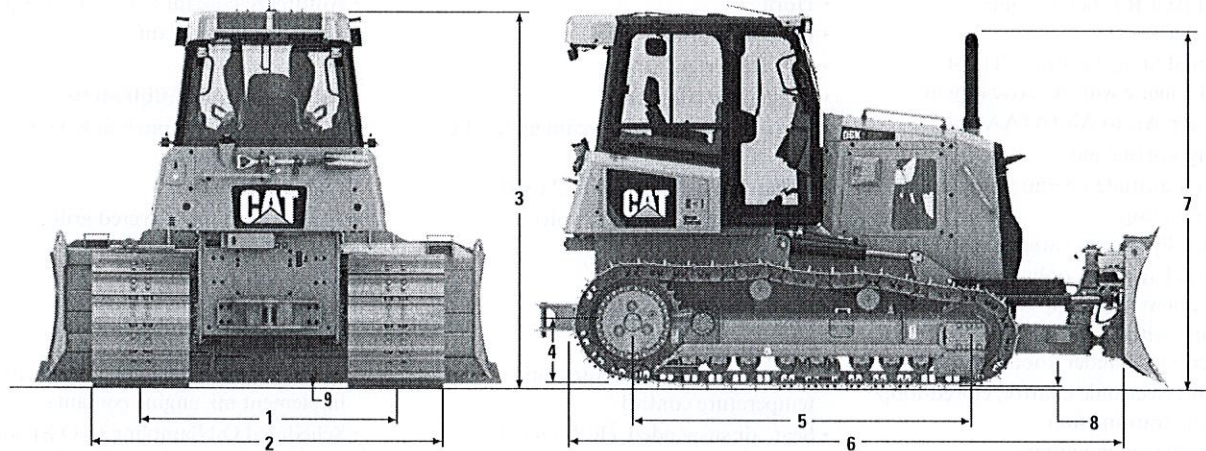
The air conditioning system on this machine contains the fluorinated greenhouse gas refrigerant R134a (Global Warming Potential = 1430). The system contains 1.3 kg of refrigerant which has a CO<sub>2</sub> equivalent of 1.859 metric tonnes.



# D6K2 Track-Type Tractor Specifications

## Dimensions

All dimensions are approximate.



## Tractor Dimensions

	XL		LGP	
<b>1</b> Track Gauge	1770 mm	70 in	2000 mm	79 in
<b>2</b> Width of Tractor				
With the Following Attachments:				
Standard Shoes without Blade	2330 mm	92 in	2760 mm	109 in
Standard Shoes with VPAT Blade Angled 25°	2896 mm	114 in	3337 mm	131 in
Standard Shoes with Foldable Blade in Transport Position	2364 mm	93 in	2850 mm	112 in
<b>3</b> Machine Height from Tip of Grouser (ROPS cab)	2965 mm	117 in	2965 mm	117 in
<b>4</b> Drawbar Height (center of clevis)				
From Ground Face of Shoes	517 mm	20 in	517 mm	20 in
<b>5</b> Length of Track on Ground	2645 mm	104 in	2645 mm	104 in
<b>6</b> Length of Basic Tractor (with C-frame/drawbar)	4618 mm	182 in	4618 mm	182 in
With the Following Attachments, Add to Basic Tractor Length:				
Ripper	815 mm	32 in	815 mm	32 in
PA50 Winch	354 mm	14 in	354 mm	14 in
VPAT Blade, Straight	382 mm	15 in	382 mm	15 in
VPAT Blade, Angled 25° (standard and foldable)	1012 mm	40 in	1012 mm	40 in
<b>7</b> Height Over Stack from Tip of Grouser	2840 mm	112 in	2840 mm	112 in
<b>8</b> Height of Grouser				
MS Shoes	48 mm	1.9 in	48 mm	1.9 in
ES Shoes	57 mm	2.2 in	57 mm	2.2 in
<b>9</b> Ground Clearance from Ground Face of Shoe (per SAE J1234)	350 mm	14 in	350 mm	14 in



# D6K2 Standard Equipment

## Standard Equipment

Standard equipment may vary. Consult your Cat dealer for details.

### POWER TRAIN

- Cat C4.4 ACERT diesel engine turbocharged
- Tier 4 Final/Stage IV/Korea Tier 4 Certified Engine with Aftertreatment
- Aftercooler, Air to Air (ATAAC)
- Glowplug starting aid
- 3000 meter altitude operation capability without derating
- Hydraulically driven, variable speed fan
- Aluminum bar plate cooling system (radiator, power train, aftercooler)
- Air cleaner with integrated precleaner, dust ejector and under hood air intake
- Dual path, electronic control, closed-loop hydrostatic transmission
- Electric fuel priming pump
- Fuel/water separator
- Automatic Traction Control
- Programmable/selectable bi-directional speed control
- Engine Idle Shutdown
- Auto Engine Speed Control

### TECHNOLOGY PRODUCTS

- Cat GRADE with Slope Assist
- Cat Stable Blade
- Cat Slope Indicate
- Product Link\* ready cellular or satellite

### UNDERCARRIAGE

- SystemOne or Heavy Duty undercarriage
- Center tread, sprocketed idler with SystemOne, standard idler with HD
- Lifetime lubricated track rollers (8) and idlers
- Carrier rollers (2)
- Hydraulic track adjusters
- Guards, front/rear guiding
- Replaceable sprocket rim segments

### HYDRAULICS

- Three valve hydraulics
- Load sensing hydraulics

### ELECTRICAL

- Horn
- Back-up alarm
- 12V converter, 10A
- Diagnostic connector
- Batteries, heavy duty, maintenance free, 900 CCA
- Integrated lights (4 front, 2 rear)
- 100 Amp alternator (24 volt)
- 24V electric starter

### OPERATOR ENVIRONMENT

- ROPS/FOPS Cab
- Integrated A/C with automatic temperature control
- Seat, air suspended, cloth for cab
- Seat belt, retractable 76 mm (3 in)
- Foot pads, dash
- Color graphic 178 mm (7 in)
- Travel speed limiter, electronic
- Engine RPM and gear display
- Hour meter, electronic
- Engine air cleaner service indicator, electronic
- Water-in-fuel indicator, electronic
- Throttle switch, rotary
- Eco mode
- Controls, seat mounted, fore/aft adjustment
- Armrests, adjustable
- Mirror, rearview, inside
- Single pedal combining deceleration and braking functions
- Independent forward/reverse speed settings
- Power port, 12 volt
- Coat hook
- Storage compartment
- Cup holder
- Floor mat, rubber, heavy duty
- Intermittent wiper
- 12V radio ready (plug and play)

### FLUIDS

- Antifreeze coolant (-37° C/-34.6° F)
- Extended life coolant

### OTHER STANDARD EQUIPMENT

- C-frame, variable pitch link, hydraulic cylinders and lines
- Engine enclosures
- Hinged radiator louvered grill
- Swing-out radiator fan
- Front pull device
- Rigid drawbar
- Vandalism protection
- Ecology drains (engine, power train and implement oil, engine coolant)
- Scheduled Oil Sampling (S-O-S) ports (engine, power train and implement oil)
- Heavy duty crankcase guard

### INSTRUCTIONS

- Warning decals, ANSI, are included for machines in the U.S.A. only.

\*Product Link licensing not available in all areas. Please consult your Cat dealer for details.



## Optional Equipment

Optional equipment may vary. Consult your Cat dealer for details.

### POWER TRAIN

- Fan, demand, reversing

### UNDERCARRIAGE

- XL, SystemOne
- XL, Heavy Duty
- LGP, SystemOne
- LGP, Heavy Duty

### TRACKS (40 SECTIONS)

- Track Pairs, XL, SystemOne
  - Track, 510 mm (20 in), Moderate Service, XL
  - Track, 510 mm (20 in), Extreme Service, XL
  - Track, 560 mm (22 in), Moderate Service, XL
  - Track, 560 mm (22 in), Extreme Service, XL
- Track Pairs, XL, Heavy Duty
  - Track, 510 mm (20 in), Extreme Service, XL
  - Track, 560 mm (22 in), Extreme Service, XL
- Track Pairs, LGP, SystemOne
  - Track, 760 mm (30 in), Moderate Service, LGP
  - Track, 760 mm (30 in), Extreme Service, LGP
- Track Pairs, LGP, Heavy Duty
  - Track, 760 mm (30 in), Extreme Service, LGP
  - Track, 760 mm (30 in), Self-Cleaning, LGP

### TRACK GUIDING GUARDS

- Guard, track guiding, center
- Guard, track guiding, front/rear
- Guard, track guiding, full length

### OPERATOR ENVIRONMENT

- Cab, Comfort Package
- Cab, Comfort Package, Heavy Duty
- Suspension seat, heated and ventilated with heated joystick handles
- Visibility kit, single rear vision camera
- Radio, AM/FM/AUX/USB/Bluetooth

### HYDRAULICS

- Hydraulic oil, bio

### GUARDS AND PROTECTION

- Cab, protection package
- Screen, rear
- Protection package, standard
- Protection package, front
- Protection package, heavy duty

### BLADES

- Blade, 3196 mm (126 in) ARO XL
- Blade, 3196 mm (126 in) Foldable ARO XL
- Blade, 3684 mm (145 in) ARO LGP
- Blade, 3684 mm (145 in) Foldable ARO LGP
- Mechanical blade pitch
- Blade power pitch

### REAR ATTACHMENTS

- Drawbar
- Ripper, straight teeth
- Ripper, curved teeth
- Counterweight, rear
- Counterweight, additional slabs

### REAR ATTACHMENT CONTROL

- Ripper control
- Winch control
- Ripper and winch control
- Ripper and Power Pitch control
- Ripper, Winch and Power Pitch control

### TECHNOLOGY PRODUCTS

- AccuGrade Ready
- Cat GRADE with 3D (available early 2017)
- Product Link Cellular
- Product Link Satellite
- Product Link Cellular and Satellite

### FUEL SYSTEMS

- Fuel tank, fast fuel and refill ready

### WEATHER PACKAGES AND STARTERS

- Cold Weather Package, 120V
- Cold Weather Package, 240V
- Electrical insulated breather
- Starter standard
- Starter high speed, low temperature

### FLUIDS

- Antifreeze, -50° C (-58° F)

### ELECTRICAL

- Beacon, rotating

### FIELD INSTALLED ATTACHMENTS

- Winch and fairleads
  - PA50 winch, variable speed
  - Fairlead, three rollers
  - Kit, conversion, 4th roller
- Winch step

### MAINTENANCE AND RELATED ATTACHMENTS

- Shovel holder
- Fuel pump, refilling
- Oil change system, high speed



For more complete information on Cat products, dealer services, and industry solutions, visit us on the web at [www.cat.com](http://www.cat.com)

AEHQ7684-02 (02-2017)  
Replaces AEHQ7684-01

© 2017 Caterpillar  
All rights reserved

Materials and specifications are subject to change without notice. Featured machines in photos may include additional equipment. See your Cat dealer for available options.

CAT, CATERPILLAR, SAFETY.CAT.COM, their respective logos, "Caterpillar Yellow" and the "Power Edge" trade dress, as well as corporate and product identity used herein, are trademarks of Caterpillar and may not be used without permission.

VisionLink is a trademark of Trimble Navigation Limited, registered in the United States and in other countries.





Effective with sales to the first user on or after November 1, 2010

# CATERPILLAR LIMITED WARRANTY

## For Selected Machine Models Designated by Caterpillar With 12 Month/Unlimited Hour Warranty

### Worldwide

Caterpillar Inc. or any of its subsidiaries ("Caterpillar") warrants the following products sold by it to be free from defects in material and workmanship:

This warranty does not apply to new replacement engines.

This warranty does not apply to selected models or new replacement engines designated by Caterpillar in India and China.

(In other areas different warranties may apply. Copies of applicable warranties may be obtained by writing to Caterpillar Inc., 100 N.E. Adams St., Peoria, IL 61629.)

- New earthmoving, construction, material handling, forestry product, paving product, compact wheel loader, mini hydraulic excavator, skid steer loader, multi terrain loader, and compact track loader machines designated by Caterpillar as having 12 -months/unlimited hour warranty. See your Cat dealer for a complete listing of covered models.

- Attachments/work tools installed on such machines prior to delivery (unless covered by the Cat Work Tool warranty statement or another manufacturer's warranty). Hammer tool points and compacting plates used on hydraulic hammers are not warranted.

An additional warranty against breakage is applicable to certain Cat ground engaging tools. An additional warranty against wear is applicable to all landfill compactor tips when used in residential waste landfills. Refer to the applicable warranty statements for coverage detail.

This warranty does not apply to Cat batteries, Mobil-trac belts, rubber tracks used on multi terrain loaders, compact track loaders, and mini hydraulic excavators, or Cat Work Tools, which are covered by other Caterpillar warranties.

This warranty is subject to the following:

#### Warranty Period

For new machines and work tools/attachments the warranty period is 12-months/unlimited hours, starting from date of delivery to the first user.

Note: For hydraulic line's quick connect/disconnect components sold on compact wheel loaders, mini hydraulic excavators, skid steer loaders, multi terrain loaders, and compact track loader machines, the warranty period is 50 hours starting from the date of delivery to the first user.

#### Caterpillar Responsibilities

If a defect in material or workmanship is found during the warranty period, Caterpillar will, during normal working hours and at a place of business of a Cat dealer or other source approved by Caterpillar:

- Provide (at Caterpillar's choice) new, remanufactured, or Caterpillar approved repaired parts or assembled components needed to correct the defect.

Note: New, remanufactured, or Caterpillar approved replacement parts provided under the terms of this warranty are warranted for the remainder of the warranty period applicable to the product in which installed as if such parts were original components of that product. Items replaced under this warranty become the property of Caterpillar.

- Replace lubricating oil, filters, antifreeze, and other service items made unusable by the defect.

- Provide reasonable and customary labor needed to correct the defect, except in the case of a new replacement engine originally installed by other than a Cat dealer or source approved by Caterpillar. In this

case, labor is limited to repair only, and removal and installation is the user's responsibility.

#### User Responsibilities

The user is responsible for:

- Providing proof of delivery date to the first user.
- Labor costs, except as stated under "Caterpillar Responsibilities."
- Transportation costs, except as stated under "Caterpillar Responsibilities."
- Premium or overtime labor costs.
- Parts shipping charges in excess of those, that are considered usual and customary.
- Local taxes, if applicable.
- Costs to investigate complaints, unless the problem is caused by a defect in Caterpillar material or workmanship.
- Giving timely notice of a warrantable failure and promptly making the product available for repair.
- Performance of the required maintenance (including use of proper fuel, oil, lubricants, and coolant) and items replaced due to normal wear and tear.
- Allowing Caterpillar access to all electronically stored data.

(continued on the reverse side...)



## Limitations

Caterpillar is not responsible for:

- Failures resulting from any use or installation that Caterpillar judges improper.
- Failures resulting from attachments, accessory items, and parts not sold or approved by Caterpillar.
- Failures resulting from abuse, neglect, and/or improper repair.
- Failures resulting from user's delay in making the product available after being notified of a potential product problem.
- Failures resulting from unauthorized repair or adjustments, and unauthorized fuel setting changes.

*For products operating outside of Australia, Fiji, Nauru, New Caledonia, New Zealand, Papua New Guinea, the Solomon Islands, and Tahiti, the following is applicable:*

NEITHER THE FOREGOING EXPRESS WARRANTY NOR ANY OTHER WARRANTY BY CATERPILLAR, EXPRESS OR IMPLIED, IS APPLICABLE TO ANY ITEM CATERPILLAR SELLS THAT IS WARRANTED DIRECTLY TO THE USER BY ITS MANUFACTURER.

THIS WARRANTY IS EXPRESSLY IN LIEU OF ANY OTHER WARRANTIES, EXPRESS OR IMPLIED, INCLUDING ANY WARRANTY OF MERCHANTABILITY OR FITNESS FOR A PARTICULAR PURPOSE, EXCEPT CATERPILLAR EMISSION-RELATED COMPONENTS WARRANTY FOR NEW ENGINES, WHERE APPLICABLE. REMEDIES UNDER THIS WARRANTY ARE LIMITED TO THE PROVISION OF MATERIAL AND SERVICES, AS SPECIFIED HEREIN.

CATERPILLAR IS NOT RESPONSIBLE FOR INCIDENTAL OR CONSEQUENTIAL DAMAGES.

CATERPILLAR EXCLUDES ALL LIABILITY FOR ARISING FROM ANY NEGLIGENCE ON ITS PART OR ON THE PART OF ANY OF ITS EMPLOYEES, AGENTS, OR REPRESENTATIVES IN RESPECT OF THE MANUFACTURE OR SUPPLY OF GOODS OR THE PROVISION OF SERVICES RELATING TO THE GOODS.

IF OTHERWISE APPLICABLE, THE VIENNA CONVENTION ON CONTRACTS FOR THE INTERNATIONAL SALE OF GOODS IS EXCLUDED IN ITS ENTIRETY.

*For products operating in Australia, Fiji, Nauru, New Caledonia, New Zealand, Papua New Guinea, the Solomon Islands, and Tahiti, the following is applicable:*

THIS WARRANTY IS IN ADDITION TO WARRANTIES AND CONDITIONS IMPLIED BY STATUTE AND OTHER STATUTORY RIGHTS AND OBLIGATIONS THAT BY ANY APPLICABLE LAW CANNOT BE EXCLUDED, RESTRICTED OR MODIFIED ("MANDATORY RIGHTS"). ALL OTHER WARRANTIES OR CONDITIONS, EXPRESS OR IMPLIED (BY STATUTE OR OTHERWISE), ARE EXCLUDED.

NEITHER THIS WARRANTY NOR ANY OTHER CONDITION OR WARRANTY BY CATERPILLAR, EXPRESS OR IMPLIED (SUBJECT ONLY TO THE MANDATORY RIGHTS), IS APPLICABLE TO ANY ITEM CATERPILLAR SELLS THAT IS WARRANTED DIRECTLY TO THE USER BY ITS MANUFACTURER.

TO THE EXTENT PERMITTED UNDER THE MANDATORY RIGHTS, IF CATERPILLAR IS THE SUPPLIER TO THE USER, CATERPILLAR'S LIABILITY SHALL BE LIMITED AT ITS OPTION TO (a) IN THE CASE OF SERVICES, THE SUPPLY OF THE SERVICES AGAIN OR THE PAYMENT OF THE COST OF HAVING THE SERVICES SUPPLIED AGAIN, AND (b) IN THE CASE OF GOODS, THE REPAIR OR REPLACEMENT OF THE GOODS, THE SUPPLY OF EQUIVALENT GOODS, THE PAYMENT OF THE COST OF SUCH REPAIR OR REPLACEMENT OR THE ACQUISITION OF EQUIVALENT GOODS.

CATERPILLAR EXCLUDES ALL LIABILITY FOR ARISING FROM ANY NEGLIGENCE ON ITS PART OR ON THE PART OF ANY OF ITS EMPLOYEES, AGENTS OR REPRESENTATIVES IN RESPECT OF THE MANUFACTURE OR SUPPLY OF GOODS OR THE PROVISION OF SERVICES RELATING TO THE GOODS.

CATERPILLAR IS NOT LIABLE FOR INCIDENTAL OR CONSEQUENTIAL DAMAGES UNLESS IMPOSED UNDER MANDATORY RIGHTS.

IF OTHERWISE APPLICABLE, THE VIENNA CONVENTION (CONTRACTS FOR THE INTERNATIONAL SALE OF GOODS) IS EXCLUDED IN ITS ENTIRETY.

This warranty covers every major component of the products. Claims under this warranty should be submitted to a place of business of a Cat dealer or other source approved by Caterpillar. For further information concerning either the location to submit claims or Caterpillar as the issuer of this warranty, write Caterpillar Inc., 100 N. E. Adams St., Peoria, IL USA 61629.



# CONTROL YOUR COSTS MINIMIZE YOUR RISKS

This plan safeguards your investments in new, used and rebuilt machines beyond the standard warranty period. It includes all parts and labor to protect you against failures caused by defects in materials and workmanship. With the Powertrain Equipment Protection Plan, you can increase the predictability of service and maintenance costs—and reduce unplanned downtime.

## WHAT WE DO

- Perform necessary inspections to confirm eligibility
- Install parts approved by Caterpillar on covered repairs
- Validate your enrollment in the program

## WHAT YOU DO

- Operate equipment according to the Cat Operation & Maintenance Manual (OMM)
- Have recommended preventive maintenance performed at intervals specified in the OMM
- Upon request, provide proof of preventive maintenance compliance (receipts, copies of work orders, invoices)
- Promptly provide the machine for repair in the event of a covered failure

Engine - Internal Components	Camshaft & Camshaft Bearings	Hydrostatic Pumps &
Oil Cooler	Timing / Accessory Gears	Drive Motors
Manifolds	Timing Chain / Belt	Linkage / lines Connected to
Fan Motor	Inlet / Exhaust Valve	Hystat Pump
Water Pump	Valve Cover & Base	Drive (pilot / eh) Control Valves
Fuel Injection Pumps	Valve Spring & Guide	Bevel and Transfer Case
Injectors	Rocker Arm	
Lift / Transfer Pump	Rocker Shaft Assembly	
Senders / Solenoids / Sensors	Push Rod	Axles
Thermostat	Balancer	Axle Seals
Flywheel & Torque Converter	Fuel Pump / Governor Drive	Final Drive & Wheel
Engine Oil Filter Mount	Oil Pump	Final Drive Case / Bore
Turbocharger	Oil Pan Group	Final Drive Chain
AC Compressor / Condenser	Fan & Fan Drive	Final Drive Gears
Electronic Control Modules		Axle Shaft
Oil Hoses / Lines (non-hydrostatic)		Drive Axle Oil Pump
Cylinder Block		
Piston	Transmissions	
Piston Rings	Hydraulic Controls	Steering Clutch
Piston & Connecting Rod	Transmission Oil Filter Base	Steering Clutch & Brake Control Valve
Crankshaft, Main Bearings & Rod Bearings	Transmission Gears	
	Final Drives/Planetary	
	Drive Shafts	
	Transfer Case	
		Hydraulic Oil Coolers

## EXCLUSIONS

**If a component is not listed, it may not be included in the plan. Other exclusions include:**

- > Improper or abusive use of the machine
  - > Lubricating oil, antifreeze, filters, consumables and other maintenance items replaced during the covered component repair, unless such items are rendered unusable by a covered component failure
  - > Failures caused by normal wear-out
  - > Freight charges for parts shipments
  - > Travel time and mileage involved in getting to a job site
  - > Hauling costs and / or retrieval costs
  - > Overtime labor costs
  - > Repair costs resulting from the failure of any non-covered components
  - > Downtime loss
  - > Equipment rental charges
  - > Any incidental / consequential damages or costs incurred as a result of a covered component failure.
  - > Modifications unless approved by Caterpillar
- Examples of covered and excluded components or items are listed here. The actual dealer contract will govern. For a complete list of included components and more information on Cat Equipment Protection Plans, contact your local Cat dealer.**





## Employment Eligibility Verification

Welcome  
Teresa Martin

User ID  
TMOFS402

Last Login  
09:22 AM - 01/06/2012 Log Out



Click any for help

[Home](#)

[My Cases](#)

[New Case](#)

[View Cases](#)

[Search Cases](#)

[My Profile](#)

[Edit Profile](#)

[Change Password](#)

[Change Security Questions](#)

[My Company](#)

[Edit Company Profile](#)

[Add New User](#)

[View Existing Users](#)

[Close Company Account](#)

[My Reports](#)

[View Reports](#)

[My Resources](#)

[View Essential Resources](#)

[Take Tutorial](#)

[View User Manual](#)

[Contact Us](#)

### Company Information

Company Name: Thompson Tractor Co., Inc.

[View / Edit](#)

Company ID Number: 47130

Doing Business As (DBA)  
Name:

DUNS Number:

#### Physical Location:

Address 1: 2401 Pinson Highway

Address 2:

City: Birmingham

State: AL

Zip Code: 35217

County: JEFFERSON

#### Mailing Address:

Address 1: P O. Box 10367

Address 2:

City: Birmingham

State: AL

Zip Code: 35202-0367

#### Additional Information:

Employer Identification Number: 630377478

Total Number of Employees: 1,000 to 2,499

Parent Organization:

Administrator:

Organization Designation:

Employer Category:

NAICS Code: 423 - MERCHANT WHOLESALERS, DURABLE GOODS

[View / Edit](#)

Total Hiring Sites: 40

[View / Edit](#)

Total Points of Contact: 3

[View / Edit](#)

[View IDU](#)



Request for Taxpayer  
Identification Number and Certification

Give form to the  
requester. Do not  
send to the IRS.

Print or type  
See Specific Instructions on page 2.

Name (as shown on your income tax return)

Thompson Tractor Co., Inc. DBA Thompson Power Systems, Thompson Lift Truck Co.

Business name, if different from above

and The Cat Rent Store

Check appropriate box: ☐ Individual/Sole proprietor ☒ Corporation ☐ Partnership

☐ Limited liability company. Enter the tax classification (D=disregarded entity, C=corporation, P=partnership) ▶ .....

☐ Other (see instructions) ▶

☒ Exempt  
payee

Address (number, street, and apt. or suite no.)

P O Box 10367 2401 Pinson Hwy. Tarrant, AL 35217

City, state, and ZIP code

Birmingham, AL 35202-0367

List account number(s) here (optional)

Lockbox Remit To: P O Box 934065, Atlanta, GA 31193-4005

Requester's name and address (optional)

**Part I** Taxpayer Identification Number (TIN)

Enter your TIN in the appropriate box. The TIN provided must match the name given on Line 1 to avoid backup withholding. For individuals, this is your social security number (SSN). However, for a resident alien, sole proprietor, or disregarded entity, see the Part I Instructions on page 3. For other entities, it is your employer identification number (EIN). If you do not have a number, see *How to get a TIN* on page 3.

Note. If the account is in more than one name, see the chart on page 4 for guidelines on whose number to enter.

Social security number

or

Employer identification number

63 : 0377478

**Part II** Certification

Under penalties of perjury, I certify that:

1. The number shown on this form is my correct taxpayer identification number (or I am waiting for a number to be issued to me), and
2. I am not subject to backup withholding because: (a) I am exempt from backup withholding, or (b) I have not been notified by the Internal Revenue Service (IRS) that I am subject to backup withholding as a result of a failure to report all interest or dividends, or (c) the IRS has notified me that I am no longer subject to backup withholding, and
3. I am a U.S. citizen or other U.S. person (defined below).

**Certification Instructions.** You must cross out Item 2 above if you have been notified by the IRS that you are currently subject to backup withholding because you have failed to report all interest and dividends on your tax return. For real estate transactions, item 2 does not apply. For mortgage interest paid, acquisition or abandonment of secured property, cancellation of debt, contributions to an individual retirement arrangement (IRA), and generally, payments other than interest and dividends, you are not required to sign the Certification, but you must provide your correct TIN. See the Instructions on page 4.

Sign  
Here

Signature of  
U.S. person ▶

*Linda K. Duncan, Controller*

Date ▶

**General Instructions**

Section references are to the Internal Revenue Code unless otherwise noted.

**Purpose of Form**

A person who is required to file an information return with the IRS must obtain your correct taxpayer identification number (TIN) to report, for example, income paid to you, real estate transactions, mortgage interest you paid, acquisition or abandonment of secured property, cancellation of debt, or contributions you made to an IRA.

Use Form W-9 only if you are a U.S. person (including a resident alien), to provide your correct TIN to the person requesting it (the requester) and, when applicable, to:

1. Certify that the TIN you are giving is correct (or you are waiting for a number to be issued),
2. Certify that you are not subject to backup withholding, or
3. Claim exemption from backup withholding if you are a U.S. exempt payee. If applicable, you are also certifying that as a U.S. person, your allocable share of any partnership income from a U.S. trade or business is not subject to the withholding tax on foreign partners' share of effectively connected income.

Note. If a requester gives you a form other than Form W-9 to request your TIN, you must use the requester's form if it is substantially similar to this Form W-9.

**Definition of a U.S. person.** For federal tax purposes, you are considered a U.S. person if you are:

- An individual who is a U.S. citizen or U.S. resident alien,
- A partnership, corporation, company, or association created or organized in the United States or under the laws of the United States,
- An estate (other than a foreign estate), or
- A domestic trust (as defined in Regulations section 301.7701-7).

**Special rules for partnerships.** Partnerships that conduct a trade or business in the United States are generally required to pay a withholding tax on any foreign partners' share of income from such business. Further, in certain cases where a Form W-9 has not been received, a partnership is required to presume that a partner is a foreign person, and pay the withholding tax. Therefore, if you are a U.S. person that is a partner in a partnership conducting a trade or business in the United States, provide Form W-9 to the partnership to establish your U.S. status and avoid withholding on your share of partnership income.

The person who gives Form W-9 to the partnership for purposes of establishing its U.S. status and avoiding withholding on its allocable share of net income from the partnership conducting a trade or business in the United States is in the following cases:

- The U.S. owner of a disregarded entity and not the entity.



Company ID Number: 47130

THE E-VERIFY PROGRAM FOR EMPLOYMENT VERIFICATION

MEMORANDUM OF UNDERSTANDING

**ARTICLE I**

**PURPOSE AND AUTHORITY**

This Memorandum of Understanding (MOU) sets forth the points of agreement between the Social Security Administration (SSA), the Department of Homeland Security (DHS) and **Thompson Tractor Co., Inc.** (Employer) regarding the Employer's participation in the Employment Eligibility Verification Program (E-Verify). E-Verify is a program in which the employment eligibility of all newly hired employees will be confirmed after the Employment Eligibility Verification Form (Form I-9) has been completed.

Authority for the E-Verify program is found in Title IV, Subtitle A, of the Illegal Immigration Reform and Immigrant Responsibility Act of 1996 (IIRIRA), Pub. L. 104-208, 110 Stat. 3009, as amended (8 U.S.C. § 1324a note).

**ARTICLE II**

**FUNCTIONS TO BE PERFORMED**

**A. RESPONSIBILITIES OF THE SSA**

1. Upon completion of the Form I-9 by the employee and the Employer, and provided the Employer complies with the requirements of this MOU, SSA agrees to provide the Employer with available information that allows the Employer to confirm the accuracy of Social Security Numbers provided by all newly hired employees and the employment authorization of U.S. citizens.
2. The SSA agrees to provide to the Employer appropriate assistance with operational problems that may arise during the Employer's participation in the E-Verify program. The SSA agrees to provide the Employer with names, titles, addresses, and telephone numbers of SSA representatives to be contacted during the E-Verify process.
3. The SSA agrees to safeguard the information provided by the Employer through the E-Verify program procedures, and to limit access to such information, as is appropriate by law, to individuals responsible for the verification of Social Security Numbers and for evaluation of the E-Verify program or such other persons or entities who may be authorized by the SSA as governed by the Privacy Act (5 U.S.C. § 552a), the Social Security Act (42 U.S.C. 1306(a)), and SSA regulations (20 CFR Part 401).
4. SSA agrees to establish a means of automated verification that is designed (in conjunction with DHS's automated system if necessary) to provide confirmation or tentative nonconfirmation of U.S. citizens' employment eligibility and accuracy of SSA records for both citizens and aliens within 3 Federal Government work days of the initial inquiry.



Company ID Number: 47130

5. SSA agrees to establish a means of secondary verification (including updating SSA records as may be necessary) for employees who contest SSA tentative nonconfirmations that is designed to provide final confirmation or nonconfirmation of U.S. citizens' employment eligibility and accuracy of SSA records for both citizens and aliens within 10 Federal Government work days of the date of referral to SSA, unless SSA determines that more than 10 days may be necessary. In such cases, SSA will provide additional verification instructions.

#### **B. RESPONSIBILITIES OF THE DEPARTMENT OF HOMELAND SECURITY**

1. Upon completion of the Form I-9 by the employee and the Employer and after SSA verifies the accuracy of SSA records for aliens through E-Verify, DHS agrees to provide the Employer access to selected data from DHS's database to enable the Employer to conduct:

- Automated verification checks on newly hired alien employees by electronic means, and
- Photo verification checks (when available) on newly hired alien employees.

2. DHS agrees to provide to the Employer appropriate assistance with operational problems that may arise during the Employer's participation in the E-Verify program. DHS agrees to provide the Employer names, titles, addresses, and telephone numbers of DHS representatives to be contacted during the E-Verify process.

3. DHS agrees to provide to the Employer a manual (the E-Verify Manual) containing instructions on E-Verify policies, procedures and requirements for both SSA and DHS, including restrictions on the use of E-Verify.. DHS agrees to provide training materials on E-Verify.

4. DHS agrees to provide to the Employer a notice, which indicates the Employer's participation in the E-Verify program. DHS also agrees to provide to the Employer anti-discrimination notices issued by the Office of Special Counsel for Immigration-Related Unfair Employment Practices (OSC), Civil Rights Division, and U.S. Department of Justice.

5. DHS agrees to issue the Employer a user identification number and password that permits the Employer to verify information provided by alien employees with DHS's database.

6. DHS agrees to safeguard the information provided to DHS by the Employer, and to limit access to such information to individuals responsible for the verification of alien employment eligibility and for evaluation of the E-Verify program, or to such other persons or entities as may be authorized by applicable law. Information will be used only to verify the accuracy of Social Security Numbers and employment eligibility, to enforce the Immigration and Nationality Act and federal criminal laws, and to ensure accurate wage reports to the SSA.

7. DHS agrees to establish a means of automated verification that is designed (in conjunction with SSA verification procedures) to provide confirmation or tentative nonconfirmation of employees' employment eligibility within 3 Federal Government work days of the initial inquiry.



Company ID Number: 47130

8. DHS agrees to establish a means of secondary verification (including updating DHS records as may be necessary) for employees who contest DHS tentative nonconfirmations and photo non-match tentative nonconfirmations that is designed to provide final confirmation or nonconfirmation of the employees' employment eligibility within 10 Federal Government work days of the date of referral to DHS, unless DHS determines that more than 10 days may be necessary. In such cases, DHS will provide additional verification instructions.

#### **C. RESPONSIBILITIES OF THE EMPLOYER**

1. The Employer agrees to display the notices supplied by DHS in a prominent place that is clearly visible to prospective employees.

2. The Employer agrees to provide to the SSA and DHS the names, titles, addresses, and telephone numbers of the Employer representatives to be contacted regarding E-Verify.

3. The Employer agrees to become familiar with and comply with the E-Verify Manual.

4. The Employer agrees that any Employer Representative who will perform employment verification queries will complete the E-Verify Tutorial before that individual initiates any queries.

A. The employer agrees that all employer representatives will take the refresher tutorials initiated by the E-Verify program as a condition of continued use of E-Verify.

B. Failure to complete a refresher tutorial will prevent the employer from continued use of the program.

5. The Employer agrees to comply with established Form I-9 procedures, with two exceptions:

- If an employee presents a "List B" identity document, the Employer agrees to only accept "List B" documents that contain a photo. (List B documents identified in 8 C.F.R. § 274a.2 (b) (1) (B)) can be presented during the Form I-9 process to establish identity).
- If an employee presents a DHS Form I-551 (Permanent Resident Card) or Form I-766 (Employment Authorization Document) to complete the Form I-9, the Employer agrees to make a photocopy of the document and to retain the photocopy with the employee's Form I-9. The employer will use the photocopy to verify the photo and to assist the Department with its review of photo non-matches that are contested by employees. Note that employees retain the right to present any List A, or List B and List C, documentation to complete the Form I-9. DHS may in the future designate other documents that activate the photo screening tool.

6. The Employer understands that participation in E-Verify does not exempt the Employer from the responsibility to complete, retain, and make available for inspection Forms I-9 that relate to its employees, or from other requirements of applicable regulations or laws, except for the following modified requirements applicable by reason of the Employer's participation in E-Verify: (1) identity documents must have photos, as described in paragraph 5 above; (2) a



Company ID Number: 47130

rebuttable presumption is established that the Employer has not violated section 274A(a)(1)(A) of the Immigration and Nationality Act (INA) with respect to the hiring of any individual if it obtains confirmation of the identity and employment eligibility of the individual in compliance with the terms and conditions of E-Verify ; (3) the Employer must notify DHS if it continues to employ any employee after receiving a final nonconfirmation, and is subject to a civil money penalty between \$500 and \$1,000 for each failure to notify DHS of continued employment following a final nonconfirmation; (4) the Employer is subject to a rebuttable presumption that it has knowingly employed an unauthorized alien in violation of section 274A(a)(1)(A) if the Employer continues to employ any employee after receiving a final nonconfirmation; and (5) no person or entity participating in E-Verify is civilly or criminally liable under any law for any action taken in good faith on information provided through the confirmation system. DHS reserves the right to conduct Form I-9 compliance inspections during the course of E-Verify, as well as to conduct any other enforcement activity authorized by law.

7. The Employer agrees to initiate E-Verify verification procedures within 3 Employer business days after each employee has been hired (but after both sections 1 and 2 of the Form I-9 have been completed), and to complete as many (but only as many) steps of the E-Verify process as are necessary according to the E-Verify Manual. The Employer is prohibited from initiating verification procedures before the employee has been hired and the Form I-9 completed. If the automated system to be queried is temporarily unavailable, the 3-day time period is extended until it is again operational in order to accommodate the Employer's attempting, in good faith, to make inquiries during the period of unavailability. In all cases, the Employer must use the SSA verification procedures first, and use DHS verification procedures and photo screening tool only after the the SSA verification response has been given.

8. The Employer agrees not to use E-Verify procedures for pre-employment screening of job applicants, support for any unlawful employment practice, or any other use not authorized by this MOU. The Employer must use E-Verify for all new employees and will not verify only certain employees selectively. The Employer agrees not to use E-Verify procedures for re-verification, or for employees hired before the date this MOU is in effect. The Employer understands that if the Employer uses E-Verify procedures for any purpose other than as authorized by this MOU, the Employer may be subject to appropriate legal action and the immediate termination of its access to SSA and DHS information pursuant to this MOU.

9. The Employer agrees to follow appropriate procedures (see Article III.B. below) regarding tentative nonconfirmations, including notifying employees of the finding, providing written referral instructions to employees, allowing employees to contest the finding, and not taking adverse action against employees if they choose to contest the finding. Further, when employees contest a tentative nonconfirmation based upon a photo non-match, the Employer is required to take affirmative steps (see Article III.B. below) to contact DHS with information necessary to resolve the challenge.

10. The Employer agrees not to take any adverse action against an employee based upon the employee's employment eligibility status while SSA or DHS is processing the verification request unless the Employer obtains knowledge (as defined in 8 C.F.R. § 274a.1 (l)) that the employee is not work authorized. The Employer understands that an initial inability of the SSA or DHS automated verification to verify work authorization, a tentative nonconfirmation, or the finding of



Company ID Number: 47130

a photo non-match, does not mean, and should not be interpreted as, an indication that the employee is not work authorized. In any of the cases listed above, the employee must be provided the opportunity to contest the finding, and if he or she does so, may not be terminated or suffer any adverse employment consequences until and unless secondary verification by SSA or DHS has been completed and a final nonconfirmation has been issued. If the employee does not choose to contest a tentative nonconfirmation or a photo non-match, then the Employer can find the employee is not work authorized and take the appropriate action.

11. The Employer agrees to comply with section 274B of the INA by not discriminating unlawfully against any individual in hiring, firing, or recruitment or referral practices because of his or her national origin or, in the case of a protected individual as defined in section 274B(a)(3) of the INA, because of his or her citizenship status. The Employer understands that such illegal practices can include selective verification or use of E-Verify, discharging or refusing to hire eligible employees because they appear or sound "foreign", and premature termination of employees based upon tentative nonconfirmations, and that any violation of the unfair immigration-related employment practices provisions of the INA could subject the Employer to civil penalties pursuant to section 274B of the INA and the termination of its participation in E-Verify. If the Employer has any questions relating to the anti-discrimination provision, it should contact OSC at 1-800-255-7688 or 1-800-237-2515 (TDD).

12. The Employer agrees to record the case verification number on the employee's Form I-9 or to print the screen containing the case verification number and attach it to the employee's Form I-9.

13. The Employer agrees that it will use the information it receives from the SSA or DHS pursuant to E-Verify and this MOU only to confirm the employment eligibility of newly-hired employees after completion of the Form I-9. The Employer agrees that it will safeguard this information, and means of access to it (such as PINS and passwords) to ensure that it is not used for any other purpose and as necessary to protect its confidentiality, including ensuring that it is not disseminated to any person other than employees of the Employer who are authorized to perform the Employer's responsibilities under this MOU.

14. The Employer acknowledges that the information which it receives from SSA is governed by the Privacy Act (5 U.S.C. § 552a (i) (1) and (3)) and the Social Security Act (42 U.S.C. 1306(a)), and that any person who obtains this information under false pretenses or uses it for any purpose other than as provided for in this MOU may be subject to criminal penalties.

15. The Employer agrees to allow DHS and SSA, or their authorized agents or designees, to make periodic visits to the Employer for the purpose of reviewing E-Verify -related records, i.e., Forms I-9, SSA Transaction Records, and DHS verification records, which were created during the Employer's participation in the E-Verify Program. In addition, for the purpose of evaluating E-Verify, the Employer agrees to allow DHS and SSA or their authorized agents or designees, to interview it regarding its experience with E-Verify, to interview employees hired during E-Verify use concerning their experience with the pilot, and to make employment and E-Verify related records available to DHS and the SSA, or their designated agents or designees. Failure to comply with the terms of this paragraph may lead DHS to terminate the Employer's access to E-Verify.



Company ID Number: 47130

### **ARTICLE III**

#### **REFERRAL OF INDIVIDUALS TO THE SSA AND THE DEPARTMENT OF HOMELAND SECURITY**

##### **A. REFERRAL TO THE SSA**

1. If the Employer receives a tentative nonconfirmation issued by SSA, the Employer must print the tentative nonconfirmation notice as directed by the automated system and provide it to the employee so that the employee may determine whether he or she will contest the tentative nonconfirmation.
2. The Employer will refer employees to SSA field offices only as directed by the automated system based on a tentative nonconfirmation, and only after the Employer records the case verification number, reviews the input to detect any transaction errors, and determines that the employee contests the tentative nonconfirmation. The Employer will transmit the Social Security Number to SSA for verification again if this review indicates a need to do so. The Employer will determine whether the employee contests the tentative nonconfirmation as soon as possible after the Employer receives it.
3. If the employee contests an SSA tentative nonconfirmation, the Employer will provide the employee with a referral letter and instruct the employee to visit an SSA office to resolve the discrepancy within 8 Federal Government work days. The Employer will make a second inquiry to the SSA database using E-Verify procedures on the date that is 10 Federal Government work days after the date of the referral in order to obtain confirmation, or final nonconfirmation, unless otherwise instructed by SSA or unless SSA determines that more than 10 days is necessary to resolve the tentative nonconfirmation..
4. The Employer agrees not to ask the employee to obtain a printout from the Social Security Number database (the Numident) or other written verification of the Social Security Number from the SSA.

##### **B. REFERRAL TO THE DEPARTMENT OF HOMELAND SECURITY**

1. If the Employer receives a tentative nonconfirmation issued by DHS, the Employer must print the tentative nonconfirmation notice as directed by the automated system and provide it to the employee so that the employee may determine whether he or she will contest the tentative nonconfirmation.
2. If the Employer finds a photo non-match for an alien who provides a document for which the automated system has transmitted a photo, the employer must print the photo non-match tentative nonconfirmation notice as directed by the automated system and provide it to the employee so that the employee may determine whether he or she will contest the finding.
3. The Employer agrees to refer individuals to DHS only when the employee chooses to contest a tentative nonconfirmation received from DHS automated verification process or when



Company ID Number: 47130

the Employer issues a tentative nonconfirmation based upon a photo non-match. The Employer will determine whether the employee contests the tentative nonconfirmation as soon as possible after the Employer receives it.

4. If the employee contests a tentative nonconfirmation issued by DHS, the Employer will provide the employee with a referral letter and instruct the employee to contact the Department through its toll-free hotline within 8 Federal Government work days.

5. If the employee contests a tentative nonconfirmation based upon a photo non-match, the Employer will provide the employee with a referral letter to DHS. DHS will electronically transmit the result of the referral to the Employer within 10 Federal Government work days of the referral unless it determines that more than 10 days is necessary.

6. The Employer agrees that if an employee contests a tentative nonconfirmation based upon a photo non-match, the Employer will send a copy of the employee's Form I-551 or Form I-766 to DHS for review by:

- Scanning and uploading the document, or
- Sending a photocopy of the document by an express mail account (furnished and paid for by DHS).

7. The Employer understands that if it cannot determine whether there is a photo match/non-match, the Employer is required to forward the employee's documentation to DHS by scanning and uploading, or by sending the document as described in the preceding paragraph, and resolving the case as specified by the Immigration Services Verifier at DHS who will determine the photo match or non-match.

#### **ARTICLE IV**

##### **SERVICE PROVISIONS**

The SSA and DHS will not charge the Employer for verification services performed under this MOU. The Employer is responsible for providing equipment needed to make inquiries. To access the E-Verify System, an Employer will need a personal computer with Internet access.

#### **ARTICLE V**

##### **PARTIES**

This MOU is effective upon the signature of all parties, and shall continue in effect for as long as the SSA and DHS conduct the E-Verify program unless modified in writing by the mutual consent of all parties, or terminated by any party upon 30 days prior written notice to the others. Any and all system enhancements to the E-Verify program by DHS or SSA, including but not limited to the E-Verify checking against additional data sources and instituting new verification procedures, will be covered under this MOU and will not cause the need for a supplemental MOU that outlines these changes. DHS agrees to train employers on all changes made to E-Verify through the use of mandatory refresher tutorials and updates to the E-Verify manual. Even



Company ID Number: 47130

without changes to E-Verify, the Department reserves the right to require employers to take mandatory refresher tutorials.

Termination by any party shall terminate the MOU as to all parties. The SSA or DHS may terminate this MOU without prior notice if deemed necessary because of the requirements of law or policy, or upon a determination by SSA or DHS that there has been a breach of system integrity or security by the Employer, or a failure on the part of the Employer to comply with established procedures or legal requirements. Some or all SSA and DHS responsibilities under this MOU may be performed by contractor(s), and SSA and DHS may adjust verification responsibilities between each other as they may determine.

Nothing in this MOU is intended, or should be construed, to create any right or benefit, substantive or procedural, enforceable at law by any third party against the United States, its agencies, officers, or employees, or against the Employer, its agents, officers, or employees.

Each party shall be solely responsible for defending any claim or action against it arising out of or related to E-Verify or this MOU, whether civil or criminal, and for any liability wherefrom, including (but not limited to) any dispute between the Employer and any other person or entity regarding the applicability of Section 403(d) of IIRIRA to any action taken or allegedly taken by the Employer.

The employer understands that the fact of its participation in E-Verify is not confidential information and may be disclosed as authorized or required by law and DHS or SSA policy, including but not limited to, Congressional oversight, E-Verify publicity and media inquiries, and responses to inquiries under the Freedom of Information Act (FOIA).

The foregoing constitutes the full agreement on this subject between the SSA, DHS, and the Employer.

The individuals whose signatures appear below represent that they are authorized to enter into this MOU on behalf of the Employer and DHS respectively.

**To be accepted as a participant in E-Verify, you should only sign the Employer's Section of the signature page. If you have any questions, contact E-Verify Operations at 888-464-4218.**

**Employer Thompson Tractor Co., Inc.**

**Frank M Wright**

\_\_\_\_\_  
Name (Please type or print)

\_\_\_\_\_  
Title

*Electronically Signed*

*07/11/2007*

\_\_\_\_\_  
Signature

\_\_\_\_\_  
Date

**Department of Homeland Security – Verification Division**



Company ID Number: 47130

**INFORMATION REQUIRED  
FOR THE E-VERIFY PROGRAM**

Information relating to your Company:

Company Name: Thompson Tractor Co., Inc.

Company Facility Address: 2401 Pinson Highway  
Birmingham, AL 35217

Company Alternate Address: P.O. Box 10367  
Birmingham, AL 35202-0367

County or Parish: JEFFERSON

Employer Identification Number: 630377478

North American Industry  
Classification Systems Code: 423

Parent Company: \_\_\_\_\_

Number of Employees: 1,000 to  
2,499      Number of Sites Verified for: 5

Are you verifying for more than 1 site? If yes, please provide the number of sites verified for in each State.

- GEORGIA      5 site(s)

Information relating to the Program Administrator(s) for your Company on policy questions or operational problems:

Name:	Kimberly A Stark		
Telephone Number:	(205) 849 - 4279	Fax Number:	(205) 849 - 4565
E-mail Address:	kimberlystark@thompsontractor.com		
Name:	Frank M Wright		
Telephone Number:	(205) 849 - 4267	Fax Number:	(205) 849 - 4854
E-mail Address:	frankwright@thompsontractor.com		



Company ID Number: 47130

**INFORMATION REQUIRED  
FOR THE E-VERIFY PROGRAM**

Information relating to your Company:

Company Name: Thompson Tractor Co., Inc.

Company Facility Address: 2401 Pinson Highway  
Birmingham, AL 35217

Company Alternate Address: P.O. Box 10367  
Birmingham, AL 35202-0367

County or Parish: JEFFERSON

Employer Identification Number: 630377478

North American Industry  
Classification Systems Code: 423

Parent Company: \_\_\_\_\_

Number of Employees: 1,000 to  
2,499      Number of Sites Verified for: 5

Are you verifying for more than 1 site? If yes, please provide the number of sites verified for in each State.

- GEORGIA      5 site(s)

Information relating to the Program Administrator(s) for your Company on policy questions or operational problems:

Name:	Kimberly A Stark	
Telephone Number:	(205) 849 - 4279	Fax Number: (205) 849 - 4565
E-mail Address:	kimberlystark@thompsontractor.com	
Name:	Frank M Wright	
Telephone Number:	(205) 849 - 4267	Fax Number: (205) 849 - 4854
E-mail Address:	frankwright@thompsontractor.com	



Company ID Number: 47130

**USCIS Verification Division**

Name (Please type or print)

Title

*Electronically Signed*

07/11/2007

Signature

Date