

BID SUBMITTAL FORM
Alabama County Joint Bidding Program
Heavy Equipment – HEAVY DUTY BACKHOE-OPTION A

Company Name: THOMPSON TRACTOR COMPANY

Address: P.O. BOX 10367

BIRMINGHAM, AL 35202-0367

Bid Submitted by: JAY SMITH
(Name of company representative)

Title: SALES OPERATIONS MANAGER E-mail address: JAYSMITH@THOMPSONTRACTOR.COM

Phone: (205) 849-4242 Fax: (205) 849-4394

By submitting this bid, we agree:

Initials

The equipment model number identified below meets the bid specs for this bid item.

JAS

That the bid price will be honored for all counties for the period from Jan. 1, 2021 to Dec. 31, 2021.

JAS

The equipment will be delivered at the bid price to all counties participating in the joint bid program.

JAS

The company acknowledges the freight preparation and delivery price is to be included in the total bid price for the standard machine.

JAS

The company representative listed above will be the contact person for purchasing this bid item under the joint bid program.

JAS

The bid is accompanied by a current catalog or model specification document for the model number identified below.

JAS

The bid is accompanied by a copy of the manufacturer's standard warranty as required in the bid specifications.

JAS

The bid includes the e-verify documentation required by Alabama law.

JAS

If awarded the bid, a performance bond will be provided upon request.

JAS

The bid documents include the **Manufacturer's Suggested Retail Price Sheet (MSRP) for the Standard Machine.**

JAS

Total Bid Price for Standard Machine: \$ 96,413

(Total Bid Price for Standard Machine Includes Freight Preparation, Delivery and Standard Warranty Costs) *

Freight Preparation and Delivery: \$ 3,974

(Included in Standard Machine Bid Price)

Manufacturer's Suggested Retail Price for Standard Machine: \$ 132,434

Equipment Model #: CATERPILLAR 430

Description: BACKHOE LOADER

Signature of company representative submitting bid: _____



Title: SALES OPERATIONS MANAGER

* **NOTE:** Award will be made based on the total cost of the **Standard Machine**. The total cost of the standard machine is to include the freight preparation, delivery and standard warranty cost. Freight preparation, delivery will be excluded from the total bid price of the standard machine in determining the percentage discount for any available options.

BID SUBMITTAL FORM: OPTION COST SHEET

By submitting this bid, we agree:

To offer any available options at the percent difference between the Manufacturer's Suggested Retail Price Sheet and the actual bid price on the Standard Machine*



The bid documents include the **Manufacturer's Suggested Retail Price Sheet (MSRP)** for the Standard Machine



Equipment Model #: CATERPILLAR 430

Description: BACKHOE LOADER

Signature of company representative submitting bid: _____

Title: SALES OPERATIONS MANAGER

***Note:** The percent difference between the **Manufacturer's Suggested Retail Price Sheet (MSRP)** for the standard machine as specified by these **Bid Specifications** and the actual price bid by the vendor will be calculated to determine the percentage discount to be applied to any available options. The bid price of the freight preparation, delivery cost shall be excluded in determining the percentage discount to be applied to available options. Any individual county may choose to add any available option to the standard machine at the percentage discount at the time of purchase.

| 430 | HEAVY DUTY BACKHOE OPTION A | 2021 Pricing |
|----------|--|--------------|
| 543-3343 | 430 BHL STANDARD | \$102,475 |
| 543-4285 | STANDARD STICK 16 FT | \$0 |
| 544-1066 | POWERTRAIN, 4WD, STANDARD SHIFT | \$9,696 |
| 543-5181 | CAT C3.6 DITA ENGINE T4F | \$9,646 |
| 542-7771 | GP HYDRAULICS, 5 FUNCTION / 7 BANK | \$727 |
| 544-0877 | BASE CANOPY | \$0 |
| 545-5047 | STANDARD DISPLAY | \$0 |
| 491-6734 | 8 HALOGEN WORKLIGHTS | \$0 |
| 573-4522 | VINYL SEAT | \$0 |
| 206-1747 | 2" SUSPENSION SEAT BELT | \$0 |
| 560-6797 | CELLULAR PRODUCT LINK PLE643 | \$0 |
| 379-2161 | 12.5 80 / 19.5L-24 GOODYEAR TIRES | \$1,707 |
| 337-9696 | COUNTERWEIGHT, 1,015 LBS | \$1,783 |
| 9R-6007 | STABILIZER PADS, FLIP-OVER | \$339 |
| 545-8548 | LOADER BUCKET PINS | \$0 |
| 337-7385 | 1.30 YD3 GENERAL PURPOSE BUCKET | \$3,263 |
| 9R-5320 | TWO PIECE CUTTING EDGE | \$332 |
| 219-3396 | 24" HEAVY DUTY BUCKET | \$1,911 |
| 559-0872 | ANSI INSTRUCTIONS | \$0 |
| 421-8926 | SERIALIZED TECHNICAL MEDIA KIT | \$0 |
| 433-0154 | STROBE BEACON MAGNETIC MOUNT | \$345 |
| 270-3204 | BOOM WEAR PLATE GROUP | \$210 |
| | | |
| | TOTAL BID PRICE FOR STANDARD MACHINE | \$96,413 |
| | | |
| | FREIGHT PREPARATION AND DELIVERY | \$3,974 |
| | | |
| | TOTAL MANUFACTURER'S SUGGESTED RETAIL PRICE FOR STANDARD MACHINE | \$132,434 |

BID SPECIFICATIONS FOR HEAVY DUTY BACKHOE-OPTION A

GENERAL

These specifications shall be construed as the minimum acceptable standards for a heavy-duty backhoe. Should the manufacturer's current published data or specifications exceed these standards, the manufacturer's standards shall be considered minimum and shall be furnished. All integral parts not specifically mentioned in the scope of these specifications that are necessary to provide a complete working unit shall be furnished. Additionally, the machine offered for bid shall include all standard manufacturer's equipment. The heavy duty loader/backhoes must be a new current production model and shall meet all EPA and other applicable standards at the time of manufacture.

The use of specific names or numbers in the specifications is not intended to restrict the bidder or any seller or manufacturer, but is intended solely for the purpose of indicating the type, size and quality of equipment considered best adapted to the uses of counties participating in this joint bid.

BID SUBMITTAL FORM

Each bidder must submit his or her bid on the Bid Submittal Form included in the invitation to bid package. All written warranties to be submitted shall be attached to the Bid Submittal Form.

BID PRICE

The price bid shall include all destination charges, delivery charges, title fees, rebates and all other applicable costs and refunds.

MANUALS

Each unit shall be provided with one (1) copy of the operator's manual and one (1) copy of the current parts manual. Units will not be accepted for delivery until manuals as outlined above are received by the purchaser.

REPLACEMENT PARTS AVAILABILITY

Parts must be available for 5 years or 7,500 hours of use for the piece of equipment bid. If replacement parts are not delivered within three (3) working days of an order being placed, the bidder will deliver an equivalent machine for the County to use at no cost to the county until such time as the parts are delivered to the County so it can affect repairs to its machine.

WARRANTY

Bidders shall submit a copy of the manufacturer's standard warranty. Warranty shall include service response time of maximum of 36 hours within notification by county.

Yes ☒ No ☐
Page#
or
Attachment ☒

ENGINE

Four-cylinder, four stroke cycle, minimum 220 cubic inch diesel engine, capable of developing a minimum of 107 NET flywheel horsepower with turbo charger.

Yes X No
Page # 1, 11

Coolant circulation to be provided by a gear-driven water pump.

Yes X No
Page # Bid Spec. p. 2

Must have an alternator with a minimum charging capacity of 120 amps.

Yes X No
Page # 23

Engine must be designed and built by the machine manufacturer.

Yes X No
Page # 1, 6, 23

STARTING SYSTEM

Shall be equipped with a 12-volt electrical system, heavy duty starting motor.

Yes X No
Page # 13

Battery shall be a minimum of 880 CCA maintenance free.

Yes X No
Page # 13

TRANSMISSION

Power shuttle transmission.

Yes X No
Page # 6, 11, 12

Minimum of four (4) speeds forward and three (3) reverse speeds.

Yes X No
Page # 11

Minimum travel speed: 24 mph.

Yes X No
Page # 11

Transmission to have an electrical neutral lock switch.

Yes X No
Page # 23

CONTROLS AND HYDRAULICS

Excavator style pilot-operated joystick controls with closed center, variable displacement load sensing hydraulic system.

Yes X No
Page # 12, 23

Separate oil system for engine, transmission, rear axle and hydraulics.

Yes X No
Page # 6, 10, 12

Must have pattern changer valve.

Yes X No
Page # 23

Adjustable steering column.

Yes X No
Page # 23

Air suspension seat.

Yes X No
Page # 5, 23

FRONTEND LOADER

Loader Bucket -- 1.25 min. cu yd. heavy-duty

Yes X No
Page # 16

Loader breakout force (lbs.) -- 11,020 lbs.

Yes X No
Page # 16

Loader lift capacity max. Height (lbs.) -- 7,200 lbs.

Yes X No
Page # 16

Loader pin height -- 11 ft. 5 in.

Yes X No
Page # 16

Loader dump height -- 9 ft. 0 in.

Yes X No
Page # 16

BACKHOE -- TWO LEVEL CONTROL SYSTEM (FIXED LENGTH DIPPER STICK)

Backhoe Bucket -- 24 in. heavy duty bucket (5 teeth)

Yes X No
Page # 22

Bucket breakout force (lbs.) -- 16,150 lbs.

Yes X No
Page # 17

Backhoe stick digging force (lbs.) -- 10,050 lbs.

Yes X No
Page # 17

Boom Lift @ 12 ft. (lbs.) -- 3,200 lbs.

Yes X No
Page # 20

Backhoe maximum digging depth -- 15 ft. 2 in.

Yes X No
Page # 17

Backhoe maximum dumping height 13 ft. 0 in.

Yes X No
Page # 17

BRAKES

Service brakes – hydraulic wet disk.

Yes X No
Page # 23

Parking brake.

Yes X No
Page # 13, 23

All wheel braking shall be available.

Yes X No
Page # 6

FRONT AXLE

4-wheel drive

Yes X No
Page # 12, 14

TIRES AND OUTRIGGERS

Reversible type for use on both paved and non-paved surfaces.

Yes X No
Page # 24

Minimum 19.5L – 24/10 PR rear tires and wheels.

Yes X No
Page # 12

Minimum 12.5/80 – 18/10 PR front tires and wheels.

Yes X No
Page # 12

FUEL TANK

Minimum Capacity -- 42 Gallons

Yes X No
Page # 12

OPEN ROPS CANOPY

Yes X No
Page # 6, 23

OIL ANALYSIS

To be included at no cost of the duration of the warranty period selected at intervals recommended by the manufacturer's warranty and maintenance schedule.

Yes X No
Page #

WEIGHT (STANDARD OPERATING)

The factory specified operating weight only without options. No additional weights may be added for the purpose of meeting these specifications. Minimum 17,500 lbs. SAE standard.

Yes X No
Page # 12

SAFETY DEVICES

Include a fire extinguisher that meets current minimum OSHA requirements complete with Mounting hardware installed on the machine.

Yes ☒ No ☐
Page # Vendor Purchase

Include a rotating or flashing safety beacon installed on top of the cab.

Yes ☒ No ☐
Page # 24



Cat[®] 430

BACKHOE LOADER

The Cat[®] 430 Backhoe Loader delivers exceptional performance, increased fuel efficiency, superior hydraulic system, versatility and an updated operator station. The 430 feature the following:

- **Ergonomic Operator Station** – Ample legroom inside the cab makes rotating the seat simple. The air suspension seat provides comfort to the operator while roading. New backhoe control pods allow for unlimited adjustability.
- **Load Sensing Hydraulics** – The Cat Backhoe Loader's load sensing piston pump provides full hydraulic lifting and digging forces at any engine speed. Variable flow pump matches hydraulic power to work demands.
- **Machine Performance** – The Cat C3.6 engine delivers solid performance and meets U.S. EPA Tier 4 Final/EU Stage V emission standards by utilizing Selective Catalytic Reduction technology with a Diesel Oxidation Catalyst. The system allows the operator to disconnect the machine, even while the diesel exhaust fluid is being purged from the system.
- **Machine Versatility** – The all new Integrated Tool Carrier (IT Coupler) for Single Tilt Loader Arm configurations are available from the factory or for simple field installation. The Cat Backhoe Loader with Integrated Tool Carrier (IT Coupler) will be the most versatile machine on the job site providing quick connection to a variety of Cat Attachments.
- **Cat Attachments** – A large portfolio of Backhoe Loader Attachments, including but not limited to, Quick Couplers, Thumbs, assorted Buckets, and Brooms are available from the factory or for field installation. Cat Backhoe Loaders will be "Dirt Ready" upon delivery.
- **Powershift Transmission** – A Four Speed Powershift Transmission is standard to make shifting gears smooth and as simple as twisting the Powershuttle Lever.
- **Spring Applied Hydraulically Released (SAHR) Parking Brake** – The SAHR Parking Brake is activated at the push of a button and automatically engages when the machine is powered down.

Specifications

Engine

| | | |
|-----------------------------------|--|---------------------|
| Engine | C3.6 86 kW (115 hp) Electronic Turbo Intercooled | |
| Ratings at 2,200 rpm | | |
| Gross Power SAE J1995 | 88 kW | 118 hp |
| Gross Power ISO 14396 | 86 kW | 115 hp |
| Net Power Rating at 2,200 rpm | | |
| SAE J1349 | 80 kW | 107 hp |
| ISO 9249 | 80 kW | 107 hp |
| Net Peak Power Rating @ 2,200 rpm | | |
| SAE J1349 | 80 kW | 107 hp |
| ISO 9249 | 80 kW | 107 hp |
| Dimensions | | |
| Bore | 98 mm | 3.86 in |
| Stroke | 120 mm | 4.72 in |
| Displacement | 3.6 L | 220 in ³ |
| Torque Rise (net) at 1,400 rpm | 40% | |
| SAE J1349 Net | 486 N-m | 358 lb-ft |
| Power Rating Conditions | | |
| No de-rating required up to | 3048 m | 10,000 ft |

- Engine meets Tier 4 Final/Stage V emission standards.

Weights*

| | | |
|--|-----------|-----------|
| Operating Weight* (estimated) | 8188 kg | 18,051 lb |
| Operating Weight (maximum) (ROPS capacity) | 11 000 kg | 24,251 lb |
| Operating Weight (minimum)** | 7525 kg | 16,590 lb |
| Cab, ROPS/FOPS | 145 kg | 320 lb |
| Auto-Shift Transmission | STD | STD |
| Ride Control | 15 kg | 33 lb |
| Air Conditioning | 45 kg | 99 lb |
| All-Wheel Drive | STD | STD |
| MP bucket (0.96 m ³ /1.25 yd ³) | | |
| with fold-over forks | 915 kg | 2,017 lb |
| without fold-over forks | 745 kg | 1,642 lb |
| Loader QC | 245 kg | 540 lb |
| Extendible Stick (excludes ft. counterweight) | 297 kg | 655 lb |
| Counterweights, base | 115 kg | 256 lb |
| Stackable, one | 240 kg | 529 lb |
| Maximum | 460 kg | 1,014 lb |

*Machine configuration: standard stick hoe, OROPS canopy, AWD powershift shift transmission, 0.96 m³ (1.25 yd³) GP (General Purpose) loader bucket, 610 mm (24 in) standard duty hoe bucket, front 340/80-18 and rear 500/70-24 tires, 460 kg (1,014 lb) counterweight, 80 kg (176 lb) operator, full fuel tank.

**Minimum weight configuration is the same as configuration above, however, excludes counterweight, hoe bucket, and operator.



430 Backhoe Loader

Transmission

Power Shift Transmission – Standard

| | | |
|---------------|-----------|---------|
| Forward – 1st | 5.9 km/h | 3.7 mph |
| 2nd | 9.5 km/h | 5.9 mph |
| 3rd | 20 km/h | 12 mph |
| 4th | 41 km/h | 26 mph |
| Reverse – 1st | 5.9 km/h | 3.7 mph |
| 2nd | 12.4 km/h | 7.7 mph |
| 3rd | 27 km/h | 17 mph |

| | Power-Shift Transmission – Optional | | Power-Shift Transmission with LTC – Optional | |
|---------------|---|---------|--|---------|
| Forward – 1st | 5.9 km/h | 3.7 mph | 5.9 km/h | 3.7 mph |
| 2nd | 9.5 km/h | 5.9 mph | 9.5 km/h | 5.9 mph |
| 3rd | 12 km/h | 8 mph | 12 km/h | 8 mph |
| 4th | 20 km/h | 12 mph | 20 km/h | 12 mph |
| 5th | 27 km/h | 17 mph | 27 km/h | 17 mph |
| 5th LTC | — | — | 29 km/h | 18 mph |
| 6th | 41 km/h | 26 mph | 41 km/h | 26 mph |
| 6th LTC** | — | — | 40 km/h | 25 mph |
| Reverse – 1st | 5.9 km/h | 3.7 mph | 5.9 km/h | 3.7 mph |
| 2nd | 12 km/h | 7.7 mph | 12 km/h | 7.7 mph |
| 3rd | 27 km/h | 17 mph | 27 km/h | 17 mph |

*Travel speeds of backhoe loader at full throttle, when equipped with 500/70-24 rear tires.

**Limited by engine speed to 40 km/h (25 mph).

Axle Ratings

Front Axle, AWD

| | | |
|---------|-----------|-----------|
| Static | 23 500 kg | 51,808 lb |
| Dynamic | 9000 kg | 19,841 lb |

Rear Axle

| | | |
|---------|-----------|-----------|
| Static | 26 500 kg | 58,422 lb |
| Dynamic | 10 000 kg | 22,046 lb |

Hydraulic System

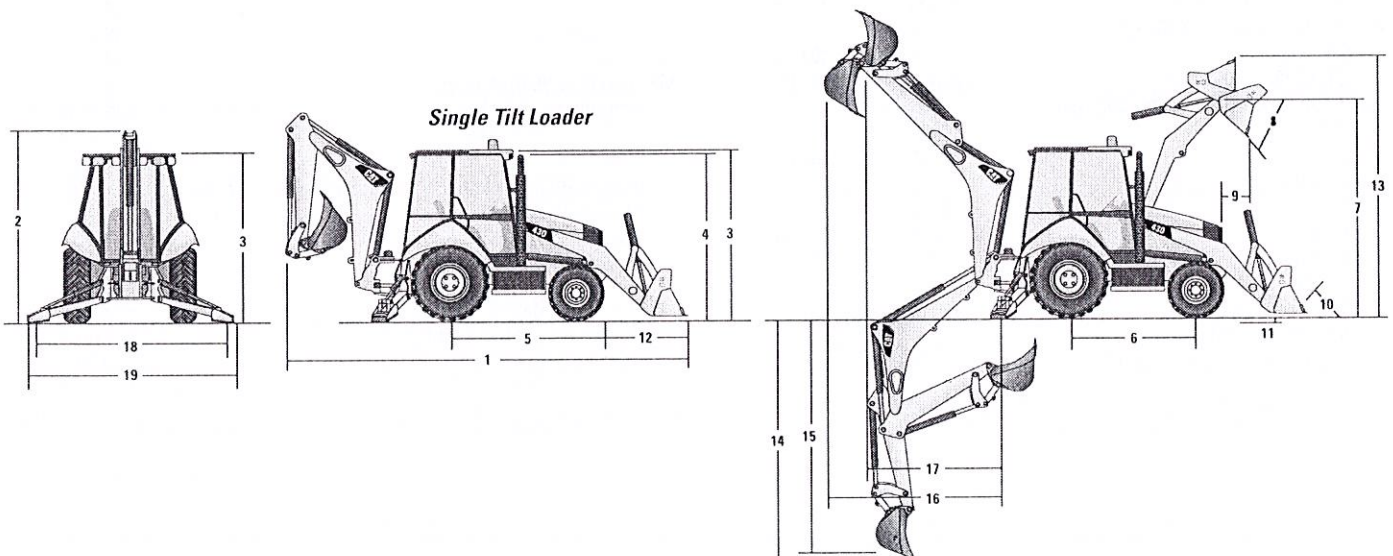
| | | |
|---------------------------|-----------------------------|--------------|
| Type | Closed Center | |
| Pump Type | Variable-flow, Axial Piston | |
| Pump Capacity @ 2,200 rpm | 187 L/min | 49.4 gal/min |
| System Pressure | | |
| Backhoe | 25 000 kPa | 3,626 psi |
| Loader | 25 000 kPa | 3,626 psi |

Steering

| | | |
|---|----------------------|--------|
| Type | Front Wheel Steering | |
| Power Steering | Hydrostatic | |
| One Double-Acting Cylinder | | |
| Bore | 65 mm | 2.6 in |
| Stroke | 106 mm | 4.2 in |
| Rod Diameter | 40 mm | 1.6 in |
| Axle Oscillation | 11° | |
| Turning Circle – (inner wheel not braked) | | |
| Outside front wheels | 8.205 m | 26'11" |
| Outside widest loader bucket | 10.745 m | 35'3" |

Service Refill Capacities

| | | |
|--------------------------------------|---------|----------|
| Cooling System with Air Conditioning | 18.0 L | 4.8 gal |
| Fuel Tank | 160.0 L | 42.3 gal |
| Engine Oil with Filter | 9.0 L | 2.4 gal |
| Diesel Exhaust Fluid (DEF) | 19.0 L | 5.0 gal |
| Transmission – Power Shuttle | | |
| AWD | 18.0 L | 4.8 gal |
| Transmission – Power Shift | | |
| AWD | 19.0 L | 5.0 gal |
| Rear Axle | 16.0 L | 4.2 gal |
| Planetaries | 1.7 L | 0.4 gal |
| Front Axle (AWD) | 11.0 L | 2.9 gal |
| Planetaries | 0.7 L | 0.2 gal |
| Hydraulic System | 95.0 L | 25.1 gal |
| Hydraulic Tank | 42.0 L | 11.1 gal |



430 Backhoe Loader

Dimensions

Machine configuration: standard stick hoe, OROPS canopy, AWD power shift transmission, 0.96 m³ (1.25 yd³) GP loader bucket, 610 mm (24 in) standard duty hoe bucket, 340/80-18 and rear 500/70-24 tires, 460 kg (1,014 lb) counterweight, 80 kg (176 lb) operator, full fuel tank.

Single Tilt Loader with Pin-On Buckets

| | 0.96 m ³ (1.25 yd ³) GP | 1.0 m ³ (1.31 yd ³) GP | 1.07 m ³ (1.40 yd ³) GP | 1.15 m ³ (1.50 yd ³) GP | 1.0 m ³ (1.31 yd ³) MP | 1.07 m ³ (1.40 yd ³) MP |
|---|---|--|---|---|--|---|
| 1 Overall Length (loader on ground) – S-Stick – mm (ft/in) | 7273 (23'10") | 7228 (23'9") | 7294 (23'11") | 7294 (23'11") | 7201 (23'8") | 7201 (23'8") |
| Overall Length (loader on ground) – E-Stick – mm (ft/in) | 7289 (23'11") | 7244 (23'9") | 7310 (24'0") | 7310 (24'0") | 7217 (23'8") | 7217 (23'8") |
| Overall Transport Length – S-Stick – mm (ft/in) | 7304 (24'0") | 7271 (23'10") | 7342 (24'1") | 7342 (24'1") | 7272 (23'10") | 7272 (23'10") |
| Overall Transport Length – E-Stick – mm (ft/in) | 7341 (24'1") | 7287 (23'11") | 7358 (24'2") | 7358 (24'2") | 7288 (23'11") | 7288 (23'11") |
| 2 Overall Transport Height – Standard Stick – mm (ft/in) | 3845 (12'7") | 3845 (12'7") | 3845 (12'7") | 3845 (12'7") | 3845 (12'7") | 3845 (12'7") |
| Overall Transport Height – Extendible Stick – mm (ft/in) | 3866 (12'8") | 3866 (12'8") | 3866 (12'8") | 3866 (12'8") | 3866 (12'8") | 3866 (12'8") |
| Overall Width – mm (ft/in) | 2248 (7'5") | 2248 (7'5") | 2248 (7'5") | 2248 (7'5") | 2248 (7'5") | 2248 (7'5") |
| 3 Height to Top of Cab/Canopy – mm (ft/in) | 2815 (9'3") | 2815 (9'3") | 2815 (9'3") | 2815 (9'3") | 2815 (9'3") | 2815 (9'3") |
| 4 Height to Top of Exhaust Stack – mm (ft/in) | 2720 (8'11") | 2720 (8'11") | 2720 (8'11") | 2720 (8'11") | 2720 (8'11") | 2720 (8'11") |
| Height to Loader Hinge Pin (transport) – mm (ft/in) | 378 (1'3") | 378 (1'3") | 422 (1'5") | 422 (1'5") | 420 (1'5") | 420 (1'5") |
| Ground Clearance (LH step) – mm (ft/in) | 316 (1'0") | 316 (1'0") | 316 (1'0") | 316 (1'0") | 316 (1'0") | 316 (1'0") |
| Ground Clearance (AWD guard) – mm (ft/in) | 312 (1'0") | 312 (1'0") | 312 (1'0") | 312 (1'0") | 312 (1'0") | 312 (1'0") |
| Ground Clearance (485 kg/1,070 lb counterweight) – mm (ft/in) | 289 (0'11") | 289 (0'11") | 289 (0'11") | 289 (0'11") | 289 (0'11") | 289 (0'11") |
| 5 Rear Axle Centerline to Front Grill – mm (ft/in) | 2706 (8'11") | 2706 (8'11") | 2706 (8'11") | 2706 (8'11") | 2706 (8'11") | 2706 (8'11") |
| Front Wheel Tread Gauge – mm (ft/in) | 1895 (6'3") | 1895 (6'3") | 1895 (6'3") | 1895 (6'3") | 1895 (6'3") | 1895 (6'3") |
| Rear Wheel Tread Gauge – mm (ft/in) | 1728 (5'8") | 1728 (5'8") | 1728 (5'8") | 1728 (5'8") | 1728 (5'8") | 1728 (5'8") |
| 6 Wheelbase – mm (ft/in) | 2200 (7'3") | 2200 (7'3") | 2200 (7'3") | 2200 (7'3") | 2200 (7'3") | 2200 (7'3") |

Single Tilt Loader with Quick Coupler

| | 0.96 m ³ (1.25 yd ³) GP | 1.0 m ³ (1.31 yd ³) GP | 1.15 m ³ (1.50 yd ³) GP | 1.0 m ³ (1.31 yd ³) MP | 1.07 m ³ (1.40 yd ³) MP |
|---|---|--|---|--|---|
| 1 Overall Length (loader on ground) – S-Stick – mm (ft/in) | 7455 (24'5") | 7410 (24'4") | 7452 (24'5") | 7362 (24'2") | 7362 (24'2") |
| Overall Length (loader on ground) – E-Stick – mm (ft/in) | 7471 (24'6") | 7426 (24'4") | 7468 (24'6") | 7378 (24'2") | 7378 (24'2") |
| Overall Transport Length – S-Stick – mm (ft/in) | 7431 (24'5") | 7398 (24'3") | 7429 (24'4") | 7360 (24'2") | 7360 (24'2") |
| Overall Transport Length – E-Stick – mm (ft/in) | 7448 (24'5") | 7414 (24'4") | 7446 (24'5") | 7376 (24'2") | 7376 (24'2") |
| 2 Overall Transport Height – Standard Stick – mm (ft/in) | 3845 (12'7") | 3845 (12'7") | 3845 (12'7") | 3845 (12'7") | 3845 (12'7") |
| Overall Transport Height – Extendible Stick – mm (ft/in) | 3866 (12'8") | 3866 (12'8") | 3866 (12'8") | 3866 (12'8") | 3866 (12'8") |
| Overall Width – mm (ft/in) | 2248 (7'5") | 2248 (7'5") | 2248 (7'5") | 2248 (7'5") | 2248 (7'5") |
| 3 Height to Top of Cab/Canopy – mm (ft/in) | 2815 (9'3") | 2815 (9'3") | 2815 (9'3") | 2815 (9'3") | 2815 (9'3") |
| 4 Height to Top of Exhaust Stack – mm (ft/in) | 2720 (8'11") | 2720 (8'11") | 2720 (8'11") | 2720 (8'11") | 2720 (8'11") |
| Height to Loader Hinge Pin (transport) – mm (ft/in) | 345 (1'2") | 346 (1'2") | 346 (1'2") | 344 (1'2") | 344 (1'2") |
| Ground Clearance (LH step) – mm (ft/in) | 316 (1'0") | 316 (1'0") | 316 (1'0") | 316 (1'0") | 316 (1'0") |
| Ground Clearance (AWD guard) – mm (ft/in) | 312 (1'0") | 312 (1'0") | 312 (1'0") | 312 (1'0") | 312 (1'0") |
| Ground Clearance (485 kg/1,070 lb counterweight) – mm (ft/in) | 289 (0'11") | 289 (0'11") | 289 (0'11") | 289 (0'11") | 289 (0'11") |
| 5 Rear Axle Centerline to Front Grill – mm (ft/in) | 2706 (8'11") | 2706 (8'11") | 2706 (8'11") | 2706 (8'11") | 2706 (8'11") |
| Front Wheel Tread Gauge – mm (ft/in) | 1895 (6'3") | 1895 (6'3") | 1895 (6'3") | 1895 (6'3") | 1895 (6'3") |
| Rear Wheel Tread Gauge – mm (ft/in) | 1728 (5'8") | 1728 (5'8") | 1728 (5'8") | 1728 (5'8") | 1728 (5'8") |
| 6 Wheelbase – mm (ft/in) | 2200 (7'3") | 2200 (7'3") | 2200 (7'3") | 2200 (7'3") | 2200 (7'3") |

430 Backhoe Loader

Dimensions

Machine configuration: standard stick hoe, OROPS canopy, AWD power shift transmission, 0.96 m³ (1.25 yd³) GP loader bucket, 610 mm (24 in) standard duty hoe bucket, 340/80-18 and rear 500/70-24 tires, 460 kg (1,014 lb) counterweight, 80 kg (176 lb) operator, full fuel tank.

Loader Bucket Dimensions and Performance

| | Pin-On Buckets | | | | | | | | | | | |
|--|---|----------|--|----------|---|----------|---|----------|--|----------|---|----------|
| | 0.96 m ³ (1.25 yd ³) GP | | 1.0 m ³ (1.31 yd ³) GP | | 1.07 m ³ (1.40 yd ³) GP | | 1.15 m ³ (1.50 yd ³) GP | | 1.0 m ³ (1.31 yd ³) MP | | 1.07 m ³ (1.40 yd ³) MP | |
| Capacity (SAE rated) – m ³ (yd ³) | 0.96 | (1.26) | 1.00 | (1.31) | 1.07 | (1.40) | 1.15 | (1.50) | 1.00 | (1.31) | 1.07 | (1.40) |
| Overall Bucket Width – mm (in) | 2262 | (89) | 2406 | (95) | 2262 | (89) | 2406 | (95) | 2279 | (90) | 2425 | (95) |
| Lift Capacity at Maximum Height – kg (lb) | 3280 | (7,230) | 3286 | (7,245) | 3213 | (7,084) | 3192 | (7,038) | 3059 | (6,745) | 3047 | (6,717) |
| Lift Breakout Force – N (lbf) | 50 179 | (11,280) | 50 941 | (11,452) | 49 644 | (11,160) | 49 467 | (11,120) | 49 114 | (11,041) | 49 017 | (11,019) |
| Tilt Breakout Force – N (lbf) | 49 891 | (11,216) | 53 037 | (11,923) | 50 945 | (11,452) | 50 834 | (11,428) | 56 242 | (12,643) | 56 166 | (12,626) |
| Tipping Load at Breakout Point – kg (lb) | 7081 | (15,610) | 7250 | (15,983) | 6976 | (15,379) | 6959 | (15,341) | 7134 | (15,728) | 7124 | (15,707) |
| 7 Maximum Hinge Pin Height – mm (ft/in) | 3488 | (11'5") | 3488 | (11'5") | 3488 | (11'5") | 3488 | (11'5") | 3488 | (11'5") | 3488 | (11'5") |
| 8 Dump Angle at Full Height – degrees | 44° | | 44° | | 44° | | 44° | | 44° | | 44° | |
| Dump Height at Maximum Angle – mm (ft/in) | 2758 | (9'1") | 2790 | (9'2") | 2736 | (9'0") | 2736 | (9'0") | 2803 | (9'2") | 2803 | (9'2") |
| 9 Dump Reach at Maximum Angle – mm (ft/in) | 807 | (2'8") | 774 | (2'6") | 773 | (2'6") | 773 | (2'6") | 722 | (2'4") | 722 | (2'4") |
| 10 Maximum Bucket Rollback at Ground Level – degrees | 36° | | 36° | | 37° | | 37° | | 37° | | 37° | |
| 11 Digging Depth – mm (ft/in) | 70 | (0'3") | 70 | (0'3") | 110 | (0'4") | 110 | (0'4") | 97 | (0'4") | 97 | (0'4") |
| Maximum Grading Angle – degrees | 113° | | 114° | | 114° | | 114° | | 116° | | 116° | |
| Width of Dozer Cutting Edge – mm (ft/in) | N/A | | N/A | | N/A | | N/A | | 2262 | (7'5") | 2406 | (7'11") |
| 12 Grill to Bucket Cutting Edge, Carry Position – mm (ft/in) | 1480 | (4'10") | 1447 | (4'9") | 1518 | (5'0") | 1517 | (5'0") | 1447 | (4'9") | 1447 | (4'9") |
| 13 Maximum Operating Height – mm (ft/in) | 4356 | (14'3") | 4354 | (14'3") | 4366 | (14'4") | 4397 | (14'5") | 4378 | (14'4") | 4407 | (14'6") |
| Jaw Opening Maximum – mm (ft/in) | N/A | | N/A | | N/A | | N/A | | 843 | (2'9") | 843 | (2'9") |
| Bucket Jaw Clamping Force – N (lbf) | N/A | | N/A | | N/A | | N/A | | 40 160 | 9028 | 40 261 | 9051 |
| Weight (does not include teeth or forks) – kg (lb) | 451 | (994) | 462 | (1,019) | 473 | (1,043) | 493 | (1,087) | 745 | (1,642) | 774 | (1,706) |

| | Loader Quick Coupler | | | | | | | | | | | |
|--|---|----------|--|----------|---|----------|--|----------|---|----------|--|--|
| | 0.96 m ³ (1.25 yd ³) GP | | 1.0 m ³ (1.31 yd ³) GP | | 1.15 m ³ (1.50 yd ³) GP | | 1.0 m ³ (1.31 yd ³) MP | | 1.07 m ³ (1.40 yd ³) MP | | | |
| Capacity (SAE rated) – m ³ (yd ³) | 0.96 | (1.26) | 1.00 | (1.31) | 1.15 | (1.50) | 1.00 | (1.31) | 1.07 | (1.40) | | |
| Overall Bucket Width – mm (in) | 2262 | (89) | 2406 | (95) | 2406 | (95) | 2279 | (90) | 2425 | (95) | | |
| Lift Capacity at Maximum Height – kg (lb) | 2879 | (6,348) | 2880 | (6,350) | 2846 | (6,273) | 2747 | (6,057) | 2711 | (5,976) | | |
| Lift Breakout Force – N (lbf) | 45 144 | (10,148) | 45 749 | (10,284) | 44 845 | (10,081) | 44 659 | (10,039) | 44 400 | (9,981) | | |
| Tilt Breakout Force – N (lbf) | 41 169 | (9,255) | 43 286 | (9,731) | 40 879 | (9,190) | 44 104 | (9,914) | 43 932 | (9,876) | | |
| Tipping Load at Breakout Point – kg (lb) | 6263 | (13,808) | 6395 | (14,099) | 6239 | (13,754) | 6379 | (14,064) | 6355 | (14,010) | | |
| 7 Maximum Hinge Pin Height – mm (ft/in) | 3488 | (11'5") | 3488 | (11'5") | 3488 | (11'5") | 3488 | (11'5") | 3488 | (11'5") | | |
| 8 Dump Angle at Full Height – degrees | 44° | | 44° | | 44° | | 44° | | 44° | | | |
| Dump Height at Maximum Angle – mm (ft/in) | 2623 | (8'7") | 2654 | (8'9") | 2625 | (8'7") | 2690 | (8'10") | 2690 | (8'10") | | |
| 9 Dump Reach at Maximum Angle – mm (ft/in) | 887 | (2'11") | 855 | (2'10") | 886 | (2'11") | 832 | (2'9") | 832 | (2'9") | | |
| 10 Maximum Bucket Rollback at Ground Level – degrees | 37° | | 37° | | 37° | | 37° | | 37° | | | |
| 11 Digging Depth – mm (ft/in) | 111 | (0'4") | 111 | (0'4") | 110 | (0'4") | 101 | (0'4") | 101 | (0'4") | | |
| Maximum Grading Angle – degrees | 109° | | 110° | | 109° | | 111° | | 111° | | | |
| Width of Dozer Cutting Edge – mm (ft/in) | N/A | | N/A | | N/A | | 2262 | (7'5") | 2406 | (7'11") | | |
| 12 Grill to Bucket Cutting Edge, Carry Position – mm (ft/in) | 1607 | (5'3") | 1573 | (5'2") | 1605 | (5'3") | 1535 | (5'0") | 1535 | (5'0") | | |
| 13 Maximum Operating Height – mm (ft/in) | 4439 | (14'7") | 4406 | (14'5") | 4484 | (14'9") | 4476 | (14'8") | 4531 | (14'10") | | |
| Jaw Opening Maximum – mm (ft/in) | N/A | | N/A | | N/A | | 843 | (2'9") | 843 | (2'9") | | |
| Bucket Jaw Clamping Force – N (lbf) | N/A | | N/A | | N/A | | 40 185 | (9,034) | 40 286 | (9,056) | | |
| Weight (does not include teeth or forks) – kg (lb) | 447 | (985) | 457 | (1,008) | 481 | (1,060) | 724 | (1,596) | 753 | (1,660) | | |

430 Backhoe Loader

Dimensions

Machine configuration: standard stick hoe, OROPS canopy, AWD power shift transmission, 0.96 m³ (1.25 yd³) GP loader bucket, 610 mm (24 in) standard duty hoe bucket, 340/80-18 and rear 500/70-24 tires, 460 kg (1,014 lb) counterweight, 80 kg (176 lb) operator, full fuel tank.

Backhoe Dimensions and Performance

| | Standard Stick | | E-Stick Retracted | | E-Stick Extended | |
|--|----------------|----------|-------------------|----------|------------------|----------|
| 14 Digging Depth, SAE (max.) – mm (ft/in) | 4612 | (15'2") | 4721 | (15'6") | 5862 | (19'3") |
| 15 Digging Depth, 2440 mm (8 ft) Flat Bottom – mm (ft/in) | 4262 | (14'0") | 4375 | (14'4") | 5587 | (18'4") |
| Digging Depth, 610 mm (2 ft) Flat Bottom – mm (ft/in) | 4587 | (15'1") | 4693 | (15'5") | 5834 | (19'2") |
| Reach from Rear Axle Centerline at Ground Line – mm (ft/in) | 7122 | (23'4") | 7216 | (23'8") | 8307 | (27'3") |
| 16 Reach from Swing Pivot at Ground Line – mm (ft/in) | 6032 | (19'9") | 6126 | (20'1") | 7217 | (23'8") |
| Maximum Operating Height – mm (ft/in) | 6081 | (19'11") | 6150 | (20'2") | 7038 | (23'1") |
| Loading Height – mm (ft/in) | 4027 | (13'3") | 3988 | (13'1") | 4599 | (15'1") |
| 17 Loading Reach – mm (ft/in) | 1859 | (6'1") | 2026 | (6'8") | 3011 | (9'11") |
| Swing Arc | 180° | | 180° | | 180° | |
| Bucket Rotation | 205° | | 204° | | 204° | |
| 18 Stabilizer Spread, Operating Position (center) – mm (ft/in) | 3310 | (10'10") | 3310 | (10'10") | 3310 | (10'10") |
| Stabilizer Spread, Operating Position (outside) – mm (ft/in) | 3770 | (12'4") | 3770 | (12'4") | 3770 | (12'4") |
| Stabilizer Spread, Transport Position – mm (ft/in) | 2322 | (7'7") | 2322 | (7'7") | 2322 | (7'7") |
| Bucket Dig Force – N (lbf) | 71 897 | (16,163) | 70 904 | (15,940) | 70 904 | (15,940) |
| Stick Dig Force – N (lbf) | 44 867 | (10,086) | 43 939 | (9,878) | 32 517 | (7,310) |

Dimensions with Forks/Material Handling Arm

| Fork Tine Length | 1070 mm (3'6") | | 1220 mm (4'0") | | 1370 mm (4'10") | |
|---|----------------|----------|----------------|----------|-----------------|----------|
| Operating Load (SAE J1197) – kg (lb) | 1971 | (4,346) | 1891 | (4,168) | 1814 | (4,000) |
| SAE Load Center – mm (in) | 535 | (1'9") | 610 | (2'0") | 685 | (2'3") |
| Operating Load (CEN 474-4) – kg (lb) | 2004 | (4,417) | 1988 | (4,382) | 1971 | (4,346) |
| CEN Load Center – mm (ft/in) | 500 | (1'8") | 500 | (1'8") | 500 | (1'8") |
| Overall Length (A) (forks on ground) – mm (ft/in) | 7789 | (25'7") | 7939 | (26'1") | 8089 | (26'6") |
| Reach at Ground (from grill to heel of fork) – mm (ft/in) | 939 | (3'1") | 939 | (3'1") | 938 | (3'1") |
| Maximum Reach (from grill to heel of fork) – mm (ft/in) | 1524 | (5'0") | 1524 | (5'0") | 1524 | (5'0") |
| Fork Height at Maximum Reach – mm (ft/in) | 1619 | (5'4") | 1619 | (5'4") | 1619 | (5'4") |
| Reach at Maximum Height (from grill to heel of fork) – mm (ft/in) | 749 | (2'5") | 749 | (2'5") | 749 | (2'5") |
| Maximum Fork Height – mm (ft/in) | 3418 | (11'3") | 3418 | (11'3") | 3418 | (11'3") |
| Maximum Fork Depth (below ground level) – mm (ft/in) | -38 | (-1'11") | -38 | (-1'10") | -39 | (-1'10") |

| Material Handling Arm Position | Retracted | | Mid-Position | | Extended | |
|--|-----------|---------|--------------|----------|----------|---------|
| Operating Load (SAE J1197 and CEN 474-4) – kg (lb)* | 1201 | (2,647) | 808 | (1,782) | 589 | (1,298) |
| Overall Length, Maximum – mm (ft/in) | 9045 | (29'8") | 10 045 | (32'11") | 11 043 | (36'3") |
| Reach at Maximum Depth (from machine nose) – mm (ft/in) | 544 | (1'9") | 550 | (1'10") | 557 | (1'10") |
| Maximum Depth – mm (ft/in) | 2618 | (8'7") | 3618 | (11'10") | 4616 | (15'2") |
| Maximum Reach (from machine nose) – mm (ft/in) | 3221 | (10'7") | 4221 | (13'10") | 5219 | (17'1") |
| Height at Maximum Reach – mm (ft/in) | 1118 | (3'8") | 1124 | (3'8") | 1130 | (3'8") |
| Reach at Maximum Height (from machine nose) – mm (ft/in) | 1783 | (5'10") | 2473 | (8'1") | 3161 | (10'4") |
| Maximum Height – mm (ft/in) | 4445 | (14'7") | 5169 | (16'11") | 5891 | (19'4") |

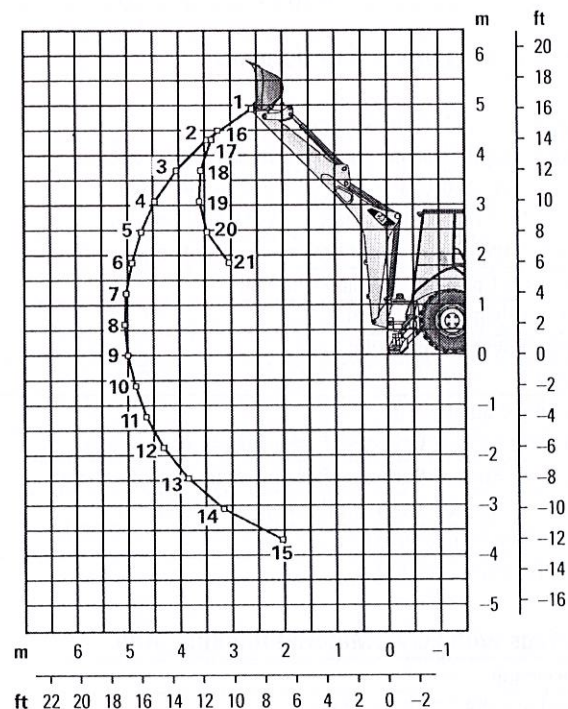
*These numbers are hydraulically limited.

430 Backhoe Loader

Backhoe Lift Capacity

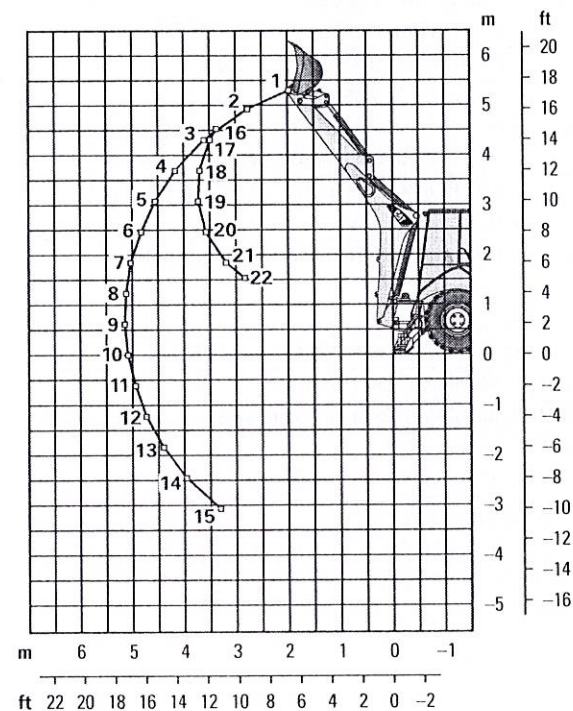
Cat 430 Standard Stick

| Boom Lifting | | | |
|---------------|--|------|-------|
| | | kg | lb |
| 1 | | 1856 | 4,093 |
| 2 | | 1951 | 4,301 |
| 3 | | 1923 | 4,240 |
| 4 | | 1867 | 4,115 |
| 5 | | 1802 | 3,973 |
| 6 | | 1737 | 3,830 |
| 7 | | 1674 | 3,692 |
| 8 | | 1615 | 3,561 |
| 9 | | 1560 | 3,439 |
| 10 | | 1509 | 3,327 |
| 11 | | 1464 | 3,227 |
| 12 | | 1424 | 3,140 |
| 13 | | 1394 | 3,073 |
| 14 | | 1382 | 3,047 |
| 15 | | 1461 | 3,222 |
| Stick Lifting | | | |
| | | kg | lb |
| 16 | | 2449 | 5,400 |
| 17 | | 2725 | 6,007 |
| 18 | | 2841 | 6,264 |
| 19 | | 2803 | 6,179 |
| 20 | | 2961 | 6,529 |
| 21 | | 3487 | 7,688 |



Cat 430 Extendible Stick – Retracted

| Boom Lifting | | | |
|---------------|--|------|-------|
| | | kg | lb |
| 1 | | 1296 | 2,858 |
| 2 | | 1601 | 3,530 |
| 3 | | 1677 | 3,696 |
| 4 | | 1651 | 3,640 |
| 5 | | 1599 | 3,526 |
| 6 | | 1539 | 3,393 |
| 7 | | 1478 | 3,258 |
| 8 | | 1418 | 3,126 |
| 9 | | 1361 | 3,000 |
| 10 | | 1307 | 2,882 |
| 11 | | 1258 | 2,773 |
| 12 | | 1213 | 2,673 |
| 13 | | 1173 | 2,586 |
| 14 | | 1141 | 2,515 |
| 15 | | 1123 | 2,477 |
| Stick Lifting | | | |
| | | kg | lb |
| 16 | | 2153 | 4,746 |
| 17 | | 2443 | 5,387 |
| 18 | | 2549 | 5,620 |
| 19 | | 2514 | 5,542 |
| 20 | | 2648 | 5,839 |
| 21 | | 3078 | 6,785 |
| 22 | | 3590 | 7,914 |



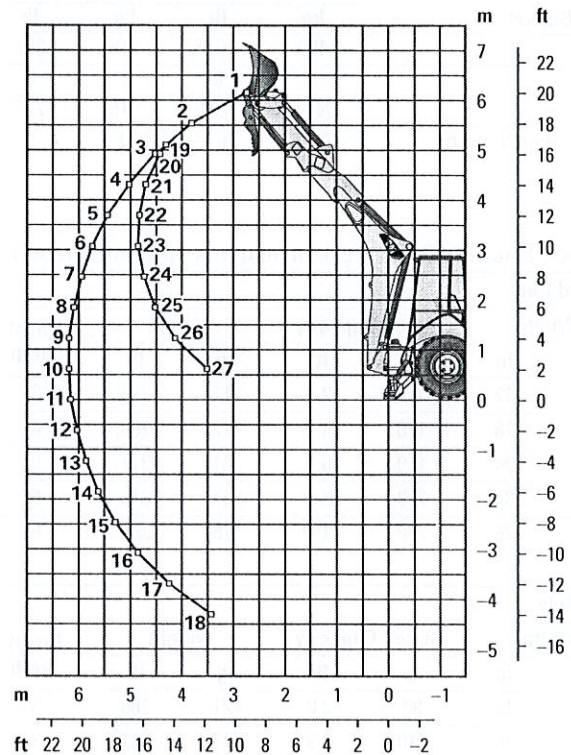
Lift capacities are over-end values calculated according to SAE J31. Values are 87% of the maximum lift force available.
Machine equipped with AWD, OROPS, 0.96 m³ (1.25 yd³) general purpose bucket and 460 kg (1,015 lb) counterweight.
Extendible stick includes 460 kg (1,015 lb) counterweight.

430 Backhoe Loader

Backhoe Lift Capacity

Cat 430 Extendible Stick – Extended

| Boom Lifting | | |
|---------------|------|-------|
| | kg | lb |
| 1 | 739 | 1,628 |
| 2 | 1050 | 2,314 |
| 3 | 1135 | 2,503 |
| 4 | 1158 | 2,553 |
| 5 | 1154 | 2,545 |
| 6 | 1138 | 2,509 |
| 7 | 1115 | 2,458 |
| 8 | 1089 | 2,402 |
| 9 | 1062 | 2,342 |
| 10 | 1036 | 2,283 |
| 11 | 1010 | 2,226 |
| 12 | 986 | 2,173 |
| 13 | 964 | 2,124 |
| 14 | 945 | 2,083 |
| 15 | 931 | 2,052 |
| 16 | 924 | 2,037 |
| 17 | 930 | 2,051 |
| 18 | 971 | 2,140 |
| Stick Lifting | | |
| 19 | 1187 | 2,618 |
| 20 | 1306 | 2,880 |
| 21 | 1578 | 3,479 |
| 22 | 1744 | 3,845 |
| 23 | 1730 | 3,814 |
| 24 | 1774 | 3,911 |
| 25 | 1891 | 4,169 |
| 26 | 2130 | 4,697 |
| 27 | 2671 | 5,888 |



Lift capacities are over-end values calculated according to SAE J31. Values are 87% of the maximum lift force available.
 Machine equipped with AWD, OROPS, 0.96 m³ (1.25 yd³) general purpose bucket and 460 kg (1,015 lb) counterweight.
 Extendible stick includes 460 kg (1,015 lb) counterweight.

430 Backhoe Loader

Counterweights (Minimum Counterweight Recommendations)

| Standard Stick Loader Bucket | Pin-On Bucket | | Loader QC | |
|---------------------------------|---------------|-------|-----------|-----|
| | kg | lb | kg | lb |
| GP | 460 | 1,015 | 115 | 255 |
| MP | 0 | 0 | 0 | 0 |
| Forks | N/A | N/A | 115 | 255 |
| Material Handling Arm | N/A | N/A | 0 | 0 |

| Extendible Stick Loader Bucket | Pin-On Bucket | | Loader QC | |
|-----------------------------------|---------------|-------|-----------|-----|
| | kg | lb | kg | lb |
| GP | 460 | 1,015 | 240 | 530 |
| MP | 240 | 530 | 0 | 0 |
| Forks | N/A | N/A | 240 | 530 |
| Material Handling Arm | N/A | N/A | 240 | 530 |

Backhoe Buckets (With weld on adapters and pin-on teeth)

| Standard Duty | | | | | | |
|---------------|----|----------------|------|--------|-----|-----------------|
| Width | | Rated Capacity | | Weight | | No. of Teeth |
| mm | in | L | ft³ | kg | lb | |
| 305 | 12 | 80 | 2.8 | 111 | 245 | 3 |
| 457 | 18 | 120 | 4.2 | 122 | 268 | 4 |
| 610 | 24 | 180 | 6.4 | 141 | 311 | 5 |
| 762 | 30 | 230 | 8.1 | 157 | 345 | 5 |
| 914 | 36 | 290 | 10.2 | 176 | 388 | 6 |

| Heavy Duty | | | | | | |
|------------|----|----------------|------|--------|-----|-----------------|
| Width | | Rated Capacity | | Weight | | No. of Teeth |
| mm | in | L | ft³ | kg | lb | |
| 305 | 12 | 80 | 2.8 | 121 | 266 | 3 |
| 406 | 16 | 110 | 3.9 | 128 | 282 | 3 |
| 457 | 18 | 120 | 4.2 | 135 | 299 | 4 |
| 610 | 24 | 180 | 6.4 | 160 | 353 | 5 |
| 762 | 30 | 230 | 8.1 | 177 | 391 | 5 |
| 914 | 36 | 290 | 10.2 | 201 | 443 | 6 |

| Soil Excavation | | | | | | |
|-----------------|----|----------------|------|--------|-----|-----------------|
| Width | | Rated Capacity | | Weight | | No. of Teeth |
| mm | in | L | ft³ | kg | lb | |
| 457 | 18 | 180 | 6.4 | 155 | 341 | 4 |
| 610 | 24 | 240 | 8.5 | 182 | 402 | 5 |
| 762 | 30 | 320 | 11.3 | 206 | 454 | 5 |
| 914 | 36 | 380 | 13.4 | 233 | 513 | 6 |

| Rock | | | | | | |
|-------|----|----------------|------|--------|-----|-----------------|
| Width | | Rated Capacity | | Weight | | No. of Teeth |
| mm | in | L | ft³ | kg | lb | |
| 305 | 12 | 70 | 2.5 | 127 | 279 | 3 |
| 457 | 18 | 130 | 4.6 | 146 | 322 | 4 |
| 610 | 24 | 200 | 7.1 | 174 | 384 | 5 |
| 762 | 30 | 270 | 9.5 | 197 | 434 | 5 |
| 914 | 36 | 330 | 11.7 | 224 | 493 | 6 |

| Coral | | | | | | |
|-------|----|----------------|-----|--------|-----|-----------------|
| Width | | Rated Capacity | | Weight | | No. of Teeth |
| mm | in | L | ft³ | kg | lb | |
| 305 | 12 | 60 | 2.1 | 134 | 295 | 4 |
| 457 | 18 | 100 | 3.5 | 155 | 341 | 6 |
| 610 | 24 | 140 | 4.9 | 182 | 402 | 8 |
| 762 | 30 | 190 | 6.7 | 210 | 463 | 10 |

STANDARD EQUIPMENT

- Adjustable auxiliary controls, backhoe loader
- Air cleaner
- Alarm, back-up
- Audible system fault alarm
- Automatic Engine Speed Control (AESC)
- Battery, maintenance-free, 850 CCA
- Battery disconnect switch
- Boom transport lock
- Brace, lift cylinder
- Brake, parking, Spring Applied Hydraulically Released (SAHR)
- Brakes, hydraulically boosted, oil disc, dual pedals, interlocking
- Bucket level indicator
- Canopy, ROPS/FOPS
- Cat cushion swing system
- Coat restraint
- Coolant/antifreeze, extended life
- Dome light (cab only)
- Diagnostic port for engine, machine and gauge cluster Electronic Control Modules
- Differential lock, loader joystick
- Drink holders, two
- Engine, Cat C3.6 ACERT (Direct Injection Turbocharged), meets Tier 4 Final/Stage V emission standards, Selective Catalytic Reduction, Diesel Oxidation Catalyst (DOC)
- Engine enclosure, sound suppression, removable side panels
- Face seals, O-ring
- Fan, suction and guard
- Fast reversing shuttle, all gears
- Fenders, rear
- Filters, spin-on: fuel, engine oil, transmission oil, water separator
- Filters, bowl and cartridge: hydraulic fluid
- Flashing hazards/signal lights
- Floor mat
- Fuel tank, fully enclosed
- Four wheel drive
- Four wheel drive shaft guard
- Fully hinged front grill for cooling package cleaning access
- Gauge cluster: coolant temperature, fuel level, torque converter temperature, DEF level
- Ground level fuel fill and DEF fill
- Halogen lights, working (2 front, 2 rear)
- High ambient cooling package
- Hood lock, inside cab
- Hydraulic hose, XT™
- Hydraulic oil cooler
- Hydraulic oil level sight gauge
- Hydraulic valves, loader 2 function
- Hydraulic valves, backhoe 4 function
- Hydraulics, load sensing with variable displacement piston pump
- Indicator lights: wait to start, water in fuel, engine warning, warning lamp, emissions module malfunction, low battery/charging system warning, high hydraulic oil temperature: LCD warnings: engine oil pressure, machine locked, service due, air filter blocked, high coolant temperature, auto idle shutdown, high torque converter temperature, hydraulic filter bypass
- Instrument panel lights
- Joystick controls: pilot operated, excavator-style with pattern changer
- Key start/stop system
- LCD operator display with soft key controls: engine speed, hour meter, gear/direction, battery voltage, hydraulic oil temperature, torque converter temperature, coolant temperature, trip totals (fuel and hours), lifetime totals (fuel and hours), operator settings (units, brightness, programmable hoe auxiliary flow), service mode diagnostics, maintenance intervals, ECM/system info
- Loader, self-leveling, return-to-dig and transmission disconnect switch
- Loader, single tilt
- Mirror, interior, rearview
- One-touch low idle
- Open circuit breather
- Pattern changer, in cab
- Power receptacle, 5 volt USB, 1 internal
- Power receptacle, 12 volt, 2 internal, 1 external
- Power steering, hydrostatic
- Product Link™, satellite, network manager
- Product Link, cellular, network manager
- Seat belt, retractable, 51 mm (2 in)
- Socket, two roof
- Stabilizer shoes, street
- Steering knob
- Seat, air suspension, vinyl cover, with armrest
- Stabilizers, EH Control, Auto-UP
- Starting system, glow plugs
- Steering column, tilting, telescopic
- Storage compartment, lockable
- Storage tray
- Stop and tail lights
- Swing transport lock
- Tires
- Toolbox, external, lockable
- Torque converter
- Throttle, hand and foot, electronic
- Transmission, 4 speed, powershift
- Transmission neutralizer switch
- Transport tie-downs
- Vandalism locks, four
- Warning horn, electric

430 Backhoe Loader

OPTIONAL EQUIPMENT

- Auxiliary hydraulics, loader, adjustable flow
- Auxiliary hydraulics, rear, adjustable flow
- Battery, additional, 850 CCA
- Cab, deluxe
- Cold weather fuel (-30° C/-22° F)
- Cold weather package, including additional battery, engine block heater, radiator antifreeze, cold weather fuel (-30° C/-22° F) and mounting for an ether bottle
- Counterweights, 115 kg (255 lb), 240 kg (530 lb) or 460 kg (1,015 lb)
- Fenders, front with integral steps
- Guard, boom protection plate
- Guard, stabilizer, rock
- Hydraulic valves, loader with auxiliary thumb control (3rd valve for MP or Quick Coupler)
- Hydraulic valves, backhoe (5th and 6th function)
- Hydraulic lines, combined function auxiliary
- LED lights, working (2 front, 2 rear)
- Quick Coupler, hydraulic, dual lock
- Quick Coupler, manual, dual lock
- Quick Coupler, manual, pin lock
- Radio and CD player, Bluetooth®
- Ride Control
- Rotating beacon, magnetic mount
- Seat, air suspension, fabric with armrest
- Seat, air suspension, fabric with armrest, heated
- Seat belt, retractable, 75 mm (3 in)
- Security system, Bluetooth
- Security system, operator display
- Side mirrors, cab, external
- Single Tilt Loader Coupler, Integrated Tool Carrier (IT) Interface
- Stabilizer pads, reversible
- Stick, extendible
- Transmission, AutoShift with lock-up torque converter, 6 speed
- Vandalism protection, gauge cover
- Work Tool Attachments such as buckets, forks, material handling arms, augers, hammers, brooms, cold planers and vibratory plate compactors. See your Cat dealer for more information.

430 Backhoe Loader

For more complete information on Cat products, dealer services, and industry solutions, visit us on the web at www.cat.com

© 2020 Caterpillar
All rights reserved

Materials and specifications are subject to change without notice. Featured machines in photos may include additional equipment. See your Cat dealer for available options.

CAT, CATERPILLAR, LET'S DO THE WORK, their respective logos, "Caterpillar Corporate Yellow," the "Power Edge" and Cat "Modern Hex" trade dress as well as corporate and product identity used herein, are trademarks of Caterpillar and may not be used without permission.

AEHQ8245-01 (06-2020)
Replaces AEHQ8245
Build Number: 07A
(North America)



430F2/430F2 IT

Backhoe Loaders



Engine

| | | |
|-----------------------------|------------------|--------|
| Engine Model | Cat® C4.4 ACERT™ | |
| Rated Net Power – SAE J1349 | 80 kW | 108 hp |
| Rated Net Power – ISO 9249 | 81 kW | 109 hp |

Weights

| | | |
|--|-----------|-----------|
| Operating Weight – Minimum | 7775 kg | 17,141 lb |
| Operating Weight – Maximum (ROPS Capacity) | 11 000 kg | 24,251 lb |

Backhoe

| | | |
|------------------------------|---------|-------|
| Dig Depth – Standard | 4686 mm | 15'4" |
| Dig Depth – E-Stick Extended | 5935 mm | 19'6" |

Features

All New Operator Station

Built with the operator in mind, the new F2 Backhoe Loader cab provides additional machine control at the operator's fingertips, with differential lock and auxiliary functions on the loader joystick. Adjustable steering column as well as adjustable seat and hoe pod controls provide additional operator comfort.

Industry Leading Hydraulic Technology

Electronically controlled load sensing piston pump provides optimum response for loader and hoe productivity. New programmable auxiliary flow allows the machine to work more efficiently with work tool attachments.

Economy Mode

New technology allows the F2 Backhoe Loader to save fuel while maintaining performance in applications such as trenching, lifting and truck loading. Zero reduction in performance means increased efficiency on the job site.

Greater Versatility

Quick and easy attachment changing provides increased versatility and the ability to match the correct tool to the job application. The hydraulic backhoe coupler allows for a tool change without exiting the operation station. The loader hydraulic coupler, standard on the Integrated Toolcarrier (IT) Backhoe Loader, provides additional options for loader applications.

Superior Power and Performance

Industry leading structural design and hydraulics mean greater lifting power and breakout forces. Machine aggressiveness delivers outstanding productivity in the toughest applications.

Contents

| | |
|--------------------------|----|
| Operator Station..... | 4 |
| Power Train..... | 6 |
| Advanced Hydraulics..... | 7 |
| Backhoe Performance..... | 8 |
| Loader Performance..... | 8 |
| Work Tools..... | 9 |
| Serviceability..... | 10 |
| Customer Support..... | 10 |
| Specifications..... | 11 |
| Standard Equipment..... | 23 |
| Optional Equipment..... | 24 |
| Notes..... | 25 |

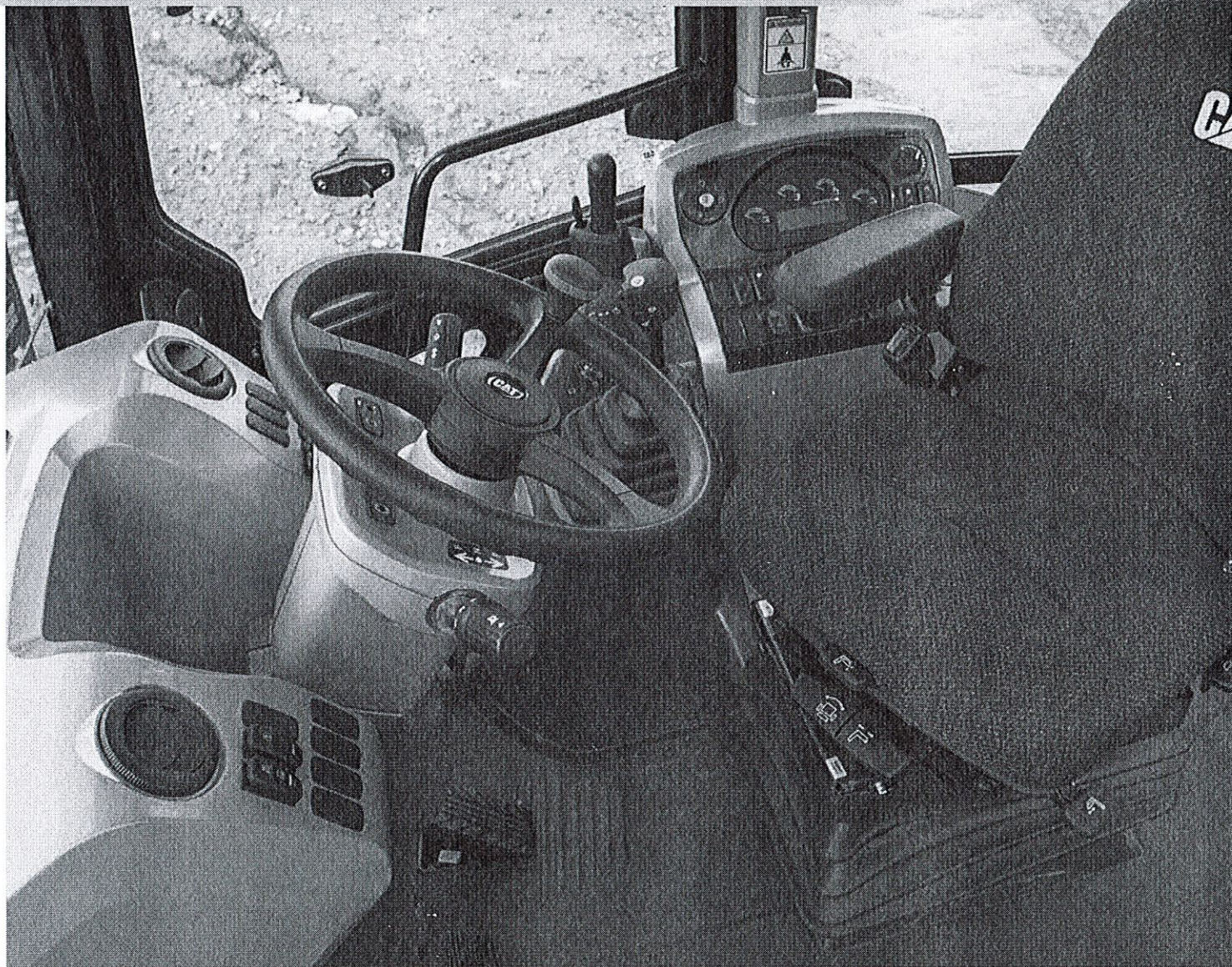




Experience the Backhoe Loader designed around customer feedback. The Cat 430F2 Backhoe Loader puts all the machine controls at the operator's fingertips. Operate all auxiliary controls with thumb rollers. Move from job site to job site quickly and smoothly with the additional 6th gear on the autoshift transmission and optional lock-up torque converter.

Operator Station

A cab designed for maximum comfort and productivity.



Joystick Controls

Cat Backhoe Loader joysticks are economically designed to provide precise control with low effort. Loader control levers on both the Single Tilt and Integrated Toolcarrier models offer a thumb roller for any 3rd function auxiliary. The differential lock control is newly located on the loader control to bring controllability to the operator's fingertips. New on the IT model is the forward, neutral, reverse control switch.



Unmatched Comfort

The ergonomic, automotive style operator station helps you work comfortably and productively all day long. Choose the configuration that meets your needs – Canopy, Cab Deluxe or Cab Deluxe with Air Conditioning. Other features include:

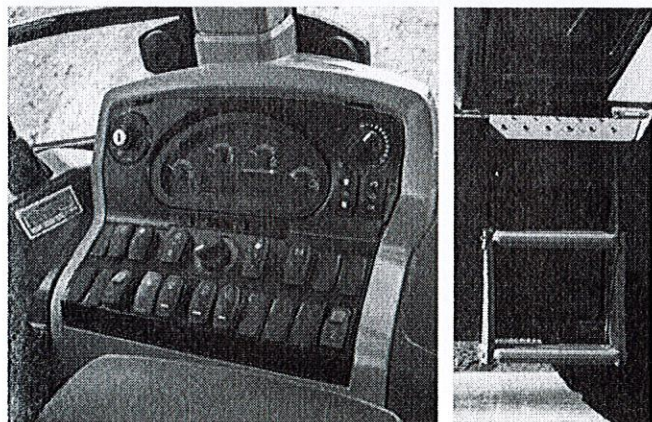
- Adjustable air suspension seat
- Tilt and telescoping steering column
- Excellent visibility over hood and up to bucket dump
- Pantograph windshield wiper
- Large front windshield screen
- Large LCD gauge cluster screen
- Ample legroom
- Optional heated seat
- Differential lock button on loader lever
- Large opening windows
- Solid roof cab
- LED brake lights

Ride Control

The optional Ride Control System smoothes the ride in all conditions, including load and carry, highway roading or simply moving around the job site. This results in increased operator comfort and improved material retention and facilitates a reduction in operator fatigue.

Pattern Selector

The pattern selector switch, located in the cab, lets you change from an excavator to a backhoe control pattern simply by pressing a button. This lets you use the pattern you are most comfortable with so you can be more productive.



Premium Gauge Cluster

Bright and large LCD screen makes it easy to monitor machine operation and settings. LED indicator lights and audible alarms allow the machine to clearly communicate with the operator.

Safety Getting in and out of the Cab

New longer grab handles and ergonomic step placement makes it easy to maintain three points of contact when getting in and out of the cab.



Power Train

Always built for performance, power and efficiency.

Cat Engine

The Cat C4.4 ACERT engine operates quietly while delivering performance and durability. The engine meets U.S. EPA Tier 4 Final emission standards. Engine features include:

- Selective catalytic reduction
- Diesel oxidation catalyst
- Diesel exhaust fluid with system purge
- Limited operator interaction

Transmission

The standard power shuttle transmission provides four speeds forward and reverse. Hydraulically shifted clutches allow on-the-go direction and travel speed shifts. The optional auto-shift transmission matches gear with grade and load conditions. Now with six forward and reverse speeds, the machine can reach top speeds smoothly and quickly.

- The new optional lock-up torque converter, offered on the autoshift transmission, improves fuel efficiency up to 20% over the standard six gear autoshift. The lock-up torque converter also improves roading for long distances and with uphill climbs.
- Hydraulic proportional control valves deliver smooth speed and directional shifts.
- Standard Four Wheel Drive improves mobility and loader performance in poor underfoot conditions and can be activated on-the-go.
- Maximum roading speed of 40 km/h (25 mph) improves travel time between job sites.

Brake Mode Selector

Brake mode selector switch is standard on the 430F2 and has three positions: two wheel drive, two wheel drive with all wheel braking and four wheel drive. Two wheel drive with all wheel braking provides better tire life while roading and engages the front axle when brakes are applied for improved braking performance.

Advanced Hydraulics

Matching system power to job site demands.



Load Sensing Hydraulics

Closed center hydraulic system matches pressure and flow to application demand. Whether you're in full trenching mode or digging around delicate services, you remain in control. In applications such as production trenching where speed is important, the system will provide the flow needed to get the job done quickly and efficiently. The load sensing hydraulic system provides:

- Better fuel efficiency
- Electronically controlled
- Quieter operation
- Reduced component wear
- Cooler hydraulic temperatures
- Full forces at any engine speed

Flow Sharing Valves

Specifically tuned hydraulic valves allow for the multifunction of hydraulic components, without machine manipulation. Hydraulic fluid is shared between implements so that operation isn't interrupted.

Hydraulic Lines

Combination two way and one way flow hydraulic lines add versatility to the machine. By simply changing the lever position, the machine can efficiently run either style hydro mechanical tool.

Economy Mode

Cat Backhoe Loaders are able to reduce engine speed to 1,900 rpm while maintaining superior hydraulic power and performance.



Backhoe Performance

Superior digging forces.

Loader Performance

Powerful front loader.

Front loader arms deliver more reach, dump height and breakout. Choose the loader linkage that suits your application:

Powerful Single Tilt Loader Linkage

- Delivers strong lift and breakout forces for a solid performance in backfilling and truck loading applications with pin-on buckets.
- Optional third function hydraulics are now operated by an ergonomically designed thumb roller.
- The operator can now engage the differential lock with a press of a button on the loader lever for added machine control.

Integrated Toolcarrier (IT) loader linkage (optional) provides high breakout forces with parallel lift for efficient loading and material handling:

- The versatile integrated toolcarrier comes with a standard hydraulic quick coupler and can use a wide range of Cat Work Tools for a variety of applications.
- The single lever IT loader control provides fine modulation of hydraulic work tools. A thumb roller operates auxiliary hydraulic functions on work tools such as multi purpose buckets, brooms and other attachments.
- The IT loader lever provides additional machine control by offering the Forward, Neutral and Reverse control switch at the operator's fingertips.

Boom

The excavator-style boom is built for optimum performance and durability. The curved design provides added clearance when digging over obstacles or loading trucks. The narrow boom enhances the viewing area to the bucket and the trench throughout the operating range. More robust swing casting and double clevis design improves durability and reliability.

Stick

Serrated edges on the stick provide improved material clamping for clearing and demolition applications. The optional extendible stick (E-stick) increases reach and dig depth by approximately 1.2 m (4 ft).

Programmable Auxiliary Flow Control

- Three auxiliary settings for two auxiliary functions
- Accessed through the gauge cluster, operators can match the hydraulic flow of the machine to a work tool attachment

Thumbs

Thumb mounting provisions are standard on every Cat Backhoe Loader for added machine versatility. Cat hydraulic thumbs are available for even greater versatility. Mechanical thumbs are also available through your Cat dealer.





Work Tools

Do more jobs with one machine.

Backhoe Work Tools

Increase the versatility of your machine with the large selection of backhoe attachments:

- Buckets – Standard Duty, Heavy Duty, Heavy Duty Rock, Soil Excavation, Coral and Ditch Cleaning
- Cold Planers
- Hammers
- Augers
- Rippers
- Thumbs (mechanical and hydraulic)
- Vibratory Plate Compactors
- Quick Couplers

Loader Work Tools

A wide range of loader attachments is available including:

- Buckets – General Purpose, Multi Purpose, Side Dump and Light Material
- Angle Blades
- Brooms
- Rakes
- Forks
- Material Handling Arms
- Snow Plows



IT Loader Quick Coupler

The quick coupler allows fast and easy connection to work tools. Mechanical work tools can be changed in less than 30 seconds from the comfort of the operator station.

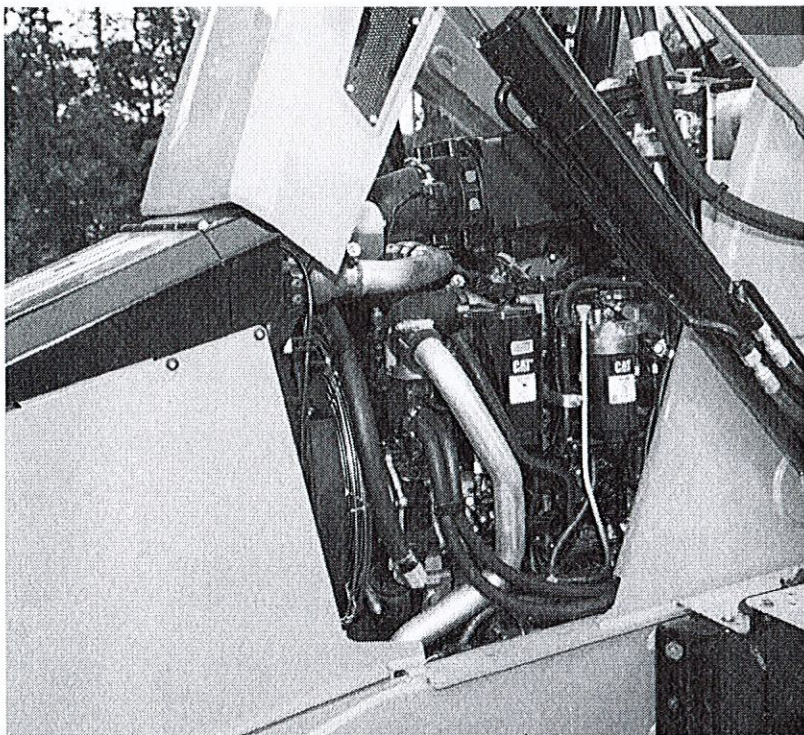


Backhoe Quick Coupler

Manual or hydraulic backhoe couplers make rear tool exchange quick and easy. New Cat dual lock coupler has a self-adjusting wedge design to ensure a tight fit. It also features a safety lock that automatically engages.

Serviceability

Easy maintenance helps keep your machine working.



Minimize Your Downtime

Convenient service features make maintenance easy, reducing your downtime:

- Hinged cooling pack provides easy access
- Tilt up hood provides easy, convenient access to all engine check points
- Engine side panels remove easily without the use of tools
- Cat Product Link™ system (optional) provides remote reporting of machine location and operating system parameters

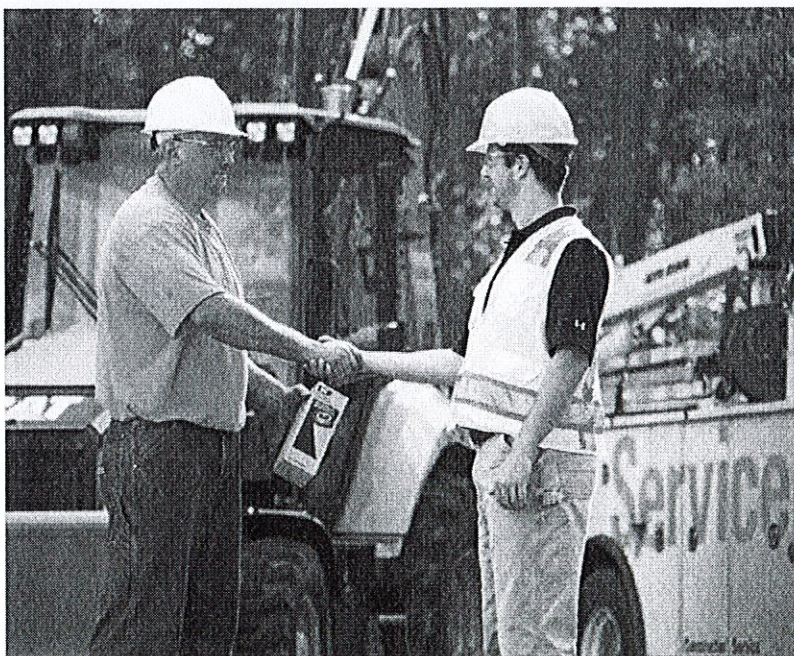
Customer Support

Unmatched support makes the difference.

Renowned Dealer Support

From helping you choose the right machine to knowledgeable ongoing support, Cat dealers provide the best in sales and service.

- Preventive maintenance programs and guaranteed maintenance contracts
- Best-in-class parts availability
- Operator training to help boost your profits
- Genuine Cat Remanufactured parts



430F2/430F2 IT Specifications

Engine

| | | |
|---|----------------|---------------------|
| Engine Model | Cat C4.4 ACERT | |
| Gross Power | | |
| SAE J1995 | 87 kW | 117 hp |
| ISO 14396 | 86 kW | 115 hp |
| Rated Net Power @ 2,200 rpm | | |
| SAE J1349 | 80 kW | 108 hp |
| ISO 9249 | 81 kW | 109 hp |
| EEC 80/1269 | 81 kW | 109 hp |
| Net Peak Power @ 1,800 rpm | | |
| SAE J1349 | 82 kW | 110 hp |
| ISO 9249 | 83 kW | 111 hp |
| EEC 80/1269 | 83 kW | 111 hp |
| Bore | 105 mm | 4.13 in |
| Stroke | 127 mm | 5 in |
| Displacement | 4.4 L | 268 in ³ |
| Net Torque Rise @ 1,400 rpm – SAE J1349 | 39% | |
| Net Peak Torque @ 1,400 rpm | 488 N·m | 360 lbf·ft |

- Engine meets Tier 4 Final emission standards.
- Net power ratings apply at 2,200 rpm when tested under the specified conditions for the specified standard.
- Net power advertised is the power available at the flywheel when the engine is equipped with fan, air cleaner, muffler and alternator.
- Based on standard air conditions of 25° C (77° F) and 99 kPa (29.32 in) in dry barometer.
- Used 35° API gravity fuel having an LHV of 42 780 kJ/kg (18,390 BTU/lb) when used at 30° C (89° F) (reference a fuel density of 838.9 g/L [7.001 lb/gal]).
- No derating required up to 3000 m (9,843 ft).
- Net torque rise meets SAE J1349.
- Net peak power ratings apply at conditions specified above.

Transmission

Power Shuttle Transmission – Standard

| | | |
|---------------|----------|---------|
| Forward – 1st | 5.4 km/h | 3.4 mph |
| Forward – 2nd | 9 km/h | 5.6 mph |
| Forward – 3rd | 21 km/h | 13 mph |
| Forward – 4th | 40 km/h | 25 mph |
| Reverse – 1st | 5.4 km/h | 3.4 mph |
| Reverse – 2nd | 9 km/h | 5.6 mph |
| Reverse – 3rd | 21 km/h | 13 mph |
| Reverse – 4th | 40 km/h | 25 mph |

AutoShift Transmission – Optional

| | | |
|---------------|----------|---------|
| Forward – 1st | 5.8 km/h | 3.6 mph |
| Forward – 2nd | 9.3 km/h | 5.7 mph |
| Forward – 3rd | 12 km/h | 7 mph |
| Forward – 4th | 19 km/h | 12 mph |
| Forward – 5th | 26 km/h | 16 mph |
| Forward – 6th | 40 km/h | 25 mph |
| Reverse – 1st | 5.8 km/h | 3.6 mph |
| Reverse – 2nd | 12 km/h | 7.6 mph |
| Reverse – 3rd | 28 km/h | 17 mph |

AutoShift Transmission with Lock-Up Torque Converter – Optional

| | | |
|-------------------|----------|---------|
| Forward – 1st | 5.8 km/h | 3.6 mph |
| Forward – 2nd | 9.3 km/h | 5.7 mph |
| Forward – 3rd | 12 km/h | 7 mph |
| Forward – 4th | 19 km/h | 12 mph |
| Forward – 5th | 23 km/h | 14 mph |
| Forward – 5th LUC | 25 km/h | 15 mph |
| Forward – 6th | 40 km/h | 25 mph |
| Forward – 6th LUC | 40 km/h | 25 mph |
| Reverse – 1st | 5.8 km/h | 3.6 mph |
| Reverse – 2nd | 12 km/h | 7.6 mph |
| Reverse – 3rd | 28 km/h | 17 mph |

- AutoShift automatically shifts between second gear and highest selected gear.
- Forward/reverse electric power shuttle is controlled by a conveniently placed, hand operated lever that provides instant direction changes between forward and reverse through power hydraulic clutches.
- Torque converter free-wheel clutch allows the converter stator to free-wheel during high speed, low torque conditions such as roading.
- Single-stage, 2.63:1 stall ratio.
- Travel speeds of two wheel drive backhoe loader at full throttle when equipped with 19.5 × 24 rear tires.

430F2/430F2 IT Specifications

Weights*

| | | |
|--|-----------|-----------|
| Operating Weight – Minimum | 8330 kg | 18,364 lb |
| Operating Weight – Maximum (ROPS Capacity) | 11 000 kg | 24,251 lb |
| Cab, ROPS/FOPS | 163 kg | 359 lb |
| AutoShift Transmission | 238 kg | 525 lb |
| Ride Control | 14 kg | 31 lb |
| Air Conditioning | 42 kg | 93 lb |
| MP Bucket (0.96 m³/1.25 yd³) (no forks or teeth) | 745 kg | 1,642 lb |
| Loader, IT with Quick Coupler | 317 kg | 699 lb |
| Extendible Stick | 305 kg | 673 lb |
| Counterweights (Option 1) | 115 kg | 255 lb |
| Counterweights (Option 2) | 240 kg | 530 lb |
| Counterweights (Option 3) | 460 kg | 1,015 lb |

* Specifications shown are for machine equipped with 1.0 m³ (1.31 yd³) general purpose loader bucket, 610 mm (24 in) heavy duty backhoe bucket, 80 kg (176 lb) operator and full fuel tank.

Steering

| | | |
|---|-------------|--------|
| Type | Front Wheel | |
| Power Steering | Hydrostatic | |
| Bore | 65 mm | 2.6 in |
| Stroke | 120 mm | 4.7 in |
| Rod Diameter | 36 mm | 1.4 in |
| Axle Oscillation | 11° | |
| Turning Circle – 4WD (inner wheel not braked) | | |
| Outside, Front Wheels | 8.18 m | 26'10" |
| Outside, Widest Loading Bucket | 10.97 m | 36'0" |

Axle Ratings

| | | |
|------------------|------------|-----------|
| Front Axle, 2WD | | |
| Static | 22 964 kg | 50,582 lb |
| Dynamic | 9186 kg | 20,233 lb |
| Front Axle, 4WD | | |
| Static | 22 964 kg | 50,582 lb |
| Dynamic | 9186 kg | 20,233 lb |
| Rear Axle | | |
| Static | 22 964 kg | 50,582 lb |
| Dynamic | 9186 kg | 20,233 lb |
| Axle Oscillation | 10 Degrees | |

• 4WD axles are pendulum mounted and permanently sealed and lubricated, requiring no daily maintenance. Also features double-acting steering cylinder with 52° steering angle for increased maneuverability.

Hydraulic System

| | | |
|---------------------------|-----------------------------|------------|
| Type | Closed Center | |
| Pump Type | Variable Flow, Axial Piston | |
| Pump Capacity @ 2,200 rpm | 163 L/min | 43 gal/min |
| System Pressure – Backhoe | 25 000 kPa | 3,600 psi |
| System Pressure – Loader | 25 000 kPa | 3,600 psi |

Service Refill Capacities

| | | |
|--------------------------------------|--------|----------|
| Cooling System with Air Conditioning | 22.5 L | 5.9 gal |
| Fuel Tank | 160 L | 42 gal |
| Diesel Exhaust Fluid* | 19 L | 5 gal |
| Engine Oil with Filter | 8.8 L | 2.3 gal |
| Transmission – Power Shuttle | | |
| 4WD | 15 L | 4 gal |
| Transmission – AutoShift | | |
| 4WD | 18 L | 4.8 gal |
| Rear Axle | 16.5 L | 4.4 gal |
| Planetaries | 1.7 L | 0.4 gal |
| Front Axle (4WD) | 11 L | 2.9 gal |
| Planetaries | 0.7 L | 0.2 gal |
| Hydraulic System | 95 L | 25.1 gal |
| Hydraulic Tank | 40 L | 10.6 gal |

* Must meet the requirements outlined in ISO 22241.
• Requires ultra-low sulfur fuel <= 15 ppm fuel sulfur.

Tires

Choices listed as combination of front/rear tires:
• Front: 12.5/80-18 (12 ply) 1-3; Rear: 19.5L-24 (12 ply) ATU
• Front: 12.5/80-18 NHS (12 ply) 1-3; Rear: 21L-24 (16 ply) R4 ATU
• Front: 340/80R18; Rear: 19.5L-24 (12 ply) R4 ATU
• Front: 340/80R18; Rear: 500/70R24 RT

Standards

| | |
|----------------|---|
| Brakes | SAE J/ISO 3450; ISO 3450 1996 |
| Cab – ROPS | SAE J1040 MAY94; ISO 3741 1994 |
| Cab – FOPS | SAE J/ISO 3449 APR98 LEVEL II and ISO 3449: 1992 LEVEL II |
| Cab – Sound | ANSI/SAE J1166 OCT98 is 79 dB(A) |
| Exterior Sound | SAE J188 JUN86 is 76 dB(A) |

Engine Features

- Regeneration is passive and does not require any input from the operator or disrupt work.
- Three-ring pistons made of lightweight, silicon/aluminum alloy for strength and maximum thermal conductivity.
- Forged chrome/molybdenum-steel crankshaft with crankshaft with either induction hardened or nitrocarburized journals.
- Front and rear crankshaft oil seals are "lip" type Viton and PTFE designs featuring an integral dust lip.
- Heat resistant, silicone-chrome steel intake and STELLITE-faced exhaust valves provide long life.
- Cylinder block is high strength, cast iron alloy of deep skirt, monobloc design for increased strength and long life.
- Cylinder head is high strength, cast iron alloy construction with extra duty wall and deck thickness. Intake and exhaust ports are precision cast to promote optimum gas flow.
- Direct injection fuel system provides accurate fuel delivery; remote mounted electric lift pump improves serviceability.
- Dry-type axial seal air cleaner with integral precleaner, automatic dust ejection system, and filter condition indicator.
- Direct electric, 12-volt starting and charging system with 880 CCA Group 31 maintenance free battery.
- Standard glow plug starting aid system for efficient cold weather starting.
- High contact ratio/gear train, peripheral fixed isolation top cover and open deck block design reduce bare engine noise.
- Higher low end torque for better engine/machine performance.
- Engine is equipped with electric fuel priming pump.

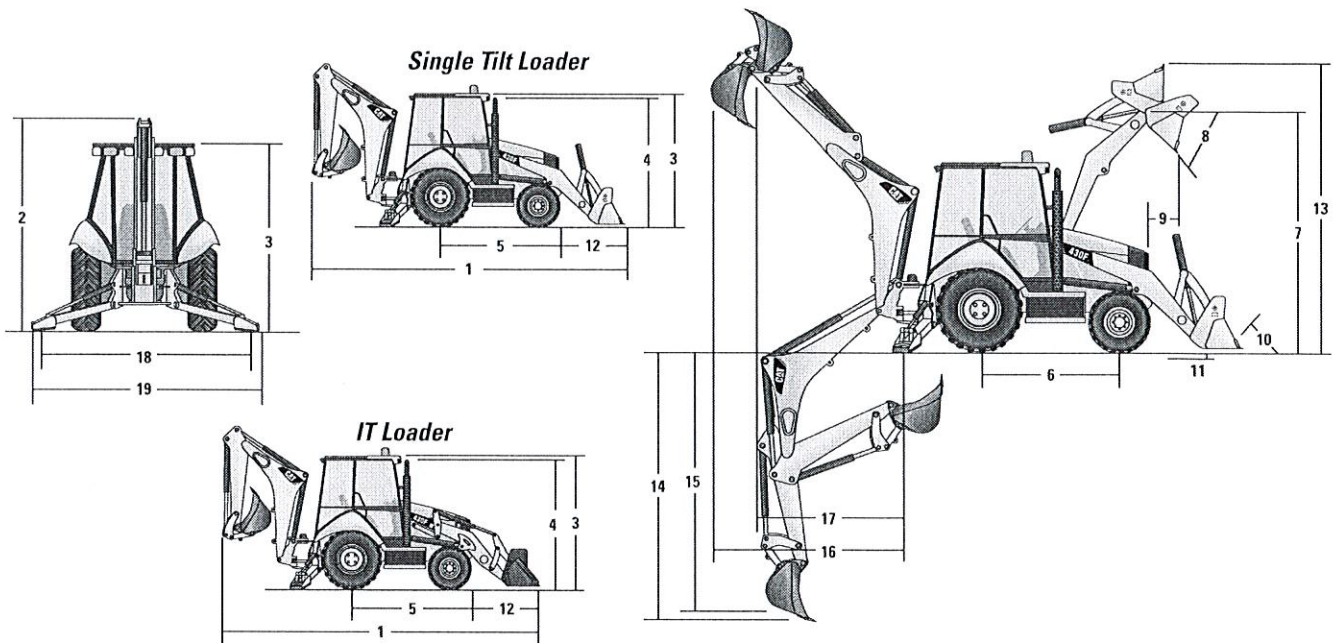
Brakes

Features:

- Brakes meet the following standards: SAE J1473 and ISO 3450 requirements.
- Self-adjusting, completely enclosed and sealed.
- Foot operated brake pedals can be interlocked for roading.
- Parking/secondary brakes are independent of the service brake system. Parking brake is mechanically applied through an adjustable hand lever located on the right console.

430F2/430F2 IT Specifications

Machine Dimensions

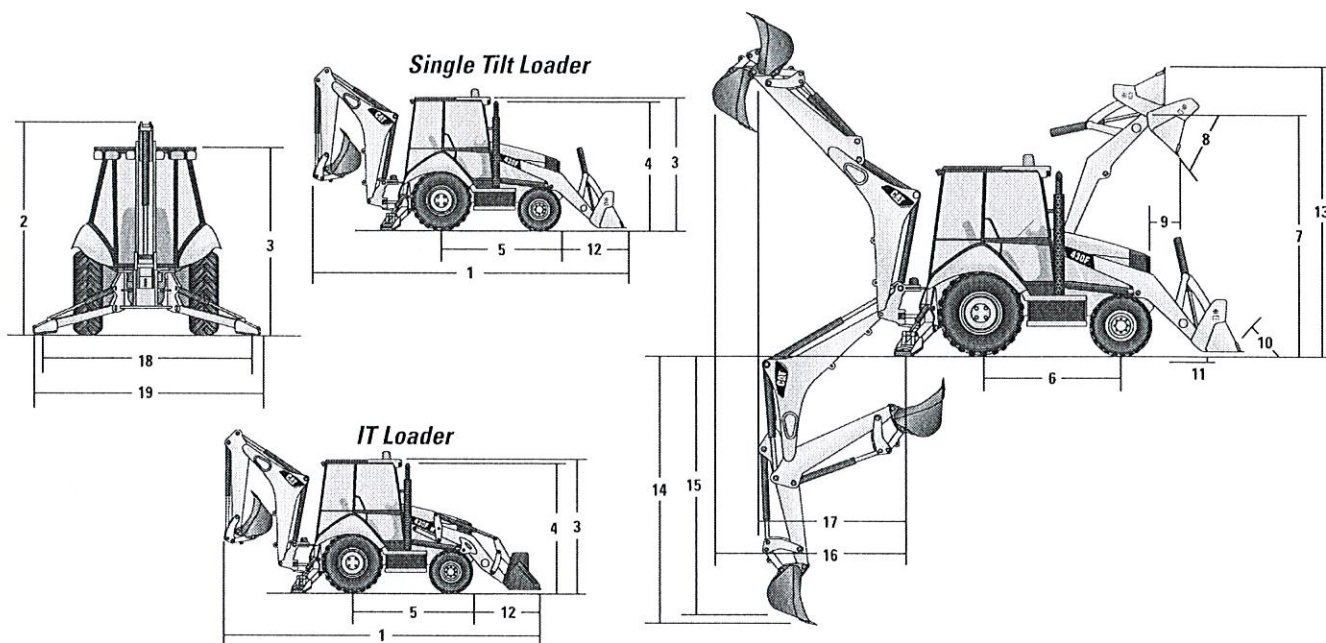


| | Single Tilt Loader | | | | | | | | | |
|---|---------------------------------------|--------|-------------------------------------|--------|--------------------------------------|--------|------------------------------------|--------|-----------------------------------|--------|
| | General Purpose (0.96 m³/1.25 yd³) | | General Purpose (1.1 m³/1.4 yd³) | | General Purpose (1.15 m³/1.5 yd³) | | Multi Purpose (1.0 m³/1.31 yd³) | | Multi Purpose (1.1 m³/1.4 yd³) | |
| 1 Overall Transport Length | 7310 mm | 24'0" | 7302 mm | 23'11" | 7302 mm | 23'11" | 7274 mm | 23'10" | 7200 mm | 23'7" |
| Overall Length (loader on ground) | 7282 mm | 23'11" | 7348 mm | 24'1" | 7348 mm | 24'1" | 7200 mm | 23'7" | 7274 mm | 23'10" |
| 2 Overall Transport Height – Standard Stick | 3577 mm | 11'9" | 3577 mm | 11'9" | 3577 mm | 11'9" | 3577 mm | 11'9" | 3577 mm | 11'9" |
| Overall Transport Height – Extendible Stick | 3631 mm | 11'11" | 3631 mm | 11'11" | 3631 mm | 11'11" | 3631 mm | 11'11" | 3631 mm | 11'11" |
| Overall Width | 2322 mm | 7'7" | 2322 mm | 7'7" | 2322 mm | 7'7" | 2322 mm | 7'7" | 2322 mm | 7'7" |
| 3 Height to Top of Cab/Canopy | 2819 mm | 9'3" | 2819 mm | 9'3" | 2819 mm | 9'3" | 2819 mm | 9'3" | 2819 mm | 9'3" |
| 4 Height to Top of Exhaust Stack | 2744 mm | 9'0" | 2744 mm | 9'0" | 2744 mm | 9'0" | 2744 mm | 9'0" | 2744 mm | 9'0" |
| Height to Loader Hinge Pin (transport) | 381 mm | 1'3" | 428 mm | 1'5" | 428 mm | 1'5" | 432 mm | 1'5" | 432 mm | 1'5" |
| Ground Clearance (minimum) | 294 mm | 1'0" | 294 mm | 1'0" | 294 mm | 1'0" | 294 mm | 1'0" | 294 mm | 1'0" |
| 5 Rear Axle Centerline to Front Grill | 2705 mm | 8'10" | 2705 mm | 8'10" | 2705 mm | 8'10" | 2705 mm | 8'10" | 2705 mm | 8'10" |
| Front Wheel Tread Gauge | 1895 mm | 6'3" | 1895 mm | 6'3" | 1895 mm | 6'3" | 1895 mm | 6'3" | 1895 mm | 6'3" |
| Rear Wheel Tread Gauge | 1714 mm | 5'7" | 1714 mm | 5'7" | 1714 mm | 5'7" | 1714 mm | 5'7" | 1714 mm | 5'7" |
| 6 Wheelbase 2WD/4WD | 2200 mm | 7'3" | 2200 mm | 7'3" | 2200 mm | 7'3" | 2200 mm | 7'3" | 2200 mm | 7'3" |

Dimensions and performance specifications shown are for machines equipped with 12.5/80-18 SGL front tires, 19.5L-24 IT525 rear tires, ROPS canopy, standard stick with 610 mm (24 in) standard duty bucket, 1.0 m³ (1.31 yd³) loader bucket and standard equipment unless otherwise specified.

430F2/430F2 IT Specifications

Machine Dimensions



| | IT Loader with Quick Coupler | | | | | |
|---|---|--------|--|--------|--|--------|
| | General Purpose (0.96 m ³ /1.25 yd ³) | | General Purpose (1.15 m ³ /1.5 yd ³) | | Multi Purpose (1.0 m ³ /1.31 yd ³) | |
| 1 Overall Transport Length | 7423 mm | 24'4" | 7428 mm | 24'4" | 7352 mm | 24'1" |
| Overall Length (loader on ground) | 7430 mm | 24'5" | 7420 mm | 24'4" | 7338 mm | 24'1" |
| 2 Overall Transport Height – Standard Stick | 3577 mm | 11'9" | 3577 mm | 11'9" | 3577 mm | 11'9" |
| Overall Transport Height – Extendible Stick | 3631 mm | 11'11" | 3631 mm | 11'11" | 3631 mm | 11'11" |
| Overall Width | 2322 mm | 7'7" | 2322 mm | 7'7" | 2322 mm | 7'7" |
| 3 Height to Top of Cab/Canopy | 2819 mm | 9'3" | 2819 mm | 9'3" | 2819 mm | 9'3" |
| 4 Height to Top of Exhaust Stack | 2744 mm | 9'0" | 2744 mm | 9'0" | 2744 mm | 9'0" |
| Height to Loader Hinge Pin (transport) | 396 mm | 1'4" | 391 mm | 1'3" | 386 mm | 1'3" |
| Ground Clearance (minimum) | 294 mm | 1'0" | 294 mm | 1'0" | 294 mm | 1'0" |
| 5 Rear Axle Centerline to Front Grill | 2705 mm | 8'10" | 2705 mm | 8'10" | 2705 mm | 8'10" |
| Front Wheel Tread Gauge | 1895 mm | 6'3" | 1895 mm | 6'3" | 1895 mm | 6'3" |
| Rear Wheel Tread Gauge | 1714 mm | 5'7" | 1714 mm | 5'7" | 1714 mm | 5'7" |
| 6 Wheelbase 2WD/AWD | 2200 mm | 7'3" | 2200 mm | 7'3" | 2200 mm | 7'3" |

Dimensions and performance specifications shown are for machines equipped with 12.5/80-18 SGL front tires, 19.5L-24 IT525 rear tires, ROPS canopy, standard stick with 610 mm (24 in) standard duty bucket, 1.0 m³ (1.31 yd³) loader bucket and standard equipment unless otherwise specified.

430F2/430F2 IT Specifications

Loader Bucket Dimensions and Performance

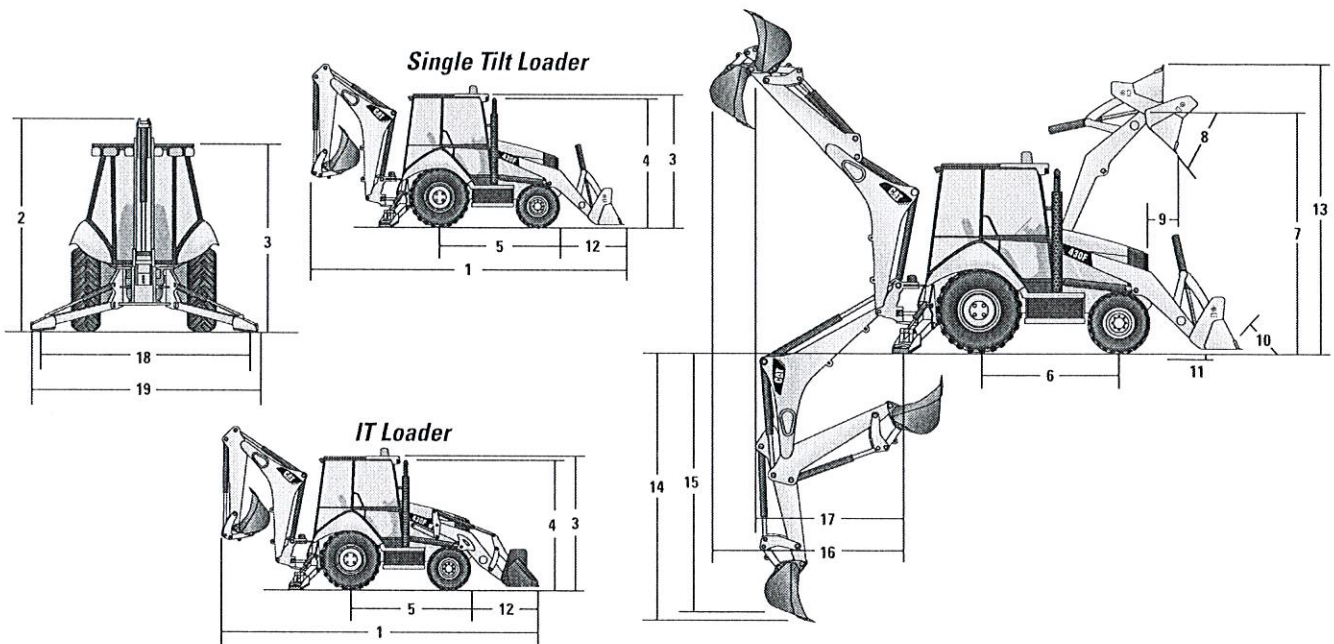
| | Single Tilt Loader | | | | | | | | | |
|---|---------------------------------------|------------|-------------------------------------|------------|--------------------------------------|------------|------------------------------------|------------|-----------------------------------|------------|
| | General Purpose (0.96 m³/1.25 yd³) | | General Purpose (1.1 m³/1.4 yd³) | | General Purpose (1.15 m³/1.5 yd³) | | Multi Purpose (1.0 m³/1.31 yd³) | | Multi Purpose (1.1 m³/1.4 yd³) | |
| Capacity (SAE rated) | 0.96 m³ | 1.25 yd³ | 1.1 m³ | 1.4 yd³ | 1.15 m³ | 1.5 yd³ | 1.0 m³ | 1.31 yd³ | 1.1 m³ | 1.4 yd³ |
| Overall Bucket Width | 2262 mm | 89" | 2262 mm | 89" | 2406 mm | 95" | 2279 mm | 90" | 2425 mm | 95" |
| Lift Capacity at Maximum Height | 3282 kg | 7,237 lb | 3216 kg | 7,090 lb | 3196 kg | 7,046 lb | 3097 kg | 6,828 lb | 3068 kg | 6,764 lb |
| Lift Breakout Force | 49 809 N | 11,197 lbf | 49 275 N | 11,077 lbf | 49 099 N | 11,037 lbf | 49 019 N | 11,020 lbf | 48 771 N | 10,964 lbf |
| Tilt Breakout Force | 50 190 N | 11,283 lbf | 51 236 N | 11,518 lbf | 51 128 N | 11,494 lbf | 57 555 N | 12,938 lbf | 57 408 N | 12,905 lbf |
| 7 Maximum Hinge Pin Height | 3474 mm | 11'5" | 3474 mm | 11'5" | 3474 mm | 11'5" | 3474 mm | 11'5" | 3474 mm | 11'5" |
| 8 Dump Angle at Full Height | 44° | | 44° | | 44° | | 44° | | 44° | |
| Dump Height at Maximum Angle | 2746 mm | 9'0" | 2723 mm | 8'11" | 2723 mm | 8'11" | 2798 mm | 9'2" | 2798 mm | 9'2" |
| 9 Dump Reach at Maximum Angle | 808 mm | 2'8" | 773 mm | 2'6" | 773 mm | 2'6" | 716 mm | 2'4" | 716 mm | 2'4" |
| 10 Maximum Bucket Rollback at Ground Level | 37° | | 38° | | 38° | | 38° | | 38° | |
| 11 Digging Depth | 83 mm | 3" | 123 mm | 5" | 123 mm | 5" | 110 mm | 4" | 110 mm | 4" |
| Maximum Grading Angle | 112° | | 113° | | 113° | | 116° | | 116° | |
| Width of Dozer Cutting Edge | N/A | | N/A | | N/A | | 2262 mm | 7'5" | 2406 mm | 7'11" |
| 12 Grill to Bucket Cutting Edge, Carry Position | 1487 mm | 4'11" | 1525 mm | 5'0" | 1525 mm | 5'0" | 1451 mm | 4'9" | 1451 mm | 4'9" |
| 13 Maximum Operating Height | 4355 mm | 14'3" | 4395 mm | 14'5" | 4395 mm | 14'5" | 4404 mm | 14'5" | 4404 mm | 14'5" |
| Jaw Opening Maximum | N/A | | N/A | | N/A | | 790 mm | 2'7" | 790 mm | 2'7" |
| Bucket Jaw Clamping Force | N/A | | N/A | | N/A | | 55 700 N | 12,521 lbf | 55 700 N | 12,521 lbf |
| Weight (does not include teeth or forks) | 451 kg | 994 lb | 473 kg | 1,043 lb | 493 kg | 1,087 lb | 745 kg | 1,642 lb | 774 kg | 1,706 lb |

| | IT Loader with Quick Coupler | | | | | |
|---|---------------------------------------|------------|--------------------------------------|------------|------------------------------------|------------|
| | General Purpose (0.96 m³/1.25 yd³) | | General Purpose (1.15 m³/1.5 yd³) | | Multi Purpose (1.0 m³/1.31 yd³) | |
| Capacity (SAE rated) | 0.96 m³ | 1.25 yd³ | 1.15 m³ | 1.5 yd³ | 1.0 m³ | 1.31 yd³ |
| Overall Bucket Width | 2262 mm | 89" | 2406 mm | 95" | 2279 mm | 90" |
| Lift Capacity at Maximum Height | 3716 kg | 8,193 lb | 3655 kg | 8,058 lb | 3448 kg | 7,601 lb |
| Lift Breakout Force | 51 085 N | 11,484 lbf | 50 555 N | 11,365 lbf | 49 452 N | 11,117 lbf |
| Tilt Breakout Force | 46 286 N | 10,405 lbf | 46 106 N | 10,365 lbf | 50 349 N | 11,318 lbf |
| 7 Maximum Hinge Pin Height | 3490 mm | 11'5" | 3490 mm | 11'5" | 3490 mm | 11'5" |
| 8 Dump Angle at Full Height | 44° | | 44° | | 44° | |
| Dump Height at Maximum Angle | 2679 mm | 8'9" | 2680 mm | 8'10" | 2745 mm | 9'0" |
| 9 Dump Reach at Maximum Angle | 869 mm | 2'10" | 868 mm | 2'10" | 814 mm | 2'8" |
| 10 Maximum Bucket Rollback at Ground Level | 40° | | 40° | | 39° | |
| 11 Digging Depth | 105 mm | 4" | 105 mm | 4" | 95 mm | 4" |
| Maximum Grading Angle | 110° | | 110° | | 112° | |
| Width of Dozer Cutting Edge | N/A | | N/A | | 2262 mm | 7'5" |
| 12 Grill to Bucket Cutting Edge, Carry Position | 1600 mm | 5'3" | 1597 mm | 5'3" | 1529 mm | 5'0" |
| 13 Maximum Operating Height | 4407 mm | 14'6" | 4477 mm | 14'8" | 4480 mm | 14'8" |
| Jaw Opening Maximum | N/A | | N/A | | 790 mm | 2'7" |
| Bucket Jaw Clamping Force | N/A | | N/A | | 55 700 N | 12,521 lbf |
| Weight (does not include teeth or forks) | 447 kg | 985 lb | 481 kg | 1,060 lb | 724 kg | 1,596 lb |

Dimensions and performance specifications shown are for machines equipped with 12.5/80-18 SGL front tires, 19.5L-24 IT525 rear tires, ROPS canopy, standard stick with 610 mm (24 in) standard duty bucket, 1.0 m³ (1.31 yd³) loader bucket and standard equipment unless otherwise specified.

430F2/430F2 IT Specifications

Backhoe Dimensions and Performance

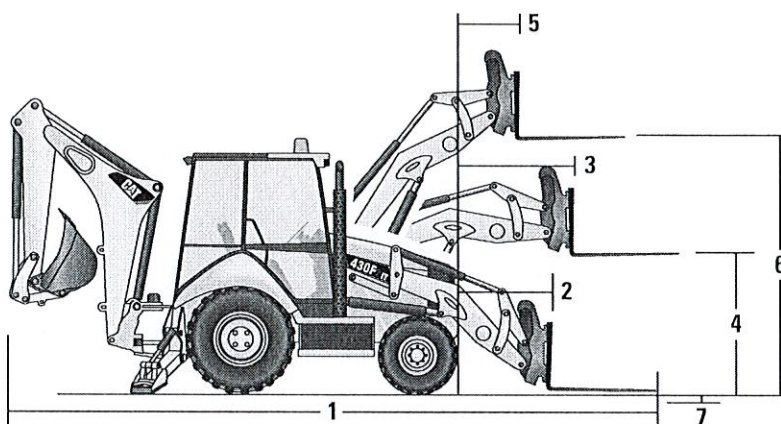


| | Standard Stick | | E-Stick Retracted | | E-Stick Extended | |
|--|----------------|------------|-------------------|------------|------------------|------------|
| 14 Digging Depth, SAE (maximum) | 4686 mm | 15'4" | 4795 mm | 15'9" | 5935 mm | 19'6" |
| 15 Digging Depth, 610 mm (2 ft) Flat Bottom | 4660 mm | 15'3" | 4766 mm | 15'8" | 5906 mm | 19'5" |
| Reach from Rear Axle Centerline at Ground Line | 7133 mm | 23'6" | 7227 mm | 23'10" | 8316 mm | 27'5" |
| 16 Reach from Swing Pivot at Ground Line | 6043 mm | 19'10" | 6137 mm | 20'2" | 7226 mm | 23'9" |
| Maximum Operating Height | 6007 mm | 19'9" | 6075 mm | 20'0" | 6958 mm | 22'11" |
| Loading Height | 3961 mm | 13'0" | 3921 mm | 12'10" | 4533 mm | 14'10" |
| 17 Loading Reach | 1855 mm | 6'1" | 2022 mm | 6'8" | 3003 mm | 9'10" |
| Swing Arc | 180° | | 180° | | 180° | |
| Bucket Rotation | 205° | | 205° | | 205° | |
| 18 Stabilizer Spread, Operating Position (center) | 3310 mm | 10'10" | 3310 mm | 10'10" | 3310 mm | 10'10" |
| Stabilizer Spread, Operating Position (outside) | 3770 mm | 12'4" | 3770 mm | 12'4" | 3770 mm | 12'4" |
| Stabilizer Spread, Transport Position | 2322 mm | 7'7" | 2322 mm | 7'7" | 2322 mm | 7'7" |
| Bucket Dig Force | 71 864 N | 16,156 lbf | 70 870 N | 15,932 lbf | 70 870 N | 15,932 lbf |
| Stick Dig Force | 44 778 N | 10,067 lbf | 43 841 N | 9,856 lbf | 32 414 N | 7,287 lbf |

Dimensions and performance specifications shown are for machines equipped with 12.5/80-18 SGL front tires, 19.5L-24 IT525 rear tires, ROPS canopy, standard stick with 610 mm (24 in) standard duty bucket, 1.0 m³ (1.31 yd³) loader bucket and standard equipment unless otherwise specified.

430F2/430F2 IT Specifications

Dimensions with Forks

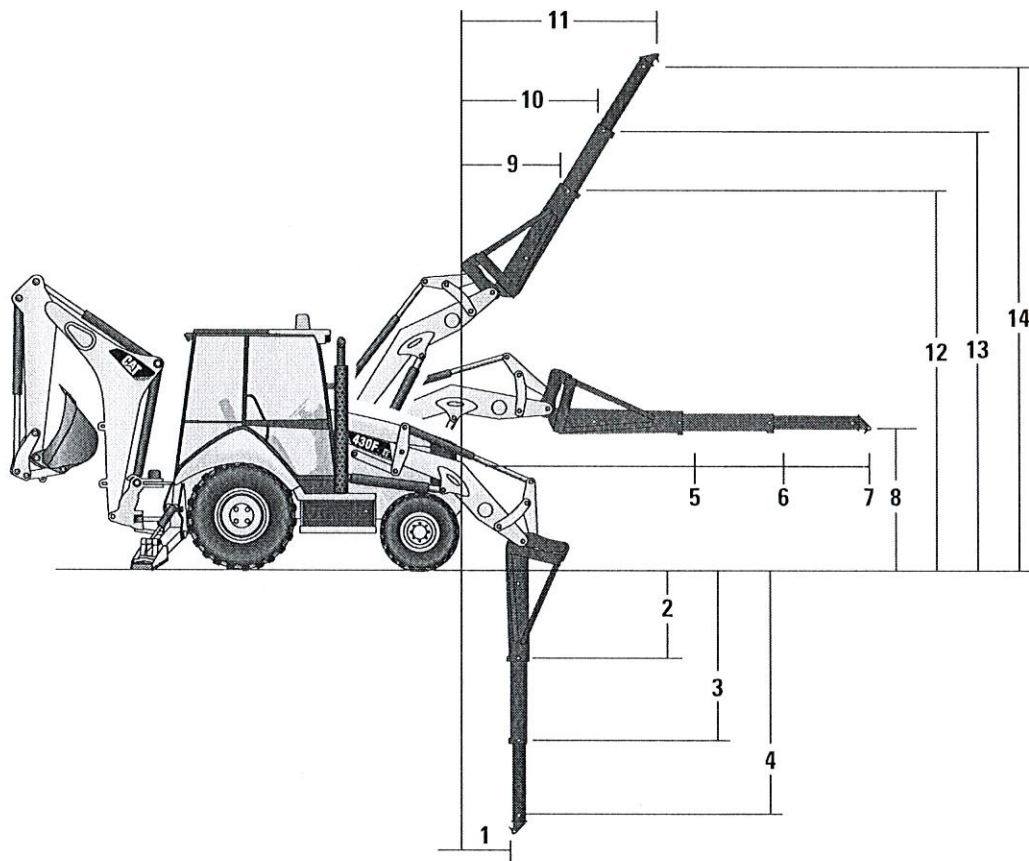


| Fork Tine Length | 1070 mm/3'6" | | 1220 mm/4'0" | | 1370 mm/4'10" | |
|---|--------------|----------|--------------|----------|---------------|----------|
| Operating Load (SAE J1197) | 2448 kg | 5,397 lb | 2368 kg | 5,220 lb | 2292 kg | 5,054 lb |
| SAE Load Center | 535 mm | 1'9" | 610 mm | 2'0" | 685 mm | 2'3" |
| Operating Load (CEN 474-4) | 2774 kg | 6,116 lb | 2749 kg | 6,062 lb | 6009 kg | 2,726 lb |
| CEN Load Center | 500 mm | 1'8" | 500 mm | 1'8" | 500 mm | 1'8" |
| 1 Overall Length (forks on ground) | 7822 mm | 25'8" | 7973 mm | 26'2" | 8121 mm | 26'8" |
| 2 Reach at Ground (from grill to heel of fork)† | 938 mm | 3'1" | 939 mm | 3'1" | 937 mm | 3'1" |
| 3 Maximum Reach (from grill to heel of fork)† | 1475 mm | 4'10" | 1475 mm | 4'10" | 1475 mm | 4'10" |
| 4 Fork Height at Maximum Reach | 1588 mm | 5'3" | 1588 mm | 5'3" | 1587 mm | 5'2" |
| 5 Reach at Maximum Height (from grill to heel of fork)† | 696 mm | 2'3" | 696 mm | 2'3" | 696 mm | 2'3" |
| 6 Maximum Fork Height | 3410 mm | 11'2" | 3410 mm | 11'2" | 3410 mm | 11'2" |
| 7 Maximum Fork Depth (below ground level) | -6 mm | 0" | -5 mm | 0" | -8 mm | 0" |

Dimensions and performance specifications shown are for machines equipped with 12.5/80-18 SGL front tires, 19.5L-24 IT525 rear tires, ROPS canopy, standard stick with 610 mm (24 inch) standard duty bucket, and 1.0 m³ (1.31 yd³) loader bucket and standard equipment unless otherwise specified.

430F2/430F2 IT Specifications

Dimensions with Material Handling Arm



| Material Handling Arm Position | Retracted | | Mid-Position | | Extended | |
|---|-----------|----------|--------------|----------|-----------|----------|
| Operating Load (SAE J1197 and CEN 474-4)* | 1056 kg | 2,328 lb | 674 kg | 1,487 lb | 494 kg | 1,089 lb |
| Overall Length, Maximum | 9008 mm | 29'7" | 10 005 kg | 32'10" | 11 005 kg | 36'1" |
| 1 Reach at Maximum Depth (from machine nose) | 589 mm | 1'11" | 592 mm | 1'11" | 595 mm | 1'11" |
| 2, 3, 4 Maximum Depth | 2532 mm | 8'4" | 3530 mm | 11'7" | 4530 mm | 14'10" |
| 5, 6, 7 Maximum Reach (from machine nose) | 3184 mm | 10'5" | 4182 mm | 13'9" | 5182 mm | 17'0" |
| 8 Height at Maximum Reach | 1101 mm | 3'7" | 1103 mm | 3'7" | 1106 mm | 3'8" |
| 9, 10, 11 Reach at Maximum Height (from machine nose) | 1577 mm | 5'2" | 2164 mm | 7'1" | 2755 mm | 9'0" |
| 12, 13, 14 Maximum Height | 4570 mm | 15'0" | 5377 mm | 17'8" | 6183 mm | 20'3" |

*Hydraulically limited.

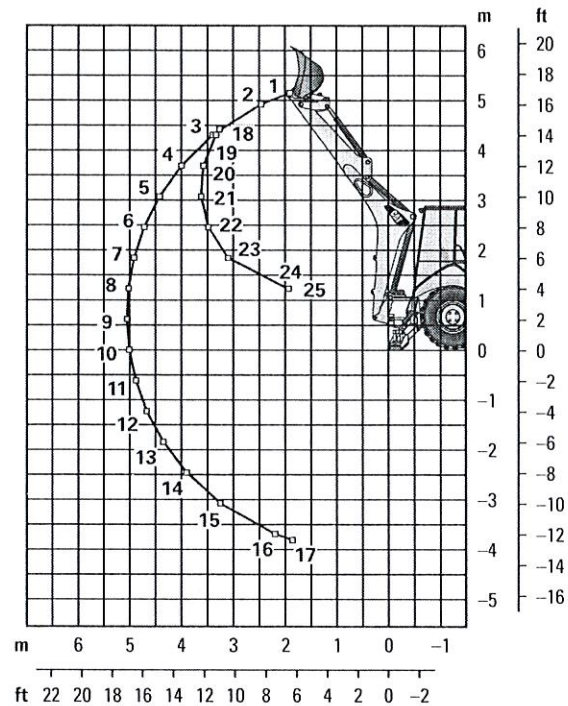
Dimensions and performance specifications shown are for machines equipped with 12.5/80-18 SGL front tires, 19.5L-24 IT525 rear tires, ROPS canopy, standard stick with 610 mm (24 inch) standard duty bucket, and 1.0 m³ (1.31 yd³) loader bucket and standard equipment unless otherwise specified.

430F2/430F2 IT Specifications

Backhoe Lift Capacity

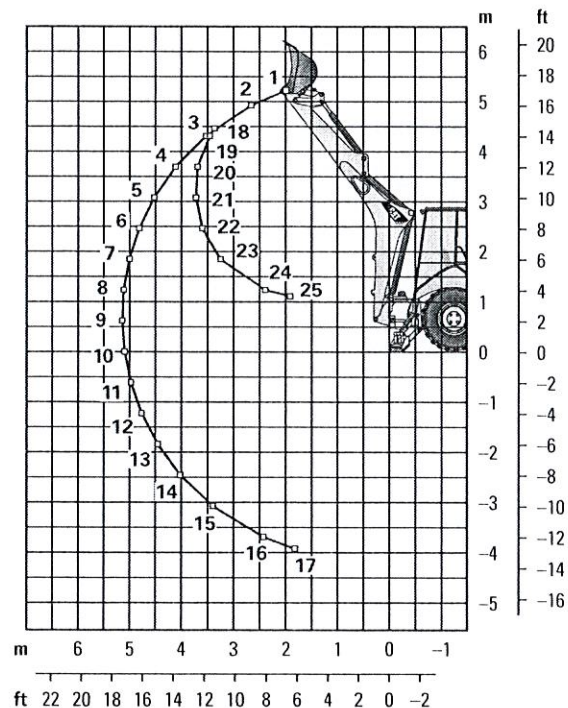
Cat 430F2/430F2 IT Standard Stick

| Boom Lifting | kg | lb |
|---------------|------|--------|
| 1 | 1508 | 3,318 |
| 2 | 1782 | 3,921 |
| 3 | 1936 | 4,258 |
| 4 | 1925 | 4,236 |
| 5 | 1878 | 4,131 |
| 6 | 1819 | 4,001 |
| 7 | 1757 | 3,866 |
| 8 | 1698 | 3,735 |
| 9 | 1641 | 3,610 |
| 10 | 1588 | 3,493 |
| 11 | 1539 | 3,387 |
| 12 | 1496 | 3,291 |
| 13 | 1459 | 3,211 |
| 14 | 1432 | 3,151 |
| 15 | 1425 | 3,136 |
| 16 | 1503 | 3,307 |
| 17 | 1573 | 3,461 |
| Stick Lifting | kg | lb |
| 18 | 2453 | 5,397 |
| 19 | 2636 | 5,800 |
| 20 | 2830 | 6,226 |
| 21 | 2773 | 6,100 |
| 22 | 2906 | 6,394 |
| 23 | 3367 | 7,408 |
| 24 | 6152 | 13,535 |
| 25 | 6240 | 13,728 |



Cat 430F2/430F2 IT Extendible Stick – Retracted

| Boom Lifting | kg | lb |
|---------------|------|--------|
| 1 | 1250 | 2,751 |
| 2 | 1541 | 3,391 |
| 3 | 1663 | 3,659 |
| 4 | 1654 | 3,639 |
| 5 | 1610 | 3,542 |
| 6 | 1555 | 3,421 |
| 7 | 1497 | 3,294 |
| 8 | 1441 | 3,169 |
| 9 | 1386 | 3,049 |
| 10 | 1335 | 2,936 |
| 11 | 1287 | 2,832 |
| 12 | 1244 | 2,738 |
| 13 | 1207 | 2,656 |
| 14 | 1178 | 2,593 |
| 15 | 1166 | 2,565 |
| 16 | 1211 | 2,665 |
| 17 | 1316 | 2,896 |
| Stick Lifting | kg | lb |
| 18 | 2158 | 4,747 |
| 19 | 2367 | 5,208 |
| 20 | 2538 | 5,583 |
| 21 | 2486 | 5,469 |
| 22 | 2599 | 5,719 |
| 23 | 2979 | 6,553 |
| 24 | 4516 | 9,934 |
| 25 | 6083 | 13,382 |



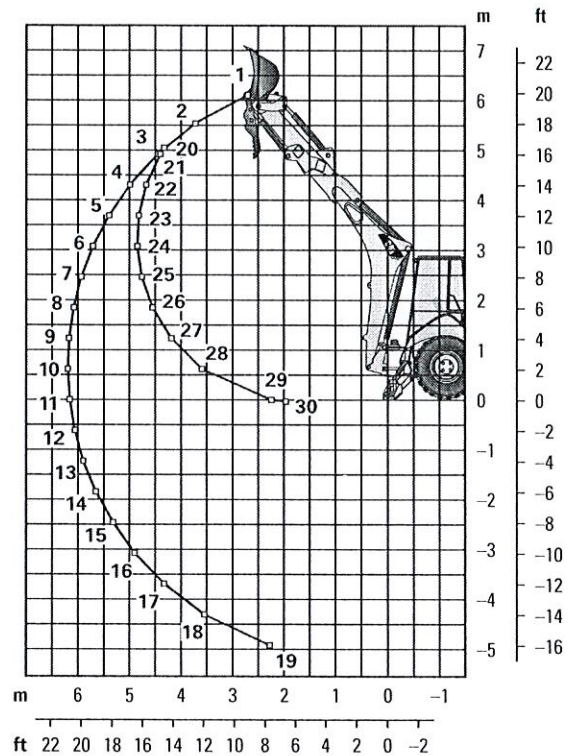
Lift Capacities are over-end values. Machine equipped with 4WD, OROPS, 0.96 m³ (1.25 yd³) general purpose bucket, and no counterweight. Extendible stick includes 460 kg (1,015 lb) counterweight.

430F2/430F2 IT Specifications

Backhoe Lift Capacity

Cat 430F2/430F2 IT Extendible Stick – Extended

| Boom Lifting | kg | lb |
|---------------|------|--------|
| 1 | 679 | 1,493 |
| 2 | 1017 | 2,237 |
| 3 | 1124 | 2,474 |
| 4 | 1158 | 2,547 |
| 5 | 1167 | 2,553 |
| 6 | 1149 | 2,527 |
| 7 | 1129 | 2,484 |
| 8 | 1106 | 2,433 |
| 9 | 1081 | 2,378 |
| 10 | 1056 | 2,323 |
| 11 | 1032 | 2,270 |
| 12 | 1009 | 2,220 |
| 13 | 989 | 2,176 |
| 14 | 972 | 2,138 |
| 15 | 959 | 2,111 |
| 16 | 954 | 2,100 |
| 17 | 963 | 2,119 |
| 18 | 1005 | 2,210 |
| 19 | 1211 | 2,663 |
| Stick Lifting | kg | lb |
| 20 | 1197 | 2,633 |
| 21 | 1277 | 2,810 |
| 22 | 1565 | 3,444 |
| 23 | 1735 | 3,817 |
| 24 | 1715 | 3,774 |
| 25 | 1753 | 3,856 |
| 26 | 1860 | 4,092 |
| 27 | 2079 | 4,575 |
| 28 | 2563 | 5,638 |
| 29 | 4910 | 10,802 |
| 30 | 5883 | 12,943 |



Lift Capacities are over-end values. Machine equipped with 4WD, OROPS, 0.96 m³ (1.25 yd³) general purpose bucket, and no counterweight. Extendible stick includes 460 kg (1,015 lb) counterweight.

430F2/430F2 IT Specifications

Counterweights

Minimum Counterweight Recommendations

Standard Stick

| Loader Bucket | Power Train | Single-Tilt | | IT Loader w/QC | |
|-----------------------|-------------|------------------|-----|------------------|----|
| | | kg | lb | kg | lb |
| GP | 4WD | 240 | 530 | no counterweight | |
| MP | 4WD | no counterweight | | no counterweight | |
| Forks | 4WD | N/A | N/A | no counterweight | |
| Material Handling Arm | 4WD | N/A | N/A | no counterweight | |

Extendible Stick

| Loader Bucket | Power Train | Single-Tilt | | IT Loader w/QC | |
|-----------------------|-------------|-------------|-------|------------------|-------|
| | | kg | lb | kg | lb |
| GP | 4WD | 460 | 1,015 | 460 | 1,015 |
| MP | 4WD | 240 | 530 | no counterweight | |
| Forks | 4WD | N/A | N/A | 240 | 530 |
| Material Handling Arm | 4WD | N/A | N/A | 240 | 530 |

Backhoe Buckets

With weld on adapters and pin-on teeth

Standard Duty

| Width | | Rated Capacity | | Weight | | No. of Teeth |
|-------|----|----------------|------|--------|-----|--------------|
| mm | in | L | ft³ | kg | lb | |
| 305 | 12 | 80 | 2.8 | 111 | 245 | 3 |
| 457 | 18 | 120 | 4.2 | 122 | 268 | 4 |
| 610 | 24 | 180 | 6.4 | 141 | 311 | 5 |
| 762 | 30 | 230 | 8.1 | 157 | 345 | 5 |
| 914 | 36 | 290 | 10.2 | 176 | 388 | 6 |

Heavy Duty

| Width | | Rated Capacity | | Weight | | No. of Teeth |
|-------|----|----------------|------|--------|-----|--------------|
| mm | in | L | ft³ | kg | lb | |
| 305 | 12 | 80 | 2.8 | 121 | 266 | 3 |
| 406 | 16 | 110 | 3.9 | 128 | 282 | 3 |
| 457 | 18 | 120 | 4.2 | 135 | 299 | 4 |
| 610 | 24 | 180 | 6.4 | 151 | 333 | 5 |
| 762 | 30 | 230 | 8.1 | 177 | 391 | 5 |
| 914 | 36 | 290 | 10.2 | 201 | 443 | 6 |

Soil Excavation

| Width | | Rated Capacity | | Weight | | No. of Teeth |
|-------|----|----------------|------|--------|-----|--------------|
| mm | in | L | ft³ | kg | lb | |
| 457 | 18 | 180 | 6.4 | 155 | 341 | 4 |
| 610 | 24 | 240 | 8.5 | 182 | 402 | 5 |
| 762 | 30 | 320 | 11.3 | 206 | 454 | 5 |
| 914 | 36 | 380 | 13.4 | 233 | 513 | 6 |

Heavy Duty Rock

| Width | | Rated Capacity | | Weight | | No. of Teeth |
|-------|----|----------------|------|--------|-----|--------------|
| mm | in | L | ft³ | kg | lb | |
| 305 | 12 | 70 | 2.5 | 127 | 279 | 3 |
| 457 | 18 | 130 | 4.6 | 146 | 322 | 4 |
| 610 | 24 | 200 | 7.1 | 174 | 384 | 5 |
| 762 | 30 | 270 | 9.5 | 197 | 434 | 5 |
| 914 | 36 | 330 | 11.7 | 224 | 493 | 6 |

Coral

| Width | | Rated Capacity | | Weight | | No. of Teeth |
|-------|----|----------------|-----|--------|-----|--------------|
| mm | in | L | ft³ | kg | lb | |
| 305 | 12 | 60 | 2.1 | 134 | 295 | 4 |
| 457 | 18 | 100 | 3.5 | 155 | 341 | 6 |
| 610 | 24 | 140 | 4.9 | 182 | 402 | 8 |
| 762 | 30 | 190 | 6.7 | 210 | 463 | 10 |

Heavy Duty – Pin Lock

| Width | | Rated Capacity | | Weight | | No. of Teeth |
|-------|----|----------------|------|--------|-----|--------------|
| mm | in | L | ft³ | kg | lb | |
| 305 | 12 | 96 | 3.4 | 113 | 249 | 3 |
| 406 | 16 | 123 | 4.3 | 131 | 288 | 3 |
| 457 | 18 | 139 | 4.9 | 139 | 307 | 4 |
| 610 | 24 | 207 | 7.3 | 168 | 370 | 5 |
| 762 | 30 | 275 | 9.7 | 194 | 428 | 5 |
| 914 | 36 | 345 | 12.2 | 224 | 494 | 6 |

High Capacity – Pin Lock

| Width | | Rated Capacity | | Weight | | No. of Teeth |
|-------|----|----------------|------|--------|-----|--------------|
| mm | in | L | ft³ | kg | lb | |
| 305 | 12 | 96 | 4.6 | 113 | 287 | 3 |
| 406 | 16 | 123 | 5.6 | 131 | 327 | 3 |
| 457 | 18 | 139 | 6.5 | 139 | 346 | 4 |
| 610 | 24 | 207 | 9.6 | 168 | 414 | 5 |
| 762 | 30 | 275 | 12.9 | 194 | 475 | 5 |
| 914 | 36 | 345 | 16.2 | 224 | 543 | 6 |

Standard Equipment

Standard equipment may vary. Consult your Cat dealer for details.

- Adjustable auxiliary controls, backhoe loader
- Air cleaner
- Alarm, back-up
- Alternator, 150 amp
- Audible system fault alarm
- Automatic Engine Speed Control (AESC)
- Battery, maintenance-free, 880 CCA
- Battery disconnect switch
- Battery remote jumpstart
- Boom transport lock
- Brace, lift cylinder
- Brake, secondary parking
- Brakes, hydraulically boosted, oil disc, dual pedals, interlocking
- Bucket level indicator
- Canopy, ROPS/FOPS
- Cat cushion swing system
- Coat restraint
- Coolant/antifreeze, extended life
- Counterweight, bumper
- Dome light (cab only)
- Diagnostic port for engine, machine and gauge cluster Electronic Control Modules
- Differential lock, loader joystick
- Engine, Cat C4.4 ACERT (Direct Injection Turbocharged), meets Tier 4 Final emission standards, selective catalyst reduction, diesel oxidation catalyst (DOC)
- Engine enclosure, sound suppression removal panels
- Face seals, O-ring
- Fan, suction and guard
- Fast reversing shuttle, all gears
- Fenders, rear
- Filters, spin-on: fuel, engine oil, transmission oil, water separator
- Filters, bowl and cartridge: hydraulic fluid
- Flashing hazards/signal lights
- Floor mat
- Four Wheel Drive
- Fuel tank, fully enclosed
- Fully hinged front grill for cooling package cleaning access
- Gauge cluster: coolant temperature, fuel level, torque converter temperature, DEF level
- Ground level fuel fill and DEF fill
- High ambient cooling package
- Hood lock, inside cab
- Hydraulic hose, XTTM
- Hydraulic oil cooler
- Hydraulic oil level sight gauge
- Hydraulic valve, hydrostatic steering
- Hydraulic valves, loader 2 function
- Hydraulic valves, backhoe 5 function
- Hydraulics, load sensing with variable displacement piston pump
- Indicator lights: Eco mode active, water in fuel, remote dial throttle active, engine warning, warning lamp, emissions module malfunction, AESC active, low battery/charging system warning, high hydraulic oil temperature; LCD warnings: engine oil pressure, machine locked (if equipped), service due, air filter blocked, high coolant temperature, auto idle shutdown, high torque converter temperature, hydraulic filter bypass
- Instrument panel lights
- Joystick controls: pilot operated, excavator-style with pattern changer
- Key start/stop system
- LCD screen: engine speed, hour meter, gear/direction, battery voltage, hydraulic oil temperature, torque converter temperature, coolant temperature, trip totals (fuel and hours), lifetime totals (fuel and hours), operator settings (units, brightness, programmable hoe auxiliary flow), service mode diagnostics, oil life reset, DPF force regeneration, maintenance intervals, ECM/system info
- Lights, working (4 front, 4 rear)
- Loader, self-leveling, return-to-dig and transmission disconnect switch
- Loader, single tilt
- Mirror, rearview
- One-touch low idle
- Open circuit breather
- Pattern changer, in cab
- Power receptacle, 12 volt, 2 internal, 1 external
- Power steering, hydrostatic
- Radio ready cab
- Seat belt, retractable, 51 mm (2 in)
- Socket, two roof
- Stabilizer shoes, street
- Steering knob
- Seat, air suspension, fabric or vinyl cover, with armrest
- Starting system, glow plugs
- Steering, hydrostatic
- Storage compartment, lockable
- Storage tray
- Stop and tail lights
- Swing transport lock
- Tilt steering wheel
- Tires
- Toolbox, external, lockable
- Torque converter
- Throttle, hand and foot, electronic
- Transmission, four speed, syncromesh
- Transmission neutralizer switch
- Transport tie-downs
- Vandalism locks, four
- Warning horn, electric

430F2/430F2 IT Optional Equipment

Optional Equipment

Optional equipment may vary. Consult your Cat dealer for details.

- Battery, additional, 880 CCA
- Cab, deluxe
- Cold weather fuel (–30° C/–22° F)
- Cold weather package, including additional battery, engine block heater, radiator antifreeze, cold weather fuel (–30° C/–22° F) and mounting for an ether bottle
- Counterweights, 115 kg (255 lb), 240 kg (530 lb) or 460 kg (1,015 lb)
- Fenders, front with integral steps
- Guard, boom protection plate
- Guard, stabilizer, rock
- Hydraulic valves, loader (3rd valve for GP, MP or Quick Coupler)
- Hydraulic valves, backhoe 6 function
- Hydraulic lines, combined function auxiliary
- Loader, IT with Quick Coupler and pilot loader control
- Product Link, satellite, PL631E
- Product Link, cellular, PL6411
- Quick Coupler, hydraulic, dual lock
- Quick Coupler, manual, dual lock
- Quick Coupler, pin lock
- Radio and CD player
- Radio and CD player, Bluetooth
- Ride Control
- Rotating beacon, magnetic mount
- Seat belt, 75 mm (3 in)
- Seat, heated
- Security system keypad
- Stabilizer pads, reversible
- Stick, extendible
- Storage box
- Transmission, AutoShift
- Transmission, AutoShift with lock-up torque converter
- Vandalism protection, gauge cover
- Work Tool Attachments such as buckets, forks, material handling arms, augers, hammers, brooms, cold planers and vibratory plate compactors. See your Cat dealer for more information.

430 BID SPECS

| | |
|----------------------|---|
| BACKHOE LOADERS | Cat 430F2 |
| BASIC SPECIFICATIONS | |
| Y___ N___ | Backhoe shall have a minimum digging depth of 15'4" (4686 mm) with standard stick and 19' 6" (5935 mm) with extendible stick. |
| Y___ N___ | Turbocharged engine net flywheel horsepower shall be at least 109 HP (81 kW) according to SAE J1349. |
| Y___ N___ | Engine net peak power @ 1800 rpm shall be at least 110 HP (82kW) according to SAE J1349. |
| Y___ N___ | Machine to be equipped with an economy control function for maximum fuel efficiency |
| Y___ N___ | Unit shall have a maximum overall transport height of 11 ft 9 in (3577 mm) with standard tires and standard stick. |
| Y___ N___ | Unit shall have a maximum overall transport height of 11 ft 11 in (3631 mm) with standard tires and extendible stick. |
| Y___ N___ | Unit shall have a maximum height to the top of the canopy of 9 ft 3 in (2819 mm) with standard tires. |
| Y___ N___ | Maximum overall transport length shall be 24'4" (7423 mm) with standard tires and standard stick |
| Y___ N___ | Maximum overall transport length shall be 24'5" (7440 mm) with standard tires and extendible stick |
| Y___ N___ | Unit shall have a maximum width of 7'7" (2322 mm) with a general-purpose bucket. |
| Y___ N___ | Unit shall have a minimum wheelbase of 7'3" (2200 mm). |
| ENGINE | |
| Y___ N___ | Engine must comply with U.S. EPA Tier 4 Final / EU Stage IV off road emission requirements. |
| Y___ N___ | Machine shall utilize Selective Cataytic Reduction (SCR) |
| Y___ N___ | Engine shall have an economy mode to help maximize fuel efficiency, while maintaining backhoe performance |
| Y___ N___ | Turbocharged engine net flywheel horsepower shall be at least 109 HP (81 kW) @ 2200 RPM according to SAE J1349. |
| Y___ N___ | Turbocharged engine net flywheel horsepower shall be at least 110 HP (82 kW) @ 2200 RPM according to ISO9249. |
| Y___ N___ | Turbocharged engine net peak flywheel horsepower shall be at least 110 HP (82 kW) @ 1800 RPM according to SAE J1349. |
| Y___ N___ | Turbocharged engine net peak flywheel horsepower shall be at least 111 HP (83 kW) @ 1800 RPM according to ISO 9249. |
| Y___ N___ | Net peak torque at 1400 rpm shall be not less than 360 ft-lb (488 N-m) with 39% torque rise. |
| Y___ N___ | Engine compartment side panels shall have standard noise reduction and heat control insulation. |
| Y___ N___ | Units shall be equipped with a turbocharged, four cylinder, direct injection diesel engine with high strength, cast iron alloy single block design for high strength and long life. |
| Y___ N___ | The engine shall have three-ring pistons made of lightweight, silicon/aluminum alloy for strength and maximum thermal conductivity. |
| Y___ N___ | The engine shall have a forged chrome/molybdenum-steel crankshaft with salt bath nitro carburized pins and journals. |
| Y___ N___ | The engine shall have front and rear crankshaft oil seals that are "lip" type Viton and PTFE designs featuring an integral dust lip. |
| Y___ N___ | The engine shall have nitrided, martensitic chrome silicon steel inlet valves and nitrided, austenitic chrome manganese-nickel steel exhaust valves for durability. |
| Y___ N___ | The engine shall have a high strength, deep skirt cylinder block that is a cast iron alloy, monobloc design for increased strength and long life. |

430 BID SPECS

| | |
|--|---|
| Y___ N___ | The engine shall have a high strength cylinder head that is a cast iron alloy construction with extra duty wall and deck thickness, including intake and exhaust ports that are precision cast to promote optimum gas flow. |
| Y___ N___ | The engine shall have a high pressure, direct injection fuel system providing accurate fuel delivery with a mechanically driven fuel transfer pump for reliability. |
| Y___ N___ | Engine shall have a fuel filtration rating of no more than 10-micron for the primary fuel filter / water separator. |
| Y___ N___ | Engine shall have a secondary fuel filter with a rating of no more than 4-microns. |
| Y___ N___ | Engine shall have a vertical spin-on fuel filters. |
| Y___ N___ | Engine shall be equipped with electric fuel priming pump as standard equipment. |
| Y___ N___ | Engine shall have a water/sediment bowl with water separator service indicator light. |
| Y___ N___ | The engine shall have an internally mounted, dry-type, perimeter seal air cleaner with an integral precleaner, automatic dust ejection system, and filter condition indicator. |
| Y___ N___ | The engine will have a standard glow plug starting aid for efficient cold weather starting to -20 degrees F (-28 degrees C) without using ether. |
| Y___ N___ | The engine shall have a high contact ratio gear train, peripheral fixed isolation top cover and open deck block design to reduce bare engine noise. |
| Y___ N___ | Heat exchangers shall be located within the engine compartment for easy service access. |
| Y___ N___ | Engine shall be protected to a minimum -34 degrees F (-36.7 degrees C) with extended life antifreeze that needs not to be replaced for 5 years. |
| Y___ N___ | Optionally, engine shall be protected to a minimum -58 degrees F (-50 degrees C) with extended life antifreeze that does not need to be replaced for 5 years. |
| Y___ N___ | Engine cooling fan shall have a heavy-duty guard that fully prevents human contact while in operation. |
| Y___ N___ | Radiator shall have a heavy-duty guard to resist continued impact at low speeds. |
| Y <input checked="" type="checkbox"/> N___ | Coolant circulation shall be provided by a gear-driven water pump, not solely belt driven, to prevent accessory belt slip and continue coolant circulation in the event of a belt failure. |
| Y___ N___ | Engine shall be equipped with an alternator that has a charging capacity of minimum 150 amperes. |
| Y___ N___ | Engine shall be equipped with one maintenance-free 880 CCA battery, with the option for two such batteries. |
| Y___ N___ | Engine shall be equipped with a 12-volt direct-electric starting and charging system. |
| Y___ N___ | Machine shall be equipped with a standard battery disconnect switch |
| Y___ N___ | Engine shall be equipped with a single, automatically tensioned, serpentine accessory belt. |
| Y___ N___ | Engine air filter shall have a pre-cleaner and a dust ejector. |
| Y___ N___ | Engine shall have variable-speed, hand and foot governor controls. |
| Y___ N___ | Engine shall have a full flow spin-on type oil filter that is vertically mounted below the crankshaft centerline. |
| Y___ N___ | Engine shall have replaceable valve guides and valve seats for extended service life. |
| Y___ N___ | Backhoe joystick shall be equipped with a quick idle down feature that lowers the engine speed to 1,000 rpm |
| Y___ N___ | Machine shall have Automatic Engine Speed Control that reduces engine speed when the backhoe is not in use. This will conserve fuel and lower emission noise |
| POWERTRAIN/TRANSMISSION | |
| Y___ N___ | Transmission shall have an electric, neutral lock switch on the front console to prevent driveline engagement |
| Y___ N___ | Transmission, differentials, and hydraulics shall have separate fluid reservoirs. |
| Y___ N___ | 4WD shall be pendulum mounted, grease-free with sealed for life kingpins, able to be engaged "on-the-go" while under load or any operating condition. |
| Y___ N___ | 4WD shall be engaged at anytime by activating switch on front console. An operator shall be able to activate the switch while the machine is moving or stopped, also with or without a load |

430 BID SPECS

| | |
|-----------|--|
| Y___ N___ | 4WD guard shall provide full coverage between the frame rails to protect the front drive shaft. |
| Y___ N___ | Unit shall be able to change direction and travel speed on-the-go. |
| Y___ N___ | Forward/reverse shuttle shall be a contactless unit for reliability. |
| Y___ N___ | Units shall be equipped with a transmission disconnect button on the gear shifter and loader control to allow full engine power to the loader. |
| Y___ N___ | Transmission shall be made, serviced and supported by the machine manufacturer. |
| Y___ N___ | Transmission shall have spin-on type oil filter vertically mounted. |
| Y___ N___ | Differential lock shall be located on the loader joystick control |
| Y___ N___ | The automatically shifting transmission shall have a manual override switch to allow the operator full control over the gear selection. |
| Y___ N___ | Unit shall be equipped with a digital torque converter temperature. |
| Y___ N___ | Unit shall have a single stage torque converter of no less than 2.63:1 stall ratio. |
| Y___ N___ | Unit shall have a high gear speed of no less than 25 mph (40.0 kph). |
| Y___ N___ | Unit shall have 4 forward gears, 4 reverse gears, and a fully synchronized Power-Shuttle transmission coupled with electro-hydraulically shifted forward and reverse shuttle clutches. |
| Y___ N___ | Automatically shifting transmission with 6 forward and 3 reverse shall be offered as an option with "kick-down" capability. |
| Y___ N___ | Planetary Drive shall have four reduction (sun gears) in the front drive. |

STEERING

| | |
|-----------|--|
| Y___ N___ | Oscillation shall be no less than 11 degrees each side direction from centerline. |
| Y___ N___ | Machine shall have hydrostatic steering. |
| Y___ N___ | Steering cylinder shall be double acting with a 52-degree steering angle. |
| Y___ N___ | Standard variable speed steering for quicker turning |
| Y___ N___ | Unit shall have a minimum 4WD steering cylinder size of 2.6" (65mm) bore, 4.7" (120 mm) stroke, and 1.42" (36mm) rod diameter. |
| Y___ N___ | Unit shall have a minimum 2WD steering cylinder size of 2.6" (65mm) bore, 4.7" (120 mm) stroke, and 1.4" (36 mm) rod diameter. |

BRAKES

| | |
|-----------|--|
| Y___ N___ | Brake mode selector switch shall have a 3 position switch allowing 2WD, 2WD travel with 4WD braking and full time four wheel drive. |
| Y___ N___ | Two wheel drive with four wheel braking must be available at all speeds and when the machine is in any gear. |
| Y___ N___ | Parking/secondary brakes shall be independent of the service brake system, allow operator complete control for a modulated stop, and shall be mechanically applied and adjusted from the cab without the need for tools. |
| Y___ N___ | Foot-operated brake pedals shall be able to be interlocked for roading. |
| Y___ N___ | Service brakes shall be hydraulically boosted for low pedal efforts. |
| Y___ N___ | Service brakes shall be completely enclosed and sealed using Kevlar as brake pad media. |
| Y___ N___ | Brakes shall be outboard oil-immersed, hydraulically actuated, multiple discs on final drive input drive shaft. |
| Y___ N___ | Service brakes shall be fully self-adjusting. |

HYDRAULIC SYSTEM

| | |
|-----------|---|
| Y___ N___ | Hydraulic system shall include high-pressure hoses consisting of 4 layers of overlapping insulated spiral wire matrix. |
| Y___ N___ | A single, optional auxiliary hydraulic circuit shall be capable of operating hammers, compactors, cold planers, augers, thumbs, side tilt couplers and other work tools |
| Y___ N___ | Machine must have adjustable auxiliary flow control for better controllability of attachments |
| Y___ N___ | Machine shall be able to reach maximum lift capacity at any engine speed. |

430 BID SPECS

| | |
|-----------|---|
| Y___ N___ | Maximum hydraulic pump pressure shall be at least 3,600 psi (25, 000 kPa) for the backhoe and at least 3,600 psi (25, 000 kPa) for the loader |
| Y___ N___ | Hydraulic system shall have a replaceable 6-micron vertically mounted, bowl and cartridge filter that is accessible from under the main frame. |
| Y___ N___ | Hydraulic pump shall be rated at 43gpm (163 lpm) |
| Y___ N___ | Machine shall have an electronically controlled variable displacement load sensing, axial piston pump for low idle lifting and maximum durability. |
| Y___ N___ | Closed-center implement valves shall be standard |
| Y___ N___ | Unit shall contain flow sharing valves to allow for machine multifunction |
| Y___ N___ | Machine shall be equipped with an electronic pump torque limiter |
| Y___ N___ | Hose fitting shall have O-ring face seal connections for maximum seal reliability. |
| Y___ N___ | Hydraulic tank shall be mounted towards the rear of the engine above the pump, enabling the hood of the machine to slope downward for visibility and to keep positive pressure into the pump supply hose. |
| Y___ N___ | Hydraulic tank shall be made of non-metallic material to eliminate both weld shop contamination and the possibility of rust formation. |
| Y___ N___ | Supply hose to the pump shall be protected high within the chassis and not vulnerable to puncture. |
| Y___ N___ | Backhoe hydraulic lines shall be fastened and constrained from hanging low within the chassis, preventing hoses from damage. |
| Y___ N___ | Combination auxiliary lines shall be available for both one way or two way flow |
| Y___ N___ | All implement hydraulic lines will incorporate hoses with a high wear resistant coating. |
| Y___ N___ | All hydraulic hoses restrained by rubber grommets and steel band clamps shall have full protective coverage by the rubber grommet, preventing cuts and chaffing by the band clamps. |

AXLES

| | |
|-----------|---|
| Y___ N___ | Front axle shall be pendulum mounted, permanently sealed and lubricated |
| Y___ N___ | Rear axle shall have differential lock with "on-the-go" engagement. |
| Y___ N___ | 2WD front axle shall have a minimum static load rating of 50582 lbs (22964 kg). |
| Y___ N___ | 2WD front axle shall have a minimum dynamic load rating of 20233 lbs (9186 kg). |
| Y___ N___ | 4WD front axle shall have a minimum static load rating of 50582 lbs (22964 kg). |
| Y___ N___ | 4WD front axle shall have a minimum dynamic load rating of 20233 lbs (9186 kg). |
| Y___ N___ | Rear axle shall have a minimum static load rating of 50582 lb (22964 kg). |
| Y___ N___ | Rear axle shall have a minimum dynamic load rating of 20233 lbs (9186 kg). |
| Y___ N___ | The final drives shall be heavy-duty outboard planetary type, distributing loads over three gears sealed in separate oil compartments for long-life and minimum service |
| Y___ N___ | Heavy-duty rear axle shall be semi-floating with self-adjusting inboard brakes. |

WHEELS/TIRES

| | |
|-----------|--|
| Y___ N___ | Machine shall have 2WD with an option for 4WD. |
| Y___ N___ | 4WD Tires shall be no less than 12.5/80-18 12PR (front) and 19.5 – 24 12PR (rear) with radial tires. |
| Y___ N___ | All valve stems to be protected by metal valve stem covers |
| Y___ N___ | Front tires shall ride inside loader bucket cutting width. |

OPERATORS STATION

| | |
|-----------|---|
| Y___ N___ | OSHA approved ROPS/FOPS shall be integral with cab and canopy. |
| Y___ N___ | On ROPS canopy units an optional, lockable vandalism cover will be available which protects the instrument gauges, key switch and electrical switches on the right console. |
| Y___ N___ | Operator shall have complete control to disable, or lock, the backhoe Pilot Controls with a single switch on the console. |

430 BID SPECS

| | |
|-----------|---|
| Y___ N___ | The backhoe Pilot Controls locking switch shall always indicate the correct state of the controls, "locked" or "unlocked," and be lighted when "locked". |
| Y___ N___ | Pilot Controls for the backhoe shall be adjustable fore/aft, side to side and actuated by a foot control |
| Y___ N___ | Machine shall come standard with horn, audible back up alarm and electric fuel system shut off. |
| Y___ N___ | The governor pedal shall be hinged and mounted to the floor for maximum pedal positioning control. |
| Y___ N___ | Engine RPM shall also be controlled by electronic rotary dial |
| Y___ N___ | Side instruments shall include a premium gauge cluster consisting of LCD Information screen and LCD warnings. LDC warns shall include; Engine Oil Pressure, Machine Locked, Service Due, Air Filter Blocked, High Coolant Temperature, Auto Idle Shutdown, High Torque Converter Temperature and Hydraulic Filter Bypass |
| Y___ N___ | Unit shall have a lighted instrument panel located on the right side of the cab so that it is visible from both loader and backhoe operating positions. Indicator lights to include, Water in Fuel, Remote dial throttle active, engine warning, warning lamp, emissions module malfunction, AESC active, Regen Inhibited, Low battery/charging system warning, high hydraulic oil temperature, Wait to start and Eco Mode Active |
| Y___ N___ | Canopy machines shall include two front and two rear working lights. |
| Y___ N___ | Cab machines shall include four front and four rear working lights. |
| Y___ N___ | Machine shall have stop and turn signals with flashing hazard lamps visible from front and rear. |
| Y___ N___ | Electric auxiliary socket shall be available on roof for connection to items such as a rotating beacon. |
| Y___ N___ | Roof cab shall have three magnetic beacon locations. |
| Y___ N___ | Optional cargo net liner shall be available for additional storage |
| Y___ N___ | A switch, accessible to the operator from the seat, shall control the auxiliary socket, primarily used for beacon operation. |
| Y___ N___ | Operator's compartment shall come equipped with a standard air suspension seat that can be adjusted in the fore/aft position and has a lever that controls the release for rotation at 180 degree swivel from anywhere on a sliding track mechanism. |
| Y___ N___ | Equipped with the standard steering wheel, the seat shall be able to swivel 180 degrees in a single motion without contacting the steering wheel or pilot control pods. |
| Y___ N___ | Standard seat shall be covered with vinyl with open canopy models or cloth covered Mylar in enclosed cab models. |
| Y___ N___ | Optional heated seat shall be available with enclosed cab |
| Y___ N___ | With doors and windows closed, machine operating at maximum governed speed unit shall have a maximum operator sound exposure Leq of 79 dB(A) according to SAE J1166. |
| Y___ N___ | Stabilizer controls shall be conveniently located to the operator's left side/hand. |
| Y___ N___ | Tilt steering wheel shall be standard for operator comfort. |
| Y___ N___ | Optional tilt and teleschoping steering wheel shall be available for additional operator comfort |
| Y___ N___ | Canopy models shall have an optional fan available |
| Y___ N___ | Cab shall have an optional air conditioner that provides the operator with a choice of fresh outside air drawn through filters or recirculating cab air with HVAC recirculation selector |
| Y___ N___ | Cab shall have an optional heat settings |
| Y___ N___ | Cab shall be equipped with two doors and 6 opening windows and floor mat. |
| Y___ N___ | Operator's compartment shall feature laminated safety glass on front, windshield and tempered glass on all other windows. |
| Y___ N___ | Cab shall include factory-installed heater/defroster with multiple speed blower with the control in reach from the front and rear of the machine. |
| Y___ N___ | Heater will have a minimum rated capacity of 28,742 BTU and be equipped with a 365 cfm fan. |
| Y___ N___ | All removable glass panels shall be flat glass for easy and low cost service |
| Y___ N___ | All rear window sections shall stow overhead, inside the cab for maximum visibility, ventilation and operator comfort. |

430 BID SPECS

| | |
|----------------|---|
| Y___ N___ | All rear window sections shall open upwards and store overhead with outside portion facing upwards to keep water droplets and dirt from falling on operator. |
| Y___ N___ | Each side of the cab shall have two windows sharing a common hinge that are of approximately equal size, can be fastened together, then swung to either a front or rear securing point to maximize cross flow ventilation. |
| Y___ N___ | If equipped with an enclosed cab, front and rear windshield wipers/washers shall be standard. |
| Y___ N___ | If equipped with an enclosed cab, unit shall have a pantography front windshield wiper and intermittent rear windowshield wiper |
| Y___ N___ | Enclosed cab shall have a front window visor that extends entire width of window |
| Y___ N___ | Exhaust stack shall be located to the side an aligned with ROPS as to not obstruct operators vision. |
| BACKHOE | |
| Y___ N___ | Backhoe shall be center-pivot type complete with hydraulic stabilizers. |
| Y___ N___ | Maximum boom width shall be no wider than 10 inches (254 mm). |
| Y___ N___ | Backhoe shall come standard with a curved boom for its ability to work in confined areas and to reach over obstacles, allowing a minimum of 10.5" (265 mm) of clearance as measured in the deepest point from a plane, subtended through the axis of the rotation |
| Y___ N___ | Per SAE standards, rated bucket digging force shall be a minimum of 14,431 lb (64.19 kN) with a standard stick and 14,228 lb (63.29 kN) with an extendible stick. |
| Y___ N___ | Per SAE standards, stick-digging force shall be a minimum of 9,781 lbs (43.5 kN) with a standard stick and 9,757,lb (43.4 kN) with a fully retracted extendible stick. |
| Y___ N___ | Backhoe reach, from the swing pivot, shall be no less than 18'5" (5612 mm) with a standard stick and 21'10" (6652 mm) with a fully extended, extendible stick. |
| Y___ N___ | Backhoe shall have a loading height of no less than 11'11" (3642 mm) with a standard stick. |
| Y___ N___ | Backhoe bucket shall have a minimum of 205 degrees of bucket rotation in a single pin position. |
| Y___ N___ | Backhoe shall have a minimum cushioned swing arc of 180 degrees. |
| Y___ N___ | Per SAE J31, backhoe stick lifting ability at 8 ft (2438 mm) shall be no less than 5961 lb (2704 kg) with a standard stick. |
| Y___ N___ | Per SAE J31, backhoe stick lifting ability at 8 ft (2438 mm) shall be no less than 5498 lb (2492 kg) with a fully retracted extendible stick. |
| Y___ N___ | Per SAE J31, backhoe boom lifting at 8 feet (2438 mm) shall be no less than 3700 lbs (1678 kg) with a standard stick. |
| Y___ N___ | Per SAE J31, backhoe boom lifting at 8 feet (2438 mm) shall be no less than 3241 lbs (1470 kg) with a fully retracted extendible stick. |
| Y___ N___ | Extendible stick shall be available. |
| Y___ N___ | Optional extendible stick shall be field adjusted in less than 30 minutes to eliminate excessive clearance, using simple hand tools |
| Y___ N___ | All sticks shall have serrated edges, at least 28" (760 mm) long, to help clamp objects securely with bucket. |
| Y___ N___ | All sticks shall be thumb-ready with thumb cylinder mounts and stops standard. Thumb must be able to be added without welding. |
| Y___ N___ | Extendible stick shall be self-lubricating, adjusted with shims, and require no grease. |
| Y___ N___ | Boom cylinder shall be exterior mounted for serviceability. |
| Y___ N___ | Stick cylinder shall be exterior mounted for serviceability. |
| Y___ N___ | Boom and stick shall be weld repairable. |
| Y___ N___ | Backhoe shall be equipped with a swing transport lock. |
| Y___ N___ | Backhoe shall be equipped with a boom lock that can be controlled from the seat. |
| Y___ N___ | Pattern changer shall be available for switching Backhoe and Excavator control patterns with an electric switch, located within the operator's station |
| Y___ N___ | Backhoe controls shall be available as pilot operated joystick controls with a standard pattern changer for SAE excavator or ISO backhoe control patterns. |

430 BID SPECS

| | |
|-------------------------------|--|
| Y___ N___ | Backhoe shall be controlled with adjustable excavator style pilot operated joystick controls. |
| Y___ N___ | Auxiliary controls shall be controlled by a electro-hydraulic thumb roller |
| Y___ N___ | Auto-up stabilizer controls shall be available. |
| Y___ N___ | Stabilizers shall be located on the side console for easy access whether facing front or rear. |
| Y___ N___ | Stabilizer guards shall be available to protect stabilizer cylinders from damage |
| Y___ N___ | Backhoe shall have stabilizer lock valves as standard equipment. |
| Y___ N___ | Flip over stabilizer pads shall have a dirt grouser. |
| Y___ N___ | Stabilizer spread in the operating position to the center of the pad shall be at least 10'10" (3310 mm). |
| Y___ N___ | Stabilizers shall be able to lift the machine high enough to clear tires, on concrete with street pads. |
| Y___ N___ | Swing trunnion shall be supported on each side by two bolts loaded in tension . |
| LOADER (SELECT BUCKET) | |
| Y___ N___ | Integrated Tool Carrier loader shall be controlled by pilot operated controller |
| Y___ N___ | A continuous flow button for the Integrated Tool Carrier shall be available to allow the operator to set the auxiliary hydraulic flow at any flow setting needed. |
| Y___ N___ | Machine shall have parallel lift for better load retention and improved material handling |
| Y___ N___ | Loader parallelism must be accomplished mechanically for reliability. Controlling the tilt cylinder for parallelism is not acceptable |
| Y___ N___ | Optional MP bucket shall be controlled by a purpose designed electro-hydraulic controller |
| Y___ N___ | Loader frame/linkage shall be of a tool carrier desing including a hydraulic quick coupler actuated from inside the cab |
| Y___ N___ | Operator shall be able to easily remove the loader bucket attachment and quickly couple a fork carriage, material handling arm, broom, or other various attachments without leavign the cab except to connect hydraulic lines |
| Y___ N___ | Loader bucket shall not roll back, and must not move under normal dig operations. |
| Y___ N___ | Loader shall have positive down pressure sufficient to lift tractor front end off level ground. |
| Y___ N___ | 1.25 CYD (0.96 m3) General Purpose bucket. Machine shall meet the following specifications Minimum breakout force of 10,405 lbs (46.3 kN) Minimum dump clearance of 8'9" (2679 mm) at full lift and 44 degree discharge Minimum dig depth of 4" (104 mm) Minimum hinge pin height 11'5" (3490 mm) Minimum lift capacity 8,193 lbs (3716 kg) Minimum rackback angle at Ground Level of 40 degrees |
| Y___ N___ | 1.31 CYD (1.00 m3) Multi Purpose bucket (4 in 1). Machine shall meet the following specifications Minimum breakout force of 11,117 lbs (49.5 kN) Minimum dump clearance of 9'0" (2745 mm) at full lift and 44 degree discharge Minimum dig depth of 4" (95 mm) Minimum hinge pin height 11'5" (3490 mm) Minimum lift capacity 7,542 lbs (3421 kg) Minimum rackback angle at Ground Level of 39 degrees |
| Y___ N___ | Loader shall be equipped with a return-to-dig mechanism. |
| Y___ N___ | Loader shall be equipped with a lift cylinder brace to mechanically hold the loader arms in the raised position. |
| Y___ N___ | Multi-Purpose bucket shall be operated by a thumb control on the loader joystick |
| Y___ N___ | Loader shall incorporate a steel bumper system to protect battery and engine components. |

430 BID SPECS

| | |
|-----------|--|
| Y___ N___ | Loader arm torque tube shall be constructed such that it is welded to each side of each loader arm section, providing maximum strength with minimal weld stress. |
| Y___ N___ | Loader linkage shall incorporate a single, full width main tower pin for maximum strength and load distribution. |
| Y___ N___ | Loader bucket shall be suitable for general purpose with heavy-duty characteristics including high strength wear material in the leading edges of the lower side corners, equaling the material properties of the base cutting edge. |
| Y___ N___ | Loader bucket base cutting edge shall be specially hardened steel, achieving Rockwell hardness of 50 or greater. |
| Y___ N___ | Loader bucket shall have a 2-piece or 3-piece bolt-on cutting edge for serviceability. |
| Y___ N___ | Loader bucket dump time shall be no more than 3.0 seconds at full raised position. |
| Y___ N___ | Loader bucket shall be self-leveling for truck loading spoil and equipped with a bucket tilt indicator. |
| Y___ N___ | Loader bucket lower time from full raised position to digging position shall be no more than 3.2 seconds. |
| Y___ N___ | Loader bucket raise time to full height shall be no more than 4.0 seconds. |

WORK TOOL OPTIONS

| | |
|-----------|---|
| Y___ N___ | The OEM shall offer buckets in varying widths and capacities. |
| Y___ N___ | Buckets shall be equipped with pin-on tooth tips that are exchanged whereby the pin retainers are diagonal or vertical, allowing them to be extracted or inserted with a hammer and punch only. |
| Y___ N___ | A quick coupler system shall be available (mechanical and hydraulic), which will pick up the 'direct mounted' worktools. |
| Y___ N___ | All backhoe sticks shall be made thumb-ready, allowing bolt-on installation of thumbs, cylinder, hydraulics and hardware without welding. |
| Y___ N___ | Material handling options shall include: pallet forks and material handling arm |
| Y___ N___ | Special application options shall include: dozer blades, snow plows, hydraulic booms, and loader rakes. |

SERVICEABILITY

| | |
|-----------|--|
| Y___ N___ | Hood release to be lockable and easily accessible from inside the cab. |
| Y___ N___ | Engine oil, transmission oil, hydraulic oil, brake fluid, washer fluid, coolant, engine air filter, and engine air filter monitor shall all be consolidated service points, accessible under the hood with loader arms down. |
| Y___ N___ | Entire machine cooling package, including radiator, transmission oil cooler, hydraulic oil cooler, fuel cooler and ATAAC shall be easily accessible without use of tools. |
| Y___ N___ | Water and sediment shall be drained from the fuel / water filter from a standing position without tools. |
| Y___ N___ | The battery(ies) shall be accessible without the use of hand tools to remove panels, toolboxes, etc. |
| Y___ N___ | Unit shall come standard with machine jump posts |
| Y___ N___ | The swing frame shall have replaceable bushings installed in the pin joints for the boom, swing cylinder rod ends and swing post. |
| Y___ N___ | Swing cast shall utilize serrated pins and dimpled bearings for grease rotation |
| Y___ N___ | Machine shall have easily accessible jumper posts to aid in jump-starting machine or other machines. |
| Y___ N___ | The hydraulic tank shall be drained through a petcock and drain hose, without need for hand tools. |
| Y___ N___ | The rear axle shall have brake wear check ports, allowing access to inspect brake pad wear. |
| Y___ N___ | The machine will be equipped with an electronic diagnostic port within the operator station, allowing service codes to be downloaded and electronic parameters to be adjusted. |
| Y___ N___ | Fuel tank shall contain a debris screen |

430 BID SPECS

| | |
|--|---|
| <input type="checkbox"/> <input type="checkbox"/> | Machine fault codes shall be accessible from LCD screen |
| Y <input type="checkbox"/> N <input type="checkbox"/> | The unit shall be provided with a master electrical disconnect switch. |
| Y <input type="checkbox"/> N <input type="checkbox"/> | Optional extendible stick shall be field adjustable using common hand tools. |
| MINIMUM SERVICE FILL CAPACITIES | |
| Y <input type="checkbox"/> N <input type="checkbox"/> | Standard front axle capacity (4WD) shall not be less than 2.9 gallons (11 L), with planetary capacity no less than .2 gallons (.7L). |
| Y <input type="checkbox"/> N <input type="checkbox"/> | Standard rear axle capacity shall not be less than 4.4 gallons (16.5 L). |
| Y <input type="checkbox"/> N <input type="checkbox"/> | Standard high-ambient cooling system capacity shall not be less than 5.9 gallons (22.5 L). |
| Y <input type="checkbox"/> N <input type="checkbox"/> | Standard engine oil with filter capacity shall not be less than 2.3 gallons (8.8 L). |
| Y <input type="checkbox"/> N <input type="checkbox"/> | Standard fuel tank capacity shall not be less than 42 gallons (160 L) |
| Y <input type="checkbox"/> N <input type="checkbox"/> | Standard diesel exhaust fluid tank capacity shall not be less than 5 gallons (19 L) |
| Y <input type="checkbox"/> N <input type="checkbox"/> | Standard hydraulic system capacity shall not be less than 25.1 gallons (95 L). |
| Y <input type="checkbox"/> N <input type="checkbox"/> | Standard hydraulic tank capacity shall not be less than 10.6 gallons (40 L). |
| Y <input type="checkbox"/> N <input type="checkbox"/> | Standard transmission (2WD, Power Shuttle) capacity shall not be less than 4.0 gallons (15 L) |
| Y <input type="checkbox"/> N <input type="checkbox"/> | Standard transmission (4WD, Power Shuttle) capacity shall not be less than 4.0 gallons (15 L) |
| Y <input type="checkbox"/> N <input type="checkbox"/> | Optional transmission (2WD, Autoshift) capacity shall not be less than 5.0 gallons (19 L) |
| OWNING AND OPERATING COSTS | |
| Y <input type="checkbox"/> N <input type="checkbox"/> | Front axles shall have sealed king pin and center pendulum bearings. |
| Y <input type="checkbox"/> N <input type="checkbox"/> | Driveshaft universal joints shall be maintenance free. |
| Y <input type="checkbox"/> N <input type="checkbox"/> | Standard fill hydraulic oil must be Advanced HYDO 10 with up to 6000hr service interval in typical applications. |
| Y <input type="checkbox"/> N <input type="checkbox"/> | Load Sensing Variable Displacement pump shall be standard for optimized fuel efficiency and performance. |
| Y <input type="checkbox"/> N <input type="checkbox"/> | Front and Rear Axle Oil change shall have a 1000- hour change interval for lowering operating maintenance cost |
| Y <input type="checkbox"/> N <input type="checkbox"/> | Cooling System shall have a 12,000-hour change interval for lowering operating maintenance cost |
| Y <input type="checkbox"/> N <input type="checkbox"/> | Engine shall have a 500-hour oil change interval for lowering operating maintenance cost. |
| ADDITIONAL FEATURES | |
| Y <input type="checkbox"/> N <input type="checkbox"/> | Machine shall be equipped with an optional, on-board machine communication system, recording and transmitting GPS, service hour reading, fuel tank reading and ignition status. |
| Y <input type="checkbox"/> N <input type="checkbox"/> | Machine shall be equipped with an optional, on-board machine communication system, recording and transmitting GPS, service hour reading, fuel tank reading and ignition status. |
| Y <input type="checkbox"/> N <input type="checkbox"/> | Optional front fenders shall be available from the OEM, articulating with the tires for maximum coverage. |
| Y <input type="checkbox"/> N <input type="checkbox"/> | An optional protective shield shall be available from the OEM for flying object applications, such as hammer use. |
| Y <input type="checkbox"/> N <input type="checkbox"/> | Machine shall be equipped with an optional OEM anti-theft system, utilizing programmable key identification. |
| | |
| <p><i>Bid specs are intended for use by North American buyers only and are subject to change. Model configuration may change depending on country of use. Please contact your local Caterpillar dealer for the most up-to-date specifications for your area.</i></p> | |

Effective with sales to the first user on or after November 1, 2010

CATERPILLAR LIMITED WARRANTY

For Selected Machine Models Designated by Caterpillar With 12 Month/Unlimited Hour Warranty Worldwide

Caterpillar Inc. or any of its subsidiaries ("Caterpillar") warrants the following products sold by it to be free from defects in material and workmanship:

This warranty does not apply to new replacement engines.

This warranty does not apply to selected models or new replacement engines designated by Caterpillar in India and China.

(In other areas different warranties may apply. Copies of applicable warranties may be obtained by writing to Caterpillar Inc., 100 N.E. Adams St., Peoria, IL 61629.)

• New earthmoving, construction, material handling, forestry product, paving product, compact wheel loader, mini hydraulic excavator, skid steer loader, multi terrain loader, and compact track loader machines designated by Caterpillar as having 12 -months/unlimited hour warranty. See your Cat dealer for a complete listing of covered models.

• Attachments/work tools installed on such machines prior to delivery (unless covered by the Cat Work Tool warranty statement or another manufacturer's warranty). Hammer tool points and compacting plates used on hydraulic hammers are not warranted.

An additional warranty against breakage is applicable to certain Cat ground engaging tools. An additional warranty against wear is applicable to all landfill compactor tips when used in residential waste landfills. Refer to the applicable warranty statements for coverage detail.

This warranty does not apply to Cat batteries, Mobil-trac belts, rubber tracks used on multi terrain loaders, compact track loaders, and mini hydraulic excavators, or Cat Work Tools, which are covered by other Caterpillar warranties.

This warranty is subject to the following:

Warranty Period

For new machines and work tools/attachments the warranty period is 12-months/unlimited hours, starting from date of delivery to the first user.

Note: For hydraulic line's quick connect/disconnect components sold on compact wheel loaders, mini hydraulic excavators, skid steer loaders, multi terrain loaders, and compact track loader machines, the warranty period is 50 hours starting from the date of delivery to the first user.

Caterpillar Responsibilities

If a defect in material or workmanship is found during the warranty period, Caterpillar will, during normal working hours and at a place of business of a Cat dealer or other source approved by Caterpillar:

• Provide (at Caterpillar's choice) new, remanufactured, or Caterpillar approved repaired parts or assembled components needed to correct the defect.

Note: New, remanufactured, or Caterpillar approved replacement parts provided under the terms of this warranty are warranted for the remainder of the warranty period applicable to the product in which installed as if such parts were original components of that product. Items replaced under this warranty become the property of Caterpillar.

• Replace lubricating oil, filters, antifreeze, and other service items made unusable by the defect.

• Provide reasonable and customary labor needed to correct the defect, except in the case of a new replacement engine originally installed by other than a Cat dealer or source approved by Caterpillar. In this

case, labor is limited to repair only, and removal and installation is the user's responsibility.

User Responsibilities

The user is responsible for:

- Providing proof of delivery date to the first user.
- Labor costs, except as stated under "Caterpillar Responsibilities."
- Transportation costs, except as stated under "Caterpillar Responsibilities."
- Premium or overtime labor costs.
- Parts shipping charges in excess of those, that are considered usual and customary.
- Local taxes, if applicable.
- Costs to investigate complaints, unless the problem is caused by a defect in Caterpillar material or workmanship.

• Giving timely notice of a warrantable failure and promptly making the product available for repair.

• Performance of the required maintenance (including use of proper fuel, oil, lubricants, and coolant) and items replaced due to normal wear and tear.

• Allowing Caterpillar access to all electronically stored data.

(continued on the reverse side....)

Limitations

Caterpillar is not responsible for:

- Failures resulting from any use or installation that Caterpillar judges improper.
- Failures resulting from attachments, accessory items, and parts not sold or approved by Caterpillar.
- Failures resulting from abuse, neglect, and/or improper repair.
- Failures resulting from user's delay in making the product available after being notified of a potential product problem.
- Failures resulting from unauthorized repair or adjustments, and unauthorized fuel setting changes.

For products operating outside of Australia, Fiji, Nauru, New Caledonia, New Zealand, Papua New Guinea, the Solomon Islands, and Tahiti, the following is applicable:

NEITHER THE FOREGOING EXPRESS WARRANTY NOR ANY OTHER WARRANTY BY CATERPILLAR, EXPRESS OR IMPLIED, IS APPLICABLE TO ANY ITEM CATERPILLAR SELLS THAT IS WARRANTED DIRECTLY TO THE USER BY ITS MANUFACTURER.

THIS WARRANTY IS EXPRESSLY IN LIEU OF ANY OTHER WARRANTIES, EXPRESS OR IMPLIED, INCLUDING ANY WARRANTY OF MERCHANTABILITY OR FITNESS FOR A PARTICULAR PURPOSE, EXCEPT CATERPILLAR EMISSION-RELATED COMPONENTS WARRANTY FOR NEW ENGINES, WHERE APPLICABLE. REMEDIES UNDER THIS WARRANTY ARE LIMITED TO THE PROVISION OF MATERIAL AND SERVICES, AS SPECIFIED HEREIN.

CATERPILLAR IS NOT RESPONSIBLE FOR INCIDENTAL OR CONSEQUENTIAL DAMAGES.

CATERPILLAR EXCLUDES ALL LIABILITY FOR OR ARISING FROM ANY NEGLIGENCE ON ITS PART OR ON THE PART OF ANY OF ITS EMPLOYEES, AGENTS, OR REPRESENTATIVES IN RESPECT OF THE MANUFACTURE OR SUPPLY OF GOODS OR THE PROVISION OF SERVICES RELATING TO THE GOODS.

IF OTHERWISE APPLICABLE, THE VIENNA CONVENTION ON CONTRACTS FOR THE INTERNATIONAL SALE OF GOODS IS EXCLUDED IN ITS ENTIRETY.

For products operating in Australia, Fiji, Nauru, New Caledonia, New Zealand, Papua New Guinea, the Solomon Islands, and Tahiti, the following is applicable:

THIS WARRANTY IS IN ADDITION TO WARRANTIES AND CONDITIONS IMPLIED BY STATUTE AND OTHER STATUTORY RIGHTS AND OBLIGATIONS THAT BY ANY APPLICABLE LAW CANNOT BE EXCLUDED, RESTRICTED OR MODIFIED ("MANDATORY RIGHTS"). ALL OTHER WARRANTIES OR CONDITIONS, EXPRESS OR IMPLIED (BY STATUTE OR OTHERWISE), ARE EXCLUDED.

NEITHER THIS WARRANTY NOR ANY OTHER CONDITION OR WARRANTY BY CATERPILLAR, EXPRESS OR IMPLIED (SUBJECT ONLY TO THE MANDATORY RIGHTS), IS APPLICABLE TO ANY ITEM CATERPILLAR SELLS THAT IS WARRANTED DIRECTLY TO THE USER BY ITS MANUFACTURER.

TO THE EXTENT PERMITTED UNDER THE MANDATORY RIGHTS, IF CATERPILLAR IS THE SUPPLIER TO THE USER, CATERPILLAR'S LIABILITY SHALL BE LIMITED AT ITS OPTION TO (a) IN THE CASE OF SERVICES, THE SUPPLY OF THE SERVICES AGAIN OR THE PAYMENT OF THE COST OF HAVING THE SERVICES SUPPLIED AGAIN, AND (b) IN THE CASE OF GOODS, THE REPAIR OR REPLACEMENT OF THE GOODS, THE SUPPLY OF EQUIVALENT GOODS, THE PAYMENT OF THE COST OF SUCH REPAIR OR REPLACEMENT OR THE ACQUISITION OF EQUIVALENT GOODS.

CATERPILLAR EXCLUDES ALL LIABILITY FOR OR ARISING FROM ANY NEGLIGENCE ON ITS PART OR ON THE PART OF ANY OF ITS EMPLOYEES, AGENTS OR REPRESENTATIVES IN RESPECT OF THE MANUFACTURE OR SUPPLY OF GOODS OR THE PROVISION OF SERVICES RELATING TO THE GOODS.

CATERPILLAR IS NOT LIABLE FOR INCIDENTAL OR CONSEQUENTIAL DAMAGES UNLESS IMPOSED UNDER MANDATORY RIGHTS.

IF OTHERWISE APPLICABLE, THE VIENNA CONVENTION (CONTRACTS FOR THE INTERNATIONAL SALE OF GOODS) IS EXCLUDED IN ITS ENTIRETY.

This warranty covers every major component of the products. Claims under this warranty should be submitted to a place of business of a Cat dealer or other source approved by Caterpillar. For further information concerning either the location to submit claims or Caterpillar as the issuer of this warranty, write Caterpillar Inc., 100 N. E. Adams St., Peoria, IL USA 61629.

CONTROL YOUR COSTS MINIMIZE YOUR RISKS

This plan safeguards your investments in new, used and rebuilt machines beyond the standard warranty period. It includes all parts and labor to protect you against failures caused by defects in materials and workmanship. With the Powertrain Equipment Protection Plan, you can increase the predictability of service and maintenance costs—and reduce unplanned downtime.

WHAT WE DO

- Perform necessary inspections to confirm eligibility
- Install parts approved by Caterpillar on covered repairs
- Validate your enrollment in the program

WHAT YOU DO

- Operate equipment according to the Cat Operation & Maintenance Manual (OMM)
- Have recommended preventive maintenance performed at intervals specified in the OMM
- Upon request, provide proof of preventive maintenance compliance (receipts, copies of work orders, invoices)
- Promptly provide the machine for repair in the event of a covered failure

| COVERED COMPONENTS | | | |
|--|------------------------------|--|--|
| Engine - Internal Components | Camshaft & Camshaft Bearings | Hydrostatic Pumps & Drive Motors | |
| Oil Cooler | Timing / Accessory Gears | Linkage / Lines Connected to Hystat Pump | |
| Manifolds | Timing Chain / Belt | Drive (pilot / eh) Control Valves | |
| Fan Motor | Inlet / Exhaust Valve | Bevel and Transfer Case | |
| Water Pump | Valve Cover & Base | | |
| Fuel Injection Pumps | Valve Spring & Guide | | |
| Injectors | Rocker Arm | | |
| Lift / Transfer Pump | Rocker Shaft Assembly | | |
| Senders / Solenoids / Sensors | Push Rod | | |
| Thermostat | Balancer | | |
| Flywheel & Torque Converter | Fuel Pump / Governor Drive | | |
| Engine Oil Filter Mount | Oil Pump | | |
| Turbocharger | Oil Pan Group | | |
| AC Compressor / Condenser | Fan & Fan Drive | | |
| Electronic Control Modules | | | |
| Oil Hoses / Lines (non-hydrostatic) | Transmissions | | |
| Cylinder Block | Hydraulic Controls | | |
| Piston | Transmission Oil Filter Base | | |
| Piston Rings | Transmission Gears | | |
| Piston & Connecting Rod | Final Drives/Planetary | | |
| Crankshaft, Main Bearings & Rod Bearings | Drive Shafts | | |
| | Transfer Case | | |
| | | Steering Clutch | |
| | | Steering Clutch & Brake Control Valve | |
| | | | |
| | | Hydraulic Oil Coolers | |

EXCLUSIONS

If a component is not listed, it may not be included in the plan. Other exclusions include:

- > Improper or abusive use of the machine
- > Lubricating oil, antifreeze, filters, consumables and other maintenance items replaced during the covered component repair, unless such items are rendered unusable by a covered component failure
- > Failures caused by normal wear-out
- > Freight charges for parts shipments
- > Travel time and mileage involved in getting to a job site
- > Hauling costs and / or retrieval costs
- > Overtime labor costs
- > Repair costs resulting from the failure of any non-covered components
- > Downtime loss
- > Equipment rental charges
- > Any incidental / consequential damages or costs incurred as a result of a covered component failure.
- > Modifications unless approved by Caterpillar

Examples of covered and excluded components or items are listed here. The actual dealer contract will govern. For a complete list of included components and more information on Cat Equipment Protection Plans, contact your local Cat dealer.



Employment Eligibility Verification

Welcome
Teresa Morton

User ID
TMOF6402

Last Login
09:22 AM - 01/06/2012 Log Out



Click any for help

[Home](#)

[My Cases](#)

[New Case](#)

[View Cases](#)

[Search Cases](#)

[My Profile](#)

[Edit Profile](#)

[Change Password](#)

[Change Security Questions](#)

[My Company](#)

[Edit Company Profile](#)

[Add New User](#)

[View Existing Users](#)

[Close Company Account](#)

[My Reports](#)

[View Reports](#)

[My Resources](#)

[View Essential Resources](#)

[Take Tutorial](#)

[View User Manual](#)

[Contact Us](#)

Company Information

Company Name: Thompson Tractor Co., Inc.

[View / Edit](#)

Company ID Number: 47130

Doing Business As (DBA)
Name:

DUNS Number:

Physical Location:

Address 1: 2401 Pinson Highway

Address 2:

City: Birmingham

State: AL

Zip Code: 35217

County: JEFFERSON

Mailing Address:

Address 1: P.O. Box 10367

Address 2:

City: Birmingham

State: AL

Zip Code: 35202-0367

Additional Information:

Employer Identification Number: 630377478

Total Number of Employees: 1,000 to 2,499

Parent Organization:

Administrator:

Organization Designation:

Employer Category:

NAICS Code: 423 - MERCHANT WHOLESALERS, DURABLE GOODS

[View / Edit](#)

Total Hiring Sites: 40

[View / Edit](#)

Total Points of Contact: 3

[View / Edit](#)

[View IDIU](#)

**Request for Taxpayer
Identification Number and Certification**

Give form to the
requester. Do not
send to the IRS.

Print or type
See specific instructions on page 2.

Name (as shown on your income tax return)

Thompson Tractor Co., Inc. DBA Thompson Power Systems, Thompson Lift Truck Co.

Business name, if different from above

and The Cat Rent Store

Check appropriate box: ☐ Individual/sole proprietor ☒ Corporation ☐ Partnership

☐ Limited liability company. Enter the tax classification (D=disregarded entity, C=corporation, P=partnership) ▶

☐ Other (see instructions) ▶

☒ Exempt
payee

Address (number, street, and apt. or suite no.)

P O Box 10367 2401 Pinson Hwy. Tarrant, AL 35217

City, state, and ZIP code

Birmingham, AL 35202-0367

Requester's name and address (optional)

List account number(s) here (optional)

Lockbox Remit To: P O Box 934085, Atlanta, GA 31193-4005

Part I Taxpayer Identification Number (TIN)

Enter your TIN in the appropriate box. The TIN provided must match the name given on Line 1 to avoid backup withholding. For individuals, this is your social security number (SSN). However, for a resident alien, sole proprietor, or disregarded entity, see the Part I Instructions on page 3. For other entities, it is your employer identification number (EIN). If you do not have a number, see *How to get a TIN* on page 3.

Note. If the account is in more than one name, see the chart on page 4 for guidelines on whose number to enter.

Social security number

or

Employer identification number

63 : 0377478

Part II Certification

Under penalties of perjury, I certify that:

1. The number shown on this form is my correct taxpayer identification number (or I am waiting for a number to be issued to me), and
2. I am not subject to backup withholding because: (a) I am exempt from backup withholding, or (b) I have not been notified by the Internal Revenue Service (IRS) that I am subject to backup withholding as a result of a failure to report all interest or dividends, or (c) the IRS has notified me that I am no longer subject to backup withholding, and
3. I am a U.S. citizen or other U.S. person (defined below).

Certification Instructions. You must cross out item 2 above if you have been notified by the IRS that you are currently subject to backup withholding because you have failed to report all interest and dividends on your tax return. For real estate transactions, item 2 does not apply. For mortgage interest paid, acquisition or abandonment of secured property, cancellation of debt, contributions to an individual retirement arrangement (IRA), and generally, payments other than interest and dividends, you are not required to sign the Certification, but you must provide your correct TIN. See the instructions on page 4.

Sign
Here

Signature of
U.S. person ▶

Linda L. Duncan, Controller

Date ▶

General Instructions

Section references are to the Internal Revenue Code unless otherwise noted.

Purpose of Form

A person who is required to file an information return with the IRS must obtain your correct taxpayer identification number (TIN) to report, for example, income paid to you, real estate transactions, mortgage interest you paid, acquisition or abandonment of secured property, cancellation of debt, or contributions you made to an IRA.

Use Form W-9 only if you are a U.S. person (including a resident alien), to provide your correct TIN to the person requesting it (the requester) and, when applicable, to:

1. Certify that the TIN you are giving is correct (or you are waiting for a number to be issued),
2. Certify that you are not subject to backup withholding, or
3. Claim exemption from backup withholding if you are a U.S. exempt payee. If applicable, you are also certifying that as a U.S. person, your allocable share of any partnership income from a U.S. trade or business is not subject to the withholding tax on foreign partners' share of effectively connected income.

Note. If a requester gives you a form other than Form W-9 to request your TIN, you must use the requester's form if it is substantially similar to this Form W-9.

Definition of a U.S. person. For federal tax purposes, you are considered a U.S. person if you are:

- An individual who is a U.S. citizen or U.S. resident alien,
- A partnership, corporation, company, or association created or organized in the United States or under the laws of the United States,
- An estate (other than a foreign estate), or
- A domestic trust (as defined in Regulations section 301.7701-7).

Special rules for partnerships. Partnerships that conduct a trade or business in the United States are generally required to pay a withholding tax on any foreign partners' share of income from such business. Further, in certain cases where a Form W-9 has not been received, a partnership is required to presume that a partner is a foreign person, and pay the withholding tax. Therefore, if you are a U.S. person that is a partner in a partnership conducting a trade or business in the United States, provide Form W-9 to the partnership to establish your U.S. status and avoid withholding on your share of partnership income.

The person who gives Form W-9 to the partnership for purposes of establishing its U.S. status and avoiding withholding on its allocable share of net income from the partnership conducting a trade or business in the United States is in the following cases:

- The U.S. owner of a disregarded entity and not the entity.

Company ID Number: 47130

THE E-VERIFY PROGRAM FOR EMPLOYMENT VERIFICATION

MEMORANDUM OF UNDERSTANDING

ARTICLE I

PURPOSE AND AUTHORITY

This Memorandum of Understanding (MOU) sets forth the points of agreement between the Social Security Administration (SSA), the Department of Homeland Security (DHS) and **Thompson Tractor Co., Inc.** (Employer) regarding the Employer's participation in the Employment Eligibility Verification Program (E-Verify). E-Verify is a program in which the employment eligibility of all newly hired employees will be confirmed after the Employment Eligibility Verification Form (Form I-9) has been completed.

Authority for the E-Verify program is found in Title IV, Subtitle A, of the Illegal Immigration Reform and Immigrant Responsibility Act of 1996 (IIRIRA), Pub. L. 104-208, 110 Stat. 3009, as amended (8 U.S.C. § 1324a note).

ARTICLE II

FUNCTIONS TO BE PERFORMED

A. RESPONSIBILITIES OF THE SSA

1. Upon completion of the Form I-9 by the employee and the Employer, and provided the Employer complies with the requirements of this MOU, SSA agrees to provide the Employer with available information that allows the Employer to confirm the accuracy of Social Security Numbers provided by all newly hired employees and the employment authorization of U.S. citizens.
2. The SSA agrees to provide to the Employer appropriate assistance with operational problems that may arise during the Employer's participation in the E-Verify program. The SSA agrees to provide the Employer with names, titles, addresses, and telephone numbers of SSA representatives to be contacted during the E-Verify process.
3. The SSA agrees to safeguard the information provided by the Employer through the E-Verify program procedures, and to limit access to such information, as is appropriate by law, to individuals responsible for the verification of Social Security Numbers and for evaluation of the E-Verify program or such other persons or entities who may be authorized by the SSA as governed by the Privacy Act (5 U.S.C. § 552a), the Social Security Act (42 U.S.C. 1306(a)), and SSA regulations (20 CFR Part 401).
4. SSA agrees to establish a means of automated verification that is designed (in conjunction with DHS's automated system if necessary) to provide confirmation or tentative nonconfirmation of U.S. citizens' employment eligibility and accuracy of SSA records for both citizens and aliens within 3 Federal Government work days of the initial inquiry.

Company ID Number: 47130

5. SSA agrees to establish a means of secondary verification (including updating SSA records as may be necessary) for employees who contest SSA tentative nonconfirmations that is designed to provide final confirmation or nonconfirmation of U.S. citizens' employment eligibility and accuracy of SSA records for both citizens and aliens within 10 Federal Government work days of the date of referral to SSA, unless SSA determines that more than 10 days may be necessary. In such cases, SSA will provide additional verification instructions.

B. RESPONSIBILITIES OF THE DEPARTMENT OF HOMELAND SECURITY

1. Upon completion of the Form I-9 by the employee and the Employer and after SSA verifies the accuracy of SSA records for aliens through E-Verify, DHS agrees to provide the Employer access to selected data from DHS's database to enable the Employer to conduct:

- Automated verification checks on newly hired alien employees by electronic means, and
- Photo verification checks (when available) on newly hired alien employees.

2. DHS agrees to provide to the Employer appropriate assistance with operational problems that may arise during the Employer's participation in the E-Verify program. DHS agrees to provide the Employer names, titles, addresses, and telephone numbers of DHS representatives to be contacted during the E-Verify process.

3. DHS agrees to provide to the Employer a manual (the E-Verify Manual) containing instructions on E-Verify policies, procedures and requirements for both SSA and DHS, including restrictions on the use of E-Verify.. DHS agrees to provide training materials on E-Verify.

4. DHS agrees to provide to the Employer a notice, which indicates the Employer's participation in the E-Verify program. DHS also agrees to provide to the Employer anti-discrimination notices issued by the Office of Special Counsel for Immigration-Related Unfair Employment Practices (OSC), Civil Rights Division, and U.S. Department of Justice.

5. DHS agrees to issue the Employer a user identification number and password that permits the Employer to verify information provided by alien employees with DHS's database.

6. DHS agrees to safeguard the information provided to DHS by the Employer, and to limit access to such information to individuals responsible for the verification of alien employment eligibility and for evaluation of the E-Verify program, or to such other persons or entities as may be authorized by applicable law. Information will be used only to verify the accuracy of Social Security Numbers and employment eligibility, to enforce the Immigration and Nationality Act and federal criminal laws, and to ensure accurate wage reports to the SSA.

7. DHS agrees to establish a means of automated verification that is designed (in conjunction with SSA verification procedures) to provide confirmation or tentative nonconfirmation of employees' employment eligibility within 3 Federal Government work days of the initial inquiry.

Company ID Number: 47130

8. DHS agrees to establish a means of secondary verification (including updating DHS records as may be necessary) for employees who contest DHS tentative nonconfirmations and photo non-match tentative nonconfirmations that is designed to provide final confirmation or nonconfirmation of the employees' employment eligibility within 10 Federal Government work days of the date of referral to DHS, unless DHS determines that more than 10 days may be necessary. In such cases, DHS will provide additional verification instructions.

C. RESPONSIBILITIES OF THE EMPLOYER

1. The Employer agrees to display the notices supplied by DHS in a prominent place that is clearly visible to prospective employees.

2. The Employer agrees to provide to the SSA and DHS the names, titles, addresses, and telephone numbers of the Employer representatives to be contacted regarding E-Verify.

3. The Employer agrees to become familiar with and comply with the E-Verify Manual.

4. The Employer agrees that any Employer Representative who will perform employment verification queries will complete the E-Verify Tutorial before that individual initiates any queries.

A. The employer agrees that all employer representatives will take the refresher tutorials initiated by the E-Verify program as a condition of continued use of E-Verify.

B. Failure to complete a refresher tutorial will prevent the employer from continued use of the program.

5. The Employer agrees to comply with established Form I-9 procedures, with two exceptions:

- If an employee presents a "List B" identity document, the Employer agrees to only accept "List B" documents that contain a photo. (List B documents identified in 8 C.F.R. § 274a.2 (b) (1) (B)) can be presented during the Form I-9 process to establish identity).
- If an employee presents a DHS Form I-551 (Permanent Resident Card) or Form I-766 (Employment Authorization Document) to complete the Form I-9, the Employer agrees to make a photocopy of the document and to retain the photocopy with the employee's Form I-9. The employer will use the photocopy to verify the photo and to assist the Department with its review of photo non-matches that are contested by employees. Note that employees retain the right to present any List A, or List B and List C, documentation to complete the Form I-9. DHS may in the future designate other documents that activate the photo screening tool.

6. The Employer understands that participation in E-Verify does not exempt the Employer from the responsibility to complete, retain, and make available for inspection Forms I-9 that relate to its employees, or from other requirements of applicable regulations or laws, except for the following modified requirements applicable by reason of the Employer's participation in E-Verify: (1) identity documents must have photos, as described in paragraph 5 above; (2) a

Company ID Number: 47130

rebuttable presumption is established that the Employer has not violated section 274A(a)(1)(A) of the Immigration and Nationality Act (INA) with respect to the hiring of any individual if it obtains confirmation of the identity and employment eligibility of the individual in compliance with the terms and conditions of E-Verify ; (3) the Employer must notify DHS if it continues to employ any employee after receiving a final nonconfirmation, and is subject to a civil money penalty between \$500 and \$1,000 for each failure to notify DHS of continued employment following a final nonconfirmation; (4) the Employer is subject to a rebuttable presumption that it has knowingly employed an unauthorized alien in violation of section 274A(a)(1)(A) if the Employer continues to employ any employee after receiving a final nonconfirmation; and (5) no person or entity participating in E-Verify is civilly or criminally liable under any law for any action taken in good faith on information provided through the confirmation system. DHS reserves the right to conduct Form I-9 compliance inspections during the course of E-Verify, as well as to conduct any other enforcement activity authorized by law.

7. The Employer agrees to initiate E-Verify verification procedures within 3 Employer business days after each employee has been hired (but after both sections 1 and 2 of the Form I-9 have been completed), and to complete as many (but only as many) steps of the E-Verify process as are necessary according to the E-Verify Manual. The Employer is prohibited from initiating verification procedures before the employee has been hired and the Form I-9 completed. If the automated system to be queried is temporarily unavailable, the 3-day time period is extended until it is again operational in order to accommodate the Employer's attempting, in good faith, to make inquiries during the period of unavailability. In all cases, the Employer must use the SSA verification procedures first, and use DHS verification procedures and photo screening tool only after the the SSA verification response has been given.

8. The Employer agrees not to use E-Verify procedures for pre-employment screening of job applicants, support for any unlawful employment practice, or any other use not authorized by this MOU. The Employer must use E-Verify for all new employees and will not verify only certain employees selectively. The Employer agrees not to use E-Verify procedures for re-verification, or for employees hired before the date this MOU is in effect. The Employer understands that if the Employer uses E-Verify procedures for any purpose other than as authorized by this MOU, the Employer may be subject to appropriate legal action and the immediate termination of its access to SSA and DHS information pursuant to this MOU.

9. The Employer agrees to follow appropriate procedures (see Article III.B. below) regarding tentative nonconfirmations, including notifying employees of the finding, providing written referral instructions to employees, allowing employees to contest the finding, and not taking adverse action against employees if they choose to contest the finding. Further, when employees contest a tentative nonconfirmation based upon a photo non-match, the Employer is required to take affirmative steps (see Article III.B. below) to contact DHS with information necessary to resolve the challenge.

10. The Employer agrees not to take any adverse action against an employee based upon the employee's employment eligibility status while SSA or DHS is processing the verification request unless the Employer obtains knowledge (as defined in 8 C.F.R. § 274a.1 (l)) that the employee is not work authorized. The Employer understands that an initial inability of the SSA or DHS automated verification to verify work authorization, a tentative nonconfirmation, or the finding of

Company ID Number: 47130

a photo non-match, does not mean, and should not be interpreted as, an indication that the employee is not work authorized. In any of the cases listed above, the employee must be provided the opportunity to contest the finding, and if he or she does so, may not be terminated or suffer any adverse employment consequences until and unless secondary verification by SSA or DHS has been completed and a final nonconfirmation has been issued. If the employee does not choose to contest a tentative nonconfirmation or a photo non-match, then the Employer can find the employee is not work authorized and take the appropriate action.

11. The Employer agrees to comply with section 274B of the INA by not discriminating unlawfully against any individual in hiring, firing, or recruitment or referral practices because of his or her national origin or, in the case of a protected individual as defined in section 274B(a)(3) of the INA, because of his or her citizenship status. The Employer understands that such illegal practices can include selective verification or use of E-Verify, discharging or refusing to hire eligible employees because they appear or sound "foreign", and premature termination of employees based upon tentative nonconfirmations, and that any violation of the unfair immigration-related employment practices provisions of the INA could subject the Employer to civil penalties pursuant to section 274B of the INA and the termination of its participation in E-Verify. If the Employer has any questions relating to the anti-discrimination provision, it should contact OSC at 1-800-255-7688 or 1-800-237-2515 (TDD).

12. The Employer agrees to record the case verification number on the employee's Form I-9 or to print the screen containing the case verification number and attach it to the employee's Form I-9.

13. The Employer agrees that it will use the information it receives from the SSA or DHS pursuant to E-Verify and this MOU only to confirm the employment eligibility of newly-hired employees after completion of the Form I-9. The Employer agrees that it will safeguard this information, and means of access to it (such as PINS and passwords) to ensure that it is not used for any other purpose and as necessary to protect its confidentiality, including ensuring that it is not disseminated to any person other than employees of the Employer who are authorized to perform the Employer's responsibilities under this MOU.

14. The Employer acknowledges that the information which it receives from SSA is governed by the Privacy Act (5 U.S.C. § 552a (i) (1) and (3)) and the Social Security Act (42 U.S.C. 1306(a)), and that any person who obtains this information under false pretenses or uses it for any purpose other than as provided for in this MOU may be subject to criminal penalties.

15. The Employer agrees to allow DHS and SSA, or their authorized agents or designees, to make periodic visits to the Employer for the purpose of reviewing E-Verify -related records, i.e., Forms I-9, SSA Transaction Records, and DHS verification records, which were created during the Employer's participation in the E-Verify Program. In addition, for the purpose of evaluating E-Verify, the Employer agrees to allow DHS and SSA or their authorized agents or designees, to interview it regarding its experience with E-Verify, to interview employees hired during E-Verify use concerning their experience with the pilot, and to make employment and E-Verify related records available to DHS and the SSA, or their designated agents or designees. Failure to comply with the terms of this paragraph may lead DHS to terminate the Employer's access to E-Verify.

Company ID Number: 47130

ARTICLE III

REFERRAL OF INDIVIDUALS TO THE SSA AND THE DEPARTMENT OF HOMELAND SECURITY

A. REFERRAL TO THE SSA

1. If the Employer receives a tentative nonconfirmation issued by SSA, the Employer must print the tentative nonconfirmation notice as directed by the automated system and provide it to the employee so that the employee may determine whether he or she will contest the tentative nonconfirmation.
2. The Employer will refer employees to SSA field offices only as directed by the automated system based on a tentative nonconfirmation, and only after the Employer records the case verification number, reviews the input to detect any transaction errors, and determines that the employee contests the tentative nonconfirmation. The Employer will transmit the Social Security Number to SSA for verification again if this review indicates a need to do so. The Employer will determine whether the employee contests the tentative nonconfirmation as soon as possible after the Employer receives it.
3. If the employee contests an SSA tentative nonconfirmation, the Employer will provide the employee with a referral letter and instruct the employee to visit an SSA office to resolve the discrepancy within 8 Federal Government work days. The Employer will make a second inquiry to the SSA database using E-Verify procedures on the date that is 10 Federal Government work days after the date of the referral in order to obtain confirmation, or final nonconfirmation, unless otherwise instructed by SSA or unless SSA determines that more than 10 days is necessary to resolve the tentative nonconfirmation..
4. The Employer agrees not to ask the employee to obtain a printout from the Social Security Number database (the Numident) or other written verification of the Social Security Number from the SSA.

B. REFERRAL TO THE DEPARTMENT OF HOMELAND SECURITY

1. If the Employer receives a tentative nonconfirmation issued by DHS, the Employer must print the tentative nonconfirmation notice as directed by the automated system and provide it to the employee so that the employee may determine whether he or she will contest the tentative nonconfirmation.
2. If the Employer finds a photo non-match for an alien who provides a document for which the automated system has transmitted a photo, the employer must print the photo non-match tentative nonconfirmation notice as directed by the automated system and provide it to the employee so that the employee may determine whether he or she will contest the finding.
3. The Employer agrees to refer individuals to DHS only when the employee chooses to contest a tentative nonconfirmation received from DHS automated verification process or when

Company ID Number: 47130

the Employer issues a tentative nonconfirmation based upon a photo non-match. The Employer will determine whether the employee contests the tentative nonconfirmation as soon as possible after the Employer receives it.

4. If the employee contests a tentative nonconfirmation issued by DHS, the Employer will provide the employee with a referral letter and instruct the employee to contact the Department through its toll-free hotline within 8 Federal Government work days.

5. If the employee contests a tentative nonconfirmation based upon a photo non-match, the Employer will provide the employee with a referral letter to DHS. DHS will electronically transmit the result of the referral to the Employer within 10 Federal Government work days of the referral unless it determines that more than 10 days is necessary.

6. The Employer agrees that if an employee contests a tentative nonconfirmation based upon a photo non-match, the Employer will send a copy of the employee's Form I-551 or Form I-766 to DHS for review by:

- Scanning and uploading the document, or
- Sending a photocopy of the document by an express mail account (furnished and paid for by DHS).

7. The Employer understands that if it cannot determine whether there is a photo match/non-match, the Employer is required to forward the employee's documentation to DHS by scanning and uploading, or by sending the document as described in the preceding paragraph, and resolving the case as specified by the Immigration Services Verifier at DHS who will determine the photo match or non-match.

ARTICLE IV

SERVICE PROVISIONS

The SSA and DHS will not charge the Employer for verification services performed under this MOU. The Employer is responsible for providing equipment needed to make inquiries. To access the E-Verify System, an Employer will need a personal computer with Internet access.

ARTICLE V

PARTIES

This MOU is effective upon the signature of all parties, and shall continue in effect for as long as the SSA and DHS conduct the E-Verify program unless modified in writing by the mutual consent of all parties, or terminated by any party upon 30 days prior written notice to the others. Any and all system enhancements to the E-Verify program by DHS or SSA, including but not limited to the E-Verify checking against additional data sources and instituting new verification procedures, will be covered under this MOU and will not cause the need for a supplemental MOU that outlines these changes. DHS agrees to train employers on all changes made to E-Verify through the use of mandatory refresher tutorials and updates to the E-Verify manual. Even

Company ID Number: 47130

without changes to E-Verify, the Department reserves the right to require employers to take mandatory refresher tutorials.

Termination by any party shall terminate the MOU as to all parties. The SSA or DHS may terminate this MOU without prior notice if deemed necessary because of the requirements of law or policy, or upon a determination by SSA or DHS that there has been a breach of system integrity or security by the Employer, or a failure on the part of the Employer to comply with established procedures or legal requirements. Some or all SSA and DHS responsibilities under this MOU may be performed by contractor(s), and SSA and DHS may adjust verification responsibilities between each other as they may determine.

Nothing in this MOU is intended, or should be construed, to create any right or benefit, substantive or procedural, enforceable at law by any third party against the United States, its agencies, officers, or employees, or against the Employer, its agents, officers, or employees.

Each party shall be solely responsible for defending any claim or action against it arising out of or related to E-Verify or this MOU, whether civil or criminal, and for any liability wherefrom, including (but not limited to) any dispute between the Employer and any other person or entity regarding the applicability of Section 403(d) of IIRIRA to any action taken or allegedly taken by the Employer.

The employer understands that the fact of its participation in E-Verify is not confidential information and may be disclosed as authorized or required by law and DHS or SSA policy, including but not limited to, Congressional oversight, E-Verify publicity and media inquiries, and responses to inquiries under the Freedom of Information Act (FOIA).

The foregoing constitutes the full agreement on this subject between the SSA, DHS, and the Employer.

The individuals whose signatures appear below represent that they are authorized to enter into this MOU on behalf of the Employer and DHS respectively.

To be accepted as a participant in E-Verify, you should only sign the Employer's Section of the signature page. If you have any questions, contact E-Verify Operations at 888-464-4218.

Employer Thompson Tractor Co., Inc.

Frank M Wright

Name (Please type or print)

Title

Electronically Signed

07/11/2007

Signature

Date

Department of Homeland Security – Verification Division

Company ID Number: 47130

**INFORMATION REQUIRED
FOR THE E-VERIFY PROGRAM**

Information relating to your Company:

Company Name: Thompson Tractor Co., Inc.

Company Facility Address: 2401 Pinson Highway
Birmingham, AL 35217

Company Alternate Address: P.O. Box 10367
Birmingham, AL 35202-0367

County or Parish: JEFFERSON

Employer Identification Number: 630377478

North American Industry
Classification Systems Code: 423

Parent Company: _____

Number of Employees: 1,000 to
2,499 Number of Sites Verified for: 5

Are you verifying for more than 1 site? If yes, please provide the number of sites verified for in each State.

- GEORGIA 5 site(s)

Information relating to the Program Administrator(s) for your Company on policy questions or operational problems:

| | | | |
|-------------------|-----------------------------------|-------------|------------------|
| Name: | Kimberly A Stark | | |
| Telephone Number: | (205) 849 - 4279 | Fax Number: | (205) 849 - 4565 |
| E-mail Address: | kimberlystark@thompsontractor.com | | |
| Name: | Frank M Wright | | |
| Telephone Number: | (205) 849 - 4267 | Fax Number: | (205) 849 - 4854 |
| E-mail Address: | frankwright@thompsontractor.com | | |

Company ID Number: 47130

**INFORMATION REQUIRED
FOR THE E-VERIFY PROGRAM**

Information relating to your Company:

Company Name: Thompson Tractor Co., Inc.

Company Facility Address: 2401 Pinson Highway
Birmingham, AL 35217

Company Alternate Address: P.O. Box 10367
Birmingham, AL 35202-0367

County or Parish: JEFFERSON

Employer Identification Number: 630377478

North American Industry
Classification Systems Code: 423

Parent Company: _____

Number of Employees: 1,000 to
2,499 Number of Sites Verified for: 5

Are you verifying for more than 1 site? If yes, please provide the number of sites verified for in each State.

- GEORGIA 5 site(s)

Information relating to the Program Administrator(s) for your Company on policy questions or operational problems:

Name: Kimberly A Stark
Telephone Number: (205) 849 - 4279 Fax Number: (205) 849 - 4565
E-mail Address: kimberlystark@thompsontractor.com

Name: Frank M Wright
Telephone Number: (205) 849 - 4267 Fax Number: (205) 849 - 4854
E-mail Address: frankwright@thompsontractor.com

Company ID Number: 47130

USCIS Verification Division

Name (Please type or print)

Title

Electronically Signed

07/11/2007

Signature

Date