

BID SUBMITTAL FORM
Alabama County Joint Bidding Program
Heavy Equipment – Bid Item: Medium Duty AWD Motorgrader

Company Name: WARRIOR TRACTOR & EQUIPMENT COMPANY, INC.
Address: 6801 MCFARLAND BLVD W
NORTHPORT, AL 35476
Bid Submitted by: DAVID PATTERSON
(Name of company representative)
Title: SALES MANAGER e-mail address: DAVIDP@WARRIORTRACTOR.COM
Phone: 205-339-0300 Fax: 205-333-0101

By submitting this bid, we agree:

The equipment model number identified below meets the bid specs for this bid item

That the bid price will be honored for all counties for the period from Jan. 1, 2021 to Dec. 31, 2021.

The equipment will be delivered at the bid price to all counties participating in the joint bid program.

The company acknowledges the freight preparation and delivery price is to be included in the total bid price for the standard machine.

The company representative listed above will be the contact person for purchasing this bid item under the joint bid program.

The bid is accompanied by a current catalog or model specification document for the model number identified below.

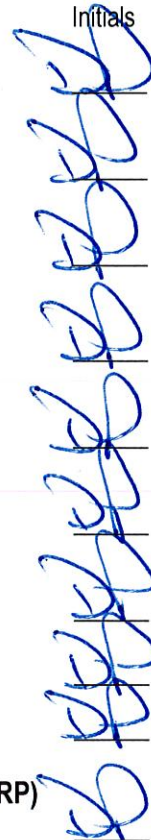
The bid is accompanied by a copy of the manufacturer's standard warranty as required in the bid specifications.

The bid includes the e-verify documentation required by Alabama law.

If awarded the bid, a performance bond will be provided upon request.

The bid documents include the **Manufacturer's Suggested Retail Price Sheet (MSRP) for the Standard Machine.**

Initials



MEDIUM DUTY MOTOR GRADER AWD

Total Bid Price for Standard Machine: \$ 267,443.00

(Total Bid Price for Standard Machine Includes Freight Preparation, Delivery and Standard Warranty Costs) *

Freight Preparation and Delivery: \$ 7,000.00

(Included in Standard Machine Bid Price)

Manufacturer's Suggested Retail Price for Standard Machine: \$ 467,834.00

Equipment Model #: JOHN DEERE 672G MOTOR GRADER

Description: MEDIUM DUTY AWD MOTOR GRADER

Signature of company representative submitting bid: 

Title: SALES MANAGER

* **NOTE:** Award will be made based on the total cost of the **Standard Machine**. The total cost of the standard machine is to include the freight preparation, delivery and standard warranty cost. Freight preparation, delivery will be excluded from the total bid price of the standard machine in determining the percentage discount for any available options.

BID SUBMITTAL FORM: OPTION COST SHEET

By submitting this bid, we agree:

To offer any available options at the percent difference between the Manufacturer's Suggested Retail Price Sheet and the actual bid price on the Standard Machine*



The bid documents include the **Manufacturer's Suggested Retail Price Sheet (MSRP)** for the Standard Machine



Equipment Model #: JOHN DEERE 672G

Description: MEDIUM DUTY AWD MOTOR GRADER

Signature of company representative submitting bid: 

Title: SALES MANAGER

***Note:** The percent difference between the **Manufacturer's Suggested Retail Price Sheet (MSRP)** for the standard machine as specified by these **Bid Specifications** and the actual price bid by the vendor will be calculated to determine the percentage discount to be applied to any available options. The bid price of the freight preparation, delivery cost shall be excluded in determining the percentage discount to be applied to available options. Any individual county may choose to add any available option to the standard machine at the percentage discount at the time of purchase.

BID SPECIFICATIONS FOR MEDIUM DUTY AWD MOTOR GRADER

GENERAL

These specifications shall be construed as the minimum acceptable standards for a medium duty AWD motor grader. Should the manufacturer's current production data or specifications exceed these standards, the manufacturer's standards shall be considered minimum and shall be furnished. All integral parts not specifically mentioned in the scope of these specifications that are necessary to provide a complete working unit shall be furnished. Additionally, the machine offered for bid shall include all standard manufacturer's equipment. The motor grader must be a new current production model and shall meet all EPA and other applicable standards at the time of manufacturer.

The use of specific names or numbers in the specifications is not intended to restrict the bidder or any seller or manufacturer, but is intended solely for the purpose of indicating the type, size, and quality of equipment considered best adapted to the uses of counties participating in this joint bid.

BID SUBMITTAL FORM

Each bidder must submit his or her bid on the Bid Submittal Form included in the invitation to bid package. All written warranties to be submitted shall be attached to the Bid Submittal Form.

BID PRICE

The price bid shall include all destination charges, delivery charges, title fees, rebates and all other applicable costs and refunds.

MANUALS

Each unit shall be provided with one (1) copy of the operator's manual, one (1) copy of the repair manual and one (1) copy of the current parts manual. Units will not be accepted for delivery until the manuals as outlined above are received by the purchaser.

REPLACEMENT PARTS AVAILABILITY

Parts must be available for 5 years or 7,500 hours of use for the piece of equipment bid. If replacement parts are not delivered within three (3) working days of an order being placed, the bidder will deliver an equivalent machine for the County to use at no cost to the County until such time as the parts are delivered to the County so it can affect repairs to its machine.

WARRANTY

Bidders shall submit a copy of the manufacturer's standard warranty. Warranty shall include service response time of maximum of 36 hours within notification by county.

Yes X No
Page #
Attachment X

ENGINE

The engine shall be a four cycle, six cylinder turbocharger. Engine shall be in current production and the engine displacement shall not be less than **548 cu. in** and shall develop, as standard, a rated net power of at least

200 HP in 1st gear (6WD on), **210 HP** in 2nd gear (6WD on),
225 HP in 3rd gear (6WD on), **230 HP** in 4th gear (6WD on),
240 HP in 5th gear (6WD on), **250 HP** in 6th gear (6WD on),
255 HP in 7th gear (6WD on) and **255 HP** in 8th gear.

Yes ☒ No ☐
Page # 18

Engine must be designed and manufactured by the machine manufacture.

STARTING SYSTEM

Shall be equipped with a **24-volt** electrical system with **130-amp** alternator.

Yes ☒ No ☐
Page # 19

TRANSMISSION

Shift on-the-go, full power shifting as well as inching capability and direct drive

Yes ☒ No ☐
Page # 18

Eight speeds forward and **Eight speeds reverse**

Yes ☒ No ☐
Page # 18

Low effort inching pedal

Yes ☒ No ☐
Page # 18

Over speed protection to prevent engine and transmission damage from premature downshifting and grade-induced over-speeding.

Yes ☒ No ☐
Page # 18

Also must be equipped with transmission guard.

Yes ☒ No ☐
Page # 30-31

FINAL DRIVE

The final drive shall be a tandem type with power being transmitted from the transmission to the ground all four rear tandem wheels. Inboard-mounted planetary sealed in cooled, filtered oil.

Yes ☒ No ☐
Page # 18

The final drive shall include a lock/unlock differential.

Yes ☒ No ☐
Page # 18

CONTROLS AND HYDRAULICS

Hydraulic system shall be load sensing closed center type with variable displacement piston pump.

Yes X No
Page # 19

Circle drive shall be protected against impact damage by an overload cushion valve or an accumulator blade lift.

Yes X No
Page # 30-31

BLADES

The moldboard shall be **14' x 24" x 7/8"** with hydraulic power tilt, hydraulic power side shift and replaceable end bits.

Yes X No
Page # 21,30-31

Moldboard blade range shall have minimum lift above ground of **19"** and Minimum right and left side vertical cutting angle of 90 degrees.

Yes X No
Page # 19

Shall also include reversible overlay end bits.

Yes X No
Page # 30-31

DRAWBAR AND CIRCLE

Drawbar shall be equipped with a slip clutch designed to protect the drawbar, circle and moldboard from horizontal shocks when the blade encounters hidden objects.

Yes X No
Page # 30-31

The circle shall be steel construction with **6** replaceable wear shoes

Yes X No
Page # 19

FRAME

The main frame shall be of an all welded box type construction. The frame must be capable of articulating **22 degree** left or right

Yes X No
Page # 18 & 19

The articulation joint shall be equipped with a locking device to prevent frame articulation while servicing or transporting the machine.

Yes X No
Page # 30-31

STEERING

The motor grader shall have a hydraulic steering system capable of providing stopped engine steering as required by SAE codes, J53 and J1511. A steering wheel must be provided.

Yes X No
Page # 30-31

TIRES

All six wheels shall be **10 in by 24 in** size multi-piece tire rims and shall provide mounting for **14.00 R24** tires.

Yes X No
Page # 21

Tires shall be Goodyear, Bridgestone/Firestone, or Michelin only, **14.00 x R24 12PR Bias Tires**.

Yes X No
Page # 21, ATTACH

BRAKES

The service brakes shall be foot operated, hydraulic power boosted sealed oil disc brakes on all four rear tandem wheels.

Yes X No
Page # 18

The service brakes shall be a dual brake system with accumulators for a secondary braking system for stopped engine braking.

Yes X No
Page # 18

SERVICE CAPABILITIES

Shall have 24/7 wireless uplink capability with location, utilization, dashboard alerts, fuel consumption, diagnostic codes, and hours, etc.

Yes X No
Page # ATTACH

Quick -service bank for transmission, hydraulic, engine oil, and engine coolant fluid changes.

Yes X No
Page # 30-31

Fluid sampling ports for engine oil and coolant, hydraulic, axle and transmission oil.

Yes X No
Page # 30-31

VANDAL PROTECTION/SAFETY

Shall have key-less start with multiple security codes. Vandal protection locking for: Cab doors, top tank radiator access door, engine coolant surge tank, hydraulic reservoir cap, batteries disconnect switch, fuel tank door and cap and toolbox.

Yes X No
Page # 30-31

OIL ANALYSIS

To be included at no cost for the duration of the purchased warranty period at intervals recommended by the manufacturer's warranty and maintenance schedule.

Yes X No
Page # ATTACH

WEIGHT (STANDARD OPERATING)

Minimum of **37,788** which includes enclosed ROPS cab (low profile) with factory installed air conditioner/heater (standard arrangement). This is factory specified operating weight only. No additional weights may be added for purpose of meeting these specifications.

Yes X No
Page # 20

672G MOTOR GRADER with 6WD

30-Aug-2020



Code	Description		
8450T	672G MOTOR GRADER with 6WD FOB Davenport, Ia.	1	\$343,616.00
<p>As not all option codes have field kits, please review your order option codes and available kits prior to placing a machine order Keep in mind that the following John Deere motor graders 770, 772, 870 & 872 offer optimized performance for high speed snow plowing applications.</p>			
Option Codes			
1140	John Deere PowerTech PSS 9.0L meets EPA FT4 Emi 255 Net Peak hp	1	\$54,196.00
<p>For use only in areas where EPA Final Tier 4 is required.Requires engine exhaust code 1830 or 1840.Automatic Exhaust Filter RegenerationAutomatic Hydraulic Reversing FanSeries Turbo ChargersCooled Exhaust Gas Recirculation4 Valves / CylinderWet Sleeve Cylinder LinersECO ModeAuto-Idle and Programmable Auto-ShutdownAutomatic Starter Overload Protection Electronically Controlled HPCR Fuel Delivery System, B20 Biodiesel CompatibleElectric Fuel Priming System10-Micron Primary Fuel Filter/Water Separator, 500 hour2-Micron Final Fuel Filter, 500 hourInline Fuel StrainerSpin-on Oil Filter, 500 hourOil crankcase filter, LifetimeAuto-Tensioned Serpentine Belt Under Hood Dual Element Air Cleaner with Restriction IndicatorEngine Intake Rotary Ejector Precleaner</p>			
1830	Engine Exhaust W/ Flat Black Stack (FT4 or Stage V o Requires engine code 1140.	1	No Added Cost
1410	Standard Fuel & Water Filtration	1	No Added Cost
1310	Quick Service Group	1	\$672.00

1020	Armrest Fingertip Controls	1	\$33,489.00
	Grade Pro Armrest Controls Include: * Fingertip controls with industry standard control pattern * Automated Cross Slope control * Integrated grade control (Contact TOPCON, Trimble, or Leica for full install requirements) * Return-to-Straight * Armrest steering control AND conventional steering wheel Requires alternator code 1220 or 1240 and cab code 5060 or 5070. Includes seat code 6140 and grade pro controls code 6650.		
5060	Grade Pro Low Cab w/ Lower Front and Side Opening	1	No Added Cost
	Requires configuration code 1020 or code 1030 and seat code 6140. Requires (1) T244325 bracket to optionally move monitor to the RH door post.		
8830	Rear Camera (R4)	1	No Added Cost
	Rear view camera with a dedicated monitor		
8210	Exterior Mounted Rearview Mirrors	1	No Added Cost
8420	No Radio	1	No Added Cost
8320	Less Lower Front Window Wiper & Wiper	1	No Added Cost
6030	No Powered Cab Air Precleaner	1	No Added Cost
6140	Grade Pro Premium Heated, Leather/Fabric, High-Wid	1	No Added Cost
	For use with cab codes 5060 & 5070. This seat does not include a headrest. If a headrest is desired, please order AT361342 from service parts.		
8730	No Sound Absorption Package	1	No Added Cost
	Requires engine code 1140.		
6550	Grade Pro Base Controls	1	No Added Cost
	Requires code 1020 OR 1030 Includes the following Base Hydraulic Functions: Rear Steer Circle Side shift Wheel Lean Right and Left hand Blade Lift w/ Float Circle Rotate Blade Side Shift Blade Tilt Speed-sensitive Lever Steer (also includes traditional steering wheel)		

6650	Grade Pro Controls - Left Side	1	No Added Cost
	Requires code 1020 or code 1030. Accompanies GRADE PRO CONTROLS - RIGHT SIDE order code selection.		
8510	Air Conditioner Refrigerant Charged	1	No Added Cost
9210	Decelerator	1	\$303.00
5815	Hydrau	1	No Added Cost
	Broad ambient operating temperatures. Operating range: -25°C to 50°C -13°F to 122°F		
1610	Hydraulic Pump Disconnect	1	\$188.00
	Required with engine code 1140.Required for Russia.		
170C	JDLINK Ultimate - 5 Year Subscription	1	No Added Cost
	Includes JDLINK hardware: integrated cab wiring harness, antenna, modular telematics gateway (MTG), and now includes all Ultimate Connectivity features – Wireless Data Transfer (WDT) enabling automatic data transfer from TimberMatic and Waratah H16 Measuring Systems to TimberManager and MyJohnDeere, supporting TimberOffice 5 Software. Additionally, Ultimate now includes Limited Internet features supporting optional ForestSight Solutions such as advance mapping systems and Remote Display Access (RDA) features supported by TeamViewer applications. JDLINK utilizes cellular and satellite technology infrastructure that is outside the control of John Deere. Changes to that infrastructure may require customers to purchase compatible JDLINK hardware to restore functionality. Includes 5 year subscription. Annual subscription renewal required after 5 years for continued functionality. JDLINK customer account must be created to access JDLINK Ultimate data. Go to www.StellarSupport.com to renew or update JDLINK subscriptions. Use of this service, and all rights and obligations of John Deere and the Customer (as identified in the applicable agreement), are governed by the terms and conditions outlined in the applicable Services and Software agreements available at www.JohnDeere.com/Agreements . If these terms and conditions are not agreeable do not proceed and do not use the service.		
1910	Blade Impact Absorption System	1	\$3,617.00
	Protects Moldboard and draft frame from impacts with Stationary objects		
2060	14 Ft. x 24 In. x 7/8 In. (4.27M x 610mm x 22mm) w/ 8	1	\$1,568.00
2820	Single Input Gearbox with Slip Clutch	1	\$2,751.00
	Slip clutch protects circle, circle drive gearbox and draft frame from damage when end of moldboard comes in contact with stationary objects. Slip clutch is integral to the circle drive gearbox assembly and allows the circle frame to rotate, avoiding damage to the machine, when the end of the moldboard comes in contact with an immovable object.		

9450	Reversible Overlay End Bits	1	\$510.00
	Not available for Russia.		
1235	130 amp Alternator	1	\$412.00
	Requires engine code 1140.		
7110	Transporting Lights (6 Halogen Lights)	1	No Added Cost
	Includes 2-high and 2-low beam halogen headlights plus 2 - reversing lights on rear grill.		
8120	24-to-12 Volt Converter (30 amps peak / 25 amps con	1	\$470.00
	Recommend code 8120 for additional 12 volt needs, such as business band or CB radios		
9298	Beacon with Flip Down Cab Beacon Bracket (RH)	1	\$680.00
	Includes beacon and bracket.		
	Order codes 9298 and 9299 for dual beacons.		
6750	Less Front Attachment	1	No Added Cost
6850	No Rear Attachment	1	No Added Cost
5510	Autoshift Transmission	1	\$1,874.00
5710	Transmission Solenoid Valve Guard	1	\$213.00
	Required with engine code 1140.		
	Required for Russia.		
	Recommended for snow plowing applications		
4417	Bridgestone VUT	1	\$23,275.00
7820	No Front Fenders	1	No Added Cost
2605	English Manual W/ English Labels & Decals	1	No Added Cost
2575	No Grade Control Base Kit Installed	1	No Added Cost
2775	No Topcon 3D GPS Grade Control System installed	1	No Added Cost

Total **\$467,834.00**

Manufacturer's Suggested List Price shown. Retail prices may vary by dealer. Unless stated otherwise, taxes, freight, setup, delivery and other dealer specific charges not included in the pricing. Options/items noted with anything other than price will have additional costs. Pricing, availability, and specifications subject to change without notice. Special program pricing may be available on certain models. See dealer for details. Prices shown are in U.S. dollars and valid only in the U.S.



JOHN DEERE

Current Date 26Aug2020

672G MOTOR GRADER with 6WD

672G Standard Equipment

VEHICLE COOLING:

Swing-Out, Cool-On-Demand, Hydraulic Fan (32 In.)

Enclosed Engine Fan and Fan Drive Guarding (Conforms to ISO 3457)

Heavy Duty Aluminum Coolers for Transmission, Axle, Hydraulic, Fuel, Charge Air, Radiator and A/C Condenser.

Engine Coolant Surge Tank Cool-Gard II Extended Life Engine Coolant -34 Degrees F (-37 Degrees

C)

TRANSMISSION:

John Deere Powershift Plus Direct Drive, Countershaft Powershift

Event Based Shifting (EBS) - Load Sensing Electronic Shift Modulation

Over speed Protection

Quick Disconnect Pressure Ports

Matched 8 Forward and 8 Reverse Speeds

Industry Standard U-Shape Shift Pattern

Transmission Neutral Lock with Park Start Safety Switch

Rubber Isolation Mounting to Reduce Noise and Vibration Independent Oil Reservoir, Filtration and Cooling System with:

31 GPM Transmission Gear Pump

2000 Hour Vertical Spin-On Filter

DUAL-PATH HYDROSTATIC

Steering

Electronic Throttle Control with Auto / Manual Modes

ECO Mode: limits engine rpms to 1900 in gears 1-5

15 Amp (24 V to 12 V W/ Continuous 10 amps)

Converter and (2) Power Ports

(1)Interior and (2)Exterior Mounted Rearview Mirrors (Conforms to SAE J985)

Air Vents on all Front and side Tinted Windows

Fixed Lower Front Tinted Window

Rear Window Electric Defroster

Laminated Upper Front Tinted Window w/ Sun Shade Band

Upper Front and Rear Windshield Washers with Intermittent Wipers

Molded Floor Mat

Coat Hook

Universal RH & LH Mounting Bracket

Cooler/Lunch Box Storage with Cup Holder

Operator's Manual Storage Front Sun Visor

ELECTRICAL:

24 Volt System

Alternator (dependent on engine emission and optional equipment)

Bypass Start Safety Cover on Starter

All Light and Wiper Switches have Solid State Electrical Power

Distribution System

Batteries (2), 1400 CCA with

Sensor Values

Calibrations

MENU DISPLAY:

Codes

Machine Settings

Diagnostics

Monitor Settings

HYDRAULIC SYSTEM:

PCLS (Pressure

Compensating Load Sensing)

Hydraulic System

Independent Hyd. Reservoir with Sight Glass

Independent Main Hydraulic filtration cooling system with:

56 GPM Main Hydraulic Axial Piston Pump

O-Ring Face Seal Connectors

Float control included with blade lifts

2000 Hour Vertical Spin-On Filter

STRUCTURE:

Main Frame with:

Double Ball-N-Socket Pivot Connection

Snow Wing Ready Frame

Midmount Scarifier Ready

Grade Control Mount Ready

Tapered Roller Bearing in

Bottom Articulation Joint

Tapered Roller Bearing King

Pins on Front Axle

Lift Eyes

Tiedowns

(20) NeverGrease Pin Joints for Saddle Linkage, Blade

Tilt,

Rear Steering and Lean

Cylinders

MOLDBOARD:

Patented Pre-Stressed 12 Ft.

6WD:	440 Minute Reserve Capacity	x 24 In. x 7/8 In. (3.66 M x 610 mm x 22 mm)
Variable Displacement Pumps	Positive Terminal Battery Covers	Moldboard with:
Axial Piston Drive Motors	Ground Level Electrical	6 In. x 5/8 In. (152 x 16 mm) Cutting Edge with
Operator Selected	Master Disconnect Switch	5/8 in. Reversible End Bits
Aggressiveness Control	Electric Fuel Shut off Switch	Quick Change Circle Wear
Operator Controlled Inching Capability	Transporting Lights w/LED	Inserts (All Nylon)
Operational In Gears 1-7	Signal and Marker Lights (4 Halogen	Quick Change and Adjustable
Forward and Reverse	Transport lights)	Heavy Duty Moldboard Side
Precision Mode in 1-3	Transporting Lights (4 Halogen Transport Lights).	Shift Wear
Forward	Includes LED turn signals on front frame, LED rear turn signals	Inserts
AXLE, BRAKES AND TANDEMS:	mounted on rear grille, front and rear LED marker lights, LED brake	Single Input Circle Drive
Teammate II Axle	lights and LED hazard warning lights.	Gearbox (non-slip)
Planetary Single Reduction Final Drives	Cab Pre-Wired (10 amp) for Beacon, Radio and Auxiliary Circuit	OVERALL VEHICLE:
Internal Self-Adjusting	Electric Forward Warning Horn (Conforms to ISO 9533)	Left Side Daily Service
Maintenance Free Wet Multi-Disk Brakes Inboard of Tandem Pivot	Back up Warning Alarm (Conforms to ISO 9533)	Engine and Service
Continuous Pressurized Filtered Oil Cooled Brakes	Sealed Switch Module with Function Indicators	Compartment Lights
Independent Oil Reservoir, Filtration and Cooling System with:	Multi-Function / Multi-Language LCD Color Monitor includes:	Hinged Engine Side Shields
6.7 GPM Axle Gear Pump	DIGITAL INSTRUMENTS	Tool Box with Tray
2000 Hour Vertical Spin-On Filter	ANALOG Display:	Articulation Joint Grease Bank
Primary and Secondary Service Brakes (Conforms to ISO 3450)	Hydraulic Oil Temperature	Articulated frame with Safety (ISO 10570) locking pin
Automatic Differential Lock with Override	Engine Coolant Temperature	Radiator Surge Tank Access Panel
Automatic Spring-Applied Hydraulic Released Parking Brake (Conforms to SAE J1026)	Transmission Oil Temperature	Bottom/Side Guards with Access Panels
14.0 R 24 Inch G2/L2 Single Star Radial Tires	Rear Steer Articulation Angle	(6) D.O.T. (392&393)
Slip Resistant Platforms on Tandems	Fuel Level	Permanent Tie Downs for transport
OPERATORS STATION:	DEF Level (FT4 Only)	Single Key Locks for Entire Vehicle
Low ROPS/FOPS Air Conditioned Cab (Conforms ROPS ISO 3471 / FOPS ISO 3449 Level II)	DIGITAL Display:	Ground Level Fuel Tank Filling (FT4 Only)
Rubber Isolation Frame Mounted	Engine RPM	Fluid Sampling Ports for Engine Oil, Engine Coolant, Hydraulic, Axle and Transmission Oils
Keyless Start with Multiple Security Modes	Transmission Gear Indicator	Vandal Protection Locking for:
Anti-Skid 3 Step Cab Access	Hour Meter	Service Compartments
Fabric Air Suspension Seat with Armrests and Headrest	Speedometer	Cab Doors
	Odometer	Radiator Surge Tank Access Door
	Outside Ambient Temperature	DEF Tank Door and Cap (FT4 Only)
	Integrated Job Timer and Stop Watch	Hydraulic Reservoir Cap
		*Battery Disconnect Switch
		Fuel Tank Door and Cap
		Tool Box
		Fuel tank, 110 gallon (416 L)
		Environmental Drains with

3 In., (76 mm)
Seat Belt w/Retractors
(Conforms to SAE J386)
Tilt Wheel and Control
Console with 5 Lock to Lock
Power

INDICATOR LIGHTS for
Standard and Selected
Options
INDICATOR LIGHTS for
Amber Caution and Red Stop

OPERATOR WARNING
MESSAGES
BUILT-IN DIAGNOSTICS:
Diagnostic Code Details

Hoses for Engine,
Transmission, Hydraulic,
Axle Oils and Engine Coolant

Remote Filter Bank for
Hydraulic, Transmission and
Axle Oils
Vehicle Side Reflectors

Required - You must select one from each category

▼ **BASE MACHINE**

FOB Davenport, Ia.

As not all option codes have field kits, please review your order option codes and available kits prior to placing a machine order

Description	Code	Price
672G MOTOR GRADER with 6WD	8450T	\$343,616.00

Keep in mind that the following John Deere motor graders 770, 772, 870 & 872 offer optimized performance for high speed snow plowing applications.

▼ **ENGINE**

Description	Code	Price
John Deere PowerTech PSS 9.0L meets EPA FT4 Emissions	1140	\$54,196.00

255 Net Peak hp
For use only in areas where EPA Final Tier 4 is required.
Requires engine exhaust code 1830 or 1840.

Automatic Exhaust Filter Regeneration
Automatic Hydraulic Reversing Fan
Series Turbo Chargers
Cooled Exhaust Gas Recirculation
4 Valves / Cylinder
Wet Sleeve Cylinder Liners
ECO Mode
Auto-Idle and Programmable Auto-Shutdown
Automatic Starter Overload Protection
Electronically Controlled HPCR Fuel Delivery System, B20 Biodiesel
Compatible
Electric Fuel Priming System
10-Micron Primary Fuel Filter/Water Separator, 500 hour
2-Micron Final Fuel Filter, 500 hour
Inline Fuel Strainer
Spin-on Oil Filter, 500 hour
Oil crankcase filter, Lifetime
Auto-Tensioned Serpentine Belt
Under Hood Dual Element Air Cleaner with Restriction Indicator
Engine Intake Rotary Ejector Precleaner

▼ **EXHAUST**

Description	Code	Price
-------------	------	-------

Engine Exhaust W/ Flat Black Stack (FT4 or Stage V only) 1830 No Added Cost
Requires engine code 1140.

Engine Exhaust W/ Chrome Stack (FT4 or Stage V only) 1840 \$703.00
Requires engine code 1140.

▼ FUEL FILTRATION

Description	Code	Price
Standard Fuel & Water Filtration	1410	No Added Cost
Severe Duty Fuel & Water Filtration System	1420	\$528.00

For use where fuel quality is questionable and/or additional water separation is required. Filter base contains fuel heater.

▼ QUICK SERVICE GROUP

Description	Code	Price
Quick Service Group	1310	\$672.00
No Quick Service Group	1320	No Added Cost

▼ MACHINE CONFIGURATION

Description	Code	Price
Standard Antler Rack Hydraulic Controls	1010	No Added Cost
Armrest Fingertip Controls	1020	\$33,489.00

Grade Pro Armrest Controls Include:
* Fingertip controls with industry standard control pattern
* Automated Cross Slope control
* Integrated grade control (Contact TOPCON, Trimble, or Leica for full install requirements)
* Return-to-Straight
* Armrest steering control AND conventional steering wheel

Requires alternator code 1220 or 1240 and cab code 5060 or 5070.
Includes seat code 6140 and grade pro controls code 6650.

Dual Joystick Controls	1030	\$33,489.00
------------------------	------	-------------

Grade Pro Armrest Controls Include:
* Automated Cross Slope control
* Integrated grade control (Contact TOPCON, Trimble, or Leica for full install requirements)
* Return-to-Straight
* Armrest steering control AND conventional steering wheel

Requires alternator code 1220 or 1240 and cab code 5060 or 5070.
Includes seat code 6140 and grade pro controls code 6650.

▼ OPERATOR'S STATION

ROPS/FOPS Air Conditioned Cab

Description	Code	Price
-------------	------	-------

Low Cab w/ Fixed Lower Front and Side Windows	5020	No Added Cost
Low Cab w/ Fixed Lower Front and Side Opening Windows	5025	\$927.00
Low Cab w/ Lower Front and Side Opening Windows	5030	\$1,243.00
Includes Roof Wiring Harness for Lighting, Beacon, Precleaner and Heated Mirrors		
Low Cab w/ Fixed Lower Front and Side Opening Windows, Laminated Glass	5035	\$3,087.00
The advantage of laminated glass is that it resists shattering and strongly resists penetration by impacting objects.		
Grade Pro Low Cab w/ Lower Front and Side Opening Windows	5060	No Added Cost
Requires configuration code 1020 or code 1030 and seat code 6140. Requires (1) T244325 bracket to optionally move monitor to the RH door post.		
Grade Pro Low Cab w/ Fixed Lower Front and Side Opening Windows, Laminated Glass	5070	\$2,190.00
Requires configuration code 1020 or code 1030 and seat code 6140. Requires (1) T244325 bracket to optionally move monitor to the RH door post. The advantage of laminated glass is that it resists shattering and strongly resists penetration by impacting objects.		
Tall Cab with Lower Fixed Front and Side Opening Windows	50A1	\$2,555.00

▼ CAMERA

Description	Code	Price
Rear Camera (R4)	8830	No Added Cost
Rear view camera with a dedicated monitor		
Front & Rear Camera (R4)	8835	\$2,500.00

▼ MIRRORS

Description	Code	Price
Exterior Mounted Rearview Mirrors	8210	No Added Cost
Heated Exterior Mounted Rearview Mirrors	8220	\$570.00

▼ RADIO

Description	Code	Price
AM/FM Radio with Aux and Weather Band (WB)	8410	\$983.00
Premium AM/FM Radio with Bluetooth, Aux and Weather Band (WB).	8415	\$1,515.00
Requires engine code 1140.		

Requires engine code 1145

No Radio	8420	No Added Cost
----------	------	---------------

▼ WASHER AND WIPER

Description	Code	Price
Lower Front Intermittent Wiper & Washer	8310	\$670.00
Less Lower Front Window Wiper & Wiper	8320	No Added Cost

▼ CAB AIR PRECLEANER

Description	Code	Price
Powered Cab Air Precleaner	6010	\$925.00
Powered Cab Precleaner pre-filters outside air to significantly extend cab filter life.		
No Powered Cab Air Precleaner	6030	No Added Cost

▼ SEAT

Description	Code	Price
Standard Fabric Air Suspension Seat with Armrests and Headrest	6120	\$449.00
For use with cab codes 5020, 5025, 5030 & 5035		
Premium Heated, Leather/Fabric, High-Wide Back, Air Suspension Seat with Armrests	6130	\$1,191.00
For use with cab codes 5020, 5025, 5030 & 5035. This seat does not include a headrest. If a headrest is desired, please order AT361342 from service parts.		
Grade Pro Premium Heated, Leather/Fabric, High-Wide Back Air Suspension Seat	6140	No Added Cost
For use with cab codes 5060 & 5070. This seat does not include a headrest. If a headrest is desired, please order AT361342 from service parts.		

▼ SOUND ABSORPTION PACKAGE

Description	Code	Price
No Sound Absorption Package	8730	No Added Cost
Requires engine code 1140.		

▼ HYDRAULIC CONTROLS - RIGHT SIDE

Description	Code	Price
<u>Standard Hydraulic Controls</u>		
Industry standard manual hydraulic controls. Includes valves, control levers, and plumbing.		
Base Hydraulics - 4 Function Controls	6510	No Added Cost

Requires configuration code 1010.

Base Functions: Rear Steer, Circle Side shift, Wheel Lean & RH Blade Lift w/ Float.

Base Hydraulics w/ 1 Auxiliary Function Control	6520	\$1,663.00
---	------	------------

Requires configuration code 1010.

Base functions plus 1 function w/float control - front plumbing and hoses for Scarifier or auxiliary application.

For use with front scarifier.

Mid Mount Scarifier Base Hydraulics w/ 1 Auxiliary Function Control	6525	\$1,885.00
---	------	------------

Requires Mid Mount Scarifier code 6730 and configuration code 1010.

Midmount scarifier base hydraulics with 1 auxiliary function control with float control for mid mount scarifier.

For use with mid mount scarifier.

Base Hydraulics w/ 2 Auxiliary Function Controls	6530	\$3,138.00
--	------	------------

Requires configuration code 1010.

Base functions plus 2 functions w/float control - front plumbing and hoses for Scarifier and/or auxiliary application.

For use with front scarifier.

Base Hydraulics w/ 3 Auxiliary Function Controls	6540	\$4,611.00
--	------	------------

Requires code 1010.

Base Functions plus 3 functions-(2) with and (1) w/o float control, front plumbing and hoses for Scarifier and/or auxiliary application.

For use with front scarifier.

Grade Pro Controls

1020 - Finger-tip armrest mounted controls, consistent with the industry standard pattern. Includes armrest mounted lever steering plus the traditional steering wheel. All Auxiliary codes include front and rear plumbing for each function except code 6595. 1030 - Dual Joystick armrest mounted controls. Includes armrest mounted lever steering plus the traditional steering wheel. All Auxiliary codes include front and rear plumbing for each function except code 6595.

Grade Pro Base Controls	6550	No Added Cost
-------------------------	------	---------------

Requires code 1020 OR 1030

Includes the following Base Hydraulic Functions:

Rear Steer

Circle Side shift

Wheel Lean

Right and Left hand Blade Lift w/ Float

Circle Rotate

Blade Side Shift

Blade Tilt

Speed-sensitive Lever Steer (also includes traditional steering wheel)

Grade Pro Controls for Mid Mount Scarifier w/1 Auxiliary Function Control	6526	\$1,885.00
---	------	------------

Requires codes 1020 OR 1030 AND Mid Mount Scarifier code 6730.

Includes base functions plus mid-mount scarifier/auxiliary hoses that run to front of machine

Fingertip controls include right hand lever control

Grade Pro Controls for Rear Ripper or 1 Rear Auxiliary Function	6555	\$1,665.00
---	------	------------

Requires code 1020 OR 1030

Includes Base functions plus 1 rear auxiliary function w/float control - Rear plumbing and hoses for Ripper or auxiliary application.
Fingertip controls include left hand lever control

Grade Pro Controls for Front Scarifier or 1 Front Auxiliary Function	6560	\$1,665.00
--	------	------------

Requires code 1020 OR 1030

Include Base functions plus 1 front auxiliary function w/float control - front plumbing and hoses for Scarifier and/or auxiliary application.
Fingertip controls include right hand lever control

Grade Pro Controls w/1 Rear Auxiliary Function Control	6570	\$1,665.00
--	------	------------

Requires code 1020 OR 1030

Includes Base functions plus 1 rear auxiliary function w/float control - Rear plumbing and hoses for auxiliary application.
Fingertip controls include right hand lever control

Grade Pro Controls w/1 Front Auxiliary Function AND 2 Rear Auxiliary Functions	6580	\$4,988.00
--	------	------------

Requires code 1020 OR 1030

Includes Base functions plus 3 auxiliary - 1 front and 2 rear auxiliary functions w/ float control and rear plumbing for Scarifier / Ripper and/or front, mid or rear auxiliary applications.
Fingertip controls include left AND right hand lever control
4 independent proportional rollers are reconfigurable for auxiliary functions.

Grade Pro Controls w/1 Front Auxiliary Function AND 1 Rear Auxiliary Function	6585	\$3,364.00
---	------	------------

Requires code 1020 OR 1030

Includes Base functions plus 2 auxiliary - 1 front and 1 rear auxiliary functions w/ float control and plumbing for Scarifier / Ripper applications.
Fingertip controls include left AND right hand lever control
4 independent proportional rollers are reconfigurable for auxiliary functions.

Grade Pro Controls w/1 Front Auxiliary Function AND 3 Rear Auxiliary Functions	6590	\$6,652.00
--	------	------------

Requires code 1020 OR 1030

Includes Base functions plus 4 auxiliary - 1 front and 3 rear auxiliary functions w/ float control and rear plumbing for Scarifier / Ripper and/or front, mid or rear auxiliary applications.
Fingertip controls include left AND right hand lever control
4 independent proportional rollers are reconfigurable for auxiliary functions.

Grade Pro Controls w/3 Front Auxiliary Function AND 3 Rear Auxiliary Functions	6595	\$9,977.00
--	------	------------

Requires code 1020 OR 1030

Includes Base functions plus 6 auxiliary - 3 front and 3 rear with float control on 4 functions, and front and rear plumbing for 2 functions each.
Fingertip controls include left AND right hand lever control
4 independent proportional rollers are reconfigurable for auxiliary functions.

▼ HYDRAULIC CONTROLS - LEFT SIDE

Industry standard manual hydraulic controls. Includes valves, control levers, and plumbing.

Description

Code

Price

Standard Hydraulic Controls

Industry standard manual hydraulic controls. Includes valves, control levers, and plumbing.

Base Hydraulics- 4 Function Controls

6610 No Added Cost

Requires code 1010.

Base Functions: LH Blade Lift w/ Float, Blade Side shift, Circle Rotate, Blade Tilt.

Base Hydraulics w/ 1 Auxiliary Function Control

6620 \$1,463.00

Requires code 1010.

Base Functions plus 1 function w/float control and lines for Ripper or auxiliary application.

For Use with Rear Ripper/Scarifier Combination.

Base Hydraulics w/2 Auxiliary Function Control

6630 \$2,952.00

Requires code 1010.

Base functions plus 2 functions w/float control and lines for Ripper and/or auxiliary application.

For Use with Rear Ripper/Scarifier Combination.

Base Hydraulics w/ 3 Auxiliary Function Control

6640 \$4,425.00

Requires code 1010.

Base Functions plus 3 functions-(2) with and (1) w/o Float Control, and lines for Ripper and/or auxiliary application.

For Use with Rear Ripper/Scarifier Combination.

Grade Pro Controls

Grade Pro Controls - Left Side

6650 No Added Cost

Requires code 1020 or code 1030.

Accompanies GRADE PRO CONTROLS - RIGHT SIDE order code selection.

SHIPPING PREPARATION

Description

Code

Price

Air Conditioner Refrigerant Charged

8510 No Added Cost

HYDRAULIC OIL

Description

Code

Price

Hydrau

5815 No Added Cost

Broad ambient operating temperatures.

Operating range:

-25°C to 50°C

-13°F to 122°F

Hydrau XR

5830 \$731.00

Optional factory fill.

Broad ambient operating temperatures.

Operating range:
-40°C to 40°C
-40°F to 104°F
Intended for colder climates, provides all-season capability.
Required for Russia.

▼ HYDRAULIC PUMP DISCONNECT

Description	Code	Price
Hydraulic Pump Disconnect	1610	\$188.00
Required with engine code 1140. Required for Russia.		

▼ MACHINE CONNECTIVITY

Machine connectivity functions require cellular coverage. Usage of JDLINK System requires customer's acceptance of the terms of the John Deere Telematics System Contract.

Option availability limited by specific geographical regions. Please refer to region specific price pages for appropriate ordering codes.

Description	Code	Price
JDLINK Ultimate - 5 Year Subscription	170C	No Added Cost

Includes JDLINK hardware: integrated cab wiring harness, antenna, modular telematics gateway (MTG), and now includes all Ultimate Connectivity features Wireless Data Transfer (WDT) enabling automatic data transfer from TimberMatic and Waratah H16 Measuring Systems to TimberManager and MyJohnDeere, supporting TimberOffice 5 Software. Additionally, Ultimate now includes Limited Internet features supporting optional ForestSight Solutions such as advance mapping systems and Remote Display Access (RDA) features supported by TeamViewer applications. JDLINK utilizes cellular and satellite technology infrastructure that is outside the control of John Deere. Changes to that infrastructure may require customers to purchase compatible JDLINK hardware to restore functionality. Includes 5 year subscription. Annual subscription renewal required after 5 years for continued functionality. JDLINK customer account must be created to access JDLINK Ultimate data. Go to www.StellarSupport.com to renew or update JDLINK subscriptions. Use of this service, and all rights and obligations of John Deere and the Customer (as identified in the applicable agreement), are governed by the terms and conditions outlined in the applicable Services and Software agreements available at www.JohnDeere.com/Agreements. If these terms and conditions are not agreeable do not proceed and do not use the service.

JDLINK Ultimate Dual - 5 Year Subscription	170J	\$1,936.00
--	------	------------

Includes JDLINK hardware: integrated cab wiring harness, antenna, modular telematics gateway (MTG), and now includes all cellular dependent Ultimate Connectivity features - Wireless Data Transfer (WDT) enabling automatic data transfer from TimberMatic and Waratah H16 Measuring Systems to TimberManager and MyJohnDeere, supporting TimberOffice 5 Software. Additionally, Ultimate Dual now includes Limited Internet features supporting optional ForestSight Solutions such as advance mapping systems and Remote Display Access (RDA) features supported by TeamViewer applications when cellular signal is available. JD Link Ultimate Dual works with the 4G LTE MTG to automatically transmit compressed summary data over a satellite network when a cellular network is not available. JDLINK utilizes cellular and satellite technology infrastructure that is outside the control of John Deere. Changes to that infrastructure may require customers to purchase compatible JDLINK hardware to restore functionality. Includes 5 year

subscription. Annual subscription renewal required after 5 years for continued functionality. JDLink customer account must be created to access JDLink Ultimate data. Go to www.StellarSupport.com to renew or update JDLink subscriptions.

Use of this service, and all rights and obligations of John Deere and the Customer (as identified in the applicable agreement), are governed by the terms and conditions outlined in the applicable Services and Software agreements available at www.JohnDeere.com/Agreements. If these terms and conditions are not agreeable do not proceed and do not use the service.

▼ BLADE IMPACT ABSORPTION SYSTEM

Description	Code	Price
Blade Impact Absorption System	1910	\$3,617.00
Protects Moldboard and draft frame from impacts with Stationary objects		
No Blade Impact Absorption System	1920	No Added Cost

▼ MOLDBOARDS WITH DURA-MAX CUTTING EDGES AND END BITS

Description	Code	Price
12 Ft. x 24 In. x 7/8 In. (3.66M x 610mm x 22mm) w/ 6 In. x 5/8 In. (152 x 16mm) Cutting Edge & 5/8 in. (16mm) Hardware	2010	No Added Cost
12 Ft. x 24 In. x 7/8 In. (3.66M x 610mm x 22mm) w/ 8 In. x 3/4 In. (203 x 19mm) Cutting Edge & 5/8 in. (16mm) Hardware	2020	\$400.00
13 Ft. x 27 In. x 1 In. (3.96M x 686mm x 25mm) with 8 In. x 3/4 In. (203 x 19mm) Cutting Edge & 5/8 in. (16mm) Hardware	2040	\$1,215.00
14 Ft. x 24 In. x 7/8 In. (4.27M x 610mm x 22mm) w/ 6 In. x 5/8 In. (152 x 16mm) Cutting Edge & 5/8 in. (16mm) Hardware	2050	\$1,354.00
14 Ft. x 24 In. x 7/8 In. (4.27M x 610mm x 22mm) w/ 8 In. x 3/4 In. (203 x 19mm) Cutting Edge & 5/8 in. (16mm) Hardware	2060	\$1,568.00
14 Ft. x 27 In. x 1 In. (4.27M x 686mm x 25mm) w/ 8 In. x 3/4 In. (203 x 19mm) Cutting Edge & 5/8 in. (16mm) Hardware	2070	\$1,997.00
Requires engine code 1120 or 1140.		
14 Ft. x 27 In. x 1 In. (4.27M x 686mm x 25mm) w/ 8 In. x 3/4 In. (203 x 19mm) Cutting Edge & 3/4 in. (19mm) Hardware	2080	\$2,042.00
Requires engine code 1120 or 1140.		

▼ CIRCLE

Description	Code	Price
Single Input Gearbox without Slip Clutch	2810	No Added Cost
Single Input Gearbox with Slip Clutch	2820	\$2,751.00

Slip clutch protects circle, circle drive gearbox and draft frame from damage when end of moldboard comes in contact with stationary objects. Slip clutch is integral to the circle drive gearbox assembly and allows the circle frame to rotate, avoiding damage to the machine, when the end of the moldboard comes in contact with an immovable object.

Heavy Duty Dual Input Gearbox without Slip Clutch	2830	\$1,573.00
---	------	------------

Heavy duty dual input gearbox is an industry exclusive and provides significant improvements in circle drive component durability. The heavy duty dual input circle drive gearbox provides comparable circle torque and circle rotate speed as the single input circle drive gearbox. The heavy duty dual input circle drive gearbox will significantly enhance uptime for the customer and is recommended for applications that frequently use the circle rotate function while under heavy load.

Heavy Duty Dual Input Gearbox with Slip Clutch	2840	\$4,324.00
--	------	------------

Heavy duty dual input gearbox is an industry exclusive and provides significant improvements in circle drive component durability. The heavy duty dual input circle drive gearbox provides comparable circle torque and circle rotate speed as the single input circle drive gearbox. The heavy duty dual input circle drive gearbox will significantly enhance uptime for the customer and is recommended for applications that frequently use the circle rotate function while under heavy load.

Slip clutch protects circle, circle drive gearbox and draft frame from damage when end of moldboard comes in contact with stationary objects. Slip clutch is integral to the circle drive gearbox assembly and allows the circle frame to rotate, avoiding damage to the machine, when the end of the moldboard comes in contact with an immovable object.

Premium Circle	2850	\$19,000.00
----------------	------	-------------

Replaces the circle gearbox drive and circle with a fully sealed bearing. Customers will benefit from lower operating costs with no wear inserts to replace or maintain over the life of the machine. Maintenance takes just minutes by greasing the bearing every 500 hours. A 40% increase in circle torque and 15% increase in circle speed compared to the traditional gearbox will reduce cycle times and improve productivity. Grade control customers will appreciate the smoothness and tightness of the circle increasing accuracy without having to shim inserts. Combine with SmartGrade for the most innovative and effective Grade Control system in the industry. Slip Clutch is included at no additional cost.

▼ ALTERNATOR

Description	Code	Price
130 amp Alternator	1235	\$412.00
Requires engine code 1140.		
Dual 100 Amp Alternators (200 Amp total)	1240	\$954.00
Requires engine code 1140.		

▼ LIGHTING

For raised front lights order code 9270 Tall Front Light Bar. All lighting packages include LED turn signals on front frame, LED rear turn signals mounted on rear grille, front and rear LED marker lights, LED brake lights and LED hazard warning lights.

Description	Code	Price
Transporting Lights (6 Halogen Lights)	7110	No Added Cost

Includes 2-high and 2-low beam halogen headlights plus 2 - reversing lights on rear grill.

Grading Lights (10 Halogen Lights)	7130	\$763.00
------------------------------------	------	----------

Includes light code 7110 Transporting Lights plus (4) additional work lights (2 - bottom cab, 2 - mid-frame).

Deluxe Grading Lights (18 Halogen Lights)	7160	\$1,399.00
---	------	------------

Includes light code 7130 Grading Lights plus (8) additional work lights (4 - corner cab, 2 - front cab, and 2 - right-side cab roof).

Premium Grading Lights (18 LED Lights)	7180	\$4,134.00
--	------	------------

Same lighting locations as light code 7160 Deluxe Grading Lights, all Premium Grading Lights are LED.

▼ CONVERTER

Description	Code	Price
24-to-12 Volt Converter (15 amps peak / 10 amps continuous)	8110	No Added Cost

24-to-12 Volt Converter (30 amps peak / 25 amps continuous)	8120	\$470.00
---	------	----------

Recommend code 8120 for additional 12 volt needs, such as business band or CB radios

▼ FRONT ATTACHMENTS

Description	Code	Price
Front Push Block	6710	\$4,189.00

2,950 lbs.

Front Scarifier	6720	\$9,033.00
-----------------	------	------------

Includes Front Hydraulics, plumbing and hoses
Scarifier with 2 pitch positions and 9 shank pockets
Five 1 x 3 inch Scarifier Shanks w/teeth
If additional shanks are desired order (1) each of T6Y5230 Tooth, T114792 Shank and T104223 Retainer for each set.
Can not be used with 6550 Hydraulics.

Mid-Mount Scarifier with Integrated Front Push Plate	6730	\$16,103.00
--	------	-------------

Requires hydraulic code 6525 or 6526
Mid-Mount Scarifier with Push Block Can not be used with Front Scarifier.
Not for use with Front Fenders Code 7810.
Recommend Rear Counterweight for better machine balance.

Balderson Style Front Lift Group	6740	\$7,660.00
----------------------------------	------	------------

Requires hydraulic code 6520, 6530, 6540, 6560, 6580, 6585, 6590, or 6595.
(2) AT367896 Mating Hooks from Parts are available to convert old front attachments to the Bladerson-style lift group.

Less Front Attachment	6750	No Added Cost
-----------------------	------	---------------

Front-Mounted Dozer Blade, 97 in. x 37.6 in. (2464 mm x 955 mm)	6770	\$9,870.00
---	------	------------

Requires hydraulic controls on the right side with a minimum 1 front auxillary function.
Requires 14.0 24 or 14.0 R24 tires

Front-Mounted Dozer Blade, 105 in. x 37.6 in. (2667 mm x 955 mm)	6780	\$10,055.00
--	------	-------------

Requires hydraulic controls on the right side with a minimum 1 front auxillary function.
Requires 14.0 24, 14.0 R24, 17.5 25, or 17.5 R 25 tires.

▼ REAR ATTACHMENTS

Description	Code	Price
Rear Mounted Ripper/Scarifier Combination with Rear Hitch and Pin	6810	\$17,774.00

Includes Rear mounted Ripper/Scarifier with rear hitch and pin.
NeverGrease Pin Joints.
Three 2 x 5 in. Ripper Shanks w/teeth.
Does not include Scarifier Shanks w/teeth (offered in code 9430: (9) Extra Scarifier Shanks w/Teeth For Rear Ripper/Scarifier)
Can not be used with codes 6550, 6560 or 6610.
Recommend Front Push Block (or other front equipment) for proper weight distribution and performance.

Rear Counterweight with Rear Hitch and Pin	6820	\$2,650.00
--	------	------------

1600 lbs.(725.7 kg.) Rear Counterweight.
Recommend for use with Front / Mid Scarifier.

Rear Hitch and Pin	6830	\$511.00
--------------------	------	----------

Not for use with Rear Ripper/Scarifier.

No Rear Attachment	6850	No Added Cost
--------------------	------	---------------

▼ TRANSMISSION

Description	Code	Price
Autoshift Transmission	5510	\$1,874.00

Manual Shift Transmission (no Autoshift)	5520	No Added Cost
--	------	---------------

▼ TRANSMISSION SOLENOID GUARD

Description	Code	Price
Transmission Solenoid Valve Guard	5710	\$213.00

Required with engine code 1140.
Required for Russia.
Recommended for snow plowing applications

▼ WHEELS AND TIRES

Tire selection should be made with consideration for the machine weight and all planned attachments (OEM and aftermarket). Each tire has a maximum load rating that is not to be exceeded. Failure to abide by the load ratings of the tires without first consulting the local tire supplier could result in nullification of the tire warranty. Max load rating is shown next to each tire size and type below

Each selection includes a set of 6 tire/rim assemblies.

NOTE: If a No Brand Preference code is selected a 9000 code in the Attachment- Order as Desired section will automatically be selected as well. This is required to enable the factory to source this order.

All Tires are tubeless unless stated differently.

All wheels on 6WD models are 3 piece rims.

Bias Ply:

13.0-24 12 ply tire, maximum per tire load 6000 lbs.

14.0-24 12 ply tire, maximum per tire load 6800 lbs.

17.5-25 12 ply tire, maximum per tire load 6400 lbs.

13.0-24 16 ply tire, maximum per tire load 7160 lbs.

14.0-24 16 ply tire, maximum per tire load 8040 lbs.

17.5-25 16 ply tire, maximum per tire load 7380 lbs.

Radial:

14.0R24 radial tire, maximum per tire load 8050 lbs.

17.5R25 radial tire, maximum per tire load 8048 lbs.

20.5R25 radial tire, maximum per tire load 10,200 lbs.

550/65R25 radial tire maximum per tire load 10,055 lbs.

Radial Tires: Recommended for puncture resistance, fuel economy and increased traction.

Description	Code	Price
<u>Less Wheels and Tires</u>		
Less Tires & Wheels	4000	No Added Cost
Not available for Russia.		
<u>14.0-24 16 PR G2 Bias Tires With 3 Piece Rims</u>		
Firestone SGG	4316	\$18,253.00
<u>14.0R24 G2/L2 Single Star Radial Tires With 3 Piece Rims</u>		
No Brand Preference	4918	\$22,153.00
Bridgestone VKT	4415	\$23,993.00
Michelin XGLA2	4416	\$24,501.00
Bridgestone VUT	4417	\$23,275.00
<u>14.0R24 G2/L2 Single Star Radial Snow Tires With 3 Piece Rims</u>		
No Brand Preference	4916	\$27,494.00
Michelin SnoPlus	4426	\$29,278.00
Bridgestone Snow Wedge	4427	\$28,617.00
<u>17.5-25 16 PR G2/L2 Bias Tires With 3 Piece Rims</u>		
Firestone SGG	4516	\$22,276.00
<u>17.5R25 L2 Single Star Radial Tires With 3 Piece</u>		

Rims

No Brand Preference	4924	\$24,929.00
Bridgestone VKT	4615	\$27,610.00
Michelin XTLA	4616	\$28,627.00
Bridgestone VUT	4617	\$26,981.00

17.5R25 G3/L3 Single Star Radial Tires With 3 Piece Rims

Michelin XHA2	4626	\$32,190.00
---------------	------	-------------

17.5R25 G2/L2 Single Star Radial Tires With 3 Piece Rims

Michelin SnoPlus	4636	\$33,757.00
Bridgestone Snow Wedge	4637	\$31,829.00
No Brand Preference	4920	\$30,708.00

▼ **FENDERS**

Description	Code	Price
Front Fenders	7810	\$2,163.00
No Front Fenders	7820	No Added Cost

▼ **OPERATOR'S MANUAL AND DECALS**

Description	Code	Price
English Manual W/ English Labels & Decals	2605	No Added Cost
Spanish Manual W/ Spanish Labels & Decals	2610	No Added Cost
French Manual W/ French Labels & Decals	2615	No Added Cost

▼ **GRADE CONTROL FACTORY BASE KITS**

The following options are for GP graders only and require code 1020 or 1030. See field attachments for G (code 1010) grade control ready kits

Description	Code	Price
Topcon Grade Control Base Kit for GP Graders	2500	\$5,882.00
Base kit is factory installed and includes additional brackets & wiring harnesses that further enhance and simplify the addition of a Topcon Grade Control System. Requires code 1020 or 1030		
Trimble Grade Control Base Kit for GP Graders	2525	\$5,882.00
Base kit is factory installed and includes additional brackets and wiring harnesses that further enhance and simplify the addition of a Trimble GCS900 Grade Control System. Not Compatible with Earthworks		

Requires code 1020 or 1030

No Grade Control Base Kit Installed

2575 No Added Cost

▼ **GRADE CONTROL SYSTEM**

Description	Code	Price
SMARTGRADE 3D GNSS MASTLESS GRADE CONTROL	2740	\$98,600.00

Requires code 1020 or 1030.

Not compatible with grade control factory base kits. Example: Topcon Ready (2500)

Mastless 3D GNSS grade control system fully integrated into the cab and structures. Consists of Topcon UR-1 radio that is capable of doing both UHF and 915 MHz, sensors, in-cab display and Topcon software compatible with Topcon file formats. Includes Automation Suite (Auto-Articulation, Blade Flip and Machine Preset).

No Topcon 3D GPS Grade Control System installed

2775 No Added Cost

Optional - Select as desired

▼ **COLD START PACKAGES**

Description	Code	Price
Engine Block Heater	9360	\$348.00

Recommended for use on machines that will be operating above 8,000 feet (2440 meters) in altitude, and/or colder than 0 degrees F (-18 degrees C).

Includes all weather receptacle conveniently located at ground level

Requires: Code 1610 Hydraulic Pump Disconnect

Ether Starting Aid

9370

\$477.00

Requires 9.0L engine, codes 1112, 1120 or 1140

Cannot be used with code 9340, Engine Air Intake Manifold Pre-Heater

Ether is not included.

Cold Weather Control Valve Covers

9620

\$207.00

Plastic covers that mount below the cab, shielding the control valve from snow and slowing down hydraulic heat loss in winter.

Requires code 1010 standard hydraulics.

▼ **AIR CLEANER**

Description	Code	Price
Heavy Duty Air Cleaner - 9.0L 14 in	9380	\$1,009.00

Engine code 1140 only
15% larger capacity

Adjusting Rotary Ejector Precleaner

9395

\$556.00

Ability to raise engine pre-cleaner to improve air filter performance.

Requires code 9380

STANDARD WARRANTY FOR NEW JOHN DEERE CONSTRUCTION, UTILITY, CCE AND FORESTRY PRODUCTS – US & Canada

- **Construction, Forestry & Compact Construction Equipment (CCE) Products***: 12 months Full Machine Standard Warranty
- *** Compact Construction Equipment Products** Delivered and settled on or after 01 June 2018: 24 months or 2000 hours (whichever comes first) Full Machine Standard Warranty
- **C&E Series Pull-Type Scrapers**: 6 months Full Machine Standard Warranty
- **DC & DE Series Pull-Type Scrapers**: 12 months Full Machine Standard Warranty
- **Scraper Tractors**: 24 Months or 2000 Hours (whichever occurs first) Full Machine Standard Warranty
- **Forestry Attachments**: 12 Months or 2000 Hours (whichever occurs first) Full Machine Standard Warranty
- **Frontier Equipment**: 6 months Full Machine Standard Warranty (90 days in rental applications)

The "Standard Warranty" is part of the warranty protection package available from John Deere Construction & Forestry Company (John Deere Limited in Canada) ("John Deere") to purchasers of new John Deere products ("product"):

STANDARD Warranty is John Deere's standard new product warranty, described in this document, provided at no additional charge to the purchaser.

EXTENDED Warranty is a separate repair contract made available by John Deere for purchasers who wish to complement their Standard Warranty coverage. Complete Extended Warranty details, including coverage options and limitations, are set forth in the Application for Extended Warranty, which is available from authorized John Deere dealers.

STRUCTURALL Warranty applies to certain structural components as listed below and as described in this document.

FACTORY-INSTALLED UNDERCARRIAGE Warranty applies to certain undercarriage components as listed below and as described in this document.

A. STANDARD WARRANTY - GENERAL PROVISIONS

John Deere will repair or replace, at its option, any parts (except those specified below) of a new John Deere product that, as delivered to the original retail purchaser(s), are defective in material or workmanship. Performance of this warranty will be free of charge for parts and labor/labour, except as otherwise stated below. Standard Warranty applies only to purchases from John Deere and authorized John Deere dealers and, except as otherwise provided in the next sentence and section L below, is extended only to the original retail purchaser of the product. Remaining Standard Warranty applicable to a used John Deere product is transferred to a subsequent purchaser of the product only if the subsequent purchaser requests a transfer from an authorized John Deere dealer before the product's Standard Warranty expires. Coverage begins on the date of delivery of the product to the original retail purchaser. For purposes of this warranty, a product that has been rented, used for demonstration purposes for 150 or more hours, or otherwise used prior to its original retail purchase has been "used" for the total duration of such use. Warranty statements required by law covering engine emissions-related parts and components are found on a separate written warranty certificate provided to the purchaser at the time of the original retail purchase.

B. WHAT IS COVERED BY STANDARD WARRANTY -

All parts of a new John Deere product (except those noted in Sections D and E below) are covered during the Standard Warranty period set out above.

C. EXCLUSIVE REMEDY -

The repair or replacement of covered parts or components that are defective, as provided in Sections A, B, D.2 and D.3 herein, shall be the purchaser's exclusive remedy for any defect in the product. However, if after repeated attempts such repair or replacement fails to correct the performance problem caused by the defect, the purchaser's sole remedy shall be a refund of the amount paid for the product (in exchange for a return of the product), excluding any transportation charges, license fees, taxes and insurance premiums, and less a reasonable allowance for use of the product prior to its return. In no event will the dealer, John Deere or any company affiliated with John Deere be liable for any incidental or consequential damages, including but not limited to loss of profits, rental of substitute equipment or other commercial loss. Correction of defects in the manner provided above shall constitute fulfillment of all liabilities of the Dealer, John Deere, or any company affiliated with John Deere to the purchaser or any other

person, whether based upon contract, tort, strict liability, or otherwise. This limitation does not apply to claims for personal injury.

D. ITEMS COVERED SEPARATELY -

1. Standard Warranty does not apply to batteries, radios, tires, cameras, or to Cummins, MTU or Detroit Diesel Engines installed in John Deere products, which are covered by separate written warranties.
2. Factory-Installed Undercarriage Warranty covers all non-rubberized factory-installed undercarriage wear components for 3 years or 4,000 hours from the date of delivery to the original retail purchaser, whichever occurs first (unless terminated earlier under Section F, below). For purposes of this warranty, a product that has been rented, used for demonstration purposes for 150 or more hours, or otherwise used prior to its original retail purchase has been "used" for the total duration of such use. In addition to the items listed in section E below, Factory-Installed Undercarriage Warranty does not cover: failures due to wear, machine application, maintenance practices, or improper machine configuration; removal and installation labor/labour; transportation or hauling costs; unapproved parts; non-wear items; and rubberized undercarriage components such as rubber tracks. Warranty claims will be pro-rated based upon wear of the failed component and whether track shoe width is approved by John Deere. Factory-Installed Undercarriage Warranty does not apply to Scraper Tractors.
3. StructurALL Warranty for new John Deere Products (except Compact Excavators & Loaders, Skid-Steer Loaders, Compact Track Loaders, Scraper Tractors, Pull-Type Scrapers, and Forestry Attachments, which are not eligible for StructurALL Warranty) begins at the date of delivery to the original retail purchaser and ends (unless terminated earlier under Section F, below) after three (3) years, or 10,000 hours (whichever occurs first). For purposes of this warranty, a product that has been rented, used for demonstration purposes for 150 or more hours, or otherwise used prior to its original retail purchase has been "used" for the total duration of such use. **StructurALL Warranty applies only to the following structural components listed below as installed on the product at the time of original manufacture.** If a particular component is not listed below it is not covered by StructurALL Warranty.

Arm; Articulation Joint (incl. pins & bushings); Bin Frame; Boom; Carbody; C-Frame*; Circle Frame; Coupler (John Deere built ONLY); Dipperstick; Draft Frame; Engine Frame; Equipment Frame; Grapple Arch and Grapple Boom; Loader Arm; Loader Frame; Mainframe; Moldboard Lift Arm; NeverGrease™ Pin Joints [Includes steering pin and bushing joints (standard equipment), roller elements (roller bearings) in bucket to boom joints and sliding elements (bushing) for boom and linkage joints (optional equipment)]; Rollover Protection Structure (ROPS); Side Frame; Swing Frame; Track Frame; Undercarriage Frame; X-Frame; Z-bar loader linkage (including bell crank and bucket driver link); Specialty booms and arms marketed as "heavy duty" by John Deere.

Items Covered by StructurALL for Cut-to-Length Forestry Machines: Front frame (welded assembly); Rear frame (welded assembly); Crane king post with basement; Middle joint frame; Cabin swing frame; Main Boom

StructurALL Warranty does not apply to:

1. Any product used primarily in extreme duty or severe duty applications such as but not limited to: demolition and wrecking, chemical plant (including fertilizer plants), salt mines, steel mill, land fill and transfer stations, scrap handling, scarifying and other applications that are similarly destructive or similarly heavy duty except specialty booms and arms as stated in Section D.3 above.
2. C-Frames on H-Series & J-Series Crawlers equipped with root rakes or used in forestry applications unless equipped with an "extreme duty" reinforcement package.
3. Cut-to-Length Forestry Heads and Slash Bundler Units.
4. Crawlers equipped with optional side booms.
5. Cut-to-Length Forestry, Excavator, and Log Loader swing bearings.
6. Motor Graders equipped with front- or rear-mounted snow wings.

E. ITEMS NOT COVERED -

John Deere is NOT responsible for the following:

1. Freight
2. Adjustments to compensate for wear, for periodic maintenance or adjustments that result from normal wear and tear.
3. Damage caused by unapproved adjustments (electronic or mechanical) to machine or machine components outside of published specifications including but not limited to engine, hydraulic components and relief valves.
4. Program updates, calibrations, and pressure adjustments.
5. Diagnostic Time
6. Additional Labor/Labour Time - Above SPG/Labor/Labour Rate
7. Additional Cleaning - Above SPG/Labor/Labour Rate
8. Rental Fees
9. Depreciation or damage caused by normal wear or application, lack of reasonable and proper maintenance, failure to follow operating instructions, misuse, negligence, collision or other accidents.
10. Premiums charged for Overtime Labor/Labour
11. Transportation to and from the dealership.
12. Travel time, mileage or service calls by the dealer.
13. Non-John Deere components or modifications, Rotobec grapples, and attachments installed aftermarket.
14. Shop supplies and maintenance items such as, but not limited to: filters, fuels, oil, hydraulic fluid, lubricants, coolants, conditioners, shop towels, cleaners and degreasers. Note: Reimbursement for refills of oils/coolants lost due to a warrantable failure is covered when a system failure occurs outside the boundaries of a normal oil change (within 25% of specified change interval as provided in the Operator's Manual).
15. Torn, cut, or worn hoses.
16. Wear items, such as, but not limited to: body liner, belts, blades, bulbs, lubricated joints (including pins and bushings), dry brakes, brake linings, dry clutch linings, saw blades, chains, skidder grapple shocks, color marking nozzles, and articulation bumpers.
17. Items such as cutting-edge parts, delimbing knives, bucket teeth and rubber track are not warranted for depreciation or damage caused by normal wear, lack of proper maintenance, misuse, failure to follow operating instructions, the elements or accident.
18. Any defect in a non-covered component, or damage to or failure of a covered component caused by a defect in a non-covered component.
19. Secondary damage which occurs from continued operation of a product after recognition of the occurrence of a failure.
20. Parts supplied or modifications done by third party suppliers.
21. Topping off fluids when fluid levels fall in the range between low and full
22. Parts/Kits not ordered on machine and installed aftermarket. These parts will be covered by any applicable parts warranty.
23. Attachments installed aftermarket – i.e. Winch not installed at factory.
24. Custom options installed outside the factory – i.e. G.R. Manufacturing option packages.
25. Used Products (except as otherwise provided in section L below).

F. TERMINATION OF WARRANTY-

John Deere is relieved of its obligations under Standard Warranty, StructurALL Warranty, Factory-Installed Undercarriage Warranty and/or Extended Warranty if:

1. Service (other than normal maintenance and replacement of service items) is performed by someone other than an authorized John Deere dealer; or
2. The product is modified or altered in ways not approved by John Deere; or
3. Any unapproved or improperly sized attachment is installed on the product. Approval and attachment size shall be at John Deere's sole discretion. (Consult dealer prior to installing attachments or product modification).
4. The product is moved outside the US and/or Canada.

G. PARTS REPLACED UNDER WARRANTY -

Only new or remanufactured parts or components furnished or approved by John Deere, will be used if John Deere elects to repair the product. If any such part or component is defective in material or workmanship when installed in the product, John Deere will repair or replace, as it elects, such defective part or component, provided the defect is

reported to an authorized John Deere dealer within 90 days of installation or before expiration of the applicable Standard Warranty, Factory-Installed Undercarriage Warranty and/or StructurALL Warranty whichever is later.

H. TELEMATICS

NOTICE: Products may be equipped with telematics hardware and software ("Telematics") that transmit data to John Deere/ Dealer. Purchaser may deactivate Telematics at www.idlink.com.

Notwithstanding Purchaser's right, title or interest in the Products, Purchaser agrees that John Deere and Dealer (their affiliates, successors and assigns), without further notice to Purchaser have the right to:

1. Access, use, collect and disclose any data generated by, collected by, or stored in, Products or any hardware or devices interfacing with Products ("Machine Data");
2. Access Machine Data directly through data reporting devices integrated within, or attached to, Products, including Telematics ("Data Reporting Systems"); and
3. Update the Data Reporting Systems software from time to time. Machine Data will only be used in accordance with John Deere's Machine Data Policy, located at www.JohnDeere.com/MachineDataPolicy.

I. OBTAINING WARRANTY SERVICE -

To obtain warranty service, the purchaser must request warranty service from a John Deere dealer authorized to sell the product to be serviced. When making such a request, the purchaser must present evidence of the product's delivery date, make the product available at the dealer's place of business, and inform the dealer in what way the purchaser believes the product to be defective. Standard Warranty, Factory-Installed Undercarriage Warranty and/or StructurALL Warranty repairs may be made in the field if the purchaser and servicing dealer so desire. However, John Deere will not be responsible for any charges (such as dealer travel time, mileage or extra labor/labour) that would not have been incurred had the product been repaired at the dealer's place of business.

J. NO IMPLIED WARRANTY, CONDITIONS OR OTHER REPRESENTATION -

Where permitted by law, neither John Deere nor any company affiliated with it makes any warranties, representations, conditions or promises, express or implied, as to the quality, performance, or freedom from defect of its products, other than those set forth in this document and **NO IMPLIED WARRANTY OF MERCHANTABILITY, CONDITIONS OR FITNESS IS MADE.**

K. NO DEALER WARRANTY -

The selling dealer makes no warranty of its own on any item covered by this warranty, and makes no warranty on other items unless the dealer delivers to the purchaser a separate written warranty certificate specifically warranting the item. **The dealer has no authority to make any representation or promise on behalf of John Deere, or to modify the terms or limitations of this warranty in any way.**

L. USED JOHN DEERE PRODUCTS ONLY -

John Deere will transfer remaining Standard Warranty, Factory-Installed Undercarriage Warranty and/or StructurALL Warranty to the purchaser of a used John Deere construction and/or forestry product that has been used for less than the full warranty period provided at the product's original retail purchase. This transfer is not effective until change of ownership is registered by a John Deere dealer. **ALL THE TERMS, INCLUDING LIMITATIONS AND EXCLUSIONS, OF THE JOHN DEERE STANDARD WARRANTY, FACTORY-INSTALLED UNDERCARRIAGE WARRANTY, AND/OR STRUCTURALL WARRANTY ORIGINALLY PROVIDED FOR THE PRODUCT REMAIN IN EFFECT AND APPLICABLE.**



Company ID Number: 513478

THE E-VERIFY PROGRAM FOR EMPLOYMENT VERIFICATION MEMORANDUM OF UNDERSTANDING

ARTICLE I

PURPOSE AND AUTHORITY

This Memorandum of Understanding (MOU) sets forth the points of agreement between the Department of Homeland Security (DHS) and Warrior Tractor & Equipment Co., Inc. (Employer) regarding the Employer's participation in the Employment Eligibility Verification Program (E-Verify). This MOU explains certain features of the E-Verify program and enumerates specific responsibilities of DHS, the Social Security Administration (SSA), and the Employer. E-Verify is a program that electronically confirms an employee's eligibility to work in the United States after completion of the Employment Eligibility Verification Form (Form I-9). For covered government contractors, E-Verify is used to verify the employment eligibility of all newly hired employees and all existing employees assigned to Federal contracts or to verify the entire workforce if the contractor so chooses.

Authority for the E-Verify program is found in Title IV, Subtitle A, of the Illegal Immigration Reform and Immigrant Responsibility Act of 1996 (IIRIRA), Pub. L. 104-208, 110 Stat. 3009, as amended (8 U.S.C. § 1324a note). Authority for use of the E-Verify program by Federal contractors and subcontractors covered by the terms of Subpart 22.18, "Employment Eligibility Verification", of the Federal Acquisition Regulation (FAR) (hereinafter referred to in this MOU as a "Federal contractor with the FAR E-Verify clause") to verify the employment eligibility of certain employees working on Federal contracts is also found in Subpart 22.18 and in Executive Order 12989, as amended.

ARTICLE II

FUNCTIONS TO BE PERFORMED

A. RESPONSIBILITIES OF SSA

1. SSA agrees to provide the Employer with available information that allows the Employer to confirm the accuracy of Social Security Numbers provided by all employees verified under this MOU and the employment authorization of U.S. citizens.
2. SSA agrees to provide to the Employer appropriate assistance with operational problems that may arise during the Employer's participation in the E-Verify program. SSA agrees to provide the Employer with names, titles, addresses, and telephone numbers of SSA representatives to be contacted during the E-Verify process.
3. SSA agrees to safeguard the information provided by the Employer through the E-Verify program procedures, and to limit access to such information, as is appropriate by law, to individuals responsible for the verification of Social Security Numbers and for evaluation of the E-Verify program or such other persons or entities who may be authorized by SSA as governed

Company ID Number: 513478

by the Privacy Act (5 U.S.C. § 552a), the Social Security Act (42 U.S.C. 1306(a)), and SSA regulations (20 CFR Part 401).

4. SSA agrees to provide a means of automated verification that is designed (in conjunction with DHS's automated system if necessary) to provide confirmation or tentative nonconfirmation of U.S. citizens' employment eligibility within 3 Federal Government work days of the initial inquiry.

5. SSA agrees to provide a means of secondary verification (including updating SSA records as may be necessary) for employees who contest SSA tentative nonconfirmations that is designed to provide final confirmation or nonconfirmation of U.S. citizens' employment eligibility and accuracy of SSA records for both citizens and non-citizens within 10 Federal Government work days of the date of referral to SSA, unless SSA determines that more than 10 days may be necessary. In such cases, SSA will provide additional verification instructions.

B. RESPONSIBILITIES OF DHS

1. After SSA verifies the accuracy of SSA records for employees through E-Verify, DHS agrees to provide the Employer access to selected data from DHS's database to enable the Employer to conduct, to the extent authorized by this MOU:

- Automated verification checks on employees by electronic means, and
- Photo verification checks (when available) on employees.

2. DHS agrees to provide to the Employer appropriate assistance with operational problems that may arise during the Employer's participation in the E-Verify program. DHS agrees to provide the Employer names, titles, addresses, and telephone numbers of DHS representatives to be contacted during the E-Verify process.

3. DHS agrees to make available to the Employer at the E-Verify Web site and on the E-Verify Web browser, instructional materials on E-Verify policies, procedures and requirements for both SSA and DHS, including restrictions on the use of E-Verify. DHS agrees to provide training materials on E-Verify.

4. DHS agrees to provide to the Employer a notice, which indicates the Employer's participation in the E-Verify program. DHS also agrees to provide to the Employer anti-discrimination notices issued by the Office of Special Counsel for Immigration-Related Unfair Employment Practices (OSC), Civil Rights Division, U.S. Department of Justice.

5. DHS agrees to issue the Employer a user identification number and password that permits the Employer to verify information provided by employees with DHS's database.

6. DHS agrees to safeguard the information provided to DHS by the Employer, and to limit access to such information to individuals responsible for the verification of employees' employment eligibility and for evaluation of the E-Verify program, or to such other persons or entities as may be authorized by applicable law. Information will be used only to verify the accuracy of Social Security Numbers and employment eligibility, to enforce the Immigration and

Company ID Number: 513478

Nationality Act (INA) and Federal criminal laws, and to administer Federal contracting requirements.

7. DHS agrees to provide a means of automated verification that is designed (in conjunction with SSA verification procedures) to provide confirmation or tentative nonconfirmation of employees' employment eligibility within 3 Federal Government work days of the initial inquiry.

8. DHS agrees to provide a means of secondary verification (including updating DHS records as may be necessary) for employees who contest DHS tentative nonconfirmations and photo non-match tentative nonconfirmations that is designed to provide final confirmation or nonconfirmation of the employees' employment eligibility within 10 Federal Government work days of the date of referral to DHS, unless DHS determines that more than 10 days may be necessary. In such cases, DHS will provide additional verification instructions.

C. RESPONSIBILITIES OF THE EMPLOYER

1. The Employer agrees to display the notices supplied by DHS in a prominent place that is clearly visible to prospective employees and all employees who are to be verified through the system.

2. The Employer agrees to provide to the SSA and DHS the names, titles, addresses, and telephone numbers of the Employer representatives to be contacted regarding E-Verify.

3. The Employer agrees to become familiar with and comply with the most recent version of the E-Verify User Manual.

4. The Employer agrees that any Employer Representative who will perform employment verification queries will complete the E-Verify Tutorial before that individual initiates any queries.

A. The Employer agrees that all Employer representatives will take the refresher tutorials initiated by the E-Verify program as a condition of continued use of E-Verify.

B. Failure to complete a refresher tutorial will prevent the Employer from continued use of the program.

5. The Employer agrees to comply with current Form I-9 procedures, with two exceptions:

- If an employee presents a "List B" identity document, the Employer agrees to only accept "List B" documents that contain a photo. (List B documents identified in 8 C.F.R. § 274a.2(b)(1)(B)) can be presented during the Form I-9 process to establish identity.) If an employee objects to the photo requirement for religious reasons, the Employer should contact E-Verify at 888-464-4218.

- If an employee presents a DHS Form I-551 (Permanent Resident Card) or Form I-766 (Employment Authorization Document) to complete the Form I-9, the Employer agrees to make a photocopy of the document and to retain the photocopy with the employee's Form I-9. The photocopy must be of sufficient quality to allow for verification of the photo

Company ID Number: 513478

and written information. The employer will use the photocopy to verify the photo and to assist DHS with its review of photo non-matches that are contested by employees. Note that employees retain the right to present any List A, or List B and List C, documentation to complete the Form I-9. DHS may in the future designate other documents that activate the photo screening tool.

6. The Employer understands that participation in E-Verify does not exempt the Employer from the responsibility to complete, retain, and make available for inspection Forms I-9 that relate to its employees, or from other requirements of applicable regulations or laws, including the obligation to comply with the antidiscrimination requirements of section 274B of the INA with respect to Form I-9 procedures, except for the following modified requirements applicable by reason of the Employer's participation in E-Verify: (1) identity documents must have photos, as described in paragraph 5 above; (2) a rebuttable presumption is established that the Employer has not violated section 274A(a)(1)(A) of the Immigration and Nationality Act (INA) with respect to the hiring of any individual if it obtains confirmation of the identity and employment eligibility of the individual in good faith compliance with the terms and conditions of E-Verify; (3) the Employer must notify DHS if it continues to employ any employee after receiving a final nonconfirmation, and is subject to a civil money penalty between \$550 and \$1,100 for each failure to notify DHS of continued employment following a final nonconfirmation; (4) the Employer is subject to a rebuttable presumption that it has knowingly employed an unauthorized alien in violation of section 274A(a)(1)(A) if the Employer continues to employ an employee after receiving a final nonconfirmation; and (5) no person or entity participating in E-Verify is civilly or criminally liable under any law for any action taken in good faith based on information provided through the confirmation system. DHS reserves the right to conduct Form I-9 and E-Verify system compliance inspections during the course of E-Verify, as well as to conduct any other enforcement activity authorized by law.

7. The Employer agrees to initiate E-Verify verification procedures for new employees within 3 Employer business days after each employee has been hired (but after the Form I-9 has been completed), and to complete as many (but only as many) steps of the E-Verify process as are necessary according to the E-Verify User Manual, or in the case of Federal contractors with the FAR E-Verify clause, the E-Verify User Manual for Federal Contractors. The Employer is prohibited from initiating verification procedures before the employee has been hired and the Form I-9 completed. If the automated system to be queried is temporarily unavailable, the 3-day time period is extended until it is again operational in order to accommodate the Employer's attempting, in good faith, to make inquiries during the period of unavailability. Employers may initiate verification by notating the Form I-9 in circumstances where the employee has applied for a Social Security Number (SSN) from the SSA and is waiting to receive the SSN, provided that the Employer performs an E-Verify employment verification query using the employee's SSN as soon as the SSN becomes available.

8. The Employer agrees not to use E-Verify procedures for pre-employment screening of job applicants, in support of any unlawful employment practice, or for any other use not authorized by this MOU. Employers must use E-Verify for all new employees, unless an Employer is a Federal contractor that qualifies for the exceptions described in Article II.D.1.c. Except as provided in Article II.D, the Employer will not verify selectively and will not verify employees hired before the effective date of this MOU. The Employer understands that if the Employer

Company ID Number: 513478

uses the E-Verify system for any purpose other than as authorized by this MOU, the Employer may be subject to appropriate legal action and termination of its access to SSA and DHS information pursuant to this MOU.

9. The Employer agrees to follow appropriate procedures (see Article III. below) regarding tentative nonconfirmations, including notifying employees in private of the finding and providing them written notice of the findings, providing written referral instructions to employees, allowing employees to contest the finding, and not taking adverse action against employees if they choose to contest the finding. Further, when employees contest a tentative nonconfirmation based upon a photo non-match, the Employer is required to take affirmative steps (see Article III.B. below) to contact DHS with information necessary to resolve the challenge.

10. The Employer agrees not to take any adverse action against an employee based upon the employee's perceived employment eligibility status while SSA or DHS is processing the verification request unless the Employer obtains knowledge (as defined in 8 C.F.R. § 274a.1(l)) that the employee is not work authorized. The Employer understands that an initial inability of the SSA or DHS automated verification system to verify work authorization, a tentative nonconfirmation, a case in continuance (indicating the need for additional time for the government to resolve a case), or the finding of a photo non-match, does not establish, and should not be interpreted as evidence, that the employee is not work authorized. In any of the cases listed above, the employee must be provided a full and fair opportunity to contest the finding, and if he or she does so, the employee may not be terminated or suffer any adverse employment consequences based upon the employee's perceived employment eligibility status (including denying, reducing, or extending work hours, delaying or preventing training, requiring an employee to work in poorer conditions, refusing to assign the employee to a Federal contract or other assignment, or otherwise subjecting an employee to any assumption that he or she is unauthorized to work) until and unless secondary verification by SSA or DHS has been completed and a final nonconfirmation has been issued. If the employee does not choose to contest a tentative nonconfirmation or a photo non-match or if a secondary verification is completed and a final nonconfirmation is issued, then the Employer can find the employee is not work authorized and terminate the employee's employment. Employers or employees with questions about a final nonconfirmation may call E-Verify at 1-888-464-4218 or OSC at 1-800-255-8155 or 1-800-237-2515 (TDD).

11. The Employer agrees to comply with Title VII of the Civil Rights Act of 1964 and section 274B of the INA, as applicable, by not discriminating unlawfully against any individual in hiring, firing, or recruitment or referral practices because of his or her national origin or, in the case of a protected individual as defined in section 274B(a)(3) of the INA, because of his or her citizenship status. The Employer understands that such illegal practices can include selective verification or use of E-Verify except as provided in part D below, or discharging or refusing to hire employees because they appear or sound "foreign" or have received tentative nonconfirmations. The Employer further understands that any violation of the unfair immigration-related employment practices provisions in section 274B of the INA could subject the Employer to civil penalties, back pay awards, and other sanctions, and violations of Title VII could subject the Employer to back pay awards, compensatory and punitive damages. Violations of either section 274B of the INA or Title VII may also lead to the termination of its participation in E-



Company ID Number: 513478

Verify. If the Employer has any questions relating to the anti-discrimination provision, it should contact OSC at 1-800-255-8155 or 1-800-237-2515 (TDD).

12. The Employer agrees to record the case verification number on the employee's Form I-9 or to print the screen containing the case verification number and attach it to the employee's Form I-9.

13. The Employer agrees that it will use the information it receives from SSA or DHS pursuant to E-Verify and this MOU only to confirm the employment eligibility of employees as authorized by this MOU. The Employer agrees that it will safeguard this information, and means of access to it (such as PINS and passwords) to ensure that it is not used for any other purpose and as necessary to protect its confidentiality, including ensuring that it is not disseminated to any person other than employees of the Employer who are authorized to perform the Employer's responsibilities under this MOU, except for such dissemination as may be authorized in advance by SSA or DHS for legitimate purposes.

14. The Employer acknowledges that the information which it receives from SSA is governed by the Privacy Act (5 U.S.C. § 552a(i)(1) and (3)) and the Social Security Act (42 U.S.C. 1306(a)), and that any person who obtains this information under false pretenses or uses it for any purpose other than as provided for in this MOU may be subject to criminal penalties.

15. The Employer agrees to cooperate with DHS and SSA in their compliance monitoring and evaluation of E-Verify, including by permitting DHS and SSA, upon reasonable notice, to review Forms I-9 and other employment records and to interview it and its employees regarding the Employer's use of E-Verify, and to respond in a timely and accurate manner to DHS requests for information relating to their participation in E-Verify.

D. RESPONSIBILITIES OF FEDERAL CONTRACTORS WITH THE FAR E-VERIFY CLAUSE

1. The Employer understands that if it is a subject to the employment verification terms in Subpart 22.18 of the FAR, it must verify the employment eligibility of any existing employee assigned to the contract and all new hires, as discussed in the Supplemental Guide for Federal Contractors. Once an employee has been verified through E-Verify by the Employer, the Employer may not reverify the employee through E-Verify.

a. Federal contractors with the FAR E-Verify clause agree to become familiar with and comply with the most recent versions of the E-Verify User Manual for Federal Contractors and the E-Verify Supplemental Guide for Federal Contractors.

b. Federal contractors with the FAR E-Verify clause agree to complete a tutorial for Federal contractors with the FAR E-Verify clause.

c. Federal contractors with the FAR E-Verify clause not enrolled at the time of contract award: An Employer that is not enrolled in E-Verify at the time of a contract award must enroll as a Federal contractor with the FAR E-Verify clause in E-Verify within 30 calendar days of contract award and, within 90 days of enrollment, begin to use E-Verify to initiate verification of employment eligibility of new hires of the Employer who are working in the United States,

Company ID Number: 513478

whether or not assigned to the contract. Once the Employer begins verifying new hires, such verification of new hires must be initiated within 3 business days after the date of hire. Once enrolled in E-Verify as a Federal contractor with the FAR E-Verify clause, the Employer must initiate verification of employees assigned to the contract within 90 calendar days from the time of enrollment in the system and after the date and selecting which employees will be verified in E-Verify or within 30 days of an employee's assignment to the contract, whichever date is later.

d. Employers that are already enrolled in E-Verify at the time of a contract award but are not enrolled in the system as a Federal contractor with the FAR E-Verify clause: Employers enrolled in E-Verify for 90 days or more at the time of a contract award must use E-Verify to initiate verification of employment eligibility for new hires of the Employer who are working in the United States, whether or not assigned to the contract, within 3 business days after the date of hire. Employers enrolled in E-Verify as other than a Federal contractor with the FAR E-Verify clause, must update E-Verify to indicate that they are a Federal contractor with the FAR E-Verify clause within 30 days after assignment to the contract. If the Employer is enrolled in E-Verify for 90 calendar days or less at the time of contract award, the Employer must, within 90 days of enrollment, begin to use E-Verify to initiate verification of new hires of the contractor who are working in the United States, whether or not assigned to the contract. Such verification of new hires must be initiated within 3 business days after the date of hire. An Employer enrolled as a Federal contractor with the FAR E-Verify clause in E-Verify must initiate verification of each employee assigned to the contract within 90 calendar days after date of contract award or within 30 days after assignment to the contract, whichever is later.

e. Institutions of higher education, State, local and tribal governments and sureties: Federal contractors with the FAR E-Verify clause that are institutions of higher education (as defined at 20 U.S.C. 1001(a)), State or local governments, governments of Federally recognized Indian tribes, or sureties performing under a takeover agreement entered into with a Federal agency pursuant to a performance bond may choose to only verify new and existing employees assigned to the Federal contract. Such Federal contractors with the FAR E-Verify clause may, however, elect to verify all new hires, and/or all existing employees hired after November 6, 1986. The provisions of Article II.D, paragraphs 1.a and 1.b of this MOU providing timeframes for initiating employment verification of employees assigned to a contract apply to such institutions of higher education, State, local and tribal governments, and sureties.

f. Verification of all employees: Upon enrollment, Employers who are Federal contractors with the FAR E-Verify clause may elect to verify employment eligibility of all existing employees working in the United States who were hired after November 6, 1986, instead of verifying only new employees and those existing employees assigned to a covered Federal contract. After enrollment, Employers must elect to do so only in the manner designated by DHS and initiate E-Verify verification of all existing employees within 180 days after the election.

g. Form I-9 procedures for existing employees of Federal contractors with the FAR E-Verify clause: Federal contractors with the FAR E-Verify clause may choose to complete new Forms I-9 for all existing employees other than those that are completely exempt from this process. Federal contractors with the FAR E-Verify clause may also update previously completed Forms I-9 to initiate E-Verify verification of existing employees who are not completely exempt as long as that Form I-9 is complete (including the SSN), complies with

Company ID Number: 513478

Article II.C.5, the employee's work authorization has not expired, and the Employer has reviewed the information reflected in the Form I-9 either in person or in communications with the employee to ensure that the employee's stated basis in section 1 of the Form I-9 for work authorization has not changed (including, but not limited to, a lawful permanent resident alien having become a naturalized U.S. citizen). If the Employer is unable to determine that the Form I-9 complies with Article II.C.5, if the employee's basis for work authorization as attested in section 1 has expired or changed, or if the Form I-9 contains no SSN or is otherwise incomplete, the Employer shall complete a new I-9 consistent with Article II.C.5, or update the previous I-9 to provide the necessary information. If section 1 of the Form I-9 is otherwise valid and up-to-date and the form otherwise complies with Article II.C.5, but reflects documentation (such as a U.S. passport or Form I-551) that expired subsequent to completion of the Form I-9, the Employer shall not require the production of additional documentation, or use the photo screening tool described in Article II.C.5, subject to any additional or superseding instructions that may be provided on this subject in the Supplemental Guide for Federal Contractors. Nothing in this section shall be construed to require a second verification using E-Verify of any assigned employee who has previously been verified as a newly hired employee under this MOU, or to authorize verification of any existing employee by any Employer that is not a Federal contractor with the FAR E-Verify clause.

2. The Employer understands that if it is a Federal contractor with the FAR E-Verify clause, its compliance with this MOU is a performance requirement under the terms of the Federal contract or subcontract, and the Employer consents to the release of information relating to compliance with its verification responsibilities under this MOU to contracting officers or other officials authorized to review the Employer's compliance with Federal contracting requirements.

ARTICLE III

REFERRAL OF INDIVIDUALS TO SSA AND DHS

A. REFERRAL TO SSA

1. If the Employer receives a tentative nonconfirmation issued by SSA, the Employer must print the notice as directed by the E-Verify system and provide it to the employee so that the employee may determine whether he or she will contest the tentative nonconfirmation. The Employer must review the tentative nonconfirmation with the employee in private.

2. The Employer will refer employees to SSA field offices only as directed by the automated system based on a tentative nonconfirmation, and only after the Employer records the case verification number, reviews the input to detect any transaction errors, and determines that the employee contests the tentative nonconfirmation. The Employer will transmit the Social Security Number to SSA for verification again if this review indicates a need to do so. The Employer will determine whether the employee contests the tentative nonconfirmation as soon as possible after the Employer receives it.

3. If the employee contests an SSA tentative nonconfirmation, the Employer will provide the employee with a system-generated referral letter and instruct the employee to visit an SSA office within 8 Federal Government work days. SSA will electronically transmit the result of the referral to the Employer within 10 Federal Government work days of the referral unless it

Company ID Number: 513478

determines that more than 10 days is necessary. The Employer agrees to check the E-Verify system regularly for case updates.

4. The Employer agrees not to ask the employee to obtain a printout from the Social Security Number database (the Numident) or other written verification of the Social Security Number from the SSA.

B. REFERRAL TO DHS

1. If the Employer receives a tentative nonconfirmation issued by DHS, the Employer must print the tentative nonconfirmation notice as directed by the E-Verify system and provide it to the employee so that the employee may determine whether he or she will contest the tentative nonconfirmation. The Employer must review the tentative nonconfirmation with the employee in private.

2. If the Employer finds a photo non-match for an employee who provides a document for which the automated system has transmitted a photo, the employer must print the photo non-match tentative nonconfirmation notice as directed by the automated system and provide it to the employee so that the employee may determine whether he or she will contest the finding. The Employer must review the tentative nonconfirmation with the employee in private.

3. The Employer agrees to refer individuals to DHS only when the employee chooses to contest a tentative nonconfirmation received from DHS automated verification process or when the Employer issues a tentative nonconfirmation based upon a photo non-match. The Employer will determine whether the employee contests the tentative nonconfirmation as soon as possible after the Employer receives it.

4. If the employee contests a tentative nonconfirmation issued by DHS, the Employer will provide the employee with a referral letter and instruct the employee to contact DHS through its toll-free hotline (as found on the referral letter) within 8 Federal Government work days.

5. If the employee contests a tentative nonconfirmation based upon a photo non-match, the Employer will provide the employee with a referral letter to DHS. DHS will electronically transmit the result of the referral to the Employer within 10 Federal Government work days of the referral unless it determines that more than 10 days is necessary. The Employer agrees to check the E-Verify system regularly for case updates.

6. The Employer agrees that if an employee contests a tentative nonconfirmation based upon a photo non-match, the Employer will send a copy of the employee's Form I-551 or Form I-766 to DHS for review by:

- Scanning and uploading the document, or
- Sending a photocopy of the document by an express mail account (paid for at employer expense).

7. If the Employer determines that there is a photo non-match when comparing the photocopied List B document described in Article II.C.5 with the image generated in E-Verify, the Employer must forward the employee's documentation to DHS using one of the means described in the preceding paragraph, and allow DHS to resolve the case.

Company ID Number: 513478

ARTICLE IV

SERVICE PROVISIONS

SSA and DHS will not charge the Employer for verification services performed under this MOU. The Employer is responsible for providing equipment needed to make inquiries. To access E-Verify, an Employer will need a personal computer with Internet access.

ARTICLE V

PARTIES

A. This MOU is effective upon the signature of all parties, and shall continue in effect for as long as the SSA and DHS conduct the E-Verify program unless modified in writing by the mutual consent of all parties, or terminated by any party upon 30 days prior written notice to the others. Any and all system enhancements to the E-Verify program by DHS or SSA, including but not limited to the E-Verify checking against additional data sources and instituting new verification procedures, will be covered under this MOU and will not cause the need for a supplemental MOU that outlines these changes. DHS agrees to train employers on all changes made to E-Verify through the use of mandatory refresher tutorials and updates to the E-Verify User Manual, the E-Verify User Manual for Federal Contractors or the E-Verify Supplemental Guide for Federal Contractors. Even without changes to E-Verify, DHS reserves the right to require employers to take mandatory refresher tutorials. An Employer that is a Federal contractor with the FAR E-Verify clause may terminate this MOU when the Federal contract that requires its participation in E-Verify is terminated or completed. In such a circumstance, the Federal contractor with the FAR E-Verify clause must provide written notice to DHS. If an Employer that is a Federal contractor with the FAR E-Verify clause fails to provide such notice, that Employer will remain a participant in the E-Verify program, will remain bound by the terms of this MOU that apply to participants that are not Federal contractors with the FAR E-Verify clause, and will be required to use the E-Verify procedures to verify the employment eligibility of all newly hired employees.

B. Notwithstanding Article V, part A of this MOU, DHS may terminate this MOU if deemed necessary because of the requirements of law or policy, or upon a determination by SSA or DHS that there has been a breach of system integrity or security by the Employer, or a failure on the part of the Employer to comply with established procedures or legal requirements. The Employer understands that if it is a Federal contractor with the FAR E-Verify clause, termination of this MOU by any party for any reason may negatively affect its performance of its contractual responsibilities.

C. Some or all SSA and DHS responsibilities under this MOU may be performed by contractor(s), and SSA and DHS may adjust verification responsibilities between each other as they may determine necessary. By separate agreement with DHS, SSA has agreed to perform its responsibilities as described in this MOU.

Company ID Number: 513478

D. Nothing in this MOU is intended, or should be construed, to create any right or benefit, substantive or procedural, enforceable at law by any third party against the United States, its agencies, officers, or employees, or against the Employer, its agents, officers, or employees.

E. Each party shall be solely responsible for defending any claim or action against it arising out of or related to E-Verify or this MOU, whether civil or criminal, and for any liability wherefrom, including (but not limited to) any dispute between the Employer and any other person or entity regarding the applicability of Section 403(d) of IIRIRA to any action taken or allegedly taken by the Employer.

F. The Employer understands that the fact of its participation in E-Verify is not confidential information and may be disclosed as authorized or required by law and DHS or SSA policy, including but not limited to, Congressional oversight, E-Verify publicity and media inquiries, determinations of compliance with Federal contractual requirements, and responses to inquiries under the Freedom of Information Act (FOIA).

G. The foregoing constitutes the full agreement on this subject between DHS and the Employer.

H. The individuals whose signatures appear below represent that they are authorized to enter into this MOU on behalf of the Employer and DHS respectively.



Company ID Number: 513478

To be accepted as a participant in E-Verify, you should only sign the Employer's Section of the signature page. If you have any questions, contact E-Verify at 888-464-4218.

Employer Warrior Tractor & Equipment Co., Inc.	
Stanley McCracken	
Name (Please Type or Print)	Title
Electronically Signed	03/01/2012
Signature	Date
Department of Homeland Security – Verification Division	
USCIS Verification Division	
Name (Please Type or Print)	Title
Electronically Signed	03/01/2012
Signature	Date

Information Required for the E-Verify Program

Information relating to your Company:

Company Name:	Warrior Tractor & Equipment Co., Inc.
Company Facility Address:	6801 McFarland Blvd
	Northport, AL 35476
Company Alternate Address:	P O Box 412
	Northport, AL 35476
County or Parish:	TUSCALOOSA
Employer Identification Number:	630588737

Company ID Number: 513478

North American Industry Classification Systems Code:	423
Administrator:	Warrior Tractor and Equipment Co., Inc.
Number of Employees:	100 to 499
Number of Sites Verified for:	1
Are you verifying for more than 1 site? If yes, please provide the number of sites verified for in each State:	
<ul style="list-style-type: none">• ALABAMA 1 site(s)	

Information relating to the Program Administrator(s) for your Company on policy questions or operational problems:

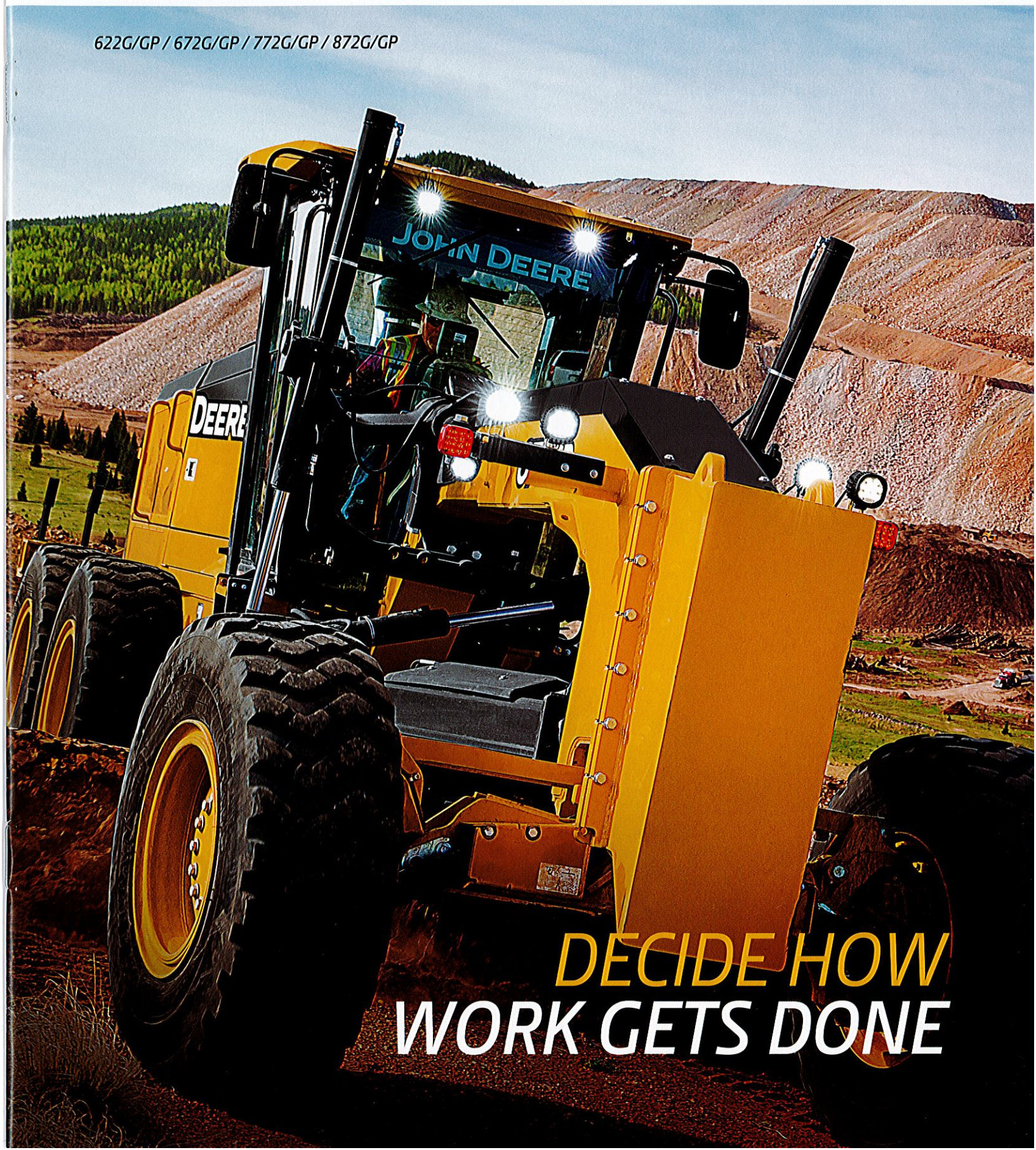
Name:	Stanley N McCracken	Fax Number:	(205) 333 - 0101
Telephone Number:	(205) 339 - 0300		
E-mail Address:	wte024@warriortractor.com		

G-SERIES 6WD
MOTOR GRADERS



JOHN DEERE

622G/GP / 672G/GP / 772G/GP / 872G/GP



**DECIDE HOW
WORK GETS DONE**