

BID SUBMITTAL FORM
Alabama County Joint Bidding Program
Heavy Equipment – Bid Item: Track Mount Excavator Option A-1

Company Name: WARRIOR TRACTOR & EQUIPMENT COMPANY, INC.

Address: 6801 MCFARLAND BLVD W
NORTHPORT, AL 35476

Bid Submitted by: DAVID PATTERSON
(Name of company representative)

Title: SALES MANAGER E-mail address: DAVIDP@WARRIORTRACTOR.COM

Phone: 205-339-0300 Fax: 205-333-0101

By submitting this bid, we agree:

The equipment model number identified below meets the bid specs for this bid item

That the bid price will be honored for all counties for the period from Jan. 1, 2021 to Dec. 31, 2021.

The equipment will be delivered at the bid price to all counties participating in the joint bid program.

The company acknowledges the freight preparation and delivery price is to be included in the total bid price for the standard machine.

The company representative listed above will be the contact person for purchasing this bid item under the joint bid program.

The bid is accompanied by a current catalog or model specification document for the model number identified below.

The bid is accompanied by a copy of the manufacturer's standard warranty as required in the bid specifications.

The bid includes the e-verify documentation required by Alabama law.

If awarded the bid, a performance bond will be provided upon request.

The bid documents include the **Manufacturer's Suggested Retail Price Sheet (MSRP) for the Standard Machine.**

Initials


Total Bid Price for Standard Machine: \$ 227,714.00
(Total Bid Price for Standard Machine Includes Freight Preparation, Delivery and Standard Warranty Costs) *

Freight Preparation and Delivery: \$ 7,000.00
(Included in Standard Machine Bid Price)

Manufacturer's Suggested Retail Price for Standard Machine: \$ 353,503.00

Equipment Model #: JOHN DEERE 300GLC

Description: HYDRAULIC EXCAVATOR OPTION A-1

Signature of company representative submitting bid:



Title: SALES MANAGER

* **NOTE:** Award will be made based on the total cost of the **Standard Machine**. The total cost of the standard machine is to include the freight preparation, delivery and standard warranty cost. Freight preparation, delivery will be excluded from the total bid price of the standard machine in determining the percentage discount for any available options.

BID SUBMITTAL FORM: OPTION COST SHEET

By submitting this bid, we agree:

To offer any available options at the percent difference between the Manufacturer's Suggested Retail Price Sheet and the actual bid price on the Standard Machine*



The bid documents include the **Manufacturer's Suggested Retail Price Sheet (MSRP)** for the Standard Machine



Equipment Model #: JOHN DEERE 300GLC

Description: HDYRAULIC EXCAVATOR OPTION A-1

Signature of company representative submitting bid: 

Title: SALES MANAGER

***Note:** The percent difference between the **Manufacturer's Suggested Retail Price Sheet (MSRP)** for the standard machine as specified by these **Bid Specifications** and the actual price bid by the vendor will be calculated to determine the percentage discount to be applied to any available options. The bid price of the freight preparation, delivery cost shall be excluded in determining the percentage discount to be applied to available options. Any individual county may choose to add any available option to the standard machine at the percentage discount at the time of purchase.

BID SPECIFICATIONS FOR TRACK-MOUNTED EXCAVATOR OPTION A1

GENERAL

These specifications shall be construed as the minimum acceptable standards for a track mounted hydraulic excavator with long undercarriage. Should the manufacturer's current published data or specifications exceed these standards, the manufacturer's standards shall be considered minimum and shall be furnished. All integral parts not specifically mentioned in the scope of these specifications that are necessary to provide a complete working unit shall be furnished. Additionally, the machine offered for bid shall include all standard manufacturers' equipment. The excavator must be a new current production model and shall meet or exceed all EPA and other applicable standards at the time of manufacture.

Use of specific names and numbers in the specifications is not intended to restrict the bidder or any seller or manufacturer, but is intended solely for the purpose of indicating the type, size and quality of equipment considered best adapted to the uses of the counties participating in this joint bid.

BID SUBMITTAL FORM

Each bidder must submit his or her bid on the bid submittal form included in the invitation to bid package. All written warranties to be submitted shall be attached to the bid submittal form.

BID PRICE

The price bid shall include all destination charges, delivery charges, title fees, rebates, and all other applicable costs and refunds.

MANUALS

Each unit shall be provided with one (1) copy of the operator's manual, one [1] repair manual, and one (1) copy of the current parts manual. Units will not be accepted for delivery until the manuals as outlined above are received by the purchaser.

REPLACEMENT PARTS AVAILABILITY

Parts must be available for 5 years or 7,500 hours of use for the piece of equipment. If any replacement parts are not delivered within three (3) working days of an order being placed, the bidder will deliver an equivalent machine for the county to use at no cost to the county until such time as the parts are delivered to the county so it can affect repairs to its machine.

WARRANTY

Bidders shall submit a copy of the manufacturer's standard warranty. Warranty shall include service response time of maximum of 36 hours within notification by county.

Yes No
Page# _____
or
Attachment

WEIGHT

Minimum 68,000 lbs. equipped with minimum 31 inch wide track shoes.

Yes X No ___
Page # 18 & 9

ENGINE

Turbocharged, 6 cylinders with a minimum 400 cubic inch displacement diesel engine capable of a minimum 220 net horsepower.

Yes X No ___
Page # 18

Engine shall be manufactured by the equipment manufacturer.

Yes X No ___
Page # 18

UNDERCARRIAGE

Track length shall be minimum 15' 3".

Yes X No ___
Page # 20

Track shoe width shall be minimum 31" (Triple grouser Shoes)

Yes X No ___
Page # 18

Minimum eight (8) track rollers per side.

Yes X No ___
Page # 18

Minimum two (2) carrier rollers per side.

Yes X No ___
Page # 18

STARTING SYSTEM

24 volt system with a minimum 100 amp alternator.

Yes X No ___
Page # 18

CAPACITIES

Fuel Tank Capacity – 136 gallon minimum

Yes X No ___
Page # 19

Hydraulic Tank Capacity – 40 gallon minimum

Yes X No ___
Page # 19

Engine Coolant – 7 gallon minimum

Yes X No ___
Page # 19

BOOM AND STICK

One piece boom with minimum 19' length

Yes X No ___
Page # 19

Stick shall be a minimum 9' long

Yes X No ___
Page # 19

DIMENSIONS

Reach at ground level – 33' minimum

Yes No
Page # 19

Bucket breakout force (SAE) – minimum 39,000 lbs.

Yes No
Page # 19

Stick digging force (SAE) – minimum 31,000 lbs.

Yes No
Page # 19

Bucket:

Standard with no bucket. Buckets will be considered optional attachments.

HYDRAULICS

Hydraulic pump output shall be a minimum of 120 GPM

Yes No
Page # 18

CAB

Enclosed ROPS cab:

Yes No
Page # 24, ATTACH

Heater

Yes No
Page # 24

Factory installed air conditioning

Yes No
Page # 24

AM/FM radio

Yes No
Page # 24

Suspension seat

Yes No
Page # 24

Defroster

Yes No
Page # 24

Shall be equipped with a 12-volt converter capable of powering a two-way radio.

Yes No
Page # 24

300G LC FT4 EXCAVATOR

31-Aug-2020



Code	Description		
0A20FF	300G LC FT4 EXCAVATOR	1	\$278,442.00
	F.O.B Kernersville, North Carolina for Complete Machine. See DEALER-INSTALLED ATTACHMENT section for additional source notes.		
			Option Codes
1095	Engine Stage IV Emissions	1	\$31,680.00
	John Deere PowerTech PSS 6.8L 223 Net Rated hp (ISO 9249) Turbocharger Charge Air Cooler Electronic Engine Control Unit Auto-Idle System Cool on Demand Hydraulic Driven Fan Antifreeze Protection to -34F (-37C) Enclosed Fan Guard Dual Element Dry-type Air Filter with Restriction Indicator Full Flow Oil Filter Double Fuel Filter Water Separator Underhood Diesel Particulate Filter with Curved Exhaust Automatic Belt Tension Device Glow Plug Start Aid Heavy Duty, Low Maintenance Batteries 100-Amp Alternator - 24 Volt 500 Hour Engine Oil Change Interval 70% (35 degrees) Off Level Capability Engine Oil Sampling Valve		
1600	English Customer Delivery Packet	1	No Added Cost
	English Decals and Customer Delivery Packet		

170C	JDLink Ultimate - 5 Year Subscription	1	No Added Cost
	<p>Includes JDLink hardware: integrated cab wiring harness, antenna, modular telematics gateway (MTG), and now includes all Ultimate Connectivity features – Wireless Data Transfer (WDT) enabling automatic data transfer from TimberMatic and Waratah H16 Measuring Systems to TimberManager and MyJohnDeere, supporting TimberOffice 5 Software. Additionally, Ultimate now includes Limited Internet features supporting optional ForestSight Solutions such as advance mapping systems and Remote Display Access (RDA) features supported by TeamViewer applications. JDLink utilizes cellular and satellite technology infrastructure that is outside the control of John Deere. Changes to that infrastructure may require customers to purchase compatible JDLink hardware to restore functionality. Includes 5 year subscription. Annual subscription renewal required after 5 years for continued functionality. JDLink customer account must be created to access JDLink Ultimate data. Go to www.StellarSupport.com to renew or update JDLink subscriptions. Use of this service, and all rights and obligations of John Deere and the Customer (as identified in the applicable agreement), are governed by the terms and conditions outlined in the applicable Services and Software agreements available at www.JohnDeere.com/Agreements. If these terms and conditions are not agreeable do not proceed and do not use the service.</p>		
3350	Triple Semi-Grouser Shoes	1	No Added Cost
	<p>800 mm (32 In.)</p> <p>Recommended for extremely soft terrain.</p>		
4125	Seat, Standard Mechanical	1	No Added Cost
6835	One Piece Boom with Arm Cylinder and Plumbing	1	\$29,064.00
7901	Less Grade Reference Ready Mounts	1	No Added Cost
7160	Arm with Bucket Cylinder and Linkage	1	\$14,317.00
	<p>3.1 M (10 ft. 2 in.)</p>		
7401	Less Auxiliary Hydraulics	1	No Added Cost
8001	Less Bucket	1	No Added Cost
	<p>Includes bucket mounting pins.</p>		
Total			\$353,503.00

Manufacturer's Suggested List Price shown. Retail prices may vary by dealer. Unless stated otherwise, taxes, freight, setup, delivery and other dealer specific charges not included in the pricing. Options/items noted with anything other than price will have additional costs. Pricing, availability, and specifications subject to change without notice. Special program pricing may be available on certain models. See dealer for details. Prices shown are in U.S. dollars and valid only in the U.S.



JOHN DEERE

Current Date 01Jul2020

300G LC FT4 EXCAVATOR

HYDRAULICS:

Open Center, Load Sensing with Variable Displacement Pumps
Hydraulic Pilot Controls
Axial Piston Swing Motor
Multiple Wet Disk Swing Brake
Auxiliary Valve Section
Adjustable Flow for Attachments Through Monitor
Boom and Arm Reduced Drift Valves
Auto Power Lift
Hydraulic Tank Site Gauge
5,000 Hour Hydraulic Oil Change Interval
Hydraulic Oil Sampling Valve

Inline DEF Filter

UNDERCARRIAGE:

32 In. (800 mm) Triple Grouser Shoes
Two Speed Propel with Auto-Shift
Axial Piston Propel Motors
Propel Motor Shields
Planetary Final Drives
Sealed Track Chain
Front and Center Track Guides
Provisions for Tie Downs
X-Frame Car Body
Hydraulic Track Adjuster
Eight Lower Rollers
Two Upper Rollers
Spring Applied Hydraulic Released Propel Brake

UPPER STRUCTURE:

Right, Left and Counterweight Mirrors
Toolbox
Vandal Locks for:
Cab Door
Service Doors

Debris Screening Side Panel
Remote Mounted Engine Oil and Fuel Filters
Handrails

FRONT ATTACHMENT:

Oil Impregnated Bushings
Reinforced Resin Thrust Plates
Tungsten Carbide Thermal Coating on arm to Bucket Joint
Centralized Lubrication System

Dirt Seals on Bucket Pins
Less Boom
Less Arm
Less Bucket

OPERATOR'S STATION:

JDLink Ultimate Machine Monitoring System w/ 3-year Message Service
Adjustable Control Positions (Levers to Seat, Seat to Pedals)
4" Arm Rests Attached to Side Consoles
Pilot Control Shut-Off Lever
Short Stroke, Low Effort Pilot Levers
Switches for Auxiliary Hydraulic Control on RH Pilot Lever
Deluxe Adjustable Cloth Seat with Suspension, Reclining Backrest, Headrest, and Adjustable Lumbar Support
Multifunction, Color LCD Monitor System with:
Diagnostic Capability
Systems Monitoring Capability
Multiple Language Capability
Maintenance Tracking
Engine Coolant Temperature

Engine Oil Pressure Warning Indicator with Audible Alarm
Fuel Gauge with Low Fuel Indicator

Diesel Exhaust Fluid Gauge
Work Mode Indicator
Auto Idle Indicator
Alternator Charge Indicator
Air Filter Restriction Indicator

Fault Code Alert Indicator
Check Engine Indicator
Wiper Mode Indicator
Work Lights On Indicator
Fuel Rate Display
Clock

Hour Meter

Mode Selection:

One Work Mode
Three Power Modes
Numerous Attachment Modes
Auto-Climate Control/Air Conditioner, Heater with Pressurizer
AM-FM Radio
Rear view camera
Control Pattern Changer
Machine Information Center (MIC)
Windshield Wiper/Washer with Intermittent Speed
12V-60W, 5 Amp Cell Phone Power Outlet
3 In. Retractable Seat Belt
Tinted Safety Glass
Hot/Cold Box Compartment
Horn
Two Cup Holders
Interior Light
Coat Hook
Floor Mat
Motion Alarm with Cancel Switch
Transparent Tinted Roof

Tool Box
Counterweight, 12346 lbs.
(5,600 kg)
Work Lights:
One Mounted on Frame
One Mounted on Boom

Gauge
Engine Coolant Temperature
Warning Indicator with
Audible Alarm

Hatch with Sunshade
Four Fluid-Filled Elastic
Mounts
Easy Access Air Conditioning
Filter

Required - You must select one from each category

▼ **BASE MACHINE**

F.O.B Kernersville, North Carolina for Complete Machine.
See DEALER-INSTALLED ATTACHMENT section for additional source notes.

Description	Code	Price
300G LC FT4 EXCAVATOR	0A20FF	\$278,442.00

▼ **ENGINE**

Description	Code	Price
Engine Stage IV Emissions	1095	\$31,680.00
John Deere PowerTech PSS 6.8L 223 Net Rated hp (ISO 9249) Turbocharger Charge Air Cooler Electronic Engine Control Unit Auto-Idle System Cool on Demand Hydraulic Driven Fan Antifreeze Protection to -34F (-37C) Enclosed Fan Guard Dual Element Dry-type Air Filter with Restriction Indicator Full Flow Oil Filter Double Fuel Filter Water Separator Underhood Diesel Particulate Filter with Curved Exhaust Automatic Belt Tension Device Glow Plug Start Aid Heavy Duty, Low Maintenance Batteries 100-Amp Alternator - 24 Volt 500 Hour Engine Oil Change Interval 70% (35 degrees) Off Level Capability Engine Oil Sampling Valve		

▼ **OPERATOR'S MANUAL AND DECALS**

Non-English Operator's Manuals
Translated Customer Delivery Packets can be ordered using the John Deere Technical Information Bookstore at <http://www.johndeereinfo.com> at no charge. The Translated Delivery Packets include the Operator Manual, Decal Kit, Warranty Information Booklet, and Uptime Maintenance Planner. Search for and order the Translated Delivery Packets by model and language that meets your customer requirements. A listing of all Translated Delivery Packets available can be found by selecting Translated Delivery Packets from the Manual Type dropdown list. Technical support is available by calling 1-866-213-3373.

Description	Code	Price
English Customer Delivery Packet	1600	No Added Cost
English Decals and Customer Delivery Packet		

▼ MACHINE CONNECTIVITY

Machine connectivity functions require cellular coverage. Usage of JDLink /ZXLink System requires customer's acceptance of the terms of the John Deere Telematics System Contract.

Option availability limited by specific geographical regions. Please refer to region specific price pages for appropriate ordering codes.

Description	Code	Price
JDLink Ultimate - 5 Year Subscription	170C	No Added Cost

Includes JDLink hardware: integrated cab wiring harness, antenna, modular telematics gateway (MTG), and now includes all Ultimate Connectivity features Wireless Data Transfer (WDT) enabling automatic data transfer from TimberMatic and Waratah H16 Measuring Systems to TimberManager and MyJohnDeere, supporting TimberOffice 5 Software. Additionally, Ultimate now includes Limited Internet features supporting optional ForestSight Solutions such as advance mapping systems and Remote Display Access (RDA) features supported by TeamViewer applications. JDLink utilizes cellular and satellite technology infrastructure that is outside the control of John Deere. Changes to that infrastructure may require customers to purchase compatible JDLink hardware to restore functionality. Includes 5 year subscription. Annual subscription renewal required after 5 years for continued functionality. JDLink customer account must be created to access JDLink Ultimate data. Go to www.StellarSupport.com to renew or update JDLink subscriptions. Use of this service, and all rights and obligations of John Deere and the Customer (as identified in the applicable agreement), are governed by the terms and conditions outlined in the applicable Services and Software agreements available at www.JohnDeere.com/Agreements. If these terms and conditions are not agreeable do not proceed and do not use the service.

▼ TRACK SHOES

Description	Code	Price
700 mm (28 In.) Triple Semi-Grouser Shoes	3325	(\$1,221.00)

Recommended for general conditions and soft terrain.

Triple Semi-Grouser Shoes	3350	No Added Cost
---------------------------	------	---------------

800 mm (32 In.)
Recommended for extremely soft terrain.

▼ SEAT

Description	Code	Price
Seat, Standard Mechanical	4125	No Added Cost

Seat, Heated Air-Suspension	4130	\$1,366.00
-----------------------------	------	------------

Seat, Premium Leather Thermal Heating and Active Cooling	4135	\$2,731.00
--	------	------------

Active heating and cooling
Air suspension
High seat back
3-way adjustability
High visability orange 3 inch seat belt

▼ BOOM

Description	Code	Price
Less Boom	6801	No Added Cost

Excludes Arm Cylinder, Boom Cylinders and Plumbing on Boom.
Includes Pin Connecting Boom to Mainframe and the Two Boom Cylinder Pins.

Requires code 7001, "Less Arm".
The "Hydraulic Filter Restriction Indicator" in DEALER-INSTALLED ATTACHMENTS is recommended

One Piece Boom with Arm Cylinder and Plumbing	6835	\$29,064.00
---	------	-------------

▼ **GRADE READY/GRADE GUIDANCE**

Description	Code	Price
Less Grade Reference Ready Mounts	7901	No Added Cost

Grade Reference Ready Mounts	7920	\$1,738.00
------------------------------	------	------------

3.1M Arm
Includes mounting points on link, arm, boom, upperstructure, and counterweight for grade reference sensors. Sensors, manufacturing specific mounts, wiring harness, and monitor provided by OEM suppliers.

Grade Reference Ready Mounts	7930	\$1,738.00
------------------------------	------	------------

3.75M Arm
Includes mounting points on link, arm, boom, upperstructure, and counterweight for grade reference sensors. Sensors, manufacturing specific mounts, wiring harness, and monitor provided by OEM suppliers.

▼ **ARM**

Description	Code	Price
Less Arm, Bucket Cylinder, Bucket Linkage and All Attaching Pins and Hoses	7001	No Added Cost

Hydraulic Filter Indicator Recommended. Requires code 8001, Less Buckets.

Arm with Bucket Cylinder and Linkage	7160	\$14,317.00
--------------------------------------	------	-------------

3.1 M (10 ft. 2 in.)

Arm with Bucket Cylinder and Linkage	7180	\$18,839.00
--------------------------------------	------	-------------

Not recommended for impact (hammer) or high density material applications.
3.75 M (12 ft. 4 in.)

▼ **AUXILIARY HYDRAULICS**

Description	Code	Price
Less Auxiliary Hydraulics	7401	No Added Cost

Auxiliary High-Flow Hydraulic w/ 2-Way Foot Controller	7420	\$9,777.00
--	------	------------

Includes Combination piping for 3.1 M Arm (10 ft. 2 in.)

Auxiliary High-Flow Hydraulic w/ 2-Way Foot Controller	7430	\$10,007.00
--	------	-------------

Includes Combination piping
for 3.75 M Arm

Auxiliary High-Flow Hydraulic Lines Only 7440 \$7,690.00

Includes Combination piping
Requires a control circuit such as a foot controller or the standard right-
hand control handle with (2) switches. Also order a solenoid kit.
for 3.1 M Arm

Auxiliary High-Flow Hydraulic Lines Only 7450 \$7,921.00

Includes Combination piping
Requires a control circuit such as a foot controller or the standard right-
hand control handle with (2) switches. Also order a solenoid kit.
for 3.75 M Arm

Auxiliary High-Flow Hydraulic Lines w/ AFL (Electronic
Proportional Control, Pilot Level Mounted) 7490 \$10,800.00

Includes Combination piping
for 3.1 M Arm (10 ft.. 2 in.)

Auxiliary High-Flow Hydraulic Lines w/ AFL (Electronic
Proportional Control, Pilot Level Mounted) 7495 \$11,030.00

Includes Combination piping
for 3.75 M Arm

▼ BUCKETS

All Heavy-Duty and Severe-Duty Buckets come standard with TK-Series Fanggs Teeth.

Description	Code	Price
Less Bucket	8001	No Added Cost

Includes bucket mounting pins.

Heavy-Duty Bucket 8350 \$13,190.00

Includes Six (6) John Deere TK-Series Fanggs Teeth (TK400FD).
54 In. (1375 mm), 2.27 Yd3 (1.74 M3) Heavy-Duty Bucket

Heavy-Duty Bucket 8420 \$10,312.00

Includes Four (4) John Deere TK-Series Fanggs Teeth (TK400FD).
36 In. (914 mm), 1.30 Yd3 (0.99 M3) Heavy-Duty Bucket

Heavy-Duty Bucket 8430 \$11,164.00

Includes Five (5) John Deere TK-Series Fanggs Teeth (TK400FD).
42 In. (1067 mm), 1.59 Yd3 (1.22 M3) Heavy-Duty Bucket

Heavy-Duty Bucket 8440 \$11,878.00

48 In. (1219 mm), 1.88 Yd3 (1.44 M3) Heavy-Duty Bucket
Includes Five (5) John Deere TK-Series Fanggs Teeth (TK400FD).

Optional - Select as desired

▼ HEATER

Description	Code	Price
-------------	------	-------

Engine Block Heater	9015	\$248.00
---------------------	------	----------

▼ FILTER

Description	Code	Price
Fuel Filter, Severe-Duty	9060	\$175.00

Required outside the United States and Canada (required for Canada if equipped with Tier 3 engine).

Engine Air Centrifugal Pre-Cleaner	9070	\$631.00
------------------------------------	------	----------

Recommended for harsh conditions

▼ ENGINE FAN

Description	Code	Price
Automatic Reversing Cooling Fan	9115	\$1,726.00

Features selectable intervals and manual override.
For use in environments with airborne debris.

Single Pedal Propel	9180	\$2,259.00
---------------------	------	------------

▼ EXHAUST

Description	Code	Price
Chrome Exhaust	9700	\$429.00

▼ SHIPPING PREPARATION

Description	Code	Price
Special Export Preparation-- Do not install front for shipping	9803	No Added Cost

For Export Containerization

▼ UNDERCARRIAGE

Description	Code	Price
Track Frame Undercover	9160	\$643.00

▼ LIGHT PACKAGE

Description	Code	Price
Light Package	9150	\$2,258.00

All exterior machine lights are LED
2 Front Cab lights, 1 Rear Cab light, 1 Toolbox Light, 1 Under Engine Hood Light, 1 Left hand and 1 Right hand Boom Lights

▼ BOOM CYLINDERS

Description	Code	Price
Boom Cylinders with Plumbing to Main Frame	9010	\$7,386.00

Boom Cylinders with Plumbing to Main Frame	9011	\$7,386.00
--	------	------------

Requires 6801, Less Boom, and Code 7001, Less Arm.

For use with Super Long Fronts.

ATTACHMENTS FOR FIELD CONVERSION

F.O.B. Dubuque, Iowa for dealer-installed kits, except where noted. Some of the following kits may require additional parts for a complete installation. Prior to ordering, check the installation instructions by going to www.johndeereinfo.com and clicking on Library, or by clicking on this Hyperlink ([Installation Bulletin Search](#)), and insert the AT number to retrieve the attachment installation instruction bulletin for additional parts. Exception to above note is FRONTIER Dealer Installed Kits.

All attachments are sold as a quantity of one.

Description	Code	Price
<u>Buckets, Heavy-duty</u>		
36 In (914 mm), 0.97 yd3 (0.74 M3) Heavy-Duty Bucket Includes Four (4) John Deere TK-Series Fanggs Teeth (TK400FD)	BYT11162	\$6,672.00
42 In (1067 mm), 1.19 yd3 (0.91 M3) Heavy-Duty Bucket Includes Five (5) John Deere TK-Series Fanggs Teeth (TK400FD).	BYT11163	\$7,339.00
48 In (1219 mm), 1.39 yd3 (1.06 M3) Heavy-Duty Bucket Includes Six (6) John Deere TK-Series Fanggs Teeth (TK400FD)	BYT11164	\$7,899.00
54 In (1372 mm), 1.61 yd3 (1.23 M3) Heavy-Duty Bucket Includes Six (6) John Deere TK-Series Fanggs Teeth (TK400FD)	BYT11165	\$8,223.00
60IN (1525MM) 2.09YD (1.60 M3) HD Bucket Includes Seven (7) TK400 Series Teeth.	BYT11166	\$8,799.00
<u>Buckets, Side Cutters</u>		
Edge Protector Kit	AT342511	\$618.00
Side-Cutter Kit, 3 inch	AT342512	\$641.00
Side-Cutter Kit, 6 inch	AT342513	\$641.00
<u>Cold Start</u>		
Engine Coolant Heater, 110 Volt, (1000 Watt)	AT390826	\$311.00
<u>Guards</u>		
Cab FOPS Guard FOPS Level II, ISO 10262 Certified	AT390802	\$3,073.00
<u>Hydraulic Couplers</u>		
Hydraulic Quick Coupler (Non-Variable type) - Coupler and Controls Kit Includes non-variable hydraulic quick coupler with hydraulic and electrical control components	AT452019	\$9,454.00

Hydraulic Quick Coupler (Variable-type Pin-Grabber) - Coupler Only	BYT11631	\$12,364.00
<p>Coupler kit ONLY. Includes coupler, jumper hoses, and one set of dead pins. Controls components NOT included. Also purchase Controls Kit BYT11632 (250G/ZX) or BYT11633 (300G/ZX; 345G/ZX). Not compatible with hydraulic thumb AT379652, AT379653, AT379654, or AT379655 (250G/ZX). Not compatible with hydraulic thumb AT389951, AT389948, AT379658, or AT379659 (300G/ZX; 345G/ZX).</p>		
Hydraulic Quick Coupler Controls Kit, (Variable-type Pin-Grabber) - Controls Kit Only	BYT11633	\$1,521.00
<p>Controls kit ONLY. Includes hydraulic control components, electrical control components and components to manifold on end of arm. Does not include hydraulic quick coupler - also purchase BYT11631. May not be required if replacing existing hydraulic quick coupler.</p>		
Installation Charge for Hydraulic Quick Coupler	AT345608	\$1,387.00
<p>When ordering Hydraulic Quick Coupler (Variable-type Pin-Grabber) must order both Coupler and Controls attachment kits. Installation Charge Order also requires attachment part number, SHIP-TO address for Paladin Custom Works, AND reference related machine order number. The related machine order must reference the attachment order number. Order code available only for Kernersville, North Carolina installations.</p>		
Hydraulic Thumb Kits		
Deere/Hitachi Hydraulic Thumb Installation	AT339844	\$1,967.00
<p>Labor for installation of Deere/Hitachi thumb at Paladin Customworks Kernersville, NC.</p>		
Hydraulic Thumb Kit, Direct	AT389951	\$9,894.00
<p>Teeth matching between the bucket and thumb will depend on the bucket width, number of teeth, and tooth spacing. Please see DMAC solution 94331 for optimum thumb and bucket teeth engagement. Not compatible with couplers.</p>		
Hydraulic Thumb Kit, Direct for Couplers	AT389949	\$9,894.00
<p>Teeth matching between the bucket and thumb will depend on the bucket width, number of teeth, and tooth spacing. Please see DMAC solution 94331 for optimum thumb and bucket teeth engagement. Not compatible with Hydraulic Quick Coupler (Variable-type Pin-Grabber) BYT11631.</p>		
Hydraulic Thumb Kit, Progressive	AT379658	\$11,639.00
<p>Teeth matching between the bucket and thumb will depend on the bucket width, number of teeth, and tooth spacing. Please see DMAC solution 94331 for optimum thumb and bucket teeth engagement. Only available for the following arm lengths: 300/345 3.75M (12'4") Not compatible with couplers.</p>		
Hydraulic Thumb Kit, Progressive for Couplers	AT379659	\$11,639.00

Teeth matching between the bucket and thumb will depend on the bucket width, number of teeth, and tooth spacing.
Please see DMAC solution 94331 for optimum thumb and bucket teeth engagement.

Only available for the following arm lengths:

300/345 3.75M (12'4")

Not compatible with Hydraulic Quick Coupler (Variable-type Pin-Grabber) BYT11631.

Hydraulics

Anti-Drift Valve with Plumbing and Hardware, Arm Cylinder	AT327659	\$3,100.00
---	----------	------------

For ZX350LC-3,ZX350LC-5,ZX380LC-5N machines also order the following parts:

AT332580 Hydraulic Hose

M44269 Spacer

T153064 Clamp

14M7415 Nut M12

24M7404 Washer (2 used)

4053698 Clamp

For 350DLC,350GLC,380GLC machines also order the following parts:

AT332580 Hydraulic Hose

M44269 Spacer

T153064 Clamp

14M7415 Nut M12

24M7404 Washer (2 used)

4053698 Clamp

Auxiliary High-Flow Hydraulic Lines for 300G/350G	AT442310	\$6,615.00
---	----------	------------

Boom Cylinder Anti-Drift Valve with Plumbing and Hardware	AT453870	\$3,567.00
---	----------	------------

Control Handle for Auxiliary Hydraulics, Left-Hand	AT327652	\$525.00
--	----------	----------

Requires control solenoid for either 1-way or 2-way auxiliary hydraulics.
Recommended for use with auxiliary hydraulic lines.

Control Solenoid for 1-way Auxiliary Hydraulics with Foot Switch	AT446155	\$950.00
--	----------	----------

Does not use the monitor for flow control.
Does not require solenoids for auxiliary hydraulics.
Includes foot switch, solenoid, wiring, and hoses.

Control Solenoids for 2-Way Auxiliary Hydraulics	AT445467	\$800.00
--	----------	----------

Monitor can be used to control hydraulic flow.
Can be used with either right-hand or left-hand control handle.

Hydraulic Filter Restriction Indicator Kit	AT445803	\$789.00
--	----------	----------

Two-Pump Combined Flow Piping	AT327836	\$1,674.00
-------------------------------	----------	------------

For attachments that require additional hydraulic flow.

Operator Environment

Exterior Work Lights Package	AT396663	\$741.00
------------------------------	----------	----------

Additional 2 Cab lights, with 1 Right hand Boom Light.

Full Length Front Guards	BYT11141	\$1,532.00
Stereo adapter for phone or music device.	ETN93549	\$224.00

Applicable for machines before SN 1FF300GXVJF730846

Overall Vehicle

Vandal Covers	BYT11005	\$3,023.00
---------------	----------	------------

After Serial # 30847

Powertrain & Cooling

Automatic Reversing Cooling Fan	AT453858	\$2,030.00
---------------------------------	----------	------------

Features selectable intervals and manual override.
For use in environments with airborne debris.
Installation time 2 hours.

▼ REFERRAL ATTACHMENTS

Description	Code	Price
<u>G.r.mfg.</u> G.R. Manufacturing, Inc. * Kits listed below must be ordered through John Deere. * F.O.B. Trussville, Alabama * All kits include installation instructions * All warranty, repair parts, technical support and assistance, and sales support and assistance will be the responsibility of G.R. Manufacturing, Inc., and will be handled directly between the Dealer and G.R. Manufacturing, Inc. G.R. Manufacturing, Inc. 4800 Commerce Drive Trussville, Alabama 35173 Phone: (800)841-8001 Fax: (205)655-8005		
Auxiliary Counterweight, 2250 lbs.	BYT11004	\$6,569.00
Front Window Guard, Polycarbonate	ETN210311	\$2,570.00
Guard, Slant Top Rub Rails	AT401260	\$1,946.00

STANDARD WARRANTY FOR NEW JOHN DEERE CONSTRUCTION, UTILITY, CCE AND FORESTRY PRODUCTS – US & Canada

- **Construction, Forestry & Compact Construction Equipment (CCE) Products***: 12 months Full Machine Standard Warranty
- * **Compact Construction Equipment Products** Delivered and settled on or after 01 June 2018: 24 months or 2000 hours (whichever comes first) Full Machine Standard Warranty
- **C&E Series Pull-Type Scrapers**: 6 months Full Machine Standard Warranty
- **DC & DE Series Pull-Type Scrapers**: 12 months Full Machine Standard Warranty
- **Scraper Tractors**: 24 Months or 2000 Hours (whichever occurs first) Full Machine Standard Warranty
- **Forestry Attachments**: 12 Months or 2000 Hours (whichever occurs first) Full Machine Standard Warranty
- **Frontier Equipment**: 6 months Full Machine Standard Warranty (90 days in rental applications)

The "Standard Warranty" is part of the warranty protection package available from John Deere Construction & Forestry Company (John Deere Limited in Canada) ("John Deere") to purchasers of new John Deere products ("product"):

STANDARD Warranty is John Deere's standard new product warranty, described in this document, provided at no additional charge to the purchaser.

EXTENDED Warranty is a separate repair contract made available by John Deere for purchasers who wish to complement their Standard Warranty coverage. Complete Extended Warranty details, including coverage options and limitations, are set forth in the Application for Extended Warranty, which is available from authorized John Deere dealers.

STRUCTURALL Warranty applies to certain structural components as listed below and as described in this document.

FACTORY-INSTALLED UNDERCARRIAGE Warranty applies to certain undercarriage components as listed below and as described in this document.

A. STANDARD WARRANTY - GENERAL PROVISIONS

John Deere will repair or replace, at its option, any parts (except those specified below) of a new John Deere product that, as delivered to the original retail purchaser(s), are defective in material or workmanship. Performance of this warranty will be free of charge for parts and labor/labour, except as otherwise stated below. Standard Warranty applies only to purchases from John Deere and authorized John Deere dealers and, except as otherwise provided in the next sentence and section L below, is extended only to the original retail purchaser of the product. Remaining Standard Warranty applicable to a used John Deere product is transferred to a subsequent purchaser of the product only if the subsequent purchaser requests a transfer from an authorized John Deere dealer before the product's Standard Warranty expires. Coverage begins on the date of delivery of the product to the original retail purchaser. For purposes of this warranty, a product that has been rented, used for demonstration purposes for 150 or more hours, or otherwise used prior to its original retail purchase has been "used" for the total duration of such use. Warranty statements required by law covering engine emissions-related parts and components are found on a separate written warranty certificate provided to the purchaser at the time of the original retail purchase.

B. WHAT IS COVERED BY STANDARD WARRANTY -

All parts of a new John Deere product (except those noted in Sections D and E below) are covered during the Standard Warranty period set out above.

C. EXCLUSIVE REMEDY -

The repair or replacement of covered parts or components that are defective, as provided in Sections A, B, D.2 and D.3 herein, shall be the purchaser's exclusive remedy for any defect in the product. However, if after repeated attempts such repair or replacement fails to correct the performance problem caused by the defect, the purchaser's sole remedy shall be a refund of the amount paid for the product (in exchange for a return of the product), excluding any transportation charges, license fees, taxes and insurance premiums, and less a reasonable allowance for use of the product prior to its return. In no event will the dealer, John Deere or any company affiliated with John Deere be liable for any incidental or consequential damages, including but not limited to loss of profits, rental of substitute equipment or other commercial loss. Correction of defects in the manner provided above shall constitute fulfillment of all liabilities of the Dealer, John Deere, or any company affiliated with John Deere to the purchaser or any other

person, whether based upon contract, tort, strict liability, or otherwise. This limitation does not apply to claims for personal injury.

D. ITEMS COVERED SEPARATELY -

1. Standard Warranty does not apply to batteries, radios, tires, cameras, or to Cummins, MTU or Detroit Diesel Engines installed in John Deere products, which are covered by separate written warranties.
2. Factory-Installed Undercarriage Warranty covers all non-rubberized factory-installed undercarriage wear components for 3 years or 4,000 hours from the date of delivery to the original retail purchaser, whichever occurs first (unless terminated earlier under Section F, below). For purposes of this warranty, a product that has been rented, used for demonstration purposes for 150 or more hours, or otherwise used prior to its original retail purchase has been "used" for the total duration of such use. In addition to the items listed in section E below, Factory-Installed Undercarriage Warranty does not cover: failures due to wear, machine application, maintenance practices, or improper machine configuration; removal and installation labor/labour; transportation or hauling costs; unapproved parts; non-wear items; and rubberized undercarriage components such as rubber tracks. Warranty claims will be pro-rated based upon wear of the failed component and whether track shoe width is approved by John Deere. Factory-Installed Undercarriage Warranty does not apply to Scraper Tractors.
3. StructurALL Warranty for new John Deere Products (except Compact Excavators & Loaders, Skid-Steer Loaders, Compact Track Loaders, Scraper Tractors, Pull-Type Scrapers, and Forestry Attachments, which are not eligible for StructurALL Warranty) begins at the date of delivery to the original retail purchaser and ends (unless terminated earlier under Section F, below) after three (3) years, or 10,000 hours (whichever occurs first). For purposes of this warranty, a product that has been rented, used for demonstration purposes for 150 or more hours, or otherwise used prior to its original retail purchase has been "used" for the total duration of such use. **StructurALL Warranty applies only to the following structural components listed below as installed on the product at the time of original manufacture.** If a particular component is not listed below it is not covered by StructurALL Warranty.

Arm; Articulation Joint (incl. pins & bushings); Bin Frame; Boom; Carbody; C-Frame*; Circle Frame; Coupler (John Deere built ONLY); Dipperstick; Draft Frame; Engine Frame; Equipment Frame; Grapple Arch and Grapple Boom; Loader Arm; Loader Frame; Mainframe; Moldboard Lift Arm; NeverGrease™ Pin Joints [Includes steering pin and bushing joints (standard equipment), roller elements (roller bearings) in bucket to boom joints and sliding elements (bushing) for boom and linkage joints (optional equipment)]; Rollover Protection Structure (ROPS); Side Frame; Swing Frame; Track Frame; Undercarriage Frame; X-Frame; Z-bar loader linkage (including bell crank and bucket driver link); Specialty booms and arms marketed as "heavy duty" by John Deere.

Items Covered by StructurALL for Cut-to-Length Forestry Machines: Front frame (welded assembly); Rear frame (welded assembly); Crane king post with basement; Middle joint frame; Cabin swing frame; Main Boom

StructurALL Warranty does not apply to:

1. Any product used primarily in extreme duty or severe duty applications such as but not limited to: demolition and wrecking, chemical plant (including fertilizer plants), salt mines, steel mill, land fill and transfer stations, scrap handling, scarifying and other applications that are similarly destructive or similarly heavy duty except specialty booms and arms as stated in Section D.3 above.
2. C-Frames on H-Series & J-Series Crawlers equipped with root rakes or used in forestry applications unless equipped with an "extreme duty" reinforcement package.
3. Cut-to-Length Forestry Heads and Slash Bundler Units.
4. Crawlers equipped with optional side booms.
5. Cut-to-Length Forestry, Excavator, and Log Loader swing bearings.
6. Motor Graders equipped with front- or rear-mounted snow wings.

E. ITEMS NOT COVERED -

John Deere is NOT responsible for the following:

1. Freight
2. Adjustments to compensate for wear, for periodic maintenance or adjustments that result from normal wear and tear.
3. Damage caused by unapproved adjustments (electronic or mechanical) to machine or machine components outside of published specifications including but not limited to engine, hydraulic components and relief valves.
4. Program updates, calibrations, and pressure adjustments.
5. Diagnostic Time
6. Additional Labor/Labour Time - Above SPG/Labor/Labour Rate
7. Additional Cleaning - Above SPG/Labor/Labour Rate
8. Rental Fees
9. Depreciation or damage caused by normal wear or application, lack of reasonable and proper maintenance, failure to follow operating instructions, misuse, negligence, collision or other accidents.
10. Premiums charged for Overtime Labor/Labour
11. Transportation to and from the dealership.
12. Travel time, mileage or service calls by the dealer.
13. Non-John Deere components or modifications, Rotobec grapples, and attachments installed aftermarket.
14. Shop supplies and maintenance items such as, but not limited to: filters, fuels, oil, hydraulic fluid, lubricants, coolants, conditioners, shop towels, cleaners and degreasers. Note: Reimbursement for refills of oils/coolants lost due to a warrantable failure is covered when a system failure occurs outside the boundaries of a normal oil change (within 25% of specified change interval as provided in the Operator's Manual).
15. Torn, cut, or worn hoses.
16. Wear items, such as, but not limited to: body liner, belts, blades, bulbs, lubricated joints (including pins and bushings), dry brakes, brake linings, dry clutch linings, saw blades, chains, skidder grapple shocks, color marking nozzles, and articulation bumpers.
17. Items such as cutting-edge parts, delimiting knives, bucket teeth and rubber track are not warranted for depreciation or damage caused by normal wear, lack of proper maintenance, misuse, failure to follow operating instructions, the elements or accident.
18. Any defect in a non-covered component, or damage to or failure of a covered component caused by a defect in a non-covered component.
19. Secondary damage which occurs from continued operation of a product after recognition of the occurrence of a failure.
20. Parts supplied or modifications done by third party suppliers.
21. Topping off fluids when fluid levels fall in the range between low and full
22. Parts/Kits not ordered on machine and installed aftermarket. These parts will be covered by any applicable parts warranty.
23. Attachments installed aftermarket – i.e. Winch not installed at factory.
24. Custom options installed outside the factory – i.e. G.R. Manufacturing option packages.
25. Used Products (except as otherwise provided in section L below).

F. TERMINATION OF WARRANTY-

John Deere is relieved of its obligations under Standard Warranty, StructurALL Warranty, Factory-Installed Undercarriage Warranty and/or Extended Warranty if:

1. Service (other than normal maintenance and replacement of service items) is performed by someone other than an authorized John Deere dealer; or
2. The product is modified or altered in ways not approved by John Deere; or
3. Any unapproved or improperly sized attachment is installed on the product. Approval and attachment size shall be at John Deere's sole discretion. (Consult dealer prior to installing attachments or product modification).
4. The product is moved outside the US and/or Canada.

G. PARTS REPLACED UNDER WARRANTY -

Only new or remanufactured parts or components furnished or approved by John Deere, will be used if John Deere elects to repair the product. If any such part or component is defective in material or workmanship when installed in the product, John Deere will repair or replace, as it elects, such defective part or component, provided the defect is

reported to an authorized John Deere dealer within 90 days of installation or before expiration of the applicable Standard Warranty, Factory-Installed Undercarriage Warranty and/or StructurALL Warranty whichever is later.

H. TELEMATICS

NOTICE: Products may be equipped with telematics hardware and software ("Telematics") that transmit data to John Deere/ Dealer. Purchaser may deactivate Telematics at www.jdlink.com.

Notwithstanding Purchaser's right, title or interest in the Products, Purchaser agrees that John Deere and Dealer (their affiliates, successors and assigns), without further notice to Purchaser have the right to:

1. Access, use, collect and disclose any data generated by, collected by, or stored in, Products or any hardware or devices interfacing with Products ("Machine Data");
2. Access Machine Data directly through data reporting devices integrated within, or attached to, Products, including Telematics ("Data Reporting Systems"); and
3. Update the Data Reporting Systems software from time to time. Machine Data will only be used in accordance with John Deere's Machine Data Policy, located at www.JohnDeere.com/MachineDataPolicy.

I. OBTAINING WARRANTY SERVICE -

To obtain warranty service, the purchaser must request warranty service from a John Deere dealer authorized to sell the product to be serviced. When making such a request, the purchaser must present evidence of the product's delivery date, make the product available at the dealer's place of business, and inform the dealer in what way the purchaser believes the product to be defective. Standard Warranty, Factory-Installed Undercarriage Warranty and/or StructurALL Warranty repairs may be made in the field if the purchaser and servicing dealer so desire. However, John Deere will not be responsible for any charges (such as dealer travel time, mileage or extra labor/labour) that would not have been incurred had the product been repaired at the dealer's place of business.

J. NO IMPLIED WARRANTY, CONDITIONS OR OTHER REPRESENTATION -

Where permitted by law, neither John Deere nor any company affiliated with it makes any warranties, representations, conditions or promises, express or implied, as to the quality, performance, or freedom from defect of its products, other than those set forth in this document and **NO IMPLIED WARRANTY OF MERCHANTABILITY, CONDITIONS OR FITNESS IS MADE.**

K. NO DEALER WARRANTY -

The selling dealer makes no warranty of its own on any item covered by this warranty, and makes no warranty on other items unless the dealer delivers to the purchaser a separate written warranty certificate specifically warranting the item. **The dealer has no authority to make any representation or promise on behalf of John Deere, or to modify the terms or limitations of this warranty in any way.**

L. USED JOHN DEERE PRODUCTS ONLY -

John Deere will transfer remaining Standard Warranty, Factory-Installed Undercarriage Warranty and/or StructurALL Warranty to the purchaser of a used John Deere construction and/or forestry product that has been used for less than the full warranty period provided at the product's original retail purchase. This transfer is not effective until change of ownership is registered by a John Deere dealer. **ALL THE TERMS, INCLUDING LIMITATIONS AND EXCLUSIONS, OF THE JOHN DEERE STANDARD WARRANTY, FACTORY-INSTALLED UNDERCARRIAGE WARRANTY, AND/OR STRUCTURALL WARRANTY ORIGINALLY PROVIDED FOR THE PRODUCT REMAIN IN EFFECT AND APPLICABLE.**

Company ID Number: 513478

THE E-VERIFY PROGRAM FOR EMPLOYMENT VERIFICATION MEMORANDUM OF UNDERSTANDING

ARTICLE I

PURPOSE AND AUTHORITY

This Memorandum of Understanding (MOU) sets forth the points of agreement between the Department of Homeland Security (DHS) and Warrior Tractor & Equipment Co., Inc. (Employer) regarding the Employer's participation in the Employment Eligibility Verification Program (E-Verify). This MOU explains certain features of the E-Verify program and enumerates specific responsibilities of DHS, the Social Security Administration (SSA), and the Employer. E-Verify is a program that electronically confirms an employee's eligibility to work in the United States after completion of the Employment Eligibility Verification Form (Form I-9). For covered government contractors, E-Verify is used to verify the employment eligibility of all newly hired employees and all existing employees assigned to Federal contracts or to verify the entire workforce if the contractor so chooses.

Authority for the E-Verify program is found in Title IV, Subtitle A, of the Illegal Immigration Reform and Immigrant Responsibility Act of 1996 (IIRIRA), Pub. L. 104-208, 110 Stat. 3009, as amended (8 U.S.C. § 1324a note). Authority for use of the E-Verify program by Federal contractors and subcontractors covered by the terms of Subpart 22.18, "Employment Eligibility Verification", of the Federal Acquisition Regulation (FAR) (hereinafter referred to in this MOU as a "Federal contractor with the FAR E-Verify clause") to verify the employment eligibility of certain employees working on Federal contracts is also found in Subpart 22.18 and in Executive Order 12989, as amended.

ARTICLE II

FUNCTIONS TO BE PERFORMED

A. RESPONSIBILITIES OF SSA

1. SSA agrees to provide the Employer with available information that allows the Employer to confirm the accuracy of Social Security Numbers provided by all employees verified under this MOU and the employment authorization of U.S. citizens.
2. SSA agrees to provide to the Employer appropriate assistance with operational problems that may arise during the Employer's participation in the E-Verify program. SSA agrees to provide the Employer with names, titles, addresses, and telephone numbers of SSA representatives to be contacted during the E-Verify process.
3. SSA agrees to safeguard the information provided by the Employer through the E-Verify program procedures, and to limit access to such information, as is appropriate by law, to individuals responsible for the verification of Social Security Numbers and for evaluation of the E-Verify program or such other persons or entities who may be authorized by SSA as governed

Company ID Number: 513478

by the Privacy Act (5 U.S.C. § 552a), the Social Security Act (42 U.S.C. 1306(a)), and SSA regulations (20 CFR Part 401).

4. SSA agrees to provide a means of automated verification that is designed (in conjunction with DHS's automated system if necessary) to provide confirmation or tentative nonconfirmation of U.S. citizens' employment eligibility within 3 Federal Government work days of the initial inquiry.

5. SSA agrees to provide a means of secondary verification (including updating SSA records as may be necessary) for employees who contest SSA tentative nonconfirmations that is designed to provide final confirmation or nonconfirmation of U.S. citizens' employment eligibility and accuracy of SSA records for both citizens and non-citizens within 10 Federal Government work days of the date of referral to SSA, unless SSA determines that more than 10 days may be necessary. In such cases, SSA will provide additional verification instructions.

B. RESPONSIBILITIES OF DHS

1. After SSA verifies the accuracy of SSA records for employees through E-Verify, DHS agrees to provide the Employer access to selected data from DHS's database to enable the Employer to conduct, to the extent authorized by this MOU:

- Automated verification checks on employees by electronic means, and
- Photo verification checks (when available) on employees.

2. DHS agrees to provide to the Employer appropriate assistance with operational problems that may arise during the Employer's participation in the E-Verify program. DHS agrees to provide the Employer names, titles, addresses, and telephone numbers of DHS representatives to be contacted during the E-Verify process.

3. DHS agrees to make available to the Employer at the E-Verify Web site and on the E-Verify Web browser, instructional materials on E-Verify policies, procedures and requirements for both SSA and DHS, including restrictions on the use of E-Verify. DHS agrees to provide training materials on E-Verify.

4. DHS agrees to provide to the Employer a notice, which indicates the Employer's participation in the E-Verify program. DHS also agrees to provide to the Employer anti-discrimination notices issued by the Office of Special Counsel for Immigration-Related Unfair Employment Practices (OSC), Civil Rights Division, U.S. Department of Justice.

5. DHS agrees to issue the Employer a user identification number and password that permits the Employer to verify information provided by employees with DHS's database.

6. DHS agrees to safeguard the information provided to DHS by the Employer, and to limit access to such information to individuals responsible for the verification of employees' employment eligibility and for evaluation of the E-Verify program, or to such other persons or entities as may be authorized by applicable law. Information will be used only to verify the accuracy of Social Security Numbers and employment eligibility, to enforce the Immigration and

Company ID Number: 513478

Nationality Act (INA) and Federal criminal laws, and to administer Federal contracting requirements.

7. DHS agrees to provide a means of automated verification that is designed (in conjunction with SSA verification procedures) to provide confirmation or tentative nonconfirmation of employees' employment eligibility within 3 Federal Government work days of the initial inquiry.

8. DHS agrees to provide a means of secondary verification (including updating DHS records as may be necessary) for employees who contest DHS tentative nonconfirmations and photo non-match tentative nonconfirmations that is designed to provide final confirmation or nonconfirmation of the employees' employment eligibility within 10 Federal Government work days of the date of referral to DHS, unless DHS determines that more than 10 days may be necessary. In such cases, DHS will provide additional verification instructions.

C. RESPONSIBILITIES OF THE EMPLOYER

1. The Employer agrees to display the notices supplied by DHS in a prominent place that is clearly visible to prospective employees and all employees who are to be verified through the system.

2. The Employer agrees to provide to the SSA and DHS the names, titles, addresses, and telephone numbers of the Employer representatives to be contacted regarding E-Verify.

3. The Employer agrees to become familiar with and comply with the most recent version of the E-Verify User Manual.

4. The Employer agrees that any Employer Representative who will perform employment verification queries will complete the E-Verify Tutorial before that individual initiates any queries.

A. The Employer agrees that all Employer representatives will take the refresher tutorials initiated by the E-Verify program as a condition of continued use of E-Verify.

B. Failure to complete a refresher tutorial will prevent the Employer from continued use of the program.

5. The Employer agrees to comply with current Form I-9 procedures, with two exceptions:

- If an employee presents a "List B" identity document, the Employer agrees to only accept "List B" documents that contain a photo. (List B documents identified in 8 C.F.R. § 274a.2(b)(1)(B)) can be presented during the Form I-9 process to establish identity.) If an employee objects to the photo requirement for religious reasons, the Employer should contact E-Verify at 888-464-4218.

- If an employee presents a DHS Form I-551 (Permanent Resident Card) or Form I-766 (Employment Authorization Document) to complete the Form I-9, the Employer agrees to make a photocopy of the document and to retain the photocopy with the employee's Form I-9. The photocopy must be of sufficient quality to allow for verification of the photo

Company ID Number: 513478

and written information. The employer will use the photocopy to verify the photo and to assist DHS with its review of photo non-matches that are contested by employees. Note that employees retain the right to present any List A, or List B and List C, documentation to complete the Form I-9. DHS may in the future designate other documents that activate the photo screening tool.

6. The Employer understands that participation in E-Verify does not exempt the Employer from the responsibility to complete, retain, and make available for inspection Forms I-9 that relate to its employees, or from other requirements of applicable regulations or laws, including the obligation to comply with the antidiscrimination requirements of section 274B of the INA with respect to Form I-9 procedures, except for the following modified requirements applicable by reason of the Employer's participation in E-Verify: (1) identity documents must have photos, as described in paragraph 5 above; (2) a rebuttable presumption is established that the Employer has not violated section 274A(a)(1)(A) of the Immigration and Nationality Act (INA) with respect to the hiring of any individual if it obtains confirmation of the identity and employment eligibility of the individual in good faith compliance with the terms and conditions of E-Verify; (3) the Employer must notify DHS if it continues to employ any employee after receiving a final nonconfirmation, and is subject to a civil money penalty between \$550 and \$1,100 for each failure to notify DHS of continued employment following a final nonconfirmation; (4) the Employer is subject to a rebuttable presumption that it has knowingly employed an unauthorized alien in violation of section 274A(a)(1)(A) if the Employer continues to employ an employee after receiving a final nonconfirmation; and (5) no person or entity participating in E-Verify is civilly or criminally liable under any law for any action taken in good faith based on information provided through the confirmation system. DHS reserves the right to conduct Form I-9 and E-Verify system compliance inspections during the course of E-Verify, as well as to conduct any other enforcement activity authorized by law.

7. The Employer agrees to initiate E-Verify verification procedures for new employees within 3 Employer business days after each employee has been hired (but after the Form I-9 has been completed), and to complete as many (but only as many) steps of the E-Verify process as are necessary according to the E-Verify User Manual, or in the case of Federal contractors with the FAR E-Verify clause, the E-Verify User Manual for Federal Contractors. The Employer is prohibited from initiating verification procedures before the employee has been hired and the Form I-9 completed. If the automated system to be queried is temporarily unavailable, the 3-day time period is extended until it is again operational in order to accommodate the Employer's attempting, in good faith, to make inquiries during the period of unavailability. Employers may initiate verification by notating the Form I-9 in circumstances where the employee has applied for a Social Security Number (SSN) from the SSA and is waiting to receive the SSN, provided that the Employer performs an E-Verify employment verification query using the employee's SSN as soon as the SSN becomes available.

8. The Employer agrees not to use E-Verify procedures for pre-employment screening of job applicants, in support of any unlawful employment practice, or for any other use not authorized by this MOU. Employers must use E-Verify for all new employees, unless an Employer is a Federal contractor that qualifies for the exceptions described in Article II.D.1.c. Except as provided in Article II.D, the Employer will not verify selectively and will not verify employees hired before the effective date of this MOU. The Employer understands that if the Employer

Company ID Number: 513478

uses the E-Verify system for any purpose other than as authorized by this MOU, the Employer may be subject to appropriate legal action and termination of its access to SSA and DHS information pursuant to this MOU.

9. The Employer agrees to follow appropriate procedures (see Article III. below) regarding tentative nonconfirmations, including notifying employees in private of the finding and providing them written notice of the findings, providing written referral instructions to employees, allowing employees to contest the finding, and not taking adverse action against employees if they choose to contest the finding. Further, when employees contest a tentative nonconfirmation based upon a photo non-match, the Employer is required to take affirmative steps (see Article III.B. below) to contact DHS with information necessary to resolve the challenge.

10. The Employer agrees not to take any adverse action against an employee based upon the employee's perceived employment eligibility status while SSA or DHS is processing the verification request unless the Employer obtains knowledge (as defined in 8 C.F.R. § 274a.1(l)) that the employee is not work authorized. The Employer understands that an initial inability of the SSA or DHS automated verification system to verify work authorization, a tentative nonconfirmation, a case in continuance (indicating the need for additional time for the government to resolve a case), or the finding of a photo non-match, does not establish, and should not be interpreted as evidence, that the employee is not work authorized. In any of the cases listed above, the employee must be provided a full and fair opportunity to contest the finding, and if he or she does so, the employee may not be terminated or suffer any adverse employment consequences based upon the employee's perceived employment eligibility status (including denying, reducing, or extending work hours, delaying or preventing training, requiring an employee to work in poorer conditions, refusing to assign the employee to a Federal contract or other assignment, or otherwise subjecting an employee to any assumption that he or she is unauthorized to work) until and unless secondary verification by SSA or DHS has been completed and a final nonconfirmation has been issued. If the employee does not choose to contest a tentative nonconfirmation or a photo non-match or if a secondary verification is completed and a final nonconfirmation is issued, then the Employer can find the employee is not work authorized and terminate the employee's employment. Employers or employees with questions about a final nonconfirmation may call E-Verify at 1-888-464-4218 or OSC at 1-800-255-8155 or 1-800-237-2515 (TDD).

11. The Employer agrees to comply with Title VII of the Civil Rights Act of 1964 and section 274B of the INA, as applicable, by not discriminating unlawfully against any individual in hiring, firing, or recruitment or referral practices because of his or her national origin or, in the case of a protected individual as defined in section 274B(a)(3) of the INA, because of his or her citizenship status. The Employer understands that such illegal practices can include selective verification or use of E-Verify except as provided in part D below, or discharging or refusing to hire employees because they appear or sound "foreign" or have received tentative nonconfirmations. The Employer further understands that any violation of the unfair immigration-related employment practices provisions in section 274B of the INA could subject the Employer to civil penalties, back pay awards, and other sanctions, and violations of Title VII could subject the Employer to back pay awards, compensatory and punitive damages. Violations of either section 274B of the INA or Title VII may also lead to the termination of its participation in E-

Company ID Number: 513478

Verify. If the Employer has any questions relating to the anti-discrimination provision, it should contact OSC at 1-800-255-8155 or 1-800-237-2515 (TDD).

12. The Employer agrees to record the case verification number on the employee's Form I-9 or to print the screen containing the case verification number and attach it to the employee's Form I-9.

13. The Employer agrees that it will use the information it receives from SSA or DHS pursuant to E-Verify and this MOU only to confirm the employment eligibility of employees as authorized by this MOU. The Employer agrees that it will safeguard this information, and means of access to it (such as PINS and passwords) to ensure that it is not used for any other purpose and as necessary to protect its confidentiality, including ensuring that it is not disseminated to any person other than employees of the Employer who are authorized to perform the Employer's responsibilities under this MOU, except for such dissemination as may be authorized in advance by SSA or DHS for legitimate purposes.

14. The Employer acknowledges that the information which it receives from SSA is governed by the Privacy Act (5 U.S.C. § 552a(i)(1) and (3)) and the Social Security Act (42 U.S.C. 1306(a)), and that any person who obtains this information under false pretenses or uses it for any purpose other than as provided for in this MOU may be subject to criminal penalties.

15. The Employer agrees to cooperate with DHS and SSA in their compliance monitoring and evaluation of E-Verify, including by permitting DHS and SSA, upon reasonable notice, to review Forms I-9 and other employment records and to interview it and its employees regarding the Employer's use of E-Verify, and to respond in a timely and accurate manner to DHS requests for information relating to their participation in E-Verify.

D. RESPONSIBILITIES OF FEDERAL CONTRACTORS WITH THE FAR E-VERIFY CLAUSE

1. The Employer understands that if it is a subject to the employment verification terms in Subpart 22.18 of the FAR, it must verify the employment eligibility of any existing employee assigned to the contract and all new hires, as discussed in the Supplemental Guide for Federal Contractors. Once an employee has been verified through E-Verify by the Employer, the Employer may not reverify the employee through E-Verify.

a. Federal contractors with the FAR E-Verify clause agree to become familiar with and comply with the most recent versions of the E-Verify User Manual for Federal Contractors and the E-Verify Supplemental Guide for Federal Contractors.

b. Federal contractors with the FAR E-Verify clause agree to complete a tutorial for Federal contractors with the FAR E-Verify clause.

c. Federal contractors with the FAR E-Verify clause not enrolled at the time of contract award: An Employer that is not enrolled in E-Verify at the time of a contract award must enroll as a Federal contractor with the FAR E-Verify clause in E-Verify within 30 calendar days of contract award and, within 90 days of enrollment, begin to use E-Verify to initiate verification of employment eligibility of new hires of the Employer who are working in the United States,

Company ID Number: 513478

whether or not assigned to the contract. Once the Employer begins verifying new hires, such verification of new hires must be initiated within 3 business days after the date of hire. Once enrolled in E-Verify as a Federal contractor with the FAR E-Verify clause, the Employer must initiate verification of employees assigned to the contract within 90 calendar days from the time of enrollment in the system and after the date and selecting which employees will be verified in E-Verify or within 30 days of an employee's assignment to the contract, whichever date is later.

d. Employers that are already enrolled in E-Verify at the time of a contract award but are not enrolled in the system as a Federal contractor with the FAR E-Verify clause: Employers enrolled in E-Verify for 90 days or more at the time of a contract award must use E-Verify to initiate verification of employment eligibility for new hires of the Employer who are working in the United States, whether or not assigned to the contract, within 3 business days after the date of hire. Employers enrolled in E-Verify as other than a Federal contractor with the FAR E-Verify clause, must update E-Verify to indicate that they are a Federal contractor with the FAR E-Verify clause within 30 days after assignment to the contract. If the Employer is enrolled in E-Verify for 90 calendar days or less at the time of contract award, the Employer must, within 90 days of enrollment, begin to use E-Verify to initiate verification of new hires of the contractor who are working in the United States, whether or not assigned to the contract. Such verification of new hires must be initiated within 3 business days after the date of hire. An Employer enrolled as a Federal contractor with the FAR E-Verify clause in E-Verify must initiate verification of each employee assigned to the contract within 90 calendar days after date of contract award or within 30 days after assignment to the contract, whichever is later.

e. Institutions of higher education, State, local and tribal governments and sureties: Federal contractors with the FAR E-Verify clause that are institutions of higher education (as defined at 20 U.S.C. 1001(a)), State or local governments, governments of Federally recognized Indian tribes, or sureties performing under a takeover agreement entered into with a Federal agency pursuant to a performance bond may choose to only verify new and existing employees assigned to the Federal contract. Such Federal contractors with the FAR E-Verify clause may, however, elect to verify all new hires, and/or all existing employees hired after November 6, 1986. The provisions of Article II.D, paragraphs 1.a and 1.b of this MOU providing timeframes for initiating employment verification of employees assigned to a contract apply to such institutions of higher education, State, local and tribal governments, and sureties.

f. Verification of all employees: Upon enrollment, Employers who are Federal contractors with the FAR E-Verify clause may elect to verify employment eligibility of all existing employees working in the United States who were hired after November 6, 1986, instead of verifying only new employees and those existing employees assigned to a covered Federal contract. After enrollment, Employers must elect to do so only in the manner designated by DHS and initiate E-Verify verification of all existing employees within 180 days after the election.

g. Form I-9 procedures for existing employees of Federal contractors with the FAR E-Verify clause: Federal contractors with the FAR E-Verify clause may choose to complete new Forms I-9 for all existing employees other than those that are completely exempt from this process. Federal contractors with the FAR E-Verify clause may also update previously completed Forms I-9 to initiate E-Verify verification of existing employees who are not completely exempt as long as that Form I-9 is complete (including the SSN), complies with

Company ID Number: 513478

Article II.C.5, the employee's work authorization has not expired, and the Employer has reviewed the information reflected in the Form I-9 either in person or in communications with the employee to ensure that the employee's stated basis in section 1 of the Form I-9 for work authorization has not changed (including, but not limited to, a lawful permanent resident alien having become a naturalized U.S. citizen). If the Employer is unable to determine that the Form I-9 complies with Article II.C.5, if the employee's basis for work authorization as attested in section 1 has expired or changed, or if the Form I-9 contains no SSN or is otherwise incomplete, the Employer shall complete a new I-9 consistent with Article II.C.5, or update the previous I-9 to provide the necessary information. If section 1 of the Form I-9 is otherwise valid and up-to-date and the form otherwise complies with Article II.C.5, but reflects documentation (such as a U.S. passport or Form I-551) that expired subsequent to completion of the Form I-9, the Employer shall not require the production of additional documentation, or use the photo screening tool described in Article II.C.5, subject to any additional or superseding instructions that may be provided on this subject in the Supplemental Guide for Federal Contractors. Nothing in this section shall be construed to require a second verification using E-Verify of any assigned employee who has previously been verified as a newly hired employee under this MOU, or to authorize verification of any existing employee by any Employer that is not a Federal contractor with the FAR E-Verify clause.

2. The Employer understands that if it is a Federal contractor with the FAR E-Verify clause, its compliance with this MOU is a performance requirement under the terms of the Federal contract or subcontract, and the Employer consents to the release of information relating to compliance with its verification responsibilities under this MOU to contracting officers or other officials authorized to review the Employer's compliance with Federal contracting requirements.

ARTICLE III

REFERRAL OF INDIVIDUALS TO SSA AND DHS

A. REFERRAL TO SSA

1. If the Employer receives a tentative nonconfirmation issued by SSA, the Employer must print the notice as directed by the E-Verify system and provide it to the employee so that the employee may determine whether he or she will contest the tentative nonconfirmation. The Employer must review the tentative nonconfirmation with the employee in private.

2. The Employer will refer employees to SSA field offices only as directed by the automated system based on a tentative nonconfirmation, and only after the Employer records the case verification number, reviews the input to detect any transaction errors, and determines that the employee contests the tentative nonconfirmation. The Employer will transmit the Social Security Number to SSA for verification again if this review indicates a need to do so. The Employer will determine whether the employee contests the tentative nonconfirmation as soon as possible after the Employer receives it.

3. If the employee contests an SSA tentative nonconfirmation, the Employer will provide the employee with a system-generated referral letter and instruct the employee to visit an SSA office within 8 Federal Government work days. SSA will electronically transmit the result of the referral to the Employer within 10 Federal Government work days of the referral unless it

Company ID Number: 513478

determines that more than 10 days is necessary. The Employer agrees to check the E-Verify system regularly for case updates.

4. The Employer agrees not to ask the employee to obtain a printout from the Social Security Number database (the Numident) or other written verification of the Social Security Number from the SSA.

B. REFERRAL TO DHS

1. If the Employer receives a tentative nonconfirmation issued by DHS, the Employer must print the tentative nonconfirmation notice as directed by the E-Verify system and provide it to the employee so that the employee may determine whether he or she will contest the tentative nonconfirmation. The Employer must review the tentative nonconfirmation with the employee in private.

2. If the Employer finds a photo non-match for an employee who provides a document for which the automated system has transmitted a photo, the employer must print the photo non-match tentative nonconfirmation notice as directed by the automated system and provide it to the employee so that the employee may determine whether he or she will contest the finding. The Employer must review the tentative nonconfirmation with the employee in private.

3. The Employer agrees to refer individuals to DHS only when the employee chooses to contest a tentative nonconfirmation received from DHS automated verification process or when the Employer issues a tentative nonconfirmation based upon a photo non-match. The Employer will determine whether the employee contests the tentative nonconfirmation as soon as possible after the Employer receives it.

4. If the employee contests a tentative nonconfirmation issued by DHS, the Employer will provide the employee with a referral letter and instruct the employee to contact DHS through its toll-free hotline (as found on the referral letter) within 8 Federal Government work days.

5. If the employee contests a tentative nonconfirmation based upon a photo non-match, the Employer will provide the employee with a referral letter to DHS. DHS will electronically transmit the result of the referral to the Employer within 10 Federal Government work days of the referral unless it determines that more than 10 days is necessary. The Employer agrees to check the E-Verify system regularly for case updates.

6. The Employer agrees that if an employee contests a tentative nonconfirmation based upon a photo non-match, the Employer will send a copy of the employee's Form I-551 or Form I-766 to DHS for review by:

- Scanning and uploading the document, or
- Sending a photocopy of the document by an express mail account (paid for at employer expense).

7. If the Employer determines that there is a photo non-match when comparing the photocopied List B document described in Article II.C.5 with the image generated in E-Verify, the Employer must forward the employee's documentation to DHS using one of the means described in the preceding paragraph, and allow DHS to resolve the case.

Company ID Number: 513478

ARTICLE IV

SERVICE PROVISIONS

SSA and DHS will not charge the Employer for verification services performed under this MOU. The Employer is responsible for providing equipment needed to make inquiries. To access E-Verify, an Employer will need a personal computer with Internet access.

ARTICLE V

PARTIES

A. This MOU is effective upon the signature of all parties, and shall continue in effect for as long as the SSA and DHS conduct the E-Verify program unless modified in writing by the mutual consent of all parties, or terminated by any party upon 30 days prior written notice to the others. Any and all system enhancements to the E-Verify program by DHS or SSA, including but not limited to the E-Verify checking against additional data sources and instituting new verification procedures, will be covered under this MOU and will not cause the need for a supplemental MOU that outlines these changes. DHS agrees to train employers on all changes made to E-Verify through the use of mandatory refresher tutorials and updates to the E-Verify User Manual, the E-Verify User Manual for Federal Contractors or the E-Verify Supplemental Guide for Federal Contractors. Even without changes to E-Verify, DHS reserves the right to require employers to take mandatory refresher tutorials. An Employer that is a Federal contractor with the FAR E-Verify clause may terminate this MOU when the Federal contract that requires its participation in E-Verify is terminated or completed. In such a circumstance, the Federal contractor with the FAR E-Verify clause must provide written notice to DHS. If an Employer that is a Federal contractor with the FAR E-Verify clause fails to provide such notice, that Employer will remain a participant in the E-Verify program, will remain bound by the terms of this MOU that apply to participants that are not Federal contractors with the FAR E-Verify clause, and will be required to use the E-Verify procedures to verify the employment eligibility of all newly hired employees.

B. Notwithstanding Article V, part A of this MOU, DHS may terminate this MOU if deemed necessary because of the requirements of law or policy, or upon a determination by SSA or DHS that there has been a breach of system integrity or security by the Employer, or a failure on the part of the Employer to comply with established procedures or legal requirements. The Employer understands that if it is a Federal contractor with the FAR E-Verify clause, termination of this MOU by any party for any reason may negatively affect its performance of its contractual responsibilities.

C. Some or all SSA and DHS responsibilities under this MOU may be performed by contractor(s), and SSA and DHS may adjust verification responsibilities between each other as they may determine necessary. By separate agreement with DHS, SSA has agreed to perform its responsibilities as described in this MOU.

Company ID Number: 513478

D. Nothing in this MOU is intended, or should be construed, to create any right or benefit, substantive or procedural, enforceable at law by any third party against the United States, its agencies, officers, or employees, or against the Employer, its agents, officers, or employees.

E. Each party shall be solely responsible for defending any claim or action against it arising out of or related to E-Verify or this MOU, whether civil or criminal, and for any liability wherefrom, including (but not limited to) any dispute between the Employer and any other person or entity regarding the applicability of Section 403(d) of IIRIRA to any action taken or allegedly taken by the Employer.

F. The Employer understands that the fact of its participation in E-Verify is not confidential information and may be disclosed as authorized or required by law and DHS or SSA policy, including but not limited to, Congressional oversight, E-Verify publicity and media inquiries, determinations of compliance with Federal contractual requirements, and responses to inquiries under the Freedom of Information Act (FOIA).

G. The foregoing constitutes the full agreement on this subject between DHS and the Employer.

H. The individuals whose signatures appear below represent that they are authorized to enter into this MOU on behalf of the Employer and DHS respectively.

Company ID Number: 513478

To be accepted as a participant in E-Verify, you should only sign the Employer's Section of the signature page. If you have any questions, contact E-Verify at 888-464-4218.

Employer Warrior Tractor & Equipment Co., Inc.	
Stanley McCracken	
Name (Please Type or Print)	Title
Electronically Signed	03/01/2012
Signature	Date
Department of Homeland Security – Verification Division	
USCIS Verification Division	
Name (Please Type or Print)	Title
Electronically Signed	03/01/2012
Signature	Date

Information Required for the E-Verify Program	
Information relating to your Company:	
Company Name:	Warrior Tractor & Equipment Co., Inc.
Company Facility Address:	6801 McFarland Blvd
	Northport, AL 35476
Company Alternate Address:	P O Box 412
	Northport, AL 35476
County or Parish:	TUSCALOOSA
Employer Identification Number:	630588737

Company ID Number: 513478

North American Industry Classification Systems Code:	423
Administrator:	Warrior Tractor and Equipment Co., Inc.
Number of Employees:	100 to 499
Number of Sites Verified for:	1
Are you verifying for more than 1 site? If yes, please provide the number of sites verified for in each State:	
<ul style="list-style-type: none">ALABAMA 1 site(s)	

Information relating to the Program Administrator(s) for your Company on policy questions or operational problems:

Name:	Stanley N McCracken	Fax Number:	(205) 333 - 0101
Telephone Number:	(205) 339 - 0300		
E-mail Address:	wte024@warriortractor.com		

G-SERIES
EXCAVATORS



JOHN DEERE

250G LC / 300G LC

DEERE

SIZABLE
SOLUTIONS







+



RELIABLE

PRODUCTIVE

*GET MORE,
DO MORE.*



ACCELERATE YOUR PROFITABILITY.

With powerful digging forces, swing torques, and lift capacities making the most of every gallon of fuel, our 250G LC and 300G LC Excavators will help fast-track your bottom line. Improvements inspired by customer input include Powerwise Plus™ technology to boost performance as needed, standard pattern-control switch to simplify operation, upgraded cab comforts, and additional track guards to reduce chain snaking. Plus optional new debris-deflecting track-frame undercover, hydraulic single-pedal propel system, and deluxe LED lighting. These midsize excavators were redesigned with the uptime and productivity of your operation in mind.

NATURAL RESOURCE

THAT'S THE REAL BEAUTY OF IT.

We've updated our 250G and 300G LC Excavators with our greatest asset in mind — customers like you. Read about the many singular features your real-world ideas have inspired.

Keep it clean

Optional adjustable rotary precleaner pulls clean air into the system — a must in harsh jobsite conditions.

Control pattern

Pattern-control switch is now a standard feature instead of a field-kit option.

Waste not

Auto-idle speed can be lowered to a more fuel-efficient 800 rpm.

Performance plus

New Powerwise Plus technology delivers fuel-efficient power when you need it.

Going forward

Hydraulic single-pedal propel system enables straight-line machine tracking without articulating both hand and foot pedals.



**SET AUTO-
IDLE TO
800 RPM
TO CONSERVE FUEL**





STANDOUT FEATURE

POWERWISE PLUS™
TECHNOLOGY.

GOT A LOT ON YOUR PLATE?

DIG IN.

When you need to serve up more productivity, the 250G LC and 300G LC have insatiable appetites for work. Our new Powerwise Plus hydraulic-management technology yields powerful performance when you need it, without burning additional fuel. Even with their extra ability, these excavators don't compromise the smooth control and multifunction capability that have become the trademarks of the John Deere G-Series. If you're still hungry for more productivity, add any of the many available options and wipe even more tasks off your plate.



PRESS POWER BOOST FOR
MORE MUSCLE

Reliable precision

For work that requires extra finesse, the G-Series' short-throw low-effort controls, unmatched metering, and smooth multifunction operation give the precision you need.

Cycle times

Generous flow, arm force, and swing torque help speed cycles. So you can do your best to stay on schedule or ahead of the weather.

Intuitive technology

John Deere Powerwise Plus technology delivers on-demand power when you need it. Precise pump flow when the pilot controls are metered provides reliable, fuel-efficient performance.

Need a boost?

When the digging gets tough, simply press the power-boost button on the right-hand control and muscle through.

Data center

Machine Information Center (MIC) captures and stores vital machine performance and utilization data to help improve productivity, uptime, and profits.



TURN UP THE COMFORT *OPERATING EASE TAKES A TURN FOR THE BETTER.*

Refined LCD monitor employs a rotary control that makes it quick and easy to tap into an abundance of performance and convenience functions and features. New single-pedal propel keeps the machine moving straight forward. Operators will also appreciate the comfortable fabric-covered high-back seat and generous legroom in the spacious, well-appointed cab. As always, virtually unobstructed all-around visibility, low-effort joysticks, a highly efficient HVAC system, and numerous other amenities provide what your operators need to do their best work.



HYDRAULIC
SINGLE-PEDAL
PROPEL SYSTEM

We've got your back

Sculpted mechanical-suspension high-back seat with 12.5 in. of travel slides together or independent of the joystick console.

Pedal propel

New hydraulic single-pedal propel system moves the machine when and where you need it to without having to articulate both the hand and foot pedals.

Stow your stuff

No shortage of storage in here. There's a place for a cooler, cup holders, and even a hot/cold box that keeps beverages at just the right temperature.

Put some light on it

Optional deluxe LED lights at cab front and rear, boom, and toolbox illuminate when your workday extends beyond daylight. Engine-compartment light makes it easy to see daily service points in low-light conditions.

Calm, cool, and collected

Automatic, high-velocity bi-level climate-control system with automotive-style adjustable louvers helps keep the glass clear and the cab comfortable.

Dial it up

Multi-language LCD monitor and rotary dial provide intuitive access to a wealth of information and functions. Just turn and tap to select work mode, access operating info, check maintenance intervals, source diagnostic codes, adjust cab temperature, and tune the radio. A new USB port helps keep you digitally connected.

It's easy to see

Wide expanse of front and side glass, narrow front cab posts, large overhead glass, and numerous mirrors provide virtually unobstructed all-around visibility. If you need to see more, choose the optional rearview camera that displays the action behind on the monitor.

Take control

Ergonomically correct short-throw pilot levers provide smooth, precise fingertip control with less movement or effort. Push buttons in the right lever allow predictable control of auxiliary hydraulic flow for operating attachments. Optional sliding switch provides proportional speed control, giving you full command at your fingertips.

RUGGED AND RELIABLE

NOTHING IS BUILT LIKE THESE DEERE.

Jobsite conditions are tough in the real world. So we equipped the 250G LC and 300G LC to be equally tough. Industry-exclusive double-seal swing bearing delivers rock-solid durability. Thickened mainframe single-sheet undercover and two additional track guards provide added strength. New options like a track-frame undercover that keeps debris from accumulating and an adjustable rotary precleaner that pulls clean air into the system no matter what it's like outside. When you know how they're built, you'll run these Deere.

Pattern of protection

Standard pattern-control switch and fuel shutoff are well protected yet conveniently accessible at ground level.

Get good grades

Optional grade-reference system includes sensor mounts to help speed installation, eliminating the need to grind, weld, and repaint. Our "open-architecture" design allows you to employ your favorite brand of grade-control system to help maximize productivity and uptime while lowering daily operating costs.

Keeping track

Two new track guards help keep the chain from snaking and stabilize the machine when side loading.

Designed for durability

Reinforced D-channel side frames with recessed doors provide maximum cab and component protection. Standard mainframe and optional track-frame undercovers provide an extra layer of defense.

Wear coating

Tungsten-carbide coating creates an extremely wear-resistant surface to protect the all-important bucket-to-arm joint.

Stress resistance

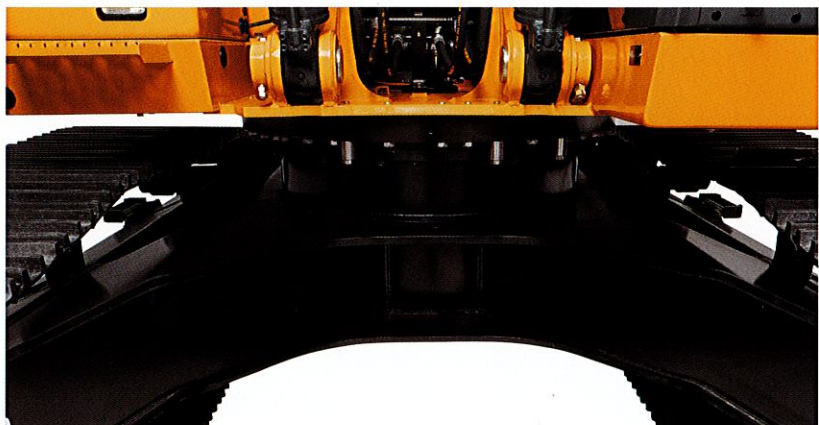
A John Deere exclusive, three welded bulkheads within the boom resist torsional stress. Booms, arms, and mainframes are so tough, they're warranted for three years or 10,000 hours.

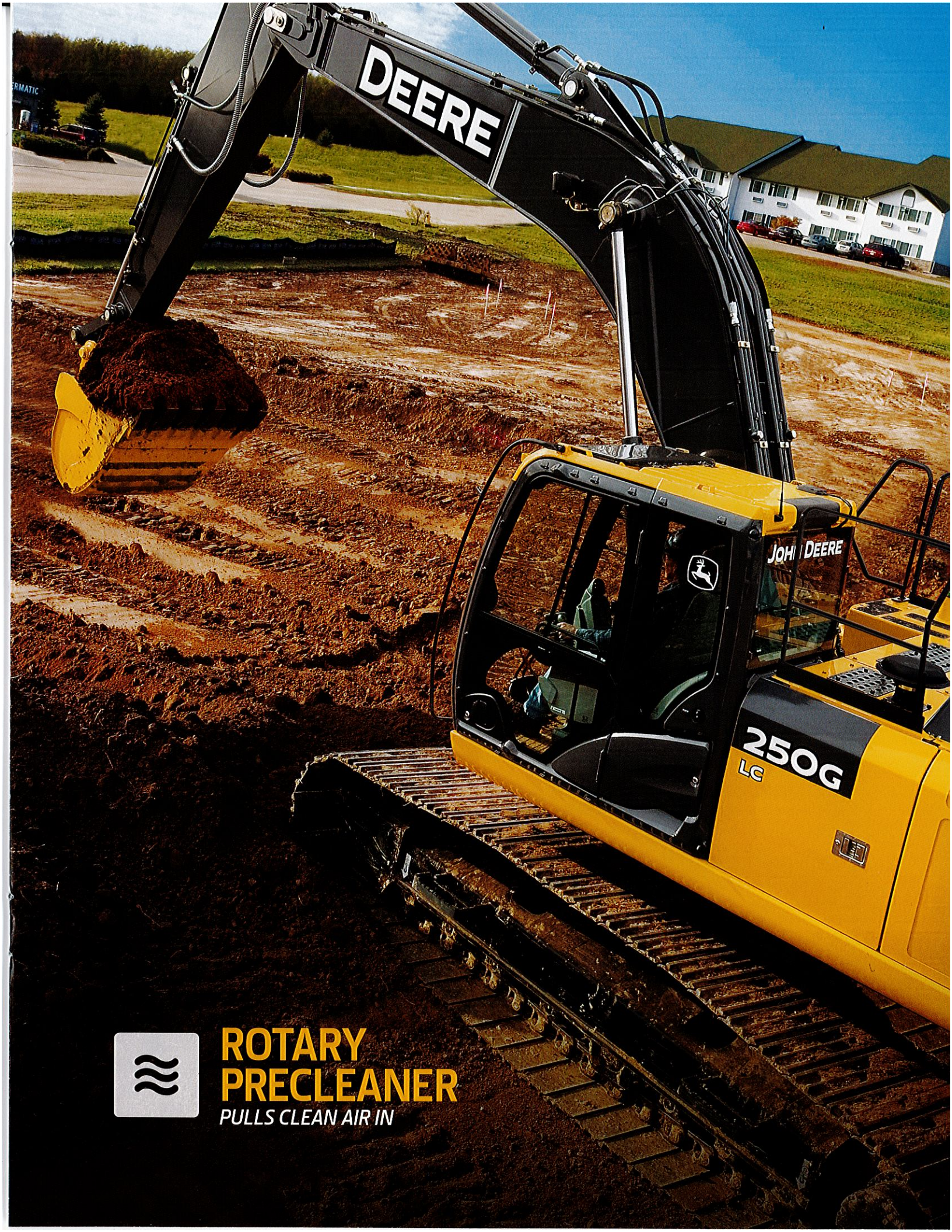
Cooler core cleanout

Optional hydraulic reversing fan feature allows the operator to automatically back-blow the cooling cores to improve uptime.

FT4 engine technology

To meet stringent FT4/Stage IV standards, we built on our Interim Tier 4 (IT4)/Stage IIIB solution to deliver the best combination of performance, efficiency, and reliability without sacrificing power or torque. Our field-proven technology is simple, fluid efficient, fully integrated, and fully supported. It employs field-proven cooled exhaust gas recirculation (EGR), easy-to-maintain high-uptime exhaust filters, and selective catalytic reduction (SCR).





DEERE

JOHN DEERE

250G
LC



**ROTARY
PRECLEANER**
PULLS CLEAN AIR IN

LOW MAINTENANCE

YOU'LL BECOME A BIG FAN.

Find it fast

Easily accessible fluid-sample ports and in-cab diagnostic displays help speed preventative maintenance.

Keep it clean

Cool-on-demand hydraulic-driven fan provides optimum cooling while reducing noise and conserving fuel. Optional reversing fan back-blows cooler cores to reduce debris buildup.

Easy filter maintenance

Vertical spin-on fuel and engine oil filters are positioned in the right rear compartment for simplified servicing at ground level.

Take it to the bank

Centralized lube banks place difficult-to-lube zerks within easy reach. They make greasing less messy and time consuming, too.

DEF access

Diesel exhaust fluid (DEF) can be conveniently filled when refueling due to its large and accessible tank. DEF overflow routes excess outside the machine to avoid paint damage.

Refill 'er up

Large fuel tanks and 500- and 5,000-hour engine and hydraulic oil-service intervals decrease downtime for routine maintenance. Fluid-level sight gauges are conveniently located and can be checked at a glance.

Fuel savers

Auto-idle automatically reduces engine speed — now to as low as 800 rpm — when hydraulics aren't in use. Auto-shutdown further preserves precious fuel.

FT4 ash service

Ash-service intervals for the diesel particulate filter (DPF) are condition based, with the machine notifying the operator before service is required. Typically, ash service is not necessary until the first engine overhaul depending on machine application and maintenance practices. FT4/Stage IV components are warranted for 10,000 hours.



Get valuable insight with
JOHN DEERE WORKSIGHT™

John Deere WorkSight is an exclusive suite of telematics solutions that increases uptime while lowering operating costs. At its heart, JDLink™ machine monitoring provides real-time utilization data and alerts to help you maximize productivity and efficiency while minimizing downtime. Remote diagnostics enable your dealer to read codes and record performance data without a trip to the jobsite.

Reduce operating costs with
JOHN DEERE ULTIMATE UPTIME

John Deere Ultimate Uptime, featuring John Deere WorkSight™, is a customizable support solution available exclusively from your Deere dealer. This flexible offering maximizes equipment availability with standard John Deere WorkSight capabilities that can help prevent future downtime and speed repairs when needed. In addition to the base John Deere WorkSight features, our dealers work with you to build an uptime package that meets the specific needs of your machine, fleet, project, and business, including customized maintenance and repair agreements, onsite parts availability, extended warranties, fluid sampling, response-time guarantees, and more.





250G LC SPECIFICATIONS

Engine		250G LC	
		Base engine for use in U.S., U.S. Territories, and Canada	Optional engine for use outside the U.S. and U.S. Territories
Manufacturer and Model	John Deere PowerTech™ PVS 6.8 L	John Deere PowerTech™ Plus 6.8 L	John Deere PowerTech™ Plus 6.8 L
Non-Road Emission Standard	EPA Final Tier 4/EU Stage IV	EPA Tier 3/EU Stage IIIA	EPA Tier 3/EU Stage IIIA
Net Rated Power (ISO 9249)	140 kW (188 hp) at 2,100 rpm	132 kW (177 hp) at 2,000 rpm	132 kW (177 hp) at 2,000 rpm
Cylinders	6	6	6
Displacement	6.8 L (415 cu. in.)	6.8 L (415 cu. in.)	6.8 L (415 cu. in.)
Off-Level Capacity	70% (35 deg.)	70% (35 deg.)	70% (35 deg.)
Aspiration	Turbocharged, air-to-air charge-air cooler	Turbocharged, air-to-air charge-air cooler	Turbocharged, air-to-air charge-air cooler
Cooling			
Cool-on-demand hydraulic-driven, suction-type fan with remote-mounted drive			
Powertrain			
2-speed propel with automatic shift			
Maximum Travel Speed			
Low	3.3 km/h (2.1 mph)		
High	5.5 km/h (3.4 mph)		
Drawbar Pull	21 900 kg (48,300 lb.)		
Hydraulics			
Open center, load sensing			
Main Pumps			
2 variable-displacement pumps			
Maximum Rated Flow	224 L/m (59.2 gpm) x 2		
System Operating Pressure			
Circuits			
Implement	34 300 kPa (4,975 psi)		
Travel	35 000 kPa (5,076 psi)		
Swing	32 400 kPa (4,830 psi)		
Power Boost	38 000 kPa (5,511 psi)		
Controls			
Pilot levers, short stroke, low-effort hydraulic pilot controls with shutoff lever			
Cylinders			
	<i>Bore</i>	<i>Rod Diameter</i>	<i>Stroke</i>
Boom (2)	125 mm (4.9 in.)	90 mm (3.5 in.)	1390 mm (54.7 in.)
Arm (1)	140 mm (5.5 in.)	100 mm (3.9 in.)	1610 mm (63.4 in.)
Bucket (1)	130 mm (5.1 in.)	90 mm (3.5 in.)	1075 mm (42.3 in.)
Electrical			
Number of Batteries (12 volt)	2		
Battery Capacity	1,400 CCA		
Alternator Rating	100 amp		
Work Lights	2 halogen (1 mounted on boom, 1 on frame)		
Undercarriage			
Rollers (each side)			
Carrier	2		
Track	9		
Shoes, Triple Semi-Grousers (each side)	51		
Track			
Adjustment	Hydraulic		
Guides	3 per side		
Chain	Sealed and lubricated		
Ground Pressure			
Triple Semi-Grouser Shoes			
600 mm (24 in.)	50.8 kPa (7.36 psi)		
700 mm (28 in.)	44.6 kPa (6.47 psi)		
800 mm (32 in.)	39.1 kPa (5.66 psi)		

250G LC SPECIFICATIONS



Swing Mechanism 250G LC

Swing	
Speed	13.5 rpm
Torque	77 500 Nm (57,150 lb.-ft.)

Serviceability

Refill Capacities	
Fuel Tank	500 L (132 gal.)
Diesel Exhaust Fluid (DEF) Tank	35 L (9.3 gal.)
Cooling System	23 L (6 gal.)
Engine Oil with Filter	19.5 L (5.2 gal.)
Hydraulic Tank	1476 L (39 gal.)
Hydraulic System	240 L (63 gal.)
Swing Drive	7 L (7.5 qt.)
Gearbox	
Propel (each)	6.2 L (6.5 qt.)
Pump Drive	1.1 L (1.2 qt.)

Operating Weights

With full fuel tank; 79-kg (175 lb.) operator; 1.06-m³ (1.38 cu. yd.), 1219-mm (48 in.), 1107-kg (2,440 lb.) bucket; 3.61-m (11 ft. 10 in.) arm; 5112-kg (11,270 lb.) counterweight; and 800-mm (32 in.) triple semi-grouser shoes

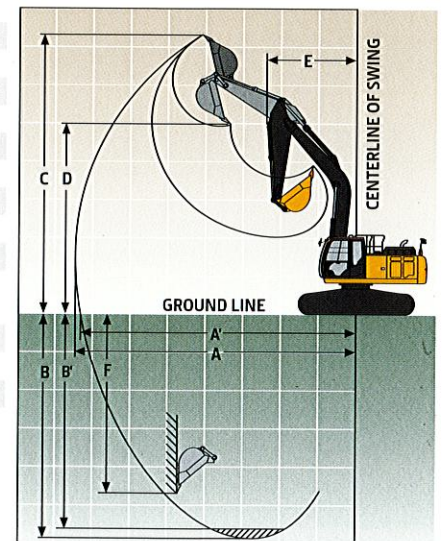
Operating Weight	25 463 kg (56,100 lb.)
------------------	------------------------

Component Weights

Undercarriage with Triple Semi-Grouser Shoes	
600 mm (24 in.)	8077 kg (17,807 lb.)
700 mm (28 in.)	8467 kg (18,667 lb.)
800 mm (32 in.)	8752 kg (19,294 lb.)
1-Piece Boom (with arm cylinder)	2210 kg (4,872 lb.)
Arm with Bucket Cylinder and Linkage	
2.50 m (8 ft. 2 in.)	1225 kg (2,701 lb.)
2.96 m (9 ft. 9 in.)	1296 kg (2,858 lb.)
3.61 m (11 ft. 10 in.)	1396 kg (3,078 lb.)
Boom-Lift Cylinders (2), Total Weight	434 kg (958 lb.)
Counterweight, Standard	5112 kg (11,270 lb.)

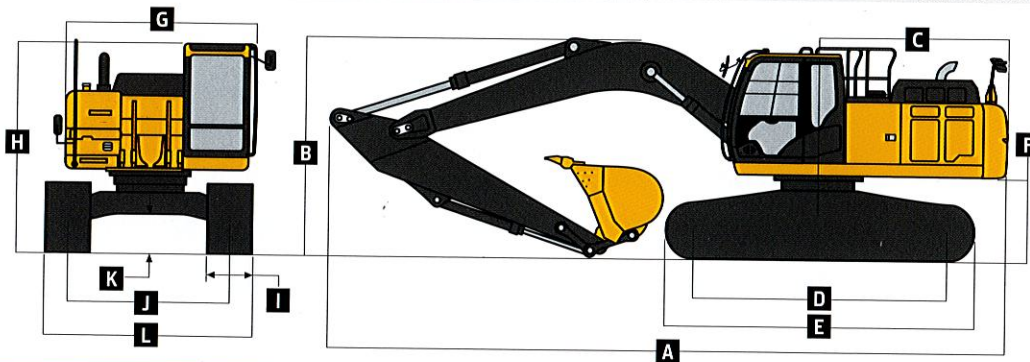
Operating Dimensions

Arm Length	2.50 m (8 ft. 2 in.)	2.96 m (9 ft. 9 in.)	3.61 m (11 ft. 10 in.)
Arm Digging Force			
SAE	154.0 kN (34,621 lb.)	129.1 kN (29,023 lb.)	112.2 kN (25,224 lb.)
ISO	158.0 kN (35,520 lb.)	131.0 kN (29,450 lb.)	114.0 kN (25,628 lb.)
Bucket Digging Force			
SAE	164.0 kN (36,869 lb.)	164.0 kN (36,869 lb.)	164.0 kN (36,869 lb.)
ISO	189.0 kN (42,489 lb.)	189.0 kN (42,489 lb.)	189.0 kN (42,489 lb.)
A Maximum Reach	9.88 m (32 ft. 5 in.)	10.29 m (33 ft. 9 in.)	10.91 m (35 ft. 10 in.)
A' Maximum Reach at Ground Level	9.69 m (31 ft. 9 in.)	10.11 m (33 ft. 2 in.)	10.75 m (35 ft. 3 in.)
B Maximum Digging Depth	6.50 m (21 ft. 4 in.)	6.96 m (22 ft. 10 in.)	7.61 m (25 ft. 0 in.)
B' Maximum Digging Depth at 2.44-m (8 ft. 0 in.) Flat Bottom	6.26 m (20 ft. 6 in.)	6.75 m (22 ft. 2 in.)	7.44 m (24 ft. 5 in.)
C Maximum Cutting Height	9.95 m (32 ft. 8 in.)	10.16 m (33 ft. 4 in.)	10.56 m (34 ft. 8 in.)
D Maximum Dumping Height	6.99 m (22 ft. 11 in.)	7.20 m (23 ft. 7 in.)	7.58 m (24 ft. 10 in.)
E Minimum Swing Radius	3.48 m (11 ft. 5 in.)	3.44 m (11 ft. 3 in.)	3.43 m (11 ft. 3 in.)
F Maximum Vertical Wall	5.58 m (18 ft. 4 in.)	6.03 m (19 ft. 9 in.)	6.74 m (22 ft. 1 in.)



250G LC

Machine Dimensions	250G LC		
Arm Length	2.50 m (8 ft. 2 in.)	2.96 m (9 ft. 9 in.)	3.61 m (11 ft. 10 in.)
A Overall Length	10.47 m (34 ft. 4 in.)	10.35 m (33 ft. 11 in.)	10.41 m (34 ft. 2 in.)
B Overall Height	3.37 m (11 ft. 1 in.)	3.07 m (10 ft. 1 in.)	3.14 m (10 ft. 4 in.)
C Tail-Swing Radius	3.14 m (10 ft. 4 in.)	3.14 m (10 ft. 4 in.)	3.14 m (10 ft. 4 in.)
D Distance Between Idler/Sprocket Centerline	3.84 m (12 ft. 7 in.)	3.84 m (12 ft. 7 in.)	3.84 m (12 ft. 7 in.)
E Undercarriage Length	4.64 m (15 ft. 3 in.)	4.64 m (15 ft. 3 in.)	4.64 m (15 ft. 3 in.)
F Counterweight Clearance	1.09 m (3 ft. 7 in.)	1.09 m (3 ft. 7 in.)	1.09 m (3 ft. 7 in.)
G Upperstructure Width	2.89 m (9 ft. 6 in.)	2.89 m (9 ft. 6 in.)	2.89 m (9 ft. 6 in.)
H Cab Height	3.01 m (9 ft. 11 in.)	3.01 m (9 ft. 11 in.)	3.01 m (9 ft. 11 in.)
I Track Width with Triple Semi-Grouser Shoes	600 mm (24 in.) / 700 mm (28 in.) / 800 mm (32 in.)	600 mm (24 in.) / 700 mm (28 in.) / 800 mm (32 in.)	600 mm (24 in.) / 700 mm (28 in.) / 800 mm (32 in.)
J Gauge Width	2.59 m (8 ft. 6 in.)	2.59 m (8 ft. 6 in.)	2.59 m (8 ft. 6 in.)
K Ground Clearance	0.46 m (18 in.)	0.46 m (18 in.)	0.46 m (18 in.)
L Overall Width with Triple Semi-Grouser Shoes			
600 mm (24 in.)	3.19 m (10 ft. 6 in.)	3.19 m (10 ft. 6 in.)	3.19 m (10 ft. 6 in.)
700 mm (28 in.)	3.29 m (10 ft. 9 in.)	3.29 m (10 ft. 9 in.)	3.29 m (10 ft. 9 in.)
800 mm (32 in.)	3.39 m (11 ft. 1 in.)	3.39 m (11 ft. 1 in.)	3.39 m (11 ft. 1 in.)



Lift Capacities

Boldface type indicates hydraulically limited capacity; **lightface type** indicates stability-limited capacities, in kg (lb.). Ratings at bucket lift hook; machine equipped with 851-kg (1,876 lb.) bucket; standard gauge; and situated on firm, uniform supporting surface. Total load includes weight of cables, hook, etc. Figures do not exceed 87 percent of hydraulic capacities or 75 percent of weight needed to tip machine. All lift capacities are based on ISO 10567.

LOAD POINT HEIGHT	HORIZONTAL DISTANCE FROM CENTERLINE OF ROTATION											
	1.5 m (5 ft.)		3.0 m (10 ft.)		4.5 m (15 ft.)		6.0 m (20 ft.)		7.5 m (25 ft.)		9.0 m (30 ft.)	
	Over Front	Over Side	Over Front	Over Side	Over Front	Over Side	Over Front	Over Side	Over Front	Over Side	Over Front	Over Side
<i>With 2.96-m (9 ft. 9 in.) arm and 800-mm (32 in.) shoes</i>												
6.0 m (20 ft.)							5040 (11,040)	5040 (11,040)	4190	4190		
4.5 m (15 ft.)					6990 (15,020)	6990 (15,020)	5830 (12,640)	5830 (12,640)	5280 (11,550)	4230 (9,070)		
3.0 m (10 ft.)					9370 (20,110)	9360 (20,110)	6930 (14,990)	5910 (12,720)	5810 (12,630)	4070 (8,730)		
1.5 m (5 ft.)					11 410 (24,580)	8690 (18,720)	8010 (17,320)	5580 (12,010)	6220 (13,360)	3900 (8,370)		
Ground Line					12 370 (26,750)	8370 (17,990)	8730 (18,740)	5360 (11,520)	6080 (13,070)	3770 (8,110)		
-1.5 m (-5 ft.)			8640 (19,680)	8640 (19,680)	12 380 (26,810)	8290 (17,810)	8620 (18,510)	5260 (11,320)	6030 (12,960)	3720 (8,010)		
-3.0 m (-10 ft.)	10 140 (22,820)	10 140 (22,820)	14 820 (33,800)	14 820 (33,800)	11 560 (25,000)	8370 (18,000)	8460 (18,230)	5300 (11,400)				
-4.5 m (-15 ft.)			13 500 (28,980)	13 500 (28,980)	9590 (20,500)	8630 (18,570)						
<i>With 3.61-m (11 ft. 10 in.) arm and 700-mm (28 in.) shoes</i>												
6.0 m (20 ft.)							4290 (9,400)	4290 (9,400)	3990 (8,480)	3990 (8,480)		
4.5 m (15 ft.)							5120 (11,100)	5120 (11,100)	4740 (10,300)	4250 (9,120)		
3.0 m (10 ft.)					8210 (17,640)	8210 (17,640)	6280 (13,580)	5960 (12,820)	5340 (11,610)	4070 (8,730)	3710 (7,190)	2890 (6,170)
1.5 m (5 ft.)					10 530 (22,680)	8780 (18,910)	7480 (16,180)	5580 (12,020)	6000 (13,020)	3870 (8,310)	4350 (8,490)	2790 (5,980)
Ground Line			4660 (10,740)	4660 (10,740)	11 950 (25,830)	8310 (17,870)	8400 (18,180)	5300 (11,410)	6000 (12,660)	3710 (7,970)	4260 (7,770)	2720 (5,830)
-1.5 m (-5 ft.)	4520 (10,150)	4520 (10,150)	7870 (17,910)	7870 (17,910)	12 390 (26,820)	8130 (17,470)	8480 (17,890)	5150 (11,080)	5900 (12,450)	3620 (7,780)		
-3.0 m (-10 ft.)	8200 (18,440)	8200 (18,440)	12 340 (28,100)	12 340 (28,100)	11 980 (25,910)	8140 (17,490)	8450 (17,840)	5130 (11,040)	5900 (12,480)	3620 (7,810)		
-4.5 m (-15 ft.)	12 810 (28,980)	12 810 (28,980)	15 370 (33,080)	15 370 (33,080)	10 590 (22,760)	8320 (17,890)	7640 (16,280)	5250 (11,330)				
-6.0 m (-20 ft.)					7300	7300						

Lift Capacities (continued) 250G LC

Boldface type indicates hydraulically limited capacity; **lightface type** indicates stability-limited capacities, in kg (lb.). Ratings at bucket lift hook; machine equipped with 851-kg (1,876 lb.) bucket; standard gauge; and situated on firm, uniform supporting surface. Total load includes weight of cables, hook, etc. Figures do not exceed 87 percent of hydraulic capacities or 75 percent of weight needed to tip machine. All lift capacities are based on ISO 10567.

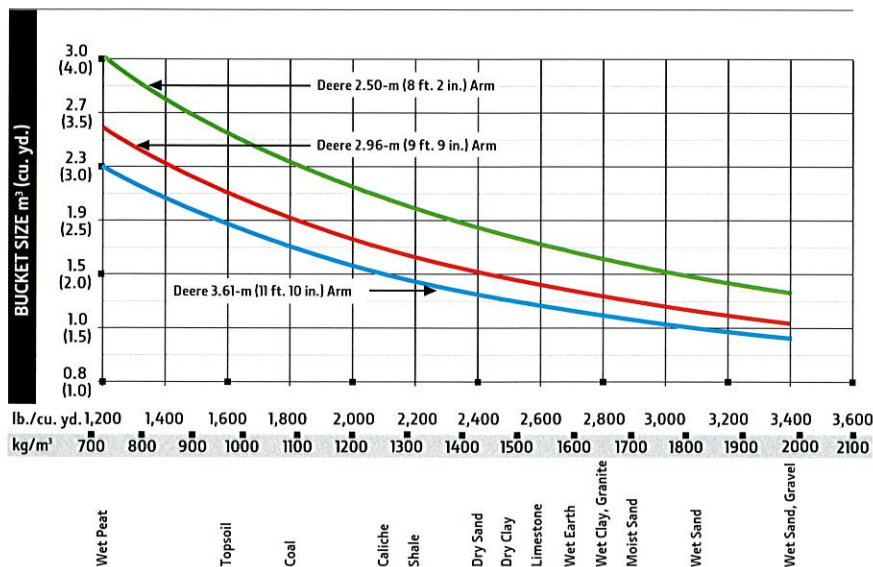
LOAD POINT HEIGHT	HORIZONTAL DISTANCE FROM CENTERLINE OF ROTATION												
	1.5 m (5 ft.)		3.0 m (10 ft.)		4.5 m (15 ft.)		6.0 m (20 ft.)		7.5 m (25 ft.)		9.0 m (30 ft.)		
	Over Front	Over Side	Over Front	Over Side	Over Front	Over Side	Over Front	Over Side	Over Front	Over Side	Over Front	Over Side	
<i>With 3.61-m (11 ft. 10 in.) arm and 800-mm (32 in.) shoes</i>													
6.0 m (20 ft.)							4290	4290	3990	3990			
							(9,400)	(9,400)	(8,480)	(8,480)			
4.5 m (15 ft.)							5120	5120	4740	4300			
							(11,100)	(11,100)	(10,300)	(9,230)			
3.0 m (10 ft.)					8210	8210	6280	6020	5340	4120	3710	2930	
				(28,820)	(28,820)	(17,640)	(17,640)	(13,580)	(12,960)	(11,610)	(8,840)	(7,190)	(6,250)
1.5 m (5 ft.)					10 530	8870	7480	5650	6000	3920	4350	2830	
					(22,680)	(19,110)	(16,180)	(12,150)	(13,020)	(8,420)	(8,490)	(6,060)	
Ground Line			4660	4660	11 950	8410	8400	5370	6070	3760	4260	2760	
			(10,740)	(10,740)	(25,830)	(18,080)	(18,180)	(11,540)	(13,050)	(8,070)	(7,770)	(5,910)	
-1.5 m (-5 ft.)	4520	4520	7870	7870	12 390	8220	8580	5220	5970	3670			
	(10,150)	(10,150)	(17,910)	(17,910)	(26,820)	(17,670)	(18,420)	(11,220)	(12,840)	(7,880)			
-3.0 m (-10 ft.)	8200	8200	12 340	12 340	11 980	8240	8550	5200	5980	3670			
	(18,440)	(18,440)	(28,100)	(28,100)	(25,910)	(17,700)	(18,370)	(11,810)	(12,870)	(7,910)			
-4.5 m (-15 ft.)	12 810	12 810	15 370	15 370	10 590	8410	7640	5320					
	(28,980)	(28,980)	(33,080)	(33,080)	(22,760)	(18,090)	(16,280)	(11,470)					
-6.0 m (-20 ft.)					7300	7300							

Buckets

A full line of buckets is offered to meet a wide variety of applications. Digging forces are with power boost. Buckets are equipped with John Deere TK-Series Bucket Teeth standard. Replaceable cutting edges and a variety of teeth are available through John Deere Parts. Optional side cutters add 150 mm (6 in.) to bucket widths. Capacities are SAE heaped ratings.

Type Bucket	Bucket Width		Bucket Capacity		Bucket Weight		Bucket Dig Force		Arm Dig Force, 2.50 m (8 ft. 2 in.)		Arm Dig Force, 2.96 m (9 ft. 9 in.)		Arm Dig Force, 3.61 m (11 ft. 10 in.)		Bucket Tip Radius		Number of Teeth
	mm	in.	m ³	cu. yd.	kg	lb.	kN	lb.	kN	lb.	kN	lb.	kN	lb.	mm	in.	
Heavy Duty	1065	42	1.06	1.4	997	2,197	176.0	39,558	154.0	34,621	129.1	29,021	112.2	25,220	1435	56.5	5
	1220	48	1.22	1.6	1071	2,361	176.0	39,558	154.0	34,621	129.1	29,021	112.2	25,220	1435	56.5	6
	1372	54	1.39	1.8	1138	2,509	176.0	39,558	154.0	34,621	129.1	29,021	112.2	25,220	1435	56.5	6
High Capacity	610	24	0.70	0.9	801	1,767	167.4	37,636	148.2	33,317	124.7	28,044	108.9	24,477	1588	62.5	3
	760	30	0.92	1.2	913	2,012	167.4	37,636	148.2	33,317	124.7	28,044	108.9	24,477	1588	62.5	4
	914	36	1.13	1.5	968	2,135	167.4	37,636	148.2	33,317	124.7	28,044	108.9	24,477	1588	62.5	4
	1065	42	1.34	1.7	1035	2,281	167.4	37,636	148.2	33,317	124.7	28,044	108.9	24,477	1588	62.5	5
	1220	48	1.55	2.0	1137	2,507	167.4	37,636	148.2	33,317	124.7	28,044	108.9	24,477	1588	62.5	6

Bucket Selection Guide*



*Contact your John Deere dealer for optimum bucket and attachment selections. These recommendations are for general conditions and average use. Does not include optional equipment such as thumbs or couplers. Larger buckets may be possible when using light materials, for flat and level operations, less compacted materials, and volume loading applications such as mass-excavation applications in ideal conditions. Smaller buckets are recommended for adverse conditions such as off-level applications, rocks, and uneven surfaces. Bucket capacity indicated is SAE heaped.



300G LC SPECIFICATIONS

Engine	300G LC		
	Base engine for use in U.S., U.S. Territories, and Canada		
Manufacturer and Model	John Deere PowerTech™ PSS 6.8L, 6068HT107		
Non-Road Emission Standard	EPA Final Tier 4/EU Stage IV		
Net Rated Power (ISO 9249)	166 kW (223 hp) at 1,900 rpm		
Cylinders	6		
Displacement	6.8 L (415 cu. in.)		
Off-Level Capacity	70% (35 deg.)		
Aspiration	Series turbocharged, air-to-air charge-air cooler		
Cooling			
	Cool-on-demand hydraulic-driven, suction-type fan with remote-mounted drive		
Powertrain			
	2-speed propel with automatic shift		
Maximum Travel Speed			
Low	3.1 km/h (1.9 mph)		
High	5.2 km/h (3.2 mph)		
Drawbar Pull	25 085 kg (55,303 lb.)		
Hydraulics			
	Open center, load sensing		
Main Pumps	2 variable-displacement pumps		
Maximum Rated Flow	236 L/m (62.3 gpm) x 2		
System Operating Pressure			
Circuits			
Implement	34 300 kPa (4,975 psi)		
Travel	35 500 kPa (5,149 psi)		
Swing	33 300 kPa (4,830 psi)		
Power Boost	38 000 kPa (5,511 psi)		
Controls	Pilot levers, short stroke, low-effort hydraulic pilot controls with shutoff lever		
Cylinders			
	<i>Bore</i>	<i>Rod Diameter</i>	<i>Stroke</i>
Boom (2)	135 mm (5.3 in.)	95 mm (3.7 in.)	1422 mm (56.0 in.)
Arm (1)	150 mm (5.9 in.)	105 mm (4.1 in.)	1659 mm (65.3 in.)
Bucket (1)	135 mm (5.3 in.)	90 mm (3.5 in.)	1070 mm (42.1 in.)
Electrical			
Number of Batteries (12 volt)	2		
Battery Capacity	1,000 CCA		
Alternator Rating	100 amp		
Work Lights	2 halogen (1 mounted on left-hand side of boom, 1 on frame)		
Undercarriage			
Rollers (each side)			
Carrier	2		
Track	8		
Shoes, Triple Semi-Grousers (each side)	48		
Track			
Adjustment	Hydraulic		
Guides	3 per side		
Chain	Sealed and lubricated		
Ground Pressure			
Triple Semi-Grouser Shoes			
700 mm (28 in.)	50.0 kPa (7.26 psi)		
800 mm (32 in.)	43.8 kPa (6.35 psi)		

300G LC SPECIFICATIONS



Swing Mechanism 300G LC

Swing	
Speed	10.3 rpm
Torque	90 500 Nm (66,749 lb.-ft.)

Serviceability

Refill Capacities	
Fuel Tank	514 L (136 gal.)
Diesel Exhaust Fluid (DEF) Tank	35 L (9.2 gal.)
Cooling System	36 L (9.5 gal.)
Engine Oil with Filter	20.5 L (5 gal.)
Hydraulic Tank	156 L (41 gal.)
Hydraulic System	290 L (77 gal.)
Swing Drive	12 L (12.7 qt.)
Gearbox	
Propel (each)	9.2 L (9.7 qt.)
Pump Drive	1.1 L (1.2 qt.)

Operating Weights

With full fuel tank; 79-kg (175 lb.) operator; 1.44-m³ (1.88 cu. yd.), 1067-mm (42 in.), 1158-kg (2,553 lb.) bucket; 3.76-m (12 ft. 4 in.) arm; 5600-kg (12,346 lb.) counterweight; and 800-mm (32 in.) triple semi-grouser shoes

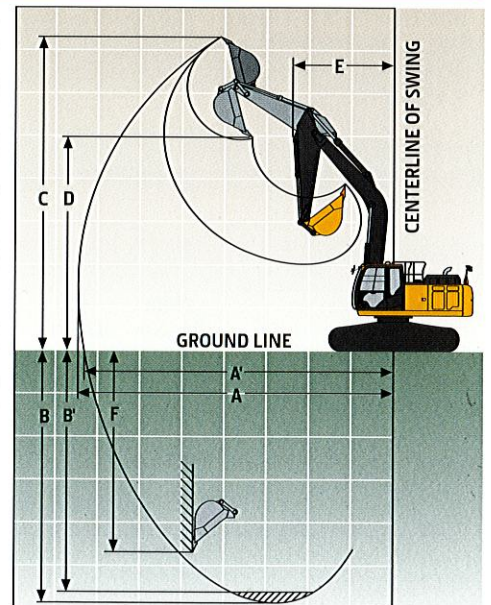
Operating Weight	31 399 kg (69,223 lb.)
------------------	------------------------

Component Weights

Undercarriage with Triple Semi-Grouser Shoes	
700 mm (28 in.)	11 478 kg (25,305 lb.)
800 mm (32 in.)	11 881 kg (26,193 lb.)
1-Piece Boom (with arm cylinder)	2322 kg (5,119 lb.)
Arm with Bucket Cylinder and Linkage	
3.11 m (10 ft. 2 in.)	1288 kg (2,840 lb.)
3.76 m (12 ft. 4 in.)	1377 kg (3,036 lb.)
Boom-Lift Cylinders (2), Total Weight	490 kg (1,080 lb.)
Counterweight, Standard	5600 kg (12,346 lb.)

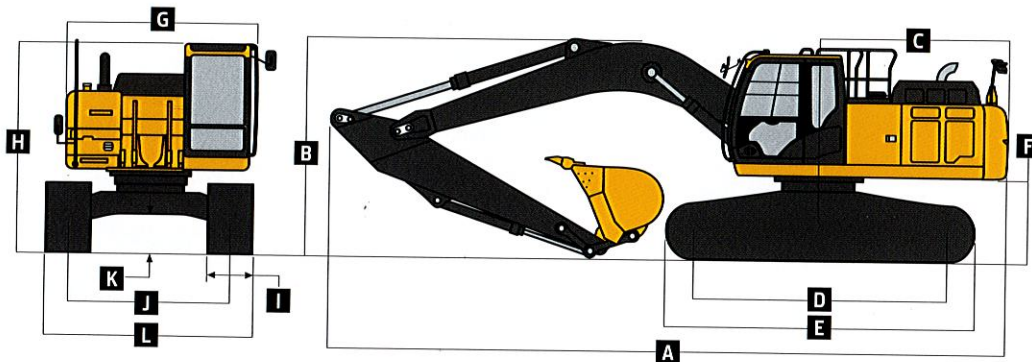
Operating Dimensions

Arm Length	3.11 m (10 ft. 2 in.)	3.76 m (12 ft. 4 in.)
Arm Digging Force		
SAE	138 kN (31,024 lb.)	121 kN (27,202 lb.)
ISO	144 kN (32,372 lb.)	127 kN (28,551 lb.)
Bucket Digging Force		
SAE	175 kN (39,342 lb.)	175 kN (39,342 lb.)
ISO	202 kN (45,411 lb.)	202 kN (45,411 lb.)
A Maximum Reach	10.71 m (35 ft. 2 in.)	11.27 m (37 ft. 0 in.)
A' Maximum Reach at Ground Level	10.52 m (34 ft. 6 in.)	11.09 m (36 ft. 5 in.)
B Maximum Digging Depth	7.22 m (23 ft. 8 in.)	7.87 m (25 ft. 10 in.)
B' Maximum Digging Depth at 2.44-m (8 ft. 0 in.) Flat Bottom	7.04 m (23 ft. 1 in.)	7.71 m (25 ft. 4 in.)
C Maximum Cutting Height	10.27 m (33 ft. 8 in.)	10.47 m (34 ft. 4 in.)
D Maximum Dumping Height	7.33 m (24 ft. 1 in.)	7.54 m (24 ft. 9 in.)
E Minimum Swing Radius	3.90 m (12 ft. 10 in.)	3.89 m (12 ft. 9 in.)
F Maximum Vertical Wall	6.48 m (21 ft. 3 in.)	7.05 m (23 ft. 2 in.)



300G LC

Machine Dimensions	300G LC	
Arm Length	3.11 m (10 ft. 2 in.)	3.76 m (12 ft. 4 in.)
A Overall Length	10.66 m (35 ft. 0 in.)	10.71 m (35 ft. 2 in.)
B Overall Height	3.20 m (10 ft. 6 in.)	3.38 m (11 ft. 1 in.)
C Tail-Swing Radius	3.25 m (10 ft. 8 in.)	3.25 m (10 ft. 8 in.)
D Distance Between Idler/Sprocket Centerline	4.05 m (13 ft. 3 in.)	4.05 m (13 ft. 3 in.)
E Undercarriage Length	4.94 m (16 ft. 2 in.)	4.94 m (16 ft. 2 in.)
F Counterweight Clearance	1.17 m (3 ft. 10 in.)	1.17 m (3 ft. 10 in.)
G Upperstructure Width	2.99 m (9 ft. 10 in.)	2.99 m (9 ft. 10 in.)
H Cab Height	3.11 m (10 ft. 2 in.)	3.11 m (10 ft. 2 in.)
I Track Width with Triple Semi-Grouser Shoes	700 mm (28 in.) / 800 mm (32 in.)	700 mm (28 in.) / 800 mm (32 in.)
J Gauge Width	2.59 m (8 ft. 6 in.)	2.59 m (8 ft. 6 in.)
K Ground Clearance	0.51 m (20 in.)	0.51 m (20 in.)
L Overall Width with Triple Semi-Grouser Shoes		
700 mm (28 in.)	3.29 m (10 ft. 10 in.)	3.29 m (10 ft. 10 in.)
800 mm (32 in.)	3.39 m (11 ft. 1 in.)	3.39 m (11 ft. 1 in.)



Lift Capacities
Boldface type indicates hydraulically limited capacity; **lightface type** indicates stability-limited capacities, in kg (lb.). Ratings at bucket lift hook; machine equipped with 957-kg (2,110 lb.) bucket; standard gauge; and situated on firm, uniform supporting surface. Total load includes weight of cables, hook, etc. Figures do not exceed 87 percent of hydraulic capacities or 75 percent of weight needed to tip machine. All lift capacities are based on ISO 10567.

LOAD POINT HEIGHT	HORIZONTAL DISTANCE FROM CENTERLINE OF ROTATION											
	1.5 m (5 ft.)		3.0 m (10 ft.)		4.5 m (15 ft.)		6.0 m (20 ft.)		7.5 m (25 ft.)		9.0 m (30 ft.)	
	Over Front	Over Side	Over Front	Over Side	Over Front	Over Side	Over Front	Over Side	Over Front	Over Side	Over Front	Over Side
<i>With 3.11-m (10 ft. 2 in.) arm and 700-mm (28 in.) shoes</i>												
6.0 m (20 ft.)							6300 (13,760)	6300 (13,760)	6130 (13,190)	5290 (11,340)		
4.5 m (15 ft.)					9000 (19,330)	9000 (19,330)	7370 (15,970)	7370 (15,970)	6570 (14,330)	5150 (11,070)		
3.0 m (10 ft.)					11 980 (25,720)	11 200 (24,150)	8770 (18,960)	7120 (15,350)	7270 (15,800)	4950 (10,650)	4730	3590
1.5 m (5 ft.)					14 400 (31,030)	10 460 (22,520)	10 090 (21,810)	6750 (14,530)	7980 (17,150)	4750 (10,220)	5570	3500
Ground Line					15 450 (33,420)	10 110 (21,740)	10 950 (23,690)	6500 (13,980)	7810 (16,800)	4610 (9,910)		
-1.5 m (-5 ft.)	5990 (13,420)	5990 (13,420)	9420 (21,410)	9420 (21,410)	15 380 (33,320)	10 030 (21,550)	11 090 (23,820)	6390 (13,750)	7740 (16,650)	4540 (9,770)		
-3.0 m (-10 ft.)	11 070 (24,860)	11 070 (24,860)	15 650 (35,600)	15 650 (35,600)	14 370 (31,100)	10 120 (21,740)	10 620 (22,910)	6420 (13,810)	7800	4590		
-4.5 m (-15 ft.)			16 830 (36,190)	16 830 (36,190)	12 110 (25,970)	10 370 (22,320)	8730 (18,420)	6610 (14,280)				

Lift Capacities (continued) 300G LC

Boldface type indicates hydraulically limited capacity; lightface type indicates stability-limited capacities, in kg (lb.). Ratings at bucket lift hook; machine equipped with 957-kg (2,110 lb.) bucket; standard gauge; and situated on firm, uniform supporting surface. Total load includes weight of cables, hook, etc. Figures do not exceed 87 percent of hydraulic capacities or 75 percent of weight needed to tip machine. All lift capacities are based on ISO 10567.

HORIZONTAL DISTANCE FROM CENTERLINE OF ROTATION

LOAD POINT HEIGHT	1.5 m (5 ft.)		3.0 m (10 ft.)		4.5 m (15 ft.)		6.0 m (20 ft.)		7.5 m (25 ft.)		9.0 m (30 ft.)	
	Over Front	Over Side	Over Front	Over Side	Over Front	Over Side	Over Front	Over Side	Over Front	Over Side	Over Front	Over Side
<i>With 3.11-m (10 ft. 2 in.) arm and 800-mm (32 in.) shoes</i>												
6.0 m (20 ft.)							6300	6300	6130	5360		
							(13,760)	(13,760)	(13,190)	(11,480)		
4.5 m (15 ft.)					9000	9000	7370	7370	6570	5220		
					(19,330)	(19,330)	(15,970)	(15,970)	(14,330)	(11,210)		
3.0 m (10 ft.)					11 980	11 330	8770	7210	7270	5020	4730	3640
					(25,720)	(24,420)	(18,960)	(15,530)	(15,800)	(10,790)		
1.5 m (5 ft.)					14 400	10 590	10 090	6830	7990	4820	5570	3550
					(31,030)	(22,800)	(21,810)	(14,720)	(17,330)	(10,360)		
Ground Line					15 450	10 240	10 950	6580	7910	4670		
					(33,420)	(22,020)	(23,690)	(14,170)	(17,020)	(10,050)		
-1.5 m (-5 ft.)	5990	5990	9420	9420	15 380	10 160	11 170	6470	7840	4600		
	(13,420)	(13,420)	(21,410)	(21,410)	(33,320)	(21,830)	(24,120)	(13,930)	(16,860)	(9,910)		
-3.0 m (-10 ft.)	11 070	11 070	15 650	15 650	14 370	10 240	10 620	6500	7900	4660		
	(24,860)	(24,860)	(35,600)	(35,600)	(31,100)	(22,020)	(22,910)	(14,000)				
-4.5 m (-15 ft.)			16 830	16 830	12 110	10 500	8730	6700				
			(36,190)	(36,190)	(25,970)	(22,590)	(18,420)	(14,470)				
<i>With 3.76-m (12 ft. 4 in.) arm and 700-mm (28 in.) shoes</i>												
7.5 m (25 ft.)									4330	4330		
6.0 m (20 ft.)									5410	5400		
									(11,880)	(11,570)		
4.5 m (15 ft.)							6530	6530	5950	5230	4420	3720
							(14,150)	(14,150)	(12,970)	(11,240)	(8,520)	(7,950)
3.0 m (10 ft.)					10 590	10 590	8000	7260	6730	5010	5700	3620
			(31,310)	(31,310)	(22,740)	(22,740)	(17,300)	(15,630)	(14,630)	(10,770)	(11,530)	(7,740)
1.5 m (5 ft.)					13 380	10 670	9470	6830	7560	4780	5920	3500
					(28,820)	(22,980)	(20,480)	(14,710)	(16,390)	(10,280)	(12,710)	(7,500)
Ground Line			5670	5670	15 000	10 160	10 570	6520	7810	4600	5820	3400
			(13,000)	(13,000)	(32,430)	(21,850)	(22,870)	(14,020)	(16,790)	(9,880)	(12,500)	(7,300)
-1.5 m (-5 ft.)	5650	5650	9100	9100	15 440	9970	11 050	6350	7690	4490	5050	3360
	(12,640)	(12,640)	(20,640)	(20,640)	(33,440)	(21,420)	(23,730)	(13,650)	(16,530)	(9,650)		
-3.0 m (-10 ft.)	9450	9450	13 660	13 660	14 900	9970	10 890	6320	7680	4480		
	(21,200)	(21,200)	(31,010)	(31,010)	(32,250)	(21,440)	(23,530)	(13,590)	(16,520)	(9,640)		
-4.5 m (-15 ft.)	14 050	14 050	19 080	19 080	13 270	10 150	9720	6430				
	(31,670)	(31,670)	(41,110)	(41,110)	(28,560)	(21,840)	(20,810)	(13,860)				
-6.0 m (-20 ft.)			13 820	13 820	9700	9700						
					(20,230)	(20,230)						

300G LC

Lift Capacities (continued)

300G LC

Boldface type indicates hydraulically limited capacity; lightface type indicates stability-limited capacities, in kg (lb.). Ratings at bucket lift hook; machine equipped with 957-kg (2,110 lb.) bucket; standard gauge; and situated on firm, uniform supporting surface. Total load includes weight of cables, hook, etc. Figures do not exceed 87 percent of hydraulic capacities or 75 percent of weight needed to tip machine. All lift capacities are based on ISO 10567.

LOAD POINT HEIGHT	HORIZONTAL DISTANCE FROM CENTERLINE OF ROTATION											
	1.5 m (5 ft.)		3.0 m (10 ft.)		4.5 m (15 ft.)		6.0 m (20 ft.)		7.5 m (25 ft.)		9.0 m (30 ft.)	
	Over Front	Over Side	Over Front	Over Side	Over Front	Over Side	Over Front	Over Side	Over Front	Over Side	Over Front	Over Side
<i>With 3.76-m (12 ft. 4 in.) arm and 800-mm (32 in.) shoes</i>												
7.5 m (25 ft.)									4330	4330		
6.0 m (20 ft.)									5410	5410		
									(11,880)	(11,710)		
4.5 m (15 ft.)							6530	6530	5950	5300	4420	3770
							(14,150)	(14,150)	(12,970)	(11,380)	(8,520)	(8,070)
3.0 m (10 ft.)					10 590	10 590	8000	7340	6730	5080	5700	3670
			(31,310)	(31,310)	(22,740)	(22,740)	(17,300)	(15,810)	(14,630)	(10,910)	(11,530)	(7,860)
1.5 m (5 ft.)					13 380	10 800	9470	6920	7560	4850	6000	3550
					(28,820)	(23,250)	(20,480)	(14,890)	(16,390)	(10,420)	(12,890)	(7,610)
Ground Line			5670	5670	15 000	10 290	10 570	6600	7910	4660	5900	3450
			(13,000)	(13,000)	(32,430)	(22,130)	(22,870)	(14,210)	(17,010)	(10,020)	(12,670)	(7,410)
-1.5 m (-5 ft.)	5650	5650	9100	9100	15 440	10 090	11 080	6430	7790	4550	5050	3410
	(12,640)	(12,640)	(20,640)	(20,640)	(33,440)	(21,690)	(23,980)	(13,840)	(16,750)	(9,790)		
-3.0 m (-10 ft.)	9450	9450	13 660	13 660	14 900	10 100	10 890	6400	7780	4540		
	(21,200)	(21,200)	(31,010)	(31,010)	(32,250)	(21,710)	(23,530)	(13,780)	(16,740)	(9,780)		
-4.5 m (-15 ft.)	14 050	14 050	19 080	19 080	13 270	10 280	9720	6510				
	(31,670)	(31,670)	(41,110)	(41,110)	(28,560)	(22,110)	(20,810)	(14,040)				
-6.0 m (-20 ft.)			13 820	13 820		9700	9700					
					(20,230)	(20,230)						

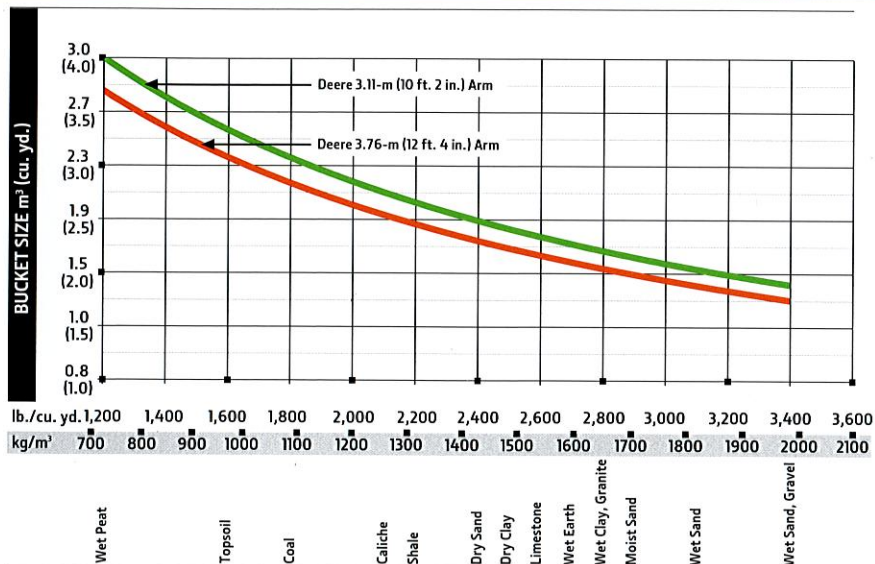
Buckets

300G LC

A full line of buckets is offered to meet a wide variety of applications. Digging forces are with power boost. Buckets are equipped with John Deere TK-Series Bucket Teeth standard. Replaceable cutting edges and a variety of teeth are available through John Deere Parts. Optional side cutters add 150 mm (6 in.) to bucket widths. Capacities are SAE heaped ratings.

Type Bucket	Bucket Width		Bucket Capacity		Bucket Weight		Bucket Dig Force		Arm Dig Force 3.11 m (10 ft. 2 in.)		Arm Dig Force 3.76 m (12 ft. 4 in.)		Bucket Tip Radius		Number of Teeth
	mm	in.	m ³	cu. yd.	kg	lb.	kN	lb.	kN	lb.	kN	lb.	mm	in.	
Heavy Duty	914	36	1.23	0.94	1010	2,226	189.7	42,653	144.1	32,397	125.1	28,126	1661	65.39	4
	1067	42	1.52	1.16	1147	2,530	189.7	42,653	144.1	32,397	125.1	28,126	1661	65.39	5
	1219	48	1.81	1.38	1213	2,675	189.7	42,653	144.1	32,397	125.1	28,126	1661	65.39	5
	1372	54	2.09	1.60	1328	2,928	189.7	42,653	144.1	32,397	125.1	28,126	1661	65.39	6

Bucket Selection Guide*



*Contact your John Deere dealer for optimum bucket and attachment selections. These recommendations are for general conditions and average use. Does not include optional equipment such as thumbs or couplers. Larger buckets may be possible when using light materials, for flat and level operations, less compacted materials, and volume loading applications such as mass excavation applications in ideal conditions. Smaller buckets are recommended for adverse conditions such as off-level applications, rocks, and uneven surfaces. Bucket capacity indicated is SAE heaped.

Additional equipment

Key: ● Standard ▲ Optional or special

See your John Deere dealer for further information.

250G	300G	Engine
●	●	Auto-idle system
●	●	Automatic belt-tension device
●	●	Batteries (2 – 12 volt)
●	●	Coolant recovery tank
●	●	Dual-element dry-type air filter
●	●	Electronic engine control
●	●	Enclosed fan guard (conforms to SAE J1308)
●	●	Engine coolant to –37 deg. C (–34 deg. F)
●	●	Programmable auto shutdown
●	●	Fuel filter with water separator
●	●	Fuel shutoff valve
●	●	Full-flow oil filter
●	●	Turbocharger with charge air cooler
●	●	Cool-on-demand hydraulic-driven fan
●	●	Glow-plug start aid
●	●	500-hour engine-oil-change interval
●	●	70% (35 deg.) off-level capability
●	●	Engine-oil-sampling valve
▲	▲	Hydraulic fan reverser
▲	▲	Chrome exhaust stack
▲	▲	Engine coolant heater
▲	▲	Engine air precleaner
▲	▲	Severe-duty fuel filter
Hydraulic System		
●	●	Reduced-drift valve for boom down, arm in
●	●	Auxiliary hydraulic valve section
●	●	Spring-applied, hydraulically released automatic swing brake
●	●	Auxiliary hydraulic-flow adjustments through monitor
●	●	Auto power lift
●	●	5,000-hour hydraulic-oil-change interval
●	●	Hydraulic-oil-sampling valve
●	●	Control pattern change valve
●	●	Powerwise Plus™ hydraulic-management system
▲	▲	Auxiliary hydraulics with combination piping
▲	▲	Auxiliary pilot and electric controls
▲	▲	Hydraulic filter restriction indicator kit
▲	▲	Load-lowering control / Anti-drift device
▲	▲	Single-pedal propel control
Undercarriage		
●	●	Planetary drive with axial piston motors
●	●	Propel motor shields
●	●	Spring-applied, hydraulically released automatic propel brake
●	●	Track guides, front idler and center
●	●	2-speed propel with automatic shift
●	●	Upper carrier rollers (2)
●	●	Sealed and lubricated track chain
●	●	Heavy-duty undercover

250G	300G	Undercarriage (continued)
▲		Triple semi-grouser shoes, 600 mm (24 in.)
▲	▲	Triple semi-grouser shoes, 700 mm (28 in.)
▲	▲	Triple semi-grouser shoes, 800 mm (32 in.)
Upperstructure		
●	●	Right-hand, left-hand, and counter-weight mirrors
●	●	Vandal locks with ignition key: Cab door / Service doors / Toolbox
●	●	Debris screen in side panel
●	●	Remote-mounted engine oil and fuel filters
▲	▲	“D” channel guard
Front Attachments		
●	●	Centralized lubrication system
●	●	Dirt seals on all bucket pins
●	●	Less boom and arm
●	●	Oil-impregnated bushings
●	●	Reinforced resin thrust plates
●	●	Tungsten carbide thermal coating on arm-to-bucket joint
▲		Arm, 2.50 m (8 ft. 2 in.)
▲		Arm, 2.96 m (9 ft. 9 in.)
	▲	Arm, 3.11 m (10 ft. 2 in.)
▲		Arm, 3.61 m (11 ft. 10 in.)
	▲	Arm, 3.76 m (12 ft. 4 in.)
▲	▲	Attachment quick-couplers
▲	▲	Boom cylinder with plumbing to mainframe for less boom and arm
▲	▲	Buckets: Heavy duty / Heavy-duty high capacity / Side cutters and teeth
▲	▲	Material clamps
▲	▲	Super-long fronts
Operator's Station		
●	●	Adjustable independent-control positions (levers-to-seat, seat-to-pedals)
●	●	AM/FM radio
●	●	Auto climate control/air conditioner/heater/pressurizer
●	●	Built-in Operator's Manual storage compartment and manual
●	●	Cell-phone power outlet, 12 volt, 60 watt, 5 amp
●	●	Coat hook
●	●	Deluxe suspension cloth seat with 100-mm (4 in.) adjustable armrests
●	●	Floor mat
●	●	Front windshield wiper with intermittent speeds
●	●	Gauges (illuminated): Diesel Exhaust Fluid (DEF) / Engine coolant / Fuel
●	●	Horn, electric
●	●	Hour meter, electric
●	●	Hydraulic shutoff lever, all controls
●	●	Hydraulic warm-up control

250G	300G	Operator's Station (continued)
●	●	Interior light
●	●	Large cup holder
●	●	Machine Information Center (MIC)
●	●	Mode selectors (illuminated): Power modes (3) / Travel modes (2 with automatic shift) / Work mode (1)
●	●	Multifunction, color LCD monitor with: Diagnostic capability / Multiple-language capabilities / Maintenance tracking / Clock / System monitoring with alarm features: Auto-idle indicator, engine air cleaner restriction indicator light, engine check, engine coolant temperature indicator light with audible alarm, engine oil pressure indicator light with audible alarm, low-alternator-charge indicator light, low-fuel indicator light, low DEF indication with audible alarm, fault code alert indicator, fuel-rate display, wiper-mode indicator, work-lights-on indicator, and work-mode indicator
●	●	Motion alarm with cancel switch (conforms to SAE J994)
●	●	Power-boost switch on right console lever
●	●	Auxiliary hydraulic control switches in right console lever
●	●	SAE 2-lever control pattern
●	●	Seat belt, 76 mm (3 in.), non-retractable
●	●	Tinted glass
●	●	Transparent tinted overhead hatch
●	●	Hot/cold beverage compartment
●	●	USB charging port
▲	▲	Air-suspension heated seat
▲	▲	Hydraulic oil filter restriction indicator light
▲	▲	Protection screens for cab front, rear, and side
▲	▲	Window vandal-protection covers
Electrical		
●	●	100-amp alternator
●	●	Blade-type multi-fused circuits
●	●	Positive-terminal battery covers
●	●	Battery-disconnect switch
●	●	JDLink™ wireless communication system (available in specific countries; see your dealer for details)
●	●	Rearview camera
▲	▲	Cab extension wiring harness
Lights		
●	●	Work lights: Halogen / 1 mounted on boom / 1 mounted on frame
▲	▲	2 lights mounted on cab / 1 mounted on right side of boom / 1 mounted under engine hood
▲	▲	LED light kit

Net engine power is with standard equipment including air cleaner, exhaust system, alternator, and cooling fan, at test conditions specified per ISO 9249. No derating is required up to 3050-m (10,000 ft.) altitude. Specifications and design subject to change without notice. Wherever applicable, specifications are in accordance with SAE standards. Except where otherwise noted, these specifications are based on units with 800-mm (32 in.) triple semi-grouser shoes, full fuel tanks, and 79-kg (175 lb.) operators; a 250G LC unit with 1219-mm (48 in.) bucket and 5112-kg (11,270 lb.) counterweight; and a 300G LC unit with 1067-mm (42 in.) bucket and 5600-kg (12,346 lb.) counterweight.

