

**BID SUBMITTAL FORM**  
**Alabama County Joint Bidding Program**  
**Heavy Equipment – Bid Item: Track Mount Excavator Option A-2**

Company Name: Cowin Equipment Company Inc.

Address: 4325 Northern Blvd  
Montgomery AL 36110

Bid Submitted by: John Edwards  
(Name of company representative)

Title: Governmental Sales Manager E-mail address: jedwards@cowin.com

Phone: o-334-262-6642 c-850-685-7055 Fax: 334-834-2272

By submitting this bid, we agree:

Initials

The equipment model number identified below meets the bid specs for this bid item

JE

That the bid price will be honored for all counties for the period from Jan. 1, 2021 to Dec. 31, 2021.

JE

The equipment will be delivered at the bid price to all counties participating in the joint bid program.

JE

The company acknowledges the freight preparation and delivery price is to be included in the total bid price for the standard machine.

JE

The company representative listed above will be the contact person for purchasing this bid item under the joint bid program.

JE

The bid is accompanied by a current catalog or model specification document for the model number identified below.

JE

The bid is accompanied by a copy of the manufacturer's standard warranty as required in the bid specifications.

JE

The bid includes the e-verify documentation required by Alabama law.

JE

If awarded the bid, a performance bond will be provided upon request.

JE.

The bid documents include the **Manufacturer's Suggested Retail Price Sheet (MSRP) for the Standard Machine.**

JE.

Total Bid Price for Standard Machine: \$ \$202,935.00  
(Total Bid Price for Standard Machine Includes Freight Preparation, Delivery and Standard Warranty Costs) \*

Freight Preparation and Delivery: \$ \$2,500.00  
(Included in Standard Machine Bid Price)

Manufacturer's Suggested Retail Price for Standard Machine: \$ \$243,474.00

Equipment Model #: Volvo EC300E

Description: Hydraulic Track Mounted Excavator

Signature of company representative submitting bid: 

Title: Governmental Sales Manager

\* **NOTE:** Award will be made based on the total cost of the **Standard Machine**. The total cost of the standard machine is to include the freight preparation, delivery and standard warranty cost. Freight preparation, delivery will be excluded from the total bid price of the standard machine in determining the percentage discount for any available options.

## BID SUBMITTAL FORM: OPTION COST SHEET

By submitting this bid, we agree:

To offer any available options at the percent difference between the Manufacturer's Suggested Retail Price Sheet and the actual bid price on the Standard Machine\*

8%

The bid documents include the **Manufacturer's Suggested Retail Price Sheet (MSRP)** for the Standard Machine

8%.

Equipment Model #: Volvo EC300E

Description: Hydraulic Track Mounted Excavator

Signature of company representative submitting bid: John Edwards

Title: Governmental Sales Manager

**\*Note:** The percent difference between the **Manufacturer's Suggested Retail Price Sheet (MSRP)** for the standard machine as specified by these **Bid Specifications** and the actual price bid by the vendor will be calculated to determine the percentage discount to be applied to any available options. The bid price of the freight preparation, delivery cost shall be excluded in determining the percentage discount to be applied to available options. Any individual county may choose to add any available option to the standard machine at the percentage discount at the time of purchase.

# **INVITATION TO BID**

## **HEAVY EQUIPMENT**

### **NOTICE OF BID OPENING**

**NOTICE IS HEREBY GIVEN** that the Association of County Commissions of Alabama, which administers the Alabama County Joint Bid Program on behalf of Alabama's county governing bodies, shall receive and open bids for the purchase of zero (0) or more items of heavy road equipment at its office located at 2 North Jackson Street, Montgomery, Alabama, at 10:00 a.m. on Friday, September 4, 2020. Bid specifications are available at <http://www.alabamacounties.org/heavy-equipment/> for each of the following items:

Light Duty Backhoe  
Medium Duty Backhoe  
Heavy Duty Backhoe Option A  
Heavy Duty Backhoe Option C  
85 PTO Tractor Option A  
85 PTO Tractor Option B  
95 PTO Tractor Option A  
95 PTO Tractor Option B  
Track Mount Excavator Option A-1  
Track Mount Excavator Option A-2  
Track Mount Excavator Option A-3  
Track Mount Excavator Option B-1  
Track Mount Excavator Option B-2  
Track Mount Excavator Option B-3  
Track Mount Excavator Option C-1  
Track Mount Excavator Option C-2  
19 Ton Wheeled Excavator  
21 Ton Wheeled Excavator  
Compact Track Mount Excavator Option D-1  
Compact Track Mount Excavator Option D-2  
Light Duty Motorgrader – Option A  
Light Duty Motorgrader – Option B  
Heavy Duty Motorgrader – Option A  
Heavy Duty Motorgrader – Option B  
Medium Duty Motorgrader – Option A  
Medium Duty Motorgrader – Option B  
Medium Duty Motorgrader – AWD  
Light Duty Motorgrader – Option B

100 HP Heavy Duty Hydrostatic Bulldozer –Option B  
100 HP Heavy Duty Hydrostatic Bulldozer – Option C  
100 HP Heavy Duty Hydrostatic Bulldozer – Option D  
125 HP Heavy Duty Hydrostatic Bulldozer – Option A  
125 HP Heavy Duty Hydrostatic Bulldozer – Option B  
Mulching Dozer  
3 CY Wheel Loader Option A  
3 CY Wheel Loader Option B  
3 CY Wheel Loader Option C  
3.65 CY Wheel Loader Option A  
3.65 CY Wheel Loader Option B  
Heavy Duty Dump Chassis – Option B  
Heavy Duty Dump Chassis – Option C  
Heavy Duty Dump Chassis – Option E  
Lowboy Tractor Option – B  
Lowboy Tractor Option – C  
Lowboy Tractor Option – D  
Skid Steer Attachments  
Ride-on Industrial Boom Mower  
Telescopic Boom Cutter 75 FT. Reach  
Telescopic Boom Cutter 55 FT. Reach  
Asphalt Distributor Truck  
Chip Spreader  
Rubber Tire Roller  
One-man Pothole Patcher Option A  
2WD Highway Speed Truck Excavator  
4WD Highway Speed Truck Excavator



**Time is of the essence in submitting bids and only bids received in the Association office by 10:00 a.m. Central Time on Friday, September 4, 2020 will be opened and considered.** Bidders and any other interested individuals are invited to attend the bid opening.

### **THE INVITATION PACKAGE**

The invitation package for each item to be bid includes: this invitation to bid, the written bid specifications for the particular item of heavy road equipment, and a Bid Submittal Form to be used in submitting a bid for that particular item. Bidders should verify that they have received all pages of the invitation package. If there are any omissions, the bidder should contact Kenya Howard in the Association office by mail, fax, or e-mail ([jointbid@alabamacounties.org](mailto:jointbid@alabamacounties.org)) to request missing pages. It is the responsibility of the bidder to make this request in sufficient time to prepare and submit the bid in time for the bid opening. Bidders should carefully read and comply with all parts of the invitation package, including all attachments and/or any addendum.

### **PREPARING AND SUBMITTING BIDS**

All bids must be typed or hand written in ink on the attached Bid Submittal Form. **The completed Bid Submittal Form shall be placed in front of and separated from all other documents included in the bid packet, such that it will be the first document viewed upon opening the bid packet.**

Bids submitted in pencil and bids not submitted on the Bid Submittal Form will **not** be considered. All bids shall include a current catalog or model specification document for the equipment model number being offered for consideration. Bids submitted without such documentation will **not** be considered. Only information contained on the attached Bid Submittal Form and in the model specification document will be considered in evaluating bids.

Each separate requirement in the bid specification includes a block for indicating whether or not the item bid meets the specification. The bidder shall indicate compliance with each requirement by checking "Yes" or "No" in the block to the right of each bid specification. In addition, the bidder shall indicate the page number in the supplied manufacturer's equipment literature on which compliance with the specification can be verified. Failure to complete this portion of the bid form may result in the subject bid not being considered.

Each bid for one of the heavy equipment items included in the bid package must be submitted on the Bid Submittal Form for that item and forwarded in a separate envelope with the bid item and item number clearly identified on the outside of the envelope. Envelopes containing a "no bid" shall also include the words "NO BID" on the outside of the envelope. Facsimiles and e-mails will not be accepted. Bids submitted by "Express/Overnight" services must be in a separate inner envelope or package sealed and identified as stated above. All bids must be received in the Association office prior to the bid opening. Bids received after the deadline will be returned unopened.

The County Joint Bid Program reserves the right to require a performance bond from successful bidders as permitted under Alabama law. However, **no bid bond is required for this bid offering.**

All bids should be mailed or hand-delivered to:

<b>Association of County Commissions of Alabama</b>	
<b>Attention: JOINT BID PROGRAM</b>	<b>Attention: JOINT BID PROGRAM</b>
<b>2 North Jackson Street</b>	<b>OR P.O. Box 5040</b>
<b>Montgomery, Alabama 36104</b>	<b>Montgomery, Alabama 36103</b>

## **BID SPECIFICATIONS**

Please note that each piece of heavy equipment available for bid may include several different sizes and categories of machines. You should read each set of specifications very carefully as the differences vary depending upon the piece and size of equipment.

The award will be based on the total cost of the **Standard Machine** bid by the lowest responsible bidder. Each Bid shall include a **Manufacturer's Suggested Retail Price Sheet (MSRP)** for each machine bid. The percent difference between the Manufacturer's Suggested Retail Price (MSRP) for the standard machine as specified by these bid specifications and the actual price bid by the vendor will be calculated and that percentage discount shall be applied to any options an individual county may choose to add to the machine.

Once the bids have been awarded, any county participant purchasing under this program may, at its discretion, add any of the vendor's available options at the same discount off the Manufacturer's Suggested Retail Price Sheet as was applied to the Standard Machine Price Bid.

Any use of specific names and/or model numbers in the attached specifications is not intended to restrict the bidder or any seller or manufacturer, but is included solely for the purpose of indicating the type, size, and quality of materials, product services, or equipment considered best adapted to the use of the counties participating in the joint bid program.

## **ACQUISITION AND FINANCING OPTIONS**

The awarded Vendor will provide the equipment, including any options required by the purchaser, at the awarded price as contracted through the Joint Bid Program. The purchaser may secure its own financing to acquire the equipment or execute any financial options available under Alabama law with the awarded Vendor in order to acquire the equipment.

## **BIDDER QUALIFICATIONS**

All bidders and all program participants must be in compliance with any applicable federal, state, county and municipal laws, regulations, resolutions and ordinances, including but not limited to, licensing, permitting, and taxation requirements. All bidders should be prepared to submit evidence or documentation as proof that they are properly licensed and permitted under any applicable laws upon request. Such evidence or documentation may be submitted with the bid. Additionally, all bidders shall provide proof that they are in compliance with the e-verify requirements of Alabama's Immigration Law (Ala. Code § 31-13-1 et seq., as amended by Act No. 2012-491).

## **BID AWARD**

The Houston County Commission will serve as the awarding authority for all bids and will award all contracts at a regular meeting of the Houston County Commission. Any and all bids submitted in compliance with this invitation to bid shall be considered, and award will be made to the lowest responsible bidder meeting bid specifications as determined by the awarding authority in compliance with Alabama law. All bids will be reviewed and evaluated by a committee created for that purpose, which committee will make comments and recommendations to the awarding authority regarding the award. All factors contained in each invitation package will be evaluated in determining the successful bidder, and any omissions of the stated requirements may be cause for rejection of the bid submitted. The awarding authority reserves the right to reject any and all bids, to waive any informality in bids, and to accept in whole or in part such bid or bids solely at its discretion.



The contract period will be one year with an option to renew for a second and third year under identical price, terms, and conditions upon the mutual consent of the vendor and the awarding authority. Any renewal contract shall be approved in writing by the vendor and the awarding authority no later than 90 days prior to the expiration of the existing contract.

### **CONTACT REGARDING BIDS AND INVITATION**

Contact initiated by a potential bidder with any county official, county employee, or member of the Association staff shall only be as specifically set out in this Invitation to Bid. Any questions related to the bid or the County Joint Bid Program shall be directed to Association staff in writing under the procedures set out in this Invitation to Bid.

Additionally, a bidder may contact the Association in writing to request an appointment to review bid specifications following the bid opening. **However, there shall be no communication with any county official or county employee regarding this bid between the date of this invitation and the date of bid award.** Any contact other than as set out here shall be deemed as an attempt to unduly influence the bid award, and shall be grounds for rejection of the bid submitted by the bidder initiating such other contact.

Any questions or problems related to downloading or obtaining copies of this Invitation to Bid should be directed to Kenya Howard at [jointbid@alabamacounties.org](mailto:jointbid@alabamacounties.org) or 334-263-7594.

Any other questions or requests for additional information regarding this invitation or the bid specifications shall be submitted **in writing** no later than five (5) days prior to bid opening to:

ATTN: Chase Cobb  
Association of County Commissions of Alabama  
P.O. Box 5040  
Montgomery, Alabama 36103  
E-mail: [ccobb@alabamacounties.org](mailto:ccobb@alabamacounties.org)

# **BID SPECIFICATIONS FOR TRACK-MOUNTED EXCAVATOR OPTION A-2**

## **GENERAL**

These specifications shall be construed as the minimum acceptable standards for a track mounted hydraulic excavator with long undercarriage. Should the manufacturer's current published data or specifications exceed these standards, the manufacturer's standards shall be considered minimum and shall be furnished. All integral parts not specifically mentioned in the scope of these specifications that are necessary to provide a complete working unit shall be furnished. Additionally, the machine offered for bid shall include all standard manufacturers' equipment. The excavator must be a new current production model and shall meet or exceed all EPA and other applicable standards at the time of manufacture.

Use of specific names and numbers in the specifications is not intended to restrict the bidder or any seller or manufacturer, but is intended solely for the purpose of indicating the type, size and quality of equipment considered best adapted to the uses of the counties participating in this joint bid.

## **BID SUBMITTAL FORM**

Each bidder must submit his or her bid on the bid submittal form included in the invitation to bid package. All written warranties to be submitted shall be attached to the bid submittal form.

## **BID PRICE**

The price bid shall include all destination charges, delivery charges, title fees, rebates, and all other applicable costs and refunds.

## **MANUALS**

Each unit shall be provided with one (1) copy of the operator's manual, one [1] repair manual, and one (1) copy of the current parts manual. Units will not be accepted for delivery until the manuals as outlined above are received by the purchaser.

## **REPLACEMENT PARTS AVAILABILITY**

Parts must be available for 5 years or 7,500 hours of use for the piece of equipment. If any replacement parts are not delivered within three (3) working days of an order being placed, the bidder will deliver an equivalent machine for the county to use at no cost to the county until such time as the parts are delivered to the county so it can affect repairs to its machine.

## **WARRANTY**

Bidders shall submit a copy of the manufacturer's standard warranty. Warranty shall include service response time of maximum of 36 hours within notification by county.

Yes ☒ No ☐  
Page#   
or  
Attachment ☒



### **WEIGHT**

Minimum 68,000 lbs. equipped with minimum 31 inch wide track shoes.

Yes ☒ No ☐  
Page # 26

### **ENGINE**

Turbocharged, 6 cylinders with a minimum 400 cubic inch displacement diesel engine capable of a minimum 210 net horsepower.

Yes ☒ No ☐  
Page # 20

**Engine shall be manufactured by the equipment manufacturer.**

Yes ☒ No ☐  
Page # 20

### **UNDERCARRIAGE**

Track length shall be minimum 15' 3".

Yes ☒ No ☐  
Page # 22

Track shoe width shall be minimum 31" (Triple grouser Shoes)

Yes ☒ No ☐  
Page # 20

Minimum eight (8) track rollers per side.

Yes ☒ No ☐  
Page # 20

Minimum two (2) carrier rollers per side.

Yes ☒ No ☐  
Page # 20

### **STARTING SYSTEM**

24 volt system with a minimum 100 amp alternator.

Yes ☒ No ☐  
Page # 20

### **CAPACITIES**

Fuel Tank Capacity – 105 gallon minimum

Yes ☒ No ☐  
Page # 20

Hydraulic Tank Capacity – 34 gallon minimum

Yes ☒ No ☐  
Page # 20

Engine Coolant – 7 gallon minimum

Yes ☒ No ☐  
Page # 20

### **BOOM AND STICK**

One piece boom with minimum 19' length

Yes ☒ No ☐  
Page # 23

Stick shall be a minimum 9' long

Yes ☒ No ☐  
Page # 23

## **DIMENSIONS**

Reach at ground level – 33' minimum

Yes ☒ No ☐  
Page # 24

Bucket breakout force (SAE) – minimum 37,000 lbs.

Yes ☒ No ☐  
Page # 24

Stick digging force (SAE) – minimum 28,000 lbs.

Yes ☒ No ☐  
Page # 24

## **Bucket:**

**Standard with no bucket. Buckets will be considered optional attachment's.**

## **HYDRAULICS**

Hydraulic pump output shall be a minimum of 120 GPM

Yes ☒ No ☐  
Page # 21

## **CAB**

Enclosed ROPS cab:

Yes ☒ No ☐  
Page # 34

Heater

Yes ☒ No ☐  
Page # 34

Factory installed air conditioning

Yes ☒ No ☐  
Page # 34

AM/FM radio

Yes ☒ No ☐  
Page # 34

Suspension seat

Yes ☒ No ☐  
Page # 35

Defroster

Yes ☒ No ☐  
Page # 34 attached

Shall be equipped with a 12-volt converter capable of powering a two-way radio.

Yes ☒ No ☐  
Page # option

## Model: Volvo EC300EL Crawler Excavator

Description	Article	MSRP
Volvo EC300EL Crawler Excavator	EC300EL	197,091.20
Boom, 20' 4" (6.2m), GP	XC10107	14,990.60
Arm, 10' 0" (3.05m), HD	XC10213	8,245.68
Linkage with lifting eye, GP	XC10403	427.04
Decal Kit NA	XC10503	0.00
Track Pads, 32" Triple Grouser	XC20106	11,077.88
Roller guard STD	XC20201	368.56
Lower frame - foldable steps	XC20302	0.00
Belly Cover HD, 10mm	XC20402	257.04
Engine NA	XC30101	0.00
Cooling System High Capacity	XC30202	0.00
Standard fan drive	XC30801	0.00
Air precleaner, Cyclone	XC30401	91.80
Anti-vandal mounting brackets on cab	XC40112	0.00
CareCab w/ Opening Hatch	XC40103	372.64
Seat, Air suspension w/Heater & X-Isolator	XC40203	988.72
Seat Belt, 3 inch Retractable	XC41204	0.00
Air conditioning, ACC (automatic climate control)	XC40502	2,079.44
Universal key	XC40602	0.00
Radio with MP3, USB port & Bluetooth	XC40708	0.00
Guardrail	XC50801	0.00
Work lights on deck & boom, Halogen	XC50000	0.00
Extra work lights on cab front/rear, CWT, boom & RH side, Halogens	XC50101	282.20
Travel alarm	XC50102	0.00
Battery switch protector	XC50132	0.00
Volvo Smart View on Instrument Cluster only	XC50144	0.00
Dig Assist Start	XC50155	0.00
CareTrack, GSM/Satellite	XC50402	0.00
CareTrack Connectivity 4 yr Subscription	XC50404	0.00
De-activate SAT	XC50406	0.00
Hydraulic oil ISO VG46	XC60102	493.00
Manual, English	XC70302	0.00
CWT 5500kg, Fabrication	XC80187	6,321.96
Under cover HD, 4.5mm superstructure	XC80202	0.00
Frame lifetime guarantee	XC70501	386.24
Less Bucket With Pins	XC8283909	0.00
<b>TOTAL MSRP STANDARD SPECIFICATION</b>		<b>243,474.00</b>





**Volvo Construction Equipment North America**  
**Warranty – Disclaimers – Limitations**  
**Limited Warranty for Governmental / Municipalities**

Volvo Construction Equipment North America ("Volvo CE") hereby extends to its authorized dealers ("Dealer") and the Dealer's Governmental / Municipalities customers ("Customer", and both Dealer and Customer are referred to herein as a "Buyer"), who purchase a new Volvo construction equipment machine ("Machine") or new Volvo part ("Part", both of which are referred to herein as a "Product") from Volvo, the following limited warranty:

Subject to the exceptions and limitations set forth below, Volvo CE or Dealer will repair or replace any part of a new Machine or new Part which proves to be defective in material or workmanship during the following periods (the "Warranty Period"):

- Volvo wheel loaders: 12 months/2500 hours, whichever first occurs
- Volvo articulated haulers: 12 months/2500 hours, whichever first occurs
- Volvo hydraulic excavators: 12 months/2500 hours, whichever first occurs
- Volvo motor graders: 12 months/2500 hours, whichever first occurs
- Volvo compactors: 12 months/1500 hours, whichever first occurs
  - 24 months unlimited hours on DD90 and larger compactors
- Volvo pavers: 12 months/1500 hours, whichever first occurs
  - 24 months unlimited hours on 6000 / 7000 series pavers
- Volvo milling: 12 months/1500 hours, whichever first occurs
- Volvo compact wheel loaders (up to 100 net hp.): 12 months/unlimited hours
- Volvo skid steer loaders: 12 months/unlimited hours; Lifetime arm for one-sided
- Volvo compact hydraulic excavators (less than 11 metric tons): 12 months/unlimited hours
- Volvo backhoe loaders: 12 months/unlimited hours
- Volvo engines: 12 months/2500 hours, whichever first occurs
- Volvo parts: 6 months/1500 hours, whichever first occurs
- Volvo remanufactured components: 12 months/2500 hours, whichever first occurs
- Volvo Attachments: 12 months

The Warranty Period commences immediately following the delivery of said Product to the Buyer who first puts said Product into use. The foregoing limited warranty shall include the labor cost to accomplish the repair or replacement of the defective part provided that the repair or replacement was performed by a Dealer.

The foregoing warranty does not cover: (i) any Product found to have been damaged by abuse, accident, other casualty or a failure to maintain or use the warranted Product in accordance with the applicable manuals or instructions (Buyer is required to use only original equipment manufacturer filters during the Warranty Period); (ii) the labor costs to repair or replace defective Parts after the expiration of the Warranty Period of the Machine in which such Part is located; (iii) overtime labor premiums; (iv) costs and expenses associated with the transportation of Dealer's service personnel to and from the location of the warranted Product; (v) any parts, components, attachments or accessories for which Buyer receives a separate warranty by the manufacturer or producer thereof (in specified cases said warranty may be administered by Volvo CE); (vi) maintenance items or ground engaging parts that have achieved their normal service life.

**DISCLAIMER OF IMPLIED WARRANTIES AND LIMITATION OF REMEDIES**

THE FOREGOING WARRANTY TO BUYER IS EXCLUSIVE AND IS IN LIEU OF ALL OTHER WARRANTIES, EXPRESSED OR IMPLIED, AND THERE IS NO IMPLIED WARRANTY OF MERCHANTABILITY OR FITNESS FOR A PARTICULAR PURPOSE.

REMEDIES AVAILABLE TO BUYER ARE LIMITED TO MAKING A CLAIM UNDER THE FOREGOING WARRANTY AND ARE EXCLUSIVE AND EXPRESSLY LIMITED TO OBTAINING THE PARTS AND LABOR IN ACCORDANCE WITH THE TERMS OF SAID WARRANTY.



## **Warranty – Disclaimers – Limitations**

### **LIMITATIONS OF LIABILITY AND DAMAGES**

Regardless of whether a claim against Volvo CE or Dealer is based on the foregoing warranty or is an action in contract, tort (negligence or strict liability) or otherwise, their respective liability for losses, damages or expenses of any kind arising from the design, manufacture, repair or sale of the Products is limited, unless otherwise prohibited by law, to an amount not exceeding the cost performing the obligations contained in the foregoing warranty, and in no event shall their respective or joint liability exceed the value of the Product or part thereof giving rise to such liability.

### **CONSEQUENTIAL AND SIMILAR DAMAGES NOT RECOVERABLE**

Except for performing the obligations of the foregoing warranty in accordance with its terms, Volvo CE and Dealer shall have no liability for loss, damage, or expense, directly or indirectly, attributable to a loss of use of a Product, loss or damage to property other than the Product, loss or damage to the Product or any part thereof or any other economic or commercial loss, including, without limitation, lost profits or special or consequential damages (except liability for any type of consequential damages which by law may not be disclaimed). The parties intend that this prohibition against consequential and similar damages will survive and be effective even if the limitation of remedies in the foregoing sections is found to fail of its essential purpose under section 2-719 of the Uniform Commercial Code.

### **ALLOCATION OF RISK**

The foregoing warranty disclaimers, limitations of liability and limitation of remedies are bargained allocations of risks among (i) the Customer who purchased the Product; (ii) the Dealer who sold the Product, and (iii) Volvo CE, which is a third party beneficiary of the contract of sale between the Customer and the Dealer. The Buyer of the Product accepts the foregoing warranty and the other bargained for allocations of risk as part of the agreed price for the purchase of the Product to which the foregoing warranty applies. Volvo CE is prepared to offer different warranties and other allocations of risk for other prices. However, any such change in the warranty or the allocation of risks must be confirmed in writing by Volvo CE.

### **STATUTE OF LIMITATIONS**

Any action by a Buyer of a Product for breach of contract, for breach of warranty arising under, or for a cause of action arising out of the sale of a Product, whether based on contract, tort (negligence or strict liability) or otherwise, shall be commenced within one (1) year after the cause of action has accrued. Any such cause of action shall be deemed to have accrued at the earlier of (i) the discovery of the defect or breach, or (ii) the expiration of the applicable Warranty Period.

### **ACCA Response Commitment**

**Cowin Equipment Commits to respond to a call from a county concerning a warranty repair within 36 hours.**





Company ID Number: 505216

## THE E-VERIFY PROGRAM FOR EMPLOYMENT VERIFICATION MEMORANDUM OF UNDERSTANDING

### ARTICLE I

#### PURPOSE AND AUTHORITY

This Memorandum of Understanding (MOU) sets forth the points of agreement between the Department of Homeland Security (DHS) and Cowin Equipment Co Inc (Employer) regarding the Employer's participation in the Employment Eligibility Verification Program (E-Verify). This MOU explains certain features of the E-Verify program and enumerates specific responsibilities of DHS, the Social Security Administration (SSA), and the Employer. E-Verify is a program that electronically confirms an employee's eligibility to work in the United States after completion of the Employment Eligibility Verification Form (Form I-9). For covered government contractors, E-Verify is used to verify the employment eligibility of all newly hired employees and all existing employees assigned to Federal contracts or to verify the entire workforce if the contractor so chooses.

Authority for the E-Verify program is found in Title IV, Subtitle A, of the Illegal Immigration Reform and Immigrant Responsibility Act of 1996 (IIRIRA), Pub. L. 104-208, 110 Stat. 3009, as amended (8 U.S.C. § 1324a note). Authority for use of the E-Verify program by Federal contractors and subcontractors covered by the terms of Subpart 22.18, "Employment Eligibility Verification", of the Federal Acquisition Regulation (FAR) (hereinafter referred to in this MOU as a "Federal contractor with the FAR E-Verify clause") to verify the employment eligibility of certain employees working on Federal contracts is also found in Subpart 22.18 and in Executive Order 12989, as amended.

### ARTICLE II

#### FUNCTIONS TO BE PERFORMED

##### A. RESPONSIBILITIES OF SSA

1. SSA agrees to provide the Employer with available information that allows the Employer to confirm the accuracy of Social Security Numbers provided by all employees verified under this MOU and the employment authorization of U.S. citizens.
2. SSA agrees to provide to the Employer appropriate assistance with operational problems that may arise during the Employer's participation in the E-Verify program. SSA agrees to provide the Employer with names, titles, addresses, and telephone numbers of SSA representatives to be contacted during the E-Verify process.
3. SSA agrees to safeguard the information provided by the Employer through the E-Verify program procedures, and to limit access to such information, as is appropriate by law, to individuals responsible for the verification of Social Security Numbers and for evaluation of the E-Verify program or such other persons or entities who may be authorized by SSA as governed



Company ID Number: 505216

To be accepted as a participant in E-Verify, you should only sign the Employer's Section of the signature page. If you have any questions, contact E-Verify at 888-464-4218.

<b>Employer Cowin Equipment Co Inc</b>	
<b>Tracy Womack</b>	
Name (Please Type or Print)	Title
<b>Electronically Signed</b>	<b>02/15/2012</b>
Signature	Date

Department of Homeland Security – Verification Division

**USCIS Verification Division**

Name (Please Type or Print)	Title
<b>Electronically Signed</b>	<b>02/15/2012</b>
Signature	Date

**Information Required for the E-Verify Program**

**Information relating to your Company:**

Company Name:	Cowin Equipment Co Inc
Company Facility Address:	2238 Pinson Valley Parkway
	Birmingham, AL 35217
Company Alternate Address:	PO Box 10624
	Birmingham, AL 35202
County or Parish:	JEFFERSON
Employer Identification Number:	630141942

**Company ID Number: 475502**

**E-VERIFY  
CORPORATE COMPANY**

**If you have any questions, contact E-Verify at  
888-464-4218.**

**INFORMATION REQUIRED  
FOR E-VERIFY**

Information relating to your Company:

Company Name: Cowin Equipment Company Inc

Company Facility Address: 2238 Pinson Valley Parkway  
Birmingham, AL 35217

County or Parish: JEFFERSON

Information relating to the Corporate Administrator(s) for your Company on policy questions or operational problems:

Name:	<b>George Tickle</b>	Fax Number:	<b>(205) 841 - 2639</b>
Telephone Number:	<b>(205) 488 - 3950</b>		
E-mail Address:	<b>gtickle@cowin.com</b>		
Name:	<b>Tracy Womack</b>	Fax Number:	<b>(205) 488 - 3164</b>
Telephone Number:	<b>(205) 488 - 3959</b>		
E-mail Address:	<b>twomack@cowin.com</b>		



ACCA

Volvo Construction Equipment  
Building Tomorrow



John Edwards  
Governmental Sales Manager  
850-685-7055  
[jedwards@cowin.com](mailto:jedwards@cowin.com)

# EC250E, EC300E

Volvo Excavators 24.6-33.9 t / 54,230-74,740 lb 213-241 hp





# A passion for performance

At Volvo Construction Equipment, we're not just coming along for the ride. Developing products and services that raise productivity – we are confident we can lower costs and increase profits for customers around the globe. Part of the Volvo Group, we are passionate about innovative solutions to help you work smarter – not harder.

## Helping you to do more

Doing more with less is a trademark of Volvo Construction Equipment. High productivity has long been married to low energy consumption, ease of use and durability. When it comes to lowering life-cycle costs, Volvo is in a class of its own.

## Designed to fit your needs

There is a lot riding on creating solutions that are suited to the particular needs of different industry applications. Innovation often involves high technology – but it doesn't always have to. Some of our best ideas have been simple, based on a clear and deep understanding of our customers' working lives.



## You learn a lot in 180 years

Over the years, Volvo has advanced solutions that have revolutionized the use of construction equipment. No other name speaks Safety louder than Volvo. Protecting operators, those around them and minimizing our environmental impact are traditional values that continue to shape our product design philosophy.

## We're on your side

We back the Volvo brand with the best people. Volvo is truly a global enterprise, one that is on standby to support customers quickly and efficiently – wherever they are.

## We have a passion for performance.

## A strong, dedicated, capable dealer network

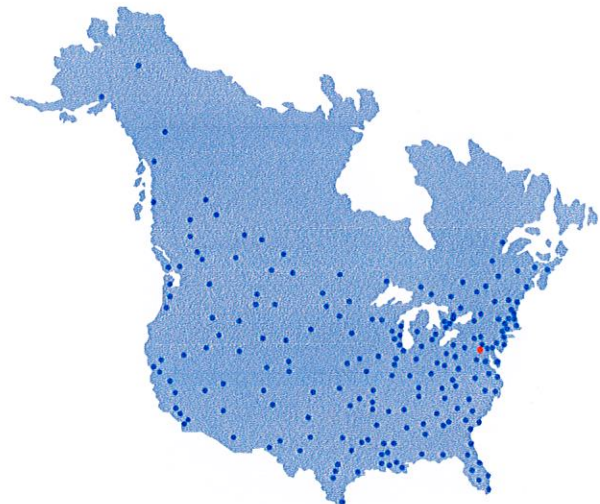
Our dealers are strategically located throughout North America to provide the equipment you need and the parts and service support you demand for a productive and profitable operation.

The strength of our dealer network is enhanced with extensive individualized product support training at our best-in-class Customer Center in Shippensburg and through hands-on training. Using a great Product Demonstration Center featuring a dedicated area for most common applications, visitors operate equipment from our entire product line under a variety of simulated working conditions. This facility is in year-round use by our dealers and customers.

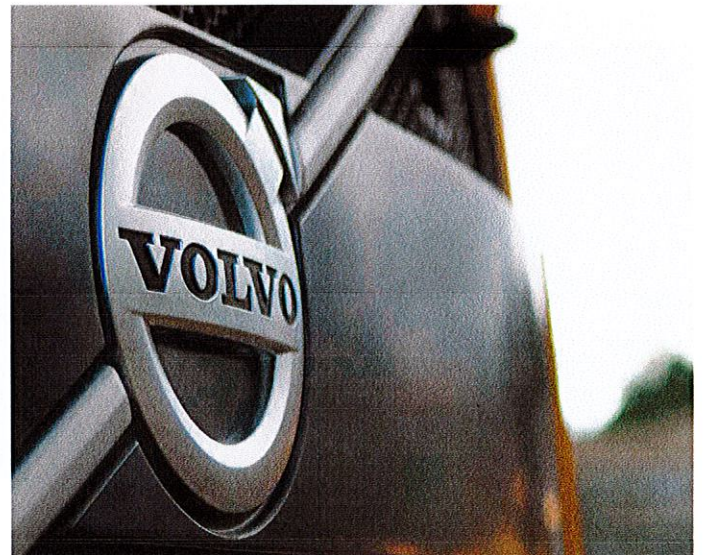
## Building the best starts right here.

The products designed and manufactured by Volvo Construction Equipment have their beginnings at the most advanced Research & Design centers in the industry. Volvo CE machines are designed in 11 R&D centers and produced in 15 manufacturing facilities across the world.

The major R&D center and manufacturing plant in the Americas is located in Shippensburg, Pennsylvania. This facility has been in operation for over 30 years and – with its recently added 200,000 sq. ft. expansion – now covers 570,000 sq. ft. on an 80 acre campus. Dedicated work teams and highly advanced technologies and techniques using the Volvo Production System ensure continuous quality improvements, labor savings and cost control to reach the high quality that our customers have come to expect from Volvo.







Volvo Trucks



Renault Trucks



Mack Trucks



UD Trucks



Volvo Buses



Volvo Construction Equipment



Volvo Penta



Volvo Financial Services

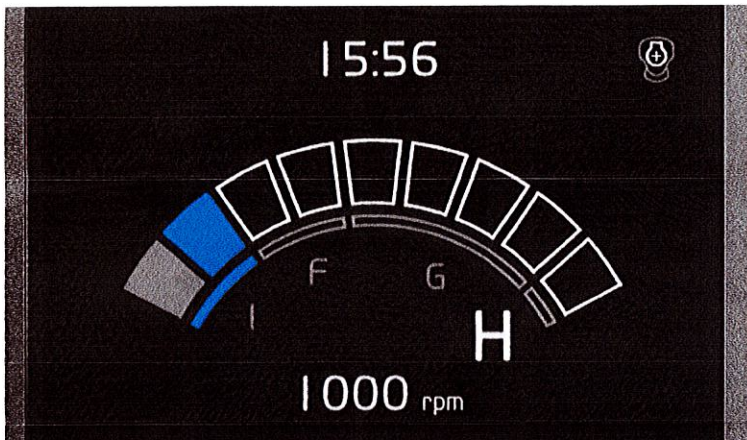


# Doing more for you

Volvo's EC250E/EC300E Tier 4 Final crawler excavators are powerful and efficient machines designed to reduce fuel consumption and increase your productivity. With advanced technology, the machines deliver a significant improvement in fuel efficiency, saving your business time and cost. Put your mind at ease with a Volvo excavator.

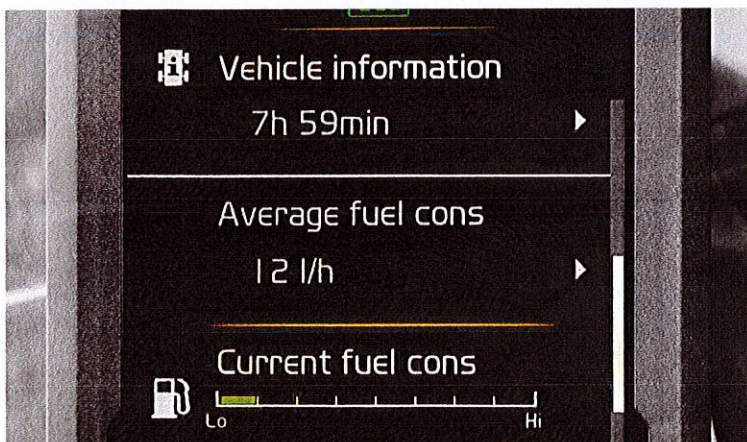
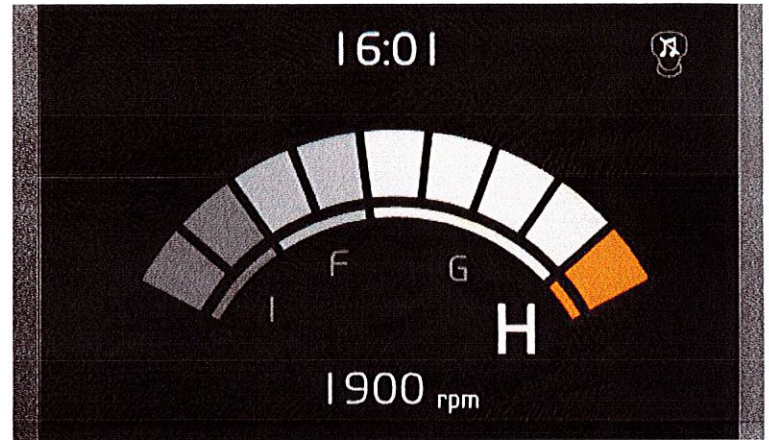
## Automatic idling system

Engine speed is reduced to idle when the controls are inactive for a pre-set amount of time (between 3 and 20 seconds), which reduces fuel consumption and noise for nearby workers.



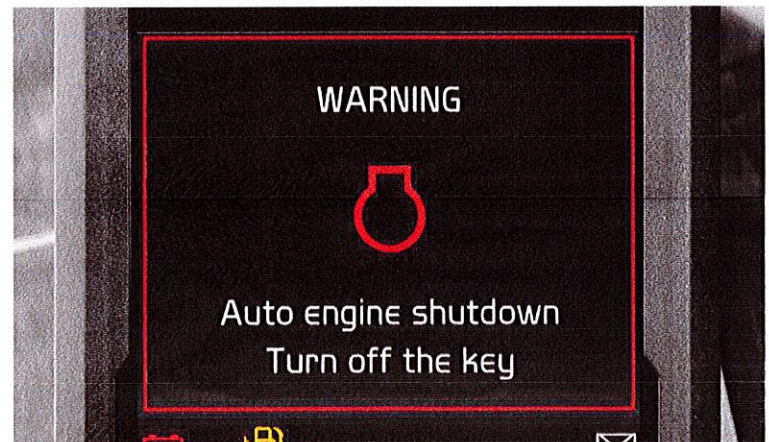
## Work modes

Volvo's integrated work mode system now includes the G4 mode for optimum fuel efficiency and machine performance. You can choose the best work mode for the task at hand – select from I (Idle), F (Fine), G (General) and H (Heavy).



## Eco-gauge

Eco-gauge is an added gauge bar that indicates momentary fuel consumption and can be reset through the display monitor. This will track fuel consumption under different applications.



## Auto-engine shut down

E-Series excavators feature automatic engine shutdown for when the machine is not being used. When the machine is motionless for five minutes, the engine will automatically turn off and reduce your running costs.





#### ECO mode

Volvo's unique ECO mode optimizes the hydraulic system to reduce flow and pressure losses – resulting in improved fuel efficiency without any loss of performance in most operating conditions. ECO mode is automatically selected but can be switched off via the keypad.





#### Human Machine Interface (HMI)

All machine interfaces – including the joysticks, keypad and LCD monitor – are ergonomically positioned and designed for optimum control and efficiency. For operator convenience and ease of use, the number of switches has been significantly reduced.

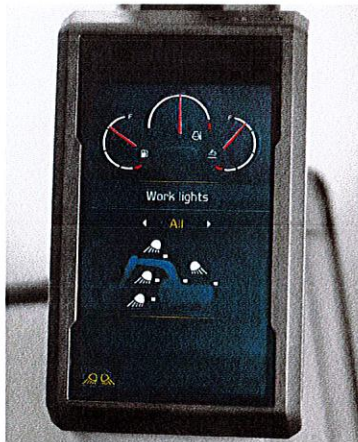


# Boost your productivity

It's a fact that operators work more efficiently when they're given the best tools for the job. That's why, on top of being a superior production machine, the EC250E/EC300E has an ergonomic design with ideally placed controls and switches. With built in comfort and optimized control, operators will work efficiently and productively all day long.

## Keypad + hot key

The optimally positioned keypad allows the operator to easily navigate through the LCD monitor and activate machine functions in a safe and comfortable way. The functionality of the camera, air conditioning and lights can be customized via the hot key – enabling the operator to select and save desired configurations.

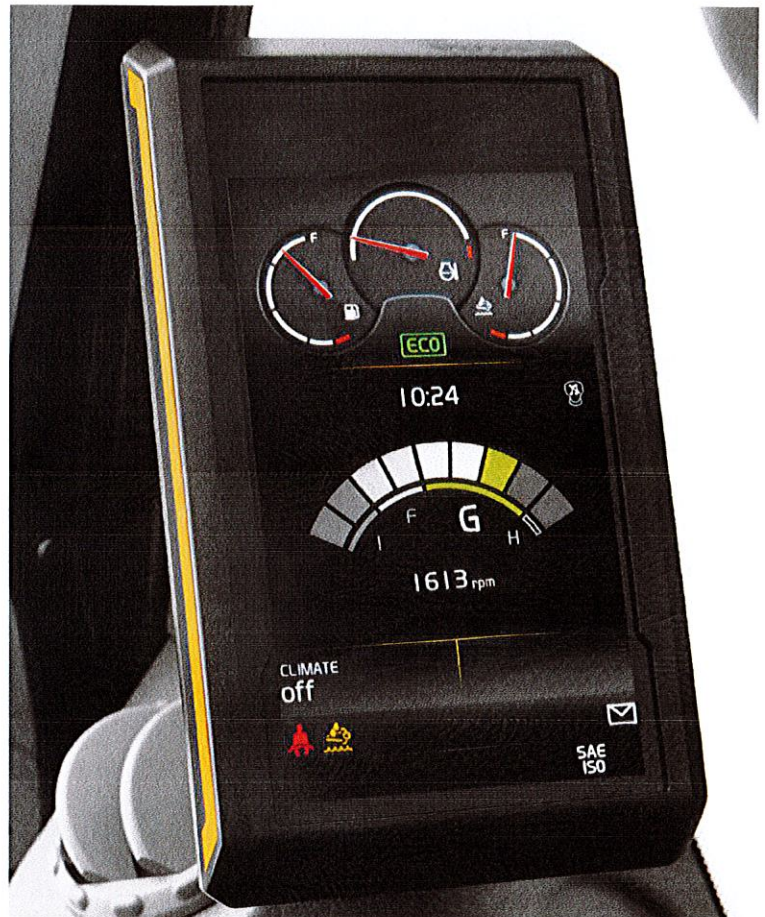


## Joystick + shortcut key

The windshield wipers, camera or audio mute function can be assigned to a shortcut switch located on the joystick. This allows the operator to easily control the selected function by simply pressing a switch.

## 8 inch LCD

The new, eight-inch non-glare colour LCD monitor displays machine status and information for easy operation. Through the use of a new remote keypad, the display enables the operator to easily navigate through various menus.



## Bluetooth®

Bluetooth and a hands-free function have been added that allows the operator to connect to wireless functions for easier connectivity and more convenience.



# Non-stop productivity

Experienced and skilled Volvo engineers have developed and rigorously tested Tier 4 Final engine systems that deliver the ultimate combination of high productivity and low fuel consumption. Benefit from Volvo's signature high torque at low rpm and experience superior performance and reduced fuel consumption.

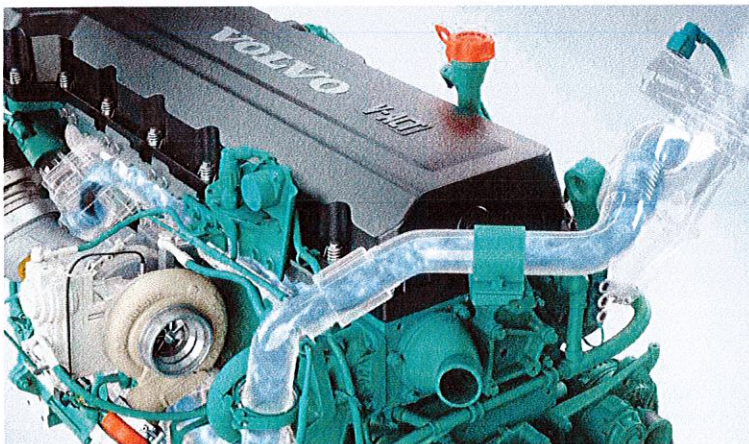
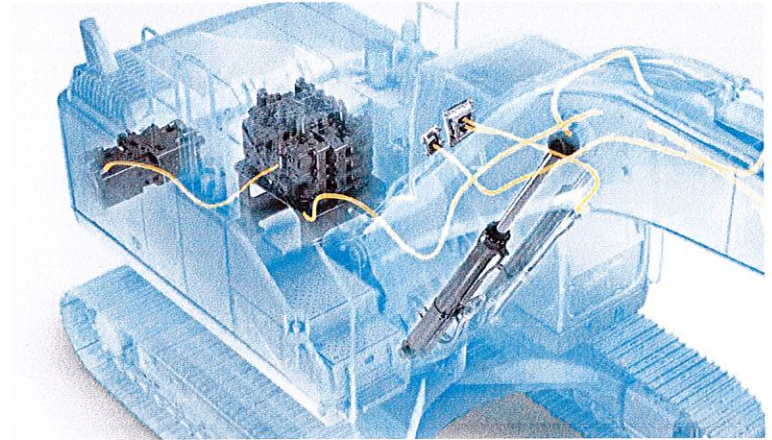
## Attachment management system

The attachment management system – controlled through the monitor – stores the settings for up to 20 different hydraulic attachments for ease of operation. Depending on the options configured, the management system can store rated flow and relieve pressure.



## Positive Control hydraulics + pump input torque

High pump flow combined with the electro-hydraulic control system creates a faster response and cycle time. In addition, the EC300E features increased pump input torque for a reduced cycle time.



## V-ACT (engine and pumps are matched to optimise performance)

It's the combination of the durable D8 Volvo engine and intelligent hydraulic system that makes all the difference. Boosting power while reducing both fuel consumption and emissions results in quicker cycle times and greater productivity.

## Boom float

With the boom float function the pump power for boom lowering can be saved or used for other functions, reducing your cycle time. Also, the grading operation can be made easier.

## Engine after treatment system

The After Treatment Control Module (ACM) automatically controls, monitors and diagnoses the after treatment system to secure emission regulation compliance.





#### Proportional two-pump flow

The proportional two-pump flow makes it easier for the operator to improve the machine's controllability for a higher quality grading finish. The ease of operation helps to get a quality job done quicker.





#### **Bolt-on wear plates**

At the arm end where the most movement and wear occurs, Volvo provides wear plates which are easily replaced in a matter of hours in the field – a service that can't be matched by its competitors.

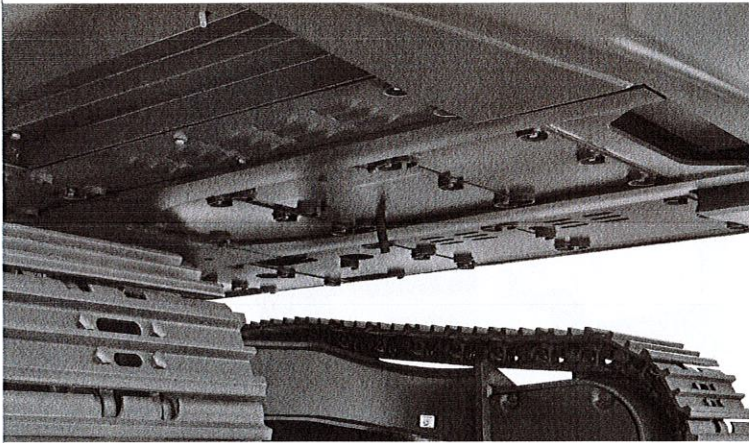


# Built to last

From quarries to mass excavation, this heavy-duty production machine has been built to work on tough job sites. Featuring a robust, reinforced structure and high quality welding, the EC250E/EC300E boast superior strength and durability. Experience reliability you can count on with Volvo.

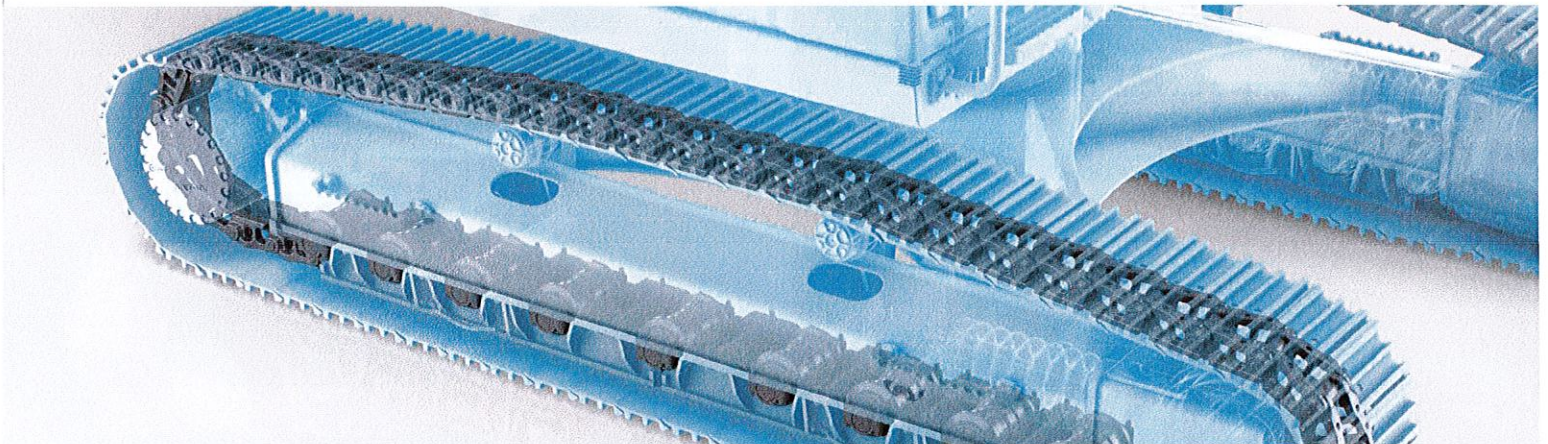
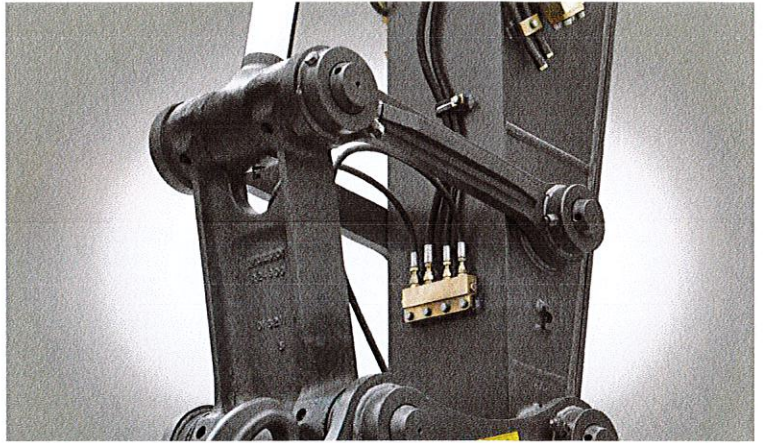
## HD superstructure undercover plating

The optional heavy-duty superstructure undercover protects components within the superstructure. For increased durability, heavy-duty undercover plates provide additional protection to the underside of the machine in tough applications – preventing damage from rock and debris.



## Re-enforced bucket linkage

A steel strip reinforces and supports the bucket linkage for added strength. It provides consistent long term durability even in the most severe applications.



## Robust undercarriage

The reinforced idler frame, track links and bottom rollers are built to withstand tougher conditions for improved durability and reliability in demanding applications.

## Robust track link

The machines feature reinforced track links for increased durability in tough applications.



# Up your uptime

At Volvo we believe that maintaining your machine should be as quick and easy as possible. That's why our designers and engineers have developed innovative methods to make maintenance easy. With large, wide opening compartment doors and grouped service points, checks will be carried out faster and you'll get the most out of every operating shift.

## Handrails & bolted on anti-slip plates

Multiple handrails and fold-able guardrails provide safe and easy access to the cab and superstructure. The bolted-on punched anti-slip plates provide superior grip and increased safety on board your machine. The fold-able guardrails is to minimize transportation height when it is folded.



## Sturdy doors and hinges

Volvo's design features rigid side doors with robust handles, hinges and locks for superior durability.



## Tool box

The large tool box storage fitted on the right side is very convenient for daily maintenance.





#### **Air compressor**

Volvo now offers an optional and unique air compressor system. The air compressor with air blower, fitted in the cab for easy access, is a powerful tool and can be used to clean the cab whenever necessary.

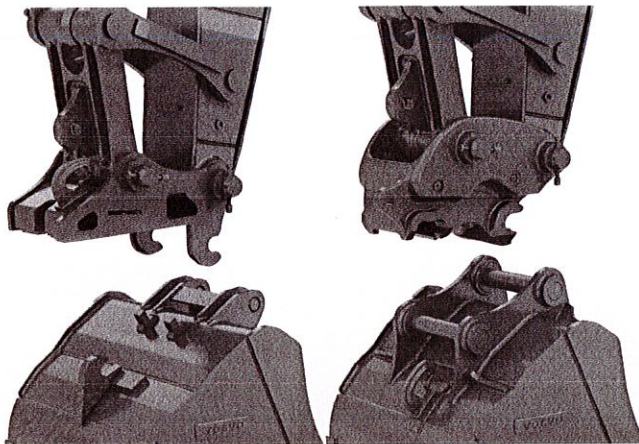
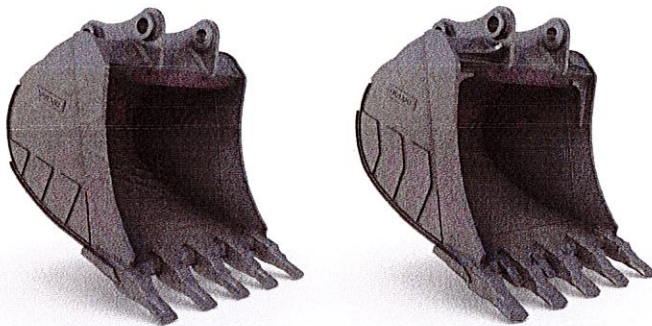


# Mix and match for a superior fit

Maximize your productivity and profitability with Volvo's EC250E/EC300E crawler excavators and a range of durable attachments. Increase your versatility, access more applications and perform a variety of tasks – all while experiencing faster cycle times and excellent control.

## Buckets – GP/HD/XD

Volvo's buckets are the perfect tool for digging and re-handling in all conditions from soft, medium and hard materials. Heavy-duty buckets are intended for productive digging in compact materials. All provide maximum productivity and long life and feature original Volvo wear components.

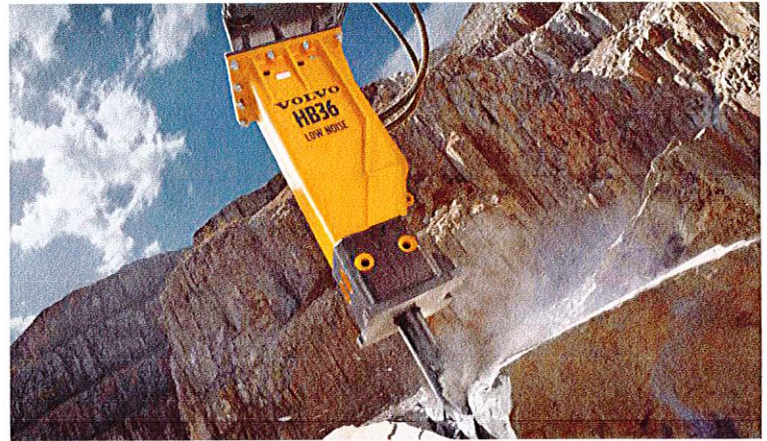


## Quick Coupler

Volvo offers a full range of quick couplers, including its dedicated S-type couplers, that eliminates a loss of break-out force and perfectly match Volvo's bucket range. The Volvo universal quick coupler picks up a variety of attachments from various manufacturers. All Volvo quick couplers meet the latest safety regulations.

## Breakers HB24, HB36

The HB-Series of hydraulic breakers are optimized to the specific weights of Volvo machines and tailored to Volvo quick couplers for swift, safe and simple attachment changes. They are available with a full assortment of tools.



## Tilt Rotator\*

Volvo's tilt rotator can be ordered factory installed with multifunctional joysticks and color display that's fully integrated into the machine's system. The new series of Volvo XD excavator buckets are perfectly matched to the factory installed tilt rotator.

\*EC250E only





#### Matched attachments

Volvo's durable attachments have been purpose-built to work in perfect harmony with Volvo machines, forming one solid, reliable unit. With functions and properties ideally matched, Volvo attachments are an integrated part of the excavator for which they're intended.



# Optimize your options



## ECO mode

Volvo's unique ECO mode improves fuel efficiency without any loss of performance.



## Proportional two-pump flow

The proportional two-pump flow makes it easier for the operator to improve the machine's controllability for a higher quality grading finish. The ease of operation helps to get a quality job done quicker.

## Booms and arms

To achieve the best performance, select the most suitable boom and arm configuration combination for your requirements.



## Bolt-on wear plates

At the arm end where the most movement and wear occurs, Volvo provides wear plates which are easily replaced in a matter of hours in the field – a service that can't be matched by its competitors.



## Matched attachments

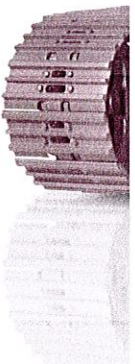
Volvo's durable attachments have been purpose-built to work in perfect harmony with Volvo machines, forming one solid, reliable unit. With functions and properties ideally matched, Volvo attachments are an integrated part of the excavator for which they're intended.

## Diesel Exhaust Fluid (DEF)

Volvo offers a total DEF solution that is quality assured, cost efficient and easily accessible. Contact your Volvo dealer for more information.

## Demolition package

Volvo's factory fit demolition package offers ultimate protection for the machine.







#### Human Machine Interface (HMI)

All machine interfaces are ergonomically positioned and designed for optimum control and efficiency.

#### Bluetooth®

Bluetooth multimedia and hands-free functions have been added, allowing the operator to connect to wireless functions for increased comfort and safety.



#### Air compressor

Volvo now offers an optional and unique air compressor system. The air compressor with air blower, fitted in the cab for easy access, is a powerful tool and can be used to clean the cab whenever necessary.

#### Automatic engine shutdown

E-Series excavators feature optional automatic engine shutdown for when the machine is idle for a pre-set period.

#### Handrails and anti-slip plates

Punched anti-slip plates, multiple handrails and fold-able guardrails provide safe and easy access to the machine.

#### After treatment system

The automatic regeneration process takes place without interrupting machine operation, performance or productivity.

#### Robust track link

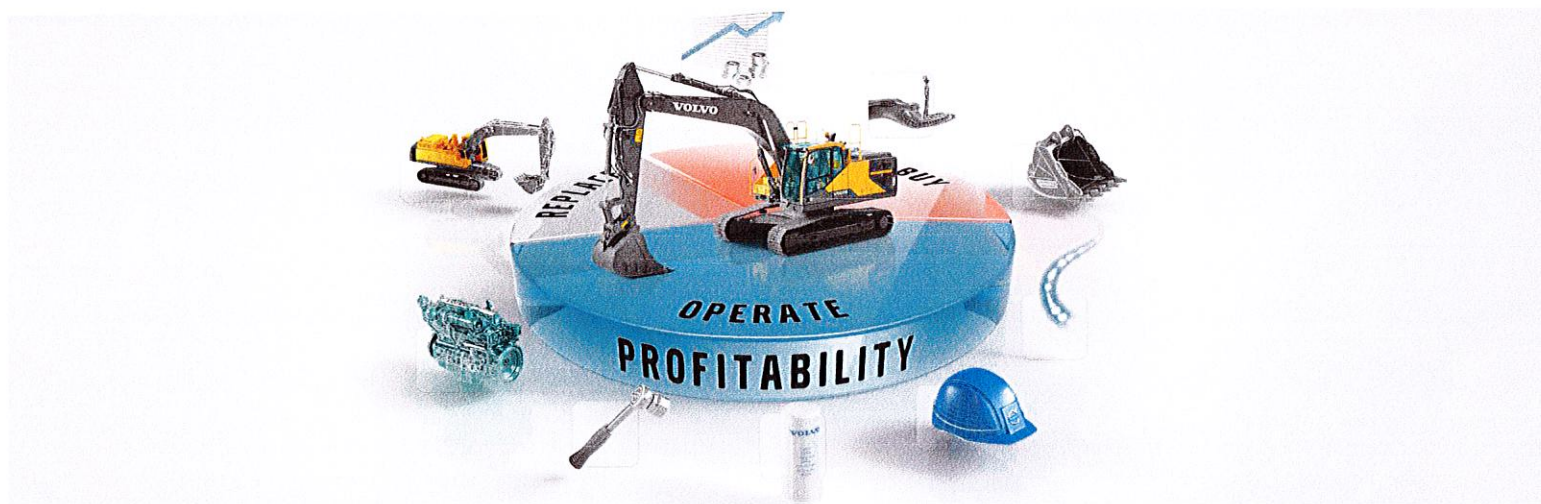
The excavators feature reinforced track links for improved durability in tough applications.





# Adding value to your business

Being a Volvo customer means having a complete set of services at your fingertips. Volvo can offer you a long-term partnership, protect your revenue and provide a full range of customer solutions using high quality parts, delivered by passionate people. Volvo is committed to increasing the positive return on your investment and maximising uptime.



## Complete Solutions

Volvo has the right solution for you. So why not let us provide all your needs throughout the whole life

cycle of your machine? By listening to your requirements, we can reduce your total cost of ownership and increase your revenue.



## Genuine Volvo Parts

Our attention to detail is what makes us stand out. This proven concept acts as a solid investment in your machine's future. Parts are extensively tested and approved because every part is vital for uptime and performance. Only by using Genuine Volvo Parts, can you be sure that your machine retains the renowned Volvo quality.



## Service Network

In order to respond to your needs faster, a Volvo expert is on their way to your job site from one of our Volvo facilities. With our extensive infrastructure of technicians, workshops and dealers, Volvo has a comprehensive network to fully support you using local knowledge and global experience.







# Volvo EC250E, EC300E in detail

## Engine

The latest generation, Volvo engine Tier 4f emissions compliant diesel engine fully meets the demands of the latest, emissions regulations. Featuring Volvo Advanced Combustion Technology (V-ACT), it is designed to deliver superior performance and fuel efficiency. The engine uses precise, high pressure fuel injectors, turbo charger and air-to-air intercooler, and electronic engine controls to optimize machine performance. Air Filter: 3-stage with precleaner. Automatic Idling System: Reduces engine speed to idle when the levers and pedals are not activated resulting in less fuel consumption and low cab noise levels.

### EC250E

Engine	Volvo	D8J
Max power at	r/min (r/s)	1,800 (30)
Net, ISO 9249/SAE J1349	kW (hp)	159 (213)
Gross, ISO 14396/SAE J1995	kW (hp)	160 (214)
Max torque	Nm (ft lbf)	1,110 (819)
at engine speed	r/min (r/s)	1,350 (22.5)
No. of cylinders		6
Displacement	l (in <sup>3</sup> )	7.8 (473)
Bore	mm (in)	110 (4.33)
Stroke	mm (in)	136 (5.35)

### EC300E

Engine	Volvo	D8J
Max power at	r/min (r/s)	1,800 (30)
Net, ISO 9249/SAE J1349	kW (hp)	179 (240)
Gross, ISO 14396/SAE J1995	kW (hp)	180 (241)
Max torque	Nm (ft lbf)	1,238 (913)
at engine speed	r/min (r/s)	1,350 (22.5)
No. of cylinders		6
Displacement	l (in <sup>3</sup> )	7.8 (473)
Bore	mm (in)	110 (4.33)
Stroke	mm (in)	136 (5.35)

## Electrical system

High-capacity electrical system that is well protected. Waterproof double-lock harness plugs are used to secure corrosion-free connections. The main relays and solenoid valves are shielded to prevent damage. The master switch is standard. Contronics provides advanced monitoring of machine functions and important diagnostic information.

		EC250E	EC300E
Voltage	V	24	24
Batteries	V	2 x 12	2 x 12
Battery capacity	Ah	200	200
Alternator	V/A	28/80	28/110

## Service Refill

		EC250E	EC300E
Fuel tank	l (gal)	470 (124)	470 (124.2)
DEF/AdBlue® tank	l (gal)	53 (14)	53 (14)
Hydraulic system, total	l (gal)	320 (85)	400 (105.7)
Hydraulic tank	l (gal)	207 (55)	207 (54.7)
Engine oil	l (gal)	32 (8.5)	32 (8.5)
Engine coolant	l (gal)	41 (10.8)	41 (10.8)
Slew reduction unit	l (gal)	5.9 (1.6)	6.1 (1.6)
Travel reduction unit	l (gal)	2 x 5 (2 x 1.3)	2 x 6 (2 x 1.6)

## Swing system

The swing system uses an axial piston motors, driving a planetary gearbox for maximum torque. An automatic holding brake and anti-rebound valve are standard.

		EC250E	EC300E
Max. slew speed	r/min	11.9	10.7
Max. slew torque	kNm (ft lbf)	91.7 (67,630)	110.9 (81,790)

## Travel System

Each track is powered by an automatic two-speed shift travel motor. The track brakes are multi-disc, spring-applied and hydraulic released. The travel motor, brake and planetary gears are well protected within the track frame.

		EC250E	EC300E
Max. drawbar pull	kN (lbf)	217 (48,790)	248 (55,753)
Max. travel speed (low)	km/h(mi/h)	3.5 (2.2)	3.4 (2.1)
Max. travel speed (high)	km/h(mi/h)	5.5 (3.4)	5.4 (3.4)
Gradeability	°	35	35

## Undercarriage

The undercarriage has a robust X-shaped frame. Greased and sealed track chains are standard.

		EC250E	EC300E
Track shoes		2 x 51	2 x 50
Link pitch	mm (in)	190 (7.5)	203 (8)
Shoe width, triple grouser	mm (in)	600/700/800/900 (24/28/32/36)	600/700/800/900 (24/28/32/36)
Shoe width, triple grouser (HD)	mm (in)	600 (24)	600 (24)
Shoe width, double grouser	mm (in)	600/700 (24/28)	700 (28)
Bottom rollers		2 x 9	2 x 9
Top rollers		2 x 2	2 x 2



### Hydraulic system

The new electro-hydraulic system and new MCV (main control valve) use intelligent technology to control on-demand flow for high-productivity, high-digging capacity and excellent fuel consumption.

The following important functions are included in the system for optimum performance:

Summation system: Combines the flow of both hydraulic pumps to ensure quick cycle times and high productivity.

Boom priority: Gives priority to the boom operation for faster raising when loading or performing deep excavations.

Arm priority: Gives priority to the arm operation for faster cycle times in leveling and for increased bucket filling when digging.

Swing priority: Gives priority to swing functions for faster simultaneous operations.

Regeneration system: Prevents cavitation and provides flow to other movements during simultaneous operations for maximum productivity.

Power boost: All digging and lifting forces are increased.

Holding valves: Boom and arm holding valves prevent the digging equipment from creeping.

	EC250E	EC300E
Main pump, Type 2 x variable displacement axial piston pumps		
Maximum flow l/min (gal/min)	2x240 (2 x 63)	2x263 (2x69)
Pilot pump, Type Gear pump		
Maximum flow l/min (gal/min)	18 (4.8)	18 (4.8)

### Hydraulic Motors

	EC250E	EC300E
Travel: Variable displacement axial piston motor with mechanical brake		
Slew: Fixed displacement axial piston motor with mechanical brake		
Relief value setting pressure		
Implement MPa (psi)	33.3/36.3 (4,840/5,260)	33.3/36.3 (4,830/5,265)
Travel circuit MPa (psi)	36.3 (5,260)	33.3 (4,830)
Slew circuit MPa (psi)	27.9 (4,050)	27.9 (4,047)
Pilot circuit MPa (psi)	3.9 (570)	3.9 (566)

### Hydraulic Cylinders

	EC250E	EC300E
Mono boom	2	2
Bore x Stroke ø x mm (ø x in)	135 x 1 345 (5.3 x 53)	140 x 1 480 (5.5 x 58.3)
2 piece boom	1	1
Bore x Stroke ø x mm (ø x in)	160 x 1 230 (6.3 x 48)	170 x 1 300 (6.7 x 51.2)
Arm	1	1
Bore x Stroke ø x mm (ø x in)	140 x 1 665 (5.5 x 65.6)	150 x 1 745 (5.9 x 68.7)
Bucket	1	1
Bore x Stroke ø x mm (ø x in)	130 x 1 150 (5.1 x 45.3)	140 x 1 140 (5.5 x 44.9)
Bucket for LR	1	1
Bore x Stroke ø x mm (ø x in)	100 x 865 (3.9 x 34.1)	100 x 865 (3.9 x 34.1)

### Cab

The operator's cab has easy access via a wide door opening. The cab is supported on hydraulic dampening mounts to reduce shock and vibration levels. These along with sound absorbing lining provide low noise levels. The cab has excellent all-round visibility. The front windshield can easily slide up into the ceiling, and the lower front glass can be removed and stored in the side door.

Integrated air-conditioning and heating system: The pressurized and filtered cab air is supplied by an automatically-controlled fan. The air is distributed throughout the cab from 14 vents.

Ergonomic operator's seat: The adjustable seat and joystick console move independently to accommodate the operator. The seat has nine different adjustments plus a seat belt for the operator's comfort and safety.

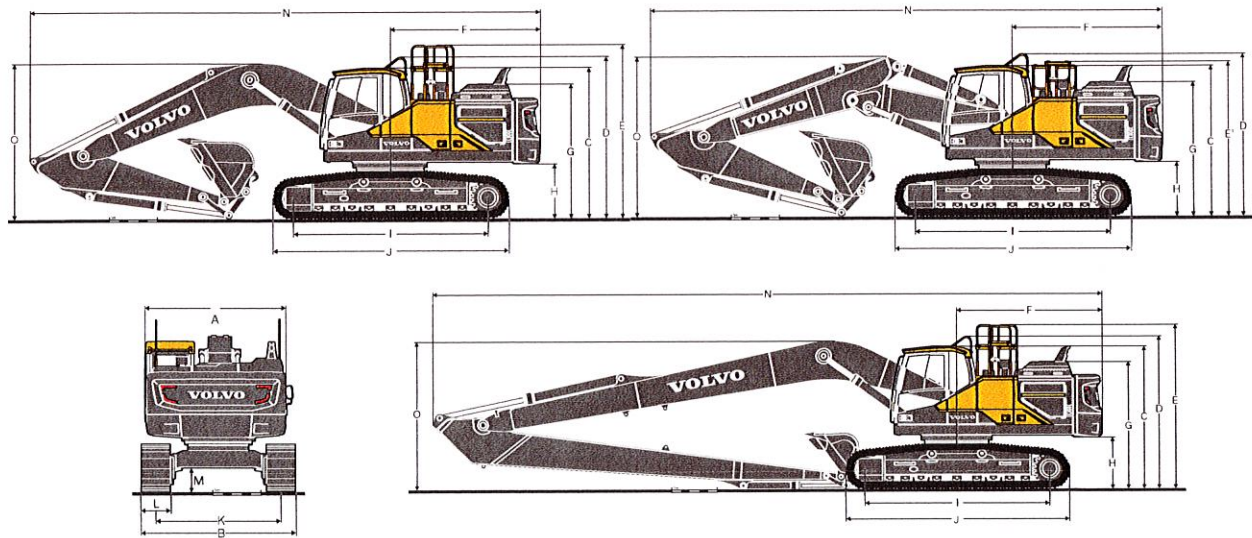
### Sound Level

	EC250E	EC300E
Sound pressure level in cab according to ISO 6396		
L <sub>PA</sub> (standard) dB	70	70
L <sub>PA</sub> (tropical) dB	71	71
External sound level according to ISO 6395 and EU Noise Directive 2000/14/EC		
L <sub>WA</sub> (standard) dB	103	104
L <sub>WA</sub> (tropical) dB	104	105



# Specifications

## DIMENSIONS



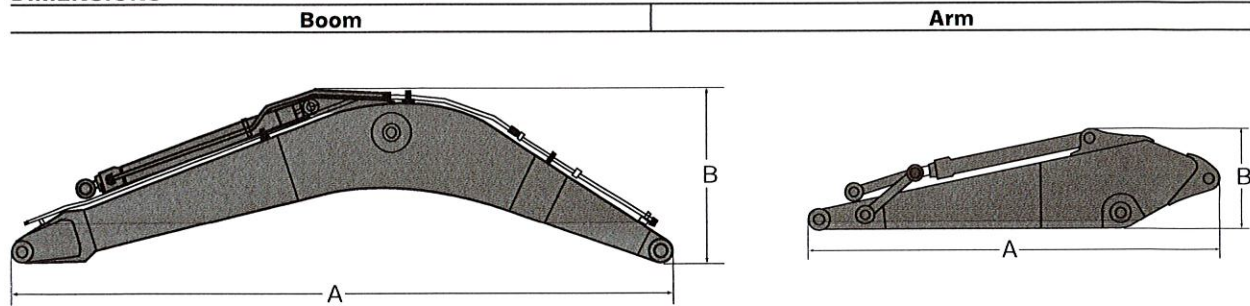
Description	Unit	EC250EL						EC250ELR	
Boom	m, ft in	6, 19'8" mono or 5.95, 19'6" 2-piece						10.2, 33'6"	
Arm	m ft in	2.5	8'2"	2.97	9'9"	3.6	11'10"	7.85	25'9"
A. Overall width of upper structure	mm ft in	2 890	9'6"	2 890	9'6"	2 890	9'6"	2 890	9'6"
B. Overall width	mm ft in	3 190	10'6"	3 190	10'6"	3 190	10'6"	3 190	10'6"
C. Overall height of cab	mm ft in	3 050	10'1"	3 050	10'1"	3 050	10'1"	3 050	10'1"
D. Overall height of handrail	mm ft in	3 265	10'9"	3 265	10'9"	3 265	10'9"	3 265	10'9"
E. Overall height of guardrail (Unfolded)	mm ft in	3 510	11'7"	3 510	11'7"	3 510	11'7"	3 510	11'7"
E'. Overall height of guardrail (Folded)	mm ft in	3 115	10'3"	3 115	10'3"	3 115	10'3"	3 115	10'3"
F. Tail swing radius	mm ft in	3 070	10'1"	3 070	10'1"	3 070	10'1"	3 150	10'5"
G. Overall height of engine hood	mm ft in	2 710	8'11"	2 710	8'11"	2 710	8'11"	2 710	8'11"
H. Counterweight clearance *	mm ft in	1 040	3'5"	1 040	3'5"	1 040	3'5"	1 040	3'5"
I. Tumbler length	mm ft in	3 850	12'8"	3 850	12'8"	3 850	12'8"	3 850	12'8"
J. Track length	mm ft in	4 650	15'4"	4 650	15'4"	4 650	15'4"	4 650	15'4"
K. Track gauge	mm ft in	2 590	8'6"	2 590	8'6"	2 590	8'6"	2 590	8'6"
L. Shoe width	mm ft in	600	24"	600	24"	600	24"	600	24"
M. Min. ground clearance *	mm ft in	470	1'7"	470	1'7"	470	1'7"	470	1'7"
N. Overall length	mm ft in	10 310	33'10"	10 230	33'7"	10 300	33'10"	14 520	47'8"
N'. Overall length	mm ft in	10 260	33'8"	10 230	33'7"	10 230	33'7"	-	-
O. Overall height of boom	mm ft in	3 330	11'	3 110	10'3"	3 330	11'	3 080	10'2"
O'. Overall height of boom	mm ft in	3 260	10'9"	3 180	10'6"	3 410	11'3"	-	-
Description	Unit	EC300EL						EC300ELR	
Boom	m, ft in	6.2, 20'4" mono or 6.2, 20'4" 2-piece						10.2, 33'6"	
Arm	m ft in	2.55	8'4"	3.05	10'0"	3.7	12'2"	7.9	25'11"
A. Overall width of upper structure	mm ft in	2 890	9'6"	2 890	9'6"	2 890	9'6"	2 890	9'6"
B. Overall width	mm ft in	3 190	10'6"	3 190	10'6"	3 190	10'6"	3 190	10'6"
C. Overall height of cab	mm ft in	3 110	10'3"	3 110	10'3"	3 110	10'3"	3 110	10'3"
D. Overall height of handrail	mm ft in	3 325	10'11"	3 325	10'11"	3 325	10'11"	3 325	10'11"
E. Overall height of guardrail (Unfolded)	mm ft in	3 570	11'9"	3 570	11'9"	3 570	11'9"	3 570	11'9"
E'. Overall height of guardrail (Folded)	mm ft in	3 175	10'5"	3 175	10'5"	3 175	10'5"	3 175	10'5"
F. Tail swing radius	mm ft in	3 120	10'3"	3 120	10'3"	3 120	10'3"	3 200	10'6"
G. Overall height of engine hood	mm ft in	2 770	9'2"	2 770	9'2"	2 770	9'2"	2 770	9'2"
H. Counterweight clearance *	mm ft in	1 100	3'8"	1 100	3'8"	1 100	3'8"	1 100	3'8"
I. Tumbler length	mm ft in	4 015	13'3"	4 015	13'3"	4 015	13'3"	4 015	13'3"
J. Track length	mm ft in	4 870	16'	4 870	16'	4 870	16'	4 870	16'
K. Track gauge	mm ft in	2 590	8'6"	2 590	8'6"	2 590	8'6"	2 590	8'6"
L. Shoe width	mm ft in	600	24"	600	24"	600	24"	600	24"
M. Min. ground clearance *	mm ft in	480	1'7"	480	1'7"	480	1'7"	480	1'7"
N. Overall length	mm ft in	10 610	34'10"	10 510	34'6"	10 550	34'8"	14 610	48'
N'. Overall length	mm ft in	10 600	34'10"	10 540	34'7"	10 540	34'7"	-	-
O. Overall height of boom	mm ft in	3 480	11'6"	3 350	11'	3 580	11'9"	3 230	10'8"
O'. Overall height of boom	mm ft in	3 360	11'1"	3 300	10'10"	3 530	11'7"	-	-

\* Without shoe grouser

<sup>1</sup> 2-piece boom



## DIMENSIONS



EC250E												
Description	Unit		mono		mono		2-piece		Long-Reach		mono	
Boom	m	In	6.0 GP	19'8"	6.0 HD	19'8"	5.95	19'6"	10.2	33'6"	6.2 GP	20'4"
Length	mm	In	6 210	20'4"	6 210	20'4"	6 160	20'3"	10 410	34'2"	6 430	21'1"
Height	mm	In	1 630	5'4"	1 630	5'4"	1 100	3'7"	1 525	5'0"	1 680	5'6"
Width	mm	In	740	2'5"	740	2'5"	740	2'5"	740	2'5"	770	2'6"
Weight	kg	lb	2 180	4,810	2 360	5,200	2 840	6,260	3 010	6,640	2 610	5,760

EC300E												
Description	Unit		mono		2-piece		Long-Reach					
Boom	m	In	6.2 HD	20'4"	6.2	20'4"	10.2	33'6"				
Length	mm	In	6 430	21'1"	6 430	21'1"	10 430	34'3"				
Height	mm	In	1 680	5'6"	1 590	5'3"	1 620	5'4"				
Width	mm	In	770	2'6"	770	2'6"	770	2'6"				
Weight	kg	lb	2 810	6,200	3 450	7,610	3 410	7,520				

\* Includes cylinder, piping and pin, excludes boom cylinder pin

EC250E												
Description	Unit		2.5 HD	8'2"	2.97 GP	9'9"	2.97 HD	9'9"	3.6 GP	11'10"	7.85 LR	25'9"
Arm	m	In	3 590	11'9"	4 060	13'4"	4 060	13'4"	4 730	15'6"	9 000	29'6"
Length	mm	In	3 590	11'9"	4 060	13'4"	4 060	13'4"	4 730	15'6"	9 000	29'6"
Height	mm	In	1 000	3'3"	1 000	3'3"	1 000	3'3"	1 000	3'3"	900	2'11"
Width	mm	In	500	1'8"	500	1'8"	500	1'8"	500	1'8"	480	1'7"
Weight	kg	lb	1 360	3000	1 340	2950	1 430	3150	1 470	3240	1 720	3,790

EC300E												
Description	Unit		2.55 HD	8'4"	3.05 GP	10'0"	3.05 HD	10'0"	3.7 GP	12'2"	7.9 LR	25'11"
Arm	m	In	3 710	12'2"	4 150	13'7"	4 150	13'7"	4 800	15'9"	9 050	29'8"
Length	mm	In	3 710	12'2"	4 150	13'7"	4 150	13'7"	4 800	15'9"	9 050	29'8"
Height	mm	In	1 010	3'4"	1 010	3'4"	1 010	3'4"	1 050	3'5"	1 050	3'5"
Width	mm	In	545	1'9"	545	1'9"	545	1'9"	545	1'9"	450	1'6"
Weight	kg	lb	1 530	3370	1 530	3370	1 590	3510	1 660	3660	1 730	3810

\* Includes cylinder, linkage and pin



# Specifications

## WORKING RANGES

Description	Unit	EC250EL						EC250ELR	
Boom	m, ft in							10.2	
Arm	m ft in	2.5	8'2"	2.97	9'9"	3.6	11'10"	7.85	25'9"
A. Max. digging reach	mm ft in	9 960	32'9"	10 340	34'	10 810	35'6"	18 300	60'1"
B. Max. digging reach on ground	mm ft in	9 770	32'1"	10 160	33'4"	10 640	34'11"	18 200	59'9"
C. Max. digging depth	mm ft in	6 590	21'8"	7 060	23'2"	7 690	25'3"	14 350	47'1"
D. Max. digging depth (2.44 m level)	mm ft in	6 370	20'11"	6 850	22'6"	7 470	24'7"	14 230	46'9"
E. Max. vertical wall digging depth	mm ft in	5 800	19'1"	6 070	19'11"	6 390	21'	12 930	42'6"
F. Max. cutting height	mm ft in	9 620	31'7"	9 690	31'10"	9 650	31'8"	14 890	48'11"
G. Max. dumping height	mm ft in	6 610	21'9"	6 710	22'1"	6 730	22'1"	12 580	41'4"
H. Min. front swing radius	mm ft in	3 910	12'10"	3 890	12'10"	3 890	12'10"	5 720	18'10"

## DIGGING FORCES WITH DIRECT FIT BUCKET

Bucket radius		mm ft in	1 537	5'1"	1 537	5'1"	1 537	5'1"	1 537	5'1"
Breakout force - bucket	Normal	SAE J1179	kN lb	152 34,270	152 34,270	152 34,270	152 34,270	152 34,270	68.6	15,440
	Power boost	SAE J1179	kN lb	166 37,290	166 37,290	166 37,290	166 37,290	166 37,290	-	-
	Normal	ISO 6015	kN lb	171 38,430	171 38,430	171 38,430	171 38,430	171 38,430	77.8	17,490
	Power boost	ISO 6015	kN lb	186 41,810	186 41,810	186 41,810	186 41,810	186 41,810	-	-
Tearout force - dipper arm	Normal	SAE J1179	kN lb	133 29,940	115 25,890	103 23,130	103 23,130	103 23,130	44.1	9,920
	Power boost	SAE J1179	kN lb	145 32,590	125 28,180	112 25,170	112 25,170	112 25,170	-	-
	Normal	ISO 6015	kN lb	137 30,850	118 26,550	105 23,640	105 23,640	105 23,640	44.7	10,050
	Power boost	ISO 6015	kN lb	149 33,560	129 28,890	114 25,720	114 25,720	114 25,720	-	-
Rotation angle, bucket		°	178		178		178		178	

## WORKING RANGES

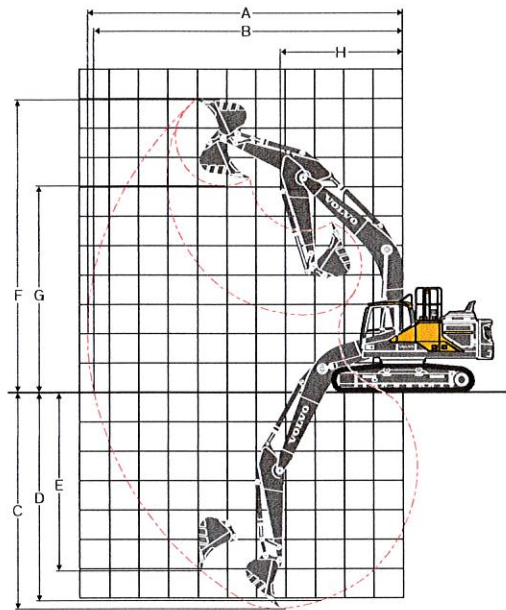
Description	Unit	EC300EL						EC300ELR	
Boom	m, ft in							10.2	
Arm	m ft in	2.55	8'4"	3.05	10'0"	3.7	12'2"	7.9	25'11"
A. Max. digging reach	mm ft in	10 180	33'5"	10 710	35'2"	11 310	37'2"	18 590	61'
B. Max. digging reach on ground	mm ft in	9 970	32'9"	10 520	34'7"	11 130	36'7"	18 480	60'8"
C. Max. digging depth	mm ft in	6 840	22'6"	7 340	24'1"	7 990	26'3"	14 750	48'5"
D. Max. digging depth (2.44 m level)	mm ft in	6 600	21'8"	7 150	23'6"	7 830	25'9"	14 650	48'1"
E. Max. vertical wall digging depth	mm ft in	5 320	17'6"	6 080	20'	6 680	21'11"	13 630	44'9"
F. Max. cutting height	mm ft in	9 560	31'5"	9 980	32'9"	10 260	33'8"	14 940	49'1"
G. Max. dumping height	mm ft in	6 680	21'11"	7 040	23'2"	7 330	24'1"	12 600	41'5"
H. Min. front swing radius	mm ft in	4 220	13'11"	4 180	13'9"	4 240	13'11"	6 190	20'4"

## DIGGING FORCES WITH DIRECT FIT BUCKET

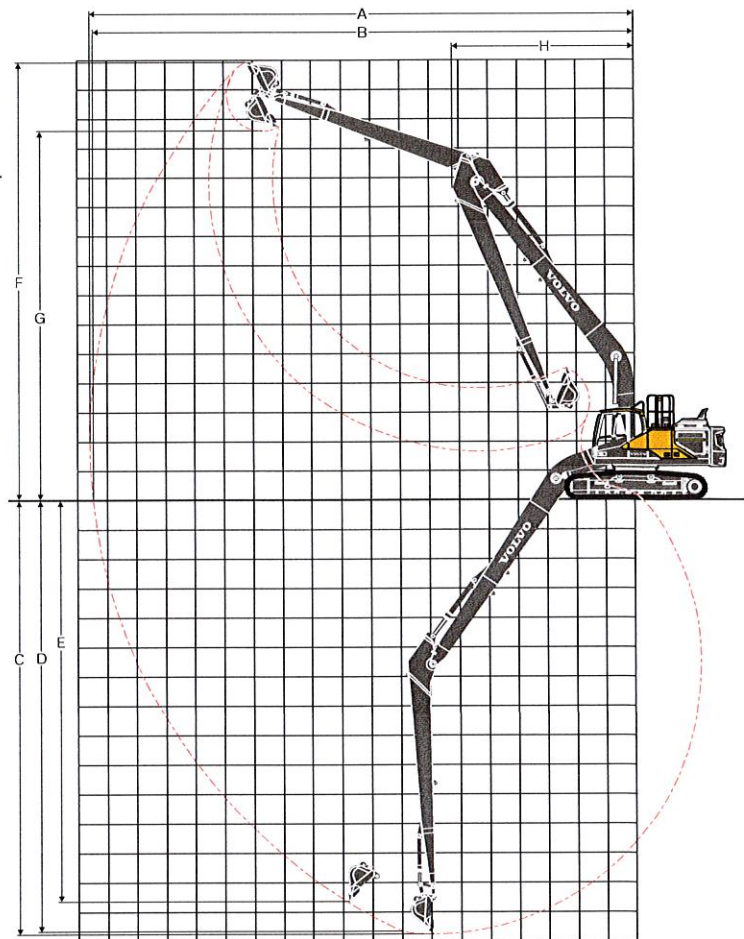
Bucket radius		mm ft in	1 600	5'3"	1 600	5'3"	1 600	5'3"	1 600	5'3"
Breakout force - bucket	Normal	SAE J1179	kN lb	168 37,660	168 37,660	168 37,660	168 37,660	168 37,660	69.1	15,520
	Power boost	SAE J1179	kN lb	182 40,970	182 40,970	182 40,970	182 40,970	182 40,970	-	-
	Normal	ISO 6015	kN lb	188 42,250	188 42,250	188 42,250	188 42,250	188 42,250	80.3	18,060
	Power boost	ISO 6015	kN lb	205 45,970	205 45,970	205 45,970	205 45,970	205 45,970	-	-
Tearout force - dipper arm	Normal	SAE J1179	kN lb	157 35,210	132 29,570	115 25,890	115 25,890	115 25,890	51.3	11,530
	Power boost	SAE J1179	kN lb	170 38,320	143 32,170	125 28,180	125 28,180	125 28,180	-	-
	Normal	ISO 6015	kN lb	161 36,250	135 30,300	118 26,420	118 26,420	118 26,420	51.8	11,640
	Power boost	ISO 6015	kN lb	176 39,450	147 32,960	128 28,750	128 28,750	128 28,750	-	-
Rotation angle, bucket		°	179		179		179		179	



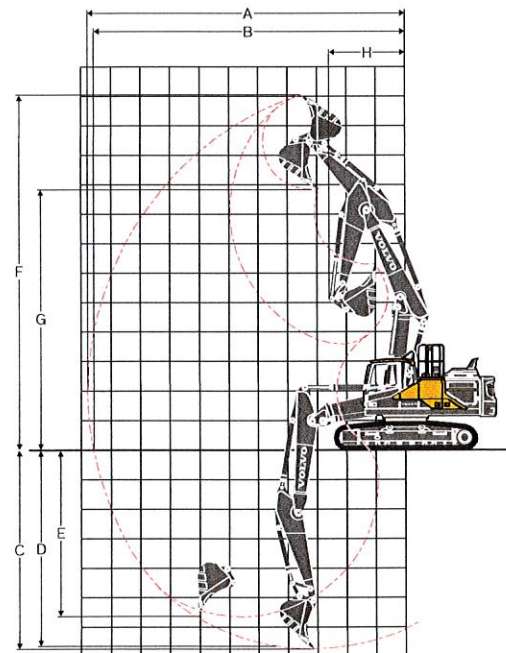
### Machine with mono boom



### Machine Long-Reach boom



### Machine with 2-piece boom





# Specifications

GROUND PRESSURE												
Description	Shoe width		Operating weight		Ground pressure		Overall width		Operating weight		Ground pressure	
	mm	in	kg	lb	kPa	psi	mm	in	kg	lb	kPa	psi
<b>EC250E</b>												
			EC250E with L undercarriage, 6.0m (19'8") boom, 2.97m (9'9") arm, 1 197kg (2,640lb) bucket, 4 250kg (9,370lb) counterweight					EC250E with L undercarriage, 6.0m (19'8") HD boom, 2.97m (9'9") HD arm, 1 197kg (2,640lb) bucket, 4 250kg (9,370lb) counterweight				
Triple grouser	600	24	25 590	56,430	50.6	7.3	3 190	10'6"	25 760	56,800	50.9	7.4
	700	28	25 890	57,090	43.8	6.4	3 290	10'10"	26 070	57,480	44.1	6.4
	800	32	26 190	57,750	38.8	5.6	3 390	11'1"	26 360	58,120	39.1	5.7
	900	36	26 490	58,410	34.9	5.1	3 490	11'5"	26 670	58,810	35.1	5.1
Triple grouser(HD)	600	24	25 820	56,930	51.0	7.4	3 190	10'6"	26 000	57,330	51.4	7.4
Double grouser	600	24	25 820	56,930	51.0	7.4	3 290	10'10"	25 990	57,310	51.3	7.4
	700	28	26 160	57,680	44.3	6.4	3 290	10'10"	26 340	58,080	44.6	6.5
			EC250E with L undercarriage, 5.95m (19'6") 2-piece boom, 2.97m (9'9") arm, 1 197kg (2,640lb) bucket, 4 250kg (9,370lb) counterweight					EC250E with L undercarriage, 6.0m (19'8") boom, 2.97m (9'9") arm, 1 197kg (2,640lb) bucket, 4 950kg (10,910lb) counterweight				
Triple grouser	600	24	26 180	57,730	51.7	7.5	3 190	10'6"	26 290	57,970	51.9	7.5
	700	28	26 480	58,390	44.8	6.5	3 290	10'10"	26 590	58,630	45.0	6.5
	800	32	26 780	59,050	39.7	5.8	3 390	11'1"	26 890	59,290	39.8	5.8
	900	36	27 090	59,730	35.7	5.2	3 490	11'5"	27 190	59,950	35.8	5.2
Triple grouser(HD)	600	24	26 420	58,260	52.2	7.6	3 190	10'6"	26 520	58,480	52.4	7.6
Double grouser	600	24	26 410	58,230	52.2	7.6	3 290	10'10"	26 520	58,480	52.4	7.6
	700	28	26 750	58,980	45.3	6.6	3 290	10'10"	26 860	59,230	45.5	6.6
			EC250E with L undercarriage, 6.0m (19'8") HD boom, 2 397m (9'9") HD arm, 1 197kg (2,640lb) bucket, 4 950kg (10,910lb) counterweight					EC250E with L undercarriage, 5.95m (19'6") 2-piece boom, 2.97m (9'9") arm, 1 197kg (2,640lb) bucket, 4 950kg (10,910lb) counterweight				
Triple grouser	600	24	26 460	58,340	52.3	7.6	3 190	10'6"	26 880	59,270	53.1	7.7
	700	28	26 770	59,030	45.3	6.6	3 290	10'10"	27 180	59,930	46.0	6.7
	800	32	27 060	59,670	40.1	5.8	3 390	11'1"	27 480	60,590	40.7	5.9
	900	36	27 370	60,350	36.0	5.2	3 490	11'5"	27 790	61,280	36.6	5.3
Triple grouser(HD)	600	24	26 700	58,870	52.7	7.6	3 190	10'6"	27 120	59,800	53.6	7.8
Double grouser	600	24	26 690	58,850	52.7	7.6	3 290	10'10"	27 110	59,780	53.6	7.8
	700	28	27 040	59,620	45.8	6.6	3 290	10'10"	27 450	60,530	46.5	6.7
			EC250E with LR undercarriage, 10.2m (33'6") LR boom, 7.85m (25'9") LR arm, 454kg (1,000lb) bucket, 6 200kg (13,670lb) counterweight									
Triple grouser	600	24	28 030	61,810	56.5	8.0	3 190	10'6"				
	800	32	28 630	63,130	43.3	6.2	3 390	11'1"				
	900	36	28 930	63,790	38.9	5.5	3 490	11'5"				
	600	24	28 270	62,340	55.8	8.1	3 190	10'6"				
Triple grouser(HD)	600	24	28 270	62,340	55.8	8.1	3 190	10'6"				
Description	Shoe width		Operating weight		Ground pressure		Overall width		Operating weight		Ground pressure	
	mm	in	kg	lb	kPa	psi	mm	in	kg	lb	kPa	psi
<b>EC300E</b>												
			EC300E with L undercarriage, 6.2m (20'4") boom, 3.05m (10') arm, 1 209kg (2,670lb) bucket, 5 100kg (11,250lb) counterweight					EC300E with L undercarriage, 6.2m (20'4") HD boom, 3.05m (10') HD arm, 1 209kg (2,670lb) bucket, 5 100kg (11,250lb) counterweight				
Triple grouser	600	24	29 350	64,720	56.6	8.2	3 190	10'6"	29 650	65,380	57.2	8.3
	700	28	29 910	65,950	49.5	7.2	3 290	10'10"	30 210	66,610	50.0	7.2
	800	32	30 290	66,790	43.8	6.4	3 390	11'1"	30 590	67,450	44.3	6.4
	900	36	30 660	67,610	39.4	5.7	3 490	11'5"	30 960	68,270	39.8	5.8
Triple grouser(HD)	600	24	29 550	65,160	57.0	8.3	3 190	10'6"	29 850	65,820	57.6	8.3
Double grouser	700	24	30 060	66,280	49.7	7.2	3 290	10'10"	30 360	66,940	50.2	7.3
			EC300E with L undercarriage, 6.2m (20'4") 2-piece boom, 3.05m (10') arm, 1 209kg (2,670lb) bucket, 5 100kg (11,250lb) counterweight					EC300E with L undercarriage, 6.2m (20'4") boom, 3.05m (10') arm, 1 209kg (2,670lb) bucket, 5 500kg (12,130lb) counterweight				
Triple grouser	600	24	30 230	66,660	58.3	8.5	3 190	10'6"	29 750	65,600	57.4	8.3
	700	28	30 790	67,890	50.9	7.4	3 290	10'10"	30 310	66,830	50.1	7.3
	800	32	31 170	68,730	45.1	6.5	3 390	11'1"	30 690	67,670	44.4	6.4
	900	36	31 540	69,550	40.6	5.9	3 490	11'5"	31 060	68,490	39.9	5.8
Triple grouser(HD)	600	24	30 430	67,100	58.7	8.5	3 190	10'6"	29 950	66,040	57.8	8.4
Double grouser	700	24	30 940	68,220	51.2	7.4	3 290	10'10"	30 460	67,160	50.4	7.3
			EC300E with L undercarriage, 6.2m (20'4") HD boom, 3.05m (10') HD arm, 1 209kg (2,670lb) bucket, 5 500kg (12,130lb) counterweight					EC300E with L undercarriage, 6.2m (20'4") 2-piece boom, 3.05m (10') arm, 1 209kg (2,670lb) bucket, 5 500kg (12,130lb) counterweight				
Triple grouser	600	24	30 050	66,260	58.0	8.4	3 190	10'6"	30 630	67,540	59.1	8.6
	700	28	30 610	67,500	50.6	7.3	3 290	10'10"	31 190	68,770	51.6	7.5
	800	32	30 990	68,330	44.8	6.5	3 390	11'1"	31 570	69,610	45.7	6.6
	900	36	31 360	69,150	40.3	5.8	3 490	11'5"	31 940	70,430	41.1	6.0
Triple grouser(HD)	600	24	30 250	66,700	58.4	8.5	3 190	10'6"	30 830	67,980	59.5	8.6
Double grouser	700	24	30 760	67,830	50.9	7.4	3 290	10'10"	31 340	69,100	51.8	7.5
			EC300E with LR undercarriage, 10.2m (33'6") LR boom, 7.9m (25'11") LR arm, 473kg (1,040lb) bucket, 6 800kg (14,990lb) counterweight									
Triple grouser	600	24	31 470	69,390	60.7	8.8	3 190	10'6"				
	800	32	32 400	71,440	46.9	6.8	3 390	11'1"				
	900	36	32 770	72,260	42.1	6.1	3 490	11'5"				
	600	24	31 670	69,830	61.1	8.9	3 290	10'10"				
Triple grouser(HD)	600	24	31 670	69,830	61.1	8.9	3 290	10'10"				



# **BUCKET SELECTION GUIDE**

Bucket type		Capacity		Cutting width		Weight		Teeth	EC250EL					
									6.0m(19'8") GP Boom			6.0m(19'8") HD Boom		
		600mm(24") shoe, 4 950kg(10910lb) counterweight							H2.5m(8'2")	G2.97m(9'9")	G3.6m(11'10")	H2.5m(8'2")	G2.97m(9'9")	G3.6m(11'10")
		m³	yd³	mm	ft/in	kg	lb							
Direct fit Buckets	General purpose	0.56	0.73	600	24	861	1899	3	C	C	C	C	C	C
		0.62	0.81	750	30	884	1950	3	C	C	C	C	C	C
		0.77	1.01	900	36	986	2 174	4	C	C	C	C	C	C
		1.14	1.49	1200	47	1 177	2 595	5	C	C	C	C	C	C
		1.32	1.73	1350	53	1 257	2 772	5	C	C	C	C	C	C
		1.51	1.98	1500	59	1 356	2 990	5	C	C	C	C	C	B
	Heavy duty	0.56	0.73	600	24	936	2 065	3	D	D	D	D	D	D
		0.62	0.81	750	30	967	2 131	3	D	D	D	D	D	D
		1.14	1.49	1200	47	1 298	2 862	5	D	D	D	D	D	D
		1.32	1.73	1350	53	1 384	3 051	5	D	D	D	D	D	D
		1.51	1.98	1500	59	1 480	3 264	5	D	C	B	D	C	B
		1.51	1.98	1500	59	1 455	3 208	5	D	C	B	D	C	B
Bucket type		Capacity		Cutting width		Weight		Teeth	EC250EL					
									5.95m(19'6") 2-piece Boom			600mm(24") shoe, 4 950kg(10910lb) counterweight		
		600mm(24") shoe, 4 950kg(10910lb) counterweight							H2.5m(8'2")	G2.97m(9'9")	G3.6m(11'10")			
		m³	yd³	mm	ft/in	kg	lb					EA		
Direct fit Buckets	General purpose	0.56	0.73	600	24	861	1899	3	C	C	C	C		
		0.62	0.81	750	30	884	1950	3	C	C	C	C		
		0.77	1.01	900	36	986	2 174	4	C	C	C	C		
		1.14	1.49	1200	47	1 177	2 595	5	C	C	C	C		
		1.32	1.73	1350	53	1 257	2 772	5	C	C	C	C		
		1.51	1.98	1500	59	1 356	2 990	5	C	C	B			
	Heavy duty	0.56	0.73	600	24	936	2 065	3	D	D	D	D		
		0.62	0.81	750	30	967	2 131	3	D	D	D	D		
		1.14	1.49	1200	47	1 298	2 862	5	D	D	D	D		
		1.32	1.73	1350	53	1 384	3 051	5	D	D	C			
		1.51	1.98	1500	59	1 480	3 264	5	D	C	B			
		1.51	1.98	1500	59	1 455	3 208	5	D	C	B			
Bucket type		Capacity		Cutting width		Weight		Teeth	EC300EL					
									6.2m(20'4") GP Boom			6.2m(20'4") HD Boom		
		600mm(24") shoe, 5 500kg(12125lb) counterweight							H2.55m(8'4")	G3.05m(10')	G3.7m(12'2")	H2.55m(8'4")	G3.05m(10')	G3.7m(12'2")
		m³	yd³	mm	ft/in	kg	lb							
Direct fit Buckets	General purpose	0.55	0.72	600	23	881	1942	3	D	D	D	D	D	D
		0.66	0.86	750	29	927	2 045	3	D	D	D	D	D	D
		0.77	1.01	900	35	996	2 195	4	D	D	D	D	D	D
		1.14	1.49	1200	47	1 187	2 617	5	D	D	D	D	D	D
		1.32	1.73	1350	53	1 267	2 794	5	D	D	D	D	D	D
		1.51	1.98	1500	59	1 365	3 010	5	D	D	B	D	D	C
	Heavy duty	0.55	0.72	600	23	954	2 103	3	D	D	D	D	D	D
		0.66	0.86	750	29	1 011	2 229	3	D	D	D	D	D	D
		1.14	1.49	1200	47	1 305	2 878	5	D	D	D	D	D	D
		1.32	1.73	1350	53	1 392	3 069	5	D	D	D	D	D	D
		1.51	1.98	1500	59	1 488	3 280	5	D	C	B	D	D	B
		1.51	1.98	1500	59	1 488	3 280	5	D	C	B	D	D	B
Bucket type		Capacity		Cutting width		Weight		Teeth	EC300EL					
									6.0m(19'8") GP Boom			600mm(24") shoe, 5 500kg(12125lb) counterweight		
		600mm(24") shoe, 5 500kg(12125lb) counterweight							H2.55m(8'4")	G3.05m(10')	G3.7m(12'2")			
		m³	yd³	mm	ft/in	kg	lb					EA		
Direct fit Buckets	General purpose	0.55	0.72	600	23	881	1942	3	D	D	D	D		
		0.66	0.86	750	29	927	2 045	3	D	D	D	D		
		0.77	1.01	900	35	996	2 195	4	D	D	D	D		
		1.14	1.49	1200	47	1 187	2 617	5	D	D	D	D		
		1.32	1.73	1350	53	1 267	2 794	5	D	D	D	D		
		1.51	1.98	1500	59	1 365	3 010	5	D	C	B			
	Heavy duty	0.55	0.72	600	23	954	2 103	3	D	D	D	D		
		0.66	0.86	750	29	1 011	2 229	3	D	D	D	D		
		1.14	1.49	1200	47	1 305	2 878	5	D	D	D	D		
		1.32	1.73	1350	53	1 392	3 069	5	D	D	C			
		1.51	1.98	1500	59	1 488	3 280	5	D	C	B			
		1.51	1.98	1500	59	1 488	3 280	5	D	C	B			

\*For long reach boom and arm configuration, Volvo recommends to use 0.52cum(0.68yd³) bucket for EC250E and 0.57cum(0.75 yd³) bucket for EC300E.

Please consult with your Volvo dealer for the proper match of buckets and attachments to suit the application.

The recommendations are given as a guide only, based on typical operation conditions.

Bucket capacity based on ISO 7451, heaped material with a 1:1 angle of repose.

X : Not recommended

Maximum material density			
	kg/m³	lb/yd³	
A	1 200 - 1 300	2,000 - 2,200	Coal, Caliche, Shale
B	1 400 - 1 600	2,300 - 2,700	Wet earth and clay, Limestone, Sandstone
C	1 700 - 1 800	2,800 - 3,100	Granite, Wet sand, Well blasted rock
D	> 1 900	> 3,200	Wet mud, Iron ore



# Specifications

## LIFTING CAPACITY EC250EL

Lifting capacity at the arm end without bucket.

For lifting capacity including bucket, simply subtract actual weight of the direct fit bucket or the bucket with quick coupler from the following values.

	Lifting hook related to ground level	1.5m, 5 ft		3.0m, 10 ft		4.5m, 15 ft		6.0m, 20 ft		7.5m, 25 ft		9.0m, 30 ft		Max. Reach		
		Along UC	Across UC	Along UC	Across UC	Along UC	Across UC	Along UC	Across UC	Along UC	Across UC	Along UC	Across UC	Along UC	Across UC	m
Boom : 6.0m , 19'8"	7.5 m kg							*6 740	*6 740					*6 800	*6 800	6.1
	25 ft lb							*14,560	*14,560					*15,010	*15,010	19.7
	6.0 m kg							*6 750	*6 750					*6 790	5 360	7.2
	20 ft lb							*14,800	*14,800					*14,970	11,970	23.6
	4.5 m kg					*9 130	*9 130	*7 590	7 040	*6 960	4 970			6 780	4 550	7.9
	15 ft lb					*19,650	*19,650	*16,490	15,190	*15,280	10,700			15,030	10,100	25.9
	3.0 m kg					*11 820	10 190	*8 790	6 710	7 240	4 830			6 230	4 160	8.3
	10 ft lb					*25,390	22,000	*19,040	14,480	15,600	10,410			13,750	9,200	27.1
	2.5m , 8'2"	1.5 m kg				*13 910	9 610	9 920	6 410	7 080	4 680			6 060	4 030	8.3
	5 ft lb					*30,000	20,730	21,360	13,830	15,260	10,100			13,360	8,880	27.3
	0 m kg					*14 690	9 390	9 710	6 220	6 970	4 580			6 230	4 120	8.1
	0 ft lb					*31,820	20,220	20,900	13,430	15,020	9,890			13,730	9,080	26.6
Shoe : 600mm, 24"	-1.5 m kg													6 830	4,490	7.6
	-5 ft lb													15,100	9,930	24.9
	-3.0 m kg					*18 550	*18 550	*13 430	9 500	9 740	6 250			8 270	5 390	6.7
	-10 ft lb					*40,270	*40,270	*29,060	20,460	20,980	13,500			18,390	11,990	21.9
	-4.5 m kg					*14 840	*14 840	*10 810	9 820					*8 990	7 850	5.3
	-15 ft lb					*31,840	*31,840	*23,020	21,200					*19,820	17,790	16.9
	7.5 m kg													*6 060	*6 060	6.6
	25 ft lb													*13,460	*13,460	21.4
	6.0 m kg													*5 810	4 960	7.7
	20 ft lb													*12,820	11,070	25.0
	4.5 m kg													*5 830	4 280	8.3
	Arm : 2.97m , 9'9"	15 ft lb					*17 840	*17 840	*15,420	*14,370	10,900				*12,840	9,490
3.0 m kg						*10 990	10 450	*8 360	6 830	*7 170	4 900			5 860	3 930	8.6
10 ft lb						*23,630	22,550	*18,110	14,730	*15,620	10,570			12,950	8,690	28.3
1.5 m kg						*13 350	9 790	*9 610	6 500	7 140	4 740			5 710	3 810	8.7
5 ft lb						*28,800	21,120	*20,820	14,030	15,380	10,220			12,590	8,400	28.6
0 m kg						*14 550	9 470	9 780	6 280	7 000	4 610			5 840	3 870	8.5
0 ft lb						*31,500	20,410	21,040	13,560	15,090	9,950			12,880	8,550	27.9
-1.5 m kg						*10 650	*10 650	*14 700	9 390	9 670	6 190			6 330	4 180	8.0
-5 ft lb						*11,570	*11,570	*31,500	20,410	21,040	13,560			12,880	8,550	27.9
-3.0 m kg						*17 750	*17 750	*13 950	9 470	9 700	6 220			7 460	4 890	7.2
-10 ft lb						*40,420	*40,420	*30,210	20,390	20,890	13,430			16,570	10,870	23.4
-4.5 m kg						*16 670	*16 670	*11 940	9 710					*8 870	6 660	5.8
Boom : 6.0m , 19'8"	-15 ft lb					*35,860	*35,860	*25,620	20,940					*19,620	15,020	18.9
	7.5 m kg													*5 010	*5 010	7.2
	25 ft lb													*11,110	*11,110	23.4
	6.0 m kg													*4 860	4 480	8.2
	20 ft lb													*10,740	9,990	26.7
	4.5 m kg													*4 920	3 910	8.8
	15 ft lb													*10,830	8,660	28.8
	3.0 m kg													*5 140	3 600	9.1
	10 ft lb													*11,320	7,960	29.9
	1.5 m kg													5 240	3 480	9.2
	5 ft lb													11,560	7,670	30.1
	0 m kg													5 330	3 520	9.0
Shoe : 600mm, 24"	0 ft lb													11,750	7,760	29.5
	-1.5 m kg													5 710	3 750	8.5
	-5 ft lb													12,610	8,280	27.9
	-3.0 m kg													6 560	4 290	7.7
	-10 ft lb													14,550	9,510	25.3
	-4.5 m kg													*8 500	5 520	6.5
	-15 ft lb													*18,820	12,390	21.2
	-6.0 m kg													*9 300	*9 300	4.5
	-20 ft lb													*20,500	*20,500	14.9
	7.5 m kg													*6 770	*6 770	6.1
	25 ft lb													*14,960	*14,960	19.7
	6.0 m kg													*6 760	5 340	7.2
Arm : 2.5m , 8'2"	20 ft lb													*14,900	11,940	23.6
	4.5 m kg													6 760	4 530	7.9
	15 ft lb													15,000	10,060	25.9
	3.0 m kg													6 210	4 140	8.3
	10 ft lb													13,720	9,140	27.1
	1.5 m kg													6 040	4 000	8.3
	5 ft lb													13,320	8,820	26.3
	0 m kg													6 200	4 090	8.1
	0 ft lb													13,680	9,020	26.6
	-1.5 m kg													6 810	4 460	7.6
	-5 ft lb													15,040	9,860	24.9
	-3.0 m kg													8 240	5 360	6.7
Shoe : 600mm, 24"	-10 ft lb													18,330	11,910	21.9
	-4.5 m kg													*8 920	7 810	5.3
	-15 ft lb													*19,680	17,700	16.9
	7.5 m kg													*6 050	*6 050	6.6
	25 ft lb													*13,460	*13,460	21.4
	6.0 m kg													*5 790	4 900	7.7
	20 ft lb													*12,820	11,040	25.0
	4.5 m kg													*5 810	4 220	8.3
	15 ft lb													*12,840	9,450	27.2
	3.0 m kg													5 800	3 860	8.6
	10 ft lb													12,910	8,640	28.3
	1.5 m kg													5 640	3 730	8.7
Shoe : 600mm, 24"	5 ft lb													12,550	8,340	28.6
	0 m kg													5 770	3 800	8.5
	0 ft lb													12,830	8,490	27.9
	-1.5 m kg													6 250	4 100	8.0
	-5 ft lb													13,930	9,170	26.3
	-3.0 m kg													7 380	4 800	7.2
	-10 ft lb													16,510	10,800	23.4
	-4.5 m kg													*8 740	6 570	5.8
	-15 ft lb													*19,940	14,940	18.8



# LIFTING CAPACITY EC250EL

Lifting capacity at the arm end without bucket.

For lifting capacity including bucket, simply subtract actual weight of the direct fit bucket or the bucket with quick coupler from the following values.

	Lifting hook related to ground level	1.5m, 5 ft		3.0m, 10 ft		4.5m, 15 ft		6.0m, 20 ft		7.5m, 25 ft		9.0m, 30 ft		Max. Reach		m
		Along UC	Across UC	Along UC	Across UC	Along UC	Across UC	Along UC	Across UC	Along UC	Across UC	Along UC	Across UC	Along UC	Across UC	
Boom : 6.0m , 19'8"	7.5 m kg													*5 010	*5 010	72
	25 ft lb													*11,110	*11,110	23.4
	6.0 m kg									*5 490	5 230			*4 860	4 470	8.2
	20 ft lb									*12,120	11,230			*10,740	9,970	26.7
	4.5 m kg							*6 260	*6 260	*5 900	5 100			*4 920	3 890	8.8
	15 ft lb							*13,610	*13,610	*12,910	10,970			*10,830	8,630	28.8
	3.0 m kg			*15 460	*15 460	*9 620	*9 620	*7 560	6 880	*6 580	4 900	5 490	3 660	*5 140	3 580	9.1
	10 ft lb			*32,810	*32,810	*20,710	*20,710	*16,390	14,850	*14,330	10,560	12,100	8,070	*11,320	7,920	29.9
	1.5 m kg					*12 230	9 850	*8 920	6 490	7 110	4 690	5 380	3 560	*5 220	3 460	9.2
	5 ft lb					*26,380	21,250	*19,320	14,010	15,320	10,120	11,590	7,670	*11,520	7,630	30.1
	0 m kg			*7 030	*7 030	*13 880	9 370	9 710	6 200	6 930	4 530			*5 310	3 490	9.0
	0 ft lb			*16,080	*16,080	*30,040	20,180	20,900	13,370	14,930	9,760			*11,710	7,700	29.5
Shoe : 600mm, 24"	-1.5 m kg	*6 770	*6 770	*10 770	*10 770	*14 480	9 180	9 530	6 040	6 830	4 430			*5 680	3 720	8.5
	-5 ft lb	*15,140	*15,140	*24,400	*24,400	*31,380	19,760	20,510	13,040	14,710	9,560			*12,560	8,220	27.9
	-3.0 m kg	*11 010	*11 010	*15 970	*15 970	*14 160	9 190	9 510	6 020	6 830	4 440			*6 530	4 260	7.7
	-10 ft lb	*24,690	*24,690	*36,250	*36,250	*30,680	19,780	20,470	12,990	14,740	9,590			*14,500	9,450	25.3
	-4.5 m kg	*16 320	*16 320	*18 330	*18 330	*12 790	9 370	*9 440	6 150					*8 440	5 490	6.5
	-15 ft lb	*36,820	*36,820	*39,520	*39,520	*27,560	20,200	*20,210	13,300					*18,700	12,310	21.2
	-6.0 m kg					*9 310	*9 310							*9 230	*9 230	4.5
	-20 ft lb					*20,530	*20,530							*20,350	*20,350	14.9
	7.5 m kg							*6 710	*6 710					*6 770	*6 770	6.1
	25 ft lb							*14,790	*14,790					*14,960	*14,960	19.7
	6.0 m kg							*6 730	*6 730					*6 760	5 450	7.2
	20 ft lb							*14,740	*14,740					*14,900	12,180	23.6
Arm : 2.5m , 8'2"	4.5 m kg					*9 100	*9 100	*7 560	7 160	*6 930	5 060			*6 900	4 630	7.9
	15 ft lb					*19,580	*19,580	*16,420	15,450	*15,200	10,880			*15,190	10,270	25.9
	3.0 m kg					*11 760	10 350	*8 750	6 820	7 390	4 910			*6 350	4 230	8.3
	10 ft lb					*25,270	22,350	*18,940	14,710	15,910	10,580			*14,020	9,340	27.1
	1.5 m kg					*13 830	9 750	*9 870	6 510	7 220	4 750			*6 170	4 090	8.3
	5 ft lb					*29,840	21,040	*21,380	14,050	15,550	10,260			*13,620	9,020	27.3
	0 m kg					*14 610	9 520	9 900	6 320	7 100	4 650			*6 350	4 180	8.1
	0 ft lb					*31,640	20,510	21,300	13,630	15,310	10,040			*14,000	9,220	26.6
	-1.5 m kg			*10 400	*10 400	*14 420	9 510	9 830	6 260	7 090	4 640			*6 960	4 560	7.6
	-5 ft lb			*23,830	*23,830	*31,270	20,470	21,160	13,500	15,630	10,230			*15,380	10,080	24.9
	-3.0 m kg			*18 430	*18 430	*13 340	9 640	9 920	6 340					*8 420	5 470	6.7
	-10 ft lb			*40,020	*40,020	*28,890	20,760	21,370	13,700					*18,730	12,170	21.5
4 950kg, 10,910lb	-4.5 m kg			*14 740	*14 740	*10 740	9 970							*8 920	7 960	5.3
	-15 ft lb			*31,610	*31,610	*22,870	21,520							*19,680	18,060	16.9
	7.5 m kg							*5 980	*5 980					*6 050	*6 050	6.6
	25 ft lb							*13,200	*13,200					*13,420	*13,420	21.4
	6.0 m kg							*6 130	*6 130	*6 190	5 200			*5 790	5 000	7.7
	20 ft lb							*13,430	*13,430	*13,650	11,460			*12,780	11,170	25.0
	4.5 m kg					*8 190	*8 190	*7 000	*7 000	*6 470	5 100			*5 810	4 300	8.3
	15 ft lb					*17,640	*17,640	*15,230	*15,230	*14,170	10,990			*12,800	9,540	27.2
	3.0 m kg					*10 860	10 550	*8 250	6 880	*7 070	4 930			*5 930	3 950	8.6
	10 ft lb					*23,340	22,760	*17,870	14,850	*15,410	10,630			*13,100	8,720	28.3
	1.5 m kg					*13 190	9 850	*9 480	6 540	7 220	4 760			*5 770	3 820	8.7
	5 ft lb					*28,440	21,250	*20,540	14,110	15,560	10,260			*12,720	8,420	28.6
Shoe : 800mm, 32"	0 m kg			*5 230	*5 230	*14 370	9 510	9 890	6 310	7 080	4 620			*5 900	3 880	8.5
	0 ft lb			*11,530	*11,530	*31,100	20,490	21,280	13,600	15,260	9,980			*13,010	8,560	27.9
	-1.5 m kg	*6 610	*6 610	*10 640	*10 640	*14 510	9 430	9 780	6 210	7 020	4 570			*6 400	4 190	8.0
	-5 ft lb	*14,840	*14,840	*24,190	*24,190	*31,470	20,290	21,040	13,390	15,140	9,870			*14,140	9,260	26.3
	-3.0 m kg	*12 320	*12 320	*17 730	*17 730	*13 770	9 510	9 820	6 240					*7 540	4 910	7.2
	-10 ft lb	*27,680	*27,680	*40,400	*40,400	*29,820	20,480	21,130	13,470					*16,760	10,900	23.4
	-4.5 m kg			*16 440	*16 440	*11 780	9 770							*8 740	6 700	5.8
	-15 ft lb			*35,370	*35,370	*25,260	21,070							*19,330	15,110	18.9
	7.5 m kg													*5 010	*5 010	7.2
	25 ft lb													*11,110	*11,110	23.4
	6.0 m kg									*5 490	5 330			*4 860	4 560	8.2
	20 ft lb									*12,120	11,450			*10,740	10,170	26.7
Arm : 3.6m , 11'10"	4.5 m kg							*6 260	*6 260	*5 900	5 200			*4 920	3 970	8.8
	15 ft lb							*13,610	*13,610	*12,910	11,190			*10,830	8,810	28.8
	3.0 m kg			*15 460	*15 460	*9 620	*9 620	*7 560	7 010	*6 580	5 000	5 610	3 740	*5 140	3 660	9.1
	10 ft lb			*32,810	*32,810	*20,710	*20,710	*16,390	15,130	*14,330	10,770	12,360	8,240	*11,320	8,090	29.9
	1.5 m kg					*12 230	10 050	*8 920	6 620	7 270	4 790	5 510	3 640	*5 340	3 530	9.2
	5 ft lb					*26,380	21,670	*19,320	14,290	15,660	10,340	11,860	7,850	*11,790	7,800	30.1
	0 m kg			*7 030	*7 030	*13 880	9 560	9 930	6 330	7 090	4 630			*5 430	3 570	9.0
	0 ft lb			*16,080	*16,080	*30,040	20,600	21,360	13,660	15,270	9,980			*11,990	7,880	29.5
	-1.5 m kg	*6 770	*6 770	*10 770	*10 770	*14 480	9 380	9 750	6 180	6 980	4 530			*5 820	3 810	8.5
	-5 ft lb	*15,140	*15,140	*24,400	*24,400	*31,380	20,180	20,980	13,320	15,050	9,780			*12,850	8,410	27.9
	-3.0 m kg	*11 010	*11 010	*15 970	*15 970	*14 160	9 390	9 720	6 150	6 990	4 540			*6 690	4 350	7.7
	-10 ft lb	*24,690	*24,690	*36,250	*36,250	*30,680	20,210	20,930	13,280	15,080	9,810			*14,830	9,660	25.3
4 950kg, 10,910lb	-4.5 m kg	*16 320	*16 320	*18 330	*18 330	*12 790	9 570	*9 440	6 280					*8 440	5 610	6.5
	-15 ft lb	*36,820	*36,820	*39,520	*39,520	*27,560	20,620	*20,210	13,580					*18,700	12,580	21.2
	-6.0 m kg					*9 310	*9 310							*9 230	*9 230	4.5
	-20 ft lb					*20,530	*20,530							*20,350	*20,350	14.9

Notes: 1. Machine in "Fine Mode-F" (Power Boost) for lifting capacities. 2. The above loads are in compliance with SAE J1097 and ISO 10567 Hydraulic Excavator Lifting Capacity Standards. 3. Rated loads do not exceed 87% of hydraulic lifting capacity or 75% of tipping load. 4. Rated loads marked with an asterisk (\*) are limited by hydraulic capacity rather than tipping load.



# Specifications

## LIFTING CAPACITY EC250ELR

Lifting capacity at the arm end without bucket.

For lifting capacity including bucket, simply subtract actual weight of the direct fit bucket or the bucket with quick coupler from the following values.

	Lifting hook related to ground level	0 m, 0 ft		1.5 m, 5 ft		3.0 m, 10 ft		4.5 m, 15 ft		6.0 m, 20 ft		7.5 m, 25 ft		9.0 m, 30 ft	
		Along UC	Across UC	Along UC	Across UC	Along UC	Across UC	Along UC	Across UC	Along UC	Across UC	Along UC	Across UC	Along UC	Across UC
	3.0 m kg					*4,910	*4,910	*8,120	*8,120	*5,900	*5,900	*4,750	*4,750	*4,050	*4,050
	10 ft lb					*12,320	*12,320	*17,390	*17,390	*12,710	*12,710	*10,270	*10,270	*8,790	*8,730
	1.5 m kg					*1,842	*1,842	*5,950	*5,950	*7,240	*6,470	*5,580	*4,790	*4,610	*3,690
	5 ft lb					*4,060	*4,060	*14,010	*14,010	*15,610	*14,010	*12,070	*10,350	*9,980	*7,970
	0 m kg					*1,860	*1,860	*4,070	*4,070	*8,310	*5,770	*6,310	*4,320	*5,120	*3,380
	0 ft lb					*4,220	*4,220	*9,330	*9,330	*17,950	*12,470	*13,650	*9,340	*11,090	*7,280
	-1.5 m kg			*1,820	*1,820	*2,380	*2,380	*3,940	*3,940	*7,270	*5,320	*6,530	*3,980	*5,060	*3,120
	-5 ft lb			*4,050	*4,050	*5,350	*5,350	*8,930	*8,930	*16,710	*11,480	*14,070	*8,600	*10,920	*6,740
	-3 m kg	*2,480	*2,480	*2,460	*2,460	*3,000	*3,000	*4,300	*4,300	*6,930	*5,070	*6,280	*3,760	*4,870	*2,940
	-10 ft lb	*5,490	*5,490	*5,480	*5,480	*6,740	*6,740	*9,720	*9,720	*15,820	*10,930	*13,540	*8,110	*10,500	*6,350
	-4.5 m kg	*2,960	*2,960	*3,110	*3,110	*3,680	*3,680	*4,900	*4,900	*7,250	*4,960	*6,150	*3,640	*4,750	*2,830
	-15 ft lb	*6,600	*6,600	*6,940	*6,940	*8,260	*8,260	*11,060	*11,060	*16,510	*10,700	*13,250	*7,850	*10,240	*6,110
	-6 m kg	*3,520	*3,520	*3,780	*3,780	*4,420	*4,420	*5,650	*5,650	*7,960	*4,960	*6,110	*3,600	*4,700	*2,790
	-20 ft lb	*7,860	*7,860	*8,460	*8,460	*9,930	*9,930	*12,770	*12,770	*18,130	*10,690	*13,160	*7,760	*10,130	*6,010
	-7.5 m kg	*4,130	*4,130	*4,500	*4,500	*5,240	*5,240	*6,560	*6,560	*8,650	*5,030	*6,140	*3,630	*4,710	*2,790
	-25 ft lb	*9,230	*9,230	*10,080	*10,080	*11,770	*11,770	*14,840	*14,840	*18,620	*10,850	*13,230	*7,830	*10,160	*6,030
	-9 m kg			*5,270	*5,270	*6,140	*6,140	*7,650	*7,650	*8,660	*5,170	*6,240	*3,720	*4,780	*2,860
	-30 ft lb			*11,820	*11,820	*13,830	*13,830	*17,350	*17,350	*18,670	*11,180	*13,460	*8,040	*10,320	*6,180
	-10.5 m kg					*7,170	*7,170	*8,990	*8,450	*7,830	*5,390	*6,350	*3,870	*4,910	*2,980
	-35 ft lb					*16,180	*16,180	*20,480	*18,260	*16,780	*11,670	*13,590	*8,390	*10,640	*6,480
	-12 m kg							*8,330	*8,330	*6,590	*5,700	*5,360	*4,110	*4,360	*3,190
	-40 ft lb							*17,550	*17,550	*13,900	*12,380	*11,260	*8,950	*9,050	*6,980
	Lifting hook related to ground level	10.5 m, 35 ft		12 m, 40 ft		13.5 m, 45 ft		15 m, 50 ft		16.5 m, 55 ft		Max. Reach			
		Along UC	Across UC	Along UC	Across UC	Along UC	Across UC	Along UC	Across UC	Along UC	Across UC	Along UC	Across UC	m	
Boom : 10.2m LR, 33'6"	13.5 m kg			*1,429								*1,370	*1,370	12.4	
	45 ft lb			*3,150								*3,070	*3,070	40.1	
	12.0 m kg											*1,300	*1,300	13.7	
	40 ft lb											*2,890	*2,890	44.5	
Arm : 7.85m LR, 25'9"	10.5 m kg					*2,190	*2,190					*1,260	*1,260	14.7	
	35 ft lb					*4,410	*4,410					*2,790	*2,790	47.9	
	Shoe : 800mm, 32"					*2,440	*2,440	*1,730	*1,730			*1,240	*1,240	15.5	
	30 ft lb					*5,380	*5,140	*3,180	*3,180			*2,740	*2,740	50.6	
CWT : 6 200kg, 13,670lb	7.5 m kg			*2,550	*2,550	*2,530	*2,350	*2,250	*1,850			*1,240	*1,240	16.1	
	25 ft lb			*5,600	*5,600	*5,550	*5,020	*4,500	*3,940			*2,730	*2,730	52.7	
	6.0 m kg			*2,750	*2,750	*2,660	*2,260	*2,600	*1,790			*1,250	*1,250	16.6	
	20 ft lb			*6,020	*6,020	*5,830	*4,830	*5,440	*3,830			*2,760	*2,760	54.2	
	4.5 m kg	*3,210	*3,210	*2,990	*2,690	*2,830	*2,150	*2,710	*1,720	*1,740	*1,370	*1,280	*1,280	16.9	
	15 ft lb	*6,980	*6,980	*6,530	*5,780	*6,190	*4,600	*5,820	*3,670	*3,070	*2,910	*2,830	*2,830	55.3	
	3.0 m kg	*3,590	*3,160	*3,260	*2,520	*3,030	*2,030	*2,630	*1,640	*2,020	*1,320	*1,330	*1,220	17.0	
	10 ft lb	*7,800	*6,810	*7,110	*5,420	*6,610	*4,350	*5,640	*3,500	*3,720	*2,810	*2,940	*2,700	55.8	
	1.5 m kg	*3,980	*2,920	*3,540	*2,350	*3,030	*1,910	*2,540	*1,550	*2,140	*1,270	*1,400	*1,170	17.1	
	5 ft lb	*8,640	*6,290	*7,710	*5,050	*6,530	*4,090	*5,450	*3,320	*4,040	*2,700	*3,090	*2,590	55.9	
	0 m kg	*4,270	*2,700	*3,500	*2,190	*2,920	*1,790	*2,460	*1,470	*2,090	*1,220	*1,490	*1,150	17.0	
	0 ft lb	*9,210	*5,810	*7,540	*4,710	*6,270	*3,850	*5,280	*3,160	*3,970	*2,600	*3,290	*2,530	55.6	
	-1.5 m kg	*4,080	*2,510	*3,360	*2,050	*2,810	*1,690	*2,390	*1,410	*1,990	*1,170	*1,610	*1,150	16.7	
	-5 ft lb	*8,780	*5,420	*7,240	*4,420	*6,060	*3,640	*5,130	*3,020			*3,560	*2,530	54.8	
	-3 m kg	*3,930	*2,380	*3,250	*1,950	*2,730	*1,620	*2,330	*1,360			*1,770	*1,170	16.3	
	-10 ft lb	*8,470	*5,120	*7,000	*4,190	*5,890	*3,480	*5,020	*2,910			*3,920	*2,590	53.5	
	-4.5 m kg	*3,830	*2,280	*3,180	*1,880	*2,680	*1,570	*2,300	*1,330			*1,990	*1,230	15.8	
	-15 ft lb	*8,260	*4,920	*6,840	*4,050	*5,780	*3,380	*4,970	*2,860			*4,410	*2,720	51.7	
	-6 m kg	*3,780	*2,240	*3,140	*1,850	*2,660	*1,550	*2,310	*1,330			*2,290	*1,320	15.1	
	-20 ft lb	*8,160	*4,830	*6,780	*3,980	*5,750	*3,350					*5,080	*2,940	49.4	
	-7.5 m kg	*3,790	*2,240	*3,150	*1,860	*2,690	*1,570					*2,520	*1,470	14.2	
	-25 ft lb	*8,180	*4,850	*6,810	*4,010	*5,820	*3,410					*5,610	*3,290	46.3	
	-9 m kg	*3,850	*2,300	*3,210	*1,910							*2,880	*1,720	13.1	
	-30 ft lb	*8,320	*4,980	*6,960	*4,150							*6,450	*3,850	42.5	
	-10.5 m kg	*3,970	*2,410									*3,470	*2,120	11.6	
	-35 ft lb	*8,610	*5,250									*7,860	*4,810	37.6	
	-12 m kg											*3,880	*2,870	9.8	
	-40 ft lb											*8,580	*6,660	31.1	

Notes: 1. Machine in "Fine Mode-F" (Power Boost) for lifting capacities. 2. The above loads are in compliance with SAE J1097 and ISO 10567 Hydraulic Excavator Lifting Capacity Standards. 3. Rated loads do not exceed 87% of hydraulic lifting capacity or 75% of tipping load. 4. Rated loads marked with an asterisk (\*) are limited by hydraulic capacity rather than tipping load.



# LIFTING CAPACITY EC300ELR

Lifting capacity at the arm end without bucket.

For lifting capacity including bucket, simply subtract actual weight of the direct fit bucket or the bucket with quick coupler from the following values.

	Lifting hook related to ground level	0 m, 0 ft		1.5m, 5 ft		3.0m, 10 ft		4.5m, 15 ft		6.0m, 20 ft		7.5m, 25 ft		9.0m, 30 ft	
		Along UC	Across UC	Along UC	Across UC	Along UC	Across UC	Along UC	Across UC	Along UC	Across UC	Along UC	Across UC	Along UC	Across UC
Boom : 10.2m LR, 33'6" Arm : 7.9m LR, 25'9" Shoe : 800mm, 32" CWT : 6 800kg, 13,670lb	3.0 m kg					*5 600	*5 600					*4 870	*4 870	*4 130	*4 130
	10 ft lb					*13,960	*13,960					*10,530	*10,530	*8,940	*8,940
	1.5 m kg							*7 490	*7 490	*7 360	7 220	*5 660	5 350	*4 660	4 130
	5 ft lb							*17,590	*17,590	*15,890	15,630	*12,250	11,560	*10,090	8,910
	0 m kg					*2 520	*2 520	*5 350	*5 350	*8 370	6 430	*6 350	4 820	*5 140	3 770
	0 ft lb					*5,700	*5,700	*12,250	*12,250	*18,080	13,890	*13,740	10,420	*11,140	8,130
	-1.5 m kg			*2 480	*2 480	*3 240	*3 240	*5 280	*5 280	*9 030	5 920	*6 870	4 440	*5 540	3 490
	-5 ft lb			*5,510	*5,510	*7,280	*7,280	*11,970	*11,970	*19,540	12,780	*14,880	9,580	*12,000	7,520
	-3 m kg	*3 350	*3 350	*3 360	*3 360	*4 100	*4 100	*5 830	*5 830	*9 320	5 650	*7 210	4 190	*5 790	3 280
	-10 ft lb	*7,430	*7,430	*7,500	*7,500	*9,200	*9,200	*13,170	*13,170	*20,320	12,180	*15,630	9,040	*12,490	7,080
	-4.5 m kg	*4 060	*4 060	*4 270	*4 270	*5 050	*5 050	*6 690	*6 690	*9 480	5 530	*7 340	4 060	*5 660	3 160
	-15 ft lb	*9,030	*9,030	*9,530	*9,530	*11,330	*11,330	*15,080	*15,080	*20,540	11,920	*15,800	8,740	*12,200	6,810
	-6 m kg	*4 850	*4 850	*5 210	*5 210	*6 090	*6 090	*7 760	*7 760	*9 360	5 520	*7 290	4 010	*5 600	3 110
	-20 ft lb	*10,820	*10,820	*11,660	*11,660	*13,670	*13,670	*17,520	*17,520	*20,270	11,910	*15,700	8,650	*12,070	6,700
	-7.5 m kg	*5 720	*5 720	*6 230	*6 230	*7 240	*7 240	*9 050	*8 770	*9 020	5 610	*7 180	4 040	*5 610	3 120
	-25 ft lb	*12,770	*12,770	*13,950	*13,950	*16,270	*16,270	*20,480	18,890	*19,510	12,100	*15,530	8,730	*12,110	6,730
	-9 m kg	*6 650	*6 650	*7 330	*7 330	*8 530	*8 530	*10 630	9 060	*8 450	5 770	*6 790	4 150	*5 610	3 190
	-30 ft lb	*14,870	*14,870	*16,450	*16,450	*19,230	*19,230	*23,630	19,530	*18,200	12,470	*14,630	8,970	*12,060	6,910
	-10.5 m kg			*8 550	*8 550	*10 040	*10 040	*9 670	9 450	*7 560	6 020	*6 130	4 330	*5 060	3 340
	-35 ft lb			*19,210	*19,210	*22,680	*22,680	*20,680	20,420	*16,170	13,040	*13,100	9,380	*10,780	7,240
	-12 m kg					*10 550	*10 550	*7 840	*7 840	*6 230	*6 230	*5 070	4 610	*4 100	3 580
	-40 ft lb					*22,030	*22,030	*16,470	*16,470	*13,100	*13,100	*10,600	10,040	*8,460	7,830
	Lifting hook related to ground level	10.5m, 35 ft		12m, 40 ft		13.5m, 45 ft		15m, 50 ft		16.5m, 55 ft		Max. Reach			
		Along UC	Across UC	Along UC	Across UC	Along UC	Across UC	Along UC	Across UC	Along UC	Across UC	Along UC	Across UC	m	
	13.5 m kg											*1 170	*1 170	13.0	
	45 ft lb											*2,600	*2,600	41.8	
	12.0 m kg					*1 700	*1 700					*1 090	*1 090	14.2	
	40 ft lb					*3,710	*3,710					*2,430	*2,430	46.0	
	10.5 m kg					*2 250	*2 250	*1 180	*1 180			*1 050	*1 050	15.1	
	35 ft lb					*4,640	*4,640	*2,600	*2,600			*2,330	*2,330	49.3	
	9.0 m kg					*2 450	*2 450	*1 870	*1 870			*1 030	*1 030	15.9	
	30 ft lb					*5,390	*5,390	*3,600	*3,600			*2,280	*2,280	51.8	
	7.5 m kg					*2 540	*2 540	*2 310	2 090			*1 020	*1 020	16.4	
	25 ft lb					*5,570	*5,570	*4,710	4,440			*2,260	*2,260	53.8	
	6.0 m kg			*2 790	*2 790	*2 670	2 540	*2 590	2 020	*1 520	*1 520	*1 030	*1 030	16.9	
	20 ft lb			*6,080	*6,080	*5,850	5,430	*5,550	4,300	*2,560	*2,560	*2,270	*2,270	55.3	
	4.5 m kg	*3 270	*3 270	*3 020	3 020	*2 840	2 410	*2 700	1 930	*1 890	1 540	*1 050	*1 050	17.2	
	15 ft lb	*7,100	*7,100	*6,580	6,490	*6,200	5,170	*5,920	4,130	*3,490	3,270	*2,320	*2,320	56.3	
	3.0 m kg	*3 630	3 540	*3 280	2 820	*3 030	2 270	*2 840	1 840	*2 150	1 480	*1 090	*1 090	17.3	
	10 ft lb	*7,890	7,640	*7,140	6,070	*6,590	4,880	*6,190	3,930	*4,080	3,150	*2,400	*2,400	56.8	
	1.5 m kg	*4 000	3 270	*3 550	2 630	*3 220	2 140	*2 970	1 740	*2 310	1 420	*1 140	*1 140	17.3	
	5 ft lb	*8,690	7,040	*7,710	5,650	*7,010	4,580	*6,480	3,730	*4,380	3,020	*2,520	*2,520	56.9	
	0 m kg	*4 350	3 020	*3 800	2 450	*3 400	2 010	*2 920	1 650	*2 340	1 360	*1 210	*1 210	17.2	
	0 ft lb	*9,440	6,500	*8,260	5,270	*7,400	4,300	*6,290	3,530	*4,340	2,910	*2,680	*2,680	56.5	
	-1.5 m kg	*4 650	2 810	*3 990	2 300	*3 350	1 890	*2 840	1 570	*2 150	1 310	*1 310	1 240	17.0	
	-5 ft lb	*10,080	6,050	*8,600	4,940	*7,210	4,070	*6,120	3,370	*3,760	2,810	*2,890	2,750	55.7	
	-3 m kg	4 670	2 650	*3 870	2 180	*3 260	1 810	*2 780	1 520	*1 630	1 290	*1 430	1 270	16.6	
	-10 ft lb	10,070	5,710	8,330	4,680	7,020	3,890	5,990	3,250	*3,590	2,840	*3,170	2,820	54.4	
	-4.5 m kg	4 560	2 550	*3 780	2 100	*3 200	1 750	*2 750	1 490			*1 600	1 340	16.1	
	-15 ft lb	9,830	5,490	8,150	4,520	6,900	3,770	5,940	3,200			*3,560	2,960	52.6	
	-6 m kg	4 510	2 500	*3 740	2 060	*3 180	1 730	*2 720	1 490			*1 830	1 450	15.4	
	-20 ft lb	9,730	5,390	8,080	4,450	6,860	3,740	*4,450	3,230			*4,090	3,210	50.2	
	-7.5 m kg	4 520	2 500	*3 760	2 070	*3 210	1 760					*2 170	1 620	14.5	
	-25 ft lb	9,750	5,410	8,120	4,480	6,940	3,820					*4,870	3,600	47.2	
	-9 m kg	4 580	2 570	*3 830	2 140							*2 710	1 880	13.3	
	-30 ft lb	9,910	5,560	8,290	4,650							*6,120	4,220	43.4	
	-10.5 m kg	*4 180	2 700									*3 400	2 310	11.9	
	-35 ft lb	*8,850	5,890									*7,520	5,240	38.5	
	-12 m kg											*3 420	3 100	10.1	
	-40 ft lb											*7,520	7,180	32.2	

Notes: 1. Machine in "Fine Mode-F" (Power Boost) for lifting capacities. 2. The above loads are in compliance with SAE J1097 and ISO 10567 Hydraulic Excavator Lifting Capacity Standards. 3. Rated loads do not exceed 87% of hydraulic lifting capacity or 75% of tipping load. 4. Rated loads marked with an asterisk (\*) are limited by hydraulic capacity rather than tipping load.



32



# LIFTING CAPACITY EC300EL

Lifting capacity at the arm end without bucket.

For lifting capacity including bucket, simply subtract actual weight of the direct fit bucket or the bucket with quick coupler from the following values.

	Lifting hook related to ground level	1.5m, 5 ft		3.0m, 10 ft		4.5m, 15 ft		6.0m, 20 ft		7.5m, 25 ft		9.0m, 30 ft		Max. Reach		m
		Along UC	Across UC	Along UC	Across UC	Along UC	Across UC	Along UC	Across UC	Along UC	Across UC	Along UC	Across UC	Along UC	Across UC	
Boom: 6.2m, 20'34"	7.5m 25 ft															8.0
	6.0m 20 ft															25.8
	4.5m 15 ft															8.8
	3.0m 10 ft															28.8
	1.5m 5 ft															9.4
	0 ft															30.7
	800mm, 32"															9.6
	600mm, 24"															31.6
	500kg, 1100lb															31.8
	450kg, 990lb															9.5
	400kg, 880lb															31.1
	350kg, 770lb															9.0
Arm: 3.7m, 12'2"	7.5m 25 ft															29.5
	6.0m 20 ft															8.3
	4.5m 15 ft															27.0
	3.0m 10 ft															7.1
	1.5m 5 ft															23.1
	0 ft															5.3
	800mm, 32"															16.3
	600mm, 24"															8.0
	500kg, 1100lb															25.8
	450kg, 990lb															8.8
	400kg, 880lb															28.8
	350kg, 770lb															9.4
Shoe: 800mm, 32"	7.5m 25 ft															30.7
	6.0m 20 ft															9.6
	4.5m 15 ft															31.6
	3.0m 10 ft															31.8
	1.5m 5 ft															9.5
	0 ft															31.1
	800mm, 32"															9.0
	600mm, 24"															29.5
	500kg, 1100lb															8.3
	450kg, 990lb															27.0
	400kg, 880lb															7.1
	350kg, 770lb															23.1
CWT: 5500kg, 12,130lb	7.5m 25 ft															5.3
	6.0m 20 ft															16.3
	4.5m 15 ft															8.0
	3.0m 10 ft															25.8
	1.5m 5 ft															8.8
	0 ft															28.8
	800mm, 32"															9.4
	600mm, 24"															30.7
	500kg, 1100lb															9.6
	450kg, 990lb															31.6
	400kg, 880lb															31.8
	350kg, 770lb															9.5

Notes: 1. Machine in "Fine Mode-F" (Power Boost) for lifting capacities. 2. The above loads are in compliance with SAE J1097 and ISO 10567 Hydraulic Excavator Lifting Capacity Standards. 3. Rated loads do not exceed 87% of hydraulic lifting capacity or 75% of tipping load. 4. Rated loads marked with an asterisk (\*) are limited by hydraulic capacity rather than tipping load.



# Equipment

## STANDARD EQUIPMENT

	EC250E	EC300E
<b>Engine</b>		
Turbocharged, 4 stroke diesel engine with water cooling, direct injection and charged air cooler that meets Tier 4f requirements	•	•
Air filter with indicator	•	•
Air intake heater	•	•
Cyclone precleaner	•	•
Electric engine shutoff	•	•
Fuel filter and water separator	•	•
Fuel filler pump: 50 l/min(13.2 gpm), with automatic shutoff	•	•
Alternator, 110 A	•	•
<b>Electric / Electronic control system</b>		
Contronics	•	•
Advanced mode control system	•	•
Selfdiagnostic system	•	•
Machine status indication	•	•
Engine speed sensing power control	•	•
Automatic idling system	•	•
Onetouch power boost	•	•
Safety stop/start function	•	•
Adjustable LCD color monitor	•	•
Master electrical disconnect switch	•	•
Engine restart prevention circuit	•	•
Highcapacity halogen lights:	•	•
Frame-mounted 2	•	•
Boom-mounted 1	•	•
Batteries, 2 x 12 V / 200 Ah	•	•
Start motor, 24 V / 5.5 kW	•	•
<b>Frame</b>		
Access way with handrail	•	•
Tool storage area	•	•
Punched metal antislip plates	•	•
Full height counterweight:	•	•
4950 kg (10910 lb)	•	—
6200 kg (13670 lb) - Long Reach	•	—
5500 kg (12130 lb)	—	•
6800 kg (14990 lb) - Long Reach	—	•
<b>Undercarriage</b>		
Undercover (heavyduty)	•	•
Hydraulic track adjusters	•	•
Greased and sealed track link	•	•
Track Guard	•	•
<b>Hydraulic system</b>		
Hose rupture valve: boom	•	•
Overload warning device	•	•
Automatic sensing hydraulic system	•	•
Summation system	•	•
Boom priority	•	•
Arm priority	•	•
Swing priority	•	•
ECO mode fuel saving technology	•	•
Boom, arm and bucket regeneration valves	•	•
Swing antirebound valves	•	•
Boom and arm holding valves	•	•
Multistage filtering system	•	•
Cylinder cushioning	•	•
Cylinder contamination seals	•	•
Auxiliary hydraulic valve	•	•
Automatic twospeed travel motors	•	•
Hydraulic oil, ISO VG 46	•	•

## STANDARD EQUIPMENT

	EC250E	EC300E
<b>Cab and interior</b>		
ROPS (ISO121172) certified cab	•	•
Silicon oil and rubber mounts with spring	•	•
Travel pedals and hand levers	•	•
Adjustable operator seat and joystick control console	•	•
Control joysticks with 4 switches each	•	•
Heater & airconditioner, automatic	•	•
Flexible antenna	•	•
Radio with MP3 & USB Jack with bluetooth	•	•
Hydraulic safety lock lever	•	•
Cab, allweather sound suppressed, includes:	•	•
Cup holders	•	•
Door locks	•	•
Tinted glass	•	•
Floor mat	•	•
Horn	•	•
Large storage area	•	•
Pullup type front window	•	•
Removable lower windshield	•	•
Seat belt	•	•
Safety glass	•	•
Sun screens, front, roof, rear	•	•
Rain shield	•	•
Windshield wiper with intermittent feature	•	•
Rear view camera	•	•
Master key	•	•
<b>Track shoes</b>		
800 mm (32") with triple grousers	•	•
<b>Digging equipment</b>		
Boom: 6.0 m (19'8") monoblock	•	—
Arm: 2.97 m (9'9")	•	—
Arm: 7.85 m (25'9"), Long Reach	•	—
Boom: 6.2 m (20'4") monoblock	—	•
Arm: 3.05 m (10'0")	—	•
Boom: 10.2 m (33'6") monoblock, Long Reach	•	•
Arm: 7.9 m (25'11"), Long Reach	—	•
Manual centralized lubrication	•	•

## OPTIONAL EQUIPMENT

	EC250E	EC300E
<b>Engine</b>		
Block heater: 120 V, 240 V	•	•
Oil bath pre-cleaner	•	•
Diesel coolant heater, 10 kW	•	•
Water separator with heater	•	•
Auto engine shutdown	•	•
<b>Electric</b>		
Extra work lights(Halogen or LED):	•	•
Cab-mounted 3	•	•
Boom-mounted 1	•	•
Counterweight-mounted 1	•	•
Travel alarm	•	•
Anti-theft system	•	•
Rotating warning beacon	•	•
<b>Undercarriage</b>		
Full track guard	•	•
Track shoes	•	•
600/700/800/900 mm (24/28/32/36") with triple grousers	•	•
600 mm (24") HD with triple grousers	•	•
Track shoes 600 mm (24") with double grousers	•	—
Track shoes 700 mm (28") with double grousers	•	•



## OPTIONAL EQUIPMENT

	EC250E	EC300E
<b>Hydraulic system</b>		
Hose rupture valve: arm	•	•
Boom float function with HRV	•	•
Boom float function without HRV	•	•
Hydraulic piping:	•	•
Attachment management system (up to 18 programmable memories)	•	•
Hammer & shear, 1 and 2 pump flow	•	•
Hammer & shear:	•	•
variable flow and pressure pre-setting	•	•
Additional return filter	•	•
Slope & rotator	•	•
Grapple	•	•
Oil leak (drain) line	•	•
Quick coupler piping	•	•
Volvo hydraulic quick coupler S1	•	—
Volvo hydraulic quick coupler S2	•	•
Volvo hydraulic quick coupler U24	•	—
Volvo hydraulic quick coupler U29	—	•
Volvo hydraulic quick coupler S70	•	—
Hydraulic oil, biodegradable 46	•	•
Hydraulic oil, longlife oil 32	•	•
Hydraulic oil, longlife oil 46	•	•
Hydraulic oil, longlife oil 68	•	•
<b>Machine control system</b>		
Volvo Active Control (Semi-autonomous)	•	•
Please refer to separate Brochure for more details		

## OPTIONAL EQUIPMENT

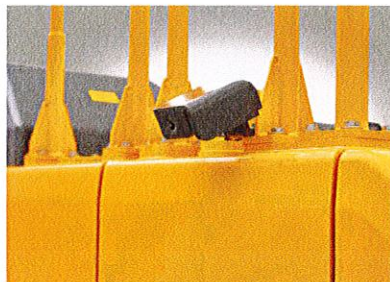
	EC250E	EC300E
<b>Cab and interior</b>		
Fabric seat with heater	•	•
Fabric seat with heater and air suspension	•	•
Opening top hatch	•	•
Falling object guard, FOG (fixed type or hinge type)	•	•
Frame-mounted	•	•
Cab-mounted	•	•
Cab-mounted falling object protective structure (FOPS)	•	•
Side view camera	•	•
Smoker kit (ashtray and lighter)	•	•
Safety net for front window	•	•
Lower wiper with intermittent control	•	•
Anti-vandalism kit	•	•
Specific key	•	•
Air compressor	•	•
<b>Digging equipment</b>		
Boom: 6.0 m (19'8") monoblock, heavy duty	•	—
Arm: 2.5 m (8'2") HD, 2.97 m (9'9") HD, 3.6 m (11'10")	•	—
Arm: 7.85 m (25'9"), long reach	•	—
Boom: 10.2 m (33'6") monoblock, long reach	•	•
Arm: 2.55 m (8'4") HD, 3.05 m (10'0") HD, 3.7 m (12'2")	—	•
Arm: 7.9 m (25'11"), long reach	—	•
Linkage with lifting eye	•	•
<b>Service</b>		
Tool kit, daily maintenance	•	•
Tool kit, full scale	•	•
Automatic lubrication system	•	—

## SELECTION OF VOLVO OPTIONAL EQUIPMENT

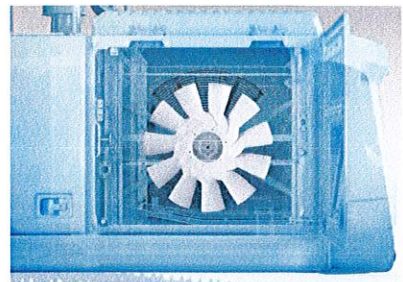
**LED Lights**



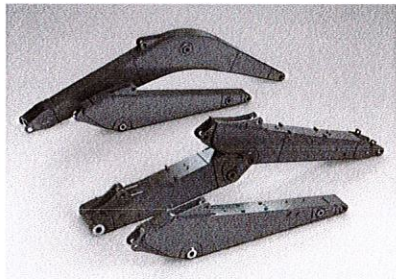
**Side-view camera**



**Reversible cooling fan**



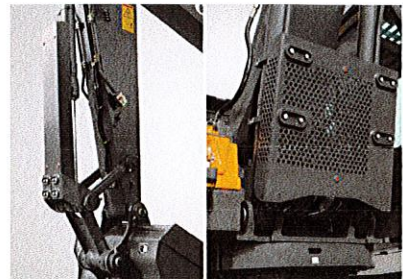
**Long reach and two-piece booms**



**Swing-out FOG (\*for demolition package only)**



**Demolition package**







**Volvo Construction Equipment**  
[volvoce.com](http://volvoce.com)



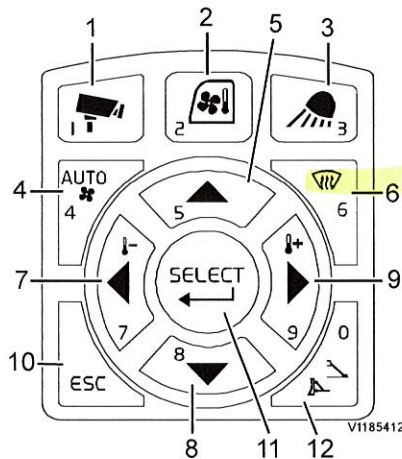
check message for quick coupler locking confirmation will appear in the IC (Instrument Cluster) and the buzzer sound will continue.

**NOTE!**

When the attachment is correctly locked in the attachment quick coupler, this has to be confirmed by pressing the upper end of the attachment quick coupler confirmation switch (position 8) on the left instrument panel, see page 35.

See page 223 for the complete procedure of the attachment quick coupler operation.

**12. IC (Instrument Cluster) control keypad**



- 1 Camera button
- 2 HVAC control button
- 3 Work lights control button
- 4 HVAC auto-mode select button
- 5 Arrow up button
- 6 Defroster select button
- 7 Arrow left button
- 8 Arrow down button
- 9 Arrow right button
- 10 ESC button
- 11 Select button
- 12 Stabiliser control button

**1 Camera button**

This button is used to control the camera screen in the IC (Instrument Cluster).

A short press on the camera button shows the camera view with the gauges on top of the screen.

A long press on the camera button will bring up the camera configuration bar.

For detailed information about the camera control, see page 128.

**2 HVAC control button**

This button is used to control the HVAC system.

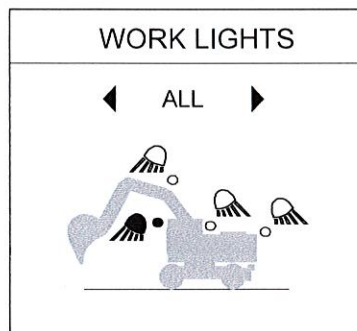
For detailed information about this climate control system, see page 117.

**3 Work lights control button**

This button is used to control the work lights on the boom, counterweight, cab front and cab rear.

A short press on the work lights button switches on/off the work lights with the latest configuration.

If one of the work lights is activated, this button is illuminated.



Work light control

**Work lights menu**

A long press on the work lights button opens the work lights menu on the IC (Instrument Cluster).

Press the arrow right or arrow left button to select the work lights on in clockwise / counter-clockwise order.

Press SELECT to turn the selected working light on/off. If the light is on the icon is yellow.

The selection menu can be closed by pressing ESC on the keypad.

The position where you escape the menu is saved.

**4 HVAC auto-mode select button**

This button is used to control the HVAC system.

See page 117.

**5 Arrow up button**

Press this button to scroll between items and adjust each segment on the screen.

**6 Defroster select button**

This button is used to activate the defroster.