



FY 2022 County Transportation Plan

Marshall County

Date Approved by the Marshall County Commission: August 11, 2021



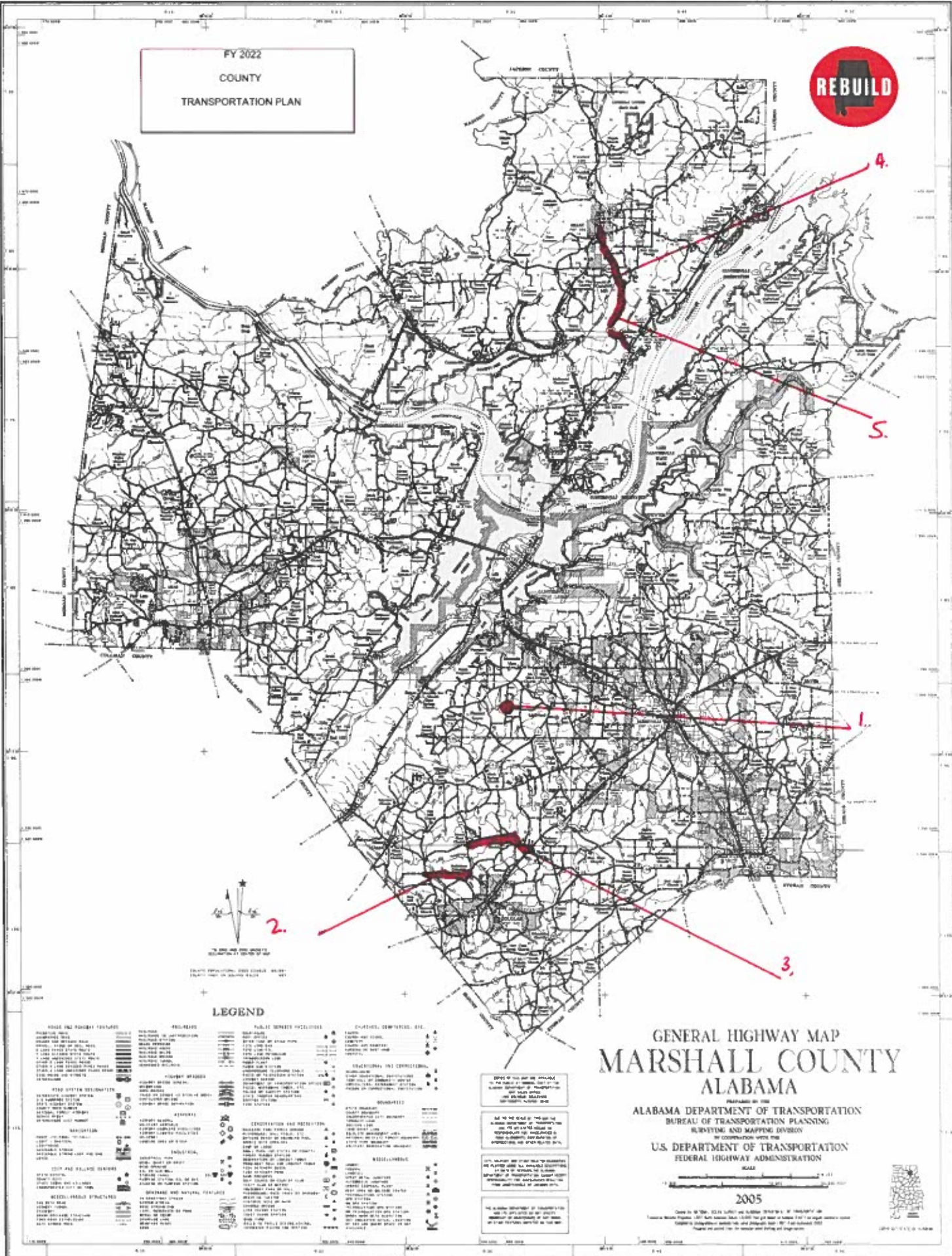
Date Amended by the Marshall County Commission: (If Applicable)

Map Index	Project No.	Road Name/Number	Begin		End		Project Details			Total Project Estimated Cost	Estimated Amount Planned To Be Utilized Under Competitive Bid	Estimated Amount Planned To Be Utilized Under Public Works	County Rebuild Alabama Funds or Federal Aid Exchange Funds (List fund type separately for projects involving both CRAFs and FAEFs)	CRAF Amount	FAEF Amount
			Lat.	Long.	Lat.	Long.	Road Improvement Project	Bridge Improvement Project	Project Length (miles)						
Estimated Beginning Balance													\$0.00	\$0.00	
Estimated Annual Revenue													\$1,341,000.00	\$400,000.00	
1	RA-MCP 48-87-20	Dixon Road	34.2756	-86.3112			X	0.011	Replace bridge on Dixon Road over Hog Creek	\$600,000.00	\$0.00	\$600,000.00	FAEF	\$0.00	\$600,000.00
2	RA-MCP 48-91-21	Bethlehem Road	34.1874	-86.3347	34.1876		X	1.566	Resurface and Traffic Stripe Bethlehem Road from Otinger Road to Douglas-Hyatt Road	\$275,109.00	\$0.00	\$275,109.00	CRAF	\$275,109.00	\$0.00
3	RA-MCP 48-92-21	Horton-Nixon Chapel Road	34.2012	-86.2960	34.2024		X	2.602	Widen, Level, Resurface and Traffic Stripe Horton-Nixon Chapel Road from SR75 to Mt. Sinai Road	\$499,442.00	\$0.00	\$499,442.00	CRAF	\$499,442.00	\$0.00
4	RA-MCP 48-93-21	Old Union Road	34.4904	-86.2385	34.5214		X	2.29	Widen, Level, Resurface, and Traffic Stripe Old Union Road from Columbus City Road to Cathedral Caverns Hwy	\$454,690.00	\$0.00	\$454,690.00	CRAF	\$454,690.00	\$0.00
5	RA-MCP 48-94-21	Columbus City Road	34.4606	-86.2334	34.4906		X	2.86	Resurface and Traffic Stripe Columbus City Road from Hwy 79N to Old Union Road	\$613,623.00	\$0.00	\$613,623.00	CRAF	\$613,623.00	\$0.00
Totals/Page Totals			Total Miles Addressed by CTP (Total Mileage Does Not Include Bridge Projects)					9.32	Total CTP Estimated Costs	\$2,442,864.00	\$0.00	\$2,442,864.00	Total CRAF/FAEF Remaining Estimated	(\$501,864.00)	(\$200,000.00)

Note: Any amendments to the CTP shall follow the same guidelines and procedures as the original approval process.

Remarks

FY 2022
COUNTY
TRANSPORTATION PLAN



2.

4.

5.

1.

3.

LEGEND

ROAD AND ROADWAY FEATURES	RAILROADS	PUBLIC SERVICE FACILITIES	CHURCHES, DENOMINATIONS, ETC.
Interstate Highway	Class 1 Railroad	Post Office	Church - any denomination
State Route	Class 2 Railroad	Police Station	Church - Catholic
County Road	Class 3 Railroad	Fire Station	Church - Episcopal
Local Road	Class 4 Railroad	Public Library	Church - Methodist
Unimproved Road	Class 5 Railroad	Public School	Church - Presbyterian
Gravel Road	Class 6 Railroad	Public Hospital	Church - Baptist
Dirt Road	Class 7 Railroad	Public Office	Church - Lutheran
Gravel Shoulder	Class 8 Railroad	Public Agency	Church - Other
Dirt Shoulder	Class 9 Railroad	Public Building	
Gravel	Class 10 Railroad	Public Office	
Dirt	Class 11 Railroad	Public Office	
Gravel	Class 12 Railroad	Public Office	
Dirt	Class 13 Railroad	Public Office	
Gravel	Class 14 Railroad	Public Office	
Dirt	Class 15 Railroad	Public Office	
Gravel	Class 16 Railroad	Public Office	
Dirt	Class 17 Railroad	Public Office	
Gravel	Class 18 Railroad	Public Office	
Dirt	Class 19 Railroad	Public Office	
Gravel	Class 20 Railroad	Public Office	
Dirt	Class 21 Railroad	Public Office	
Gravel	Class 22 Railroad	Public Office	
Dirt	Class 23 Railroad	Public Office	
Gravel	Class 24 Railroad	Public Office	
Dirt	Class 25 Railroad	Public Office	
Gravel	Class 26 Railroad	Public Office	
Dirt	Class 27 Railroad	Public Office	
Gravel	Class 28 Railroad	Public Office	
Dirt	Class 29 Railroad	Public Office	
Gravel	Class 30 Railroad	Public Office	
Dirt	Class 31 Railroad	Public Office	
Gravel	Class 32 Railroad	Public Office	
Dirt	Class 33 Railroad	Public Office	
Gravel	Class 34 Railroad	Public Office	
Dirt	Class 35 Railroad	Public Office	
Gravel	Class 36 Railroad	Public Office	
Dirt	Class 37 Railroad	Public Office	
Gravel	Class 38 Railroad	Public Office	
Dirt	Class 39 Railroad	Public Office	
Gravel	Class 40 Railroad	Public Office	
Dirt	Class 41 Railroad	Public Office	
Gravel	Class 42 Railroad	Public Office	
Dirt	Class 43 Railroad	Public Office	
Gravel	Class 44 Railroad	Public Office	
Dirt	Class 45 Railroad	Public Office	
Gravel	Class 46 Railroad	Public Office	
Dirt	Class 47 Railroad	Public Office	
Gravel	Class 48 Railroad	Public Office	
Dirt	Class 49 Railroad	Public Office	
Gravel	Class 50 Railroad	Public Office	
Dirt	Class 51 Railroad	Public Office	
Gravel	Class 52 Railroad	Public Office	
Dirt	Class 53 Railroad	Public Office	
Gravel	Class 54 Railroad	Public Office	
Dirt	Class 55 Railroad	Public Office	
Gravel	Class 56 Railroad	Public Office	
Dirt	Class 57 Railroad	Public Office	
Gravel	Class 58 Railroad	Public Office	
Dirt	Class 59 Railroad	Public Office	
Gravel	Class 60 Railroad	Public Office	
Dirt	Class 61 Railroad	Public Office	
Gravel	Class 62 Railroad	Public Office	
Dirt	Class 63 Railroad	Public Office	
Gravel	Class 64 Railroad	Public Office	
Dirt	Class 65 Railroad	Public Office	
Gravel	Class 66 Railroad	Public Office	
Dirt	Class 67 Railroad	Public Office	
Gravel	Class 68 Railroad	Public Office	
Dirt	Class 69 Railroad	Public Office	
Gravel	Class 70 Railroad	Public Office	
Dirt	Class 71 Railroad	Public Office	
Gravel	Class 72 Railroad	Public Office	
Dirt	Class 73 Railroad	Public Office	
Gravel	Class 74 Railroad	Public Office	
Dirt	Class 75 Railroad	Public Office	
Gravel	Class 76 Railroad	Public Office	
Dirt	Class 77 Railroad	Public Office	
Gravel	Class 78 Railroad	Public Office	
Dirt	Class 79 Railroad	Public Office	
Gravel	Class 80 Railroad	Public Office	
Dirt	Class 81 Railroad	Public Office	
Gravel	Class 82 Railroad	Public Office	
Dirt	Class 83 Railroad	Public Office	
Gravel	Class 84 Railroad	Public Office	
Dirt	Class 85 Railroad	Public Office	
Gravel	Class 86 Railroad	Public Office	
Dirt	Class 87 Railroad	Public Office	
Gravel	Class 88 Railroad	Public Office	
Dirt	Class 89 Railroad	Public Office	
Gravel	Class 90 Railroad	Public Office	
Dirt	Class 91 Railroad	Public Office	
Gravel	Class 92 Railroad	Public Office	
Dirt	Class 93 Railroad	Public Office	
Gravel	Class 94 Railroad	Public Office	
Dirt	Class 95 Railroad	Public Office	
Gravel	Class 96 Railroad	Public Office	
Dirt	Class 97 Railroad	Public Office	
Gravel	Class 98 Railroad	Public Office	
Dirt	Class 99 Railroad	Public Office	
Gravel	Class 100 Railroad	Public Office	

GENERAL HIGHWAY MAP
MARSHALL COUNTY
ALABAMA

PREPARED BY THE
ALABAMA DEPARTMENT OF TRANSPORTATION
BUREAU OF TRANSPORTATION PLANNING
SURVEYING AND MAPPING DIVISION
IN COOPERATION WITH THE
U.S. DEPARTMENT OF TRANSPORTATION
FEDERAL HIGHWAY ADMINISTRATION

2005