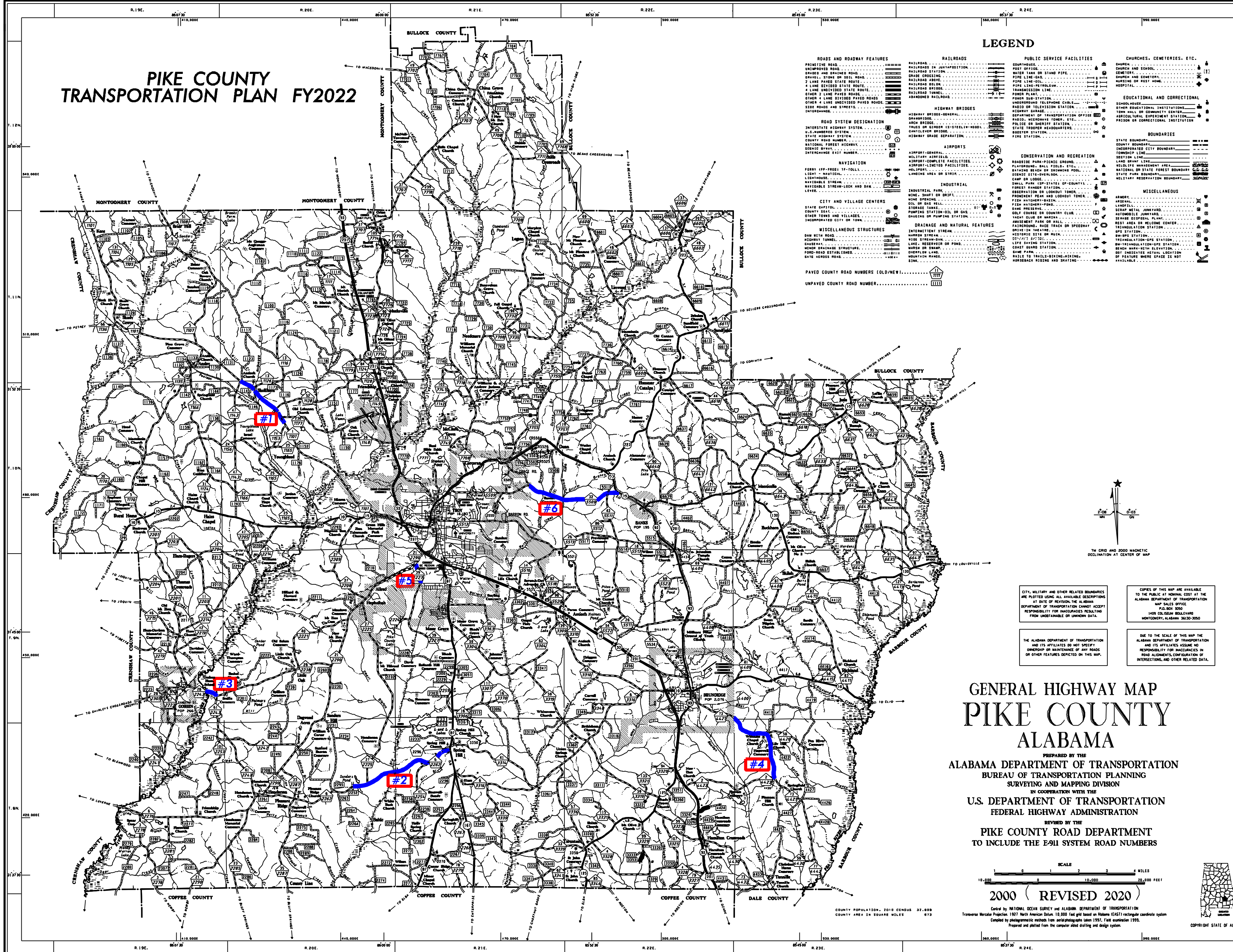


PIKE COUNTY TRANSPORTATION PLAN FY2022

LEGEND

ROADS AND ROADWAY FEATURES UNIMPROVED ROAD GRAVEL AND GRADED ROAD GRAVEL, STONE OR SOIL ROAD 2 LANE PAVED STATE ROUTE 4 LANE DIVIDED STATE ROUTE 4 LANE UNDIVIDED STATE ROUTE OTHER 2 LANE PAVED ROAD OTHER 4 LANE DIVIDED PAVED ROAD OTHER 4 LANE UNDIVIDED PAVED ROAD SIDE ROAD AND SIMILAR INTERCHANGE ROAD SYSTEM DESIGNATION INTERSTATE HIGHWAY SYSTEM U.S. NUMBERED SYSTEM STATE HIGHWAY SYSTEM COUNTY ROAD NUMBER NATIONAL FOREST HIGHWAY SCENIC BYWAY INTERCHANGE EAST NUMBER NAVIGATION FERRY (OFF-ROAD) 1P-TOLL LIGHT - MARITIME LIGHTHOUSE NAUTICAL BELL BUOY NAVIGABLE STREAM-LOCK AND DAM LOCK CITY AND VILLAGE CENTERS STATE CAPITAL COUNTY SEAT OTHER TOWN AND VILLAGES INCORPORATED CITY OR TOWN MISCELLANEOUS STRUCTURES DAM WITH ROAD HIGHWAY TUNNEL CAUSEWAY WINDMILL FORD-ROAD ESTABLISHMENT SATE ACROSS ROAD RAILROADS RAILROAD IN OPERATION RAILROAD STATION GRADE CROSSING RAILROAD BRIDGE RAILROAD BELOW RAILROAD ABOVE RAILROAD TUNNEL ABANDONED RAILROAD HIGHWAY BRIDGES HIGHWAY BRIDGE-GENERAL ARCH BRIDGE TRUSS OR GIRDER (IS-STEEL) BRIDGE CANTILEVER BRIDGE HIGHWAY GRADE SEPARATION AIRPORTS AIRPORT-GENERAL MILITARY AIRFIELD AIRPORT-COMPLET FACILITIES AIRPORT-LIMITED FACILITIES HELIPORT INDUSTRIAL INDUSTRIAL PARK MINE-SHAFT OR DRIFT WINE BREWERY OIL OR GAS WELL STORAGE TANKS PUMPING STATION-OIL OR GAS LANDING AREA OR STRIP LAUNCHING OR PUMPING STATION DRAINAGE AND NATURAL FEATURES PERMANENT STREAM HARBOR STRAIGHT WIDE STREAM-DAM CANAL WINDMILL MARSH OR SWAMP OVERFLOW LAND COAST GUARD STATION SHIP WRECK SHIPWRECK MOUNTAIN RANGE HARBOR BRIDGE AND SHIPWRECK PUBLIC SERVICE FACILITIES POST OFFICE WATER TANK OR STAND PIPE PIPE LINE-OIL PIPE LINE-GAS TRANSDUCER LINE POWER PLANT UNDERGROUND TELEPHONE CABLE RADIO OF TELEVISION STATION HIGHWAY GARRAGE DEPARTMENT OF TRANSPORTATION OFFICE RAILROAD GARRAGE, TOWER, ETC. POLICE OR SHERIFF STATION STATE TROOPER HEADQUARTERS BOOSTER STATION ROBE STATION CONSERVATION AND RECREATION ROADSIDE PARK-PICTIC GROUNDS PLAYGROUND - BALL FIELD, ETC. BATHING BEACH OR SWIMMING POOL SCENIC VIEW-OVERLOOK CAMP OR LODGE SMALL PARK (SP-SITTING SP-GRUNDS) FOREST RANGER STATION OBSERVATION OR LOOKOUT TOWER PROMONTARY PEAK AND LOOKOUT TOWER FISH WATCHING-BASEIN FISH WATCHING-PIECE DAM RESERVOIR YACHT CLUB OR MARINA BOAT RAMP FAIRGROUND, RACE TRACK OR SPEEDWAY DRIVE-IN THEATRE HISTORIC SITE OR RUIN COUNTRY CLUB LIFE SAVING STATION COAST GUARD STATION GAME FARM RAIL TO TRAIL-BEING-WALKING HORSEBACK RIDING AND SHOOTING CHURCHES, CEMETERIES, ETC. CHURCH AND SCHOOL CEMETERY CHURCH AND CEMETERY NURSING OR REST HOME HOSPITAL EDUCATIONAL AND CORRECTIONAL SCHOOLHOUSE OTHER EDUCATIONAL INSTITUTIONS TOWN HALL OR COMMUNITY CENTER AGRICULTURAL EXPERIMENT STATION PRISON OR CORRECTIONAL INSTITUTION BOUNDARIES COUNTY BOUNDARY INCORPORATED CITY BOUNDARY TOWNSHIP LINE SECTION LINE LAND GRANT LINE WELLESLEY RESERVATION AREA NATIONAL OR STATE FOREST BOUNDARY STATE PARK BOUNDARY MILITARY RESERVATION BOUNDARY MISCELLANEOUS ARMY FEDERAL LANDS SCRAP METAL YARD AUTOMOBILE JUNKYARD BEST AREA OR WELCOME CENTER SEWER DISPOSAL PLANT TRAMMATION STATION GPE STATION SHIP WRECK TRANSMISSION-OPS STATION REM-TRANSMISSION-OPS STATION BENCH MARK-WITH ELEVATION SET UNDETERMINED ACTUAL LOCATION OF FEATURE WHERE SPACE IS NOT AVAILABLE
--



CITY, MILITARY AND OTHER RELATED BOUNDARIES ARE PLOTTED USING ALL AVAILABLE DESCRIPTIONS AT DATE OF REVISION. THE ALABAMA DEPARTMENT OF TRANSPORTATION CANNOT ACCEPT RESPONSIBILITY FOR INACCURACIES RESULTING FROM UNOBTAINABLE OR UNKNOWN DATA.

COPIES OF THIS MAP ARE AVAILABLE TO THE PUBLIC AT NOMINAL COST AT THE ALABAMA DEPARTMENT OF TRANSPORTATION MAP SALES OFFICE P.O. BOX 3050 1408 COLLEMAN BOULEVARD MONTGOMERY, ALABAMA 36103-3050

THE ALABAMA DEPARTMENT OF TRANSPORTATION AND ITS AFFILIATES DO NOT SPECIFICALLY ASSUME RESPONSIBILITY FOR INACCURACIES IN ROAD ALIGNMENTS, CONFIGURATION OF INTERSECTIONS, AND OTHER RELATED DATA.

DU TO THE SCALE OF THIS MAP THE ALABAMA DEPARTMENT OF TRANSPORTATION AND ITS AFFILIATES ASSUME NO RESPONSIBILITY FOR INACCURACIES IN ROAD ALIGNMENTS, CONFIGURATION OF INTERSECTIONS, AND OTHER RELATED DATA.

GENERAL HIGHWAY MAP PIKE COUNTY ALABAMA

PREPARED BY THE
ALABAMA DEPARTMENT OF TRANSPORTATION
 BUREAU OF TRANSPORTATION PLANNING
 SURVEYING AND MAPPING DIVISION
 IN COOPERATION WITH THE
U.S. DEPARTMENT OF TRANSPORTATION
 FEDERAL HIGHWAY ADMINISTRATION
 REVISED BY THE
PIKE COUNTY ROAD DEPARTMENT
 TO INCLUDE THE E-911 SYSTEM ROAD NUMBERS

SCALE
 0 1 2 3 4 MILES
 0 1 2 3 4 5 6 7 8 9 10 11 12 13 14 15 16 17 18 19 20 21 22 23 24 25 26 27 28 29 30 FEET

2000 (REVISED 2020)

Compiled by NATIONAL OCEAN SURVEY and ALABAMA DEPARTMENT OF TRANSPORTATION
 Transverse Mercator Projection: 1927 North American Datum, 12,800 Feet Grid based on Alabama (EAST) rectangular coordinate system
 Compiled by photogrammetric methods from aerial-photograms taken 1997. Full examination 1999.
 Prepared and plotted from the computer aided drafting and design system.

