

**BID SUBMITTAL FORM**  
**Alabama County Joint Bid Program**  
**Heavy Equipment – Bid Item: 3.65 CY Wheel Loader - Option B**

Company Name: WARRIOR TRACTOR & EQUIPMENT COMPANY, INC.  
Address: 6801 MCFARLAND BLVD W.  
NORTHPORT, AL 35476  
Bid Submitted by: DAVID SCHAFER  
(Name of company representative)  
Title: DISTRICT SALES MANAGER E-mail address: DSCHAFER@WARRIORTRACTOR.COM  
Phone: 205-339-0300 Fax: 205-333-0101

By submitting this bid, we agree:

Initials

The equipment model number identified below meets the bid specs for this bid item

DRS

That the bid price will be honored for all counties for the period from Jan. 1, 2022 to Dec. 31, 2022.

DRS

The equipment will be delivered at the bid price to all counties participating in the joint bid program.

DRS

The company acknowledges the freight preparation and delivery price is to be included in the total bid price for the standard machine.

DRS

The company representative listed above will be the contact person for purchasing this bid item under the joint bid program.

DRS

The bid is accompanied by a current catalog or model specification document for the model number identified below.

DRS

The bid is accompanied by a copy of the manufacturer's standard warranty as required in the bid specifications.

DRS

The bid includes the e-verify documentation required by Alabama law.

DRS

If awarded the bid, a performance bond will be provided upon request.

DRS

The bid documents include the **Manufacturer's Suggested Retail Price Sheet (MSRP) for the Standard Machine.**

DRS

Total Bid Price for Standard Machine: \$ 195,227.00  
(Total Bid Price for Standard Machine Includes Freight Preparation, Delivery and Standard Warranty Costs) \*

Freight Preparation and Delivery: \$ 7,775.00  
(Included in Standard Machine Bid Price)

Manufacturer's Suggested Retail Price for Standard Machine: \$ 310,535.00

Equipment Model #: JOHN DEERE 624P

Description: WHEEL LOADER

Signature of company representative submitting bid: David R. Schofer

Title: DISTRICT SALES MANAGER

\* **NOTE:** Award will be made based on the total cost of the **Standard Machine**. The total cost of the standard machine is to include the freight preparation, delivery and standard warranty cost. Freight preparation, delivery will be excluded from the total bid price of the standard machine in determining the percentage discount for any available options.

## BID SUBMITTAL FORM: OPTION COST SHEET

By submitting this bid, we agree:

To offer any available options at the percent difference between the Manufacturer's Suggested Retail Price Sheet and the actual bid price on the Standard Machine\*



The bid documents include the **Manufacturer's Suggested Retail Price Sheet (MSRP)** for the Standard Machine



Equipment Model #: JOHN DEERE 624P

Description: WHEEL LOADER

Signature of company representative submitting bid: David R. Schofer

Title: DISTRICT SALES MANAGER

**\*Note:** The percent difference between the **Manufacturer's Suggested Retail Price Sheet (MSRP)** for the standard machine as specified by these **Bid Specifications** and the actual price bid by the vendor will be calculated to determine the percentage discount to be applied to any available options. The bid price of the freight preparation, delivery cost shall be excluded in determining the percentage discount to be applied to available options. Any individual county may choose to add any available option to the standard machine at the percentage discount at the time of purchase.

# **BID SPECIFICATIONS FOR 3.65 CY WHEEL LOADER – OPTION B**

## **GENERAL**

These specifications shall be construed as the minimum acceptable standards for a 3.65-yard wheel loader. Should the manufacturer's current published data or specifications exceed these standards, the manufacturer's standards shall be considered minimum and shall be furnished. All integral parts not specifically mentioned in the scope of these specifications that are necessary to provide a complete working unit shall be furnished. Additionally, the machine offered for bid shall include all standard manufacturer's equipment. The wheel loader must be a new current production model and shall meet all EPA and other applicable standards at the time of manufacture.

The use of specific names and numbers in the specification is not intended to restrict the bidder or any seller or manufacturer, but is intended solely for the purpose of indicating the type, size and quality of equipment considered best adapted to the uses of counties participating in this joint bid.

## **BID SUBMITTAL FORM**

Each bidder must submit his or her bid on the Bid Submittal Form included in the Invitation to Bid package. All written warranties to be submitted shall be attached to the Bid Submittal Form.

## **BID PRICE**

The bid price shall include all destination charges, delivery charges, title fees, rebates, and all other applicable costs and refunds.

## **MANUALS**

Each unit shall be provided with one (1) copy of the operator's manual, one (1) copy of the repair manual and one (1) copy of the current parts manual. Units will not be accepted for delivery until the manuals as outlined above are received by the purchaser.

## **REPLACEMENT PARTS AVAILABILITY**

Parts must be available for 5 years or 7,500 hours of use for the piece of equipment bid. If replacement parts are not delivered within three (3) working days of an order being placed, the bidder will deliver an equivalent machine for the county to use at no cost to the county until such time as the parts are delivered to the county so it can affect repairs on its machine.

## **WARRANTY**

Bidders shall submit a copy of the manufacturer's standard warranty. Warranty shall include service response time of maximum of 36 hours within notification by county.

Yes ☒ No ☐  
Page#   
or  
Attachment ☒



### **BRAKES**

Machine shall have oil cooled single disc-type, adjustment-free service brakes, which are inboard mounted and sealed. Multi-disc parking brake which is driveline mounted and oil cooled.

Yes ☒ No ☐  
Page # 26

### **ENGINE AND RELATED COMPONENTS**

Engine shall be fully equipped, six cylinder, four stroke diesel type with all necessary operating accessories.

Yes ☒ No ☐  
Page # 26

**Engine Shall be designed and manufactured by the machine manufacturer**

Yes ☒ No ☐  
Page # 26

Engine shall meet or exceed current U.S. EPA Tier IV emissions levels.

Yes ☒ No ☐  
Page # 26

Engine shall have a total displacement of not less than **414** cubic inches.

Yes ☒ No ☐  
Page # 26

Engine shall develop at least **186 net HP** at no more than 1800 RPM. Standard engine equipment for rating shall include fan, air cleaner, water pump, lubrication oil pump, fuel pump, muffler and alternator.

Yes ☒ No ☐  
Page # 26

Engine shall develop at least **609** lb-ft minimum net torque at no less than 1400 RPM.

Yes ☒ No ☐  
Page # 26

The coolant level shall be able to be checked via a ground-level sight gauge.

Yes ☒ No ☐  
Page # 26

Machine shall be equipped with 24V electric system for starting and operating, with a minimum 65-amp alternator.

Yes ☒ No ☐  
Page # 26

### **GENERAL MACHINE CONFIGURATION**

Machine basic operating weight shall not be less than **34,500 lbs.** Comparably equipped weight includes lubricants, coolant, full fuel tank, operator, General Purpose bucket with bolt-on cutting edge, 20.5-R25 tires and ROPS cab.

Yes X No       
Page # 26

Machine shall be equipped with a minimum **3.65 cubic yard** ISO/SAE heaped General Purpose bucket with bolt-on cutting edge.

Yes X No       
Page # 29

Machine shall have 20.5 R25 L3 XHA traction-type tires.

Yes X No       
Page # 26

Machine shall have four front and two rear working lights and two rear stop and taillights.

Yes X No       
Page # 40

Machine shall have front fenders and rear platform extensions.

Yes X No       
Page # 40

Machine shall have a back-up alarm.

Yes X No       
Page # 40

### **OPERATOR'S STATION**

Integral ROPS and sound suppressed cab shall be standard and shall meet both current OSHA and MSHA standards for operator and spectator sound.

Yes X No       
Page # 41

Machine shall be equipped with a multilevel warning system, which will signal machine and component malfunctions. System should differentiate between major and minor malfunctions. Warning system shall record occurrences of periodic malfunctions.

Yes X No       
Page # 41

Instrument gauges shall include digital gear range indicator, engine coolant temperature, fuel level, hydraulic oil temperature, speedometer, and transmission oil temperature.

Yes X No       
Page # 41

Operator's seat shall be air suspension-type with adjustments for height, weight, fore/aft and suspension dampening, and adjustable armrests on left and right.

Yes X No       
Page # 41

Cab shall have internally and externally-mounted rearview mirrors.

Yes X No       
Page # 41

Cab shall have air conditioner, heater.

Yes X No       
Page # 41

Machine shall be equipped with a Fire Extinguisher

Yes X No       
Page # 41

Machine shall be equipped with retractable 3" seat belt.

Yes X No       
Page # 41

### **TRANSMISSION/POWERTRAIN**

Transmission and other major power train components, such as the axles, shall be designed and manufactured by the equipment manufacturer.

Yes X No       
Page # 26

Machine shall have a minimum of **5-forward** and **3-reverse**.and **25 mph** maximum forward speed.

Yes X No       
Page # 26

Wheel loader shall be equipped with a crankcase guard.

Yes X No       
Page # 40

### **HYDRAULICS**

Hydraulic pressure taps shall be provided for checking pressure in the hydraulic implements and steering systems.

Yes X No       
Page # 41

Machine shall have a ground-level hydraulic sight gauge showing hydraulic fluid level.

Yes X No       
Page # 41

Shall have a minimum flow of **59 gallons/minute**.

Yes X No       
Page # 26

### **PERFORMANCE**

Straight Tipping Load shall be a minimum of **27,200 lbs.**

Yes X No       
Page # 27

Full Turn Tipping Load shall be a minimum of **23,480 lbs.**

Yes X No       
Page # 27

Bucket Breakout Force shall be a minimum of **26,800 lbs.**

Yes X No       
Page # 27



## STANDARD WARRANTY FOR NEW JOHN DEERE CONSTRUCTION, COMPACT CONSTRUCTION (CCE) FORESTRY, AND UTILITY PRODUCTS – US & Canada

- **Construction & Forestry Products:** 12 months/unlimited hours (whichever occurs first) Full Machine Standard Warranty
- **Compact Construction Equipment (CCE) Products:** 24 months or 2000 hours (whichever occurs first) Full Machine Standard Warranty
- **C&E Series Pull-Type Scrapers:** 6 months Full Machine Standard Warranty
- **DC & DE Pull-Type Scrapers:** 12 months Full Machine Standard Warranty
- **Scraper Tractors:** 24 Months or 2000 Hours (whichever occurs first) Full Machine Standard Warranty
- **Forestry Attachments:** 12 Months or 2000 Hours (whichever occurs first) Full Machine Standard Warranty

The "Standard Warranty" is part of the warranty protection package available from John Deere Construction & Forestry Company (John Deere Limited in Canada) ("John Deere") to purchasers of new John Deere products ("product"):

**STANDARD Warranty** is John Deere's standard new product warranty, described in this document, provided at no additional charge to the purchaser.

**EXTENDED Warranty** is a separate repair contract made available by John Deere for purchasers who wish to complement their Standard Warranty coverage. Complete Extended Warranty details, including coverage options and limitations, are set forth in the Application for Extended Warranty, which is available from authorized John Deere dealers.

**STRUCTURAL Warranty** applies to certain structural components as listed below and as described in this document.

**FACTORY-INSTALLED UNDERCARRIAGE Warranty** applies to certain undercarriage components as listed below and as described in this document.

### A. STANDARD WARRANTY - GENERAL PROVISIONS

John Deere will repair or replace, at its option, any parts (except those specified below) of a new John Deere product that, as delivered to the original retail purchaser(s), are defective in material or workmanship. Performance of this warranty will be free of charge for parts and labor, except as otherwise stated below. Standard Warranty applies only to purchases from John Deere and authorized John Deere dealers and, except as otherwise provided in the next sentence and section L below, is extended only to the original retail purchaser of the product. Remaining Standard Warranty applicable to a used John Deere product is transferred to a subsequent purchaser of the product only if the subsequent purchaser requests a transfer from an authorized John Deere dealer before the product's Standard Warranty expires. Coverage begins on the date of delivery of the product to the original retail purchaser. For purposes of this warranty, a product that has been rented, used for demonstration purposes for 150 or more hours, or otherwise used prior to its original retail purchase has been "used" for the total duration of such use. Warranty statements required by law covering engine emissions-related parts and components are found on a separate written warranty certificate provided to the purchaser at the time of the original retail purchase.

### B. WHAT IS COVERED BY STANDARD WARRANTY -

All parts of a new John Deere product (except those noted in Sections D and E below) are covered during the Standard Warranty period set out above.

### C. EXCLUSIVE REMEDY -

The repair or replacement of covered parts or components that are defective, as provided in Sections A, B, D.2 and D.3 herein, shall be the purchaser's exclusive remedy for any defect in the product. However, if after repeated attempts such repair or replacement fails to correct the performance problem caused by the defect, the purchaser's sole remedy shall be a refund of the amount paid for the product (in exchange for a return of the product), excluding any transportation charges, license fees, taxes and insurance premiums, and less a reasonable allowance for use of the product prior to its return. In no event will the dealer, John Deere or any company affiliated with John Deere be liable for any incidental or consequential damages, including but not limited to loss of profits, rental of substitute equipment or other commercial loss. Correction of defects in the manner provided above shall constitute fulfillment of all liabilities of the Dealer, John Deere, or any company affiliated with John Deere to the purchaser or any other person, whether based upon contract, tort, strict liability, or otherwise. This limitation does not apply to claims for personal injury.



#### D. ITEMS COVERED SEPARATELY -

1. Standard Warranty does not apply to batteries, radios, tires, cameras, or to Cummins, MTU or Detroit Diesel Engines installed in John Deere products, which are covered by separate written warranties.
2. Factory-Installed Undercarriage Warranty covers all non-rubberized factory-installed undercarriage wear components for 3 years or 4,000 hours from the date of delivery to the original retail purchaser, whichever occurs first (unless terminated earlier under Section F, below). For purposes of this warranty, a product that has been rented, used for demonstration purposes for 150 or more hours, or otherwise used prior to its original retail purchase has been "used" for the total duration of such use. In addition to the items listed in section E below, Factory-Installed Undercarriage Warranty does not cover: failures due to wear, machine application, maintenance practices, or improper machine configuration; removal and installation labor; transportation or hauling costs; unapproved parts; non-wear items; and rubberized undercarriage components such as rubber tracks. Warranty claims will be pro-rated based upon wear of the failed component and whether track shoe width is approved by John Deere. Factory-Installed Undercarriage Warranty does not apply to Scraper Tractors.
3. StructurALL Warranty for new John Deere Products (except Compact Excavators & Loaders, Skid-Steer Loaders, Compact Track Loaders, Scraper Tractors, Pull-Type Scrapers, and Forestry Attachments, which are not eligible for StructurALL Warranty) begins at the date of delivery to the original retail purchaser and ends (unless terminated earlier under Section F, below) after three (3) years, or 10,000 hours (whichever occurs first). For purposes of this warranty, a product that has been rented, used for demonstration purposes for 150 or more hours, or otherwise used prior to its original retail purchase has been "used" for the total duration of such use. **StructurALL Warranty applies only to the following structural components listed below as installed on the product at the time of original manufacture.** If a particular component is not listed below it is not covered by StructurALL Warranty.

Arm; Articulation Joint (incl. pins & bushings); Bin Frame; Boom; Carbody; C-Frame\*; Circle Frame; Coupler (John Deere built ONLY); Dipperstick; Draft Frame; Engine Frame; Equipment Frame; Grapple Arch and Grapple Boom; Loader Arm; Loader Frame; Mainframe; Moldboard Lift Arm; NeverGrease™ Pin Joints [Includes steering pin and bushing joints (standard equipment), roller elements (roller bearings) in bucket to boom joints and sliding elements (bushing) for boom and linkage joints (optional equipment)]; Rollover Protection Structure (ROPS); Side Frame; Swing Frame; Track Frame; Undercarriage Frame; X-Frame; Z-bar loader linkage (including bell crank and bucket driver link); Specialty booms and arms marketed as "heavy duty" by John Deere.

*Items Covered by StructurALL for Cut-to-Length Forestry Machines:* Front frame (welded assembly); Rear frame (welded assembly); Crane king post with basement; Middle joint frame; Cabin swing frame; Main Boom

StructurALL Warranty does not apply to:

1. Any product used primarily in extreme duty or severe duty applications such as but not limited to: demolition and wrecking, chemical plant (including fertilizer plants), salt mines, steel mill, land fill and transfer stations, scrap handling, scarifying and other applications that are similarly destructive or similarly heavy duty except specialty booms and arms as stated in Section D.3 above.
2. C-Frames on Crawlers equipped with root rakes or used in forestry applications unless equipped with an "extreme duty" reinforcement package.
3. Cut-to-Length Forestry Heads and Slash Bundler Units.
4. Crawlers equipped with optional side booms.
5. Cut-to-Length Forestry, Excavator, and Log Loader swing bearings.
6. Motor Graders equipped with front- or rear-mounted snow wings.



#### **E. ITEMS NOT COVERED -**

John Deere is NOT responsible for the following:

1. Freight
2. Adjustments to compensate for wear, for periodic maintenance or adjustments that result from normal wear and tear.
3. Damage caused by unapproved adjustments (electronic or mechanical) to machine or machine components outside of published specifications including but not limited to engine, hydraulic components and relief valves.
4. Program updates, calibrations, and pressure adjustments.
5. Additional Labor Time - Above Dealer Labor Rate
6. Additional Cleaning - Above Dealer Labor Rate
7. Rental Fees
8. Depreciation or damage caused by normal wear or application, lack of reasonable and proper maintenance, failure to follow operating instructions, misuse, lack of proper protection during storage, vandalism, negligence, collision, or other accidents.
9. Premiums charged for Overtime Labor
10. Transportation to and from the dealership.
11. Travel time, mileage, or service calls by the dealer.
12. Non-John Deere components or modifications, Rotobec grapples, and attachments installed aftermarket.
13. Shop supplies and maintenance items such as, but not limited to: filters, fuels, oil, hydraulic fluid, lubricants, coolants, conditioners, shop towels, cleaners and degreasers.
14. Torn, cut, or worn hoses.
15. Wear items, such as, but not limited to: body liner, belts, blades, bulbs, lubricated joints (including pins and bushings), dry brakes, brake linings, dry clutch linings, saw blades, chains, skidder grapple shocks, color marking nozzles, and articulation bumpers.
16. Items such as cutting-edge parts, delimbing knives, bucket teeth and rubber track are not warranted for depreciation or damage caused by normal wear, lack of proper maintenance, misuse, failure to follow operating instructions, the elements or accident.
17. Any defect in a non-covered component, or damage to or failure of a covered component caused by a defect in a non-covered component.
18. Secondary damage which occurs from continued operation of a product after recognition of the occurrence of a failure.
19. Parts supplied by or repairs, maintenance or modifications performed by someone other than an authorized John Deere dealer, including any damage caused by such use of parts, repairs, maintenance, or modifications not performed by an authorized John Deere dealer.
20. Topping off fluids when fluid levels fall in the range between low and full
21. Parts/Kits not ordered on machine and installed aftermarket. These parts will be covered by any applicable parts warranty.
22. Attachments installed aftermarket – i.e., Winch not installed at factory.
23. Custom options installed outside the factory – i.e., G.R. Manufacturing option packages.
24. Used Products (except as otherwise provided in section L below).

#### **F. TERMINATION OF WARRANTY-**

John Deere is relieved of its obligations under Standard Warranty, StructurALL Warranty, Factory-Installed Undercarriage Warranty and/or Extended Warranty if:

1. The product is modified or altered in ways not approved by John Deere; or
2. Any unapproved or improperly sized attachment is installed on the product. Approval and attachment size shall be at John Deere's sole discretion. (Consult dealer prior to installing attachments or product modification).
3. The product is moved outside the US and/or Canada.

#### **G. PARTS REPLACED UNDER WARRANTY -**

Only new or remanufactured parts or components furnished or approved by John Deere, will be used if John Deere elects to repair the product. If any such part or component is defective in material or workmanship when installed in the product, John Deere will repair or replace, as it elects, such defective part or component, provided the defect is reported to an authorized John Deere dealer within 90 days of installation or before expiration of the applicable Standard Warranty, Factory-Installed Undercarriage Warranty and/or StructurALL Warranty whichever is later.



#### H. TELEMATICS

*NOTICE: Products may be equipped with telematics hardware and software ("Telematics") that transmit data to John Deere/ Dealer. Purchaser may deactivate Telematics at [www.jdlink.com](http://www.jdlink.com).*

Notwithstanding Purchaser's right, title or interest in the Products, Purchaser agrees that John Deere and Dealer (their affiliates, successors and assigns), without further notice to Purchaser have the right to:

1. Access, use, collect and disclose any data generated by, collected by, or stored in, Products or any hardware or devices interfacing with Products ("Machine Data");
2. Access Machine Data directly through data reporting devices integrated within, or attached to, Products, including Telematics ("Data Reporting Systems"); and
3. Update the Data Reporting Systems software from time to time. Machine Data will only be used in accordance with John Deere's Machine Data Policy, located at [www.JohnDeere.com/MachineDataPolicy](http://www.JohnDeere.com/MachineDataPolicy).

#### I. OBTAINING WARRANTY SERVICE -

To obtain warranty service, the purchaser must request warranty service from a John Deere dealer authorized to sell the product to be serviced. When making such a request, the purchaser must present evidence of the product's delivery date, make the product available at the dealer's place of business, and inform the dealer in what way the purchaser believes the product to be defective. Standard Warranty, Factory-Installed Undercarriage Warranty and/or StructurALL Warranty repairs may be made in the field if the purchaser and servicing dealer so desire. However, John Deere will not be responsible for any charges (such as dealer travel time, mileage or extra labor) that would not have been incurred had the product been repaired at the dealer's place of business.

#### J. NO IMPLIED WARRANTY, CONDITIONS OR OTHER REPRESENTATION -

Where permitted by law, neither John Deere nor any company affiliated with it makes any warranties, representations, conditions or promises, express or implied, as to the quality, performance, or freedom from defect of its products, other than those set forth in this document and **NO IMPLIED WARRANTY OF MERCHANTABILITY, CONDITIONS OR FITNESS IS MADE.**

#### K. NO DEALER WARRANTY -

The selling dealer makes no warranty of its own on any item covered by this warranty and makes no warranty on other items unless the dealer delivers to the purchaser a separate written warranty certificate specifically warranting the item. **The dealer has no authority to make any representation or promise on behalf of John Deere, or to modify the terms or limitations of this warranty in any way.**

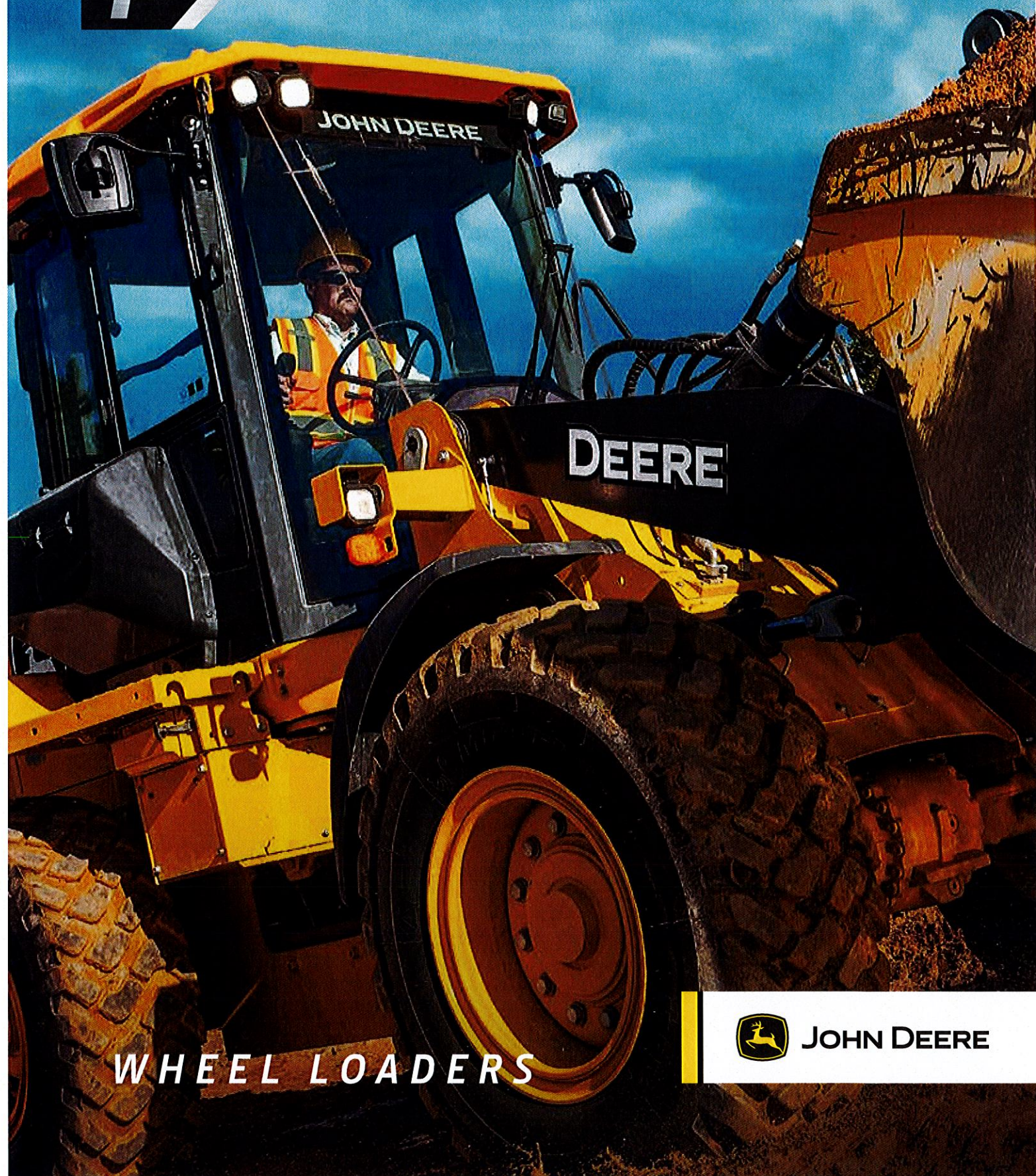
#### L. USED JOHN DEERE PRODUCTS ONLY -

John Deere will transfer remaining Standard Warranty, Factory-Installed Undercarriage Warranty and/or StructurALL Warranty to the purchaser of a used John Deere construction and/or forestry product that has been used for less than the full warranty period provided at the product's original retail purchase. This transfer is not effective until change of ownership is registered by a John Deere dealer. **ALL THE TERMS, INCLUDING LIMITATIONS AND EXCLUSIONS, OF THE JOHN DEERE STANDARD WARRANTY, FACTORY-INSTALLED UNDERCARRIAGE WARRANTY, AND/OR STRUCTURALL WARRANTY ORIGINALLY PROVIDED FOR THE PRODUCT REMAIN IN EFFECT AND APPLICABLE.**



444 / 524 / 544 / 624 / 644 / 724

**P**



**WHEEL LOADERS**



**JOHN DEERE**





**DEERE**

***ELEVATE YOUR  
EXPECTATIONS***



# ABOVE AND BEYOND

## INTRODUCING THE P-TIER WHEEL LOADERS



### INTUITIVE CONTROLS

When your material-handling application needs a heavy-duty lift, add a P-Tier Wheel Loader to your lineup. Combining convenient front-end features with near-parallel lift, spacious operator stations including customizable ergonomic electrohydraulic (EH) controls, and streamlined electrical and hydraulic routing, these versatile and productive mid-size models are designed to help you take your operation to the next level.

#### Take control

Operators can easily control up to six functions without letting go of the ergonomically designed joystick. Two industry-exclusive multifunction buttons can each be programmed to handle any of up to 10 functions selected through the monitor, including bucket vibrate and EH Precision mode.

#### The bucket list

A wide selection of enhanced production buckets with integrated spill guards, curved side cutters, and impressive rollback delivers elevated bucket-fill performance and material retention compared to earlier offerings.

#### Remote diagnostics and support

To maximize uptime and lower costs, JDLink™ telematics provides machine location, utilization data, and alerts to help you maximize productivity and efficiency. JDLink also enables John Deere Connected Support™. Dealers use Expert Alerts based on data from thousands of connected machines to proactively address conditions that may otherwise likely lead to downtime. Your dealer can also monitor machine health and leverage remote diagnostics and programming capability to further diagnose problems and even update machine software without a time-consuming trip to the jobsite.\*

\*Availability varies by region. Options not available in every country.

#### At the forefront

Featuring bucket and linkage designs that improve load leveling, material retention, and visibility, these loaders yield more productivity and performance than previous models.

#### It's easy to see

Large seven-inch in-cab display with easy-on-the-eyes clarity enables intuitive push-button access to key info. Standard rearview camera displays the activity behind the machine on the color LCD screen.

#### On your side

All daily service points including fuel refill are conveniently grouped at ground level on the left side of the machine for easy access. Routing of electrical wire harnesses and hydraulic hoses has been streamlined.

### FIND YOUR FIT



**LEADING EDGE**  
Premium edge with innovative technology



**EXCEPTIONAL PERFORMANCE**  
Advanced features and performance



**RUGGED AND RELIABLE**  
Proven capabilities and value







# 444

*P-TIER WHEEL LOADER*



**VERSATILE BUCKET +  
LINKAGE DESIGNS**





## **DREAM IT AND DO IT.**

Agility and capability combine with performance and reliability to help keep you productive all day long. With a 444 P-Tier Wheel Loader in your fleet, you might as well consider it done.

### **Fork in the road**

Available in 48-, 60-, and 72-inch lengths, improved shaft-style forks enable better visibility to the fork tips compared to previous models.

### **Have a seat**

Spacious and comfortable cab features extra legroom, an improved HVAC system, additional storage, and a more adjustable seat than earlier models.

### **Z-Bar linkage**

Lift path on Z-Bar linkage is near parallel. Better load-leveling capability compared to K-Series models minimizes load rollback, reduces material spillage, and requires fewer manual adjustments. Cross-tube and boom geometry of the Z-Bar linkage has been streamlined to provide a better view to the front attachment.





# OVERACHIEVERS

*ASPIRE TO GO HIGHER.*

With handy front-end features and plenty of productivity-boosting enhancements over previous models, our 524, 544, and 624 P-Tier Wheel Loaders redefine expectations about the heights a utility loader can reach.

## Get carried away

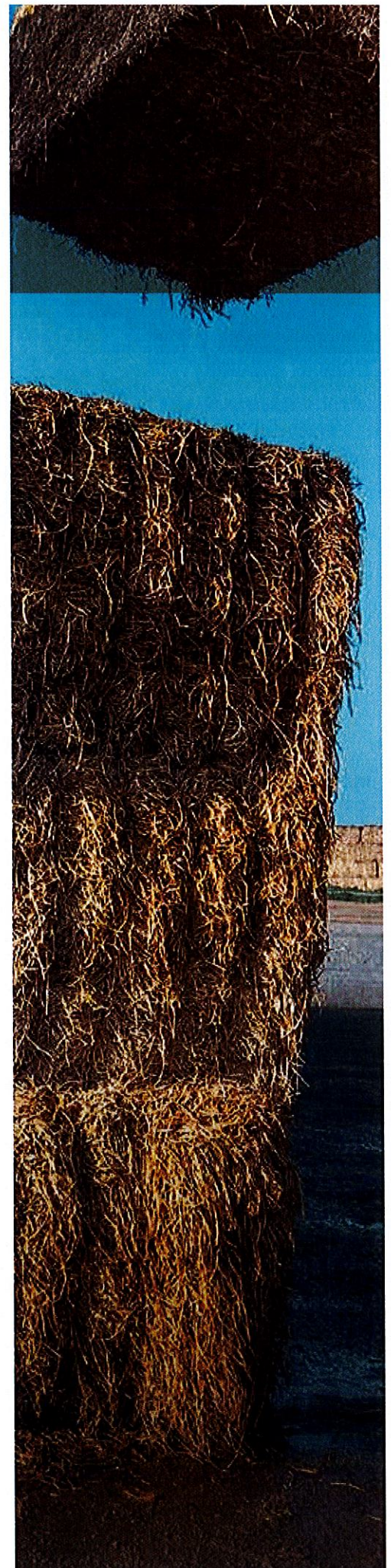
Tool Carrier configuration on the 524 and 624 enables a clear view of the coupler and forks, making it easier to quickly move pipes, logs, and pallets.

## Pretty big plus

High-Lift Plus configuration provides an additional 24 inches of hinge-pin height over standard lift height and 12 inches over the High-Lift model. All three lift heights feature near-parallel lift.

## Fitting in

Improved visibility to the work tool helps reduce spillage as well as cycle and tool-changeover times. It also helps minimize machine damage when working on crowded jobsites or up against walls.







**524 544 624**

*P-TIER WHEEL LOADERS*

**3" MORE LEGROOM**  
THAN K-SERIES CABS





# 644 724

*P-TIER WHEEL LOADERS*

DEERE

724

P



**2 INDUSTRY-EXCLUSIVE  
MULTIFUNCTION BUTTONS**





## **GET AHEAD**

### **MOVING FORWARD.**

Designed to elevate your productivity, the 644 and 724 P-Tier Wheel Loaders help you put your best foot forward.

#### **Reach your potential**

Three additional inches of hinge-pin height on the 724 over the 724K provides more clearance for dumping into high feeders, hoppers, trucks, and wagons.

#### **Smooth operator**

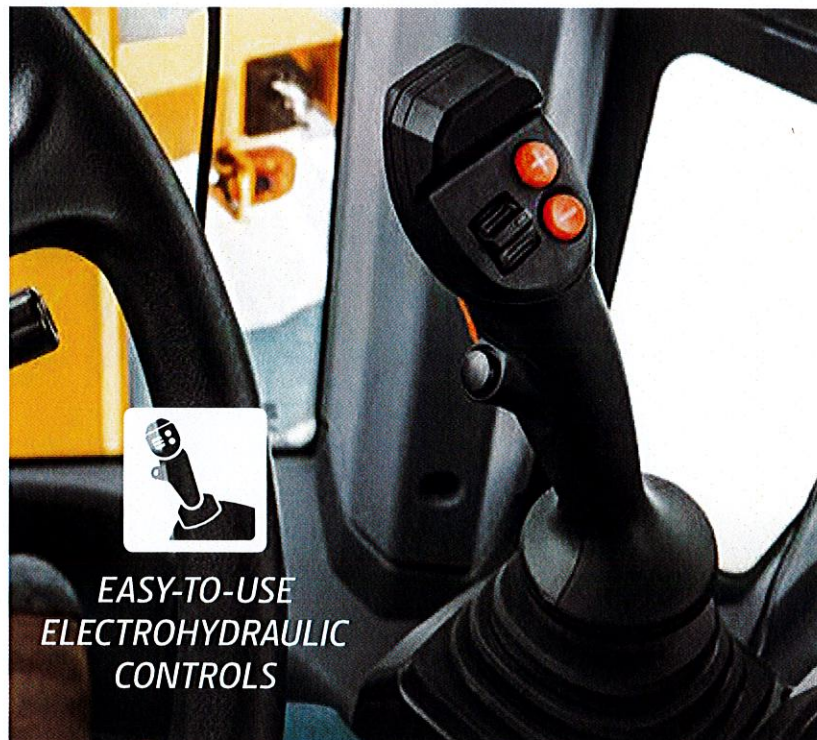
Seat-mounted right-hand joystick features two programmable multi-function buttons and electrohydraulic (EH) controls that are more intuitive to operate compared to our K-Series controls.

#### **In the office**

Roomy cab boasts three more inches of legroom than earlier models. Joystick controls, foot pedals, and sealed-switch module are all ergonomically placed for optimal comfort and convenience.



**EASY-TO-USE  
ELECTROHYDRAULIC  
CONTROLS**





## 544 P-TIER WHEEL LOADER SPECIFICATIONS

While general information, pictures, and descriptions are provided, some illustrations and text may include product options and accessories NOT AVAILABLE in all regions, and in some countries products and accessories may require modifications or additions to ensure compliance with the local regulations of those countries.

Engine		544 P-TIER Z-BAR / HIGH-LIFT / HIGH-LIFT PLUS		
Manufacturer and Model	John Deere PowerTech™ PVS 6068	Gross Peak Torque (ISO 9249)	770 Nm (568 ft.-lb.) at 1,600 rpm	
Non-Road Emission Standard	EPA Final Tier 4/EU Stage V	Net Torque Rise	47%	
Cylinders	6	Fuel System (electronically controlled)	High-pressure common rail	
Valves Per Cylinder	4	Lubrication	Full-flow spin-on filter and integral cooler	
Displacement	6.8 L (414 cu. in.)	Aspiration	Turbocharged, charge air cooled	
Net Peak Power (ISO 9249)	123 kW (166 hp) at 1,700 rpm	Air Cleaner	Under-hood, dual-element dry type, restriction indicator in cab monitor for service	
Gross Peak Power (ISO 9249)	130 kW (174 hp) at 1,700 rpm			
Net Peak Torque (ISO 9249)	740 Nm (546 lb.-ft.) at 1,100 rpm			
Cooling				
Fan Drive	Hydraulically driven, proportionally controlled, fan aft of coolers			
Electrical				
Electrical System	24 volt with 100-amp alternator (optional 130-amp alternator)			
Batteries (2 – 12 volt)	950 CCA (each)			
Transmission System				
Type	Countershaft-type PowerShift™			
Torque Converter	Single stage, single phase			
Shift Control	Electronically modulated, adaptive, load and speed dependent			
Operator Interface	Steering-column or joystick-mounted F-N-R and gear-select lever; kick-down button on hydraulic lever			
Shift Modes	Manual/auto (1st–D or 2nd–D); Quick-Shift button with 2 selectable modes: kick-down or kick-up/down; and 4 clutch cutoff settings			
	Standard 5-Speed With Lockup Torque Converter		Optional 5-Speed Without Lockup Torque Converter	
Maximum Travel Speeds (with 20.5 R 25 tires)	Forward	Reverse	Forward	Reverse
Range 1	6.1 km/h (3.7 mph)	5.9 km/h (3.6 mph)	5.6 km/h (3.5 mph)	6.0 km/h (3.7 mph)
Range 2	12.0 km/h (7.4 mph)	12.7 km/h (7.8 mph)	11.2 km/h (7.0 mph)	11.9 km/h (7.3 mph)
Range 3	18.6 km/h (11.5 mph)	29.4 km/h (18.3 mph)	17.4 km/h (10.8 mph)	27.6 km/h (17.1 mph)
Range 4	27.9 km/h (17.3 mph)	N/A	26.2 km/h (16.2 mph)	N/A
Range 5	40.0 km/h (24.8 mph)	N/A	40.0 km/h (24.8 mph)	N/A
Axles/Brakes				
Final Drives	Heavy-duty inboard-mounted planetary			
Differentials	Hydraulic locking front with conventional rear — standard; dual locking front and rear — optional			
Rear Axle Oscillation, Stop to Stop (with 20.5 R 25 tires)	24 deg. (12 deg. each direction)			
Brakes (conform to ISO 3450)				
Service	Hydraulically actuated, spring-retracted, self-adjusting inboard sun-shaft mounted, oil cooled, single disc			
Parking	Automatic spring applied, hydraulically released, driveline mounted, sealed wet multi disc			
Tires/Wheels (see page 24 for complete tire adjustments)				
	Tread Width	Width Over Tires		
Michelin 20.5 R 25, 1 Star L-3 XHA2	1950 mm (76.8 in.)	2546 mm (100.2 in.)		
Serviceability				
Refill Capacities				
Fuel Tank (with lockable cap)	298 L (79 gal.)	Axle Oil (each)		
Cooling System	29.9 L (31.6 qt.)	Front	16.6 L (17.5 qt.)	
Diesel Exhaust Fluid (DEF)	15.6 L (16.5 qt.)	Rear	18 L (19 qt.)	
Engine Oil With Vertical Spin-On Filter	19.5 L (20.6 qt.)	Hydraulic Reservoir and Filter	82.1 L (21.7 gal.)	
Transmission Reservoir With Vertical Filter	21 L (22.2 qt.)	Park Brake Oil (wet disc)	0.3 L (10 oz.)	
Hydraulic System/Steering				
Pump (loader and steering)	Variable-displacement, axial-piston pump; closed-center, pressure-compensating system			
Maximum Rated Flow at 6895 kPa (1,000 psi) and 2,200 rpm	220 L/m (58 gpm)			
System Relief Pressure (loader and steering)	25 166 kPa (3,650 psi)			
Loader Controls	2-function valve, joystick control or fingertip controls, hydraulic-function enable/disable, optional 3rd- and 4th-function valve with auxiliary lever			
Steering (conforms to ISO 5010)	Steering-column-mounted, twist-grip shift lever; Quick-Shift button on hydraulic lever			
Type	Power, fully hydraulic			
Articulation Angle	80-deg. arc (40 deg. each direction)			
Turning Radius (measured to centerline of outside tire)	5.0 m (16 ft. 5 in.)			



While general information, pictures, and descriptions are provided, some illustrations and text may include product options and accessories NOT AVAILABLE in all regions, and in some countries products and accessories may require modifications or additions to ensure compliance with the local regulations of those countries.

**Hydraulic System/Steering (continued) 544 P-TIER Z-BAR / HIGH-LIFT / HIGH-LIFT PLUS**

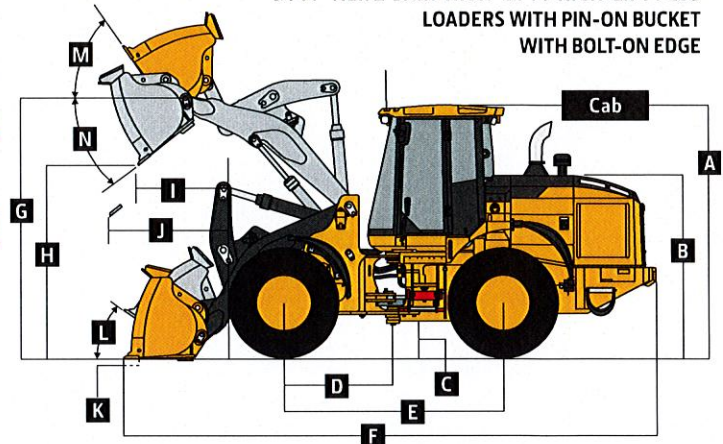
Hydraulic Cycle Times	Z-Bar / High-Lift / High-Lift Plus
Raise	5.5 sec.
Dump	2.2 sec.
Lower (power down)	3.5 sec.
Total	11.2 sec.

**Bucket Capacity Range**

Bucket Type	
Pin-On	2.1–2.5 m <sup>3</sup> (2.75–3.25 cu. yd.)
Coupler	1.9–4.0 m <sup>3</sup> (2.5–5.25 cu. yd.)

**Dimensions and Specifications With Pin-On Bucket With Bolt-On Edge**

544 P-TIER Z-BAR / HIGH-LIFT / HIGH-LIFT PLUS  
LOADERS WITH PIN-ON BUCKET  
WITH BOLT-ON EDGE



	Z-Bar	Z-Bar	High-Lift	High-Lift	High-Lift Plus	High-Lift Plus
Dimensions With Bucket With Bolt-On Edge (Illustration above right)	2.3-m <sup>3</sup> (3.0 cu. yd.) general purpose	2.5-m <sup>3</sup> (3.25 cu. yd.) general purpose	2.1-m <sup>3</sup> (2.75 cu. yd.) general purpose	2.3-m <sup>3</sup> (3.0 cu. yd.) general purpose	2.1-m <sup>3</sup> (2.75 cu. yd.) general purpose	2.3-m <sup>3</sup> (3.0 cu. yd.) general purpose
A Height to Top of Cab	3.33 m (10 ft. 11 in.)	3.33 m (10 ft. 11 in.)	3.33 m (10 ft. 11 in.)	3.33 m (10 ft. 11 in.)	3.33 m (10 ft. 11 in.)	3.33 m (10 ft. 11 in.)
B Hood Height	2.375 m (7 ft. 9 in.)	2.375 m (7 ft. 9 in.)	2.375 m (7 ft. 9 in.)	2.375 m (7 ft. 9 in.)	2.375 m (7 ft. 9 in.)	2.375 m (7 ft. 9 in.)
C Ground Clearance	0.40 m (15.7 in.)	0.40 m (15.7 in.)	0.40 m (15.7 in.)	0.40 m (15.7 in.)	0.40 m (15.7 in.)	0.40 m (15.7 in.)
D Length From Centerline to Front Axle	1.45 m (4 ft. 9 in.)	1.45 m (4 ft. 9 in.)	1.45 m (4 ft. 9 in.)	1.45 m (4 ft. 9 in.)	1.45 m (4 ft. 9 in.)	1.45 m (4 ft. 9 in.)
E Wheelbase	2.93 m (9 ft. 7 in.)	2.93 m (9 ft. 7 in.)	2.93 m (9 ft. 7 in.)	2.93 m (9 ft. 7 in.)	2.93 m (9 ft. 7 in.)	2.93 m (9 ft. 7 in.)
F Overall Length, Bucket on Ground	7.49 m (24 ft. 7 in.)	7.49 m (24 ft. 7 in.)	7.80 m (25 ft. 7 in.)	7.88 m (25 ft. 10 in.)	8.17 m (26 ft. 10 in.)	8.25 m (27 ft. 1 in.)
G Height to Hinge Pin, Fully Raised	3.89 m (12 ft. 9 in.)	3.89 m (12 ft. 9 in.)	4.17 m (13 ft. 8 in.)	4.17 m (13 ft. 8 in.)	4.49 m (14 ft. 9 in.)	4.49 m (14 ft. 9 in.)
H Dump Clearance, 45 deg., Full Height	2.80 m (9 ft. 2 in.)	2.80 m (9 ft. 2 in.)	3.14 m (10 ft. 4 in.)	3.09 m (10 ft. 2 in.)	3.47 m (11 ft. 4 in.)	3.41 m (11 ft. 2 in.)
I Reach, 45-deg. Dump, Full Height	1.01 m (3 ft. 4 in.)	1.01 m (3 ft. 4 in.)	1.09 m (3 ft. 7 in.)	1.14 m (3 ft. 9 in.)	1.13 m (3 ft. 8 in.)	1.19 m (3 ft. 11 in.)
J Reach, 45-deg. Dump, 2.13-m (7 ft. 0 in.) Clearance	1.51 m (4 ft. 11 in.)	1.51 m (4 ft. 11 in.)	1.81 m (5 ft. 11 in.)	1.84 m (6 ft. 0 in.)	2.10 m (6 ft. 11 in.)	2.14 m (7 ft. 0 in.)
K Maximum Digging Depth	0.1 m (4 in.)	0.1 m (4 in.)	0.19 m (8 in.)	0.2 m (8 in.)	0.2 m (8 in.)	0.2 m (8 in.)
L Maximum Rollback at Ground Level	44 deg.	44 deg.	48 deg.	48 deg.	49 deg.	49 deg.
M Maximum Rollback, Boom Fully Raised	60 deg.	60 deg.	60 deg.	60 deg.	61 deg.	61 deg.
N Maximum Bucket Dump Angle, Fully Raised	48 deg.	48 deg.	46 deg.	46 deg.	45 deg.	45 deg.
Loader Clearance Circle, Bucket Carry Position	11.46 m (37 ft. 7 in.)	11.58 m (38 ft. 0 in.)	11.68 m (38 ft. 4 in.)	11.70 m (38 ft. 5 in.)	12.16 m (39 ft. 11 in.)	12.20 m (40 ft. 0 in.)
Specifications With Bucket With Bolt-On Edge						
Capacity, Heaped	2.3 m <sup>3</sup> (3.0 cu. yd.)	2.5 m <sup>3</sup> (3.25 cu. yd.)	2.1 m <sup>3</sup> (2.75 cu. yd.)	2.3 m <sup>3</sup> (3.0 cu. yd.)	2.1 m <sup>3</sup> (2.75 cu. yd.)	2.3 m <sup>3</sup> (3.0 cu. yd.)
Capacity, Struck	1.9 m <sup>3</sup> (2.5 cu. yd.)	2.1 m <sup>3</sup> (2.7 cu. yd.)	1.7 m <sup>3</sup> (2.3 cu. yd.)	1.9 m <sup>3</sup> (2.5 cu. yd.)	1.7 m <sup>3</sup> (2.3 cu. yd.)	1.9 m <sup>3</sup> (2.5 cu. yd.)
Bucket Weight With Bolt-On Cutting Edge	1095 kg (2,415 lb.)	1131 kg (2,493 lb.)	1056 kg (2,327 lb.)	1095 kg (2,415 lb.)	1056 kg (2,327 lb.)	1095 kg (2,415 lb.)
Bucket Width	2.54 m (8 ft. 4 in.)	2.68 m (8 ft. 10 in.)	2.55 m (8 ft. 4 in.)	2.54 m (8 ft. 4 in.)	2.55 m (8 ft. 4 in.)	2.54 m (8 ft. 4 in.)
Breakout Force	13 166 kg (29,026 lb.)	13 145 kg (28,979 lb.)	13 983 kg (30,827 lb.)	13 005 kg (28,672 lb.)	14 138 kg (31,168 lb.)	13 149 kg (28,988 lb.)
Tipping Load, Straight, No Tire Deflection	11 139 kg (24,557 lb.)	11 097 kg (24,464 lb.)	9699 kg (21,384 lb.)	9591 kg (21,145 lb.)	8630 kg (19,026 lb.)	8537 kg (18,820 lb.)
Tipping Load, Straight, With Tire Deflection	10 533 kg (23,221 lb.)	10 491 kg (23,129 lb.)	9231 kg (20,351 lb.)	9120 kg (20,106 lb.)	8244 kg (18,175 lb.)	8145 kg (17,957 lb.)
Tipping Load, 40-deg. Full Turn, No Tire Deflection	9653 kg (21,281 lb.)	9612 kg (21,190 lb.)	8374 kg (18,460 lb.)	8274 kg (18,241 lb.)	7410 kg (16,336 lb.)	7323 kg (16,145 lb.)
Tipping Load, 40-deg. Full Turn, With Tire Deflection	8865 kg (19,544 lb.)	8823 kg (19,451 lb.)	7755 kg (17,097 lb.)	7650 kg (16,865 lb.)	6891 kg (15,192 lb.)	6807 kg (15,007 lb.)
Rated Operating Load, 50% Full-Turn Tipping Load, No Tire Deflection (conforms to ISO 14397-1)*	4827 kg (10,641 lb.)	4806 kg (10,595 lb.)	4187 kg (9,230 lb.)	4137 kg (9,120 lb.)	3705 kg (8,168 lb.)	3662 kg (8,073 lb.)
Rated Operating Load, 50% Full-Turn Tipping Load, With Tire Deflection (conforms to ISO 14397-1)*	4433 kg (9,772 lb.)	4412 kg (9,726 lb.)	3878 kg (8,548 lb.)	3825 kg (8,433 lb.)	3446 kg (7,596 lb.)	3404 kg (7,503 lb.)
Operating Weight	13 844 kg (30,520 lb.)	13 879 kg (30,598 lb.)	13 992 kg (30,847 lb.)	14 032 kg (30,935 lb.)	14 178 kg (31,257 lb.)	14 218 kg (31,345 lb.)

Loader operating information is based on machine with identified linkage and standard equipment, PowerTech PVS 6068 (EPA Final Tier 4/EU Stage VI) engine, ROPS cab, rear cast bumper/counterweight, transmission side-frame guards, bottom guards, standard tires, full fuel tank, and 79-kg (175 lb.) operator. This information is affected by changes in tires, ballast, and different attachments.

\*Rated operating capacity based on Deere attachments only.



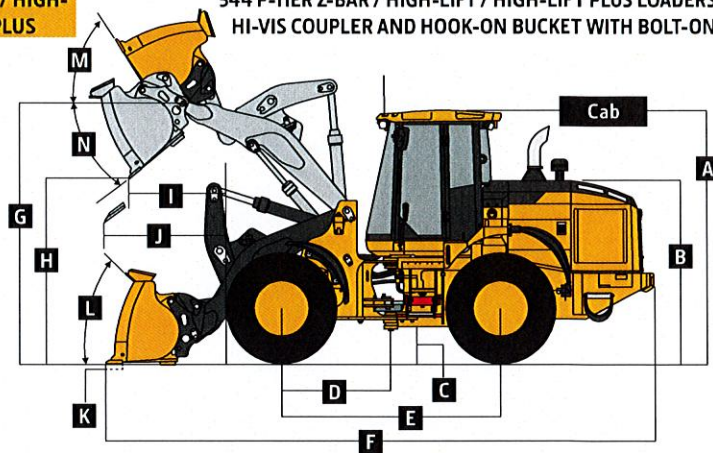
# 544 P TIER

While general information, pictures, and descriptions are provided, some illustrations and text may include product options and accessories NOT AVAILABLE in all regions, and in some countries products and accessories may require modifications or additions to ensure compliance with the local regulations of those countries.

Dimensions and Specifications With Hi-Vis  
Coupler and Hook-On Bucket With Bolt-On Edge

544 P-TIER Z-BAR / HIGH-  
LIFT / HIGH-LIFT PLUS

544 P-TIER Z-BAR / HIGH-LIFT / HIGH-LIFT PLUS LOADERS WITH  
HI-VIS COUPLER AND HOOK-ON BUCKET WITH BOLT-ON EDGE



	Z-Bar 2.3-m³ (3.0 cu. yd.) general	Z-Bar 2.5-m³ (3.25 cu. yd.) general	Z-Bar 3.4-m³ (4.5 cu. yd.) light material	High-Lift 2.1-m³ (2.75 cu. yd.) general	High-Lift 2.3-m³ (3.0 cu. yd.) general	High-Lift 3.1-m³ (4.0 cu. yd.) light material	High-Lift Plus 1.9-m³ (2.5 cu. yd.) general	High-Lift Plus 3.1-m³ (4.0 cu. yd.) light material
<b>A</b> Height to Top of Cab	3.33 m (10 ft. 11 in.)	3.33 m (10 ft. 11 in.)	3.33 m (10 ft. 11 in.)	3.33 m (10 ft. 11 in.)	3.33 m (10 ft. 11 in.)	3.33 m (10 ft. 11 in.)	3.33 m (10 ft. 11 in.)	3.33 m (10 ft. 11 in.)
<b>B</b> Hood Height	2.375 m (7 ft. 9 in.)	2.375 m (7 ft. 9 in.)	2.375 m (7 ft. 9 in.)	2.375 m (7 ft. 9 in.)	2.375 m (7 ft. 9 in.)	2.375 m (7 ft. 9 in.)	2.375 m (7 ft. 9 in.)	2.375 m (7 ft. 9 in.)
<b>C</b> Ground Clearance	0.40 m (15.7 in.)	0.40 m (15.7 in.)	0.40 m (15.7 in.)	0.40 m (15.7 in.)	0.40 m (15.7 in.)	0.40 m (15.7 in.)	0.40 m (15.7 in.)	0.40 m (15.7 in.)
<b>D</b> Length From Centerline to Front Axle	1.45 m (4 ft. 9 in.)	1.45 m (4 ft. 9 in.)	1.45 m (4 ft. 9 in.)	1.45 m (4 ft. 9 in.)	1.45 m (4 ft. 9 in.)	1.45 m (4 ft. 9 in.)	1.45 m (4 ft. 9 in.)	1.45 m (4 ft. 9 in.)
<b>E</b> Wheelbase	2.93 m (9 ft. 7 in.)	2.93 m (9 ft. 7 in.)	2.93 m (9 ft. 7 in.)	2.93 m (9 ft. 7 in.)	2.93 m (9 ft. 7 in.)	2.93 m (9 ft. 7 in.)	2.93 m (9 ft. 7 in.)	2.93 m (9 ft. 7 in.)
<b>F</b> Overall Length, Bucket on Ground	7.56 m (24 ft. 10 in.)	7.64 m (25 ft. 1 in.)	7.83 m (25 ft. 8 in.)	7.95 m (26 ft. 1 in.)	7.95 m (26 ft. 1 in.)	8.08 m (26 ft. 6 in.)	8.23 m (27 ft. 0 in.)	8.45 m (27 ft. 9 in.)
<b>G</b> Height to Hinge Pin, Fully Raised	3.89 m (12 ft. 9 in.)	3.89 m (12 ft. 9 in.)	3.89 m (12 ft. 9 in.)	4.17 m (13 ft. 8 in.)	4.17 m (13 ft. 8 in.)	4.17 m (13 ft. 8 in.)	4.49 m (14 ft. 9 in.)	4.49 m (14 ft. 9 in.)
<b>H</b> Dump Clearance, 45 deg., Full Height	2.76 m (9 ft. 1 in.)	2.70 m (8 ft. 10 in.)	2.58 m (8 ft. 6 in.)	3.04 m (10 ft. 0 in.)	3.04 m (10 ft. 0 in.)	2.96 m (9 ft. 9 in.)	3.43 m (11 ft. 3 in.)	3.28 m (10 ft. 9 in.)
<b>I</b> Reach, 45-deg. Dump, Full Height	1.06 m (3 ft. 6 in.)	1.12 m (3 ft. 8 in.)	1.25 m (4 ft. 1 in.)	1.19 m (3 ft. 11 in.)	1.19 m (3 ft. 11 in.)	1.29 m (4 ft. 3 in.)	1.17 m (3 ft. 10 in.)	1.33 m (4 ft. 5 in.)
<b>J</b> Reach, 45-deg. Dump, 2.13-m (7 ft. 0 in.) Clearance	1.54 m (5 ft. 1 in.)	1.56 m (5 ft. 1 in.)	1.62 m (5 ft. 4 in.)	1.87 m (6 ft. 2 in.)	1.87 m (6 ft. 2 in.)	1.92 m (6 ft. 4 in.)	2.13 m (7 ft. 0 in.)	2.23 m (7 ft. 4 in.)
<b>K</b> Maximum Digging Depth	0.1 m (4 in.)	0.11 m (4 in.)	0.11 m (5 in.)	0.2 m (8 in.)	0.2 m (8 in.)	0.2 m (8 in.)	0.2 m (8 in.)	0.21 m (8 in.)
<b>L</b> Maximum Rollback at Ground Level	44 deg.	44 deg.	44 deg.	48 deg.	48 deg.	48 deg.	49 deg.	49 deg.
<b>M</b> Maximum Rollback, Boom Fully Raised	60 deg.	60 deg.	60 deg.	60 deg.	60 deg.	60 deg.	61 deg.	61 deg.
<b>N</b> Maximum Bucket Dump Angle, Fully Raised	48 deg.	48 deg.	48 deg.	46 deg.	46 deg.	46 deg.	45 deg.	45 deg.
Loader Clearance Circle, Bucket Carry Position	11.60 m (38 ft. 1 in.)	11.60 m (38 ft. 0 in.)	11.88 m (39 ft. 0 in.)	11.78 m (38 ft. 8 in.)	11.86 m (38 ft. 11 in.)	12.22 m (40 ft. 1 in.)	12.12 m (39 ft. 9 in.)	12.62 m (41 ft. 5 in.)
<b>Specifications With Bucket With Bolt-On Edge</b>								
Capacity, Heaped	2.3 m³ (3.0 cu. yd.)	2.5 m³ (3.25 cu. yd.)	3.4 m³ (4.5 cu. yd.)	2.1 m³ (2.75 cu. yd.)	2.3 m³ (3.0 cu. yd.)	3.1 m³ (4.0 cu. yd.)	1.9 m³ (2.5 cu. yd.)	3.1 m³ (4.0 cu. yd.)
Capacity, Struck	1.9 m³ (2.4 cu. yd.)	2.1 m³ (2.7 cu. yd.)	2.9 m³ (3.8 cu. yd.)	1.9 m³ (2.4 cu. yd.)	1.9 m³ (2.4 cu. yd.)	2.5 m³ (3.3 cu. yd.)	1.6 m³ (2.1 cu. yd.)	2.5 m³ (3.3 cu. yd.)
Bucket Weight With Bolt-On Cutting Edge	1489 kg (3,283 lb.)	1537 kg (3,388 lb.)	1747 kg (3,850 lb.)	1454 kg (3,205 lb.)	1489 kg (3,283 lb.)	1683 kg (3,711 lb.)	1385 kg (3,052 lb.)	1683 kg (3,711 lb.)
Bucket Width	2.68 m (8 ft. 10 in.)	2.68 m (8 ft. 10 in.)	2.89 m (9 ft. 6 in.)	2.55 m (8 ft. 4 in.)	2.68 m (8 ft. 10 in.)	2.89 m (9 ft. 6 in.)	2.55 m (8 ft. 4 in.)	2.89 m (9 ft. 6 in.)
Breakout Force	12 307 kg (27,131 lb.)	11 539 kg (25,439 lb.)	10 013 kg (22,074 lb.)	12 179 kg (26,849 lb.)	12 155 kg (26,797 lb.)	10 907 kg (24,045 lb.)	13 305 kg (29,333 lb.)	11 028 kg (24,313 lb.)



## Dimensions and Specifications With Hi-Vis Coupler and Hook-On Bucket With Bolt-On Edge (continued)

### 544 P-TIER Z-BAR / HIGH-LIFT / HIGH-LIFT PLUS

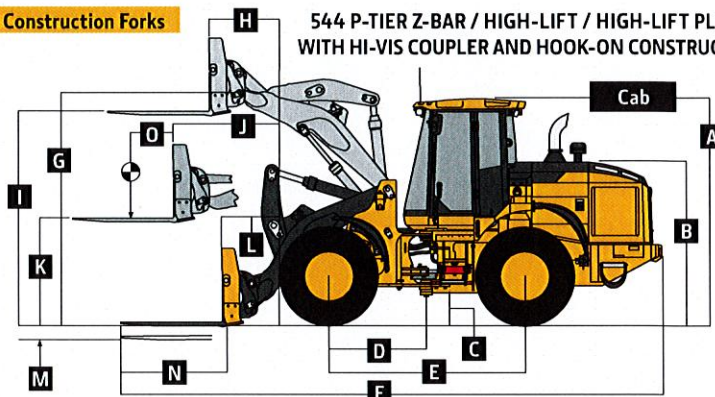
	Z-Bar 2.3-m <sup>3</sup> (3.0 cu. yd.) general	Z-Bar 2.5-m <sup>3</sup> (3.25 cu. yd.) general	Z-Bar 3.4-m <sup>3</sup> (4.5 cu. yd.) light material	High-Lift 2.1-m <sup>3</sup> (2.75 cu. yd.) general	High-Lift 2.3-m <sup>3</sup> (3.0 cu. yd.) general	High-Lift 3.1-m <sup>3</sup> (4.0 cu. yd.) light material	High-Lift Plus 1.9-m <sup>3</sup> (2.5 cu. yd.) general	High-Lift Plus 3.1-m <sup>3</sup> (4.0 cu. yd.) light material
<b>Specifications With Bucket With Bolt-On Edge (continued) (illustration at left)</b>								
Tipping Load, Straight, No Tire Deflection	10 362 kg (22,844 lb.)	10 250 kg (22,597 lb.)	9912 kg (21,853 lb.)	8963 kg (19,759 lb.)	8910 kg (19,642 lb.)	8663 kg (19,099 lb.)	8085 kg (17,825 lb.)	7679 kg (16,614 lb.)
Tipping Load, Straight, With Tire Deflection	9789 kg (21,581 lb.)	9675 kg (21,330 lb.)	9321 kg (20,549 lb.)	8508 kg (18,757 lb.)	8460 kg (18,651 lb.)	8199 kg (18,076 lb.)	7713 kg (17,004 lb.)	7290 kg (15,774 lb.)
Tipping Load, 40-deg. Full Turn, No Tire Deflection	8931 kg (19,690 lb.)	8827 kg (19,459 lb.)	8499 kg (18,736 lb.)	7686 kg (16,945 lb.)	7635 kg (16,833 lb.)	7390 kg (16,293 lb.)	6899 kg (15,209 lb.)	6501 kg (14,040 lb.)
Tipping Load, 40-deg. Full Turn, with Tire Deflection	8181 kg (18,036 lb.)	8073 kg (17,798 lb.)	7731 kg (17,044 lb.)	7083 kg (15,615 lb.)	7035 kg (15,510 lb.)	6771 kg (14,927 lb.)	6393 kg (14,094 lb.)	5988 kg (12,884 lb.)
Rated Operating Load, 50% Full-Turn Tipping Load, No Tire Deflection (conforms to ISO 14397-1)*	4466 kg (9,845 lb.)	4413 kg (9,730 lb.)	4249 kg (9,368 lb.)	3843 kg (8,473 lb.)	3818 kg (8,417 lb.)	3695 kg (8,146 lb.)	3449 kg (7,604 lb.)	3251 kg (7,020 lb.)
Rated Operating Load, 50% Full-Turn Tipping Load, With Tire Deflection (conforms to ISO 14397-1)*	4091 kg (9,018 lb.)	4037 kg (8,899 lb.)	3866 kg (8,522 lb.)	3542 kg (7,808 lb.)	3518 kg (7,755 lb.)	3386 kg (7,464 lb.)	3197 kg (7,047 lb.)	2994 kg (6,442 lb.)
Operating Weight	14 258 kg (31,433 lb.)	14 305 kg (31,538 lb.)	14 515 kg (32,000 lb.)	14 411 kg (31,771 lb.)	14 446 kg (31,849 lb.)	14 641 kg (32,277 lb.)	14 528 kg (32,029 lb.)	14 827 kg (32,827 lb.)

Loader operating information is based on machine with identified linkage and standard equipment, PowerTech PVS 6068 (EPA Final Tier 4/EU Stage V) engine, ROPS cab, rear cast bumper/counterweight, transmission side-frame guards, bottom guards, standard tires, full fuel tank, and 79-kg (175 lb.) operator. This information is affected by changes in tires, ballast, and different attachments.

\*Rated operating capacity based on Deere attachments only.

## Dimensions and Specifications With Hi-Vis Coupler and Hook-On Construction Forks

### 544 P-TIER Z-BAR / HIGH-LIFT / HIGH-LIFT PLUS LOADERS WITH HI-VIS COUPLER AND HOOK-ON CONSTRUCTION FORKS



	Z-Bar 1.52-m (60 in.) tine length	Z-Bar 1.83-m (72 in.) tine length	High-Lift 1.52-m (60 in.) tine length	High-Lift 1.83-m (72 in.) tine length	High-Lift Plus 1.52-m (60 in.) tine length	High-Lift Plus 1.83-m (72 in.) tine length
<b>Dimensions With Forks (illustration above right)</b>						
A Height to Top of Cab	3.33 m (10 ft. 11 in.)	3.33 m (10 ft. 11 in.)	3.33 m (10 ft. 11 in.)	3.33 m (10 ft. 11 in.)	3.33 m (10 ft. 11 in.)	3.33 m (10 ft. 11 in.)
B Hood Height	2.375 m (7 ft. 9 in.)	2.375 m (7 ft. 9 in.)	2.375 m (7 ft. 9 in.)	2.375 m (7 ft. 9 in.)	2.375 m (7 ft. 9 in.)	2.375 m (7 ft. 9 in.)
C Ground Clearance	0.40 m (15.7 in.)	0.40 m (15.7 in.)	0.40 m (15.7 in.)	0.40 m (15.7 in.)	0.40 m (15.7 in.)	0.40 m (15.7 in.)
D Length From Centerline to Front Axle	1.45 m (4 ft. 9 in.)	1.45 m (4 ft. 9 in.)	1.45 m (4 ft. 9 in.)	1.45 m (4 ft. 9 in.)	1.45 m (4 ft. 9 in.)	1.45 m (4 ft. 9 in.)
E Wheelbase	2.93 m (9 ft. 7 in.)	2.93 m (9 ft. 7 in.)	2.93 m (9 ft. 7 in.)	2.93 m (9 ft. 7 in.)	2.93 m (9 ft. 7 in.)	2.93 m (9 ft. 7 in.)
F Overall Length, Forks on Ground	8.29 m (27 ft. 2 in.)	8.59 m (28 ft. 2 in.)	8.68 m (28 ft. 6 in.)	8.98 m (29 ft. 6 in.)	9.04 m (29 ft. 8 in.)	9.35 m (30 ft. 8 in.)
G Height to Hinge Pin, Fully Raised	3.89 m (12 ft. 9 in.)	3.89 m (12 ft. 9 in.)	4.17 m (13 ft. 8 in.)	4.17 m (13 ft. 8 in.)	4.49 m (14 ft. 9 in.)	4.49 m (14 ft. 9 in.)
H Reach, Fully Raised	0.80 m (31 in.)	0.80 m (31 in.)	0.92 m (3 ft. 0 in.)	0.92 m (3 ft. 0 in.)	0.97 m (3 ft. 2 in.)	0.97 m (3 ft. 2 in.)
I Fork Height, Fully Raised	3.56 m (11 ft. 8 in.)	3.56 m (11 ft. 8 in.)	3.84 m (12 ft. 7 in.)	3.84 m (12 ft. 7 in.)	4.16 m (13 ft. 8 in.)	4.16 m (13 ft. 8 in.)
J Maximum Reach, Fork Level	1.59 m (5 ft. 3 in.)	1.59 m (5 ft. 3 in.)	1.89 m (6 ft. 2 in.)	1.89 m (6 ft. 2 in.)	2.16 m (7 ft. 1 in.)	2.16 m (7 ft. 1 in.)
K Fork Height, Maximum Reach	1.66 m (5 ft. 5 in.)	1.66 m (5 ft. 5 in.)	1.66 m (5 ft. 5 in.)	1.66 m (5 ft. 5 in.)	1.66 m (5 ft. 5 in.)	1.66 m (5 ft. 5 in.)
L Reach, Ground Level	1.03 m (3 ft. 5 in.)	1.03 m (3 ft. 5 in.)	1.40 m (4 ft. 7 in.)	1.40 m (4 ft. 7 in.)	1.72 m (5 ft. 8 in.)	1.72 m (5 ft. 8 in.)
M Depth Below Ground	91 mm (4 in.)	91 mm (4 in.)	190 mm (7 in.)	190 mm (7 in.)	195 mm (8 in.)	195 mm (8 in.)
N Tine Length	1.52 m (60 in.)	1.83 m (72 in.)	1.52 m (60 in.)	1.83 m (72 in.)	1.52 m (60 in.)	1.83 m (72 in.)
O Load Position, 50% Tine Length	0.76 m (30 in.)	0.91 m (3 ft. 0 in.)	0.76 m (30 in.)	0.91 m (3 ft. 0 in.)	0.76 m (30 in.)	0.91 m (3 ft. 0 in.)



## Dimensions and Specifications With Hi-Vis Coupler and Hook-On Construction Forks (continued)

### 544 P-TIER Z-BAR / HIGH-LIFT / HIGH-LIFT PLUS

	Z-Bar	Z-Bar	High-Lift	High-Lift	High-Lift Plus	High-Lift Plus
<b>Specifications With Forks</b> (illustration on previous page)	1.52-m (60 in.)	1.83-m (72 in.)	1.52-m (60 in.)	1.83-m (72 in.)	1.52-m (60 in.)	1.83-m (72 in.)
	tine length	tine length	tine length	tine length	tine length	tine length
Tipping Load, Straight, No Tire Deflection	7263 kg (16,013 lb.)	6852 kg (15,107 lb.)	6480 kg (14,287 lb.)	6132 kg (13,520 lb.)	5909 kg (13,027 lb.)	5604 kg (12,355 lb.)
Tipping Load, Straight, With Tire Deflection	7068 kg (15,582 lb.)	6669 kg (14,703 lb.)	6309 kg (13,909 lb.)	5973 kg (13,168 lb.)	5751 kg (12,679 lb.)	5451 kg (12,017 lb.)
Tipping Load, 40-deg. Full Turn, No Tire Deflection	6261 kg (13,804 lb.)	5897 kg (13,001 lb.)	5556 kg (12,249 lb.)	5248 kg (11,569 lb.)	5033 kg (11,096 lb.)	4763 kg (10,501 lb.)
Tipping Load, 40-deg. Full Turn, With Tire Deflection	5991 kg (13,208 lb.)	5649 kg (12,454 lb.)	5319 kg (11,726 lb.)	5031 kg (11,091 lb.)	4830 kg (10,648 lb.)	4566 kg (10,066 lb.)
Rated Operating Load, 50% Full-Turn Tipping Load, With Tire Deflection (conforms to ISO 14397-1 and SAE J1197)*	2996 kg (6,604 lb.)	2825 kg (6,227 lb.)	2660 kg (5,863 lb.)	2516 kg (5,546 lb.)	2415 kg (5,324 lb.)	2283 kg (5,033 lb.)
Rated Operating Load, Rough Terrain, 60% Full-Turn Tipping Load, With Tire Deflection (conforms to EN474-3)*	3595 kg (7,925 lb.)	3389 kg (7,472 lb.)	3191 kg (7,036 lb.)	3019 kg (6,655 lb.)	2898 kg (6,389 lb.)	2740 kg (6,040 lb.)
Rated Operating Load, Firm and Level Ground, 80% Full-Turn Tipping Load, With Tire Deflection (conforms to EN474-3)*	4793 kg (10,566 lb.)	4519 kg (9,963 lb.)	4255 kg (9,381 lb.)	4025 kg (8,873 lb.)	3864 kg (8,519 lb.)	3653 kg (8,053 lb.)
Operating Weight	14 108 kg (31,103 lb.)	14 168 kg (31,236 lb.)	14 297 kg (31,520 lb.)	14 357 kg (31,652 lb.)	14 483 kg (31,930 lb.)	14 544 kg (32,063 lb.)

Loader operating information is based on machine with identified linkage and standard equipment, PowerTech PVS 6068 (EPA Final Tier 4/EU Stage V) engine, ROPS cab, rear cast bumper/counterweight, transmission side-frame guards, bottom guards, standard tires, full fuel tank, and 79-kg (175 lb.) operator. This information is affected by changes in tires, ballast, and different attachments.

\*Rated operating capacity based on Deere attachments only.

### Adjustments to Operating Weights and Tipping Loads With Buckets

Adjustments to operating weights, tipping loads, and tires are based on Z-Bar machine with pin-on 2.3-m<sup>3</sup> (3.0 cu. yd.) general-purpose bucket with bolt-on cutting edge, ROPS cab, rear cast bumper/counterweight, transmission side-frame guards, bottom guards, standard tires, full fuel tank, and 79-kg (175 lb.) operator\*

Add (+) or deduct (-) kg (lb.) as indicated	Operating Weight	Tipping Load, Straight	Tipping Load, 40-deg. Full Turn	Tread Width	Width Over Tires	Vertical Height
for loaders with 3-piece rims						
Michelin 20.5 R 25, 1 Star L-3 XHA2	0 kg (0 lb.)	0 kg (0 lb.)	0 kg (0 lb.)	0 mm (0 in.)	0 mm (0 in.)	0 mm (0 in.)
Bridgestone 20.5 R 25, 1 Star L-3 VJT	+4 kg (+9 lb.)	+3 kg (+6 lb.)	+2 kg (+5 lb.)	0 mm (0 in.)	+2 mm (+0.1 in.)	-41 mm (-1.6 in.)
Titan 20.5 R 25, 1 Star L-3 STL3	+11 kg (+23 lb.)	+7 kg (+16 lb.)	+7 kg (+14 lb.)	0 mm (0 in.)	-7 mm (-0.3 in.)	-5 mm (-0.2 in.)
Michelin 20.5 R 25, 1 Star L-2 XTLA	-152 kg (-335 lb.)	-107 kg (-235 lb.)	-94 kg (-207 lb.)	0 mm (0 in.)	+4 mm (+0.2 in.)	-11 mm (-0.4 in.)
Bridgestone 20.5 R 25, 1 Star L-2 VUT	-65 kg (-144 lb.)	-46 kg (-101 lb.)	-40 kg (-89 lb.)	0 mm (0 in.)	+3 mm (-0.1 in.)	-10 mm (-0.4 in.)
Titan 20.5 R 25, 1 Star L-2 TGD2	-85 kg (-188 lb.)	-60 kg (-132 lb.)	-53 kg (-116 lb.)	0 mm (0 in.)	-7 mm (-0.3 in.)	-10 mm (-0.4 in.)
Titan 20.5-25, 16 PR L-2	-245 kg (-541 lb.)	-172 kg (-379 lb.)	-152 kg (-335 lb.)	0 mm (0 in.)	+8 mm (+0.3 in.)	-2 mm (-0.1 in.)
Firestone 20.5-25, 16 PR L-2 SGG LD	-280 kg (-617 lb.)	-196 kg (-433 lb.)	-173 kg (-382 lb.)	0 mm (0 in.)	+5 mm (+0.2 in.)	-1 mm (0 in.)
Titan 20.5-25, 12 PR L-2	-266 kg (-587 lb.)	-187 kg (-412 lb.)	-165 kg (-363 lb.)	0 mm (0 in.)	+8 mm (+0.3 in.)	-2 mm (-0.1 in.)
Firestone 20.5-25, 16 PR L-3 SRG LD	-276 kg (-608 lb.)	-194 kg (-427 lb.)	-171 kg (-376 lb.)	0 mm (0 in.)	+8 mm (+0.3 in.)	+3 mm (+0.1 in.)
Michelin 20.5 R 25, 1 Star L2 SNO-PLUS	-96 kg (-212 lb.)	-67 kg (-148 lb.)	-59 kg (-131 lb.)	0 mm (0 in.)	+6 mm (+0.2 in.)	-16 mm (-0.6 in.)
Michelin 620/75R26 MegaXbib <sup>†</sup>	-189 kg (-417 lb.)	-133 kg (-293 lb.)	-117 kg (-258 lb.)	+187 mm (+7.4 in.)	+247 mm (+9.7 in.)	+23 mm (+0.9 in.)
Michelin 750/65R26 MegaXbib <sup>†</sup>	+55 kg (+121 lb.)	+38 kg (+85 lb.)	+34 kg (+75 lb.)	+322 mm (+12.7 in.)	+521 mm (+20.5 in.)	+36 mm (+1.4 in.)
CaCl <sub>2</sub> in 20.5-25, L-3 Rear Tires, 75% Fill	+825 kg (+1,820 lb.)	+1157 kg (+2,551 lb.)	+1020 kg (+2,250 lb.)	N/A	N/A	N/A

\*May change based on vehicle configuration, weight, or tire-pressure adjustments.

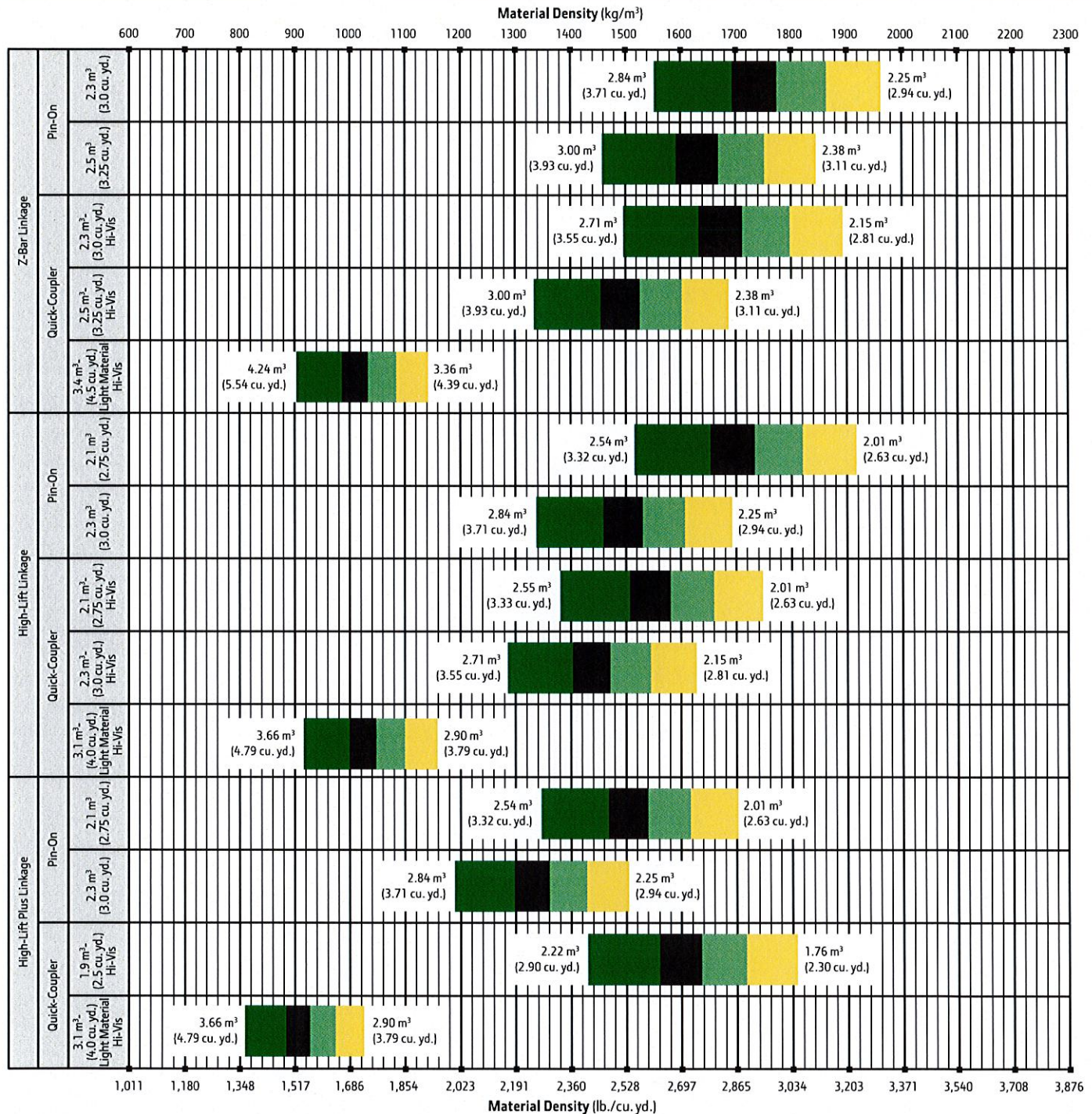
<sup>†</sup>Equipped with 1-piece rims.

\*Requires 8-deg. rear axle stops.

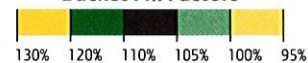


## Bucket Selection Guides

## 544 P-TIER Z-BAR / HIGH-LIFT / HIGH-LIFT PLUS



### Bucket Fill Factors



LOOSE MATERIALS	kg/m³	lb./cu. yd.	LOOSE MATERIALS	kg/m³	lb./cu. yd.
Chips, pulpwood	288	486	Limestone, coarse, sized	1570	2,646
Cinders (coal, ashes, clinkers)	673	1,134	Limestone, mixed sizes	1682	2,835
Clay and gravel, dry	1602	2,700	Limestone, pulverized or crushed	1362	2,295
Clay, compact, solid	1746	2,943	Sand, damp	2083	3,510
Clay, dry in lump loose	1009	1,701	Sand, dry	1762	2,970
Clay, excavated in water	1282	2,160	Sand, voids, full of water	2083	3,510
Coal, anthracite, broken, loose	865	1,458	Sandstone, quarried	1314	2,214
Coal, bituminous, moderately wet	801	1,350	Shale, broken crushed	1362	2,295
Earth, common loam, dry	1218	2,052	Slag, furnace granulated	1955	3,294
Earth, mud, packed	1843	3,105	Stone or gravel, 37.5 to 87.5-mm (1.5 to 3.5 in.) size	1442	2,430
Granite, broken	1538	2,592	Stone or gravel, 18.75-mm (0.75 in.) size	1602	2,700
Gypsum	2275	3,834			



# Additional equipment

Key: ● Standard ▲ Optional or special See your John Deere dealer for further information.

444 P	524 P	544 P	624 P	644 P	724 P	Engine
●	●	●	●	●	●	Wet-sleeve cylinder liners
●	●	●	●	●	●	Programmable auto-idle and auto shutdown
●	●	●	●	●	●	Selected idle adjustment from 900–1,250 rpm
●	●	●	●	●	●	Starter excessive-cranking protection
●	●	●	●	●	●	Automatic engine cool-down timer
●	●	●	●	●	●	Automatic derating for exceeded system temperatures
●	●	●	●	●	●	Serpentine drive belt for automatic tensioner
●	●	●	●	●	●	Electrical fuel-priming pump
●	●	●	●	●	●	Dual-stage fuel filter and water separator
●	●	●	●	●	●	500-hour vertical spin-on oil filter
▲	▲	▲	▲	▲	▲	Engine-compartment light
▲	▲	▲	▲	▲	▲	Chrome exhaust stack
●	●	●	●	●	●	Automatic glow plugs for cold start
					▲	Automatic ether starting aid (recommended for cold starts below –12 deg. C [10 deg. F])
▲	▲	▲	▲	▲	▲	Engine-block heater (recommended for cold starts below –23 deg. C [–10 deg. F])
▲	▲	▲	▲	▲	▲	Centrifugal engine air pre-cleaner
▲	▲	▲	▲	▲	▲	Throttle lock
Powertrain						
●	●	●	●	●	●	Clutch cutoff with 4 operator settings: Automatic, level ground, small slope, or steep slope
●	●	●	●	●	●	Programmable maximum high gear
●	●	●	●	●	●	Clutch calibration engaged from monitor
●	●	●	●	●	●	2,000-hour vertical spin-on transmission filter
●	●	●	●	●	●	Transmission fill tube and sight gauge
●	●	●	●	●	●	Transmission diagnostic ports
●				▲	▲	4-speed transmission with non-lockup torque converter
	●	▲	▲			5-speed transmission with non-lockup torque converter
		●	●	●	●	5-speed transmission with lockup torque converter
●	●	●	●	●	●	Front locking differential
▲	▲	▲	▲	▲	▲	Rear locking differential
●	●	●	●	●	●	Brake retractors and adjusters
▲	▲	▲	▲	▲	▲	Automatic differential lock
●	●	●	●	●	●	Axle oil temperature sensing
▲	▲	▲	▲	▲	▲	Wheel-spin control

444 P	524 P	544 P	624 P	644 P	724 P	Quad-Cool™ Cooling System
●	●	●	●	●	●	Heavy-duty, trash-resistant radiator and high-ambient cooling package
●	●	●	●	●	●	2-side access to all coolers
●	●	●	●	●	●	Isolated from engine compartment
●	●	●	●	●	●	Engine radiator
●	●	●	●	●	●	Engine oil cooler
●	●	●	●	●	●	Hydraulic oil cooler (oil to air)
●	●	●	●	●	●	Transmission oil cooler (oil to air)
●	●	●	●	●	●	Charge air cooler (air to air)
●	●	●	●	●	●	Fuel cooler
●	●	●	●	●	●	Coolant recovery tank
●	●	●	●	●	●	Antifreeze, –37 deg. C (–34 deg. F)
●	●	●	●	●	●	Cool-on-demand, hydraulically driven, swing-out fan
●	●	●	●	●	●	Enclosed fan safety guard
▲	▲	▲	▲	▲	▲	Automatic reversing fan drive
▲	▲	▲	●	●	●	Axle and service-brake coolers
Hydraulics						
●	●	●	●	●	●	Electrohydraulic (EH) controls with soft stops and adjustable settings
●	●	●	●	●	●	In-cab adjustable automatic return-to-dig bucket positioner
●	●	●	●	●	●	In-cab adjustable automatic boom-height kickout/return to carry
●	●	●	●	●	●	Reservoir with sight gauge and fill strainer
●	●	●	●	●	●	Hydraulic diagnostic ports
●	●	●	●	●	●	4,000-hour in-tank filter
●	●	●	●	●	●	2 function — joystick with F-N-R
▲	▲	▲	▲	▲	▲	2 function — 2-lever fingertip controls and steering column F-N-R
▲	▲	▲	▲	▲	▲	3 function — joystick with F-N-R and integrated 3rd-function roller
▲	▲	▲	▲	▲	▲	3 function — 3-lever fingertip controls and steering column F-N-R
▲	▲	▲	▲	▲	▲	4 function — joystick with F-N-R and integrated 3rd/4th-function rollers
●	●	●	●	●	●	Programmable multifunction buttons (2)
●	●	●	●	●	●	Adjustable and continuous hydraulic-flow settings
●	●	●	●	●	●	Programmable attachment settings
▲	▲	▲	▲	▲	●	Ride control, automatic with monitor-adjustable speed settings
▲	▲	▲	▲	▲	▲	Hydraulic control system for quick-coupler locking pins
▲	▲	▲	▲	▲	▲	Hydrau™ XR cold-temperature hydraulic fluid recommended below –25 deg. C (–13 deg. F)

While general information, pictures, and descriptions are provided, some illustrations and text may include product options and accessories NOT AVAILABLE in all regions, and in some countries products and accessories may require modifications or additions to ensure compliance with the local regulations of those countries.

Net engine power is with standard equipment including air cleaner, exhaust system, alternator, and cooling fan at test conditions per ISO 9249. No derating is required up to 3050-m (10,000 ft.) altitude. Specifications and design subject to change without notice. Specifications with the exception of bucket capacity are in accordance with all applicable ISO standards. Except where otherwise noted, these specifications are based on units with applicable linkage and standard equipment, ROPS cab, rear cast bumper/counterweight, transmission side-frame guards, bottom guards, standard tires, full fuel tank, and 79-kg (175 lb.) operator.



# Additional equipment (cont.)

Key: ● Standard ▲ Optional or special

See your John Deere dealer for further information.

444 P	524 P	544 P	624 P	644 P	724 P	Steering Systems
●	●	●	●	●	●	Conventional steering wheel with spinner knob
				▲	▲	Joystick steering (including conventional steering column) with gearshift, F-N-R, and horn
▲	▲	▲	▲	▲	▲	Secondary steering
Electrical						
●	●	●	●	●	●	Solid-state electrical power-distribution system
●	●	●	●	●	●	Lockable master electrical-disconnect switch
●	●	●	●	●	●	Battery-terminal safety covers
●	●	●	●	●	●	By-pass start safety cover at starter
●	●	●	●	●	●	Remote jump-start access in battery box
●	●	●	●	●	●	Pre-wired for beacon/strobe light
●	●	●	●	●	●	Lights: Halogen driving lights with guards (2) / Front (4), rear cab (2), and rear grille (2) work lights / LED front turn signals and flashers / LED stop- and taillights
▲	▲	▲	▲	▲	▲	Premium LED light package (all exterior lights are heavy-duty LED)
●	●	●	●	●	●	Programmable courtesy lights
●	●	●	●	●	●	Horn, electric
●	●	●	●	●	●	Reverse warning alarm
●	●	●	●	●	●	Multifunction/multi-language 178-mm (7 in.) LCD color monitor includes: Digital instruments — Analog display (hydraulic oil temperature, engine coolant temperature, transmission oil temperature, and engine oil pressure) / Digital display (engine rpm, transmission gear/direction indicator, hour meter, fuel level, diesel exhaust fluid (DEF) level, speedometer, odometer, and average fuel consumption)
▲	▲	▲	▲	▲	▲	Multifunction/multi-language 127-mm (5 in.) LCD color monitor includes: Digital instruments — Analog display (hydraulic oil temperature, engine coolant temperature, transmission oil temperature, and engine oil pressure) / Digital display (engine rpm, transmission gear/direction indicator, hour meter, fuel level, DEF level, speedometer, odometer, and average fuel consumption)
▲	▲	▲	▲	●	●	Integrated cycle counter with 5 categories
●	●	●	●	●	●	Indicator lights: Standard and selected options / Amber caution and red stop

444 P	524 P	544 P	624 P	644 P	724 P	Electrical (continued)
●	●	●	●	●	●	Operator-warning messages
●	●	●	●	●	●	Built-in diagnostics: Diagnostic-code details / Sensor values / Calibrations / Individual circuit tester
▲	▲	▲	▲	▲	▲	Electrical corrosion-prevention package
●	●	●	●	●	●	Standard AM/FM/Weather-Band (WB) radio with remote auxiliary port
▲	▲	▲	▲	▲	▲	Premium AM/FM/WB radio with Bluetooth®, remote auxiliary port, and remote USB port (premium cab only)
●	●	●	●	●	●	24- to 12-volt, 8-amp converter and cab power ports (3)
▲	▲	▲	▲	▲	▲	24- to 12-volt, 15- or 30-amp converter and cab power ports (3)
Operator's Station						
●	●	●	●	●	●	Standard cab with air conditioning/heater (ROPS/FOPS Level 1, isolation mounted)
▲	▲	▲	▲	▲	▲	Premium cab with air conditioning/heater (ROPS/FOPS Level 1, isolation mounted)
▲	▲	▲	▲	▲	▲	Automatic temperature control (premium cab only)
●	●	●	●	●	●	Rear window defrost vent
●	●	●	●	●	●	Keyless start with multiple security modes
●	●	●	●	●	●	Sealed-switch module with function indicators
●	●	●	●	●	●	Seat with backrest extension, deep foam, fabric cover, and adjustable air suspension
▲	▲	▲	▲	▲	▲	Premium seat with high-wide back-and-headrest extension, heated and ventilated, leather/fabric cover, and adjustable heavy-duty air suspension
●	●	●	●	●	●	Hydraulic controls integrated to seat
●	●	●	●	●	●	High-visibility, bright-orange seat belt, 76 mm (3 in.), with retractor
▲	▲	▲	▲	▲	▲	Seat-belt minder monitoring with JDLink™ and seat-belt indicator beacon
●	●	●	●	●	●	Cup holder and cup/Thermos® holder with retaining strap
●	●	●	●	●	●	Lunch-box/cooler holder with tie-down brackets
●	●	●	●	●	●	Coat hook
●	●	●	●	●	●	LED dome and reading light
●	●	●	●	●	●	Rubber floor mat
●	●	●	●	●	●	Dual-tilt steering column
●	●	●	●	●	●	Operator's manual storage compartment

Operator's Station continued on next page

While general information, pictures, and descriptions are provided, some illustrations and text may include product options and accessories NOT AVAILABLE in all regions, and in some countries products and accessories may require modifications or additions to ensure compliance with the local regulations of those countries.

Net engine power is with standard equipment including air cleaner, exhaust system, alternator, and cooling fan at test conditions per ISO 9249. No derating is required up to 3050-m (10,000 ft.) altitude. Specifications and design subject to change without notice. Specifications with the exception of bucket capacity are in accordance with all applicable ISO standards. Except where otherwise noted, these specifications are based on units with applicable linkage and standard equipment: ROPS cab, rear cast bumper/counterweight, transmission side-frame guards, bottom guards, standard tires, full fuel tank, and 79-kg (175 lb.) operator.



# Additional equipment (cont.)

Key: ● Standard ▲ Optional or special

See your John Deere dealer for further information.

444 P	524 P	544 P	624 P	644 P	724 P	Operator's Station (continued)
●	●	●	●	●	●	Outside (2) and inside (1) rearview mirrors
▲	▲	▲	▲	▲	▲	Heated outside mirrors with convex lens
▲	▲	▲	▲	▲	▲	In-cab adjustable heated outside mirrors with convex lens (premium cab only)
●	●	●	●	●	●	Left-side operator-station access
●	●	●	●	●	●	Slip-resistant steps and ergonomic handholds
●	●	●	●	●	●	Pull-down front sun visor
●	●	●	●	●	●	Front and rear intermittent windshield wipers and washers
▲	▲	▲	▲	▲	▲	Powered cab air pre-cleaner
▲	▲	▲	▲	▲	▲	Beacon bracket only
▲	▲	▲	▲	▲	▲	Beacon bracket with strobe beacon
●	●	●	●	●	●	Rearview camera
▲	▲	▲	▲	▲	▲	Rearview camera with radar object-detection system
▲	▲	▲	▲	▲	▲	Dedicated 178-mm (7 in.) rear camera display
●	●	●	●	●	●	Payload scale ready
▲	▲	▲	▲	▲	▲	Fire extinguisher
<b>Loader Linkage</b>						
●	●	●	●	●	●	Z-Bar loader linkage (parallel lift)
▲	▲	▲	▲	▲	▲	High-Lift Z-Bar loader linkage (parallel lift)
	▲	▲	▲			High-Lift Plus Z-Bar loader linkage (parallel lift)
	▲		▲			Tool Carrier linkage for visibility (parallel lift)
<b>Buckets and Attachments</b>						
▲	▲	▲	▲	▲	▲	Full line of Deere pin-on buckets, coupler buckets, and forks
▲	▲	▲	▲	▲	▲	John Deere hydraulic coupler that accepts JRB-pattern attachments
▲	▲	▲	▲	▲	▲	Hi-Vis hydraulic coupler that accepts Euro-pattern attachments (ISO)
<b>Overall Vehicle</b>						
●	●	●	●	●	●	JDLink wireless communication system (available in specific countries; see your dealer for details)
●	●	●	●	●	●	NeverGrease™ rear-axle oscillation
●	●	●	●	●	●	Front and rear tie-downs
●	●	●	●	●	●	Rear cast bumper/counterweight with rear hitch and locking pin

444 P	524 P	544 P	624 P	644 P	724 P	Overall Vehicle (continued)
●	●	●	●	●	●	Articulation locking bar
●	●	●	●	●	●	Loader boom service locking bar
●	●	●	●	●	●	40-deg. steering articulation to each side with rubber-cushion stops on frame
●	●	●	●	●	●	Vandal protection with lockable engine enclosures, right counterweight storage, and filler access for radiator/fuel/DEF/hydraulic transmission
●	●	●	●	●	●	Left-side service steps and handholds
▲	▲	▲	▲	▲	▲	Right-side service steps and handrails
▲	▲	▲	▲	▲	▲	Left-side close-mounted steps
●	●	●	●	●	●	Storage compartment
●	●	●	●	●	●	Fuel-tank fill strainer
●	●	●	●	●	●	Heavy-duty fuel-tank guard
●	●	●	●	●	●	Ground-level fuel and DEF fill
●	●	●	●	●	●	Same-side ground-level daily servicing
●						17.5R25 tires on 3-piece rims
▲	●	●	●			20.5R25 tires on 3-piece rims
				●	●	23.5R25 tires on 3-piece rims
				▲	▲	23.5R25 tires on 5-piece rims
				▲	▲	Tire-pressure monitoring system
	▲	▲	▲			Ag material-handling package
			▲	▲	▲	Waste handler (Z-Bar and High-Lift)
▲	▲	▲	▲	●	●	Environmental drains and sample ports for engine, transmission, hydraulic oils, and engine coolant
				▲	▲	Quick fluid service (engine, transmission, hydraulic oils, and engine coolant)
				▲	▲	Fast-fuel system
●	●	●	●	●	●	Fenders, front narrow
▲	▲	▲	▲	▲	▲	Fenders, front full width
▲	▲	▲	▲	▲	▲	Fenders, front and rear full width
▲	▲	▲	▲	▲	▲	Fenders, front and rear full width with mud flaps
▲	▲	▲	▲	▲	▲	Less wheels and tires with axle stops
▲	▲	▲	▲	▲	▲	Rims less tires
▲	▲	▲	▲	▲	▲	Transmission side-frame and bottom guards
			▲	▲	▲	Special guarding for waste applications
▲	▲	▲	▲	▲	▲	Lift eyes
▲	▲	▲	▲	▲	▲	License-plate bracket and light

While general information, pictures, and descriptions are provided, some illustrations and text may include product options and accessories NOT AVAILABLE in all regions, and in some countries products and accessories may require modifications or additions to ensure compliance with the local regulations of those countries.

Net engine power is with standard equipment including air cleaner, exhaust system, alternator, and cooling fan at test conditions per ISO 9249. No derating is required up to 3050-m (10,000 ft.) altitude. Specifications and design subject to change without notice. Specifications with the exception of bucket capacity are in accordance with all applicable ISO standards. Except where otherwise noted, these specifications are based on units with applicable linkage and standard equipment, ROPS cab, rear cast bumper/counterweight, transmission side-frame guards, bottom guards, standard tires, full fuel tank, and 79-kg (175 lb.) operator.







Company ID Number: 513478

## THE E-VERIFY PROGRAM FOR EMPLOYMENT VERIFICATION MEMORANDUM OF UNDERSTANDING

### ARTICLE I

#### PURPOSE AND AUTHORITY

This Memorandum of Understanding (MOU) sets forth the points of agreement between the Department of Homeland Security (DHS) and Warrior Tractor & Equipment Co., Inc. (Employer) regarding the Employer's participation in the Employment Eligibility Verification Program (E-Verify). This MOU explains certain features of the E-Verify program and enumerates specific responsibilities of DHS, the Social Security Administration (SSA), and the Employer. E-Verify is a program that electronically confirms an employee's eligibility to work in the United States after completion of the Employment Eligibility Verification Form (Form I-9). For covered government contractors, E-Verify is used to verify the employment eligibility of all newly hired employees and all existing employees assigned to Federal contracts or to verify the entire workforce if the contractor so chooses.

Authority for the E-Verify program is found in Title IV, Subtitle A, of the Illegal Immigration Reform and Immigrant Responsibility Act of 1996 (IIRIRA), Pub. L. 104-208, 110 Stat. 3009, as amended (8 U.S.C. § 1324a note). Authority for use of the E-Verify program by Federal contractors and subcontractors covered by the terms of Subpart 22.18, "Employment Eligibility Verification", of the Federal Acquisition Regulation (FAR) (hereinafter referred to in this MOU as a "Federal contractor with the FAR E-Verify clause") to verify the employment eligibility of certain employees working on Federal contracts is also found in Subpart 22.18 and in Executive Order 12989, as amended.

### ARTICLE II

#### FUNCTIONS TO BE PERFORMED

##### A. RESPONSIBILITIES OF SSA

1. SSA agrees to provide the Employer with available information that allows the Employer to confirm the accuracy of Social Security Numbers provided by all employees verified under this MOU and the employment authorization of U.S. citizens.
2. SSA agrees to provide to the Employer appropriate assistance with operational problems that may arise during the Employer's participation in the E-Verify program. SSA agrees to provide the Employer with names, titles, addresses, and telephone numbers of SSA representatives to be contacted during the E-Verify process.
3. SSA agrees to safeguard the information provided by the Employer through the E-Verify program procedures, and to limit access to such information, as is appropriate by law, to individuals responsible for the verification of Social Security Numbers and for evaluation of the E-Verify program or such other persons or entities who may be authorized by SSA as governed



**Company ID Number: 513478**

by the Privacy Act (5 U.S.C. § 552a), the Social Security Act (42 U.S.C. 1306(a)), and SSA regulations (20 CFR Part 401).

4. SSA agrees to provide a means of automated verification that is designed (in conjunction with DHS's automated system if necessary) to provide confirmation or tentative nonconfirmation of U.S. citizens' employment eligibility within 3 Federal Government work days of the initial inquiry.

5. SSA agrees to provide a means of secondary verification (including updating SSA records as may be necessary) for employees who contest SSA tentative nonconfirmations that is designed to provide final confirmation or nonconfirmation of U.S. citizens' employment eligibility and accuracy of SSA records for both citizens and non-citizens within 10 Federal Government work days of the date of referral to SSA, unless SSA determines that more than 10 days may be necessary. In such cases, SSA will provide additional verification instructions.

## **B. RESPONSIBILITIES OF DHS**

1. After SSA verifies the accuracy of SSA records for employees through E-Verify, DHS agrees to provide the Employer access to selected data from DHS's database to enable the Employer to conduct, to the extent authorized by this MOU:

- Automated verification checks on employees by electronic means, and
- Photo verification checks (when available) on employees.

2. DHS agrees to provide to the Employer appropriate assistance with operational problems that may arise during the Employer's participation in the E-Verify program. DHS agrees to provide the Employer names, titles, addresses, and telephone numbers of DHS representatives to be contacted during the E-Verify process.

3. DHS agrees to make available to the Employer at the E-Verify Web site and on the E-Verify Web browser, instructional materials on E-Verify policies, procedures and requirements for both SSA and DHS, including restrictions on the use of E-Verify. DHS agrees to provide training materials on E-Verify.

4. DHS agrees to provide to the Employer a notice, which indicates the Employer's participation in the E-Verify program. DHS also agrees to provide to the Employer anti-discrimination notices issued by the Office of Special Counsel for Immigration-Related Unfair Employment Practices (OSC), Civil Rights Division, U.S. Department of Justice.

5. DHS agrees to issue the Employer a user identification number and password that permits the Employer to verify information provided by employees with DHS's database.

6. DHS agrees to safeguard the information provided to DHS by the Employer, and to limit access to such information to individuals responsible for the verification of employees' employment eligibility and for evaluation of the E-Verify program, or to such other persons or entities as may be authorized by applicable law. Information will be used only to verify the accuracy of Social Security Numbers and employment eligibility, to enforce the Immigration and





**Company ID Number: 513478**

Nationality Act (INA) and Federal criminal laws, and to administer Federal contracting requirements.

7. DHS agrees to provide a means of automated verification that is designed (in conjunction with SSA verification procedures) to provide confirmation or tentative nonconfirmation of employees' employment eligibility within 3 Federal Government work days of the initial inquiry.

8. DHS agrees to provide a means of secondary verification (including updating DHS records as may be necessary) for employees who contest DHS tentative nonconfirmations and photo non-match tentative nonconfirmations that is designed to provide final confirmation or nonconfirmation of the employees' employment eligibility within 10 Federal Government work days of the date of referral to DHS, unless DHS determines that more than 10 days may be necessary. In such cases, DHS will provide additional verification instructions.

### **C. RESPONSIBILITIES OF THE EMPLOYER**

1. The Employer agrees to display the notices supplied by DHS in a prominent place that is clearly visible to prospective employees and all employees who are to be verified through the system.

2. The Employer agrees to provide to the SSA and DHS the names, titles, addresses, and telephone numbers of the Employer representatives to be contacted regarding E-Verify.

3. The Employer agrees to become familiar with and comply with the most recent version of the E-Verify User Manual.

4. The Employer agrees that any Employer Representative who will perform employment verification queries will complete the E-Verify Tutorial before that individual initiates any queries.

A. The Employer agrees that all Employer representatives will take the refresher tutorials initiated by the E-Verify program as a condition of continued use of E-Verify.

B. Failure to complete a refresher tutorial will prevent the Employer from continued use of the program.

5. The Employer agrees to comply with current Form I-9 procedures, with two exceptions:

- If an employee presents a "List B" identity document, the Employer agrees to only accept "List B" documents that contain a photo. (List B documents identified in 8 C.F.R. § 274a.2(b)(1)(B)) can be presented during the Form I-9 process to establish identity.) If an employee objects to the photo requirement for religious reasons, the Employer should contact E-Verify at 888-464-4218.

- If an employee presents a DHS Form I-551 (Permanent Resident Card) or Form I-766 (Employment Authorization Document) to complete the Form I-9, the Employer agrees to make a photocopy of the document and to retain the photocopy with the employee's Form I-9. The photocopy must be of sufficient quality to allow for verification of the photo



Company ID Number: 513478

and written information. The employer will use the photocopy to verify the photo and to assist DHS with its review of photo non-matches that are contested by employees. Note that employees retain the right to present any List A, or List B and List C, documentation to complete the Form I-9. DHS may in the future designate other documents that activate the photo screening tool.

6. The Employer understands that participation in E-Verify does not exempt the Employer from the responsibility to complete, retain, and make available for inspection Forms I-9 that relate to its employees, or from other requirements of applicable regulations or laws, including the obligation to comply with the antidiscrimination requirements of section 274B of the INA with respect to Form I-9 procedures, except for the following modified requirements applicable by reason of the Employer's participation in E-Verify: (1) identity documents must have photos, as described in paragraph 5 above; (2) a rebuttable presumption is established that the Employer has not violated section 274A(a)(1)(A) of the Immigration and Nationality Act (INA) with respect to the hiring of any individual if it obtains confirmation of the identity and employment eligibility of the individual in good faith compliance with the terms and conditions of E-Verify; (3) the Employer must notify DHS if it continues to employ any employee after receiving a final nonconfirmation, and is subject to a civil money penalty between \$550 and \$1,100 for each failure to notify DHS of continued employment following a final nonconfirmation; (4) the Employer is subject to a rebuttable presumption that it has knowingly employed an unauthorized alien in violation of section 274A(a)(1)(A) if the Employer continues to employ an employee after receiving a final nonconfirmation; and (5) no person or entity participating in E-Verify is civilly or criminally liable under any law for any action taken in good faith based on information provided through the confirmation system. DHS reserves the right to conduct Form I-9 and E-Verify system compliance inspections during the course of E-Verify, as well as to conduct any other enforcement activity authorized by law.

7. The Employer agrees to initiate E-Verify verification procedures for new employees within 3 Employer business days after each employee has been hired (but after the Form I-9 has been completed), and to complete as many (but only as many) steps of the E-Verify process as are necessary according to the E-Verify User Manual, or in the case of Federal contractors with the FAR E-Verify clause, the E-Verify User Manual for Federal Contractors. The Employer is prohibited from initiating verification procedures before the employee has been hired and the Form I-9 completed. If the automated system to be queried is temporarily unavailable, the 3-day time period is extended until it is again operational in order to accommodate the Employer's attempting, in good faith, to make inquiries during the period of unavailability. Employers may initiate verification by notating the Form I-9 in circumstances where the employee has applied for a Social Security Number (SSN) from the SSA and is waiting to receive the SSN, provided that the Employer performs an E-Verify employment verification query using the employee's SSN as soon as the SSN becomes available.

8. The Employer agrees not to use E-Verify procedures for pre-employment screening of job applicants, in support of any unlawful employment practice, or for any other use not authorized by this MOU. Employers must use E-Verify for all new employees, unless an Employer is a Federal contractor that qualifies for the exceptions described in Article II.D.1.c. Except as provided in Article II.D, the Employer will not verify selectively and will not verify employees hired before the effective date of this MOU. The Employer understands that if the Employer



**Company ID Number: 513478**

uses the E-Verify system for any purpose other than as authorized by this MOU, the Employer may be subject to appropriate legal action and termination of its access to SSA and DHS information pursuant to this MOU.

9. The Employer agrees to follow appropriate procedures (see Article III. below) regarding tentative nonconfirmations, including notifying employees in private of the finding and providing them written notice of the findings, providing written referral instructions to employees, allowing employees to contest the finding, and not taking adverse action against employees if they choose to contest the finding. Further, when employees contest a tentative nonconfirmation based upon a photo non-match, the Employer is required to take affirmative steps (see Article III.B. below) to contact DHS with information necessary to resolve the challenge.

10. The Employer agrees not to take any adverse action against an employee based upon the employee's perceived employment eligibility status while SSA or DHS is processing the verification request unless the Employer obtains knowledge (as defined in 8 C.F.R. § 274a.1(l)) that the employee is not work authorized. The Employer understands that an initial inability of the SSA or DHS automated verification system to verify work authorization, a tentative nonconfirmation, a case in continuance (indicating the need for additional time for the government to resolve a case), or the finding of a photo non-match, does not establish, and should not be interpreted as evidence, that the employee is not work authorized. In any of the cases listed above, the employee must be provided a full and fair opportunity to contest the finding, and if he or she does so, the employee may not be terminated or suffer any adverse employment consequences based upon the employee's perceived employment eligibility status (including denying, reducing, or extending work hours, delaying or preventing training, requiring an employee to work in poorer conditions, refusing to assign the employee to a Federal contract or other assignment, or otherwise subjecting an employee to any assumption that he or she is unauthorized to work) until and unless secondary verification by SSA or DHS has been completed and a final nonconfirmation has been issued. If the employee does not choose to contest a tentative nonconfirmation or a photo non-match or if a secondary verification is completed and a final nonconfirmation is issued, then the Employer can find the employee is not work authorized and terminate the employee's employment. Employers or employees with questions about a final nonconfirmation may call E-Verify at 1-888-464-4218 or OSC at 1-800-255-8155 or 1-800-237-2515 (TDD).

11. The Employer agrees to comply with Title VII of the Civil Rights Act of 1964 and section 274B of the INA, as applicable, by not discriminating unlawfully against any individual in hiring, firing, or recruitment or referral practices because of his or her national origin or, in the case of a protected individual as defined in section 274B(a)(3) of the INA, because of his or her citizenship status. The Employer understands that such illegal practices can include selective verification or use of E-Verify except as provided in part D below, or discharging or refusing to hire employees because they appear or sound "foreign" or have received tentative nonconfirmations. The Employer further understands that any violation of the unfair immigration-related employment practices provisions in section 274B of the INA could subject the Employer to civil penalties, back pay awards, and other sanctions, and violations of Title VII could subject the Employer to back pay awards, compensatory and punitive damages. Violations of either section 274B of the INA or Title VII may also lead to the termination of its participation in E-



**Company ID Number: 513478**

Verify. If the Employer has any questions relating to the anti-discrimination provision, it should contact OSC at 1-800-255-8155 or 1-800-237-2515 (TDD).

12. The Employer agrees to record the case verification number on the employee's Form I-9 or to print the screen containing the case verification number and attach it to the employee's Form I-9.

13. The Employer agrees that it will use the information it receives from SSA or DHS pursuant to E-Verify and this MOU only to confirm the employment eligibility of employees as authorized by this MOU. The Employer agrees that it will safeguard this information, and means of access to it (such as PINS and passwords) to ensure that it is not used for any other purpose and as necessary to protect its confidentiality, including ensuring that it is not disseminated to any person other than employees of the Employer who are authorized to perform the Employer's responsibilities under this MOU, except for such dissemination as may be authorized in advance by SSA or DHS for legitimate purposes.

14. The Employer acknowledges that the information which it receives from SSA is governed by the Privacy Act (5 U.S.C. § 552a(i)(1) and (3)) and the Social Security Act (42 U.S.C. 1306(a)), and that any person who obtains this information under false pretenses or uses it for any purpose other than as provided for in this MOU may be subject to criminal penalties.

15. The Employer agrees to cooperate with DHS and SSA in their compliance monitoring and evaluation of E-Verify, including by permitting DHS and SSA, upon reasonable notice, to review Forms I-9 and other employment records and to interview it and its employees regarding the Employer's use of E-Verify, and to respond in a timely and accurate manner to DHS requests for information relating to their participation in E-Verify.

## **D. RESPONSIBILITIES OF FEDERAL CONTRACTORS WITH THE FAR E-VERIFY CLAUSE**

1. The Employer understands that if it is a subject to the employment verification terms in Subpart 22.18 of the FAR, it must verify the employment eligibility of any existing employee assigned to the contract and all new hires, as discussed in the Supplemental Guide for Federal Contractors. Once an employee has been verified through E-Verify by the Employer, the Employer may not reverify the employee through E-Verify.

a. Federal contractors with the FAR E-Verify clause agree to become familiar with and comply with the most recent versions of the E-Verify User Manual for Federal Contractors and the E-Verify Supplemental Guide for Federal Contractors.

b. Federal contractors with the FAR E-Verify clause agree to complete a tutorial for Federal contractors with the FAR E-Verify clause.

c. Federal contractors with the FAR E-Verify clause not enrolled at the time of contract award: An Employer that is not enrolled in E-Verify at the time of a contract award must enroll as a Federal contractor with the FAR E-Verify clause in E-Verify within 30 calendar days of contract award and, within 90 days of enrollment, begin to use E-Verify to initiate verification of employment eligibility of new hires of the Employer who are working in the United States,



**Company ID Number: 513478**

whether or not assigned to the contract. Once the Employer begins verifying new hires, such verification of new hires must be initiated within 3 business days after the date of hire. Once enrolled in E-Verify as a Federal contractor with the FAR E-Verify clause, the Employer must initiate verification of employees assigned to the contract within 90 calendar days from the time of enrollment in the system and after the date and selecting which employees will be verified in E-Verify or within 30 days of an employee's assignment to the contract, whichever date is later.

d. Employers that are already enrolled in E-Verify at the time of a contract award but are not enrolled in the system as a Federal contractor with the FAR E-Verify clause: Employers enrolled in E-Verify for 90 days or more at the time of a contract award must use E-Verify to initiate verification of employment eligibility for new hires of the Employer who are working in the United States, whether or not assigned to the contract, within 3 business days after the date of hire. Employers enrolled in E-Verify as other than a Federal contractor with the FAR E-Verify clause, must update E-Verify to indicate that they are a Federal contractor with the FAR E-Verify clause within 30 days after assignment to the contract. If the Employer is enrolled in E-Verify for 90 calendar days or less at the time of contract award, the Employer must, within 90 days of enrollment, begin to use E-Verify to initiate verification of new hires of the contractor who are working in the United States, whether or not assigned to the contract. Such verification of new hires must be initiated within 3 business days after the date of hire. An Employer enrolled as a Federal contractor with the FAR E-Verify clause in E-Verify must initiate verification of each employee assigned to the contract within 90 calendar days after date of contract award or within 30 days after assignment to the contract, whichever is later.

e. Institutions of higher education, State, local and tribal governments and sureties: Federal contractors with the FAR E-Verify clause that are institutions of higher education (as defined at 20 U.S.C. 1001(a)), State or local governments, governments of Federally recognized Indian tribes, or sureties performing under a takeover agreement entered into with a Federal agency pursuant to a performance bond may choose to only verify new and existing employees assigned to the Federal contract. Such Federal contractors with the FAR E-Verify clause may, however, elect to verify all new hires, and/or all existing employees hired after November 6, 1986. The provisions of Article II.D, paragraphs 1.a and 1.b of this MOU providing timeframes for initiating employment verification of employees assigned to a contract apply to such institutions of higher education, State, local and tribal governments, and sureties.

f. Verification of all employees: Upon enrollment, Employers who are Federal contractors with the FAR E-Verify clause may elect to verify employment eligibility of all existing employees working in the United States who were hired after November 6, 1986, instead of verifying only new employees and those existing employees assigned to a covered Federal contract. After enrollment, Employers must elect to do so only in the manner designated by DHS and initiate E-Verify verification of all existing employees within 180 days after the election.

g. Form I-9 procedures for existing employees of Federal contractors with the FAR E-Verify clause: Federal contractors with the FAR E-Verify clause may choose to complete new Forms I-9 for all existing employees other than those that are completely exempt from this process. Federal contractors with the FAR E-Verify clause may also update previously completed Forms I-9 to initiate E-Verify verification of existing employees who are not completely exempt as long as that Form I-9 is complete (including the SSN), complies with



Company ID Number: 513478

Article II.C.5, the employee's work authorization has not expired, and the Employer has reviewed the information reflected in the Form I-9 either in person or in communications with the employee to ensure that the employee's stated basis in section 1 of the Form I-9 for work authorization has not changed (including, but not limited to, a lawful permanent resident alien having become a naturalized U.S. citizen). If the Employer is unable to determine that the Form I-9 complies with Article II.C.5, if the employee's basis for work authorization as attested in section 1 has expired or changed, or if the Form I-9 contains no SSN or is otherwise incomplete, the Employer shall complete a new I-9 consistent with Article II.C.5, or update the previous I-9 to provide the necessary information. If section 1 of the Form I-9 is otherwise valid and up-to-date and the form otherwise complies with Article II.C.5, but reflects documentation (such as a U.S. passport or Form I-551) that expired subsequent to completion of the Form I-9, the Employer shall not require the production of additional documentation, or use the photo screening tool described in Article II.C.5, subject to any additional or superseding instructions that may be provided on this subject in the Supplemental Guide for Federal Contractors. Nothing in this section shall be construed to require a second verification using E-Verify of any assigned employee who has previously been verified as a newly hired employee under this MOU, or to authorize verification of any existing employee by any Employer that is not a Federal contractor with the FAR E-Verify clause.

2. The Employer understands that if it is a Federal contractor with the FAR E-Verify clause, its compliance with this MOU is a performance requirement under the terms of the Federal contract or subcontract, and the Employer consents to the release of information relating to compliance with its verification responsibilities under this MOU to contracting officers or other officials authorized to review the Employer's compliance with Federal contracting requirements.

### ARTICLE III

## **REFERRAL OF INDIVIDUALS TO SSA AND DHS**

### **A. REFERRAL TO SSA**

1. If the Employer receives a tentative nonconfirmation issued by SSA, the Employer must print the notice as directed by the E-Verify system and provide it to the employee so that the employee may determine whether he or she will contest the tentative nonconfirmation. The Employer must review the tentative nonconfirmation with the employee in private.

2. The Employer will refer employees to SSA field offices only as directed by the automated system based on a tentative nonconfirmation, and only after the Employer records the case verification number, reviews the input to detect any transaction errors, and determines that the employee contests the tentative nonconfirmation. The Employer will transmit the Social Security Number to SSA for verification again if this review indicates a need to do so. The Employer will determine whether the employee contests the tentative nonconfirmation as soon as possible after the Employer receives it.

3. If the employee contests an SSA tentative nonconfirmation, the Employer will provide the employee with a system-generated referral letter and instruct the employee to visit an SSA office within 8 Federal Government work days. SSA will electronically transmit the result of the referral to the Employer within 10 Federal Government work days of the referral unless it



**Company ID Number: 513478**

determines that more than 10 days is necessary. The Employer agrees to check the E-Verify system regularly for case updates.

4. The Employer agrees not to ask the employee to obtain a printout from the Social Security Number database (the Numident) or other written verification of the Social Security Number from the SSA.

## **B. REFERRAL TO DHS**

1. If the Employer receives a tentative nonconfirmation issued by DHS, the Employer must print the tentative nonconfirmation notice as directed by the E-Verify system and provide it to the employee so that the employee may determine whether he or she will contest the tentative nonconfirmation. The Employer must review the tentative nonconfirmation with the employee in private.

2. If the Employer finds a photo non-match for an employee who provides a document for which the automated system has transmitted a photo, the employer must print the photo non-match tentative nonconfirmation notice as directed by the automated system and provide it to the employee so that the employee may determine whether he or she will contest the finding. The Employer must review the tentative nonconfirmation with the employee in private.

3. The Employer agrees to refer individuals to DHS only when the employee chooses to contest a tentative nonconfirmation received from DHS automated verification process or when the Employer issues a tentative nonconfirmation based upon a photo non-match. The Employer will determine whether the employee contests the tentative nonconfirmation as soon as possible after the Employer receives it.

4. If the employee contests a tentative nonconfirmation issued by DHS, the Employer will provide the employee with a referral letter and instruct the employee to contact DHS through its toll-free hotline (as found on the referral letter) within 8 Federal Government work days.

5. If the employee contests a tentative nonconfirmation based upon a photo non-match, the Employer will provide the employee with a referral letter to DHS. DHS will electronically transmit the result of the referral to the Employer within 10 Federal Government work days of the referral unless it determines that more than 10 days is necessary. The Employer agrees to check the E-Verify system regularly for case updates.

6. The Employer agrees that if an employee contests a tentative nonconfirmation based upon a photo non-match, the Employer will send a copy of the employee's Form I-551 or Form I-766 to DHS for review by:

- Scanning and uploading the document, or
- Sending a photocopy of the document by an express mail account (paid for at employer expense).

7. If the Employer determines that there is a photo non-match when comparing the photocopied List B document described in Article II.C.5 with the image generated in E-Verify, the Employer must forward the employee's documentation to DHS using one of the means described in the preceding paragraph, and allow DHS to resolve the case.



Company ID Number: 513478

## ARTICLE IV

### SERVICE PROVISIONS

SSA and DHS will not charge the Employer for verification services performed under this MOU. The Employer is responsible for providing equipment needed to make inquiries. To access E-Verify, an Employer will need a personal computer with Internet access.

## ARTICLE V

### PARTIES

A. This MOU is effective upon the signature of all parties, and shall continue in effect for as long as the SSA and DHS conduct the E-Verify program unless modified in writing by the mutual consent of all parties, or terminated by any party upon 30 days prior written notice to the others. Any and all system enhancements to the E-Verify program by DHS or SSA, including but not limited to the E-Verify checking against additional data sources and instituting new verification procedures, will be covered under this MOU and will not cause the need for a supplemental MOU that outlines these changes. DHS agrees to train employers on all changes made to E-Verify through the use of mandatory refresher tutorials and updates to the E-Verify User Manual, the E-Verify User Manual for Federal Contractors or the E-Verify Supplemental Guide for Federal Contractors. Even without changes to E-Verify, DHS reserves the right to require employers to take mandatory refresher tutorials. An Employer that is a Federal contractor with the FAR E-Verify clause may terminate this MOU when the Federal contract that requires its participation in E-Verify is terminated or completed. In such a circumstance, the Federal contractor with the FAR E-Verify clause must provide written notice to DHS. If an Employer that is a Federal contractor with the FAR E-Verify clause fails to provide such notice, that Employer will remain a participant in the E-Verify program, will remain bound by the terms of this MOU that apply to participants that are not Federal contractors with the FAR E-Verify clause, and will be required to use the E-Verify procedures to verify the employment eligibility of all newly hired employees.

B. Notwithstanding Article V, part A of this MOU, DHS may terminate this MOU if deemed necessary because of the requirements of law or policy, or upon a determination by SSA or DHS that there has been a breach of system integrity or security by the Employer, or a failure on the part of the Employer to comply with established procedures or legal requirements. The Employer understands that if it is a Federal contractor with the FAR E-Verify clause, termination of this MOU by any party for any reason may negatively affect its performance of its contractual responsibilities.

C. Some or all SSA and DHS responsibilities under this MOU may be performed by contractor(s), and SSA and DHS may adjust verification responsibilities between each other as they may determine necessary. By separate agreement with DHS, SSA has agreed to perform its responsibilities as described in this MOU.



**Company ID Number: 513478**

D. Nothing in this MOU is intended, or should be construed, to create any right or benefit, substantive or procedural, enforceable at law by any third party against the United States, its agencies, officers, or employees, or against the Employer, its agents, officers, or employees.

E. Each party shall be solely responsible for defending any claim or action against it arising out of or related to E-Verify or this MOU, whether civil or criminal, and for any liability wherefrom, including (but not limited to) any dispute between the Employer and any other person or entity regarding the applicability of Section 403(d) of IIRIRA to any action taken or allegedly taken by the Employer.

F. The Employer understands that the fact of its participation in E-Verify is not confidential information and may be disclosed as authorized or required by law and DHS or SSA policy, including but not limited to, Congressional oversight, E-Verify publicity and media inquiries, determinations of compliance with Federal contractual requirements, and responses to inquiries under the Freedom of Information Act (FOIA).

G. The foregoing constitutes the full agreement on this subject between DHS and the Employer.

H. The individuals whose signatures appear below represent that they are authorized to enter into this MOU on behalf of the Employer and DHS respectively.





Company ID Number: 513478

To be accepted as a participant in E-Verify, you should only sign the Employer's Section of the signature page. If you have any questions, contact E-Verify at 888-464-4218.

<b>Employer Warrior Tractor &amp; Equipment Co., Inc.</b>	
<b>Stanley McCracken</b>	
Name (Please Type or Print)	Title
<b>Electronically Signed</b>	<b>03/01/2012</b>
Signature	Date
<b>Department of Homeland Security – Verification Division</b>	
<b>USCIS Verification Division</b>	
Name (Please Type or Print)	Title
<b>Electronically Signed</b>	<b>03/01/2012</b>
Signature	Date

Information Required for the E-Verify Program

Information relating to your Company:

Company Name:	Warrior Tractor & Equipment Co., Inc.
Company Facility Address:	6801 McFarland Blvd
	Northport, AL 35476
Company Alternate Address:	P O Box 412
	Northport, AL 35476
County or Parish:	TUSCALOOSA
Employer Identification Number:	630588737





Company ID Number: 513478

North American Industry Classification Systems Code:	423
Administrator:	Warrior Tractor and Equipment Co., Inc.
Number of Employees:	100 to 499
Number of Sites Verified for:	1
<b>Are you verifying for more than 1 site? If yes, please provide the number of sites verified for in each State:</b>	
<ul style="list-style-type: none"><li>• ALABAMA 1 site(s)</li></ul>	

**Information relating to the Program Administrator(s) for your Company on policy questions or operational problems:**

Name:	Stanley N McCracken		
Telephone Number:	(205) 339 - 0300	Fax Number:	(205) 333 - 0101
E-mail Address:	wte024@warriortractor.com		