

BID SUBMITTAL FORM
Alabama County Joint Bid Program
Heavy Equipment – Bid Item: 3CY Wheel Loader Option B

Company Name: WARRIOR TRACTOR & EQUIPMENT COMPANY, INC.
Address: 6801 MCFARLAND BLVD W
NORTHPORT, AL 35476
Bid Submitted by: DAVID SCHAFER
(Name of company representative)
Title: DISTRICT SALES MANAGER E-mail address: DSCHAFER@WARRIORTRACTOR.COM
Phone: 205-339-0300 Fax: 205-333-0101

By submitting this bid, we agree:

The equipment model number identified below meets the bid specs for this bid item

Initials



That the bid price will be honored for all counties for the period from Jan. 1, 2022 to Dec. 31, 2022.



The equipment will be delivered at the bid price to all counties participating in the joint bid program.



The company acknowledges the freight preparation and delivery price is to be included in the total bid price for the standard machine.



The company representative listed above will be the contact person for purchasing this bid item under the joint bid program.



The bid is accompanied by a current catalog or model specification document for the model number identified below.



The bid is accompanied by a copy of the manufacturer's standard warranty as required in the bid specifications.



The bid includes the e-verify documentation required by Alabama law.



If awarded the bid, a performance bond will be provided upon request.



The bid documents include the **Manufacturer's Suggested Retail Price Sheet (MSRP) for the Standard Machine.**



Total Bid Price for Standard Machine: \$ 176,493.00

(Total Bid Price for Standard Machine Includes Freight Preparation, Delivery and Standard Warranty Costs) *

Freight Preparation and Delivery: \$ 7,020.00

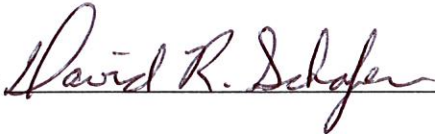
(Included in Standard Machine Bid Price)

Manufacturer's Suggested Retail Price for Standard Machine: \$ 278,413.00

Equipment Model #: JOHN DEERE 544P

Description: WHEEL LOADER

Signature of company representative submitting bid:



Title: DISTRICT SALES MANAGER

* **NOTE:** Award will be made based on the total cost of the **Standard Machine**. The total cost of the standard machine is to include the freight preparation, delivery and standard warranty cost. Freight preparation, delivery will be excluded from the total bid price of the standard machine in determining the percentage discount for any available options.

BID SUBMITTAL FORM: OPTION COST SHEET

By submitting this bid, we agree:

To offer any available options at the percent difference between the Manufacturer's Suggested Retail Price Sheet and the actual bid price on the Standard Machine*

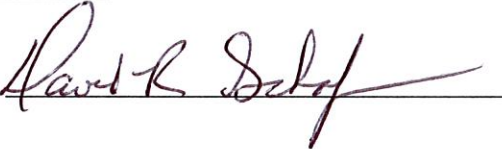


The bid documents include the **Manufacturer's Suggested Retail Price Sheet (MSRP)** for the Standard Machine



Equipment Model #: JOHN DEERE 544P

Description: WHEEL LOADER

Signature of company representative submitting bid: 

Title: DISTRICT SALES MANAGER

***Note:** The percent difference between the **Manufacturer's Suggested Retail Price Sheet (MSRP)** for the standard machine as specified by these **Bid Specifications** and the actual price bid by the vendor will be calculated to determine the percentage discount to be applied to any available options. The bid price of the freight preparation, delivery cost shall be excluded in determining the percentage discount to be applied to available options. Any individual county may choose to add any available option to the standard machine at the percentage discount at the time of purchase.

BID SPECIFICATIONS FOR 3 CY WHEEL LOADER- OPTION B

GENERAL

These specifications shall be construed as the minimum acceptable standards for a 3-yard wheel loader. Should the manufacturer's current published data or specifications exceed these standards, the manufacturer's standards shall be considered minimum and shall be furnished. All integral parts not specifically mentioned in the scope of these specifications that are necessary to provide a complete working unit shall be furnished. Additionally, the machine offered for bid shall include all standard manufacturer's equipment. The wheel loader must be a new current production model and shall meet all EPA and other applicable standards at the time of manufacturer.

The use of specific names and numbers in the specification is not intended to restrict the bidder or any seller or manufacturer, but is intended solely for the purpose of indicating the type, size and quality of equipment considered best adapted to the uses of counties participating in this joint bid.

BID SUBMITTAL FORM

Each bidder must submit his or her bid on the Bid Submittal Form included in the Invitation to Bid package. All written warranties to be submitted shall be attached to the Bid Submittal Form.

BID PRICE

The bid price shall include all destination charges, delivery charges, title fees, rebates, and all other applicable costs and refunds.

MANUALS

Each unit shall be provided with one (1) copy of the operator's manual, one (1) copy of the repair manual and one (1) copy of the current parts manual. Units will not be accepted for delivery until the manuals as outlined above are received by the purchaser.

REPLACEMENT PARTS AVAILABILITY

Parts must be available for 5 years or 7,500 hours of use for the piece of equipment bid. If replacement parts are not delivered within three (3) working days of an order being placed, the bidder will deliver an equivalent machine for the county to use at no cost to the county until such time as the parts are delivered to the county so it can affect repairs on its machine.

WARRANTY

Bidders shall submit a copy of the manufacturer's standard warranty. Warranty shall include service response time of maximum of 36 hours within notification by county.

Yes X No
Page # or
Attachment X

OPERATING HEIGHT

Machine shall be no taller than **11'2"** from ground to top of cab, so that the machine can be hauled by a low boy drop trailer.

Yes X No
Page # 21

DUMP CLEARANCE

The wheel loader dump clearance shall be no less than **8' 11"** at full height and 45 degree dump angle with a double arm Z bar configuration

Yes X No
Page # 21

STEERING

The wheel loader shall have a **40-degree** full turn articulation steering angle both right and left of center.

Yes X No
Page # 21

OPERATOR STATION

Cab shall be designed and built by the loader manufacturer.

Yes X No
Page # 34/35

Cab shall be enclosed and equipped with heater, air conditioner

Yes X No
Page # 34/35

Loader shall meet ROPS/FOPS regulations standard in North America.

Yes X No
Page # 34/35

Loader shall have easy to read gauges, gear selection, direction and RPM readings.

Yes X No
Page # 34/35

Loader shall have a standard hydraulic joystick which controls both lift and tilt functions. A remote transmission control switch on joystick to be standard.

Yes X No
Page # 34/35

Loader shall have fully adjustable, air suspension seat.

Yes X No
Page # 34/35

Loader shall be equipped with a Fire Extinguisher

Yes X No
Page # 34/35

Loader shall have retractable 3" seat belt.

Yes X No
Page # 34/35

POWERTRAIN

Engine must have a minimum of **six (6)** cylinders and turbocharged and **designed and manufactured by machine manufacturer.**

Yes X No
Page # 20

The loader shall be equipped with crankcase and powertrain guards.

Yes X No
Page # 34/35

All powertrain components shall be designed and built by loader manufacturer.

Yes X No
Page # 20

The engine shall have a minimum net HP of **163** at 1700 RPM with a minimum displacement of **414** cubic inches and **525** lbs. /ft. torque.

Yes X No
Page # 20

The engine shall meet all Tier 4/final emission requirements

Yes X No
Page # 20

Loader shall have electronic module to control engine timing and monitoring of vital engine systems.

Yes X No
Page # 20

Loader shall have fixed front axle with locking differential and oscillating rear axle ($\pm 11^\circ$) with open differential.

Yes X No
Page # 20

Loader shall have fully enclosed, adjustment free oil-disc brakes.

Yes X No
Page # 20

Unit shall be equipped with 20.5 R25 L3 XHA2 tires.

Yes X No
Page # ATTACH

Loader shall have powershift transmission designed and built by manufacturer. The loader shall have at minimum **4-forward/3** reverse with a minimum travel speed Forward of **24** mph and reverse of **15** mph.

Yes X No
Page # 20

Loader shall have computer-controlled modulation for smoother shifting.

Yes X No
Page # 20

Loader shall have manual shifting as well as auto shifting options. Auto shift will have full throttle (aggressive operation) and variable shift (economy mode) options.

Yes X No
Page # 20

INSTRUMENTATION

The wheel loader shall include the following gauges: hour meter, fuel, transmission or torque converter oil temperature and engine coolant temperature.

Yes X No
Page # 34/35

The wheel loader shall also include the following indicator lights: battery charge, engine oil pressure, low coolant level, parking brake warning, and low brake pressure.

Yes X No
Page # 34/35

HYDRAULIC SYSTEM:

Shall have a minimum flow of **55** gallons/minute.

Yes X No
Page # 20

WORK TOOLS

Bucket shall be designed and built by the loader manufacturer.

Yes X No
Page # 21

Bucket shall be in 3.0 CYD capacity (with bolt-on cutting edges and teeth).

Yes X No
Page # 21

SERVICEABILITY

All daily service points shall be accessible from the ground level and shall have sight gauges for radiator coolant, hydraulic oil and transmission oil.

Yes X No
Page # 34/35

All filters shall be vertically mounted and spin-on for ease of service and to prevent spilling during service

Yes X No
Page # 34/35

GENERAL

Unit shall be equipped with vandalism protection with locking service ports, cushioned steering stops, front fenders, and toolbox in addition to all other standard equipment.

Yes X No
Page # 34/35

OPERATING WEIGHT AND LIFT CAPACITIES

Unit shall be minimum of **30,000** lbs. operating and proper ballasting for **3.0** cubic yard bucket and 20.5-25 radial (L-3) tires.

Yes X No
Page # 21

Straight static tipping load shall be a minimum of **23,000** lbs.

Yes X No
Page # 21

Full turn (40°) static tipping load shall be a minimum of **19,500** lbs.

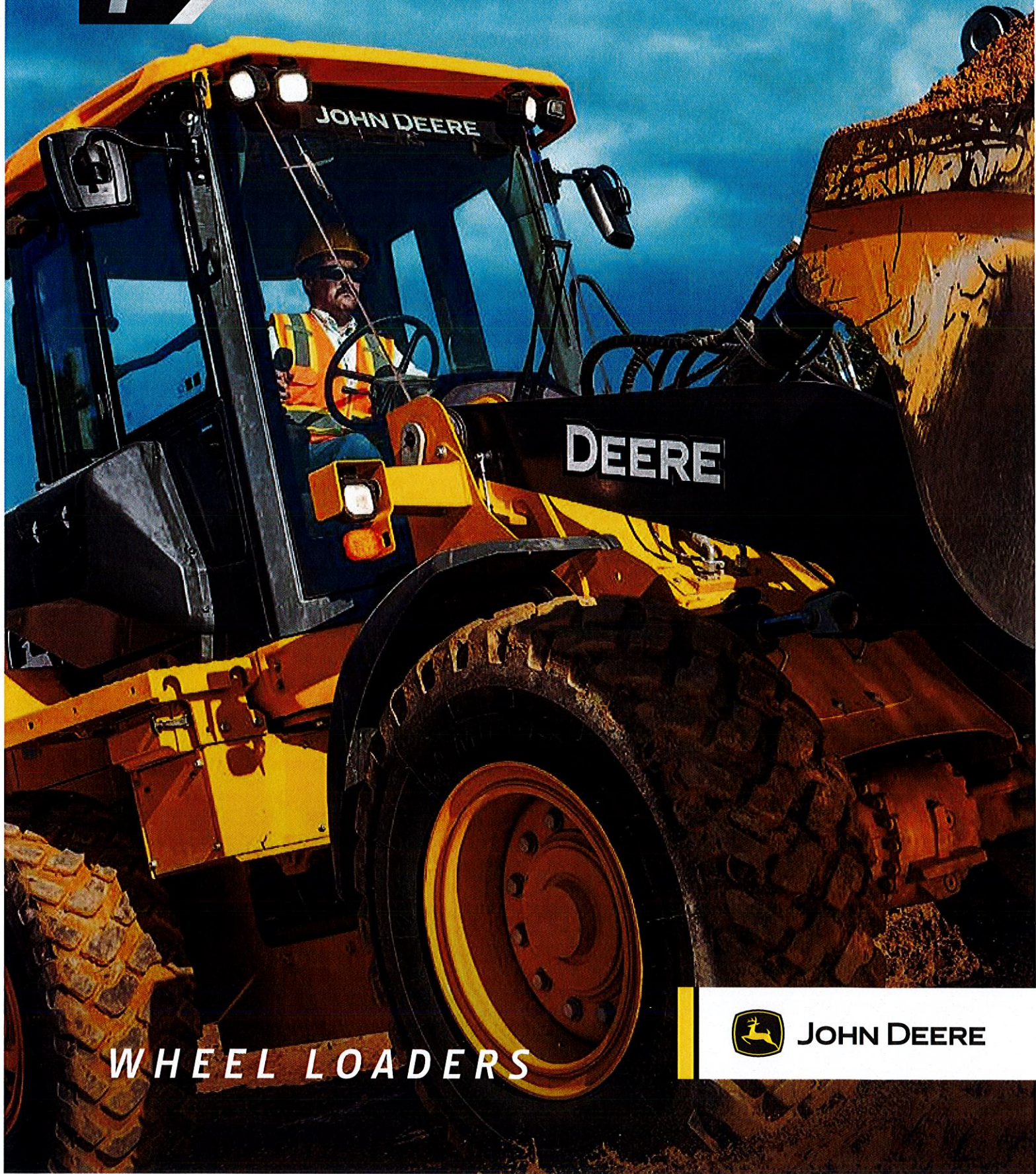
Yes X No
Page # 21

Breakout force shall be a minimum of **28,900** lbs.

Yes X No
Page # 21

444 / 524 / 544 / 624 / 644 / 724

P/



WHEEL LOADERS



JOHN DEERE



DEERE

***ELEVATE YOUR
EXPECTATIONS***

ABOVE AND BEYOND

INTRODUCING THE P-TIER WHEEL LOADERS

When your material-handling application needs a heavy-duty lift, add a P-Tier Wheel Loader to your lineup. Combining convenient front-end features with near-parallel lift, spacious operator stations including customizable ergonomic electrohydraulic (EH) controls, and streamlined electrical and hydraulic routing, these versatile and productive mid-size models are designed to help you take your operation to the next level.



**INTUITIVE
CONTROLS**

Take control

Operators can easily control up to six functions without letting go of the ergonomically designed joystick. Two industry-exclusive multifunction buttons can each be programmed to handle any of up to 10 functions selected through the monitor, including bucket vibrate and EH Precision mode.

The bucket list

A wide selection of enhanced production buckets with integrated spill guards, curved side cutters, and impressive rollback delivers elevated bucket-fill performance and material retention compared to earlier offerings.

Remote diagnostics and support

To maximize uptime and lower costs, JDLINK™ telematics provides machine location, utilization data, and alerts to help you maximize productivity and efficiency. JDLINK also enables John Deere Connected Support™. Dealers use Expert Alerts based on data from thousands of connected machines to proactively address conditions that may otherwise likely lead to downtime. Your dealer can also monitor machine health and leverage remote diagnostics and programming capability to further diagnose problems and even update machine software without a time-consuming trip to the jobsite.*

*Availability varies by region. Options not available in every country.

At the forefront

Featuring bucket and linkage designs that improve load leveling, material retention, and visibility, these loaders yield more productivity and performance than previous models.

It's easy to see

Large seven-inch in-cab display with easy-on-the-eyes clarity enables intuitive push-button access to key info. Standard rearview camera displays the activity behind the machine on the color LCD screen.

On your side

All daily service points including fuel refill are conveniently grouped at ground level on the left side of the machine for easy access. Routing of electrical wire harnesses and hydraulic hoses has been streamlined.

FIND YOUR FIT



LEADING EDGE
Premium edge with innovative technology



EXCEPTIONAL PERFORMANCE
Advanced features and performance



RUGGED AND RELIABLE
Proven capabilities and value



444

P-TIER WHEEL LOADER



**VERSATILE BUCKET +
LINKAGE DESIGNS**



DREAM IT AND DO IT.

Agility and capability combine with performance and reliability to help keep you productive all day long. With a 444 P-Tier Wheel Loader in your fleet, you might as well consider it done.

Fork in the road

Available in 48-, 60-, and 72-inch lengths, improved shaft-style forks enable better visibility to the fork tips compared to previous models.

Have a seat

Spacious and comfortable cab features extra legroom, an improved HVAC system, additional storage, and a more adjustable seat than earlier models.

Z-Bar linkage

Lift path on Z-Bar linkage is near parallel. Better load-leveling capability compared to K-Series models minimizes load rollback, reduces material spillage, and requires fewer manual adjustments. Cross-tube and boom geometry of the Z-Bar linkage has been streamlined to provide a better view to the front attachment.



**8° OF
PARALLELISM**
VS. 21° ON K-SERIES

OVERACHIEVERS

ASPIRE TO GO HIGHER.

With handy front-end features and plenty of productivity-boosting enhancements over previous models, our 524, 544, and 624 P-Tier Wheel Loaders redefine expectations about the heights a utility loader can reach.

Get carried away

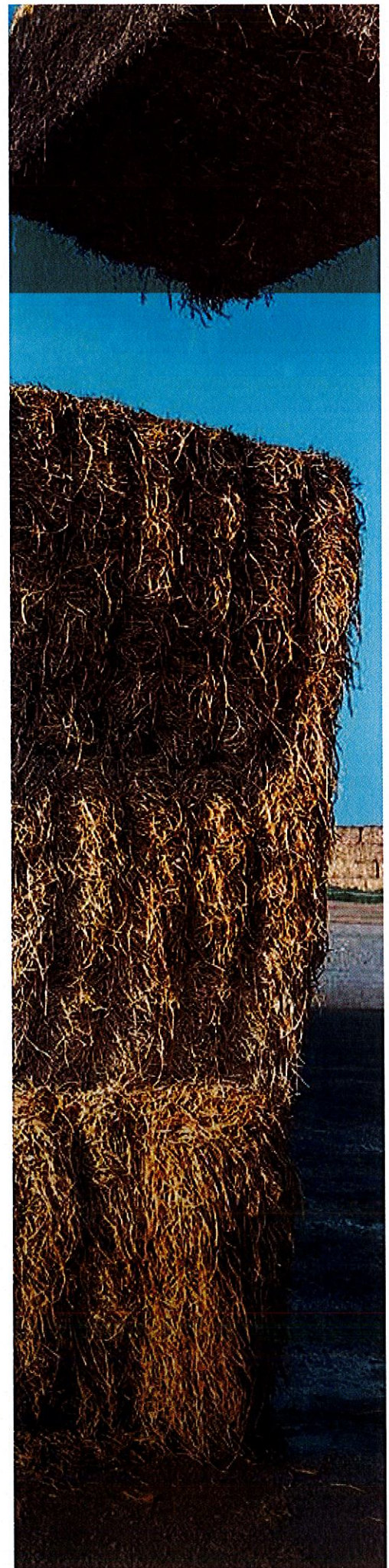
Tool Carrier configuration on the 524 and 624 enables a clear view of the coupler and forks, making it easier to quickly move pipes, logs, and pallets.

Pretty big plus

High-Lift Plus configuration provides an additional 24 inches of hinge-pin height over standard lift height and 12 inches over the High-Lift model. All three lift heights feature near-parallel lift.

Fitting in

Improved visibility to the work tool helps reduce spillage as well as cycle and tool-changeover times. It also helps minimize machine damage when working on crowded jobsites or up against walls.





524 544 624

P-TIER WHEEL LOADERS

3" MORE LEGROOM
THAN K-SERIES CABS



644 724

P-TIER WHEEL LOADERS



**2 INDUSTRY-EXCLUSIVE
MULTIFUNCTION BUTTONS**



GET AHEAD

MOVING FORWARD.

Designed to elevate your productivity, the 644 and 724 P-Tier Wheel Loaders help you put your best foot forward.

Reach your potential

Three additional inches of hinge-pin height on the 724 over the 724K provides more clearance for dumping into high feeders, hoppers, trucks, and wagons.

Smooth operator

Seat-mounted right-hand joystick features two programmable multi-function buttons and electrohydraulic (EH) controls that are more intuitive to operate compared to our K-Series controls.

In the office

Roomy cab boasts three more inches of legroom than earlier models. Joystick controls, foot pedals, and sealed-switch module are all ergonomically placed for optimal comfort and convenience.



**EASY-TO-USE
ELECTROHYDRAULIC
CONTROLS**





While general information, pictures, and descriptions are provided, some illustrations and text may include product options and accessories NOT AVAILABLE in all regions, and in some countries products and accessories may require modifications or additions to ensure compliance with the local regulations of those countries.

624 P-TIER Z-BAR / HIGH-LIFT / HIGH-LIFT PLUS / TOOL CARRIER				
Engine				
Manufacturer and Model	John Deere PowerTech™ PVS 6068	Gross Peak Torque (ISO 9249)	923 Nm (681 ft.-lb.) at 1,500 rpm	
Non-Road Emission Standard	EPA Final Tier 4/EU Stage V	Net Torque Rise	58% standard	
Cylinders	6	Fuel System (electronically controlled)	High-pressure common rail	
Valves Per Cylinder	4	Lubrication	Full-flow spin-on filter and integral cooler	
Displacement	6.8 L (414 cu. in.)	Aspiration	Turbocharged, charge air cooled	
Net Peak Power (ISO 9249)	143 kW (192 hp) at 1,600 rpm	Air Cleaner	Under-hood, dual-element dry type, restriction indicator in cab monitor for service	
Gross Peak Power (ISO 9249)	152 kW (203 hp) at 1,600 rpm			
Net Peak Torque (ISO 9249)	874 Nm (644 lb.-ft.) at 1,300 rpm			
Cooling				
Fan Drive	Hydraulically driven, proportionally controlled, fan aft of coolers			
Electrical				
Electrical System	24 volt with 130-amp alternator			
Batteries (2 – 12 volt)	950 CCA (each)			
Transmission System				
Type	Countershaft-type PowerShift™			
Torque Converter	Single stage, single phase			
Shift Control	Electronically modulated, adaptive, load and speed dependent			
Operator Interface	Steering-column or joystick-mounted F-N-R and gear-select lever; kick-down button on hydraulic lever			
Shift Modes	Manual/auto (1st-D or 2nd-D); Quick-Shift button with 2 selectable modes: kick-down or kick-up/down; and 4 clutch cutoff settings			
	Standard 5-Speed With Lockup Torque Converter		Optional 5-Speed Without Lockup Torque Converter	
Maximum Travel Speeds (with 20.5 R 25 tires)	Forward	Reverse	Forward	Reverse
Range 1	7.0 km/h (4.3 mph)	6.6 km/h (4.1 mph)	6.3 km/h (3.9 mph)	6.7 km/h (4.1 mph)
Range 2	12.1 km/h (7.5 mph)	12.8 km/h (7.9 mph)	11.4 km/h (7.0 mph)	12.0 km/h (7.4 mph)
Range 3	18.7 km/h (11.6 mph)	30.7 km/h (19.0 mph)	17.5 km/h (10.8 mph)	28.7 km/h (17.8 mph)
Range 4	29.1 km/h (18.1 mph)	N/A	27.2 km/h (16.9 mph)	N/A
Range 5	40.0 km/h (24.8 mph)	N/A	40.0 km/h (24.8 mph)	N/A
Axles/Brakes				
Final Drives	Heavy-duty inboard-mounted planetary			
Differentials	Hydraulic locking front with conventional rear — standard; dual locking front and rear — optional			
Rear Axle Oscillation, Stop to Stop (with 20.5 R 25 tires)	24 deg. (12 deg. each direction)			
Brakes (conform to ISO 3450)				
Service	Hydraulically actuated, spring-retracted, self-adjusting inboard sun-shaft mounted, oil cooled, single disc			
Parking	Automatic spring applied, hydraulically released, driveline mounted, oil-cooled, multi disc			
Tires/Wheels (see page 30 for complete tire adjustments)				
	Tread Width	Width Over Tires		
Michelin 20.5 R 25, 1 Star L-3 XHA2	2053 mm (80.8 in.)	2657 mm (104.6 in.)		
Serviceability				
Refill Capacities				
Fuel Tank (with lockable cap)	299 L (79 gal.)	Axle Oil (each)		
Cooling System	36.5 L (38.6 qt.)	Front	22 L (23 qt.)	
Diesel Exhaust Fluid (DEF)	15.6 L (16.5 qt.)	Rear	17 L (18 qt.)	
Engine Oil With Vertical Spin-On Filter	19.5 L (20.6 qt.)	Hydraulic Reservoir and Filter	102.8 L (27.2 gal.)	
Transmission Reservoir With Vertical Filter	27 L (28.5 qt.)	Park Brake Oil (wet disc)	0.3 L (10 oz.)	
Hydraulic System/Steering				
Pump (loader and steering)	Variable-displacement, axial-piston pump; closed-center, pressure-compensating system			
Maximum Rated Flow at 6895 kPa (1,000 psi) and 2,200 rpm	261 L/m (69 gpm)			
System Relief Pressure (loader and steering)	24 821 kPa (3,675 psi)			
Loader Controls	2-function valve, joystick control or fingertip controls, hydraulic-function enable/disable, optional 3rd- and 4th-function valve with auxiliary lever			
Steering (conforms to ISO 5010)	Steering-column-mounted, twist-grip shift lever; Quick-Shift button on hydraulic lever			
Type	Power, fully hydraulic			
Articulation Angle	80-deg. arc (40 deg. each direction)			
Turning Radius (measured to centerline of outside tire)	5.27 m (17 ft. 4 in.)			

624 P-TIER WHEEL LOADER SPECIFICATIONS

624

P

While general information, pictures, and descriptions are provided, some illustrations and text may include product options and accessories NOT AVAILABLE in all regions, and in some countries products and accessories may require modifications or additions to ensure compliance with the local regulations of those countries.

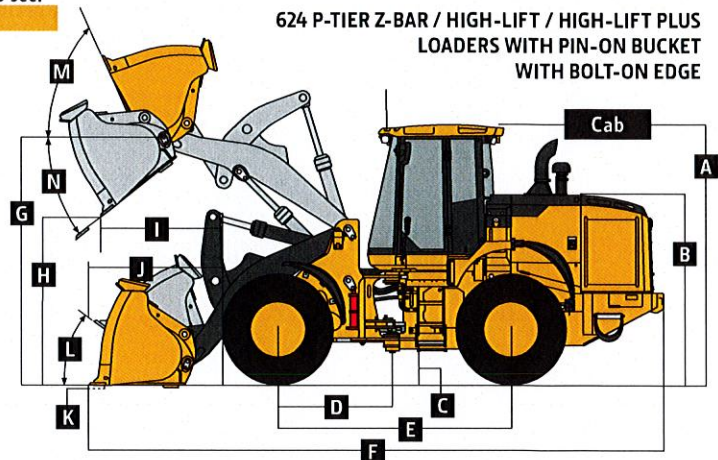
Hydraulic System/Steering (continued) 624 P-TIER Z-BAR / HIGH-LIFT / HIGH-LIFT PLUS / TOOL CARRIER

Hydraulic Cycle Times	Z-Bar / High-Lift / High-Lift Plus	Tool Carrier
Raise	5.5 sec.	5.8 sec.
Dump	2.0 sec.	2.5 sec.
Lower (power down)	4.0 sec.	4.0 sec.
Total	11.5 sec.	12.3 sec.

Bucket Capacity Range

Bucket Type	
Pin-On	2.7–2.9 m³ (3.5–3.75 cu. yd.)
Coupler	1.9–4.0 m³ (2.5–5.25 cu. yd.)

Dimensions and Specifications With Pin-On Bucket With Bolt-On Edge



	Z-Bar	Z-Bar	High-Lift	High-Lift	High-Lift Plus	High-Lift Plus
	2.7-m³ (3.5 cu. yd.)	2.9-m³ (3.75 cu. yd.)	2.7-m³ (3.5 cu. yd.)	2.9-m³ (3.75 cu. yd.)	2.7-m³ (3.5 cu. yd.)	2.9-m³ (3.75 cu. yd.)
	general purpose	general purpose	general purpose	general purpose	general purpose	general purpose
Dimensions With Bucket With Bolt-On Edge (illustration above right)						
A Height to Top of Cab	3.40 m (11 ft. 2 in.)	3.40 m (11 ft. 2 in.)	3.40 m (11 ft. 2 in.)	3.40 m (11 ft. 2 in.)	3.40 m (11 ft. 2 in.)	3.40 m (11 ft. 2 in.)
B Hood Height	2.46 m (8 ft. 1 in.)	2.46 m (8 ft. 1 in.)	2.46 m (8 ft. 1 in.)	2.46 m (8 ft. 1 in.)	2.46 m (8 ft. 1 in.)	2.46 m (8 ft. 1 in.)
C Ground Clearance	384 mm (15.1 in.)	384 mm (15.1 in.)	384 mm (15.1 in.)	384 mm (15.1 in.)	384 mm (15.1 in.)	384 mm (15.1 in.)
D Length From Centerline to Front Axle	1.52 m (5 ft. 0 in.)	1.52 m (5 ft. 0 in.)	1.52 m (5 ft. 0 in.)	1.52 m (5 ft. 0 in.)	1.52 m (5 ft. 0 in.)	1.52 m (5 ft. 0 in.)
E Wheelbase	3.09 m (10 ft. 1 in.)	3.09 m (10 ft. 1 in.)	3.09 m (10 ft. 1 in.)	3.09 m (10 ft. 1 in.)	3.09 m (10 ft. 1 in.)	3.09 m (10 ft. 1 in.)
F Overall Length, Bucket on Ground	7.76 m (25 ft. 6 in.)	7.83 m (25 ft. 8 in.)	8.22 m (27 ft. 0 in.)	8.22 m (27 ft. 0 in.)	8.52 m (27 ft. 11 in.)	8.58 m (28 ft. 2 in.)
G Height to Hinge Pin, Fully Raised	3.96 m (13 ft. 0 in.)	3.96 m (13 ft. 0 in.)	4.32 m (14 ft. 2 in.)	4.32 m (14 ft. 2 in.)	4.57 m (15 ft. 0 in.)	4.57 m (15 ft. 0 in.)
H Dump Clearance, 45 deg., Full Height	2.84 m (9 ft. 4 in.)	2.80 m (9 ft. 2 in.)	3.20 m (10 ft. 6 in.)	3.16 m (10 ft. 4 in.)	3.46 m (11 ft. 4 in.)	3.41 m (11 ft. 2 in.)
I Reach, 45-deg. Dump, Full Height	1.07 m (3 ft. 6 in.)	1.12 m (3 ft. 8 in.)	1.21 m (4 ft. 0 in.)	1.25 m (4 ft. 1 in.)	1.22 m (4 ft. 0 in.)	1.27 m (4 ft. 2 in.)
J Reach, 45-deg. Dump, 2.13-m (7 ft. 0 in.) Clearance	1.59 m (5 ft. 2 in.)	1.61 m (5 ft. 3 in.)	1.98 m (6 ft. 6 in.)	2.00 m (6 ft. 7 in.)	2.20 m (7 ft. 2 in.)	2.22 m (7 ft. 3 in.)
K Maximum Digging Depth	0.10 m (4 in.)	0.11 m (4 in.)	0.20 m (8 in.)	0.21 m (8 in.)	0.20 m (8 in.)	0.20 m (8 in.)
L Maximum Rollback at Ground Level	44 deg.	44 deg.	48 deg.	48 deg.	49 deg.	49 deg.
M Maximum Rollback, Boom Fully Raised	60 deg.	60 deg.	60 deg.	60 deg.	60 deg.	60 deg.
N Maximum Bucket Dump Angle, Fully Raised	48 deg.	48 deg.	46 deg.	46 deg.	45 deg.	45 deg.
Loader Clearance Circle, Bucket Carry Position	12.02 m (39 ft. 5 in.)	12.04 m (39 ft. 6 in.)	12.32 m (40 ft. 5 in.)	12.5 m (41 ft. 0 in.)	12.66 m (41 ft. 6 in.)	12.78 m (41 ft. 11 in.)
Specifications With Bucket With Bolt-On Edge						
Capacity, Heaped	2.7 m³ (3.5 cu. yd.)	2.9 m³ (3.75 cu. yd.)	2.7 m³ (3.5 cu. yd.)	2.9 m³ (3.75 cu. yd.)	2.7 m³ (3.5 cu. yd.)	2.9 m³ (3.75 cu. yd.)
Capacity, Struck	2.2 m³ (2.9 cu. yd.)	2.4 m³ (3.1 cu. yd.)	2.2 m³ (2.9 cu. yd.)	2.4 m³ (3.1 cu. yd.)	2.2 m³ (2.9 cu. yd.)	2.4 m³ (3.1 cu. yd.)
Bucket Weight With Bolt-On Cutting Edge	1196 kg (2,637 lb.)	1239 kg (2,732 lb.)	1196 kg (2,637 lb.)	1239 kg (2,732 lb.)	1196 kg (2,637 lb.)	1239 kg (2,732 lb.)
Bucket Width	2.69 m (8 ft. 10 in.)	2.69 m (8 ft. 10 in.)	2.69 m (8 ft. 10 in.)	2.69 m (8 ft. 10 in.)	2.69 m (8 ft. 10 in.)	2.69 m (8 ft. 10 in.)
Breakout Force	13 605 kg (29,994 lb.)	12 929 kg (28,503 lb.)	13 443 kg (29,638 lb.)	12 774 kg (28,163 lb.)	13 510 kg (29,785 lb.)	12 839 kg (28,304 lb.)
Tipping Load, Straight, No Tire Deflection	13 205 kg (29,113 lb.)	13 116 kg (28,915 lb.)	11 132 kg (24,541 lb.)	11 060 kg (24,383 lb.)	10 297 kg (22,701 lb.)	10 231 kg (22,555 lb.)
Tipping Load, Straight, With Tire Deflection	12 435 kg (27,414 lb.)	12 345 kg (27,216 lb.)	10 563 kg (23,287 lb.)	10 488 kg (23,122 lb.)	9792 kg (21,588 lb.)	9723 kg (21,436 lb.)
Tipping Load, 40-deg. Full Turn, No Tire Deflection	11 439 kg (25,218 lb.)	11 359 kg (25,042 lb.)	9595 kg (21,153 lb.)	9530 kg (21,010 lb.)	8837 kg (19,483 lb.)	8778 kg (19,351 lb.)
Tipping Load, 40-deg. Full Turn, With Tire Deflection	10 425 kg (22,983 lb.)	10 338 kg (22,791 lb.)	8820 kg (19,445 lb.)	8754 kg (19,299 lb.)	8145 kg (17,957 lb.)	8091 kg (17,838 lb.)
Rated Operating Load, 50% Full-Turn Tipping Load, No Tire Deflection (conforms to ISO 14397-1)*	5719 kg (12,609 lb.)	5680 kg (12,521 lb.)	4797 kg (10,576 lb.)	4765 kg (10,505 lb.)	4419 kg (9,741 lb.)	4389 kg (9,676 lb.)
Rated Operating Load, 50% Full-Turn Tipping Load, With Tire Deflection (conforms to ISO 14397-1)*	5213 kg (11,492 lb.)	5169 kg (11,396 lb.)	4410 kg (9,722 lb.)	4377 kg (9,650 lb.)	4073 kg (8,978 lb.)	4046 kg (8,919 lb.)
Operating Weight	15 747 kg (34,715 lb.)	15 790 kg (34,810 lb.)	15 953 kg (35,171 lb.)	15 996 kg (35,266 lb.)	16 195 kg (35,703 lb.)	16 238 kg (35,798 lb.)

Loader operating information is based on machine with identified linkage and standard equipment, PowerTech PVS 6068 (EPA Final Tier 4/EU Stage V) engine, ROPS cab, rear cast bumper/counterweight, transmission side-frame guards, bottom guards, standard tires, full fuel tank, and 79-kg (175 lb.) operator. This information is affected by changes in tires, ballast, and different attachments, and assumes no tire deflection per the standard ISO 14397-1 section 5.

*Rated operating capacity based on Deere attachments only.

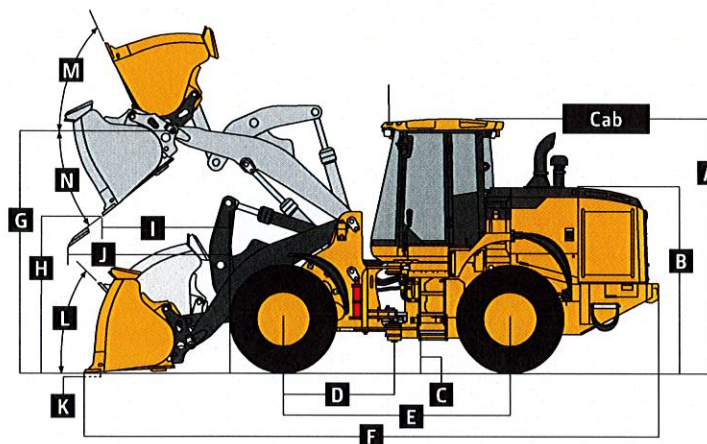
624 P TIER

While general information, pictures, and descriptions are provided, some illustrations and text may include product options and accessories NOT AVAILABLE in all regions, and in some countries products and accessories may require modifications or additions to ensure compliance with the local regulations of those countries.

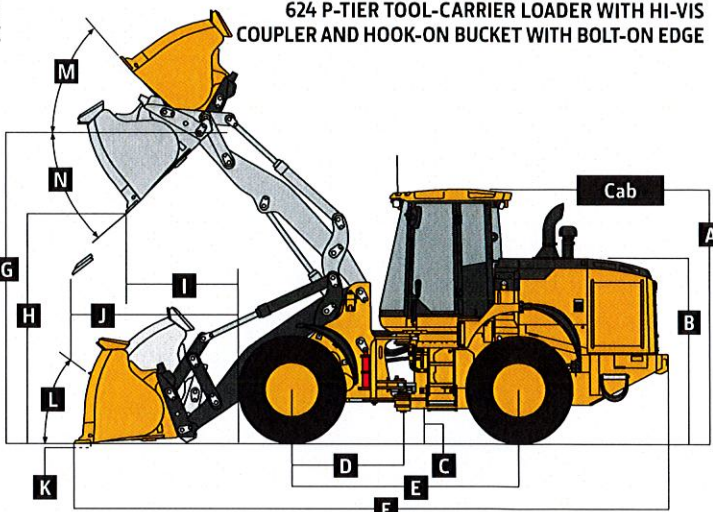
Dimensions and Specifications With Hi-Vis Coupler and Hook-On Bucket With Bolt-On Edge

624 P-TIER Z-BAR / HIGH-LIFT / HIGH-LIFT PLUS / TOOL CARRIER

624 P-TIER Z-BAR / HIGH-LIFT / HIGH-LIFT PLUS LOADERS WITH HI-VIS COUPLER AND HOOK-ON BUCKET WITH BOLT-ON EDGE



624 P-TIER TOOL-CARRIER LOADER WITH HI-VIS COUPLER AND HOOK-ON BUCKET WITH BOLT-ON EDGE



	Z-Bar 2.7-m³ (3.5 cu. yd.) general purpose	Z-Bar 4.0-m³ (5.25 cu. yd.) light material purpose	High-Lift 2.5-m³ (3.25 cu. yd.) general purpose	High-Lift 3.4-m³ (4.5 cu. yd.) light material purpose	High-Lift Plus 2.3-m³ (3.0 cu. yd.) general purpose	High-Lift Plus 3.1-m³ (4.0 cu. yd.) light material purpose	Tool Carrier 2.7-m³ (3.5 cu. yd.) general purpose	Tool Carrier 3.4-m³ (4.5 cu. yd.) light material purpose
Dimensions With Bucket With Bolt-On Edge (illustrations above)								
A Height to Top of Cab	3.40 m (11 ft. 2 in.)	3.40 m (11 ft. 2 in.)	3.40 m (11 ft. 2 in.)	3.40 m (11 ft. 2 in.)	3.40 m (11 ft. 2 in.)	3.40 m (11 ft. 2 in.)	3.40 m (11 ft. 2 in.)	3.40 m (11 ft. 2 in.)
B Hood Height	2.46 m (8 ft. 1 in.)	2.46 m (8 ft. 1 in.)	2.46 m (8 ft. 1 in.)	2.46 m (8 ft. 1 in.)	2.46 m (8 ft. 1 in.)	2.46 m (8 ft. 1 in.)	2.46 m (8 ft. 1 in.)	2.46 m (8 ft. 1 in.)
C Ground Clearance	384 mm (15.1 in.)	384 mm (15.1 in.)	384 mm (15.1 in.)	384 mm (15.1 in.)	384 mm (15.1 in.)	384 mm (15.1 in.)	384 mm (15.1 in.)	384 mm (15.1 in.)
D Length From Centerline to Front Axle	1.52 m (5 ft. 0 in.)	1.52 m (5 ft. 0 in.)	1.52 m (5 ft. 0 in.)	1.52 m (5 ft. 0 in.)	1.52 m (5 ft. 0 in.)	1.52 m (5 ft. 0 in.)	1.52 m (5 ft. 0 in.)	1.52 m (5 ft. 0 in.)
E Wheelbase	3.09 m (10 ft. 1 in.)	3.09 m (10 ft. 1 in.)	3.09 m (10 ft. 1 in.)	3.09 m (10 ft. 1 in.)	3.09 m (10 ft. 1 in.)	3.09 m (10 ft. 1 in.)	3.09 m (10 ft. 1 in.)	3.09 m (10 ft. 1 in.)
F Overall Length, Bucket on Ground	7.89 m (25 ft. 11 in.)	8.04 m (26 ft. 5 in.)	8.31 m (27 ft. 3 in.)	8.50 m (27 ft. 11 in.)	8.53 m (28 ft. 0 in.)	8.66 m (28 ft. 5 in.)	7.99 m (26 ft. 2 in.)	8.13 m (26 ft. 8 in.)
G Height to Hinge Pin, Fully Raised	3.96 m (13 ft. 0 in.)	3.96 m (13 ft. 0 in.)	4.32 m (14 ft. 2 in.)	4.32 m (14 ft. 2 in.)	4.57 m (15 ft. 0 in.)	4.57 m (15 ft. 0 in.)	4.00 m (13 ft. 1 in.)	4.00 m (13 ft. 1 in.)
H Dump Clearance, 45 deg., Full Height	2.76 m (9 ft. 1 in.)	2.66 m (8 ft. 9 in.)	3.15 m (10 ft. 4 in.)	3.02 m (9 ft. 11 in.)	3.45 m (11 ft. 4 in.)	3.37 m (11 ft. 1 in.)	2.74 m (9 ft. 0 in.)	2.64 m (8 ft. 8 in.)
I Reach, 45-deg. Dump, Full Height	1.17 m (3 ft. 10 in.)	1.28 m (4 ft. 2 in.)	1.28 m (4 ft. 2 in.)	1.42 m (4 ft. 8 in.)	1.24 m (4 ft. 1 in.)	1.34 m (4 ft. 5 in.)	1.39 m (4 ft. 7 in.)	1.51 m (4 ft. 11 in.)
J Reach, 45-deg. Dump, 2.13 m (7 ft. 0 in.) Clearance	1.64 m (5 ft. 5 in.)	1.69 m (5 ft. 7 in.)	2.03 m (6 ft. 8 in.)	2.10 m (6 ft. 11 in.)	2.21 m (7 ft. 3 in.)	2.27 m (7 ft. 6 in.)	1.83 m (6 ft. 0 in.)	1.89 m (6 ft. 2 in.)
K Maximum Digging Depth	0.10 m (4 in.)	0.11 m (4 in.)	0.20 m (8 in.)	0.21 m (8 in.)	0.19 m (7 in.)	0.19 m (7 in.)	0.13 m (5 in.)	0.13 m (5 in.)
L Maximum Rollback at Ground Level	44 deg.	44 deg.	48 deg.	48 deg.	49 deg.	49 deg.	52 deg.	52 deg.
M Maximum Rollback, Boom Fully Raised	60 deg.	60 deg.	60 deg.	60 deg.	60 deg.	60 deg.	57 deg.	57 deg.
N Maximum Bucket Dump Angle, Fully Raised	48 deg.	48 deg.	46 deg.	45 deg.	45 deg.	45 deg.	50 deg.	50 deg.
Loader Clearance Circle, Bucket Carry Position	12.06 m (39 ft. 7 in.)	12.44 m (40 ft. 10 in.)	12.34 m (40 ft. 6 in.)	12.80 m (42 ft. 0 in.)	12.76 m (41 ft. 11 in.)	13.00 m (42 ft. 8 in.)	12.24 m (40 ft. 2 in.)	12.5 m (41 ft. 0 in.)
Specifications With Bucket With Bolt-On Edge								
Capacity, Heaped	2.7 m³ (3.5 cu. yd.)	4.0 m³ (5.25 cu. yd.)	2.5 m³ (3.25 cu. yd.)	3.4 m³ (4.5 cu. yd.)	2.3 m³ (3.0 cu. yd.)	3.1 m³ (4.0 cu. yd.)	2.7 m³ (3.5 cu. yd.)	3.4 m³ (4.5 cu. yd.)
Capacity, Struck	2.17 m³ (2.8 cu. yd.)	3.46 m³ (4.53 cu. yd.)	2.1 m³ (2.7 cu. yd.)	2.9 m³ (3.8 cu. yd.)	1.9 m³ (2.4 cu. yd.)	2.6 m³ (3.4 cu. yd.)	1.9 m³ (2.4 cu. yd.)	2.9 m³ (3.8 cu. yd.)
Bucket Weight With Bolt-On Cutting Edge	1655 kg (3,649 lb.)	1925 kg (4,245 lb.)	1633 kg (3,601 lb.)	1843 kg (4,063 lb.)	1586 kg (3,496 lb.)	1780 kg (3,924 lb.)	1437 kg (3,167 lb.)	1626 kg (3,584 lb.)
Bucket Width	2.68 m (8 ft. 10 in.)	3.05 m (10 ft. 0 in.)	2.69 m (8 ft. 10 in.)	2.89 m (9 ft. 6 in.)	2.69 m (8 ft. 10 in.)	2.89 m (9 ft. 6 in.)	2.68 m (8 ft. 10 in.)	2.89 m (9 ft. 6 in.)
Breakout Force	12 161 kg (26,810 lb.)	10 789 kg (23,785 lb.)	13 052 kg (28,776 lb.)	10 709 kg (23,610 lb.)	13 266 kg (29,246 lb.)	11 874 kg (26,302 lb.)	11 477 kg (25,302 lb.)	10 290 kg (22,686 lb.)
Tipping Load, Straight, No Tire Deflection	12 357 kg (27,242 lb.)	11 990 kg (26,434 lb.)	10 624 kg (23,422 lb.)	10 177 kg (22,437 lb.)	9779 kg (21,559 lb.)	9547 kg (21,071 lb.)	11 577 kg (25,523 lb.)	11 544 kg (25,450 lb.)
Tipping Load, Straight, With Tire Deflection	11 613 kg (25,602 lb.)	11 220 kg (24,736 lb.)	10 074 kg (22,209 lb.)	9600 kg (21,164 lb.)	9294 kg (20,490 lb.)	9042 kg (19,577 lb.)	10 920 kg (24,074 lb.)	10 854 kg (23,929 lb.)
Tipping Load, 40-deg. Full Turn, No Tire Deflection	10 652 kg (23,483 lb.)	10 292 kg (22,690 lb.)	9130 kg (20,127 lb.)	8690 kg (19,158 lb.)	8348 kg (18,405 lb.)	8120 kg (17,581 lb.)	9993 kg (22,031 lb.)	9939 kg (21,912 lb.)
Tipping Load, 40-deg. Full Turn, With Tire Deflection	9663 kg (21,303 lb.)	9273 kg (20,443 lb.)	8385 kg (18,486 lb.)	7911 kg (17,441 lb.)	7686 kg (16,945 lb.)	7437 kg (16,032 lb.)	9108 kg (20,080 lb.)	9006 kg (19,855 lb.)

Dimensions and Specifications With Hi-Vis Coupler and Hook-On Bucket With Bolt-On Edge (continued)

624 P-TIER Z-BAR / HIGH-LIFT / HIGH-LIFT PLUS / TOOL CARRIER

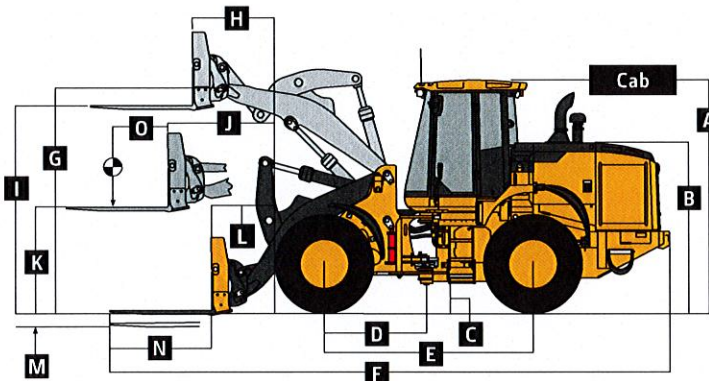
	Z-Bar 2.7-m³ (3.5 cu. yd.) general purpose	Z-Bar 4.0-m³ (5.25 cu. yd.) light material	High-Lift 2.5-m³ (3.25 cu. yd.) general purpose	High-Lift 3.4-m³ (4.5 cu. yd.) light material	High-Lift Plus 2.3-m³ (3.0 cu. yd.) general purpose	High-Lift Plus 3.1-m³ (4.0 cu. yd.) light material	Tool Carrier 2.7-m³ (3.5 cu. yd.) general purpose	Tool Carrier 3.4-m³ (4.5 cu. yd.) light material
Rated Operating Load, 50% Full-Turn (conforms to ISO 14397-1)*	5326 kg (11,742 lb.)	5146 kg (11,345 lb.)	4565 kg (10,064 lb.)	4345 kg (9,579 lb.)	4174 kg (9,203 lb.)	4060 kg (8,790 lb.)	4997 kg (11,015 lb.)	4970 kg (10,956 lb.)
Rated Operating Load, 50% Full-Turn Tipping Load, With Tire Deflection (conforms to ISO 14397-1)*	4832 kg (10,652 lb.)	4637 kg (10,222 lb.)	4193 kg (9,243 lb.)	3956 kg (8,720 lb.)	3843 kg (8,472 lb.)	3719 kg (8,016 lb.)	4554 kg (10,040 lb.)	4503 kg (9,927 lb.)
Operating Weight	16 225 kg (35,769 lb.)	16 495 kg (36,365 lb.)	16 410 kg (36,178 lb.)	16 620 kg (36,641 lb.)	16 605 kg (36,607 lb.)	16 799 kg (37,174 lb.)	15 939 kg (35,140 lb.)	16 128 kg (35,556 lb.)

Loader operating information is based on machine with identified linkage and standard equipment, PowerTech PVS 6068 (EPA Final Tier 4/EU Stage V) engine, ROPS cab, rear cast bumper/counterweight, transmission side-frame guards, bottom guards, standard tires, full fuel tank, and 79-kg (175 lb.) operator. This information is affected by changes in tires, ballast, and different attachments, and assumes no tire deflection per the standard ISO 14397-1 section 5.

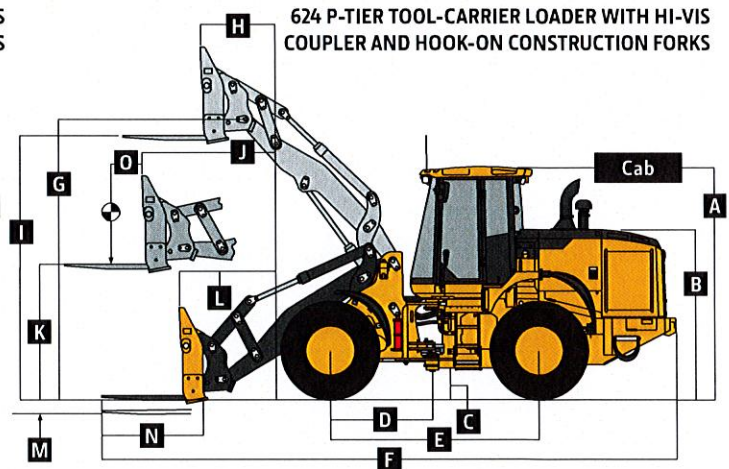
*Rated operating capacity based on Deere attachments only.

Dimensions and Specifications With Hi-Vis Coupler and Hook-On Construction Forks

624 P-TIER Z-BAR / HIGH-LIFT / HIGH-LIFT PLUS LOADERS WITH HI-VIS COUPLER AND HOOK-ON CONSTRUCTION FORKS



624 P-TIER TOOL-CARRIER LOADER WITH HI-VIS COUPLER AND HOOK-ON CONSTRUCTION FORKS



	Z-Bar 1.52-m (60 in.) tine length	Z-Bar 1.83-m (72 in.) tine length	High-Lift 1.52-m (60 in.) tine length	High-Lift 1.83-m (72 in.) tine length	High-Lift Plus 1.52-m (60 in.) tine length	High-Lift Plus 1.83-m (72 in.) tine length	Tool Carrier 1.52-m (60 in.) tine length	Tool Carrier 1.83-m (72 in.) tine length
A Height to Top of Cab	3.40 m (11 ft. 2 in.)	3.40 m (11 ft. 2 in.)	3.40 m (11 ft. 2 in.)	3.40 m (11 ft. 2 in.)	3.40 m (11 ft. 2 in.)	3.40 m (11 ft. 2 in.)	3.40 m (11 ft. 2 in.)	3.40 m (11 ft. 2 in.)
B Hood Height	2.46 m (8 ft. 1 in.)	2.46 m (8 ft. 1 in.)	2.46 m (8 ft. 1 in.)	2.46 m (8 ft. 1 in.)	2.46 m (8 ft. 1 in.)	2.46 m (8 ft. 1 in.)	2.46 m (8 ft. 1 in.)	2.46 m (8 ft. 1 in.)
C Ground Clearance	384 mm (15.1 in.)	384 mm (15.1 in.)	384 mm (15.1 in.)	384 mm (15.1 in.)	384 mm (15.1 in.)	384 mm (15.1 in.)	384 mm (15.1 in.)	384 mm (15.1 in.)
D Length From Centerline to Front Axle	1.52 m (5 ft. 0 in.)	1.52 m (5 ft. 0 in.)	1.52 m (5 ft. 0 in.)	1.52 m (5 ft. 0 in.)	1.52 m (5 ft. 0 in.)	1.52 m (5 ft. 0 in.)	1.52 m (5 ft. 0 in.)	1.52 m (5 ft. 0 in.)
E Wheelbase	3.09 m (10 ft. 1 in.)	3.09 m (10 ft. 1 in.)	3.09 m (10 ft. 1 in.)	3.09 m (10 ft. 1 in.)	3.09 m (10 ft. 1 in.)	3.09 m (10 ft. 1 in.)	3.09 m (10 ft. 1 in.)	3.09 m (10 ft. 1 in.)
F Overall Length, Forks on Ground	8.50 m (27 ft. 11 in.)	8.80 m (28 ft. 11 in.)	8.96 m (29 ft. 5 in.)	9.26 m (30 ft. 5 in.)	9.25 m (30 ft. 4 in.)	9.56 m (31 ft. 4 in.)	8.63 m (28 ft. 4 in.)	8.94 m (29 ft. 4 in.)
G Height to Hinge Pin, Fully Raised	3.96 m (13 ft. 0 in.)	3.96 m (13 ft. 0 in.)	4.32 m (14 ft. 2 in.)	4.32 m (14 ft. 2 in.)	4.57 m (15 ft. 0 in.)	4.57 m (15 ft. 0 in.)	4.00 m (13 ft. 1 in.)	4.00 m (13 ft. 1 in.)
H Reach, Fully Raised	0.81 m (32 in.)	0.81 m (32 in.)	0.95 m (3 ft. 1 in.)	0.95 m (3 ft. 1 in.)	0.96 m (3 ft. 2 in.)	0.96 m (3 ft. 2 in.)	1.05 m (3 ft. 5 in.)	1.05 m (3 ft. 5 in.)
I Fork Height, Fully Raised	3.64 m (11 ft. 11 in.)	3.64 m (11 ft. 11 in.)	4.00 m (13 ft. 2 in.)	4.00 m (13 ft. 2 in.)	4.25 m (13 ft. 11 in.)	4.25 m (13 ft. 11 in.)	3.72 m (12 ft. 2 in.)	3.72 m (12 ft. 2 in.)
J Maximum Reach, Fork Level	1.62 m (5 ft. 4 in.)	1.62 m (5 ft. 4 in.)	1.98 m (6 ft. 6 in.)	1.98 m (6 ft. 6 in.)	2.18 m (7 ft. 2 in.)	2.18 m (7 ft. 2 in.)	1.80 m (5 ft. 11 in.)	1.80 m (5 ft. 11 in.)
K Fork Height, Maximum Reach	1.69 m (5 ft. 7 in.)	1.69 m (5 ft. 7 in.)	1.69 m (5 ft. 7 in.)	1.69 m (5 ft. 7 in.)	1.69 m (5 ft. 7 in.)	1.69 m (5 ft. 7 in.)	1.80 m (5 ft. 11 in.)	1.80 m (5 ft. 11 in.)
L Reach, Ground Level	1.06 m (3 ft. 6 in.)	1.06 m (3 ft. 6 in.)	1.49 m (4 ft. 11 in.)	1.49 m (4 ft. 11 in.)	1.73 m (5 ft. 8 in.)	1.73 m (5 ft. 8 in.)	1.21 m (4 ft. 0 in.)	1.21 m (4 ft. 0 in.)
M Depth Below Ground	77 mm (3 in.)	77 mm (3 in.)	181 mm (7 in.)	181 mm (7 in.)	173 mm (7 in.)	173 mm (7 in.)	173 mm (7 in.)	173 mm (7 in.)
N Tine Length	1.52 m (60 in.)	1.83 m (72 in.)	1.52 m (60 in.)	1.83 m (72 in.)	1.52 m (60 in.)	1.83 m (72 in.)	1.52 m (60 in.)	1.83 m (72 in.)
O Load Position, 50% Tine Length	0.76 m (30 in.)	0.91 m (3 ft. 0 in.)	0.76 m (30 in.)	0.91 m (3 ft. 0 in.)	0.76 m (30 in.)	0.91 m (3 ft. 0 in.)	0.76 m (30 in.)	0.91 m (3 ft. 0 in.)

Dimensions and Specifications With Hi-Vis Coupler and Hook-On Construction Forks (continued)

624 P-TIER Z-BAR / HIGH-LIFT / HIGH-LIFT PLUS / TOOL CARRIER

	Z-Bar	Z-Bar	High-Lift	High-Lift	High-Lift Plus	High-Lift Plus	Tool Carrier	Tool Carrier
Specifications With Forks	1.52-m (60 in.)	1.83-m (72 in.)	1.52-m (60 in.)	1.83-m (72 in.)	1.52-m (60 in.)	1.83-m (72 in.)	1.52-m (60 in.)	1.83-m (72 in.)
<i>(illustrations on previous page)</i>	tine length	tine length	tine length	tine length	tine length	tine length	tine length	tine length
Tipping Load, Straight, No Tire Deflection	8808 kg (19,418 lb.)	8328 kg (18,360 lb.)	7736 kg (17,054 lb.)	7342 kg (16,186 lb.)	7296 kg (16,085 lb.)	6937 kg (15,293 lb.)	8505 kg (18,750 lb.)	8061 kg (17,771 lb.)
Tipping Load, Straight, With Tire Deflection	8553 kg (18,856 lb.)	8091 kg (17,838 lb.)	7515 kg (16,568 lb.)	7134 kg (15,728 lb.)	7104 kg (15,662 lb.)	6759 kg (14,901 lb.)	8283 kg (18,261 lb.)	7851 kg (17,308 lb.)
Tipping Load, 40-deg. Full Turn, No Tire Deflection	7602 kg (16,760 lb.)	7178 kg (15,825 lb.)	6639 kg (14,636 lb.)	6291 kg (13,869 lb.)	6232 kg (13,739 lb.)	5915 kg (13,041 lb.)	7350 kg (16,204 lb.)	6957 kg (15,338 lb.)
Tipping Load, 40-deg. Full Turn, With Tire Deflection	7251 kg (15,986 lb.)	6858 kg (15,119 lb.)	6330 kg (13,955 lb.)	6006 kg (13,241 lb.)	5946 kg (13,109 lb.)	5643 kg (12,441 lb.)	7023 kg (15,483 lb.)	6648 kg (14,656 lb.)
Rated Operating Load, 50% Full-Turn Tipping Load, With Tire Deflection (conforms to ISO 14397-1 and SAE J1197)*	3626 kg (7,993 lb.)	3429 kg (7,560 lb.)	3165 kg (6,978 lb.)	3003 kg (6,620 lb.)	2973 kg (6,554 lb.)	2822 kg (6,220 lb.)	3512 kg (7,742 lb.)	3324 kg (7,328 lb.)
Rated Operating Load, Rough Terrain, 60% Full-Turn Tipping Load, With Tire Deflection (conforms to EN474-3)*	4351 kg (9,591 lb.)	4115 kg (9,072 lb.)	3798 kg (8,373 lb.)	3604 kg (7,945 lb.)	3568 kg (7,865 lb.)	3386 kg (7,464 lb.)	4214 kg (9,290 lb.)	3989 kg (8,794 lb.)
Rated Operating Load, Firm and Level Ground, 80% Full-Turn Tipping Load, With Tire Deflection (conforms to EN474-3)*	5801 kg (12,789 lb.)	5486 kg (12,095 lb.)	5064 kg (11,164 lb.)	4805 kg (10,593 lb.)	4757 kg (10,487 lb.)	4514 kg (9,953 lb.)	5618 kg (12,386 lb.)	5318 kg (11,725 lb.)
Operating Weight	16 005 kg (35,286 lb.)	16 066 kg (35,420 lb.)	16 213 kg (35,744 lb.)	16 272 kg (35,875 lb.)	16 454 kg (36,274 lb.)	16 516 kg (36,412 lb.)	15 721 kg (34,659 lb.)	15 807 kg (34,849 lb.)

Loader operating information is based on machine with identified linkage and standard equipment, PowerTech PVS 6068 (EPA Final Tier 4/EU Stage V) engine, ROPS cab, rear cast bumper/counterweight, transmission side-frame guards, bottom guards, standard tires, full fuel tank, and 79-kg (175 lb.) operator. This information is affected by changes in tires, ballast, and different attachments.

*Rated operating capacity based on Deere attachments only.

Adjustments to Operating Weights and Tipping Loads With Buckets

Adjustments to operating weights, tipping loads, and tires are based on Z-Bar machine with pin-on 2.7-m³ (3.5 cu. yd.) general-purpose bucket with bolt-on cutting edge, ROPS cab, rear cast bumper/counterweight, transmission side-frame guards, bottom guards, standard tires, full fuel tank, and 79-kg (175 lb.) operator*

Add (+) or deduct (–) kg (lb.) as indicated for loaders with 3-piece rims	Tipping Load,		Tipping Load,		Tread Width	Width Over Tires	Vertical Height
	Operating Weight	Straight	40-deg. Full Turn				
Michelin 20.5 R 25, 1 Star L-3 XHA2	0 kg (0 lb.)	0 kg (0 lb.)	0 kg (0 lb.)	0 mm (0 in.)	0 mm (0 in.)	0 mm (0 in.)	0 mm (0 in.)
Bridgestone 20.5 R 25, 1 Star L-3 VJT	+4 kg (+9 lb.)	+3 kg (+6 lb.)	+3 kg (+6 lb.)	0 mm (0 in.)	+3 mm (+0.1 in.)	–41 mm (–1.6 in.)	
Titan 20.5 R 25, 1 Star L-3 STL3	+8 kg (+19 lb.)	+6 kg (+13 lb.)	+5 kg (+13 lb.)	0 mm (0 in.)	–6 mm (–0.2 in.)	–7 mm (–0.3 in.)	
Michelin 20.5 R 25, 1 Star L-2 XTLA	–152 kg (–335 lb.)	–110 kg (–242 lb.)	–97 kg (–214 lb.)	0 mm (0 in.)	+5 mm (+0.2 in.)	–10 mm (–0.4 in.)	
Bridgestone 20.5 R 25, 1 Star L-2 VUT	–68 kg (–149 lb.)	–49 kg (–108 lb.)	–43 kg (–95 lb.)	0 mm (0 in.)	+4 mm (+0.2 in.)	–10 mm (–0.4 in.)	
Titan 20.5 R 25, 1 Star L-2 TGD2	–116 kg (–255 lb.)	–84 kg (–184 lb.)	–74 kg (–162 lb.)	0 mm (0 in.)	–6 mm (–0.2 in.)	–10 mm (–0.4 in.)	
Firestone 20.5-25, 16 PR L-3 SRG Bias	–276 kg (–608 lb.)	–200 kg (–440 lb.)	–176 kg (–388 lb.)	0 mm (0 in.)	+9 mm (+0.4 in.)	+6 mm (+0.2 in.)	
Titan 20.5-25, 16 PR L-2 Bias	–232 kg (–511 lb.)	+168 kg (+370 lb.)	–148 kg (–326 lb.)	0 mm (0 in.)	+9 mm (+0.4 in.)	–1 mm (0 in.)	
Firestone 20.5-25, 16 PR L-2 SGG Bias	–280 kg (–617 lb.)	–203 kg (–446 lb.)	–178 kg (–393 lb.)	0 mm (0 in.)	+6 mm (+0.2 in.)	+2 mm (+0.1 in.)	
Michelin 600/65 R 25, 1 Star L-3T XLD [§]	+16 kg (+36 lb.)	+12 kg (+26 lb.)	+10 kg (+23 lb.)	0 mm (0 in.)	+95 mm (+3.7 in.)	–31 mm (–1.2 in.)	
Michelin 20.5 R 25, L2T XSNO-PLUS	–96 kg (–212 lb.)	–69 kg (–153 lb.)	–61 kg (–135 lb.)	0 mm (0 in.)	+7 mm (+0.3 in.)	–33 mm (–1.3 in.)	
Michelin 620/75R26 MegaXbib [¶]	–207 kg (–457 lb.)	–150 kg (–331 lb.)	–132 kg (–291 lb.)	+86 mm (+3.4 in.)	+147 mm (+5.8 in.)	+23 mm (+0.9 in.)	
Michelin 750/65R26 MegaXbib [¶]	+37 kg (+81 lb.)	+27 kg (+58 lb.)	+23 kg (+51 lb.)	+222 mm (+8.7 in.)	+422 mm (+16.6 in.)	+36 mm (+1.4 in.)	
CaCl ₂ in 20.5-25, L-3 Rear Tires, 75% Fill	+825 kg (+1,820 lb.)	+1193 kg (+2,631 lb.)	+1051 kg (+2,318 lb.)	N/A	N/A	N/A	

*May change based on vehicle configuration, weight, or tire-pressure adjustments.

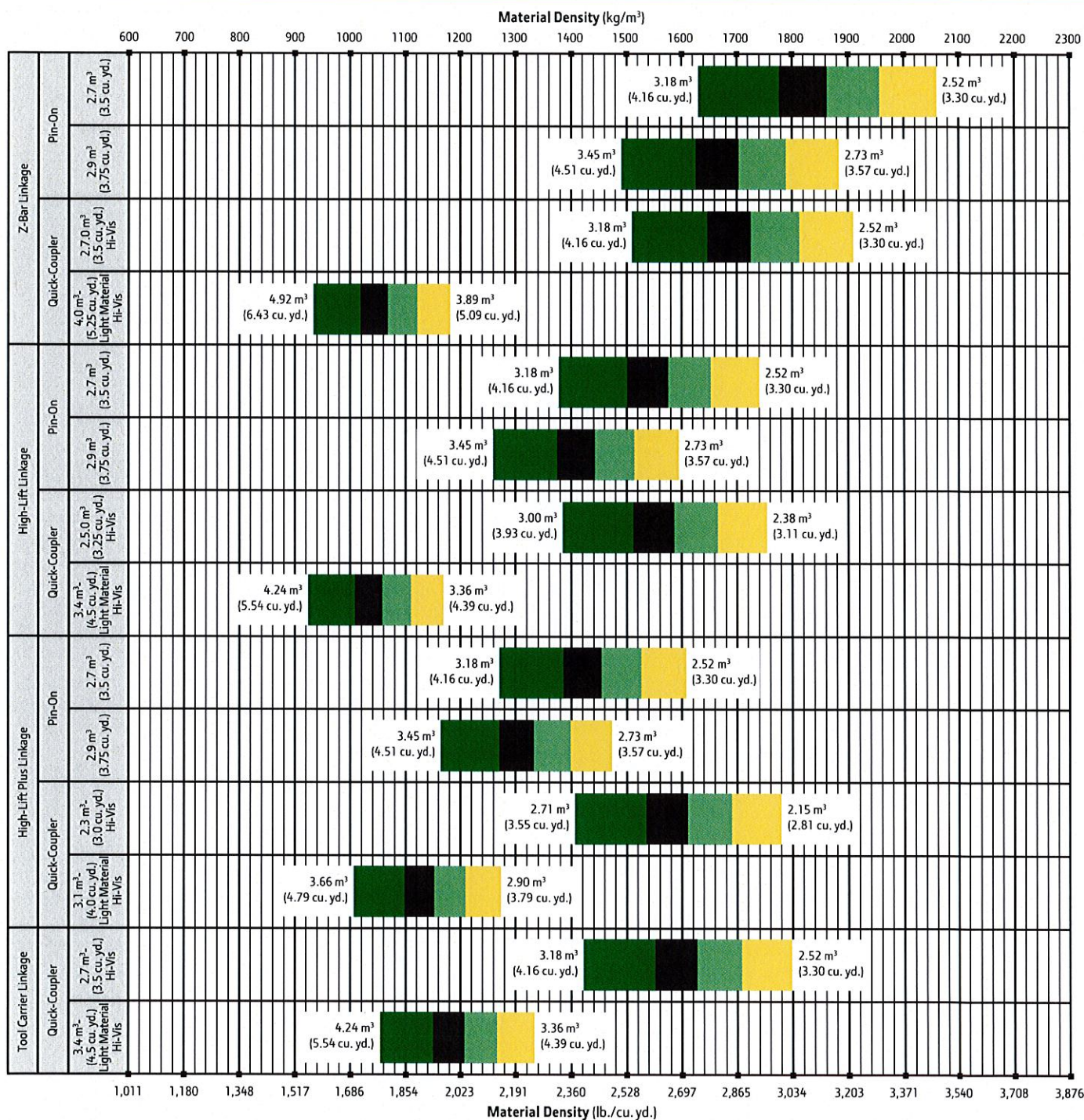
[§]CaCl₂ not recommended.

[¶]Equipped with 1-piece rims.

[¶]Requires 8-deg. rear axle stops.

Bucket Selection Guides

624 P-TIER Z-BAR / HIGH-LIFT / HIGH-LIFT PLUS / TOOL CARRIER



LOOSE MATERIALS			LOOSE MATERIALS		
	kg/m³	lb./cu. yd.		kg/m³	lb./cu. yd.
Chips, pulpwood	288	486	Limestone, coarse, sized	1570	2,646
Cinders (coal, ashes, clinkers)	673	1,134	Limestone, mixed sizes	1682	2,835
Clay and gravel, dry	1602	2,700	Limestone, pulverized or crushed	1362	2,295
Clay, compact, solid	1746	2,943	Sand, damp	2083	3,510
Clay, dry in lump loose	1009	1,701	Sand, dry	1762	2,970
Clay, excavated in water	1282	2,160	Sand, voids, full of water	2083	3,510
Coal, anthracite, broken, loose	865	1,458	Sandstone, quarried	1314	2,214
Coal, bituminous, moderately wet	801	1,350	Shale, broken crushed	1362	2,295
Earth, common loam, dry	1218	2,052	Slag, furnace granulated	1955	3,294
Earth, mud, packed	1843	3,105	Stone or gravel, 37.5 to 87.5-mm (1.5 to 3.5 in.) size	1442	2,430
Granite, broken	1538	2,592	Stone or gravel, 18.75-mm (0.75 in.) size	1602	2,700
Gypsum	2275	3,834			

Bucket Fill Factors



Additional equipment

Key: ● Standard ▲ Optional or special See your John Deere dealer for further information.

444 P	524 P	544 P	624 P	644 P	724 P	Engine
●	●	●	●	●	●	Wet-sleeve cylinder liners
●	●	●	●	●	●	Programmable auto-idle and auto shutdown
●	●	●	●	●	●	Selected idle adjustment from 900–1,250 rpm
●	●	●	●	●	●	Starter excessive-cranking protection
●	●	●	●	●	●	Automatic engine cool-down timer
●	●	●	●	●	●	Automatic derating for exceeded system temperatures
●	●	●	●	●	●	Serpentine drive belt for automatic tensioner
●	●	●	●	●	●	Electrical fuel-priming pump
●	●	●	●	●	●	Dual-stage fuel filter and water separator
●	●	●	●	●	●	500-hour vertical spin-on oil filter
▲	▲	▲	▲	▲	▲	Engine-compartment light
▲	▲	▲	▲	▲	▲	Chrome exhaust stack
●	●	●	●	●	●	Automatic glow plugs for cold start
					▲	Automatic ether starting aid (recommended for cold starts below –12 deg. C [10 deg. F])
▲	▲	▲	▲	▲	▲	Engine-block heater (recommended for cold starts below –23 deg. C [–10 deg. F])
▲	▲	▲	▲	▲	▲	Centrifugal engine air pre-cleaner
▲	▲	▲	▲	▲	▲	Throttle lock
						Powertrain
●	●	●	●	●	●	Clutch cutoff with 4 operator settings: Automatic, level ground, small slope, or steep slope
●	●	●	●	●	●	Programmable maximum high gear
●	●	●	●	●	●	Clutch calibration engaged from monitor
●	●	●	●	●	●	2,000-hour vertical spin-on transmission filter
●	●	●	●	●	●	Transmission fill tube and sight gauge
●	●	●	●	●	●	Transmission diagnostic ports
●				▲	▲	4-speed transmission with non-lockup torque converter
	●	▲	▲			5-speed transmission with non-lockup torque converter
		●	●	●	●	5-speed transmission with lockup torque converter
●	●	●	●	●	●	Front locking differential
▲	▲	▲	▲	▲	▲	Rear locking differential
●	●	●	●	●	●	Brake retractors and adjusters
▲	▲	▲	▲	▲	▲	Automatic differential lock
●	●	●	●	●	●	Axle oil temperature sensing
▲	▲	▲	▲	▲	▲	Wheel-spin control

444 P	524 P	544 P	624 P	644 P	724 P	Quad-Cool™ Cooling System
●	●	●	●	●	●	Heavy-duty, trash-resistant radiator and high-ambient cooling package
●	●	●	●	●	●	2-side access to all coolers
●	●	●	●	●	●	Isolated from engine compartment
●	●	●	●	●	●	Engine radiator
●	●	●	●	●	●	Engine oil cooler
●	●	●	●	●	●	Hydraulic oil cooler (oil to air)
●	●	●	●	●	●	Transmission oil cooler (oil to air)
●	●	●	●	●	●	Charge air cooler (air to air)
●	●	●	●	●	●	Fuel cooler
●	●	●	●	●	●	Coolant recovery tank
●	●	●	●	●	●	Antifreeze, –37 deg. C (–34 deg. F)
●	●	●	●	●	●	Cool-on-demand, hydraulically driven, swing-out fan
●	●	●	●	●	●	Enclosed fan safety guard
▲	▲	▲	▲	▲	▲	Automatic reversing fan drive
▲	▲	▲	●	●	●	Axle and service-brake coolers
						Hydraulics
●	●	●	●	●	●	Electrohydraulic (EH) controls with soft stops and adjustable settings
●	●	●	●	●	●	In-cab adjustable automatic return-to-dig bucket positioner
●	●	●	●	●	●	In-cab adjustable automatic boom-height kickout/return to carry
●	●	●	●	●	●	Reservoir with sight gauge and fill strainer
●	●	●	●	●	●	Hydraulic diagnostic ports
●	●	●	●	●	●	4,000-hour in-tank filter
●	●	●	●	●	●	2 function — joystick with F-N-R
▲	▲	▲	▲	▲	▲	2 function — 2-lever fingertip controls and steering column F-N-R
▲	▲	▲	▲	▲	▲	3 function — joystick with F-N-R and integrated 3rd-function roller
▲	▲	▲	▲	▲	▲	3 function — 3-lever fingertip controls and steering column F-N-R
▲	▲	▲	▲	▲	▲	4 function — joystick with F-N-R and integrated 3rd/4th-function rollers
●	●	●	●	●	●	Programmable multifunction buttons (2)
●	●	●	●	●	●	Adjustable and continuous hydraulic-flow settings
●	●	●	●	●	●	Programmable attachment settings
▲	▲	▲	▲	▲	●	Ride control, automatic with monitor-adjustable speed settings
▲	▲	▲	▲	▲	▲	Hydraulic control system for quick-coupler locking pins
▲	▲	▲	▲	▲	▲	Hydrau™ XR cold-temperature hydraulic fluid recommended below –25 deg. C (–13 deg. F)

While general information, pictures, and descriptions are provided, some illustrations and text may include product options and accessories NOT AVAILABLE in all regions, and in some countries products and accessories may require modifications or additions to ensure compliance with the local regulations of those countries.

Net engine power is with standard equipment including air cleaner, exhaust system, alternator, and cooling fan at test conditions per ISO 9249. No derating is required up to 3050-m (10,000 ft.) altitude. Specifications and design subject to change without notice. Specifications with the exception of bucket capacity are in accordance with all applicable ISO standards. Except where otherwise noted, these specifications are based on units with applicable linkage and standard equipment, ROPS cab, rear cast bumper/counterweight, transmission side-frame guards, bottom guards, standard tires, full fuel tank, and 79-kg (175 lb.) operator.

Additional equipment (cont.)

Key: ● Standard ▲ Optional or special

See your John Deere dealer for further information.

444 P	524 P	544 P	624 P	644 P	724 P	Steering Systems
●	●	●	●	●	●	Conventional steering wheel with spinner knob
				▲	▲	Joystick steering (including conventional steering column) with gearshift, F-N-R, and horn
▲	▲	▲	▲	▲	▲	Secondary steering
Electrical						
●	●	●	●	●	●	Solid-state electrical power-distribution system
●	●	●	●	●	●	Lockable master electrical-disconnect switch
●	●	●	●	●	●	Battery-terminal safety covers
●	●	●	●	●	●	By-pass start safety cover at starter
●	●	●	●	●	●	Remote jump-start access in battery box
●	●	●	●	●	●	Pre-wired for beacon/strobe light
●	●	●	●	●	●	Lights: Halogen driving lights with guards (2) / Front (4), rear cab (2), and rear grille (2) work lights / LED front turn signals and flashers / LED stop- and taillights
▲	▲	▲	▲	▲	▲	Premium LED light package (all exterior lights are heavy-duty LED)
●	●	●	●	●	●	Programmable courtesy lights
●	●	●	●	●	●	Horn, electric
●	●	●	●	●	●	Reverse warning alarm
●	●	●	●	●	●	Multifunction/multi-language 178-mm (7 in.) LCD color monitor includes: Digital instruments — Analog display (hydraulic oil temperature, engine coolant temperature, transmission oil temperature, and engine oil pressure) / Digital display (engine rpm, transmission gear/direction indicator, hour meter, fuel level, diesel exhaust fluid (DEF) level, speedometer, odometer, and average fuel consumption)
▲	▲	▲	▲	▲	▲	Multifunction/multi-language 127-mm (5 in.) LCD color monitor includes: Digital instruments — Analog display (hydraulic oil temperature, engine coolant temperature, transmission oil temperature, and engine oil pressure) / Digital display (engine rpm, transmission gear/direction indicator, hour meter, fuel level, DEF level, speedometer, odometer, and average fuel consumption)
▲	▲	▲	▲	●	●	Integrated cycle counter with 5 categories
●	●	●	●	●	●	Indicator lights: Standard and selected options / Amber caution and red stop

444 P	524 P	544 P	624 P	644 P	724 P	Electrical (continued)
●	●	●	●	●	●	Operator-warning messages
●	●	●	●	●	●	Built-in diagnostics: Diagnostic-code details / Sensor values / Calibrations / Individual circuit tester
▲	▲	▲	▲	▲	▲	Electrical corrosion-prevention package
●	●	●	●	●	●	Standard AM/FM/Weather-Band (WB) radio with remote auxiliary port
▲	▲	▲	▲	▲	▲	Premium AM/FM/WB radio with Bluetooth®, remote auxiliary port, and remote USB port (premium cab only)
●	●	●	●	●	●	24- to 12-volt, 8-amp converter and cab power ports (3)
▲	▲	▲	▲	▲	▲	24- to 12-volt, 15- or 30-amp converter and cab power ports (3)
Operator's Station						
●	●	●	●	●	●	Standard cab with air conditioning/heater (ROPS/FOPS Level 1, isolation mounted)
▲	▲	▲	▲	▲	▲	Premium cab with air conditioning/heater (ROPS/FOPS Level 1, isolation mounted)
▲	▲	▲	▲	▲	▲	Automatic temperature control (premium cab only)
●	●	●	●	●	●	Rear window defrost vent
●	●	●	●	●	●	Keyless start with multiple security modes
●	●	●	●	●	●	Sealed-switch module with function indicators
●	●	●	●	●	●	Seat with backrest extension, deep foam, fabric cover, and adjustable air suspension
▲	▲	▲	▲	▲	▲	Premium seat with high-wide back-and-headrest extension, heated and ventilated, leather/fabric cover, and adjustable heavy-duty air suspension
●	●	●	●	●	●	Hydraulic controls integrated to seat
●	●	●	●	●	●	High-visibility, bright-orange seat belt, 76 mm (3 in.), with retractor
▲	▲	▲	▲	▲	▲	Seat-belt minder monitoring with JDLink™ and seat-belt indicator beacon
●	●	●	●	●	●	Cup holder and cup/Thermos® holder with retaining strap
●	●	●	●	●	●	Lunch-box/cooler holder with tie-down brackets
●	●	●	●	●	●	Coat hook
●	●	●	●	●	●	LED dome and reading light
●	●	●	●	●	●	Rubber floor mat
●	●	●	●	●	●	Dual-tilt steering column
●	●	●	●	●	●	Operator's manual storage compartment

Operator's Station continued on next page

While general information, pictures, and descriptions are provided, some illustrations and text may include product options and accessories NOT AVAILABLE in all regions, and in some countries products and accessories may require modifications or additions to ensure compliance with the local regulations of those countries.

Net engine power is with standard equipment including air cleaner, exhaust system, alternator, and cooling fan at test conditions per ISO 9249. No derating is required up to 3050-m (10,000 ft.) altitude. Specifications and design subject to change without notice. Specifications with the exception of bucket capacity are in accordance with all applicable ISO standards. Except where otherwise noted, these specifications are based on units with applicable linkage and standard equipment, ROPS cab, rear cast bumper/counterweight, transmission side-frame guards, bottom guards, standard tires, full fuel tank, and 79-kg (175 lb.) operator.

Additional equipment (cont.)

Key: ● Standard ▲ Optional or special

See your John Deere dealer for further information.

444 P	524 P	544 P	624 P	644 P	724 P	Operator's Station (continued)
●	●	●	●	●	●	Outside (2) and inside (1) rearview mirrors
▲	▲	▲	▲	▲	▲	Heated outside mirrors with convex lens
▲	▲	▲	▲	▲	▲	In-cab adjustable heated outside mirrors with convex lens (premium cab only)
●	●	●	●	●	●	Left-side operator-station access
●	●	●	●	●	●	Slip-resistant steps and ergonomic handholds
●	●	●	●	●	●	Pull-down front sun visor
●	●	●	●	●	●	Front and rear intermittent windshield wipers and washers
▲	▲	▲	▲	▲	▲	Powered cab air pre-cleaner
▲	▲	▲	▲	▲	▲	Beacon bracket only
▲	▲	▲	▲	▲	▲	Beacon bracket with strobe beacon
●	●	●	●	●	●	Rearview camera
▲	▲	▲	▲	▲	▲	Rearview camera with radar object-detection system
▲	▲	▲	▲	▲	▲	Dedicated 178-mm (7 in.) rear camera display
●	●	●	●	●	●	Payload scale ready
▲	▲	▲	▲	▲	▲	Fire extinguisher
Loader Linkage						
●	●	●	●	●	●	Z-Bar loader linkage (parallel lift)
▲	▲	▲	▲	▲	▲	High-Lift Z-Bar loader linkage (parallel lift)
	▲	▲	▲			High-Lift Plus Z-Bar loader linkage (parallel lift)
	▲		▲			Tool Carrier linkage for visibility (parallel lift)
Buckets and Attachments						
▲	▲	▲	▲	▲	▲	Full line of Deere pin-on buckets, coupler buckets, and forks
▲	▲	▲	▲	▲	▲	John Deere hydraulic coupler that accepts JRB-pattern attachments
▲	▲	▲	▲	▲	▲	Hi-Vis hydraulic coupler that accepts Euro-pattern attachments (ISO)
Overall Vehicle						
●	●	●	●	●	●	JDLink wireless communication system (available in specific countries; see your dealer for details)
●	●	●	●	●	●	NeverGrease™ rear-axle oscillation
●	●	●	●	●	●	Front and rear tie-downs
●	●	●	●	●	●	Rear cast bumper/counterweight with rear hitch and locking pin

444 P	524 P	544 P	624 P	644 P	724 P	Overall Vehicle (continued)
●	●	●	●	●	●	Articulation locking bar
●	●	●	●	●	●	Loader boom service locking bar
●	●	●	●	●	●	40-deg. steering articulation to each side with rubber-cushion stops on frame
●	●	●	●	●	●	Vandal protection with lockable engine enclosures, right counterweight storage, and filler access for radiator/fuel/DEF/hydraulic transmission
●	●	●	●	●	●	Left-side service steps and handholds
▲	▲	▲	▲	▲	▲	Right-side service steps and handrails
▲	▲	▲	▲	▲	▲	Left-side close-mounted steps
●	●	●	●	●	●	Storage compartment
●	●	●	●	●	●	Fuel-tank fill strainer
●	●	●	●	●	●	Heavy-duty fuel-tank guard
●	●	●	●	●	●	Ground-level fuel and DEF fill
●	●	●	●	●	●	Same-side ground-level daily servicing
▲	●	●	●			17.5R25 tires on 3-piece rims
				●	●	20.5R25 tires on 3-piece rims
				▲	▲	23.5R25 tires on 3-piece rims
				▲	▲	23.5R25 tires on 5-piece rims
	▲	▲	▲			Tire-pressure monitoring system
				▲	▲	Ag material-handling package
▲	▲	▲	▲	●	●	Waste handler (Z-Bar and High-Lift)
						Environmental drains and sample ports for engine, transmission, hydraulic oils, and engine coolant
				▲	▲	Quick fluid service (engine, transmission, hydraulic oils, and engine coolant)
				▲	▲	Fast-fuel system
●	●	●	●	●	●	Fenders, front narrow
▲	▲	▲	▲	▲	▲	Fenders, front full width
▲	▲	▲	▲	▲	▲	Fenders, front and rear full width
▲	▲	▲	▲	▲	▲	Fenders, front and rear full width with mud flaps
▲	▲	▲	▲	▲	▲	Less wheels and tires with axle stops
▲	▲	▲	▲	▲	▲	Rims less tires
▲	▲	▲	▲	▲	▲	Transmission side-frame and bottom guards
			▲	▲	▲	Special guarding for waste applications
▲	▲	▲	▲	▲	▲	Lift eyes
▲	▲	▲	▲	▲	▲	License-plate bracket and light

While general information, pictures, and descriptions are provided, some illustrations and text may include product options and accessories NOT AVAILABLE in all regions, and in some countries products and accessories may require modifications or additions to ensure compliance with the local regulations of those countries.

Net engine power is with standard equipment including air cleaner, exhaust system, alternator, and cooling fan at test conditions per ISO 9249. No derating is required up to 3050-m (10,000 ft.) altitude. Specifications and design subject to change without notice. Specifications with the exception of bucket capacity are in accordance with all applicable ISO standards. Except where otherwise noted, these specifications are based on units with applicable linkage and standard equipment, ROPS cab, rear cast bumper/counterweight, transmission side-frame guards, bottom guards, standard tires, full fuel tank, and 79-kg (175 lb.) operator.



JohnDeere.com

STANDARD WARRANTY FOR NEW JOHN DEERE CONSTRUCTION, COMPACT CONSTRUCTION (CCE) FORESTRY, AND UTILITY PRODUCTS – US & Canada

- **Construction & Forestry Products:** 12 months/unlimited hours (whichever occurs first) Full Machine Standard Warranty
- **Compact Construction Equipment (CCE) Products:** 24 months or 2000 hours (whichever occurs first) Full Machine Standard Warranty
- **C&E Series Pull-Type Scrapers:** 6 months Full Machine Standard Warranty
- **DC & DE Pull-Type Scrapers:** 12 months Full Machine Standard Warranty
- **Scraper Tractors:** 24 Months or 2000 Hours (whichever occurs first) Full Machine Standard Warranty
- **Forestry Attachments:** 12 Months or 2000 Hours (whichever occurs first) Full Machine Standard Warranty

The "Standard Warranty" is part of the warranty protection package available from John Deere Construction & Forestry Company (John Deere Limited in Canada) ("John Deere") to purchasers of new John Deere products ("product"):

STANDARD Warranty is John Deere's standard new product warranty, described in this document, provided at no additional charge to the purchaser.

EXTENDED Warranty is a separate repair contract made available by John Deere for purchasers who wish to complement their Standard Warranty coverage. Complete Extended Warranty details, including coverage options and limitations, are set forth in the Application for Extended Warranty, which is available from authorized John Deere dealers.

STRUCTURAL Warranty applies to certain structural components as listed below and as described in this document.

FACTORY-INSTALLED UNDERCARRIAGE Warranty applies to certain undercarriage components as listed below and as described in this document.

A. STANDARD WARRANTY - GENERAL PROVISIONS

John Deere will repair or replace, at its option, any parts (except those specified below) of a new John Deere product that, as delivered to the original retail purchaser(s), are defective in material or workmanship. Performance of this warranty will be free of charge for parts and labor, except as otherwise stated below. Standard Warranty applies only to purchases from John Deere and authorized John Deere dealers and, except as otherwise provided in the next sentence and section L below, is extended only to the original retail purchaser of the product. Remaining Standard Warranty applicable to a used John Deere product is transferred to a subsequent purchaser of the product only if the subsequent purchaser requests a transfer from an authorized John Deere dealer before the product's Standard Warranty expires. Coverage begins on the date of delivery of the product to the original retail purchaser. For purposes of this warranty, a product that has been rented, used for demonstration purposes for 150 or more hours, or otherwise used prior to its original retail purchase has been "used" for the total duration of such use. Warranty statements required by law covering engine emissions-related parts and components are found on a separate written warranty certificate provided to the purchaser at the time of the original retail purchase.

B. WHAT IS COVERED BY STANDARD WARRANTY -

All parts of a new John Deere product (except those noted in Sections D and E below) are covered during the Standard Warranty period set out above.

C. EXCLUSIVE REMEDY -

The repair or replacement of covered parts or components that are defective, as provided in Sections A, B, D.2 and D.3 herein, shall be the purchaser's exclusive remedy for any defect in the product. However, if after repeated attempts such repair or replacement fails to correct the performance problem caused by the defect, the purchaser's sole remedy shall be a refund of the amount paid for the product (in exchange for a return of the product), excluding any transportation charges, license fees, taxes and insurance premiums, and less a reasonable allowance for use of the product prior to its return. In no event will the dealer, John Deere or any company affiliated with John Deere be liable for any incidental or consequential damages, including but not limited to loss of profits, rental of substitute equipment or other commercial loss. Correction of defects in the manner provided above shall constitute fulfillment of all liabilities of the Dealer, John Deere, or any company affiliated with John Deere to the purchaser or any other person, whether based upon contract, tort, strict liability, or otherwise. This limitation does not apply to claims for personal injury.

D. ITEMS COVERED SEPARATELY -

1. Standard Warranty does not apply to batteries, radios, tires, cameras, or to Cummins, MTU or Detroit Diesel Engines installed in John Deere products, which are covered by separate written warranties.
2. Factory-Installed Undercarriage Warranty covers all non-rubberized factory-installed undercarriage wear components for 3 years or 4,000 hours from the date of delivery to the original retail purchaser, whichever occurs first (unless terminated earlier under Section F, below). For purposes of this warranty, a product that has been rented, used for demonstration purposes for 150 or more hours, or otherwise used prior to its original retail purchase has been "used" for the total duration of such use. In addition to the items listed in section E below, Factory-Installed Undercarriage Warranty does not cover: failures due to wear, machine application, maintenance practices, or improper machine configuration; removal and installation labor; transportation or hauling costs; unapproved parts; non-wear items; and rubberized undercarriage components such as rubber tracks. Warranty claims will be pro-rated based upon wear of the failed component and whether track shoe width is approved by John Deere. Factory-Installed Undercarriage Warranty does not apply to Scraper Tractors.
3. StructurALL Warranty for new John Deere Products (except Compact Excavators & Loaders, Skid-Steer Loaders, Compact Track Loaders, Scraper Tractors, Pull-Type Scrapers, and Forestry Attachments, which are not eligible for StructurALL Warranty) begins at the date of delivery to the original retail purchaser and ends (unless terminated earlier under Section F, below) after three (3) years, or 10,000 hours (whichever occurs first). For purposes of this warranty, a product that has been rented, used for demonstration purposes for 150 or more hours, or otherwise used prior to its original retail purchase has been "used" for the total duration of such use. **StructurALL Warranty applies only to the following structural components listed below as installed on the product at the time of original manufacture.** If a particular component is not listed below it is not covered by StructurALL Warranty.

Arm; Articulation Joint (incl. pins & bushings); Bin Frame; Boom; Carbody; C-Frame*; Circle Frame; Coupler (John Deere built ONLY); Dipperstick; Draft Frame; Engine Frame; Equipment Frame; Grapple Arch and Grapple Boom; Loader Arm; Loader Frame; Mainframe; Moldboard Lift Arm; NeverGrease™ Pin Joints [Includes steering pin and bushing joints (standard equipment), roller elements (roller bearings) in bucket to boom joints and sliding elements (bushing) for boom and linkage joints (optional equipment)]; Rollover Protection Structure (ROPS); Side Frame; Swing Frame; Track Frame; Undercarriage Frame; X-Frame; Z-bar loader linkage (including bell crank and bucket driver link); Specialty booms and arms marketed as "heavy duty" by John Deere.

Items Covered by StructurALL for Cut-to-Length Forestry Machines: Front frame (welded assembly); Rear frame (welded assembly); Crane king post with basement; Middle joint frame; Cabin swing frame; Main Boom

StructurALL Warranty does not apply to:

1. Any product used primarily in extreme duty or severe duty applications such as but not limited to: demolition and wrecking, chemical plant (including fertilizer plants), salt mines, steel mill, land fill and transfer stations, scrap handling, scarifying and other applications that are similarly destructive or similarly heavy duty except specialty booms and arms as stated in Section D.3 above.
2. C-Frames on Crawlers equipped with root rakes or used in forestry applications unless equipped with an "extreme duty" reinforcement package.
3. Cut-to-Length Forestry Heads and Slash Bundler Units.
4. Crawlers equipped with optional side booms.
5. Cut-to-Length Forestry, Excavator, and Log Loader swing bearings.
6. Motor Graders equipped with front- or rear-mounted snow wings.

E. ITEMS NOT COVERED -

John Deere is NOT responsible for the following:

1. Freight
2. Adjustments to compensate for wear, for periodic maintenance or adjustments that result from normal wear and tear.
3. Damage caused by unapproved adjustments (electronic or mechanical) to machine or machine components outside of published specifications including but not limited to engine, hydraulic components and relief valves.
4. Program updates, calibrations, and pressure adjustments.
5. Additional Labor Time - Above Dealer Labor Rate
6. Additional Cleaning - Above Dealer Labor Rate
7. Rental Fees
8. Depreciation or damage caused by normal wear or application, lack of reasonable and proper maintenance, failure to follow operating instructions, misuse, lack of proper protection during storage, vandalism, negligence, collision, or other accidents.
9. Premiums charged for Overtime Labor
10. Transportation to and from the dealership.
11. Travel time, mileage, or service calls by the dealer.
12. Non-John Deere components or modifications, Rotobec grapples, and attachments installed aftermarket.
13. Shop supplies and maintenance items such as, but not limited to: filters, fuels, oil, hydraulic fluid, lubricants, coolants, conditioners, shop towels, cleaners and degreasers.
14. Torn, cut, or worn hoses.
15. Wear items, such as, but not limited to: body liner, belts, blades, bulbs, lubricated joints (including pins and bushings), dry brakes, brake linings, dry clutch linings, saw blades, chains, skidder grapple shocks, color marking nozzles, and articulation bumpers.
16. Items such as cutting-edge parts, delimbing knives, bucket teeth and rubber track are not warranted for depreciation or damage caused by normal wear, lack of proper maintenance, misuse, failure to follow operating instructions, the elements or accident.
17. Any defect in a non-covered component, or damage to or failure of a covered component caused by a defect in a non-covered component.
18. Secondary damage which occurs from continued operation of a product after recognition of the occurrence of a failure.
19. Parts supplied by or repairs, maintenance or modifications performed by someone other than an authorized John Deere dealer, including any damage caused by such use of parts, repairs, maintenance, or modifications not performed by an authorized John Deere dealer.
20. Topping off fluids when fluid levels fall in the range between low and full
21. Parts/Kits not ordered on machine and installed aftermarket. These parts will be covered by any applicable parts warranty.
22. Attachments installed aftermarket – i.e., Winch not installed at factory.
23. Custom options installed outside the factory – i.e., G.R. Manufacturing option packages.
24. Used Products (except as otherwise provided in section L below).

F. TERMINATION OF WARRANTY-

John Deere is relieved of its obligations under Standard Warranty, StructurALL Warranty, Factory-Installed Undercarriage Warranty and/or Extended Warranty if:

1. The product is modified or altered in ways not approved by John Deere; or
2. Any unapproved or improperly sized attachment is installed on the product. Approval and attachment size shall be at John Deere's sole discretion. (Consult dealer prior to installing attachments or product modification).
3. The product is moved outside the US and/or Canada.

G. PARTS REPLACED UNDER WARRANTY -

Only new or remanufactured parts or components furnished or approved by John Deere, will be used if John Deere elects to repair the product. If any such part or component is defective in material or workmanship when installed in the product, John Deere will repair or replace, as it elects, such defective part or component, provided the defect is reported to an authorized John Deere dealer within 90 days of installation or before expiration of the applicable Standard Warranty, Factory-Installed Undercarriage Warranty and/or StructurALL Warranty whichever is later.

H. TELEMATICS

NOTICE: Products may be equipped with telematics hardware and software ("Telematics") that transmit data to John Deere/ Dealer. Purchaser may deactivate Telematics at www.jdlink.com.

Notwithstanding Purchaser's right, title or interest in the Products, Purchaser agrees that John Deere and Dealer (their affiliates, successors and assigns), without further notice to Purchaser have the right to:

1. Access, use, collect and disclose any data generated by, collected by, or stored in, Products or any hardware or devices interfacing with Products ("Machine Data");
2. Access Machine Data directly through data reporting devices integrated within, or attached to, Products, including Telematics ("Data Reporting Systems"); and
3. Update the Data Reporting Systems software from time to time. Machine Data will only be used in accordance with John Deere's Machine Data Policy, located at www.JohnDeere.com/MachineDataPolicy.

I. OBTAINING WARRANTY SERVICE -

To obtain warranty service, the purchaser must request warranty service from a John Deere dealer authorized to sell the product to be serviced. When making such a request, the purchaser must present evidence of the product's delivery date, make the product available at the dealer's place of business, and inform the dealer in what way the purchaser believes the product to be defective. Standard Warranty, Factory-Installed Undercarriage Warranty and/or StructurALL Warranty repairs may be made in the field if the purchaser and servicing dealer so desire. However, John Deere will not be responsible for any charges (such as dealer travel time, mileage or extra labor) that would not have been incurred had the product been repaired at the dealer's place of business.

J. NO IMPLIED WARRANTY, CONDITIONS OR OTHER REPRESENTATION -

Where permitted by law, neither John Deere nor any company affiliated with it makes any warranties, representations, conditions or promises, express or implied, as to the quality, performance, or freedom from defect of its products, other than those set forth in this document and **NO IMPLIED WARRANTY OF MERCHANTABILITY, CONDITIONS OR FITNESS IS MADE.**

K. NO DEALER WARRANTY -

The selling dealer makes no warranty of its own on any item covered by this warranty and makes no warranty on other items unless the dealer delivers to the purchaser a separate written warranty certificate specifically warranting the item. **The dealer has no authority to make any representation or promise on behalf of John Deere, or to modify the terms or limitations of this warranty in any way.**

L. USED JOHN DEERE PRODUCTS ONLY -

John Deere will transfer remaining Standard Warranty, Factory-Installed Undercarriage Warranty and/or StructurALL Warranty to the purchaser of a used John Deere construction and/or forestry product that has been used for less than the full warranty period provided at the product's original retail purchase. This transfer is not effective until change of ownership is registered by a John Deere dealer. **ALL THE TERMS, INCLUDING LIMITATIONS AND EXCLUSIONS, OF THE JOHN DEERE STANDARD WARRANTY, FACTORY-INSTALLED UNDERCARRIAGE WARRANTY, AND/OR STRUCTURALL WARRANTY ORIGINALLY PROVIDED FOR THE PRODUCT REMAIN IN EFFECT AND APPLICABLE.**



Company ID Number: 513478

THE E-VERIFY PROGRAM FOR EMPLOYMENT VERIFICATION MEMORANDUM OF UNDERSTANDING

ARTICLE I

PURPOSE AND AUTHORITY

This Memorandum of Understanding (MOU) sets forth the points of agreement between the Department of Homeland Security (DHS) and Warrior Tractor & Equipment Co., Inc. (Employer) regarding the Employer's participation in the Employment Eligibility Verification Program (E-Verify). This MOU explains certain features of the E-Verify program and enumerates specific responsibilities of DHS, the Social Security Administration (SSA), and the Employer. E-Verify is a program that electronically confirms an employee's eligibility to work in the United States after completion of the Employment Eligibility Verification Form (Form I-9). For covered government contractors, E-Verify is used to verify the employment eligibility of all newly hired employees and all existing employees assigned to Federal contracts or to verify the entire workforce if the contractor so chooses.

Authority for the E-Verify program is found in Title IV, Subtitle A, of the Illegal Immigration Reform and Immigrant Responsibility Act of 1996 (IIRIRA), Pub. L. 104-208, 110 Stat. 3009, as amended (8 U.S.C. § 1324a note). Authority for use of the E-Verify program by Federal contractors and subcontractors covered by the terms of Subpart 22.18, "Employment Eligibility Verification", of the Federal Acquisition Regulation (FAR) (hereinafter referred to in this MOU as a "Federal contractor with the FAR E-Verify clause") to verify the employment eligibility of certain employees working on Federal contracts is also found in Subpart 22.18 and in Executive Order 12989, as amended.

ARTICLE II

FUNCTIONS TO BE PERFORMED

A. RESPONSIBILITIES OF SSA

1. SSA agrees to provide the Employer with available information that allows the Employer to confirm the accuracy of Social Security Numbers provided by all employees verified under this MOU and the employment authorization of U.S. citizens.
2. SSA agrees to provide to the Employer appropriate assistance with operational problems that may arise during the Employer's participation in the E-Verify program. SSA agrees to provide the Employer with names, titles, addresses, and telephone numbers of SSA representatives to be contacted during the E-Verify process.
3. SSA agrees to safeguard the information provided by the Employer through the E-Verify program procedures, and to limit access to such information, as is appropriate by law, to individuals responsible for the verification of Social Security Numbers and for evaluation of the E-Verify program or such other persons or entities who may be authorized by SSA as governed

Company ID Number: 513478

by the Privacy Act (5 U.S.C. § 552a), the Social Security Act (42 U.S.C. 1306(a)), and SSA regulations (20 CFR Part 401).

4. SSA agrees to provide a means of automated verification that is designed (in conjunction with DHS's automated system if necessary) to provide confirmation or tentative nonconfirmation of U.S. citizens' employment eligibility within 3 Federal Government work days of the initial inquiry.

5. SSA agrees to provide a means of secondary verification (including updating SSA records as may be necessary) for employees who contest SSA tentative nonconfirmations that is designed to provide final confirmation or nonconfirmation of U.S. citizens' employment eligibility and accuracy of SSA records for both citizens and non-citizens within 10 Federal Government work days of the date of referral to SSA, unless SSA determines that more than 10 days may be necessary. In such cases, SSA will provide additional verification instructions.

B. RESPONSIBILITIES OF DHS

1. After SSA verifies the accuracy of SSA records for employees through E-Verify, DHS agrees to provide the Employer access to selected data from DHS's database to enable the Employer to conduct, to the extent authorized by this MOU:

- Automated verification checks on employees by electronic means, and
- Photo verification checks (when available) on employees.

2. DHS agrees to provide to the Employer appropriate assistance with operational problems that may arise during the Employer's participation in the E-Verify program. DHS agrees to provide the Employer names, titles, addresses, and telephone numbers of DHS representatives to be contacted during the E-Verify process.

3. DHS agrees to make available to the Employer at the E-Verify Web site and on the E-Verify Web browser, instructional materials on E-Verify policies, procedures and requirements for both SSA and DHS, including restrictions on the use of E-Verify. DHS agrees to provide training materials on E-Verify.

4. DHS agrees to provide to the Employer a notice, which indicates the Employer's participation in the E-Verify program. DHS also agrees to provide to the Employer anti-discrimination notices issued by the Office of Special Counsel for Immigration-Related Unfair Employment Practices (OSC), Civil Rights Division, U.S. Department of Justice.

5. DHS agrees to issue the Employer a user identification number and password that permits the Employer to verify information provided by employees with DHS's database.

6. DHS agrees to safeguard the information provided to DHS by the Employer, and to limit access to such information to individuals responsible for the verification of employees' employment eligibility and for evaluation of the E-Verify program, or to such other persons or entities as may be authorized by applicable law. Information will be used only to verify the accuracy of Social Security Numbers and employment eligibility, to enforce the Immigration and



Company ID Number: 513478

Nationality Act (INA) and Federal criminal laws, and to administer Federal contracting requirements.

7. DHS agrees to provide a means of automated verification that is designed (in conjunction with SSA verification procedures) to provide confirmation or tentative nonconfirmation of employees' employment eligibility within 3 Federal Government work days of the initial inquiry.

8. DHS agrees to provide a means of secondary verification (including updating DHS records as may be necessary) for employees who contest DHS tentative nonconfirmations and photo non-match tentative nonconfirmations that is designed to provide final confirmation or nonconfirmation of the employees' employment eligibility within 10 Federal Government work days of the date of referral to DHS, unless DHS determines that more than 10 days may be necessary. In such cases, DHS will provide additional verification instructions.

C. RESPONSIBILITIES OF THE EMPLOYER

1. The Employer agrees to display the notices supplied by DHS in a prominent place that is clearly visible to prospective employees and all employees who are to be verified through the system.

2. The Employer agrees to provide to the SSA and DHS the names, titles, addresses, and telephone numbers of the Employer representatives to be contacted regarding E-Verify.

3. The Employer agrees to become familiar with and comply with the most recent version of the E-Verify User Manual.

4. The Employer agrees that any Employer Representative who will perform employment verification queries will complete the E-Verify Tutorial before that individual initiates any queries.

A. The Employer agrees that all Employer representatives will take the refresher tutorials initiated by the E-Verify program as a condition of continued use of E-Verify.

B. Failure to complete a refresher tutorial will prevent the Employer from continued use of the program.

5. The Employer agrees to comply with current Form I-9 procedures, with two exceptions:

- If an employee presents a "List B" identity document, the Employer agrees to only accept "List B" documents that contain a photo. (List B documents identified in 8 C.F.R. § 274a.2(b)(1)(B)) can be presented during the Form I-9 process to establish identity.) If an employee objects to the photo requirement for religious reasons, the Employer should contact E-Verify at 888-464-4218.

- If an employee presents a DHS Form I-551 (Permanent Resident Card) or Form I-766 (Employment Authorization Document) to complete the Form I-9, the Employer agrees to make a photocopy of the document and to retain the photocopy with the employee's Form I-9. The photocopy must be of sufficient quality to allow for verification of the photo

Company ID Number: 513478

and written information. The employer will use the photocopy to verify the photo and to assist DHS with its review of photo non-matches that are contested by employees. Note that employees retain the right to present any List A, or List B and List C, documentation to complete the Form I-9. DHS may in the future designate other documents that activate the photo screening tool.

6. The Employer understands that participation in E-Verify does not exempt the Employer from the responsibility to complete, retain, and make available for inspection Forms I-9 that relate to its employees, or from other requirements of applicable regulations or laws, including the obligation to comply with the antidiscrimination requirements of section 274B of the INA with respect to Form I-9 procedures, except for the following modified requirements applicable by reason of the Employer's participation in E-Verify: (1) identity documents must have photos, as described in paragraph 5 above; (2) a rebuttable presumption is established that the Employer has not violated section 274A(a)(1)(A) of the Immigration and Nationality Act (INA) with respect to the hiring of any individual if it obtains confirmation of the identity and employment eligibility of the individual in good faith compliance with the terms and conditions of E-Verify; (3) the Employer must notify DHS if it continues to employ any employee after receiving a final nonconfirmation, and is subject to a civil money penalty between \$550 and \$1,100 for each failure to notify DHS of continued employment following a final nonconfirmation; (4) the Employer is subject to a rebuttable presumption that it has knowingly employed an unauthorized alien in violation of section 274A(a)(1)(A) if the Employer continues to employ an employee after receiving a final nonconfirmation; and (5) no person or entity participating in E-Verify is civilly or criminally liable under any law for any action taken in good faith based on information provided through the confirmation system. DHS reserves the right to conduct Form I-9 and E-Verify system compliance inspections during the course of E-Verify, as well as to conduct any other enforcement activity authorized by law.

7. The Employer agrees to initiate E-Verify verification procedures for new employees within 3 Employer business days after each employee has been hired (but after the Form I-9 has been completed), and to complete as many (but only as many) steps of the E-Verify process as are necessary according to the E-Verify User Manual, or in the case of Federal contractors with the FAR E-Verify clause, the E-Verify User Manual for Federal Contractors. The Employer is prohibited from initiating verification procedures before the employee has been hired and the Form I-9 completed. If the automated system to be queried is temporarily unavailable, the 3-day time period is extended until it is again operational in order to accommodate the Employer's attempting, in good faith, to make inquiries during the period of unavailability. Employers may initiate verification by notating the Form I-9 in circumstances where the employee has applied for a Social Security Number (SSN) from the SSA and is waiting to receive the SSN, provided that the Employer performs an E-Verify employment verification query using the employee's SSN as soon as the SSN becomes available.

8. The Employer agrees not to use E-Verify procedures for pre-employment screening of job applicants, in support of any unlawful employment practice, or for any other use not authorized by this MOU. Employers must use E-Verify for all new employees, unless an Employer is a Federal contractor that qualifies for the exceptions described in Article II.D.1.c. Except as provided in Article II.D, the Employer will not verify selectively and will not verify employees hired before the effective date of this MOU. The Employer understands that if the Employer

Company ID Number: 513478

uses the E-Verify system for any purpose other than as authorized by this MOU, the Employer may be subject to appropriate legal action and termination of its access to SSA and DHS information pursuant to this MOU.

9. The Employer agrees to follow appropriate procedures (see Article III. below) regarding tentative nonconfirmations, including notifying employees in private of the finding and providing them written notice of the findings, providing written referral instructions to employees, allowing employees to contest the finding, and not taking adverse action against employees if they choose to contest the finding. Further, when employees contest a tentative nonconfirmation based upon a photo non-match, the Employer is required to take affirmative steps (see Article III.B. below) to contact DHS with information necessary to resolve the challenge.

10. The Employer agrees not to take any adverse action against an employee based upon the employee's perceived employment eligibility status while SSA or DHS is processing the verification request unless the Employer obtains knowledge (as defined in 8 C.F.R. § 274a.1(l)) that the employee is not work authorized. The Employer understands that an initial inability of the SSA or DHS automated verification system to verify work authorization, a tentative nonconfirmation, a case in continuance (indicating the need for additional time for the government to resolve a case), or the finding of a photo non-match, does not establish, and should not be interpreted as evidence, that the employee is not work authorized. In any of the cases listed above, the employee must be provided a full and fair opportunity to contest the finding, and if he or she does so, the employee may not be terminated or suffer any adverse employment consequences based upon the employee's perceived employment eligibility status (including denying, reducing, or extending work hours, delaying or preventing training, requiring an employee to work in poorer conditions, refusing to assign the employee to a Federal contract or other assignment, or otherwise subjecting an employee to any assumption that he or she is unauthorized to work) until and unless secondary verification by SSA or DHS has been completed and a final nonconfirmation has been issued. If the employee does not choose to contest a tentative nonconfirmation or a photo non-match or if a secondary verification is completed and a final nonconfirmation is issued, then the Employer can find the employee is not work authorized and terminate the employee's employment. Employers or employees with questions about a final nonconfirmation may call E-Verify at 1-888-464-4218 or OSC at 1-800-255-8155 or 1-800-237-2515 (TDD).

11. The Employer agrees to comply with Title VII of the Civil Rights Act of 1964 and section 274B of the INA, as applicable, by not discriminating unlawfully against any individual in hiring, firing, or recruitment or referral practices because of his or her national origin or, in the case of a protected individual as defined in section 274B(a)(3) of the INA, because of his or her citizenship status. The Employer understands that such illegal practices can include selective verification or use of E-Verify except as provided in part D below, or discharging or refusing to hire employees because they appear or sound "foreign" or have received tentative nonconfirmations. The Employer further understands that any violation of the unfair immigration-related employment practices provisions in section 274B of the INA could subject the Employer to civil penalties, back pay awards, and other sanctions, and violations of Title VII could subject the Employer to back pay awards, compensatory and punitive damages. Violations of either section 274B of the INA or Title VII may also lead to the termination of its participation in E-

Company ID Number: 513478

Verify. If the Employer has any questions relating to the anti-discrimination provision, it should contact OSC at 1-800-255-8155 or 1-800-237-2515 (TDD).

12. The Employer agrees to record the case verification number on the employee's Form I-9 or to print the screen containing the case verification number and attach it to the employee's Form I-9.

13. The Employer agrees that it will use the information it receives from SSA or DHS pursuant to E-Verify and this MOU only to confirm the employment eligibility of employees as authorized by this MOU. The Employer agrees that it will safeguard this information, and means of access to it (such as PINS and passwords) to ensure that it is not used for any other purpose and as necessary to protect its confidentiality, including ensuring that it is not disseminated to any person other than employees of the Employer who are authorized to perform the Employer's responsibilities under this MOU, except for such dissemination as may be authorized in advance by SSA or DHS for legitimate purposes.

14. The Employer acknowledges that the information which it receives from SSA is governed by the Privacy Act (5 U.S.C. § 552a(i)(1) and (3)) and the Social Security Act (42 U.S.C. 1306(a)), and that any person who obtains this information under false pretenses or uses it for any purpose other than as provided for in this MOU may be subject to criminal penalties.

15. The Employer agrees to cooperate with DHS and SSA in their compliance monitoring and evaluation of E-Verify, including by permitting DHS and SSA, upon reasonable notice, to review Forms I-9 and other employment records and to interview it and its employees regarding the Employer's use of E-Verify, and to respond in a timely and accurate manner to DHS requests for information relating to their participation in E-Verify.

D. RESPONSIBILITIES OF FEDERAL CONTRACTORS WITH THE FAR E-VERIFY CLAUSE

1. The Employer understands that if it is a subject to the employment verification terms in Subpart 22.18 of the FAR, it must verify the employment eligibility of any existing employee assigned to the contract and all new hires, as discussed in the Supplemental Guide for Federal Contractors. Once an employee has been verified through E-Verify by the Employer, the Employer may not reverify the employee through E-Verify.

a. Federal contractors with the FAR E-Verify clause agree to become familiar with and comply with the most recent versions of the E-Verify User Manual for Federal Contractors and the E-Verify Supplemental Guide for Federal Contractors.

b. Federal contractors with the FAR E-Verify clause agree to complete a tutorial for Federal contractors with the FAR E-Verify clause.

c. Federal contractors with the FAR E-Verify clause not enrolled at the time of contract award: An Employer that is not enrolled in E-Verify at the time of a contract award must enroll as a Federal contractor with the FAR E-Verify clause in E-Verify within 30 calendar days of contract award and, within 90 days of enrollment, begin to use E-Verify to initiate verification of employment eligibility of new hires of the Employer who are working in the United States,



Company ID Number: 513478

whether or not assigned to the contract. Once the Employer begins verifying new hires, such verification of new hires must be initiated within 3 business days after the date of hire. Once enrolled in E-Verify as a Federal contractor with the FAR E-Verify clause, the Employer must initiate verification of employees assigned to the contract within 90 calendar days from the time of enrollment in the system and after the date and selecting which employees will be verified in E-Verify or within 30 days of an employee's assignment to the contract, whichever date is later.

d. Employers that are already enrolled in E-Verify at the time of a contract award but are not enrolled in the system as a Federal contractor with the FAR E-Verify clause: Employers enrolled in E-Verify for 90 days or more at the time of a contract award must use E-Verify to initiate verification of employment eligibility for new hires of the Employer who are working in the United States, whether or not assigned to the contract, within 3 business days after the date of hire. Employers enrolled in E-Verify as other than a Federal contractor with the FAR E-Verify clause, must update E-Verify to indicate that they are a Federal contractor with the FAR E-Verify clause within 30 days after assignment to the contract. If the Employer is enrolled in E-Verify for 90 calendar days or less at the time of contract award, the Employer must, within 90 days of enrollment, begin to use E-Verify to initiate verification of new hires of the contractor who are working in the United States, whether or not assigned to the contract. Such verification of new hires must be initiated within 3 business days after the date of hire. An Employer enrolled as a Federal contractor with the FAR E-Verify clause in E-Verify must initiate verification of each employee assigned to the contract within 90 calendar days after date of contract award or within 30 days after assignment to the contract, whichever is later.

e. Institutions of higher education, State, local and tribal governments and sureties: Federal contractors with the FAR E-Verify clause that are institutions of higher education (as defined at 20 U.S.C. 1001(a)), State or local governments, governments of Federally recognized Indian tribes, or sureties performing under a takeover agreement entered into with a Federal agency pursuant to a performance bond may choose to only verify new and existing employees assigned to the Federal contract. Such Federal contractors with the FAR E-Verify clause may, however, elect to verify all new hires, and/or all existing employees hired after November 6, 1986. The provisions of Article II.D, paragraphs 1.a and 1.b of this MOU providing timeframes for initiating employment verification of employees assigned to a contract apply to such institutions of higher education, State, local and tribal governments, and sureties.

f. Verification of all employees: Upon enrollment, Employers who are Federal contractors with the FAR E-Verify clause may elect to verify employment eligibility of all existing employees working in the United States who were hired after November 6, 1986, instead of verifying only new employees and those existing employees assigned to a covered Federal contract. After enrollment, Employers must elect to do so only in the manner designated by DHS and initiate E-Verify verification of all existing employees within 180 days after the election.

g. Form I-9 procedures for existing employees of Federal contractors with the FAR E-Verify clause: Federal contractors with the FAR E-Verify clause may choose to complete new Forms I-9 for all existing employees other than those that are completely exempt from this process. Federal contractors with the FAR E-Verify clause may also update previously completed Forms I-9 to initiate E-Verify verification of existing employees who are not completely exempt as long as that Form I-9 is complete (including the SSN), complies with

Company ID Number: 513478

Article II.C.5, the employee's work authorization has not expired, and the Employer has reviewed the information reflected in the Form I-9 either in person or in communications with the employee to ensure that the employee's stated basis in section 1 of the Form I-9 for work authorization has not changed (including, but not limited to, a lawful permanent resident alien having become a naturalized U.S. citizen). If the Employer is unable to determine that the Form I-9 complies with Article II.C.5, if the employee's basis for work authorization as attested in section 1 has expired or changed, or if the Form I-9 contains no SSN or is otherwise incomplete, the Employer shall complete a new I-9 consistent with Article II.C.5, or update the previous I-9 to provide the necessary information. If section 1 of the Form I-9 is otherwise valid and up-to-date and the form otherwise complies with Article II.C.5, but reflects documentation (such as a U.S. passport or Form I-551) that expired subsequent to completion of the Form I-9, the Employer shall not require the production of additional documentation, or use the photo screening tool described in Article II.C.5, subject to any additional or superseding instructions that may be provided on this subject in the Supplemental Guide for Federal Contractors. Nothing in this section shall be construed to require a second verification using E-Verify of any assigned employee who has previously been verified as a newly hired employee under this MOU, or to authorize verification of any existing employee by any Employer that is not a Federal contractor with the FAR E-Verify clause.

2. The Employer understands that if it is a Federal contractor with the FAR E-Verify clause, its compliance with this MOU is a performance requirement under the terms of the Federal contract or subcontract, and the Employer consents to the release of information relating to compliance with its verification responsibilities under this MOU to contracting officers or other officials authorized to review the Employer's compliance with Federal contracting requirements.

ARTICLE III

REFERRAL OF INDIVIDUALS TO SSA AND DHS

A. REFERRAL TO SSA

1. If the Employer receives a tentative nonconfirmation issued by SSA, the Employer must print the notice as directed by the E-Verify system and provide it to the employee so that the employee may determine whether he or she will contest the tentative nonconfirmation. The Employer must review the tentative nonconfirmation with the employee in private.

2. The Employer will refer employees to SSA field offices only as directed by the automated system based on a tentative nonconfirmation, and only after the Employer records the case verification number, reviews the input to detect any transaction errors, and determines that the employee contests the tentative nonconfirmation. The Employer will transmit the Social Security Number to SSA for verification again if this review indicates a need to do so. The Employer will determine whether the employee contests the tentative nonconfirmation as soon as possible after the Employer receives it.

3. If the employee contests an SSA tentative nonconfirmation, the Employer will provide the employee with a system-generated referral letter and instruct the employee to visit an SSA office within 8 Federal Government work days. SSA will electronically transmit the result of the referral to the Employer within 10 Federal Government work days of the referral unless it

Company ID Number: 513478

determines that more than 10 days is necessary. The Employer agrees to check the E-Verify system regularly for case updates.

4. The Employer agrees not to ask the employee to obtain a printout from the Social Security Number database (the Numident) or other written verification of the Social Security Number from the SSA.

B. REFERRAL TO DHS

1. If the Employer receives a tentative nonconfirmation issued by DHS, the Employer must print the tentative nonconfirmation notice as directed by the E-Verify system and provide it to the employee so that the employee may determine whether he or she will contest the tentative nonconfirmation. The Employer must review the tentative nonconfirmation with the employee in private.

2. If the Employer finds a photo non-match for an employee who provides a document for which the automated system has transmitted a photo, the employer must print the photo non-match tentative nonconfirmation notice as directed by the automated system and provide it to the employee so that the employee may determine whether he or she will contest the finding. The Employer must review the tentative nonconfirmation with the employee in private.

3. The Employer agrees to refer individuals to DHS only when the employee chooses to contest a tentative nonconfirmation received from DHS automated verification process or when the Employer issues a tentative nonconfirmation based upon a photo non-match. The Employer will determine whether the employee contests the tentative nonconfirmation as soon as possible after the Employer receives it.

4. If the employee contests a tentative nonconfirmation issued by DHS, the Employer will provide the employee with a referral letter and instruct the employee to contact DHS through its toll-free hotline (as found on the referral letter) within 8 Federal Government work days.

5. If the employee contests a tentative nonconfirmation based upon a photo non-match, the Employer will provide the employee with a referral letter to DHS. DHS will electronically transmit the result of the referral to the Employer within 10 Federal Government work days of the referral unless it determines that more than 10 days is necessary. The Employer agrees to check the E-Verify system regularly for case updates.

6. The Employer agrees that if an employee contests a tentative nonconfirmation based upon a photo non-match, the Employer will send a copy of the employee's Form I-551 or Form I-766 to DHS for review by:

- Scanning and uploading the document, or
- Sending a photocopy of the document by an express mail account (paid for at employer expense).

7. If the Employer determines that there is a photo non-match when comparing the photocopied List B document described in Article II.C.5 with the image generated in E-Verify, the Employer must forward the employee's documentation to DHS using one of the means described in the preceding paragraph, and allow DHS to resolve the case.

Company ID Number: 513478

ARTICLE IV

SERVICE PROVISIONS

SSA and DHS will not charge the Employer for verification services performed under this MOU. The Employer is responsible for providing equipment needed to make inquiries. To access E-Verify, an Employer will need a personal computer with Internet access.

ARTICLE V

PARTIES

A. This MOU is effective upon the signature of all parties, and shall continue in effect for as long as the SSA and DHS conduct the E-Verify program unless modified in writing by the mutual consent of all parties, or terminated by any party upon 30 days prior written notice to the others. Any and all system enhancements to the E-Verify program by DHS or SSA, including but not limited to the E-Verify checking against additional data sources and instituting new verification procedures, will be covered under this MOU and will not cause the need for a supplemental MOU that outlines these changes. DHS agrees to train employers on all changes made to E-Verify through the use of mandatory refresher tutorials and updates to the E-Verify User Manual, the E-Verify User Manual for Federal Contractors or the E-Verify Supplemental Guide for Federal Contractors. Even without changes to E-Verify, DHS reserves the right to require employers to take mandatory refresher tutorials. An Employer that is a Federal contractor with the FAR E-Verify clause may terminate this MOU when the Federal contract that requires its participation in E-Verify is terminated or completed. In such a circumstance, the Federal contractor with the FAR E-Verify clause must provide written notice to DHS. If an Employer that is a Federal contractor with the FAR E-Verify clause fails to provide such notice, that Employer will remain a participant in the E-Verify program, will remain bound by the terms of this MOU that apply to participants that are not Federal contractors with the FAR E-Verify clause, and will be required to use the E-Verify procedures to verify the employment eligibility of all newly hired employees.

B. Notwithstanding Article V, part A of this MOU, DHS may terminate this MOU if deemed necessary because of the requirements of law or policy, or upon a determination by SSA or DHS that there has been a breach of system integrity or security by the Employer, or a failure on the part of the Employer to comply with established procedures or legal requirements. The Employer understands that if it is a Federal contractor with the FAR E-Verify clause, termination of this MOU by any party for any reason may negatively affect its performance of its contractual responsibilities.

C. Some or all SSA and DHS responsibilities under this MOU may be performed by contractor(s), and SSA and DHS may adjust verification responsibilities between each other as they may determine necessary. By separate agreement with DHS, SSA has agreed to perform its responsibilities as described in this MOU.

Company ID Number: 513478

D. Nothing in this MOU is intended, or should be construed, to create any right or benefit, substantive or procedural, enforceable at law by any third party against the United States, its agencies, officers, or employees, or against the Employer, its agents, officers, or employees.

E. Each party shall be solely responsible for defending any claim or action against it arising out of or related to E-Verify or this MOU, whether civil or criminal, and for any liability wherefrom, including (but not limited to) any dispute between the Employer and any other person or entity regarding the applicability of Section 403(d) of IIRIRA to any action taken or allegedly taken by the Employer.

F. The Employer understands that the fact of its participation in E-Verify is not confidential information and may be disclosed as authorized or required by law and DHS or SSA policy, including but not limited to, Congressional oversight, E-Verify publicity and media inquiries, determinations of compliance with Federal contractual requirements, and responses to inquiries under the Freedom of Information Act (FOIA).

G. The foregoing constitutes the full agreement on this subject between DHS and the Employer.

H. The individuals whose signatures appear below represent that they are authorized to enter into this MOU on behalf of the Employer and DHS respectively.



Company ID Number: 513478

To be accepted as a participant in E-Verify, you should only sign the Employer's Section of the signature page. If you have any questions, contact E-Verify at 888-464-4218.

Employer Warrior Tractor & Equipment Co., Inc.	
Stanley McCracken	
Name (Please Type or Print)	Title
Electronically Signed	03/01/2012
Signature	Date
Department of Homeland Security – Verification Division	
USCIS Verification Division	
Name (Please Type or Print)	Title
Electronically Signed	03/01/2012
Signature	Date
Information Required for the E-Verify Program	
Information relating to your Company:	
Company Name:	Warrior Tractor & Equipment Co., Inc.
Company Facility Address:	6801 McFarland Blvd
	Northport, AL 35476
Company Alternate Address:	P O Box 412
	Northport, AL 35476
County or Parish:	TUSCALOOSA
Employer Identification Number:	630588737

Company ID Number: 513478

North American Industry Classification Systems Code:	423
Administrator:	Warrior Tractor and Equipment Co., Inc.
Number of Employees:	100 to 499
Number of Sites Verified for:	1
Are you verifying for more than 1 site? If yes, please provide the number of sites verified for in each State:	
<ul style="list-style-type: none">• ALABAMA 1 site(s)	

Information relating to the Program Administrator(s) for your Company on policy questions or operational problems:

Name:	Stanley N McCracken	Fax Number:	(205) 333 - 0101
Telephone Number:	(205) 339 - 0300		
E-mail Address:	wte024@warriortractor.com		