



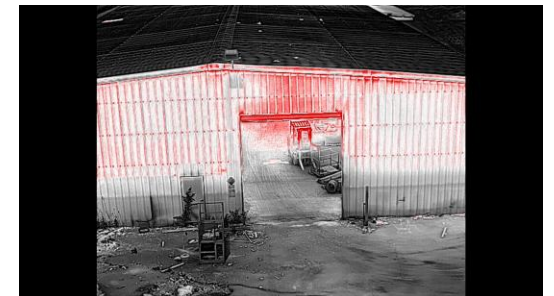
# Drone Utilization in Alabama Counties

---

Chris Tate, MPA, CEM®, MLEM  
EM Officer, Jefferson County EMA

# Drone Usage

- Search & Rescue
- Overwatch/Special Unit Deployment
- Accident Reconstruction
- Crowd Control
- Fire Ground Operations
- Situational Awareness
- Hazardous Materials Release/ID
- Woodland Fire Fighting
- Large Event Management
- Disaster Response
- Pre-event Planning
- Recruiting
- Others.....



# Barriers to Success

- No focused plan on UAS program
  - What do you want to accomplish?
  - Who will you support
  - How will you fund and sustain it?
- Drone programs can be expensive
  - Depends on what capabilities you want.
  - Some drones are expensive, some aren't.
  - Collaborate with other agencies
- Rules and Regulation Confusion
  - Part 107 or COA?
  - No state rules
  - Creating your own policies/procedures?

# Questions & Contact Info



Chris Tate

Jefferson County EMA

205-254-2039

[tatec@jccal.org](mailto:tatec@jccal.org)