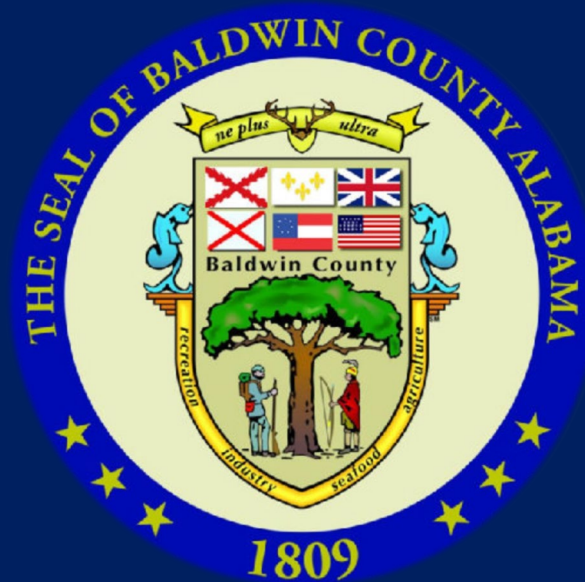


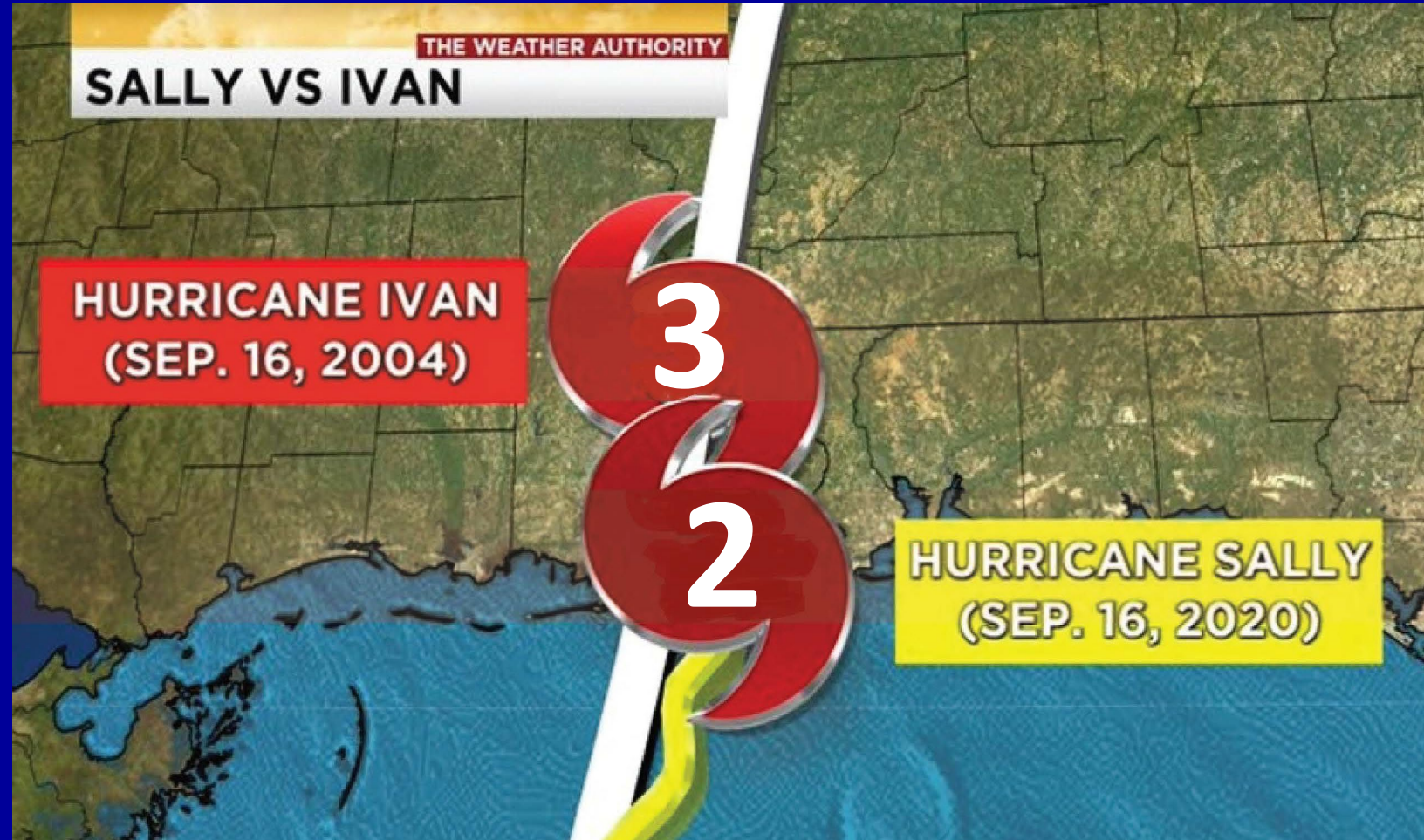
Hurricane Sally

September 16, 2020

Overview, Response, and Recovery



Sally Vs Ivan



Statistics and Comparisons

Hurricane Ivan

- Category 3 Hurricane
- 120 mph sustained winds with forward speed of 13 mph
- Approximately 12 inches of rainfall
- 2.5 million cubic yards of debris
- \$20 million damage cost to Baldwin County Commission

Hurricane Ivan 2004



Statistics and Comparisons

2014 Historic Flash Flood

- 24 inches of rainfall within 24 hours
- 264 roads impassable at one time
- 76 major culvert crossings damaged requiring replacement
- 180 ft long bridge damaged requiring replacement
- \$18 million damage cost to Baldwin County Commission

2014 Historic Flash Flood



Katrina 2005



Ike 2008



Gustav 2008



Ida 2009



Isaac 2012



Nate 2017



Statistics and Comparisons

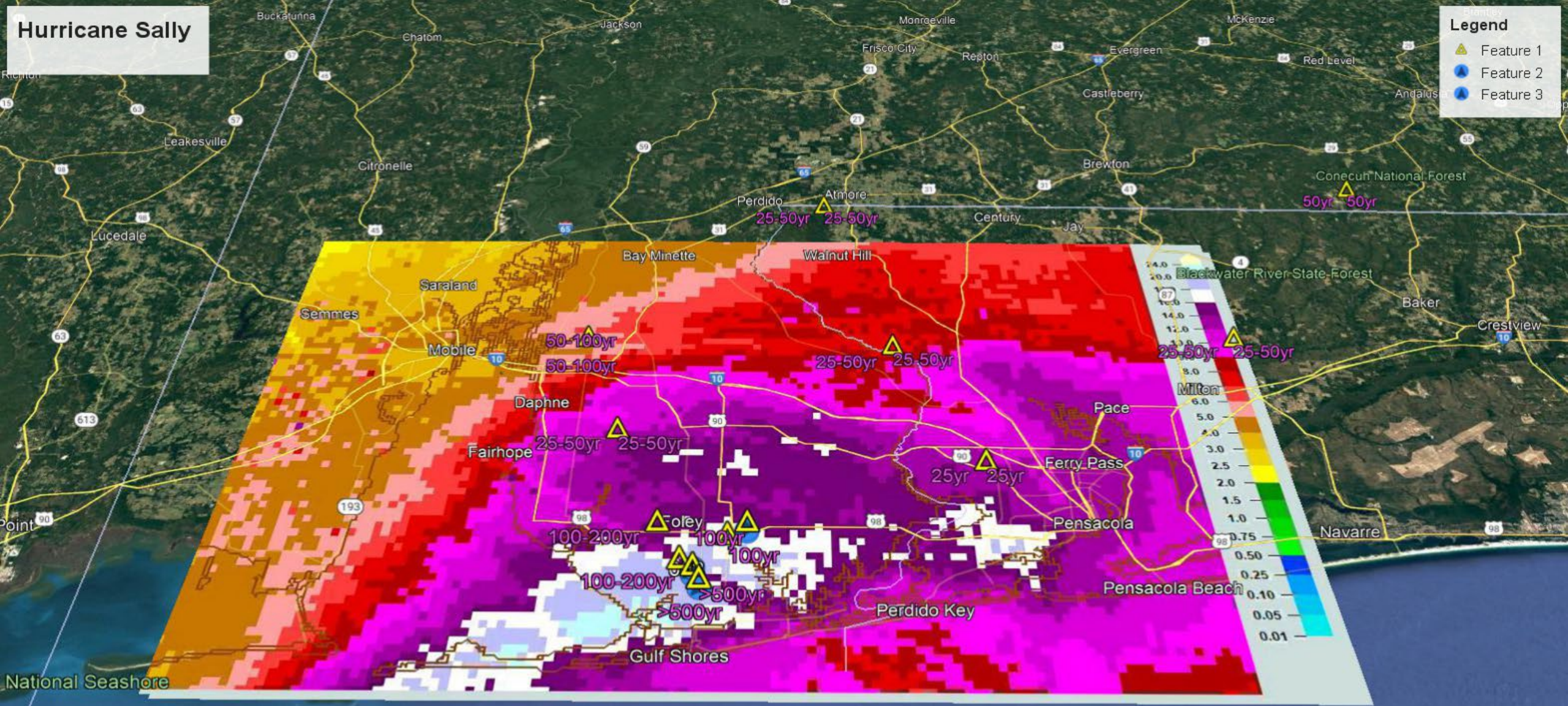
Hurricane Sally

- Category 2 Hurricane
- 105 mph sustained winds with forward speed of 2 mph
- 20+ inches of rainfall
- 4.4 million cubic yards of debris
- 45 major culvert crossings damaged requiring replacement
- 41 minor drainage locations damaged
- \$80 million damage cost to Baldwin County Commission

Hurricane Sally

Legend

- Feature 1 (Yellow triangle)
- Feature 2 (Blue circle)
- Feature 3 (Blue circle)



Google Earth

Data SIO, NOAA, U.S. Navy, NGA, GEBCO
Image Landsat / Copernicus
Image NOAA
Image © 2022 TerraMetrics



20 mi

Sally Debris



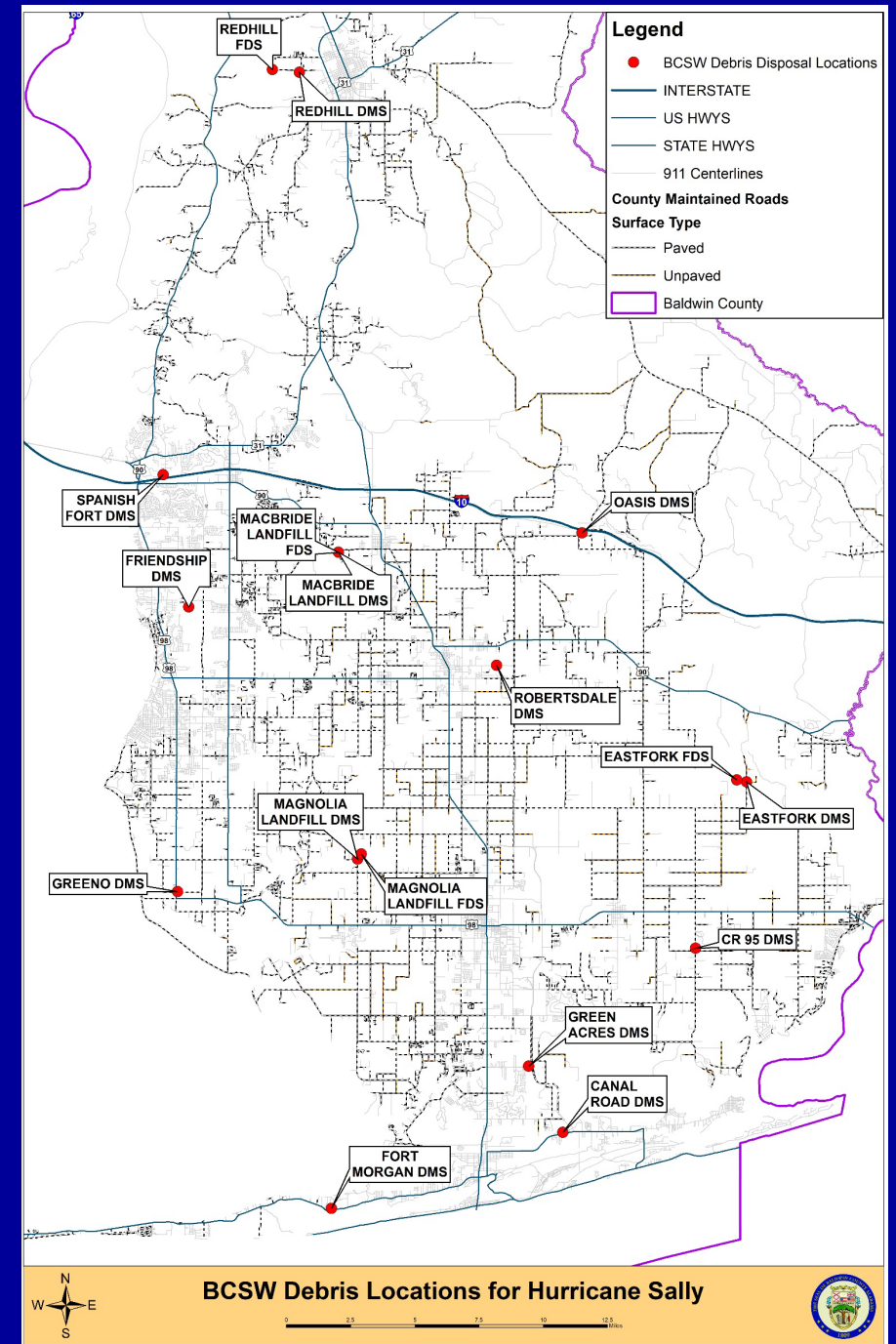
Sally Debris Operation



DJI_0034_MagnoliaSite11-16-2020

BCSW Debris Management Sites for Hurricane Sally

- 13 Temporary Debris Reduction Sites
- 4 Final Disposal Sites at approved landfills



FEMA Work Categories

Emergency Work

Category A: Debris Removal

Category B: Emergency Protective Measures

180 days to complete (Overtime Only)

Permanent Work

Category C: Roads and Bridges

Category D: Water Control Facilities

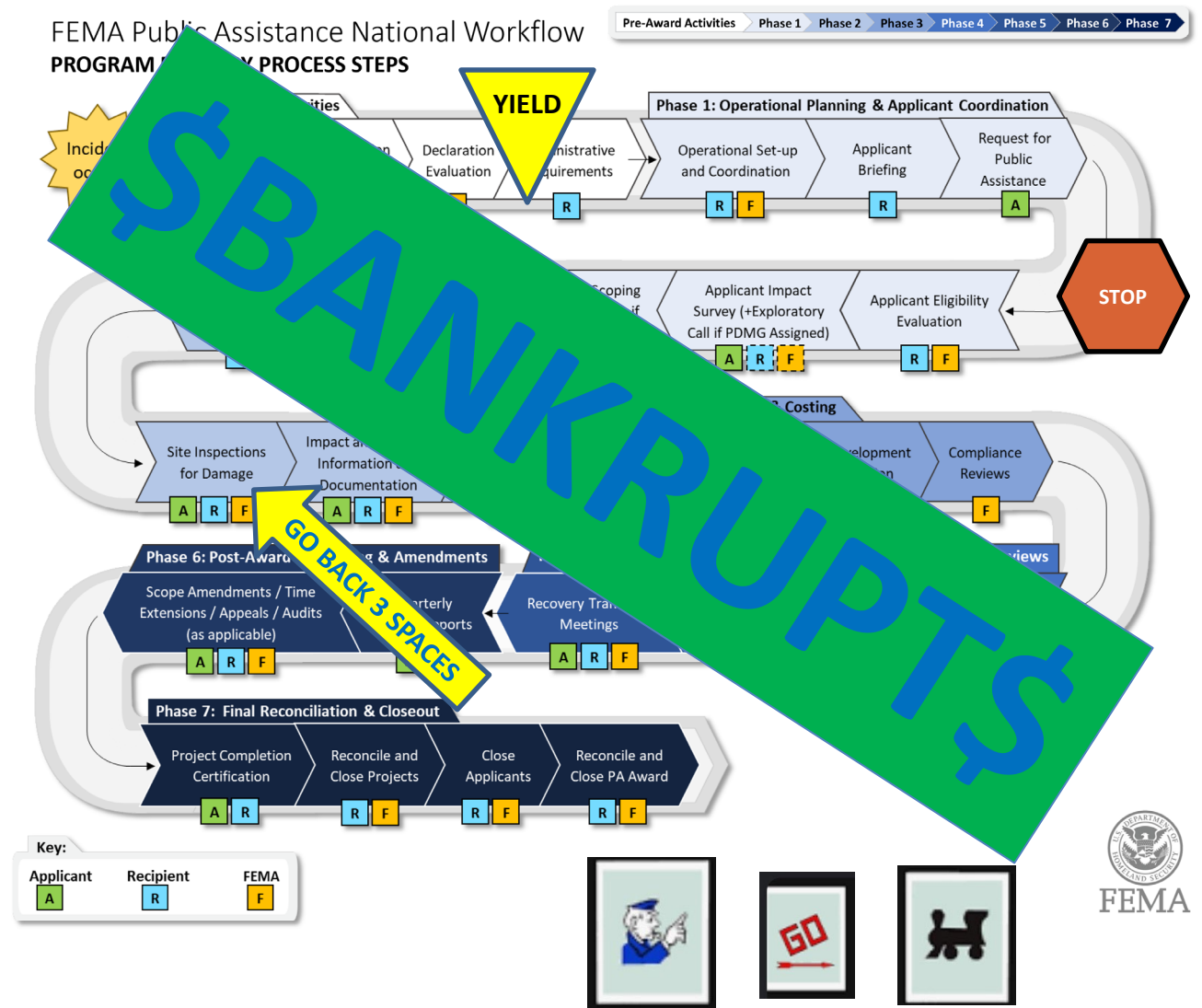
Category E: Public Buildings and contents

Category F: Public Utilities

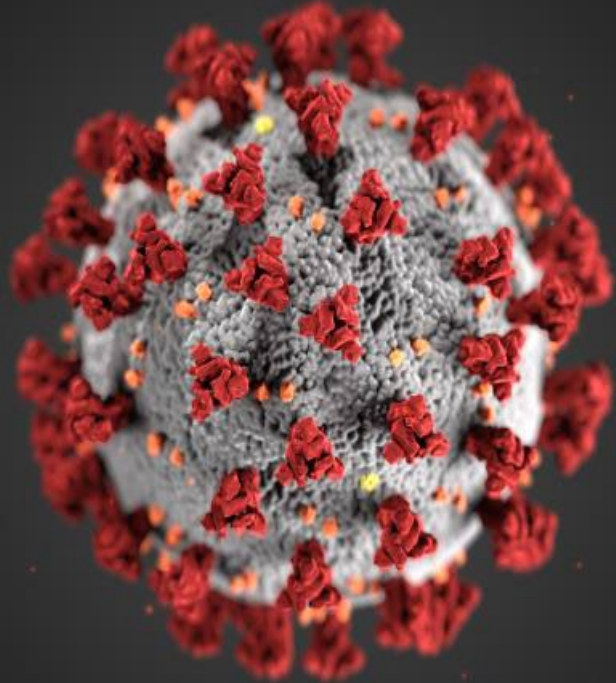
Category G: Parks, recreational, and other facilities

18 months to complete (Regular and Overtime)

Recovery workflow and FEMA Process Overview



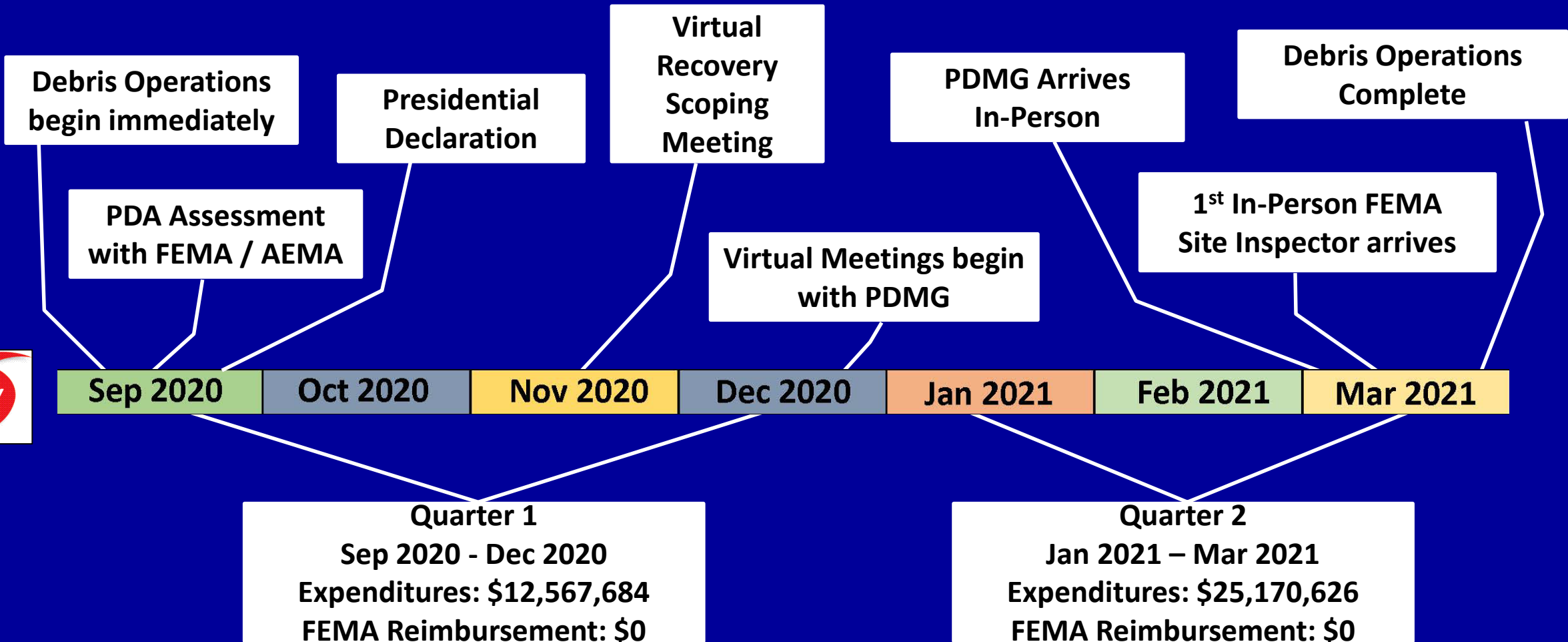
2020 New Challenges



The Virtual Dilemma



Recovery Operations & Reimbursement



Debris Expenditures & Reimbursements

Quarter 1 Sep 2020 - Dec 2020	Quarter 2 Jan 2021 - Mar 2021	Quarter 3 Apr 2021 - Jun 2021	Quarter 4 Jul 2021 - Sep 2021
----------------------------------	----------------------------------	----------------------------------	----------------------------------

Expenditures:
\$12,567,684
FEMA Reimbursement:
\$0

Expenditures:
\$25,170,626
FEMA Reimbursement:
\$0

Expenditures:
\$62,302,359
FEMA Reimbursement:
\$38,251,005

Expenditures:
\$69,586,176
FEMA Reimbursement:
\$38,251,005

Quarter 1 Oct 2021 - Dec 2021	Quarter 2 Jan 2022 - Mar 2022	Quarter 3 Apr 2022 - Jun 2022	Quarter 4 Jul 2022 - Sep 2022
----------------------------------	----------------------------------	----------------------------------	----------------------------------

Expenditures:
\$69,586,176
FEMA Reimbursement:
\$45,316,887

Expenditures:
\$69,586,176
FEMA Reimbursement:
\$47,672,181

Expenditures:
\$69,586,176
FEMA Reimbursement:
\$47,767,974

Expenditures:
\$69,586,176
FEMA Reimbursement:
\$47,767,974

Financials to date

Expenditures:
\$69,586,176
FEMA Reimbursement:
\$47,767,974

FEMA Remaining:
\$14,859,584

State Remaining:
\$3,479,308

Leaners and Hangers

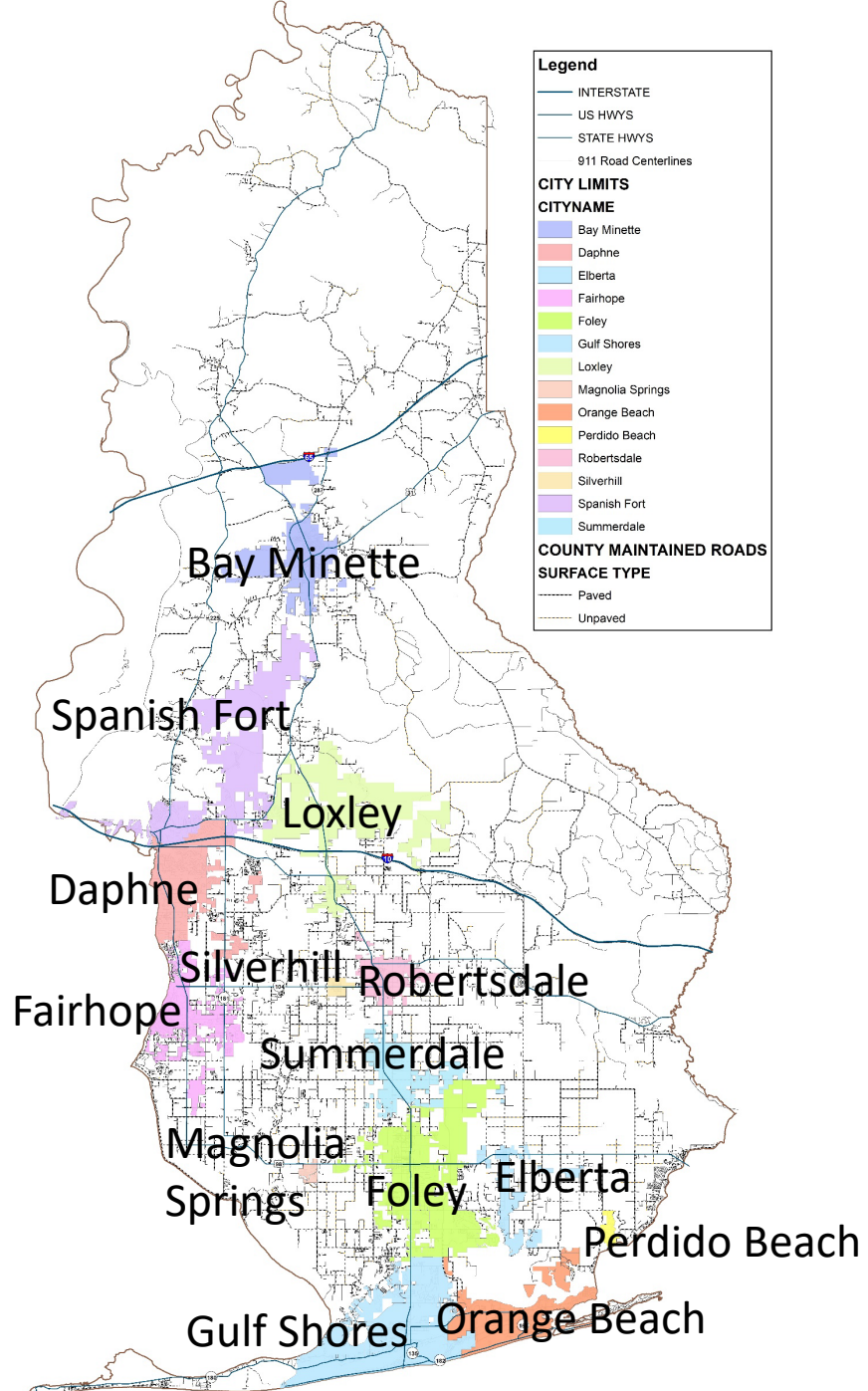
Identifying the threat

DENIED

A photograph of a large, mature pine tree that is leaning significantly to the right. The tree's trunk is thick and textured. In the background, there are other trees and a house with a white porch. A blue diamond-shaped stamp with the word "DENIED" in red capital letters is overlaid on the lower-left portion of the tree.

APPROVED

A photograph of a tall, slender pine tree that is standing upright. The tree is part of a larger forest. In the foreground, there is a road with a stop sign and a green street sign that says "IN RD". A blue diamond-shaped stamp with the word "APPROVED" in yellow capital letters is overlaid on the lower-left portion of the tree.



Legend

- INTERSTATE
- US HWYS
- STATE HWYS
- 911 Road Centerlines

CITY LIMITS

CITYNAME

- Bay Minette
- Daphne
- Elberta
- Fairhope
- Foley
- Gulf Shores
- Loxley
- Magnolia Springs
- Orange Beach
- Perdido Beach
- Robertsdale
- Silverhill
- Spanish Fort
- Summerdale

COUNTY MAINTAINED ROADS

SURFACE TYPE

- Paved
- Unpaved

Bay Minette

Spanish Fort

Loxley

Daphne

Silverhill

Robertsdale

Fairhope

Summerdale

Magnolia Springs

Foley

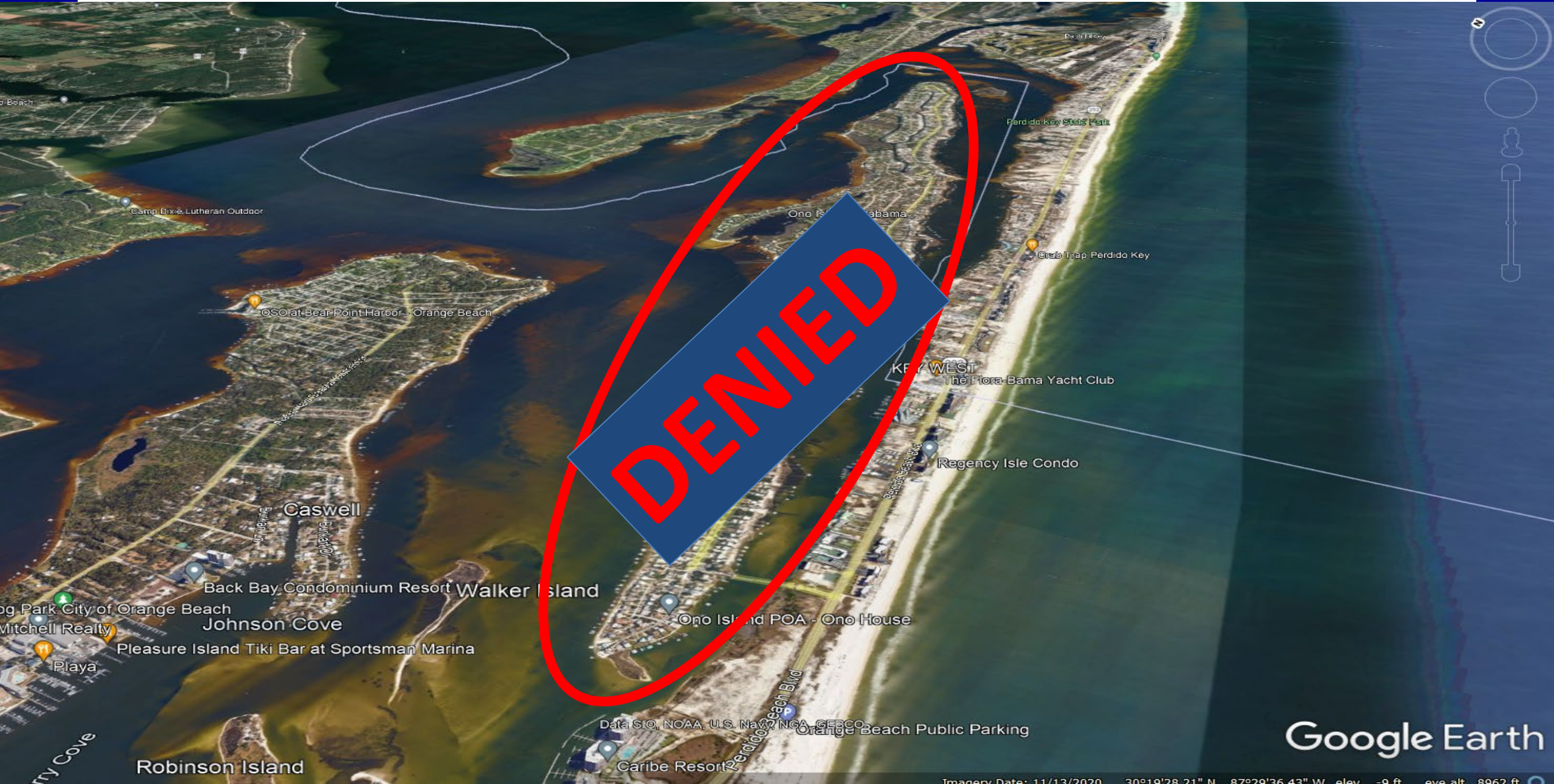
Elberta

Perdido Beach

Gulf Shores

Orange Beach

Private Subdivision Debris



Private Subdivision Debris

- 1,027 homes
- 67,500 Cubic Yards of debris causing severe hazard to public safety.
- Normal trash pickup with County Solid Waste Department.
- Have removed debris during every other declared event through FEMA with no issue.
- Initial FEMA Rep performing Preliminary Damage Assessment verified approval from previous events and included Ono damage in his PDA submittal to Region IV.
- After completion of work, received Determination Memo months later stating work was ineligible and cited initial FEMA Rep did not have authority to grant approval.
- **CURRENTLY APPEALING DECISION.**



Key Takeaways

An aerial photograph of a large hurricane or tropical storm over the ocean. The storm's eye is visible in the center, surrounded by dense, swirling clouds. The surrounding ocean is a deep blue, and the sky is a lighter blue. The overall scene is dramatic and powerful.

- State Involvement
- Having a knowledgeable PDMG
- Applicant's knowledge of FEMA Regulations
- Pre-existing contracts
- Have a plan for cash flow