

**BID SUBMITTAL FORM**  
**Alabama County Joint Bid Program**  
**BID ITEM – 100 HP HYDROSTATIC BULLDOZER – OPTION C**

Company Name: Warrior Tractor & Equipment Company, Inc.

Address: 6801 McFarland Blvd W., Northport, AL 35476

Bid Submitted by: David Schafer  
(Name of company representative)

Title: Sales Manager E-mail address: dschafer@warriortractor.com

Phone: 205-339-0300 Fax: 205-333-0101

By submitting this bid, we agree:

The equipment model number identified below meets the bid specs for this bid item

That the bid price will be honored for all counties for the period from January 1, 2023 to December 31, 2023.

The equipment will be delivered at the bid price to all counties participating in the joint bid program

The company representative listed above will be the contact person for purchasing this bid item under the joint bid program

The bid is accompanied by a current catalog or model specification document for the model number identified below

The bid is accompanied by a copy of the manufacturer's standard warranty as required in the bid specifications

The bid includes the e-verify documentation required by Alabama law

If awarded the bid, a performance bond will be provided upon request

The bid documents include the **Manufacturer's Suggested Retail Price Sheet (MSRP) for the Standard Machine**

Initials

DS

DS

DS

DS

DS

DS

DS

DS

DS

## 100 HP HYDROSTATIC BULLDOZER – OPTION C

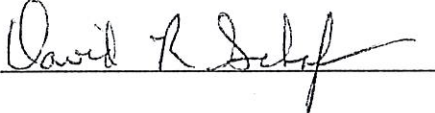
Total Bid Price for Standard Machine: \$ 191,901.00  
(Total Bid Price for Standard Machine Includes Freight Preparation, Delivery and Standard Warranty Costs) \*

Freight Preparation and Delivery: \$ 7,000.00  
(Included in Standard Machine Bid Price)

Manufacturer's Suggested Retail Price for Standard Machine: \$ 221,932.00

Equipment Model #: John Deere 650P

Description: Dozer

Signature of company representative submitting bid: 

Title: Sales Manager

\* **NOTE:** Award will be made based on the total cost of the **Standard Machine**. The total cost of the standard machine is to include the freight preparation, delivery and standard warranty cost. Freight preparation, delivery will be excluded from the total bid price of the standard machine in determining the percentage discount for any available options.

## BID SUBMITTAL FORM: OPTION COST SHEET 100 HP HYDROSTATIC BULLDOZER – OPTION C

By submitting this bid, we agree:

To offer any available options at the percent difference between the Manufacturer's Suggested Retail Price Sheet and the actual bid price on the Standard Machine\*

10%

The bid documents include the Manufacturer's Suggested Retail Price Sheet (MSRP) with **any available Options** for the Standard Machine

10%

Equipment Model #: John Deere 650P

Description: Dozer

Signature of company representative submitting bid: David R Schaf

Title: Sales Manager

**\*Note:** The percent difference between the **Manufacturer's Suggested Retail Price Sheet (MSRP)** for the standard machine as specified by these **Bid Specifications** and the actual price bid by the vendor will be calculated to determine the percentage discount to be applied to any available options. The bid price of the freight preparation, delivery cost shall be excluded in determining the percentage discount to be applied to available options. Any individual county may choose to add any available option to the standard machine at the percentage discount at the time of purchase.

**BID SPECIFICATIONS  
FOR  
100 HP HYDROSTATIC BULLDOZER – OPTION C**

**GENERAL**

These specifications shall be construed as the minimum acceptable standards for a 100 hp hydrostatic low ground pressure bulldozer. Should the manufacturer's current published data or specifications exceed these standards, the manufacturer's standards shall be considered minimum and shall be furnished. All integral parts not specifically mentioned in the scope of these specifications that are necessary to provide a complete working unit shall be furnished. Additionally, the machine offered for bid shall include all standard manufacturer's equipment. The bulldozers must be a new current production model and shall meet all EPA and other applicable standards at the time of manufacture.

The use of specific names and numbers in the specifications is not intended to restrict the bidder or any seller or manufacturer, but is intended solely for the purpose of indicating the type, size and quality of equipment considered best adapted to the uses of counties participating in this joint bid.

**BID SUBMITTAL FORM**

Each bidder must submit his or her bid on the Bid Submittal Form included in the invitation to bid package. All written warranties to be submitted shall be attached to the Bid Submittal Form.

**BID PRICE**

The price bid shall include all destination charges, delivery charges, title fees, rebates, and all other applicable costs and refunds.

**MANUALS**

Each unit shall be provided with one (1) copy of the operator's manual and one (1) copy of the current parts manual. Units will not be accepted for delivery until the manuals as outlined above are received by the purchaser.

**REPLACEMENT PARTS AVAILABILITY**

Parts must be available for 5 years or 7,500 hours of use for the piece of equipment bid. If replacement parts are not delivered within three (3) working days of an order being placed, the bidder will deliver an equivalent machine for the county to use at no cost to the county until such time as the parts are delivered to the county so it can affect repairs to its machine.

**WARRANTY**

Bidders shall submit a copy of the manufacturer's standard warranty. Warranty shall include service response time of maximum of 36 hours within notification by county.

Yes X No \_\_\_  
Page# \_\_\_\_\_  
or  
Attachment X

**ENGINE**

Shall be a turbocharged diesel engine with a displacement of not less than **276 cubic inches**, capable of developing a minimum of **104 net** flywheel horsepower (SAE J1349).

Yes  No   
Page # 22

Engine shall be manufactured by the equipment manufacturer. ✓

Yes  No   
Page # 22

**WEIGHT**

Operating weight with blade, operator, full fuel tank, and ROPS canopy shall not be less than **22,000 lbs.**

Yes  No   
Page # 23

**ELECTRICAL SYSTEM**

Shall be equipped with a minimum **100-amp** alternator.

Yes  No   
Page # 22

**TRANSMISSION**

Shall be equipped with a hydrostatic type transmission. ✓

Yes  No   
Page # 22

**STEERING**

All steering functions must be able to be performed using one hand only.

Yes  No   
Page # 22

**UNDERCARRIAGE**

The tractor shall be equipped with sealed and lubricated tracks. Minimum shoe width shall be **28 inches**. Track sag shall be hydraulically adjusted.

Yes  No   
Page # 23

**BLADE**

The machine shall be equipped with a six-way (pat) blade with a minimum capacity of **2.5 cubic yards**.

Yes  No   
Page # 24

**VANDALISM PROTECTION**

Machine shall be equipped with all standard and optional factory vandalism protection available for the machine bid.

Yes  No   
Page # 26

**Hydraulics**

Minimum pump flow shall be **21 gpm** and minimum system pressure of **3000 psi**.

Yes  No   
Page # 22

**SAFETY EQUIPMENT**

Gauges and indicators shall be provided to monitor critical (fuel level, coolant temperature, powertrain oil temperature, and hydraulic oil temperature) operational systems of the machine and alert the operator when potential problems occur.

Yes  No   
Page # 26-27

Rear view mirror; backup alarm.

Yes  No   
Page # 26-27

Heavy duty hinged radiator guard

Yes  No   
Page # ATTACHMENT

Crankcase guard

Yes  No   
Page # ATTACHMENT

Track center guiding guard

Yes  No   
Page # ATTACHMENT

Pre-cleaner guard

Yes  No   
Page # ATTACHMENT

Front tow hooks

Yes  No   
Page # ATTACHMENT

Heavy duty rear drawbar

Yes  No   
Page # ATTACHMENT

Fire extinguisher

Yes  No   
Page # ATTACHMENT

Water separator

Yes  No   
Page # ATTACHMENT

# 650 P Utility Dozer

27-Dec-2022



Code	Description	QTY	List Price (USD)
55C0T	<p>650 P Utility Dozer</p> <p>650 P Utility Dozer Standard Equipment</p> <p><b>ENGINE:</b> John Deere PowerTech PWS 4.5L meets FT4 / Stage IV emissions 104 SAE Net hp (78kW) Wet Sleeve Cylinder Liners Isolation-Mounted Electronic Fuel Injection Electronic Control with Automatic Engine Protection Vertical Spin-on Engine Oil Filter Vertical Spin-on Dual Stage Fuel Filter Oil-to-Water Engine Oil Cooler Dual Safety Element Dry-Type Air Cleaner, Evacuator Valve Eco Mode 500 hr. Engine Oil Change Interval</p> <p><b>COOLING SYSTEM:</b> Enclosed Safety Fan Guard (Conforms to SAE J1308) Cool-On-Demand Variable Speed Engine Fan Engine Coolant -34 Degree F (-37 Degree C) Coolant Recovery Tank 8.5-Fin/in. Engine Coolant Radiator 9.5-Fin/in. Hydrostatic/Hydraulic Oil-to-Air Cooler 6.4-Fin/in. Air-to-Air Charge Air Cooler Tilt Out Heavy-Duty Perforated Front Grille and Radiator with Hose Protection</p> <p><b>ELECTRICAL:</b> 24 Volt System 110 Amp Alternator for canopy units / 145 Amp Alternator for cab units (2) Batteries with 190 Minute Reserve Capacity, 950 CCA Master Electric Disconnect Switch Bypass Start Safety Cover on Starter Blade-Type Fuses Positive Terminal Battery Covers Pre-wired for Work Lights, Underseat Heater (2) Front Cab Mounted and (2) Rear Cab Mounted Work Lights</p> <p><b>HYDRAULICS:</b> 18 GPM (68 L/Min) Fixed Displacement Hydraulic Gear Pump Three-Function Electro-Hydraulic (EH) Controls with Proportional Angle Function Hydraulic/Hydrostatic Oil Reservoir with Sight Gauge Vertical Spin-on Hydraulic Oil Filter</p> <p><b>POWER TRAIN:</b> Dual Path Hydrostatic Transmission Variable Displacement Piston Pump and Motor Combination Single Lever-Steering, Direction / Speed Control with Counter Rotation and Horn Selectable reverse speed ratios 100%, 115%, 130% or independent of forward ground speed AutoTracking Steering Control 18.6 Gallon (70.4 Liter) Reservoir with Sight Gauge 4000 hr. Oil Change Interval</p>	1	\$231,687.00

Vertical Spin-on Transmission Filter  
 Combined Decelerator/Brake Pedal  
 Automatic Power Management (w/ Manual Override) for Matching Ground Speed  
 Infinite Ground Speed Selection  
 Automatic Straight Ahead Tracking  
 Dynamic Braking (Anti-Free Wheel)  
 Transmission Neutral Lock with Safety Start Switch  
 Automatic Spring Applied, Hydraulically Released Parking Brake  
 Oil to Air Transmission Oil Cooler  
 Triple Reduction Final Drives with Wet Multi-Disk Brakes  
 Primary and Secondary Service Brakes (Conforms to ISO10265)  
 Transmission Diagnostic Ports  
 Selectable Decelerator Mode

**UNDERCARRIAGE:**

61 In. (1549 mm) XLT Track Gauge w/ 7 Bottom Rollers  
 Maximum Life Undercarriage with Moderate Single Grouser Track Shoes  
 Sealed Track Chain  
 Single Flange Rollers  
 Front and Rear Track Guides  
 Solid Sprocket with Bolt-on Sprocket Guards

**OPERATOR STATION:**

JDLink Telematics Service  
 Modular Design ROPS/FOPS Canopy, Isolation Mounted (Conforms to SAE J1040)  
 Left and Right Front Access  
 Front and door wipers and washers (cab)  
 Slip-Resistant Steps and Ergonomically Located Handholds (Conforms to SAE J185)  
 Large Color Display  
 Interior Sound Treatment  
 Air Suspension Seat  
 Operator Presence System  
 Thigh Support  
 Lumbar  
 Backrest Tilt  
 Height, Weight and Fore-Aft  
 Side Console Leg Cushions  
 Adjustable Armrests  
 3 in. (76 mm) Orange Seat Belt with Retractors (Conforms to SAE J386 - ISO 6683)  
 Lunch Box Storage  
 Glove (Storage) Box  
 Cupholders (x2)  
 Built-in Operator's Manual Storage Compartment and Manual  
 12 Volt Power Port  
 Headliner and Floor mat  
 Horn, Electric (Conforms to SAE J994, J1446)

**GAUGES:**

Engine Coolant Temperature  
 Transmission Oil Temperature  
 Hydraulic Oil Temperature  
 Engine Oil Pressure  
 Fuel Level  
 DEF Level

**OVERALL VEHICLE:**

One Piece Unitized Mainframe  
 Front Tow Loop



Code	Description	QTY	List Price (USD)
	Reinforced Engine and Mid-frame Bottom Guards Integral Transmission Guard Perforated Engine Side Shields Heavy-Duty Perforated Front Grille with Hose Protection Environmental Drains 53 Gallon (202 Liter) Fuel Tank with Wide Mouth Fuel Fill Cap and Shut off Valve Reverse Warning Alarm with Guarding (Conforms to SAE J994, J1446) Vandal Protection Locking for: Engine Access Door Rear Service Doors Fuel tank Instrument Panel Hydrostatic/Hydraulic Reservoir - Need wrench to access		
55COT	650 P Utility Dozer	1	\$231,687.00
	DESTINATION AND LANGUAGE		
	Destination Code		Basic Factory Options - Required
	North America		
0202	United States		No Added Cost
	Operator's Manual and Language		Basic Factory Options - Required
0259	English English language for operator's manual and electronic content		No Added Cost
0263	French French language for operator's manual and electronic content		No Added Cost
0287	Spanish Spanish language for operator's manual and electronic content		No Added Cost
	Labels		Basic Factory Options - Required
0351	Translated Text Labels Vehicle labels translated to selected language		No Added Cost

Code	Description	QTY	List Price (USD)
0352	No Text Lables Vehicle labels will be no text		No Added Cost
	ENGINE		
	Engine		Basic Factory Options - Required
4076	John Deere 4.5L - FT4/SV John Deere PowerTech PWS 4.5L (274 cu. in.) 4 Cyl meets FT4/EU Stage V Emissions		No Added Cost
	Engine Fan Drive		Basic Factory Options - Required
4101	Standard Hydraulic Fan Drive		No Added Cost
4102	Automatic Reversing Hydraulic Fan		\$1,509.00
	Engine - Order As Desired		Field Installed Attachments - Optional
8049	Engine Air Precleaner - Rotary		\$501.00
8123	Severe-Duty Fuel Filter		\$899.00
	Cold Start		Field Installed Attachments - Optional
AT211191	110 Volt Engine Coolant Heater (1000 Watt) Average installation, 0.5 hour		\$99.00
	MACHINE CONFIGURATION		

Code	Description	QTY	List Price (USD)
	Dozer Configuration		Basic Factory Options - Required
0401	XLT PAT (Extra Long Track - Power Angle Tilt) 1549 mm (61 In.) track gauge - 7 bottom rollers		No Added Cost
0410	LGP PAT (Low Ground Pressure - Power Angle Tilt) 1753 mm (69 In.) track gauge - 7 bottom rollers		\$4,866.00
	WHEELS/TIRES/TRACKS		
	Track Shoes And Chain		Basic Factory Options - Required
5602	18 In. (457 mm) Moderate Service Shoes - Heavy Duty Undercarriage		(\$7,974.00)
5603	20 In (508 mm) Moderate Service Shoes with Clipped Corners - Heavy Duty Undercarriage		(\$7,764.00)
5605	24 In (610 mm) Moderate Service Shoes - Heavy Duty Undercarriage		(\$7,038.00)
5608	28 In (710 mm) Moderate Service Shoes with Clipped Corners - Heavy Duty Undercarriage		(\$6,599.00)
5702	18 In (457 mm) Moderate Service Shoes - Extended Life Undercarriage		(\$2,299.00)
5703	20 In (508 mm) Moderate Service Shoes with Clipped Corners - Extended Life Undercarriage		(\$1,644.00)
5705	24 In (610 mm) Moderate Service Shoes - Extended Life Undercarriage		(\$989.00)
5708	28 In (710 mm) Moderate Service Shoes with Clipped Corners - Extended Life Undercarriage		(\$334.00)

Code	Description	QTY	List Price (USD)
5802	18 In (450 mm) Moderate Service Shoes - Maximum Life Undercarriage		No Added Cost
5803	20 In (508 mm) Moderate Service Shoes with Clipped Corners - Maximum Life Undercarriage		\$571.00
5805	24 In (610 mm) Moderate Service Shoes - Maximum Life Undercarriage		\$1,193.00
5806	28 In (710 mm) Moderate Service Shoes with Clipped Corners - Maximum Life Undercarriage		\$1,780.00
	Track Guides		Basic Factory Options - Required
5901	Center and Rear Track Guides Recommended for slope and rocky conditions		\$892.00
5902	Rear Track Guides		No Added Cost
5903	Full-Length Rock Guards Includes Rear & Center Track Guides Recommended for slope and rocky conditions and not ideal for use in mud with extreme cold conditions.		\$1,799.00
<b>IMPLEMENTS/ATTACHMENTS</b>			
	Dozer Blade		Basic Factory Options - Required
	Blades or C-Frames are NOT included in base machine price. All C-Frame options include remote C-Frame pivot grease banks and integrally protected hoses with replaceable hoses. All blades have manual adjustable blade pitch.		
7615	PAT Blade - 115 In (2921mm) w/ HD C-Frame - Blade NOT Installed Blade shipped with machine but not installed. 115 In X 37.6 In (2.92 m X .96 m)  Includes: lift, tilt, and angle cylinders with hoses, Cordura coverings, and tilt cylinder cable		No Added Cost
7616	PAT Blade - 124 In (3150mm) w/ HD C-Frame - Blade NOT Installed Requires LGP track frame 124 In X 35.2 In (3.15 m X .894 m)  Blade shipped with machine but not installed.		\$501.00

Code	Description	QTY	List Price (USD)
Includes: lift, tilt, and angle cylinders with hoses, Cordura coverings, and tilt cylinder cable			
7659	PAT Blade - 128 In (3251mm) - Blade NOT Installed Requires LGP track frame 128 In X 37.6 In (3.25 m X .96 m)  Blade shipped with machine but not installed  Includes: lift, tilt, and angle cylinders with hoses, Cordura coverings, and tilt cylinder cable		\$1,897.00
7660	PAT Blade - 105 In (2667mm) w/ HD C-Frame - Blade Factory Installed Requires XLT track frame 105 In X 42 in (2.67 m X 1.06 m)  Factory Installed  Includes: lift, tilt, and angle cylinders with hoses, Cordura coverings, and tilt cylinder cable		(\$378.00)
7611	Less Blade (Includes C-Frame) Does not include attaching pins and hardware.  Includes: lift, tilt, and angle cylinders with hoses, Cordura coverings, and tilt cylinder cable.  Refer to Installation instructions T177581 to attach non-Deere attachments.		(\$5,466.00)
Attachments - Order As Desired		Field Installed Attachments - Optional	
8196	Retrieval Hitch Recommended for pull-type implements (extends 6.1 In / 155 mm)  Not for Use with: Ripper or extended rigid drawbar  Can be used with rear counterweight		\$392.00
8094	Extended Rigid Drawbar With Pin Recommended for pull type implements that require turning clearance (extends 11.3 In / 288 mm)  Not for use with: Retrieval hitch, model 4000 winch  Can be used with rear counterweight		\$529.00
8129	Heavy Duty Parallelogram Ripper With 5 Shank Pockets and (3) Shank/Teeth Requires: 4 function hydraulics  Cannot be used with: retrieval hitch, or extended rigid drawbar		\$11,711.00
8162	Model 4000 Standard Speed Winch - Power In, Freespool Out Requires: Thru-drive hydraulic pump, rear screen  Not for Use with: Ripper, retrieval hitch, or traditional extended rigid drawbar		\$20,019.00

Code	Description	QTY	List Price (USD)
8163	Model 4000 Standard Speed Winch - Power In, Power Out Requires: Thru-drive hydraulic pump, rear screen Not for Use with: Ripper, retrieval hitch, or traditional extended rigid drawbar		\$22,592.00
8161	Model 4000 Low Speed Winch - Power In, Power Out Requires: Thru-drive hydraulic pump, rear screen Not for Use with: Ripper, retrieval hitch, or traditional extended rigid drawbar		\$23,537.00
8091	Extended Rigid Drawbar for Use with Winch For use with model 4000 winch		\$1,123.00
8026	4000 Winch Fairlead, Four Roller Requires: Thru-drive hydraulic pump, rear screen Not for use with: Ripper, retrieval hitch, or traditional extended rigid drawbar		\$4,920.00
8106	Front Counterweight 94 kg. (207 lb.)		\$725.00
PACKAGES			
	Trim Packages		Basic Factory Options - Required
0601	Canopy - Level 1 Trim Includes: Black Exhaust Halogen Lights		No Added Cost
0602	Canopy - Level 2 Trim Includes: Chrome Exhaust LED Lights		\$482.00
0603	Cab - Level 1 Trim Includes: Black Exhaust Halogen Lights AM/FM Radio Standard Highback Seat (Fabric, Air Suspension)		\$15,320.00
0604	Cab - Level 2 Trim Includes: Chrome Exhaust LED Lights		\$18,114.00

Code	Description	QTY	List Price (USD)
	Premium Radio (AM/FM, Bluetooth, Aux, Microphone) Premium Highback Seat (Leather, Heated & Ventilated, Air Suspension)		
	Packages-Order As Desired		Field Installed Attachments - Optional
8104	Fluid Sampling Ports Package Includes color-coded sampling ports to collect oil samples from engine, hydraulic, and hydrostatic systems.		\$292.00
8179	Quick Service Package Includes quick service ports and plumbing for quick evacuation and fill of hydraulic oil, engine oil, and engine coolant.		\$900.00
8500	Cold Weather Package Includes: - Hydrau XR Oil (factory fill, all-season temperatures ranging from -40C to 40C / -40F to 104F) - Ether Start Aid - Engine Block Coolant Heater (110 volt)		\$1,065.00
	HYDRAULICS/CONTROLS		
	Hydraulic Controls		Basic Factory Options - Required
7026	3 Function Manual Hydraulic Controls For Power-Angle-Tilt (PAT) Manual Controls. NOT future upgradeable to 2D Slope Control or SmartGrade™ in the factory by field kit. Does NOT include EZ Grade.		No Added Cost
7031	4 Function Manual Hydraulic Controls For Power-Angle-Tilt (PAT) Manual Controls, includes auxiliary plumbing for ripper. NOT future upgradeable to 2D Slope Control or SmartGrade™ in the factory or by field kit. Does NOT include EZ Grade.		\$960.00
7028	3 Function Electro-Hydraulics (EH) For Power-Angle-Tilt (PAT) EH Controls. Includes touchscreen PDU. Includes EZ Grade. EH controls are required for 2D slope control or SmartGrade™.		\$3,631.00
7030	4 Function Electro-Hydraulics (EH) For Power-Angle-Tilt (PAT) EH Controls. Includes auxiliary plumbing for ripper. Includes touchscreen PDU. Includes EZ Grade. EH controls are required for 2D slope control or future upgrades to SmartGrade™.		\$5,071.00
	HYDRAULIC PUMP		Basic Factory Options - Required

Code	Description	QTY	List Price (USD)
7151	Standard Hydraulic Pump		No Added Cost
7152	Thru-Drive Hydraulic Pump for use with Direct Drive (PTO) Winch For use with Deere 4000S Winch (mechanical drive). Includes external spline for winch or auxiliary pump		\$453.00
	OPERATOR'S STATION		
	Vision System		Basic Factory Options - Required
0950	No Rear Camera		No Added Cost
0951	Rear Camera (Primary Display)		\$2,035.00
0954	Rear Camera - Includes Touchscreen PDU For machine ordered with manual controls. Brings in NGPDisplay		\$2,635.00
	Detection System		Basic Factory Options - Required
1100	No Detection System		No Added Cost
	Operator's Station-Order As Desired		Field Installed Attachments - Optional
8194	Rear Wiper/Washer		\$684.00
8181	Cab step, Bolt-on		\$175.00
8097	External Mounted Rear Attachments Mirror		\$89.00



Code	Description	QTY	List Price (USD)
8030	Fire Extinguisher Bracket		\$89.00
8235	Under-Seat Canopy Heater Requires: Canopy 30,000 BTU		\$1,304.00
	PRECISION TECHNOLOGY SOLUTIONS		
	Connectivity Hardware		Basic Factory Options - Required
183E	JDLink™ Includes integrated cab wiring harness, antenna, and JDLink™ Modem's (MTG). JDLink™ connectivity is enabled separately through the JDLink™ website. Connectivity service is subject to country availability.		No Added Cost
183Q	JDLink™ Satellite Includes integrated cab wiring harness, antenna, JDLink™ Modem's (Cellular MTG & Satellite MTG). JDLink™ connectivity is enabled separately through the JDLink™ website. Connectivity service is subject to country availability.		\$3,000.00
	Display Hardware		Basic Factory Options - Required
1900	No Advanced Display		No Added Cost
	Display Application		Basic Factory Options - Required
1950	No Application		No Added Cost
	Grade Control		Basic Factory Options - Required
2000	No Grade Control		No Added Cost

Code	Description	QTY	List Price (USD)
	When equipped with EH controls includes EZ Grade When equipped with EH controls will allow future upgrades to SmartGrade™ Does NOT allow CAN communication for aftermarket systems. Order 2D slope control (option code 2031) if hydraulic CAN communication is required		
2031	2D Slope Control; SmartGrade Upgradeable Automatic control of mainfall and cross slope, Interface integrated into machines standard 8" touchscreen display Required for aftermarket CAN communication SmartGrade roof harnesses installed Includes EZ Grade Does not include additional advanced display required for future laser control Allows easy future upgrade to SmartGrade™		\$8,800.00
	Smartgrade		Basic Factory Options - Required
2940	No SmartGrade™ Installed		No Added Cost
	Receivers		Basic Factory Options - Required
1880	No Receivers		No Added Cost
	MAINFRAME/STRUCTURES		
	Undercarriage Guarding		Basic Factory Options - Required
6801	Front Idler Guards		No Added Cost
6800	No Front Idler Guards		(\$649.00)
	Mainframe/Structures - Order As Desired		Field Installed Attachments - Optional
8126	Heavy Duty Grille Heavy gauge plate grille, protects lights and fittings on both ends of front hydraulic hoses Suggested for forestry and land clearing applications		\$1,340.00

Code	Description	QTY	List Price (USD)
8188	Rear Screen for Cab Requires: Cab Advised for Winch application		\$1,879.00
8189	Rear Screen for Canopy Requires: Canopy Advised for Winch application		\$1,357.00
MISCELLANEOUS			
	Electrical - Order As Desired		Field Installed Attachments - Optional
8071	Beacon Light		\$295.00
8118	Halogen Light Package		\$39.00
	Miscellaneous - Order As Desired		Field Installed Attachments - Optional
8039	Non-Export Rust Preventive Coating		\$151.00
	G.R.Mfg.		Field Installed Attachments - Optional
	G.R. Manufacturing, Inc. * Kits listed below must be ordered through John Deere. * F.O.B. Trussville, Alabama * All kits include installation instructions * All warranty, repair parts, technical support and assistance, and sales support and assistance will be the responsibility of G.R. Manufacturing, Inc., and will be handled directly between the Dealer and G.R. Manufacturing, Inc. G.R. Manufacturing, Inc. 4800 Commerce Drive Trussville, Alabama 35173 Phone: (800)841-8001 Fax: (205)655-8005		
AT343935	Brush Guard, Full Width, 90 - 97" Blade		\$1,313.00
AT353099	Root Rake for 115 in. blade with S/N 139433 and above		\$6,435.00
AT343936	Brush Guard, Full Width, 105 in.(2667mm) Blade For J-Series crawler S/N 139433 and above.		\$1,500.00

Code	Description	QTY	List Price (USD)
AT369894	Heavy Duty 124 in.(3.15m) Root Rake for S/n above 139433 For 124 in blade crawlers with S/n 139433 and above.		\$8,987.00
AT343939	Heavy Duty Root Rake w/ Brush Guard, 114" For use with 115" blades For crawler S/N 139433 and above Root rake has integral guarding which prohibits use w/ blade equipped w/ brush guard		\$8,912.00
AT343938	Heavy Duty Root Rake w/ Brush Guard, 98" For use with 97" and 105" blades For crawler S/N 139433 and above Root rake has integral guarding which prohibits use w/ blade equipped w/ brush guard		\$8,571.00
AT343937	41" Center Brush Guard for the 450J, 550J, and 650J Fits blades up to 115" length. For J crawlers above S/N 139432, and all K's.		\$840.00
AT364288	Brush Guard, Full Width for 115 in. X 37.6 in. (2.92 m X .96 m) Blade For J-Series crawler S/N 139433 and above.		\$1,500.00
AT369893	Standard Duty 124 in.(3.15m) Root Rake for S/n above 139433 For 124 in blade crawlers with S/n 139433 and above.		\$6,402.00
	Frame Attachment		Field Installed Attachments - Optional
BYT11807	Striker Kit for 850L Ripper		\$1,507.00
AT451157	Front Counterweight, 94 kg. (207 lb.)		\$697.00
AT225884	Reinforcement Blade Kit Installation instructions T182677. Recommended for severe conditions by reinforcing lower blade corners. For straight end bits order parts T182281 and T182280. For cupped end bits order parts T182253 and T182304.		\$98.00
AT310522	C-Frame Steps For use on units S/N 106533 and below. Installation instructions T208092 Average installation, 1.0 hour		\$228.00
BYT12683	Rear Counterweight, 336 Lb. (152.6 Kg) - Field Kit		\$711.00

Code	Description	QTY	List Price (USD)
AT311768	C-Frame Tilt Clevis Kit		\$397.00
	PACCAR Winch Div		Field Installed Attachments - Optional
AT336215	3 Roller Fairlead Kit for Hydraulic Winch For use with PACCAR winch		\$4,210.00
	Winches		Field Installed Attachments - Optional
AT460040	External lines with Accumulator for Power In/Power Out Winches on 450K, 550K and 650K Only		\$1,442.00
	Powertrain		Field Installed Attachments - Optional
AT466342	Severe Duty Fuel Filter kit		\$367.00
	Miscellaneous		Field Installed Attachments - Optional
BYT10484	Universal Monitor		\$422.00
	Operator Environment		Field Installed Attachments - Optional
BYT10774	LED Cab Light Field Kit		\$336.00
	Overall Vehicle		Field Installed Attachments - Optional

Code	Description	QTY	List Price (USD)
BYT10775	LED Grille Light Field Kit		\$242.00

Manufacturer's Suggested List Price shown. Retail prices may vary by dealer. Unless stated otherwise, taxes, freight, setup, delivery and other dealer specific charges not included in the pricing. Options/items noted with anything other than price will have additional costs. Pricing, availability, and specifications subject to change without notice. Special program pricing may be available on certain models. See dealer for details. Prices shown are in U.S. dollars and valid only in the U.S.

## Crawler Dozer / 650

	<b>PAT</b>	
	<b>650P gen A XLT</b>	<b>650P gen A LGP</b>
<b>Engine</b>	<b>Engine</b>	
Manufacturer and Model	John Deere PowerTech PWS 4045	
Non-Road Emission Standards	EPA Final Tier 4/EU Stage IV	
Cylinders	4	
Valves per Cylinder	4	
Displacement	4.5 L (276 cu in.)	
SAE Net Rated Power	78 kW (104 hp) @ 1900 rpm	
Net Peak Torque	492 Nm (363 ft-lb) @ 1400 rpm	
Net Torque Rise	139 Nm (103 ft-lb)	
Net Power Bulge		
Engine Bore and Stroke	106.5 x 127 mm (4.19 x 5.00 in.)	
Aspiration	Turbocharged with Charge Air Cooler	
Air Cleaner	Dual-stage dry tube with tangential unloader	
Lubrication	Pressure system with full-flow spin-on filter and oil-to-water cooler	
Fuel System	High Pressure Common Rail	
Slope Operation, Maximum Angle	45° Fore-Aft, 30° Side Slope	
<b>Cooling</b>	<b>Cooling</b>	
Blower Type	Variable-Speed Suction Fan with Optional Reversing Feature	
	Perforated Engine Side Shields	
	Perforated Front Grille with Hose Protection	
	559 mm (22 in.) 10 Blade	
Engine Coolant Rating	-37 deg.C (-34 deg. F)	
Engine Radiator	8.47 fins per inch	
Hydrostatic Cooler (Oil/Air)	9.5 fins per inch	
Hydraulic Cooler (Oil/Air)	9.5 fins per inch	
Charge Air Cooler (Air/Air)	6.35 fins per inch	
Fuel Cooler (Fuel/Air)	None	
	NA	
<b>Powertrain</b>	<b>Powertrain</b>	
Transmission	<p>Automatic, dual-path, hydrostatic drive; load-sensing feature automatically adjusts speed and power to match changing load conditions; each individually controlled track is powered by a variable-displacement piston pump and variable-displacement motor combination; ground-speed selection buttons on single-lever steering and direction control; independently selectable reverse speed ratios of 100% , 115%, or 130% of forward ground speed; decelerator pedal controls ground speed to stop.</p>	
System Relief Pressure	42 692 kPa (6192 psi)	
Travel Speeds		

Forward and Reverse	8.0 km/h (5.0 mph)
Maximum (optional)	9.7 km/h (6.0 mph)
Filter, Charge Oil	10 micron
Cooling	oil-to-air
<b>Steering</b>	Single-lever steering, direction control, and counterrotation; full power turns and infinitely variable track speeds provide unlimited maneuverability and optimum control; hydrostatic steering eliminates steering clutches and brakes
<b>Final Drives</b>	Triple-reduction final drives mounted independently of track frames and dozer push frames for isolation from shock loads.
Total Ratio	52.13 to 1
<b>Drawbar Pull</b>	
Maximum	152 kN (34 250 lb.)
At 1.9 km/h (1.2 mph)	104 kN (23 330 lb.)
At 3.2 km/h (2.0 mph)	65 kN (14 685 lb.)
<b>Image: Drawbar Pull</b>	
<b>Brakes</b>	Hydrostatic (dynamic) braking stops the machine when the direction/steering control lever is moved to neutral or the decelerator is depressed to the detent
<b>Service Brakes</b>	Hydrostatic (dynamic) braking stops the machine when the direction/steering control lever is moved to neutral or the decelerator is depressed to the detent
Type	Hydraulic
<b>Parking Brakes</b>	Exclusive spring-applied, hydraulically released park brake feature engages wet, multiple-disk brakes automatically whenever the engine stops, whenever the operator depresses the decelerator pedal to the brake position, whenever the unit is in neutral for three seconds (with detected motion), or whenever the park lock lever is in the park position; machine cannot be driven with brake applied, minimizing wear-out or need for adjustment
<b>Hydraulics</b>	
Type	Open center hydraulic system with fixed-displacement gear pump
Pump Displacement	35.4 cc
System Relief Pressure	20 684 kPa (3000 psi)
Differential Pressure	
Filter, Return Oil	8 micron
Maximum Flow @ Unloaded High Idle	71.5 L/m (19 gpm)
Control	Three-function direct-acting T-bar grip
Cooling	oil-to-air
<b>High Flow Pump Option</b>	
Pump Displacement	—
Pump Capacity	—
Maximum Flow @ Unloaded High Idle	—
<b>Electro-Hydraulic Option</b>	
Type	Open center hydraulic system with fixed-displacement gear pump



Control	Three-function electro-hydraulic joystick with proportional roller angle function	
Differential Pressure		
<b>Cylinders</b>	<b>Cylinders</b>	
	Heat treated, chrome-plated, polished cylinder rods, hardened steel (replaceable bushings) pivot pins	
<b>Lift Cylinders</b>		
Bore	80 mm (3.1 in.)	
Rod Diameter	40 mm (1.6 in.)	
Stroke	420 mm (16.5 in.)	
Closed Length	746.5 mm (29.4 in.)	
<b>Angle Cylinders</b>		
Bore	70 mm (2.8 in.)	
Rod Diameter	45 mm (1.8 in.)	
Stroke	412 mm (16.2 in.)	
Closed Length	778 mm (30.6 in.)	
<b>Tilt Cylinders</b>		
Bore	100 mm (3.9 in.)	
Rod Diameter	50 mm (2.0 in.)	
Stroke	94 mm (3.7 in.)	
Closed Length	450.5 mm (17.7 in.)	
<b>Electrical</b>	<b>Electrical</b>	
Voltage	24 volts	
Number of Batteries (12 volt)	2	
Battery Capacity	950 CCA	
Reserve Capacity	190 minutes	
Alternator Rating		
Cab	100 amp	
Canopy	100 amp	
Lights	(4) cab mounted	
Lights (optional)	(8) cab mounted LED	
<b>Undercarriage</b>	<b>Undercarriage</b>	
<b>Tracks</b>	John Deere Undercarriages features large deep-heat-treated components; pins and bushings are sealed for life; rollers and idlers are permanently sealed and lubricated	
Track Gauge	1550 mm (61 in.)	1753 mm (69 in.)
Grouser Width	457 mm (18 in.)	711 mm (28 in.)
Chain	sealed and lubricated	
Shoes, Each Side	40	
Track Rollers, Each Side	7	
Track Length On Ground	2626 mm (103 in.)	
Ground Contact Area	23 998 cm <sup>2</sup> (3720 sq in)	37 336 cm <sup>2</sup> (5787 sq in.)
Ground Pressure	44.1 kPa (6.4 psi)	29.6 kPa (4.3 psi)
Track Pitch	171 mm (6.7 in.)	

<b>Operator Station</b>	<b>Operator Station</b>
	ROPS (ISO 3471 - 2008) and FOPS (ISO 3449 - 2005)
<b>Monitor</b>	<b>Monitor</b>
Alternator, Low Voltage	Indicator
Battery Voltage	Display
Engine Air Filter Restriction	Indicator
Engine Coolant Temperature	Gauge, Indicator, and Audible Alarm
Engine Oil Pressure	Gauge, Indicator, and Audible Alarm
Fan Reversal	Sealed Switch Module (SSM)
FNR / Park Indication	Display
Fuel Level	Gauge and Indicator
DEF Level	Gauge, Indicator, and Audible Alarm
Hourmeter	Display
Hydraulic Oil Filter Restriction	Indicator
Hydraulic Oil Temperature	Indicator and Audible Alarm
No Engine Decel Indicator	Sealed Switch Module (SSM)
Park Brake Engaged	Indicator
Return To Neutral	Indicator
Seat Belt	Indicator
Service Code Check	Indicator
Stop Indicator	Indicator and Audible Alarm
Tachometer	Display
Transmission Oil Charge Pressure	Display, Indicator, and Audible Alarm
Transmission Oil Charge Filter Restriction	Indicator
Transmission Oil Temperature	Indicator and Audible Alarm
Transmission Speed	Display
Water In Fuel	Indicator
<b>Serviceability</b>	<b>Serviceability</b>
	Ground Level Fueling
	Removeable floor plate for access to Hydraulic / Hydrostatic Pumps. Removeable floor plate is standard equipment.
	Integral Bottom Protection, Engine, Mid-Frame and Rear Reinforced Guards
	Hinged Bottom Access Covers (Bolt-On)
	Hydraulic Hose "O" Ring Face Seal Connectors
<b>Diagnostics</b>	
	Hydrostatic Transmission Pressure Sensors read through In-Cab Monitor
	Computerized In-Cab Monitor Information
<b>Fluid Change Interval</b>	
Engine Oil	500 hrs.
Final Drive Oil	1000 hrs.
Hydraulic / Hydrostatic Oil (Common Reservoir)	4000 hrs.
Engine Coolant	6000 hrs.
<b>Filter Service Hours</b>	
Engine Air Filters (Primary and Secondary)	As Required
Cab Fresh Air and Recirculation Filters	As Required

Exhaust Filter	As Required	
Engine Oil Filter	500 hrs.	
Primary Fuel Filter	500 hrs.	
Final Fuel Filter	500 hrs.	
Auxiliary Fuel Filter (If Equipped)	500 hrs.	
DEF Dosing Unit Filter	2000 hrs.	
Fuel Tank Breather	2000 hrs.	
OCV Filter	2000 hrs.	
Hydraulic System Filter	2000 hrs.	
Hydrostatic Transmission Filter	2000 hrs.	
DEF Inline Filter	6000 hrs. or 3 years	
DEF Dosing Unit Filter	4000 hrs. or 3 years	
DEF Tank Breather	As Needed	
<b>Sight Gauges</b>	Hydraulic / Hydrostatic Reservoir	
<b>Refill Capacities</b>		
Fuel Tank with Lockable Cap	202 L (53.45 gal)	
DEF Tank	12.4 L (3.3 gal)	
Cooling System with Recovery Tank	16.9 L (4.5 gal)	
Engine Oil with Filter	14.7 L (15.5 qt)	
Hydraulic / Hydrostatic Oil (Common Reservoir) with Filters	70.5 L (18.6 gal)	
Final Drive (each)	8.5 L (2.3 gal.)	
Inner Final Drive (each)	—	
Outer Planetary (each)	—	
<b>Operating Weights</b>	<b>Operating Weights</b>	
	With standard equipment, rollover protective structures, full fuel tanks, 175-lb (79 kg) operators	
Base Weight	9600 kg (21 165 lb.)	10 98 kg (22 484 lb.)
<b>Optional Components</b>		
Cab with Pressurizer and Heater/ Air Conditioner	361 kg (796 lb.)	
Heater (ROPS canopy)	62 kg (136 lb.)	
Front and Door Screens		
ROPS Canopy	74 kg (163 lb.)	
Cab with Air Conditioner	88 kg (193 lb.)	
Rear Screen		
ROPS Canopy	28 kg (61 lb.)	
Cab with Air Conditioner	50 kg (110 lb.)	
Side Screens		
ROPS Canopy	37 kg (82 lb.)	
Cab with Air Conditioner	60 kg (132 lb.)	
Condenser Guard (cab w/ air conditioner)	53 kg (117 lb.)	
Limb Risers (ROPS canopy and cab)	239 kg (528 lb.)	
Heavy-Duty Grille		
Lift-Cylinder Hose Guards		
Tank Guards		

Front Counterweight	109 kg (240 lb.)	
Rear Counterweight	150 kg (330 lb.)	
Retrieval Hitch	23 kg (50 lb.)	
Drawbar, Extended Rigid	33 kg (72 lb.)	
Winch	652 kg (1437 lb.)	
Winch Fairlead, Four Roller	85 kg (187 lb.)	
Blade Brush Guard		
Blade Trash Rack		
Center Chain Guides	33 kg (73 lb.)	
Full-Length Rock Guards	41 kg (90 lb.)	
Maximum Life Undercarriage	80 kg (175 lb.)	
Final Drive Trash Guards		
Striker Bars, Front		
Striker Bars, Rear		
Pre-Cleaner		
Powered Cab Air		
Rotary Ejector Engine Air		
Track Shoes		
406 mm (16 in.) Heavy Duty	—	—
406 mm (16 in.) Extended Life	—	—
406 mm (16 in.) Max Life	—	—
457 mm (18 in.) Heavy Duty	In base	-464 kg (-1023 lb.)
457 mm (18 in.) Extended Life	16 kg (35 lb.)	-448 kg (-988 lb.)
457 mm (18 in.) Max Life	143 kg (315 lb.)	-321 kg (-708 lb.)
508 mm (20 in.) Heavy Duty	96 kg (212 lb.)	-368 kg (-811 lb.)
508 mm (20 in.) Extended Life	64 kg (141 lb.)	-400 kg (-882 lb.)
508 mm (20 in.) Max Life	192 kg (423 lb.)	-272 kg (-600 lb.)
610 mm (24 in.) Heavy Duty	—	-162 kg (-357 lb.)
610 mm (24 in.) Extended Life	—	-187 kg (-412 lb.)
610 mm (24 in.) Max Life	—	-60 kg (132 lb.)
710 mm (28 in.) Heavy Duty	—	In base
710 mm (28 in.) Extended Life	—	-42 kg (93 lb.)
710 mm (28 in.) Max Life	—	85 kg (187 lb.)
Waste Handler Package plus select optional equipment marked with ▲		
<b>Machine Dimensions</b>	<b>Machine Dimensions</b>	
<b>Image: Dozer Side</b>		
A Overall Height to Roof (includes antenna base and grouser height)	2899 mm ( 9 ft. 6 in.)	
A' Overall Height with Limb Risers (includes grouser height)	2928 mm ( 9 ft. 7 in.)	
B Tread Depth w/ Single-Bar Grouser	49 mm (1.9 in.)	
Moderate Duty	—	
Extreme Duty	—	
C Ground Clearance in dirt	345 mm (13.6 in.)	
<b>Image: Dozer Front</b>		
D Overall Length	4250 mm ( 13 ft. 11 in.)	

D' Overall Length with Standard Drawbar	4250 mm ( 13 ft. 11 in.)	
D'' Overall Length with Extended Drawbar	4414 mm ( 14 ft. 6 in.)	
D''' Overall Length with Winch and Fairlead Rollers	4974 mm ( 16 ft. 4 in.)	
E Blade Lift Height	801 mm (31.5 in.)	
F Blade Digging Depth	538 mm (21.2 in.)	
G Blade Cutting Edge Angle, Adjustable	52 to 60 deg.	
<b>Image: Dozer Top</b>		
<b>Straight</b>		
H Blade Width	2667 mm (105 in.)	2921 mm (115 in.)
I Blade Height	1067 mm (3 ft. 6 in.)	955 mm (3 ft. 2 in.)
SAE Capacity	2.2 m <sup>3</sup> (2.9 cu. yd.)	2.0 m <sup>3</sup> (2.6 cu. yd.)
Weight	608 kg (1340 lb.)	628 kg (1385 lb.)
C-Frame Assembly Weight (w/o blade)	512 kg (1129 lb.)	
J Blade Angle	22.9 deg.	
K Overall Width w/ Blade Angled	2456 mm (8ft. 1 in.)	2689mm (8 ft. 10 in.)
L Blade Tilt	363 mm (14.3 in.)	393 mm (15.5 in.)
M Cut Reach	81 mm (3.2 in.)	-36 mm (-1.4 in.)
N Width Over Track	2007 mm (6 ft. 7 in.)	2464 mm (8 ft. 1 in.)
O Cast Reach	368 mm (14.5 in.)	261 mm (10.3 in.)
<b>Straight (Option)</b>		
H Blade Width	2921 mm (115 in.)	3150 mm (124 in.)
I Blade Height	955 mm (3 ft. 2 in.)	894 mm (2 ft. 11 in.)
SAE Capacity	2.0 m <sup>3</sup> (2.6 cu. yd.)	2.3 m <sup>3</sup> (3.1 cu. yd.)
Weight	628 kg (1385 lb.)	631 kg (1391 lb.)
C-Frame Assembly Weight (w/o blade)	512 kg (1129 lb.)	
J Blade Angle	22.9 deg.	
K Overall Width w/ Blade Angled	2689mm (8 ft. 10 in.)	2899 mm (9 ft. 6 in.)
L Blade Tilt (uses tilt jack)	393 mm (15.5 in.)	429 mm (16.9 in.)
M Cut Reach	193 mm (7.6 in.)	73 mm (2.9 in.)
N Width Over Track	2007 mm (6 ft. 7 in.)	2464 mm (8 ft. 1 in.)
O Cast Reach	490 mm (19.3 in.)	362 mm (14.3 in.)
<b>Straight (Option)</b>		
H Blade Width	—	3251 mm (128in.)
I Blade Height	—	1126 mm (3 ft. 8 in.)
SAE Capacity	—	2.6 m <sup>3</sup> (3.4 cu. yd.)
Weight	—	714 kg (1574 lb.)
C-Frame Assembly Weight (w/o blade)	—	512 kg (1129 lb.)
J Blade Angle	—	22.9 deg.
K Overall Width w/ Blade Angled	—	3019 mm (9 ft. 11 in.)
L Blade Tilt (uses tilt jack)	—	433 mm (17 in.)
M Cut Reach	—	127 mm (5 in.)
N Width Over Track	—	2464 mm (8 ft. 1 in.)
O Cast Reach	—	424 mm (16.7 in.)
<b>Rear Ripper</b>		
<b>Rear Ripper</b>		
<b>Image: Multi-Shank Side</b>		

Image: Multi-Shank Top	
	Multi-shank parallelogram ripper with 5 pockets and 3 shanks
Weight	981 kg (2163 lb.)
P Maximum Penetration	508 mm (20 in.)
Q Maximum Clearance Under Tip	508 mm (20 in.)
R Overall Length, Lowered Position	1450 mm (57 in.)
R' Overall Length, Raised Position	1015 mm (40 in.)
S Overall Beam Width	1830 mm (6 ft. 0 in.)
T Slope Angle (full raise)	40 deg.
U Ripping Width	1670 mm (5ft. 6 in.)
V Distance Between Shanks	806 mm (32 in.)

Tue Sep 27 12:46:19 CDT 2022

K-SERIES  
**CRAWLER DOZERS**



**JOHN DEERE**

450K / 550K / 650K

*TRIED AND*  
**TESTED**







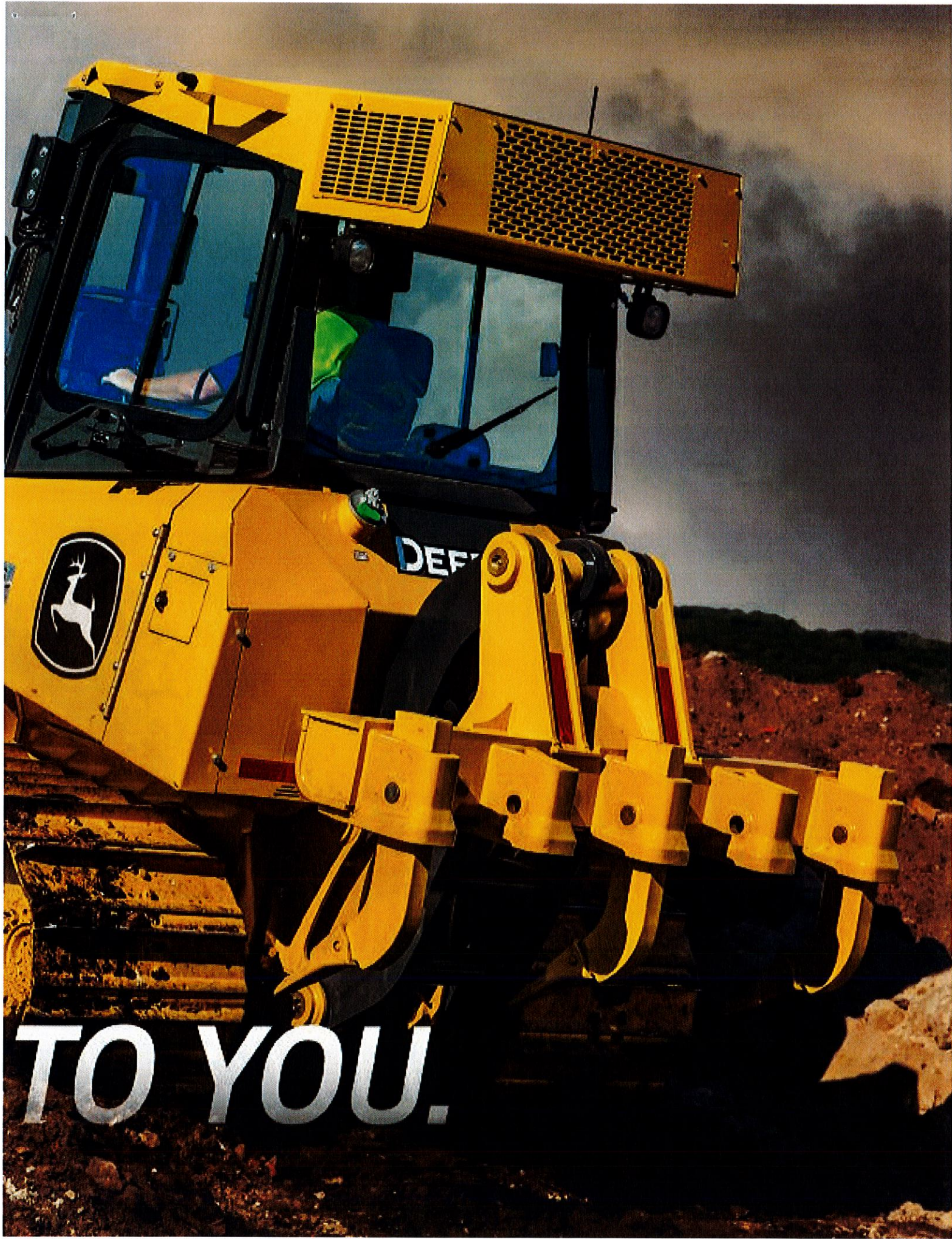
RELIABLE



PRODUCTIVE

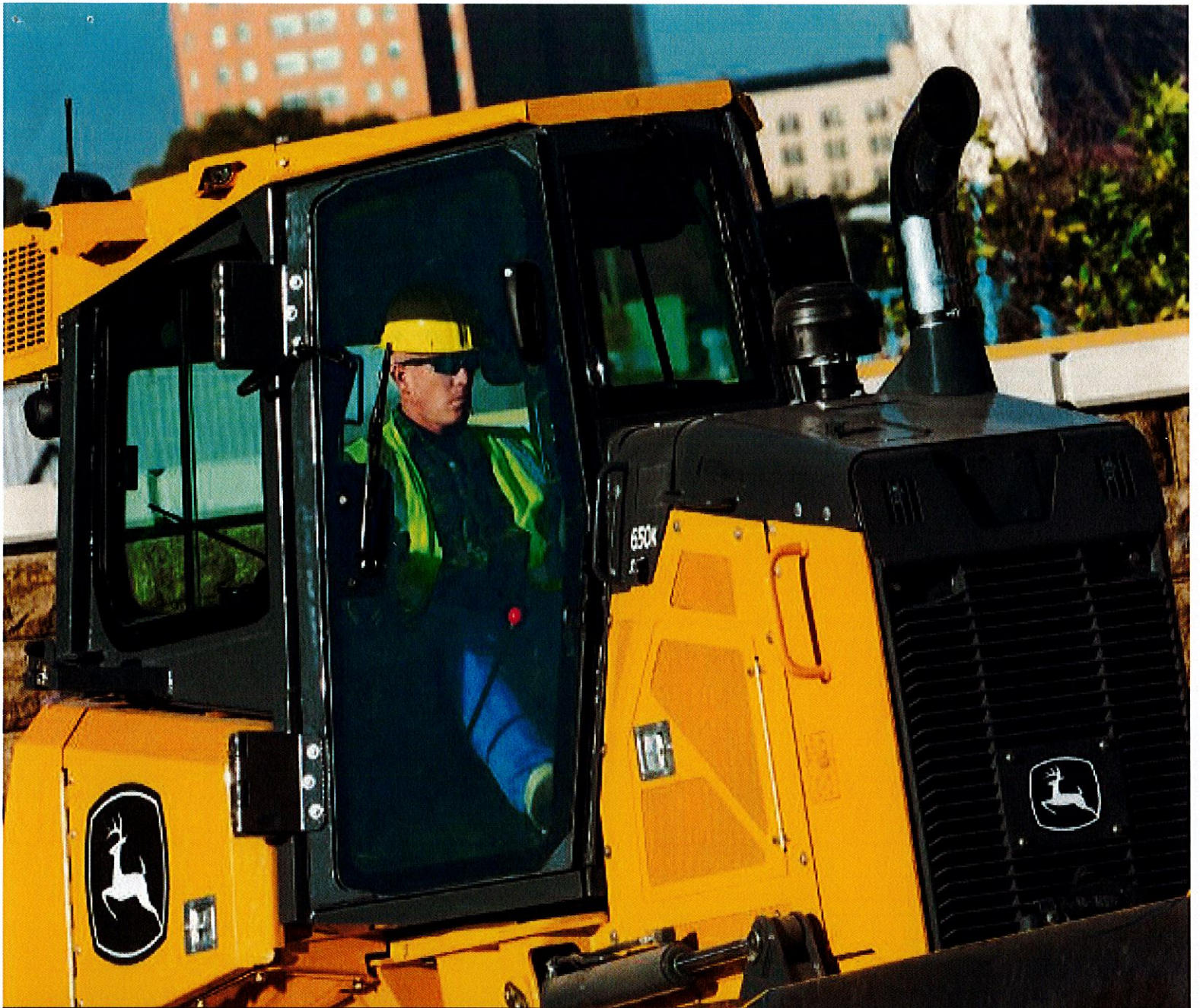
650K

**MORE POWER**



DEERE

**TO YOU.**



## ***HEARING IS BELIEVING.***

When customers talk, we listen. And when we designed our K-Series Dozers, we heard some great input. Your ideas resulted in the 450K that's 16-percent more powerful than its predecessor. Eco mode that regulates engine rpm and the hydrostatic transmission to burn up to 20-percent less fuel than previous models. Total Machine Control for customizable control of a variety of machine functions. And an optional Slope Control system that helps operators create slopes and pads with ease. We believe you'll recognize a lot to like in these proven machines.



# WORKDAY WARRIORS

BEEN THERE, DONE THAT.

John Deere 450K, 550K, and 650K Dozers have a wealth of experience out in the real world. Whether your work is in road-building, construction, mining, or land clearing, these material masters are equipped to help you get some real work done.



**OPTIONAL  
SLOPE CONTROL  
REDUCES GRADING  
EFFORT**

## Go with the flow

Generous hydraulic flow and precise metering deliver quick and powerful blade response while enabling the natural "feel" that makes the most of an operator's grading ability.

## Get good grades

Unlike traditional masted after-market grade-control systems that can be prone to theft, damage, and complicated installation, the purpose-built John Deere 650K SmartGrade™ Dozer combines powerful mastless technology with our track load-sensing system. This highly productive crawler features a fully integrated grade-control system that's easy to set up and run. And it's backed by the Deere dealer network.

## Fuel saver

Standard Eco mode maximizes fuel usage by up to 20 percent compared to conventional torque-converter transmissions, automatically adjusting engine rpm and powertrain settings based on load, without loss of performance.

## Engine tech

EPA Final Tier 4 (FT4)/EU Stage IV diesels meet emission regulations without loss of power or torque. Four-valve head delivers increased intake-air and exhaust-gas flow for each wet-sleeve cylinder, for long-lasting performance.

## Slope control

Optional Slope Control system provides simple-to-use grade control that allows operators to set a desired slope and hold grade through changes in existing terrain. It helps both new and veteran operators hold grade with less effort and without needing an external elevation reference.

## Shake it off

On electrohydraulic (EH)-equipped machines, the blade-shake feature for Power-Angle-Tilt (PAT) blades automatically shakes off dirt at the touch of a button.



**BLADE SHAKE  
REMOVES DEBRIS**

(FOR PAT BLADES ON EH-EQUIPPED MACHINES)



STANDOUT FEATURE

***DOWN  
TO EARTH.***



**COUNTER-ROTATION  
ENABLES  
ON-THE-GO BLADE  
REPOSITIONING**

# **POWERFUL PRODUCTIVITY**

***STILL PUSHING THE ENVELOPE.***

Power turns. Counter-rotating tracks. Power management. Infinitely variable travel speeds. John Deere has been introducing productivity-boosting advantages on our crawler dozers for decades. Our 450K, 550K, and 650K are loaded with performance enhancements, including Eco mode and Total Machine Control (TMC).

## **Fundamentals of management**

Simply set maximum desired ground speed and the power-management system automatically maintains peak engine rpm and power efficiency without stalling or shifting.

## **Turn, turn, turn**

Counter-rotation boosts productivity by enabling an operator to overcome heavy corner loads and quickly reposition the blade on the go. Provides space-saving spot turns, too.

## **Take control**

TMC enables an operator to customize control of decelerator mode and response, forward/reverse ground speed, steering modulation, and forward/reverse speed ratios, and even record machine usage.

## **Infinite flexibility**

Infinitely variable range to 6.0 mph allows total flexibility to match ground speed to the load. Travel can also be varied to fit specific applications, terrain conditions, or operating preferences — and even limited to maximize undercarriage life.

## **Jack of all grades**

When you order your dozer with electrohydraulic (EH) controls, it's grade-control ready, giving you the ability to add the grade-control system of your choice. Options such as Slope Control (on all K-Series models) and SmartGrade (on the 650K) provide in-depth factory integration and are supported by your John Deere dealer.





## ***ON THE JOB AND IN THE ZONE***

*GET DOWN TO BUSINESS.*

You can almost feel fatigue fade inside the roomy, well-appointed cab of a 450K, 550K, or 650K. With their range of customer-inspired amenities, these dozers go quietly about the business of helping operators be comfortably productive.



## CAB-FORWARD DESIGN EXPANDS VISIBILITY

### Forward outlook

Cab-forward design allows a commanding view behind, below, and beyond the blade. Side and rear visibility from inside the cab is open to the surrounding jobsite.

### Raise the bar

Optional electrohydraulic (EH) controls significantly improve blade response, including increased hydraulic-pump capacity on the 450K that enables 50-percent greater blade-raise performance.



### At your fingertips

Sealed-switch module (SSM) allows low-effort control of keyless start and enables exclusive features such as turbocharger cool-down, auto shutdown, and Eco mode. Touchpad security system requires a numeric pass code (when activated) to help prevent unauthorized machine operation.

### Making slopes simple

Optional Slope Control system includes a deluxe LCD color monitor that gives a real-time display of mainfall and cross-slope information, allowing operators to set desired slopes, put the system in automatic, and let it do the work.

### Let the light shine

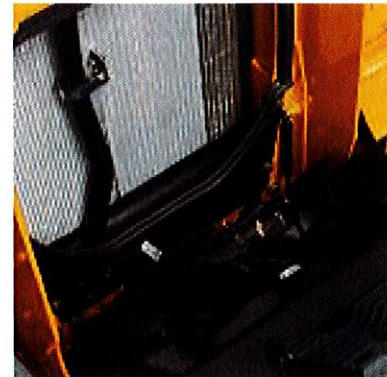
Opt for the 360-degree lighting package to extend your workday beyond daylight.





# ECO MODE OPTIMIZES FUEL ECONOMY

BY UP TO 20% (DEPENDING ON APPLICATION)



## Let's be direct

Direct-drive fan on the 450K and 550K spins up to full speed whenever the engine moves to wide-open throttle. Variable-speed fan on the 650K includes an optional reversing feature that runs only as needed to provide efficient cooling, contain noise, and conserve fuel.

## Power down

Exclusive turbo cool-down increases durability by allowing the engine to idle momentarily prior to shutting down. Auto shutdown turns the engine off after an operator-determined period of machine inactivity, saving warranty hours and fuel.

## Economy is key

Eco mode automatically adjusts engine rpm and hydrostatic (HST) transmission settings based on load while maintaining ground speed, to help optimize fuel economy as much as 20 percent compared to conventional torque-converter transmissions.

## Keep your cool

Transmission temperature is constantly monitored to protect the HST system. If temps get too hot or too cold, a warning light illuminates, and transmission and engine speed are automatically derated to prevent system damage.

## Maximum benefit

Heavy-duty sealed and lubricated undercarriage is built to keep these machines in the field. Available Maximum Life Undercarriage delivers up to twice the bushing life, for extra durability in extremely abrasive conditions. To further reduce maintenance and operating costs, contact your John Deere dealer about our undercarriage wear-assurance programs.



*EXTEND BUSHING  
LIFE WITH MAXIMUM  
LIFE UNDERCARRIAGE  
(OPTIONAL)*

# ***BUILT TO TAKE IT ON***

***RUGGED AND RELIABLE.***

Tough conditions call for strong solutions. Our K-Series Dozers are built to tackle some of the most difficult applications you can put in front of them. When you know how they're built, you'll see what they can do for your operation.

---

# **MORE UPTIME, LESS UPKEEP**

*WE'RE OPEN-MINDED ABOUT EASY MAINTENANCE.*

## **Fluid assets**

Available quick fluid-evacuation system helps speed servicing. 500-hour engine oil and 2,000-hour transmission and hydraulic fluid intervals decrease maintenance downtime and expense.

## **Idle awhile**

Auto-idle decreases engine speed when the dozer is not moving, to help maintain quiet working conditions and conserve precious fuel. Operators can program auto-idle to activate in increments from as soon as five seconds up to 15 minutes.

## **Simplify service**

Serviceability improvements on the 550K and 650K over previous models include new composite fuel tank, redesigned diagnostic lines with pressure sensors, and John Deere transmission control unit software.

## **Get the message**

Exhaust filter operation and status are indicated with on-screen displays and icons. Diagnostic monitor also provides easy-to-understand messages that help speed troubleshooting.



Get valuable insight with

## **PRECISION CONSTRUCTION**

This suite of construction technology delivers **Productivity Solutions** to help you get more done, more efficiently. The in-base JDLink™ subscription provides machine location, utilization data, and alerts to help you maximize productivity and efficiency. Other productivity solutions include grade-management options for multiple machine forms and payload weighing for wheel loaders and articulated dump trucks.

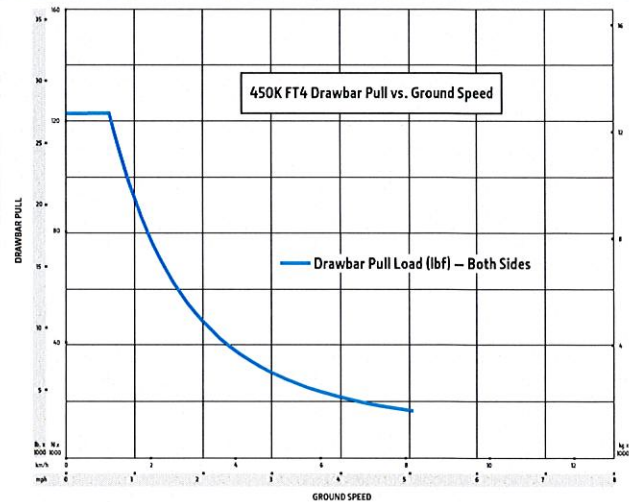
To maximize uptime and lower costs, JDLink also enables **John Deere Connected Support™**. John Deere's centralized Machine Health Monitoring Center analyzes data from thousands of connected machines, identifies trends, and develops recommended actions, called Expert Alerts, to help prevent downtime. Dealers use Expert Alerts to proactively address conditions that may otherwise likely lead to downtime. Your dealer can also monitor machine health and leverage remote diagnostics and programming capability to further diagnose problems and even update machine software without a time-consuming trip to the jobsite.





# 450K SPECIFICATIONS

<b>Engine</b>	<b>450K / 450K LGP</b>
<b>Blade Type</b>	<b>Power-Angle-Tilt (PAT)</b>
<b>Manufacturer and Model</b>	John Deere PowerTech™ PWS 4045
<b>Non-Road Emission Standard</b>	EPA Final Tier 4/EU Stage IV
<b>Displacement</b>	4.5L (276 cu. in.)
<b>SAE Net Rated Power</b>	60 kW (80 hp) at 2,200 rpm
<b>Net Peak Torque</b>	354 Nm (261 ft.-lb.) at 1,400 rpm
<b>Aspiration</b>	Turbocharged with charge-air cooler
<b>Air Cleaner</b>	Dual-stage dry tube with tangential unloader
<b>Cooling</b>	
<b>Type</b>	Blower-type, direct-drive cooling fan
<b>Engine Coolant Rating</b>	-37 deg. C. (-34 deg. F)
<b>Engine Radiator</b>	8.47 fins per in.
<b>Powertrain</b>	
<b>Transmission</b>	Automatic, dual-path, hydrostatic (HST) drive; load-sensing feature automatically adjusts speed and power to match changing load conditions; each individually controlled track is powered by a variable-displacement piston pump and variable-displacement motor combination; ground-speed selection buttons on single-lever steering and direction control; independently selectable reverse speed ratios of 100%, 115%, or 130% of forward ground speed; decelerator pedal controls ground speed to stop
<b>System Relief Pressure</b>	34 887 kPa (5,060 psi)
<b>Travel Speeds</b>	
<b>Forward and Reverse</b>	8.0 km/h (5.0 mph)
<b>Maximum (optional)</b>	9.7 km/h (6.0 mph)
<b>Steering</b>	Single-lever steering, direction control, and counter-rotation; full power turns and infinitely variable track speeds provide unlimited maneuverability and optimum control; HST steering eliminates steering clutches and brakes
<b>Final Drives</b>	Triple-reduction final drives mounted independently of track frames and dozer push frames for isolation from shock loads
<b>Total Ratio</b>	48.4 to 1
<b>Drawbar Pull</b>	
<b>Maximum</b>	122 kN (27,500 lb.)
<b>At 1.9 km/h (1.2 mph)</b>	80 kN (17,900 lb.)
<b>At 3.2 km/h (2.0 mph)</b>	48 kN (10,900 lb.)
<b>Brakes</b>	
<b>Service</b>	HST (dynamic) braking stops the machine when the direction/steering control lever is moved to neutral or the decelerator is depressed to the detent
<b>Parking</b>	Exclusive spring-applied, hydraulically released park-brake feature engages whenever the engine stops, the operator depresses the decelerator pedal to the brake position, the unit is in neutral for 3 seconds (with detected motion), or the park-lock lever is in the park position; machine cannot be driven with brake applied, minimizing wearout or need for adjustment
<b>Hydraulics</b>	
<b>Type</b>	Open-center hydraulic system with fixed-displacement gear pump
<b>Pump Displacement</b>	36.4 cc
<b>System Relief Pressure</b>	20 684 kPa (3,000 psi)
<b>Maximum Flow at Unloaded High Idle</b>	80 L/m (21 gpm)
<b>Control</b>	3-function direct-acting T-bar joystick with push-button angle function



While general information, pictures, and descriptions are provided, some illustrations and text may include product options and accessories NOT AVAILABLE in all regions, and in some countries products and accessories may require modifications or additions to ensure compliance with the local regulations of those countries.

# 450K SPECIFICATIONS

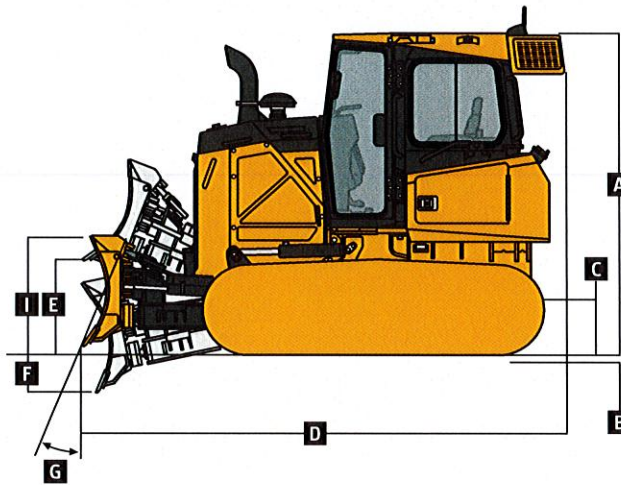


<b>Electrical</b>	<b>450K / 450K LGP</b>	
<b>Blade Type</b>	PAT	
<b>Voltage</b>	24 volts	
<b>Capacity</b>		
Battery	950 CCA	
Reserve	190 min.	
<b>Alternator Rating</b>		
Cab	100 amp	
Canopy	100 amp	
<b>Lights</b>	Grille mounted (2), rear mounted (2), and rear reflectors (2)	
<b>Undercarriage</b>	<b>450K</b>	<b>450K LGP</b>
<b>Tracks</b>	John Deere DuraTrax™ features large deep-heat-treated components; pins and bushings are sealed for life; rollers and idlers are permanently sealed and lubricated; full-length track-frame covers reduce material buildup and ease cleaning	
Track Gauge	1448 mm (57 in.)	1651 mm (65 in.)
Grouser Width	406 mm (16 in.)	610 mm (24 in.)
Chain	Sealed and lubricated	Sealed and lubricated
Shoes, Each Side	40 standard and Extended Life / 37 Maximum Life	40 standard and Extended Life / 37 Maximum Life
Track Rollers, Each Side	6	6
Track Length on Ground	2184 mm (86 in.)	2184 mm (86 in.)
Ground Contact Area	17 755 cm <sup>2</sup> (2,752 sq. in.)	26 632 cm <sup>2</sup> (4,128 sq. in.)
Ground Pressure	43.9 kPa (6.4 psi)	31.3 kPa (4.5 psi)
Track Pitch	160 mm (6.3 in.) standard / 171 mm (6.7 in.) Maximum Life	160 mm (6.3 in.) standard / 171 mm (6.7 in.) Maximum Life
<b>Operator Station</b>	<b>450K / 450K LGP</b>	
ROPS (ISO 3471 – 2008) and FOPS (ISO 3449 – 2005)		
<b>Serviceability</b>		
<b>Refill Capacities</b>		
Fuel Tank With Lockable Cap	202 L (53.45 gal.)	
Diesel Exhaust Fluid (DEF) Tank	11.8 L (3.1 gal.)	
Cooling System With Recovery Tank	21.1 L (5.6 gal.)	
Engine Oil With Filter	19 L (20 qt.)	
Hydraulic/HST Oil (common reservoir) With Filters	100 L (26.42 gal.)	
Final Drive (per tractor)	17 L (4.6 gal.)	
<b>Operating Weights</b>	<b>450K</b>	<b>450K LGP</b>
<i>Base Weight (with standard equipment, rollover protective structure [ROPS], full fuel tank, and 79-kg [175 lb.] operator)</i>	7959 kg (17,510 lb.)	8522 kg (18,752 lb.)
<b>Optional Components</b>		
Cab With Pressurizer and Heater/ Air Conditioner	306 kg (675 lb.)	306 kg (675 lb.)
ROPS Canopy, Heater	12 kg (26 lb.)	12 kg (26 lb.)
ROPS Canopy and Cab		
Front and Door Screens	81 kg (179 lb.)	81 kg (179 lb.)
Rear Screen	34 kg (76 lb.)	34 kg (76 lb.)
Side Screens	43 kg (94 lb.)	43 kg (94 lb.)
Limb Risers (ROPS canopy and cab)	95 kg (209 lb.)	95 kg (209 lb.)
Counterweight		
Front	109 kg (240 lb.)	109 kg (240 lb.)
Rear	150 kg (330 lb.)	150 kg (330 lb.)
Retrieval Hitch	23 kg (50 lb.)	23 kg (50 lb.)
Drawbar, Extended Rigid	33 kg (72 lb.)	33 kg (72 lb.)
Winch	652 kg (1,437 lb.)	652 kg (1,437 lb.)
Fairlead, 4 Roller	85 kg (187 lb.)	85 kg (187 lb.)
Full-Length Rock Guards	117 kg (257 lb.)	131 kg (288 lb.)
Maximum Life Undercarriage	88 kg (193 lb.)	132 kg (290 lb.)
Track Shoes		
406 mm (16 in.)	In base	—
610 mm (24 in.)	—	In base

While general information, pictures, and descriptions are provided, some illustrations and text may include product options and accessories NOT AVAILABLE in all regions, and in some countries products and accessories may require modifications or additions to ensure compliance with the local regulations of those countries.

# 450K

Machine Dimensions	450K / 450K LGP
<b>Blade Type</b>	<b>Power-Angle-Tilt (PAT)</b>
A Overall Height to Roof	2799 mm (9 ft. 2 in.)
B Tread Depth With Single-Bar Grouser	49 mm (1.9 in.)
C Ground Clearance in Dirt	329 mm (13 in.)
D Overall Length	4016 mm (158 in.) (13 ft. 2 in.)
E Blade Lift Height	772 mm (30.4 in.)
F Blade Digging Depth	528 mm (20.8 in.)
G Blade Cutting-Edge Angle, Adjustable	52 to 60 deg.



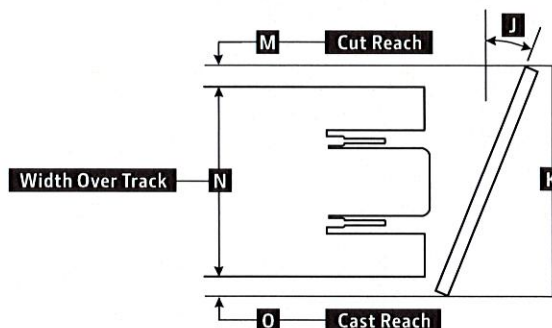
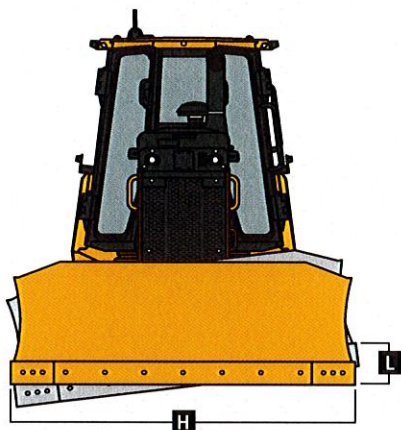
450K / 450K LGP WITH POWER-ANGLE-TILT (PAT) BLADE

Machine Dimensions (continued)	450K	450K LGP
<b>Straight</b>		
H Blade Width	2464 mm (97 in.) (8 ft. 1 in.)	2921 mm (115 in.) (9 ft. 7 in.)
I Blade Height	955 mm (3 ft. 2 in.)	955 mm (3 ft. 2 in.)
SAE Capacity	1.6 m <sup>3</sup> (2.1 cu. yd.)	2.0 m <sup>3</sup> (2.6 cu. yd.)
Weight	494 kg (1,090 lb.)	628 kg (1,385 lb.)
C-Frame Assembly Weight (without blade)	330 kg (727 lb.)	330 kg (727 lb.)
J Blade Angle	25.4 deg.	25.4 deg.
K Overall Width With Blade Angled	2225 mm (7 ft. 4 in.)	2639 mm (8 ft. 8 in.)
L Blade Tilt (uses tilt jack)	338 mm (13.3 in.)	399 mm (15.7 in.)
M Cut Reach	56 mm (2.2 in.)	58.4 mm (2.2 in.)
N Width Over Track	1854 mm (6 ft. 1 in.)	2261 mm (7 ft. 5 in.)
O Cast Reach	318 mm (12.5 in.)	320 mm (12.6 in.)
<b>Straight (option)</b>		
H Blade Width	2921 mm (115 in.) (9 ft. 7 in.)	3150 mm (124 in.) (10 ft. 4 in.)
I Blade Height	955 mm (3 ft. 2 in.)	894 mm (35 in.)
SAE Capacity	2.0 m <sup>3</sup> (2.6 cu. yd.)	1.9 m <sup>3</sup> (2.5 cu. yd.)
Weight	628 kg (1,385 lb.)	631 kg (1,391 lb.)
C-Frame Assembly Weight (without blade)	330 kg (727 lb.)	330 kg (727 lb.)
J Blade Angle	25.4 deg.	25.4 deg.
K Overall Width With Blade Angled	2639 mm (8 ft. 8 in.)	2845 mm (9 ft. 4 in.)
L Blade Tilt (uses tilt jack)	399 mm (15.7 in.)	429 mm (16.9 in.)
M Cut Reach	262 mm (10.3 in.)	163 mm (6.4 in.)
N Width Over Track	1854 mm (6 ft. 1 in.)	2261 mm (7 ft. 5 in.)
O Cast Reach	523 mm (20.6 in.)	424 mm (17.0 in.)

While general information, pictures, and descriptions are provided, some illustrations and text may include product options and accessories NOT AVAILABLE in all regions, and in some countries products and accessories may require modifications or additions to ensure compliance with the local regulations of those countries.

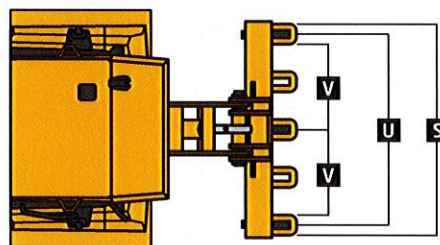
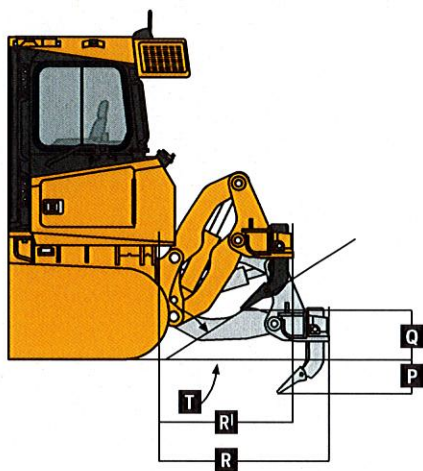
Machine Dimensions (continued)

450K / 450K LGP



Rear Ripper 450K / 450K LGP

<b>Blade Type</b>	<b>PAT</b>
Multi-shank parallelogram ripper with 5 pockets and 3 shanks	
<b>Weight</b>	981 kg (2,163 lb.)
<b>P Maximum Penetration</b>	508 mm (20 in.)
<b>Q Maximum Clearance Under Tip</b>	508 mm (20 in.)
<b>R Overall Length, Lowered Position</b>	1450 mm (57 in.) (4 ft. 9 in.)
<b>R<sup>1</sup> Overall Length, Raised Position</b>	1015 mm (40 in.) (3 ft. 4 in.)
<b>S Overall Beam Width</b>	1830 mm (6 ft. 0 in.)
<b>T Slope Angle (full raise)</b>	40 deg.
<b>U Ripping Width</b>	1670 mm (5 ft. 6 in.)
<b>V Distance Between Shanks</b>	806 mm (32 in.)



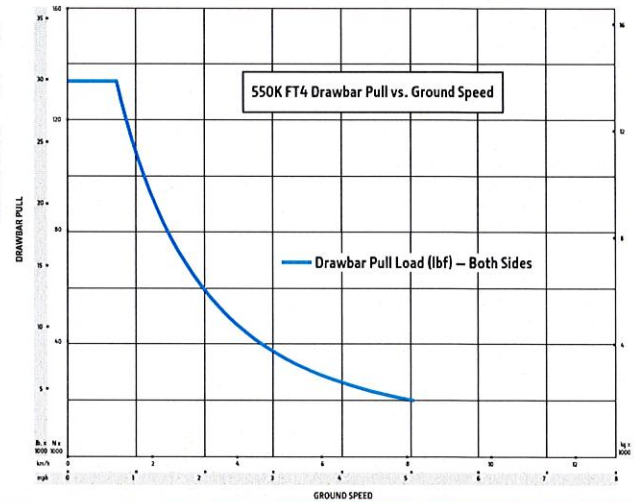
While general information, pictures, and descriptions are provided, some illustrations and text may include product options and accessories NOT AVAILABLE in all regions, and in some countries products and accessories may require modifications or additions to ensure compliance with the local regulations of those countries.





# 550K SPECIFICATIONS

<b>Engine</b>	<b>550K / 550K LGP</b>
<b>Blade Type</b>	<b>Power-Angle-Tilt (PAT)</b>
Manufacturer and Model	John Deere PowerTech™ PWS 4045
Non-Road Emission Standard	EPA Final Tier 4/EU Stage IV
Displacement	4.5L (276 cu. in.)
SAE Net Rated Power	69 kW (92 hp) at 2,200 rpm
Net Peak Torque	420 Nm (310 ft.-lb.) at 1,400 rpm
Aspiration	Turbocharged with charge-air cooler
Air Cleaner	Dual-stage dry tube with tangential unloader
<b>Cooling</b>	
Type	Blower-type, direct-drive cooling fan
Engine Coolant Rating	-37 deg. C. (-34 deg. F)
Engine Radiator	8.47 fins per in.
<b>Powertrain</b>	
<b>Transmission</b>	Automatic, dual-path, hydrostatic (HST) drive; load-sensing feature automatically adjusts speed and power to match changing load conditions; each individually controlled track is powered by a variable-displacement piston pump and variable-displacement motor combination; ground-speed selection buttons on single-lever steering and direction control; independently selectable reverse speed ratios of 100%, 115%, or 130% of forward ground speed; decelerator pedal controls ground speed to stop
System Relief Pressure	38 741 kPa (5,619 psi)
Travel Speeds	
Forward and Reverse	8.0 km/h (5.0 mph)
Maximum (optional)	9.7 km/h (6.0 mph)
<b>Steering</b>	Single-lever steering, direction control, and counter-rotation; full power turns and infinitely variable track speeds provide unlimited maneuverability and optimum control; HST steering eliminates steering clutches and brakes
<b>Final Drives</b>	Triple-reduction final drives mounted independently of track frames and dozer push frames for isolation from shock loads
Total Ratio	48.4 to 1
<b>Drawbar Pull</b>	
Maximum	134 kN (30,000 lb.)
At 1.9 km/h (1.2 mph)	94 kN (21,100 lb.)
At 3.2 km/h (2.0 mph)	58 kN (13,100 lb.)
<b>Brakes</b>	
Service	HST (dynamic) braking stops the machine when the direction/steering control lever is moved to neutral or the decelerator is depressed to the detent
Parking	Exclusive spring-applied, hydraulically released park-brake feature engages wet, multiple-disc brakes automatically whenever the engine stops, the operator depresses the decelerator pedal to the brake position, the unit is in neutral for 3 seconds (with detected motion), or the park-lock lever is in the park position; machine cannot be driven with brake applied, minimizing wearout or need for adjustment
<b>Hydraulics</b>	
Type	Open-center hydraulic system with fixed-displacement gear pump
Pump Displacement	36.4 cc
System Relief Pressure	20 684 kPa (3,000 psi)
Maximum Flow at Unloaded High Idle	80 L/m (21 gpm)
Control	3-function direct-acting T-bar joystick with push-button angle function



While general information, pictures, and descriptions are provided, some illustrations and text may include product options and accessories NOT AVAILABLE in all regions, and in some countries products and accessories may require modifications or additions to ensure compliance with the local regulations of those countries.

# 550K SPECIFICATIONS

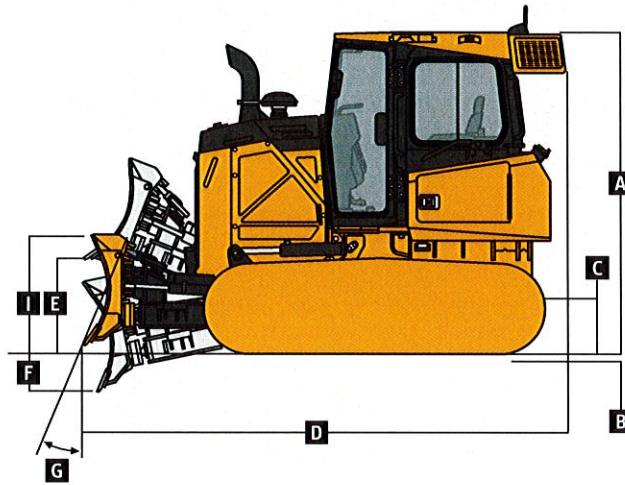


<b>Electrical</b>	<b>550K / 550K LGP</b>	
Blade Type	PAT	
Voltage	24 volts	
Capacity		
Battery	950 CCA	
Reserve	190 min.	
Alternator Rating		
Cab	100 amp	
Canopy	100 amp	
Lights	Grille mounted (2), rear mounted (2), and rear reflectors (2)	
<b>Undercarriage</b>	<b>550K</b>	<b>550K LGP</b>
<b>Tracks</b>	John Deere DuraTrax™ features large deep-heat-treated components; pins and bushings are sealed for life; rollers and idlers are permanently sealed and lubricated; full-length track-frame covers reduce material buildup and ease cleaning	
Track Gauge	1549 mm (61 in.)	1753 mm (69 in.)
Grouser Width	457 mm (18 in.)	610 mm (24 in.)
Chain	Sealed and lubricated	Sealed and lubricated
Shoes, Each Side	40 standard and Extended Life / 37 Maximum Life	40 standard and Extended Life / 37 Maximum Life
Track Rollers, Each Side	6	6
Track Length on Ground	2184 mm (86 in.)	2184 mm (86 in.)
Ground Contact Area	19 974 cm <sup>2</sup> (3,096 sq. in.)	26 632 cm <sup>2</sup> (4,128 sq. in.)
Ground Pressure	44.1 kPa (6.4 psi)	35.2 kPa (5.1 psi)
Track Pitch	160 mm (6.3 in.) standard and Extended Life / 171 mm (6.7 in.) Maximum Life	
<b>Operator Station</b>	<b>550K / 550K LGP</b>	
ROPS (ISO 3471 – 2008) and FOPS (ISO 3449 – 2005)		
<b>Serviceability</b>		
<b>Refill Capacities</b>		
Fuel Tank With Lockable Cap	202 L (53.45 gal.)	
Diesel Exhaust Fluid (DEF) Tank	11.8 L (3.1 gal.)	
Cooling System With Recovery Tank	21.1 L (5.6 gal.)	
Engine Oil With Filter	19 L (20 qt.)	
Hydraulic/HST Oil (common reservoir) With Filters	100 L (26.42 gal.)	
Final Drive (per tractor)	17 L (4.6 gal.)	
<b>Operating Weights</b>	<b>550K</b>	<b>550K LGP</b>
Base Weight (with standard equipment, rollover protective structure [ROPS], full fuel tank, and 79-kg [175 lb.] operator)	8981 kg (19,758 lb.)	9544 kg (21,000 lb.)
<b>Optional Components</b>		
Cab With Pressurizer and Heater/Air Conditioner	306 kg (675 lb.)	306 kg (675 lb.)
ROPS Canopy, Heater	39 kg (85 lb.)	39 kg (85 lb.)
ROPS Canopy and Cab		
Front and Door Screens	81 kg (179 lb.)	81 kg (179 lb.)
Rear Screen	34 kg (76 lb.)	34 kg (76 lb.)
Side Screens	43 kg (94 lb.)	43 kg (94 lb.)
Limb Risers (ROPS canopy and cab)	95 kg (209 lb.)	95 kg (209 lb.)
Counterweight		
Front	109 kg (240 lb.)	109 kg (240 lb.)
Rear	150 kg (330 lb.)	150 kg (330 lb.)
Retrieval Hitch	23 kg (50 lb.)	23 kg (50 lb.)
Drawbar, Extended Rigid	33 kg (72 lb.)	33 kg (72 lb.)
Winch	652 kg (1,437 lb.)	652 kg (1,437 lb.)
Fairlead, 4 Roller	85 kg (187 lb.)	85 kg (187 lb.)
Full-Length Rock Guards	128 kg (282 lb.)	128 kg (282 lb.)
Maximum Life Undercarriage	258 kg (569 lb.)	258 kg (569 lb.)
Track Shoes		
457 mm (18 in.)	In base	—
610 mm (24 in.)	—	In base

While general information, pictures, and descriptions are provided, some illustrations and text may include product options and accessories NOT AVAILABLE in all regions, and in some countries products and accessories may require modifications or additions to ensure compliance with the local regulations of those countries.

# 550K

Machine Dimensions	550K / 550K LGP
<b>Blade Type</b>	<b>Power-Angle-Tilt (PAT)</b>
<b>A</b> Overall Height to Roof	2799 mm (9 ft. 2 in.)
<b>B</b> Tread Depth With Single-Bar Grouser	49 mm (1.9 in.)
<b>C</b> Ground Clearance in Dirt	329 mm (13 in.)
<b>D</b> Overall Length	4016 mm (158 in.) (13 ft. 2 in.)
<b>E</b> Blade Lift Height	772 mm (30.4 in.)
<b>F</b> Blade Digging Depth	523 mm (20.6 in.)
<b>G</b> Blade Cutting-Edge Angle, Adjustable	52 to 60 deg.



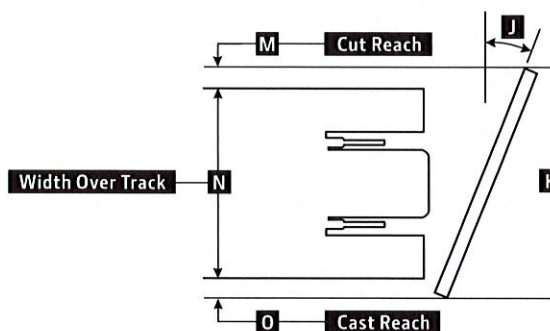
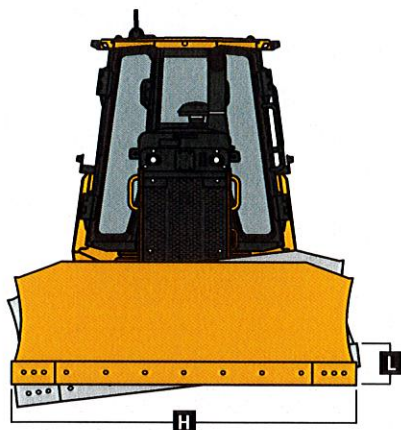
550K / 550K LGP WITH POWER-ANGLE-TILT (PAT) BLADE

Machine Dimensions (continued)	550K	550K LGP
<b>Straight</b>		
<b>H</b> Blade Width	2667 mm (105 in.) (8 ft. 9 in.)	2921 mm (115 in.) (9 ft. 7 in.)
<b>I</b> Blade Height	955 mm (3 ft. 2 in.)	955 mm (3 ft. 2 in.)
SAE Capacity	1.8 m <sup>3</sup> (2.4 cu. yd.)	2.0 m <sup>3</sup> (2.6 cu. yd.)
Weight	603 kg (1,330 lb.)	628 kg (1,385 lb.)
C-Frame Assembly Weight (without blade)	399 kg (879 lb.)	399 kg (879 lb.)
<b>J</b> Blade Angle	22.2 deg.	22.2 deg.
<b>K</b> Overall Width With Blade Angled	2469 mm (8 ft. 1 in.)	2705 mm (8 ft. 11 in.)
<b>L</b> Blade Tilt (uses tilt jack)	363 mm (14.3 in.)	399 mm (15.7 in.)
<b>M</b> Cut Reach	117 mm (4.6 in.)	56 mm (2.2 in.)
<b>N</b> Width Over Track	2007 mm (6 ft. 7 in.)	2362 mm (7 ft. 9 in.)
<b>O</b> Cast Reach	345 mm (18.3 in.)	287 mm (11.0 in.)
<b>Straight (option)</b>		
<b>H</b> Blade Width	2921 mm (115 in.) (9 ft. 7 in.)	3150 mm (124 in.) (10 ft. 4 in.)
<b>I</b> Blade Height	955 mm (3 ft. 2 in.)	894 mm (35 in.)
SAE Capacity	2.0 m <sup>3</sup> (2.6 cu. yd.)	1.9 m <sup>3</sup> (2.5 cu. yd.)
Weight	628 kg (1,385 lb.)	631 kg (1,391 lb.)
C-Frame Assembly Weight (without blade)	399 kg (879 lb.)	399 kg (879 lb.)
<b>J</b> Blade Angle	22.2 deg.	22.2 deg.
<b>K</b> Overall Width With Blade Angled	2705 mm (8 ft. 11 in.)	2916 mm (9 ft. 7 in.)
<b>L</b> Blade Tilt (uses tilt jack)	399 mm (15.7 in.)	429 mm (16.9 in.)
<b>M</b> Cut Reach	234 mm (9.2 in.)	163 mm (6.4 in.)
<b>N</b> Width Over Track	2007 mm (6 ft. 7 in.)	2464 mm (8 ft. 1 in.)
<b>O</b> Cast Reach	465 mm (18.3 in.)	391 mm (15.4 in.)

While general information, pictures, and descriptions are provided, some illustrations and text may include product options and accessories NOT AVAILABLE in all regions, and in some countries products and accessories may require modifications or additions to ensure compliance with the local regulations of those countries.

## Machine Dimensions (continued)

550K / 550K LGP



### Rear Ripper

550K / 550K LGP

**Blade Type**

**PAT**

Multi-shank parallelogram ripper with 5 pockets and 3 shanks

**Weight**

981 kg (2,163 lb.)

**P** Maximum Penetration

508 mm (20 in.)

**Q** Maximum Clearance Under Tip

508 mm (20 in.)

**R** Overall Length, Lowered Position

1450 mm (57 in.) (4 ft. 9 in.)

**R<sup>l</sup>** Overall Length, Raised Position

1015 mm (40 in.) (3 ft. 4 in.)

**S** Overall Beam Width

1830 mm (6 ft. 0 in.)

**T** Slope Angle (full raise)

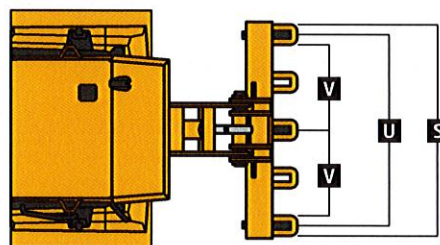
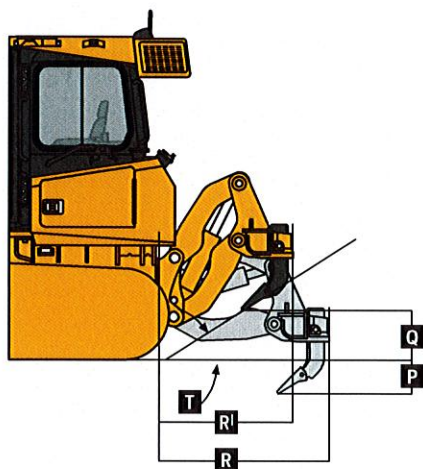
40 deg.

**U** Ripping Width

1670 mm (5 ft. 6 in.)

**V** Distance Between Shanks

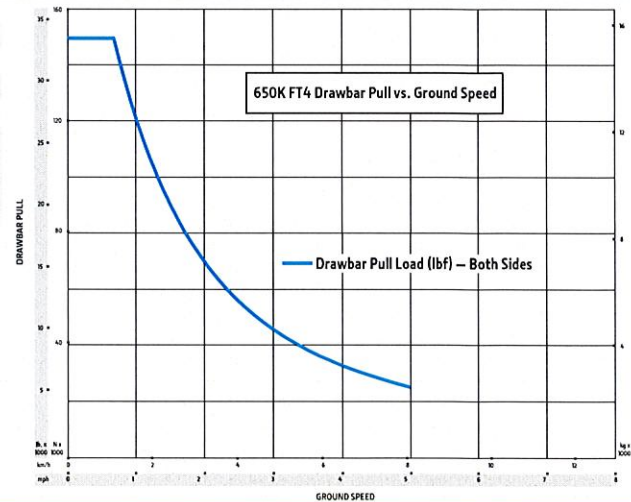
806 mm (32 in.)





# 650K SPECIFICATIONS

<b>Engine</b>	<b>650K XLT / 650K LGP</b>
<b>Blade Type</b>	<b>Power-Angle-Tilt (PAT)</b>
<b>Manufacturer and Model</b>	John Deere PowerTech™ PWS 4045
<b>Non-Road Emission Standard</b>	EPA Final Tier 4/EU Stage IV
<b>Displacement</b>	4.5L (276 cu. in.)
<b>SAE Net Rated Power</b>	78 kW (104 hp) at 2,200 rpm
<b>Net Peak Torque</b>	475 Nm (350 ft.-lb.) at 1,400 rpm
<b>Aspiration</b>	Turbocharged with charge-air cooler
<b>Air Cleaner</b>	Dual-stage dry tube with tangential unloader
<b>Cooling</b>	
<b>Type</b>	Variable-speed suction fan with optional reversing feature
<b>Engine Coolant Rating</b>	-37 deg. C. (-34 deg. F)
<b>Engine Radiator</b>	10 fins per in.
<b>Powertrain</b>	
<b>Transmission</b>	Automatic, dual-path, hydrostatic (HST) drive; load-sensing feature automatically adjusts speed and power to match changing load conditions; each individually controlled track is powered by a variable-displacement piston pump and variable-displacement motor combination; ground-speed selection buttons on single-lever steering and direction control; independently selectable reverse speed ratios of 100%, 115%, or 130% of forward ground speed; decelerator pedal controls ground speed to stop
<b>System Relief Pressure</b>	42 692 kPa (6,192 psi)
<b>Travel Speeds</b>	
Forward and Reverse	8.0 km/h (5.0 mph)
Maximum (optional)	9.7 km/h (6.0 mph)
<b>Steering</b>	Single-lever steering, direction control, and counter-rotation; full power turns and infinitely variable track speeds provide unlimited maneuverability and optimum control; HST steering eliminates steering clutches and brakes
<b>Final Drives</b>	Triple-reduction final drives mounted independently of track frames and dozer push frames for isolation from shock loads
<b>Total Ratio</b>	52.13 to 1
<b>Drawbar Pull</b>	
<b>Maximum</b>	148 kN (33,600 lb.)
At 1.9 km/h (1.2 mph)	108 kN (24,200 lb.)
At 3.2 km/h (2.0 mph)	69 kN (15,600 lb.)
<b>Brakes</b>	
<b>Service</b>	HST (dynamic) braking stops the machine when the direction/steering control lever is moved to neutral or the decelerator is depressed to the detent
<b>Parking</b>	Exclusive spring-applied, hydraulically released park-brake feature engages wet, multiple-disc brakes automatically whenever the engine stops, the operator depresses the decelerator pedal to the brake position, the unit is in neutral for 3 seconds (with detected motion), or the park-lock lever is in the park position; machine cannot be driven with brake applied, minimizing wearout or need for adjustment
<b>Hydraulics</b>	
<b>Type</b>	Open-center hydraulic system with fixed-displacement gear pump
<b>Pump Displacement</b>	36.4 cc
<b>System Relief Pressure</b>	20 684 kPa (3,000 psi)
<b>Maximum Flow at Unloaded High Idle</b>	80 L/m (21 gpm)
<b>Control</b>	3-function direct-acting T-bar joystick with push-button angle function



While general information, pictures, and descriptions are provided, some illustrations and text may include product options and accessories NOT AVAILABLE in all regions, and in some countries products and accessories may require modifications or additions to ensure compliance with the local regulations of those countries.

# 650K SPECIFICATIONS

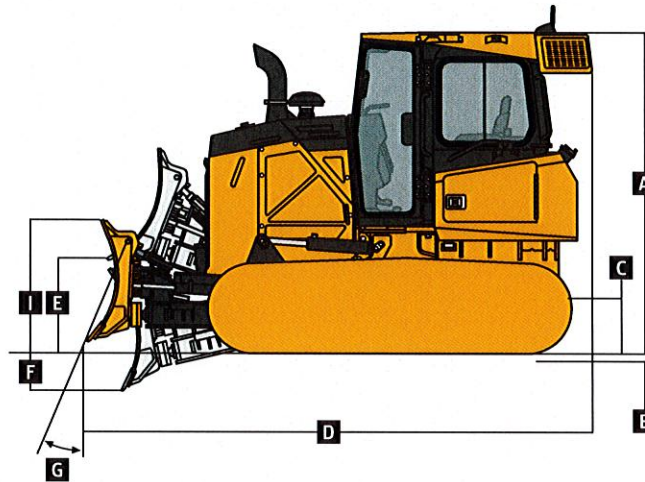


Electrical		650K XLT / 650K LGP
Blade Type		PAT
Voltage		24 volts
Capacity		
Battery		950 CCA
Reserve		190 min.
Alternator Rating		
Cab		100 amp
Canopy		100 amp
Lights		Grille mounted (2), rear mounted (2), and rear reflectors (2)
Undercarriage		650K XLT                      650K LGP
Tracks	John Deere DuraTrax™ features large deep-heat-treated components; pins and bushings are sealed for life; rollers and idlers are permanently sealed and lubricated; full-length track-frame covers reduce material buildup and ease cleaning	
Track Gauge	1550 mm (61 in.)	1750 mm (69 in.)
Grouser Width	457 mm (18 in.)	710 mm (28 in.)
Chain	Sealed and lubricated	Sealed and lubricated
Shoes, Each Side	40	40
Track Rollers, Each Side	7	7
Track Length on Ground	2349 mm (92 in.)	2349 mm (92 in.)
Ground Contact Area	21 479 cm <sup>2</sup> (3,329 sq. in.)	33 412 cm <sup>2</sup> (5,179 sq. in.)
Ground Pressure	44.1 kPa (6.4 psi)	29.6 kPa (4.3 psi)
Track Pitch	171 mm (6.7 in.)	171 mm (6.7 in.)
Operator Station		650K XLT / 650K LGP
ROPS (ISO 3471 – 2008) and FOPS (ISO 3449 – 2005)		
Serviceability		
Refill Capacities		
Fuel Tank With Lockable Cap	202 L (53.45 gal.)	
Diesel Exhaust Fluid (DEF) Tank	11.8 L (3.1 gal.)	
Cooling System With Recovery Tank	21.1 L (5.6 gal.)	
Engine Oil With Filter	19 L (20 qt.)	
Hydraulic/HST Oil (common reservoir) With Filters	100 L (26.42 gal.)	
Final Drive (per tractor)	17 L (4.6 gal.)	
Operating Weights		650K XLT                      650K LGP
<i>Base Weight (with standard equipment, rollover protective structure [ROPS], full fuel tank, and 79-kg [175 lb.] operator</i>		9691 kg (21,320 lb.)                      10 156 kg (22,343 lb.)
Optional Components		
Cab With Pressurizer and Heater	306 kg (675 lb.)	306 kg (675 lb.)
Air Conditioner		
ROPS Canopy, Heater	39 kg (85 lb.)	39 kg (85 lb.)
ROPS Canopy and Cab		
Front and Door Screens	81 kg (179 lb.)	81 kg (179 lb.)
Rear Screen	34 kg (76 lb.)	34 kg (76 lb.)
Side Screens	43 kg (94 lb.)	43 kg (94 lb.)
Limb Risers (ROPS canopy and cab)	104 kg (229 lb.)	104 kg (229 lb.)
Counterweight		
Front	109 kg (240 lb.)	109 kg (240 lb.)
Rear	150 kg (330 lb.)	150 kg (330 lb.)
Retrieval Hitch	23 kg (50 lb.)	23 kg (50 lb.)
Drawbar, Extended Rigid	33 kg (72 lb.)	33 kg (72 lb.)
Winch	652 kg (1,437 lb.)	652 kg (1,437 lb.)
Fairlead, 4 Roller	85 kg (187 lb.)	85 kg (187 lb.)
Center Chain Guides	41 kg (90 lb.)	41 kg (90 lb.)
Full-Length Rock Guards	98 kg (216 lb.)	98 kg (216 lb.)
Maximum Life Undercarriage	182 kg (400 lb.)	182 kg (400 lb.)
Track Shoes		
457 mm (18 in.)	In base	—
510 mm (20 in.)	83 kg (183 lb.)	–344 kg (–760 lb.)
610 mm (24 in.)	—	–172 kg (–380 lb.)
710 mm (28 in.)	—	In base

While general information, pictures, and descriptions are provided, some illustrations and text may include product options and accessories NOT AVAILABLE in all regions, and in some countries products and accessories may require modifications or additions to ensure compliance with the local regulations of those countries.

# 650K

Machine Dimensions	650K XLT / 650K LGP
<b>Blade Type</b>	<b>Power-Angle-Tilt (PAT)</b>
A Overall Height to Roof	2762 mm (9 ft. 1.25 in.)
B Tread Depth With Single-Bar Grouser	49 mm (1.9 in.)
C Ground Clearance in Dirt	341 mm (13.5 in.)
D Overall Length	4255 mm (168 in.) (14 ft. 0 in.)
E Blade Lift Height	818 mm (32.2 in.)
F Blade Digging Depth	500 mm (19.7 in.)
G Blade Cutting-Edge Angle, Adjustable	52 to 60 deg.

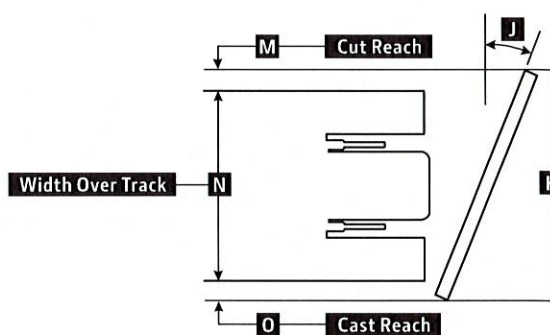
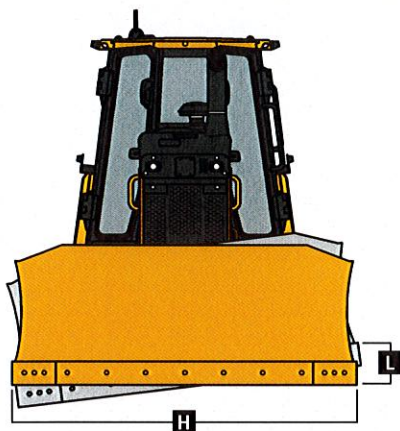


650K XLT / 650K LGP WITH POWER-ANGLE-TILT (PAT) BLADE

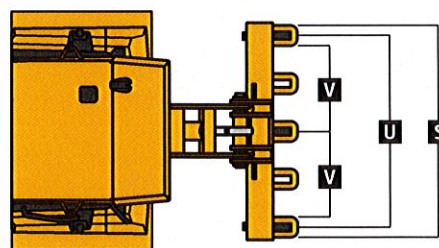
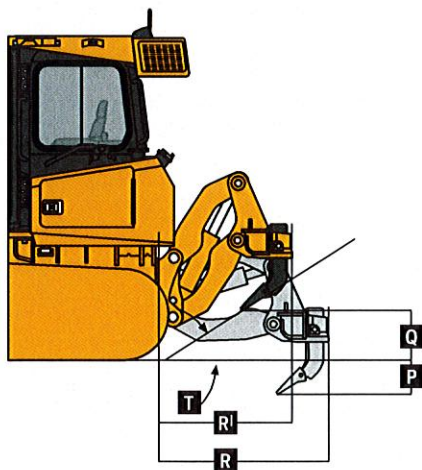
Machine Dimensions (continued)	650K XLT	650K LGP
<b>Straight</b>		
H Blade Width	2667 mm (105 in.) (8 ft. 9 in.)	2921 mm (115 in.) (9 ft. 7 in.)
I Blade Height	1067 mm (3 ft. 6 in.)	955 mm (3 ft. 2 in.)
SAE Capacity	2.2 m <sup>3</sup> (2.9 cu. yd.)	2.0 m <sup>3</sup> (2.6 cu. yd.)
Weight	603 kg (1,330 lb.)	628 kg (1,385 lb.)
C-Frame Assembly Weight (without blade)	399 kg (879 lb.)	399 kg (879 lb.)
J Blade Angle	22.2 deg.	22.2 deg.
K Overall Width With Blade Angled	2469 mm (8 ft. 1 in.)	2705 mm (8 ft. 11 in.)
L Blade Tilt (uses tilt jack)	363 mm (14.3 in.)	399 mm (15.7 in.)
M Cut Reach	117 mm (4.6 in.)	5 mm (0.2 in.)
N Width Over Track	2007 mm (6 ft. 7 in.)	2464 mm (8 ft. 1 in.)
O Cast Reach	345 mm (13.6 in.)	236 mm (9.3 in.)
<b>Straight (option)</b>		
H Blade Width	2921 mm (115 in.) (9 ft. 7 in.)	3150 mm (124 in.) (10 ft. 4 in.)
I Blade Height	955 mm (3 ft. 2 in.)	894 mm (35 in.)
SAE Capacity	2.0 m <sup>3</sup> (2.6 cu. yd.)	1.9 m <sup>3</sup> (2.5 cu. yd.)
Weight	628 kg (1,385 lb.)	631 kg (1,391 lb.)
C-Frame Assembly Weight (without blade)	399 kg (879 lb.)	399 kg (879 lb.)
J Blade Angle	22.2 deg.	22.2 deg.
K Overall Width With Blade Angled	2705 mm (8 ft. 11 in.)	2916 mm (9 ft. 7 in.)
L Blade Tilt (uses tilt jack)	399 mm (15.7 in.)	429 mm (16.9 in.)
M Cut Reach	234 mm (9.2 in.)	112 mm (4.4 in.)
N Width Over Track	2007 mm (6 ft. 7 in.)	2464 mm (8 ft. 1 in.)
O Cast Reach	465 mm (18.3 in.)	340 mm (13.4 in.)

While general information, pictures, and descriptions are provided, some illustrations and text may include product options and accessories NOT AVAILABLE in all regions, and in some countries products and accessories may require modifications or additions to ensure compliance with the local regulations of those countries.

Machine Dimensions (continued)	650K XLT	650K LGP
<b>Blade Type</b>	<b>PAT</b>	<b>PAT</b>
<b>Straight (option)</b>		
H Blade Width	3150 mm (124 in.) (10 ft. 4 in.)	3251 mm (128 in.) (10 ft. 8 in.)
I Blade Height	894 mm (35 in.)	955 mm (3 ft. 2 in.)
SAE Capacity	1.9 m <sup>3</sup> (2.5 cu. yd.)	2.2 m <sup>3</sup> (2.9 cu. yd.)
Weight	631 kg (1,391 lb.)	694 kg (1,530 lb.)
C-Frame Assembly Weight (without blade)	399 kg (879 lb.)	399 kg (879 lb.)
J Blade Angle	22.2 deg.	22.2 deg.
K Overall Width With Blade Angled	2916 mm (9 ft. 7 in.)	3010 mm (9 ft. 11 in.)
L Blade Tilt (uses tilt jack)	429 mm (16.9 in.)	445 mm (17.5 in.)
M Cut Reach	340 mm (13.4 in.)	157 mm (6.2 in.)
N Width Over Track	2007 mm (6 ft. 7 in.)	2464 mm (8 ft. 1 in.)
O Cast Reach	569 mm (22.4 in.)	569 mm (22.4 in.)



Rear Ripper	650K XLT / 650K LGP
Multi-shank parallelogram ripper with 5 pockets and 3 shanks	
Weight	981 kg (2,163 lb.)
P Maximum Penetration	508 mm (20 in.)
Q Maximum Clearance Under Tip	508 mm (20 in.)
R Overall Length, Lowered Position	1450 mm (57 in.) (4 ft. 9 in.)
R <sup>I</sup> Overall Length, Raised Position	1015 mm (40 in.) (3 ft. 4 in.)
S Overall Beam Width	1830 mm (6 ft. 0 in.)
T Slope Angle (full raise)	40 deg.
U Ripping Width	1670 mm (5 ft. 6 in.)
V Distance Between Shanks	806 mm (32 in.)



While general information, pictures, and descriptions are provided, some illustrations and text may include product options and accessories NOT AVAILABLE in all regions, and in some countries products and accessories may require modifications or additions to ensure compliance with the local regulations of those countries.



# Additional equipment

Key: ● Standard ▲ Optional or special See your John Deere dealer for further information.

450K	550K	650K	Engine
●	●	●	Meets EPA Final Tier 4/EU Stage IV emissions
●	●	●	John Deere PowerTech™ PWS 4045 4.5L engine
●	●	●	Turbocharged and air-to-air aftercooled
●	●	●	Electronic control with automatic engine protection
●	●	●	Eco mode
●	●	●	Dual safety element dry-type air cleaner, evacuator valve
●	●	●	Exhaust filter, under hood, with vertical stack
●	●	●	Engine glow-plug starting system
●	●	●	Automatic turbo cool-down timer
●	●	●	Programmable auto-idle and auto shutdown
●	●	●	Wet-sleeve cylinder liners
●	●	●	Remote-mounted fuel filters with automatic electronic priming
▲	▲	▲	Engine coolant heater, 110 volts
●	●	●	Exhaust stack, black
▲	▲	▲	Exhaust stack, chrome
▲	▲	▲	Rotary ejector engine air pre-cleaner
▲	▲	▲	Severe-duty fuel filter and water separator with heating element
●	●	●	100-amp alternator, cab and canopy
<b>Cooling</b>			
●	●		Direct-drive cooling fan, blower type
		●	Hydraulically driven cooling fan, variable-speed suction type
		▲	Automatic, programmable reversing-fan-drive fan
●	●	●	Engine cooling rated -37 deg. C (-34 deg. F)
●	●	●	Enclosed safety fan guard (conforms to SAE J1308 and ISO3457)
●	●	●	Perforated engine side shields
●	●	●	Heavy-duty perforated grille
●	●	●	Heavy-duty, trash-resistant radiator and high-ambient cooling package
▲	▲	▲	Extreme-duty perforated grille with light guard
<b>Powertrain</b>			
●	●	●	Dual-path hydrostatic (HST) transmission
●	●	●	Reverse-speed ratios (100%, 115%, and 130% presets)
●	●	●	Remote diagnostic test ports
●	●	●	Operator-selectable decelerator function (hydrostats and engine or hydrostats only)

450K	550K	650K	Powertrain (continued)
●	●	●	Wet, multi-disc parking brake
●	●	●	Full power turns with infinitely variable track speed
●	●	●	Single-lever steering with counter-rotate function
●	●	●	HST (dynamic) service brakes
●	●	●	Automatic cold-weather transmission warmup system
●	●	●	Automatic transmission derating for exceeded system temperatures
●	●	●	2,000-hour vertical spin-on transmission filter
<b>Hydraulic System</b>			
●	●	●	Open-center fixed-displacement hydraulic gear pump
●	●	●	3-spool manual control valve for Power-Angle-Tilt (PAT)
▲	▲	▲	3-spool electrohydraulic (EH) control valve for PAT
▲	▲	▲	4-spool manual-control valve for PAT
●	●	●	4-spool EH control valve for PAT with single auxiliary
▲	▲	▲	2,000-hour vertical spin-on hydraulic filter
▲	▲	▲	Drive-through hydraulic pump for use with winch
▲	▲	▲	Grade-control-ready electrohydraulics
▲	▲	▲	Slope Control system
		▲	SmartGrade™ 3D mastless grade control
<b>Overall Vehicle</b>			
●	●	●	Front tow loop, bolt-on
●	●	●	Reinforced engine and mid-frame bottom guards
●	●	●	Integral transmission guard
●	●	●	Vandal protection: Engine access door / Side tank access doors / Fuel tank / Instrument panel / Transmission reservoir / Hydraulic reservoir
▲	▲	▲	Fluid-sample valves
▲	▲	▲	Quick-service ports
▲	▲	▲	Forestry limb risers (sweeps)
▲	▲	▲	Trimble-ready interface package
▲	▲	▲	Topcon-ready interface package
▲	▲	▲	Leica-ready interface package
<b>Attachments</b>			
▲	▲	▲	Counterweight, front, 94 kg (207 lb.)
▲	▲	▲	Counterweight, rear, 150 kg (330 lb.)
▲	▲	▲	Retrieval hitch with pin
▲	▲	▲	Extended rigid drawbar with pin for pull-type implements
▲	▲	▲	Drawbar, extended for winch (with or without fairlead)

While general information, pictures, and descriptions are provided, some illustrations and text may include product options and accessories NOT AVAILABLE in all regions, and in some countries products and accessories may require modifications or additions to ensure compliance with the local regulations of those countries.

Net engine power is with standard equipment including air cleaner, exhaust system, alternator, and cooling fan at test conditions specified per ISO9249. Specifications and design subject to change without notice. Wherever applicable, specifications are in accordance with SAE standards. Except where otherwise noted, these specifications are based on units with standard equipment, rollover protective structures (ROPS), full fuel tanks, and 79-kg (175 lb.) operators.

# Additional equipment *(continued)*

Key: ● Standard ▲ Optional or special See your John Deere dealer for further information.

450K	550K	650K	Attachments <i>(continued)</i>
▲	▲	▲	Rear ripper, parallelogram, 3 shank, 5 pocket
▲	▲	▲	Winch, John Deere 4000, power in/free spool out OR power out
▲	▲	▲	Winch, John Deere 4000, low speed, power in/free spool out OR power out
▲	▲	▲	4-roller fairlead for winch
▲	▲	▲	Root-rake blade attachment

Undercarriage			
●	●	●	Full-length, smooth-surface track frame covers
●	●	●	Chain guides, front and rear
●	●	●	Maximum Life undercarriage system with SC-2™ bushings
▲	▲	▲	Extended Life undercarriage with SC-2 bushings
▲	▲	▲	Heavy-duty sealed and lubricated undercarriage
▲	▲	▲	Full-length rock guards
●	●	●	Double-flange rollers

STD	LGP	450K Shoes	
●		●	406-mm (16 in.) moderate service
	●	●	610-mm (24 in.) moderate service

STD	LGP	550K Shoes	
●	▲	●	457-mm (18 in.) moderate service
	●	●	610-mm (24 in.) moderate service

XLT	LGP	650K Shoes	
●	▲	●	457-mm (18 in.) moderate service
▲	▲	▲	510-mm (20 in.) moderate service with clipped corners
		▲	610-mm (24 in.) moderate service
		●	710-mm (28 in.) moderate service with clipped corners

Canopy	Cab	Operator's Station / Electrical	
●	●	●	Retractable seat belts, 76 mm (3 in.) (conform to SAE J386)
●	●	●	Accessories: Convex wide-angle interior rearview mirror / Thigh cushions (2) / Cup holders (2)
●	●	●	Power port (cab includes two power ports)
●	●	●	Lockable dash-mounted storage compartment
		●	Air conditioner and heater, 24,000 Btu
		●	Tinted glass
		●	Dome light

Canopy	Cab	Operator's Station / Electrical <i>(continued)</i>	
	●	●	Wipers, intermittent with washers: front window and left and right doors
	▲	▲	Rear wiper and washer
▲	▲	▲	Full screens
▲	▲	▲	Rear window screen
●		●	Standard seat, vinyl with heavy-duty air suspension
	●	●	Standard seat, fabric with heavy-duty air suspension
	▲	▲	Deluxe seat, heated with heavy-duty air suspension and leather bolstered
▲	●	●	Under-seat heater
	●	●	AM/FM/Weather Band (WB) radio with USB and auxiliary port and MP3 player front plug-in
▲	▲	▲	Premium radio with Bluetooth®, AM/FM/WB radio with USB and auxiliary port, remote auxiliary, and remote USB port
	●	●	Radio-area storage slot
●	●	●	Lockable master electrical disconnect switch
●	●	●	Multifunction/multi-language LCD monitor: Analog display (fuel level, coolant temperature, and engine oil pressure) / Digital display (engine rpm, charge pressure, hours, DPF soot level, and transmission direction/speed range)
▲	▲	▲	Multifunction/multi-language 178-mm (7 in.) color LCD monitor for Slope Control: Tachometer, hour meter, transmission direction and speed (forward/reverse), exhaust filter status, ambient temperature, and clock
●	●	●	Built-in diagnostics: Diagnostic-code details / Sensor values / Calibrations / Individual circuit tester
●	●	●	Keyless start with multiple security modes
●	●	●	Battery, dual, 24 volts
●	●	●	Lights: LED, grille-mounted front (2) and halogen, cab-mounted rear (2)
▲	▲	▲	LED lights: grille-mounted front (2), cab-mounted front (2), and rear (2)
	▲	▲	External-mounted attachment mirror
●	●	●	JDLink™ wireless communication system (available in specific countries; see your dealer for details)

While general information, pictures, and descriptions are provided, some illustrations and text may include product options and accessories NOT AVAILABLE in all regions, and in some countries products and accessories may require modifications or additions to ensure compliance with the local regulations of those countries.

Net engine power is with standard equipment including air cleaner, exhaust system, alternator, and cooling fan at test conditions specified per ISO9249. Specifications and design subject to change without notice. Wherever applicable, specifications are in accordance with SAE standards. Except where otherwise noted, these specifications are based on units with standard equipment, rollover protective structures (ROPS), full fuel tanks, and 79-kg (175 lb.) operators.



**JOHN DEERE**





## STANDARD WARRANTY FOR NEW JOHN DEERE CONSTRUCTION, COMPACT CONSTRUCTION (CCE) FORESTRY, AND UTILITY PRODUCTS – US & CANADA

- **Construction & Forestry Products:** 12 months/unlimited hours (whichever occurs first) Full Machine Standard Warranty
- **Compact Construction Equipment (CCE) Products:** 24 months or 2000 hours (whichever occurs first) Full Machine Standard Warranty
- **C&E Series Pull-Type Scrapers:** 6 months Full Machine Standard Warranty
- **DC & DE Pull-Type Scrapers:** 12 months Full Machine Standard Warranty
- **Scraper Tractors:** 24 Months or 2000 Hours (whichever occurs first) Full Machine Standard Warranty
- **Forestry Attachments:** 12 Months or 2000 Hours (whichever occurs first) Full Machine Standard Warranty

The "Standard Warranty" is part of the warranty protection package available from John Deere Construction & Forestry Company (John Deere Limited in Canada) ("John Deere") to purchasers of new John Deere products ("product"):

**STANDARD Warranty** is John Deere's standard new product warranty, described in this document, provided at no additional charge to the purchaser.

**EXTENDED Warranty** is a separate repair contract made available by John Deere for purchasers who wish to complement their Standard Warranty coverage. Complete Extended Warranty details, including coverage options and limitations, are set forth in the Application for Extended Warranty, which is available from authorized John Deere dealers.

**STRUCTURAL Warranty** applies to certain structural components as listed below and as described in this document.

**FACTORY-INSTALLED UNDERCARRIAGE Warranty** applies to certain undercarriage components as listed below and as described in this document.

### A. STANDARD WARRANTY - GENERAL PROVISIONS

John Deere will repair or replace, at its option, any parts (except those specified below) of a new John Deere product that, as delivered to the original retail purchaser(s), are defective in material or workmanship. Performance of this warranty will be free of charge for parts and labor, except as otherwise stated below. Standard Warranty applies only to purchases from John Deere and authorized John Deere dealers and, except as otherwise provided in the next sentence and section L below, is extended only to the original retail purchaser of the product. Remaining Standard Warranty applicable to a used John Deere product is transferred to a subsequent purchaser of the product only if the subsequent purchaser requests a transfer from an authorized John Deere dealer before the product's Standard Warranty expires. Coverage begins on the date of delivery of the product to the original retail purchaser. For purposes of this warranty, a product that has been rented, used for demonstration purposes for 150 or more hours, or otherwise used prior to its original retail purchase has been "used" for the total duration of such use. Warranty statements required by law covering engine emissions-related parts and components are found on a separate written warranty certificate provided to the purchaser at the time of the original retail purchase.

### B. WHAT IS COVERED BY STANDARD WARRANTY

All parts of a new John Deere product (except those noted in Sections D and E below) are covered during the Standard Warranty period set out above.

### C. EXCLUSIVE REMEDY

The repair or replacement of covered parts or components that are defective, as provided in Sections A, B, D.2 and D.3 herein, shall be the purchaser's exclusive remedy for any defect in the product. However, if after repeated attempts such repair or replacement fails to correct the performance problem caused by the defect, the purchaser's sole remedy shall be a refund of the amount paid for the product (in exchange for a return of the product), excluding any transportation charges, license fees, taxes and insurance premiums, and less a reasonable allowance for use of the product prior to its return. In no event will the dealer, John Deere or any company affiliated with John Deere be liable for any incidental or consequential damages, including but not limited to loss of profits, rental of substitute equipment or other commercial loss. Correction of defects in the manner provided above shall constitute fulfillment of

all liabilities of the Dealer, John Deere, or any company affiliated with John Deere to the purchaser or any other person, whether based upon contract, tort, strict liability, or otherwise. This limitation does not apply to claims for personal injury.

**D. ITEMS COVERED SEPARATELY -**

1. Standard Warranty does not apply to batteries, radios, tires, cameras, or to Cummins, MTU or Detroit Diesel Engines installed in John Deere products, which are covered by separate written warranties.
2. Factory-Installed Undercarriage Warranty covers all non-rubberized factory-installed undercarriage wear components for 3 years or 4,000 hours from the date of delivery to the original retail purchaser, whichever occurs first (unless terminated earlier under Section F, below). For purposes of this warranty, a product that has been rented, used for demonstration purposes for 150 or more hours, or otherwise used prior to its original retail purchase has been "used" for the total duration of such use. In addition to the items listed in section E below, Factory-Installed Undercarriage Warranty does not cover: failures due to wear, machine application, maintenance practices, or improper machine configuration; removal and installation labor; transportation or hauling costs; unapproved parts; non-wear items; and rubberized undercarriage components such as rubber tracks. Warranty claims will be pro-rated based upon wear of the failed component and whether track shoe width is approved by John Deere. Factory-Installed Undercarriage Warranty does not apply to Scraper Tractors.
3. StructurALL Warranty for new John Deere Products (except Compact Excavators & Loaders, Skid-Steer Loaders, Compact Track Loaders, Scraper Tractors, Pull-Type Scrapers, and Forestry Attachments, which are not eligible for StructurALL Warranty) begins at the date of delivery to the original retail purchaser and ends (unless terminated earlier under Section F, below) after three (3) years, or 10,000 hours (whichever occurs first). For purposes of this warranty, a product that has been rented, used for demonstration purposes for 150 or more hours, or otherwise used prior to its original retail purchase has been "used" for the total duration of such use. **StructurALL Warranty applies only to the following structural components listed below as installed on the product at the time of original manufacture.** If a particular component is not listed below it is not covered by StructurALL Warranty.

Arm; Articulation Joint (incl. pins & bushings); Bin Frame; Boom; Carbody; C-Frame\*; Circle Frame; Coupler (John Deere built ONLY); Dipperstick; Draft Frame; Engine Frame; Equipment Frame; Grapple Arch and Grapple Boom; Loader Arm; Loader Frame; Mainframe; Moldboard Lift Arm; Pushbeam, NeverGrease™ Pin Joints [Includes steering pin and bushing joints (standard equipment), roller elements (roller bearings) in bucket to boom joints and sliding elements (bushing) for boom and linkage joints (optional equipment)]; Rollover Protection Structure (ROPS); Side Frame; Swing Frame; Track Frame; Undercarriage Frame; X-Frame; Z-bar loader linkage (including bell crank and bucket driver link); Specialty booms and arms marketed as "heavy duty" by John Deere.

*Items Covered by StructurALL for Cut-to-Length Forestry Machines:* Front frame (welded assembly); Rear frame (welded assembly); Crane king post with basement; Middle joint frame; Cabin swing frame; Main Boom

StructurALL Warranty does not apply to:

1. Any product used primarily in extreme duty or severe duty applications such as but not limited to: demolition and wrecking, chemical plant (including fertilizer plants), salt mines, steel mill, land fill and transfer stations, scrap handling, scarifying and other applications that are similarly destructive or similarly heavy duty except specialty booms and arms as stated in Section D.3 above.
2. C-Frames on Crawlers equipped with root rakes or used in forestry applications unless equipped with an "extreme duty" reinforcement package.
3. Cut-to-Length Forestry Heads and Slash Bundler Units.
4. Crawlers equipped with optional side booms.
5. Cut-to-Length Forestry, Excavator, and Log Loader swing bearings.
6. Motor Graders equipped with front- or rear-mounted snow wings.

#### **E. ITEMS NOT COVERED -**

John Deere is NOT responsible for the following:

1. Freight.
2. Adjustments to compensate for wear, for periodic maintenance or adjustments that result from normal wear and tear.
3. Damage caused by unapproved adjustments (electronic or mechanical) to machine or machine components outside of published specifications including but not limited to engine, hydraulic components and relief valves.
4. Program updates, calibrations, and pressure adjustments.
5. Additional Labor Time - Above Dealer Labor Rate.
6. Additional Cleaning - Above Dealer Labor Rate.
7. Rental Fees.
8. Depreciation or damage caused by normal wear or application, lack of reasonable and proper maintenance, failure to follow operating instructions, misuse, lack of proper protection during storage, vandalism, negligence, collision, expenses to seek reinstatement of warranty following theft or loss of Product, or other accidents.
9. Premiums charged for Overtime Labor.
10. Transportation to and from the dealership.
11. Travel time, mileage, or service calls by the dealer.
12. Non-John Deere components or modifications, Rotobec grapples, and attachments installed aftermarket.
13. Shop supplies and maintenance items such as, but not limited to: filters, fuels, oil, hydraulic fluid, lubricants, coolants, conditioners, shop towels, cleaners and degreasers.
14. Torn, cut, or worn hoses.
15. Wear items, such as, but not limited to: body liner, belts, blades, bulbs, lubricated joints (including pins and bushings), dry brakes, brake linings, dry clutch linings, saw blades, chains, skidder grapple shocks, color marking nozzles, and articulation bumpers.
16. Items such as cutting-edge parts, delimiting knives, bucket teeth and rubber track are not warranted for depreciation or damage caused by normal wear, lack of proper maintenance, misuse, failure to follow operating instructions, the elements or accident.
17. Any defect in a non-covered component, or damage to or failure of a covered component caused by a defect in a non-covered component.
18. Secondary damage which occurs from continued operation of a product after recognition of the occurrence of a failure.
19. Parts supplied by or repairs, maintenance or modifications performed by someone other than an authorized John Deere dealer, including any damage caused by such use of parts, repairs, maintenance, or modifications not performed by an authorized John Deere dealer.
20. The use of "track type" tire chains on Feller Bunchers and Skidders is an unapproved modification. Warranty will be void on these machines using "track type" tire chains.
21. Topping off fluids when fluid levels fall in the range between low and full
22. Parts/Kits not ordered on machine and installed aftermarket. These parts will be covered by any applicable parts warranty.
23. Attachments installed aftermarket – i.e., Winch not installed at factory.
24. Custom options installed outside the factory – i.e., G.R. Manufacturing option packages.
25. Used Products (except as otherwise provided in section L below).
26. Lost or stolen Products.

#### **F. TERMINATION OF WARRANTY-**

John Deere is relieved of its obligations under Standard Warranty, StructurALL Warranty, Factory-Installed Undercarriage Warranty and/or Extended Warranty if:

1. The product is modified or altered in ways not approved by John Deere; or
2. Any unapproved or improperly sized attachment is installed on the product. Approval and attachment size shall be at John Deere's sole discretion. (Consult dealer prior to installing attachments or product modification).
3. The product is moved outside the US and/or Canada.

**G. PARTS REPLACED UNDER WARRANTY -**

Only new or remanufactured parts or components furnished or approved by John Deere, will be used if John Deere elects to repair the product. If any such part or component is defective in material or workmanship when installed in the product, John Deere will repair or replace, as it elects, such defective part or component, provided the defect is reported to an authorized John Deere dealer within 90 days of installation or before expiration of the applicable Standard Warranty, Factory-Installed Undercarriage Warranty and/or StructurALL Warranty whichever is later.

**H. TELEMATICS**

*NOTICE: Products may be equipped with telematics hardware and software ("Telematics") that transmit data to John Deere/ Dealer. Purchaser may deactivate Telematics at [www.jdlink.com](http://www.jdlink.com).*

Notwithstanding Purchaser's right, title or interest in the Products, Purchaser agrees that John Deere and Dealer (their affiliates, successors and assigns), without further notice to Purchaser have the right to:

1. Access, use, collect and disclose any data generated by, collected by, or stored in, Products or any hardware or devices interfacing with Products ("Machine Data");
2. Access Machine Data directly through data reporting devices integrated within, or attached to, Products, including Telematics ("Data Reporting Systems"); and
3. Update the Data Reporting Systems software from time to time. Machine Data will only be used in accordance with John Deere's Machine Data Policy, located at [www.JohnDeere.com/MachineDataPolicy](http://www.JohnDeere.com/MachineDataPolicy).

**I. OBTAINING WARRANTY SERVICE -**

To obtain warranty service, the purchaser must request warranty service from a John Deere dealer authorized to sell the product to be serviced. When making such a request, the purchaser must present evidence of the product's delivery date, make the product available at the dealer's place of business, and inform the dealer in what way the purchaser believes the product to be defective. Standard Warranty, Factory-Installed Undercarriage Warranty and/or StructurALL Warranty repairs may be made in the field if the purchaser and servicing dealer so desire. However, John Deere will not be responsible for any charges (such as dealer travel time, mileage or extra labor) that would not have been incurred had the product been repaired at the dealer's place of business.

**J. NO IMPLIED WARRANTY, CONDITIONS OR OTHER REPRESENTATION -**

Where permitted by law, neither John Deere nor any company affiliated with it makes any warranties, representations, conditions or promises, express or implied, as to the quality, performance, or freedom from defect of its products, other than those set forth in this document and **NO IMPLIED WARRANTY OF MERCHANTABILITY, CONDITIONS OR FITNESS IS MADE.**

**K. NO DEALER WARRANTY -**

The selling dealer makes no warranty of its own on any item covered by this warranty and makes no warranty on other items unless the dealer delivers to the purchaser a separate written warranty certificate specifically warranting the item. **The dealer has no authority to make any representation or promise on behalf of John Deere, or to modify the terms or limitations of this warranty in any way.**

**L. USED JOHN DEERE PRODUCTS ONLY -**

John Deere will transfer remaining Standard Warranty, Factory-Installed Undercarriage Warranty and/or StructurALL Warranty to the purchaser of a used John Deere construction and/or forestry product that has been used for less than the full warranty period provided at the product's original retail purchase. This transfer is not effective until change of ownership is registered by a John Deere dealer. **ALL THE TERMS, INCLUDING LIMITATIONS AND EXCLUSIONS, OF THE JOHN DEERE STANDARD WARRANTY, FACTORY-INSTALLED UNDERCARRIAGE WARRANTY, AND/OR STRUCTURALL WARRANTY ORIGINALLY PROVIDED FOR THE PRODUCT REMAIN IN EFFECT AND APPLICABLE.**



Company ID Number: 513478

THE E-VERIFY PROGRAM FOR EMPLOYMENT VERIFICATION  
MEMORANDUM OF UNDERSTANDING

ARTICLE I

PURPOSE AND AUTHORITY

This Memorandum of Understanding (MOU) sets forth the points of agreement between the Department of Homeland Security (DHS) and Warrior Tractor & Equipment Co., Inc. (Employer) regarding the Employer's participation in the Employment Eligibility Verification Program (E-Verify). This MOU explains certain features of the E-Verify program and enumerates specific responsibilities of DHS, the Social Security Administration (SSA), and the Employer. E-Verify is a program that electronically confirms an employee's eligibility to work in the United States after completion of the Employment Eligibility Verification Form (Form I-9). For covered government contractors, E-Verify is used to verify the employment eligibility of all newly hired employees and all existing employees assigned to Federal contracts or to verify the entire workforce if the contractor so chooses.

Authority for the E-Verify program is found in Title IV, Subtitle A, of the Illegal Immigration Reform and Immigrant Responsibility Act of 1996 (IIRIRA), Pub. L. 104-208, 110 Stat. 3009, as amended (8 U.S.C. § 1324a note). Authority for use of the E-Verify program by Federal contractors and subcontractors covered by the terms of Subpart 22.18, "Employment Eligibility Verification", of the Federal Acquisition Regulation (FAR) (hereinafter referred to in this MOU as a "Federal contractor with the FAR E-Verify clause") to verify the employment eligibility of certain employees working on Federal contracts is also found in Subpart 22.18 and in Executive Order 12989, as amended.

ARTICLE II

FUNCTIONS TO BE PERFORMED

**A. RESPONSIBILITIES OF SSA**

1. SSA agrees to provide the Employer with available information that allows the Employer to confirm the accuracy of Social Security Numbers provided by all employees verified under this MOU and the employment authorization of U.S. citizens.
2. SSA agrees to provide to the Employer appropriate assistance with operational problems that may arise during the Employer's participation in the E-Verify program. SSA agrees to provide the Employer with names, titles, addresses, and telephone numbers of SSA representatives to be contacted during the E-Verify process.
3. SSA agrees to safeguard the information provided by the Employer through the E-Verify program procedures, and to limit access to such information, as is appropriate by law, to individuals responsible for the verification of Social Security Numbers and for evaluation of the E-Verify program or such other persons or entities who may be authorized by SSA as governed





Company ID Number: 513478

To be accepted as a participant in E-Verify, you should only sign the Employer's Section of the signature page. If you have any questions, contact E-Verify at 888-464-4218.

<b>Employer Warrior Tractor &amp; Equipment Co., Inc.</b>	
<b>Stanley McCracken</b>	
Name (Please Type or Print)	Title
<b>Electronically Signed</b>	<b>03/01/2012</b>
Signature	Date
<b>Department of Homeland Security – Verification Division</b>	
<b>USCIS Verification Division</b>	
Name (Please Type or Print)	Title
<b>Electronically Signed</b>	<b>03/01/2012</b>
Signature	Date

Information Required for the E-Verify Program

Information relating to your Company:

Company Name:	Warrior Tractor & Equipment Co., Inc.
Company Facility Address:	6801 McFarland Blvd
	Northport, AL 35476
Company Alternate Address:	P O Box 412
	Northport, AL 35476
County or Parish:	TUSCALOOSA
Employer Identification Number:	630588737

Company ID Number: 513478

North American Industry Classification Systems Code:	423
Administrator:	Warrior Tractor and Equipment Co., Inc.
Number of Employees:	100 to 499
Number of Sites Verified for:	1
<b>Are you verifying for more than 1 site? If yes, please provide the number of sites verified for in each State:</b>	
<ul style="list-style-type: none"><li>ALABAMA 1 site(s)</li></ul>	

**Information relating to the Program Administrator(s) for your Company on policy questions or operational problems:**

Name:	Stanley N McCracken	Fax Number:	(205) 333 - 0101
Telephone Number:	(205) 339 - 0300		
E-mail Address:	wte024@warriortractor.com		