

BID SUBMITTAL FORM
Alabama County Joint Bid Program
BID ITEM – 21 TON WHEEL EXCAVATOR

Company Name: THOMPSON TRACTOR COMPANY

Address: P.O. BOX 10367
BIRMINGHAM, AL 35202-0367

Bid Submitted by: JAY SMITH
(Name of company representative)

Title: SALES OPERATIONS MANAGER E-mail address: JAYSMITH@THOMPSONTRACTOR.COM

Phone: (205) 849-4242 Fax: _____

By submitting this bid, we agree:

Initials

The equipment model number identified below meets the bid specs for this bid item

JAS

That the bid price will be honored for all counties for the period from Jan. 1, 2023 to Dec. 31, 2023.

JAS

The equipment will be delivered at the bid price to all counties participating in the joint bid program.

JAS

The company acknowledges the freight preparation and delivery price is to be included in the total bid price for the standard machine.

JAS

The company representative listed above will be the contact person for purchasing this bid item under the joint bid program.

JAS

The bid is accompanied by a current catalog or model specification document for the model number identified below.

JAS

The bid is accompanied by a copy of the manufacturer's standard warranty as required in the bid specifications.

JAS

The bid includes the e-verify documentation required by Alabama law.

JAS

If awarded the bid, a performance bond will be provided upon request.

JAS

The bid documents include the **Manufacturer's Suggested Retail Price Sheet (MSRP) for the Standard Machine.**

JAS

Heavy Equipment – Bid Item: 21 Ton Wheel Excavator


Total Bid Price for Standard Machine: \$ 347,401
(Total Bid Price for Standard Machine Includes Freight Preparation, Delivery and Standard Warranty Costs)*

Freight Preparation and Delivery: \$ 10,923
(Included in Standard Machine Bid Price)

Manufacturer's Suggested Retail Price for Standard Machine: \$ 467,330

Equipment Model #: CATERPILLAR M320

Description: WHEELED EXCAVATOR

Signature of company representative submitting bid: 

Title: SALES OPERATIONS MANAGER

* **NOTE:** Award will be made based on the total cost of the **Standard Machine**. The total cost of the standard machine is to include the freight preparation, delivery and standard warranty cost. Freight preparation, delivery will be excluded from the total bid price of the standard machine in determining the percentage discount for any available options.

BID SUBMITTAL FORM: OPTION COST SHEET

Heavy Equipment – Bid Item: 21 Ton Wheel Excavator

By submitting this bid, we agree:

To offer any available options at the percent difference between the Manufacturer's Suggested Retail Price Sheet and the actual bid price on the Standard Machine*


2.15

The bid documents include the **Manufacturer's Suggested Retail Price Sheet (MSRP)** for the Standard Machine

2.15

Equipment Model #: CATERPILLAR M320

Description: WHEELED EXCAVATOR

Signature of company representative submitting bid: 

Title: SALES OPERATIONS MANAGER

***Note:** The percent difference between the **Manufacturer's Suggested Retail Price Sheet (MSRP)** for the standard machine as specified by these **Bid Specifications** and the actual price bid by the vendor will be calculated to determine the percentage discount to be applied to any available options. The bid price of the freight preparation, delivery cost shall be excluded in determining the percentage discount to be applied to available options. Any individual county may choose to add any available option to the standard machine at the percentage discount at the time of purchase.

BID SPECIFICATIONS FOR 21 TON WHEEL EXCAVATOR

GENERAL

These specifications shall be construed as the minimum acceptable standards for a 21-ton wheel excavator. Should the manufacturer's current published data or specifications exceed these standards, the manufacturer's standards shall be considered minimum and shall be furnished. All integral parts not specifically mentioned in the scope of these specifications that are necessary to provide a complete working unit shall be furnished. Additionally, the machine offered for bid shall include all standard manufacturer's equipment. **The wheel excavator must be a new current production model and shall meet all EPA and other applicable standards at the time of manufacture.**

The use of specific names and numbers in the specifications is not intended to restrict the bidder or any seller or manufacturer, but is intended solely for the purpose of indicating the type, size and quality of equipment considered best adapted to the uses of the counties participating in this joint bid.

BID SUBMITTAL FORM

Each bidder must submit his or her bid on the bid submittal form included in the invitation to bid package. All written warranties to be submitted shall be attached to the bid submittal form.

BID PRICE

The price bid shall include all destination charges, delivery charges, title fees, rebates, and all other applicable costs and refunds.

MANUALS

Each unit shall be provided with one (1) copy of the operator's manual, one (1) copy of the repair manual and one (1) copy of the current parts manual. Units will not be accepted for delivery until the manuals as outlined above are received by the purchaser.

REPLACEMENT PARTS AVAILABILITY

Parts must be available for 5 years or 7,500 hours of use for the piece of equipment. If any replacement parts are not delivered within three (3) working days of an order being placed, the bidder will deliver an equivalent machine for the county to use at no cost to the county until such time as the parts are delivered to the county so it can affect repairs to its machine.

WARRANTY

Bidders shall submit a copy of the manufacturer's standard warranty. Warranty shall include service response time of maximum of 36 hours within notification by county.

Yes No
Page # _____
or
Attachment

WEIGHT

Minimum **41,400 lbs.**

Yes No
Page # 14

ENGINE

Six (6) cylinders, turbo charged, diesel engine with minimum of **171 NET** flywheel Horsepower. Displacement minimum of **268 Cu. In.**

Yes No
Page# 14

Oil and fuel filters of spin-on type, vertically mounted, accessible from ground level

Yes No
Page # 2, 3, 15

Automatic engine speed control

Yes No
Page # 15

Factory installed fuel line water separator

Yes No
Page # 11

Variable speed on-demand fan type cooling system

Yes No
Page # 14, 15

Engine designed and produced by equipment manufacturer

Yes No
Page # 14

TRANSMISSION

Two-speed power shift, all-wheel drive in both speed ranges with creeper speed

Yes No
Page # 8, 15

Maximum travel speed not less than **21 mph**

Yes No
Page # TECH p. 2

Travel speed lock

Yes No
Page # 8

HYDRAULICS

Variable displacement, closed center, load sensing hydraulic system

Yes No
Page # 14, 15

Minimum **71-gallon** hydraulic oil system (including tank)

Yes No
Page # 14

Travel circuit maximum pressure not less than **5,075 psi**

Yes No
Page # 14

Implement circuit maximum pressure not less than **5,075 psi**

Yes No
Page # 14

High pressure hydraulics circuit capable of powering high speed cutting attachment

Yes No
Page # 14, 15

Single rocker pedal controls

Yes No
Page # 8

AXLES/BRAKES

Front steering axle pivotally mounted to the frame and free to oscillate not less than 8° in either direction

Yes No
Page # TECH p. 2

Minimum Turning Radius (Outside of Tire) **21- ft.**

Yes No
Page # TECH p. 2

Minimum **14"** ground clearance

Yes No
Page # 14

Minimum tractive force/drawbar pull **23,380 lb.**

Yes No
Page # TECH p. 2

Automatic brake/axle lock

Yes No
Page # 8

ELECTRONICS, ELECTRONIC CONTROLS, ELECTRIC SYSTEM

Electronic fluid level check at machine start-up with operator warning for the following fluids: engine coolant, hydraulic oil

Yes No
Page # 10

Lighter/Power Supply

Yes No
Page # 15

24 volt electrical starting system

Yes No
Page # 15

Alternator rated at not less than 115 amps

Yes No
Page # 14

Two 12 Volt Heavy Duty, Maintenance Free Batteries

Yes No
Page # 15

Central diagnostic function to record system parameters and faults

Yes No
Page # 15

Cab monitor warning display when oil and filter maintenance interval is due

Yes No
Page # 10

Cab monitor text warning messages of problems and international fault codes display

Yes No
Page # 10

Central diagnostic function to record system parameters and faults

Yes No
Page # 15

Master electrical disconnect switch that cuts all electrical power to all circuits

Yes No
Page # TECH p. 72

BOOM STICK AND PERFORMANCE

One-piece boom with 9'6" minimum stick length

Yes No
Page # TECH p. 72

Maximum reach at ground level not less than 32' 11"

Yes No
Page # TECH p. 7

Maximum digging depth not less than 21'-0"

Yes No
Page # TECH p. 7

Maximum bucket digging force with standard trenching bucket not less than 30,700 lbs.

Yes No
Page # TECH p. 7

Maximum stick digging force not less than 20,300 lbs.

Yes No
Page # TECH p. 7

Maximum lifting capacity at ground level 20' from machine with load over front and two stabilizers down not less than 15,700 lbs.

Yes No
Page # TECH p. 71

Anti-drift valves for stick and bucket cylinders

SWING MECHANISM

Max. Swing Speed not less than 9.2 rpm

Yes No
Page # 14

Swing Torque not less than 38,000 ft-lb

Yes No
Page # 14

CAB

Road, tail, and turn lights

Yes No
Page # 15

Falling objects guard

Yes No
Page # 2, 7, TECH p. 75

Suspension seat with lumbar support

Yes No
Page # 4

Sliding door window

Yes No
Page # TECH p. 75

Control levers mounted to suspension seat

Yes No
Page # 4

Shock reducing dampening mounts

Yes No
Page # 4

Factory installed CD/MP3/radio

Yes No
Page # 4

Factory installed air conditioning with easy removable primary filter

Yes No
Page # 14

All hydraulic controls locked out when console is in raised position.

Yes No
Page # TECH p. 73

Console must be in raised position for engine start-up

Yes No
Page # TECH p. 73

Back-up alarm

Yes No
Page # TECH p. 73

Rear View and side view Cameras

Yes No
Page # 3, 15

Retractable seat belt

Yes No
Page # TEC p. 74

GENERAL:

Anti-skid, punched steel star plate covering the entire normal walking surface of the upper structure

Yes No
Page # 11

Centralized maintenance and greasing points accessible from ground level

Yes No
Page # 10

Wiper and washer for lower windshield

Yes No
Page # 11

Fuel capacity not less than 124 gal.

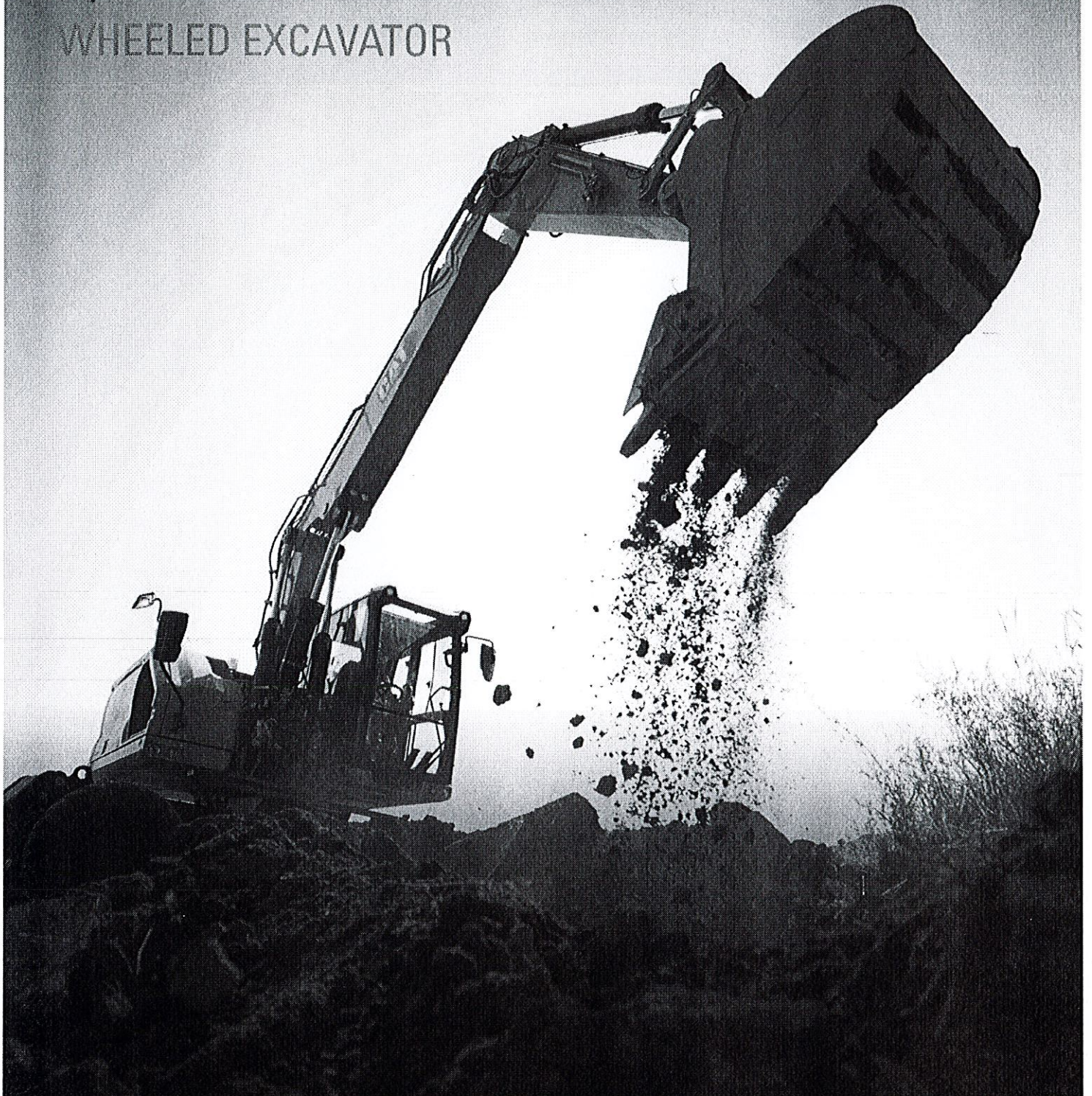
Yes No
Page # 14

Bucket:

Standard with no bucket. Buckets will be considered optional attachments.

M320

WHEELED EXCAVATOR



Engine Power (ISO 14396:2002)	129 kW (174 hp)
Operating Weight Maximum	21 200 kg (40,740 lbs)

Meets U.S. EPA Tier 4 Final, EU Stage V, and Korea Tier 4 Final emission standards.



THE NEW CAT® M320

BOOSTING EFFICIENCY

The Cat® M320 Excavator maximizes performance with up to 16 percent more swing torque to get the job done faster. Save time and money with up to 10 percent overall savings in maintenance costs, longer service intervals, and 100 percent daily ground level maintenance. Combined with a comfortable working environment, the M320 keeps you working quickly and efficiently.



NEXT GENERATION WHEELED EXCAVATORS

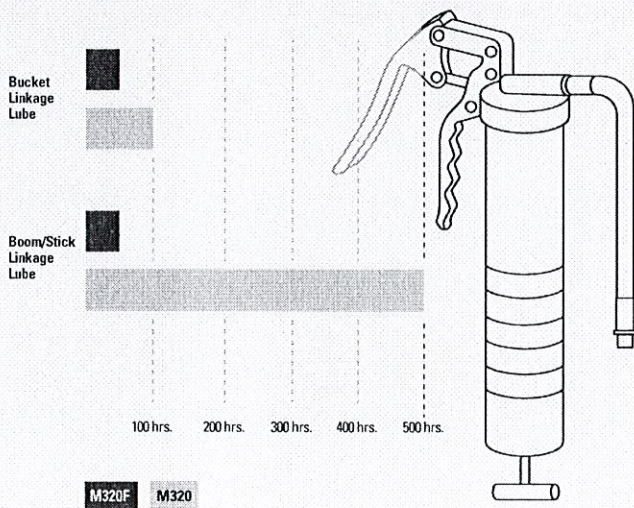
The new line of Cat Excavators offers more choices than ever for your business.

- + LOWER OPERATING AND MAINTENANCE COSTS
- + INCREASED OPERATOR EFFICIENCY AND VISIBILITY
- + MORE IN-CAB COMFORT

Ready to help you make your business stronger, Cat Next Generation Wheeled Excavators give you new ways to get the most work done at a cost that fits your business.



DO MORE WORK WITH EXTENDED INTERVALS



MAXIMIZE PERFORMANCE

Work faster with up to 16 percent more swing torque with lower fuel and DEF consumption. Tiltrotator integration gives you more versatility to complete more tasks faster with one machine.

UP TO 10% LOWER MAINTENANCE COSTS

Fewer maintenance costs, combined with 100 percent daily ground-level maintenance and extended service intervals, increase uptime and keep overall costs down.

ENHANCED CAB COMFORT

Operate comfortably with the ergonomic control layout and cab options. Get better visibility with rear- and side-view cameras and an optional 360° machine view system.

NEW CAB DESIGN MAKES HARD WORK EASY

Comfort and movement efficiency help keep you productive and alert all shift long. A tip-up left console lets you get in and out of the cab easily, and the standard seat is wide and adjustable for operators of virtually any size.



ERGONOMIC CONTROL LAYOUT

Controls are easy to reach, allowing you to operate comfortably with minimal twists and turns.

REDUCED CAB VIBRATIONS

Work more comfortably with reduced cab vibrations from advanced viscous mounts. The standard ROPS cab meets ISO 12117-2:2008 requirements and helps block outside noise.

BLUETOOTH® CONNECTION

Bluetooth-integrated radio allows for seamless mobile phone connection to listen to music, podcasts, and hands-free calling.

BOOST YOUR PRODUCTIVITY BY UP TO 45%

WITH SIMPLE-TO-USE INTEGRATED CAT TECHNOLOGY



OPTIONAL TECHNOLOGIES INCLUDE:



CAT GRADE WITH 2D

Cat Grade with 2D helps operators reach grade faster. Onboard processors and sensors provide real-time guidance on distance to grade without guesswork. Work safer with fewer ground personnel needed to check the work area for obstacles or grade. All Cat Grade systems are compatible with radios and base stations from Trimble.



CAT PAYLOAD

Onboard weighing system increases loading efficiency with on-the-go weighing. Combine with VisionLink® to manage your production targets remotely (available for download to USB).

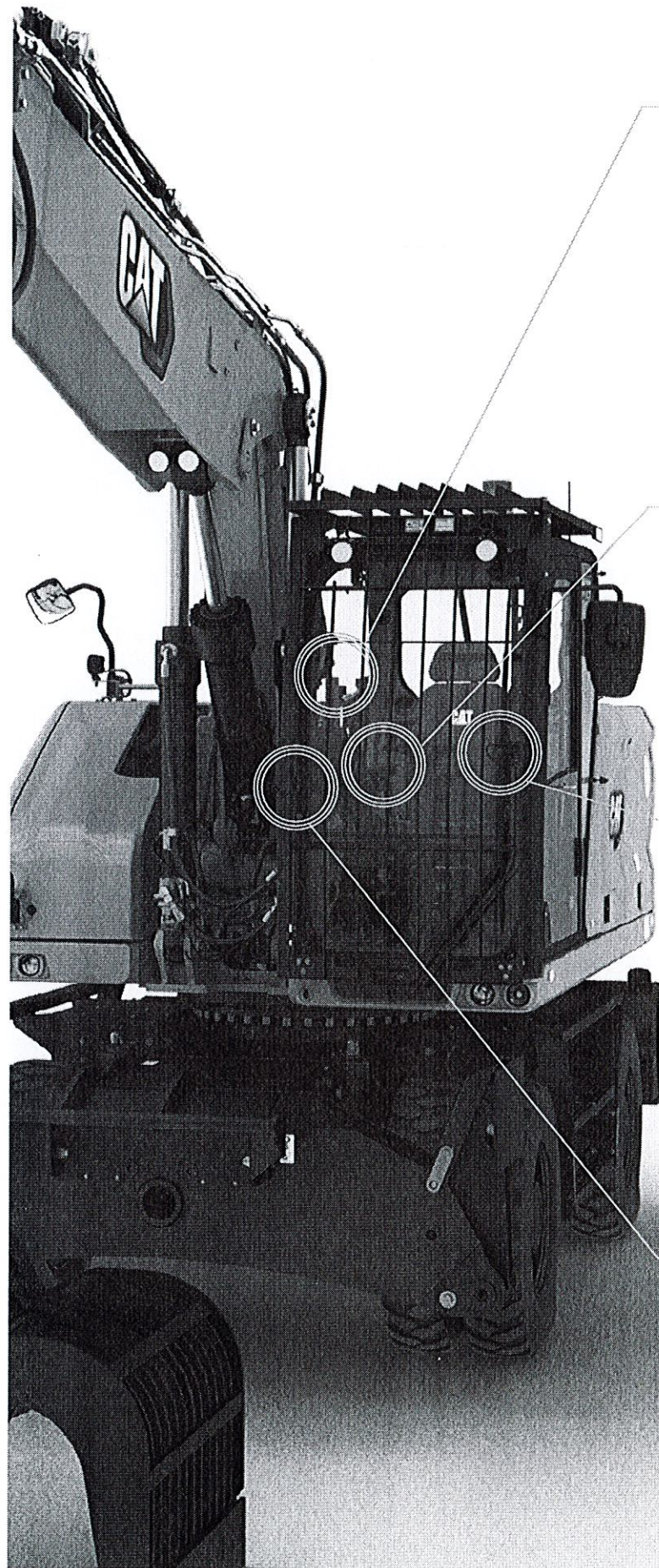
Cat Technology gives you the edge. Operators of all experience levels will dig, load and grade with more confidence, speed, and accuracy to save time and money.

CAT TECHNOLOGY MORE WORK, LESS TIME



GET JOBS DONE FASTER WITH LESS REWORK

Cat Grade with Advanced 2D lets you create and edit grade designs with ease on a second high-resolution 240 mm (10 in.) touchscreen monitor. Cat Grade with 3D adds real-time, pinpoint positioning using GPS and GLONASS. Already invested in a grade infrastructure? You can install grade systems from Trimble.



POWER MODES

Set and store your power mode preference using Operator ID. Owners can lock in the mode they want their operators to use to help manage fuel consumption.



KEYLESS PUSH TO START

The M320 uses a keyless push-button engine start. This adds security for the machine by using Operator ID codes to limit and track machine access. Codes can be entered manually via an optional Bluetooth key fob.



CUSTOMIZABLE JOYSTICKS

Joystick function can be customized through the monitor. Joystick pattern as well as response can be set to match operator preference. All preferences are saved with the Operator ID and restored at login.



TOUCHSCREEN MONITOR

Most machine settings can be controlled through the high resolution 203 mm (8-inch) touchscreen monitor. It offers 42 languages and is easy to read from the seat.

SMARTBOOM™

SmartBoom lets the boom freely travel up and down without using any pump flow, so operators can focus on attachment control and have a smoother cycle.

AUTO AXLE LOCK WITH AUTO BRAKE

The axle locks at zero speed and unlocks when the travel pedal is activated. The axle can also be manually locked with a button on the right-hand console. Auto Axle Brake Lock automatically activates the service brake and locks axle oscillation. It is activated when the travel pedal is in neutral and the machine speed is near zero.

RIDE CONTROL

The ride control system lets you travel faster over rough terrain with improved ride quality. Accumulators act as shock absorbers to help make your journey smoother.

JOYSTICK STEERING

Keep both hands on the joysticks while simultaneously moving the boom and stick and repositioning the machine with the slider switch on the right joystick.



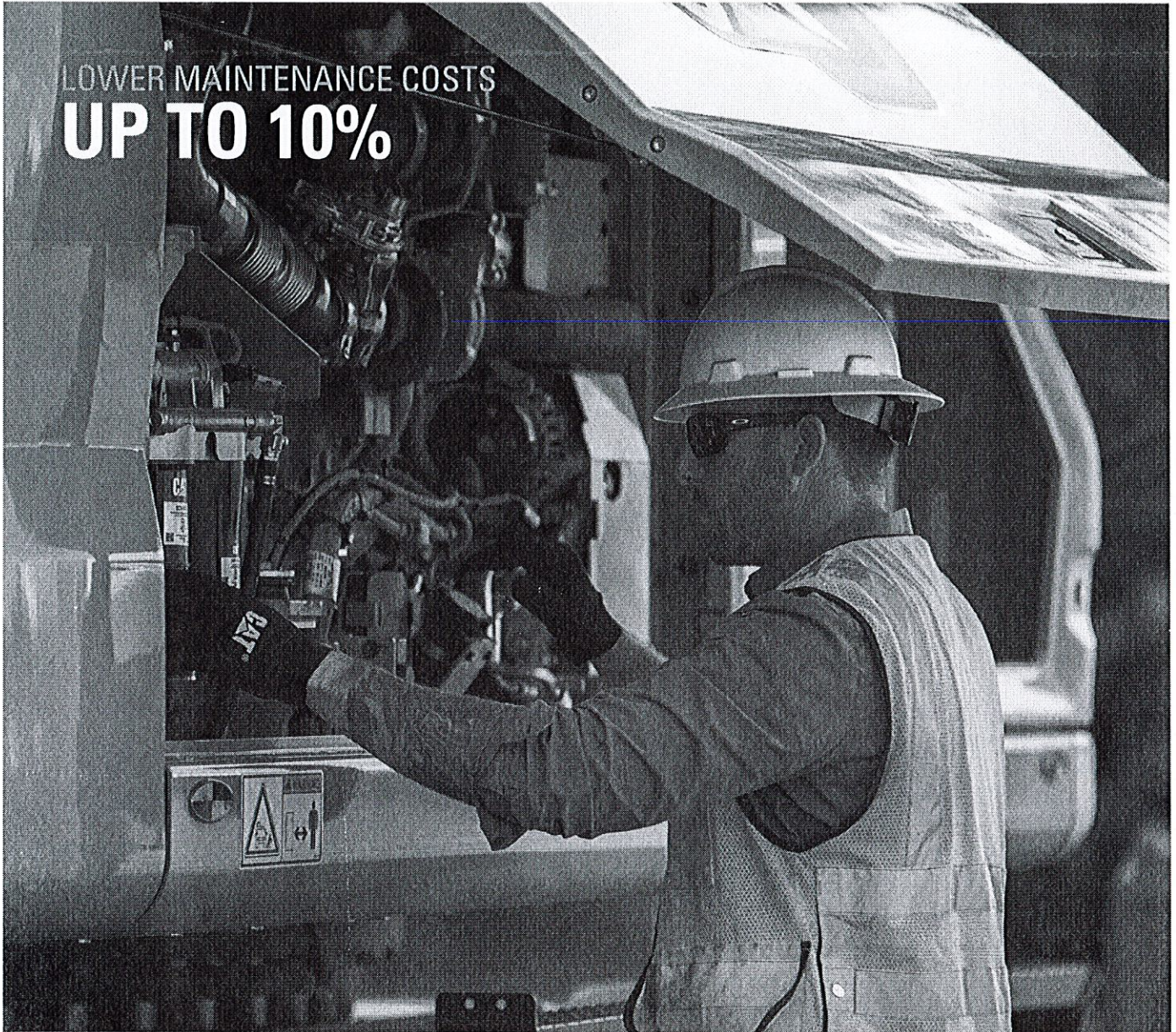
EXPAND YOUR JOBSITE CAPABILITIES

WITH MORE SWING TORQUE
AND FUEL EFFICIENCY

An increase in swing torque makes traveling, swinging, and working on slopes easy. Backfill trenches and move around your jobsite faster than before – allowing you to be more productive and finish jobs quickly. An advanced hydraulic system provides the optimum balance of power and efficiency while giving you the control you need for precise digging requirements.



LOWER MAINTENANCE COSTS
UP TO 10%



DO MORE. PAY LESS.

With extended and more synchronized maintenance intervals, you get more done at a lower cost. Consolidated filter locations make service faster.

INFORMATION AT YOUR FINGERTIPS

View operating information such as fuel and oil levels as well as critical service alerts on the in-cab touchscreen monitor. Your machine's filter life and maintenance intervals are also trackable on the in-cab monitor

NEW LONGER-LASTING FILTERS

The new hydraulic oil filter provides improved filtration performance, anti-drain valves to keep oil clean when the filter is replaced, and lasts up to 50 percent longer than previous filter designs.

SAFETY FEATURES

LOOK OUT FOR YOUR PEOPLE AND EQUIPMENT



GROUND-LEVEL DAILY MAINTENANCE

All daily maintenance checks can be performed from ground level, making maintenance faster, easier, and safer. Checkpoints include the engine oil dipstick, fuel water separator, fuel tank water and sediment drains, and cooling system coolant level check.

UPPER PLATFORM ACCESS

The service platform design provides easy, safe, and quick access to upper platform. The steps use anti-skid punch plate to prevent slipping.

2D E-FENCE

Optional 2D E-Fence is integrated right out of the factory to prevent the excavator from moving outside operator defined set points.

SECURE START

Use your PIN code on the monitor or the optional Bluetooth key fob to enable the push-button start feature.

SEE THE JOBSITE AROUND YOU

Enlarged windows and improved machine layout increase visibility from the seat of the cab. Standard rearview and right-side-view cameras always keep operators aware of their surroundings. An optional 360° visibility feature is also available. Powerful, long-lasting LED lights consume minimal power, keeping you safe while working in the dark.

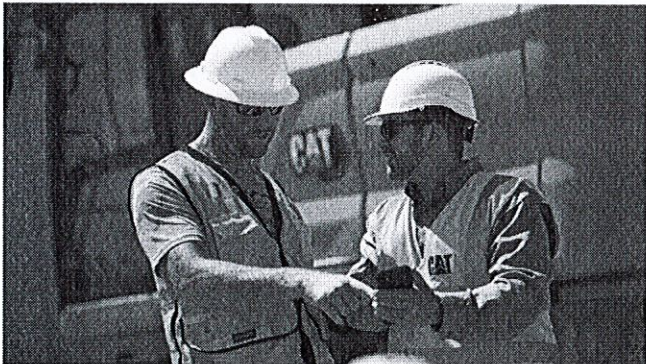
CAT EQUIPMENT MANAGEMENT TECHNOLOGY TAKES THE GUESSWORK OUT OF MANAGING YOUR EQUIPMENT

Cat Equipment Management telematics technology helps take the complexity out of managing your jobsites by gathering data generated by your equipment, materials, and people and serving it up to you in customizable formats.



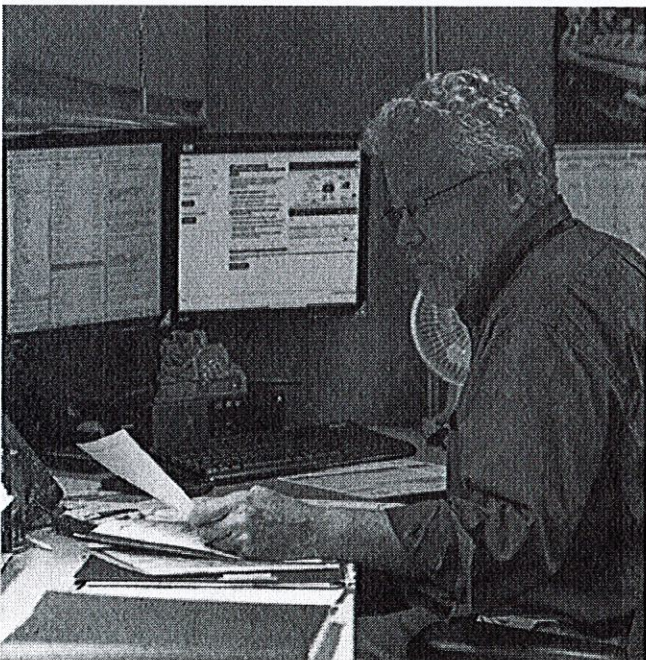
PRODUCT LINK™

Product Link collects data automatically and accurately from your assets – any type and any brand. Information such as location, hours, fuel usage, productivity, idle time, maintenance alerts, diagnostic codes, and machine health can be viewed online through web and mobile applications.



VISIONLINK®

Access information anytime, anywhere with VisionLink. Use it to make informed decisions that boost productivity, lower costs, simplify maintenance, and improve safety and security on your jobsite. With different subscription level options, your Cat dealer can help you configure exactly what you need to connect your fleet and manage your business without paying for extras you don't want. Subscriptions are available with cellular or satellite reporting (or both).



Remote Services is a suite of technologies that improve your jobsite efficiency.

Remote Troubleshoot allows your Cat dealer to perform diagnostic testing on your connected machine remotely, pinpointing potential issues while the machine is in operation. Remote Troubleshoot helps ensure the technician arrives with the correct parts and tools the first time, eliminating additional trips to save you time and money.

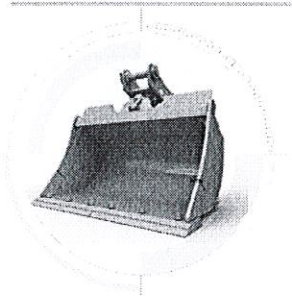
Remote Flash updates onboard software to potentially reduce update time by as much as 50 percent. You can initiate the update when convenient, increasing your overall operating efficiency.

The **Cat App** helps you manage your assets – at any time – right from your smartphone. You can see your fleet location, hours, and other information. You will get critical alerts for required maintenance, and you can even request service from your local Cat dealer.

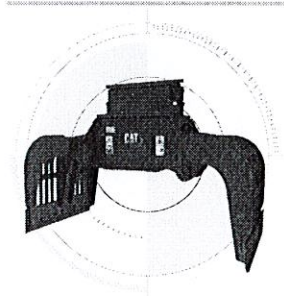
INCREASE YOUR PRODUCTIVITY AND PROFIT WITH CAT ATTACHMENTS

You can easily expand the performance of your machine by utilizing any of the variety of Cat Attachments. Each Cat Attachment is designed to fit the weight and horsepower of Cat Wheeled Excavators for improved performance, safety, and stability.

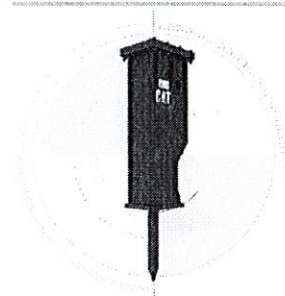
BUCKETS



GRAPPLES



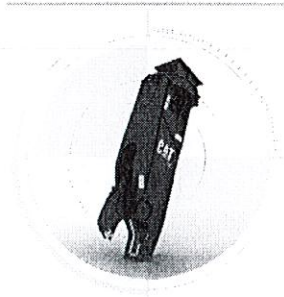
HYDRAULIC HAMMERS



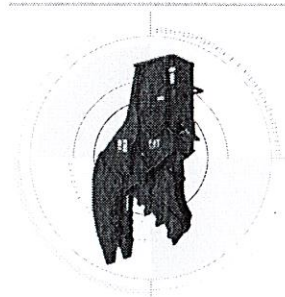
MULTI-PROCESSORS



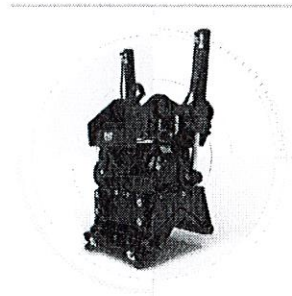
SHEARS



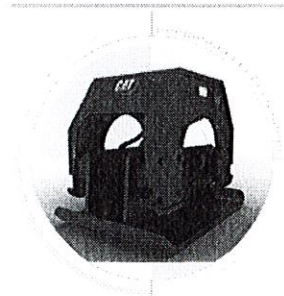
PULVERIZERS



TILTROTATORS



COMPACTORS



COUPLERS



TECHNICAL SPECIFICATIONS

See cat.com for complete specifications.

ENGINE		
Engine Model	Cat C4.4	
Engine Power – ISO 14396:2002	129 kW	174 hp
Engine Power – ISO 14396:2002 (DIN)	176 hp(Ps)	
Net Power – ISO 9249:2007	128 kW	171 hp
Net Power – ISO 9249:2007 (DIN)	174 hp(Ps)	
Bore	105 mm	4 in
Stroke	135 mm	5 in
Displacement	4.4 L	268.5 in ³
<ul style="list-style-type: none"> • Net power advertised is the power available at the flywheel when engine is equipped with fan, air cleaner, CEM exhaust gas aftertreatment, alternator, and cooling fan running at intermediate speed. • Recommended for use up to 4500 m (14,760 ft) altitude with engine power derate above 3000 m (9,840 ft). • Rated speed 2,200 rpm. 		

HYDRAULIC SYSTEM		
Main System – Maximum Flow	306 L/min	81 gal/min
Maximum Pressure – Equipment	37 000 kPa	5,366 psi
Maximum Pressure – Travel	35 000 kPa	5,076 psi
Maximum Pressure – Swing	39 500 kPa	5,729 psi

SWING MECHANISM		
Swing Speed	9.2 rpm	
Maximum Swing Torque	52.5 kN-m	38,722 lbf-ft

WEIGHTS		
Operating Weight Minimum	18 800 kg	41,450 lb
Operating Weight Maximum	21 200 kg	46,740 lb

SERVICE REFILL CAPACITIES		
Fuel Tank	470 L	124.2 gal
Diesel Exhaust Fluid (DEF) Tank	30 L	7.9 gal
Cooling System	31.7 L	8.4 gal
Engine Oil	13 L	3.4 gal
Hydraulic Tank	155 L	40.9 gal
Hydraulic System (including tank)	270 L	71.3 gal
Final Drive	2.5 L	0.7 gal

DIMENSIONS		
Boom	VA 5260 mm (17'3")	
Stick	Reach 2.5 m (8'2")	
Bucket	GD 0.98 m ³ (1.28 yd ³)	
Shipping Height (top of cab)	3370 mm	11'1"
Support Point	3850 mm	11'9"
Shipping Length	8925 mm	29'3"
Tail Swing Radius	2600 mm	8'6"
Counterweight Clearance	1306 mm	4'3"
Ground Clearance	420 mm	1'5"
Undercarriage Length (with blade and outrigger)	5050 mm	16'7"
Wheel Base	2700 mm	8'10"

WORKING RANGES AND FORCES		
Boom Type	VA 5260 mm (17'3")	
Stick	Reach 2.5 m (8'2")	
Bucket	GD 0.98 m ³ (1.28 yd ³)	
Loading Height	6960 mm	22'10"
Cutting Height	9950 mm	32'8"
Digging Depth	6030 mm	19'9"
Reach at Ground Level	9290 mm	30'6"
Vertical Wall Digging Depth	4230 mm	13'11"
Bucket Forces (ISO)	137 kN	30,799 lbf
Stick Forces (ISO)	92 kN	20,682 lbf
<ul style="list-style-type: none"> • Range values are with dual pneumatic tires (10.00-20). • Range values are calculated with a GD bucket (CW) and CW-30 quick coupler with a tip radius of 1535 mm (5'0"). 		

AIR CONDITIONING SYSTEM		
<ul style="list-style-type: none"> • The air conditioning system on this machine contains the fluorinated greenhouse gas refrigerant R134a (Global Warming Potential = 1430). The system contains 0.85 kg of refrigerant which has a CO₂ equivalent of 1.216 metric tonnes. 		

STANDARD & OPTIONAL EQUIPMENT

Standard and optional equipment may vary. Consult your Cat dealer for details.

CAB	STANDARD	OPTIONAL
ROPS, sound suppression	•	
Deluxe Cab		•
Premium Cab		•
High-resolution 254 mm (10 in) LCD touchscreen monitor	•	
CAT TECHNOLOGY	STANDARD	OPTIONAL
Product Link	•	
Remote Flash/Troubleshoot capability	•	
Cat Grade with 2D		•
Cat Grade with Advanced 2D		•
Cat Grade with 3D		•
Cat Payload		•
2D E-Fence		•
Laser Catcher		•
ENGINE	STANDARD	OPTIONAL
Power mode selector	•	
One-touch low idle with auto engine speed control	•	
Auto engine idle shutdown	•	
52°C (125°F) high-ambient cooling capacity	•	
-18°C (0°F) cold start capability	•	
Double element air filter with integrated precleaner	•	
On-demand electric cooling fans with auto-reverse function	•	
Electric fuel priming pump	•	
HYDRAULIC SYSTEM	STANDARD	OPTIONAL
Automatic swing brake	•	
Auto hydraulic oil warm up	•	
Electronic main control valve	•	
Boom and stick drift reduction valves	•	
Boom/stick lowering check valves		•
One-slider joysticks	•	
Two-slider joysticks		•
Combined flow/high-pressure auxiliary circuit		•
Heavy lift mode	•	
Quick coupler circuit	•	
SmartBoom™		•
Ride control		•
Cat TRS support		•
Joystick steering		•
Separate dedicated swing pump	•	

BOOM AND STICKS	STANDARD	OPTIONAL
5650 mm (18'6") one-piece boom		•
5260 mm (17'3") variable adjustable boom		•
2500 mm (8'2") stick		•
2900 mm (9'6") stick		•
UNDERCARRIAGE AND STRUCTURES	STANDARD	OPTIONAL
10.00-20 16 PR, dual tires		•
11.00-20- 16 PR, dual tires		•
315/70R 22.5, no gap dual tires		• ¹
445/70R 19.5, single tires		•
All wheel drive	•	
Automatic brake/axle lock	•	
3600 kg (7,937 kg) counterweight		• ¹
4200 kg (9,259 lb) counterweight		•
Fenders, front and rear, synthetic	•	
ELECTRICAL SYSTEM	STANDARD	OPTIONAL
LED lights on boom and cab	•	
LED lights on chassis (left-hand, right-hand) and counterweight	•	
Rooding and indicator lights, front and rear	•	
Maintenance-free batteries	•	
Centralized electrical disconnect switch	•	
Electrical refueling pump		•
SERVICE AND MAINTENANCE	STANDARD	OPTIONAL
Sampling ports for Scheduled Oil Sampling (S•O•S SM)	•	
Automatic lubrication system for implement and swing system		•
SAFETY AND SECURITY	STANDARD	OPTIONAL
Rear- and right-side-view cameras	•	
360° visibility		•
Wide angle mirrors	•	
Ground-level engine shutoff switch	•	
Anti-skid plate and countersunk bolts on service platform	•	
Signaling/warning horn	•	

¹Europe only.

Not all features are available in all regions. Please check with your local Cat dealer for specific offering availability in your area. For additional information, refer to the Technical Specifications brochures for the M320 available at www.cat.com or your Cat dealer.

For more complete information on Cat products, dealer services and industry solutions, visit us on the web at www.cat.com.

Materials and specifications are subject to change without notice. Featured machines in photos may include additional equipment. See your Cat dealer for available options.

© 2021 Caterpillar. All Rights Reserved. CAT, CATERPILLAR, LET'S DO THE WORK, their respective logos, Product Link, SmartBoom, S•O•S, "Caterpillar Corporate Yellow", the "Power Edge" and Cat "Modern Hex" trade dress as well as corporate and product identity used herein, are trademarks of Caterpillar and may not be used without permission. VisionLink is a trademark of VirtualSite Solutions LLC, registered in the United States and in other countries.

www.cat.com www.caterpillar.com

AEXQ3157-01
Replaces: AEXQ3157-00
Build Number: 07B
(Aus-NZ, Eur,
Korea, N Am)





M320

Wheeled Excavator

Technical Specifications

Configurations and features may vary by region. Please consult your Cat® dealer for availability in your area.

Table of Contents

Specifications	2
Engine	2
Transmission	2
Service Refill Capacities	2
Swing Mechanism	2
Undercarriage	2
Operating Weights	2
Major Component Weights	3
Hydraulic System	3
Tires	3
Dozer Blade	4
Emissions and Safety	4
Standards	4
Sound Performance	4
Air Conditioning System	4
Dimensions	5
Undercarriage Dimensions	6
Working Ranges	7
Lift Capacities:	
Variable Adjustable Boom	8
One-Piece Boom	16
Bucket Specifications and Compatibility:	
Europe	24
North America	31
Australia and New Zealand	32
South Korea	33
Attachments Offering Guide:	
Europe	34
North America	64
Australia and New Zealand	68
South Korea	70
Standard and Optional Equipment	71
Dealer Installed Kits and Attachments	74
Cab Options	75

M320 Wheeled Excavator Specifications

Engine

Engine Model	Cat® C4.4	
Maximum Gross Power		
ISO 14396	129.4 kW	174 hp
ISO 14396 (metric)	176 hp (PS)	
Maximum Net Power		
ISO 9249	127.8 kW	171 hp
ISO 9249 (metric)	174 hp (PS)	
Bore	105 mm	4.1 in
Stroke	135 mm	5.3 in
Displacement	4.4 L	268.5 in ³
Biodiesel Capability	Up to B20 ⁽¹⁾	
Number of Cylinders	4	

- Meets U.S. EPA Tier 4 Final, EU Stage V, and Korea Tier 4 Final emission standards.
- Net power advertised is the power available at the flywheel when engine is equipped with fan, air cleaner, CEM exhaust gas aftertreatment, alternator, and cooling fan running at intermediate speed.
- Recommended for use up to 4500 m (14,760 ft) altitude with engine power derate above 3000 m (9,840 ft).
- Rated speed 2,200 rpm.

⁽¹⁾Cat engines are compatible with the following renewable, alternative, and bio-fuels* with lower greenhouse gas emission impact:

- ✓ Up to B20 biodiesel (FAME)**
- ✓ Up to 100% HVO and GTL renewable fuels

*Refer to guidelines for successful application. Please consult your Cat dealer or "Caterpillar Machine Fluids Recommendations" (SEBU6250) for details.

**For use of higher blends, consult your Cat dealer.

Transmission

Forward/Reverse		
1st Gear	10 km/h	6.2 mph
2nd Gear	35 km/h	21.7 mph
Creeper Speed		
1st Gear	5.5 km/h	3.4 mph
2nd Gear	15 km/h	9.3 mph
Drawbar Pull	104 kN	23,380 lbf
Maximum Gradeability at (19 500 kg/42,990 lb)	61.0%	

Service Refill Capacities

Fuel Tank (total capacity)	470 L	124.2 gal
Diesel Exhaust Fluid Tank	30 L	7.9 gal
Cooling System	31.7 L	8.4 gal
Engine Oil	13 L	3.4 gal
Hydraulic Tank	155 L	40.9 gal
Hydraulic System (including tank)	270 L	71.3 gal
Rear Axle Housing (differential)	14 L	3.7 gal
Front Steering Axle (differential)	10.5 L	2.8 gal
Final Drive (each)	2.5 L	0.7 gal
Powershift Transmission	2.5 L	0.7 gal

Swing Mechanism

Maximum Swing Speed	9.2 rpm	
Maximum Swing Torque	52.5 kN·m	38,722 lbf·ft

Undercarriage

Ground Clearance	360 mm	14.2 in
Maximum Steering Angle	35°	
Oscillation Axle Angle	± 8.5°	
Minimum Turning Radius		
Outside of Tire	6600 mm	21.6 ft
Outside of Tire (Plastic Fender)	7900 mm	25.9 ft
End of One-Piece Boom	9200 mm	30.2 ft
End of Variable Adjustable Boom	7500 mm	24.6 ft

Operating Weights*

Minimum	18 800 kg	41,450 lb
Maximum	21 200 kg	46,740 lb

Typical configurations:

Variable Adjustable Boom**		
Rear Blade Only	19 500 kg	42,990 lb
Blade and Outriggers	20 500 kg	45,190 lb
Front and Rear Outriggers	20 600 kg	45,410 lb
One-Piece Boom **		
Rear Blade Only	19 050 kg	42,000 lb
Blade and Outriggers	20 050 kg	44,200 lb
Front and Rear Outriggers	20 150 kg	44,420 lb

*Operating weight includes full fuel tank, operator, bucket 700 kg (1,543 lb) and dual pneumatic tires. Weight varies depending on configuration.

**Typical configurations include 2500 mm (8'2") stick, 3600 kg (7,937 lb) counterweight, bucket and 220 kg (485 lb) quick coupler.

M320 Wheeled Excavator Specifications

Major Component Weights

Boom (including VA and stick cylinder, pins and standard hydraulic lines):		
One-Piece Boom 5650 mm (18'6")	2280 kg	5,030 lb
Variable Adjustable Boom 5260 mm (17'3")	2720 kg	6,000 lb
Sticks (including cylinder, bucket linkage, pins and standard hydraulic lines):		
Stick 2500 mm (8'2")	990 kg	2,180 lb
Stick 2900 mm (9'6")	1040 kg	2,290 lb
Counterweights:		
3600 kg (7,937 kg) Counterweight	3600 kg	7,940 lb
4200 kg (9,259 kg) Counterweight	4200 kg	9,260 lb
Undercarriage (including axles, standard tires and steps):		
Rear Blade	4960 kg	10,930 lb
Rear Blade/Front Outrigger	5970 kg	13,160 lb
Rear Outrigger/Front Blade	5970 kg	13,160 lb
Rear Outrigger/Front Outrigger	6150 kg	13,560 lb
Buckets:		
Pin-On Bucket GD 1.0 m ³ (1.31 yd ³)	700 kg	1,540 lb
CW Bucket GD 1.0 m ³ (1.31 yd ³)	700 kg	1,540 lb
Quick Couplers:		
CW30 Dedicated Quick Coupler	220 kg	490 lb
Pin Grabber Quick Coupler	380 kg	840 lb

Hydraulic System

Maximum Pressure – Implement Circuit		
Normal	35 000 kPa	5,076 psi
Heavy Lift	37 000 kPa	5,366 psi
Travel Circuit	35 000 kPa	5,076 psi
Maximum Pressure – Auxiliary Circuit		
High Pressure	35 000 kPa	5,076 psi
Medium Pressure	17 000 kPa	2,466 psi
Swing Mechanism	39 500 kPa	5,729 psi
Maximum Flow		
Implements	306 L/min	81 gal/min
Travel Circuit	235 L/min	62 gal/min
Auxiliary Circuit		
High Pressure	250 L/min	66.0 gal/min
Medium Pressure	55 L/min	14.5 gal/min
Swing Mechanism	90 L/min	23.8 gal/min
Cylinders		
Boom Cylinder (VA) – Bore	130 mm	0'5"
Boom Cylinder (VA) – Stroke	906 mm	2'12"
VAB cylinder – Bore	160 mm	0'6"
VAB cylinder – Stroke	731 mm	2'5"
Boom Cylinder (1 PC) – Bore	130 mm	0'5"
Boom Cylinder (1 PC) – Stroke	906 mm	2'12"
Stick Cylinder (VA) – Bore	130 mm	0'5"
Stick Cylinder (VA) – Stroke	1205 mm	3'11"
Stick Cylinder (1 PC) – Bore	140 mm	0'6"
Stick Cylinder (1 PC) – Stroke	1205 mm	3'11"
Bucket Cylinder – Bore	110 mm	0'4"
Bucket Cylinder – Stroke	1077 mm	3'6"

Tires

Standard	10.00 – 20 (dual pneumatic)
Optional	11.00 – 20 (dual pneumatic) 315/70R22.5 (dual pneumatic without spacer) 445/70/R19.5 TL XF (single pneumatic)

M320 Wheeled Excavator Specifications

Dozer Blade

Blade Type	Parallel	
Width	2540 mm	8'4"
Blade Roll-Over Height	570 mm	1'10"
Blade Total Height	610 mm	2'0"
Maximum Lowering Depth From Ground	130 mm	0'5"
Maximum Raising Height Above Ground	495 mm	1'7"

Emissions and Safety

Engine Emissions	Tier 4 Final and Stage V	
Vibration Levels		
Maximum Hand/Arm (ISO 5349-2001)	<2.5 m/s ²	<8.2
Maximum Whole Body (ISO/TR 25398:2006)	<0.5 m/s ²	<1.6
Seat Transmissibility Factor (ISO 7096:2000-spectral class EM5)	<0.7	

Standards

Brakes	ISO 3450:2011
Cab (ROPS)	ISO 12117-2:2008
FOPS (Falling Object Protective Structure)	ISO 10262:1998
Cab/Sound Levels	Meets appropriate standards as listed below

Sound Performance

Operator Sound	
2000/14/EC	70 dB(A)
Spectator Sound	
2000/14/EC	99 dB(A)

- Operator Sound – The operator sound level is measured according to the procedures specified in 2000/14/EC, for a cab offered by Caterpillar, when properly installed and maintained and tested with the door and windows closed.
- Exterior Sound – The labeled spectator sound power level is measured according to the test procedures and conditions specified in 2000/14/EC.
- Hearing protection may be needed when operating with an open operator station and cab (when not properly maintained for doors/windows open) for extended periods or in noisy environment(s).

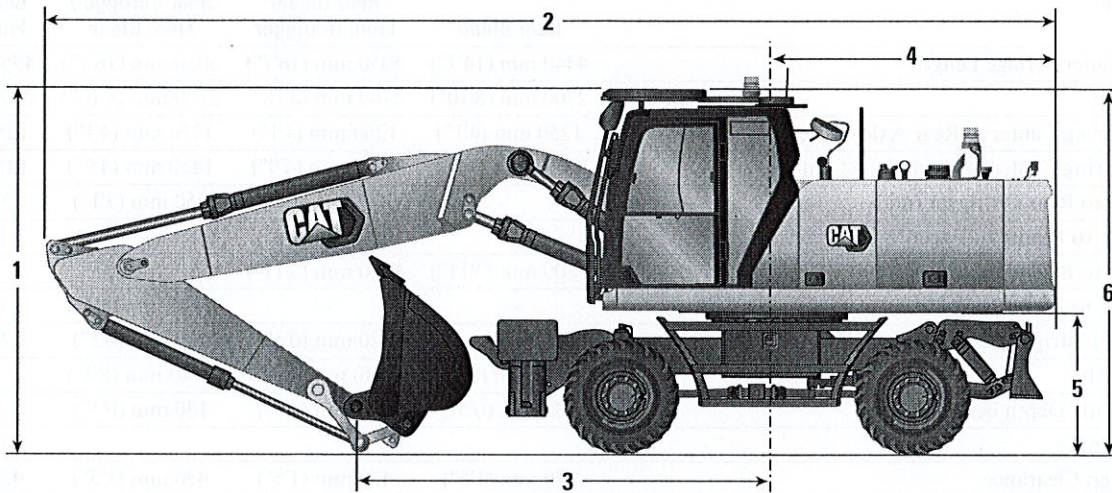
Air Conditioning System

The air conditioning system on this machine contains the fluorinated greenhouse gas refrigerant R134a (Global Warming Potential = 1430). The system contains 0.85 kg of refrigerant which has a CO₂ equivalent of 1.216 metric tonnes.

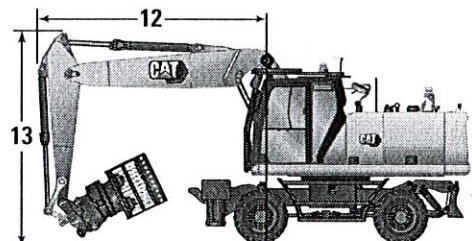
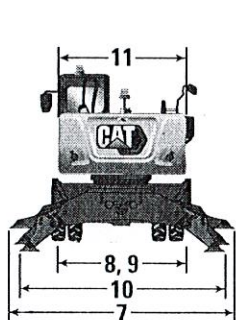
M320 Wheeled Excavator Specifications

Dimensions

All Dimensions are approximate. Values are with 10.00-20 Dual Pneumatic Tires.



Boom Options	Variable Adjustable Boom 5260 mm (17'3")		One-Piece Boom 5650 mm (18'6")	
	Bucket Linkage 2500 mm (8'2")	Bucket Linkage 2900 mm (9'6")	Bucket Linkage 2500 mm (8'2")	Bucket Linkage 2900 mm (9'6")
Stick Options				
1 Shipping Height with Falling Object Guard (highest point between boom and cab)	3370 mm (11'1")	3370 mm (11'1")	3370 mm (11'1")	3370 mm (11'1")
Shipping Height without FOGS	3360 mm (11'0")	3490 mm (11'5")	3230 mm (10'7")	3340 mm (10'11")
2 Shipping Length	8925 mm (29'3")	8875 mm (29'1")	9325 mm (30'7")	9300 mm (30'6")
3 Support Point	3580 mm (11'9")	3420 mm (11'3")	3820 mm (12'6")	3610 mm (11'10")
4 Tail Swing Radius	2600 mm (8'6")	2600 mm (8'6")	2600 mm (8'6")	2600 mm (8'6")
5 Counterweight Clearance	1306 mm (4'3")	1306 mm (4'3")	1306 mm (4'3")	1306 mm (4'3")
6 Cab Height				
No Falling Object Guard	3199 mm (10'6")	3199 mm (10'6")	3199 mm (10'6")	3199 mm (10'6")
With Falling Object Guard	3361 mm (11'0")	3361 mm (11'0")	3361 mm (11'0")	3361 mm (11'0")
Overall Machine Width				
7 Width with outriggers on ground	3820 mm (12'6")	3820 mm (12'6")	3820 mm (12'6")	3820 mm (12'6")
8 Width with outriggers up	2540 mm (8'4")	2540 mm (8'4")	2540 mm (8'4")	2540 mm (8'4")
9 Width with blade	2540 mm (8'4")	2540 mm (8'4")	2540 mm (8'4")	2540 mm (8'4")
10 Width with Outriggers Fully Down	3650 mm (12'0")	3650 mm (12'0")	3650 mm (12'0")	3650 mm (12'0")
Enclosure Height (Doors)	2506 mm (8'3")	2506 mm (8'3")	2506 mm (8'3")	2506 mm (8'3")
11 Upperframe Width	2540 mm (8'4")	2540 mm (8'4")	2540 mm (8'4")	2540 mm (8'4")
Roading Position				
12 Steering Wheel to Linkage in Roading Position	3040 mm (10'0")	3040 mm (10'0")	—	—
13 Height in Roading Position	3970 mm (13'0")	3970 mm (13'0")	—	—



M320 Wheeled Excavator Specifications

Undercarriage Dimensions

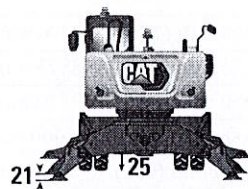
All Dimensions are approximate. Values are with 10.00-20 Dual Pneumatic Tires.

Undercarriage	Rear Blade	Rear Blade/ Front Outrigger	Rear Outrigger/ Front Blade	Rear Outrigger/ Front Outrigger
14 Overall Undercarriage Length	4440 mm (14'7")	5050 mm (16'7")	5050 mm (16'7")	4955 mm (16'3")
15 Wheel Base	2700 mm (8'10")	2700 mm (8'10")	2700 mm (8'10")	2700 mm (8'10")
16 Swing Bearing Center to Rear Axle Center	1250 mm (4'1")	1250 mm (4'1")	1250 mm (4'1")	1250 mm (4'1")
17 Swing Bearing Center to Front Axle Center	1450 mm (4'9")	1450 mm (4'9")	1450 mm (4'9")	1450 mm (4'9")
18 Rear Axle to Rear Outrigger (mid)	—	—	950 mm (3'1")	950 mm (3'1")
19 Front Axle to Front Outrigger (mid)	—	750 mm (2'6")	—	—
20 Rear Axle to Blade (end)	1200 mm (3'11")	1200 mm (3'11")	—	—
Front Axle to Blade (end)	—	—	1245 mm (4'1")	—
21 Maximum Outrigger Depth below Ground	—	120 mm (0'5")	120 mm (0'5")	120 mm (0'5")
22 Blade Width	2540 mm (8'4")	2540 mm (8'4")	2540 mm (8'4")	—
Maximum Blade Depth below Ground	130 mm (0'5")	130 mm (0'5")	130 mm (0'5")	—
Ground Clearance				
Lowest Step Clearance	420 mm (1'5")	420 mm (1'5")	420 mm (1'5")	420 mm (1'5")
23 Outrigger Clearance	325 mm (1'1")	325 mm (1'1")	325 mm (1'1")	325 mm (1'1")
24 Blade Clearance (parallel)	495 mm (1'7")	495 mm (1'7")	495 mm (1'7")	495 mm (1'7")
25 Axle Clearance	360 mm (1'2")	360 mm (1'2")	360 mm (1'2")	360 mm (1'2")

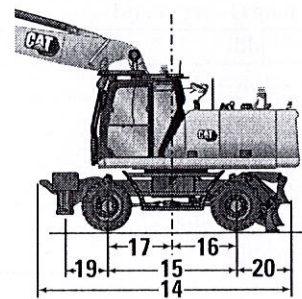
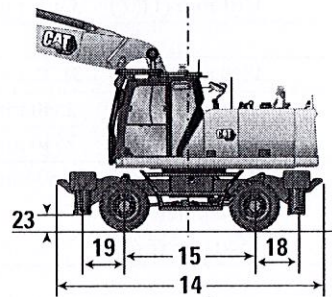
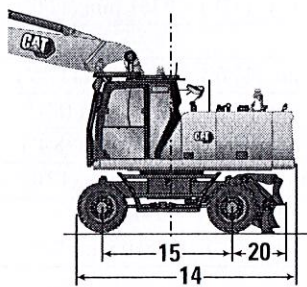
*Maximum tire clearance with outrigger fully down



Undercarriage with dozer only



Undercarriage with 2 sets of outriggers

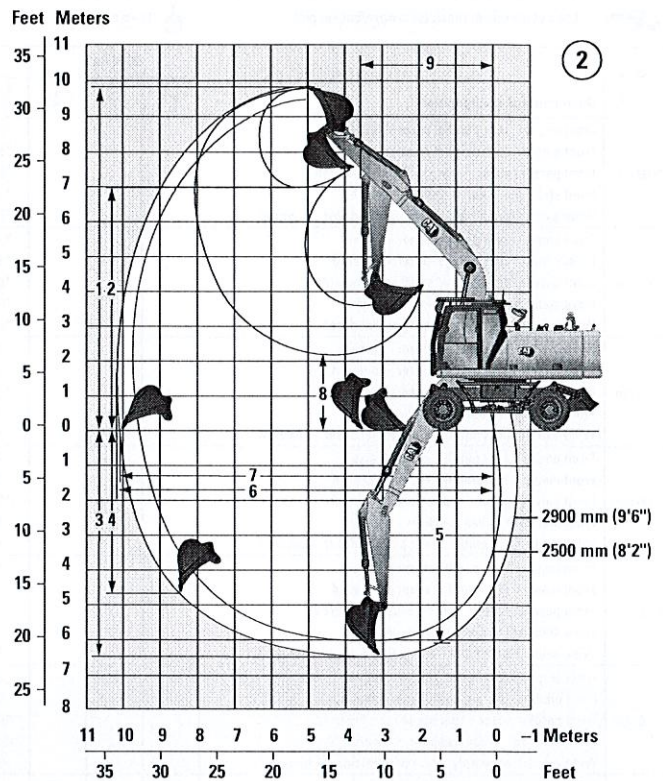
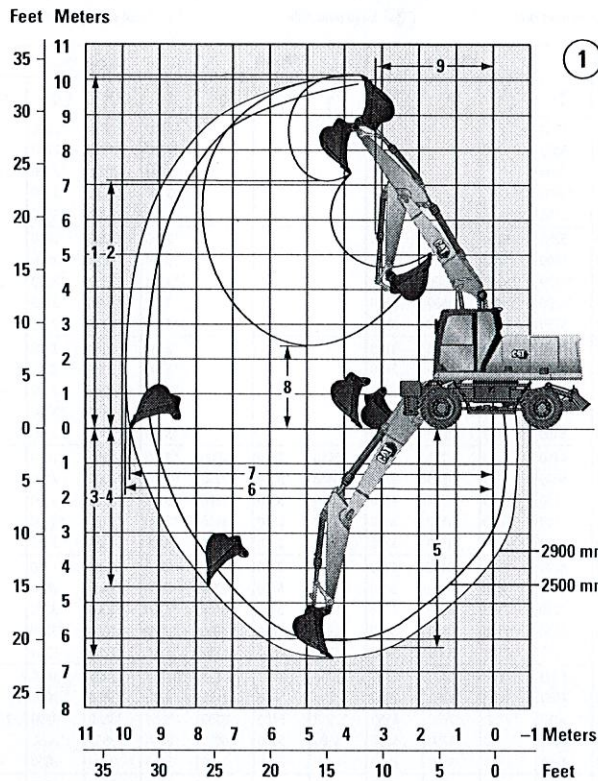


Undercarriage with 1 set of outriggers and dozer

M320 Wheeled Excavator Specifications

Working Ranges

All Dimensions are approximate. Values are with 10.00-20 Dual Pneumatic Tires.



Boom Options

Variable Adjustable Boom
5260 mm (17'3")

One-Piece Boom
5650 mm (18'6")

Stick Options

	①		②	
	Bucket Linkage 2500 mm (8'2")	Bucket Linkage 2900 mm (9'6")	Bucket Linkage 2500 mm (8'2")	Bucket Linkage 2900 mm (9'6")
1 Maximum Cutting Height	9950 mm (32'8")	10 240 mm (33'7")	9550 mm (31'4")	9790 mm (32'1")
2 Maximum Loading Height	6960 mm (22'10")	7250 mm (23'9")	6680 mm (21'11")	6910 mm (22'8")
3 Maximum Digging Depth	6030 mm (19'9")	6430 mm (21'1")	6000 mm (19'8")	6400 mm (21'0")
4 Maximum Vertical Wall Digging Depth	4230 mm (13'11")	4670 mm (15'4")	4250 mm (13'11")	4740 mm (15'7")
5 Maximum Depth Cut for 2440 mm (8'0") Level Bottom	5930 mm (19'5")	6330 mm (20'9")	5800 mm (19'0")	6220 mm (20'5")
6 Maximum Reach	9470 mm (31'1")	9850 mm (32'4")	9820 mm (32'3")	10 190 mm (33'5")
7 Maximum Reach at Ground Line	9290 mm (30'6")	9680 mm (31'9")	9640 mm (31'8")	10 030 mm (32'11")
8 Minimum Loading Height	2810 mm (9'3")	2420 mm (7'11")	2790 mm (9'2")	2390 mm (7'10")
9 Minimum Front Swing Radius	3180 mm (10'5")	3300 mm (10'10")	3620 mm (11'11")	3610 mm (11'10")
Bucket Forces (ISO)	137 kN 30,799 (lbf)	137 kN 30,799 (lbf)	137 kN 30,799 (lbf)	137 kN 30,799 (lbf)
Stick Forces (ISO)	92 kN 20,682 (lbf)	83 kN 18,659 (lbf)	106 kN 23,830 (lbf)	96 kN 21,582 (lbf)
Bucket Type	GD	GD	GD	GD
Bucket Capacity	0.98 m ³ (1.28 yd ³)	0.98 m ³ (1.28 yd ³)	0.98 m ³ (1.28 yd ³)	0.98 m ³ (1.28 yd ³)
Bucket Tip Radius (Pin-On)	1462 mm (4'10")	1462 mm (4'10")	1462 mm (4'10")	1462 mm (4'10")
Bucket Tip Radius (QC)	1535 mm (5'0")	1535 mm (5'0")	1535 mm (5'0")	1535 mm (5'0")

Range values are with dual pneumatic tires (10.00-20).

Range values are calculated with a GD bucket (CW) and CW-30 quick coupler with a tip radius of 1535 mm (5'0").

Force values are calculated with heavy lift on, a GD bucket (pin-on) and a tip radius of 1462 mm (4'10").

M320 Wheeled Excavator Specifications

Lift Capacities – Variable Adjustable Boom 2500 mm Stick

All values are in kg, work tool: none, bucket cylinder and bucket linkage installed, counterweight: 3600 kg, heavy lift function on.

Stick length	Undercarriage configuration	Load at maximum reach (sticknose/bucket pin)			Load over front			Load over rear			Load over side			Load point height			
		3000 mm	4500 mm	6000 mm	7500 mm	3000 mm	4500 mm	6000 mm	7500 mm	3000 mm	4500 mm	6000 mm	7500 mm	mm			
7500 mm	Front empty – rear parallel dozer – raised				*5800	*5800	5250							*3700	*3700	*3700	5430
	Front empty – rear parallel dozer – lowered				*5800	*5800	*5800							*3700	*3700	*3700	
	Front parallel dozer – rear stabilizer – lowered				*5800	*5800	*5800							*3700	*3700	*3700	
	Front stabilizer – rear stabilizer – lowered				*5800	*5800	*5800							*3700	*3700	*3700	
	Wide axle – front empty – rear parallel dozer – lowered				*5800	*5800	5750							*3700	*3700	*3700	
6000 mm	Front empty – rear parallel dozer – raised				*6200	*6200	5250	5250	4000	3200				*3250	*3250	2650	6660
	Front empty – rear parallel dozer – lowered				*6200	*6200	5800	5200	*5500	3550				*3250	*3250	2900	
	Front parallel dozer – rear stabilizer – lowered				*6200	*6200	*6200	*5500	*5500	5300				*3250	*3250	*3250	
	Front stabilizer – rear stabilizer – lowered				*6200	*6200	*6200	*5500	*5500	*5500				*3250	*3250	*3250	
	Wide axle – front empty – rear parallel dozer – lowered				*6200	*6200	5750	5250	4050	3550				*3250	*3250	2900	
4500 mm	Front empty – rear parallel dozer – raised				*7150	6250	4950	5150	3900	3100				*3100	2650	2100	7440
	Front empty – rear parallel dozer – lowered				*7150	*7150	5500	5100	*6000	3450				*3100	*3100	2350	
	Front parallel dozer – rear stabilizer – lowered				*7150	*7150	*7150	*6000	*6000	5200				*3100	*3100	*3100	
	Front stabilizer – rear stabilizer – lowered				*7150	*7150	*7150	*6000	*6000	*6000				*3100	*3100	*3100	
	Wide axle – front empty – rear parallel dozer – lowered				*7150	6250	5450	5150	3900	3400				*3100	2700	2350	
3000 mm	Front empty – rear parallel dozer – raised				7650	5750	4450	4900	3700	2900	3450	2550	2000	*3100	2350	1850	7840
	Front empty – rear parallel dozer – lowered				7650	*8600	5000	4900	*6550	3250	3450	*5350	2250	*3100	*3100	2100	
	Front parallel dozer – rear stabilizer – lowered				*8600	*8600	7750	*6550	*6550	4950	*5350	*5350	3500	*3100	*3100	*3100	
	Front stabilizer – rear stabilizer – lowered				*8600	*8600	*8600	*6550	*6550	5950	*5350	*5350	4150	*3100	*3100	*3100	
	Wide axle – front empty – rear parallel dozer – lowered				7700	5750	4950	4950	3700	3200	3450	2600	2250	*3100	2400	2050	
1500 mm	Front empty – rear parallel dozer – raised				7150	5250	4000	4650	3450	2700	3350	2500	1950	3050	2250	1750	7930
	Front empty – rear parallel dozer – lowered				7100	*9800	4550	4650	*7100	3050	3350	5400	2200	3050	*3300	2000	
	Front parallel dozer – rear stabilizer – lowered				*9800	*9800	7250	*7100	*7100	4700	*5650	5450	3400	*3300	*3300	3100	
	Front stabilizer – rear stabilizer – lowered				*9800	*9800	8850	*7100	*7100	5700	*5650	5600	4050	*3300	*3300	*3300	
	Wide axle – front empty – rear parallel dozer – lowered				7200	5250	4450	4700	3500	3000	3350	2500	2150	3100	2250	1950	
0 mm	Front empty – rear parallel dozer – raised				6850	5000	3750	4500	3300	2550	3300	2400	1850	3150	2300	1800	7720
	Front empty – rear parallel dozer – lowered				6850	*10 000	4300	4500	*7250	2900	3250	5350	2100	3150	*3650	2000	
	Front parallel dozer – rear stabilizer – lowered				*10 000	*10 000	6950	*7250	*7250	4550	*5500	5400	3300	*3650	*3650	3200	
	Front stabilizer – rear stabilizer – lowered				*10 000	*10 000	8600	*7250	*7250	5500	*5500	5500	4000	*3650	*3650	*3650	
	Wide axle – front empty – rear parallel dozer – lowered				6900	5000	4200	4550	3300	2850	3300	2400	2100	3150	2300	2000	
-1500 mm	Front empty – rear parallel dozer – raised	*9300	*9300	6850	6800	4900	3700	4450	3250	2500				3500	2550	2000	7190
	Front empty – rear parallel dozer – lowered	*9300	*9300	7950	6800	*9250	4250	4450	*6800	2850				3450	*4350	2250	
	Front parallel dozer – rear stabilizer – lowered	*9300	*9300	*9300	*9250	*9250	6900	*6800	*6800	4500				*4350	*4350	3500	
	Front stabilizer – rear stabilizer – lowered	*9300	*9300	*9300	*9250	*9250	8500	*6800	*6800	5450				*4350	*4350	4250	
	Wide axle – front empty – rear parallel dozer – lowered	*9300	*9300	7800	6850	4950	4150	4500	3250	2800				3500	2550	2200	
-3000 mm	Front empty – rear parallel dozer – raised				6900	5000	3800	4550	3350	2600				4300	3200	2450	6240
	Front empty – rear parallel dozer – lowered				6900	*7450	4300	4500	*5150	2900				4300	*4650	2800	
	Front parallel dozer – rear stabilizer – lowered				*7450	*7450	7000	*5150	*5150	4600				*4650	*4650	4350	
	Front stabilizer – rear stabilizer – lowered				*7450	*7450	*7450	*5150	*5150	*5150				*4650	*4650	*4650	
	Wide axle – front empty – rear parallel dozer – lowered				6950	5050	4250	4550	3350	2900				4350	3200	2750	

* Limited by hydraulic rather than tipping load.

Oscillating axle needs to be locked. Weight of all lifting accessories must be subtracted from the lifting capacities. All lift capacities calculated and rated per ISO 10567:2007. Rated loads do not exceed 87% of hydraulic lift capacity or 75% of tipping load. Heavy Lift Function ON. Lifting capacities are based on the machine standing on a firm uniform supporting surface. The load point is the center line of the bucket pivot mounting pin on the stick. Lift capacity is calculated with VA cylinder completely extracted. The use of a work tool attachment point to handle/lift objects, could affect the machine lift performance.

Always refer to the appropriate Operation and Maintenance Manual for specific product information.

M320 Standard and Optional Equipment

Standard and Optional Equipment

Standard and optional equipment may vary. Consult your Cat dealer for details.

	Standard	Optional		Standard	Optional
ENGINE			HYDRAULIC SYSTEM		
Cat C4.4 Twin Turbo diesel engine (meets Tier 4 Final/Stage V emission standards)	✓		Boom, stick and bucket drift reduction valves	✓	
Power mode selector	✓		Boom/stick lowering check valves		✓
One-touch low idle with automatic engine speed control	✓		Overload warning	✓	
Automatic engine idle shutdown	✓		Electronic main control valve	✓	
Work up to 3000 m (9,842 ft) above sea level without engine power de-rating	✓		Automatic hydraulic oil warm up	✓	
52°C (125°F) high-ambient cooling capacity	✓		Element type main hydraulic filter	✓	
Cold starting capability for -18°C (0°F)	✓		One-slider joysticks	✓	
Double element air filter	✓		Two-slider joysticks		✓
Electric fuel priming pump	✓		Advanced Tool Control (one/two way high-pressure flow)	✓	
On-demand electric cooling fans with auto-reverse function	✓		Second high pressure auxiliary circuit (one/two way high-pressure flow)		✓
Biodiesel capability up to B20	✓		Medium pressure auxiliary circuit (one/two way medium-pressure flow)		✓
			Heavy lift mode	✓	
			Quick coupler circuit for Cat Pin Grabber and CW-type coupler	✓	
			SmartBoom™		✓
			Ride control		✓
			Cat TRS support		✓
			Joystick steering		✓
			Separate dedicated swing pump	✓	
			Automatic swing brake	✓	
			Cat BIO HYDO Advanced biodegradable hydraulic oil		✓
			Adjustable hydraulic aggressiveness	✓	
			Electronic pattern changer	✓	

(continued on next page)

M320 Standard and Optional Equipment

Standard and Optional Equipment (continued)

Standard and optional equipment may vary. Consult your Cat dealer for details.

	Standard	Optional		Standard	Optional
UNDERCARRIAGE AND STRUCTURES			BOOM, STICKS AND LINKAGES		
All wheel drive	✓		5650 mm (18'6") One-Piece boom		✓
Automatic brake/axle lock	✓		5260 mm (17'3") Variable Adjustable boom		✓
Creeper speed	✓		2500 mm (8'2") stick		✓
Electronic swing and travel lock	✓		2900 mm (9'6") stick		✓
Heavy-duty axles, advanced disc brake system and travel motor, adjustable braking force	✓		Bucket linkage, 320-family with lifting eye		✓
Oscillating front axle, lockable, with remote greasing point	✓		Bucket linkage, 320-family without lifting eye		✓
10.00-20 16 PR, dual tires		✓	ELECTRICAL SYSTEM		
11.00-20- 16 PR, dual tires		✓	LED lights on boom and cab	✓	
315/70R22.5, no gap dual tires ⁽¹⁾		✓	LED lights on chassis (left-hand, right-hand) and counterweight	✓	
445/70R 19.5, single tires		✓	Programmable time-delay LED working lights	✓	
Steps with tool box in undercarriage (left and right)		✓	Rooding and indicator lights, front and rear	✓	
Two-piece drive shaft	✓		Maintenance free batteries	✓	
Two speed hydrostatic transmission	✓		Centralized electrical disconnect switch	✓	
Rear blade (parallel) undercarriage		✓	Electrical refueling pump		✓
Rear blade (parallel) undercarriage wide axle gauge		✓			
Rear blade (parallel)/front outrigger undercarriage		✓			
Rear blade (parallel)/front outrigger undercarriage wide axle gauge		✓			
Rear outrigger/front blade (parallel) undercarriage		✓			
Rear outrigger/front outrigger undercarriage		✓			
Fenders, front and rear, synthetic		✓			
Travel restraint bracket for grapple/clamshell		✓			
3600 kg (7,937 kg) counterweight ⁽¹⁾		✓			
4200 kg (9,259 lb) counterweight		✓			

(continued on next page)

⁽¹⁾Available in Europe only.

M320 Standard and Optional Equipment

Standard and Optional Equipment *(continued)*

Standard and optional equipment may vary. Consult your Cat dealer for details.

	Standard	Optional		Standard	Optional
TECHNOLOGY			SAFETY AND SECURITY		
Cat Product Link™	✓		Rear and right-side-view cameras	✓	
Remote Flash capability	✓		360° visibility		✓
Remote Troubleshoot capability	✓		Wide angle mirrors	✓	
Compatibility with radios and base stations from Trimble		✓	Heated and remotely adjustable mirrors		✓
Capability to install 3D grade systems from Trimble		✓	Travel alarm		✓
Cat Grade with 2D		✓	Signal/warning horn	✓	
Cat Grade with Advanced 2D		✓	Rotating beacon on cab and chassis		✓
Cat Grade with 3D		✓	Cat Asset tracker		✓
Cat Payload		✓	Neutral lever (lock out) for all controls	✓	
2D E-Fence		✓	Ground-level accessible secondary engine shutoff switch in cab	✓	
SERVICE AND MAINTENANCE			Bluetooth receiver	✓	
Sampling ports for Scheduled Oil Sampling (S-O-S SM)	✓		Anti-skid plate and countersunk bolts on service platform	✓	
Automatic lubrication system for implement and swing system		✓			

M320 Attachments

Dealer Installed Kits and Attachments

Attachments may vary. Consult your Cat dealer for details.

CAB

- 75 mm (3") retractable seat belt

SAFETY AND SECURITY

- Bluetooth® key fob

GUARDS

- Falling object guard system (not compatible with cab light cover, rain protector)
- Mesh guard full front (not compatible with cab light cover, rain protector)

M320 Cab Options

Cab Options

	Deluxe	Premium
Sound-suppressed ROPS cab	●	●
Heated seat with air-adjustable suspension	●	X
Heated and cooled seat with automatic adjustable suspension	X	●
Height-adjustable console, infinite with no tool	●	●
High-resolution 254 mm (10") LCD touchscreen monitor	●	●
Mechanical mirror	●	X
Electrical and adjustable heated mirror	X	●
Automatic bi-level air conditioner	●	●
Jog dial and shortcut keys for monitor control	●	●
Keyless push-to-start engine control	●	●
51 mm (2") orange seat belt	●	●
Unfastened seat belt warning	●	●
Bluetooth integrated radio (including USB, aux port and microphone)	●	●
2 x 12V DC outlets	●	●
Document storage	●	●
Cup and bottle holders	●	●
Openable two-piece front window (laminated)	●	○
Fixed one-piece front window (P5A classified)	X	○
Parallel wiper with washer	●	●
Fixed glass skylight	●	●
LED dome lights	●	●
Foot illumination	●	●
Roller rear sunscreen	X	●
Rear window emergency exit	●	●
Washable floor mat	●	●
Beacon ready	●	●
Falling Object Guard Structure (FOGS) "ready"	●	●
Vandalism guard "ready"	●	●
Two LED cab lights	●	●
Rainvisor	●	●

● Standard

○ Optional

X Not available

For more complete information on Cat products, dealer services, and industry solutions, visit us on the web at www.cat.com

© 2021 Caterpillar
All rights reserved

Materials and specifications are subject to change without notice. Featured machines in photos may include additional equipment. See your Cat dealer for available options.

CAT, CATERPILLAR, LET'S DO THE WORK, their respective logos, "Caterpillar Corporate Yellow," the "Power Edge" and Cat "Modern Hex" trade dress as well as corporate and product identity used herein, are trademarks of Caterpillar and may not be used without permission.

AEXQ2902-01 (12-2021)
Replaces AEXQ2902
Build Number: 07B
(N Am, Eur, Aus-NZ, S Korea)



Effective with sales to the first user on or after June 1, 2015

CATERPILLAR LIMITED WARRANTY

For Selected Machine Models Designated by Caterpillar with 12 Month/Unlimited Hour Warranty

Worldwide

Caterpillar Inc. or any of its subsidiaries ("Caterpillar") warrants the following products sold by it to be free from defects in material and workmanship:

- New earthmoving, construction, material handling, forestry product, paving product, compact wheel loader, mini hydraulic excavator, skid steer loader, multi terrain loader, and compact track loader machines designated by Caterpillar as having 12-months/unlimited hour warranty. See your Cat® dealer for a complete listing of covered models.

- Attachments/work tools installed on such machines prior to delivery (unless covered by the Cat Work Tool warranty statement or another manufacturer's warranty). Hammer tool points and compacting plates used on hydraulic hammers are not warranted.

An additional warranty against breakage is applicable to certain Cat ground engaging tools. An additional warranty against wear is applicable to all landfill compactor tips when used in residential waste landfills. Refer to the applicable warranty statements for coverage detail.

This warranty does not apply to:

- Cat Batteries
- Mobil-trac bells, rubber tracks used on multi terrain loaders, compact track loaders, and mini hydraulic excavators
- Cat Work Tools
- Select models designated by Caterpillar that are sold in India and China

These products are covered by other Caterpillar warranties. This warranty is subject to the following:

Warranty Period

For new machines and work tools/attachments the warranty period is 12-months/unlimited hours, starting from date of delivery to the first user.

Note:

- For hydraulic line's quick connect/disconnect components sold on compact wheel loaders, mini hydraulic excavators, skid steer loaders, multi terrain loaders, and compact track loader machines, the warranty period is 50 hours starting from the date of delivery to the first user.
- For Draglines, Electric Rope Shovels, Hard Rock Movers, Hard Rock Feeders; the warranty period is not to exceed 24 months from shipment of the last major component from the Caterpillar place of manufacture.

Caterpillar Responsibilities

If a defect in material or workmanship is found during the warranty period, Caterpillar will, during normal working hours and at a place of business of a Cat dealer or other source approved by Caterpillar:

- Provide (at Caterpillar's choice) new, remanufactured, or Caterpillar approved repaired parts or assembled components needed to correct the defect.

Note: New, remanufactured, or Caterpillar approved replacement parts provided under the terms of this warranty are warranted for the remainder of the warranty period applicable to the product in which installed as if such parts were original components of that product. Items replaced under this warranty become the property of Caterpillar.

- Replace lubricating oil, filters, antifreeze, and other service items made unusable by the defect.
- Provide reasonable and customary labor needed to correct the defect.

User Responsibilities

The user is responsible for:

- Providing proof of delivery date to the first user.

- Labor costs, except as stated under "Caterpillar Responsibilities."
- Transportation costs, except as stated under "Caterpillar Responsibilities."
- Premium or overtime labor costs.
- Parts shipping charges in excess of those that are considered usual and customary.
- Local taxes, if applicable.
- Costs to investigate complaints, unless the problem is caused by a defect in Caterpillar material or workmanship.
- Giving timely notice of a warrantable failure and promptly making the product available for repair.
- Performance of the required maintenance (including use of proper fuel, oil, lubricants, and coolant) and items replaced due to normal wear and tear.
- Allowing Caterpillar access to all electronically stored data.

Limitations

Caterpillar is not responsible for:

- Failures resulting from any use or installation that Caterpillar judges improper.
- Failures resulting from attachments, accessory items, and parts not sold or approved by Caterpillar.
- Failures resulting from abuse, neglect, and/or improper storage or repair.
- Failures resulting from user's delay in making the product available after being notified of a potential product problem.
- Failures resulting from unauthorized repair or adjustments, and unauthorized fuel setting changes.

(Continued on the reverse side....)

This warranty covers every major component of the products. Claims under this warranty should be submitted to a place of business of a Cat dealer or other source approved by Caterpillar. For further information concerning either the location to submit claims or Caterpillar as the issuer of this warranty, write Caterpillar Inc., 100 N. E. Adams St., Peoria, IL USA 61629.

Caterpillar's obligations under this Limited Warranty are subject to, and shall not apply in contravention of, the laws, rules, regulations, directives, ordinances, orders, or statutes of the United States, or of any other applicable jurisdiction, without recourse or liability with respect to Caterpillar.

A) For products operating outside of Australia, Fiji, Nauru, New Caledonia, New Zealand, Papua New Guinea, the Solomon Islands, and Tahiti, the following is applicable:

NEITHER THE FOREGOING EXPRESS WARRANTY NOR ANY OTHER WARRANTY BY CATERPILLAR, EXPRESS OR IMPLIED, IS APPLICABLE TO ANY ITEM CATERPILLAR SELLS THAT IS WARRANTED DIRECTLY TO THE USER BY ITS MANUFACTURER.

THIS WARRANTY IS EXPRESSLY IN LIEU OF ANY OTHER WARRANTIES, EXPRESS OR IMPLIED, INCLUDING ANY WARRANTY OF MERCHANTABILITY OR FITNESS FOR A PARTICULAR PURPOSE, EXCEPT CATERPILLAR EMISSION-RELATED COMPONENTS WARRANTY FOR NEW ENGINES, WHERE APPLICABLE. REMEDIES UNDER THIS WARRANTY ARE LIMITED TO THE PROVISION OF MATERIAL AND SERVICES, AS SPECIFIED HEREIN.

CATERPILLAR IS NOT RESPONSIBLE FOR INCIDENTAL OR CONSEQUENTIAL DAMAGES.

CATERPILLAR EXCLUDES ALL LIABILITY FOR OR ARISING FROM ANY NEGLIGENCE ON ITS PART OR ON THE PART OF ANY OF ITS EMPLOYEES, AGENTS, OR REPRESENTATIVES IN RESPECT OF THE MANUFACTURE OR SUPPLY OF GOODS OR THE PROVISION OF SERVICES RELATING TO THE GOODS.

IF OTHERWISE APPLICABLE, THE VIENNA CONVENTION ON CONTRACTS FOR THE INTERNATIONAL SALE OF GOODS IS EXCLUDED IN ITS ENTIRETY.

B) For products operating in Australia, Fiji, Nauru, New Caledonia, New Zealand, Papua New Guinea, the Solomon Islands, and Tahiti, the following is applicable:

THIS WARRANTY IS IN ADDITION TO WARRANTIES AND CONDITIONS IMPLIED BY STATUTE AND OTHER STATUTORY RIGHTS AND OBLIGATIONS THAT BY ANY APPLICABLE LAW CANNOT BE EXCLUDED, RESTRICTED OR MODIFIED ("MANDATORY RIGHTS"). ALL OTHER WARRANTIES OR CONDITIONS, EXPRESS OR IMPLIED (BY STATUTE OR OTHERWISE), ARE EXCLUDED, WITHOUT LIMITING THE FOREGOING PROVISIONS OF THIS PARAGRAPH, WHERE A PRODUCT IS SUPPLIED FOR BUSINESS PURPOSES, THE CONSUMER GUARANTEES UNDER THE CONSUMER GUARANTEES ACT 1993 (NZ) WILL NOT APPLY.

NEITHER THIS WARRANTY NOR ANY OTHER CONDITION OR WARRANTY BY CATERPILLAR, EXPRESS OR IMPLIED (SUBJECT ONLY TO THE MANDATORY RIGHTS), IS APPLICABLE TO ANY ITEM CATERPILLAR SELLS THAT IS WARRANTED DIRECTLY TO THE USER BY ITS MANUFACTURER.

IF THE MANDATORY RIGHTS MAKE CATERPILLAR LIABLE IN CONNECTION WITH SERVICES OR GOODS, THEN TO THE EXTENT PERMITTED UNDER THE MANDATORY RIGHTS, THAT LIABILITY SHALL BE LIMITED AT CATERPILLAR'S OPTION TO (a) IN THE CASE OF SERVICES, THE SUPPLY OF THE SERVICES AGAIN OR THE PAYMENT OF THE COST OF HAVING THE SERVICES SUPPLIED AGAIN AND (b) IN THE CASE OF GOODS, THE REPAIR OR REPLACEMENT OF THE GOODS, THE SUPPLY OF EQUIVALENT GOODS, THE PAYMENT OF THE COST OF SUCH REPAIR OR REPLACEMENT OR THE ACQUISITION OF EQUIVALENT GOODS.

CATERPILLAR EXCLUDES ALL LIABILITY FOR OR ARISING FROM ANY NEGLIGENCE ON ITS PART OR ON THE PART OF ANY OF ITS EMPLOYEES, AGENTS OR REPRESENTATIVES IN RESPECT OF THE MANUFACTURE OR SUPPLY OF GOODS OR THE PROVISION OF SERVICES RELATING TO THE GOODS.

CATERPILLAR IS NOT LIABLE FOR INCIDENTAL OR CONSEQUENTIAL DAMAGES UNLESS IMPOSED UNDER MANDATORY RIGHTS. IF OTHERWISE APPLICABLE, THE VIENNA CONVENTION (CONTRACTS FOR THE INTERNATIONAL SALE OF GOODS) IS EXCLUDED IN ITS ENTIRETY.

C) For products supplied in Australia:

IF THE PRODUCTS TO WHICH THIS WARRANTY APPLIES ARE:

- I. PRODUCTS OF A KIND ORDINARILY ACQUIRED FOR PERSONAL, DOMESTIC OR HOUSEHOLD USE OR CONSUMPTION; OR
- II. PRODUCTS THAT COST AUD 40,000 OR LESS,

WHERE THOSE PRODUCTS WERE NOT ACQUIRED FOR THE PURPOSE OF RE-SUPPLY OR FOR THE PURPOSE OF USING THEM UP OR TRANSFORMING THEM IN THE COURSE OF PRODUCTION OR MANUFACTURE OR IN THE COURSE OF REPAIRING OTHER GOODS OR FIXTURES, THEN THIS SECTION C APPLIES.

THE FOLLOWING MANDATORY TEXT IS INCLUDED PURSUANT TO THE AUSTRALIAN CONSUMER LAW AND INCLUDES REFERENCES TO RIGHTS THE USER MAY HAVE AGAINST THE DIRECT SUPPLIER OF THE PRODUCTS: OUR GOODS COME WITH GUARANTEES THAT CANNOT BE EXCLUDED UNDER THE AUSTRALIAN CONSUMER LAW. YOU ARE ENTITLED TO A REPLACEMENT OR REFUND FOR A MAJOR FAILURE AND COMPENSATION FOR ANY OTHER REASONABLY FORESEEABLE LOSS OR DAMAGE. YOU ARE ALSO ENTITLED TO HAVE THE GOODS REPAIRED OR REPLACED IF THE GOODS FAIL TO BE OF ACCEPTABLE QUALITY AND THE FAILURE DOES NOT AMOUNT TO A MAJOR FAILURE. THE INCLUSION OF THIS TEXT DOES NOT CONSTITUTE ANY REPRESENTATION OR ACCEPTANCE BY CATERPILLAR OF LIABILITY TO THE USER OR ANY OTHER PERSON IN ADDITION TO THAT WHICH CATERPILLAR MAY HAVE UNDER THE AUSTRALIAN CONSUMER LAW.

TO THE EXTENT THE PRODUCTS FALL WITHIN THIS SECTION C BUT ARE NOT OF A KIND ORDINARILY ACQUIRED FOR PERSONAL, DOMESTIC OR HOUSEHOLD USE OR CONSUMPTION, CATERPILLAR LIMITS ITS LIABILITY TO THE EXTENT IT IS PERMITTED TO DO SO UNDER THE AUSTRALIAN CONSUMER LAW TO, AT ITS OPTION, THE REPAIR OR REPLACEMENT OF THE PRODUCTS, THE SUPPLY OF EQUIVALENT PRODUCTS, OR THE PAYMENT OF THE COST OF SUCH REPAIR OR REPLACEMENT OR THE ACQUISITION OF EQUIVALENT PRODUCTS.

THE WARRANTY SET OUT IN THIS DOCUMENT IS GIVEN BY CATERPILLAR INC. OR ANY OF ITS SUBSIDIARIES, 100 N. E. ADAMS ST., PEORIA, IL USA 61629, TELEPHONE 1 309 875 1000. THE USER IS RESPONSIBLE FOR ALL COSTS ASSOCIATED WITH MAKING A CLAIM UNDER THE WARRANTY SET OUT IN THIS DOCUMENT, EXCEPT AS EXPRESSLY STATED OTHERWISE IN THIS DOCUMENT, AND THE USER IS REFERRED TO THE BALANCE OF THE DOCUMENT TERMS CONCERNING CLAIM PROCEDURES, CATERPILLAR RESPONSIBILITIES AND USER RESPONSIBILITIES.

TO THE EXTENT PERMISSIBLE BY LAW, THE TERMS SET OUT IN THE REMAINDER OF THIS WARRANTY DOCUMENT (INCLUDING SECTION B) CONTINUE TO APPLY TO PRODUCTS TO WHICH THIS SECTION C APPLIES.

©2014 Caterpillar All Rights Reserved. CAT, CATERPILLAR, their respective logos, "Caterpillar Yellow," the "Power Edge" trade dress as well as corporate and product identity used herein, are trademarks of Caterpillar and may not be used without permission.

CONTROL YOUR COSTS MINIMIZE YOUR RISKS

This plan safeguards your investments in new, used and rebuilt machines beyond the standard warranty period. It includes all parts and labor to protect you against failures caused by defects in materials and workmanship. With the Powertrain Equipment Protection Plan, you can increase the predictability of service and maintenance costs—and reduce unplanned downtime.

WHAT WE DO

- Perform necessary inspections to confirm eligibility
- Install parts approved by Caterpillar on covered repairs
- Validate your enrollment in the program

WHAT YOU DO

- Operate equipment according to the Cat Operation & Maintenance Manual (OMM)
- Have recommended preventive maintenance performed at intervals specified in the OMM
- Upon request, provide proof of preventive maintenance compliance (receipts, copies of work orders, invoices)
- Promptly provide the machine for repair in the event of a covered failure

EXCLUSIONS

If a component is not listed, it may not be included in the plan. Other exclusions include:

- > Improper or abusive use of the machine
- > Lubricating oil, antifreeze, filters, consumables and other maintenance items replaced during the covered component repair, unless such items are rendered unusable by a covered component failure
- > Failures caused by normal wear-out
- > Freight charges for parts shipments
- > Travel time and mileage involved in getting to a job site
- > Hauling costs and / or retrieval costs
- > Overtime labor costs
- > Repair costs resulting from the failure of any non-covered components
- > Downtime loss
- > Equipment rental charges
- > Any incidental / consequential damages or costs incurred as a result of a covered component failure.
- > Modifications unless approved by Caterpillar

Examples of covered and excluded components or items are listed here. The actual dealer contract will govern. For a complete list of included components and more information on Cat Equipment Protection Plans, contact your local Cat dealer.

Hydrostatic Pumps &

Drive Motors
Linkage / lines Connected to
Hystat Pump
Drive (pilot / eh) Control Valves
Bevel and Transfer Case

Brake Transfer Drive & Axles

Axles
Axle Seals
Final Drive & Wheel
Final Drive Case / Bore
Final Drive Chain
Final Drive Gears
Axle Shaft
Drive Axle Oil Pump

Steering

Steering Clutch
Steering Clutch & Brake Control Valve

Hydraulic Systems

Hydraulic Oil Coolers

Camshaft & Camshaft Bearings

Timing / Accessory Gears

Timing Chain / Belt

Inlet / Exhaust Valve

Valve Cover & Base

Valve Spring & Guide

Rocker Arm

Rocker Shaft Assembly

Push Rod

Balancer

Fuel Pump / Governor Drive

Oil Pump

Oil Pan Group

Fan & Fan Drive

Transmission

Transmissions

Hydraulic Controls

Transmission Oil Filter Base

Transmission Gears

Final Drives/Planetary

Drive Shafts

Transfer Case

Engine - Internal Components

Oil Cooler

Manifolds

Fan Motor

Water Pump

Fuel Injection Pumps

Injectors

Lift / Transfer Pump

Senders / Solenoids / Sensors

Thermostat

Flywheel & Torque Converter

Engine Oil Filter Mount

Turbocharger

AC Compressor / Condenser

Electronic Control Modules

Oil Hoses / Lines (non-hydrostatic)

Cylinder Block

Piston

Piston Rings

Piston & Connecting Rod

Crankshaft, Main Bearings & Rod

Bearings



Employment Eligibility Verification

Welcome
Teresa Martin

User ID
TMOR9402

Last Login
09:22 AM - 01/06/2012

Log Out

Click any for help

- Home
- My Cases
- New Case
- View Cases
- Search Cases
- My Profile
- Edit Profile
- Change Password
- Change Security Questions
- My Company
- Edit Company Profile
- Add New User
- View Existing Users
- Close Company Account
- My Reports
- View Reports
- My Resources
- View Essential Resources
- Take Tutorial
- View User Manual
- Contact Us

Company Information

Company Name: Thompson Tractor Co., Inc.

[View / Edit](#)

Company ID Number: 47130

Doing Business As (DBA) Name:

DUNS Number:

Physical Location:

Address 1: 2401 Pinson Highway

Address 2:

City: Birmingham

State: AL

Zip Code: 35217

County: JEFFERSON

Mailing Address:

Address 1: P O. Box 10367

Address 2:

City: Birmingham

State: AL

Zip Code: 35202-0367

Additional Information:

Employer Identification Number: 630377478

Total Number of Employees: 1,000 to 2,499

Parent Organization:

Administrator:

Organization Designation:

Employer Category:

NAICS Code: 423 - MERCHANT WHOLESALERS, DURABLE GOODS

[View / Edit](#)

Total Hiring Sites: 40

[View / Edit](#)

Total Points of Contact: 3

[View / Edit](#)

[View MOU](#)

Company ID Number: 47130

the Employer issues a tentative nonconfirmation based upon a photo non-match. The Employer will determine whether the employee contests the tentative nonconfirmation as soon as possible after the Employer receives it.

4. If the employee contests a tentative nonconfirmation issued by DHS, the Employer will provide the employee with a referral letter and instruct the employee to contact the Department through its toll-free hotline within 8 Federal Government work days.

5. If the employee contests a tentative nonconfirmation based upon a photo non-match, the Employer will provide the employee with a referral letter to DHS. DHS will electronically transmit the result of the referral to the Employer within 10 Federal Government work days of the referral unless it determines that more than 10 days is necessary.

6. The Employer agrees that if an employee contests a tentative nonconfirmation based upon a photo non-match, the Employer will send a copy of the employee's Form I-551 or Form I-766 to DHS for review by:

- Scanning and uploading the document, or
- Sending a photocopy of the document by an express mail account (furnished and paid for by DHS).

7. The Employer understands that if it cannot determine whether there is a photo match/non-match, the Employer is required to forward the employee's documentation to DHS by scanning and uploading, or by sending the document as described in the preceding paragraph, and resolving the case as specified by the Immigration Services Verifier at DHS who will determine the photo match or non-match.

ARTICLE IV

SERVICE PROVISIONS

The SSA and DHS will not charge the Employer for verification services performed under this MOU. The Employer is responsible for providing equipment needed to make inquiries. To access the E-Verify System, an Employer will need a personal computer with Internet access.

ARTICLE V

PARTIES

This MOU is effective upon the signature of all parties, and shall continue in effect for as long as the SSA and DHS conduct the E-Verify program unless modified in writing by the mutual consent of all parties, or terminated by any party upon 30 days prior written notice to the others. Any and all system enhancements to the E-Verify program by DHS or SSA, including but not limited to the E-Verify checking against additional data sources and instituting new verification procedures, will be covered under this MOU and will not cause the need for a supplemental MOU that outlines these changes. DHS agrees to train employers on all changes made to E-Verify through the use of mandatory refresher tutorials and updates to the E-Verify manual. Even

Company ID Number: 47130

**INFORMATION REQUIRED
FOR THE E-VERIFY PROGRAM**

Information relating to your Company:

Company Name: Thompson Tractor Co., Inc.

Company Facility Address: 2401 Pinson Highway
Birmingham, AL 35217

Company Alternate Address: P.O. Box 10367
Birmingham, AL 35202-0367

County or Parish: JEFFERSON

Employer Identification Number: 630377478

North American Industry Classification Systems Code: 423

Parent Company: _____

Number of Employees: 1,000 to 2,499 Number of Sites Verified for: 5

Are you verifying for more than 1 site? If yes, please provide the number of sites verified for in each State.

- GEORGIA 5 site(s)

Information relating to the Program Administrator(s) for your Company on policy questions or operational problems:

Name: **Kimberly A Stark**
Telephone Number: **(205) 849 - 4279** Fax Number: **(205) 849 - 4565**
E-mail Address: **kimberlystark@thompsontractor.com**

Name: **Frank M Wright**
Telephone Number: **(205) 849 - 4267** Fax Number: **(205) 849 - 4854**
E-mail Address: **frankwright@thompsontractor.com**

Request for Taxpayer Identification Number and Certification

Give form to the requester. Do not send to the IRS.

Print or type
See Specific Instructions on page 2.

Name (as shown on your income tax return) Thompson Tractor Co., Inc. DBA Thompson Power Systems, Thompson Lift Truck Co.	
Business name, if different from above and The Cat Rent Store	
Check appropriate box: <input type="checkbox"/> Individual/Sole proprietor <input checked="" type="checkbox"/> Corporation <input type="checkbox"/> Partnership <input type="checkbox"/> Limited liability company. Enter the tax classification (D=disregarded entity, C=corporation, P=partnership) ▶ <input checked="" type="checkbox"/> Exempt payee <input type="checkbox"/> Other (see instructions) ▶	
Address (number, street, and apt. or suite no.) P O Box 10367 2401 Pinson Hwy. Tarrant, AL 35217	Requester's name and address (optional)
City, state, and ZIP code Birmingham, AL 35202-0367	
List account number(s) here (optional) Lockbox Remit To: P O Box 934065, Atlanta, GA 31193-4005	

Part I Taxpayer Identification Number (TIN)

Enter your TIN in the appropriate box. The TIN provided must match the name given on Line 1 to avoid backup withholding. For individuals, this is your social security number (SSN). However, for a resident alien, sole proprietor, or disregarded entity, see the Part I Instructions on page 3. For other entities, it is your employer identification number (EIN). If you do not have a number, see *How to get a TIN* on page 3.

Note. If the account is in more than one name, see the chart on page 4 for guidelines on whose number to enter.

Social security number : : :
or
Employer identification number 63 : 0377478

Part II Certification

Under penalties of perjury, I certify that:

1. The number shown on this form is my correct taxpayer identification number (or I am waiting for a number to be issued to me), and
2. I am not subject to backup withholding because: (a) I am exempt from backup withholding, or (b) I have not been notified by the Internal Revenue Service (IRS) that I am subject to backup withholding as a result of a failure to report all interest or dividends, or (c) the IRS has notified me that I am no longer subject to backup withholding, and
3. I am a U.S. citizen or other U.S. person (defined below).

Certification Instructions. You must cross out item 2 above if you have been notified by the IRS that you are currently subject to backup withholding because you have failed to report all interest and dividends on your tax return. For real estate transactions, item 2 does not apply. For mortgage interest paid, acquisition or abandonment of secured property, cancellation of debt, contributions to an individual retirement arrangement (IRA), and generally, payments other than interest and dividends, you are not required to sign the Certification, but you must provide your correct TIN. See the Instructions on page 4.

Sign Here	Signature of U.S. person ▶ <i>Linda K. Dunbar, Controller</i>	Date ▶
------------------	---	--------

General Instructions

Section references are to the Internal Revenue Code unless otherwise noted.

Purpose of Form

A person who is required to file an information return with the IRS must obtain your correct taxpayer identification number (TIN) to report, for example, income paid to you, real estate transactions, mortgage interest you paid, acquisition or abandonment of secured property, cancellation of debt, or contributions you made to an IRA.

Use Form W-9 only if you are a U.S. person (including a resident alien), to provide your correct TIN to the person requesting it (the requester) and, when applicable, to:

1. Certify that the TIN you are giving is correct (or you are waiting for a number to be issued),
2. Certify that you are not subject to backup withholding, or
3. Claim exemption from backup withholding if you are a U.S. exempt payee. If applicable, you are also certifying that as a U.S. person, your allocable share of any partnership income from a U.S. trade or business is not subject to the withholding tax on foreign partners' share of effectively connected income.

Note. If a requester gives you a form other than Form W-9 to request your TIN, you must use the requester's form if it is substantially similar to this Form W-9.

Definition of a U.S. person. For federal tax purposes, you are considered a U.S. person if you are:

- An individual who is a U.S. citizen or U.S. resident alien,
- A partnership, corporation, company, or association created or organized in the United States or under the laws of the United States,
- An estate (other than a foreign estate), or
- A domestic trust (as defined in Regulations section 301.7701-7).

Special rules for partnerships. Partnerships that conduct a trade or business in the United States are generally required to pay a withholding tax on any foreign partners' share of income from such business. Further, in certain cases where a Form W-9 has not been received, a partnership is required to presume that a partner is a foreign person, and pay the withholding tax. Therefore, if you are a U.S. person that is a partner in a partnership conducting a trade or business in the United States, provide Form W-9 to the partnership to establish your U.S. status and avoid withholding on your share of partnership income.

The person who gives Form W-9 to the partnership for purposes of establishing its U.S. status and avoiding withholding on its allocable share of net income from the partnership conducting a trade or business in the United States is in the following cases:

- The U.S. owner of a disregarded entity and not the entity.