

BID SUBMITTAL FORM
Alabama County Joint Bid Program
BID ITEM – 7.5 Ton Single Drum Vibratory Roller

Company Name: Cowin Equipment Company Inc

Address: 4325 Northern Boulevard

Montgomery Al 36110

Bid Submitted by: John Edwards

(Name of company representative)

Title: Governmental Sales Manager E-mail address: jedwards@cowin.com

Phone: 850-685-7055 Fax: 334-834-2272

By submitting this bid, we agree:

The equipment model number identified below meets the bid specs for this bid item

Initials
JE

That the bid price will be honored for all counties for the period from January 1, 2023 to December 31, 2023.

JE

The equipment will be delivered at the bid price to all counties participating in the joint bid program

JE

The company representative listed above will be the contact person for purchasing this bid item under the joint bid program

JE

The bid is accompanied by a current catalog or model specification document for the model number identified below

JE

The bid is accompanied by a copy of the manufacturer's standard warranty as required in the bid specifications

JE

The bid includes the e-verify documentation required by Alabama law

JE

If awarded the bid, a performance bond will be provided upon request

JE

The bid documents include the **Manufacturer's Suggested Retail Price Sheet (MSRP) for the Standard Machine**

JE

7.5 Ton Single Drum Vibratory Roller

Total Bid Price for Standard Machine: \$ 110,694⁰⁰
(Total Bid Price for Standard Machine Includes Freight Preparation, Delivery and Standard Warranty Costs) *

Freight Preparation and Delivery: \$ 1,500⁰⁰
(Included in Standard Machine Bid Price)

Manufacturer's Suggested Retail Price for Standard Machine: \$ 118,060⁰⁰

Equipment Model #: Volvo SD75B

Description: Single Drum Vibratory Roller

Signature of company representative submitting bid: John Edwards

Title: Governmental Sales Manager

***NOTE:** Award will be made based on the total cost of the **Standard Machine**. The total cost of the standard machine is to include the freight preparation, delivery and standard warranty cost. Freight preparation, delivery will be excluded from the total bid price of the standard machine in determining the percentage discount for any available options.

**BID SUBMITTAL FORM: OPTION COST SHEET
7.5 Ton Single Drum Vibratory Roller**

By submitting this bid, we agree:

To offer any available options at the percent difference between the Manufacturer's Suggested Retail Price Sheet and the actual bid price on the Standard Machine*

JE

The bid documents include the Manufacturer's Suggested Retail Price Sheet (MSRP) with **any available Options** for the Standard Machine

JE

Equipment Model #: Volvo SD75

Description: Single Drum Vibratory Roller

Signature of company representative submitting bid: John Edwards

Title: Governmental Sales Manager

***NOTE:** The percent difference between the **Manufacturer's Suggested Retail Price Sheet (MSRP)** for the standard machine as specified by these **Bid Specifications** and the actual price bid by the vendor will be calculated to determine the percentage discount to be applied to any available options. The bid price of the freight preparation, delivery cost shall be excluded in determining the percentage discount to be applied to available options. Any individual county may choose to add any available option to the standard machine at the percentage discount at the time of purchase.

INVITATION TO BID HEAVY EQUIPMENT

NOTICE OF BID OPENING

NOTICE IS HEREBY GIVEN that the Association of County Commissions of Alabama, which administers the Alabama County Joint Bid Program on behalf of Alabama's county governing bodies, shall receive and open bids for the purchase of zero (0) or more items of heavy road equipment at its office located at 2 North Jackson Street, Montgomery, Alabama, at **10:00 a.m. on Friday, October 7, 2022**. Bid specifications are available at <http://www.alabamacounties.org/heavy-equipment/> for each of the following items:

Backhoes	Ride-on Industrial Boom Mowers
Tractors	Asphalt Distributor Truck
Track Mount Excavators	Chip Spreader
Compact Track Mount Excavators	Rubber Tire Roller
Mini Track Excavator	7.5 Ton Single Drum Vibratory Roller
Wheeled Excavators	One-man Pothole Patchers
Highway Speed Truck Excavators	Trailer Mounted Patchers
Motor Graders	Trailer Mount Mastic Patcher/Crack Sealer
Heavy Duty Hydrostatic Bulldozers	Half Round End Dump Trailer
Mulching Dozer	Lowboy Trailers
Wheel Loaders	Road Wideners and Attachments
Heavy Duty Dump Chassis	16' Steel Dump Bodies (Automatic and Manual)
Lowboy Tractors	
Skid Steer Loader w/no Attachments	
Skid Steer Attachments	

Time is of the essence in submitting bids and only bids received in the Association office by 10:00 a.m. Central Time on Friday, October 7, 2022 will be opened and considered. Bidders and any other interested individuals are invited to attend the bid opening.

NOTICE OF BID OPENING PROCEDURES

All bids for **Heavy Equipment** will be opened and the name(s) of the bidders read aloud on the morning of the bid opening on Friday, **October 7, 2022 at 10:00 a.m.** at 2 North Jackson Street, Montgomery, AL. The specifics of each bid submitted will be compiled by the Association staff thereafter and will be available, **upon written or emailed request**, one week after the bid opening. Requests should be emailed to jointbid@alabamacounties.org.

THE INVITATION PACKAGE

The invitation package for each item to be bid includes: this invitation to bid, the written bid specifications for the particular item of heavy road equipment, and a Bid Submittal Form to be used in submitting a bid for that particular item. Bidders should verify that they have received all pages of the invitation package. If there are any omissions, the bidder should contact **Kenya Howard** in the Association office by mail, fax, or e-mail (jointbid@alabamacounties.org) to request missing pages. It is the responsibility of the bidder to make this request in sufficient time to prepare and submit the bid in time for the bid opening. Bidders should carefully read and comply with all parts of the invitation package, including all attachments and/or any addendum.

PREPARING AND SUBMITTING BIDS

All bids must be typed or hand written in ink on the attached Bid Submittal Form. **The completed Bid Submittal Form shall be placed in front of and separated from all other documents included in the bid packet, such that it will be the first document viewed upon opening the bid packet.**

Bids submitted in pencil and bids not submitted on the Bid Submittal Form will **not** be considered. All bids shall include a current catalog or model specification document for the equipment model number being offered for consideration. Bids submitted without such documentation will **not** be considered. Only information contained on the attached Bid Submittal Form and in the model specification document will be considered in evaluating bids.

Each separate requirement in the bid specification includes a block for indicating whether or not the item bid meets the specification. The bidder shall indicate compliance with each requirement by checking "Yes" or "No" in the block to the right of each bid specification. In addition, the bidder shall indicate the page number in the supplied manufacturer's equipment literature on which compliance with the specification can be verified. Failure to complete this portion of the bid form may result in the subject bid not being considered.

Each bid for one of the heavy equipment items included in the bid package must be submitted on the Bid Submittal Form for that item and forwarded in a separate envelope with the bid item and item number clearly identified on the outside of the envelope. Envelopes containing a "no bid" shall also include the words "NO BID" on the outside of the envelope. Facsimiles and e-mails will not be accepted. Bids submitted by "Express/Overnight" services must be in a separate inner envelope or package sealed and identified as stated above. All bids must be received in the Association office prior to the bid opening. Bids received after the deadline will be returned unopened.

The County Joint Bid Program reserves the right to require a performance bond from successful bidders as permitted under Alabama law. However, **no bid bond is required for this bid offering.**

All bids should be mailed or hand-delivered to:

**ATTN: Joint Bid Program
Association of County Commissions of Alabama
2 North Jackson Street, FL 7, Montgomery, Alabama 36104 (Physical Address)
P.O. Box 5040, Montgomery, Alabama 36103 (Mailing Address)**

BID SPECIFICATIONS

Please note that each piece of heavy equipment available for bid may include several different sizes and categories of machines. You should read each set of specifications very carefully as the differences vary depending upon the piece and size of equipment.

The award will be based on the total cost of the **Standard Machine** bid by the lowest responsible bidder. Each Bid shall include a **Manufacturer's Suggested Retail Price Sheet (MSRP)** for each machine bid. The percent difference between the Manufacturer's Suggested Retail Price (MSRP) for the standard machine as specified by these bid specifications and the actual price bid by the vendor will be calculated and that percentage discount shall be applied to any options an individual county may choose to add to the machine.

Once the bids have been awarded, any county participant purchasing under this program may, at its discretion, add any of the vendor's available options at the same discount off the Manufacturer's Suggested Retail Price Sheet as was applied to the Standard Machine Price Bid.

Any use of specific names and/or model numbers in the attached specifications is not intended to restrict the bidder or any seller or manufacturer, but is included solely for the purpose of indicating the type, size, and quality of materials, product services, or equipment considered best adapted to the use of the counties participating in the joint bid program.

ACQUISITION AND FINANCING OPTIONS

The awarded Vendor will provide the equipment, including any options required by the purchaser, at the awarded price as contracted through the Joint Bid Program. The purchaser may secure its own financing to acquire the equipment or execute any financial options available under Alabama law with the awarded Vendor in order to acquire the equipment.

BIDDER QUALIFICATIONS

All bidders and all program participants must be in compliance with any applicable federal, state, county and municipal laws, regulations, resolutions and ordinances, including but not limited to, licensing, permitting, and taxation requirements. All bidders should be prepared to submit evidence or documentation as proof that they are properly licensed and permitted under any applicable laws upon request. Such evidence or documentation may be submitted with the bid. Additionally, all bidders shall provide proof that they are in compliance with the e-verify requirements of Alabama's Immigration Law (Ala. Code § 31-13-1 et seq., as amended by Act No. 2012-491).

BID AWARD

The Houston County Commission will serve as the awarding authority for all bids and will award all contracts at a regular meeting of the Houston County Commission. Any and all bids submitted in compliance with this invitation to bid shall be considered, and award will be made to the lowest responsible bidder meeting bid specifications as determined by the awarding authority in compliance with Alabama law. All bids will be reviewed and evaluated by a committee created for that purpose, which committee will make comments and recommendations to the awarding authority regarding the award. All factors contained in each invitation package will be evaluated in determining the successful bidder, and any omissions of the stated requirements may be cause for rejection of the bid submitted. The awarding authority reserves the

right to reject any and all bids, to waive any informality in bids, and to accept in whole or in part such bid or bids solely at its discretion.

The contract period will be one year with an option to renew for a second and third year under identical price, terms, and conditions upon the mutual consent of the vendor and the awarding authority. Any renewal contract shall be approved in writing by the vendor and the awarding authority no later than 90 days prior to the expiration of the existing contract.

CONTACT REGARDING BIDS AND INVITATION

Contact initiated by a potential bidder with any county official, county employee, or member of the Association staff shall only be as specifically set out in this Invitation to Bid. Any questions related to the bid or the County Joint Bid Program shall be directed to Association staff in writing under the procedures set out in this Invitation to Bid. Additionally, a bidder may contact the Association in writing to request an appointment to review bid specifications following the bid opening. **However, there shall be no communication with any county official or county employee regarding this bid between the date of this invitation and the date of bid award.** Any contact other than as set out here shall be deemed as an attempt to unduly influence the bid award, and shall be grounds for rejection of the bid submitted by the bidder initiating such other contact.

Any questions or problems related to downloading or obtaining copies of this Invitation to Bid should be directed to **Kenya Howard** at jointbid@alabamacounties.org or **334-263-7594**.

Any other questions or requests for additional information regarding this invitation or the bid specifications shall be submitted **in writing** no later than five (5) days prior to bid opening to:

**ATTN: Patrick McDougald
Association of County Commissions of Alabama
P.O. Box 5040
Montgomery, Alabama 36104**

OR

**Patrick McDougald
E-mail: barbeng@bellsouth.net**

**BID SPECIFICATIONS
FOR
BID ITEM – 7.5 Ton Single Drum Vibratory Roller**

GENERAL

These specifications shall be construed as the minimum acceptable standards for a **7.5 Ton Single Drum Vibratory Roller**. Should the manufacturer's current published data or specifications exceed these standards, the manufacturer's standards shall be considered minimum and shall be furnished. All integral parts not specifically mentioned in the scope of these specifications that are necessary to provide a complete working unit shall be furnished. Additionally, the machine offered for bid shall include all standard manufacturer's equipment. The roller must be a new current production model. The roller must be a new current production model and shall meet all EPA and other applicable standards at the time of manufacture.

The use of specific names and numbers in the specifications is not intended to restrict the bidder or any seller or manufacturer but is intended solely for the purpose of indicating the type, size, and quality of equipment considered best adapted to the uses of counties participating in this joint bid.

BID SUBMITTAL FORM

Each bidder must submit his or her bid on the Bid Submittal Form included in the invitation to bid package. All written warranties to be submitted shall be attached to the Bid Submittal Form.

BID PRICE

The price bid shall include all destination charges, delivery charges, title fees, rebates, and all other applicable costs and refunds.

MANUALS

Each unit shall be provided with one (1) copy of the operator's manual, (1) copy of the repair manual and one (1) copy of the current parts manual. Units will not be accepted for delivery until the manuals as outlined above are received by the purchaser.

REPLACEMENT PARTS AVAILABILITY

Parts must be available for 5 years or 7,500 hours of use for the piece of equipment bid. If replacement parts are not delivered within three (3) working days of an order being placed, the bidder will deliver an equivalent machine for the county to use at no cost to the county until such time as the parts are delivered to the county so it can affect repairs to its machine.

WARRANTY

Bidders shall submit a copy of the manufacturer's standard warranty. Warranty shall include service response time of maximum of 36 hours within notification by county.

Yes No
Page# _____
or
Attachment

ENGINE

Four (4) cylinder, four (4) stroke cycle, water cooled and turbocharged diesel engine, capable of developing a minimum of 75 horsepower.
Minimum 50 gal. fuel tank.

Yes No
Page # 14

WEIGHT (STANDARD OPERATING)

The factory specified operating weight only. No additional weights may be added for the purpose of meeting these specifications.
Minimum 14,800 lbs. standard.

Yes No
Page # 14

STARTING SYSTEM

Unit shall be equipped with a 24 volt electrical system.

Yes No
Page # 14
12 volt

DRIVE

Infinitely variable hydrostatic drive system on both rear wheels and drum. Rear drive shall have a limited slip axle.

Yes No
Page # 14

DRUM

Drum shall be smooth with an adjustable drum scraper. Drum width shall be 66 in.

Yes No
Page # 15

Drum shall be vibratory with two (2) amplitude settings and have the following minimum specifications for each setting:

Frequency High Frequency 2,160vpm/Low Amplitude 1,850 vpm

Yes No
Page # 14

Centrifugal Force High Amplitude 25,625 lbs/Low Amplitude 16,200 lbs

Yes No
Page # 14

Nominal Amplitude High Amplitude 0.066 inches/Low Amplitude 0.031 inches

Yes No
Page # 14

BRAKES

Service brakes – Hydrostatic

Yes No
Page # 14

Parking brake.

Yes No
Page # 14

TIRES

Minimum 8 ply 14.9 x 24 lug-type tires that track within drum width.

Yes No
Page # 14

OPERATOR'S PLATFORM

Unit shall include: ROPS Canopy; vibration isolated, anti-slip operator platform; lockable instrument panel cover; emergency stop; horn; hour-meter; Gauges and/or warning lights for fuel level, coolant temperature, engine oil pressure, engine temperature, and charging system; adjustable seat with seatbelt; rear view mirrors; and safety rail.

Yes No
Page # 15

OTHER FEATURES

Unit shall also include: Hydraulic pressure check points;

Yes No
Page # option

lockable hood;

Yes No
Page # option

oil level sight gauges;

Yes No
Page # option

backup alarm;

Yes No
Page # option

battery master switch;

Yes No
Page # option

slow moving vehicle sign;

Yes No
Page # option

rotating beacon mounted on ROPS.

Yes No
Page # option

Model: Volvo SD75B Compactor

Description	Article	MSRP
Volvo SD75B Compactor	SD75B	\$93,255
Smooth Drum Installation	SD12101	\$8,991
Premium Bumper Installation	SD14001	\$0
Scraper for Smooth Drum	SD15004	\$1,361
Diamond tire with ballast (4PR R3 tires)	SD20001	\$0
Wheel Assembly	SD22001	\$0
North American Engine	SD37001	\$0
Standard Hood Installation	SD38001	\$0
Cooling Package w/Reverse Fan	SD39001	\$934
Volvo ROPS/FOPS	SD41007	\$5,844
Vandal cover	SD44001	\$320
Steering Knob	SD42002	\$98
Ultra-Grade traction enhancement system	SD61003	\$5,390
No Tow Valve Feature	SD61004	\$0
Standard Hydraulic Filter	SD65001	\$0
English Manual	SD74028	\$0
Caretrack GSM/GPS De-Active Satellite	SD91010	\$0
CareTrack 4 YR Subscr	SD91011	\$0
No blade	SD82003	\$0
Inside scraper option	SD83001	\$1,431
Remote Hyd Test Port	SD85023	\$437
North American Decals	SD86031	\$0
FRAME LIFETIME GUARANTEE	SD89801	\$0
TOTAL PRICE STANDARD SPECIFICATION		\$118,060

VOLVO

Volvo Construction Equipment North America Warranty – Disclaimers – Limitations Limited Warranty for Governmental / Municipalities

Volvo Construction Equipment North America (“Volvo CE”) hereby extends to its authorized dealers (“Dealer”) and the Dealer’s Governmental / Municipalities customers (“Customer”, and both Dealer and Customer are referred to herein as a “Buyer”), who purchase a new Volvo construction equipment machine (“Machine”) or new Volvo part (“Part”, both of which are referred to herein as a “Product”) from Volvo, the following limited warranty:

Subject to the exceptions and limitations set forth below, Volvo CE or Dealer will repair or replace any part of a new Machine or new Part which proves to be defective in material or workmanship during the following periods (the “Warranty Period”):

- Volvo wheel loaders: 12 months/2500 hours, whichever first occurs
- Volvo articulated haulers: 12 months/2500 hours, whichever first occurs
- Volvo hydraulic excavators: 12 months/2500 hours, whichever first occurs
- Volvo motor graders: 12 months/2500 hours, whichever first occurs
- Volvo compactors: 12 months/1500 hours, whichever first occurs
24 months unlimited hours on DD90 and larger compactors
- Volvo pavers: 12 months/1500 hours, whichever first occurs
24 months unlimited hours on 6000 / 7000 series pavers
- Volvo milling: 12 months/1500 hours, whichever first occurs
- Volvo compact wheel loaders (up to 100 net hp.): 12 months/unlimited hours
- Volvo skid steer loaders: 12 months/unlimited hours; Lifetime arm for one-sided
- Volvo compact hydraulic excavators (less than 11 metric tons): 12 months/unlimited hours
- Volvo backhoe loaders: 12 months/unlimited hours
- Volvo engines: 12 months/2500 hours, whichever first occurs
- Volvo parts: 6 months/1500 hours, whichever first occurs
- Volvo remanufactured components: 12 months/2500 hours, whichever first occurs
- Volvo Attachments: 12 months

The Warranty Period commences immediately following the delivery of said Product to the Buyer who first puts said Product into use. The foregoing limited warranty shall include the labor cost to accomplish the repair or replacement of the defective part provided that the repair or replacement was performed by a Dealer.

The foregoing warranty does not cover: (i) any Product found to have been damaged by abuse, accident, other casualty or a failure to maintain or use the warranted Product in accordance with the applicable manuals or instructions (Buyer is required to use only original equipment manufacturer filters during the Warranty Period); (ii) the labor costs to repair or replace defective Parts after the expiration of the Warranty Period of the Machine in which such Part is located; (iii) overtime labor premiums; (iv) costs and expenses associated with the transportation of Dealer’s service personnel to and from the location of the warranted Product; (v) any parts, components, attachments or accessories for which Buyer receives a separate warranty by the manufacturer or producer thereof (in specified cases said warranty may be administered by Volvo CE); (vi) maintenance items or ground engaging parts that have achieved their normal service life.

DISCLAIMER OF IMPLIED WARRANTIES AND LIMITATION OF REMEDIES

THE FOREGOING WARRANTY TO BUYER IS EXCLUSIVE AND IS IN LIEU OF ALL OTHER WARRANTIES, EXPRESSED OR IMPLIED, AND THERE IS NO IMPLIED WARRANTY OF MERCHANTABILITY OR FITNESS FOR A PARTICULAR PURPOSE.

REMEDIES AVAILABLE TO BUYER ARE LIMITED TO MAKING A CLAIM UNDER THE FOREGOING WARRANTY AND ARE EXCLUSIVE AND EXPRESSLY LIMITED TO OBTAINING THE PARTS AND LABOR IN ACCORDANCE WITH THE TERMS OF SAID WARRANTY.

Warranty – Disclaimers – Limitations

LIMITATIONS OF LIABILITY AND DAMAGES

Regardless of whether a claim against Volvo CE or Dealer is based on the foregoing warranty or is an action in contract, tort (negligence or strict liability) or otherwise, their respective liability for losses, damages or expenses of any kind arising from the design, manufacture, repair or sale of the Products is limited, unless otherwise prohibited by law, to an amount not exceeding the cost performing the obligations contained in the foregoing warranty, and in no event shall their respective or joint liability exceed the value of the Product or part thereof giving rise to such liability.

CONSEQUENTIAL AND SIMILAR DAMAGES NOT RECOVERABLE

Except for performing the obligations of the foregoing warranty in accordance with its terms, Volvo CE and Dealer shall have no liability for loss, damage, or expense, directly or indirectly, attributable to a loss of use of a Product, loss or damage to property other than the Product, loss or damage to the Product or any part thereof or any other economic or commercial loss, including, without limitation, lost profits or special or consequential damages (except liability for any type of consequential damages which by law may not be disclaimed). The parties intend that this prohibition against consequential and similar damages will survive and be effective even if the limitation of remedies in the foregoing sections is found to fail of its essential purpose under section 2-719 of the Uniform Commercial Code.

ALLOCATION OF RISK

The foregoing warranty disclaimers, limitations of liability and limitation of remedies are bargained allocations of risks among (i) the Customer who purchased the Product; (ii) the Dealer who sold the Product, and (iii) Volvo CE, which is a third party beneficiary of the contract of sale between the Customer and the Dealer. The Buyer of the Product accepts the foregoing warranty and the other bargained for allocations of risk as part of the agreed price for the purchase of the Product to which the foregoing warranty applies. Volvo CE is prepared to offer different warranties and other allocations of risk for other prices. However, any such change in the warranty or the allocation of risks must be confirmed in writing by Volvo CE.

STATUTE OF LIMITATIONS

Any action by a Buyer of a Product for breach of contract, for breach of warranty arising under, or for a cause of action arising out of the sale of a Product, whether based on contract, tort (negligence or strict liability) or otherwise, shall be commenced within one (1) year after the cause of action has accrued. Any such cause of action shall be deemed to have accrued at the earlier of (i) the discovery of the defect or breach, or (ii) the expiration of the applicable Warranty Period.

Volvo Construction Equipment
Building Tomorrow



SD75B, SD115B

Volvo Single Drum Compactors 7-11.8 t / 15,430-26,000 lb 74-147 hp

John Edwards
Governmental Sales Manager
jedwards@cowin.com
850-685-7055



A passion for performance

At Volvo Construction Equipment, we're not just coming along for the ride. Developing products and services that raise productivity – we are confident we can lower costs and increase profits for customers around the globe. Part of the Volvo Group, we are passionate about innovative solutions to help you work smarter – not harder.

Helping you to do more

Doing more with less is a trademark of Volvo Construction Equipment. High productivity has long been married to low energy consumption, ease of use and durability. When it comes to lowering life-cycle costs, Volvo is in a class of its own.

Designed to fit your needs

There is a lot riding on creating solutions that are suited to the particular needs of different industry applications. Innovation often involves high technology – but it doesn't always have to. Some of our best ideas have been simple, based on a clear and deep understanding of our customers' working lives.



You learn a lot in 180 years

Over the years, Volvo has advanced solutions that have revolutionized the use of construction equipment. No other name speaks Safety louder than Volvo. Protecting operators, those around them and minimizing our environmental impact are traditional values that continue to shape our product design philosophy.

We're on your side

We back the Volvo brand with the best people. Volvo is truly a global enterprise, one that is on standby to support customers quickly and efficiently – wherever they are.

We have a passion for performance.

A strong, dedicated, capable dealer network

Our dealers are strategically located throughout North America to provide the equipment you need and the parts and service support you demand for a productive and profitable operation.

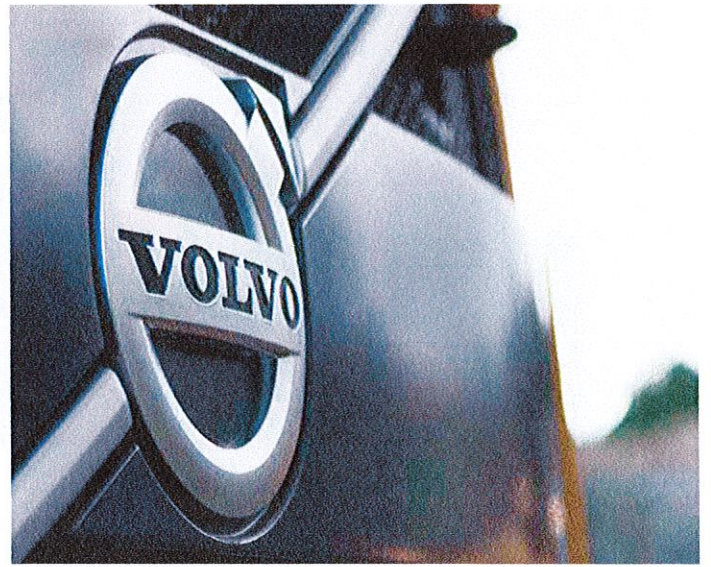
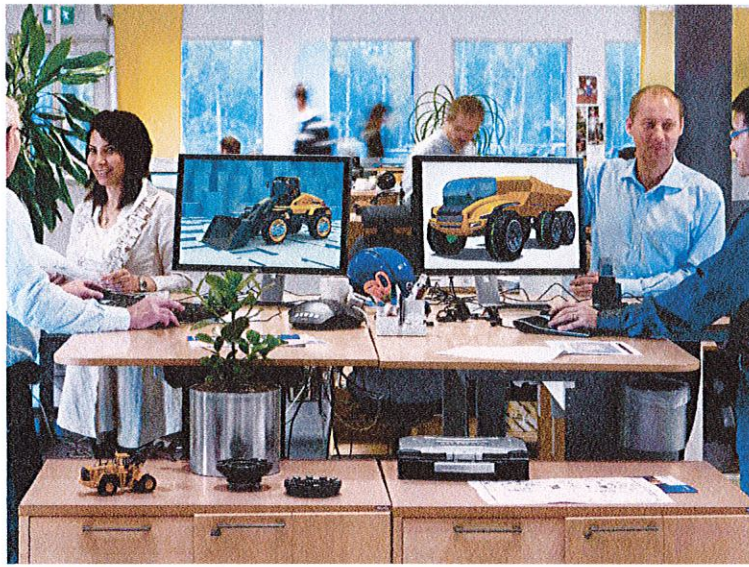
The strength of our dealer network is enhanced with extensive individualized product support training at our best-in-class Customer Center in Shippensburg and through hands-on training. Using a great Product Demonstration Center featuring a dedicated area for most common applications, visitors operate equipment from our entire product line under a variety of simulated working conditions. This facility is in year-round use by our dealers and customers.

Building the best starts right here.

The products designed and manufactured by Volvo Construction Equipment have their beginnings at the most advanced Research & Design centers in the industry. Volvo CE machines are designed in 11 R&D centers and produced in 15 manufacturing facilities across the world.

The major R&D center and manufacturing plant in the Americas is located in Shippensburg, Pennsylvania. This facility has been in operation for over 30 years and – with its recently added 200,000 sq. ft. expansion – now covers 570,000 sq. ft. on an 80 acre campus. Dedicated work teams and highly advanced technologies and techniques using the Volvo Production System ensure continuous quality improvements, labor savings and cost control to reach the high quality that our customers have come to expect from Volvo.

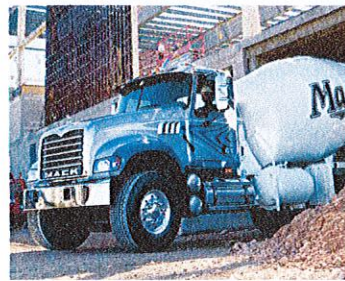




Volvo Trucks



Renault Trucks



Mack Trucks



UD Trucks



Volvo Buses



Volvo Construction Equipment



Volvo Penta



Volvo Financial Services

Versatile performance

The new Volvo SD75B and SD115B soil compactors are packed with advanced technology. The drum is configured with ease while the engine controls itself. The compactors adapt to your application and jobsite to provide maximum versatility and performance.

Frequency and amplitude choices

Easily adjust the vibration frequency from the operator console to compensate for changing soil types and conditions. Two frequency settings are standard and for even greater versatility, five frequency option is available. High and low amplitudes can also be selected.

Adaptive power

Adaptive power tailors machine performance by adjusting engine and hydraulic systems to individual job site requirements, providing the exact amount of power needed for increased efficiency. It's designed to run the machine at the optimal level needed for the job.



Application versatility

The machine can be set up in three different configurations and is available with smooth or padfoot drum. The compactor is quickly and easily converted from a smooth drum by clamping on a padfoot shell. The padfoot shell kit allows the machine to work in different applications and increases versatility.

Gradeability

The Volvo traction system provides excellent climbing and traction capabilities in difficult applications, such as steep inclines or slippery surfaces. The system prevents wheel or drum spin, improving gradeability, performance and productivity. For the most demanding applications, the High Traction variant is also available, delivering additional torque to easily climb extreme slopes.





DRUM PERFORMANCE

Volvo's advanced drum control system delivers multiple frequency, dual amplitude, and optimized centrifugal force – matching the drum's performance to your application. The choice of high or low amplitude is easily selected, giving you the flexibility to adjust the drum's dynamic force based on the job and material depth. The auto vibration feature also increases ease of operation and productivity.



VOLVO ENGINE

Volvo's premium Tier 4 Final engine delivers high torque at low rpm for superior performance and low fuel consumption. Designed to lower emissions and increase efficiency without compromising power.

Power up, fuel down

The perfectly optimised Volvo Tier 4 Final engine delivers high torque at low rpm for superior performance and low fuel consumption. The compactor's engine has been developed to offer greater fuel efficiency, increasing uptime and reducing costs.

Efficient cooling system

The hydraulically-driven fan with variable speed draws power only when needed. Lower fan speeds reduce noise, resulting in greater operator comfort and a lower total cost of ownership.



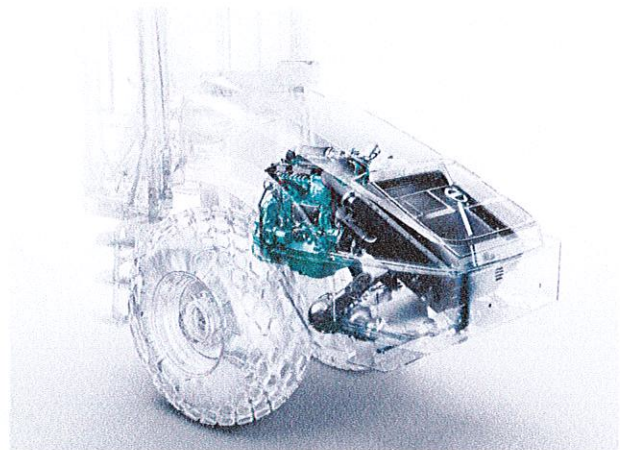
ECO mode

ECO mode is now standard and is always turned on by default. It adjusts the engine speed to match the operation mode and up to a 40% reduction in fuel consumption is achieved with ECO mode.

**Not applicable to SD75B*

Passive regeneration

The new passive regeneration provides continuous and simplified operation. Volvo's passive regeneration cleans the filters automatically during normal operation without any input from the operator or effect on performance.



Eccentric design

The eccentric design delivers more efficiency while using less power. Matching the required performance to suit your application, the eccentric is designed for faster ramp up speeds at lower pressure for increased fuel efficiency.

Packed with intelligence

COMPACT ASSIST

The Compact Assist option improves compaction efficiency by preventing unnecessary passes and identifying areas that might not have achieved ideal compaction.

ECO mode

ECO mode can be selected by the operator. This feature adjusts the engine speed to match the operation mode.

HIGH QUALITY COMPONENTS

The compactor features the highest quality components, clever routing and clean design.

Heavy-duty

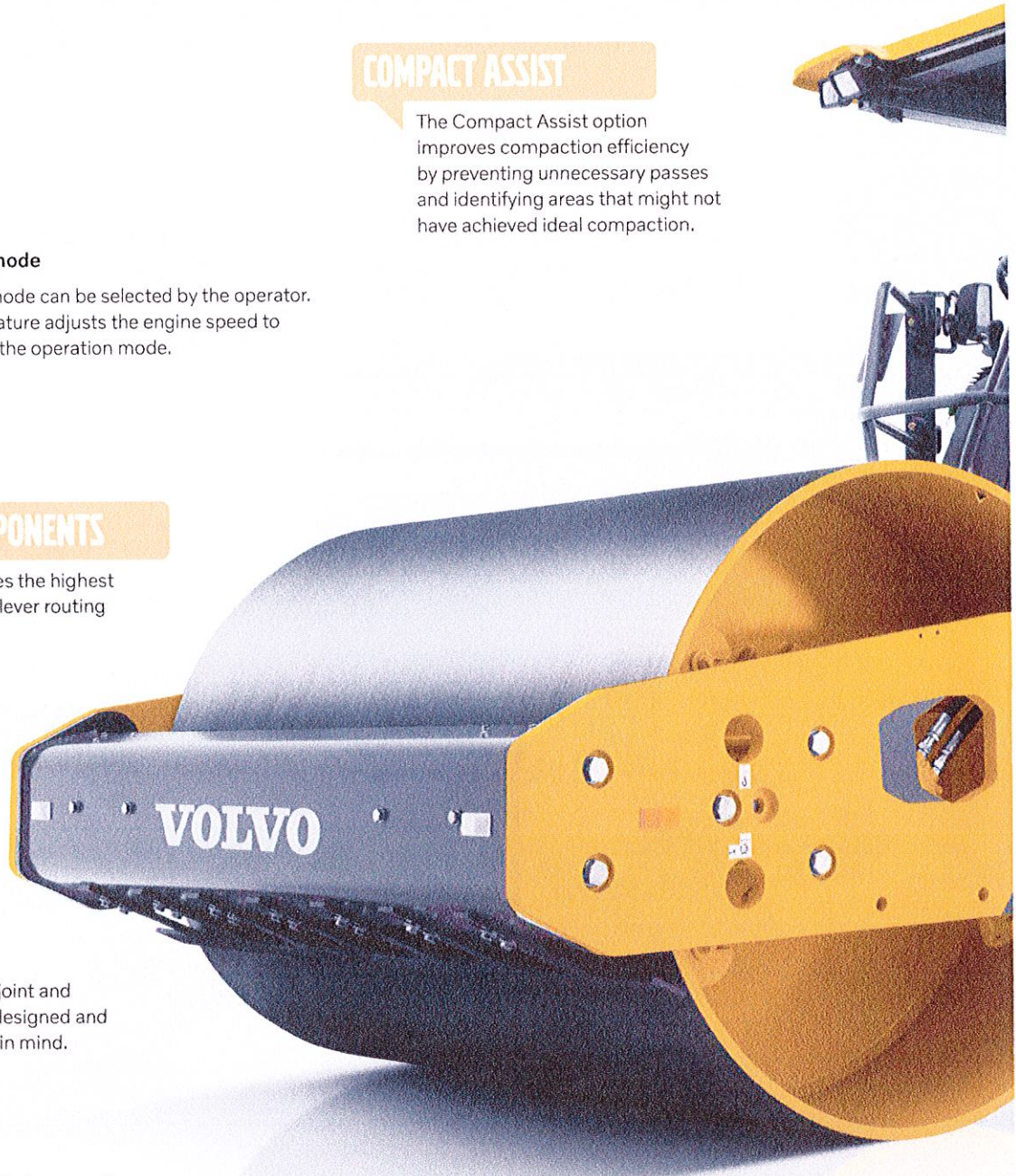
The heavy-duty drum, center joint and front frame components are designed and manufactured with durability in mind.

Operator Environment

The ROPS/FOPS certified cab or open operator's area provides a safe and comfortable working environment with allaround visibility.

DRUM PERFORMANCE

Volvo's advanced drum control system delivers multiple frequencies, dual amplitude, and optimized centrifugal force.





VOLVO ENGINE

The perfectly optimised Volvo Tier 4F engine delivers high torque at low rpm for superior performance and low fuel consumption.

Passive regeneration

Passive regeneration functions automatically during operation without input from the operator or effect on machine performance.

Service Access

The electric engine hood lifts up giving extensive ground level access to the engine compartment.

ActiveCare Direct

Maximize machine uptime and reduce repair costs with ActiveCare Direct, with 24-7/365 machine monitoring as well as customer reports.

Gradeability

The Volvo traction system provides excellent climbing and traction capabilities in difficult applications. For the most demanding applications, the High Traction variant is also available.

Impact meter

Integrated into the display, the impact meter ensures you travel at the right speed for target compaction.

Control in comfort

Step up to the Volvo designed cab and experience industry-leading low noise levels, ultimate comfort and a productive working environment. Safe, spacious and with improved all-around visibility, operators will work efficiently with less fatigue in a Volvo compactor.

Operator Environment

The ROPS/FOPS certified cab provides a safe and comfortable working environment with an efficient heating and air conditioning system and all-around visibility. With floor to ceiling cab glass, the operator has an excellent forward drum view as well as superior front and rear visibility.

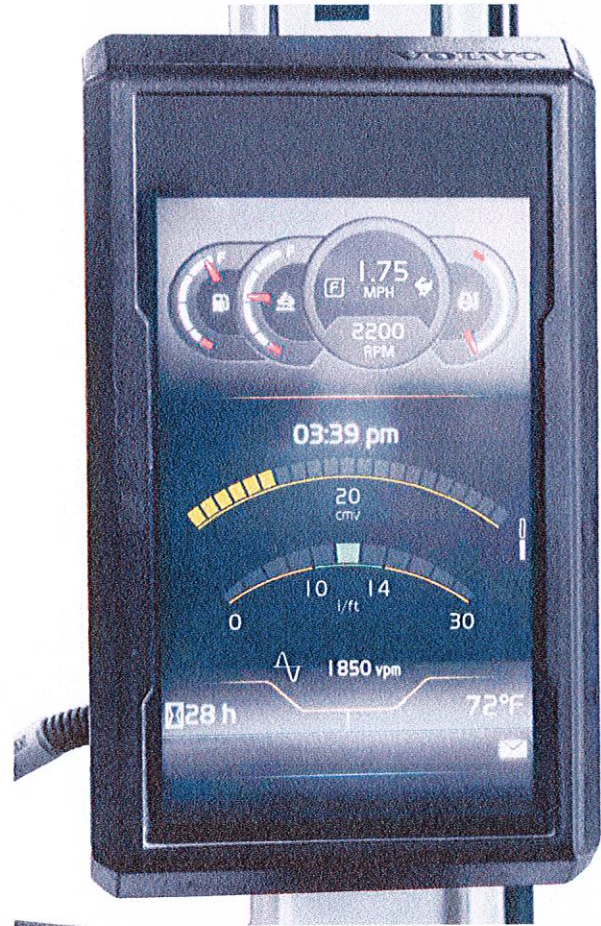


HVAC system

The cab is equipped with industry-leading climate control to ensure a comfortable environment inside the cab, whether heating or air conditioning is required. High air intake and positive cabin pressure helps to reduce dust from entering the cab.

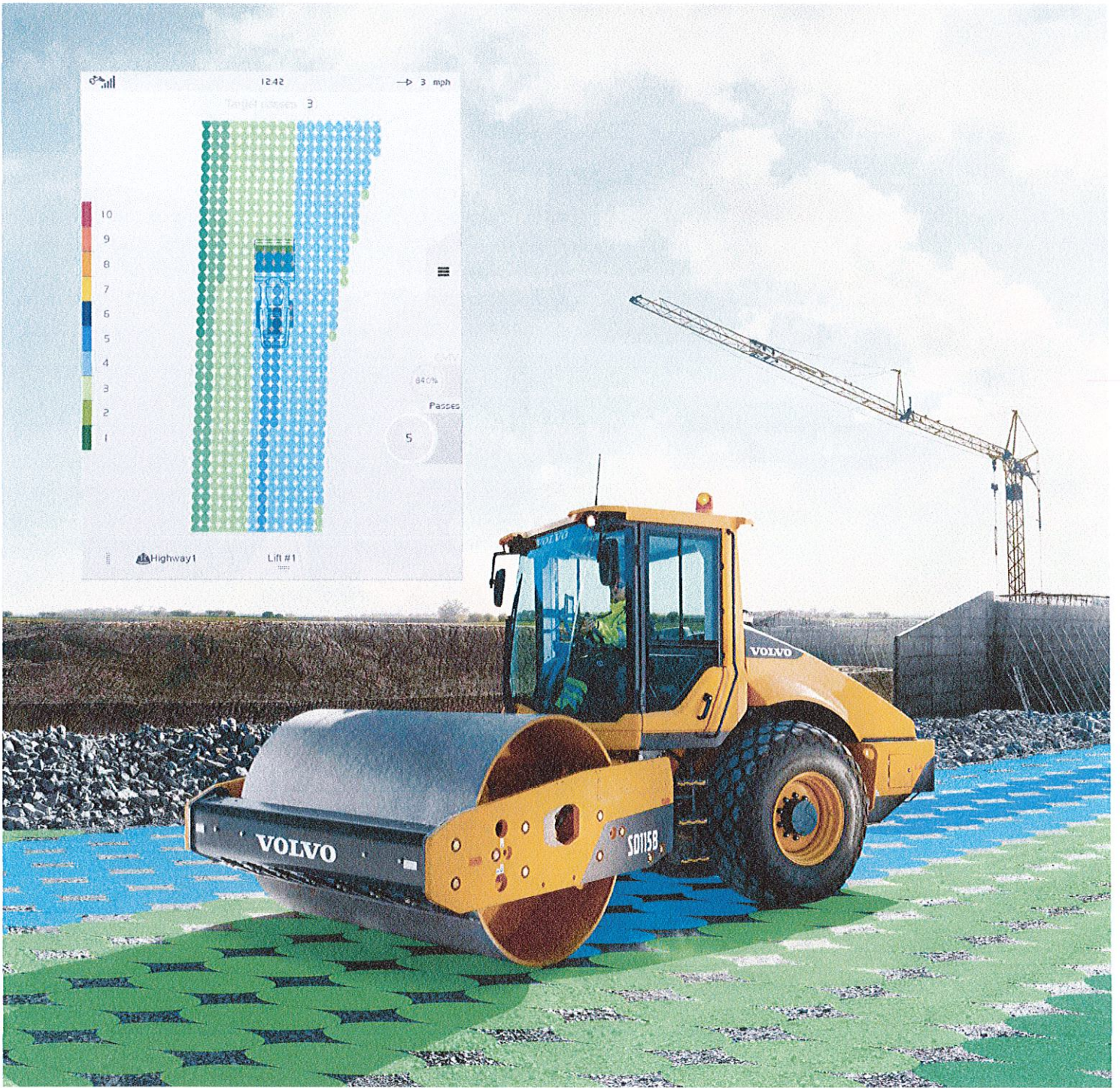
Operator display

The new high-tech color operator display presents operational information and key diagnostics, reducing the need for regular physical checks. Easy to see in direct sunlight, further functions include service interval information and machine operating conditions. The control keypad is conveniently located on the operator's side console and controls are grouped together for comfort and efficiency.



Impact meter and compaction gauge

Integrated into the display, the impact meter provides the operator with the impacts per meter, helping ensure they travel at the optimal speed for both target compaction and a uniform, smooth finish. The compaction gauge displays the CMV, an estimated value of soil stiffness, which helps to indicate when compaction has been achieved.



COMPACT ASSIST

Compact Assist for soil can display both pass mapping or CMV (compaction measurement value), an estimated value for soil stiffness. This option can improve compaction efficiency by preventing unnecessary passes and identifying areas that might not have achieved ideal compaction.



HIGH QUALITY COMPONENTS

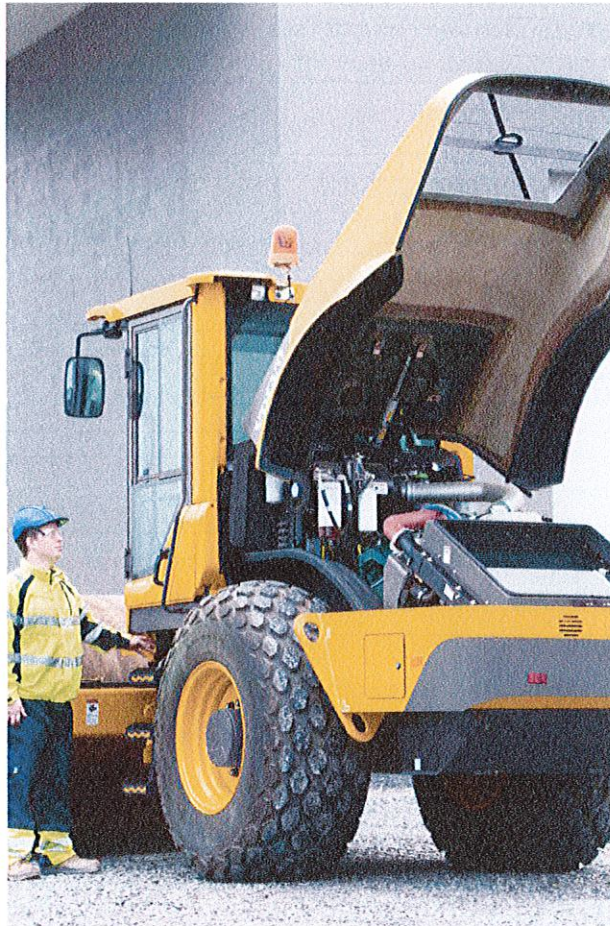
The compactor features the highest quality components, clever routing and clean design. The engine, hydraulics and electronic components work in harmony to deliver superior performance and increase machine life.

Robust and reliable

Volvo Construction Equipment produces the most robust and durable compactors on the market. The SD75B and SD115B machines provide easy service access for increased uptime and quick maintenance.

Service Access

The cab tilt is standard, providing access to all hydraulic components. For class-leading access, the electric engine hood lifts up giving extensive ground level access to the engine compartment. Maintenance and inspections can be conducted more efficiently with minimal downtime – increasing overall productivity and reliability.

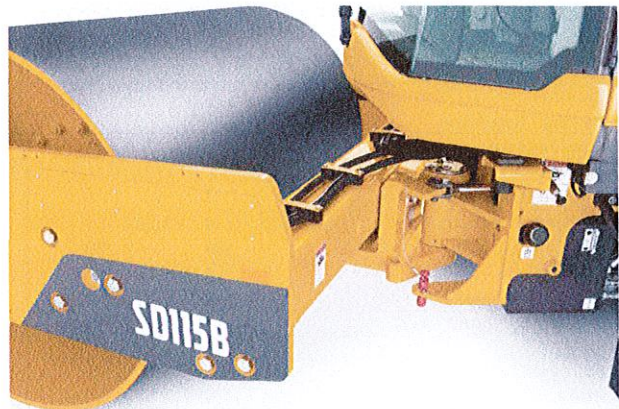


Sealed electronics

All components and electronics have been moved into the cab and mounted on the rear wall, protecting them from the elements. Fuses are accessible behind the fuse panel for improved accessibility.

ActiveCare Direct

Maximize machine uptime and reduce repair costs with ActiveCare Direct. ActiveCare Direct is a predictive and preventive maintenance service that provides 24-7/365 machine monitoring as well as customer reports.

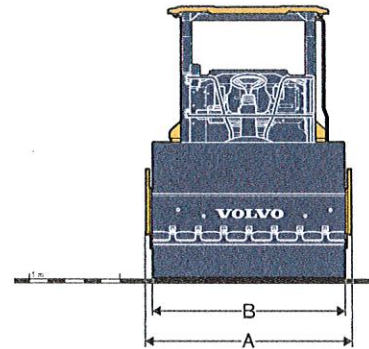
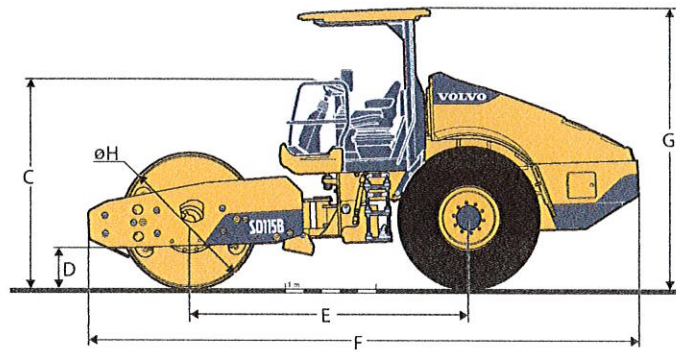


Heavy-duty

The heavy-duty drum, centre joint and front frame components are designed and manufactured with durability in mind. The thick steel drum shell is engineered for longevity and performance. Frames are robotically welded and built from high quality steel with precise and consistent welds guaranteeing a strong structure.

Specifications

Model			SD75B				SD115B				
Drum type			Smooth		Padfoot		Smooth		Padfoot		
Machine Weights (Inc. ROPS & inside scraper)											
Operating Weight (CECE)	kg	lb	7,192	15,850	7,368	16,245	11,643	25,615	11,800	25,960	
Static Weight @ Drum	kg	lb	3,610	8,025	3,786	8,350	6,243	13,735	6,400	14,080	
Static Weight @ Tyres	kg	lb	3,582	7,900	3,582	7,900	5,400	11,880	5,400	11,880	
Shipping Weight	kg	lb	7,081	15,610	7,257	1,600	11,513	25,329	11,670	25,674	
Drum											
Width	mm	in	1,676	66	1,676	66	2,134	84	2,134	84	
Diameter	mm	in	1,215	48	1,207	48	1,500	59	1,295	51	
Shell Thickness	mm	in	20	1	16	1	25	1	25	1	
Diameter Over Pad Feet	mm	in	-	-	1,354	54	-	-	1,549	61	
Pad Feet	number of		-	-	-	84	-	-	-	112	
Pad Height	mm	in	-	-	75	3	-	-	127	5	
Pad Tip Area	cm ²	in ²	-	-	125	19	-	-	135.3	21	
Vibration											
Frequency	Hz	vpm	30.8/33.8	1,850/2,025	30.8/33.8	1,850/2,025	30.8/33.8	1,850/2,025	30.8/33.8	1,850/2,025	
Optional 5 Frequency	High Amp	Hz	vpm	23.3-30.8	1,398-1,850	23.3-30.8	1,398-1,850	23.3-30.8	1,398-1,850	23.3-30.8	
Centrifugal Force	High Amp	kN	lb	139	31,250	139	31,250	258	58,050	258	
	Low Amp	kN	lb	121	27,200	121	27,200	242	54,400	242	
Nominal Amplitude	High Amp	mm	in	1.94	0.08	1.71	0.06	1.92	0.08	1.82	
	Low Amp	mm	in	1.41	0.06	1.25	0.05	1.5	0.06	1.42	
Propulsion											
Type	Hydrostatic										
Tyre	14.9-24 R3 6PR TT				14.9-24 R1 6PR TL			23.1-26 R3 8PR TT		23.1-26 R1 8PR TL	
Drum Drive	LSHT Motor					Planetary Gear Box					
Travel Speed											
High	km/h	mph	12.3	7.6	13	8.1	10	6.2	10	6.2	
Low	km/h	mph	6.5	4.0	7.5	4.7	4.5	2.8	4.3	2.7	
Engine											
Make / Model	Volvo D3.8 Tier 4 F					Volvo D4 Tier 4 F					
Engine Type	Turbocharged 4 cylinder					Turbocharged 4-cylinder					
Rated Power @ 2 200 rpm	kW	hp	55.4		74		110		147		
Electrical System											
Voltage (Negative ground)	Volt		12				24				
Alternator	Ah		100				80				
Batteries	CCA		1 x 1,000				2 x 1,000				
Brakes											
Service	Hydrostatic										
Parking / Secondary	Spring-applied, hydraulically released on drum & axle										
Miscellaneous											
Articulation Angle	°		+/- 38				+/- 35				
Oscillation Angle	°		+/- 12				+/- 12				
Inside turning radius	mm	in	3,249	128	3,249	128	3,800	149.6	3,800	149.6	
DEF Tank Capacity	l	gal	20		5		20		5		
Fuel Capacity	l	gal	115		30		165		43.5		
Hydraulic Oil Capacity	l	gal	60		16		75		20		
Guaranteed Sound Level											
Operator's Ear, acc. to ISO 11203:2009	LpA dB(A)		74 (Cab) - 87 (Canopy)				75 (Cab) - 87 (Canopy)				
External, acc. to Directive 2000/14/EC	LwA dB(A)		104				105				
GRADEABILITY											
Model			SD75B				SD115B				
Drum type			Smooth		Padfoot		Smooth		Padfoot		
No traction enhancement			Moderate								
With flow divider option			High								
With High Traction variant (includes flow divider and high torque axle options)			Extreme								
Moderate applications include highway construction, finish grades, and slopes up to 30%.											
High applications include trenching, infrastructure projects, and slopes ranging from 25% to 40%.											
Extreme applications include thick lifts of loose material, use of leveling blades, and slopes over 30% such as landfills.											



DIMENSIONS

Model	SD75B				SD115B			
	Smooth drum		Padfoot drum		Smooth drum		Padfoot drum	
	mm	in	mm	in	mm	in	mm	in
A	1,830	72	1,830	72	2,286	90	2,286	90
B	1,676	66	1,676	66	2,134	84	2,134	84
C	2,183	86	2,252	88.7	2,269	89.3	2,288	90.1
D	383	15.1	452	17.8	483	19	498	19.6
E	2,677	105.4	2,677	105.4	3,095	121.9	3,095	121.9
F	5,044	198.6	5,044	198.6	6,091	239.8	6,091	239.8
G	2,924	115.1	2,993	117.8	3,000	118.1	3,020	118.9
H	1,215	47.8	1,354	53.3	1,500	59.1	1,549	61

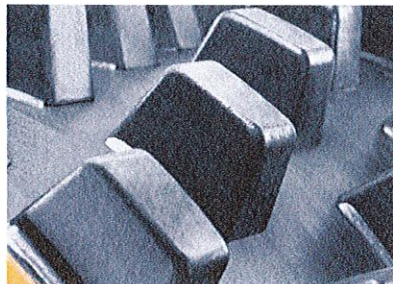
Equipments

SELECTION OF VOLVO OPTIONAL EQUIPMENT

Tires



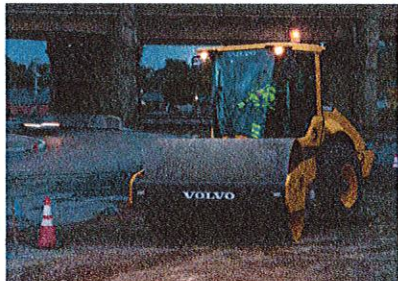
Padfoot drum



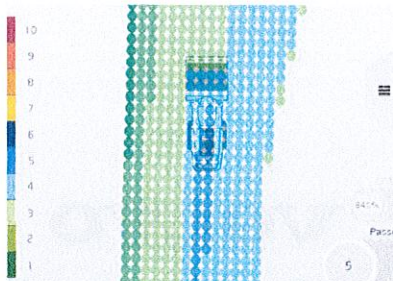
Blade



Work lights



Compact Assist



High Traction Variant



Not all products are available in all markets. Under our policy of continuous improvement, we reserve the right to change specifications and design without prior notice. The illustrations do not necessarily show the standard version of the machine.

VOLVO

Volvo Construction Equipment

volvoce.com