

**BID SUBMITTAL FORM**  
**Alabama County Joint Bidding Program**  
**BID ITEM – HEAVY DUTY DUMP CHASSIS OPTION C**

Company Name: KENWORTH OF BIRMINGHAM(TRUCKWORX)

Address: 2220 FINLEY BLVD; BIRMINGHAM, AL 35234

Bid Submitted by: JAY CALLAWAY  
 (Name of company representative)

Title: VP OF GOVERNMENT AFFAIRS E-mail address: JONATHANC@TRUCKWORX

Office: 601.420.4476; Cell: 601.702.1923  
 Phone: \_\_\_\_\_ Fax: 205.909.4173

By submitting this bid, we agree:	Initials
That the equipment model number identified below meets the bid specs for this bid item	<u>JC</u>
That the bid price will be honored for all counties for the period from Jan. 1, 2023 to Dec. 31, 2023; however, the deadline to submit orders for calendar year 2023 will be <u>March 15, 2023.</u>	<u>JC</u>
That the equipment will be delivered at the bid price to all counties participating in the joint bid program <u>Please review Addendum A; at the bottom of page 1.</u>	<u>JC</u>
That the company representative listed above will be the contact person for purchasing this bid item under the joint bid program	<u>JC</u>
That the bid is accompanied by a current catalog or model specification document for the model number identified below	<u>JC</u>
That the bid is accompanied by a copy of the manufacturer's standard warranty as required in the bid specifications	<u>JC</u>
That the bid includes the e-verify documentation required by Alabama law	<u>JC</u>
That, if awarded the bid, a performance bond will be provided upon request	<u>JC</u>
That an option sheet with individual pricing is attached	<u>JC</u>

Total Bid Price including options: \$ 213,500.00

Equipment Model #: T880(SETBACK AXLE) OR T880S (SET FOWARD AXLE)

Description: HEAVY DUTY DUMP CHASSIS C

Signature of company representative submitting bid: \_\_\_\_\_

Title: Vice President of Government Affairs

**Addendum A:**

**Due to OEM production constriants ACCA members will be limited to 71 build slots on this years contract. Order(s) will be recieved on a first come, first serve basis until all production slots are fulfilled. There may be additional allocation available so please call for those opportunities.**

## OPTION COST SHEET FOR HEAVY DUTY DUMP TRUCK CHASSIS OPTION C

<u>Options</u>	<u>Option Price</u>
Allison World 4500-RDS-6 six speed Automatic Transmission w/ 4.56 Rear Axle Ratio in place of 10 speed manual w/ 4.10 Rear Axle Ratio	\$ <u>10,892.00</u>
Eaton Fuller Ultrashift Plus 8LL transmission. Requires 1650 torque engine and optimized Rear axle ratio (4.10 or 4.30 depending on engine selection) (results in price reduction)	\$ <u>7,688.00</u>
Dual Exhaust in place of standard single exhaust	\$ <u>367.00</u>
Outside Aluminum wheels (6) on lift axle and rear axles in place of steel wheels	\$ <u>591.00</u>
425/65R22.5 Front Tires in place of 385/65R22.5 radials Bridgestone, Goodyear, or Yokohama	\$ <u>291.00</u>
Factory installed 23k lb. capacity non-steerable lift axle with Bendix LQ-5 Valve and dash mounted controls (flip valve, pressure regulator, & air pressure gauge) and (4) 295/75R22.5 virgin rubber 14 ply highway tread radial tires by Bridgestone, Goodyear, or Yokohama with (4) 22.5 x 8.25 steel disc wheels. 1yr/100k mile Factory warranty included.	\$ <u>5109.00</u>
Full truck kit/pintle hook prep package: includes tractor protection valve and gladhands ran To end of frame for safe trailer operation	\$ <u>425.00</u>
MX 13 L engine with set forward axle, 4.78 rear axle ratio, & straight bright finish bumper in place of X15 15L engine (results in price reduction)	\$ <u>4500.00</u>
7" Wide polished stainless steel tank straps with polished aluminum fuel tank	\$ <u>270.00</u>

**NOTE:** Award will be made on the basis of the total cost of the truck with all options included. However, a county may, at its discretion, deduct one or more of the above-referenced options from the truck, and in such event, the cost of the option as stated on the bid shall be deducted from the total cost of the truck. There shall be no other deductions and no additions made to the truck by the purchasing county or by the vendor.

Equipment Model #: T880S (SET FOWARD AXLE), OR T880( SET BACK AXLE)

Description: HEAVY-DUTY DUMP CHASSIS

Signature of company representative submitting bid: \_\_\_\_\_

Title: VP OF GOVERNMENT AFFAIRS



**BID SPECIFICATIONS  
FOR  
HEAVY DUTY DUMP TRUCK CHASSIS - OPTION C**

**GENERAL**

These specifications shall be construed as the minimum acceptable standards for a heavy duty dump truck chassis. Should the manufacturer's current published data or specifications exceed these standards, the manufacturer's standards shall be considered minimum and shall be furnished. All integral parts not specifically mentioned in the scope of these specifications that are necessary to provide a complete working unit shall be furnished. Additionally, the machine offered for bid shall include all standard manufacturers' equipment.

The use of specific names or numbers in the specifications is not intended to restrict the bidder or any seller or manufacturer, but is intended solely for the purpose of indicating the type, size, and quality of equipment considered best adapted to the uses of counties participating in this joint bid.

Note all units offered for bid must be of manufacturer's current production model and must be fully compliant with EPA standard US10 without the use of EPA engine credits. Chassis should be equipped with the appropriate diesel particulate filter and SCR after treatment system.

**BID SUBMITTAL FORM**

Each bidder must submit his or her bid on the Bid Submittal Form included in the invitation to bid package. All written warranties to be submitted shall be attached to the Bid Submittal Form.

**BID PRICE**

The price bid shall include all destination charges, delivery charges, title fees, rebates and all other applicable costs and refunds.

**REPLACEMENT PARTS AVAILABILITY**

Parts must be available for 5 years or 500,000 miles of use for the piece of equipment bid.

**WARRANTY**

Bidders shall submit a copy of the manufacturer's standard warranty along with a complete explanation of the warranty with their bid. Warranty must be transferable. Warranty must include the following minimum coverage:

Basic Vehicle: 1 Year or 100,000 miles

Diesel Engine: 2 year or 250,000 miles. However, counties will have the option to purchase additional coverage (an extended warranty) if negotiated between the purchasing county and successful bidder within the first 9 months of truck purchase.

Transmission: 3 Year or 300,000 miles

Yes  No

Rear Carriers: 3 Year or 300,000 miles

Page# 12 /Attachment

**ASSEMBLY AND DELIVERY**

The truck chassis will be purchased for use with a 16' dump body and optional body equipment that is to be bid separate and apart from the truck chassis. The dump body company will be responsible for assembly and installation of the dump body and related optional equipment, including the cost of the same. The selling truck chassis dealer will be responsible for delivery of the chassis to the dump Body Company for installation and for delivery of the complete dump truck unit to the county following installation and assembly of the dump body and related options onto the truck chassis. Freight to and from the Dump Body Company will be included in the truck bidder's proposal. Dump body installation and assembly costs will be included in the dump body bidder's proposal.

**DOT INSPECTION AND SAFETY EQUIPMENT**

Prior to delivery each unit shall be DOT inspected and include the appropriate documentation and decal. In addition each unit shall be equipped with the required fire extinguisher and reflective triangle kit.

**ENGINE AND RELATED COMPONENTS**

Shall be an in line 6 design 15 liter minimum, turbo charged diesel engine capable of developing 500HP minimum with a maximum governed RPM of 1800 or more and a minimum peak torque rating of 1,850FT Lbs. Yes X No \_\_\_  
Page # 2

Engine shall have full wet replaceable cylinder liners. Fuel injection system to be equipped with a unit pump or unit injector style with CARB idle reduction. Yes X No \_\_\_  
Page # 2

Air intake system shall have a single dry element with a restriction indicator. Yes X No \_\_\_  
Page # 3

Engine cooling system to have a minimum 1,330 square inches of frontal area, aluminum core radiator with silicone hoses throughout and coolant protection to -34 degrees F. Yes X No \_\_\_  
Page # 4

Fan drive to be Horton two speed type Yes X No \_\_\_  
Page # 4

Single vertical Exhaust. Cab Mounted for clear back of cab with stainless steel heat shield, steel elbow and chromed turn out stack. Yes X No \_\_\_  
Page # 4

Diesel Particulate Filter and SCR catalyst to be mounted under passenger door. Yes X No \_\_\_  
Page # 4

Factory installed integral Engine Brake. Yes X No \_\_\_  
Page # 2

Engine electronics to include shutdown capabilities for critical engine functions: Yes X No \_\_\_  
Page # 4



**STARTING AND ELECTRICAL SYSTEM**

12-Volt system fuse/circuit breaker protected

Yes  No   
Page # 4

12V gear reduction starter, 12V 160 amp alternator

Yes  No   
Page # 4

(3) 12V maintenance free group 31 batteries with 700 cold cranking amps each. Batteries to be mounted in a single metal box with fiberglass cover RH side behind cab.

Yes  No   
Page # 4

**TRANSMISSION AND DRIVELINE**

A manual ten (10) speed overdrive design, with a minimum first gear reduction of 14.56 to 1.

Yes  No   
Page # 5

Transmission should have oil cooler with dash mounted temperature gauge, left and right-side PTO access gears with appropriate clearance.

Yes  No   
Page # 5

Eaton Advantage easy pedal manually adjusting 15.5" two plate ceramic clutch 7 springs, 6 paddle design with AIR assist feature and remote lube fittings for clutch release bearing and both crosses mounted on LH frame rail under hood.

Yes  No   
Page # 5

Main drivelines Spicer 1810HD with coated splines/ inter axle 1810 with coated splines or Equivalent.

Yes  No   
Page # 5

**CAB EXTERIOR**

Cab to be Class 8 design for construction and vocational applications. **Aluminum** and composite construction for corrosion resistance. Huck bolted or Henrob fastened construction. Minimum width 1.9 meters. Minimum bumper to back of cab = 122.5".

Yes  No   
Page # 9

Drop style side windows for improved driver's downward visibility.

Yes  No   
Page # 11

Rear of engine may not extend into cab. No doghouse in firewall is allowed.

Yes  No   
Page # 11

Cab mounting should be air suspended at rear on at least 1 air bags.

Yes  No   
Page # 11

Cab should feature:

Dual air horns in addition to the standard electric signal horn

Yes  No   
Page # 11

LED marker lights

Yes  No   
Page # 11

Cab mounted heated mirrors with convex mirrors mounted directly below heated mirrors.

Yes  No   
Page # 11

Stainless steel exterior sun visor

Yes  No   
Page # 11

Hood is to be a full tilting composite design to include woven aluminum mesh grill

Yes  No   
Page # 11

Rubber fender extensions for wider base front tires.

Yes  No   
Page # 11

Cab and hood paint color to be selected from manufacturer's standard non-metallic paint chart

Yes  No   
Page # 12

### **CAB INTERIOR**

Cab interior to include the following:

Storage tray on back wall of cab and in overhead console

Yes  No   
Page # 9

Cab interior is to be mid-grade level fully groomed with headliner, back wall and windshield pillar post and door panels covered

Yes  No   
Page # 9

Cab should have interior sun visors on both sides of cab.

Yes  No   
Page # 9

Dash features to include:

Black appearance with chrome gauge surrounds

Yes  No   
Page # 10

Center mount console with cup holders

Yes  No   
Page # 10

Full adjusting tilt and telescopic steering column

Yes  No   
Page # 9



Multifunction Driver Display to include the following:

- Average and real time fuel economy
- RPM display
- Ignition timer
- Trip information
- Truck information
- Onboard diagnostics
- Air Filter Restriction gauge, Engine oil temperature gauge,  
dual rear axle temperature gauges (2), Fuel filter restriction gauge,  
and Manifold pressure gauge.
- Gauges to be individual replaceable gauges (no automotive type clusters)

Yes  No   
Page # 9

Cab seats should be: Driver High Back air ride design with dual arm rests

Yes  No   
Page # 9

Passenger seat to be fixed design with dual arm rests storage area  
underneath seat with lid.

Yes  No   
Page # 10

Both seats to have fabric covering with required lap and shoulder belts.

Yes  No   
Page # 9

Factory installed integral heater/air conditioning (HVAC) with R134A refrigerant  
and rotary type air conditioner compressor. HVAC unit to be firewall mounted  
to allow for easier access to components.

Yes  No   
Page # 9

AM/FM and Bluetooth radio with clock, USB port, and weather band, two-way radio  
Power leads with mounting plate installed in overhead console with dual mirror mounted  
antennas.

Yes  No   
Page # 10

One additional dash mounted power outlet to be furnished.

Yes  No   
Page # 10

Windshield wipers to be two (2) speed electric with washer and intermittent  
feature. Wiper motor and linkage to be mounted external of the cab on firewall  
for easier access.

Yes  No   
Page # 10

### **AIR BRAKES**

Brake system to be full dual antilock air design with heated extended purge  
air dryer.

Yes  No   
Page # 4

Naturally aspirated air compressor should have 18.7 CFM capacity and increased air reservoir capacity for the local installation of a pusher style third axle.

Yes  No   
Page # 4

System to include either a steering column or dash mounted valve for rear service brakes.

Yes  No   
Page # 9

**FRAME/BUMPER/FUEL TANKS**

Steel 120,000 PSI steel frame rails 10.75" x 3.50" x 0.375" with a section modulus of 27.33 and a RBM per rail of 3,280,000 including full steel insert.

Yes  No   
Page # 7

**Minimum 209"** wheelbase with a **135"** cab to axle and a **195"** load platform.

Yes  No   
Page # 1

Front bumper Bright Finish steel swept back channel design with center mount cast tow pin.

Yes  No   
Page # 7

Fuel tank(s) to be aluminum with a minimum of 110-gallon capacity.

Yes  No   
Page # 8

**FRONT AXLE**

20,000 LB Meritor MFS20 or Equivalent suspension and shock absorbers. Threaded spring hanger pins and bushings replacing rubber bushings.

Yes  No   
Page # 5

20,000# integral power steering with dual steering boxes and oil cooler

Yes  No   
Page # 5

Unitized sealed (maintenance free) front wheel hubs.

Yes  No   
Page # 5

Sealed tapered kingpins and bearings.

Yes  No   
Page # 5

Meritor "S" cam design or Equivalent 16.5" x 6" brakes

Yes  No   
Page # 5

Front wheels to be Aluminum disc ten (10) hole bud style, hub piloted 22.5" x 12.25".

Yes  No   
Page # 7

Front tires to be 18 ply 385/65R22.5 radials Bridgestone, Goodyear, or Yokohama.

Yes  No   
Page # 7



**REAR AXLE**

Dual Meritor RT46-164PEH 46,000# capacity tandem rear axle or Equivalent with heavy wall housing and integral lube pump (4.10 ratio). 46,000# Chalmers 854-46-H suspension with standard restrictor can. No multi leaf springs and walking beam design allowed.

Yes  No   
Page # 6

In cab Power divider lock out valve with warning light and buzzer.

Yes  No   
Page # 6

Driver controlled inter wheel differential locks for both rear axles with manual valve and warning light.

Yes  No   
Page # 6

Meritor "S" cam design or Equivalent 16.5" x 7" brakes

Yes  No   
Page # 6

Automatic brake slack adjusters

Yes  No   
Page # 6

Brake chambers shall be (4) 30/30 style chambers with raised chambers on rear axle.

Yes  No   
Page # 6

Steel disc ten- (10) hole bud style, hub piloted 24.5 x 8.25 rear wheels.

Yes  No   
Page # 7

Rear tires to be 14 ply 11R 24.5 traction radials Bridgestone, Goodyear, or Yokohama.

Yes  No   
Page # 7

Tire clause; Due to Global tire shortages, different tire brands & sizes may have to be substituted to complete truck build.

**OPTIONS**

In addition to the above options related to the tri-axle or heavy-duty dump truck chassis, the bid must also include the cost for each of the following options, itemized separately on the bid:

Allison World 4500-RDS-6 six speed Automatic Transmission w/ 4.56 Rear Axle Ratio in place of 10 speed manual w/ 4.10 Rear Axle Ratio

Yes  No   
Page # 4

Eaton Fuller Ultrashift Plus 8LL transmission. Requires 1650 torque engine and optimized Rear axle ratio (4.10 or 4.30 depending on engine selection) (results in price reduction)

Yes  No   
Page # 4

Dual Exhaust in place of standard single exhaust

Yes  No   
Page # 4

Outside Aluminum wheels (6) on lift axle and rear axles in place of steel wheels  
Yes  No   
Page # 6

425/65R22.5 Front Tires in place of 385/65R22.5 radials Bridgestone, Goodyear, or  
Yokohama Reference \*Tire Clause\* on page 9.  
Yes  No   
Page # 7

Factory installed 23k lb. capacity non-steerable lift axle with Bendix LQ-5 Valve and  
dash mounted controls (flip valve, pressure regulator, & air pressure gauge) and  
(4) 295/75R22.5 virgin rubber 14 ply highway tread radial tires by Bridgestone, Goodyear,  
Or Yokohama with (4) 22.5 x 8.25 steel disc wheels. 1yr/100k mile Factory warranty  
included. Reference \*Tire Clause\* on page 9.  
Yes  No   
Page # 6

Full truck kit/pintle hook prep package: includes tractor protection valve and gladhands ran  
To end of frame for safe trailer operation  
Yes  No   
Page # 11

MX 13 L engine with set forward axle, 4.78 rear axle ratio, & straight bright finish bumper  
in place of X15 15L engine (results in price reduction)  
Yes  No   
Page # 2

7" Wide polished stainless steel tank straps with polished aluminum fuel tank  
Yes  No   
Page # 8

;however, the deadline to submit orders for calendar year 2023 will be  
March 15, 2023.

**NOTE:** Award will be made on the basis of the total cost of the truck chassis with all options included.  
However, a county may, at its discretion, deduct the above-referenced option from the truck chassis, and in  
such event, the cost of the option as stated on the bid shall be deducted from the total cost of the truck  
chassis. There shall be no other deductions and no additions made to the truck chassis by the purchasing  
county or by the vendor.





# TRUCKWORX

Jay Callaway  
 Truckworx – Jackson  
 2220 Finley BLVD  
 Birmingham, AL 35254  
 Office: 601.939.5300  
 Cell: 601.702.1923  
 Email: jonathanc@truckworx.com  
 www.TRUCKWORX.com

Attn: ACCA County Commissioners

January 1, 2023

Dear ACCA Administration:


Truckworx is proposing lowest cost ownership by offering the most aggressive residual value to the county members affiliated with the association. Please be advised that production will be limited to 71 slots for next year's ACCA contract. First come, first serve basis will be the methodology Truckworx will utilize to fulfill orders next year. Please continue to call for more opportunities.

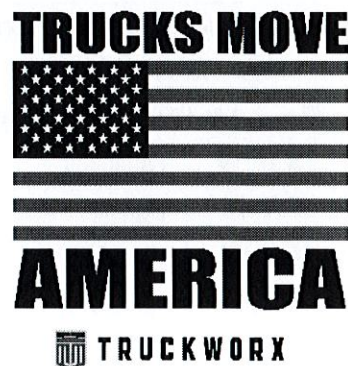
<b>2024 Triaxle Dump Truck with all options</b>	
<b>Engine Cummins</b>	500HP 15- liter engine 1850 Torque
<b>Transmission Allison w/PTO</b>	4500 RDS
<b>Front Axle Meritor</b>	20k
<b>Rear Axle Dana Spicer</b>	46k
<b>Cab to Axle for Dump Truck</b>	141
<b>Color</b>	White
<b>Tires</b>	11R24.5
<b>Wheels</b>	Polished Aluminum
<b>Ratio</b>	4.56
<b>Fan hub on/off or Two speed fan hub</b>	Fan hub Horton 2 speed
<b>Cooling Module</b>	1330 square inches
<b>Alternator</b>	160 amp
<b>ACCA Contract Price \$213,500.00</b>	
<b>51 Slots available in 2023</b>	
<b>See Addendum A on Page 1</b>	



Thank you for your consideration regarding a Kenworth Truck. Please feel free to contact me if you have any questions. I look forward to providing you with "The World's Best!"

CC File: ACCA Administration

  
 Jay Callaway,  
 Vice President of Government Affairs









TRUCKWORX KENWORTH - BIRMINGHAM (K415)  
 2220 FINLEY BOULEVARD  
 BIRMINGHAM, Alabama 35234

MAS MML ALM ACCA  
 100 N JACKSON ST  
 MONTGOMERY, Alabama 36104  
 United States of America

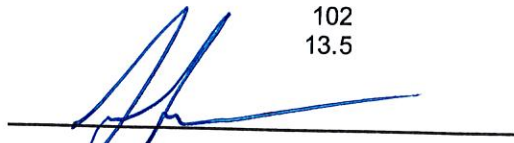
Jonathan Callaway  
 Cell Phone: 601-702-1923  
 Office Phone: 601-939-5300  
 Email: jonathanc@truckworx.com

BUYER

## Vehicle Summary

<b>Model:</b>	<b>Unit</b>	<b>Chassis</b>	
Type:	T880 Series Conventional	Fr Axle Load (lbs):	20000
Description 1:	FULL TRUCK	Rr Axle Load (lbs):	46000
Description 2:	MAS MML ALM ACCA	G.C.W. (lbs):	88501
	Clone of Chassis 266425 T880 Series Conventional		
<b>Intended Serv.:</b>	<b>Application</b>	<b>Road Conditions:</b>	
	Local pickup & delivery: Vehicles which	Class A (Highway)	96
<b>Commodity:</b>	Gravel/crushed rock/sand.	Class B (Hwy/Mtn)	3
		Class C (Off-Hwy)	1
<b>Type:</b>	<b>Body</b>	Class D (Off-Road)	0
Length (ft):	End dump.	Maximum Grade:	6
Height (ft):	16	Wheelbase (in):	215
Max Laden Weight (lbs):	14	Overhang (in):	80
	88500	Fr Axle to BOC (in):	74
		Cab to Axle (in):	141
<b>No. of Trailer Axles:</b>	<b>Trailer</b>	Cab to EOF (in):	221
Type:	0	Overall Comb. Length (in):	343.5
Length (ft):	0		
Height (ft):	0	<b>Special Req.</b>	
Kingpin Inset (in):	0	U.S. Domestic registry, 50-state.	
Corner Radius (in):	0		
<b>Length (ft):</b>	<b>Restrictions</b>		
<b>Width (in):</b>	120		
<b>Height (ft):</b>	102		
	13.5		

Approved by:



Date:

10/4/22

Note: All sales are F.O.B. designated plant of manufacture.

Price Level: January 1, 2022

100% Complete

Date: October 03, 2022

Deal: MAS MML ALM ACCA

Quote Number: QUO-910740-X0Z1V0

Printed On: 10/3/2022 10:02:38 AM





Sales Code	Std/Opt	Description	\$ List	Weight
<b>Model</b>				
0000810	S	<b>T880 Series Conventional</b>	213,378	15,549
0070060	S	<b>T880</b>	0	0
0072000	O	<b>Chassis operation will not incl. stationary</b> application. Stationary operation is defined as running the engine under load while stationary at a substantial fraction of engine gross horsepower (60% or greater) for an extended period of time (longer than 5 - 10 minutes).	0	0
0080075	O	<b>Dealer/Customer declines engine w/CARB Idle Emissions Reduction Feature.</b> ✓	0	0
0090000	S	<b>Non-Sleeper w/rear axle capacity less than 59K.</b>	0	0
0098401	O	<b>State of Registry: Alabama</b>	0	0
<b>Engine &amp; Equipment</b>				
0130307	O	<b>X15 500V 500@2000 1850@950</b> 2021 with Intebrake, ✓ Productivity Series N09420 C333 0.....Reserve Speed Limit Offset ( N09380 C334 0.....Maximum Cycle Distance (C334 N09360 C400 252...Reserve Speed Function Reset N09200 C399 120...Standard Maximum Speed Limit N09400 C401 10....Maximum Active Distance (C40 N09220 C402 0.....Expiration Distance (C402) N09540 C395 0.....Expiration Distance (C395) N09260 C121 68....Maximum Accelerator Pedal Ve N09440 C234 YES...Engine Protection Shutdown ( N09460 C231 NO....Gear Down Protection (C231) N09580 C133 5.....Timer Setting (C133) N09680 C233 NO....Idle Shutdown Manual Overrul N09480 C132 1200..Max PTO Speed (C132) N09300 C128 68....Maximum Cruise Speed (C128) N09500 C239 NO....Cruise Control Auto Resume ( N09520 C238 NO....Auto Engine Brake in Cruise N09240 C209 120...Hard Maximum Speed Limit (C2 N09780 C190 80....High Ambient Temperature Thr N09740 C188 40....Low Ambient Temperature Thre N09760 C189 60....Intermediate Ambient Tempera N09720 C382 YES...Enable Hot Ambient Automatic N09600 C396 YES...Enable Impending Shutdown Wa ✓ N09620 C397 60....Timer For Impending Shutdown N09640 C206 35....Engine Load Threshold (C206) N09560 C225 YES...Enable Idle Shutdown Park Br	7,709	465
1000046	O	<b>EPA Emissions Warranty Engine</b>	0	0
1000151	S	<b>PremierSpec</b>	0	0

Price Level: January 1, 2022  
 Deal: MAS MML ALM ACCA  
 Printed On: 10/3/2022 10:02:38 AM

100% Complete

Date: October 03, 2022  
 Quote Number: QUO-910740-X0Z1V0



Sales Code	Std/Opt	Description	\$ List	Weight
1000243	O	<b>Gearing Analysis: Performance</b> power before economy results.	0	0
1000254	O	<b>Customer's Typical Operating Spd: 65 mph.</b>	0	0
1000684	O	<b>Effective VSL Setting NA</b>	0	0
1000858	O	<b>Engine Idle Shutdown Timer Disabled</b>	0	0
1000891	O	<b>Eff EIST NA Expiration Miles</b> Use only with MX and Cummins engines	0	0
1002080	O	<b>Air compressor: Cummins 18.7 CFM, Naturally</b> Aspirated for Cummins X15 engines	196	0
1051200	S	<b>Air Cleaner: composite firewall mounted PACCAR or</b> Cummins engines	0	0
1099080	O	<b>Pre-cleaner mounted in the hood plenum</b>	311	0
1105220	O	<b>Fan Hub: Horton 2-Speed for X15</b>	5	0
1123555	S	<b>Cooling module: 1330 square inches.</b> Includes aluminum radiator core, aluminum charge air cooler, translucent surge tank and washer bottle, silicone hoses, and extended life coolant.	0	0
1247231	O	<b>EXH: 2021 RH Under DPF/SCR with Dual SOC</b> tailpipes. Daycab, Extended Daycab, Modular Sleeper	1,696	0
1290436	O	<b>Tailpipe: 7 in. dual 36 in. 45 degree curved.</b>	665	8
1321110	O	<b>Fuel Filter:PACCAR Extended Service Interval</b> Fuel/Water Separator, 2017 and Later Emissions	99	0
1321205	S	<b>Run Aid:Fuel Heat</b> *For Fuel Filter	0	0
1321305	S	<b>Start Aid:12V Heat</b> *For Fuel Filter	0	0
1816260	O	<b>Alternator: PACCAR 160 amp, brush type</b>	-53	0
1821210	S	<b>Batteries: 3 PACCAR GP31 threaded post (700-730)</b> 2100-2190 CCA dual purpose.	0	0
1836106	O	<b>Mitsubishi 105P55 12V Starter with Cummins and PX</b> PACCAR 12 volt electrical system. W/ centralized power distribution incorporating plug-in style relays. Circuit protection for serviceability, 12- volt light system w/circuit protection circuits number & color coded. Only for Cummins or PX engines.	0	0
1840065	S	<b>12V low voltage disconnect for starter battery</b> protection.	0	0
1901017	S	<b>Remote PTO/Throttle, 12-Pin, Engine Bay</b> Remote Control Provision	0	0
<b>Transmission &amp; Clutch</b>				
2016158	O	<b>Transmission: Allison 4500RDS 6-speed</b>	25,056	478

Price Level: January 1, 2022

100% Complete

Date: October 03, 2022

Deal: MAS MML ALM ACCA

Quote Number: QUO-910740-X0Z1V0

Printed On: 10/3/2022 10:02:38 AM





# KENWORTH

Sales Code	Std/ Opt	Description	\$ List	Weight
		w/o retarder, w/PTO provision. 5th generation. For vocational applications. Includes shift control, transmission oil temperature gauge, oil level sensor & heat exchanger. Transynd transmission fluid is standard on all Allison 1000, 2000, 3000 & 4000 series transmissions.		
2406453	O	<b>Driveline: 2 Dana SPL250XL 1 centerbearing</b> Low maintenance offering from Spicer. On-highway 350K mi first service interval, 100K mi subsequent service interval on U-joint, splines lubed for life, quick disconnect end caps.	981	83
2410018	O	<b>Torque converter included w/Allison Transmission.</b>	0	0
2410151	O	<b>Pushbutton control center console mounted.</b> Class 8 with Allison Transmission.	0	0
2410204	O	<b>Allison Fuel Sense: Delete</b>	0	0
2410244	O	<b>J1939 Park Brake Auto Neutral</b>	0	0
2410310	O	<b>Allison Neutral at Stop</b>	513	0
2429358	O	<b>Rear transmission support springs for transmission PTO applications are required to ensure that engine flywheel housings are not overloaded when transmission PTO's are installed.</b>	92	0
2429378	O	<b>Customer installed transmission PTO in the LH Mounted position (8 o'clock) for Allison 3000 &amp; 4000 transmissions.</b>	0	0
<b>Front Axle &amp; Equipment</b>				
2506181	O	<b>Dana Spicer D2000 Front Axle rated 20K standard track.</b>	371	-27
2621078	O	<b>Front Brakes: 22K Bendix ES S-cam 16.5x6 in.</b>	-494	-46
2690035	O	<b>Front Brake Drum: 22,000 lbs. 16-1/2x6 in. Cast.</b>	-222	104
2702020	O	<b>Front Hubs Iron hub pilot 20,000 lbs. 10 Bolt 16.5x6in. or 7in. or air disc brakes. 10 Bolt, 11-1/4 in. bolt circle. Consider Wheelguards (5850002) with aluminum wheels.</b>	-190	80
2741970	S	<b>ConMet PreSet Plus Hub package; front axle.</b>	0	0
2750001	S	<b>Hubcap: front vented.</b>	0	0
2765001	O	<b>Front Auto Slack Adjuster.</b>	0	0
2866020	S	<b>Front Springs: Taperleaf 20K w/ shock absorbers w/ maintenance-free elastomer spring pin bushings. Standard with rubber pins except for C500 which has threaded pins. Not available on W900L. W900B use 2866021.</b>	0	0
2895302	S	<b>Dual power steering gear: 16-22K Sheppard HD94.</b> Heavy duty. Not for use on T3.	0	0
2899336	S	<b>Power Steering Cooler:Radiator Mounted Air-to-Oil</b>	0	0
2900020	O	<b>Front Frame Raised: 1/2 in.</b>	22	0

Price Level: January 1, 2022

100% Complete

Date: October 03, 2022

Deal: MAS MML ALM ACCA

Quote Number: QUO-910740-X0Z1V0

Printed On: 10/3/2022 10:02:38 AM





Sales Code	Std/ Opt	Description	\$ List	Weight
2900616	O	<b>Threaded Bushings for taperleaf spring</b> 16K, 18/20K, 22K, 40K replacing rubber.	95	0
<b>Rear Axle &amp; Equipment</b>				
3144183	O	<b>Dual Dana Spicer D46-172HP rear axle rated at</b> 46K. w/ 16mm housing and 2.06in. shaft diameter. Includes pump. Tandem rear axles.	1,163	-156
3200456	O	<b>Rear Axle Ratio - 4.56.</b> ✓	0	0
3334004	S	<b>Dual Rear Brakes 16-1/2x7 in. to 46K;</b> Bendix ES-extended service S-cam.	0	0
3392005	S	<b>Dual Rear Brake Drums: cast.</b>	0	0
3407050	S	<b>Dual Rear Hubs: Aluminum hub pilot 46K</b> 11-1/4 in. bolt circle.	0	0
3441972	S	<b>ConMet PreSet Plus Hub package; dual rear axle.</b>	0	0
3465002	S	<b>Dual Rear axle automatic slack adjusters.</b>	0	0
3485209	O	<b>Spring Brake: 3030 high output dual.</b>	23	0
3495226	O	<b>Bendix 4S/4M anti-lock brake system.</b>	-3,677	0
3500012	O	<b>Replace standard mount w/ high mount for rear</b> rear axle brake chambers.	0	0
3500057	O	<b>Interaxle Driveline: 1 Dana SPL170XL</b> Tandem Rear Axles Only	-175	-2
3532194	O	<b>Wheel Differential Lock for Dana Spicer axles</b> D40-170(P)/D46-170(H)(P)(WT) forward rear axle & rear rear axle.	2,816	112
3749209	O	<b>Rear suspension: Tandem Chalmers 854-46-H 46K.</b> 54 in. axle spacing. Unladen Height: 12.5 in. Laden Height: 10.1 in. Standard restrictor can.	2,481	226
3808025	O	<b>Non-steerable pusher axle: Watson Chalin AL2200</b> 23K Standard track.	15,513	2,296
3820348	O	<b>16.5x7 in. Bendix Non-RSD brakes for use with</b> 21K or 23K non-steerable pusher assembly (included w/ axle).	0	0
3820698	O	<b>Cast brake drums 16.5x7 for non-steerable</b> 21K or 23K pusher axle.	0	0
3821703	O	<b>Non-steerable pusher Hubs Iron hub pilot 10-hole</b> 11.25 in. bolt circle for use with 21K or 23K axle.	0	30
3828339	O	<b>Pusher or Tag: gauge/switch dash-mounted; gauge</b> and pressure regulator mounted left of driver.	0	0
3829025	U	<b>SPECIAL DRILLING: ADDL HOLES/</b> <i>Narr SPECIAL DRILLING: ADDL HOLES/</i>	77	0
3830145	O	<b>Delete standard heavy-duty air springs for rear</b> suspension.	-37	-28
3841054	O	<b>1st Pusher location: 54 in. from c/l Forward</b> tandem axle or single rear axle.	0	0

Price Level: January 1, 2022

100% Complete

Date: October 03, 2022

Deal: MAS MML ALM ACCA

Quote Number: QUO-910740-X0Z1V0

Printed On: 10/3/2022 10:02:38 AM





# KENWORTH

Sales Code	Std/ Opt	Description	\$ List	Weight
<b>Tires &amp; Wheels</b>				
4077546	O	<b>Front tires: Bridgestone M870 425/65R22.5 20PR</b> 44.9in. diameter, all position. On/Off highway. Wide-base tire. 20.76in SLR.	200	156
4238857	O	<b>Rear tires: Goodyear Endurance LHD 11R24.5 14PR</b>	1,064	220
4783845	O	<b>1 Non-Steerable Pusher: 4 Yokohama RY023 295/75R 22.5 14PR. 4-4.</b>	-752	0
4900008	O	<b>Rear Tire Quantity: 8</b>	0	0
5045216	O	<b>Front Wheel: Alcoa 82362 22.5x12.25 aluminum,</b> with Lvl One [TM] finish High Polish, hub-pilot mount. 11400lb. maximum rating. Super single. Standard track axles may be over 102 in. w/425 tires. Air disc brake compatible.	-102	-10
5245276	O	<b>Rear Wheel: Alcoa 98U63 Out/ACC 50409 INS 24.5X8.</b> AL/STL High Polish.	656	-28
5783374	O	<b>Non-Steerable Pusher Wheel:Alcoa ULT39/Acc 50344</b> 22.5x8.25 4-4, aluminum outside with Lvl One[TM] finish/steel Steel Armor[TM] powder coat inside, hub-pilot mount. 7400 lb. maximum rating. Includes wheel guards. Air disc brake compatible. Code is priced per pair of wheels.	434	-25
5853906	O	<b>Powder coat white steel wheel. Use in conjunction</b> with front, dual front, rear, spare or lift axle wheel code(s). All wheels on chassis must have same finish color.	0	0
5900008	O	<b>Rear Wheel/Rim Quantity: 8</b>	0	0
<b>Frame &amp; Equipment</b>				
6056400	O	<b>Frame Rails: 10-3/4 x 3-1/2 x 3/8in. Steel 285in.</b> to 336 in. Truck frame weight is 3.48 lb.-in. per pair of rails. Section modulus is 17.80, RBM is 2,132,000 in.-lbs per rail. Frame rail availability may be restricted based upon application, axle/suspension capacity, fifth wheel setting, or component/dimensional specifications. The results of the engineering review may result in a change to the requested frame rail. If a change is required Kenworth Application Engineering will advise the dealer of the appropriate material specification for a substitute rail.	375	403
6141400	O	<b>Full Steel Insert: for 10-5/8 in. or 10-3/4 in.</b> Steel 285 in. to 336 in. or 2nd insert for 11-5/8 in. steel frame. Adds 1,149,000 in.-lb to main rail RBM. Truck insert weight is 2.05 lb.-in. per pair of rails. Full frame insert length is equal to wheelbase plus rear frame cutoff plus dimension forward of front axle by model: T660, T680, T800, T880 = 21.26 in.; C500B = bumper setting minus 0.79 in.; W900B = 5.27 in., W900L = 1.50 in., W900S = 3.27 in.; T440/T470 50 in. bumper setting = 21.26 in., T470 73 in. bumper setting = 72.3 in.	2,385	648
6302461	O	<b>Bumper: Tapered chrome steel channel. Requires a bumper setting code.</b>	592	63
6319485	S	<b>48.5 in. Bumper setting. Requires a bumper code.</b>	0	0
6324025	O	<b>Front tow hook: Center mounted, cast.</b>	258	28

Price Level: January 1, 2022

100% Complete

Date: October 03, 2022

Deal: MAS MML ALM ACCA

Quote Number: QUO-910740-X0Z1V0

Printed On: 10/3/2022 10:02:38 AM





Sales Code	Std/Opt	Description	\$ List	Weight
		Requires iron front drive brackets.		
6390001	O	<b>Steel shackle links.</b>	10	8
6391203	O	<b>Custom Frame Layout: 3-4 chassis</b> CFL F/T: LH UNDER CFL C/M: MOVE REARMOST XMBR FAR ENOUGH BACK SO THAT FWD MOST BOLT HOLES ARE PAST THE REAR MOST RADIUS OF RR TIRES CFL BBX: NO ADDL HOLES IN CUTOFF AREA; CUTOFF TO BE MODIFIED	375	0
6397001	O	<b>Huck bolts throughout frame, where possible.</b>	307	0
6400636	O	<b>Battery box cantilever aluminum BOC with fiberglass cover.</b>	171	8
6409902	O	<b>Battery box location: RH Side.</b>	116	15
6451090	S	<b>T470,C5, T6, T8 non-polished DPF/SCR or CNG cover</b> diamond plate w/ step. For use w/ 2010 or later exhaust systems. For T8, use extended length non-polished battery box on opposite rail to match the length of under cab components. End plates will be painted standard black frame color.	0	0
6679864	O	<b>Final end-of-frame cut-off dimension will be modified to greater than or equal to 75 in.</b>	0	0
6721102	S	<b>Rear mudflap arms: Betts B-25 standard-duty, straight.</b> Includes B1732 mounting brackets as standard.	0	0
6722000	S	<b>Rear mudflap shields: White plastic antisail w/ Kenworth logo.</b>	0	0
6742009	S	<b>Square end-of-frame w/o crossmember; non-towing.</b>	0	0
<b>Fuel Tanks &amp; Equip</b>				
7210120	O	<b>Fuel Tank: 120 US gallon 24.5in. aluminum under</b> replace. Class 8 fuel tanks w/o locking caps include an anti-siphon device on the filler neck.	214	63
7722153	S	<b>Small round DEF tank, 14 gallons.</b> The DEF tank will be located on the side you specified. If you have specific configuration or body builder concerns, please utilize the Custom Frame Layout option. Standard capacity is calculated by fuel capacity of the vehicle and will accommodate two diesel fill-ups for every DEF fill-up. For 1:1 DEF fuel fill ratio, add 7889204.	0	0
7821100	O	<b>Heavy-duty 7in. steel supports/straps for one</b> 24.5 in tank. Two supports per tank.	429	18
7889081	O	<b>Polish only 7in. stainless steel straps for one</b> 24.5in. tank; 2 straps per tank.	158	0
7889203	S	<b>DEF to fuel fill ratio 2:1 or greater.</b>	0	0
7889245	S	<b>Anti-siphon device in fuel tank filler neck.</b> For any number of fuel tanks.	0	0
7889604	S	<b>DEF tank location is LH.</b>	0	0
7920120	O	<b>Location: 120 gal fuel tank LH under cab</b>	0	0
<b>Cab &amp; Equipment</b>				

Price Level: January 1, 2022

100% Complete

Date: October 03, 2022

Deal: MAS MML ALM ACCA

Quote Number: QUO-910740-X0Z1V0

Printed On: 10/3/2022 10:02:38 AM





# KENWORTH

Sales Code	Std/ Opt	Description	\$ List	Weight
8025301	S	<b>Cab: Stamped aluminum cab with panoramic curved</b> glass windshield. Standard with stamped aluminum doors, heavy duty in-swinging hinges, and triple sealed doors. Manufactured using self-piercing rivets and structural adhesive. Includes LED exterior marker lights and turn signals.	0	0
8090604	O	<b>Hood: T880 Standard Length With Mechanically</b> Fastened Fenders. 122.6 inch BBC.	345	15
8108011	S	<b>Cab HVAC - Day Cab and 40in Sleeper</b> System With Defrost, A/C, and 48,000 BTU/hr Heater. Includes automatic temperature control with one touch defrost operation and dash mounted cab temperature and solar intensity sensors. Pleated fresh air filter and cabin recirculation air filter standard. The Kenworth HVAC system is designed to provide optimal heating and cooling in all operating environments without need for additional insulation. Cab HVAC without sleeper heater AC is available with 40in sleeper.	0	0
8201047	S	<b>Kenworth Smartwheel: 18 in. Non-Leather With</b> Integrated Radio and Cruise Controls.	0	0
8201051	O	<b>Column Mtd Retarder Control, RH Side</b> Use with Manual & Allison Transmissions Only.	0	0
8201200	S	<b>Adjustable telescoping tilt steering column.</b>	0	0
8203196	O	<b>Dash Mounted Compact Trailer Brake Valve.</b> Self Returning.	0	0
8205202	U	<b>PTO WIRING W/O DASH SW</b> <i>Narr PTO WIRING W/O DASH SW</i>	30	0
8205283	U	<b>Info for C/I PTO: Chelsea 10 Bolt</b>	0	0
8221160	O	<b>Gauge: Engine Oil Temperature Gauge With Integral</b> warning light. The NavPlus HD unit includes a virtual engine oil temperature gauge.	40	0
8222404	S	<b>Gauge: DD Virtual Gauge - Oil Temp Engine</b>	0	0
8222409	S	<b>Gauge: DD Virtual Gauge - Air Filter</b> Restriction	0	0
8222413	S	<b>Gauge: DD Virtual Gauge - Manifold</b> Pressure Boost	0	0
8222414	S	<b>Gauge: DD Virtual Gauge - Engine Percent</b> Torque	0	0
8222712	O	<b>Gauge: Fuel filter restriction gauge.</b>	135	0
8225658	O	<b>Gauge: Axle oil temperature, dual-drive axle.</b> (2 gauges) w/integral warning light.	215	0
8282027	S	<b>Main Instrument Package: 15" Digital Display.</b> Includes Speedometer, Tachometer, Primary Air Pressure, Secondary Air Pressure, Fuel Level #1, DEF Level, DPF Filter Status, Fuel	0	0

Price Level: January 1, 2022

100% Complete

Date: October 03, 2022

Deal: MAS MML ALM ACCA

Quote Number: QUO-910740-X0Z1V0

Printed On: 10/3/2022 10:02:38 AM





Sales Code	Std/Opt	Description	\$ List	Weight
		Economy, Oil Pressure, Coolant Temp, OAT and Voltmeter, and Air Application.		
8300008	S	<b>Interior color: Slate Gray</b>	0	0
8330102	S	<b>Interior package: Vantage daycab</b> Includes durable headliner and vinyl sidewalls with geometric patterned trim and anodized aluminum accents throughout. Convenient overhead storage cubbies, full size glove box, two center console cupholders, and large door pad map pocket. Standard LH/RH power windows, electric door locks, interior LED lighting, nighttime-friendly red ambient lighting for dash and footwell, and door mounted courtesy light. Includes two standard 12V power outlets. Driver sunvisor includes strap.	0	0
8390634	S	<b>Rubber floormat</b>	0	0
8410278	O	<b>Driver Seat: GT702 HB with DuraCloth w/ Vinyl</b> material. The GT702 is standard with a single air bag, scissor linkage seat suspension that incorporates seat height memory, auto-leveling valves with exit air dump, and adjustable damper. It includes a dual chamber lumbar support, 10in Fore/Aft adjustment, 5in Up/Down adjustment with protection zones, 2.5in pan extension, 51 degree seat back recline, and 16 degree full seat tilt. Includes 3-point matching seat belts. DR seat standard w/ dual armrests.	291	10
8480120	S	<b>Rider Seat: GT100 Toolbox HB with DuraCloth w/ Vinyl</b> material. The GT100 seats are standard with fixed base. Includes 3-point matching seat belts. Rider seat standard w/ LH armrest.	0	0
8490181	S	<b>Seat Color: Black</b>	0	0
8601432	O	<b>Kenworth Radio DEA710 AM/FM/WB/USB, Bluetooth</b>	37	0
8698974	S	<b>Base Level Audio System - Daycab:High Performance</b> Door Speakers.	0	0
8699926	O	<b>CB installation kit: Center mounted of header.</b> W/header mounted quick release CB mount. One red power post & one black ground post. Includes dual antenna leads located on the mirror brackets. Includes dual antenna & separate speaker.	289	2
8700197	S	<b>Turn Signal: Non-Self Cancelling</b>	0	0
8700283	S	<b>LH and RH Trip Ledge Rain Deflectors</b>	0	0
8700663	S	<b>Kenworth TruckTech+</b> The Kenworth Remote Diagnostics system provides the Worlds Best reporting of engine and aftertreatment fault codes, as well as enhanced support for the truck owner through rapid communication of fault severity and recommended actions. This option is Standard on all Heavy Duty Kenworths with a PACCAR MX engine, Cummins X15 engine, PX engine or Natural Gas engine. Optional on Medium Duty Kenworths.	0	0
8800260	O	<b>Long grabhandle RH side mounted to side-of-cab</b> exhaust.	66	2
8800262	O	<b>Long grabhandle LH side mounted to side-of-cab</b> exhaust.	66	2

Price Level: January 1, 2022

100% Complete

Date: October 03, 2022

Deal: MAS MML ALM ACCA

Quote Number: QUO-910740-X0Z1V0

Printed On: 10/3/2022 10:02:38 AM





Sales Code	Std/Opt	Description	\$ List	Weight
8800402	S	<b>Dual Cab Interior Grabhandles: A Pillar Mounted</b> Dash Wrap and B Pillar Mounted Grabhandles	0	0
8832113	S	<b>Kenworth Daylite Door with standard LH/RH</b> electric door locks and LH/RH electric window controls.	0	0
8841618	O	<b>Dual rectangular air horn 23 in. LH &amp; RH top of</b> roof. Includes air horn covers.	246	4
8850139	S	<b>Look-Down, Pass. Door, Black 11x6</b>	0	0
8865002	S	<b>Aero Mirror: Dual Kenworth Aerodynamic Motorized</b> heated mirrors, 7in X 13in with cab color mirror shell and black mirror arms. Also includes LH/RH heated 6in X 7in convex mirrors. Mirror brackets set for 8-1/2 ft load width. Mirror controls located on driver side door pad.	0	0
8871446	S	<b>Rear cab stationary window 19in x 36in</b>	0	0
8890038	O	<b>3.5in x 11.5in Plastic Records Holder:Mounted On</b> Rear Cab Panel. Not available With Sleeper Or 2 Person Bench Seat.	64	0
8890101	S	<b>One-piece bonded-in windshield with curved glass.</b> Standard.	0	0
8890135	S	<b>Exterior stainless steel sunvisor.</b>	906	19
8890300	O	<b>Fender close-out: Below headlamp, behind</b> bumper. *NOT available with 3-piece bumper.	209	0
8890348	O	<b>Wheelwell Fender Extension: 4.5 inches</b>	19	1
8890876	S	<b>Kenworth Cab/Sleeper Air Suspension.</b>	0	0
<b>Lights &amp; Instruments</b>				
9010553	S	<b>Headlamps: SAE Dual Halogen Complex Reflector</b>	0	0
9022137	S	<b>Marker Lights: Five, rectangular, LED</b>	0	0
9030016	S	<b>Turn Signal Lights: Flush mounted LED. Mounted at</b> top of fender wheel arc.	0	0
9030052	S	<b>LED Stop,Turn,Tail: With Two LED</b> Backup Lights and With An LED License Plate.	0	0
9090027	O	<b>Headlamps to turn on when wipers are active.</b>	0	0
9090039	S	<b>Marker Lights: Interrupter Switch.</b> Included in Turn Signal For All Models Except T3. The T3 Switch Is In The Dash.	0	0
9090052	O	<b>Brake Lights on when Engine Brake Active.</b> Can only be selected when chassis also has engine brake. Cannot be used with options to delete engine brake.	0	0
9090126	O	<b>Electric Backup Alarm: Meets SAE J994 &amp; OSHA</b> requirements.	167	4
9090849	O	<b>Polyswitches replacing fuses. Switch will</b> automatically reset after removal of excess load.	49	0

Price Level: January 1, 2022

100% Complete

Date: October 03, 2022

Deal: MAS MML ALM ACCA

Quote Number: QUO-910740-X0Z1V0

Printed On: 10/3/2022 10:02:38 AM





Sales Code	Std/Opt	Description	\$ List	Weight
<b>Air Equipment</b>				
9101219	O	<b>Air Dryer: Bendix AD-HF Extended Purge Heated</b> With Puraguard	132	0
9108001	S	<b>Moisture ejection valve w/ pull cable drain.</b>	0	0
9110020	O	<b>Full Truck Kit</b> Gladhands mounted at end-of-frame. Seven-way female receptacle mounted at end-of-frame in taillamp bracket. Kit includes dash mounted trailer air supply valve, trailer hand control valve, and hoses/fittings for the valves. Dash mounted parking brake valve, tractor protection valve, and spring brake inversion/relay valves are standard.	853	15
9140020	S	<b>Nylon air tubing in frame &amp; cab, excluding hoses</b> subject to excessive heat or flexing.	0	0
9140085	O	<b>Bendix LQ-5 ratio valve:for Kenworth-installed</b> pusher/tag. LQ-5 valve limits the amount of air applied to the pusher brakes. Helps prevent lockup in lightly loaded conditions.	171	2
9140254	O	<b>Locate air dryer inside RH rail BOC.</b> This code requires the use of a custom frame layout code.	0	0
9140288	O	<b>Air tanks: clear of transmission area.</b> This code requires the use of a custom frame layout code.	0	0
9140328	O	<b>Trailer ABS electric supply through SAE J560</b> 7-pin connector per TMC RP137).	0	0
<b>Extended Warranty</b>				
9200021	S	<b>Base Warranty - Standard Service Heavy Duty</b> 12 months / 100,000 miles / 160,000 km.	0	0
9212611	O	<b>24 Month TruckTech+ Subscription for Cummins</b> Engines	0	0
9220001	O	<b>Base Warranty: Emissions</b> 5YR/100K MI - EPA Engine (Does not include CARB Clean Idle sticker)	0	0
<b>Miscellaneous</b>				
9407014	U	<b>PREPAID FREIGHT ADJUSTMENT</b> <i>Narr PREPAID FREIGHT ADJUSTMENT</i>	-300	0
9409852	O	<b>GHG Secondary Manufacturer: Does Not Apply</b>	0	0
9490003	O	<b>Additional lead time required for off highway &amp;</b> /or specialty component truck.	0	0
9490206	O	<b>Warning triangle reflector kit: Shipped loose.</b> Kit consists of 3 triangles in plastic carrying case. Not floor mounted.	48	4
9490406	O	<b>One 5 lb. dry chemical type fire extinguisher</b> mounted outboard of rider seat. Class ABC.	145	11
9491659	S	<b>VMUX Architecture</b>	0	0
<b>Promotions</b>				
9510842	U	<b>TC560 Q4 2022 CLASS 8 SALES PROGRAM</b> <i>Narr TC560 Q4 2022 CLASS 8 SALES PROGRAM</i>	0	0

Price Level: January 1, 2022

100% Complete

Date: October 03, 2022

Deal: MAS MML ALM ACCA

Quote Number: QUO-910740-X0Z1V0

Printed On: 10/3/2022 10:02:38 AM



Sales Code	Std/Opt	Description	\$ List	Weight
<b>Paint</b>				
9700000	O	<b>Paint color number(s).</b>	0	0
		N9702 A - L0225 WHITE N9720 FRAME N0001 BLACK		
9943004	O	<b>Bumper Unpainted</b>	0	0
9943048	O	<b>Day Cab Bulk Paint</b>	0	0
9943050	O	<b>Day Cab Standard Paint</b>	0	0
9944820	S	<b>1 - Color Paint - Day Cab</b> Color will be White if no other color is specified.	0	0
9965510	S	<b>Base coat/clear coat.</b> The Kenworth Color Selector contains additional instructions, as well as information on Kenworth paint guidelines and surface finish applications. Kenworth is standard with Dupont Imron Elite paint.	0	0

**Order Comments**

<b>Total List Price (W/O Freight &amp; Warranty &amp; Surcharges )</b>	\$279,527
Marketing and Service Support Fee	\$1,040
Prepaid Freight	\$2,825
<b>Total Surcharge/Options Not Subject To Discount</b>	\$0
<b>Total Weight</b>	20,831

**Prices and Specifications Subject to Change Without Notice.**

Unpublished options may require review/approval.  
Dimensional and performance data for unpublished options may vary from that displayed in CRM.

**PRICING DISCLAIMER**

*While we make every effort to maintain the web site to preserve pricing accuracy, prices are subject to change without notice. Although the information in this price list is presented in good faith and believed to be correct at the time of printing, we make no representations or warranties as to the completeness or accuracy of this information. We reserve the right to change, delete or otherwise modify the pricing information which is represented herein without any prior notice. We carefully check pricing specifications, but occasionally errors can occur, therefore we reserve the right to change such prices without notice. We disclaim all liability for any errors or omissions in the materials. In no event will we be responsible for any damages of any nature whatsoever from the reliance upon information from these materials. Please check your order prebills to confirm your pricing information*

Price Level: January 1, 2022  
Deal: MAS MML ALM ACCA  
Printed On: 10/3/2022 10:02:38 AM

100% Complete

Date: October 03, 2022  
Quote Number: QUO-910740-X0Z1V0





**Shipping Destinations**

**Intermediate Destination:**

Final Destinations	Quantity
--------------------	----------



# TRUCKWORX

Jay Callaway  
 Truckworx – Kenworth  
 2220 Finley Blvd  
 Birmingham, AL 35234  
 Office: 205.326.6170  
 Cell: 601.702.1923  
 Email: jonathanc@truckworx.com  
 www.TRUCKWORX.com

Attn: ACCA County Commissioners

January 1, 2023

Dear ACCA Administration:

Truckworx is proposing lowest cost ownership by offering the most aggressive residual value to the county members affiliated with the association. **Please note orders must be placed by March 15, 2023, and production will be limited to 71 slots for ACCA's 2023 contract.** First come, first serve basis will be the methodology Truckworx will utilize to fulfill orders. Please review Truckworx proposal for the Heavy-Duty Dump Truck Chassis Option C, pursuant to the Alabama Joint Bid Program for 2023 below.

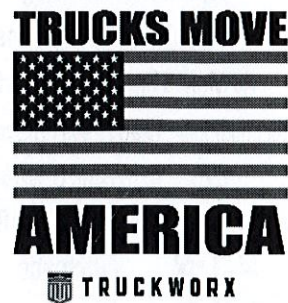
<b>Heavy Duty Dump Chassis Option C 2024 T880S Kenworth Tri-axle dump truck</b>	
<b>Engine MX13</b>	510HP 13-liter engine
<b>Transmission Allison w/PTO</b>	4500 RDS
<b>Front Axle Meritor</b>	20k
<b>Rear Axle Dana Spicer</b>	46k
<b>Cab to Axle for Dump Truck</b>	141
<b>Color</b>	White
<b>Tires</b>	11R24.5
<b>Wheels</b>	Polished Aluminum
<b>Ratio</b>	4.78
<b>Fan hub on/off or Two speed fan hub</b>	Fan hub Horton 2 speed
<b>Cooling Module</b>	1330 square inches
<b>Cast Iron Center Tow Hook</b>	Towing hook
<b>Alternator</b>	160 amp
<b>ACCA Contract Price: \$209,000.00</b>	
<b>51 Slots for the year</b>	
<b>See Addendum A</b>	



Thank you for your consideration regarding a Kenworth Truck. Please feel free to contact me if you have any questions. I look forward to providing you with "The World's Best!"

CC File: Martha Cooke, Corporate Government Coordinator; 601.955.6949

Jay Callaway,  
 Vice President of Government Affairs









TRUCKWORX KENWORTH - BIRMINGHAM (K415)  
 2220 FINLEY BOULEVARD  
 BIRMINGHAM, Alabama 35234

MAS MML ALM ACCA  
 100 N JACKSON ST  
 MONTGOMERY, Alabama 36104  
 United States of America

Jonathan Callaway  
 Cell Phone: 601-702-1923  
 Office Phone: 601-939-5300  
 Email: jonathanc@truckworx.com

BUYER

## Vehicle Summary

Model:	<b>Unit</b>	T880 Series Conventional	Fr Axle Load (lbs):	20000
Type:		FULL TRUCK	Rr Axle Load (lbs):	46000
Description 1:			G.C.W. (lbs):	88501
Description 2:		ACCA T880S MXAUTO W LA		
Intended Serv.:	<b>Application</b>	Local pickup & delivery: Vehicles which	Road Conditions:	
Commodity:		Gravel/crushed rock/sand.	Class A (Highway)	96
Type:	<b>Body</b>	End dump.	Class B (Hwy/Mtn)	3
Length (ft):		16	Class C (Off-Hwy)	1
Height (ft):		14	Class D (Off-Road)	0
Max Laden Weight (lbs):		88500	Maximum Grade:	6
			Wheelbase (in):	227
			Overhang (in):	61
			Fr Axle to BOC (in):	86
			Cab to Axle (in):	141
No. of Trailer Axles:	<b>Trailer</b>	0	Cab to EOF (in):	202
Type:			Overall Comb. Length (in):	317.5
Length (ft):		0		
Height (ft):		0	<b>Special Req.</b>	
Kingpin Inset (in):		0	U.S. Domestic registry, 50-state.	
Corner Radius (in):		0		
	<b>Restrictions</b>			
Length (ft):		120		
Width (in):		102		
Height (ft):		13.5		

Approved by:



Date:

10/4/22

Note: All sales are F.O.B. designated plant of manufacture.

Price Level: January 1, 2022

100% Complete

Date: August 02, 2022

Deal:

Quote Number: QUO-886811-B0R6M7

Printed On: 8/2/2022 9:19:26 AM





Sales Code	Std/Opt	Description	\$ List	Weight
<b>Model</b>				
0000810	S	<b>T880 Series Conventional</b>	213,378	15,549
0070060	S	<b>T880</b>	0	0
0072000	O	<b>Chassis operation will not incl. stationary</b> application. Stationary operation is defined as running the engine under load while stationary at a substantial fraction of engine gross horsepower (60% or greater) for an extended period of time (longer than 5 - 10 minutes).	0	0
0080075	O	<b>Dealer/Customer declines engine w/CARB Idle</b> Emissions Reduction Feature.	0	0
0090000	S	<b>Non-Sleeper w/rear axle capacity less than 59K.</b>	0	0
0098401	O	<b>State of Registry: Alabama</b>	0	0
<b>Engine &amp; Equipment</b>				
0701206	O	<b>MX-13 510 510@1600 1850@1000</b> 2021 with Engine Brake N09020 AE001 NO....ENBL MX RETARDER IN NEUTRAL N08200 AE002 650...IDLE TARGET N09100 AA003 65....CC MAX TARGET SPD N09110 AA004 10....CC MIN ENABLE SPD N09120 AA005 OFF...DYNAMIC CC ENABLE N09440 AA061 2000..CAB:MAX ENG SPD-ACCEL CNTRL N09430 AA062 2000..CAB: MAX ENG SPD - SW CNTRL N09420 AA063 6.....CAB: MAX VEH SPD N09510 AA065 800...CAB: DEDICATED PRESET "-" N09520 AA066 900...CAB: DEDICATED PRESET "+" N09780 AA049 CNCL..CAB: CUSTOM PRESET 1 FUNC N09640 AA050 0.....CAB: CUSTOM PRESET 1 N09790 AA051 CNCL..CAB: CUSTOM PRESET 2 FUNC N09650 AA052 0.....CAB: CUSTOM PRESET 2 N09800 AA053 CNCL..CAB: CUSTOM PRESET 3 FUNC N09660 AA054 0.....CAB: CUSTOM PRESET 3 N09500 AA060 OFF...CAB: PRESET +/- SW TYPE N09630 AA067 TRQ...CAB:ACCEL PEDAL TYPE IN PTO N09400 AA068 YES...CAB:ACCEL ACTV IN CAB PTO N09470 AA055 OFF...CAB: CLUTCH INTLK N09840 AA056 OFF...CAB: CUSTOMER INTLK N09480 AA057 ON....CAB: NEUTRAL INTLK N09460 AA058 ON....CAB: PARK BRK INTLK N09490 AA059 ON....CAB:SER BRK INTLK:NO PTO N09540 AA074 2000..REM:MAX ENG SPD-ACCEL CNTRL N09530 AA075 2000..REM:MAX ENGSPD-SW/TSC1 CTRL N09610 AA077 800...REM: DEDICATED PRESET "-" N09620 AA078 900...REM: DEDICATED PRESET "+" N09810 AA043 CNCL..CAB/REM:CUSTOM PRESET1 FUNC N09670 AA044 750...CAB/REM: CUSTOM PRESET 1 N09820 AA045 CNCL..CAB/REM:CUSTOM PRESET2 FUNC	1,767	0

Price Level: January 1, 2022

100% Complete

Date: August 02, 2022

Deal:

Quote Number: QUO-886811-B0R6M7

Printed On: 8/2/2022 9:19:26 AM





Sales Code	Std/Opt	Description	\$ List	Weight
		N09680 AA046 850...CAB/REM:CUSTOM PRESET 2		
		N09830 AA047 CNCL..CAB/REM:CUSTOM PRESET3 FUNC		
		N09690 AA048 950...CAB/REM: CUSTOM PRESET 3		
		N09600 AA079 OFF...REM: PRESET +/- SW TYPE		
		N09410 AA069 YES...PTO REM PEDAL ENABLE		
		N09560 AA070 OFF...REM: CLUTCH INTLK		
		N09700 AA071 OFF...REM: CUSTOMER INTLK		
		N09570 AA072 0.....REM: NEUTRAL INTLK		
		N09580 AA073 0.....REM:SER BRK INTLK:NO PTO		
		N09550 AA076 650...REM: MIN ENG SPD		
		N09450 AA064 650...CAB: MIN ENG SPD		
		N09760 AA009 5.....DRIVER REWARD VEH SPD BONUS		
		N09770 AA010 -5....DRIVER REWARD VEH SPD PNLTY		
		N09750 AA013 NONE..OFFSET MODE		
		N09720 AA015 3.....MIN SPD FOR DR SHIFT AID		
		N09730 AA016 1.....DSA LOWEST ACTV GEAR		
		N09740 AA017 6.....DSA HIGHEST ACTV GEAR		
		N09340 AA019 YES...EIST PARK BRK RESET ENABLE		
		N09300 AA022 30....EIST LO CLNT TEMP OVERRIDE		
		N09290 AA023 80....EIST HI AMBAIR TEMP OVRRDE		
		N09280 AA024 39....EIST LO AMBAIR TEMP OVRRDE		
		N09260 AA025 5.....EIST PTO MAX IDLE TIME		
		N09230 AA026 5.....EIST PARKED MAX IDLE TIME		
		N09220 AA027 5.....EIST STANDSTILL IDLE TIME		
		N09240 AA029 YES...EIST RESET FROM ENG LOAD		
		N09250 AA030 NO....EIST OVERRIDE FROM ENG LOAD		
		N09200 AA031 0.....EIST EXPIRATION DISTANCE		
		N09310 AA032 YES...EIST ACCEL PEDAL RESET		
		N09330 AA033 YES...EIST SERVICE BRK RESET		
		N09320 AA034 YES...EIST CLUTCH PEDAL RESET		
		N09270 AA035 YES...EIST PTO OVERRIDE		
		N08030 AA086 65....MAX ACCEL PEDAL VEH SPD		
		N08000 AA087 0.....VSL EXPIRATION DISTANCE		
		N08020 AA088 65....LRSL SPD LMT		
		N09350 AA042 1500..FAST IDLE CNTRL MAX ENG SPD		
		N09050 AA037 4.....DSL SPD OFFSET		
		N09040 AA038 2.....AUTO RTRDR VEH SPD OFFSET		
		N09030 AA039 0.....TIME DELAY FOR RTRDR ACT		
		N09130 AA006 MT....MULTI TORQUE IN CC		
		N09080 AQ001 4.....PCC Negative Offset		
		N09090 AQ002 4.....PCC Positive Offset		
		N09710 AA089 NO....REMOTE INPUTS IN CAB PTO		
		N08200 AE002 650...IDLE TARGET		
1000046	O	<b>EPA Emissions Warranty Engine</b>	0	0
1000151	S	<b>PremierSpec</b>	0	0
1000206	O	<b>Engine monitoring protection -Shutdown- PACCAR</b> MX engine parameter.	0	0
1000243	O	<b>Gearing Analysis: Performance</b> power before economy results.	0	0

Price Level: January 1, 2022

100% Complete

Date: August 02, 2022

Deal:

Quote Number: QUO-886811-B0R6M7

Printed On: 8/2/2022 9:19:26 AM





# KENWORTH

Sales Code	Std/Opt	Description	\$ List	Weight
1000256	O	Customer's Typical Operating Spd: 64 MPH	0	0
1000282	O	<b>MX Retarder State Cruise Control On Manual Mode</b> Selecting this code will program the engine controller to make manual mode available when cruise control is on, but not set, and the engine brake switch is on. Manual mode means the engine retarder activates whenever the throttle pedal is not depressed. 2013+	0	0
1000684	O	<b>Effective VSL Setting NA</b>	0	0
1000858	O	<b>Engine Idle Shutdown Timer Disabled</b>	0	0
1000891	O	<b>Eff EIST NA Expiration Miles</b> Use only with MX and Cummins engines	0	0
1006003	S	<b>Air Compressor: WABCO 25.9 CFM PACCAR MX</b> 2017+ 440cc Air Compressor	0	0
1051200	S	<b>Air Cleaner: composite firewall mounted PACCAR or</b> Cummins engines	0	0
1099080	O	<b>Pre-cleaner mounted in the hood plenum</b>	311	0
1105210	S	<b>Fan hub: Horton 2-Speed for PACCAR MX</b>	0	0
1123555	S	<b>Cooling module: 1330 square inches.</b> Includes aluminum radiator core, aluminum charge air cooler, translucent surge tank and washer bottle, silicone hoses, and extended life coolant.	0	0
1247231	O	<b>EXH: 2021 RH Under DPF/SCR with Dual SOC</b> tailpipes. Daycab, Extended Daycab, Modular Sleeper	1,696	0
1290436	O	<b>Tailpipe: 7 in. dual 36 in. 45 degree curved.</b>	665	8
1321101	S	<b>Fuel Filter: PACCAR Extended Service Interval</b> On-Engine Fuel/Water Separator. 2021 Emissions MX Engines only.	0	0
1321205	S	<b>Run Aid:Fuel Heat</b> *For Fuel Filter	0	0
1321305	S	<b>Start Aid:12V Heat</b> *For Fuel Filter	0	0
1812163	S	<b>Alternator: PACCAR HDS 160 AMP Brushed</b>	0	0
1821210	S	<b>Batteries: 3 PACCAR GP31 threaded post (700-730)</b> 2100-2190 CCA dual purpose.	0	0
1836102	S	<b>PACCAR Premium 12V Starter with PACCAR MX Engines</b> PACCAR 12 volt electrical system. With centralized power distribution incorporating plug-in style relays. Circuit protection for serviceability, 12-volt light system w/circuit protection circuits number & color coded.	0	0
1840065	S	<b>12V low voltage disconnect for starter battery</b> protection.	0	0
1901017	S	<b>Remote PTO/Throttle, 12-Pin, Engine Bay</b> Remote Control Provision	0	0
1903008	O	<b>Steel Oil Pan for PACCAR MX Engines</b>	1,001	10

Price Level: January 1, 2022

100% Complete

Date: August 02, 2022

Deal:

Quote Number: QUO-886811-B0R6M7

Printed On: 8/2/2022 9:19:26 AM





Sales Code	Std/Opt	Description	\$ List	Weight
<b>Transmission &amp; Clutch</b>				
2016158	O	<b>Transmission: Allison 4500RDS 6-speed</b> w/o retarder, w/PTO provision. 5th generation. For vocational applications. Includes shift control, transmission oil temperature gauge, oil level sensor & heat exchanger. Transynd transmission fluid is standard on all Allison 1000, 2000, 3000 & 4000 series transmissions.	25,056	478
2406453	O	<b>Driveline: 2 Dana SPL250XL 1 centerbearing</b> Low maintenance offering from Spicer. On-highway 350K mi first service interval, 100K mi subsequent service interval on U-joint, splines lubed for life, quick disconnect end caps.	981	83
2410018	O	<b>Torque converter included w/Allison Transmission.</b>	0	0
2410151	O	<b>Pushbutton control center console mounted.</b> Class 8 with Allison Transmission.	0	0
2410204	O	<b>Allison Fuel Sense: Delete</b>	0	0
2410244	O	<b>J1939 Park Brake Auto Neutral</b>	0	0
2410310	O	<b>Allison Neutral at Stop</b>	513	0
2410426	U	<b>ALLISON GEN 5 RDS PKG 223</b> <i>Narr ALLISON GEN 5 RDS PKG 223</i>	0	0
2429378	O	<b>Customer installed transmission PTO in the LH</b> Mounted position (8 o'clock) for Allison 3000 & 4000 transmissions.	0	0
<b>Front Axle &amp; Equipment</b>				
2506181	O	<b>Dana Spicer D2000 Front Axle rated 20K</b> standard track.	371	-27
2621078	O	<b>Front Brakes: 22K Bendix ES S-cam 16.5x6 in.</b>	-494	-46
2690035	O	<b>Front Brake Drum: 22,000 lbs. 16-1/2x6 in. Cast.</b>	-222	104
2702020	O	<b>Front Hubs Iron hub pilot 20,000 lbs. 10 Bolt</b> 16.5x6in. or 7in. or air disc brakes. 10 Bolt, 11-1/4 in. bolt circle. Consider Wheelguards (5850002) with aluminum wheels.	-190	80
2741970	S	<b>ConMet PreSet Plus Hub package; front axle.</b>	0	0
2750001	S	<b>Hubcap: front vented.</b>	0	0
2765001	O	<b>Front Auto Slack Adjuster.</b>	0	0
2866025	O	<b>Front Springs: Taperleaf 20K w/ shock absorbers</b> w/ maintenance-free elastomer spring pin bushings. Standard with rubber pins. T880S set forward axle only.	94	0
2895302	S	<b>Dual power steering gear: 16-22K Sheppard HD94.</b> Heavy duty. Not for use on T3.	0	0
2899336	S	<b>Power Steering Cooler:Radiator Mounted Air-to-Oil</b>	0	0

Price Level: January 1, 2022

100% Complete

Date: August 02, 2022

Deal:

Quote Number: QUO-886811-B0R6M7

Printed On: 8/2/2022 9:19:26 AM





# KENWORTH

Sales Code	Std/ Opt	Description	\$ List	Weight
2900020	O	Front Frame Raised: 1/2 in.	22	0
2900616	O	Threaded Bushings for taperleaf spring 16K, 18/20K, 22K, 40K replacing rubber.	95	0
<b>Rear Axle &amp; Equipment</b>				
3144183	O	Dual Dana Spicer D46-172HP rear axle rated at 46K. w/ 16mm housing and 2.06in. shaft diameter. Includes pump. Tandem rear axles.	1,163	-156
3200478	O	Rear Axle Ratio - 4.78.	0	0
3334004	S	Dual Rear Brakes 16-1/2x7 in. to 46K; Bendix ES-extended service S-cam.	0	0
3392005	S	Dual Rear Brake Drums: cast.	0	0
3407050	S	Dual Rear Hubs: Aluminum hub pilot 46K 11-1/4 in. bolt circle.	0	0
3441972	S	ConMet PreSet Plus Hub package; dual rear axle.	0	0
3465002	S	Dual Rear axle automatic slack adjusters.	0	0
3485209	O	Spring Brake: 3030 high output dual.	23	0
3495226	O	Bendix 4S/4M anti-lock brake system.	-3,677	0
3500012	O	Replace standard mount w/ high mount for rear rear axle brake chambers.	0	0
3500057	O	Interaxle Driveline: 1 Dana SPL170XL Tandem Rear Axles Only	-175	-2
3532194	O	Wheel Differential Lock for Dana Spicer axles D40-170(P)/D46-170(H)(P)(WT) forward rear axle & rear rear axle.	2,816	112
3749209	O	Rear suspension: Tandem Chalmers 854-46-H 46K. 54 in. axle spacing. Unladen Height: 12.5 in. Laden Height: 10.1 in. Standard restrictor can.	2,481	226
3808025	O	Non-steerable pusher axle: Watson Chalin AL2200 23K Standard track.	15,513	2,296
3820348	O	16.5x7 in. Bendix Non-RSD brakes for use with 21K or 23K non-steerable pusher assembly (included w/ axle).	0	0
3820698	O	Cast brake drums 16.5x7 for non-steerable 21K or 23K pusher axle.	0	0
3821703	O	Non-steerable pusher Hubs Iron hub pilot 10-hole 11.25 in. bolt circle for use with 21K or 23K axle.	0	30
3828339	O	Pusher or Tag: gauge/switch dash-mounted; gauge and pressure regulator mounted left of driver.	0	0
3829025	U	SPECIAL DRILLING: ADDL HOLES/ Narr SPECIAL DRILLING: ADDL HOLES/ SPECIAL DRILLING: ADDL HOLES SPECIAL DIRLLING ADDL HOLES FASTENERS IN	77	0
3830145	O	Delete standard heavy-duty air springs for rear suspension.	-37	-28

Price Level: January 1, 2022

100% Complete

Date: August 02, 2022

Deal:

Quote Number: QUO-886811-B0R6M7

Printed On: 8/2/2022 9:19:26 AM





Sales Code	Std/Opt	Description	\$ List	Weight
3841054	O	<b>1st Pusher location: 54 in. from c/l Forward</b> tandem axle or single rear axle.	0	0
<b>Tires &amp; Wheels</b>				
4017183	O	<b>Front Tires: Michelin XZY3 425/65R22.5 20PR</b> 44.7 in. Diameter, All Position. 20.6in. SLR.	314	190
4217226	O	<b>Rear tires: Michelin XMultiEnergyD 11R24.5 16PR</b> 43.4 in. diameter, drive. 20.4 in. SLR. Smartway certified. Code is priced per pair of tires.	1,908	232
4783854	O	<b>1 Non-Steerable Pusher: 4 Bridgestone R268 Ecopia</b> 295/75R22.5 14PR. 40.3 in. diameter, all position. Side wall protector bar. 18.8 in. SLR. 4-4	-362	16
4900008	O	<b>Rear Tire Quantity: 8</b>	0	0
5045216	O	<b>Front Wheel: Alcoa 82362 22.5x12.25 aluminum,</b> with Lvl One [TM] finish High Polish, hub-pilot mount. 11400lb. maximum rating. Super single. Standard track axles may be over 102 in. w/425 tires. Air disc brake compatible.	-102	-10
5245276	O	<b>Rear Wheel: Alcoa 98U63 Out/ACC 50409 INS 24.5X8.</b> AL/STL High Polish.	656	-28
5783374	O	<b>Non-Steerable Pusher Wheel:Alcoa ULT39/Acc 50344</b> 22.5x8.25 4-4, aluminum outside with Lvl One[TM] finish/steel Steel Armor[TM] powder coat inside, hub-pilot mount. 7400 lb. maximum rating. Includes wheel guards. Air disc brake compatible. Code is priced per pair of wheels.	434	-25
5853906	O	<b>Powder coat white steel wheel. Use in conjunction</b> with front, dual front, rear, spare or lift axle wheel code(s). All wheels on chassis must have same finish color.	0	0
5900008	O	<b>Rear Wheel/Rim Quantity: 8</b>	0	0
<b>Frame &amp; Equipment</b>				
6056400	O	<b>Frame Rails: 10-3/4 x 3-1/2 x 3/8in. Steel 285in.</b> to 336 in. Truck frame weight is 3.48 lb.-in. per pair of rails. Section modulus is 17.80, RBM is 2,132,000 in.-lbs per rail. Frame rail availability may be restricted based upon application, axle/suspension capacity, fifth wheel setting, or component/dimensional specifications. The results of the engineering review may result in a change to the requested frame rail. If a change is required Kenworth Application Engineering will advise the dealer of the appropriate material specification for a substitute rail.	375	316
6141400	O	<b>Full Steel Insert: for 10-5/8 in. or 10-3/4 in.</b> Steel 285 in. to 336 in. or 2nd insert for 11-5/8 in. steel frame. Adds 1,149,000 in.-lb to main rail RBM. Truck insert weight is 2.05 lb.-in. per pair of rails. Full frame insert length is equal to wheelbase plus rear frame cutoff plus dimension forward of front axle by model: T660, T680, T800, T880 = 21.26 in.; C500B = bumper setting minus 0.79 in.; W900B = 5.27 in., W900L = 1.50 in., W900S = 3.27 in.; T440/T470 50 in. bumper setting = 21.26 in., T470 73 in. bumper setting = 72.3 in.	2,385	597
6302461	O	<b>Bumper: Tapered chrome steel channel. Requires a</b> bumper setting code.	592	63

Price Level: January 1, 2022

100% Complete

Date: August 02, 2022

Deal:

Quote Number: QUO-886811-B0R6M7

Printed On: 8/2/2022 9:19:26 AM





Sales Code	Std/Opt	Description	\$ List	Weight
6319295	O	29.5 in. Bumper setting. Requires a bumper code.	0	0
6324025	O	Front tow hook: Center mounted, cast. Requires iron front drive brackets.	258	28
6390001	O	Steel shackle links.	10	8
6391201	O	Custom Frame Layout: one chassis CFL F/T: LH UNDER CFL C/M: MOVE REAR MOST XMBR FAR ENOUGH BACK SO THAT FWD MOST BOLT HOLES ARE PAST THE REAR MOST RADIUS OF RR TIRES CFL BBX: NO ADDL HOLES IN CUTOFF AREA; CUTOFF TO BE MODIFIED	1,380	0
6397001	O	Huck bolts throughout frame, where possible.	307	0
6400636	O	Battery box cantilever aluminum BOC with fiberglass cover.	171	8
6409902	O	Battery box location: RH Side.	116	15
6410010	O	Frame access grabhandle(s) LH mounted. Placement and quantity of grabhandles may vary due to FMCSR frame access requirements.	58	0
6410092	O	Frame access grabhandle horizontal mounted at midpoint of sleeper or Daycab.	59	2
6414003	O	Medium aluminum frame access deck plate, 36 in.	234	15
6451090	S	T470,C5, T6, T8 non-polished DPF/SCR or CNG cover diamond plate w/ step. For use w/ 2010 or later exhaust systems. For T8, use extended length non-polished battery box on opposite rail to match the length of under cab components. End plates will be painted standard black frame color.	0	0
6679824	O	Width across front tires exceeds 102 inches. Dealer to review delivery constraints w/transporter.	0	0
6679860	O	Final end-of-frame cut-off dimension will be modified to 61 in. to 65 in.	0	0
6721102	S	Rear mudflap arms: Betts B-25 standard-duty, straight. Includes B1732 mounting brackets as standard.	0	0
6722000	S	Rear mudflap shields: White plastic antisail w/ Kenworth logo.	0	0
6742009	S	Square end-of-frame w/o crossmember; non-towing.	0	0
<b>Fuel Tanks &amp; Equip</b>				
7210120	O	Fuel Tank: 120 US gallon 24.5in. aluminum under replace. Class 8 fuel tanks w/o locking caps include an anti-siphon device on the filler neck.	214	63
7722153	S	Small round DEF tank, 14 gallons. The DEF tank will be located on the side you specified. If you have specific configuration or body builder concerns, please utilize the Custom Frame Layout option. Standard capacity is calculated by fuel capacity of the vehicle and will accommodate two diesel fill-ups for every DEF fill-up. For 1:1 DEF fuel fill ratio, add 7889204.	0	0
7821100	O	Heavy-duty 7in. steel supports/straps for one	429	18

Price Level: January 1, 2022

100% Complete

Date: August 02, 2022

Deal:

Quote Number: QUO-886811-B0R6M7

Printed On: 8/2/2022 9:19:26 AM





Sales Code	Std/Opt	Description	\$ List	Weight
		24.5 in tank. Two supports per tank.		
7839400	O	<b>Extended steps on fuel tank LH under for access;</b> 2 steps, 1 tank.	57	2
7840038	O	<b>Polished cover for 1 DEF tank any size.</b>	352	3
7889081	O	<b>Polish only 7in. stainless steel straps for one</b> 24.5in. tank; 2 straps per tank.	158	0
7889203	S	<b>DEF to fuel fill ratio 2:1 or greater.</b>	0	0
7889245	S	<b>Anti-siphon device in fuel tank filler neck.</b> For any number of fuel tanks.	0	0
7889604	S	<b>DEF tank location is LH.</b>	0	0
7920120	O	<b>Location: 120 gal fuel tank LH under cab</b>	0	0
<b>Cab &amp; Equipment</b>				
8025301	S	<b>Cab: Stamped aluminum cab with panoramic curved</b> glass windshield. Standard with stamped aluminum doors, heavy duty in-swinging hinges, and triple sealed doors. Manufactured using self-piercing rivets and structural adhesive. Includes LED exterior marker lights and turn signals.	0	0
8090139	O	<b>Hood: T880 Set-Fwd Short Length W/Mech. Fastened</b> Fenders	0	0
8108011	S	<b>Cab HVAC - Day Cab and 40in Sleeper</b> System With Defrost, A/C, and 48,000 BTU/hr Heater. Includes automatic temperature control with one touch defrost operation and dash mounted cab temperature and solar intensity sensors. Pleated fresh air filter and cabin recirculation air filter standard. The Kenworth HVAC system is designed to provide optimal heating and cooling in all operating environments without need for additional insulation. Cab HVAC without sleeper heater AC is available with 40in sleeper.	0	0
8201047	S	<b>Kenworth Smartwheel: 18 in. Non-Leather With</b> Integrated Radio and Cruise Controls.	0	0
8201051	O	<b>Column Mtd Retarder Control, RH Side</b> Use with Manual & Allison Transmissions Only.	0	0
8201200	S	<b>Adjustable telescoping tilt steering column.</b>	0	0
8203196	O	<b>Dash Mounted Compact Trailer Brake Valve.</b> Self Returning.	0	0
8205202	U	<b>PTO WIRING W/O DASH SW</b> <i>Narr PTO WIRING W/O DASH SW PTO WIRING W/O DASH SW REF</i> <i>CHASSIS 450857</i>	30	0
8221160	O	<b>Gauge: Engine Oil Temperature Gauge With Integral</b> warning light. The NavPlus HD unit includes a virtual engine oil temperature gauge.	40	0
8222404	S	<b>Gauge: DD Virtual Gauge - Oil Temp Engine</b>	0	0
8222409	S	<b>Gauge: DD Virtual Gauge - Air Filter</b> Restriction	0	0

Price Level: January 1, 2022

100% Complete

Date: August 02, 2022

Deal:

Printed On: 8/2/2022 9:19:26 AM

Quote Number: QUO-886811-B0R6M7





Sales Code	Std/Opt	Description	\$ List	Weight
8222413	S	<b>Gauge: DD Virtual Gauge - Manifold Pressure Boost</b>	0	0
8222414	S	<b>Gauge: DD Virtual Gauge - Engine Percent Torque</b>	0	0
8222712	O	<b>Gauge: Fuel filter restriction gauge.</b>	135	0
8225658	O	<b>Gauge: Axle oil temperature, dual-drive axle. (2 gauges) w/integral warning light.</b>	215	0
8282027	S	<b>Main Instrument Package: 15" Digital Display.</b> Includes Speedometer, Tachometer, Primary Air Pressure, Secondary Air Pressure, Fuel Level #1, DEF Level, DPF Filter Status, Fuel Economy, Oil Pressure, Coolant Temp, OAT and Voltmeter, and Air Application.	0	0
8300008	S	<b>Interior color: Slate Gray</b>	0	0
8330102	S	<b>Interior package: Vantage daycab</b> Includes durable headliner and vinyl sidewalls with geometric patterned trim and anodized aluminum accents throughout. Convenient overhead storage cubbies, full size glove box, two center console cupholders, and large door pad map pocket. Standard LH/RH power windows, electric door locks, interior LED lighting, nighttime-friendly red ambient lighting for dash and footwell, and door mounted courtesy light. Includes two standard 12V power outlets. Driver sunvisor includes strap.	0	0
8390634	S	<b>Rubber floormat</b>	0	0
8410278	O	<b>Driver Seat: GT702 HB with DuraCloth w/ Vinyl</b> material. The GT702 is standard with a single air bag, scissor linkage seat suspension that incorporates seat height memory, auto-leveling valves with exit air dump, and adjustable damper. It includes a dual chamber lumbar support, 10in Fore/Aft adjustment, 5in Up/Down adjustment with protection zones, 2.5in pan extension, 51 degree seat back recline, and 16 degree full seat tilt. Includes 3-point matching seat belts. DR seat standard w/ dual armrests.	291	10
8480120	S	<b>Rider Seat: GT100 Toolbox HB with DuraCloth w/ Vinyl</b> material. The GT100 seats are standard with fixed base. Includes 3-point matching seat belts. Rider seat standard w/ LH armrest.	0	0
8490181	S	<b>Seat Color: Black</b>	0	0
8601432	O	<b>Kenworth Radio DEA710 AM/FM/WB/USB, Bluetooth</b>	37	0
8698974	S	<b>Base Level Audio System - Daycab:High Performance Door Speakers.</b>	0	0
8699926	O	<b>CB installation kit: Center mounted of header.</b> W/header mounted quick release CB mount. One red power post & one black ground post. Includes dual antenna leads located on the mirror brackets. Includes dual antenna & separate speaker.	289	2
8700197	S	<b>Turn Signal: Non-Self Cancelling</b>	0	0

Price Level: January 1, 2022

100% Complete

Date: August 02, 2022

Deal:

Quote Number: QUO-886811-B0R6M7

Printed On: 8/2/2022 9:19:26 AM





Sales Code	Std/Opt	Description	\$ List	Weight
8700283	S	LH and RH Trip Ledge Rain Deflectors	0	0
8700663	S	<b>Kenworth TruckTech+</b> The Kenworth Remote Diagnostics system provides the Worlds Best reporting of engine and aftertreatment fault codes, as well as enhanced support for the truck owner through rapid communication of fault severity and recommended actions. This option is Standard on all Heavy Duty Kenworths with a PACCAR MX engine, Cummins X15 engine, PX engine or Natural Gas engine. Optional on Medium Duty Kenworths.	0	0
8800260	O	<b>Long grabhandle RH side mounted to side-of-cab</b> exhaust.	66	2
8800262	O	<b>Long grabhandle LH side mounted to side-of-cab</b> exhaust.	66	2
8800402	S	<b>Dual Cab Interior Grabhandles: A Pillar Mounted</b> Dash Wrap and B Pillar Mounted Grabhandles	0	0
8832113	S	<b>Kenworth Daylite Door with standard LH/RH</b> electric door locks and LH/RH electric window controls.	0	0
8841618	O	<b>Dual rectangular air horn 23 in. LH &amp; RH top of</b> roof. Includes air horn covers.	246	4
8850139	S	<b>Look-Down, Pass. Door, Black 11x6</b>	0	0
8865002	S	<b>Aero Mirror: Dual Kenworth Aerodynamic Motorized</b> heated mirrors, 7in X 13in with cab color mirror shell and black mirror arms. Also includes LH/RH heated 6in X 7in convex mirrors. Mirror brackets set for 8-1/2 ft load width. Mirror controls located on driver side door pad.	0	0
8871446	S	<b>Rear cab stationary window 19in x 36in</b>	0	0
8890038	O	<b>3.5in x 11.5in Plastic Records Holder:Mounted On</b> Rear Cab Panel. Not available With Sleeper Or 2 Person Bench Seat.	64	0
8890101	S	<b>One-piece bonded-in windshield with curved glass.</b> Standard.	0	0
8890135	S	<b>Exterior stainless steel sunvisor.</b>	906	19
8890348	O	<b>Wheelwell Fender Extension: 4.5 inches</b>	19	1
8890876	S	<b>Kenworth Cab/Sleeper Air Suspension.</b>	0	0
<b>Lights &amp; Instruments</b>				
9010553	S	<b>Headlamps: SAE Dual Halogen Complex Reflector</b>	0	0
9022137	S	<b>Marker Lights: Five, rectangular, LED</b>	0	0
9030016	S	<b>Turn Signal Lights: Flush mounted LED. Mounted at</b> top of fender wheel arc.	0	0
9030052	S	<b>LED Stop,Turn,Tail: With Two LED</b> Backup Lights and With An LED License Plate.	0	0
9090027	O	<b>Headlamps to turn on when wipers are active.</b>	0	0

Price Level: January 1, 2022

100% Complete

Date: August 02, 2022

Deal:

Quote Number: QUO-886811-B0R6M7

Printed On: 8/2/2022 9:19:26 AM





# KENWORTH

Sales Code	Std/Opt	Description	\$ List	Weight
9090039	S	<b>Marker Lights: Interrupter Switch.</b> Included in Turn Signal For All Models Except T3. The T3 Switch Is In The Dash.	0	0
9090052	O	<b>Brake Lights on when Engine Brake Active.</b> Can only be selected when chassis also has engine brake. Cannot be used with options to delete engine brake.	0	0
9090126	O	<b>Electric Backup Alarm: Meets SAE J994 &amp; OSHA</b> requirements.	167	4
9090849	O	<b>Polyswitches replacing fuses. Switch will</b> automatically reset after removal of excess load.	49	0
<b>Air Equipment</b>				
9101219	O	<b>Air Dryer: Bendix AD-HF Extended Purge Heated</b> With Puraguard	132	0
9108001	S	<b>Moisture ejection valve w/ pull cable drain.</b>	0	0
9110020	O	<b>Full Truck Kit</b> Gladhands mounted at end-of-frame. Seven-way female receptacle mounted at end-of-frame in taillamp bracket. Kit includes dash mounted trailer air supply valve, trailer hand control valve, and hoses/fittings for the valves. Dash mounted parking brake valve, tractor protection valve, and spring brake inversion/relay valves are standard.	853	15
9140020	S	<b>Nylon air tubing in frame &amp; cab, excluding hoses</b> subject to excessive heat or flexing.	0	0
9140085	O	<b>Bendix LQ-5 ratio valve:for Kenworth-installed</b> pusher/tag. LQ-5 valve limits the amount of air applied to the pusher brakes. Helps prevent lockup in lightly loaded conditions.	171	2
9140254	O	<b>Locate air dryer inside RH rail BOC.</b> This code requires the use of a custom frame layout code.	0	0
9140288	O	<b>Air tanks: clear of transmission area.</b> This code requires the use of a custom frame layout code.	0	0
9140328	O	<b>Trailer ABS electric supply through SAE J560</b> 7-pin connector per TMC RP137).	0	0
<b>Extended Warranty</b>				
9200006	O	<b>Base Warranty - PACCAR MX-11 &amp; MX-13 Engine</b> 24 months / 250,000 miles / 400,000 km / 6250 hours.	0	0
9200021	S	<b>Base Warranty - Standard Service Heavy Duty</b> 12 months / 100,000 miles / 160,000 km.	0	0
9202800	O	<b>EW: US Basic Vehicle 3 year/100,000 miles,</b> United States only.	750	0
9212601	S	<b>24 Month TruckTech+ Subscription for PACCAR MX</b> Engines w/ OTA Functionality	0	0
9220001	O	<b>Base Warranty: Emissions</b> 5YR/100K MI - EPA Engine (Does not include CARB Clean Idle sticker)	0	0
<b>Miscellaneous</b>				
9409852	O	<b>GHG Secondary Manufacturer: Does Not Apply</b>	0	0

Price Level: January 1, 2022

100% Complete

Date: August 02, 2022

Deal:

Quote Number: QUO-886811-B0R6M7

Printed On: 8/2/2022 9:19:26 AM



Sales Code	Std/Opt	Description	\$ List	Weight
9490003	O	<b>Additional lead time required for off highway &amp; /or specialty component truck.</b>	0	0
9490206	O	<b>Warning triangle reflector kit: Shipped loose.</b> Kit consists of 3 triangles in plastic carrying case. Not floor mounted.	48	4
9490406	O	<b>One 5 lb. dry chemical type fire extinguisher</b> mounted outboard of rider seat. Class ABC.	145	11
9491659	S	<b>VMUX Architecture</b>	0	0

**Promotions**

**Paint**

9700000	O	<b>Paint color number(s).</b>  N9702 A - L0225 WHITE N9720 FRAME N0001 BLACK	0	0
9943004	O	<b>Bumper Unpainted</b>	0	0
9943048	O	<b>Day Cab Bulk Paint</b>	0	0
9943050	O	<b>Day Cab Standard Paint</b>	0	0
9944820	S	<b>1 - Color Paint - Day Cab</b> Color will be White if no other color is specified.	0	0
9965510	S	<b>Base coat/clear coat.</b> The Kenworth Color Selector contains additional instructions, as well as information on Kenworth paint guidelines and surface finish applications. Kenworth is standard with Dupont Imron Elite paint.	0	0

**Order Comments**

<b>Total List Price (W/O Freight &amp; Warranty &amp; Surcharges )</b>	\$277,200
Marketing and Service Support Fee	\$940
Prepaid Freight	\$2,825
<b>Total Surcharge/Options Not Subject To Discount</b>	\$750
<b>Total Weight</b>	20,307

**Prices and Specifications Subject to Change Without Notice.**

Unpublished options may require review/approval.  
Dimensional and performance data for unpublished options may vary from that displayed in CRM.

Price Level: January 1, 2022

100% Complete

Date: August 02, 2022

Deal:

Quote Number: QUO-886811-B0R6M7

Printed On: 8/2/2022 9:19:26 AM





**PRICING DISCLAIMER**

*While we make every effort to maintain the web site to preserve pricing accuracy, prices are subject to change without notice. Although the information in this price list is presented in good faith and believed to be correct at the time of printing, we make no representations or warranties as to the completeness or accuracy of this information. We reserve the right to change, delete or otherwise modify the pricing information which is represented herein without any prior notice. We carefully check pricing specifications, but occasionally errors can occur, therefore we reserve the right to change such prices without notice. We disclaim all liability for any errors or omissions in the materials. In no event will we be responsible for any damages of any nature whatsoever from the reliance upon information from these materials. Please check your order prebills to confirm your pricing information*



**Shipping Destinations**

**Intermediate Destination:**

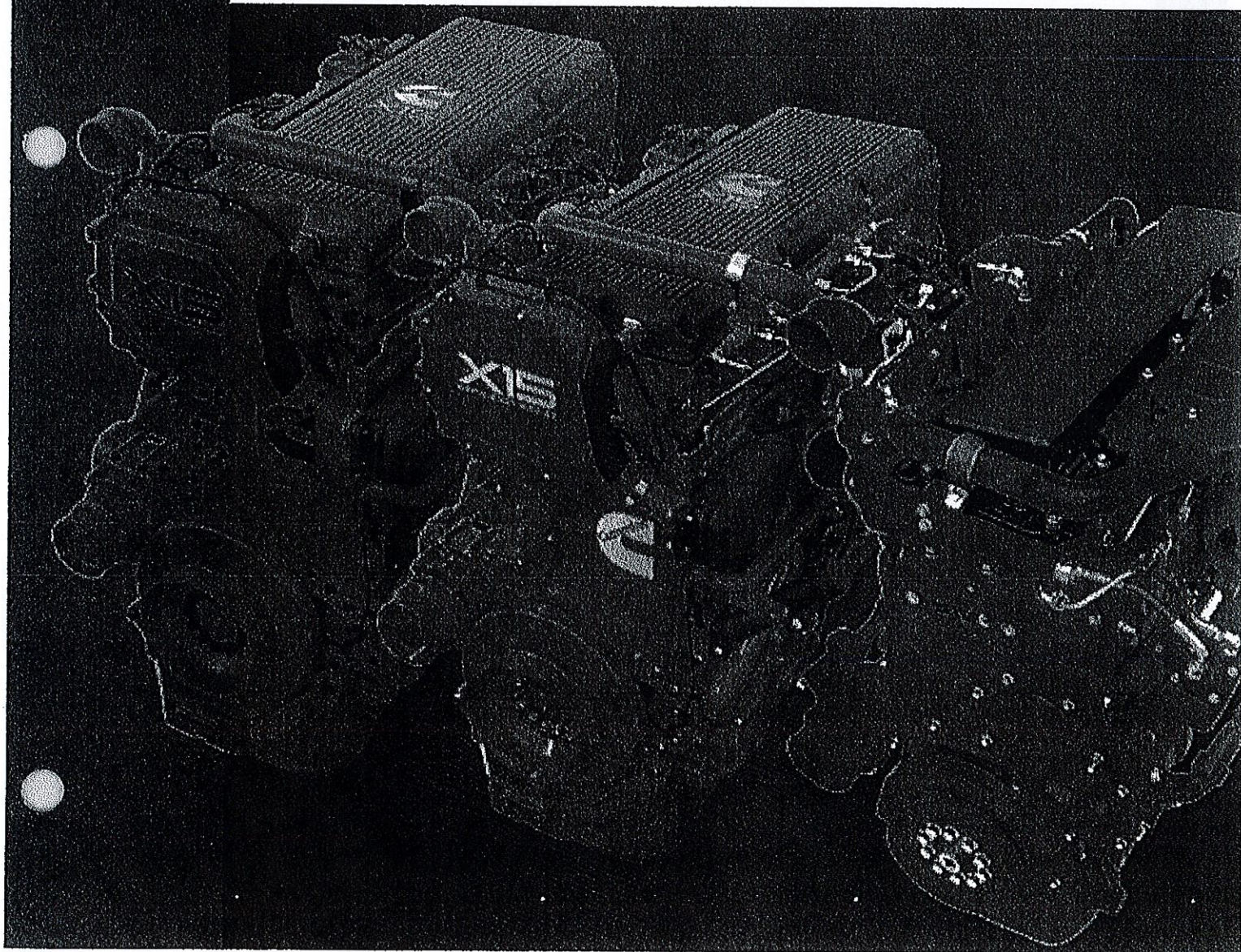
Final Destinations	Quantity
--------------------	----------





# Every™ Coverage.

North American Truck Coverages  
For 2017 X15™ And ISX12 Engines.





# North American Heavy-Duty Truck Coverages.

Cummins Heavy-Duty Base Engine Warranty coverage for the X15 Efficiency Series, X15 Performance Series and ISX12 is better and more comprehensive than ever.

From the block casting to the injectors, virtually everything is covered for 2 years/250,000 miles (402,336 km), whichever comes first. That includes the aftertreatment system.

Plus, we continue to offer a variety of comprehensive extended coverage plans on all Cummins Heavy-Duty engines, for added security. These protection plans provide financial peace of mind, insuring you against unforeseen expenses for years to come. And they can be included in the financing of your new truck for just dollars a day.

Cummins Extended Coverage plans are honored at all authorized Cummins service locations, and backed by Cummins Care. No matter where your business takes you, you've always got a Cummins-authorized service facility nearby, with over 3,500 locations in North America. So you can be assured that every contingency is covered.

## X15 And ISX12 Base Warranty.

There's no greater assurance of quality. A product's warranty is ironclad proof that you can take to the bank, especially when it's a 2-year/250,000-mile (402,336 km) warranty on a Cummins Heavy-Duty X15 or ISX12 engine. Virtually everything is included in this standard warranty – 100 percent parts and labor, travel or towing – all with no deductible:

- 100 percent parts and labor on warrantable failures\*
- Travel or towing when an engine is disabled by a warrantable failure
- Includes aftertreatment

\*Warrantable failures are those due to defects in Cummins material or factory workmanship. Refer to legal bulletins for specific details.

## X15 And ISX12 Extended Coverage Plans.

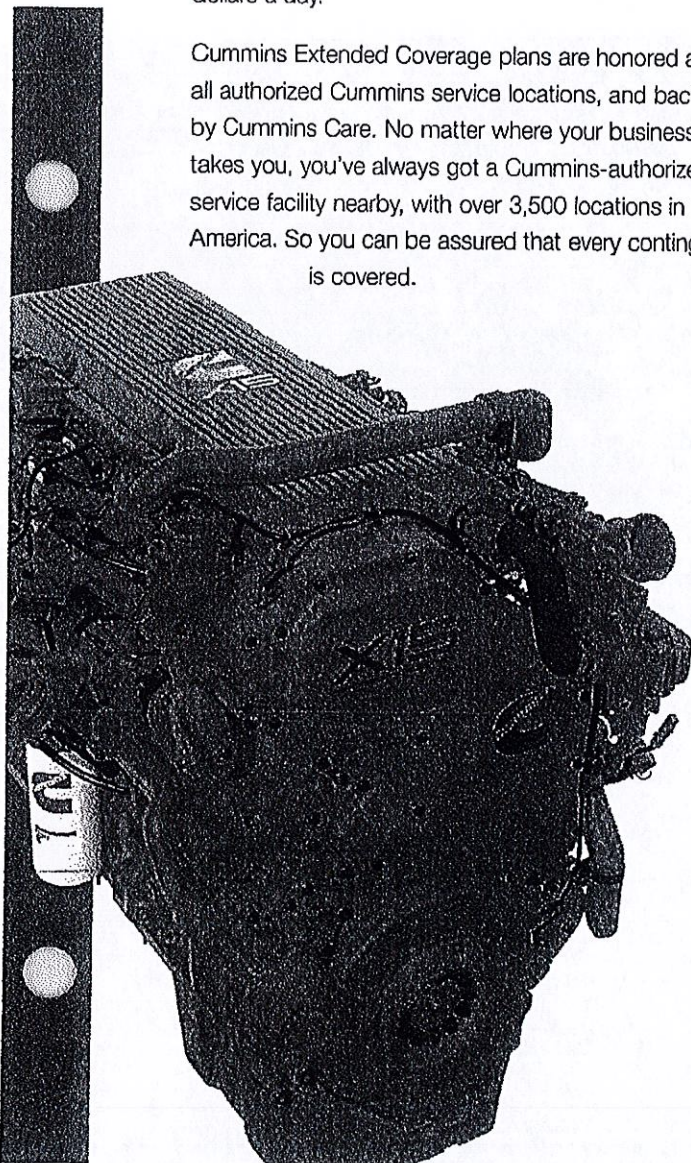
### Protection Plan 1

You can plan your maintenance and repair budgets with confidence when you've got extended coverage for your Heavy-Duty engines. Protection Plan 1 is our most comprehensive package, including the turbocharger, water pump, fuel injectors, air compressor and fuel pump for a variety of year and mileage options ranging from 3 to 5 years and 100,000 to 500,000 miles (160,934-804,672 km) for the X15 Performance Series and ISX12, and from 3 to 6 years and 100,000 to 600,000 miles (160,934-965,606 km) for the X15 Efficiency Series. Mileage range may vary by engine and length of coverage. Contact your local distributor or dealer for duration details to choose the plan that best meets your equipment trade cycle and financial goals.

Items covered under Protection Plan 1 include:

- Internal components and major engine systems, including the turbocharger, water pump and fuel injectors\* and – new for EPA/GHG 2017 – the flywheel, wiring harnesses, front gear housing and thermostat
- Registered parts and labor on covered failures
- Travel or towing when an engine is disabled by a warrantable failure is covered when you purchase Plan 1 coverage with the travel option

\*Does not include hydrocarbon doser injector.





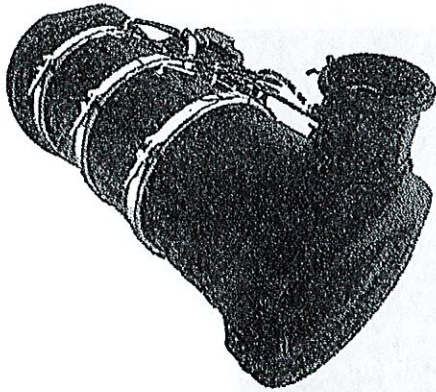
## Protection Plan 2

Provides you with coverage against major repair expenses down the road, no matter where those roads take you. Options range from 3 to 7 years and 250,000 to 500,000 miles (402,336-804,672 km). Mileage range options may vary by engine and length of coverage. Contact your local distributor for details on your specific engine.

Items covered under Protection Plan 2 include:

- Internal components and major engine systems, including the water pump, which is new for EPA/GHG 2017
- Registered parts and labor on covered failures
- Travel or towing when an engine is disabled by a warrantable failure is covered when you purchase Plan 2 coverage with the travel option

## Aftertreatment Extended Coverage\*



Extended coverage is also available for your Single Module™ or Cummins Aftertreatment System. Options range from 3 to 5 years and 100,000 to 500,000 miles (160,934-804,672 km). Mileage range options may vary by engine and length of coverage. Contact your local distributor for details on your specific engine.

The coverage includes Cummins-supplied aftertreatment components, including:

- Diesel Oxidation Catalyst (DOC), Diesel Particulate Filter (DPF) and SCR assemblies
- Hydrocarbon dosing system
- Diesel Exhaust Fluid (DEF) dosing system
- Ammonia sensor

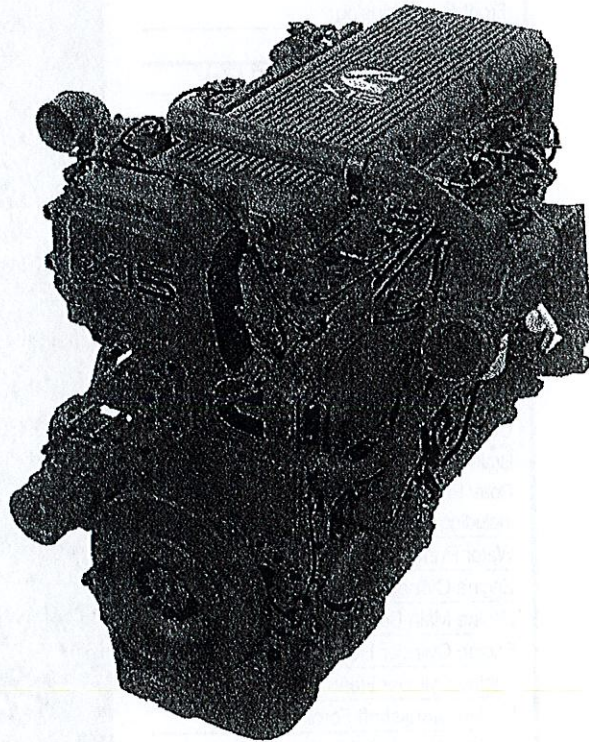
\*Protection Plan 1 EPA 2017 of equal duration is required prior to the purchase of the Aftertreatment Extended Coverage.

## Major Components Coverage.

Cummins Major Components Coverage is the most important travel insurance you can buy, as it protects you against unexpected expenses stemming from issues involving major repairs. Advance planning with Major Components Coverage provides additional peace of mind, with options ranging from 5 to 7 years and 500,000 to 700,000 miles (804,672-1,126,541 km). Mileage range options may vary by engine and length of coverage. Contact your local distributor for details on your specific engine.

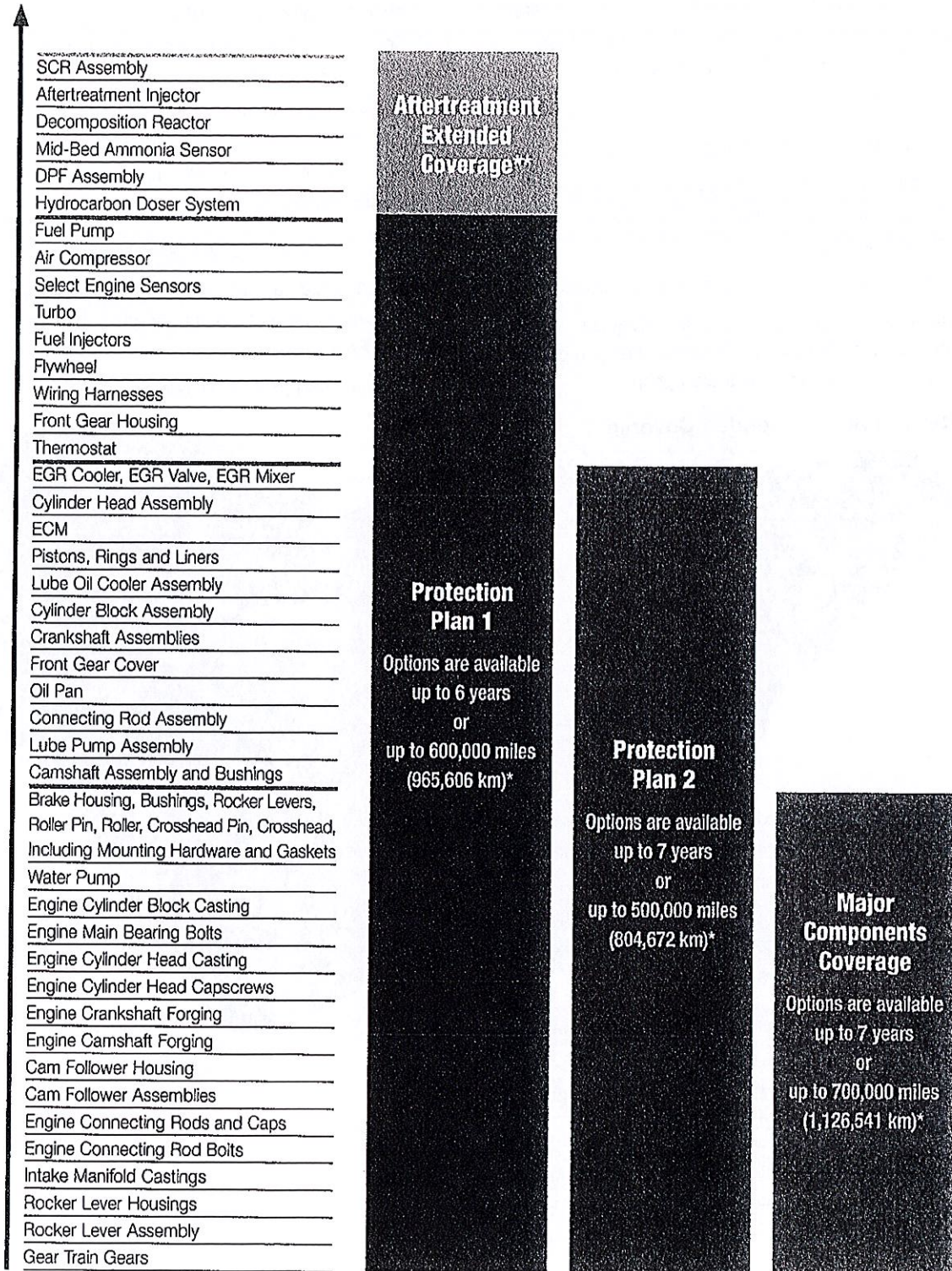
Major Components Coverage includes:

- Registered parts and labor on covered failures, including the water pump, which is new for EPA/GHG 2017
- Major castings and forgings





## 2017 X15 And ISX12 Extended Coverage Terms\*



\*Terms and conditions are subject to change. Mileage range options may vary by engine and length of coverage.

\*\*Protection Plan 1 EPA 2017 of equal duration is required prior to the purchase of the Aftertreatment Extended Coverage.





### **Leave Every Detail To Us.**

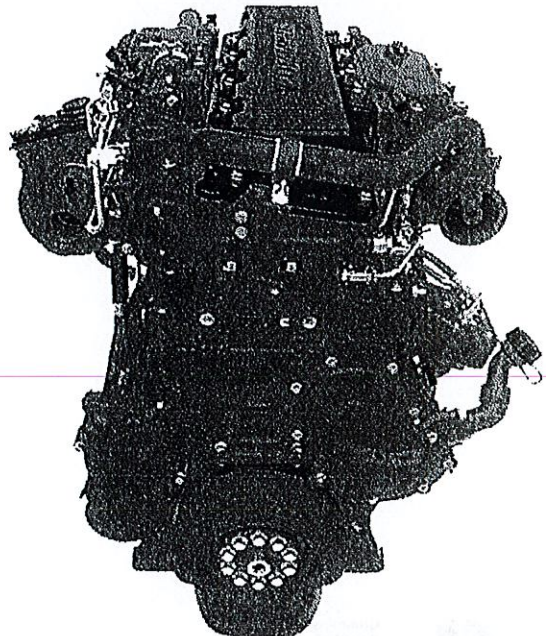
For complete coverage details, including pricing, contact your local Cummins distributor or OEM dealer.

Ordering Cummins Extended Coverage is easy. Your local Cummins distributor or dealer can handle it for you when you buy your new X15- or ISX12-powered truck, and include it in your financing, or you can buy it separately later on for up to 18 months after your engine purchase\*.

If you experience a service need during the coverage period, call Cummins Care toll-free at 1-800-CUMMINS™ (1-800-286-6467). Our Cummins Care representatives are standing by, every hour of every day, and they will check with nearby authorized Cummins distributors and dealers to locate a facility with an available technician and the right diagnostic tools to handle your equipment repair. Your Cummins representative will help get you to the nearest available location – with 3,500 authorized locations, there's sure to be one close by.

Simply show the servicing distributor/dealer your Extended Coverage certificate, and he or she will handle all the necessary paperwork and repairs to get you back on the road as quickly as possible.

\*After 12 months, a small administrative fee may be applied.





Cummins Inc.  
Box 3005  
Columbus, IN 47202-3005  
U.S.A.

Phone: 1-800-CUMMINS™ (1-800-286-6467)  
Internet: cumminsengines.com

Twitter.com/CumminsEngines  
YouTube.com/CumminsEngines

Bulletin 5410688 Printed in U.S.A. 1/17  
©2017 Cummins Inc.



### Vehicle Warranty Quick Reference Guide – Class 8 Standard Service only

This is a Quick Reference Guide ONLY – Uncontrolled Document for Information Only  
This is a *limited listing* of the components and/or items used in the assembly of a Kenworth truck and their respective level of warranty coverage. This list is *NOT* all inclusive. Refer to the Kenworth Warranty Agreement for specific details on the terms, conditions and limitations of said Warranty Agreement

Items in RED are excluded from all extended coverage  
N/A/C Components

#### Kenworth Proprietary Rear Suspension Components

Updated 3/12/18

BASIC VEHICLE WARRANTY			
12 Months or 100,000 Miles / 100,000 Kilometers whichever occurs first / 100% Parts and Labor			
Air Cleaner System (including Filter Element) Accumulator (maintenance item) Air Manifold Air Receiver Air Service Valve Air System Air Compressor (Banded) Air Dryer & Purge Valve Air Governor Air Tank & Drain Valve Alternator Antenna Auxiliary Transmission Battery (PACCAR) Battery (KIMB) Battery Box Assembly Battery Hold Downs Brake Chamber Camshaft Slack Adjusters Spider Drums / Discs ABS Sensors Bumper (includes Aerodynamic Type) Cab Charge Air Cooler (CAC) Hose & Clamps Control Brackets	Clamps, Turbocharger Air Inlet Clock (analog / digital) Clutch, Clutch Linkage Collision Avoidance System Control Cables Converter Cooling Module (Rad/CAC/Sensors/Washer Pump) Cruise Control Component Deck Plate Deck Plate Lamp DEF Heater Control Relay DEF Heater Coolant Control Valve DEF Heated Lines DEF Heating Elements DEF Heating Filings on Supply Module DEF Lamp DEF Tank Door Latch, Lock and Hinge Door Pad and Bolt Trim Driveline, U-Joint and Center Bearing Electrical Power Distribution Box Electrical Printed Circuit & Harness (excludes harness) Engine Related Components Engine Brake (PAC/Brake Only) Exhaust & Tube Fan, Fan Clutch & Sending Unit Fan Shroud Headlight Manufacturer Messaging Products Engine Supports (Mounts / Legs) Shutdown System Exhaust Manifold Exhaust piping, clamps, gaskets Flaking Fuel Tank Latch Strap, Cap and Vent Fuel Water Separator and/or Heater Gauge and Sending Unit Heat Shield Hood Opening Assist: Spring & Hook / Strut / Shock Horn – Air or Electric Hose and Filing (Rubbed or Loose) Hub Assembly & Bearing (Excludes Wheel Seals) Hub Caps	Hubmeter Ignition Timer Instruments Inverter Kenworth Mile Management System (KIMS) LIFTAP/Pusher Aids LIFTAP/Pusher Suspension Light Fixtures - All Types (Excludes Bulb) Mirror Mud Flap Bracket (Excludes Mud Flap) Muffler Muffler Clamps Muffler Standpipe Navigation System - NavPlus Oil Coolers O-Rings Plating (including Chrome) Power Steering Box Assembly Power Steering Pump Power Steering Reservoir Power Take Off Quarter Fender (Rear) Radiator (including Header Gaskets) Radiator Cap (TE855) Radiator Mounting Brackets (TE855) Radiator Mounting Bushings (TE855) Radiator Tie Rods Radio/CD (TE855) Roof Finishing Seal Beads Seal Structure Shift Controls Shock Absorbers (TE855) Shock Absorber Sleeper Box, Shelves & Cabinets Smashwheel Spacers Starlers Steering Shaft and U-Joint Drag Link Hook Mounting Bracket Pitman Arm Steering Wheel and Column Strap Supplemental Restraint System (SRS Airbag)	Suspension Shock Wheel End Height Control Valve Height Control Valve Bracket Height Control Valve Linkage Spring, Air Spring As Spring Bracket Spring Leaf Spring Pin Spring Washer Spring Hanger & Tray Tire Swing, Turntable & Lockdown Tires & Wheel Seals Suspension Bushings (TE855) Cab Height Control Valve Height Control Valve Bracket Height Control Valve Linkage Spring, Air Sleeper Height Control Valve Height Control Valve Bracket Height Control Valve Linkage Spring, Air Switch Thrust Linkage, Pad, and Cable Tire Mechanism (includes Pump) Transfer Case (F-Body) Tailcoilage Piping, Clamps & Gaskets to Inlet of SCR Upholstery Valve, Air Vent - Fresh Air Viper (Outside and Inside) Water Leak Weather Stripping Window Deflector Fan Window Lift (includes Power Lift) Window Regulator Windshield Washer Wiper Arm (Excludes Wiper Blade) Wiper Motor and Control Valve Wiring Harness and Connectors *Mounting brackets & bolts for above items**
HVAC BASIC VEHICLE WARRANTY			
12 Months Unlimited miles or kilometers / 100% Parts and Labor		HVAC System	
MAJOR COMPONENTS			
36 Months or 300,000 Miles/480,000 Kilometers whichever occurs first / 100% Parts and Labor			
Aides, Driving & Non-Driving, On-Highway with a capacity of 40,000 lbs. or less (including Aids Inlet and Output Seals) Aids Housing Gaskets, Two Speed Aids EXCLUSIONS: Aids Shaft Flange Gaskets, King Pin Bushings, Brake Drums, Brake Shoes, Filters, Hub Assemblies, Hub Caps and Gaskets, Wheel Bearings and Wheel Seals		Brakes - Brackets, Cam Shafts, Spiders, and Slack Adjusters (Excludes Drums & Discs) Cab/Sleeper Structure & Side Extenders, Hood, Split Fender Hook-Bolt (Cab and sleeper only) Transmitters - Eaton Auto Shift and Manual Transmission Shift Controls & Oil Coolers	
MAJOR COMPONENTS - PACCAR POWERTRAIN			
<b>Component</b> Rear Aids 40K - Line Haul Rear Aids 40K - Regional Haul & Pickup & Delivery Front Aids - All Applications (incl. Severe Service) Transmission - All Applications Clutch - All Applications	<b>Duration</b> 80 Months / 750,000 Miles (1,200,000 Kilometers) 24 Months / Unlimited Miles & Kilometers 80 Months / 750,000 Miles (1,200,000 Kilometers) 60 Months / 750,000 Miles (1,200,000 Kilometers) 36 Months / 750,000 Miles (1,200,000 Kilometers)		
EXCLUSIONS: Aids Shaft Flange Gaskets, King Pin Bushings, Brake Drums, Brake Shoes, Filters, Hub Assemblies, Hub Caps and Gaskets, Wheel Bearings and Wheel Seals			
FRAME SIDE RAILS, CROSSMEMBERS, GUSSETS AND CAB CORROSION			
60 Months or 500,000 Miles/800,000 Kilometers whichever occurs first 100% Parts and Labor		Cab corrosion warranty applies to perforation - an actual hole in a cab panel due to corrosion Warranty does not apply to corrosion caused by damage to a cab panel or fresh paint	
OTHER COMPONENT WARRANTY			
12 Months or 50,000 Miles/80,000 Kilometers whichever occurs first 100% Parts and Labor		Aids Shaft Flange Gaskets Hub Cap Gaskets Wheel Seals	
CAB PAINT		FRAME PAINT (OTHER THAN BLACK)	
12 Months or 100,000 Miles/160,000 Kilometers whichever occurs first 100% Parts and Labor Excludes Paint Chip and/or Fade		6 Months or 50,000 Miles/80,000 Kilometers whichever shall occur first 100% Parts and Labor Excludes Paint Chip and/or Fade Excluded Vehicle Applications: Logger, Mixer, Dump, Refuse, Offroad & Construction	
FRAME PAINT (BLACK ONLY)		FRAME PAINT	
12 Months or 100,000 Miles/160,000 Kilometers whichever occurs first 100% Parts and Labor Excludes Paint Chip and/or Fade Excluded Vehicle Applications: Logger, Mixer, Dump, Refuse, Offroad & Construction		3 Months or 25,000 Miles/40,000 Kilometers whichever shall occur first 100% Parts and Labor Excluded Vehicle Applications: Logger, Mixer, Dump, Refuse, Offroad & Construction applications	
BREAK-IN ITEMS			
90 days or 25,000 Miles/40,000 Kilometers whichever occurs first			
NON-WARRANTABLE COMPONENTS		NON-WARRANTABLE FUNCTIONS OR ACTS	
(may have supplier Extended) Fits with Engine Manufacturer Add-on Aerodynamic Devices (dealer installed) Air Compressor (Engine Manufacturer) Air Slat Anti-Rattle Solutions Automatic Transmission (except Fuller/Case) Brake Linings / Shoes / Pads Engine (See Engine Coverage) Engine Accessories Fifth Wheel Filters for Fuel, Oil and Water Fire Extinguisher Fuel Lubricant Malfunction Non-Original Equipment Pintle Hook / Tow Pin Printers for Fuel, Primer and Water Refrigerator Radiograph Television Set, VCR, DVD player Tires Wheel Mounting / Balancing Wheels / Hubs Winter Front and Bug Screen	Kenworth assumes no responsibility for wear and/or deterioration of parts or changes in adjustment as a result of normal service.  Examples: Aluminum, Chrome or Stainless Steel: Aids and/or Wheel Alignment Brake Adjustment Brake Drum / Disc Brake Linings / Shoes / Pads Bushings (TE855) Chain Fasteners Discoloration or pitting Mats/Steps Paint and Chip and/or Fade Soft Trim and Upholstery Stainless Steel Discoloration Window and Windshield Glass	Any vehicle on which the odometer has been altered. Any vehicle that has been altered or modified in a manner unauthorized by Kenworth.  Damage due to accidents Dyno testing (without prior regional authorization) Environment Impact Improper operation Improper or insufficient maintenance service Installation of Non-OEM Parts Misuse Negligence Overtime Labor Road Testing Steering Stop Adjustments Storage (including deterioration) Towing or Emergency Road Cuffs (ERC) Transport	<b>ITEMS Covered</b> (First 90 days / 25,000 miles) Bolts Bushes Fuses Hood Adjustment Leveling of Vehicle Reflectors Wiper Blades & Spray Nozzle
This list is <b>NOT</b> all inclusive		This list is <b>NOT</b> all inclusive	
OFF-HIGHWAY/SEVERE SERVICE VEHICLES: 12 Months or 50,000 Miles / 80,000 Kilometers whichever occurs first			
Severe Service Warranty is based on a Kenworth chassis having one of the following: Unimog or off-road registration, all-wheel drive, twin steer axles, all front steer axles rated @ 21,000 lbs. GAWR or greater, single rear drive axles rated @ 28,000 lbs. GAWR or greater, tandem rear axles rated @ 52,000 lbs. GAWR or greater, or 10% or more class C and/or D usage			

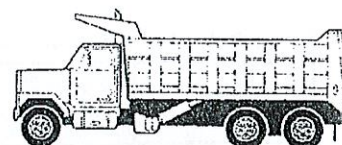
2017 Allison Transmission Coverage Pricing Guide II

Allison B710 SERIES**		Total Coverage (Included in acquisition price of transmission)	Extended Transmission Coverage Pricing (Available for purchase)
Model	Vocation	Years of Coverage (Standard Limited Warranty** + Partnership Coverage)	2 Years
2550 RDS xFE	P&D and Beverage	3+0	\$538
	Refuse Packer	3+0	\$1,045
	Utility and Other	3+0	\$538
	Dump Trucks/Mixers	3+0	\$538
	Agriculture***	3+0	\$538
3000 RDS	P&D and Beverage	2+1	\$468
	Refuse Packer	2+1	\$910
	Utility and Other	2+1	\$468
	Dump Trucks/Mixers	2+1	\$468
	Agriculture***	3+0	\$468
3000 RDS R****	P&D and Beverage	2+1	\$663
	Refuse Packer	2+1	\$1,077
	Utility and Other	2+1	\$663
	Dump Trucks/Mixers	2+1	\$663
	Agriculture***	3+0	\$663
3500 RDS	P&D and Beverage	2+1	\$468
	Refuse Packer	2+1	\$910
	Utility and Other	2+1	\$468
	Dump Trucks/Mixers	2+1	\$468
	Agriculture***	3+0	\$468
3500 RDS R****	P&D and Beverage	2+1	\$578
	Refuse Packer	2+1	\$1,009
	Utility and Other	2+1	\$578
	Dump Trucks/Mixers	2+1	\$578
	Agriculture***	3+0	\$578
4000 RDS	P&D and Beverage	2+1	\$835
	Refuse Packer	2+1	\$1,098
	Utility and Other	2+1	\$835
	Dump Trucks/Mixers	2+1	\$835
	Agriculture***	3+0	\$835
4000 RDS R****	P&D and Beverage	2+1	\$1,109
	Refuse Packer	2+1	\$1,360
	Utility and Other	2+1	\$1,109
	Dump Trucks/Mixers	2+1	\$1,109
	Agriculture***	3+0	\$1,109
4500 RDS	P&D and Beverage	2+1	\$786
	Refuse Packer	2+1	\$1,001
	Utility and Other	2+1	\$786
	Dump Trucks/Mixers	2+1	\$786
	Agriculture***	3+0	\$786
4500 RDS R****	P&D and Beverage	2+1	\$866
	Refuse Packer	2+1	\$1,096
	Utility and Other	2+1	\$866
	Dump Trucks/Mixers	2+1	\$866
	Agriculture***	3+0	\$866
4700 RDS	P&D and Beverage	N/A	N/A
	Refuse Packer	2+1	\$1,517
	Utility and Other	2+1	\$1,580
	Dump Trucks/Mixers	2+1	\$1,212
	Agriculture***	3+0	\$1,212
4700 RDS R****	P&D and Beverage	N/A	N/A
	Refuse Packer	2+1	\$2,150
	Utility and Other	2+1	\$1,828
	Dump Trucks/Mixers	2+1	\$1,828
	Agriculture***	3+0	\$1,828

\*\* Extended Transmission Coverage. Available for purchase through Allison Authorized Distributors and Dealers to increase coverage to a total of five years or seven years.  
 \*\*\* Hour Limitations apply to Standard Limited Warranty. No hour limitations apply to Extended Transmission Coverage.  
 \*\*\*\* Retarder Option.



# Construction



	Trailers w/ Approved Semi-Fluid Lubricant (Note 2)	5 years / 500,000 miles (800,000 km)
<b>Tire Inflation and Monitor System (TIMS)</b>	All Models	3 years / 300,000 miles (480,000 km)
<b>SmartWave Tire Pressure Monitoring System (TPMS)</b>	All Models	3 years / Unlimited Mileage
<b>Tire Pressure Control System (TPCS)</b>	All Models	1 year / Unlimited Mileage
<b>Transmissions</b>	Models: 7, 9, 10 Speeds (Note 1) 1100-1800 lbs. ft. 8600/8700 Series (Model exceptions shown below) [Excludes Fuller UltraShift LST (DM)]	3 years / Unlimited Mileage
	Multispeed: 13, 15, 18, 8LL, MLL, 9ALL (Notes 1, 4) (Excludes Fuller UltraShift LHP)	3 years / Unlimited Mileage
	UltraShift PLUSVCS, VMS, VXP (Note 1)	3 years / Unlimited Mileage
	FS Series, RT-6609A (Notes 5, 8)	2 years / Unlimited Mileage
	Hybrid: EH-8E306A-UPG, EH-8E306A-UP (Notes 1)	3 years / 150,000 miles (240,000 km)
<b>Oil-to-Water Heat Exchangers</b>	All Models (Note 1)	3 years / Unlimited Mileage
<b>Auxiliary Transmission</b>	Models: AT-1202, 2A-92	1 year / Unlimited Mileage
<b>Bendix VORAD Collision Warning System</b>	EVT-200 Series EVT-300 Series (Note 12)	See Bendix Warranty Web Site
	VS-400 Series (Note 12)	See Bendix Warranty Web Site
	Retrofit Units (All Series) (Note 12)	See Bendix Warranty Web Site

**Note 1:** All transmission models require the use of a Roadranger approved lubricant. Automated transmissions and transmissions with Purchased Extended Protection Plans must use Roadranger Synthetic Lubricant meeting Eaton PS 164 Rev7 specification (Refer to Lubrication Manual, TCMT0021.) All transmission and clutch models must meet and have Eaton Engineering Application Approval prior to sale to qualify for any warranty coverage, and then be operated in the approved applications. Those that do not will void their warranty. No blanket approvals are available at this time for UltraShift PLUS models and Hybrid Systems.

**Note 2:** Requires Roadranger approved OEM installation procedures and lubes.

**Note 3:** With Approved Synthetic Lube, Without Approved Synthetic Lube, Warranty = 3 years/300,000 miles (480,000 km).

**Note 4:** Refer to "Extended Protection Plan Matrix" on [www.roadranger.com](http://www.roadranger.com)

**Note 5:** 1 year/Unlimited for Snow Plows in FS Series.

**Note 7:** Driver controlled wheel differential lock options carry the same warranty as single reduction models.

**Note 8:** FS Series synchronizer wear coverage (synchronizers with Eaton Friction Material) is only available for transmissions that use Eaton approved synthetic lubricant in conjunction with either a Solo Adjustment Free or a 365 MM Clutch (Transmission Robust Package). Without stated package requirements, synchronizer wear is not covered.

**Note 11:** Use of non-genuine Dana Axle Housing Breather will void warranty for pinion, input, and output seals.

**Note 12:** Please refer to the Bendix web site (<http://www.bendix.com/en-us/service/Pages/Warranty.aspx>) for the most current policy in effect. Bendix Commercial Vehicle Systems LLC and Bendix Spicer Foundation Brake LLC reserves the right to make policy changes at anytime. The Bendix SmartWave and VORAD trademarks are not owned or owned by Bendix Commercial Vehicle Systems LLC.



Heavy-Duty Manual Transmission

Vocation	Approved Models	Transmission Torque	Standard Warranty (Yr/Mi:000) <sup>1,2</sup>	Additional Coverage Years/Miles (000)					
				Option 1	Price USD	Option 2	Price USD	Option 3	Price USD
Linehaul	9, 10	1750 lbs.ft. and below	5/750 (1200km)	N/A	N/A	N/A	N/A	N/A	N/A
		1850 lbs.ft. and above	5/500 (800km)	0/100 (160km)	\$200	0/250 (400km)	\$400	N/A	N/A
	Convertible (9-Speed) <sup>1</sup>	All	5/500 (800km)	0/100 (160km)	\$200	0/250 (400km)	\$400	N/A	N/A
	13, 15, 18, 9ALL, 8LL, Convertible (13-Sp. prior to 3/300)	1750 lbs.ft. and below	3/300 (480km)	1/100 (160km)	\$255	2/200 (320km)	\$425	2/450 (720km)	\$575
		1850 lbs.ft. and above			\$435		\$725		
	Convertible 13-Sp 3/300 to 5/500	1750 lbs.ft. and below	Note 1	1/100 (160km)	\$385	2/200 (320km)	\$560	N/A	N/A
1850 lbs.ft. and above		\$545			\$790				
Standard Duty Construction, Pick up & Delivery, Transit Coach, School Bus, Recreational Vehicle, Fire Service, Rescue Vehicle	All	1750 lbs.ft. and below	3/U	1/U	2/U	\$385	N/A	N/A	
		1850 lbs.ft. and above				\$655			\$1090
Severe Duty Off-Highway, Agriculture, Heavy Haul, Logging, Mining, Oil Field, Refuse, Yard Tractor, InterCity Bus	All	1750 lbs.ft. and below	2/U	1/U	2/U	\$510	3/U	\$1400	
		1850 lbs.ft. and above				\$870		\$1450	\$2400

Notes: 1 "Convertible" models 5/500 coverage when operated only as a 9-Speed. Note: Additional 1/100 coverage after conversion on 'Convertibles' with purchase of appropriate conversion kit. Additional coverage available for purchase. No late registration penalties. Maximum coverage 6/600 for converted units.  
2 "U" denotes "Unlimited" mileage.

AutoShift<sup>®</sup> Transmission

Vocation	Approved Models	Transmission Torque	Standard Warranty (Yr/Mi:000) <sup>1,2</sup>	Additional Coverage Years/Miles (000)					
				Option 1	Price USD	Option 2	Price USD	Option 3	Price USD
Linehaul	10-Speed	1750 lbs.ft. and below	5/750 (1200km)	N/A	N/A	N/A	N/A	N/A	N/A
		1850 lbs.ft. and above	5/500 (800km)	0/100 (160km)	\$350	0/250 (400km)	\$550	N/A	N/A
	18-Speed	1750 lbs.ft. and below	3/300 (480km)	1/100 (160km)	\$470	2/200 (320km)	\$650	N/A	N/A
		1850 lbs.ft. and above			\$650		\$950		
Standard Duty Construction, Pick up & Delivery, Transit Coach, School Bus, Recreational Vehicle, Fire Service, Rescue Vehicle	All	1750 lbs.ft. and below	3/U	1/U	2/U	\$705	N/A	N/A	
		1850 lbs.ft. and above				\$975			\$1425
Severe Duty Off-Highway, Agriculture, Heavy Haul, Logging, Mining, Oil Field, Refuse, Yard Tractor, InterCity Bus	All	1750 lbs.ft. and below	2/U	1/U	2/U	\$940	3/U	\$2000	
		1850 lbs.ft. and above				\$1300		\$1900	\$3000

Notes: 1 "U" denotes "Unlimited" mileage.

UltraShift<sup>®</sup> Transmission

Vocation	Approved Models	Transmission Torque	Standard Warranty (Yr/Mi:000) <sup>1,2</sup>	Additional Coverage Years/Miles (000)					
				Option 1	Price USD	Option 2	Price USD	Option 3	Price USD
Linehaul	LST	1750 lbs.ft. and below	5/750 (1200km)	N/A	N/A	N/A	N/A	N/A	N/A
		1850 lbs.ft. and above	5/500 (800km)	0/100 (160km)	\$350	0/250 (400km)	\$550	N/A	N/A
	LHP, LEP	All	5/500 (800km)	0/100 (160km)	\$400	0/250 (400km)	\$600	N/A	N/A
Standard Duty Recreational Vehicle	LST, LHP	All	5/U	N/A	N/A	N/A	N/A	N/A	N/A

Notes: 1 Coverage does not include DM Clutch model. Must be purchased separately. See clutch matrix. 2 "U" denotes "Unlimited" mileage.

Pricing applies for Protection Plans sold in the first year in service. An additional premium is required for Protection Plans sold within the 2nd and 3rd year of vehicle service. Plans must be purchased before the end of the standard warranty period. Premium Pricing: 2nd year \$100 USD; 3rd year \$300 USD. Canadian orders will be invoiced in CAD based on prevailing exchange rate. For the most current CAD pricing, go to [www.roadrangerwarranty.com](http://www.roadrangerwarranty.com).

- \* All coverage subject to meeting Eaton application requirements. All extended coverage requires use of Roadranger or Roadranger "Approved" lubricants.
- \*\* Externally mounted heat exchangers coverage limited to standard warranty or 3 years/300,000 miles (480,000 km) maximum. Extended protection does not apply.
- \*\*\* Coverage/pricing valid for US/Canada only.



Heavy-Duty UltraShift® PLUS V Series Transmission and Clutch

Vocation	Approved Models	Transmission Torque	Component	Standard Warranty (Yr/Mi 000) <sup>3</sup>	Additional Coverage Years/Miles (000)					
					Option 1	Price USD	Option 2	Price USD	Option 3	Price USD
Linehaul	VAS	1750 lbs.ft. and below	Transmission	5/750 (1200km)	N/A	N/A	N/A	N/A	N/A	N/A
		1850 lbs.ft. and above	Transmission							
		All	Clutch	3/350 (563km)	1/100 (160km)	\$300	2/150 (401km)	\$500		
	VCS/VHP/VMS/VXP	1750 lbs.ft. and below	Transmission	3/300 (480km)	1/100 (160km)	\$525	2/200 (320km)	\$750		
		1850 lbs.ft. and above	Transmission			\$700		\$1000		
		All	Clutch	3/350 (563km)	\$300	2/150 (241km)	\$500			
Standard Duty Construction, Pick up & Delivery <sup>1</sup> , Transit Coach, Recreational Vehicle, Fire Service, Rescue Vehicle	VAS <sup>1</sup> /VCS/VHP/VMS/VXP	1750 lbs.ft. and below	Transmission	3/U	1/U	\$700	2/U	\$1000	N/A	N/A
		1850 lbs.ft. and above	Transmission			\$950		\$1200		
		All	Clutch			\$350		\$625		
Severe Duty Off-Highway, Agriculture, Heavy Haul <sup>2</sup> , Logging, Mining, Oil Field, Refuse	VAS/VCS/VHP/VMS/VXP	1750 lbs.ft. and below	Transmission	2/U	1/U	\$950	2/U	\$1300	3/U	\$1800
		1850 lbs.ft. and above	Transmission			\$1250		\$1750		\$2450
		All	Clutch	\$425	\$750	\$1200				

Notes: 1 VAS Pick up & Delivery standard warranty is 5 years/750,000 miles. Extended warranty not available. 2 Heavyhaul application available for VXP and VHP models only. 3 "U" denotes "Unlimited" mileage.

Heavy-Duty UltraShift® PLUS M Series Transmission and Clutch

Vocation	Approved Models	Transmission Torque	Component	Standard Warranty (Yr/Mi 000) <sup>3</sup>	Additional Coverage Years/Miles (000)					
					Option 1	Price USD	Option 2	Price USD	Option 3	Price USD
Linehaul	MHP/MXP	1750 lbs.ft. and below	Transmission	5/500 (800km)	0/100 (160km)	\$350	0/250 (400km)	\$600	N/A	N/A
		1850 lbs.ft. and above	Transmission			\$450		\$750		
		All	Clutch	3/350 (800km)	1/100 (160km)	\$300	2/150 (241km)	\$500		
Standard Duty Construction <sup>1</sup> , Pick up & Delivery, Transit Coach, Recreational Vehicle	MHP/MXP	1750 lbs.ft. and below	Transmission	3/U	1/U	\$700	2/U	\$1000	N/A	N/A
		1850 lbs.ft. and above	Transmission			\$950		\$1200		
		All	Clutch			\$350		\$625		
Severe Duty Off-Highway, Agriculture, Heavy Haul <sup>2</sup> , Logging, Mining, Oil Field, Refuse	MHP/MXP	1750 lbs.ft. and below	Transmission	2/U	1/U	\$950	2/U	\$1300	3/U	\$1800
		1850 lbs.ft. and above	Transmission			\$1250		\$1750		\$2450
		All	Clutch	\$425	\$750	\$1200				

Notes: 1 Construction application not available for MHP models. 2 Only Heavyhaul application available for MHP models. 3 "U" denotes "Unlimited" mileage.

Heavy-Duty UltraShift® PLUS L Series Transmission and Clutch

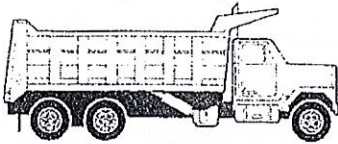
Vocation	Approved Models	Transmission Torque	Component	Standard Warranty (Yr/Mi 000) <sup>1</sup>	Additional Coverage Years/Miles (000)			
					Option 1	Price USD	Option 2	Price USD
Linehaul	LAS	1750 lbs.ft. and below	Transmission	5/750 (1200km)	N/A	N/A	N/A	N/A
		1850 lbs.ft. and above	Transmission					
		All	Clutch	3/350 (800km)	1/100 (160km)	\$300	2/150 (241km)	\$500
Standard Duty Pick up & Delivery	LAS	1750 lbs.ft. and below	Transmission	5/750 (1200km)	N/A	N/A	N/A	N/A
		1850 lbs.ft. and above	Transmission					
		All	Clutch	3/350 (800km)	1/100 (160km)	\$300	2/150 (241km)	\$500
Standard Duty Recreational Vehicle, Transit Coach	LAS	1750 lbs.ft. and below	Transmission	3/U	1/U	\$700	2/U	\$1000
		1850 lbs.ft. and above	Transmission			\$950		\$1200
		All	Clutch	3/350 (800km)	1/100 (160km)	\$300	2/150 (241km)	\$500

Notes: 1 "U" denotes "Unlimited" mileage.

Pricing applies for Protection Plans sold in the first year in service. An additional premium is required for Protection Plans sold within the 2nd and 3rd year of vehicle service. Plans must be purchased before the end of the standard warranty period. Premium Pricing: 2nd year \$100 USD; 3rd year \$300 USD. Canadian orders will be invoiced in CAD based on prevailing exchange rate. For the most current CAD pricing, go to [www.roadrangerwarranty.com](http://www.roadrangerwarranty.com).

- \* All coverage subject to meeting Eaton application requirements. All extended coverage requires use of Roadranger or Roadranger "Approved" lubricants.
- \*\* Externally mounted heat exchangers coverage limited to standard warranty or 3 years/300,000 miles (480,000 km) maximum. Extended protection does not apply.
- \*\*\* Coverage/pricing valid for US/Canada only.





## Construction/Agriculture

### Vocational Description

- Movement of material to, from, and around a job site
- 90% of loaded operation on prepared road surfaces of concrete, asphalt, gravel, crushed rock or hard packed dirt and up to 10% of loaded operation into sandy or muddy work areas
- Liftable tag and pusher axles are often used to increase legal load capacity on highway
- Vehicles typically operate a high percentage of time off-highway making a large number of stops and starts
- Straight trucks as well as trucks with equipment trailers are considered construction vehicles. Tractor/semi-trailers and trucks pulling material trailers or dump body pups will be considered mining applications and should be reviewed based on guidelines established for that vocation

### Typical Vehicle Types

Asphalt Truck	End/Side Dump Truck	Landscaping Truck	Stake Body Truck
Block/Brick Truck	Feed Lot Truck	Milk Tanker Truck	Snowplow/Snowblower
Bucket Truck	Flatbed Truck	Mixer Truck	Tanker Truck
Concrete Pumper	Grain Truck	Roll-Off Container Truck	Transit Mixer
Crane/Cherry Picker	Hook Lift Truck	Silage Truck	Utility Truck

### Service Definitions (vocational description applies to all operations)

- Operation 1 GVW/GCW-straight trucks and straight trucks with equipment trailers. Grades up to 12%.

### Warranty Coverage for Vehicles Meeting Vocation Definitions and Application Guidelines

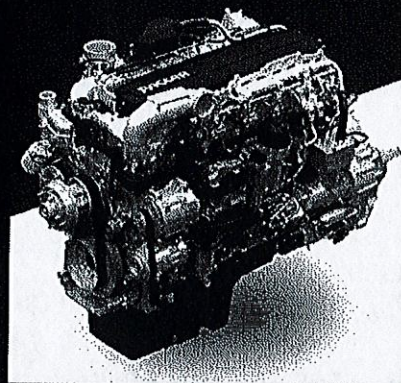
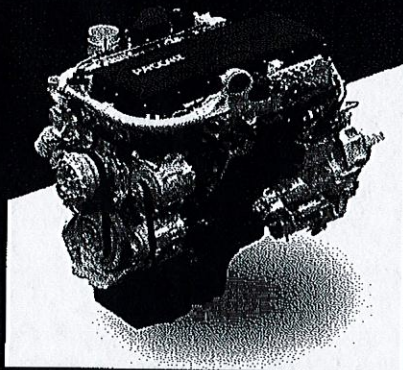
Component	Axle Model (Family)	Standard Warranty
Single Drive Axle	S110, S111, S130, S140, 17060S, 19060S, 21060S, 21065T, 22065T, 23083T, 26082T, S23-590, S26-590, S30-590	2 Years / Unlimited Mileage
	S21-170, S21-190, S23-170, S23-190, S23105, S25-190, S26-190, S30-190	3 Years / 350,000 Miles (560,000 km)
Tandem Drive Axles	DS404, DS405	2 Years / Unlimited Mileage
	DSH40, DSH44, D40-170, D46-170, D50-170	3 Years / Unlimited Mileage
	DT463P, D46-590, D52-190, D52-590, D60-190, D60-590, D70-190, D70-590	2 Years / Unlimited Mileage
Non-Driving Steer Axles	All Models	3 Years / Unlimited Mileage [Tie rod end limited to 1 Year / 125,000 Miles (200,000 km)]
Wheel Seal	Standard Wheel Seal	2 Years / 200,000 Miles (320,000 km)
	LMS and Preset	3 Years / 350,000 Miles (560,000 km)
Driveshafts	All Models	Contact OEM for Warranty Coverage
LMS Hubs	All Models	3 Years / 350,000 Miles (560,000 km)
	Trailers with Approved Semi-Fluid Lubricant	5 Years / 500,000 Miles (800,000 km)
Tire Inflation and Monitor System (TIMS)	All Models	3 Years / 300,000 Miles (480,000 km)
Tire Pressure Monitoring System (TPMS)	All Models	3 Years / Unlimited Mileage
Tire Pressure Control System (TPCS)	All Models	1 Year / Unlimited Mileage



# EXTENDED WARRANTY PLANS

**MX-11**

**MX-13**



PACCAR offers a wide selection of Extended Warranty Plans for PACCAR Engines to meet your business and application needs. A PACCAR Extended Warranty Plan delivers peace of mind by providing coverage for key engine components for up to seven years beyond the standard warranty coverage.



## PACCAR MX ENGINE STANDARD WARRANTY

COMPREHENSIVE	MAJOR COMPONENT	AFTERTREATMENT
2 Years/250,000 Miles (100,000 KM)	5 Years/500,000 Miles (200,000 KM)	2 Years/250,000 Miles (100,000 KM)

### PACCAR MX ENGINE EXTENDED WARRANTY OPTIONS

### ADDITIONAL COVERAGE OPTIONS

	Ⓢ PACCAR PREMIUM Up to 5 Years/ 500,000 Miles or 7 Years/ 200,000 Miles	Ⓢ PACCAR PROTECTION 1 Up to 5 Years/ 500,000 Miles (200,000 KM)	Ⓢ PACCAR PROTECTION 2 Up to 5 Years/ 500,000 Miles (200,000 KM)	Ⓢ MAJOR COMPONENT PLAN Up to 7 Years/ 700,000 Miles (1,200,000 KM)	Ⓢ AFTERTREATMENT PLAN Up to 6 Years/ 500,000 Miles (800,000 KM)
Flywheel	Ⓢ				
Flywheel Housing	Ⓢ				
Fuel Control Valve	Ⓢ				
Fuel Filter Module	Ⓢ				
Fuel Hand Primer Pump	Ⓢ				
Fuel Lift Pump	Ⓢ				
Fuel Lines (High Pressure) Pump To Rail	Ⓢ				
Fuel Lines (High Pressure) Rail To Injector	Ⓢ				
Fuel Lines (Low Pressure)	Ⓢ				
Oil Fill Tube And Cap	Ⓢ				
Sensor EGR Temperature	Ⓢ				
Sensor, Pressure/Temp/Humidity (Before Turbocharger)	Ⓢ				
Air Inlet Pipes (Before & After Turbocharger)	Ⓢ				
Electrical Harness Supplied With Engine	Ⓢ				
Air Compressor	Ⓢ	Ⓢ			
Common Fuel Rail	Ⓢ	Ⓢ			
Electronic Engine Sensors	Ⓢ	Ⓢ			
Engine Brake	Ⓢ	Ⓢ			
Fuel Injectors	Ⓢ	Ⓢ			
Hp Fuel Unit Pumps	Ⓢ	Ⓢ			
Sensor, Exhaust Manifold Pressure	Ⓢ	Ⓢ			
Sensor, Intake Boost Pressure	Ⓢ	Ⓢ			
Turbocharger	Ⓢ	Ⓢ			
Water Pump	Ⓢ	Ⓢ			
Camshaft And Bushings	Ⓢ	Ⓢ	Ⓢ		
Connecting Rod And Bearings	Ⓢ	Ⓢ	Ⓢ		
Crankshaft And Bearings	Ⓢ	Ⓢ	Ⓢ		
Cylinder Block Assembly	Ⓢ	Ⓢ	Ⓢ		
Cylinder Head Assembly	Ⓢ	Ⓢ	Ⓢ		
Engine Control Module	Ⓢ	Ⓢ	Ⓢ		
Exhaust Gas Recirculation Cooler	Ⓢ	Ⓢ	Ⓢ		
Exhaust Gas Recirculation Mixer Valve	Ⓢ	Ⓢ	Ⓢ		
Gaskets, Seals, O-rings, Silicon Sealant	Ⓢ	Ⓢ	Ⓢ		
Gear Train	Ⓢ	Ⓢ	Ⓢ		
Oil Cooler Assembly	Ⓢ	Ⓢ	Ⓢ		
Oil Pan	Ⓢ	Ⓢ	Ⓢ		
Oil Pump Assembly	Ⓢ	Ⓢ	Ⓢ		
Piston Liners	Ⓢ	Ⓢ	Ⓢ		
Piston Rings	Ⓢ	Ⓢ	Ⓢ		
Valve Train	Ⓢ	Ⓢ	Ⓢ		
Connecting Rod Assembly				Ⓢ	
Crankshaft				Ⓢ	
Cylinder Block Assembly				Ⓢ	
Cylinder Head				Ⓢ	
Flywheel Housing				Ⓢ	
Gear Train				Ⓢ	
Camshaft				Ⓢ	
Water Pump Housing				Ⓢ	
Aftertreatment Control Module					Ⓢ
Diesel Exhaust Fluid Dosing ECM					Ⓢ
Decomposition Pipe					Ⓢ
Diesel Exhaust Fluid Pump Module					Ⓢ
Diesel Exhaust Fluid Dosing Module & Injector					Ⓢ
Diesel Particulate Filter Assembly					Ⓢ
Exhaust Gas Recirculation Temperature Sensor					Ⓢ
Hydrocarbon Doser					Ⓢ
Oxygen Sensor					Ⓢ
Selective Catalytic Reduction Assembly					Ⓢ
Select Diesel Particulate Filter and Selective Catalytic Reduction Sensors					Ⓢ

2 Hours of Air Plan included with PACCAR Premium Plan and PACCAR Protection Plan 1 (not available with Protection Plan 2)

PACCAR Inc.  
PO Box 15M  
Bellevue, WA 98009

**PACCAR POWERTRAIN**  
[www.paccarpowertrain.com](http://www.paccarpowertrain.com)

**Terms and Conditions:** PACCAR Engine extended warranty plans can be purchased in yearly and 100,000 mile (160,000 kms) increments. Plan coverage durations and mileage vary with engine horsepower and intended service. Consult with your PACCAR Dealer about all time of ordering for details. This document is to be considered a summary of coverage and to be used for reference only, and is not a binding contract. For full warranty coverage details, the respective legal document should be referenced.

1 Select components classified as Emissions Related Parts by the U.S. Environmental Protection Agency are covered for 3 years/100,000 miles.





Company ID Number: 466450

THE E-VERIFY PROGRAM FOR EMPLOYMENT VERIFICATION  
MEMORANDUM OF UNDERSTANDING

ARTICLE I

PURPOSE AND AUTHORITY

This Memorandum of Understanding (MOU) sets forth the points of agreement between the Department of Homeland Security (DHS) and Kenworth of Birmingham, Inc. (Employer) regarding the Employer's participation in the Employment Eligibility Verification Program (E-Verify). This MOU explains certain features of the E-Verify program and enumerates specific responsibilities of DHS, the Social Security Administration (SSA), and the Employer. E-Verify is a program that electronically confirms an employee's eligibility to work in the United States after completion of the Employment Eligibility Verification Form (Form I-9). For covered government contractors, E-Verify is used to verify the employment eligibility of all newly hired employees and all existing employees assigned to Federal contracts or to verify the entire workforce if the contractor so chooses.

Authority for the E-Verify program is found in Title IV, Subtitle A, of the Illegal Immigration Reform and Immigrant Responsibility Act of 1996 (IIRIRA), Pub. L. 104-208, 110 Stat. 3009, as amended (8 U.S.C. § 1324a note). Authority for use of the E-Verify program by Federal contractors and subcontractors covered by the terms of Subpart 22.18, "Employment Eligibility Verification", of the Federal Acquisition Regulation (FAR) (hereinafter referred to in this MOU as a "Federal contractor with the FAR E-Verify clause") to verify the employment eligibility of certain employees working on Federal contracts is also found in Subpart 22.18 and in Executive Order 12989, as amended.

ARTICLE II

FUNCTIONS TO BE PERFORMED

A. RESPONSIBILITIES OF SSA

1. SSA agrees to provide the Employer with available information that allows the Employer to confirm the accuracy of Social Security Numbers provided by all employees verified under this MOU and the employment authorization of U.S. citizens.
2. SSA agrees to provide to the Employer appropriate assistance with operational problems that may arise during the Employer's participation in the E-Verify program. SSA agrees to provide the Employer with names, titles, addresses, and telephone numbers of SSA representatives to be contacted during the E-Verify process.
3. SSA agrees to safeguard the information provided by the Employer through the E-Verify program procedures, and to limit access to such information, as is appropriate by law, to individuals responsible for the verification of Social Security Numbers and for evaluation of the E-Verify program or such other persons or entities who may be authorized by SSA as governed

# E-Verify



**Company ID Number: 466450**

by the Privacy Act (5 U.S.C. § 552a), the Social Security Act (42 U.S.C. 1306(a)), and SSA regulations (20 CFR Part 401).

4. SSA agrees to provide a means of automated verification that is designed (in conjunction with DHS's automated system if necessary) to provide confirmation or tentative nonconfirmation of U.S. citizens' employment eligibility within 3 Federal Government work days of the initial inquiry.

5. SSA agrees to provide a means of secondary verification (including updating SSA records as may be necessary) for employees who contest SSA tentative nonconfirmations that is designed to provide final confirmation or nonconfirmation of U.S. citizens' employment eligibility and accuracy of SSA records for both citizens and non-citizens within 10 Federal Government work days of the date of referral to SSA, unless SSA determines that more than 10 days may be necessary. In such cases, SSA will provide additional verification instructions.

## **B. RESPONSIBILITIES OF DHS**

1. After SSA verifies the accuracy of SSA records for employees through E-Verify, DHS agrees to provide the Employer access to selected data from DHS's database to enable the Employer to conduct, to the extent authorized by this MOU:

- Automated verification checks on employees by electronic means, and
- Photo verification checks (when available) on employees.

2. DHS agrees to provide to the Employer appropriate assistance with operational problems that may arise during the Employer's participation in the E-Verify program. DHS agrees to provide the Employer names, titles, addresses, and telephone numbers of DHS representatives to be contacted during the E-Verify process.

3. DHS agrees to make available to the Employer at the E-Verify Web site and on the E-Verify Web browser, instructional materials on E-Verify policies, procedures and requirements for both SSA and DHS, including restrictions on the use of E-Verify. DHS agrees to provide training materials on E-Verify.

4. DHS agrees to provide to the Employer a notice, which indicates the Employer's participation in the E-Verify program. DHS also agrees to provide to the Employer anti-discrimination notices issued by the Office of Special Counsel for Immigration-Related Unfair Employment Practices (OSC), Civil Rights Division, U.S. Department of Justice.

5. DHS agrees to issue the Employer a user identification number and password that permits the Employer to verify information provided by employees with DHS's database.

6. DHS agrees to safeguard the information provided to DHS by the Employer, and to limit access to such information to individuals responsible for the verification of employees' employment eligibility and for evaluation of the E-Verify program, or to such other persons or entities as may be authorized by applicable law. Information will be used only to verify the accuracy of Social Security Numbers and employment eligibility, to enforce the Immigration and





**Company ID Number: 466450**

Nationality Act (INA) and Federal criminal laws, and to administer Federal contracting requirements.

7. DHS agrees to provide a means of automated verification that is designed (in conjunction with SSA verification procedures) to provide confirmation or tentative nonconfirmation of employees' employment eligibility within 3 Federal Government work days of the initial inquiry.

8. DHS agrees to provide a means of secondary verification (including updating DHS records as may be necessary) for employees who contest DHS tentative nonconfirmations and photo non-match tentative nonconfirmations that is designed to provide final confirmation or nonconfirmation of the employees' employment eligibility within 10 Federal Government work days of the date of referral to DHS, unless DHS determines that more than 10 days may be necessary. In such cases, DHS will provide additional verification instructions.

### **C. RESPONSIBILITIES OF THE EMPLOYER**

1. The Employer agrees to display the notices supplied by DHS in a prominent place that is clearly visible to prospective employees and all employees who are to be verified through the system.

2. The Employer agrees to provide to the SSA and DHS the names, titles, addresses, and telephone numbers of the Employer representatives to be contacted regarding E-Verify.

3. The Employer agrees to become familiar with and comply with the most recent version of the E-Verify User Manual.

4. The Employer agrees that any Employer Representative who will perform employment verification queries will complete the E-Verify Tutorial before that individual initiates any queries.

A. The Employer agrees that all Employer representatives will take the refresher tutorials initiated by the E-Verify program as a condition of continued use of E-Verify.

B. Failure to complete a refresher tutorial will prevent the Employer from continued use of the program.

5. The Employer agrees to comply with current Form I-9 procedures, with two exceptions:

- If an employee presents a "List B" identity document, the Employer agrees to only accept "List B" documents that contain a photo. (List B documents identified in 8 C.F.R. § 274a.2(b)(1)(B) can be presented during the Form I-9 process to establish identity.) If an employee objects to the photo requirement for religious reasons, the Employer should contact E-Verify at 888-464-4218.

- If an employee presents a DHS Form I-551 (Permanent Resident Card) or Form I-766 (Employment Authorization Document) to complete the Form I-9, the Employer agrees to make a photocopy of the document and to retain the photocopy with the employee's Form I-9. The photocopy must be of sufficient quality to allow for verification of the photo



# E-Verify



Company ID Number: 466450

and written information. The employer will use the photocopy to verify the photo and to assist DHS with its review of photo non-matches that are contested by employees. Note that employees retain the right to present any List A, or List B and List C, documentation to complete the Form I-9. DHS may in the future designate other documents that activate the photo screening tool.

6. The Employer understands that participation in E-Verify does not exempt the Employer from the responsibility to complete, retain, and make available for inspection Forms I-9 that relate to its employees, or from other requirements of applicable regulations or laws, including the obligation to comply with the antidiscrimination requirements of section 274B of the INA with respect to Form I-9 procedures, except for the following modified requirements applicable by reason of the Employer's participation in E-Verify: (1) identity documents must have photos, as described in paragraph 5 above; (2) a rebuttable presumption is established that the Employer has not violated section 274A(a)(1)(A) of the Immigration and Nationality Act (INA) with respect to the hiring of any individual if it obtains confirmation of the identity and employment eligibility of the individual in good faith compliance with the terms and conditions of E-Verify; (3) the Employer must notify DHS if it continues to employ any employee after receiving a final nonconfirmation, and is subject to a civil money penalty between \$550 and \$1,100 for each failure to notify DHS of continued employment following a final nonconfirmation; (4) the Employer is subject to a rebuttable presumption that it has knowingly employed an unauthorized alien in violation of section 274A(a)(1)(A) if the Employer continues to employ an employee after receiving a final nonconfirmation; and (5) no person or entity participating in E-Verify is civilly or criminally liable under any law for any action taken in good faith based on information provided through the confirmation system. DHS reserves the right to conduct Form I-9 and E-Verify system compliance inspections during the course of E-Verify, as well as to conduct any other enforcement activity authorized by law.

7. The Employer agrees to initiate E-Verify verification procedures for new employees within 3 Employer business days after each employee has been hired (but after the Form I-9 has been completed), and to complete as many (but only as many) steps of the E-Verify process as are necessary according to the E-Verify User Manual, or in the case of Federal contractors with the FAR E-Verify clause, the E-Verify User Manual for Federal Contractors. The Employer is prohibited from initiating verification procedures before the employee has been hired and the Form I-9 completed. If the automated system to be queried is temporarily unavailable, the 3-day time period is extended until it is again operational in order to accommodate the Employer's attempting, in good faith, to make inquiries during the period of unavailability. Employers may initiate verification by notating the Form I-9 in circumstances where the employee has applied for a Social Security Number (SSN) from the SSA and is waiting to receive the SSN, provided that the Employer performs an E-Verify employment verification query using the employee's SSN as soon as the SSN becomes available.

8. The Employer agrees not to use E-Verify procedures for pre-employment screening of job applicants, in support of any unlawful employment practice, or for any other use not authorized by this MOU. Employers must use E-Verify for all new employees, unless an Employer is a Federal contractor that qualifies for the exceptions described in Article II.D.1.c. Except as provided in Article II.D, the Employer will not verify selectively and will not verify employees hired before the effective date of this MOU. The Employer understands that if the Employer



# E-Verify



Company ID Number: 466450

uses the E-Verify system for any purpose other than as authorized by this MOU, the Employer may be subject to appropriate legal action and termination of its access to SSA and DHS information pursuant to this MOU.

9. The Employer agrees to follow appropriate procedures (see Article III. below) regarding tentative nonconfirmations, including notifying employees in private of the finding and providing them written notice of the findings, providing written referral instructions to employees, allowing employees to contest the finding, and not taking adverse action against employees if they choose to contest the finding. Further, when employees contest a tentative nonconfirmation based upon a photo non-match, the Employer is required to take affirmative steps (see Article III.B. below) to contact DHS with information necessary to resolve the challenge.

10. The Employer agrees not to take any adverse action against an employee based upon the employee's perceived employment eligibility status while SSA or DHS is processing the verification request unless the Employer obtains knowledge (as defined in 8 C.F.R. § 274a.1(l)) that the employee is not work authorized. The Employer understands that an initial inability of the SSA or DHS automated verification system to verify work authorization, a tentative nonconfirmation, a case in continuance (indicating the need for additional time for the government to resolve a case), or the finding of a photo non-match, does not establish, and should not be interpreted as evidence, that the employee is not work authorized. In any of the cases listed above, the employee must be provided a full and fair opportunity to contest the finding, and if he or she does so, the employee may not be terminated or suffer any adverse employment consequences based upon the employee's perceived employment eligibility status (including denying, reducing, or extending work hours, delaying or preventing training, requiring an employee to work in poorer conditions, refusing to assign the employee to a Federal contract or other assignment, or otherwise subjecting an employee to any assumption that he or she is unauthorized to work) until and unless secondary verification by SSA or DHS has been completed and a final nonconfirmation has been issued. If the employee does not choose to contest a tentative nonconfirmation or a photo non-match or if a secondary verification is completed and a final nonconfirmation is issued, then the Employer can find the employee is not work authorized and terminate the employee's employment. Employers or employees with questions about a final nonconfirmation may call E-Verify at 1-888-464-4218 or OSC at 1-800-255-8155 or 1-800-237-2515 (TDD).

11. The Employer agrees to comply with Title VII of the Civil Rights Act of 1964 and section 274B of the INA, as applicable, by not discriminating unlawfully against any individual in hiring, firing, or recruitment or referral practices because of his or her national origin or, in the case of a protected individual as defined in section 274B(a)(3) of the INA, because of his or her citizenship status. The Employer understands that such illegal practices can include selective verification or use of E-Verify except as provided in part D below, or discharging or refusing to hire employees because they appear or sound "foreign" or have received tentative nonconfirmations. The Employer further understands that any violation of the unfair immigration-related employment practices provisions in section 274B of the INA could subject the Employer to civil penalties, back pay awards, and other sanctions, and violations of Title VII could subject the Employer to back pay awards, compensatory and punitive damages. Violations of either section 274B of the INA or Title VII may also lead to the termination of its participation in E-





**Company ID Number: 466450**

Verify. If the Employer has any questions relating to the anti-discrimination provision, it should contact OSC at 1-800-255-8155 or 1-800-237-2515 (TDD).

12. The Employer agrees to record the case verification number on the employee's Form I-9 or to print the screen containing the case verification number and attach it to the employee's Form I-9.

13. The Employer agrees that it will use the information it receives from SSA or DHS pursuant to E-Verify and this MOU only to confirm the employment eligibility of employees as authorized by this MOU. The Employer agrees that it will safeguard this information, and means of access to it (such as PINS and passwords) to ensure that it is not used for any other purpose and as necessary to protect its confidentiality, including ensuring that it is not disseminated to any person other than employees of the Employer who are authorized to perform the Employer's responsibilities under this MOU, except for such dissemination as may be authorized in advance by SSA or DHS for legitimate purposes.

14. The Employer acknowledges that the information which it receives from SSA is governed by the Privacy Act (5 U.S.C. § 552a(i)(1) and (3)) and the Social Security Act (42 U.S.C. 1306(a)), and that any person who obtains this information under false pretenses or uses it for any purpose other than as provided for in this MOU may be subject to criminal penalties.

15. The Employer agrees to cooperate with DHS and SSA in their compliance monitoring and evaluation of E-Verify, including by permitting DHS and SSA, upon reasonable notice, to review Forms I-9 and other employment records and to interview it and its employees regarding the Employer's use of E-Verify, and to respond in a timely and accurate manner to DHS requests for information relating to their participation in E-Verify.

#### **D. RESPONSIBILITIES OF FEDERAL CONTRACTORS WITH THE FAR E-VERIFY CLAUSE**

1. The Employer understands that if it is a subject to the employment verification terms in Subpart 22.18 of the FAR, it must verify the employment eligibility of any existing employee assigned to the contract and all new hires, as discussed in the Supplemental Guide for Federal Contractors. Once an employee has been verified through E-Verify by the Employer, the Employer may not reverify the employee through E-Verify.

a. Federal contractors with the FAR E-Verify clause agree to become familiar with and comply with the most recent versions of the E-Verify User Manual for Federal Contractors and the E-Verify Supplemental Guide for Federal Contractors.

b. Federal contractors with the FAR E-Verify clause agree to complete a tutorial for Federal contractors with the FAR E-Verify clause.

c. Federal contractors with the FAR E-Verify clause not enrolled at the time of contract award: An Employer that is not enrolled in E-Verify at the time of a contract award must enroll as a Federal contractor with the FAR E-Verify clause in E-Verify within 30 calendar days of contract award and, within 90 days of enrollment, begin to use E-Verify to initiate verification of employment eligibility of new hires of the Employer who are working in the United States,



# E-Verify



Company ID Number: 466450

whether or not assigned to the contract. Once the Employer begins verifying new hires, such verification of new hires must be initiated within 3 business days after the date of hire. Once enrolled in E-Verify as a Federal contractor with the FAR E-Verify clause, the Employer must initiate verification of employees assigned to the contract within 90 calendar days from the time of enrollment in the system and after the date and selecting which employees will be verified in E-Verify or within 30 days of an employee's assignment to the contract, whichever date is later.

d. Employers that are already enrolled in E-Verify at the time of a contract award but are not enrolled in the system as a Federal contractor with the FAR E-Verify clause: Employers enrolled in E-Verify for 90 days or more at the time of a contract award must use E-Verify to initiate verification of employment eligibility for new hires of the Employer who are working in the United States, whether or not assigned to the contract, within 3 business days after the date of hire. Employers enrolled in E-Verify as other than a Federal contractor with the FAR E-Verify clause, must update E-Verify to indicate that they are a Federal contractor with the FAR E-Verify clause within 30 days after assignment to the contract. If the Employer is enrolled in E-Verify for 90 calendar days or less at the time of contract award, the Employer must, within 90 days of enrollment, begin to use E-Verify to initiate verification of new hires of the contractor who are working in the United States, whether or not assigned to the contract. Such verification of new hires must be initiated within 3 business days after the date of hire. An Employer enrolled as a Federal contractor with the FAR E-Verify clause in E-Verify must initiate verification of each employee assigned to the contract within 90 calendar days after date of contract award or within 30 days after assignment to the contract, whichever is later.

e. Institutions of higher education, State, local and tribal governments and sureties: Federal contractors with the FAR E-Verify clause that are institutions of higher education (as defined at 20 U.S.C. 1001(a)), State or local governments, governments of Federally recognized Indian tribes, or sureties performing under a takeover agreement entered into with a Federal agency pursuant to a performance bond may choose to only verify new and existing employees assigned to the Federal contract. Such Federal contractors with the FAR E-Verify clause may, however, elect to verify all new hires, and/or all existing employees hired after November 6, 1986. The provisions of Article II.D, paragraphs 1.a and 1.b of this MOU providing timeframes for initiating employment verification of employees assigned to a contract apply to such institutions of higher education, State, local and tribal governments, and sureties.

f. Verification of all employees: Upon enrollment, Employers who are Federal contractors with the FAR E-Verify clause may elect to verify employment eligibility of all existing employees working in the United States who were hired after November 6, 1986, instead of verifying only new employees and those existing employees assigned to a covered Federal contract. After enrollment, Employers must elect to do so only in the manner designated by DHS and initiate E-Verify verification of all existing employees within 180 days after the election.

g. Form I-9 procedures for existing employees of Federal contractors with the FAR E-Verify clause: Federal contractors with the FAR E-Verify clause may choose to complete new Forms I-9 for all existing employees other than those that are completely exempt from this process. Federal contractors with the FAR E-Verify clause may also update previously completed Forms I-9 to initiate E-Verify verification of existing employees who are not completely exempt as long as that Form I-9 is complete (including the SSN), complies with





Company ID Number: 466450

Article II.C.5, the employee's work authorization has not expired, and the Employer has reviewed the information reflected in the Form I-9 either in person or in communications with the employee to ensure that the employee's stated basis in section 1 of the Form I-9 for work authorization has not changed (including, but not limited to, a lawful permanent resident alien having become a naturalized U.S. citizen). If the Employer is unable to determine that the Form I-9 complies with Article II.C.5, if the employee's basis for work authorization as attested in section 1 has expired or changed, or if the Form I-9 contains no SSN or is otherwise incomplete, the Employer shall complete a new I-9 consistent with Article II.C.5, or update the previous I-9 to provide the necessary information. If section 1 of the Form I-9 is otherwise valid and up-to-date and the form otherwise complies with Article II.C.5, but reflects documentation (such as a U.S. passport or Form I-551) that expired subsequent to completion of the Form I-9, the Employer shall not require the production of additional documentation, or use the photo screening tool described in Article II.C.5, subject to any additional or superseding instructions that may be provided on this subject in the Supplemental Guide for Federal Contractors. Nothing in this section shall be construed to require a second verification using E-Verify of any assigned employee who has previously been verified as a newly hired employee under this MOU, or to authorize verification of any existing employee by any Employer that is not a Federal contractor with the FAR E-Verify clause.

2. The Employer understands that if it is a Federal contractor with the FAR E-Verify clause, its compliance with this MOU is a performance requirement under the terms of the Federal contract or subcontract, and the Employer consents to the release of information relating to compliance with its verification responsibilities under this MOU to contracting officers or other officials authorized to review the Employer's compliance with Federal contracting requirements.

### ARTICLE III

## REFERRAL OF INDIVIDUALS TO SSA AND DHS

### A. REFERRAL TO SSA

1. If the Employer receives a tentative nonconfirmation issued by SSA, the Employer must print the notice as directed by the E-Verify system and provide it to the employee so that the employee may determine whether he or she will contest the tentative nonconfirmation. The Employer must review the tentative nonconfirmation with the employee in private.

2. The Employer will refer employees to SSA field offices only as directed by the automated system based on a tentative nonconfirmation, and only after the Employer records the case verification number, reviews the input to detect any transaction errors, and determines that the employee contests the tentative nonconfirmation. The Employer will transmit the Social Security Number to SSA for verification again if this review indicates a need to do so. The Employer will determine whether the employee contests the tentative nonconfirmation as soon as possible after the Employer receives it.

3. If the employee contests an SSA tentative nonconfirmation, the Employer will provide the employee with a system-generated referral letter and instruct the employee to visit an SSA office within 8 Federal Government work days. SSA will electronically transmit the result of the referral to the Employer within 10 Federal Government work days of the referral unless it



Company ID Number: 466450

determines that more than 10 days is necessary. The Employer agrees to check the E-Verify system regularly for case updates.

4. The Employer agrees not to ask the employee to obtain a printout from the Social Security Number database (the Numident) or other written verification of the Social Security Number from the SSA.

## B. REFERRAL TO DHS

1. If the Employer receives a tentative nonconfirmation issued by DHS, the Employer must print the tentative nonconfirmation notice as directed by the E-Verify system and provide it to the employee so that the employee may determine whether he or she will contest the tentative nonconfirmation. The Employer must review the tentative nonconfirmation with the employee in private.

2. If the Employer finds a photo non-match for an employee who provides a document for which the automated system has transmitted a photo, the employer must print the photo non-match tentative nonconfirmation notice as directed by the automated system and provide it to the employee so that the employee may determine whether he or she will contest the finding. The Employer must review the tentative nonconfirmation with the employee in private.

3. The Employer agrees to refer individuals to DHS only when the employee chooses to contest a tentative nonconfirmation received from DHS automated verification process or when the Employer issues a tentative nonconfirmation based upon a photo non-match. The Employer will determine whether the employee contests the tentative nonconfirmation as soon as possible after the Employer receives it.

4. If the employee contests a tentative nonconfirmation issued by DHS, the Employer will provide the employee with a referral letter and instruct the employee to contact DHS through its toll-free hotline (as found on the referral letter) within 8 Federal Government work days.

5. If the employee contests a tentative nonconfirmation based upon a photo non-match, the Employer will provide the employee with a referral letter to DHS. DHS will electronically transmit the result of the referral to the Employer within 10 Federal Government work days of the referral unless it determines that more than 10 days is necessary. The Employer agrees to check the E-Verify system regularly for case updates.

6. The Employer agrees that if an employee contests a tentative nonconfirmation based upon a photo non-match, the Employer will send a copy of the employee's Form I-551 or Form I-766 to DHS for review by:

- Scanning and uploading the document, or
- Sending a photocopy of the document by an express mail account (paid for at employer expense).

7. If the Employer determines that there is a photo non-match when comparing the photocopied List B document described in Article II.C.5 with the image generated in E-Verify, the Employer must forward the employee's documentation to DHS using one of the means described in the preceding paragraph, and allow DHS to resolve the case.





Company ID Number: 466450

#### ARTICLE IV

#### SERVICE PROVISIONS

SSA and DHS will not charge the Employer for verification services performed under this MOU. The Employer is responsible for providing equipment needed to make inquiries. To access E-Verify, an Employer will need a personal computer with Internet access.

#### ARTICLE V

#### PARTIES

A. This MOU is effective upon the signature of all parties, and shall continue in effect for as long as the SSA and DHS conduct the E-Verify program unless modified in writing by the mutual consent of all parties, or terminated by any party upon 30 days prior written notice to the others. Any and all system enhancements to the E-Verify program by DHS or SSA, including but not limited to the E-Verify checking against additional data sources and instituting new verification procedures, will be covered under this MOU and will not cause the need for a supplemental MOU that outlines these changes. DHS agrees to train employers on all changes made to E-Verify through the use of mandatory refresher tutorials and updates to the E-Verify User Manual, the E-Verify User Manual for Federal Contractors or the E-Verify Supplemental Guide for Federal Contractors. Even without changes to E-Verify, DHS reserves the right to require employers to take mandatory refresher tutorials. An Employer that is a Federal contractor with the FAR E-Verify clause may terminate this MOU when the Federal contract that requires its participation in E-Verify is terminated or completed. In such a circumstance, the Federal contractor with the FAR E-Verify clause must provide written notice to DHS. If an Employer that is a Federal contractor with the FAR E-Verify clause fails to provide such notice, that Employer will remain a participant in the E-Verify program, will remain bound by the terms of this MOU that apply to participants that are not Federal contractors with the FAR E-Verify clause, and will be required to use the E-Verify procedures to verify the employment eligibility of all newly hired employees.

B. Notwithstanding Article V, part A of this MOU, DHS may terminate this MOU if deemed necessary because of the requirements of law or policy, or upon a determination by SSA or DHS that there has been a breach of system integrity or security by the Employer, or a failure on the part of the Employer to comply with established procedures or legal requirements. The Employer understands that if it is a Federal contractor with the FAR E-Verify clause, termination of this MOU by any party for any reason may negatively affect its performance of its contractual responsibilities.

C. Some or all SSA and DHS responsibilities under this MOU may be performed by contractor(s), and SSA and DHS may adjust verification responsibilities between each other as they may determine necessary. By separate agreement with DHS, SSA has agreed to perform its responsibilities as described in this MOU.



# E-Verify



**Company ID Number: 466450**

D. Nothing in this MOU is intended, or should be construed, to create any right or benefit, substantive or procedural, enforceable at law by any third party against the United States, its agencies, officers, or employees, or against the Employer, its agents, officers, or employees.

E. Each party shall be solely responsible for defending any claim or action against it arising out of or related to E-Verify or this MOU, whether civil or criminal, and for any liability wherefrom, including (but not limited to) any dispute between the Employer and any other person or entity regarding the applicability of Section 403(d) of IIRIRA to any action taken or allegedly taken by the Employer.

F. The Employer understands that the fact of its participation in E-Verify is not confidential information and may be disclosed as authorized or required by law and DHS or SSA policy, including but not limited to, Congressional oversight, E-Verify publicity and media inquiries, determinations of compliance with Federal contractual requirements, and responses to inquiries under the Freedom of Information Act (FOIA).

G. The foregoing constitutes the full agreement on this subject between DHS and the Employer.

H. The individuals whose signatures appear below represent that they are authorized to enter into this MOU on behalf of the Employer and DHS respectively.



Company ID Number: 466450

To be accepted as a participant in E-Verify, you should only sign the Employer's Section of the signature page. If you have any questions, contact E-Verify at 888-464-4218.

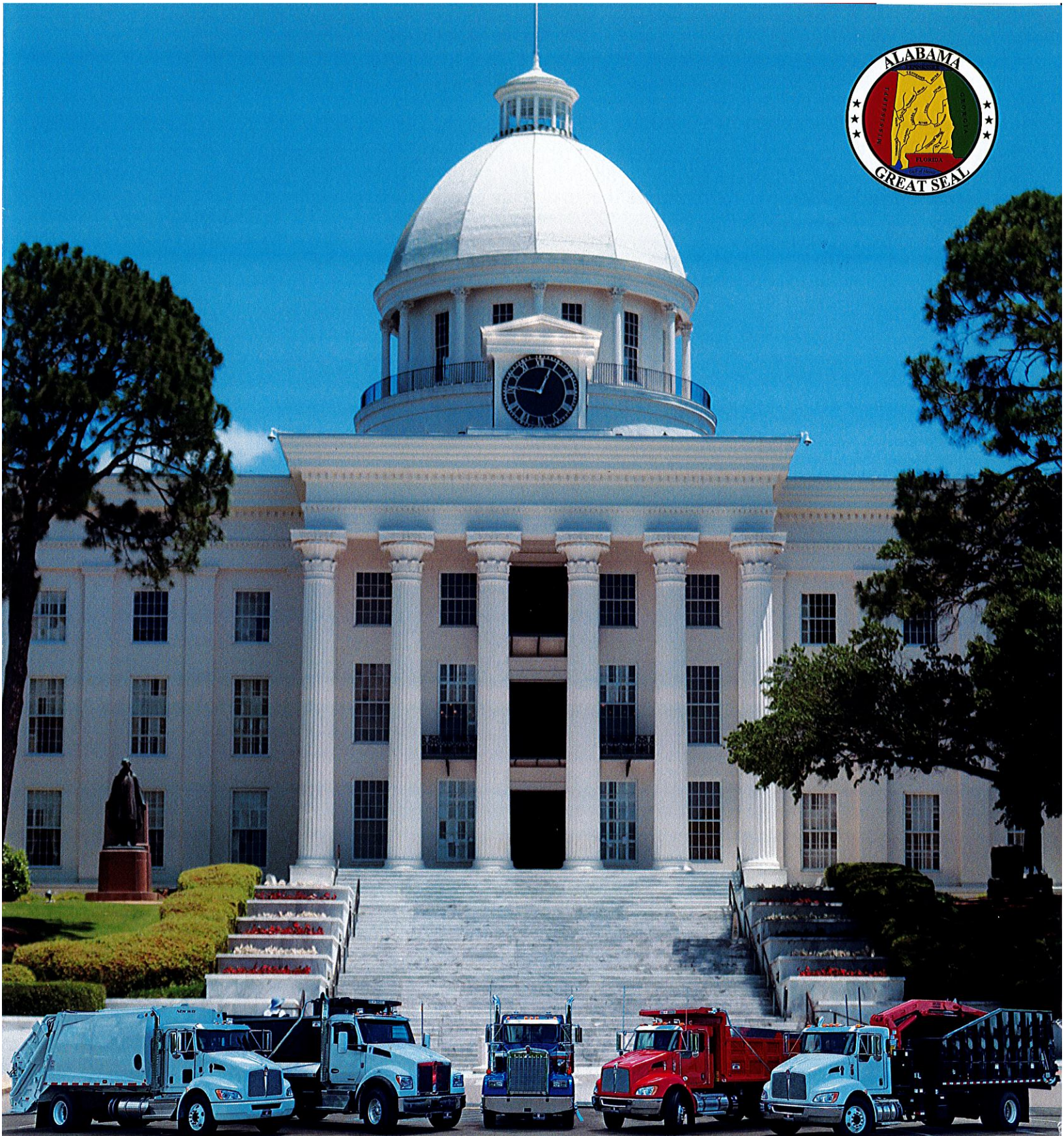
<b>Employer Kenworth of Birmingham, Inc.</b>	
<b>Michele Beasley</b> Name (Please Type or Print)	Title
<b>Electronically Signed</b> Signature	<b>11/16/2011</b> Date
<b>Department of Homeland Security – Verification Division</b>	
<b>USCIS Verification Division</b>	
Name (Please Type or Print)	Title
<b>Electronically Signed</b> Signature	<b>11/16/2011</b> Date

Information Required for the E-Verify Program

Information relating to your Company:

Company Name:	Kenworth of Birmingham, Inc.
Company Facility Address:	2220 Finley Blvd. Birmingham, AL 35234
Company Alternate Address:	
County or Parish:	JEFFERSON
Employer Identification Number:	630739540





# TRUCKWORX

*Prepared for Alabama Municipalities*



# WHO WE ARE

Truckworx is the Southeast's premier commercial truck, trailer, and bus dealer featuring nationally acclaimed parts and service teams and award-winning product lines since 1978. **Truckworx is the partner you can count on in the transportation industry.** We recognize that in our line of work, time is money, and our goal is to keep our customers' trucks and buses on the road and running smoothly. We do that by making the investment where it counts. Our knowledgeable, experienced parts, service, and equipment sales teams maintain up-to-date training on products and equipment so that we can solve our customers' problems correctly and efficiently. From spec'ing a new truck for optimized performance to repairing your truck right the first time, Truckworx has you covered; now and for years to come.

## WHY PARTNER WITH TRUCKWORX?

As Alabama's exclusive Kenworth truck dealer since 1978, Truckworx has the knowledge and experience to help your municipality drive The World's Best© trucks for less! Our experienced sales staff will work with you to tailor a plan specifically designed with your budget in mind. We offer a number of purchasing avenues to ensure a streamlined and efficient purchase process for you. In addition to sealed bids, we have longstanding partnerships with a variety of associations and co-ops throughout Alabama and nationally to make your purchase easy and headache-free!



Contract 060920-KTC



## WHY KENWORTH?

Since 1923, Kenworth has forged a reputation of craftsmanship, durability, and engineering excellence that remains unrivaled even today. Whether you are moving heavy equipment to a jobsite or hauling sand and gravel across the state of Alabama, Kenworth is the truck you can depend on to get the job done. Some benefits include:

- » **Highest Residual Value = Lowest Overall Cost of Ownership:** Kenworth trucks are known for quality and dependability. Year after year, Kenworth trucks bring significantly higher resale values at J. M. Wood Auction for similarly spec'd trucks.
- » **Bigger, Better Engine:** Kenworth trucks come standard with bigger, better engines with more horsepower than our competitors.
- » **Best in Class Driver Comfort:** Kenworth incorporates the perfect mix of technology and quality in their vehicles. Examples include a fully customizable digital dashboard, extra storage, enhanced connectivity options and more.
- » **Unmatched Service Network:** Truckworx offers mobile service and daily parts delivery throughout the state; plus a nationwide network of over 400 warranty-certified Kenworth dealers.



TRUCKWORX IS PROUD TO BRING KENWORTH TRUCKS TO THE GREAT STATE OF ALABAMA AND WE HAVE A **BUYBACK OPTION** TO PROVE IT! ASK OUR EXPERIENCED SALES STAFF ABOUT THE TRUCKWORX 1-YEAR, 2-YEAR, AND 3-YEAR BUYBACK PROGRAM FOR YOUR NEXT TRUCK PURCHASE.



# OUR PRODUCTS

Truckworx offers Class 3-8 trucks for virtually any application. Our knowledgeable sales team will work with you to customize a solution tailored to your specific needs. We partner with a number of body companies to produce equipment that will exceed your expectations every day including: **Ox Bodies, New Way, Brush Hawg, Sansom Equipment, Ingram Equipment, Heil, PacMac, and Vactor**. Popular products include:

## Dump Trucks



T880 Triaxle



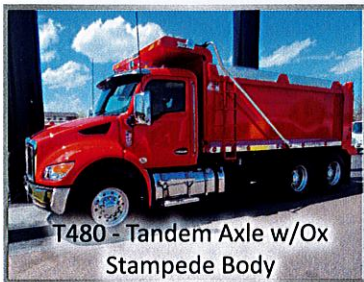
W990 Triaxle



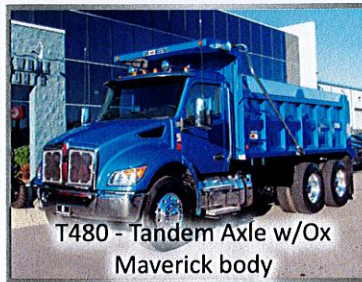
T880S Set Forward Tandem Axle



T880 Tandem Axle



T480 - Tandem Axle w/Ox  
Stampede Body



T480 - Tandem Axle w/Ox  
Maverick body



T370 - Single Axle



T270 - Single Axle

## Refuse/Garbage Trucks



T880 Rolloff



T880S 25Y Rear Loader



T480 Automated Side Loader



T480 Rolloff



T370 Tandem Axle Rear Loader



T370 Automated Side Loader



T370 Rolloff

## Knucklebooms



T880 - Tandem Axle



T370 - Tandem Axle



T370 - Brush Hawg Single Axle

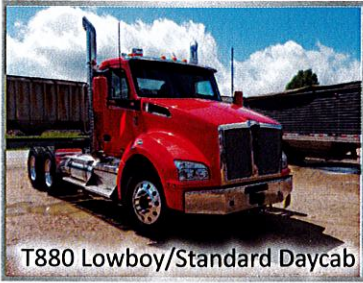


T370 - PacMac Single Axle



# Our Products (continued)

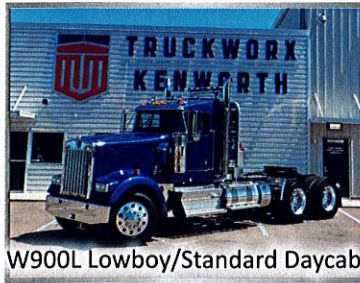
## Tractors



T880 Lowboy/Standard Daycab



T880S Set Forward Axle



W900L Lowboy/Standard Daycab

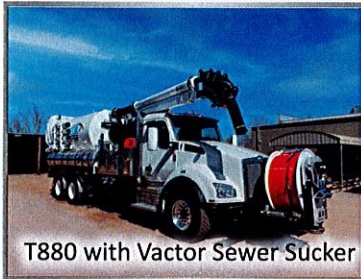


W990 Lowboy/Standard Daycab

## Specialty Trucks



Asphalt Patcher



T880 with Vactor Sewer Sucker



Hino Garbage Truck



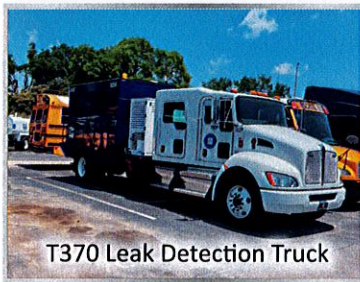
T880 Crane Truck



Isuzu NPR with Curb Tender



T280 Service Truck



T370 Leak Detection Truck



T480S Mixer Truck

## CONTACT US



**Jessica Perez**

South Alabama Government Sales  
Cell: (334) 651-3898  
Email: JessicaP@truckworx.com



**Heith Pike**

North Alabama Government Sales  
Cell: (205) 446-3028  
Email: HeithP@truckworx.com



**Carl Cummings**

Central Alabama Government Sales  
Cell: (205) 283-0878  
Email: CarlC@truckworx.com

# WITH 10 ALABAMA LOCATIONS TO SERVE YOU!

150 Repair Bays • 150 Service Employees • Dedicated Express Bays  
Service Triage • On-site Service Trucks • Daily Parts Delivery

**TRUCKWORX.COM**

