

BID SUBMITTAL FORM
Alabama County Joint Bid Program
BID ITEM – Rubber Tire Roller

Company Name: TRACTOR AND EQUIPMENT Co. INC

Address: P.O. Box 12326

BIRMINGHAM AL 35212

Bid Submitted by: AUTREY McMILLAN JR
(Name of company representative)

Title: V.P. E-mail address: AMCMILLAN@TEC1943.COM

Phone: 205-591-2131 Fax: 205-591-8321

By submitting this bid, we agree:

The equipment model number identified below meets the bid specs for this bid item

Initials
AM

That the bid price will be honored for all counties for the period from January 1, 2023 to December 31, 2023.

AM

The equipment will be delivered at the bid price to all counties participating in the joint bid program

AM

The company representative listed above will be the contact person for purchasing this bid item under the joint bid program

AM

The bid is accompanied by a current catalog or model specification document for the model number identified below

AM

The bid is accompanied by a copy of the manufacturer's standard warranty as required in the bid specifications

AM

The bid includes the e-verify documentation required by Alabama law

AM

If awarded the bid, a performance bond will be provided upon request

AM

The bid documents include the **Manufacturer's Suggested Retail Price Sheet (MSRP) for the Standard Machine**

AM

Rubber Tire Roller

Total Bid Price for Standard Machine: \$ 152,000⁰⁰
(Total Bid Price for Standard Machine Includes Freight Preparation, Delivery and Standard Warranty Costs) *

Freight Preparation and Delivery: \$ 4800⁰⁰
(Included in Standard Machine Bid Price)

Manufacturer's Suggested Retail Price for Standard Machine: \$ 173,800⁰⁰

Equipment Model #: HP180i (HAMM)

Description: RUBBER TIRE ASPHALT ROLLER

Signature of company representative submitting bid: 

Title: V.P.

***NOTE:** Award will be made based on the total cost of the **Standard Machine**. The total cost of the standard machine is to include the freight preparation, delivery and standard warranty cost. Freight preparation, delivery will be excluded from the total bid price of the standard machine in determining the percentage discount for any available options.

BID SUBMITTAL FORM: OPTION COST SHEET
Rubber Tire Roller

By submitting this bid, we agree:

To offer any available options at the percent difference between the Manufacturer's Suggested Retail Price Sheet and the actual bid price on the Standard Machine*

AM

The bid documents include the Manufacturer's Suggested Retail Price Sheet (MSRP) with **any available Options** for the Standard Machine

AM

Equipment Model #: HP 180i (HAMM)

Description: RUBBER TIRE ASPHALT ROLLER

Signature of company representative submitting bid: _____



Title: _____



***NOTE:** The percent difference between the **Manufacturer's Suggested Retail Price Sheet (MSRP)** for the standard machine as specified by these **Bid Specifications** and the actual price bid by the vendor will be calculated to determine the percentage discount to be applied to any available options. The bid price of the freight preparation, delivery cost shall be excluded in determining the percentage discount to be applied to available options. Any individual county may choose to add any available option to the standard machine at the percentage discount at the time of purchase.

BID SPECIFICATIONS FOR RUBBER TIRE ROLLER

GENERAL

These specifications shall be construed as the minimum acceptable standards for a **Rubber Tire Roller**. Should the manufacturer's current published data or specifications exceed these standards, the manufacturer's standards shall be considered minimum and shall be furnished. All integral parts not specifically mentioned in the scope of these specifications that are necessary to provide a complete working unit shall be furnished. Additionally, the machine offered for bid shall include all standard manufacturer's equipment. The roller must be a new current production model. The roller must be a new current production model and shall meet all EPA and other applicable standards at the time of manufacture.

The use of specific names and numbers in the specifications is not intended to restrict the bidder or any seller or manufacturer but is intended solely for the purpose of indicating the type, size, and quality of equipment considered best adapted to the uses of counties participating in this joint bid.

BID SUBMITTAL FORM

Each bidder must submit his or her bid on the Bid Submittal Form included in the invitation to bid package. All written warranties to be submitted shall be attached to the Bid Submittal Form.

BID PRICE

The price bid shall include all destination charges, delivery charges, title fees, rebates, and all other applicable costs and refunds.

MANUALS

Each unit shall be provided with one (1) copy of the operator's manual, (1) copy of the repair manual and one (1) copy of the current parts manual. Units will not be accepted for delivery until the manuals as outlined above are received by the purchaser.

REPLACEMENT PARTS AVAILABILITY

Parts must be available for 5 years or 7,500 hours of use for the piece of equipment bid. If replacement parts are not delivered within three (3) working days of an order being placed, the bidder will deliver an equivalent machine for the county to use at no cost to the county until such time as the parts are delivered to the county so it can affect repairs to its machine.

WARRANTY

Bidders shall submit a copy of the manufacturer's standard warranty. Warranty shall include service response time of maximum of 36 hours within notification by county.

Yes No
Page# _____
or
Attachment

ENGINE

Four (4) cylinder, four (4) stroke cycle, water cooled and turbocharged diesel engine, capable of developing a minimum of 70 horsepower.
Minimum 60 gal. fuel tank.

Yes No
Page # 2

WEIGHT (STANDARD OPERATING)

The factory specified operating weight only. No additional weights may be added for the purpose of meeting these specifications.
Minimum 18,000 lbs. standard with ROPS.

Yes No
Page # 2

STARTING SYSTEM

Unit shall be equipped with a 12-volt electrical system.

Yes No
Page # 2

DRIVE

Infinitely variable hydrostatic drive system. 0-9 mph.

Yes No
Page # 2

Tires

4 front and 4 rear tires. 11.00-R20 front and rear. Width over tires min. 72 inches.

Yes No
Page# 2

BRAKES

Service brakes – Hydrostatic

Yes No
Page # 2

Parking brake.

Yes No
Page # 2

OPERATOR'S PLATFORM

Unit shall include: ROPS Canopy; vibration isolated, anti-slip operator platform; lockable instrument panel cover; emergency stop; horn; hour meter; Gauges and/or warning lights for fuel level, coolant temperature, engine oil pressure, engine temperature, and charging system; adjustable seat with seatbelt; rear view mirrors; and safety rail.

Yes No
Page # 2

OTHER FEATURES

Lockable hood;

Yes No
Page # 2

Oil level sight gauges;

Yes No
Page # 2

Backup alarm;

Yes No
Page # 2

Battery master switch;

Yes No
Page # 2

Slow moving vehicle sign;

Yes No
Page # 2

Water Tank min. 50 gallons

Yes No
Page # 2

Rotating beacon mounted on ROPS.

Yes No
Page # 2

INVITATION TO BID HEAVY EQUIPMENT

NOTICE OF BID OPENING

NOTICE IS HEREBY GIVEN that the Association of County Commissions of Alabama, which administers the Alabama County Joint Bid Program on behalf of Alabama's county governing bodies, shall receive and open bids for the purchase of zero (0) or more items of heavy road equipment at its office located at 2 North Jackson Street, Montgomery, Alabama, at **10:00 a.m. on Friday, October 7, 2022**. Bid specifications are available at <http://www.alabamacounties.org/heavy-equipment/> for each of the following items:

Backhoes
Tractors
Track Mount Excavators
Compact Track Mount Excavators
Mini Track Excavator
Wheeled Excavators
Highway Speed Truck Excavators
Motor Graders
Heavy Duty Hydrostatic Bulldozers
Mulching Dozer
Wheel Loaders
Heavy Duty Dump Chassis
Lowboy Tractors
Skid Steer Loader w/no Attachments
Skid Steer Attachments

Ride-on Industrial Boom Mowers
Asphalt Distributor Truck
Chip Spreader
Rubber Tire Roller
7.5 Ton Single Drum Vibratory Roller
One-man Pothole Patchers
Trailer Mounted Patchers
Trailer Mount Mastic Patcher/Crack Sealer
Half Round End Dump Trailer
Lowboy Trailers
Road Wideners and Attachments
16' Steel Dump Bodies (Automatic and Manual)

Time is of the essence in submitting bids and only bids received in the Association office by 10:00 a.m. Central Time on Friday, October 7, 2022 will be opened and considered. Bidders and any other interested individuals are invited to attend the bid opening.

NOTICE OF BID OPENING PROCEDURES

All bids for **Heavy Equipment** will be opened and the name(s) of the bidders read aloud on the morning of the bid opening on Friday, **October 7, 2022 at 10:00 a.m.** at 2 North Jackson Street, Montgomery, AL. The specifics of each bid submitted will be compiled by the Association staff thereafter and will be available, **upon written or emailed request**, one week after the bid opening. Requests should be emailed to jointbid@alabamacounties.org.

THE INVITATION PACKAGE

The invitation package for each item to be bid includes: this invitation to bid, the written bid specifications for the particular item of heavy road equipment, and a Bid Submittal Form to be used in submitting a bid for that particular item. Bidders should verify that they have received all pages of the invitation package. If there are any omissions, the bidder should contact **Kenya Howard** in the Association office by mail, fax, or e-mail (jointbid@alabamacounties.org) to request missing pages. It is the responsibility of the bidder to make this request in sufficient time to prepare and submit the bid in time for the bid opening. Bidders should carefully read and comply with all parts of the invitation package, including all attachments and/or any addendum.

PREPARING AND SUBMITTING BIDS

All bids must be typed or hand written in ink on the attached Bid Submittal Form. **The completed Bid Submittal Form shall be placed in front of and separated from all other documents included in the bid packet, such that it will be the first document viewed upon opening the bid packet.**

Bids submitted in pencil and bids not submitted on the Bid Submittal Form will **not** be considered. All bids shall include a current catalog or model specification document for the equipment model number being offered for consideration. Bids submitted without such documentation will **not** be considered. Only information contained on the attached Bid Submittal Form and in the model specification document will be considered in evaluating bids.

Each separate requirement in the bid specification includes a block for indicating whether or not the item bid meets the specification. The bidder shall indicate compliance with each requirement by checking "Yes" or "No" in the block to the right of each bid specification. In addition, the bidder shall indicate the page number in the supplied manufacturer's equipment literature on which compliance with the specification can be verified. Failure to complete this portion of the bid form may result in the subject bid not being considered.

Each bid for one of the heavy equipment items included in the bid package must be submitted on the Bid Submittal Form for that item and forwarded in a separate envelope with the bid item and item number clearly identified on the outside of the envelope. Envelopes containing a "no bid" shall also include the words "NO BID" on the outside of the envelope. Facsimiles and e-mails will not be accepted. Bids submitted by "Express/Overnight" services must be in a separate inner envelope or package sealed and identified as stated above. All bids must be received in the Association office prior to the bid opening. Bids received after the deadline will be returned unopened.

The County Joint Bid Program reserves the right to require a performance bond from successful bidders as permitted under Alabama law. However, **no bid bond is required for this bid offering.**

All bids should be mailed or hand-delivered to:

**ATTN: Joint Bid Program
Association of County Commissions of Alabama
2 North Jackson Street, FL 7, Montgomery, Alabama 36104 (Physical Address)
P.O. Box 5040, Montgomery, Alabama 36103 (Mailing Address)**

BID SPECIFICATIONS

Please note that each piece of heavy equipment available for bid may include several different sizes and categories of machines. You should read each set of specifications very carefully as the differences vary depending upon the piece and size of equipment.

The award will be based on the total cost of the **Standard Machine** bid by the lowest responsible bidder. Each Bid shall include a **Manufacturer's Suggested Retail Price Sheet (MSRP)** for each machine bid. The percent difference between the Manufacturer's Suggested Retail Price (MSRP) for the standard machine as specified by these bid specifications and the actual price bid by the vendor will be calculated and that percentage discount shall be applied to any options an individual county may choose to add to the machine.

Once the bids have been awarded, any county participant purchasing under this program may, at its discretion, add any of the vendor's available options at the same discount off the Manufacturer's Suggested Retail Price Sheet as was applied to the Standard Machine Price Bid.

Any use of specific names and/or model numbers in the attached specifications is not intended to restrict the bidder or any seller or manufacturer, but is included solely for the purpose of indicating the type, size, and quality of materials, product services, or equipment considered best adapted to the use of the counties participating in the joint bid program.

ACQUISITION AND FINANCING OPTIONS

The awarded Vendor will provide the equipment, including any options required by the purchaser, at the awarded price as contracted through the Joint Bid Program. The purchaser may secure its own financing to acquire the equipment or execute any financial options available under Alabama law with the awarded Vendor in order to acquire the equipment.

BIDDER QUALIFICATIONS

All bidders and all program participants must be in compliance with any applicable federal, state, county and municipal laws, regulations, resolutions and ordinances, including but not limited to, licensing, permitting, and taxation requirements. All bidders should be prepared to submit evidence or documentation as proof that they are properly licensed and permitted under any applicable laws upon request. Such evidence or documentation may be submitted with the bid. Additionally, all bidders shall provide proof that they are in compliance with the e-verify requirements of Alabama's Immigration Law (Ala. Code § 31-13-1 et seq., as amended by Act No. 2012-491).

BID AWARD

The Houston County Commission will serve as the awarding authority for all bids and will award all contracts at a regular meeting of the Houston County Commission. Any and all bids submitted in compliance with this invitation to bid shall be considered, and award will be made to the lowest responsible bidder meeting bid specifications as determined by the awarding authority in compliance with Alabama law. All bids will be reviewed and evaluated by a committee created for that purpose, which committee will make comments and recommendations to the awarding authority regarding the award. All factors contained in each invitation package will be evaluated in determining the successful bidder, and any omissions of the stated requirements may be cause for rejection of the bid submitted. The awarding authority reserves the

right to reject any and all bids, to waive any informality in bids, and to accept in whole or in part such bid or bids solely at its discretion.

The contract period will be one year with an option to renew for a second and third year under identical price, terms, and conditions upon the mutual consent of the vendor and the awarding authority. Any renewal contract shall be approved in writing by the vendor and the awarding authority no later than 90 days prior to the expiration of the existing contract.

CONTACT REGARDING BIDS AND INVITATION

Contact initiated by a potential bidder with any county official, county employee, or member of the Association staff shall only be as specifically set out in this Invitation to Bid. Any questions related to the bid or the County Joint Bid Program shall be directed to Association staff in writing under the procedures set out in this Invitation to Bid. Additionally, a bidder may contact the Association in writing to request an appointment to review bid specifications following the bid opening. **However, there shall be no communication with any county official or county employee regarding this bid between the date of this invitation and the date of bid award.** Any contact other than as set out here shall be deemed as an attempt to unduly influence the bid award, and shall be grounds for rejection of the bid submitted by the bidder initiating such other contact.

Any questions or problems related to downloading or obtaining copies of this Invitation to Bid should be directed to **Kenya Howard** at jointbid@alabamacounties.org or **334-263-7594**.

Any other questions or requests for additional information regarding this invitation or the bid specifications shall be submitted **in writing** no later than five (5) days prior to bid opening to:

ATTN: Patrick McDougald
Association of County Commissions of Alabama
P.O. Box 5040
Montgomery, Alabama 36104

OR

Patrick McDougald
E-mail: barbeng@bellsouth.net

Technical data

HP 180i



Pneumatic tire rollers Series HP

H250

Pneumatic tire roller

HIGHLIGHTS

- > Intelligent ballasting concept for flexible adjustment of the machine weight to the application
- > Seat-operating unit can be moved and rotated
- > High compaction and surface quality due to even weight distribution and tire overlap of the front and rear wheel pairs
- > Simple, intuitive and language-neutral control
- > Excellent view of tires, machine and construction site

TECHNICAL DATA HP 180i (H250)

Weights		
Operating weight with cab	kg lbs	8515 18,776
Operating weight with ROPS	kg lbs	8265 18,224
Basic weight no cab, without ROPS	kg lbs	7295 16,085
Operating weight, max.	kg lbs	18310 40,374
French classification min., value/category		11,3/PLO
French classification max. value/category		21,6/P0
Min. wheel load per tire, front/rear	kg lbs	1000/1129 2,205/2,489
Max. wheel load per tire, front/rear	kg lbs	2160/1969 4,763/4,342
Machine dimensions		
Total length	mm in	4970 195.7
Total height with cab	mm in	3000 118.1
Total height with ROPS	mm in	2986 117.6
Height, loading, min.	mm in	2320 91.3
Wheelbase	mm in	3900 153.5
Total width with cab	mm in	2166 85.3
Max. working width	mm in	2084 82.0
Ground clearance, center	mm in	300 11.8
Turning radius, inside	mm in	6200 244.1
Wheel dimensions		
Size of tires, front/rear		11.00-R20/11.00-R20
Width over tires, front/rear	mm in	1830/1830 72.0/72.0
Number of tires, front/rear		4/4
Diesel engine		
Manufacturer		DEUTZ
Type		TCD 3.6 L4
Number of cylinders		4
Power rat. ISO 14396, kW/PS/rpm		55,4/75,3/2200
Emission standard		EU Stage V / EPA Tier 4
Exhaust gas after-treatment		DOC-DPF
Drive		
Speed, infinitely variable	km/h mph	0-15,0 0.0-9.3
Regulation, infinitely variable		Hammtronic

Drive		
Climbing ability, with/no ballast	%	25/35
Steering		
Oscillation angle +/-	°	2
Steering, type		Two-point steering
Sprinkler system		
Water sprinkler, type		Pressure
Tank capacity/Fill capacity		
Fuel tank, capacity	L Gal	235 62.1
Water tank, capacity	L Gal	650 171.7
Additive tank, capacity	L Gal	28 7.4
Sound level		
Sound power level L(WA), guaranteed	db(A)	101
Acoustic power LW(A), measured	db(A)	98

EQUIPMENT

12 V outlets (double) | 2 large working and rear view mirrors | Dashboard with displays, indicator lights and function key | Tilttable dashboard | Operating concept Easy Drive | Pressure water sprinkling with interval switch | ECO mode | Operator's platform with entry from both sides | Speed-controlled water sprinkling system | Leveling of front wheelset | Maintenance platform | Spray system with spray bars front and rear | Water filtering (triple) | Water tank at front | Central water drain | Lighting package as per road traffic regulations

OPTIONAL EQUIPMENT

Machine with 10 tons operating weight and additional water tank | Brush scraper, collapsible | ROPS cabin with split doors | Heating and air conditioning | Seat operating unit, sideways adjustable and rotatable | Tachograph | HCQ navigator | Dashboard cover | Protective roof | Edge pressing and cutting equipment | HAMM Temperature Meter (HTM) | Telematics interface | Working light | Rotating beacon | Coming home lighting | Battery isolating switch | Tool kit



Machine equipment

Pos.	Material No.	Description	USD
0010	H25000	HP 180i Pneumatic-tire roller	173,800.00
0020		Country of operation United States	173,800.00
0030	2870589	Machine weight class: 10 sh. tn. (US)	AM
0040	2757061	Hydraulics package, standard	
0050	2352823	1 x set of wheels with smooth tires	
0060	2611578	Scraper made from brushes, folding	
0070	2142271	Standard painting (RAL 2004 + RAL 7015)	
0080	2627079	Version with CE conformity	
0090	2076768	Warning labels according to ANSI	
0100	2606839	Display of units of measurement, US system of measurement	
0110	2571290	Electrics package, standard	
0120	2746435	ROPS, rigid	
0130	2382546	Driver's seat in black imitation leather	
0140	2515837	Steering unit, standard	
0150	2471424	Multifunction armrest, right, folding	
0160	2470057	Steering column with comfort exit and tiltable dashboard	
0170	2400726	Seat operating unit, adjustable sideways and rotatable	
0180	2517500	Lighting package for driving on public roads	
0190	2611637	Version without ASC (anti-slip control)	
0200	2142336	Hydraulic oil	
0210	2478579	English spare parts and application documentation (EN)	
0220	2478472	Technical documentation – North America country version (US)	
0230	2082887	Backrest extension for driver's seat, black imitation leather	
0240	2382555	Armrest comfort setting, left	
0250	2638975	Dashboard cover, lockable	
0260	2579429	Plastic protective roof on ROPS or folding mechanism	
0270	2630523	Automatic engine stop	
0280	2478189	Back-up alarm	
0290	2764783	WITOS (MF3, 4G) – professional telematics solution for machine operation and service optimization	
0300	2478192	Preparation for work spotlights or rotating beacon	
0310	2599711	Lunch box holder	

Machine equipment

Pos.	Material No.	Description	USD
0320	2478196	Guard rail on maintenance platform	
0330	2478197	Seat length adjustment	
0340	2478198	Side step to the water tank, folding	

Totals

Total standard equipment	USD 130,800.00
Total optional equipment	USD 0.00
Final total machine	USD 130,800.00
Number of machines	1
Final price machines	USD 130,800.00
Freight	USD
Total overall final price	USD 130,800.00
Sales tax	USD
Sales tax	%
Quotation price	USD 130,800.00

Incoterm

FOB Port of Entry US, Incoterms 2020

Terms of delivery

F.O.B. Port of Entry US.

Terms of Payment

Net 30 days.



Warranty Terms

12 months or 1000 hours whichever occurs first.

General Terms and Conditions

Available upon request or shown on our website.

Validity

90 days.

CLOSE TO OUR CUSTOMERS

TRACTOR & EQUIPMENT CO.
3305 HIGHWAY 77
PANAMA CITY, FL 32405

Wirtgen America Inc

6030 Dana Way
Antioch, TN 37013
United States

Phone: +1 615.501.0600

Fax: +1 615.501.0691

Email: sales.america@wirtgen-group.comWebsite: <https://www.wirtgen-group.com/contact>

Contact person: Andy Guth

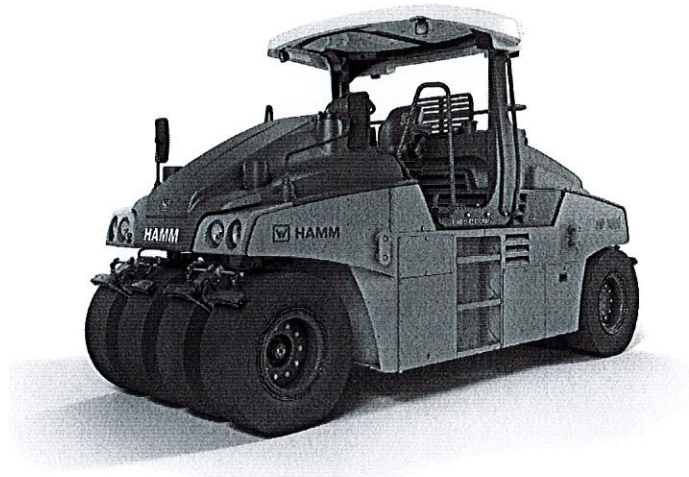
Mobile:

Email: andy.guth@wirtgen-group.com

Print date 10/05/2022**Quotation No.: 0042-0004025229-20221005-174532/00**

ACCA bid, price is good for Calendar year 2023.

HP 180i



The configured machine may differ from the machine illustrated.

HP 180i Pneumatic-tire roller

- ▶ Simple, intuitive and language-neutral operation
- ▶ Excellent view of the tires, machine and site
- ▶ Electronic machine management HAMMTRONIC
- ▶ Intelligent ballasting concept for flexibly adjusting the machine weight to the application
- ▶ High compaction and surface quality thanks to even weight distribution and tire overlap of the front and rear wheel pairs

Maximum working width	82 in
Axle load, front/rear	8.820/9.956 lbs
Operating weight with cab	18.776 lbs
Power ISO 14396, kW/PS/rpm	55,4/75,3/2200

Information Required for the E-Verify Program	
Information relating to your Company:	
Company Name	Tractor & Equipment Co Inc
Company Facility Address	5336 Messer Airport Highway Birmingham, AL 35212
Company Alternate Address	PO Box 12326 Birmingham, AL 35202
County or Parish	Jefferson
Employer Identification Number	63-0211767
North American Industry Classification Systems Code	Merchant Wholesalers, Durable Goods (423)
Parent Company	
Number of Employees	500 to 999
Number of Sites Verified for	22