

**BID SUBMITTAL FORM**  
**Alabama County Joint Bidding Program**  
**Heavy Equipment – Bid Item: Track Mount Excavator Option A-3**

Company Name: THOMPSON TRACTOR COMPANY

Address: P.O. BOX 10367

BIRMINGHAM, AL 35202-0367

Bid Submitted by: JAY SMITH

(Name of company representative)

Title: SALES OPERATIONS MANAGER E-mail address: JAYSMITH@THOMPSONTRACTOR.COM

Phone: (205) 849-4242 Fax: \_\_\_\_\_

By submitting this bid, we agree:

The equipment model number identified below meets the bid specs for this bid item

Initials

JAS

That the bid price will be honored for all counties for the period from January 1, 2023 to December 31, 2023.

JAS

The equipment will be delivered at the bid price to all counties participating in the joint bid program.

JAS

The company acknowledges the freight preparation and delivery price is to be included in the total bid price for the standard machine.

JAS

The company representative listed above will be the contact person for purchasing this bid item under the joint bid program.

JAS

The bid is accompanied by a current catalog or model specification document for the model number identified below.

JAS

The bid is accompanied by a copy of the manufacturer's standard warranty as required in the bid specifications.

JAS

The bid includes the e-verify documentation required by Alabama law.

JAS

If awarded the bid, a performance bond will be provided upon request.

JAS

The bid documents include the **Manufacturer's Suggested Retail Price Sheet (MSRP) for the Standard Machine.**

JAS

Total Bid Price for Standard Machine: \$ 354,125  
(Total Bid Price for Standard Machine Includes Freight Preparation, Delivery and Standard Warranty Costs) \*

Freight Preparation and Delivery: \$ 9,294  
(Included in Standard Machine Bid Price)

Manufacturer's Suggested Retail Price for Standard Machine: \$ 439,275

Equipment Model #: CATERPILLAR 330

Description: HYDRAULIC EXCAVATOR

Signature of company representative submitting bid: 

Title: SALES OPERATIONS MANAGER

**\*NOTE:** Award will be made based on the total cost of the **Standard Machine**. The total cost of the standard machine is to include the freight preparation, delivery and standard warranty cost. Freight preparation, delivery will be excluded from the total bid price of the standard machine in determining the percentage discount for any available options.

## BID SUBMITTAL FORM: OPTION COST SHEET

By submitting this bid, we agree:

To offer any available options at the percent difference between the Manufacturer's Suggested Retail Price Sheet and the actual bid price on the Standard Machine\*

JAF

The bid documents include the **Manufacturer's Suggested Retail Price Sheet (MSRP)** for the Standard Machine

JAF

Equipment Model #: CATERPILLAR 330

Description: HYDRAULIC EXCAVATOR

Signature of company representative submitting bid: \_\_\_\_\_

Jay Sweet

Title: SALES OPERATIONS MANAGER

**\*NOTE:** The percent difference between the **Manufacturer's Suggested Retail Price Sheet (MSRP)** for the standard machine as specified by these **Bid Specifications** and the actual price bid by the vendor will be calculated to determine the percentage discount to be applied to any available options. The bid price of the freight preparation, delivery cost shall be excluded in determining the percentage discount to be applied to available options. Any individual county may choose to add any available option to the standard machine at the percentage discount at the time of purchase.

# BID SPECIFICATIONS FOR TRACK-MOUNTED EXCAVATOR - OPTION A-3

## GENERAL

These specifications shall be construed as the minimum acceptable standards for a track mounted hydraulic excavator with long undercarriage. Should the manufacturer's current published data or specifications exceed these standards, the manufacturer's standards shall be considered minimum and shall be furnished. All integral parts not specifically mentioned in the scope of these specifications that are necessary to provide a complete working unit shall be furnished. Additionally, the machine offered for bid shall include all standard manufacturers' equipment. The excavator must be a new current production model and shall meet or exceed all EPA and other applicable standards at the time of manufacture.

Use of specific names and numbers in the specifications is not intended to restrict the bidder or any seller or manufacturer, but is intended solely for the purpose of indicating the type, size and quality of equipment considered best adapted to the uses of the counties participating in this joint bid.

## BID SUBMITTAL FORM

Each bidder must submit his or her bid on the bid submittal form included in the invitation to bid package. All written warranties to be submitted shall be attached to the bid submittal form.

## BID PRICE

The price bid shall include all destination charges, delivery charges, title fees, rebates, and all other applicable costs and refunds.

## MANUALS

Each unit shall be provided with one (1) copy of the operator's manual, one [1] repair manual, and one (1) copy of the current parts manual. Units will not be accepted for delivery until the manuals as outlined above are received by the purchaser.

## REPLACEMENT PARTS AVAILABILITY

Parts must be available for 5 years or 7,500 hours of use for the piece of equipment. If any replacement parts are not delivered within three (3) working days of an order being placed, the bidder will deliver an equivalent machine for the county to use at no cost to the county until such time as the parts are delivered to the county so it can affect repairs to its machine.

## WARRANTY

Bidders shall submit a copy of the manufacturer's standard warranty. Warranty shall include service response time of maximum of 36 hours within notification by county.

Yes  No   
Page# \_\_\_\_\_  
or  
Attachment



**WEIGHT**

Minimum 66,000 lbs. equipped with minimum 31 inch wide track shoes.

Yes  No   
Page # 2

**ENGINE**

Turbocharged, 6 cylinders with a minimum 400 cubic inch displacement diesel engine capable of a minimum 260 net horsepower.

Yes  No   
Page # 2

Engine shall be manufactured by the equipment manufacturer.

Yes  No   
Page # 2

**SWING MECHANISM**

Maximum Swing Torque shall be a minimum of 70,000 lbf-ft.

Yes  No   
Page # 2

**UNDERCARRIAGE**

Track length shall be minimum 15' 11".

Yes  No   
Page # 4

Undercarriage Width shall be minimum 11'.

Yes  No   
Page # 4

Track shoe width shall be minimum 31" (Triple grouser Shoes)

Yes  No   
Page # 4

Minimum nine (9) track rollers per side.

Yes  No   
Page # 2

Minimum two (2) carrier rollers per side.

Yes  No   
Page # 2

**STARTING SYSTEM**

24 volt system with a minimum 115 amp alternator.

Yes  No   
Page # 17

**CAPACITIES**

Fuel Tank Capacity – 125 gallon minimum

Yes  No   
Page # 2

Hydraulic Tank Capacity – 35 gallon minimum

Yes  No   
Page # 2

Engine Coolant – 6 gallon minimum

Yes  No   
Page # 2

**BUCKET WILL BE CONSIDERED OPTIONAL EQUIPMENT-SIZE AND TYPE WILL BE DETERMINED BY THE COUNTY AT THE TIME AN ORDER IS PLACED.**

**BOOM AND STICK**

One piece boom with minimum 20' length

Yes  No   
Page # 4

Stick shall be a minimum 10'2" long

Yes  No   
Page # 4

**DIMENSIONS**

Reach at ground level – 35' minimum

Yes  No   
Page # 5

Bucket breakout force (SAE) – minimum 40,000 lbs.

Yes  No   
Page # 5

Stick digging force (SAE) – minimum 27,500 lbs.

Yes  No   
Page # 5

**HYDRAULICS**

Hydraulic pump output shall be a minimum of 140 GPM

Yes  No   
Page # 2

**CAB**

Enclosed ROPS cab:

Yes  No   
Page # 2, 16

Heater

Yes  No   
Page # 16

Factory installed air conditioning

Yes  No   
Page # 16

AM/FM radio

Yes  No   
Page # 16

Suspension seat

Yes  No   
Page # 16

Defroster

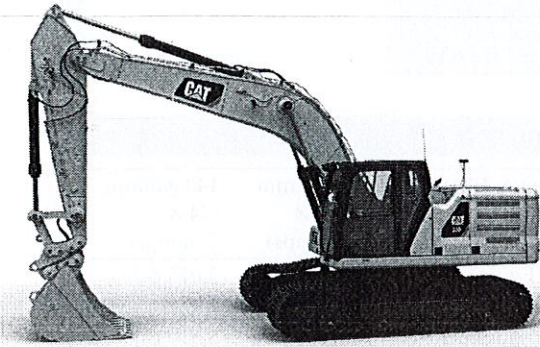
Yes  No   
Page # 16

Shall be equipped with a 12-volt converter capable of powering a two-way radio.

Yes  No   
Page # 16

330	TRACK-MOUNTED HYDRAULIC EXCAVATOR OPTION A3	2023 Pricing
628-8549	330-07A EXCAVATOR DCA1K INCLUDES: 516-8524 330 07 HEX 628-6898 COMMON ARRANGEMENT 134-8883 GUARD, SWIVEL 321-0150 LINES-QC, R3.2M STICK (106") 339-7054 BLOCK HEATER, 120V 346-7150 GUARD, TRACK GUIDING, SEGMENTED 484-8021 WIPER, RADIAL W/O LOWER 490-7715 PEDAL, STRAIGHT TRAVEL 502-7166 INTEGRATED RADIO, W/O DAB 507-4840 FRAME, UPPER 511-9428 MONITOR, 10" 513-3214 SENSOR, PRESSURE, EOU 514-7013 GUARD, TRAVEL MOTOR, HD 516-0550 GRADE W/2D, ASSIST&PAYLOAD 516-5100 COLD STARTING, ETHER 516-5832 CYLINDER, STICK 516-5840 CYLINDER, BKT, CB2 516-7688 LINES, QC, REACH BOOM 516-8457 CYLINDER, BOOM 516-8510 BATTERIES, 4 516-8550 BOOM TUBE W/EOU 516-8566 STICK, R3.2M (106") 516-8657 TRACK, 800MM TG (31") 517-4758 CONTROL, QC 519-6977 GRADE SENSOR, REACH BOOM 519-6978 GRADE SENSOR, R3.2M STICK (106") 520-1923 VALVE, FINE SWING 520-9418 FILM, OPERATING PATTERN, 2WAY 521-8015 LINKAGE, BKT CB2 W/EYE GRADE 524-8272 RECEIVER, BLUETOOTH 525-7678 MACHINE ECM 528-4738 FILM, EMC 528-6835 JOYSTICKS, VERTICAL SLIDER 549-9535 LINES, DRAIN, PQC 555-7286 NETWORK MANAGER, STD 567-3815 FILM, STICK WARNING, ANSI 567-3818 FILM, ROPS 573-4351 FILM, INTERIOR, ANSI 575-2677 COUNTERWEIGHT, 6.7MT (14,770LB) 576-9456 GUARD, BOTTOM HD 576-9461 STORAGE TRAY 577-3907 LIGHT, CHASSIS 577-5867 BOOM, REACH 6.15M (202") 577-6543 LIGHT, REACH BOOM LH & SLR LH 577-6544 LIGHT, REACH BOOM & SLR RH 577-7867 LINES, A/C 577-8973 LIGHTS, CAB, W/RAIN PROTECTOR 578-2910 FILM, EXTERIOR, ANSI 578-2915 QUICK DRAINS READY 578-7636 CAMERA, 360 VISIBILITY 580-8628 MIRROR, CAB, W/O GUARD 589-1744 RADIO MODULE, PL243 CELLULAR 592-8316 TRAVEL, ALARM 593-4943 UNDERCARRIAGE, LONG 594-2025 WIRING, PRODUCT LINK ELITE 597-0945 HYDRAULIC PKG, NO TOOL W/HL - UPPER COVER, CENTER - VALVE, HYDRAULIC, HL - LINES, MAKE-UP, STD - RETURN PIPE, STD 609-5081 CAB, DELUXE 620-8844 SWIVEL, W/SWING SENSOR	\$439,275
	<b>TOTAL BID PRICE FOR STANDARD MACHINE</b>	<b>\$354,125</b>
	<b>FREIGHT PREPARATION AND DELIVERY</b>	<b>\$9,294</b>
	<b>TOTAL MANUFACTURER'S SUGGESTED RETAIL PRICE FOR STANDARD MACHINE</b>	<b>\$439,275</b>





# 330

## Hydraulic Excavator

# Technical Specifications

Configurations and features may vary by region. Please consult your Cat® dealer for availability in your area.

### Table of Contents

<b>Specifications</b> .....	<b>2</b>
Engine .....	2
Swing Mechanism .....	2
Weights .....	2
Track .....	2
Drive .....	2
Hydraulic System .....	2
Service Refill Capacities .....	2
Standards .....	2
Sound Performance .....	2
Operating Weights and Ground Pressures .....	3
Major Component Weights .....	3
Dimensions .....	4
Working Ranges and Forces .....	5
Reach Boom Lift Capacities – Counterweight: 6700 kg (14,770 lb) .....	6
SLR Boom Lift Capacities – Counterweight: 6700 kg (14,770 lb) .....	10
Bucket Specifications and Compatibility .....	12
Attachments Offering Guide .....	14
<b>Standard and Optional Equipment</b> .....	<b>16</b>
<b>Dealer Installed Kits and Attachments</b> .....	<b>19</b>



# 330 Hydraulic Excavator Specifications

## Engine

Engine Model	Cat® C7.1	
Engine Power – ISO 9249	204 kW	273 hp
Engine Power – ISO 14396	205 kW	275 hp
Bore	105 mm	4 in
Stroke	135 mm	5 in
Displacement	7.01 L	428 in <sup>3</sup>

- Meets U.S. EPA Tier 4 Final, EU Stage V, and Japan 2014 emission standards.
- Recommended for use up to 4500 m (14,760 ft) altitude with engine power derate above 3000 m (9,840 ft).
- Net power advertised is the power available at the flywheel when the engine is equipped with fan, air cleaner, muffler, and alternator.
- Rating at 2,200 rpm.

## Swing Mechanism

Swing Speed	11.50 rpm	
Maximum Swing Torque	110 kN·m	81,132 lb-ft

## Weights

Operating Weight – 800 mm (31") Triple Grouser Shoes	30 900 kg	68,100 lb
--	-----------	-----------

- Long undercarriage, reach boom, R3.2 m (10'6") stick, HD 1.76 m<sup>3</sup> (2.30 yd<sup>3</sup>) bucket, 800 mm (31") triple grouser shoes and 6700 kg (14,770 lb) counterweight.

## Track

Standard Track Shoes Width	800 mm	31 in
Optional Track Shoes Width	600 mm	24 in
Optional Track Shoes Width	700 mm	28 in
Number of Shoes (each side)	50	
Number of Track Rollers (each side)	9	
Number of Carrier Rollers (each side)	2	

## Drive

Maximum Gradeability	35°/70%	
Maximum Travel Speed	5.3 km/h	3.3 mph
Maximum Drawbar Pull	248 kN	55,753 lbf

## Hydraulic System

Main System – Maximum Flow – Implement	560 L/min (280 × 2 pumps)	148 gal/min (74 × 2 pumps)
Maximum Pressure – Equipment – Normal	35 000 kPa	5,075 psi
Maximum Pressure – Equipment – Lift Mode	38 000 kPa	5,510 psi
Maximum Pressure – Travel	35 000 kPa	5,075 psi
Maximum Pressure – Swing	29 800 kPa	4,320 psi
Boom Cylinder – Bore	140 mm	6 in
Boom Cylinder – Stroke	1407 mm	55 in
Stick Cylinder – Bore	150 mm	6 in
Stick Cylinder – Stroke	1646 mm	65 in
Bucket Cylinder – Bore	135 mm	5 in
Bucket Cylinder – Stroke	1156 mm	46 in

## Service Refill Capacities

Fuel Tank Capacity	474 L	125.2 gal
Cooling System	25 L	6.6 gal
Engine Oil	25 L	6.6 gal
Swing Drive	10 L	2.6 gal
Final Drive (each)	5.5 L	1.5 gal
Hydraulic System (including tank)	310 L	81.9 gal
Hydraulic Tank	147 L	38.8 gal
DEF Tank	41 L	10.8 gal

## Standards

Brakes	ISO 10265:2008
Cab/ROPS	ISO 12117-2:2008
Cab	ISO 10262-1:1998
FOGS (optional)	ISO 10262-2:1998

## Sound Performance

ISO 6395 (external)	103 dB(A)
ISO 6396 (inside cab)	70 dB(A)

- Hearing protection may be needed when operating with an open operator station and cab (when not properly maintained or doors/windows open) for extended periods or in a noisy environment.



# 330 Hydraulic Excavator Specifications

## Operating Weights and Ground Pressures

	800 mm (31") Triple Grouser Shoes		700 mm (28") HD Triple Grouser Shoes		600 mm (24") Single Grouser Shoes	
	Weight	Ground Pressure	Weight	Ground Pressure	Weight	Ground Pressure
	kg (lb)	kPa (psi)	kg (lb)	kPa (psi)	kg (lb)	kPa (psi)
<b>Base machine with 6700 kg (14,770 lb) Counterweight and Long Undercarriage</b>						
Reach Boom + R3.2CB2 (10'6") Stick + 1.76 m <sup>3</sup> (2.30 yd <sup>3</sup> ) HD Bucket	30 900 (68,100)	44 (6.4)	30 500 (67,300)	50 (7.2)	30 200 (66,600)	57 (8.3)
Reach Boom + R3.75CB2 (12'4") Stick + 1.76 m <sup>3</sup> (2.30 yd <sup>3</sup> ) HD Bucket	31 100 (68,600)	44 (6.4)	30 700 (67,700)	50 (7.3)	30 400 (67,000)	58 (8.4)
Super Long Reach Boom + SLR 7.85A (25'9") Stick + 0.57 m <sup>3</sup> (0.75 yd <sup>3</sup> ) DC Bucket	30 900 (68,200)	44 (6.4)	30 600 (67,300)	50 (7.2)	30 200 (66,600)	57 (8.3)

All operating weights include a 90% fuel tank with 75 kg (165 lb) operator.

## Major Component Weights

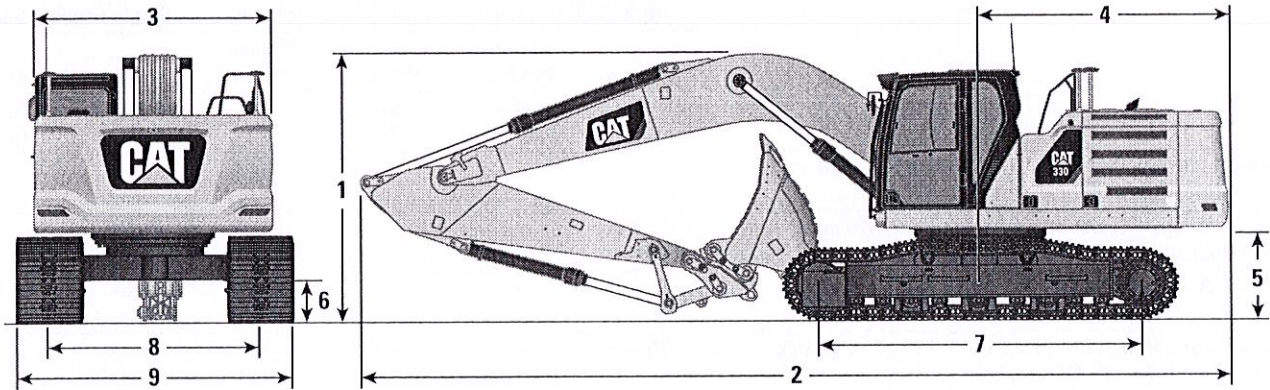
	kg	lb
Base machine (6700 kg [14,770 lb] counterweight, upper frame, long undercarriage with HD rollers) with boom cylinders and weight of 90% fuel tank and 75 kg (165 lb) operator included.	21 200	46,700
<b>Track Shoes:</b>		
800 mm (31") Width, 13 mm (0.51") Thick, Triple Grouser Track Shoes with Step Extension for ISO 2867	4590	10,120
700 mm (28") Width, 13 mm (0.51") Thick, HD Triple Grouser Track Shoes	4200	9,260
600 mm (24") Width, 15 mm (0.59") Thick, Single Grouser Track Shoes	3890	8,580
Two Boom Cylinders	490	1,080
Weight of 90% Fuel Tank and 75 kg (165 lb) Operator	460	1,010
<b>Counterweight:</b>		
6700 kg (14,770 lb) Counterweight	6700	14,770
<b>Undercarriage:</b>		
Long Undercarriage with HD Rollers	6700	14,800
<b>Booms (including lines, pins, stick cylinder):</b>		
Reach Boom 6.15 m (20'2")	2310	5,090
Super Long Reach Boom 10.2 m (33'6")	3200	7,050
<b>Sticks (including lines, pins, bucket cylinder, bucket linkage):</b>		
Reach Stick R3.2CB2 (10'6")	1470	3,240
Reach Stick R3.75CB2 (12'4")	1660	3,660
Super Long Reach Stick 7.85A (25'9")	1560	3,440
<b>Buckets (without linkage, with tips and sidecutters):</b>		
0.91 m <sup>3</sup> (1.19 yd <sup>3</sup> ) HD, CB Linkage	990	2,190
1.12 m <sup>3</sup> (1.46 yd <sup>3</sup> ) HD, CB Linkage	1090	2,400
1.33 m <sup>3</sup> (1.74 yd <sup>3</sup> ) HD, CB Linkage	1160	2,560
1.54 m <sup>3</sup> (2.01 yd <sup>3</sup> ) HD, CB Linkage	1260	2,780
1.76 m <sup>3</sup> (2.30 yd <sup>3</sup> ) HD, CB Linkage	1350	2,980
0.57 m <sup>3</sup> (0.75 yd <sup>3</sup> ) DC, A Linkage	390	860
<b>Quick Couplers:</b>		
Pin Grabber QC CB with Pins	530	1,170
Pin Grabber QC CB without Pins	500	1,100
Dedicated QC	430	950



# 330 Hydraulic Excavator Specifications

## Dimensions

All dimensions are approximate and may vary depending on bucket selection.



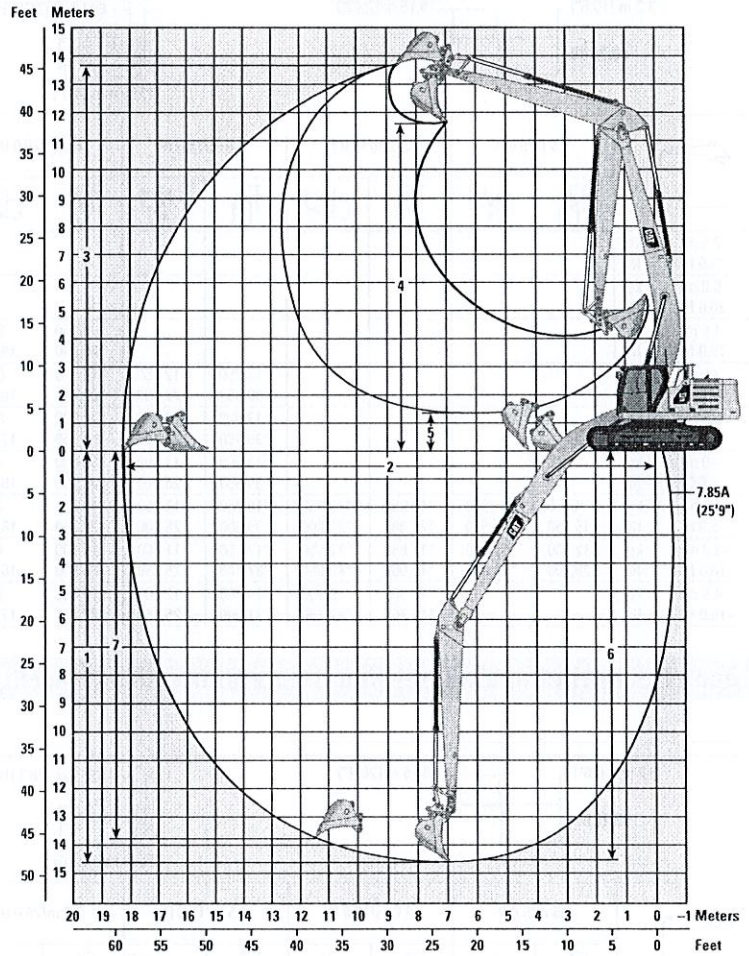
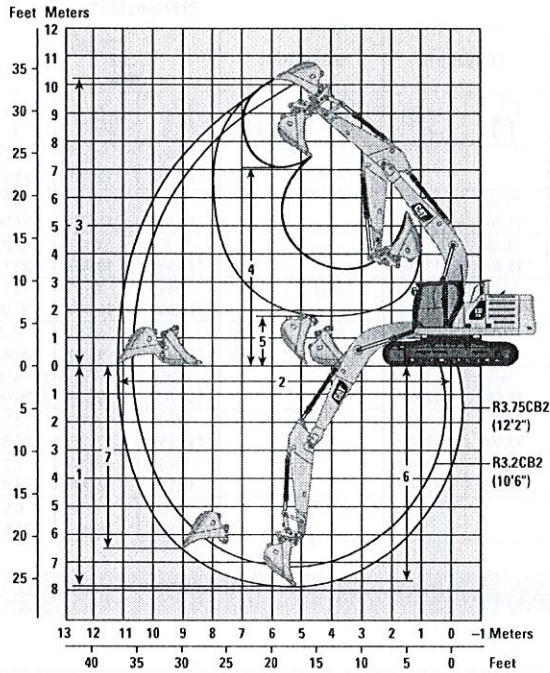
Boom Options	Reach Boom 6.15 m (20'2")		SLR Boom 10.2 m (33'6")			
	Reach Stick		SLR Stick 7.85A (25'9")			
Stick Options	R3.2CB2 (10'6")		R3.75CB2 (12'4")		7.85A (25'9")	
<b>1 Machine Height:</b>						
Cab Height	3060 mm	10'0"	3060 mm	10'0"	3060 mm	10'0"
FOGS Height	3200 mm	10'6"	3200 mm	10'6"	3200 mm	10'6"
Handrails Height	3060 mm	10'0"	3060 mm	10'0"	3060 mm	10'0"
With Boom/Stick/Bucket Installed	3400 mm	11'2"	3700 mm	12'2"	3230 mm	10'7"
With Boom/Stick Installed	3380 mm	11'1"	3700 mm	12'2"	3230 mm	10'7"
With Boom Installed	3060 mm	10'0"	3060 mm	10'0"	3060 mm	10'0"
<b>2 Machine Length:</b>						
With Boom/Stick/Bucket Installed	10 420 mm	34'2"	10 420 mm	34'2"	14 480 mm	47'6"
With Boom/Stick Installed	10 420 mm	34'2"	10 420 mm	34'2"	14 480 mm	47'6"
With Boom Installed	9230 mm	30'3"	9230 mm	30'3"	13 390 mm	43'11"
<b>3 Upperframe Width without Walkways</b>						
	2940 mm	9'8"	2940 mm	9'8"	2940 mm	9'8"
<b>4 Tail Swing Radius</b>						
	3130 mm	10'3"	3130 mm	10'3"	3130 mm	10'3"
<b>5 Counterweight Clearance</b>						
	1120 mm	3'8"	1120 mm	3'8"	1120 mm	3'8"
<b>6 Ground Clearance</b>						
	490 mm	1'7"	490 mm	1'7"	490 mm	1'7"
<b>7 Track Length – Length to Center of Rollers</b>						
	3990 mm	13'1"	3990 mm	13'1"	3990 mm	13'1"
<b>8 Track Gauge – Extended</b>						
	2590 mm	8'6"	2590 mm	8'6"	2590 mm	8'6"
<b>Track Width:</b>						
600 mm (24") Shoes	600 mm	24"	600 mm	24"	600 mm	24"
700 mm (28") Shoes	700 mm	28"	700 mm	28"	700 mm	28"
800 mm (31") Shoes	800 mm	31"	800 mm	31"	800 mm	31"
<b>9 Undercarriage Width (with steps/without steps):</b>						
600 mm (24") Shoes	3190 mm	10'6"	3190 mm	10'6"	3190 mm	10'6"
700 mm (28") Shoes	3290 mm	10'10"	3290 mm	10'10"	3290 mm	10'10"
800 mm (31") Shoes	3390 mm	11'1"	3390 mm	11'1"	3390 mm	11'1"
Bucket Type	HD		HD		DC	
Bucket Capacity	1.76 m <sup>3</sup>	2.30 yd <sup>3</sup>	1.76 m <sup>3</sup>	2.30 yd <sup>3</sup>	0.57 m <sup>3</sup>	0.75 yd <sup>3</sup>
Bucket Tip Radius	1660 mm	5'5"	1660 mm	5'5"	1090 mm	3'7"



# 330 Hydraulic Excavator Specifications

## Working Ranges and Forces

All dimensions are approximate and may vary depending on bucket selection.



### Boom Options

Reach Boom  
6.15 m (20'2")

SLR Boom  
10.2 m (33'6")

### Stick Options

Reach Stick

SLR Stick

R3.2CB2 (10'6")

R3.75CB2 (12'4")

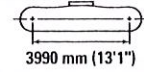
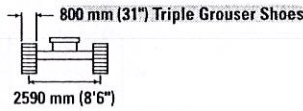
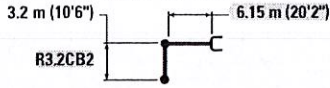
7.85A (25'9")

	Reach Boom 6.15 m (20'2")		SLR Boom 10.2 m (33'6")			
	Reach Stick		SLR Stick			
	R3.2CB2 (10'6")	R3.75CB2 (12'4")	7.85A (25'9")			
1 Maximum Digging Depth	7240 mm	23'9"	7790 mm	25'7"	14 610 mm	47'11"
2 Maximum Reach at Ground Line	10 680 mm	35'0"	11 190 mm	36'9"	18 290 mm	60'0"
3 Maximum Cutting Height	10 030 mm	32'11"	10 210 mm	33'6"	13 590 mm	44'7"
4 Maximum Loading Height	6950 mm	22'10"	7140 mm	23'5"	11 560 mm	37'11"
5 Minimum Loading Height	2300 mm	7'7"	1750 mm	5'9"	1310 mm	4'4"
6 Maximum Depth Cut for 2440 mm (8 ft) Level Bottom	7090 mm	23'3"	7650 mm	25'1"	14 500 mm	47'7"
7 Maximum Vertical Wall Digging Depth	6010 mm	19'9"	6450 mm	21'2"	13 830 mm	45'4"
Bucket Digging Force (ISO)	179 kN	40,240 lbf	179 kN	40,240 lbf	60 kN	13,490 lbf
Stick Digging Force (ISO)	126 kN	28,330 lbf	114 kN	25,630 lbf	45 kN	10,120 lbf
Bucket Type	HD		HD		DC	
Bucket Capacity	1.76 m <sup>3</sup>	2.30 yd <sup>3</sup>	1.76 m <sup>3</sup>	2.30 yd <sup>3</sup>	0.57 m <sup>3</sup>	0.75 yd <sup>3</sup>
Bucket Tip Radius	1660 mm	5'5"	1660 mm	5'5"	1090 mm	3'7"



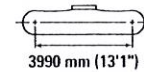
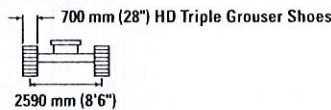
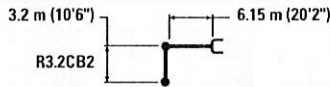
# 330 Hydraulic Excavator Specifications

## Reach Boom Lift Capacities – Counterweight: 6700 kg (14,770 lb) – without Bucket, Heavy Lift: On



Reach Boom Configuration	1.5 m/5.0 ft		3.0 m/10.0 ft		4.5 m/15.0 ft		6.0 m/20.0 ft		7.5 m/25.0 ft		9.0 m/30.0 ft		m ft		
	kg	lb	kg	lb	kg	lb	kg	lb	kg	lb	kg	lb	kg	lb	
7.5 m 25.0 ft													*5600 *12,350	*5600 *12,350	7.28 24.17
6.0 m 20.0 ft									*7900 *16,700	6450 13,800			*5350 *11,750	*5350 *11,750	8.24 27.50
4.5 m 15.0 ft							*9250 *20,050	8800 19,000	*8400 *18,300	6300 13,550			*5300 *11,650	4900 10,800	8.83 29.17
3.0 m 10.0 ft					*14 250 *30,650	12 850 27,700	*10 800 *23,400	8450 18,200	*9150 *19,900	6150 13,200	*6500 4700		*5450 *11,950	4550 10,050	9.14 30.00
1.5 m 5.0 ft					*17 000 *36,700	12 150 26,150	*12 300 *26,550	8100 17,450	9200 19,750	5950 12,800	7050 *13,650	4600 9,850	*5800 *12,700	4450 9,800	9.19 30.83
0 m 0 ft					*18 300 *39,550	11 800 25,400	12 600 27,100	7850 16,950	9050 19,450	5800 12,500			*6350 *14,000	4550 10,000	8.99 30.00
-1.5 m -5.0 ft	kg lb	*6950 *15,550	*6950 *15,550	*10 950 *24,800	*10 950 *24,800	*18 250 *39,600	11 700 25,200	12 500 26,850	7750 16,700	8950 19,300	5750 12,350		*7350 *16,250	4850 10,700	8.52 28.33
-3.0 m -10.0 ft	kg lb	*12 500 *28,000	*12 500 *28,000	*17 650 *40,050	*17 650 *40,050	*17 150 *37,100	11 800 25,350	12 500 26,900	7750 16,750	9000 19,400	5800 12,500		8650 19,150	5550 12,300	7.73 25.83
-4.5 m -15.0 ft	kg lb			*19 900 *42,750	*19 900 *42,750	*14 600 *31,300	12 000 25,850	*10 800 *22,850	7950 17,150				*9500 *20,850	7150 16,000	6.51 21.67

## Reach Boom Lift Capacities – Counterweight: 6700 kg (14,770 lb) – without Bucket, Heavy Lift: On



Reach Boom Configuration	1.5 m/5.0 ft		3.0 m/10.0 ft		4.5 m/15.0 ft		6.0 m/20.0 ft		7.5 m/25.0 ft		9.0 m/30.0 ft		m ft		
	kg	lb	kg	lb	kg	lb	kg	lb	kg	lb	kg	lb	kg	lb	
7.5 m 25.0 ft													*5600 *12,350	*5600 *12,350	7.28 24.17
6.0 m 20.0 ft									*7900 *16,700	6350 13,650			*5350 *11,750	*5350 *11,750	8.24 27.50
4.5 m 15.0 ft							*9250 *20,050	8750 18,800	*8400 *18,300	6250 13,400			*5300 *11,650	4850 10,700	8.83 29.17
3.0 m 10.0 ft					*14 250 *30,650	12 700 27,400	*10 800 *23,400	8350 18,000	*9150 *19,900	6050 13,050	*6500 4600		*5450 *11,950	4500 9,950	9.14 30.00
1.5 m 5.0 ft					*17 000 *36,700	12 000 25,900	*12 300 *26,550	8000 17,250	9100 19,550	5900 12,650	6950 *13,650	4550 9,750	*5800 *12,700	4400 9,700	9.19 30.83
0 m 0 ft					*18 300 *39,550	11 700 25,100	12 450 26,800	7750 16,750	8950 19,200	5750 12,350			*6350 *14,000	4500 9,850	8.99 30.00
-1.5 m -5.0 ft	kg lb	*6950 *15,550	*6950 *15,550	*10 950 *24,800	*10 950 *24,800	*18 250 *39,600	11 600 24,900	12 350 26,550	7650 16,500	8850 19,050	5650 12,200		*7350 *16,250	4800 10,600	8.52 28.33
-3.0 m -10.0 ft	kg lb	*12 500 *28,000	*12 500 *28,000	*17 650 *40,050	*17 650 *40,050	*17 150 *37,100	11 650 25,050	12 350 26,600	7700 16,550	8900 19,200	5700 12,350		8550 18,900	5500 12,200	7.73 25.83
-4.5 m -15.0 ft	kg lb			*19 900 *42,750	*19 900 *42,750	*14 600 *31,300	11 850 25,550	*10 800 *22,850	7850 16,950				*9500 *20,850	7050 15,850	6.51 21.67



ISO 10567



\* Indicates that the load is limited by hydraulic lifting capacity rather than tipping load. The above loads are in compliance with hydraulic excavator lift capacity standard ISO 10567:2007. They do not exceed 87% of hydraulic lifting capacity or 75% of tipping load. Weight of all lifting accessories must be deducted from the above lifting capacities. Lifting capacities are based on the machine standing on a firm, uniform supporting surface. The use of a work tool attachment point to handle/lift objects, could affect the machine lift performance.

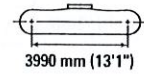
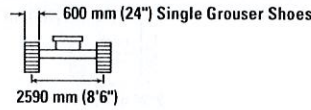
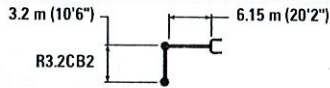
Lift capacity stays with ±5% for all available track shoes.

Always refer to the appropriate Operation and Maintenance Manual for specific product information.



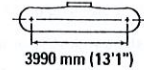
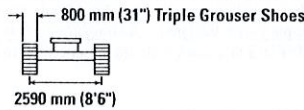
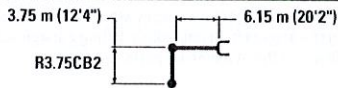
# 330 Hydraulic Excavator Specifications

## Reach Boom Lift Capacities – Counterweight: 6700 kg (14,770 lb) – without Bucket, Heavy Lift: On



		1.5 m/5.0 ft		3.0 m/10.0 ft		4.5 m/15.0 ft		6.0 m/20.0 ft		7.5 m/25.0 ft		9.0 m/30.0 ft		m ft		
		kg lb	kg lb	kg lb	kg lb	kg lb	kg lb	kg lb	kg lb	kg lb	kg lb	kg lb	kg lb	kg lb	kg lb	m ft
7.5 m	25.0 ft													*5600	*5600	7.28
														*12,350	*12,350	24.17
6.0 m	20.0 ft									*7900	6300			*5350	*5350	8.24
										*16,700	13,550			*11,750	*11,750	27.50
4.5 m	15.0 ft							*9250	8650	*8400	6200			*5300	4800	8.83
								*20,050	18,650	*18,300	13,300			*11,650	10,600	29.17
3.0 m	10.0 ft					*14 250	12 600	*10 800	8300	*9150	6000	*6500	4600	*5450	4500	9.14
						*30,650	27,200	*23,400	17,850	*19,800	12,950			*11,950	9,850	30.00
1.5 m	5.0 ft					*17 000	11 900	*12 300	7950	9000	5800	6900	4500	*5800	4350	9.19
						*36,700	25,650	*26,550	17,100	*19,350	12,550	*13,650	9,650	*12,700	9,600	30.83
0 m	0 ft					*18 300	11 600	*12 350	7700	8850	5700			*6350	4450	8.99
						*39,550	24,900	26,550	16,600	19,050	12,250			*14,000	9,800	30.00
-1.5 m	-5.0 ft	*6950	*6950	*10 950	*10 950	*18 250	11 500	12 250	7600	8800	5600			7350	4750	8.52
		*15,550	*15,550	*24,800	*24,800	*39,600	24,700	26,300	16,350	18,900	12,100			16,200	10,500	28.33
-3.0 m	-10.0 ft	*12 500	*12 500	*17 650	*17 650	*17 150	11 550	12 250	7600	8800	5650			8450	5450	7.73
		*28,000	*28,000	*40,050	*40,050	*37,100	24,850	26,350	16,400	19,000	12,200			18,750	12,050	25.83
-4.5 m	-15.0 ft			*19 900	*19 900	*14 600	11 750	*10 800	7800					*9500	7000	6.51
				*42,750	*42,750	*31,300	25,350	*22,850	16,800					*20,850	15,700	21.67

## Reach Boom Lift Capacities – Counterweight: 6700 kg (14,770 lb) – without Bucket, Heavy Lift: On



		1.5 m/5.0 ft		3.0 m/10.0 ft		4.5 m/15.0 ft		6.0 m/20.0 ft		7.5 m/25.0 ft		9.0 m/30.0 ft		m ft		
		kg lb	kg lb	kg lb	kg lb	kg lb	kg lb	kg lb	kg lb	kg lb	kg lb	kg lb	kg lb	kg lb	kg lb	m ft
7.5 m	25.0 ft									*6000	*6000			*4800	*4800	7.90
										*12,100	*12,100			*10,600	*10,600	25.83
6.0 m	20.0 ft									*7200	6500			*4600	*4600	8.79
										*15,650	13,900			*10,100	*10,100	29.17
4.5 m	15.0 ft							*8400	*8400	*7750	6350	*6050	4750	*4550	4450	9.34
								*18,250	*18,250	*16,900	13,600	*11,950	10,150	*10,050	9,850	30.83
3.0 m	10.0 ft					*12 850	*12 850	*10 000	8500	*8600	6100	7100	4650	*4700	4200	9.64
						*27,600	*27,600	*21,650	18,250	*18,650	13,150	*15,200	10,000	*10,300	9,200	31.67
1.5 m	5.0 ft					*15 900	12 150	*11 600	8050	9150	5900	7000	4550	*4950	4050	9.69
						*34,300	26,200	*25,100	17,400	19,700	12,700	15,000	9,750	*10,900	8,950	32.50
0 m	0 ft			*6750	*6750	*17 700	11 700	12 550	7750	8950	5700	6900	4450	*5400	4150	9.50
				*15,450	*15,450	*38,250	25,150	26,950	16,750	19,250	12,300	14,800	9,550	*11,900	9,100	31.67
-1.5 m	-5.0 ft	*6650	*6650	*10 600	*10 600	*18 150	11 500	12 350	7600	8850	5600	*6700	4400	*6200	4400	9.06
		*14,850	*14,850	*24,000	*24,000	*39,350	24,700	26,550	16,400	19,050	12,100			*13,650	9,650	30.00
-3.0 m	-10.0 ft	*11 000	*11 000	*15 850	*15 850	*17 500	11 500	12 300	7600	8850	5600			*7550	4950	8.32
		*24,700	*24,700	*35,900	*35,900	*37,900	24,750	26,450	16,350	19,050	12,100			*16,700	10,900	27.50
-4.5 m	-15.0 ft	*16 400	*16 400	*21 850	*21 850	*15 600	11 700	*11 650	7700					*9050	6050	7.20
				*47,100	*47,100	*33,550	25,150	*24,950	16,600					*19,950	13,550	23.33
-6.0 m	-20.0 ft					*11 350	*11 350							*8850	*8850	5.44
						*23,650	*23,650							*22,000	*22,000	16.67



ISO 10567



\* Indicates that the load is limited by hydraulic lifting capacity rather than tipping load. The above loads are in compliance with hydraulic excavator lift capacity standard ISO 10567:2007. They do not exceed 87% of hydraulic lifting capacity or 75% of tipping load. Weight of all lifting accessories must be deducted from the above lifting capacities. Lifting capacities are based on the machine standing on a firm, uniform supporting surface. The use of a work tool attachment point to handle/lift objects, could affect the machine lift performance.

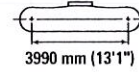
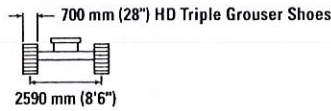
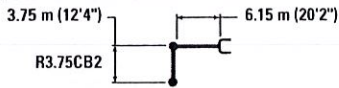
Lift capacity stays with ±5% for all available track shoes.

Always refer to the appropriate Operation and Maintenance Manual for specific product information.



# 330 Hydraulic Excavator Specifications

## Reach Boom Lift Capacities – Counterweight: 6700 kg (14,770 lb) – without Bucket, Heavy Lift: On



		1.5 m/5.0 ft		3.0 m/10.0 ft		4.5 m/15.0 ft		6.0 m/20.0 ft		7.5 m/25.0 ft		9.0 m/30.0 ft		m ft		
7.5 m 25.0 ft	kg lb									*6000 *12,100	*6000 *12,100			*4800 *10,600	*4800 *10,600	7.90 25.83
6.0 m 20.0 ft	kg lb									*7200 *15,650	6400 13,750			*4600 *10,100	*4600 *10,100	8.79 29.17
4.5 m 15.0 ft	kg lb							*8400 *18,250	*8400 *18,250	*7750 *16,900	6250 13,450	*6050 *11,950	4700 10,050	*4550 *10,050	4400 9,750	9.34 30.83
3.0 m 10.0 ft	kg lb					*12 850 *27,600	*12 850 *27,600	*10 000 *21,650	8400 18,050	*8600 *18,650	6050 13,000	7000 15,050	4600 9,850	*4700 *10,300	4150 9,100	9.64 31.67
1.5 m 5.0 ft	kg lb					*15 900 *34,300	12 050 25,950	*11 600 *25,100	8000 17,200	9050 19,450	5850 12,550	6900 14,800	4500 9,650	*4950 *10,900	4000 8,850	9.69 32.50
0 m 0 ft	kg lb			*6750 *15,450	*6750 *15,450	*17 700 *38,250	11 550 24,850	12 400 26,600	7700 16,550	8850 19,050	5650 12,150	6800 14,600	4400 9,450	*5400 *11,900	4100 8,950	9.50 31.67
-1.5 m -5.0 ft	kg lb	*6650 *14,850	*6650 *14,850	*10 600 *24,000	*10 600 *24,000	*18 150 *39,350	11 350 24,450	12 200 26,200	7500 16,200	8750 18,800	5550 11,950	*6700 14,600	4350 9,450	*6200 *13,650	4350 9,550	9.06 30.00
-3.0 m -10.0 ft	kg lb	*11 000 *24,700	*11 000 *24,700	*15 850 *35,900	*15 850 *35,900	*17 500 *37,900	11 350 24,450	12 150 26,150	7500 16,150	8750 18,800	5550 11,950			*7550 *16,700	4850 10,750	8.32 27.50
-4.5 m -15.0 ft	kg lb	*16 400 *36,400	*16 400 *36,400	*21 850 *47,100	*21 850 *47,100	*15 600 *33,550	11 550 24,850	*11 650 *24,950	7600 16,400					*9050 *19,950	6000 13,400	7.20 23.33
-6.0 m -20.0 ft	kg lb					*11 350 *23,650	*11 350 *23,650							*8850 *22,000	*8850 *22,000	5.44 16.67



ISO 10567



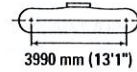
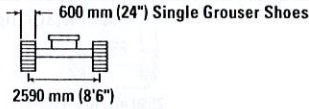
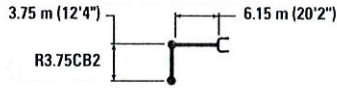
\* Indicates that the load is limited by hydraulic lifting capacity rather than tipping load. The above loads are in compliance with hydraulic excavator lift capacity standard ISO 10567:2007. They do not exceed 87% of hydraulic lifting capacity or 75% of tipping load. Weight of all lifting accessories must be deducted from the above lifting capacities. Lifting capacities are based on the machine standing on a firm, uniform supporting surface. The use of a work tool attachment point to handle/lift objects, could affect the machine lift performance.

Lift capacity stays with ±5% for all available track shoes.

Always refer to the appropriate Operation and Maintenance Manual for specific product information.

# 330 Hydraulic Excavator Specifications

## Reach Boom Lift Capacities – Counterweight: 6700 kg (14,770 lb) – without Bucket, Heavy Lift: On



		1.5 m/5.0 ft		3.0 m/10.0 ft		4.5 m/15.0 ft		6.0 m/20.0 ft		7.5 m/25.0 ft		9.0 m/30.0 ft				m ft
7.5 m 25.0 ft	kg lb									*6000 *12,100	*6000 *12,100			*4800 *10,600	*4800 *10,600	7.90 25.83
6.0 m 20.0 ft	kg lb									*7200 *15,650	6350 13,650			*4600 *10,100	*4600 *10,100	8.79 29.17
4.5 m 15.0 ft	kg lb							*8400 *18,250	*8400 *18,250	*7750 *16,900	6200 13,350	*6050 *11,950	4650 9,950	*4550 *10,050	4350 9,650	9.34 30.83
3.0 m 10.0 ft	kg lb					*12 850 *27,600	12 750 27,500	*10 000 *21,650	8300 17,900	*8600 *18,650	6000 12,900	6950 14,950	4550 9,750	*4700 *10,300	4100 9,000	9.64 31.67
1.5 m 5.0 ft	kg lb					*15 900 *34,300	11 950 25,700	*11 600 *25,100	7900 17,050	8950 19,250	5800 12,450	6850 14,700	4450 9,550	*4950 *10,900	4000 8,750	9.69 32.50
0 m 0 ft	kg lb			*6750 *15,450	*6750 *15,450	*17 700 *38,250	11 450 24,650	12 250 26,350	7600 16,400	8750 18,850	5600 12,050	6750 14,500	4350 9,350	*5400 *11,900	4050 8,900	9.50 31.67
-1.5 m -5.0 ft	kg lb	*6650 *14,850	*6650 *14,850	*10 600 *24,000	*10 600 *24,000	*18 150 *39,350	11 250 24,200	12 100 25,950	7450 16,050	8650 18,600	5500 11,850	*6700	4300	*6200 *13,650	4300 9,450	9.06 30.00
-3.0 m -10.0 ft	kg lb	*11 000 *24,700	*11 000 *24,700	*15 850 *35,900	*15 850 *35,900	*17 500 *37,900	11 250 24,250	12 050 25,900	7450 16,000	8650 18,650	5500 11,850			7500 16,600	4800 10,650	8.32 27.50
-4.5 m -15.0 ft	kg lb	*16 400 *36,400	*16 400 *36,400	*21 850 *47,100	*21 850 *47,100	*15 600 *33,550	11 450 24,650	*11 650 *24,950	7550 16,250					*9050 *19,950	5950 13,250	7.20 23.33
-6.0 m -20.0 ft	kg lb					*11 350 *23,650	*11 350 *23,650							*8850 *22,000	*8850 *22,000	5.44 16.67



ISO 10567



\* Indicates that the load is limited by hydraulic lifting capacity rather than tipping load. The above loads are in compliance with hydraulic excavator lift capacity standard ISO 10567:2007. They do not exceed 87% of hydraulic lifting capacity or 75% of tipping load. Weight of all lifting accessories must be deducted from the above lifting capacities. Lifting capacities are based on the machine standing on a firm, uniform supporting surface. The use of a work tool attachment point to handle/lift objects, could affect the machine lift performance.

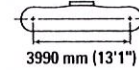
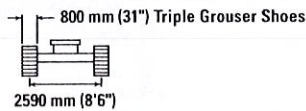
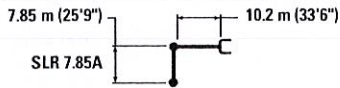
Lift capacity stays with ±5% for all available track shoes.

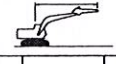

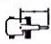



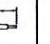

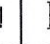
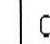

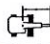


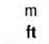
Always refer to the appropriate Operation and Maintenance Manual for specific product information.



# 330 Hydraulic Excavator Specifications

## SLR Boom Lift Capacities – Counterweight: 6700 kg (14,770 lb) – without Bucket



		1.5 m/5.0 ft		3.0 m/10.0 ft		4.5 m/15.0 ft		6.0 m/20.0 ft		7.5 m/25.0 ft		9.0 m/30.0 ft				m ft	
																	
12.0 m 40.0 ft	kg lb													*1350 *2,950	*1350 *2,950	14.03 45.83	
10.5 m 35.0 ft	kg lb													*1300 *2,800	*1300 *2,800	15.01 49.17	
9.0 m 30.0 ft	kg lb													*1250 *2,750	*1250 *2,750	15.78 51.67	
7.5 m 25.0 ft	kg lb													*1250 *2,750	*1250 *2,750	16.37 54.17	
6.0 m 20.0 ft	kg lb													*1250 *2,750	*1250 *2,750	16.81 55.00	
4.5 m 15.0 ft	kg lb													*1300 *2,800	*1300 *2,800	17.11 56.67	
3.0 m 10.0 ft	kg lb			*4050	*4050								*4150 *9,000	*4150 *9,000	*1350 *2,900	*1350 *2,900	17.27 56.67
1.5 m 5.0 ft	kg lb			*1550 *3,550	*1550 *3,550	*5200 *12,150	*5200 *12,150	*7400 *15,950	7350 15,850	*5750 *12,350	5450 11,800	*4750 *10,300	4250 9,200	*1400 *3,000	*1400 *3,000	17.30 56.67	
0 m 0 ft	kg lb			*1650 *3,750	*1650 *3,750	*3600 *8,250	*3600 *8,250	*8250 *18,500	6600 14,250	*6550 *14,100	5000 10,750	*5350 *11,550	3950 8,500	*1450 *3,150	*1450 *3,150	17.19 56.67	
-1.5 m -5.0 ft	kg lb	*1650 *3,600	*1650 *3,600	*2150 *4,800	*2150 *4,800	*3550 *8,000	*3550 *8,000	*6500 *14,900	6150 13,250	*7200 *15,500	4650 10,000	*5800 *12,550	3700 7,950	*1550 *3,400	*1550 *3,150	16.96 55.83	
-3.0 m -10.0 ft	kg lb	*2250 *4,950	*2250 *4,950	*2750 *6,100	*2750 *6,100	*3900 *8,750	*3900 *8,750	*6250 *14,250	5900 12,650	7600 16,300	4400 9,500	5900 12,700	3500 7,500	*1650 *3,650	*1500 *3,250	16.58 55.00	
-4.5 m -15.0 ft	kg lb	*2850 *6,300	*2850 *6,300	*3350 *7,500	*3350 *7,500	*4450 *10,050	*4450 *10,050	*6600 *14,950	5750 12,400	7450 16,000	4300 9,200	5800 12,450	3400 7,250	*1850 *4,050	*1550 *3,350	16.05 52.50	
-6.0 m -20.0 ft	kg lb	*3450 *7,750	*3450 *7,750	*4050 *9,050	*4050 *9,050	*5150 *11,650	*5150 *11,650	*7250 *16,500	5750 12,400	7400 15,900	4250 9,100	5700 12,300	3350 7,150	*2100 *4,600	*1650 *3,600	15.36 50.83	
-7.5 m -25.0 ft	kg lb	*4150 *9,250	*4150 *9,250	*4800 *10,800	*4800 *10,800	*6050 *13,600	*6050 *13,600	*8250 *18,850	5800 12,550	7400 15,950	4250 9,150	5700 12,300	3350 7,150	*2400 *5,350	*1800 *4,000	14.47 47.50	
-9.0 m -30.0 ft	kg lb	*4900 *10,900	*4900 *10,900	*5650 *12,750	*5650 *12,750	*7050 *16,000	*7050 *16,000	*9550 *20,650	5950 12,850	7500 16,150	4350 9,350	5800 12,450	3400 7,300	*2950 *6,600	*2050 *4,600	13.36 44.17	
-10.5 m -35.0 ft	kg lb	*5700 *12,750	*5700 *12,750	*6650 *15,000	*6650 *15,000	*8350 *19,050	*8350 *19,050	*8850 *18,950	6150 13,350	*7150 *15,350	4500 9,700	5900 *12,700	3500 7,600	*3900 *8,950	*2450 *5,550	11.96 39.17	
-12.0 m -40.0 ft	kg lb			*7850 *17,700	*7850 *17,700	*9800 *20,750	*9800 *20,750	*7700 *16,300	6500 14,050	*6250 *13,200	4750 10,250	*5100 *10,700	3700 8,100	*4350 *9,600	*3200 *7,400	10.14 32.50	



ISO 10567



\* Indicates that the load is limited by hydraulic lifting capacity rather than tipping load. The above loads are in compliance with hydraulic excavator lift capacity standard ISO 10567:2007. They do not exceed 87% of hydraulic lifting capacity or 75% of tipping load. Weight of all lifting accessories must be deducted from the above lifting capacities. Lifting capacities are based on the machine standing on a firm, uniform supporting surface. The use of a work tool attachment point to handle/lift objects, could affect the machine lift performance.

Lift capacity stays with ±5% for all available track shoes.

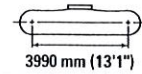
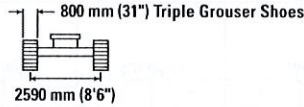
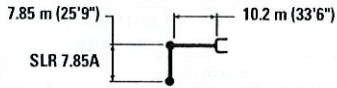
Always refer to the appropriate Operation and Maintenance Manual for specific product information.

(continued on next page)



# 330 Hydraulic Excavator Specifications

## SLR Boom Lift Capacities – Counterweight: 6700 kg (14,770 lb) – without Bucket (continued)



		10.5 m/35.0 ft		12.0 m/40.0 ft		13.5 m/45.0 ft		15.0 m/50.0 ft		16.5 m/55.0 ft		m ft		
12.0 m 40.0 ft	kg lb					*3,350	*3,350					*1350 *2,950	*1350 *2,950	14.03 45.83
10.5 m 35.0 ft	kg lb							*1300	*1300			*1300 *2,800	*1300 *2,800	15.01 49.17
9.0 m 30.0 ft	kg lb							*2100 *3,950	*2100 *3,950			*1250 *2,750	*1250 *2,750	15.78 51.67
7.5 m 25.0 ft	kg lb					*2650 *5,800	*2650 *5,800	*2550 *5,200	2250 4,700			*1250 *2,750	*1250 *2,750	16.37 54.17
6.0 m 20.0 ft	kg lb					*2800 *6,100	2650 5,700	*2750 *6,050	2150 4,600	*1700 *2,850	*1700 *2,850	*1250 *2,750	*1250 *2,750	16.81 55.00
4.5 m 15.0 ft	kg lb			*3100 *6,800	*3100 6,750	*3000 *6,500	2550 5,450	*2900 *6,300	2100 4,450	*2100 *3,850	1700 3,650	*1300 *2,800	*1300 *2,800	17.11 56.67
3.0 m 10.0 ft	kg lb	*3700 *8,050	3650 7,900	*3400 *7,400	2950 6,350	*3200 *6,950	2450 5,200	*3050 *6,650	2000 4,300	*2350 *4,500	1650 3,550	*1350 *2,900	*1350 *2,900	17.27 56.67
1.5 m 5.0 ft	kg lb	*4150 *9,000	3400 7,350	*3750 *8,100	2800 6,000	*3450 *7,450	2300 4,950	3150 6,750	1950 4,100	*2550 *4,800	1600 3,400	*1400 *3,000	*1400 *3,000	17.30 56.67
0 m 0 ft	kg lb	*4550 *9,850	3200 6,850	*4050 *8,750	2650 5,650	3600 7,700	2200 4,700	3050 6,550	1850 3,950	*2550 *4,750	1550 3,300	*1450 *3,150	1450 3,150	17.19 56.67
-1.5 m -5.0 ft	kg lb	*4900 *10,650	3000 6,450	4100 8,850	2500 5,350	3500 7,500	2100 4,500	3000 6,400	1750 3,800	*2400 *4,150	1500 3,200	*1550 *3,400	1450 3,150	16.96 55.83
-3.0 m -10.0 ft	kg lb	4800 10,300	2850 6,150	4000 8,600	2400 5,100	3400 7,300	2000 4,300	2950 6,300	1700 3,650	*1850	1500	*1650 *3,650	1500 3,250	16.58 55.00
-4.5 m -15.0 ft	kg lb	4700 10,100	2750 5,950	3900 8,450	2300 4,950	3350 7,200	1950 4,200	2900 6,250	1700 3,600			*1850 *4,050	1550 3,350	16.05 52.50
-6.0 m -20.0 ft	kg lb	4650 10,000	2700 5,850	3900 8,350	2250 4,900	3350 7,150	1950 4,150	2900 *4,950	1700 3,650			*2100 *4,600	1650 3,600	15.36 50.83
-7.5 m -25.0 ft	kg lb	4650 10,000	2700 5,850	3900 8,400	2300 4,900	3350 7,200	1950 4,200					*2400 *5,350	1800 4,000	14.47 47.50
-9.0 m -30.0 ft	kg lb	4700 10,150	2750 5,950	3950 8,500	2350 5,050							*2950 *6,600	2050 4,600	13.36 44.17
-10.5 m -35.0 ft	kg lb	4800 10,400	2900 6,250									*3900 *8,950	2450 5,550	11.96 39.17
-12.0 m -40.0 ft	kg lb											*4350 *9,600	3200 7,400	10.14 32.50



ISO 10567



\* Indicates that the load is limited by hydraulic lifting capacity rather than tipping load. The above loads are in compliance with hydraulic excavator lift capacity standard ISO 10567:2007. They do not exceed 87% of hydraulic lifting capacity or 75% of tipping load. Weight of all lifting accessories must be deducted from the above lifting capacities. Lifting capacities are based on the machine standing on a firm, uniform supporting surface. The use of a work tool attachment point to handle/lift objects, could affect the machine lift performance.

Lift capacity stays with ±5% for all available track shoes.

Always refer to the appropriate Operation and Maintenance Manual for specific product information.



# 330 Hydraulic Excavator Specifications

## Bucket Specifications and Compatibility

	Linkage	Width		Capacity		Weight		Fill	6.7 mt (14,770 lb) Counterweight			
		mm	in	m <sup>3</sup>	yd <sup>3</sup>	kg	lb		%	Reach Boom		SLR Boom
										R3.75CB2 (12'4")	R3.2CB2 (10'6")	SLR 7.85A (25'9")
<b>Pin-On (No Quick Coupler)</b>												
General Duty Capacity	CB	600	24	0.63	0.83	724	1,597	100	●	●		
	CB	750	30	0.86	1.13	811	1,788	100	●	●		
	CB	900	36	1.09	1.43	908	2,002	100	●	●		
	CB	1050	42	1.34	1.75	980	2,161	100	●	●		
	CB	1200	48	1.58	2.07	1072	2,363	100	⊙	●		
	CB	1350	54	1.83	2.40	1166	2,570	100	⊖	⊙		
General Duty Capacity – Wide Tip	CB	600	24	0.63	0.83	749	1,652	100	●	●		
	CB	750	30	0.86	1.13	845	1,863	100	●	●		
	CB	900	36	1.09	1.43	942	2,077	100	●	●		
	CB	1050	42	1.34	1.75	1022	2,253	100	●	●		
	CB	1200	48	1.58	2.07	1123	2,475	100	⊙	●		
	CB	1350	54	1.83	2.40	1224	2,698	100	⊖	⊙		
Heavy Duty	CB	600	24	0.52	0.68	733	1,616	100	●	●		
	CB	750	30	0.71	0.93	851	1,876	100	●	●		
	CB	900	36	0.91	1.19	945	2,084	100	●	●		
	CB	1050	42	1.12	1.46	1041	2,295	100	●	●		
	CB	1200	48	1.33	1.74	1112	2,452	100	●	●		
	CB	1350	54	1.54	2.02	1212	2,672	100	⊙	●		
	CB	1500	60	1.76	2.30	1306	2,879	100	⊖	⊙		
Heavy Duty Power	CB	1650	66	1.97	2.58	1383	3,048	100	○	⊖		
	CB	1050	42	1.12	1.47	1070	2,360	100	●	●		
	CB	1200	48	1.33	1.73	1148	2,532	100	●	●		
	CB	1350	54	1.53	2.01	1253	2,762	100	⊙	●		
Severe Duty	CB	600	24	0.52	0.68	755	1,665	90	●	●		
	CB	750	30	0.71	0.93	915	2,017	90	●	●		
	CB	900	36	0.91	1.19	1000	2,204	90	●	●		
	CB	1050	42	1.12	1.46	1099	2,424	90	●	●		
	CB	1200	48	1.33	1.74	1177	2,596	90	●	●		
Ditch Cleaning	A	1150	45	0.60	0.78	292	644	100			○	
	A	1200	48	0.57	0.74	388	855	100			○	
	A	1500	60	0.74	0.97	455	1,003	100			◇	
General Duty	A	900	36	0.53	0.69	394	869	100			○	
											○	
Maximum load with pin-on (payload + bucket)									kg	4135	4605	1135
									lb	9,116	10,152	2,502

**Maximum Material Density:**

- 2100 kg/m<sup>3</sup> (3,500 lb/yd<sup>3</sup>)
- ⊙ 1800 kg/m<sup>3</sup> (3,000 lb/yd<sup>3</sup>)
- ⊖ 1500 kg/m<sup>3</sup> (2,500 lb/yd<sup>3</sup>)
- 1200 kg/m<sup>3</sup> (2,000 lb/yd<sup>3</sup>)
- ◇ 900 kg/m<sup>3</sup> (1,500 lb/yd<sup>3</sup>)

The above loads are in compliance with hydraulic excavator standard EN474-5:2006+A3:2013, they do not exceed 87% of hydraulic lifting capacity or 75% of tipping capacity with front linkage fully extended at ground line with bucket curled.

Capacity based on ISO 7451.

Bucket weight with General Duty tips.

Caterpillar recommends using appropriate work tools to maximize the value customers receive from our products. Use of work tools, including buckets, which are outside of Caterpillar's recommendations or specifications for weight, dimensions, flows, pressures, etc. may result in less-than-optimal performance, including but not limited to reductions in production, stability, reliability, and component durability. Improper use of a work tool resulting in sweeping, prying, twisting and/or catching of heavy loads will reduce the life of the boom and stick.

(continued on next page)



# 330 Hydraulic Excavator Specifications

## Bucket Specifications and Compatibility (continued)

	Linkage	Width		Capacity		Weight		Fill	6.7 mt (14,770 lb) Counterweight		
		mm	in	m <sup>3</sup>	yd <sup>3</sup>	kg	lb		Reach Boom		SLR Boom
									R3.75CB2 (12'4")	R3.2CB2 (10'6")	SLR 7.85A (25'9")
<b>With Pin Grabber Quick Coupler</b>											
General Duty Capacity	CB	600	24	0.63	0.83	724	1,597	100	●	●	
	CB	750	30	0.86	1.13	811	1,788	100	●	●	
	CB	900	36	1.09	1.43	908	2,002	100	●	●	
	CB	1050	42	1.34	1.75	980	2,161	100	●	●	
	CB	1200	48	1.58	2.07	1072	2,363	100	⊙	●	
	CB	1350	54	1.83	2.40	1166	2,570	100	⊖	⊙	
General Duty Capacity – Wide Tip	CB	600	24	0.63	0.83	749	1,652	100	●	●	
	CB	750	30	0.86	1.13	845	1,863	100	●	●	
	CB	900	36	1.09	1.43	942	2,077	100	●	●	
	CB	1050	42	1.34	1.75	1022	2,253	100	●	●	
	CB	1200	48	1.58	2.07	1123	2,475	100	⊙	●	
	CB	1350	54	1.83	2.40	1224	2,698	100	⊖	⊙	
Heavy Duty	CB	600	24	0.52	0.68	733	1,616	100	●	●	
	CB	750	30	0.71	0.93	851	1,876	100	●	●	
	CB	900	36	0.91	1.19	945	2,084	100	●	●	
	CB	1050	42	1.12	1.46	1041	2,295	100	●	●	
	CB	1200	48	1.33	1.74	1112	2,452	100	●	●	
	CB	1350	54	1.54	2.02	1212	2,672	100	⊙	●	
	CB	1500	60	1.76	2.30	1306	2,879	100	⊖	⊙	
Heavy Duty Power	CB	1650	66	1.97	2.58	1383	3,048	100	○	⊖	
	CB	1050	42	1.12	1.47	1070	2,360	100	●	●	
	CB	1200	48	1.33	1.73	1148	2,532	100	●	●	
Heavy Duty – Pin Grabber Performance	CB	1350	54	1.53	2.01	1253	2,762	100	⊙	●	
	CB	750	30	0.70	0.91	879	1,938	100	●	●	
	CB	1050	42	1.08	1.42	1110	2,448	100	●	●	
	CB	1200	48	1.28	1.68	1191	2,626	100	●	●	
Severe Duty	CB	1350	54	1.49	1.94	1299	2,864	100	⊙	●	
	CB	1500	60	1.69	2.21	1406	3,099	100	⊖	⊙	
	CB	600	24	0.52	0.68	755	1,665	90	●	●	
	CB	750	30	0.71	0.93	915	2,017	90	●	●	
	CB	900	36	0.91	1.19	1000	2,204	90	●	●	
Severe Duty – Pin Grabber Performance	CB	1050	42	1.12	1.46	1099	2,424	90	●	●	
	CB	1200	48	1.33	1.74	1177	2,596	90	●	●	
	CB	600	24	0.51	0.66	832	1,835	90	●	●	
	CB	900	36	0.88	1.16	1062	2,341	90	●	●	
Ditch Cleaning	CB	1050	42	1.08	1.42	1170	2,580	90	●	●	
	CB	1200	48	1.28	1.68	1257	2,772	90	●	●	
	A	1150	45	0.60	0.78	292	644	100			X
	A	1200	48	0.57	0.74	388	855	100			X
General Duty	A	1500	60	0.74	0.97	455	1,003	100			X
	A	900	36	0.53	0.69	394	869	100			X
Maximum load with coupler (payload + bucket)								kg	3609	4079	609
								lb	7,956	8,992	1,342

### Maximum Material Density:

- 2100 kg/m<sup>3</sup> (3,500 lb/yd<sup>3</sup>)
- ⊙ 1800 kg/m<sup>3</sup> (3,000 lb/yd<sup>3</sup>)
- ⊖ 1500 kg/m<sup>3</sup> (2,500 lb/yd<sup>3</sup>)
- 1200 kg/m<sup>3</sup> (2,000 lb/yd<sup>3</sup>)
- X Not Recommended

The above loads are in compliance with hydraulic excavator standard EN474-5:2006+A3:2013, they do not exceed 87% of hydraulic lifting capacity or 75% of tipping capacity with front linkage fully extended at ground line with bucket curled. Capacity based on ISO 7451.

Bucket weight with General Duty tips.

Caterpillar recommends using appropriate work tools to maximize the value customers receive from our products. Use of work tools, including buckets, which are outside of Caterpillar's recommendations or specifications for weight, dimensions, flows, pressures, etc. may result in less-than-optimal performance, including but not limited to reductions in production, stability, reliability, and component durability. Improper use of a work tool resulting in sweeping, prying, twisting and/or catching of heavy loads will reduce the life of the boom and stick.



# 330 Hydraulic Excavator Specifications

## Attachments Offering Guide

### PIN-ON ATTACHMENTS

Counterweight		6.7 mt (14,770 lb)	
		Reach Boom	Reach Boom
Boom Type		3.20 m (10'6")	3.75 m (12'4")
Stick Length		3.20 m (10'6")	3.75 m (12'4")
Hydraulic Hammers	H120E S	✓	✓
	H130 GC	✓	✓
	H130 GC S	✓	✓
	H130E S	✓	✓
	H140 GC	✓	✓
	H140 GC S	✓	✓
	H140E S	✓	✓
Multi-Processors	MP324 CC Jaw	✓	✓
	MP324 D Jaw	✓	✓
	MP324 P Jaw	✓	✓
	MP324 S Jaw	✓	✓
	MP324 TS Jaw	✓	✓
	MP324 U Jaw	✓	✓
Pulverizers	P225	✓	✓
Demolition and Sorting Grapples	G320B	✓	✓
	G320B WH	✓	✓
	G325B	✓	✓
Compactors (Vibratory Plate)	CVP110	✓	✓
Mobile Scrap and Demolition Shears	S3025	✓	✓
	S3035	✓	✓
Orange Peel Grapples		✓	✓
Contractors' Grapples		✓	✓
Trash Grapples		✓	✓
Thumbs		✓	✓
Rakes		✓	✓
Rippers		✓	✓
Cat Pin Grabber Couplers		✓	✓

(continued on next page)

# 330 Hydraulic Excavator Specifications

## Attachments Offering Guide (continued)

### CAT PIN GRABBER COUPLER ATTACHMENTS

Counterweight		6.7 mt (14,770 lb)	
Boom Type		Reach Boom	Reach Boom
Stick Length		3.20 m (10'6")	3.75 m (12'4")
Hydraulic Hammers	H120E S	✓	✓
	H130 GC	✓	✓
	H130 GC S	✓	✓
	H130E S	✓	✓
	H140 GC	✓	✓
	H140 GC S	✓	✓
	H140E S	✓	✓
	Multi-Processors	MP324 CC Jaw	✓
MP324 D Jaw		✓	✓
MP324 P Jaw		✓	✓
MP324 S Jaw		✓	✓
MP324 TS Jaw		✓	✓
MP324 U Jaw		✓	✓
Pulverizers	P225	✓	✓
Demolition and Sorting Grapples	G320B	✓	✓†
	G320B WH	✓	✓†
	G325B	✓	✓†
Compactors (Vibratory Plate)	CVP110	✓	✓
Mobile Scrap and Demolition Shears	S3025	✓	✓
	S3035	✓	
Contractors' Grapples		✓	✓
Thumbs		✓	✓
Rakes		✓	✓
Rippers		✓	✓

### BOOM-MOUNT ATTACHMENTS

Counterweight		6.7 mt (14,770 lb)	
Boom Type		Reach Boom	
Mobile Scrap and Demolition Shears	S2070	✓	
	S3050	✓	

†Allowed usage on machine less than 50%.



# 330 Standard and Optional Equipment

## Standard and Optional Equipment

Standard and optional equipment may vary. Consult your Cat dealer for details.

	Standard	Optional		Standard	Optional
<b>CAB</b>			<b>CAT TECHNOLOGY</b>		
ROPS, standard sound suppression	✓		Cat Product Link™	✓	
High-resolution 254 mm (10") LCD touchscreen monitor	✓		Work tool recognition	✓	
High-resolution 254 mm (10") LCD touchscreen monitor + additional monitor (only for use with Cat GRADE with Advanced 2D or Cat GRADE with 3D)		✓	Work tool tracking*	✓	
Automatic bi-level air conditioner	✓		Laser catcher		✓
Jog dial and shortcut keys for monitor control	✓		Cat GRADE with 2D and offset memory	✓	
Keyless push-to-start engine control	✓		Cat GRADE with Advanced 2D		✓
Height-adjustable infinite, with no tool	✓		Cat GRADE with 3D connectivity: – Virtual Reference Station** – Internet Base Service Station** – Trimble Connected Community**		✓
Tilt-up left-side console	✓		Cat Assist:	✓	
Heated seat with air-adjustable suspension	✓		– Grade Assist		
51 mm (2") orange seat belt	✓		– Boom Assist		
Bluetooth® integrated radio (including USB, aux port and microphone)	✓		– Bucket Assist		
12V DC outlets	✓		– Swing Assist		
Document storage	✓		– Lift Assist		
Rear head storage net & lunchbox storage net	✓		Cat Payload:	✓	
Cup and bottle holders	✓		– Static weigh		
Openable two-piece front window	✓		– Semiautomatic calibration		
Upper radial wiper with washer	✓		– Payload/cycle information		
Openable polycarbonate skylight hatch	✓		– USB reporting capability		
LED dome light	✓		2D E-Fence:	✓	
Floor welcome light	✓		– E-ceiling		
Roller front sunscreen	✓		– E-floor		
Roller rear sunscreen		✓	– E-swing		
Rear window emergency exit	✓		– E-wall		
Washable floor mat	✓		– E-cab avoidance		
Beacon ready	✓		Auto hammer stop	✓	
			Remote Services capability	✓	

\*Paired with PL161 attachment locator.  
\*\*Subscription required.

(continued on next page)



## 330 Standard and Optional Equipment

### Standard and Optional Equipment (continued)

Standard and optional equipment may vary. Consult your Cat dealer for details.

	Standard	Optional		Standard	Optional
<b>ENGINE</b>			<b>BOOMS, STICKS AND LINKAGES</b>		
Three selectable modes: Power, Smart, Eco	✓		6.15 m (20'2") Reach boom		✓
Automatic engine speed control	✓		10.2 m (33'6") Super Long Reach boom		✓
Automatic engine idle-shutdown	✓		3.2 m (10'6") Reach stick, CB2 Linkage		✓
4500 m (14,760 ft) altitude capability with engine power derate above 3000 m (9,840 ft)	✓		3.75 m (12'4") Reach stick, CB2 Linkage		✓
52° C (125° F) high-ambient cooling capability with derate	✓		7.85 m (25'9") Super Long Reach stick, A linkage		✓
-18° C (0° F) cold start capability	✓		Bucket linkage, CB2 family with lifting eye, Cat GRADE		✓
-32° C (-25° F) cold start capability		✓	Bucket linkage, A family with lifting eye		✓
Cold start block heaters		✓	<b>UNDERCARRIAGE AND STRUCTURES</b>		
2 × 115 amp dual alternator	✓		Track guiding guard, full length		✓
Sealed double element air filter with integrated precleaner	✓		Track guiding guard, segmented three piece	✓	
Two-stage fuel filtration with water separator and indicator	✓		Swivel guard	✓	
Electric fuel priming pump	✓		HD bottom guard	✓	
On-demand electric cooling fans with auto-reverse function	✓		HD travel motor guard	✓	
Biodiesel capability up to B20	✓		Grease lubricated track	✓	
<b>HYDRAULIC SYSTEM</b>			Swing drive and motor, and swing bearing for higher swing torque	✓	
Electronic main control valve	✓		Base frame with HD rollers	✓	
Electric boom regeneration circuit	✓		Tie-down points on base frame	✓	
Stick regeneration circuit	✓		6700 kg (14,770 lb) counterweight	✓	
Automatic hydraulic oil warm up	✓		600 mm (24") single grouser track shoes		✓
Automatic two-speed travel	✓		700 mm (28") HD triple grouser track shoes		✓
Boom and stick drift reduction valve	✓		800 mm (31") triple grouser track shoes		✓
Boom lowering check valve		✓	<i>(continued on next page)</i>		
Stick lowering check valve		✓			
Heavy lift mode	✓				
High performance hydraulic return filter	✓				
Final drive with bio hydraulic oil capable travel motor	✓				
Fine swing control	✓				
Advanced Tool Control (two pump, one/two way high-pressure flow)		✓			
Medium-pressure circuit		✓			
Common Quick Coupler Circuit for Cat Pin Grabber and CW Dedicated		✓			
Electronic Pattern Changer (requires activation)	✓				



## 330 Standard and Optional Equipment

### Standard and Optional Equipment (continued)

Standard and optional equipment may vary. Consult your Cat dealer for details.

	Standard	Optional		Standard	Optional
<b>ELECTRICAL SYSTEM</b>			<b>SAFETY AND SECURITY</b>		
Maintenance-free 1,000 CCA batteries (×2)	✓		Rearview camera	✓	
After engine shutdown, programmable time delay LED working lights: one chassis mounted, one LH boom mounted	✓		Right-hand-sideview camera	✓	
Centralized electrical disconnect switch	✓		360° Visibility		✓
LED chassis light, LH and RH boom lights, cab lights	✓		Secure start with PIN code	✓	
Compatible with Electronic Technician	✓		Caterpillar One Key security system	✓	
<b>SERVICE AND MAINTENANCE</b>			Lockable external tool/storage box	✓	
Grouped location of engine oil and fuel filters	✓		Lockable door, fuel, and hydraulic tank locks	✓	
Ground-level second dipstick for engine oil	✓		Lockable fuel drain compartment	✓	
Side entry to service platform	✓		Service platform with anti-skid plate and recessed bolts	✓	
Scheduled Oil Sampling (S·O·S <sup>SM</sup> ) ports	✓		RH handrail and hand hold (ISO 2867:2011 compliant)	✓	
QuickEvac <sup>TM</sup> maintenance ready	✓		Cab mirror for RH track edge	✓	
Radiator screen		✓	Signaling/warning horn	✓	
			Ground-level secondary engine shutoff switch in cab	✓	
			Hydraulic lock out lever that neutralizes all controls	✓	
			Travel alarm	✓	



## Dealer Installed Kits and Attachments

Attachments may vary. Consult your Cat dealer for details.

### CAB

- LH/RH electrical pedal (two-way) for tool control
- Dual exit rear window kit
- Radial lower wiper for two piece (70/30) windshield, with washer
- Rain protector plus cab light cover

### SAFETY AND SECURITY

- 75 mm (3") retractable seat belt
- Bluetooth key fob

### GUARDS

- Side rubber bumper guard
- Falling object guard system (not compatible with cab light cover, rain protector)
- Mesh guard full front (not compatible with cab light cover, rain protector)
- Mesh guard lower half front
- Full protecting vandalism guard (not compatible with cab light cover, rain protector)

### ELECTRICAL

- Premium lighting package
- Jump start wiring

For more complete information on Cat products, dealer services, and industry solutions, visit us on the web at [www.cat.com](http://www.cat.com)

© 2020 Caterpillar  
All rights reserved

Materials and specifications are subject to change without notice. Featured machines in photos may include additional equipment. See your Cat dealer for available options.

CAT, CATERPILLAR, LET'S DO THE WORK, their respective logos, "Caterpillar Yellow," the "Power Edge" and Cat "Modern Hex" trade dress as well as corporate and product identity used herein, are trademarks of Caterpillar and may not be used without permission.

AEXJ0075-02 (01-2020)  
Replaces AEXJ0075-01  
Build Number: 07B  
(North America)





Effective with sales to the first user on or after June 1, 2015

# CATERPILLAR LIMITED WARRANTY

For Selected Machine Models Designated by Caterpillar with 12 Month/Unlimited Hour Warranty

Worldwide

Caterpillar Inc. or any of its subsidiaries ("Caterpillar") warrants the following products sold by it to be free from defects in material and workmanship:

- New earthmoving, construction, material handling, forestry product, paving product, compact wheel loader, mini hydraulic excavator, skid steer loader, multi terrain loader, and compact track loader machines designated by Caterpillar as having 12-months/unlimited hour warranty. See your Cat® dealer for a complete listing of covered models.

- Attachments/work tools installed on such machines prior to delivery (unless covered by the Cat Work Tool warranty statement or another manufacturer's warranty). Hammer tool points and compacting plates used on hydraulic hammers are not warranted.

An additional warranty against breakage is applicable to certain Cat ground engaging tools. An additional warranty against wear is applicable to all landfill compactor tips when used in residential waste landfills. Refer to the applicable warranty statements for coverage detail.

This warranty does not apply to:

- Cat Batteries
- Mobil-trac belts, rubber tracks used on multi terrain loaders, compact track loaders, and mini hydraulic excavators
- Cat Work Tools
- Select models designated by Caterpillar that are sold in India and China

These products are covered by other Caterpillar warranties. This warranty is subject to the following:

## Warranty Period

For new machines and work tools/attachments the warranty period is 12-months/unlimited hours, starting from date of delivery to the first user.

## Note:

- For hydraulic line's quick connect/disconnect components sold on compact/wheel loaders, mini hydraulic excavators, skid steer loaders, multi terrain loaders, and compact track loader machines, the warranty period is 50 hours starting from the date of delivery to the first user.
- For Draglines, Electric Rope Shovels, Hard Rock Movers, Hard Rock Feeders; the warranty period is not to exceed 24 months from shipment of the last major component from the Caterpillar place of manufacture.

## Caterpillar Responsibilities

If a defect in material or workmanship is found during the warranty period, Caterpillar will, during normal working hours and at a place of business of a Cat dealer or other source approved by Caterpillar:

- Provide (at Caterpillar's choice) new, remanufactured, or Caterpillar approved repaired parts or assembled components needed to correct the defect.

**Note:** New, remanufactured, or Caterpillar approved replacement parts provided under the terms of this warranty are warranted for the remainder of the warranty period applicable to the product in which installed as if such parts were original components of that product. Items replaced under this warranty become the property of Caterpillar.

- Replace lubricating oil, filters, antifreeze, and other service items made unusable by the defect.
- Provide reasonable and customary labor needed to correct the defect.

## User Responsibilities

The user is responsible for:

- Providing proof of delivery date to the first user.

- Labor costs, except as stated under "Caterpillar Responsibilities."
- Transportation costs, except as stated under "Caterpillar Responsibilities."
- Premium or overtime labor costs.
- Parts shipping charges in excess of those that are considered usual and customary.
- Local taxes, if applicable.
- Costs to investigate complaints, unless the problem is caused by a defect in Caterpillar material or workmanship.
- Giving timely notice of a warrantable failure and promptly making the product available for repair.
- Performance of the required maintenance (including use of proper fuel, oil, lubricants, and coolant) and items replaced due to normal wear and tear.
- Allowing Caterpillar access to all electronically stored data.

## Limitations

Caterpillar is not responsible for:

- Failures resulting from any use or installation that Caterpillar judges improper.
- Failures resulting from attachments, accessory items, and parts not sold or approved by Caterpillar.
- Failures resulting from abuse, neglect, and/or improper storage or repair.
- Failures resulting from user's delay in making the product available after being notified of a potential product problem.
- Failures resulting from unauthorized repair or adjustments, and unauthorized fuel setting changes.

(Continued on the reverse side....)



This warranty covers every major component of the products. Claims under this warranty should be submitted to a place of business of a Cat dealer or other source approved by Caterpillar. For further information concerning either the location to submit claims or Caterpillar as the issuer of this warranty, write Caterpillar Inc., 100 N. E. Adams St., Peoria, IL USA 61629.

Caterpillar's obligations under this Limited Warranty are subject to, and shall not apply in contravention of, the laws, rules, regulations, directives, ordinances, orders, or statutes of the United States, or of any other applicable jurisdiction, without recourse or liability with respect to Caterpillar.

*A) For products operating outside of Australia, Fiji, Nauru, New Caledonia, New Zealand, Papua New Guinea, the Solomon Islands, and Tahiti, the following is applicable:*

NEITHER THE FOREGOING EXPRESS WARRANTY NOR ANY OTHER WARRANTY BY CATERPILLAR, EXPRESS OR IMPLIED, IS APPLICABLE TO ANY ITEM CATERPILLAR SELLS THAT IS WARRANTED DIRECTLY TO THE USER BY ITS MANUFACTURER.

THIS WARRANTY IS EXPRESSLY IN LIEU OF ANY OTHER WARRANTIES, EXPRESS OR IMPLIED, INCLUDING ANY WARRANTY OF MERCHANTABILITY OR FITNESS FOR A PARTICULAR PURPOSE, EXCEPT CATERPILLAR EMISSION-RELATED COMPONENTS WARRANTY FOR NEW ENGINES, WHERE APPLICABLE. REMEDIES UNDER THIS WARRANTY ARE LIMITED TO THE PROVISION OF MATERIAL AND SERVICES, AS SPECIFIED HEREIN.

CATERPILLAR IS NOT RESPONSIBLE FOR INCIDENTAL OR CONSEQUENTIAL DAMAGES.

CATERPILLAR EXCLUDES ALL LIABILITY FOR OR ARISING FROM ANY NEGLIGENCE ON ITS PART OR ON THE PART OF ANY OF ITS EMPLOYEES, AGENTS, OR REPRESENTATIVES IN RESPECT OF THE MANUFACTURE OR SUPPLY OF GOODS OR THE PROVISION OF SERVICES RELATING TO THE GOODS.

IF OTHERWISE APPLICABLE, THE VIENNA CONVENTION ON CONTRACTS FOR THE INTERNATIONAL SALE OF GOODS IS EXCLUDED IN ITS ENTIRETY.

*B) For products operating in Australia, Fiji, Nauru, New Caledonia, New Zealand, Papua New Guinea, the Solomon Islands, and Tahiti, the following is applicable:*

THIS WARRANTY IS IN ADDITION TO WARRANTIES AND CONDITIONS IMPLIED BY STATUTE AND OTHER STATUTORY RIGHTS AND OBLIGATIONS THAT BY ANY APPLICABLE LAW CANNOT BE EXCLUDED, RESTRICTED OR MODIFIED ("MANDATORY RIGHTS"). ALL OTHER WARRANTIES OR CONDITIONS, EXPRESS OR IMPLIED (BY STATUTE OR OTHERWISE), ARE EXCLUDED, WITHOUT LIMITING THE FOREGOING PROVISIONS OF THIS PARAGRAPH, WHERE A PRODUCT IS SUPPLIED FOR BUSINESS PURPOSES, THE CONSUMER GUARANTEES UNDER THE CONSUMER GUARANTEES ACT 1993 (NZ) WILL NOT APPLY.

NEITHER THIS WARRANTY NOR ANY OTHER CONDITION OR WARRANTY BY CATERPILLAR, EXPRESS OR IMPLIED (SUBJECT ONLY TO THE MANDATORY RIGHTS), IS APPLICABLE TO ANY ITEM CATERPILLAR SELLS THAT IS WARRANTED DIRECTLY TO THE USER BY ITS MANUFACTURER.

IF THE MANDATORY RIGHTS MAKE CATERPILLAR LIABLE IN CONNECTION WITH SERVICES OR GOODS, THEN TO THE EXTENT PERMITTED UNDER THE MANDATORY RIGHTS, THAT LIABILITY SHALL BE LIMITED AT CATERPILLAR'S OPTION TO (a) IN THE CASE OF SERVICES, THE SUPPLY OF THE SERVICES AGAIN OR THE PAYMENT OF THE COST OF HAVING THE SERVICES SUPPLIED AGAIN AND (b) IN THE CASE OF GOODS, THE REPAIR OR REPLACEMENT OF THE GOODS, THE SUPPLY OF EQUIVALENT GOODS, THE PAYMENT OF THE COST OF SUCH REPAIR OR REPLACEMENT OR THE ACQUISITION OF EQUIVALENT GOODS.

CATERPILLAR EXCLUDES ALL LIABILITY FOR OR ARISING FROM ANY NEGLIGENCE ON ITS PART OR ON THE PART OF ANY OF ITS EMPLOYEES, AGENTS OR REPRESENTATIVES IN RESPECT OF THE MANUFACTURE OR SUPPLY OF GOODS OR THE PROVISION OF SERVICES RELATING TO THE GOODS.

CATERPILLAR IS NOT LIABLE FOR INCIDENTAL OR CONSEQUENTIAL DAMAGES UNLESS IMPOSED UNDER MANDATORY RIGHTS. IF OTHERWISE APPLICABLE, THE VIENNA CONVENTION (CONTRACTS FOR THE INTERNATIONAL SALE OF GOODS) IS EXCLUDED IN ITS ENTIRETY.

*C) For products supplied in Australia:*

IF THE PRODUCTS TO WHICH THIS WARRANTY APPLIES ARE:

I. PRODUCTS OF A KIND ORDINARILY ACQUIRED FOR PERSONAL, DOMESTIC OR HOUSEHOLD USE OR CONSUMPTION; OR

II. PRODUCTS THAT COST AUD 40,000 OR LESS,

WHERE THOSE PRODUCTS WERE NOT ACQUIRED FOR THE PURPOSE OF RE-SUPPLY OR FOR THE PURPOSE OF USING THEM UP OR TRANSFORMING THEM IN THE COURSE OF PRODUCTION OR MANUFACTURE OR IN THE COURSE OF REPAIRING OTHER GOODS OR FIXTURES, THEN THIS SECTION C APPLIES.

THE FOLLOWING MANDATORY TEXT IS INCLUDED PURSUANT TO THE AUSTRALIAN CONSUMER LAW AND INCLUDES REFERENCES TO RIGHTS THE USER MAY HAVE AGAINST THE DIRECT SUPPLIER OF THE PRODUCTS; OUR GOODS COME WITH GUARANTEES THAT CANNOT BE EXCLUDED UNDER THE AUSTRALIAN CONSUMER LAW. YOU ARE ENTITLED TO A REPLACEMENT OR REFUND FOR A MAJOR FAILURE AND COMPENSATION FOR ANY OTHER REASONABLY FORESEEABLE LOSS OR DAMAGE. YOU ARE ALSO ENTITLED TO HAVE THE GOODS REPAIRED OR REPLACED IF THE GOODS FAIL TO BE OF ACCEPTABLE QUALITY AND THE FAILURE DOES NOT AMOUNT TO A MAJOR FAILURE. THE INCLUSION OF THIS TEXT DOES NOT CONSTITUTE ANY REPRESENTATION OR ACCEPTANCE BY CATERPILLAR OF LIABILITY TO THE USER OR ANY OTHER PERSON IN ADDITION TO THAT WHICH CATERPILLAR MAY HAVE UNDER THE AUSTRALIAN CONSUMER LAW.

TO THE EXTENT THE PRODUCTS FALL WITHIN THIS SECTION C BUT ARE NOT OF A KIND ORDINARILY ACQUIRED FOR PERSONAL, DOMESTIC OR HOUSEHOLD USE OR CONSUMPTION, CATERPILLAR LIMITS ITS LIABILITY TO THE EXTENT IT IS PERMITTED TO DO SO UNDER THE AUSTRALIAN CONSUMER LAW TO, AT ITS OPTION, THE REPAIR OR REPLACEMENT OF THE PRODUCTS, THE SUPPLY OF EQUIVALENT PRODUCTS, OR THE PAYMENT OF THE COST OF SUCH REPAIR OR REPLACEMENT OR THE ACQUISITION OF EQUIVALENT PRODUCTS.

THE WARRANTY SET OUT IN THIS DOCUMENT IS GIVEN BY CATERPILLAR INC. OR ANY OF ITS SUBSIDIARIES, 100 N. E. ADAMS ST. PEORIA, IL USA 61629, TELEPHONE 1 309 675 1000, THE USER IS RESPONSIBLE FOR ALL COSTS ASSOCIATED WITH MAKING A CLAIM UNDER THE WARRANTY SET OUT IN THIS DOCUMENT, EXCEPT AS EXPRESSLY STATED OTHERWISE IN THIS DOCUMENT, AND THE USER IS REFERRED TO THE BALANCE OF THE DOCUMENT TERMS CONCERNING CLAIM PROCEDURES, CATERPILLAR RESPONSIBILITIES AND USER RESPONSIBILITIES.

TO THE EXTENT PERMISSIBLE BY LAW, THE TERMS SET OUT IN THE REMAINDER OF THIS WARRANTY DOCUMENT (INCLUDING SECTION B) CONTINUE TO APPLY TO PRODUCTS TO WHICH THIS SECTION C APPLIES.

©2014 Caterpillar. All Rights Reserved. CAT, CATERPILLAR, their respective logos, "Caterpillar Yellow," the "Power Edge" trade dress as well as corporate and product identity used herein, are trademarks of Caterpillar and may not be used without permission.



# CONTROL YOUR COSTS MINIMIZE YOUR RISKS

This plan safeguards your investments in new, used and rebuilt machines beyond the standard warranty period. It includes all parts and labor to protect you against failures caused by defects in materials and workmanship. With the Powertrain Equipment Protection Plan, you can increase the predictability of service and maintenance costs—and reduce unplanned downtime.

## WHAT WE DO

- Perform necessary inspections to confirm eligibility
- Install parts approved by Caterpillar on covered repairs
- Validate your enrollment in the program

## WHAT YOU DO

- Operate equipment according to the Cat Operation & Maintenance Manual (OMM)
- Have recommended preventive maintenance performed at intervals specified in the OMM
- Upon request, provide proof of preventive maintenance compliance (receipts, copies of work orders, invoices)
- Promptly provide the machine for repair in the event of a covered failure

## EXCLUSIONS

If a component is not listed, it may not be included in the plan. Other exclusions include:

- > Improper or abusive use of the machine
  - > Lubricating oil, antifreeze, filters, consumables and other maintenance items replaced during the covered component repair, unless such items are rendered unusable by a covered component failure
  - > Failures caused by normal wear-out
  - > Freight charges for parts shipments
  - > Travel time and mileage involved in getting to a job site
  - > Hauling costs and / or retrieval costs
  - > Overtime labor costs
  - > Repair costs resulting from the failure of any non-covered components
  - > Downtime loss
  - > Equipment rental charges
  - > Any incidental / consequential damages or costs incurred as a result of a covered component failure.
  - > Modifications unless approved by Caterpillar
- Examples of covered and excluded components or items are listed here. The actual dealer contract will govern. For a complete list of included components and more information on Cat Equipment Protection Plans, contact your local Cat dealer.**

### Camshaft & Camshaft Bearings

Timing / Accessory Gears  
Timing Chain / Belt  
Inlet / Exhaust Valve  
Valve Cover & Base  
Valve Spring & Guide  
Rocker Arm  
Rocker Shaft Assembly  
Push Rod  
Balancer  
Fuel Pump / Governor Drive  
Oil Pump  
Oil Pan Group  
Fan & Fan Drive

Hydrostatic Pumps &  
Drive Motors  
Linkage / lines Connected to  
Hystat Pump  
Drive (pilot / eh) Control Valves  
Bevel and Transfer Case

### Engine - Internal Components

Oil Cooler  
Manifolds  
Fan Motor  
Water Pump  
Fuel Injection Pumps  
Injectors  
Lift / Transfer Pump  
Senders / Solenoids / Sensors  
Thermostat  
Flywheel & Torque Converter  
Engine Oil Filter Mount  
Turbocharger  
AC Compressor / Condenser  
Electronic Control Modules  
Oil Hoses / Lines (non-hydrostatic)  
Cylinder Block  
Piston  
Piston Rings  
Piston & Connecting Rod  
Crankshaft, Main Bearings & Rod Bearings

### Drive Shaft/Transfer Case

Axles  
Axle Seals  
Final Drive & Wheel  
Final Drive Case / Bore  
Final Drive Chain  
Final Drive Gears  
Axle Shaft  
Drive Axle Oil Pump

### Transmissions

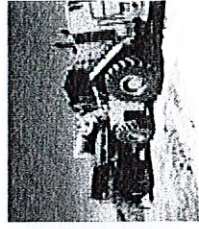
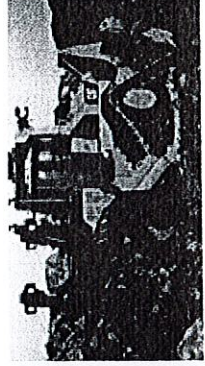
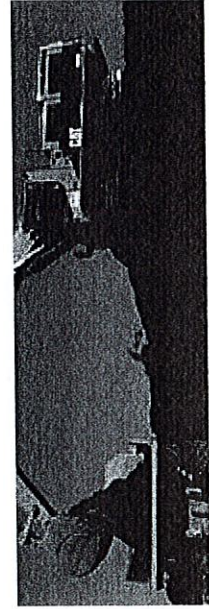
Transmissions  
Hydraulic Controls  
Transmission Oil Filter-Base  
Transmission Gears  
Final Drives/Planetary  
Drive Shafts  
Transfer Case

### Subframe

Steering Clutch  
Steering Clutch & Brake Control Valve

### Hydraulic Systems

Hydraulic Oil Coolers







Click any for help

[Home](#)

[My Cases](#)

[New Case](#)

[View Cases](#)

[Search Cases](#)

[My Profile](#)

[Edit Profile](#)

[Change Password](#)

[Change Security Questions](#)

[My Company](#)

[Edit Company Profile](#)

[Add New User](#)

[View Existing Users](#)

[Close Company Account](#)

[My Reports](#)

[View Reports](#)

[My Resources](#)

[View Essential Resources](#)

[Take Tutorial](#)

[View User Manual](#)

[Contact Us](#)

## Company Information

Company Name: Thompson Tractor Co., Inc.

[View / Edit](#)

Company ID Number: 47130

Doing Business As (DBA) Name:

DUNS Number:

### Physical Location:

Address 1: 2401 Pinson Highway

Address 2:

City: Birmingham

State: AL

Zip Code: 35217

County: JEFFERSON

### Mailing Address:

Address 1: P O. Box 10367

Address 2:

City: Birmingham

State: AL

Zip Code: 35202-0367

### Additional Information:

Employer Identification Number: 630377478

Total Number of Employees: 1,000 to 2,499

Parent Organization:

Administrator:

Organization Designation:

Employer Category:

NAICS Code: 423 - MERCHANT WHOLESALERS, DURABLE GOODS

[View / Edit](#)

Total Hiring Sites: 40

[View / Edit](#)

Total Points of Contact: 3

[View / Edit](#)

[View IDU](#)



Company ID Number: 47130

the Employer issues a tentative nonconfirmation based upon a photo non-match. The Employer will determine whether the employee contests the tentative nonconfirmation as soon as possible after the Employer receives it.

4. If the employee contests a tentative nonconfirmation issued by DHS, the Employer will provide the employee with a referral letter and instruct the employee to contact the Department through its toll-free hotline within 8 Federal Government work days.

5. If the employee contests a tentative nonconfirmation based upon a photo non-match, the Employer will provide the employee with a referral letter to DHS. DHS will electronically transmit the result of the referral to the Employer within 10 Federal Government work days of the referral unless it determines that more than 10 days is necessary.

6. The Employer agrees that if an employee contests a tentative nonconfirmation based upon a photo non-match, the Employer will send a copy of the employee's Form I-551 or Form I-766 to DHS for review by:

- Scanning and uploading the document, or
- Sending a photocopy of the document by an express mail account (furnished and paid for by DHS).

7. The Employer understands that if it cannot determine whether there is a photo match/non-match, the Employer is required to forward the employee's documentation to DHS by scanning and uploading, or by sending the document as described in the preceding paragraph, and resolving the case as specified by the Immigration Services Verifier at DHS who will determine the photo match or non-match.

#### ARTICLE IV

##### **SERVICE PROVISIONS**

The SSA and DHS will not charge the Employer for verification services performed under this MOU. The Employer is responsible for providing equipment needed to make inquiries. To access the E-Verify System, an Employer will need a personal computer with Internet access.

#### ARTICLE V

##### **PARTIES**

This MOU is effective upon the signature of all parties, and shall continue in effect for as long as the SSA and DHS conduct the E-Verify program unless modified in writing by the mutual consent of all parties, or terminated by any party upon 30 days prior written notice to the others. Any and all system enhancements to the E-Verify program by DHS or SSA, including but not limited to the E-Verify checking against additional data sources and instituting new verification procedures, will be covered under this MOU and will not cause the need for a supplemental MOU that outlines these changes. DHS agrees to train employers on all changes made to E-Verify through the use of mandatory refresher tutorials and updates to the E-Verify manual. Even





**Request for Taxpayer  
Identification Number and Certification**

Give form to the requester. Do not send to the IRS.

Print or type  
See Specific Instructions on page 2.

Name (as shown on your income tax return) <b>Thompson Tractor Co., Inc. DBA Thompson Power Systems, Thompson Lift Truck Co.</b>	
Business name, if different from above <b>and The Cat Rent Store</b>	
Check appropriate box: <input type="checkbox"/> Individual/Sole proprietor <input checked="" type="checkbox"/> Corporation <input type="checkbox"/> Partnership <input type="checkbox"/> Limited liability company. Enter the tax classification (D=disregarded entity, C=corporation, P=partnership) ▶ ..... <input checked="" type="checkbox"/> Exempt payee <input type="checkbox"/> Other (see instructions) ▶	
Address (number, street, and apt. or suite no.) <b>P O Box 10367 2401 Pinson Hwy. Tarrant, AL 35217</b>	Requester's name and address (optional)
City, state, and ZIP code <b>Birmingham, AL 35202-0367</b>	
List account number(s) here (optional) <b>Lockbox Remit To: P O Box 934005, Atlanta, GA 31193-4005</b>	

**Part I Taxpayer Identification Number (TIN)**

Enter your TIN in the appropriate box. The TIN provided must match the name given on Line 1 to avoid backup withholding. For individuals, this is your social security number (SSN). However, for a resident alien, sole proprietor, or disregarded entity, see the Part I instructions on page 3. For other entities, it is your employer identification number (EIN). If you do not have a number, see *How to get a TIN* on page 3.

Social security number : : :
or
Employer identification number <b>63 : 0377478</b>

Note. If the account is in more than one name, see the chart on page 4 for guidelines on whose number to enter.

**Part II Certification**

Under penalties of perjury, I certify that:

1. The number shown on this form is my correct taxpayer identification number (or I am waiting for a number to be issued to me), and
2. I am not subject to backup withholding because: (a) I am exempt from backup withholding, or (b) I have not been notified by the Internal Revenue Service (IRS) that I am subject to backup withholding as a result of a failure to report all interest or dividends, or (c) the IRS has notified me that I am no longer subject to backup withholding, and
3. I am a U.S. citizen or other U.S. person (defined below).

**Certification Instructions.** You must cross out item 2 above if you have been notified by the IRS that you are currently subject to backup withholding because you have failed to report all interest and dividends on your tax return. For real estate transactions, item 2 does not apply. For mortgage interest paid, acquisition or abandonment of secured property, cancellation of debt, contributions to an individual retirement arrangement (IRA), and generally, payments other than interest and dividends, you are not required to sign the Certification, but you must provide your correct TIN. See the Instructions on page 4.

<b>Sign Here</b>	Signature of U.S. person ▶ <i>Linda K. Dunbar, Controller</i>	Date ▶
------------------	---	--------

**General Instructions**

Section references are to the Internal Revenue Code unless otherwise noted.

**Purpose of Form**

A person who is required to file an information return with the IRS must obtain your correct taxpayer identification number (TIN) to report, for example, income paid to you, real estate transactions, mortgage interest you paid, acquisition or abandonment of secured property, cancellation of debt, or contributions you made to an IRA.

Use Form W-9 only if you are a U.S. person (including a resident alien), to provide your correct TIN to the person requesting it (the requester) and, when applicable, to:

1. Certify that the TIN you are giving is correct (or you are waiting for a number to be issued),
2. Certify that you are not subject to backup withholding, or
3. Claim exemption from backup withholding if you are a U.S. exempt payee. If applicable, you are also certifying that as a U.S. person, your allocable share of any partnership income from a U.S. trade or business is not subject to the withholding tax on foreign partners' share of effectively connected income.

Note. If a requester gives you a form other than Form W-9 to request your TIN, you must use the requester's form if it is substantially similar to this Form W-9.

Definition of a U.S. person. For federal tax purposes, you are considered a U.S. person if you are:

- An individual who is a U.S. citizen or U.S. resident alien.
- A partnership, corporation, company, or association created or organized in the United States or under the laws of the United States.
- An estate (other than a foreign estate), or
- A domestic trust (as defined in Regulations section 301.7701-7).

**Special rules for partnerships.** Partnerships that conduct a trade or business in the United States are generally required to pay a withholding tax on any foreign partners' share of income from such business. Further, in certain cases where a Form W-9 has not been received, a partnership is required to presume that a partner is a foreign person, and pay the withholding tax. Therefore, if you are a U.S. person that is a partner in a partnership conducting a trade or business in the United States, provide Form W-9 to the partnership to establish your U.S. status and avoid withholding on your share of partnership income.

The person who gives Form W-9 to the partnership for purposes of establishing its U.S. status and avoiding withholding on its allocable share of net income from the partnership conducting a trade or business in the United States is in the following cases:

- The U.S. owner of a disregarded entity and not the entity.