



FY 2024 County Transportation Plan

Chilton County

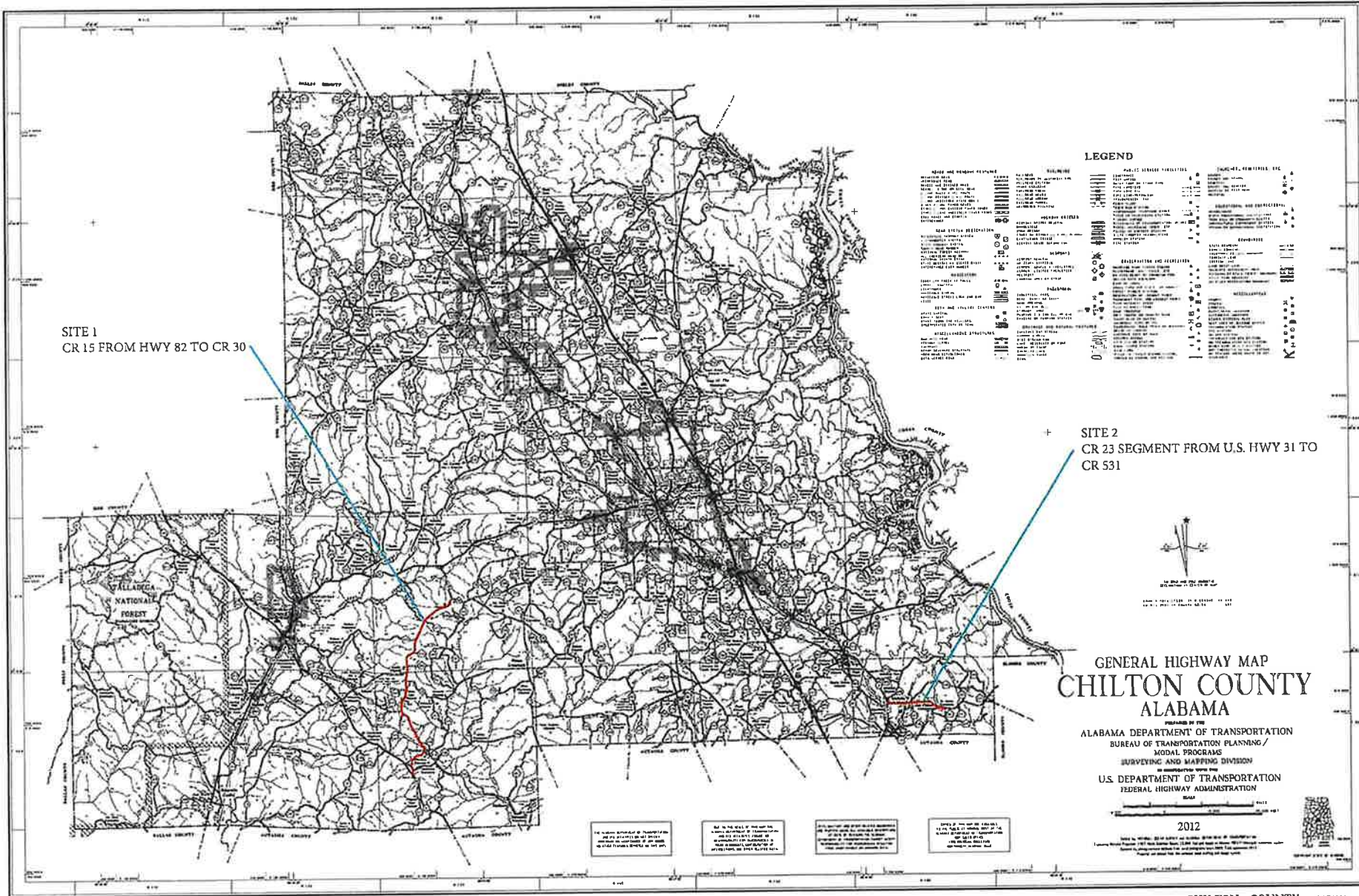


Date Approved by the Chilton County Commission: August 9, 2023

Map Index	Project No.	Road Name/Number	Begin		End		Project Details			Total Project Estimated Cost	Estimated Amount Planned To Be Utilized Under Competitive Bid	Estimated Amount Planned To Be Utilized Under Public Works	County Rebuild Alabama Funds or Federal Aid Exchange Funds (List fund type separately for projects involving both CRAFs and FAEFs)	CRAF Amount	FAEF Amount	
			Lat.	Long.	Lat.	Long.	Road Improvement Project	Bridge Improvement Project	Project Length (miles)							Description of Work
										Estimated Beginning Balance			\$1,370,000	\$0		
										Estimated Annual Revenue			\$930,000	\$400,000		
1	RA-CCP 11-640-23	CR 15	32.6908	-86.7956	32.7887	-86.7685	X		8.2	Widen, Resurface and Traffic Stripe from SR-82 to CR 30	\$2,000,000	\$2,000,000		CRAF/FAEF	\$1,600,000	\$400,000
2	RA-CCP 11-657-24	CR 23	32.7265	-89.4841	32.7230	-86.4458	X		2.3	Widen, Resurface and Traffic Stripe from SR-82 to CR 561	\$700,000	\$700,000		CRAF	\$700,000	\$0
Totals/Page Totals			Total Miles Addressed by CTP (Total Mileage Does Not Include Bridge Projects)					10.5	Total CTP Estimated Costs	\$2,700,000	\$2,700,000	\$0	Total CRAF/FAEF Remaining Estimated	\$0	\$0	

Note: Any amendments to the CTP shall follow the same guidelines and procedures as the original approval process.

Remarks Project RA-CCP 11-640-23 to be combined with \$350,000 RRR Funds for a total project cost of \$2,350,000



SITE 1
CR 15 FROM HWY 82 TO CR 30

SITE 2
CR 23 SEGMENT FROM U.S. HWY 31 TO
CR 531

LEGEND

ROAD AND HIGHWAY SYSTEMS	RAILROADS	POST OFFICE FACILITIES	TRAILS, ETC.
Interstate Highway	Class 1	Post Office	Trail
Class 2	Class 2	Post Office Annex	Trail
Class 3	Class 3	Post Office Branch	Trail
Class 4	Class 4	Post Office Substation	Trail
Class 5	Class 5	Post Office Station	Trail
Class 6	Class 6	Post Office Station	Trail
Class 7	Class 7	Post Office Station	Trail
Class 8	Class 8	Post Office Station	Trail
Class 9	Class 9	Post Office Station	Trail
Class 10	Class 10	Post Office Station	Trail
Class 11	Class 11	Post Office Station	Trail
Class 12	Class 12	Post Office Station	Trail
Class 13	Class 13	Post Office Station	Trail
Class 14	Class 14	Post Office Station	Trail
Class 15	Class 15	Post Office Station	Trail
Class 16	Class 16	Post Office Station	Trail
Class 17	Class 17	Post Office Station	Trail
Class 18	Class 18	Post Office Station	Trail
Class 19	Class 19	Post Office Station	Trail
Class 20	Class 20	Post Office Station	Trail
Class 21	Class 21	Post Office Station	Trail
Class 22	Class 22	Post Office Station	Trail
Class 23	Class 23	Post Office Station	Trail
Class 24	Class 24	Post Office Station	Trail
Class 25	Class 25	Post Office Station	Trail
Class 26	Class 26	Post Office Station	Trail
Class 27	Class 27	Post Office Station	Trail
Class 28	Class 28	Post Office Station	Trail
Class 29	Class 29	Post Office Station	Trail
Class 30	Class 30	Post Office Station	Trail
Class 31	Class 31	Post Office Station	Trail
Class 32	Class 32	Post Office Station	Trail
Class 33	Class 33	Post Office Station	Trail
Class 34	Class 34	Post Office Station	Trail
Class 35	Class 35	Post Office Station	Trail
Class 36	Class 36	Post Office Station	Trail
Class 37	Class 37	Post Office Station	Trail
Class 38	Class 38	Post Office Station	Trail
Class 39	Class 39	Post Office Station	Trail
Class 40	Class 40	Post Office Station	Trail
Class 41	Class 41	Post Office Station	Trail
Class 42	Class 42	Post Office Station	Trail
Class 43	Class 43	Post Office Station	Trail
Class 44	Class 44	Post Office Station	Trail
Class 45	Class 45	Post Office Station	Trail
Class 46	Class 46	Post Office Station	Trail
Class 47	Class 47	Post Office Station	Trail
Class 48	Class 48	Post Office Station	Trail
Class 49	Class 49	Post Office Station	Trail
Class 50	Class 50	Post Office Station	Trail
Class 51	Class 51	Post Office Station	Trail
Class 52	Class 52	Post Office Station	Trail
Class 53	Class 53	Post Office Station	Trail
Class 54	Class 54	Post Office Station	Trail
Class 55	Class 55	Post Office Station	Trail
Class 56	Class 56	Post Office Station	Trail
Class 57	Class 57	Post Office Station	Trail
Class 58	Class 58	Post Office Station	Trail
Class 59	Class 59	Post Office Station	Trail
Class 60	Class 60	Post Office Station	Trail
Class 61	Class 61	Post Office Station	Trail
Class 62	Class 62	Post Office Station	Trail
Class 63	Class 63	Post Office Station	Trail
Class 64	Class 64	Post Office Station	Trail
Class 65	Class 65	Post Office Station	Trail
Class 66	Class 66	Post Office Station	Trail
Class 67	Class 67	Post Office Station	Trail
Class 68	Class 68	Post Office Station	Trail
Class 69	Class 69	Post Office Station	Trail
Class 70	Class 70	Post Office Station	Trail
Class 71	Class 71	Post Office Station	Trail
Class 72	Class 72	Post Office Station	Trail
Class 73	Class 73	Post Office Station	Trail
Class 74	Class 74	Post Office Station	Trail
Class 75	Class 75	Post Office Station	Trail
Class 76	Class 76	Post Office Station	Trail
Class 77	Class 77	Post Office Station	Trail
Class 78	Class 78	Post Office Station	Trail
Class 79	Class 79	Post Office Station	Trail
Class 80	Class 80	Post Office Station	Trail
Class 81	Class 81	Post Office Station	Trail
Class 82	Class 82	Post Office Station	Trail
Class 83	Class 83	Post Office Station	Trail
Class 84	Class 84	Post Office Station	Trail
Class 85	Class 85	Post Office Station	Trail
Class 86	Class 86	Post Office Station	Trail
Class 87	Class 87	Post Office Station	Trail
Class 88	Class 88	Post Office Station	Trail
Class 89	Class 89	Post Office Station	Trail
Class 90	Class 90	Post Office Station	Trail
Class 91	Class 91	Post Office Station	Trail
Class 92	Class 92	Post Office Station	Trail
Class 93	Class 93	Post Office Station	Trail
Class 94	Class 94	Post Office Station	Trail
Class 95	Class 95	Post Office Station	Trail
Class 96	Class 96	Post Office Station	Trail
Class 97	Class 97	Post Office Station	Trail
Class 98	Class 98	Post Office Station	Trail
Class 99	Class 99	Post Office Station	Trail
Class 100	Class 100	Post Office Station	Trail

GENERAL HIGHWAY MAP
CHILTON COUNTY
ALABAMA

PREPARED BY THE
ALABAMA DEPARTMENT OF TRANSPORTATION
BUREAU OF TRANSPORTATION PLANNING/
MODAL PROGRAMS
SURVEYING AND MAPPING DIVISION
IN COOPERATION WITH THE
U.S. DEPARTMENT OF TRANSPORTATION
FEDERAL HIGHWAY ADMINISTRATION

2012



1. This map is a general highway map of Chilton County, Alabama, showing the principal roads and highways. It is not intended to show the exact location of any particular road or highway, but only the general location and direction of travel.

2. The map is based on the latest available data and is subject to change without notice. It is not intended to be used as a legal document or for any other purpose.

3. The map is prepared by the Alabama Department of Transportation, Bureau of Transportation Planning/Modal Programs, Surveying and Mapping Division, in cooperation with the U.S. Department of Transportation, Federal Highway Administration.

4. The map is copyrighted by the Alabama Department of Transportation, 2012. All rights reserved.