



FY 2024 County Transportation Plan

Pike County



Date Approved by the Pike County Commission: 08/28/2023

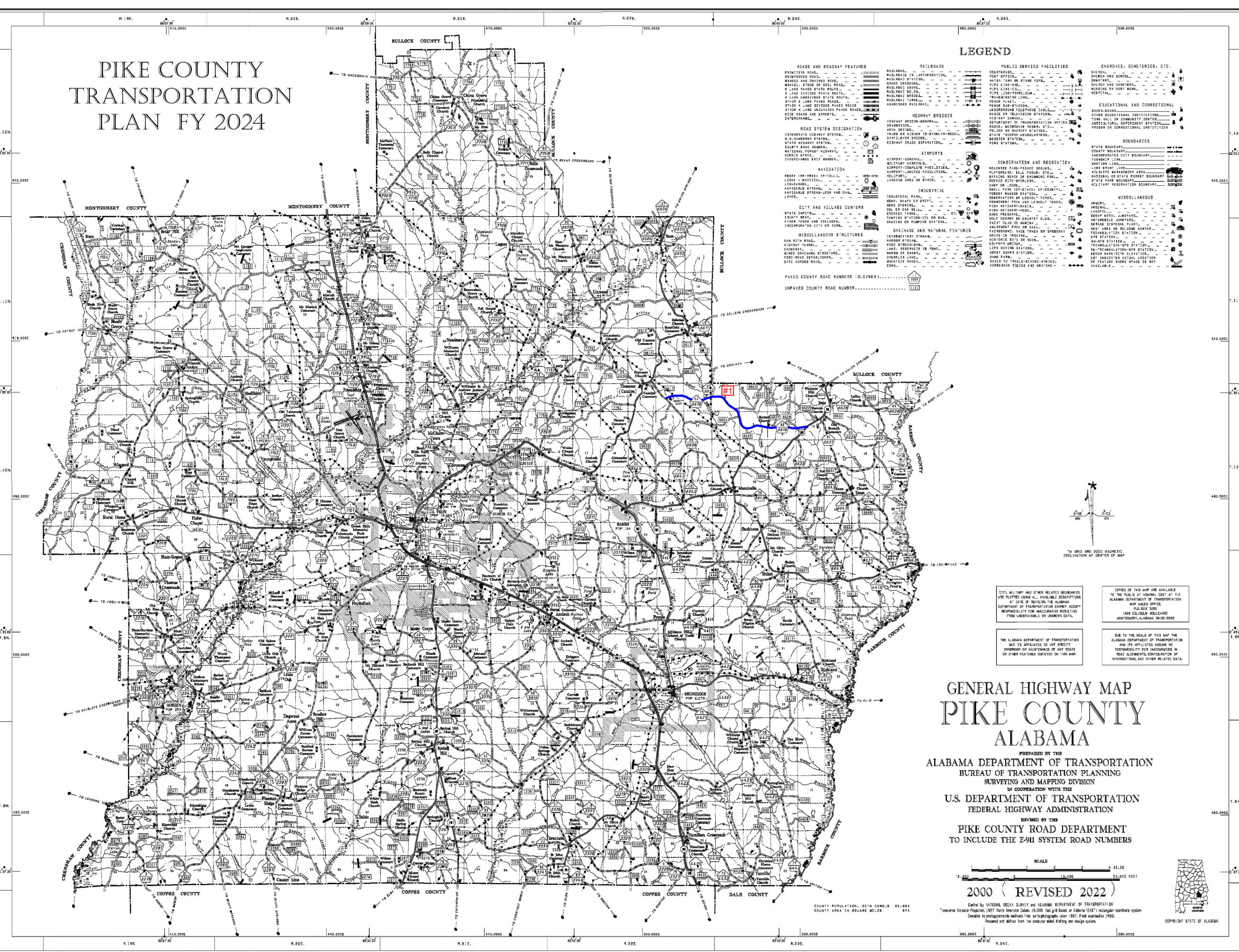
Date Amended by the Pike County Commission:

Map Index	Project No.	Road Name/Number	Begin		End		Project Details				Total Project Estimated Cost	Estimated Amount Planned To Be Utilized Under Competitive Bid	Estimated Amount Planned To Be Utilized Under Public Works	County Rebuild Alabama Funds or Federal Aid Exchange Funds <small>(List fund type separately for projects involving both CRAFs and FAEFs)</small>	CRAF Amount	FAEF Amount	
			Lat.	Long.	Lat.	Long.	Road Improvement Project	Bridge Improvement Project	Project Length (miles)	Description of Work							
Estimated Beginning Balance														\$10.00	\$0.00		
Estimated Annual Revenue														\$890,000.00	\$400,000.00		
1	RA-PCP-55-12-23	6618	31.8721*	-85.8190*	31.8575*	-88.7327*	X		5.86	RESURFACING & TRAFFIC STRIPING FROM CR6636 TO US 29	\$850,000.00	\$850,000.00	\$0.00	CRAF	\$450,000.00	\$400,000.00	
2	RA-PCP-55-13-19 THROUGH RA-PCP 55-06-20	VARIOUS	N/A	N/A	N/A	N/A	X			WARRANT P&I PAYMENTS FOR FY 2020 RESURFACING PROJECTS	\$393,936.00	\$393,936.00	\$0.00	CRAF	\$393,936.00	\$0.00	
3																	
4																	
									Total This Sheet =	5.86							
Total Miles Addressed by CTP <small>(Total Mileage Does Not Include Bridge Projects)</small>											This page Total CTP Estimated Costs	\$1,243,936.00	\$1,243,936.00	\$0.00	Total CRAF/FAEF Remaining Estimated	\$46,074.00	\$0.00

Note: Any amendments to the CTP shall follow the same guidelines and procedures as the original approval process.

Remarks _____

PIKE COUNTY TRANSPORTATION PLAN FY 2024



LEGEND

ROADS AND ROADWAY FEATURES

- PAVEMENT ROAD
- UNPAVED ROAD
- PAVED COUNTY ROAD NUMBER (O.G./NEW)
- UNPAVED COUNTY ROAD NUMBER

ROAD SYSTEM DESIGNATION

- INTERSTATE HIGHWAY SYSTEM
- U.S. HIGHWAY SYSTEM
- STATE HIGHWAY SYSTEM
- COUNTY ROAD NUMBER
- NATIONAL FOREST HIGHWAY
- INTER-STATE EXCH. NUMBER

NAVIGATION

- FERRY
- RAILROADS
- AIRPORTS
- INDUSTRIAL
- CONSERVATION AND RECREATION
- INDUSTRIAL
- INDUSTRIAL

PUBLIC SERVICE FACILITIES

- COURTHOUSE
- POST OFFICE
- WATER TANK OR STAND PIPE
- ELECTRIC LINE
- PHONE LINE
- POWER LINE
- RAILROAD
- AIRPORT
- INDUSTRIAL
- CONSERVATION AND RECREATION
- INDUSTRIAL
- INDUSTRIAL

MISCELLANEOUS STRUCTURES

- CHURCH
- CEMETERY
- SCHOOL
- HOSPITAL
- EDUCATIONAL AND CORRECTIONAL
- BOUNDARIES
- MISCELLANEOUS

GENERAL HIGHWAY MAP PIKE COUNTY ALABAMA

PREPARED BY THE
ALABAMA DEPARTMENT OF TRANSPORTATION
BUREAU OF TRANSPORTATION PLANNING
SURVEYING AND MAPPING DIVISION
IN COOPERATION WITH THE
U.S. DEPARTMENT OF TRANSPORTATION
FEDERAL HIGHWAY ADMINISTRATION

REVISED BY THE
PIKE COUNTY ROAD DEPARTMENT
TO INCLUDE THE E-911 SYSTEM ROAD NUMBERS



Compiled by NATIONAL OCEAN SURVEY and ALABAMA DEPARTMENT OF TRANSPORTATION
2000 Vertical Projection, 1927 North American Datum, 10,000 feet grid based on Alabama 1927 rectangular coordinate system
Controlled by photogrammetric methods from air-photographs taken 1927. Field measurements 1985.
Printed and plotted from the computer-aided drafting and design system.
COPYRIGHT STATE OF ALABAMA