

BID SUBMITTAL FORM
Alabama County Joint Bidding Program
BID ITEM – 130 HP HYDROSTATIC BULLDOZER – OPTION B

Company Name: THOMPSON TRACTOR COMPANY

Address: PO BOX 10367

BIRMINGHAM AL 35202-0367

Bid Submitted by: JAY SMITH
(Name of company representative)

Title: SALES OPERATIONS MANAGER E-mail address: jaysmith@thompsontractor.com

Phone: 205-849-4242 Fax: _____

By submitting this bid, we agree:

Initials

The equipment model number identified below meets the bid specs for this bid item.

JAS

That the bid price will be honored for all counties for the period from Jan. 1, 2024 to Dec. 31, 2024.

JAS

The equipment will be delivered at the bid price to all counties participating in the joint bid program.

JAS

The company representative listed above will be the contact person for purchasing this bid item under the joint bid program.

JAS

The bid is accompanied by a current catalog or model specification document for the model number identified below.

JAS

The bid is accompanied by a copy of the manufacturer's standard warranty as required in the bid specifications.

JAS

The bid includes the e-verify documentation required by Alabama law.

JAS

If awarded the bid, a performance bond will be provided upon request.

JAS

The bid documents include the **Manufacturer's Suggested Retail Price Sheet (MSRP) for the Standard Machine.**

JAS

130 HP HYDROSTATIC BULLDOZER – OPTION B

Total Bid Price for Standard Machine: \$ 245,521

(Total Bid Price for Standard Machine Includes Freight Preparation, Delivery and Standard Warranty Costs)*

Freight Preparation and Delivery: \$ 9,540
(Included in Standard Machine Bid Price)

Manufacturer's Suggested Retail Price for Standard Machine: \$ 327,752

Equipment Model #: CATERPILLAR D4

Description: TRACK TYPE TRACTOR

Signature of company representative submitting bid: _____



Title: SALES OPERATIONS MANAGER

* **NOTE:** Award will be made based on the total cost of the **Standard Machine**. The total cost of the standard machine is to include the freight preparation, delivery and standard warranty cost. Freight preparation, delivery will be excluded from the total bid price of the standard machine in determining the percentage discount for any available options.

**BID SUBMITTAL FORM: OPTION COST SHEET
130 HP HYDROSTATIC BULLDOZER – OPTION B**

By submitting this bid, we agree:

To offer any available options at the percent difference between the Manufacturer's Suggested Retail Price Sheet and the actual bid price on the Standard Machine*

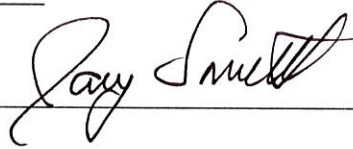


The bid documents include the Manufacturer's Suggested Retail Price Sheet (MSRP) with **any available Options** for the Standard Machine



Equipment Model #: CATERPILLAR D4

Description: TRACK TYPE TRACTOR

Signature of company representative submitting bid: 

Title: SALES OPERATIONS MANAGER

***Note:** The percent difference between the **Manufacturer's Suggested Retail Price Sheet (MSRP)** for the standard machine as specified by these **Bid Specifications** and the actual price bid by the vendor will be calculated to determine the percentage discount to be applied to any available options. The bid price of the freight preparation, delivery cost shall be excluded in determining the percentage discount to be applied to available options. Any individual county may choose to add any available option to the standard machine at the percentage discount at the time of purchase.

| | D4 LGP | 130 HP HYDROSTATIC BULLDOZER OPTION B | 2024 Pricing |
|----------|--------------------------------|---|------------------|
| 575-5171 | D4 LGP TRACTOR | | \$14,749 |
| 578-7519 | N.A. REGIONAL PACKAGE | | \$0 |
| 631-1014 | VPAT CONFIGURATION | | \$295,463 |
| 577-5974 | C4.4 TTA CATERPILLAR ENGINE | | \$0 |
| 577-5976 | LGP POWERTRAIN | | \$0 |
| 584-4810 | STANDARD AIR CLEANER | | \$0 |
| 431-7080 | HEAVY DUTY UNDERCARRIAGE | | \$0 |
| 379-3983 | 30" EXTREME SERVICE 30" SHOES | | \$3,371 |
| 368-9744 | CENTER TRACK GUIDING GUARD | | \$1,331 |
| 578-0532 | NO REAR HYDRAULIC PACKAGE | | \$0 |
| 579-0200 | STANDARD STARTER | | \$0 |
| 566-5453 | DEMAND FAN | | \$0 |
| 465-5604 | STANDARD STARTER | | \$0 |
| 536-9447 | 6 HALOGEN LIGHTS | | \$0 |
| 616-4855 | STANDARD CAB | | \$0 |
| 581-1606 | REAR VIEW CAMERA | | \$0 |
| 631-1016 | GRADE CONTROL W/ ASSIST | | \$0 |
| 638-1169 | CELLULAR PLE743 PRODUCT LINK | | \$0 |
| 585-3842 | STANDARD FUEL TANK | | \$0 |
| 578-7619 | FRONT PROTECTION PACKAGE | | \$760 |
| 578-3046 | DRAWBAR | | \$0 |
| 525-6315 | STANDARD HYDRAULIC OIL | | \$0 |
| 0P-3940 | CYLINDER ROD PROTECTION | | \$0 |
| 0P-1940 | WINDSHIELD WASHER | | \$0 |
| 421-8926 | TECHNICAL MEDIA KIT | | \$0 |
| 585-5659 | STANDARD AM/FM BLUETOOTH RADIO | | \$745 |
| 582-6695 | 145" ACCUGRADE READY LGP BLADE | | \$11,332 |
| 0P-3978 | FUEL ANTIFREEZE | | \$0 |
| | | | |
| | | TOTAL BID PRICE FOR STANDARD MACHINE | \$245,521 |
| | | | |
| | | FREIGHT PREPARATION AND DELIVERY | \$9,540 |
| | | | |
| | | TOTAL MANUFACTURER'S SUGGESTED RETAIL PRICE FOR STANDARD MACHINE | \$327,752 |

BID SPECIFICATIONS FOR 130 HP HYDROSTATIC BULLDOZER – OPTION B

GENERAL

These specifications shall be construed as the minimum acceptable standards for a 125 hp hydrostatic bulldozer. Should the manufacturer's current published data or specifications exceed these standards, the manufacturer's standards shall be considered minimum and shall be furnished. All integral parts not specifically mentioned in the scope of these specifications that are necessary to provide a complete working unit shall be furnished. Additionally, the machine offered for bid shall include all standard manufacturer's equipment. The bulldozers must be a new current production model and shall meet all EPA and other applicable standards at the time of manufacture.

The use of specific names and numbers in the specifications is not intended to restrict the bidder or any seller or manufacturer, but is intended solely for the purpose of indicating the type, size and quality of equipment considered best adapted to the uses of counties participating in this joint bid.

BID SUBMITTAL FORM

Each bidder must submit his or her bid on the Bid Submittal Form included in the invitation to bid package. All written warranties to be submitted shall be attached to the Bid Submittal Form.

BID PRICE

The price bid shall include all destination charges, delivery charges, title fees, rebates, and all other applicable costs and refunds.

MANUALS

Each unit shall be provided with one (1) copy of the operator's manual and one (1) copy of the current parts manual. Units will not be accepted for delivery until the manuals as outlined above are received by the purchaser.

REPLACEMENT PARTS AVAILABILITY

Parts must be available for 5 years or 7,500 hours of use for the piece of equipment bid. If replacement parts are not delivered within three (3) working days of an order being placed, the bidder will deliver an equivalent machine for the county to use at no cost to the county until such time as the parts are delivered to the county so it can affect repairs to its machine.

WARRANTY

Bidders shall submit a copy of the manufacturer's standard warranty. Warranty shall include service response time of maximum of 36 hours within notification by county.

Yes X No
Page#
or
Attachment X

ENGINE

Shall be a turbocharged diesel engine with a displacement of not less than **260 cubic inches**, capable of developing a minimum of **130 net** flywheel horsepower (SAE J1349).

Yes ☒ No ☐
Page # 1, 14

Engine shall be manufactured by the equipment manufacturer.

Yes ☒ No ☐
Page # 1, 14

WEIGHT

Operating weight with blade, operator, full fuel tank, and ROPS canopy shall not be less than **30,500 lbs.**

Yes ☒ No ☐
Page # 14

ELECTRICAL SYSTEM

Shall be equipped with a minimum **100-amp** alternator.

Yes ☒ No ☐
Page # 15

TRANSMISSION

Shall be equipped with a hydrostatic type transmission.

Yes ☒ No ☐
Page # 15

STEERING

All steering functions must be able to be performed using one hand only.

Yes ☒ No ☐
Page # 10

UNDERCARRIAGE

The tractor shall be equipped with sealed and lubricated tracks. Minimum shoe width shall be **30 inches**. Track sag shall be hydraulically adjusted.

Yes ☒ No ☐
Page # 14

Ground bearing pressure shall not exceed **4.5 lbs/sq. inch**.

Yes ☒ No ☐
Page # 14

BLADE

The machine shall be equipped with a six-way (pat) blade with a minimum capacity of **4.8 cubic yards**.

Yes ☒ No ☐
Page # 14

VANDALISM PROTECTION

Machine shall be equipped with all standard and optional factory vandalism protection available for the machine bid.

Yes ☒ No ☐
Page # 14, 15

SAFETY EQUIPMENT

Gauges and indicators shall be provided to monitor critical (fuel level, coolant temperature, powertrain oil temperature, and hydraulic oil temperature) operational systems of the machine and alert the operator when potential problems occur.

Yes X No
Page # 15

Rear view mirror; backup alarm.

Yes X No
Page # 15

Heavy duty hinged radiator guard

Yes X No
Page # 15

Crankcase guard

Yes X No
Page # 15

Track center guiding guard

Yes X No
Page # 15

Pre-cleaner guard

UNDER HOOD

Yes X No
Page # 1, 15

Front tow hooks

Yes X No
Page # 15

Heavy duty rear drawbar

Yes X No
Page # 15

Fire extinguisher

Yes X No
Page # VENDOR

Water separator

Yes X No
Page # 15

THE NEW CAT® D4

SEE A BETTER BOTTOM LINE

The versatile new Cat® D4 Dozer offers the power and precision to get jobs done quickly, plus gives you up to 30 percent more visibility in front of the blade. Easy-to-use technology features help you get more quality work done in less time. Fuel efficiency and service improvements help reduce your operating costs.



GAIN THE COMPETITIVE EDGE

An unprecedented choice of technology features help make your job easier.

- + Grade technologies help you hit target grade faster and more accurately. Save time and material, plus help operators of varied experience levels work more efficiently.
- + Link technologies connect you to your machines to help save time and money on service, not to mention added convenience.
- + Operator assist features work behind the scenes to help make machine operation easier.

D4

TRACK-TYPE TRACTOR



Net Power (2,100 rpm)
ISO 9249/SAE J1349
ISO 9249/SAE J1349 (DIN)

97 kW (130 hp)
132 mhp

Operating Weight

D4 13 272 kg (29,259 lb)
D4 LGP 14 008 kg (30,882 lb)

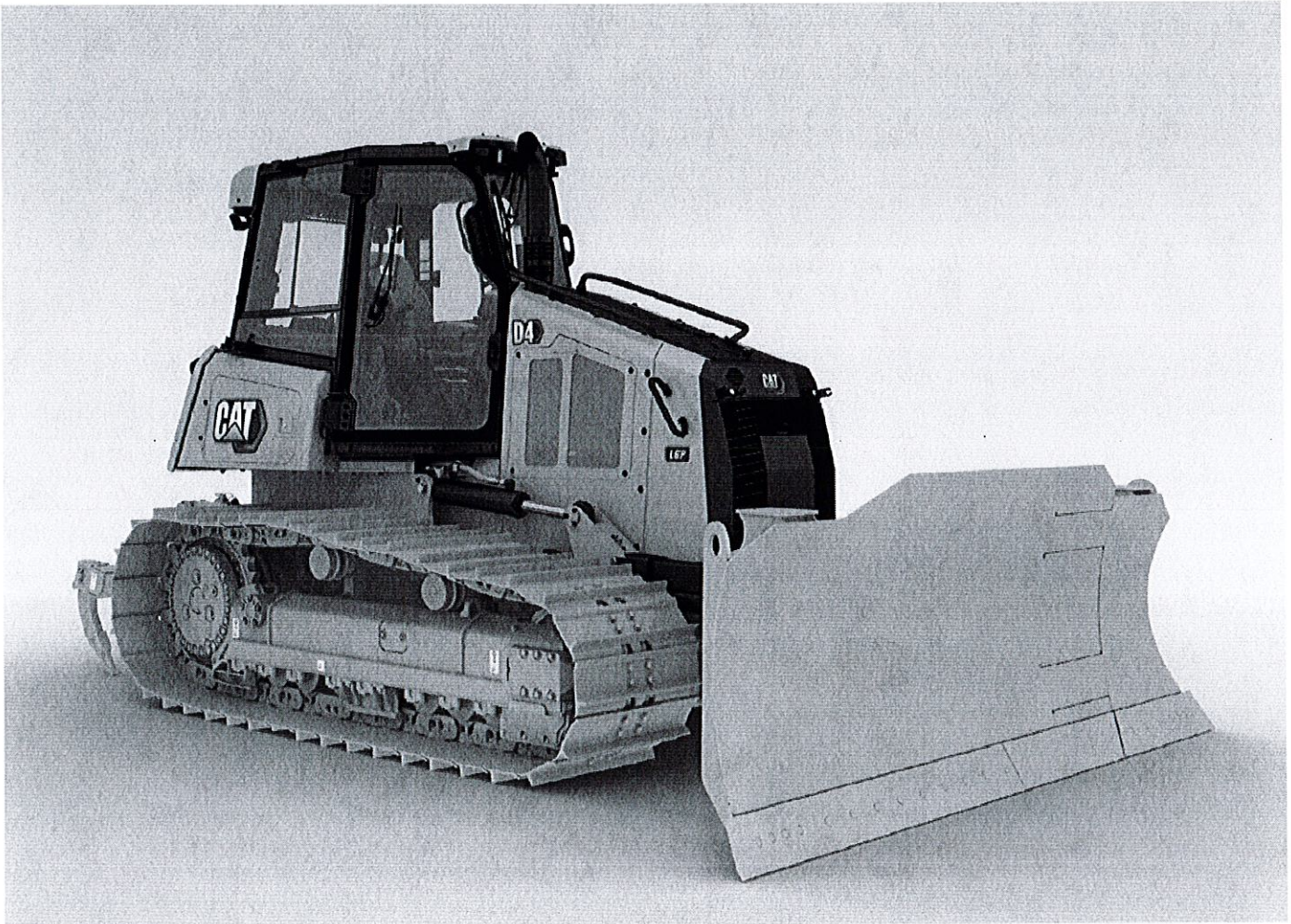
Cat® C4.4 Engine meets U.S. EPA Tier 4 Final/EU Stage V/Japan 2014/Korea Tier 4 Final emission standards.

CAT®

THE NEW CAT® D4

SEE A BETTER BOTTOM LINE

The versatile new Cat® D4 Dozer offers the power and precision to get jobs done quickly, plus gives you up to 30 percent more visibility in front of the blade. Easy-to-use technology features help you get more quality work done in less time. Fuel efficiency and service improvements help reduce your operating costs.



GAIN THE COMPETITIVE EDGE

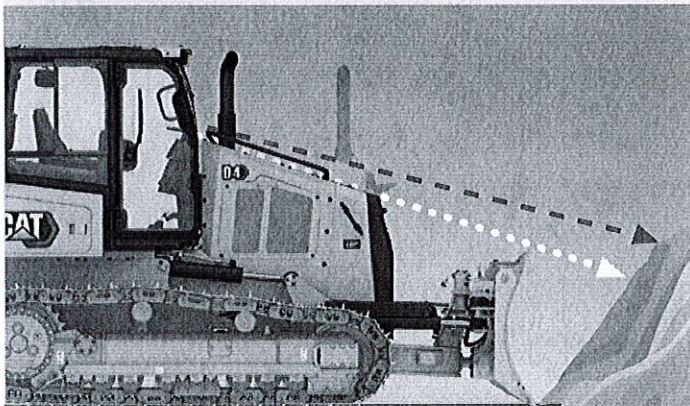
An unprecedented choice of technology features help make your job easier.

- + Grade technologies help you hit target grade faster and more accurately. Save time and material, plus help operators of varied experience levels work more efficiently.
- + Link technologies connect you to your machines to help save time and money on service, not to mention added convenience.
- + Operator assist features work behind the scenes to help make machine operation easier.



A BETTER VIEW

Lower sloping hood line = **about 30% better visibility** to the work area in front of the blade.



SHORTER SIGHT LINE GETS YOU ABOUT 40% CLOSER TO THE PILE FOR FASTER CYCLE TIMES.

NEW D4>
PREVIOUS MODEL D6K/D6K2/D4>

UP TO 30% BETTER FORWARD VISIBILITY

Work more efficiently – lower sloping hood line for better visibility to the area in front of the blade.

UP TO 50% MORE PRODUCTIVITY WITH CAT TECHNOLOGY

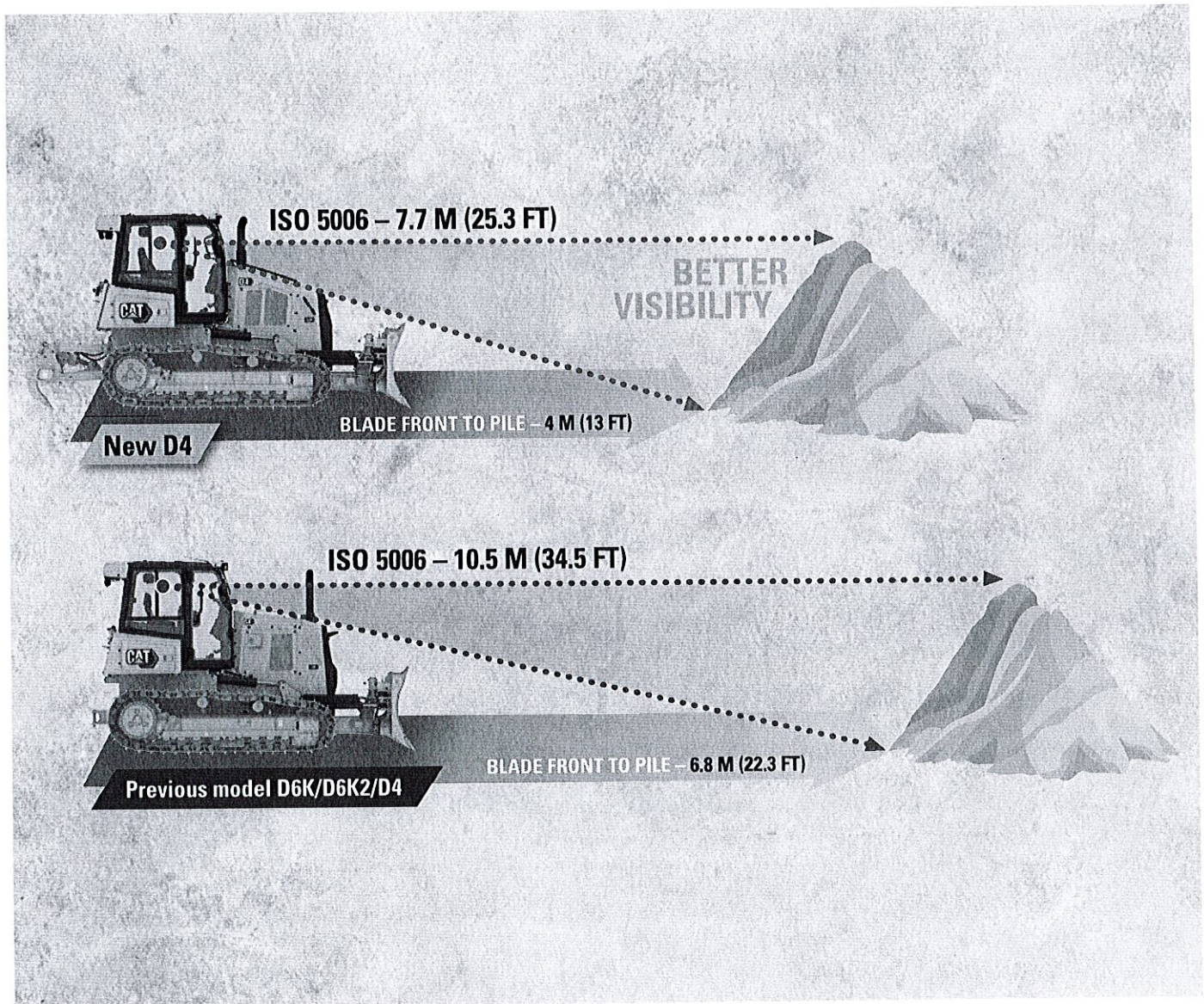
Industry leading technology choices to help operators of varied experience levels work better, faster and safer.

LOWER OPERATING COSTS

Lower maintenance costs, longer service intervals help you save time and money.

BETTER SIGHT LINES ENJOY THE VIEW

Get a better view of the work at hand with a lower sloping hood line that gives you up to 30 percent better visibility to the area in front of the blade.



WORK FASTER

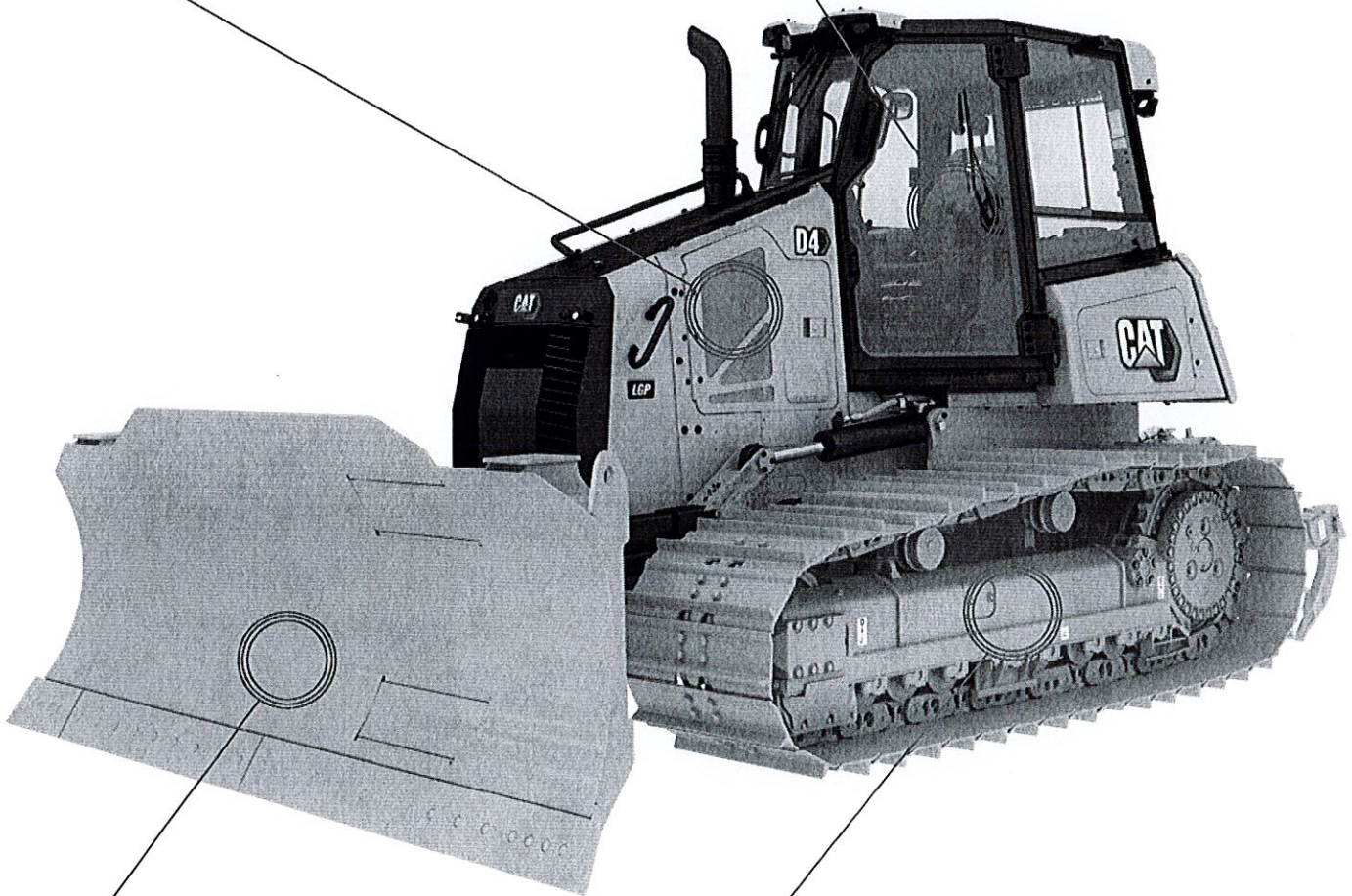
Shorter sight lines mean you won't have to back up as much to get a full view of the material. With the visual distance between the front of your blade and the pile shortened by about 40 percent, you'll spend less time in reverse and get the job done faster.

POWERFUL

Cat C4.4 engine with twin turbochargers combined with a hydrostatic transmission gives you excellent fuel efficiency and the most power-dense drive train in its size class.

AGILE

Superior maneuverability, fast steering response gives you the agility to get the job done quickly.



VERSATILE

Variable Pitch Angle Tilt (VPAT) blade gives you the width and capacity to move material, as well as the finesse you need for smooth finish grades. Foldable VPAT option available for narrower transport width.

BALANCED

The undercarriage design, with eight bottom rollers and two carrier rollers, is optimized for smooth finish grading and a better ride, even at faster grading speeds.

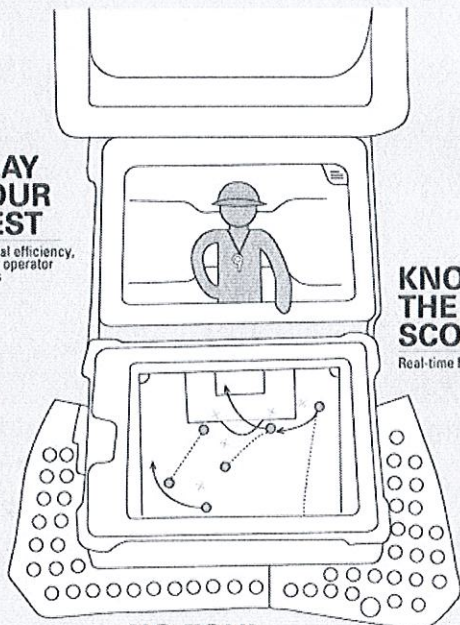
GAIN THE COMPETITIVE EDGE



CAT TECHNOLOGY IS LIKE HAVING A COACH IN THE CAB

PLAY YOUR BEST

Optimal efficiency,
fewer operator
inputs



KNOW THE SCORE

Real-time Feedback

NO FOUL

Save rework, time, materials

An unprecedented selection of technology choices help you make the most of your equipment investment.

- + Grade technology options help operators of varied skill levels hit target grade faster and more accurately.
- + Operator assist technologies work behind the scenes to help make machine operation easier.
- + Cab offers optimal interior mounting locations that make it simple to install the grade control system of your choice.
- + All Cat Grade systems are compatible with radios and base stations from Trimble, Topcon and Leica.
- + Link technologies, remote services and tools like the Cat App help connect you to your equipment to help save time and money on service and maintenance.

CAT GRADE TECHNOLOGY

BOOST YOUR PRODUCTIVITY



NO GPS SIGNAL? NO PROBLEM

Cat Grade with Slope Assist™ automatically maintains operator's pre-established blade position without a GPS signal. Put it to work building pads, creating simple design plans on-the-go or working where GPS is unavailable. Slope Assist works seamlessly alongside 3D GPS systems.

FIRST PASS TO FINISH GRADE

Factory-integrated Cat Grade with 3D uses a GPS signal to automatically adjust blade movements – both lift and tilt – as you follow the design. Save time, labor and materials on all phases of the job. The friendly 10-inch (254 mm) touchscreen grade display works like a smart phone, so it is easy for operators to pick up quickly. Antennas and receivers are housed in a low-profile roof-mounted spoiler.

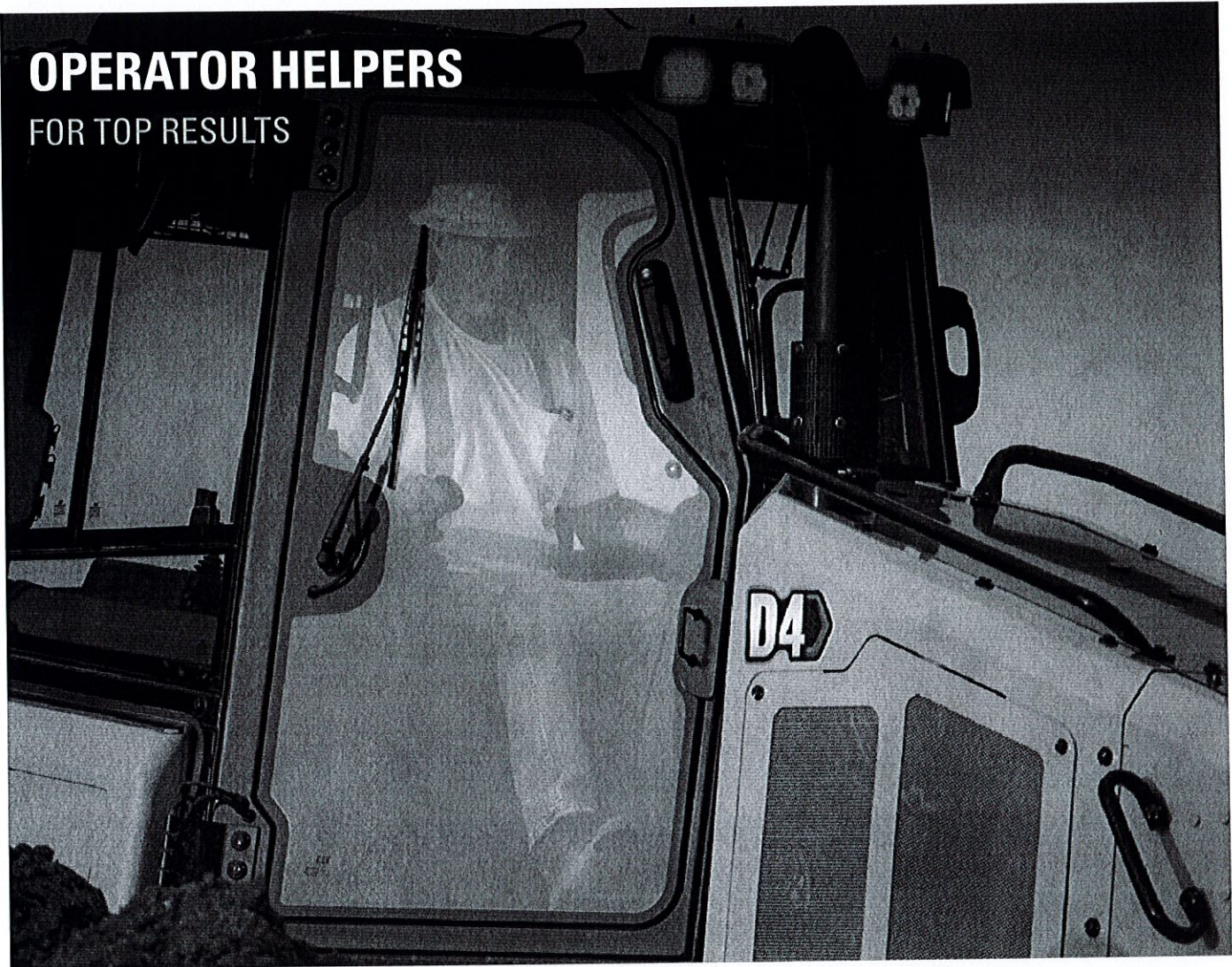
READY WHEN YOU ARE

With Attachment Ready Option (ARO), your dozer comes from the factory ready for simple installation of a grade control system. ARO is bundled with Slope Assist and the standard technology features to help operators get more done in less time. You will also find optimal mounting locations in the cab to make it easier to utilize your technology systems.

Already invested in a grade infrastructure? You can install grade systems from Trimble, Topcon and Leica onto the machine.

OPERATOR HELPERS

FOR TOP RESULTS



SMOOTH OPERATOR

Stable Blade makes it easier to get smoother surfaces faster when operating manually. Works seamlessly with operator blade inputs to help reduce imperfections and produce a smoother surface.

MAKE THE MOST OF EVERY PASS

AutoCarry automates blade lift to help you get more consistent blade loads with each pass and reduce track slip.

Note: Grade with 3D package required.

KEEP PUSHING FORWARD

Save time, effort, fuel and track wear. If high track slip is detected, Traction Control temporarily reduces track power so the operator can adjust blade load and limit the track slip.

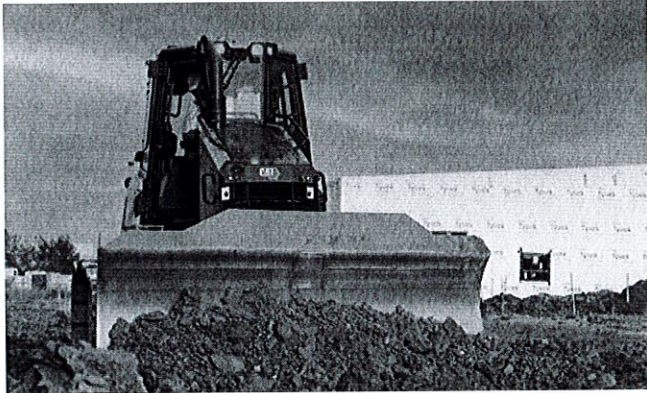
HARNESS THE POWER

Power Turn provides power to each track to allow dozer to carry heavy loads around turns.

CAT LINK TECHNOLOGY

TAKES THE GUESSWORK OUT OF MANAGING YOUR EQUIPMENT

Cat Link telematics technology helps take the complexity out of managing your jobsites – by gathering data generated by your equipment, materials and people – and serving it up to you in customizable formats.



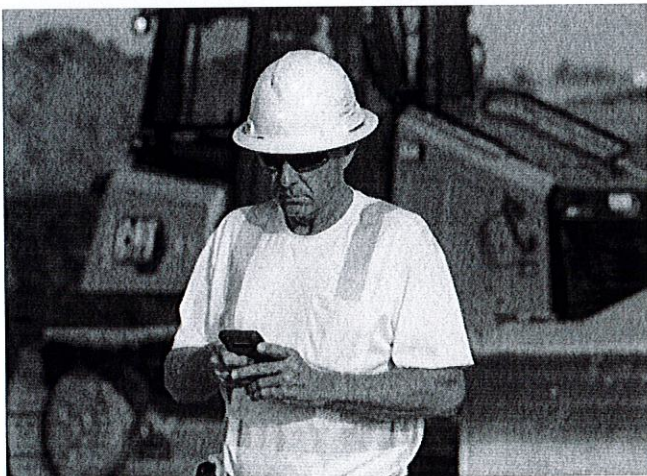
CAT PRODUCT LINK™

Product Link™ collects data automatically and accurately from your assets – any type and any brand. Information such as location, hours, fuel usage, productivity, idle time, maintenance alerts, diagnostic codes and machine health can be viewed online through web and mobile applications.



VISIONLINK®

Access information anytime, anywhere with VisionLink® – and use it to make informed decisions that boost productivity, lower costs, simplify maintenance and improve safety and security on your jobsite. With different subscription level options, your Cat dealer can help you configure exactly what you need to connect your fleet and manage your business without paying for extras you don't want. Subscriptions are available with cellular or satellite reporting or both.



REMOTE SERVICES

The Cat App helps you manage your assets – at any time – right from your smartphone. See fleet location and hours, get critical required maintenance alerts and even request service from your local Cat dealer.

- + **Remote Flash** – get software updates to one or more machines remotely.
- + **Remote Grade** lets you wirelessly manage site plans via Trimble Connect Services.
- + **Operator ID** lets you track machine operation by individual operator using the main display and Product Link.

COME ON IN AND MAKE YOURSELF COMFORTABLE

Updated cab offers more comfort and convenience for long days in the seat. Pair that with added visibility along the lower sloping hood line, and you have an operator environment that helps you get the job done.



STAY IN TOUCH

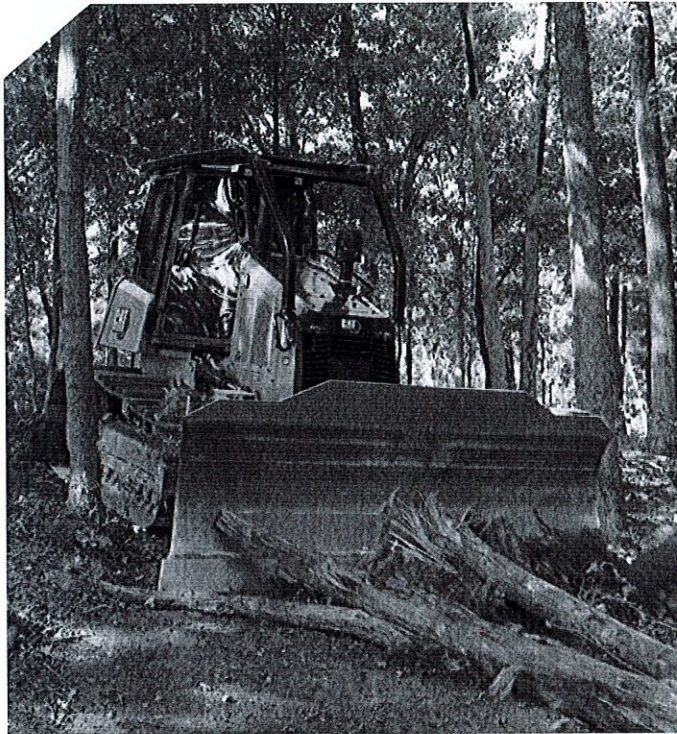
10-inch (254 mm) touchscreen main display is easy to use with a great view of machine settings and features. The standard high-definition rearview camera shows prominently in the display and includes backup lines to guide you.

WORK SPACE

New, more comfortable seat offers improved suspension and multiple adjustments for personalized comfort. Plus, enjoy additional storage spaces throughout the cab.

REDUCED EFFORT

Bi-directional control lets you preselect forward/reverse gears for reduced effort and to match your application. Save the settings as operator profile for even more convenience.



EQUIPPED FOR THE JOB

FIT THE WAY YOU WORK

Choose from undercarriage, track shoe, guarding and attachment options to ideally outfit your dozer for the type of work you do.

HEAVY DUTY/FORESTRY

You can equip your D4 with a variety of factory options to provide added protection in heavy-duty applications like forestry and land clearing. Choose individual components, sweeps/screens, protection packages and even a heavy-duty cab with polycarbonate windows.



SAVE TIME, SAVE MONEY

BECAUSE UPTIME COUNTS

EASY SERVICE ACCESS

Large engine compartment door gives you easy ground-level access to service and maintenance points. The lower panel can be removed without tools. The trunnion grease point can now be reached without bending down. Longer drawbar platform gives you more convenient fuel fill/rear camera cleaning access. Optional ground level fast fuel fill and shovel bracket add to overall convenience.

OPERATING COST SAVERS

Eco modes optimize engine speed, while maintaining ground speed and power, to save you fuel in lighter blade load applications like finish grading. Efficiency features reduce engine speed when idling, or shut the machine down after a specified time, to further save fuel and meet idling regulations. Efficient cooling package has better air flow, helping to reduce fan speed and save even more fuel in cooler conditions/lighter applications.

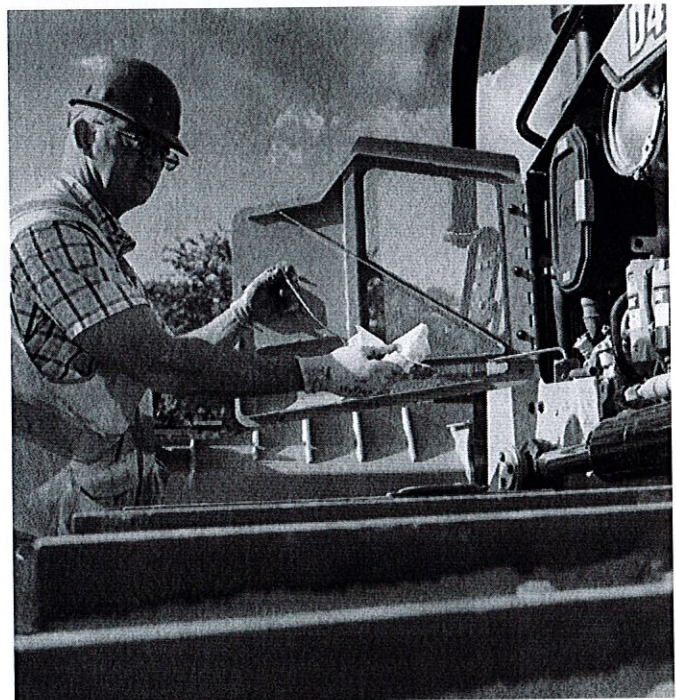
NEW UNDERCARRIAGE CHOICE

New Cat Abrasion™ undercarriage is your lowest cost-per-hour solution for high abrasion and low impact jobsites. The new design offers double the seal life and eliminates bushing turns, reducing your costs up to 50 percent per hour compared to traditional undercarriage.

SPEND LESS ON MAINTENANCE

Engine oil/engine oil filter service interval has been extended to 1,000 hours.* Longer service intervals on the air cleaner and Diesel Exhaust Fluid (DEF) pump filter help save time, too. LED lights offer up to six times the life of halogen to save on parts cost.

*First change at 500 hours. Scheduled Oil Sampling (S-O-S™) required. Please refer to Operation and Maintenance Manual (OMM) for details.





MORE THAN MACHINES

BUILT AROUND YOUR SUCCESS

When you buy Cat equipment, you get so much more than the machine. You also get the support of a best-in-class dealer network, backed by a range of flexible solutions, technology, tools and more.

CUSTOMER VALUE AGREEMENTS

A Customer Value Agreement (CVA) from your Cat dealer helps you do more and worry less. A CVA simplifies machine ownership and maintenance, adds the security of expert dealer support and gives you the peace of mind from effective equipment health management.

REPAIR OPTIONS

A broad range of repair options give you choices that work with your needs, budget and timeline. Every repair is performed by expert Cat technicians. You'll receive smart repair advice, a timely, accurate quote and service that gets your machine back into action quickly.

GENUINE CAT PARTS

Genuine Cat Parts deliver the highest level of reliability and productivity. Order direct from your Cat dealer or shop online at parts.cat.com or myparts.cat.com.

FINANCIAL SERVICES

Count on Cat Financial to provide the best finance and extended protection solutions for your business. For more than 30 years, we have helped our customers succeed through financial service excellence.

GET BACK TO WORK

Services to help you save time, save money and get back on the job.

CAT INSPECT

Access your equipment data on your mobile device. This easy-to-use app lets you capture inspection data and integrates with your other Cat data systems, so you can keep a close eye on your fleet.

HYDRAULICS AND HOSE

Whether you choose new, Reman, exchange or rebuilt hydraulic components, you'll get expert diagnostics, testing and contamination control. Cat Hose Service offers hoses and couplings for most makes and models.

CERTIFIED REBUILD

Get a full second machine life at a fraction of the cost of buying new. With upgraded features, safety enhancements and the latest technologies, your old machine will perform even better than it did when it rolled off the line.

TECHNICAL SPECIFICATIONS

See cat.com for complete specifications.

| ENGINE | | |
|--------------------------|--|-----------|
| Engine Model | Cat C4.4 | |
| Emissions | U.S. EPA Tier 4 Final/EU Stage V/ Japan 2014/Korea Tier 4 Final | |
| Build Number | 16A | |
| Transmission Type | Hydrostatic | |
| Net Power (2,100 rpm) | | |
| ISO 9249/SAE J1349 | 97 kW | 130 hp |
| ISO 9249/SAE J1349 (DIN) | 132 mhp | |
| Displacement | 4.4 L | 268.5 in³ |

- Net power available at the flywheel when the engine is equipped with fan, air cleaner, aftertreatment, and alternator with engine speed at 2,100 rpm.
- Advertised power is tested per the specified standard in effect at the time of manufacture.
- The air conditioning system on this machine contains the fluorinated greenhouse gas refrigerant R134a (Global Warming Potential = 1430). The system contains 1.6 kg of refrigerant which has a CO₂ equivalent of 2.288 metric tonnes.

| OPERATING WEIGHT | | |
|------------------|-----------|-----------|
| D4 | 13 272 kg | 29,259 lb |
| D4 LGP | 14 008 kg | 30,882 lb |

| SERVICE REFILL CAPACITIES | | |
|---------------------------|-------|--------|
| Fuel Tank | 260 L | 69 gal |
| DEF Tank | 19 L | 5 gal |

| BLADES | | | | |
|------------|---------------------|----------------------|---------|---------|
| Blade Type | VPAT/Foldable VPAT | | | |
| | Capacity | | Width | |
| VPAT | 3.26 m ³ | 4.26 yd ³ | 3196 mm | 10.5 in |
| LGP VPAT | 3.81 m ³ | 4.98 yd ³ | 3682 mm | 12.0 in |

- VPAT foldable blades have the same capacity and width as the blades.

| DIMENSIONS | | | | |
|---|----------|---------|---------|---------|
| Width of Tractor | D4 | | D4 LGP | |
| Standard Shoes without Blade | 2330 mm | 92 in | 2760 mm | 109 in |
| Standard Shoes with VPAT Blade Angled 25° | 2896 mm | 114 in | 3337 mm | 131 in |
| Standard Shoes with Foldable Blade in Transport Position | 2364 mm | 93 in | 2850 mm | 112 in |
| Machine Height from Tip of Grouser – ROPS Cab | 2965 mm | 117 in | 2965 mm | 117 in |
| Width of Standard Shoe | 560 mm | 22 in | 760 mm | 30 in |
| Length of Track on Ground | 2653 mm | 104 in | 2653 mm | 104 in |
| Length of Basic Tractor (with C-Frame and drawbar) | 4618 mm | 181 in | 4618 mm | 181 in |
| With the Following Attachments: | | | | |
| VPAT Blade, Straight | 5000 mm | 196 in | 5000 mm | 196 in |
| VPAT Blade, Angled 25° (Standard and Foldable) | 5630 mm | 221 in | 5630 mm | 221 in |
| Ground Clearance from Ground Face of Shoe (per SAE J1234) | 350 mm | 14 in | 350 mm | 14 in |
| Ground Pressure (ISO 16754) | 40.5 kPa | 5.9 psi | 31 kPa | 4.5 psi |

Note: all weights and dimensions with Cat Abrasion undercarriage.

STANDARD & OPTIONAL EQUIPMENT

Standard and optional equipment may vary. Consult your Cat dealer for details.

| POWER TRAIN | STANDARD | OPTIONAL |
|--|----------|----------|
| Cat C4.4 diesel engine | • | |
| Air cleaner with integrated precleaner, dust ejector and under hood air intake | • | |
| Auto engine speed control | • | |
| Electric fuel pump | • | |
| Hydrostatic, infinite variable speed transmission | • | |
| Precleaner with turbine | | • |
| Auto reversing fan | | • |
| OPERATOR ENVIRONMENT | STANDARD | OPTIONAL |
| Standard ROPS/FOPS cab | • | |
| Comfort cab package | | • |
| Heavy duty cab package | | • |
| Integrated air conditioning | • | |
| Air-suspension cloth seat | • | |
| Adjustable armrests | • | |
| 10-in (254 mm) touchscreen display | • | |
| Rear-vision camera | • | |
| Electronically programmable speed selector | • | |
| Electronic engine air cleaner service indicator | • | |
| Entertainment radio ready | • | |
| Radio, AM/FM/AUX/USB Bluetooth® | | • |
| CAT TECHNOLOGY | STANDARD | OPTIONAL |
| Standard | | |
| – Stable Blade | • | |
| – Traction Control | | |
| – Slope Indicate | | |
| ARO with Assist (Grade Ready + Assist Features) | | |
| – Slope Assist | | • |
| – Attachment Ready Option (ARO) | | |
| – Third Party Grade Control Ready | | |
| – Standard Features | | |
| Cat Grade with 3D | | |
| – Full-color 10-inch (254 mm) touchscreen grade display | | • |
| – Grade receivers and antennas | | |
| – AutoCarry | | |
| – Grade Software Enabled Attachment (SEA) | | |
| – ARO with Assist features | | |
| Compatibility with radios and base stations from Trimble, Topcon, and Leica | • | |
| Capability to install 3D grade systems from Trimble, Topcon, and Leica | • | |
| Product Link – cellular | • | |
| Product Link – dual cellular/satellite | | • |
| Remote Flash/Troubleshoot | • | |

| ELECTRICAL | STANDARD | OPTIONAL |
|--|----------|----------|
| 105 amp brush-type alternator (24 volt) | • | |
| Backup alarm | • | |
| Diagnostic connector | • | |
| Integrated halogen lights – 4 front, 2 rear | • | |
| 6 LED lights | | • |
| 8 LED lights – premium | | • |
| Flashing beacon | | • |
| UNDERCARRIAGE | STANDARD | OPTIONAL |
| Heavy Duty undercarriage | • | |
| Cat Abrasion undercarriage | | • |
| Lifetime lubricated track rollers (8 + 2 carrier rollers) and idlers | • | |
| Track guiding guards – full, center, front/rear | | • |
| SERVICE AND MAINTENANCE | STANDARD | OPTIONAL |
| Extended service intervals (1,000 hours* engine oil and filter, 1,000 hours power train) | • | |
| Ecology drains | • | |
| Fast fill ready | | • |
| Bio hydraulic oil | | • |
| Cold weather package (120V or 240V) | | • |
| Shovel mounting bracket | | • |
| High speed oil change | | • |
| BLADES | STANDARD | OPTIONAL |
| VPAT blade | • | |
| Folding VPAT blade | | • |
| Manual blade pitch | • | |
| Powered blade pitch | | • |
| ATTACHMENTS | STANDARD | OPTIONAL |
| Ripper Ready package | | • |
| Winch ready | | • |
| Dual Ripper/Winch Ready package | | • |
| Winch (dealer installed) | | • |
| Ripper with curved or straight shanks | | • |
| Drawbar | | • |
| Rear counterweight | | • |
| Front pull device | • | |
| Protection packages | | • |
| Rear screen | | • |

*S-O-S sampling required. Please consult Operation and Maintenance Manual (OMM) for complete service information.

Not all features are available in all regions. Please check with your local Cat dealer for specific offering availability in your area. For additional information, refer to the Technical Specifications brochures for the D4 available at www.cat.com or your Cat dealer.

For more complete information on Cat products, dealer services and industry solutions, visit us on the web at www.cat.com.

© 2021 Caterpillar. All Rights Reserved.

VisionLink is a trademark of Trimble Navigation Limited, registered in the United States and in other countries.

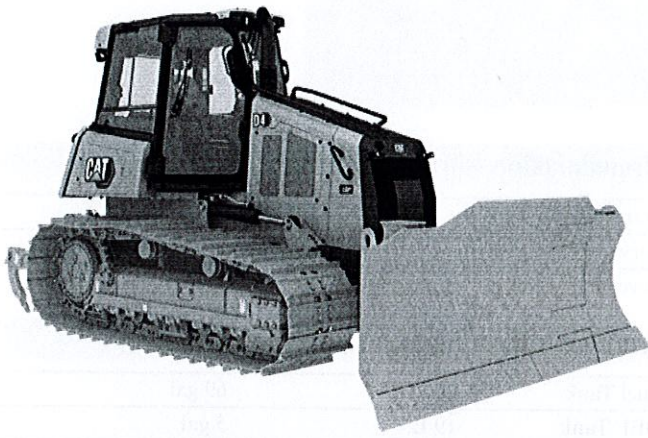
Materials and specifications are subject to change without notice. Featured machines in photos may include additional equipment. See your Cat dealer for available options.

CAT, CATERPILLAR, LET'S DO THE WORK, their respective logos, Product Link, Slope Assist, S-O-S, Abrasion, "Caterpillar Corporate Yellow", the "Power Edge" and Cat "Modern Hex" trade dress as well as corporate and product identity used herein, are trademarks of Caterpillar and may not be used without permission.

www.cat.com www.caterpillar.com

AEXQ3233-01 (06-2021)
Replaces AEXQ3233
Build Number: 16A
(Aus-NZ, Eur, N Am, Japan,
S. Korea, Turkey)





D4

Track-Type Tractor

Technical Specifications

Configurations and features may vary by region. Please consult your Cat® dealer for availability in your area.

Table of Contents

| | |
|---|----------|
| Specifications | 2 |
| Engine | 2 |
| Transmission – Travel Speed | 2 |
| Service Refill Capacities | 2 |
| Drawbar Pull | 2 |
| D4 | 3 |
| Blades | 3 |
| D4 LGP | 4 |
| Blades | 4 |
| Track Shoes | 5 |
| Heavy Duty/Forestry Dozer | 5 |
| Ripper | 6 |
| Winch | 6 |
| Standards | 7 |
| Sustainability – Sound and Vibration Levels | 7 |
| Air Conditioning System | 7 |
| Technology Features | 8 |
| Standard and Optional Equipment | 9 |

D4 Track-Type Tractor Specifications

Engine

| | | |
|------------------------------------|--|-----------|
| Engine Model | Cat® C4.4 with twin turbo | |
| Build Number | 16A | |
| Emissions | U.S. EPA Tier 4 Final/ EU Stage V/Japan 2014/ Korea Tier 4 Final | |
| Net Power (2,100 rpm) | | |
| SAE J1349 | 97 kW | 130 hp |
| ISO 9249 | 97 kW | 130 hp |
| ISO 9249 (DIN) | 132 mhp | |
| Engine Power – Maximum (2,200 rpm) | | |
| SAE J1995 | 119 kW | 160 hp |
| ISO 14396 | 117 kW | 157 hp |
| ISO 14396 (DIN) | 159 mhp | |
| Bore | 105 mm | 4.13 in |
| Stroke | 127 mm | 4.99 in |
| Displacement | 4.4 L | 268.5 in³ |

- Net power available at the flywheel when the engine is equipped with fan, air cleaner, aftertreatment, and alternator with engine speed at 2,100 rpm.
- Advertised power is tested per the specified standard in effect at the time of manufacture.
- No derating required up to 3000 m (9,840 ft) altitude, beyond 3000 m (9,840 ft) automatic derating occurs.
- All non-road Tier 4 Interim and Final, Stage IIIB, IV and V, Japan 2014 (Tier 4 Final) and Korea Tier 4 Final diesel engines are required to use only ultra-low sulfur diesel (ULSD) fuels containing 15 ppm (mg/kg) sulfur or less. Biodiesel blends up to B20 (20% blend by volume) are acceptable when blended with 15 ppm (mg/kg) sulfur or less ULSD. B20 should meet ASTM D7467 specification (biodiesel blend stock should meet Cat biodiesel spec, ASTM D6751 or EN 14214). Cat DEO-ULS™ or oils that meet the Cat ECF-3, API CJ-4, API CK-4 and/or ACEA E9 are required. Consult your OMM for further machine specific fuel recommendations.
- Diesel Exhaust Fluid (DEF) used in Cat Selective Catalytic Reduction (SCR) systems must meet the requirements outlined in the International Organization for Standardization (ISO) standard 22241.

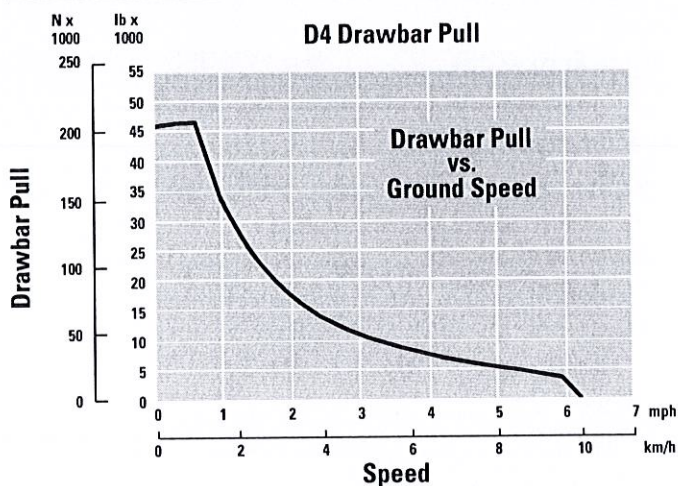
Transmission – Travel Speed

| | | |
|-------------------|-------------|-----------|
| Transmission Type | Hydrostatic | |
| Forward | 0-10 km/h | 0-6.2 mph |
| Reverse | 0-10 km/h | 0-6.2 mph |

Service Refill Capacities

| | | |
|---------------------|--------|----------|
| Fuel Tank | 260 L | 69 gal |
| DEF Tank | 19 L | 5 gal |
| Cooling System | 24 L | 6.3 gal |
| Engine Crankcase | 11 L | 2.9 gal |
| Final Drives (each) | 18.5 L | 4.9 gal |
| Hydraulic Tank | 64 L | 16.9 gal |

Drawbar Pull



D4 Track-Type Tractor Specifications

D4

| | | |
|---|---------------------------------|-----------------------|
| Operating Weight* | 13 272 kg | 29,259 lb |
| Shipping Weight** | 13 006 kg | 28,673 lb |
| Ground Pressure (ISO 16754) | 40.5 kPa | 5.9 psi |
| Undercarriage (Standard) | 40 Section/ 8 Bottom Rollers | |
| 1 Track Gauge | 1770 mm | 70 in |
| 2 Width of Track Shoe (Standard) | 560 mm | 22 in |
| 3 Width of Tractor | 2330 mm | 92 in |
| 4 Length of Track on Ground | 2653 mm | 1,104 in |
| Ground Contact Area (ISO 16754) | 3.27 m ² | 5,070 in ² |
| Grouser Height (Moderate/Extreme Service) | 48/57 mm | 1.9/2.2 in |
| Ground Clearance | 350 mm | 14.0 in |
| 5 Machine Height*** | 2965 mm | 117 in |
| 6 Length of Basic Tractor**** | 4731 mm | 181 in |

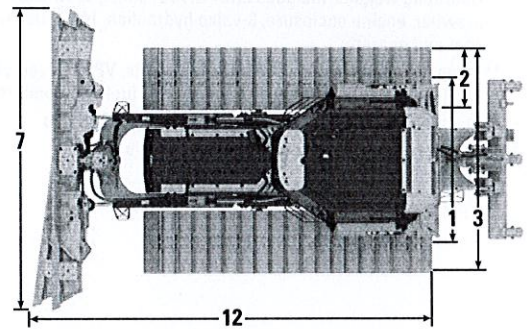
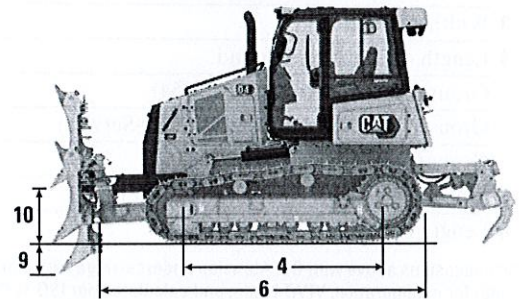
All dimensions above with Cat Abrasion™ undercarriage with Extreme Service shoes of maximum width for configuration, VPAT blade, and calculated per ISO 16754 unless otherwise specified.

*Operating weights: includes EROPS, A/C, lights, VPAT Dozer, VPAT blade, transmission, drawbar, engine enclosure, 3-valve hydraulics, 100% fuel, Cat Comfort Series air suspension seat and operator.

**Shipping weight includes EROPS, A/C, lights, VPAT Dozer, VPAT blade, transmission, drawbar, engine enclosure, 3-valve hydraulics, 10% fuel, Cat Comfort Series air suspension seat.

***Machine height from tip of grouser to top of ROPS cab.

****Length of Basic Tractor from blade to drawbar.



LGP Model with Foldable VPAT Blade Shown

Blades

| Configuration | VPAT | | Foldable VPAT | |
|---|---|----------|---------------|------------|
| Capacity (ISO 9246) | 3.26 m³ | 4.26 yd³ | 3.26 m³ | 4.26 yd³ |
| 7 Width across End Bits | 3196 mm | 10.5 ft | 3196 mm | 10.5 ft |
| Width without End Bits | 3097 mm | 10.2 ft | 3097 mm | 10.2 ft |
| Width across End Bits (Blade Angled 24°) | 2920 mm | 115 in | 2920 mm | 115 in |
| Width without End Bits (Blade Angled 24°) | 2829 mm | 111.4 in | 2829 mm | 111.4 in |
| Width of the Machine (Foldable Blade Angled 24° for transportation purpose only) | — | | 2371 mm | 93.3 in |
| Maximum Blade Angle | 24° | | 24° | |
| 8 Height | 1291 mm | 50.8 in | 1291 mm | 50.8 in |
| 9 Dig Depth | 470 mm | 18.5 in | 470 mm | 18.5 in |
| 10 Lift Height | 953 mm | 37.5 in | 953 mm | 37.5 in |
| 11 Maximum Tilt at Blade Corner | 226 mm | 8.9 in | 226 mm | 8.9 in |
| Maximum Tilt Angle | 8° | | 8° | |
| Pitch Adjustment | 60° (cutting edge/ground, nominal); -2°/+4° | | | |
| 12 Length of Machine (Blade Straight) | 5142 mm | 202.4 in | 5142 mm | 202.4 in |
| Length of Machine (Blade Angled 24°) | 5738 mm | 226.3 in | 5738 mm | 226.3 in |
| Blade Weight | 1005 kg | 2,215 lb | 1195 kg | 2,634.5 lb |

D4 Track-Type Tractor Specifications

D4 LGP

| | | |
|---|---------------------------------|-----------------------|
| Operating Weight* | 14 008 kg | 30,882 lb |
| Shipping Weight** | 13 742 kg | 30,296 lb |
| Ground Pressure (ISO 16754) | 31 kPa | 4.5 psi |
| Undercarriage (Standard) | 40 Section/ 8 Bottom Rollers | |
| 1 Track Gauge | 2000 mm | 79 in |
| 2 Width of Track Shoe (Standard) | 760 mm | 30 in |
| 3 Width of Tractor | 2760 mm | 109 in |
| 4 Length of Track on Ground | 2653 mm | 104 in |
| Ground Contact Area (ISO 16754) | 4.46 m ² | 6,912 in ² |
| Grouser Height (Moderate/Extreme Service) | 48/57 mm | 1.9/2.2 in |
| Ground Clearance | 350 mm | 14.0 in |
| 5 Machine Height*** | 2965 mm | 117 in |
| 6 Length of Basic Tractor**** | 4731 mm | 181 in |

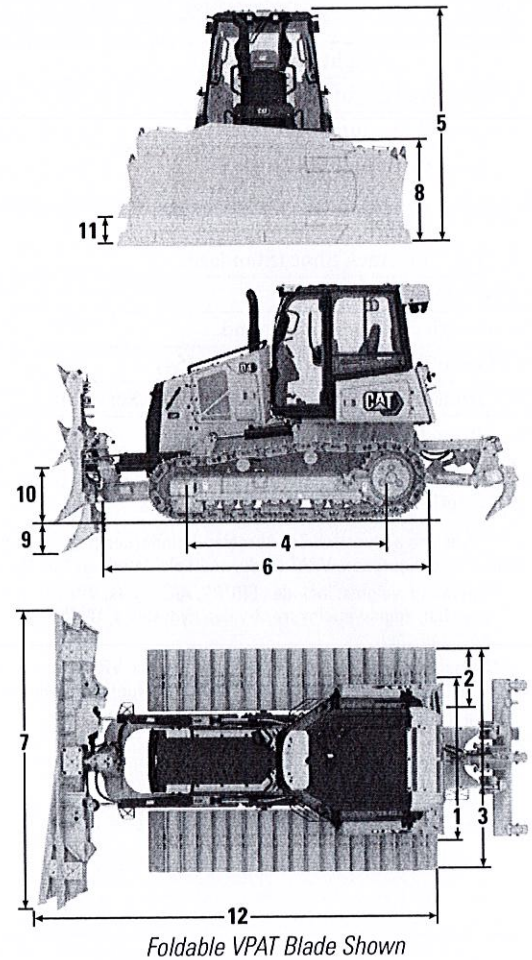
All dimensions above with Cat Abrasion undercarriage with Extreme Service shoes of maximum width for configuration, VPAT blade, and calculated per ISO 16754 unless otherwise specified.

*Operating weights: includes EROPS, A/C, lights, VPAT Dozer, VPAT blade, transmission, drawbar, engine enclosure, 3-valve hydraulics, 100% fuel, Cat Comfort Series air suspension seat and operator.

**Shipping weight includes EROPS, A/C, lights, VPAT Dozer, VPAT blade, transmission, drawbar, engine enclosure, 3-valve hydraulics, 10% fuel, Cat Comfort Series air suspension seat.

***Machine height from tip of grouser to top of ROPS cab.

****Length of Basic Tractor from blade to drawbar.



Blades

| Configuration | LGP VPAT | | Foldable LGP VPAT | |
|---|---|----------|-------------------|----------|
| Capacity (ISO 9246) | 3.81 m³ | 4.98 yd³ | 3.81 m³ | 4.98 yd³ |
| 7 Width across End Bits | 3684 mm | 12.0 ft | 3684 mm | 12.0 ft |
| Width without End Bits | 3573 mm | 11.7 ft | 3573 mm | 11.7 ft |
| Width across End Bits (Blade Angled 24°) | 3366 mm | 132.5 in | 3366 mm | 132.5 in |
| Width without End Bits (Blade Angled 24°) | 3264 mm | 128.5 in | 3264 mm | 128.5 in |
| Width of the Machine (Foldable Blade Angled 24° for transportation purpose only) | — | | 2815 mm | 110.8 in |
| Maximum Blade Angle | 24° | | 24° | |
| 8 Height | 1323 mm | 52.1 in | 1323 mm | 52.1 in |
| 9 Dig Depth | 470 mm | 18.5 in | 470 mm | 18.5 in |
| 10 Lift Height | 953 mm | 37.5 in | 953 mm | 37.5 in |
| 11 Maximum Tilt at Blade Corner | 260 mm | 10.2 in | 260 mm | 10.2 in |
| Maximum Tilt Angle | 8° | | 8° | |
| Pitch Adjustment | 60° (cutting edge/ground, nominal); -2°/+4° | | | |
| 12 Length of Machine (Blade Straight) | 5142 mm | 202.5 in | 5142 mm | 202.5 in |
| Length of Machine (Blade Angled 24°) | 5837 mm | 229.8 in | 5837 mm | 229.8 in |
| Blade Weight | 1105 kg | 2,436 lb | 1306 kg | 2,879 in |

D4 Track-Type Tractor Specifications

Track Shoes

Some track shoes not available in all regions. Please consult your Cat dealer for details.

| Standard | | |
|----------------|-----------------|--------------------------------|
| 510 mm (20 in) | Cat Abrasion™ | Moderate Service |
| 510 mm (20 in) | Cat Abrasion | Extreme Service |
| 560 mm (22 in) | Cat Abrasion | Moderate Service |
| 560 mm (22 in) | Cat Abrasion | Extreme Service |
| 510 mm (20 in) | Heavy Duty | Extreme Service |
| 560 mm (22 in) | Heavy Duty | Extreme Service |
| LGP | | |
| 760 mm (30 in) | Cat Abrasion | Moderate Service |
| 760 mm (30 in) | Cat Abrasion | Extreme Service |
| 760 mm (30 in) | Cat Abrasion XL | Extended Life/Extreme Abrasion |
| 760 mm (30 in) | Heavy Duty | Extreme Service |
| 760 mm (30 in) | Heavy Duty | Self-Cleaning |

Heavy Duty/Forestry Dozer

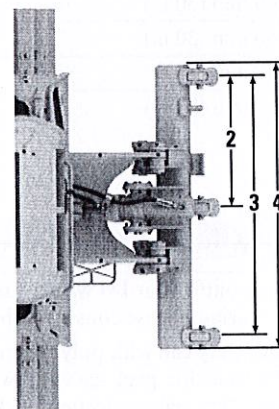
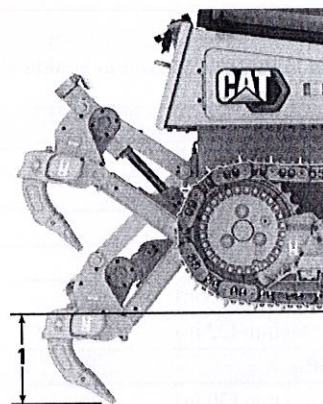
You can outfit your D4 with a variety of factory options designed to provide added protection in heavy-duty applications like forestry and land clearing. Please consult with your Cat dealer about the variety of options available to best equip your dozer for the work that you do:

- Heavy duty cab with polycarbonate windows
- Cab protection package with sweeps and rear screen
- Heavy Duty cab protection package with sweeps, rear screen, side screen, rear light guards
- Rear screen
- Heavy duty front protection package with heavy duty radiator grill and standard crankcase guard
- Heavy duty protection package with heavy duty radiator grill, heavy duty fuel tank guard, heavy duty crankcase guard (also available for fast fill/fast fill ready models)
- Heavy duty undercarriage
- Extreme service track shoes with Heavy duty undercarriage
- Track guiding guards
- Six or eight LED lights
- Flashing beacon

D4 Track-Type Tractor Specifications

Ripper

| Type Fixed | Parallelogram | |
|-----------------------------|------------------|-----------------|
| 1 Maximum Penetration Force | | |
| D4 | 42.2 kN | 9,480 lb |
| D4 LGP | 45.1 kN | 10,138 lb |
| Maximum Pry-out Force | | |
| D4 | 166.7 kN | 37,480 lb |
| D4 LGP | 166.7 kN | 37,480 lb |
| 2 Pocket Spacing | 896 mm | 35.3 in |
| 3 Shank Gauge | 1792 mm | 70.6 in |
| Shank Section | 58.5 mm × 138 mm | 2.3 in × 5.4 in |
| Number of Pockets | 3 | |
| 4 Overall Beam Width | 1951 mm | 76.8 in |
| Beam Cross Section | 165 mm × 211 mm | 6.5 in × 8.3 in |
| Maximum Penetration | 360 mm | 14.2 in |
| Weight with One Shank | 845 kg | 1,863 lb |
| Each Additional Shank | 34 kg | 75 lb |



Winch

| Winch Model | PA50 | |
|----------------------------------|-------------|------------|
| Winch Drive | Hydrostatic | |
| Weight* | 907 kg | 2,000 lb |
| Winch and Bracket Length | 845 mm | 33.2 in |
| Winch Case Width | 740 mm | 29.1 in |
| Drum Diameter | 205 mm | 8 in |
| Drum Width | 274 mm | 11 in |
| Flange Diameter | 457 mm | 18 in |
| Drum Capacity (recommended rope) | 93 m | 306 ft |
| Drum Capacity (optional rope) | 67 m | 220 ft |
| Rope Recommended Diameter | 19 mm | 0.75 in |
| Optional Cable Size | 22 mm | 0.87 in |
| Cable Ferrule Size (O.D.) | 54 mm | 2.13 in |
| Cable Ferrule Size (length) | 67 mm | 2.63 in |
| Maximum Bare Drum | | |
| Line Pull | 222.4 kN | 50,000 lbf |
| Line Speed | 38 m/min | 124 ft/min |
| Maximum Full Drum | | |
| Line Pull | 115.7 kN | 26,000 lbf |
| Line Speed | 70 m/min | 230 ft/min |

*Weight includes pump, operator controls, oil, mounting brackets and spacers.

D4 Track-Type Tractor Specifications

Standards

ROPS/FOPS/OPS

- ROPS (Rollover Protective Structure) offered by Caterpillar for the machine meets ROPS criteria ISO 3471:2008.
- FOPS (Falling Object Protective Structure) meets ISO 3449:2005 Level II.
- OPS (Operator Protective Structure) screens meet OPS criteria per ISO 8084:2003 and WCB G604:2011.

Brakes

- Brakes meet the standard ISO 10265:2008.

Sound and Vibration – Cab

Sound Level Information

- The declared dynamic operator sound pressure level is 76 dB(A) when “ISO 6396:2008” is used to measure the value for an enclosed cab. The measurements were conducted at 70% of the maximum engine cooling fan speed. The sound level may vary at different engine cooling fan speeds. The cab was properly installed and maintained. The measurements were conducted with the cab doors and the cab windows closed.

NOTE: The dynamic operator sound pressure level uncertainty is ± 2 dB(A).

- Hearing protection may be needed when the machine is operated with an open operator station, in a noisy environment, or with a cab that is not properly maintained.
- The guaranteed exterior sound power level is 109 dB(A) when the value is measured according to the dynamic test procedures and the conditions that are specified in “ISO 6395:2008.” The measurements were conducted at 70% of the maximum engine cooling fan speed. The sound level may vary at different engine cooling fan speeds.
- Sound Level Information for Machines in European Union Countries and in Countries that Adopt the “EU Directives.” The information below applies to only the machine configurations that have the “CE” mark on the Product Identification Plate. If equipped, the certification label – 109 dB(A) – is used to verify the environmental sound certification of the machine to the requirements of the European Union. The value that is listed on the label indicates the guaranteed exterior sound power level (L_{WA}) at the time of manufacture for the conditions that are specified in “2000/14/EC.”

Sustainability – Sound and Vibration Levels

Sound Levels

Guaranteed Exterior Sound Power

| | |
|--------------------------|-----------|
| 2000/14/EC ISO 6395:2008 | 109 dB(A) |
|--------------------------|-----------|

Dynamic Operator Sound Pressure Level (L_{WA})

| | |
|---------------|----------|
| ISO 6396:2008 | 76 dB(A) |
|---------------|----------|

Vibration Levels

- The hand/arm vibration per ISO 5349:2001 of this machine is below 2.5 m/s^2 , for an experienced operator in a dozing application.
- The whole body vibration per ISO/TR25398:2006 of this machine is below 0.5 m/s^2 for an experienced operator in a dozing application.
- Operator's seat meets the input “spectral class EM6” according to ISO 7096:2000. Seat has a transmissibility factor of “SEAT<0.7.”

Air Conditioning System

The air conditioning system on this machine contains the fluorinated greenhouse gas refrigerant R134a (Global Warming Potential = 1430). The system contains 1.6 kg of refrigerant which has a CO₂ equivalent of 2.288 metric tons.

D4 Track-Type Tractor Specifications

Technology Features

The broadest choice of technology features helps you get the most from your dozer.

| GRADE | Premium Display | Grade with Slope Assist | Grade with 3D |
|--|-----------------|-------------------------|---------------|
| Grade with 3D | — | + ¹ | ✓ |
| Third Party Grade Control Ready | ✓ | ✓ | ✓ |
| ASSIST | | | |
| Slope Indicate | | | |
| Stable Blade | ✓ | ✓ | ✓ |
| Traction Control | | | |
| Slope Assist | — | ✓ | ✓ |
| VISION/DETECT | | | |
| High Definition (HD) Rear Camera with Backup Lines | ✓ | ✓ | ✓ |
| LINK | | | |
| Product Link™ Cellular | ✓ | ✓ | ✓ |
| Product Link Dual Mode | ⊕ | ⊕ | ⊕ |
| Remote Flash/Troubleshoot | ✓ | ✓ | ✓ |
| Grade Connectivity | — | ✓ | ✓ |
| OPERATOR FEATURES | | | |
| Operator ID ² | ✓ | ✓ | ✓ |
| Machine Security – Passcode ² | ✓ | ✓ | ✓ |
| Machine Security – Bluetooth ^{®2} | ⊕ | ⊕ | ⊕ |

¹Requires Software Enabled Attachment (SEA)

²Contact Dealer to Enable

✓ Standard

+ Dealer Install Option

⊕ Factory Option

D4 Standard and Optional Equipment

Standard and Optional Equipment

Standard and optional equipment may vary. Consult your Cat dealer for details.

| | Standard | Optional | | Standard | Optional |
|--|----------|----------|---|----------|----------|
| POWER TRAIN | | | OPERATOR ENVIRONMENT | | |
| Cat C4.4 diesel engine | ✓ | | Cab – Standard ROPS/FOPS (air suspended seat, joystick controls) | ✓ | |
| U.S. EPA Tier 4 Final/EU Stage V/ Japan 2014/Korea Tier 4 Final Certified Engine with Aftertreatment | ✓ | | Cab – Comfort Package (heated joystick controls, heated and ventilated seat) | | ✓ |
| ADEM A6 Electronic Control Module | ✓ | | Cab – Heavy Duty Package (polycarbonate windows, air suspended seat, joystick controls) | | ✓ |
| Air-to-air aftercooling | ✓ | | Cloth air suspension seat | ✓ | |
| Glow plug starting aid | ✓ | | Heated/ventilated seat | | ✓ |
| 3000 m (9,840 ft) altitude operation capability without derating | ✓ | | 10-inch (254 mm) touchscreen display | ✓ | |
| Hydraulically driven, variable speed fan | ✓ | | Rear view camera | ✓ | |
| Auto-reversing fan | | ✓ | Electro-hydraulic implement and steering controls | ✓ | |
| Aluminum bar plate cooling system (radiator, power train, aftercooler) | ✓ | | Electronically programmable speed selector | ✓ | |
| Air cleaner with integrated precleaner, dust ejector and under hood air intake | ✓ | | Adjustable armrests | ✓ | |
| Air cleaner with turbine precleaner | | ✓ | Heated joystick controls | | ✓ |
| Electrical lift/priming pump | ✓ | | Retractable seat belt, 76 mm (3 in) | ✓ | |
| Engine decelerating function (rotary switch and pedal engine speed control) | ✓ | | 12V radio ready (plug and play) | ✓ | |
| Hydrostatic, infinite variable speed transmission | ✓ | | Radio – AM/FM/AUX/USB/Bluetooth | | ✓ |
| Selections and electronic control enhancements for the transmission/ engine system | ✓ | | Footrests for slope work | ✓ | |
| Programmable/selectable bi-directional shifting | ✓ | | Integrated air conditioning with automatic temperature control | ✓ | |
| Engine Idle Shutdown | ✓ | | Electronic engine air cleaner service indicator | ✓ | |
| Auto Engine Speed Control | ✓ | | Electronic water-in-fuel switch | ✓ | |
| | | | Product Link ready GSM or Satellite | ✓ | |
| | | | Intermittent wiper | ✓ | |
| | | | Storage compartments | ✓ | |
| | | | Cup holder | ✓ | |
| | | | Coat hook | ✓ | |
| | | | Rear view mirror | ✓ | |

(continued on next page)

D4 Standard and Optional Equipment

Standard and Optional Equipment (continued)

Standard and optional equipment may vary. Consult your Cat dealer for details.

| | Standard | Optional | | Standard | Optional |
|---|----------|----------|--|----------|----------|
| CAT TECHNOLOGY | | | UNDERCARRIAGE | | |
| Standard technology features: | ✓ | | Heavy Duty Undercarriage | ✓ | |
| – Slope Indicate | | | Cat Abrasion Undercarriage | | ✓ |
| – Stable Blade | | | Cat Abrasion Extended Life Undercarriage | | ✓ |
| – Traction Control | | | Center-tread, sprocketed idler with Cat Abrasion or standard idler with Heavy Duty | ✓ | |
| – Third Party Grade Control Ready | | | Lifetime lubricated track rollers (8 + 2 carrier rollers) and idlers | ✓ | |
| Grade with Slope Assist (Grade Ready + Assist Features): | | ✓ | Tracks: 40 sections – 560 mm (22 in) Heavy Duty Extreme Service (ES) for D4 | ✓ | |
| – Slope Assist | | | Tracks: 40 sections – 760 mm (30 in) Heavy Duty Extreme Service (ES) for D4 LGP | ✓ | |
| – Attachment Ready Option (ARO) | | | Hydraulic track adjusters | ✓ | |
| – Standard technology features | | | Center track guiding guard (LGP only) | ✓ | |
| Cat Grade with 3D: | | ✓ | Replaceable sprocket rim segments | ✓ | |
| – Full-color 10-inch (254 mm) touchscreen grade display | | | Full track guiding guard | | ✓ |
| – Grade receivers and antennas | | | Front and rear track guiding guard | | ✓ |
| – AutoCarry™ | | | Center track guiding guard – Cat Abrasion Extended Life | | ✓ |
| – Grade Software Enabled Attachment (SEA) | | | BLADES | | |
| – Grade with Slope Assist features | | | VPAT blade | ✓ | |
| Compatibility with radios and base stations from Trimble, Topcon, and Leica | ✓ | | Foldable VPAT blade | | ✓ |
| Capability to install 3D grade systems from Trimble, Topcon, and Leica | ✓ | | Manual blade pitch | ✓ | |
| Product Link, Cellular | ✓ | | Powered blade pitch | | ✓ |
| Product Link – Dual Cellular/Satellite | | ✓ | Blade Shake | ✓ | |
| Remote Flash/Troubleshoot | ✓ | | HYDRAULICS | | |
| Operator ID | ✓ | | Three valve-hydraulics | ✓ | |
| Machine Security – Passcode | ✓ | | Load sensing hydraulics | ✓ | |
| Machine Security – Bluetooth | | ✓ | | | |

(continued on next page)

D4 Standard and Optional Equipment

Standard and Optional Equipment (continued)

Standard and optional equipment may vary. Consult your Cat dealer for details.

| | Standard | Optional |
|--|----------|----------|
| ELECTRICAL | | |
| Horn | ✓ | |
| Back-up alarm | ✓ | |
| 12V converter, 10A diagnostic connector | ✓ | |
| 950 CCA class 31 batteries | ✓ | |
| Six halogen lights | ✓ | |
| Six LED lights | | ✓ |
| Eight LED lights, Premium | | ✓ |
| Flashing beacon | | ✓ |
| 105 Amp brush-type alternator (24 volt) | ✓ | |
| 24V electric starter | ✓ | |
| Cold weather starter | | ✓ |
| Cold weather package (120V) | | ✓ |
| Cold weather package (240V) | | ✓ |
| Heated, insulated breather | | ✓ |
| SERVICE AND MAINTENANCE | | |
| Fast fuel fill | | ✓ |
| Shovel mounting bracket | | ✓ |
| Fuel refilling pump | | ✓ |
| High speed oil change | | ✓ |
| Antifreeze coolant (−37° C/−34.6° F) | ✓ | |
| Extended life coolant | ✓ | |
| Cat HYDO™ Advanced 10 hydraulic fluid | ✓ | |
| Bio hydraulic oil | | ✓ |
| Extended service intervals (1,000 hours* engine oil and filter, 1,000 hours power train) | ✓ | |
| Ecology drains (engine oil, engine coolant, hydraulic) | ✓ | |
| Scheduled Oil Sampling (S-O-S SM) ports (engine, hydrostatic, hydraulics and engine coolant) | ✓ | |
| Hinged radiator louvered grill | ✓ | |

| | Standard | Optional |
|--|----------|----------|
| ATTACHMENTS | | |
| Front pull device | ✓ | |
| Rigid drawbar | ✓ | |
| Ripper ready package | | ✓ |
| Ripper ready package, powerpitch | | ✓ |
| Winch ready package | | ✓ |
| Dual (ripper and winch) ready package | | ✓ |
| Dual (ripper and winch) ready package, powerpitch | | ✓ |
| Ripper package, curved | | ✓ |
| Ripper package, straight | | ✓ |
| Winch preparation | | ✓ |
| Drawbar | ✓ | |
| Counterweight, rear | | ✓ |
| Counterweight, rear slab | | ✓ |
| Rear attachment, none | | ✓ |
| DEALER INSTALLED ATTACHMENTS | | |
| Hydraulic winch arrangement | | ✓ |
| Fairlead, three rollers | | ✓ |
| Fourth roller conversion kit | | ✓ |
| Winch step | | ✓ |
| GUARDING | | |
| Standard protection package (bottom guard, fan guard) | ✓ | |
| Front protection package | | ✓ |
| Heavy duty protection package | | ✓ |
| CAB PROTECTION | | |
| Cab standard protection package (sweeps, rear screen) | | ✓ |
| Cab heavy duty protection package (sweeps, rear screen, side screens, rear light guards) | | ✓ |
| Cab rear screen | | ✓ |
| OTHER STANDARD EQUIPMENT | | |
| C-Frame, cylinders and lines | ✓ | |
| Crankcase guard | ✓ | |
| Perforated engine enclosures | ✓ | |
| Lockable engine enclosures | ✓ | |

*S-O-S sampling required. Please consult Operation and Maintenance Manual (OMM) for complete service information.

For more complete information on Cat products, dealer services, and industry solutions, visit us on the web at www.cat.com

© 2021 Caterpillar
All rights reserved

Materials and specifications are subject to change without notice. Featured machines in photos may include additional equipment. See your Cat dealer for available options.

CAT, CATERPILLAR, LET'S DO THE WORK, their respective logos, "Caterpillar Corporate Yellow," the "Power Edge" and Cat "Modern Hex" trade dress as well as corporate and product identity used herein, are trademarks of Caterpillar and may not be used without permission.

AEXQ3213-01 (06-2021)
Replaces AEXQ3213
Build Number: 16A
(Aus-NZ, Eur, Jpn,
N Am, S Korea, Turkey)



Effective with sales to the first user on or after June 1, 2015

CATERPILLAR LIMITED WARRANTY

For Selected Machine Models Designated by Caterpillar with 12 Month/Unlimited Hour Warranty

Worldwide

Caterpillar Inc. or any of its subsidiaries ("Caterpillar") warrants the following products sold by it to be free from defects in material and workmanship:

- New earthmoving, construction, material handling, forestry product, paving product, compact wheel loader, mini hydraulic excavator, skid steer loader, multi terrain loader, and compact track loader machines designated by Caterpillar as having 12-months/unlimited hour warranty. See your Cat® dealer for a complete listing of covered models.

- Attachments/work tools installed on such machines prior to delivery (unless covered by the Cat Work Tool warranty statement or another manufacturer's warranty). Hammer tool points and compacting plates used on hydraulic hammers are not warranted.

An additional warranty against breakage is applicable to certain Cat ground engaging tools. An additional warranty against wear is applicable to all landfill compactor tips when used in residential waste landfills. Refer to the applicable warranty statements for coverage detail.

This warranty does not apply to:

- Cat Batteries
- Mobil-trac belts, rubber tracks used on multi terrain loaders, compact track loaders, and mini hydraulic excavators
- Cat Work Tools
- Select models designated by Caterpillar that are sold in India and China

These products are covered by other Caterpillar warranties. This warranty is subject to the following:

Warranty Period

For new machines and work tools/attachments the warranty period is 12-months/unlimited hours, starting from date of delivery to the first user.

Note:

- For hydraulic line's quick connect/disconnect components sold on compact wheel loaders, mini hydraulic excavators, skid steer loaders, multi terrain loaders, and compact track loader machines, the warranty period is 50 hours starting from the date of delivery to the first user.
- For Draglines, Electric Rope Shovels, Hard Rock Movers, Hard Rock Feeders; the warranty period is not to exceed 24 months from shipment of the last major component from the Caterpillar place of manufacture.

Caterpillar Responsibilities

If a defect in material or workmanship is found during the warranty period, Caterpillar will, during normal working hours and at a place of business of a Cat dealer or other source approved by Caterpillar:

- Provide (at Caterpillar's choice) new, remanufactured, or Caterpillar approved repaired parts or assembled components needed to correct the defect.

Note: New, remanufactured, or Caterpillar approved replacement parts provided under the terms of this warranty are warranted for the remainder of the warranty period applicable to the product in which installed as if such parts were original components of that product. Items replaced under this warranty become the property of Caterpillar.

- Replace lubricating oil, filters, antifreeze, and other service items made unusable by the defect.
- Provide reasonable and customary labor needed to correct the defect.

User Responsibilities

The user is responsible for:

- Providing proof of delivery date to the first user.

- Labor costs, except as stated under "Caterpillar Responsibilities."
- Transportation costs, except as stated under "Caterpillar Responsibilities."
- Premium or overtime labor costs.
- Parts shipping charges in excess of those that are considered usual and customary.
- Local taxes, if applicable.
- Costs to investigate complaints, unless the problem is caused by a defect in Caterpillar material or workmanship.
- Giving timely notice of a warrantable failure and promptly making the product available for repair.
- Performance of the required maintenance (including use of proper fuel, oil, lubricants, and coolant) and items replaced due to normal wear and tear.
- Allowing Caterpillar access to all electronically stored data.

Limitations

Caterpillar is not responsible for:

- Failures resulting from any use or installation that Caterpillar judges improper.
- Failures resulting from attachments, accessory items, and parts not sold or approved by Caterpillar.
- Failures resulting from abuse, neglect, and/or improper storage or repair.
- Failures resulting from user's delay in making the product available after being notified of a potential product problem.
- Failures resulting from unauthorized repair or adjustments, and unauthorized fuel setting changes.

(Continued on the reverse side....)

This warranty covers every major component of the products. Claims under this warranty should be submitted to a place of business of a Cat dealer or other source approved by Caterpillar. For further information concerning either the location to submit claims or Caterpillar as the issuer of this warranty, write Caterpillar Inc., 100 N. E. Adams St., Peoria, IL USA 61629.

Caterpillar's obligations under this Limited Warranty are subject to, and shall not apply in contravention of, the laws, rules, regulations, directives, ordinances, orders, or statutes of the United States, or of any other applicable jurisdiction, without recourse or liability with respect to Caterpillar.

A) For products operating outside of Australia, Fiji, Nauru, New Caledonia, New Zealand, Papua New Guinea, the Solomon Islands, and Tahiti, the following is applicable:

NEITHER THE FOREGOING EXPRESS WARRANTY NOR ANY OTHER WARRANTY BY CATERPILLAR, EXPRESS OR IMPLIED, IS APPLICABLE TO ANY ITEM CATERPILLAR SELLS THAT IS WARRANTED DIRECTLY TO THE USER BY ITS MANUFACTURER.

THIS WARRANTY IS EXPRESSLY IN LIEU OF ANY OTHER WARRANTIES, EXPRESS OR IMPLIED, INCLUDING ANY WARRANTY OF MERCHANTABILITY OR FITNESS FOR A PARTICULAR PURPOSE, EXCEPT CATERPILLAR EMISSION-RELATED COMPONENTS WARRANTY FOR NEW ENGINES, WHERE APPLICABLE. REMEDIES UNDER THIS WARRANTY ARE LIMITED TO THE PROVISION OF MATERIAL AND SERVICES, AS SPECIFIED HEREIN.

CATERPILLAR IS NOT RESPONSIBLE FOR INCIDENTAL OR CONSEQUENTIAL DAMAGES.

CATERPILLAR EXCLUDES ALL LIABILITY FOR OR ARISING FROM ANY NEGLIGENCE ON ITS PART OR ON THE PART OF ANY OF ITS EMPLOYEES, AGENTS, OR REPRESENTATIVES IN RESPECT OF THE MANUFACTURE OR SUPPLY OF GOODS OR THE PROVISION OF SERVICES RELATING TO THE GOODS.

IF OTHERWISE APPLICABLE, THE VIENNA CONVENTION ON CONTRACTS FOR THE INTERNATIONAL SALE OF GOODS IS EXCLUDED IN ITS ENTIRETY.

B) For products operating in Australia, Fiji, Nauru, New Caledonia, New Zealand, Papua New Guinea, the Solomon Islands, and Tahiti, the following is applicable:

THIS WARRANTY IS IN ADDITION TO WARRANTIES AND CONDITIONS IMPLIED BY STATUTE AND OTHER STATUTORY RIGHTS AND OBLIGATIONS THAT BY ANY APPLICABLE LAW CANNOT BE EXCLUDED, RESTRICTED OR MODIFIED ("MANDATORY RIGHTS"). ALL OTHER WARRANTIES OR CONDITIONS, EXPRESS OR IMPLIED (BY STATUTE OR OTHERWISE), ARE EXCLUDED, WITHOUT LIMITING THE FOREGOING PROVISIONS OF THIS PARAGRAPH, WHERE A PRODUCT IS SUPPLIED FOR BUSINESS PURPOSES, THE CONSUMER GUARANTEES UNDER THE CONSUMER GUARANTEES ACT 1993 (NZ) WILL NOT APPLY.

NEITHER THIS WARRANTY NOR ANY OTHER CONDITION OR WARRANTY BY CATERPILLAR, EXPRESS OR IMPLIED (SUBJECT ONLY TO THE MANDATORY RIGHTS), IS APPLICABLE TO ANY ITEM CATERPILLAR SELLS THAT IS WARRANTED DIRECTLY TO THE USER BY ITS MANUFACTURER.

IF THE MANDATORY RIGHTS MAKE CATERPILLAR LIABLE IN CONNECTION WITH SERVICES OR GOODS, THEN TO THE EXTENT PERMITTED UNDER THE MANDATORY RIGHTS, THAT LIABILITY SHALL BE LIMITED AT CATERPILLAR'S OPTION TO (a) IN THE CASE OF SERVICES, THE SUPPLY OF THE SERVICES AGAIN OR THE PAYMENT OF THE COST OF HAVING THE SERVICES SUPPLIED AGAIN AND (b) IN THE CASE OF GOODS, THE REPAIR OR REPLACEMENT OF THE GOODS, THE SUPPLY OF EQUIVALENT GOODS, THE PAYMENT OF THE COST OF SUCH REPAIR OR REPLACEMENT OR THE ACQUISITION OF EQUIVALENT GOODS.

CATERPILLAR EXCLUDES ALL LIABILITY FOR OR ARISING FROM ANY NEGLIGENCE ON ITS PART OR ON THE PART OF ANY OF ITS EMPLOYEES, AGENTS OR REPRESENTATIVES IN RESPECT OF THE MANUFACTURE OR SUPPLY OF GOODS OR THE PROVISION OF SERVICES RELATING TO THE GOODS.

CATERPILLAR IS NOT LIABLE FOR INCIDENTAL OR CONSEQUENTIAL DAMAGES UNLESS IMPOSED UNDER MANDATORY RIGHTS. IF OTHERWISE APPLICABLE, THE VIENNA CONVENTION (CONTRACTS FOR THE INTERNATIONAL SALE OF GOODS) IS EXCLUDED IN ITS ENTIRETY.

C) For products supplied in Australia:

IF THE PRODUCTS TO WHICH THIS WARRANTY APPLIES ARE:

- I. PRODUCTS OF A KIND ORDINARILY ACQUIRED FOR PERSONAL, DOMESTIC OR HOUSEHOLD USE OR CONSUMPTION; OR
- II. PRODUCTS THAT COST AUD 40,000 OR LESS,

WHERE THOSE PRODUCTS WERE NOT ACQUIRED FOR THE PURPOSE OF RE-SUPPLY OR FOR THE PURPOSE OF USING THEM UP OR TRANSFORMING THEM IN THE COURSE OF PRODUCTION OR MANUFACTURE OR IN THE COURSE OF REPAIRING OTHER GOODS OR FIXTURES, THEN THIS SECTION C APPLIES.

THE FOLLOWING MANDATORY TEXT IS INCLUDED PURSUANT TO THE AUSTRALIAN CONSUMER LAW AND INCLUDES REFERENCES TO RIGHTS THE USER MAY HAVE AGAINST THE DIRECT SUPPLIER OF THE PRODUCTS: OUR GOODS COME WITH GUARANTEES THAT CANNOT BE EXCLUDED UNDER THE AUSTRALIAN CONSUMER LAW. YOU ARE ENTITLED TO A REPLACEMENT OR REFUND FOR A MAJOR FAILURE AND COMPENSATION FOR ANY OTHER REASONABLY FORESEEABLE LOSS OR DAMAGE. YOU ARE ALSO ENTITLED TO HAVE THE GOODS REPAIRED OR REPLACED IF THE GOODS FAIL TO BE OF ACCEPTABLE QUALITY AND THE FAILURE DOES NOT AMOUNT TO A MAJOR FAILURE. THE INCLUSION OF THIS TEXT DOES NOT CONSTITUTE ANY REPRESENTATION OR ACCEPTANCE BY CATERPILLAR OF LIABILITY TO THE USER OR ANY OTHER PERSON IN ADDITION TO THAT WHICH CATERPILLAR MAY HAVE UNDER THE AUSTRALIAN CONSUMER LAW.

TO THE EXTENT THE PRODUCTS FALL WITHIN THIS SECTION C BUT ARE NOT OF A KIND ORDINARILY ACQUIRED FOR PERSONAL, DOMESTIC OR HOUSEHOLD USE OR CONSUMPTION, CATERPILLAR LIMITS ITS LIABILITY TO THE EXTENT IT IS PERMITTED TO DO SO UNDER THE AUSTRALIAN CONSUMER LAW TO, AT ITS OPTION, THE REPAIR OR REPLACEMENT OF THE PRODUCTS, THE SUPPLY OF EQUIVALENT PRODUCTS, OR THE PAYMENT OF THE COST OF SUCH REPAIR OR REPLACEMENT OR THE ACQUISITION OF EQUIVALENT PRODUCTS.

THE WARRANTY SET OUT IN THIS DOCUMENT IS GIVEN BY CATERPILLAR INC. OR ANY OF ITS SUBSIDIARIES, 100 N. E. ADAMS ST, PEORIA, IL USA 61629, TELEPHONE 1 309 675 1000. THE USER IS RESPONSIBLE FOR ALL COSTS ASSOCIATED WITH MAKING A CLAIM UNDER THE WARRANTY SET OUT IN THIS DOCUMENT, EXCEPT AS EXPRESSLY STATED OTHERWISE IN THIS DOCUMENT, AND THE USER IS REFERRED TO THE BALANCE OF THE DOCUMENT TERMS CONCERNING CLAIM PROCEDURES, CATERPILLAR RESPONSIBILITIES AND USER RESPONSIBILITIES.

TO THE EXTENT PERMISSIBLE BY LAW, THE TERMS SET OUT IN THE REMAINDER OF THIS WARRANTY DOCUMENT (INCLUDING SECTION B) CONTINUE TO APPLY TO PRODUCTS TO WHICH THIS SECTION C APPLIES.

©2014 Caterpillar All Rights Reserved. CAT, CATERPILLAR, their respective logos, "Caterpillar Yellow," the "Power Edge" trade dress as well as corporate and product identity used herein, are trademarks of Caterpillar and may not be used without permission.

CONTROL YOUR COSTS MINIMIZE YOUR RISKS

This plan safeguards your investments in new, used and rebuilt machines beyond the standard warranty period. It includes all parts and labor to protect you against failures caused by defects in materials and workmanship. With the Powertrain Equipment Protection Plan, you can increase the predictability of service and maintenance costs—and reduce unplanned downtime.

WHAT WE DO

- Perform necessary inspections to confirm eligibility
- Install parts approved by Caterpillar on covered repairs
- Validate your enrollment in the program

WHAT YOU DO

- Operate equipment according to the Cat Operation & Maintenance Manual (OMM)
- Have recommended preventive maintenance performed at intervals specified in the OMM
- Upon request, provide proof of preventive maintenance compliance (receipts, copies of work orders, invoices)
- Promptly provide the machine for repair in the event of a covered failure

COVERED COMPONENTS

Engine & Accessories

Engine - Internal Components

Oil Cooler

Manifolds

Fan Motor

Water Pump

Fuel Injection Pumps

Injectors

Lift / Transfer Pump

Senders / Solenoids / Sensors

Thermostat

Flywheel & Torque Converter

Engine Oil Filter Mount

Turbocharger

AC Compressor / Condenser

Electronic Control Modules

Oil Hoses / Lines (non-hydrostatic)

Cylinder Block

Piston

Piston Rings

Piston & Connecting Rod

Crankshaft, Main Bearings & Rod

Bearings

Camshaft & Camshaft Bearings

Timing / Accessory Gears

Timing Chain / Belt

Inlet / Exhaust Valve

Valve Cover & Base

Valve Spring & Guide

Rocker Arm

Rocker Shaft Assembly

Push Rod

Balancer

Fuel Pump / Governor Drive

Oil Pump

Oil Pan Group

Fan & Fan Drive

Transmission

Transmissions

Hydraulic Controls

Transmission Oil Filter Base

Transmission Gears

Final Drives/Planetary

Drive Shafts

Transfer Case

Hydrostatic Pumps &

Drive Motors

Linkage / Lines Connected to

Hystat Pump

Drive (pilot / eh) Control Valves

Bevel and Transfer Case

Drive Line/Drive Axle

Axles

Axle Seals

Final Drive & Wheel

Final Drive Case / Bore

Final Drive Chain

Final Drive Gears

Axle Shaft

Drive Axle Oil Pump

Steering

Steering Clutch

Steering Clutch & Brake Control Valve

Hydraulic Systems

Hydraulic Oil Coolers

EXCLUSIONS

If a component is not listed, it may not be included in the plan. Other exclusions include:

- > Improper or abusive use of the machine
 - > Lubricating oil, antifreeze, filters, consumables and other maintenance items replaced during the covered component repair, unless such items are rendered unusable by a covered component failure
 - > Failures caused by normal wear-out
 - > Freight charges for parts shipments
 - > Travel time and mileage involved in getting to a job site
 - > Hauling costs and / or retrieval costs
 - > Overtime labor costs
 - > Repair costs resulting from the failure of any non-covered components
 - > Downtime loss
 - > Equipment rental charges
 - > Any incidental / consequential damages or costs incurred as a result of a covered component failure.
 - > Modifications unless approved by Caterpillar
- Examples of covered and excluded components or items are listed here. The actual dealer contract will govern. For a complete list of included components and more information on Cat Equipment Protection Plans, contact your local Cat dealer.**



Employment Eligibility Verification

Version:
Terence Minton

User ID:
TMOF9402

Last Login:
09:22 AM - 01/06/2012 Log Out

Click any for help

[Home](#)

[My Cases](#)

[New Case](#)

[View Cases](#)

[Search Cases](#)

[My Profile](#)

[Edit Profile](#)

[Change Password](#)

[Change Security Questions](#)

[My Company](#)

[Edit Company Profile](#)

[Add New User](#)

[View Existing Users](#)

[Close Company Account](#)

[My Reports](#)

[View Reports](#)

[My Resources](#)

[View Essential Resources](#)

[Take Tutorial](#)

[View User Manual](#)

[Contact Us](#)

Company Information

Company Name: Thompson Tractor Co., Inc.

[View / Edit](#)

Company ID Number: 47130

Doing Business As (DBA)
Name:

DUNS Number:

Physical Location:

Address 1: 2401 Pinson Highway

Address 2:

City: Birmingham

State: AL

Zip Code: 35217

County: JEFFERSON

Mailing Address:

Address 1: P O. Box 10367

Address 2:

City: Birmingham

State: AL

Zip Code: 35202-0367

Additional Information:

Employer Identification Number: 630377478

Total Number of Employees: 1,000 to 2,499

Parent Organization:

Administrator:

Organization Designation:

Employer Category:

NAICS Code: 423 - MERCHANT WHOLESALERS, DURABLE GOODS

[View / Edit](#)

Total Hiring Sites: 40

[View / Edit](#)

Total Points of Contact: 3

[View / Edit](#)

[View / Edit](#)

Request for Taxpayer Identification Number and Certification

Give form to the
requester. Do not
send to the IRS.

Print or type
See Specific Instructions on page 2.

| | |
|--|--|
| Name (as shown on your income tax return) Thompson Tractor Co., Inc. DBA Thompson Power Systems, Thompson Lift Truck Co. | |
| Business name, if different from above and The Cat Rent Store | |
| Check appropriate box: <input type="checkbox"/> Individual/Sole proprietor <input checked="" type="checkbox"/> Corporation <input type="checkbox"/> Partnership <input type="checkbox"/> Limited liability company. Enter the tax classification (D=disregarded entity, C=corporation, P=partnership) ▶ <input checked="" type="checkbox"/> Exempt payee <input type="checkbox"/> Other (see instructions) ▶ | |
| Address (number, street, and apt. or suite no.) P O Box 10367 2401 Pinson Hwy. Tarrant, AL 35217 | |
| City, state, and ZIP code Birmingham, AL 35202-0367 | |
| List account number(s) here (optional) Lockbox Remit To: P O Box 934065, Atlanta, GA 31193-4005 | |
| Requester's name and address (optional) | |

Part I Taxpayer Identification Number (TIN)

Enter your TIN in the appropriate box. The TIN provided must match the name given on Line 1 to avoid backup withholding. For individuals, this is your social security number (SSN). However, for a resident alien, sole proprietor, or disregarded entity, see the Part I Instructions on page 3. For other entities, it is your employer identification number (EIN). If you do not have a number, see *How to get a TIN* on page 3.

Note. If the account is in more than one name, see the chart on page 4 for guidelines on whose number to enter.

| |
|---|
| Social security number : : : |
| or Employer identification number 63 : 0377478 |

Part II Certification

Under penalties of perjury, I certify that:

- The number shown on this form is my correct taxpayer identification number (or I am waiting for a number to be issued to me), and
- I am not subject to backup withholding because: (a) I am exempt from backup withholding, or (b) I have not been notified by the Internal Revenue Service (IRS) that I am subject to backup withholding as a result of a failure to report all interest or dividends, or (c) the IRS has notified me that I am no longer subject to backup withholding, and
- I am a U.S. citizen or other U.S. person (defined below).

Certification instructions. You must cross out item 2 above if you have been notified by the IRS that you are currently subject to backup withholding because you have failed to report all interest and dividends on your tax return. For real estate transactions, item 2 does not apply. For mortgage interest paid, acquisition or abandonment of secured property, cancellation of debt, contributions to an individual retirement arrangement (IRA), and generally, payments other than interest and dividends, you are not required to sign the Certification, but you must provide your correct TIN. See the Instructions on page 4.

Sign Here Signature of U.S. person ▶ Linda K. Dunbar, Controller Date ▶

General Instructions

Section references are to the Internal Revenue Code unless otherwise noted.

Purpose of Form

A person who is required to file an information return with the IRS must obtain your correct taxpayer identification number (TIN) to report, for example, income paid to you, real estate transactions, mortgage interest you paid, acquisition or abandonment of secured property, cancellation of debt, or contributions you made to an IRA.

Use Form W-9 only if you are a U.S. person (including a resident alien), to provide your correct TIN to the person requesting it (the requester) and, when applicable, to:

- Certify that the TIN you are giving is correct (or you are waiting for a number to be issued),
- Certify that you are not subject to backup withholding, or
- Claim exemption from backup withholding if you are a U.S. exempt payee. If applicable, you are also certifying that as a U.S. person, your allocable share of any partnership income from a U.S. trade or business is not subject to the withholding tax on foreign partners' share of effectively connected income.

Note. If a requester gives you a form other than Form W-9 to request your TIN, you must use the requester's form if it is substantially similar to this Form W-9.

Definition of a U.S. person. For federal tax purposes, you are considered a U.S. person if you are:

- An individual who is a U.S. citizen or U.S. resident alien,
- A partnership, corporation, company, or association created or organized in the United States or under the laws of the United States,
- An estate (other than a foreign estate), or
- A domestic trust (as defined in Regulations section 301.7701-7).

Special rules for partnerships. Partnerships that conduct a trade or business in the United States are generally required to pay a withholding tax on any foreign partners' share of income from such business. Further, in certain cases where a Form W-9 has not been received, a partnership is required to presume that a partner is a foreign person, and pay the withholding tax. Therefore, if you are a U.S. person that is a partner in a partnership conducting a trade or business in the United States, provide Form W-9 to the partnership to establish your U.S. status and avoid withholding on your share of partnership income.

The person who gives Form W-9 to the partnership for purposes of establishing its U.S. status and avoiding withholding on its allocable share of net income from the partnership conducting a trade or business in the United States is in the following cases:

- The U.S. owner of a disregarded entity and not the entity,

Company ID Number: 47130

the Employer issues a tentative nonconfirmation based upon a photo non-match. The Employer will determine whether the employee contests the tentative nonconfirmation as soon as possible after the Employer receives it.

4. If the employee contests a tentative nonconfirmation issued by DHS, the Employer will provide the employee with a referral letter and instruct the employee to contact the Department through its toll-free hotline within 8 Federal Government work days.

5. If the employee contests a tentative nonconfirmation based upon a photo non-match, the Employer will provide the employee with a referral letter to DHS. DHS will electronically transmit the result of the referral to the Employer within 10 Federal Government work days of the referral unless it determines that more than 10 days is necessary.

6. The Employer agrees that if an employee contests a tentative nonconfirmation based upon a photo non-match, the Employer will send a copy of the employee's Form I-551 or Form I-766 to DHS for review by:

- Scanning and uploading the document, or
- Sending a photocopy of the document by an express mail account (furnished and paid for by DHS).

7. The Employer understands that if it cannot determine whether there is a photo match/non-match, the Employer is required to forward the employee's documentation to DHS by scanning and uploading, or by sending the document as described in the preceding paragraph, and resolving the case as specified by the Immigration Services Verifier at DHS who will determine the photo match or non-match.

ARTICLE IV

SERVICE PROVISIONS

The SSA and DHS will not charge the Employer for verification services performed under this MOU. The Employer is responsible for providing equipment needed to make inquiries. To access the E-Verify System, an Employer will need a personal computer with Internet access.

ARTICLE V

PARTIES

This MOU is effective upon the signature of all parties, and shall continue in effect for as long as the SSA and DHS conduct the E-Verify program unless modified in writing by the mutual consent of all parties, or terminated by any party upon 30 days prior written notice to the others. Any and all system enhancements to the E-Verify program by DHS or SSA, including but not limited to the E-Verify checking against additional data sources and instituting new verification procedures, will be covered under this MOU and will not cause the need for a supplemental MOU that outlines these changes. DHS agrees to train employers on all changes made to E-Verify through the use of mandatory refresher tutorials and updates to the E-Verify manual. Even

Company ID Number: 47130

without changes to E-Verify, the Department reserves the right to require employers to take mandatory refresher tutorials.

Termination by any party shall terminate the MOU as to all parties. The SSA or DHS may terminate this MOU without prior notice if deemed necessary because of the requirements of law or policy, or upon a determination by SSA or DHS that there has been a breach of system integrity or security by the Employer, or a failure on the part of the Employer to comply with established procedures or legal requirements. Some or all SSA and DHS responsibilities under this MOU may be performed by contractor(s), and SSA and DHS may adjust verification responsibilities between each other as they may determine.

Nothing in this MOU is intended, or should be construed, to create any right or benefit, substantive or procedural, enforceable at law by any third party against the United States, its agencies, officers, or employees, or against the Employer, its agents, officers, or employees.

Each party shall be solely responsible for defending any claim or action against it arising out of or related to E-Verify or this MOU, whether civil or criminal, and for any liability wherefrom, including (but not limited to) any dispute between the Employer and any other person or entity regarding the applicability of Section 403(d) of IIRIRA to any action taken or allegedly taken by the Employer.

The employer understands that the fact of its participation in E-Verify is not confidential information and may be disclosed as authorized or required by law and DHS or SSA policy, including but not limited to, Congressional oversight, E-Verify publicity and media inquiries, and responses to inquiries under the Freedom of Information Act (FOIA).

The foregoing constitutes the full agreement on this subject between the SSA, DHS, and the Employer.

The individuals whose signatures appear below represent that they are authorized to enter into this MOU on behalf of the Employer and DHS respectively.

To be accepted as a participant in E-Verify, you should only sign the Employer's Section of the signature page. If you have any questions, contact E-Verify Operations at 888-464-4218.

Employer Thompson Tractor Co., Inc.

Frank M Wright

Name (Please type or print)

Title

Electronically Signed

07/11/2007

Signature

Date

Department of Homeland Security – Verification Division

Company ID Number: 47130

**INFORMATION REQUIRED
FOR THE E-VERIFY PROGRAM**

Information relating to your Company:

Company Name: Thompson Tractor Co., Inc.

Company Facility Address: 2401 Pinson Highway
Birmingham, AL 35217

Company Alternate Address: P.O. Box 10367
Birmingham, AL 35202-0367

County or Parish: JEFFERSON

Employer Identification Number: 630377478

North American Industry
Classification Systems Code: 423

Parent Company: _____

Number of Employees: 1,000 to
2,499 Number of Sites Verified for: 5

Are you verifying for more than 1 site? If yes, please provide the number of sites verified for in each State.

- GEORGIA 5 site(s)

Information relating to the Program Administrator(s) for your Company on policy questions or operational problems:

| | | |
|-------------------|-----------------------------------|------------------------------|
| Name: | Kimberly A Stark | |
| Telephone Number: | (205) 849 - 4279 | Fax Number: (205) 849 - 4565 |
| E-mail Address: | kimberlystark@thompsontractor.com | |
| Name: | Frank M Wright | |
| Telephone Number: | (205) 849 - 4267 | Fax Number: (205) 849 - 4854 |
| E-mail Address: | frankwright@thompsontractor.com | |

Company ID Number: 47130

USCIS Verification Division

Name (Please type or print)

Title

Electronically Signed

07/11/2007

Signature

Date