

BID SUBMITTAL FORM
Alabama County Joint Bidding Program
Heavy Equipment – Bid Item: TRACK-MOUNTED HYDRAULIC EXCAVATOR
Option B-3

Company Name: TRACTOR & EQUIPMENT Co. Inc.
Address: P.O. Box 12326
BIRMINGHAM, AL 35212
Bid Submitted by: JOE PATTON
(Name of company representative)
Title: V.P. E-mail address: jpatton@tec1943.com
Phone: (205) 591-2131 Fax: (205) 591-8321

By submitting this bid, we agree:

The equipment model number identified below meets the bid specs for this bid item

That the bid price will be honored for all counties for the period from Jan. 1, 2024 to Dec. 31, 2024.

The equipment will be delivered at the bid price to all counties participating in the joint bid program

The company representative listed above will be the contact person for purchasing this bid item under the joint bid program

The bid is accompanied by a current catalog or model specification document for the model number identified below

The bid is accompanied by a copy of the manufacturer's standard warranty as required in the bid specifications

The bid includes the e-verify documentation required by Alabama law

If awarded the bid, a performance bond will be provided upon request

The bid documents include the **Manufacturer's Suggested Retail Price Sheet (MSRP) for the Standard Machine**

Initials

JP

JP

JP

JP

JP

JP

JP

JP

JP

JP

JP

NO

TRACK-MOUNTED HYDRAULIC EXCAVATOR
Option B-3

Total Bid Price for Standard Machine: \$ 257,785.⁰⁰ *
(Total Bid Price for Standard Machine Includes Freight Preparation, Delivery and Standard Warranty Costs)*

Freight Preparation and Delivery: \$ 4900.⁰⁰
(Included in Standard Machine Bid Price)

Manufacturer's Suggested Retail Price for Standard Machine: \$ 385,214.⁰⁰

Equipment Model #: KOMATSU PC210LC-11

Description: TRACK MOUNTED Hydraulic EXCAVATOR

Signature of company representative submitting bid: _____

Title: _____

VP

* **NOTE:** Award will be made based on the total cost of the **Standard Machine**. The total cost of the standard machine is to include the freight preparation, delivery and standard warranty cost. Freight preparation, delivery will be excluded from the total bid price of the standard machine in determining the percentage discount for any available options.

* Price Includes a 60 month - 3000

Hour Premier WARRANTY with TEC

KOMATSU CARE Services Included &

* No Travel Time or Mileage Charged

on a WARRANTY Claim *

BID SUBMITTAL FORM: OPTION COST SHEET
TRACK-MOUNTED HYDRAULIC EXCAVATOR
Option B-3

By submitting this bid, we agree:

To offer any available options at the percent difference between the Manufacturer's Suggested Retail Price Sheet and the actual bid price on the Standard Machine*

The bid documents include the Manufacturer's Suggested Retail Price Sheet (MSRP) with **any available Options** for the Standard Machine

4%
4%

Equipment Model #: KOMATSU PC240LC-11

Description: TRACK MOUNTED Hydraulic Excavator (OPTION B-3)

Signature of company representative submitting bid: 

Title: VP

***Note:** The percent difference between the **Manufacturer's Suggested Retail Price Sheet (MSRP)** for the standard machine as specified by these **Bid Specifications** and the actual price bid by the vendor will be calculated to determine the percentage discount to be applied to any available options. The bid price of the freight preparation, delivery cost shall be excluded in determining the percentage discount to be applied to available options. Any individual county may choose to add any available option to the standard machine at the percentage discount at the time of purchase.

* Price Includes a 60 month -

3000 Hour Premier WARRANTY

with KOMATSU CARE Services Included *

* No Travel Time or Mileage Charged on
A WARRANTY Claim *

**BID SPECIFICATIONS
FOR
TRACK-MOUNTED HYDRAULIC EXCAVATOR
Option B-3**

GENERAL

These specifications shall be construed as the minimum acceptable standards for a track mounted hydraulic excavator with long undercarriage. Should the manufacturer's current published data or specifications exceed these standards, the manufacturer's standards shall be considered minimum and shall be furnished. All integral parts not specifically mentioned in the scope of these specifications that are necessary to provide a complete working unit shall be furnished. Additionally, the machine offered for bid shall include all standard manufacturers' equipment. The excavator must be a new current production model and shall meet all EPA and other applicable standards at the time of manufacture.

Use of specific names and numbers in the specifications is not intended to restrict the bidder or any seller or manufacturer, but is intended solely for the purpose of indicating the type, size and quality of equipment considered best adapted to the uses of the counties participating in this joint bid.

BID SUBMITTAL FORM

Each bidder must submit his or her bid on the bid submittal form included in the invitation to bid package. All written warranties to be submitted shall be attached to the bid submittal form.

BID PRICE

The price bid shall include all destination charges, delivery charges, title fees, rebates, and all other applicable costs and refunds.

MANUALS

Each unit shall be provided with one (1) copy of the operator's manual, one [1] repair manual, and one (1) copy of the current parts manual. Units will not be accepted for delivery until the manuals as outlined above are received by the purchaser.

REPLACEMENT PARTS AVAILABILITY

Parts must be available for 5 years or 7,500 hours of use for the piece of equipment. If any replacement parts are not delivered within three (3) working days of an order being placed, the bidder will deliver an equivalent machine for the county to use at no cost to the county until such time as the parts are delivered to the county so it can affect repairs to its machine.

WARRANTY

Bidders shall submit a copy of the manufacturer's standard warranty. Warranty shall include service response time of maximum of 36 hours within notification by county.

Yes ☒ No ☐
Page#
Or Attachment ☒

WEIGHT

Minimum 53,000 lbs. ✓

Yes ☒ No ☐
Page # ~~20~~ 20

Six (6) cylinders, minimum 408 cubic inch diesel engine with minimum 165 net flywheel horsepower.

Yes ☒ No ☐
Page # ~~20~~ 20

Engine must be designed and built by the machine manufacturer.

Yes ☒ No ☐
Page # ~~20~~ 20

STARTING SYSTEM

Shall be equipped with a 24-volt electrical system.

Yes ☒ No ☐
Page # ~~24~~ 24

Shall be equipped with a 12-volt converter capable of powering a two-way radio.

Yes ☒ No ☐
Page # ~~24~~ 24

UNDERCARRIAGE

Track length shall be minimum 14,5'.

Yes ☒ No ☐
Page # ~~21~~ 21

Track shoe width shall be minimum 31".

Yes ☒ No ☐
Page # ~~20~~ 20

Minimum eight (8) track rollers per side.

Yes ☒ No ☐
Page # ~~20~~ 20

Minimum two (2) carrier rollers per side.

Yes ☒ No ☐
Page # ~~20~~ 20

CAPACITIES

Fuel Tank Capacity – 105-gallon minimum

Yes ☒ No ☐
Page # ~~20~~ 20

Hydraulic Tank Capacity – 34-gallon minimum

Yes ☒ No ☐
Page # ~~20~~ 20

Engine Coolant – 7.5-gallon minimum

Yes ☒ No ☐
Page # ~~20~~ 20

BOOM AND STICK

One-piece boom with minimum 18' length

Yes ☒ No ☐
Page # ~~20~~ 20

Stick shall be a minimum 9.5' long

Yes ☒ No ☐
Page # ~~20~~ 20

DIMENSIONS

Reach at ground level – 31' minimum

Yes ☒ No ☐
Page # ~~22~~ 22

Bucket breakout force – minimum 29,500 lbs.

Yes ☒ No ☐
Page # ~~20~~ 22

Stick digging force – minimum 23,000 lbs.

Yes ☒ No ☐
Page # ~~20~~ 22

HYDRAULICS

Hydraulic pump output shall be a minimum of 125 GPM

Yes ☒ No ☐
Page # ~~20~~ 20

CAB

Enclosed ROPS cab: Heater

Yes ☒ No ☐
Page # ~~20~~ 12/24

Factory installed air conditioning

Yes ☒ No ☐
Page # ~~20~~ 24/12

Defroster

Yes ☒ No ☐
Page # ~~20~~ 20/12/24

Bucket:

Standard with no bucket. Buckets will be considered optional attachments.

KOMATSU®

PC210LC-11 PC210LCi-11

Tier 4 Final Engine

intelligent 2.0
MACHINE CONTROL

HYDRAULIC EXCAVATOR

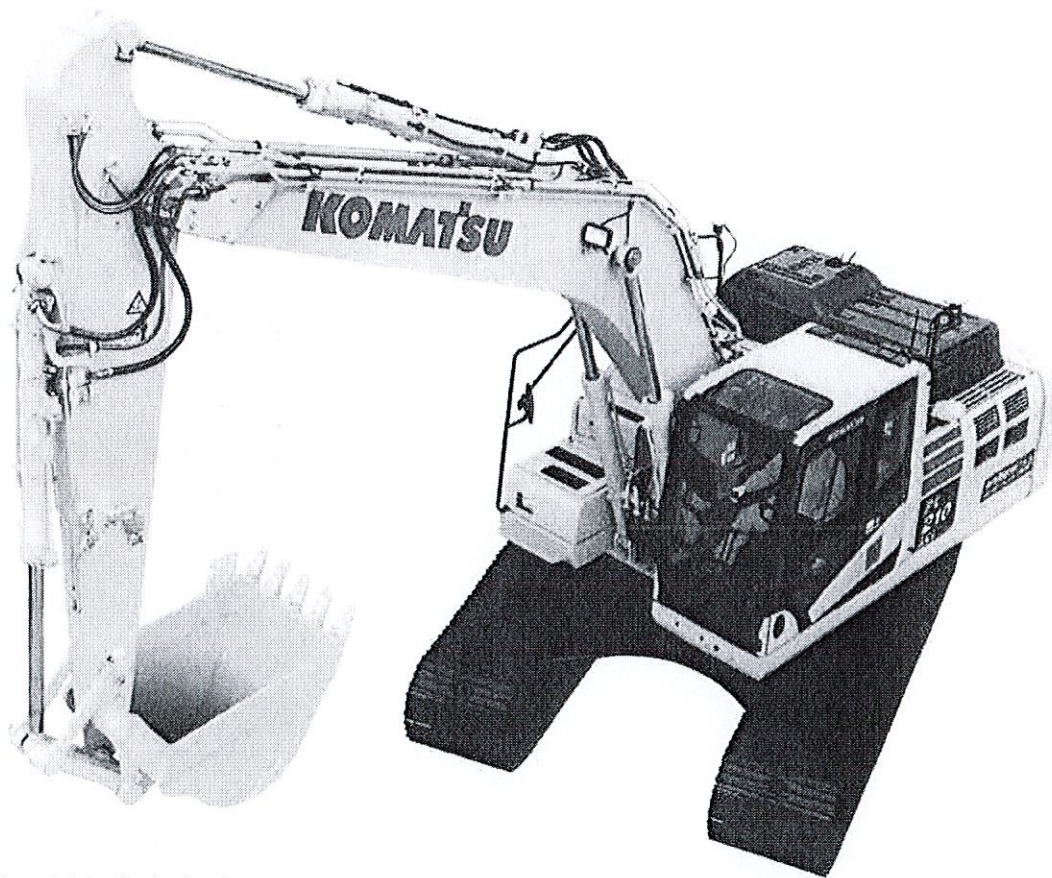


Photo may include optional equipment.

NET HORSEPOWER

165 HP @ 2,000 rpm
123 kW @ 2,000 rpm

OPERATING WEIGHT

51,397-53,882 lbs.
23,313-24,440 kg

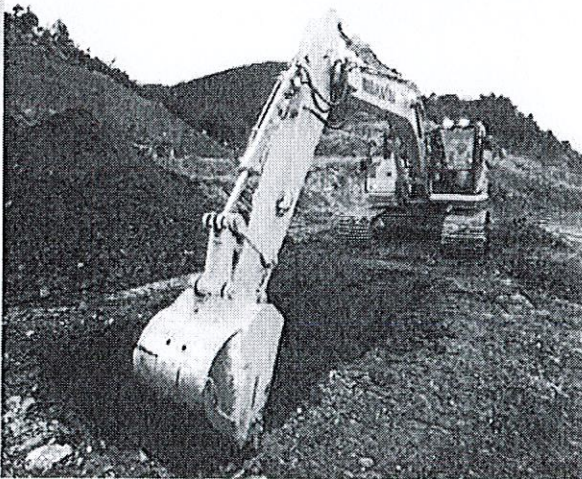
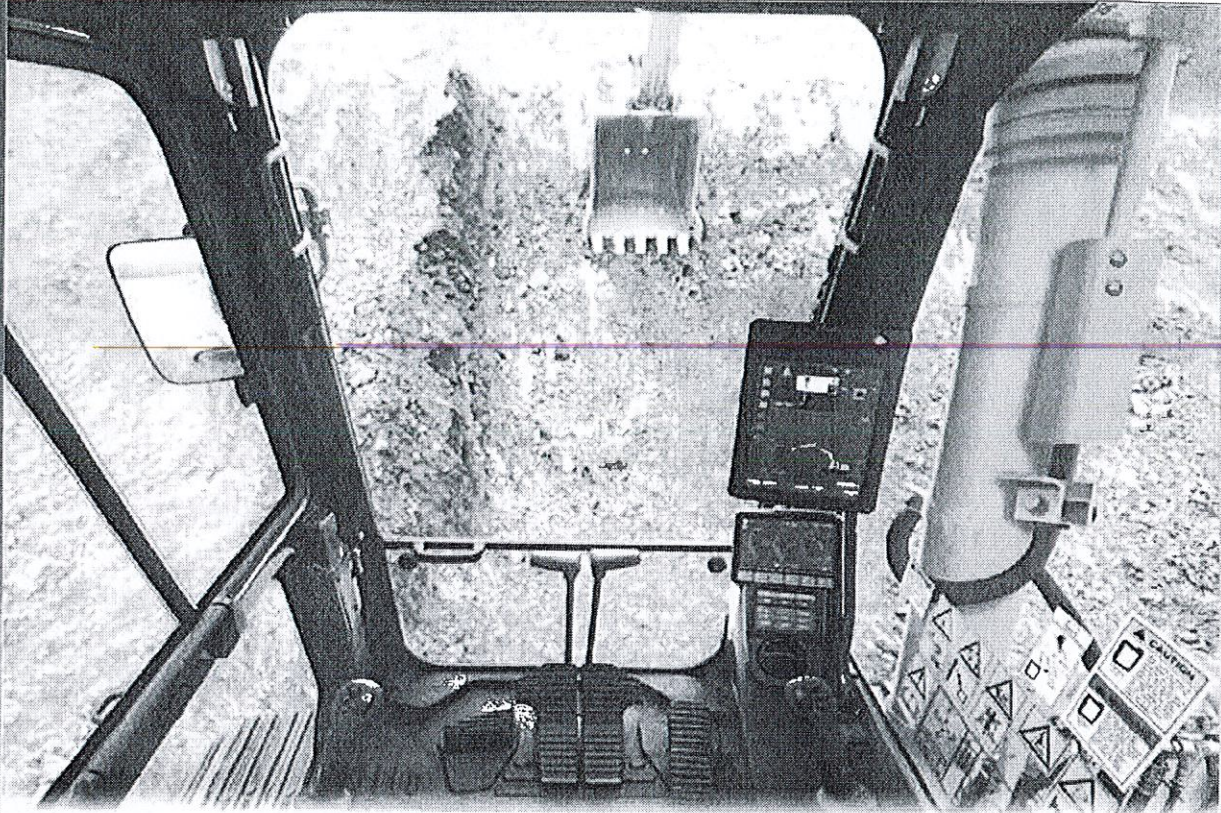
BUCKET CAPACITY

0.66-1.57 yd³
0.50-1.20 m³

PC210LC / PC210LCi

WALK-AROUND

PG210LG-11/PG210LGI-11



NET HORSEPOWER

165 HP @ 2,000 rpm
123 kW @ 2,000 rpm

OPERATING WEIGHT

51,397-53,882 lbs.
23,313-24,440 kg

BUCKET CAPACITY

0.66-1.57 yd³
0.50-1.20 m³

Photos may include optional equipment.



MAKE EVERY PASS COUNT

Improve your efficiency – intelligent Machine Control means fast excavation to finish grade.

Semi-automatic operation – new features such as bucket angle hold control provide high levels of accuracy and comfort.

Innovative

- intelligent Machine Control excavator features semi-automatic operation of work equipment for highly accurate work.
- Compact 10.4" IMC monitor with increased memory capacity, processing speed, and pinch to zoom capability.

NEW

Integrated

- Complete factory-installed and integrated intelligent Machine Control system comes standard with stroke sensing hydraulic cylinders, multiple Global Navigation Satellite System (multi-GNSS) components and an Inertial Measurement Unit (IMU) sensor. All components are validated to Komatsu's rigid quality and durability standards.
- Multi-band UHF/915SS radio improves job site flexibility.
- 4G LTE connectivity for fast reliable job site connectivity.

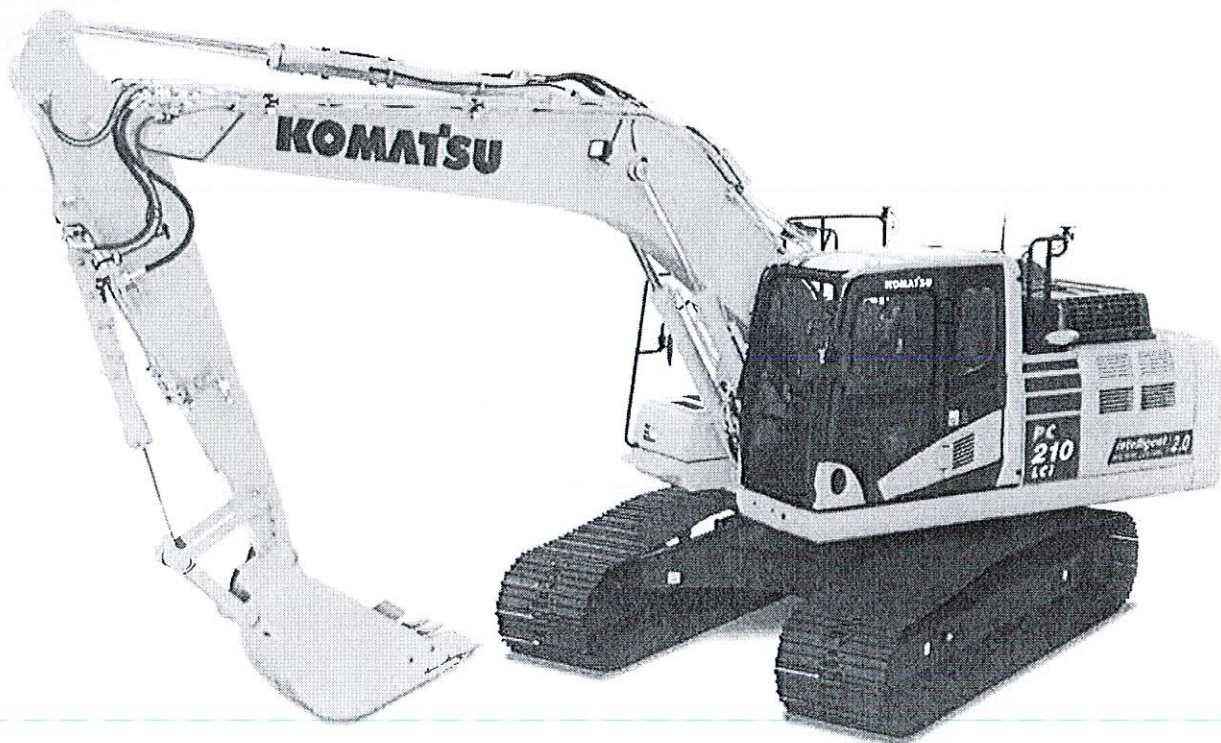
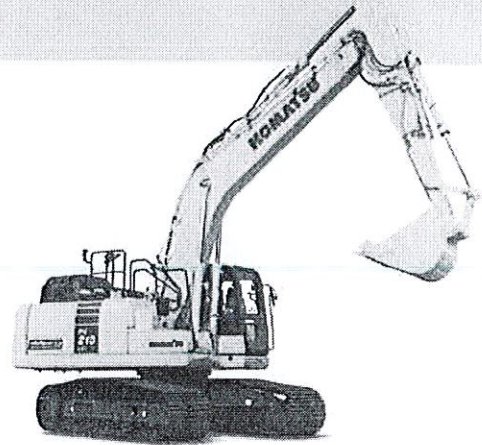
NEW

NEW

Intelligent

- intelligent Machine Control excavator allows the operator to focus on moving material efficiently while semi-automatically tracing the target surface and limiting over-excavation.
- Facing angle compass, light bar and sound guidance aid in ease of operation and bucket positioning.
- Bucket Angle Hold and optional Auto-Tilt Control increase ease of operation and improve productivity and efficiency.

NEW



iNTELLIGENT MACHINE CONTROL

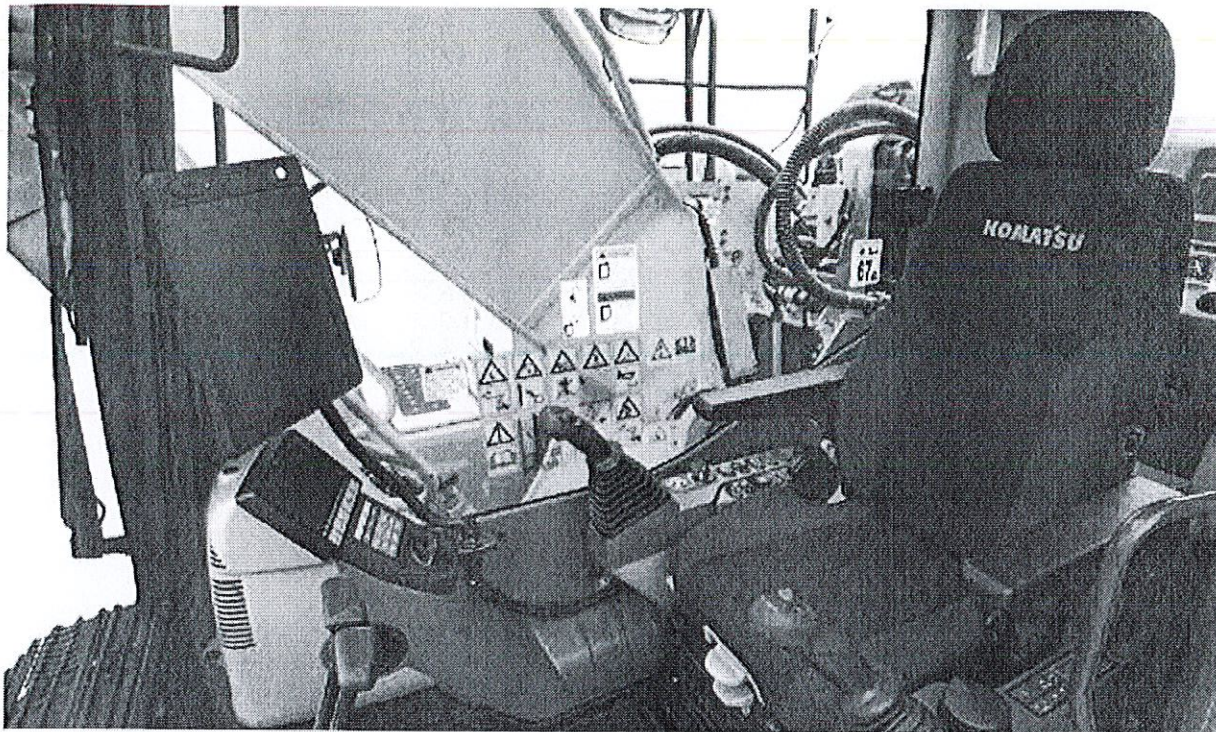
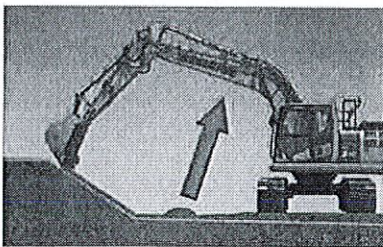


Photo may include optional equipment.

Intelligent Machine Control

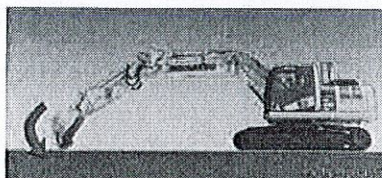
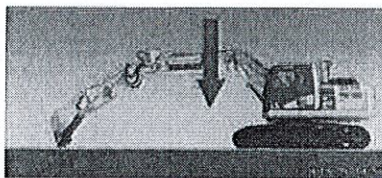
Intelligent Machine Control is based on Komatsu's unique sensor package, including stroke sensing hydraulic cylinders, an IMU sensor, and GNSS antennas. It utilizes 3D design data loaded in the control box to accurately check its position against the target. If the bucket hits the target surface,

it is semi-automatically limited to minimize over-excavation. If the operator turns off Auto mode, the machine can be operated with highly accurate, responsive machine guidance, with the machine only providing indication guidance.



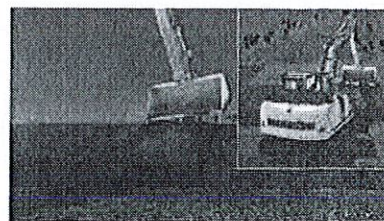
• Auto grade assist

With the auto grade assist function, the operator moves the arm, the boom adjusts the bucket height automatically, tracing the target surface and minimizing digging too deep. This allows the operator to perform rough digging without worrying about the design surface, and to perform fine digging by operating the arm lever only. The working range is extended by holding the lever to move the boom downward.



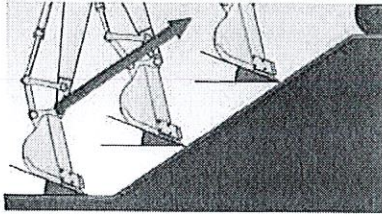
• Auto stop control

During boom or bucket operation, the work equipment automatically stops when the bucket edge reaches the design surface, thus minimizing damage to the design surface.



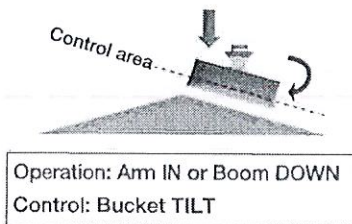
• Minimum distance control

The intelligent Machine Control excavator controls the bucket by automatically selecting the point on the bucket closest to the target surface. Should the machine not be facing a sloped surface at a right angle, it will still follow the target surface and minimize digging below it.



• Bucket angle hold control

Operator sets desired bucket angle and the system automatically maintains bucket angle throughout the grading pass. Angle hold control increases ease of operation and improves final grading accuracy.



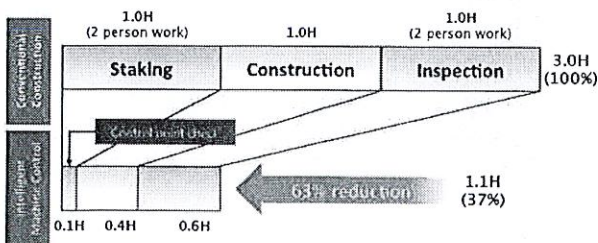
• Auto tilt control

Automatically tilts bucket to design surface and returns it to horizontal to unload. Using auto tilt control with the existing minimum distance control and auto grade assist makes complex grading quicker and easier.

Improved Construction Efficiency

Staking, survey and final inspection (which is usually done manually), can be reduced with the intelligent Machine Control excavator by setting 3D design data on the control box. Also, use of the facing angle compass can minimize leveling work for the surface on which the machine sits. Even if the machine is inclined while working, the facing angle compass allows the operator to ensure that the machine is facing perpendicular to the target surface. The intelligent Machine Control technology allows the operator to improve work efficiency (i.e. shorter construction time) while minimizing over-excavating the target surface from rough digging to finish grading.

Comparison of Construction Time Based On In-House Test of Excavation and Grading Slope Surface*



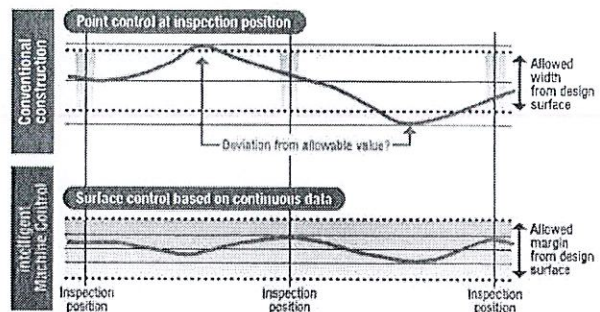
* When used by a qualified iMC operator, the Komatsu intelligent Machine Control system increases construction efficiency.

* The above data does not include design time or working data creation time. The above data is based on in-house construction tests, performed by Komatsu, whose conditions may differ from actual construction.

Improved Work Accuracy

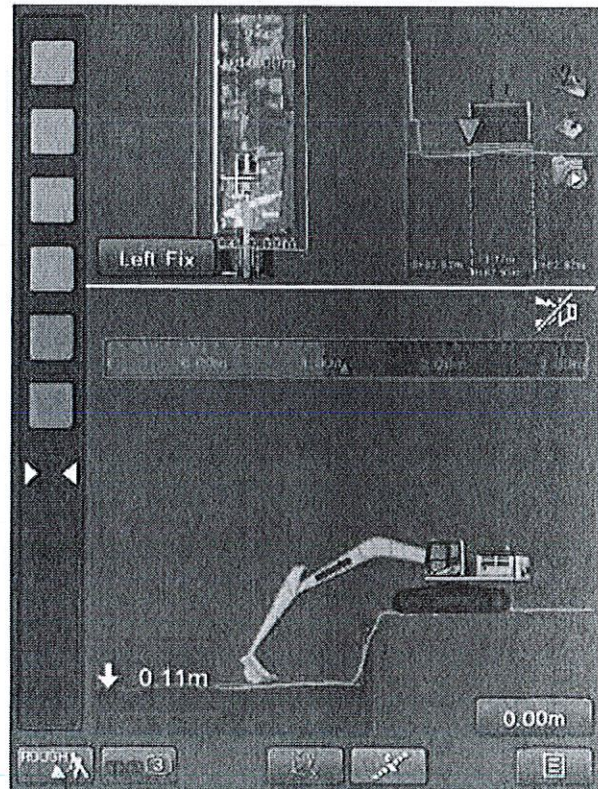
The bucket edge/tip position is instantly displayed on the control box, eliminating the wait time for display on the monitor during construction. The large and easy-to-view control box displays information clearly, aiding in highly accurate work. With manual operation and conventional machine guidance, finish grade quality and excavating accurately depends heavily on the skill of the operator. With the intelligent Machine Control excavator, the bucket is automatically limited to follow the target grade without over-excavating.

Relationship Between Finished Surface and Allowable Value



As-Built Surface Mapping

Operator can display and check the as-built status and find where to cut and fill.



iNTELLIGENT MACHINE CONTROL

CONTROL BOX

The monitor of the Komatsu intelligent Machine Control (control box) uses a compact 10.4" screen for visibility and ease of use. The simple screen layout displays the necessary information in an easily understood fashion. Touch screen icon interface instead of multi-step menu simplifies operation.

Facing angle compass

Light bar

Auto/Manual switch

Bucket edge position selection button

Used to select the bucket edge position (left/middle/right/minimum distance) to determine the distance from the design surface

Pop-up map button
Displays a wide-area map

Edge position recording button

Sound guidance ON/OFF

Bucket edge position check button

GNSS signal reception status check button
Used to check signal reception from the GNSS

Distance from design surface

Design surface offset
The design surface can be offset in the vertical direction

Mode selection button
Driving, Rough digging, Fine digging modes

Main menu button
For various settings

Screen selection button
Use to change the screen layout

Preset Elevation Offset Quick Button

Pre-determined offsets can be stored in the monitor to allow an operator to easily switch between preset grades.

Offset preset	0.000'	Apply
	0.500'	Apply
	1.500'	Apply
Button switch mode	Offset preset	

Quick Bucket Swap Button

Allows users to quickly swap between various buckets without having to enter main menu. This lessens the time a user takes to change out a bucket on the monitor.



Machine Navigation

Facing angle compass

The orientation and color of the facing angle compass's arrow shows the operator the facing angle of the bucket edge relative to the target surface. This allows the bucket edge to be accurately positioned square with the target surface, which is useful when finishing slopes.



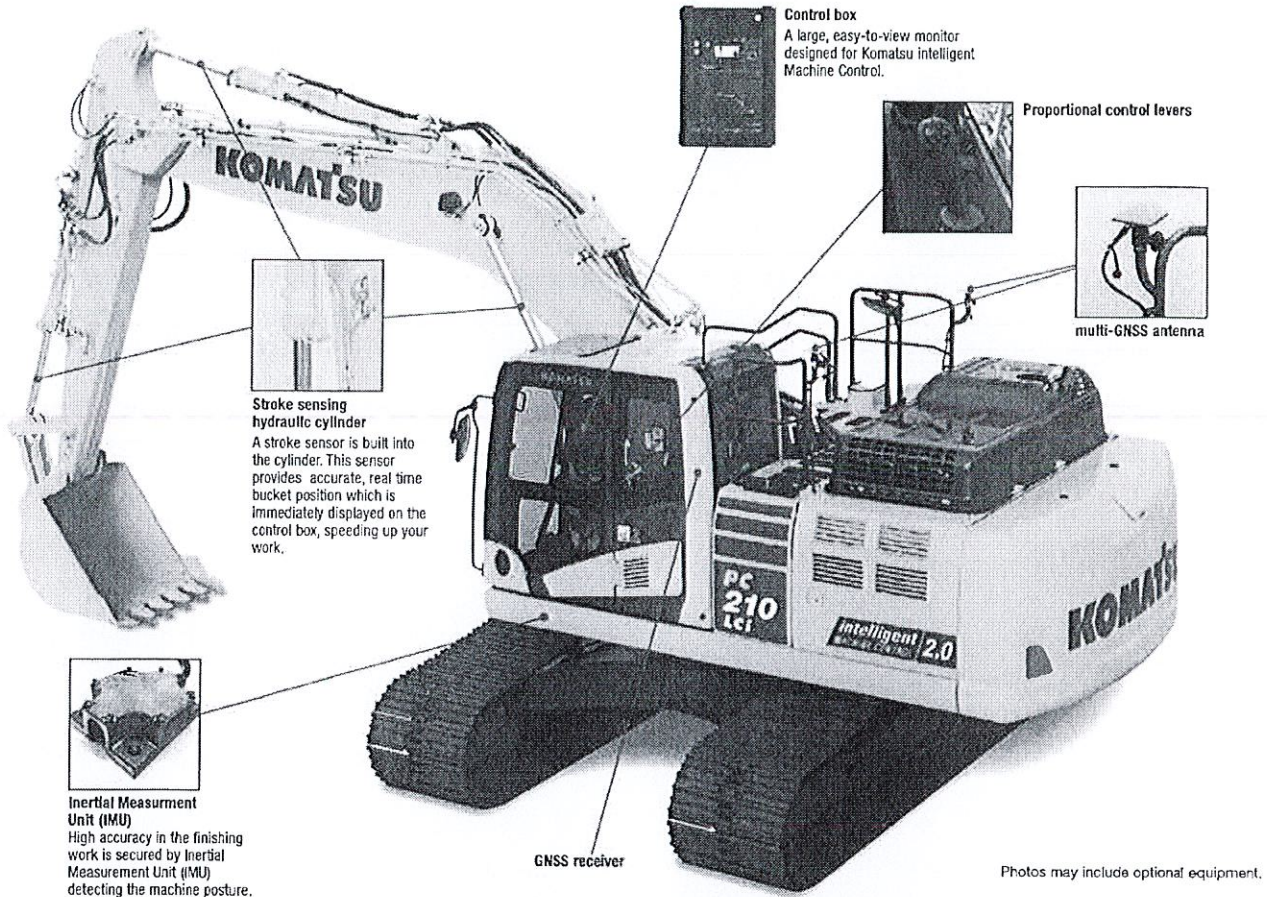
Enhanced operability of the machine control

Semi-auto/manual mode switching and design surface offset function can be operated with switches on the control levers.



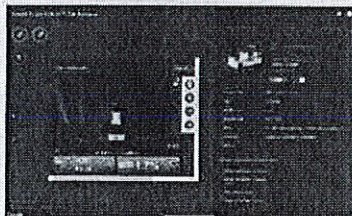
PG210LC-11/PG210LCi-11

Factory installed Komatsu intelligent Machine Control components.



SMARTCONSTRUCTION Remote

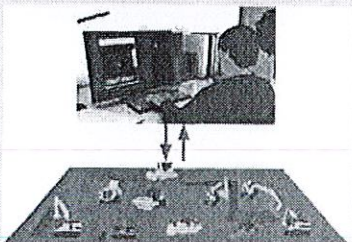
Remote allows customers to quickly send design files to their intelligent machines and provide support to operators in the machine.



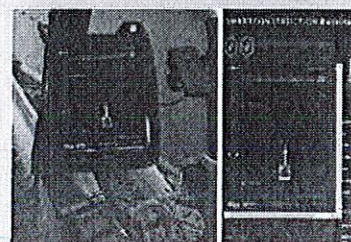
Users can log-in to Remote, locate machines by job site to upload or download design files at any time.



View the machine monitor to troubleshoot or add new files in the machine without the time requirements of traditional methods.



Capable of connecting to mixed fleet customers.



View or navigate machine monitor live with operator.

iNTELLIGENT MACHINE CONTROL

Work smarter from rough digging to finish grade

Give your operators the power to work more effectively than with conventional aftermarket machine guidance (indicate only) or manual operation. Intelligent Machine Control (IMC) excavators with semi-automatic control offer the capability to work smart from rough digging to finish grading, and help minimize over-excavation to make every pass count.

- Semi-automatic for trenching, slope work and high production applications
- Protection + precision + performance = the formula for pursuing maximum productivity versus conventional machine guidance



PC210LCG-11/PC210LCi-11

Working smarter in every way

Benefits of iMC 2.0



Save money

Frees GPS Dozer from need to achieve final grade so it can work elsewhere on the site.



Save time

Reduce staking, grading and inspection with 3D design data and semi-automatic grading.



Less time grade checking

Monitor performance and stay on grade from the cab; operators spend time working, not grade checking.



Improve accuracy

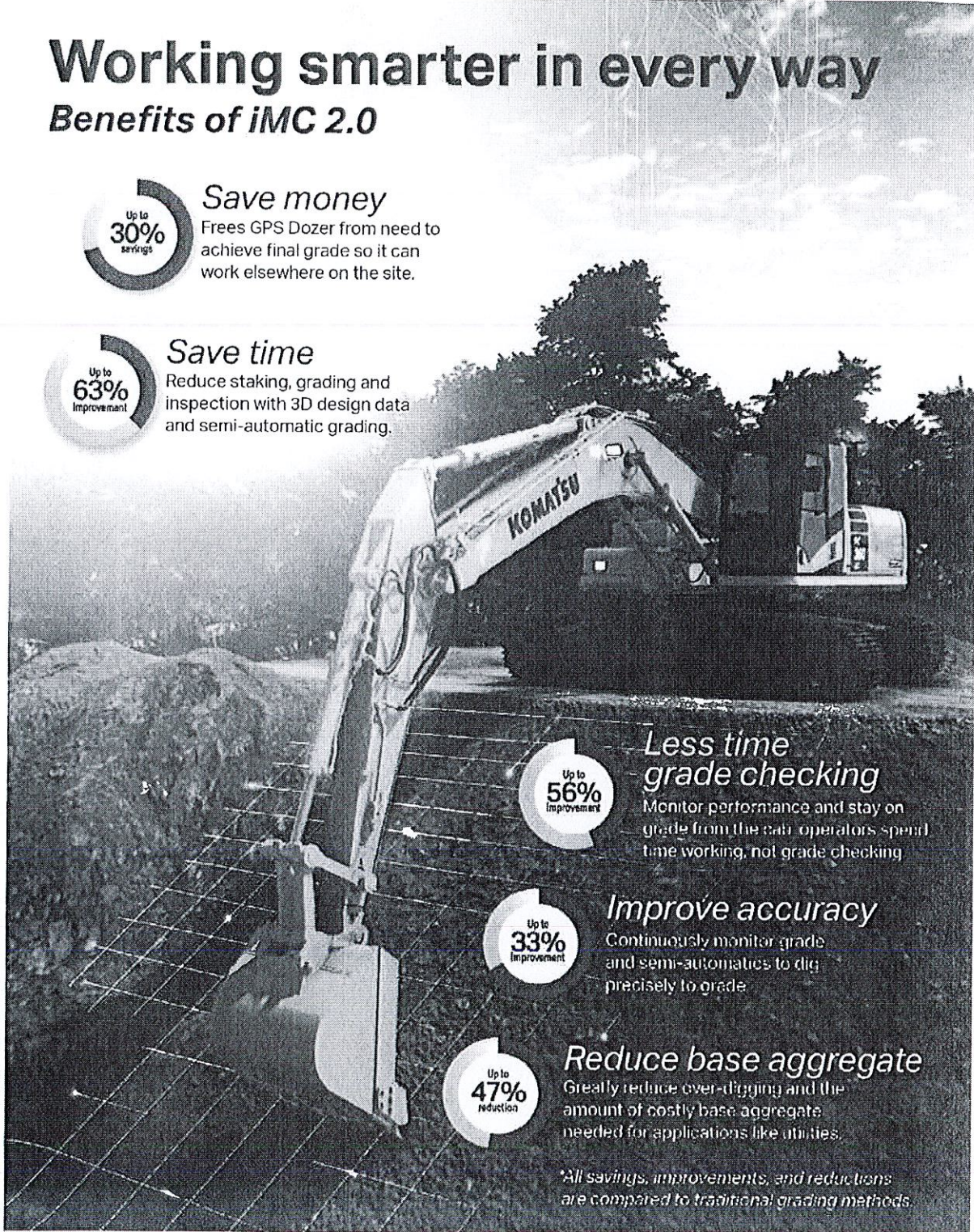
Continuously monitor grade and semi-automates to dig precisely to grade.



Reduce base aggregate

Greatly reduce over-digging and the amount of costly base aggregate needed for applications like utilities.

**All savings, improvements, and reductions are compared to traditional grading methods.*



PERFORMANCE FEATURES

Increased Work Efficiency

Powerful digging force

With the one-touch Power Max. function digging force is increased. (8.5 seconds of operation)

Maximum arm crowd force (ISO)

101 kN(10.3t) ➔ 108 kN(11.0t) **7% UP**
(with Power Max.)

Maximum bucket digging force (ISO)

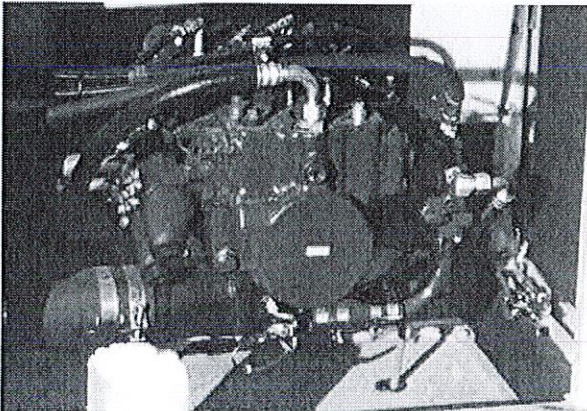
138 kN(14.1t) ➔ 149 kN(15.2t) **8% UP**
(with Power Max.)

Measured with Power Max. function, 3045 mm arm and ISO rating



Large Displacement High Efficiency Pump

Large displacement hydraulic implement pumps provide high flow output at lower engine RPM as well as operation at the most efficient engine speed.

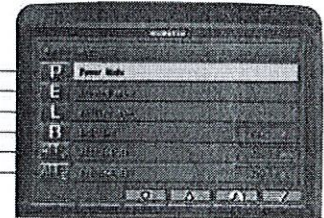


Working Mode Selection

The PC210LCi-11 excavator is equipped with six working modes (P, E, L, B, ATT/P and ATT/E). Each mode is designed to match engine speed, pump flow, and system pressure to the application. The PC210LCi-11 features an attachment mode (ATT/E) that allows operators to run attachments while in Economy mode.

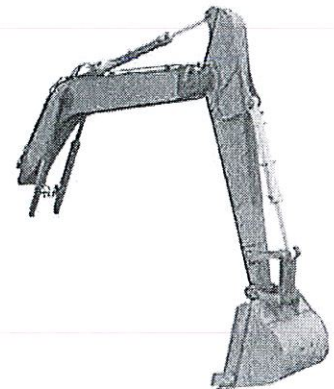
Working Mode	Application	Advantage
P	Power mode	<ul style="list-style-type: none"> •Maximum production/power •Fast cycle times
E	Economy mode	<ul style="list-style-type: none"> •Good cycle times •Better fuel economy
L	Lifting mode	<ul style="list-style-type: none"> •Increases hydraulic pressure
B	Breaker mode	<ul style="list-style-type: none"> •Optimum engine rpm, hydraulic flow
ATT/P	Attachment Power mode	<ul style="list-style-type: none"> •Optimum engine rpm, hydraulic flow, 2-way •Power mode
ATT/E	Attachment Economy mode	<ul style="list-style-type: none"> •Optimum engine rpm, hydraulic flow, 2-way •Economy mode

- P** Work priority P mode
- E** Fuel priority E mode
- L** L mode
- B** B mode
- ATT/P** Work priority ATT/P mode
- ATT/E** Fuel priority ATT/E mode



High Rigidity Work Equipment

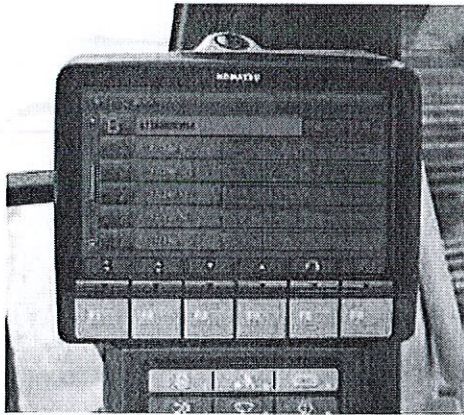
Booms and arms are constructed with thick plates of high tensile strength steel. In addition, these structures are designed with large cross sectional areas and large one piece castings in the boom foot, the boom tip, and the arm tip. The result is work equipment that exhibits long term durability and high resistance to bending and torsional stress. A standard HD boom design provides increased strength and reliability.



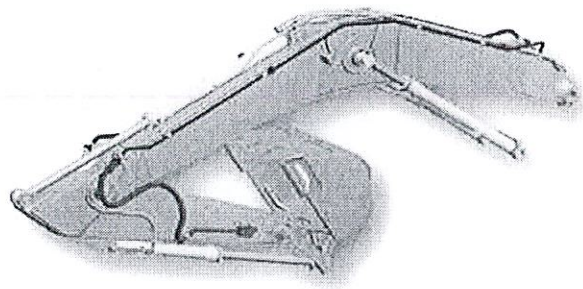
Komatsu Integrated Attachment Control (Optional)

Factory-integrated auxiliary hydraulic attachment control with programmable pressure and flow settings for up to 15 different tools. Settings can be easily changed from the machine monitor optimizing attachment control and performance. Proportional joysticks help expand versatility by giving the operator precise hydraulic attachment control.

*Not available on PC210LC-11

**+1 Attachment Piping(Optional)**

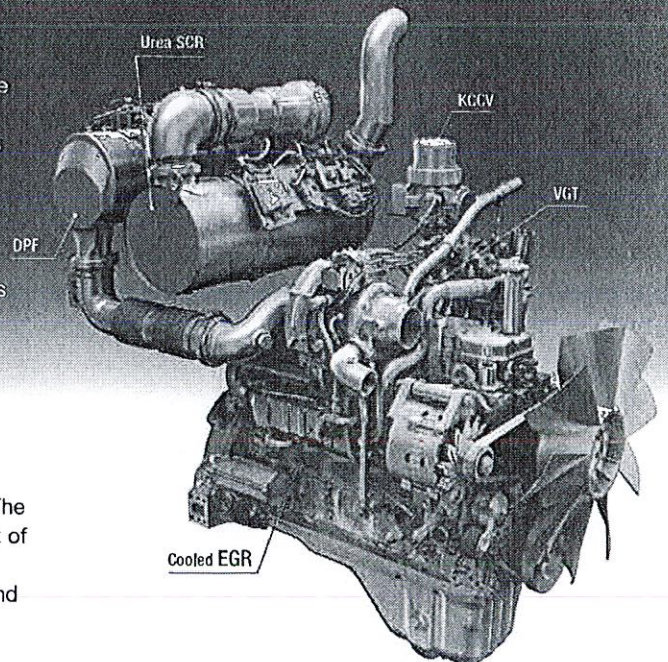
Factory-engineered auxiliary attachment circuit piping is designed and sized to work efficiently with the excavator main hydraulic system. Constructed of large diameter steel tubing with 4 bolt flange connections and robust mounting points, the auxiliary hydraulic piping is designed for durable, reliable use.

**KOMATSU NEW ENGINE TECHNOLOGIES****New Tier 4 Final Engine**

The Komatsu SAA6D107E-3 engine is EPA Tier 4 Final emissions-certified and provides exceptional performance while reducing fuel consumption. Based on Komatsu proprietary technologies developed over many years, this new diesel engine reduces nitrogen oxides (NOx) by more than 80% when compared to prior Komatsu Tier 4 levels. Through the in-house development and production of engines, electronics, and hydraulic components, Komatsu has achieved great advancements in technology, providing high levels of performance and efficiency in virtually all applications.

Technologies Applied to New Engine**Heavy-duty aftertreatment system**

This new system combines a Diesel Particulate Filter (DPF) and Selective Catalytic Reduction (SCR). The SCR NOx reduction system injects the correct amount of Diesel Exhaust Fluid (DEF) at the proper rate, thereby decomposing NOx into non-toxic water vapor (H₂O) and nitrogen gas (N₂).



WORKING ENVIRONMENT

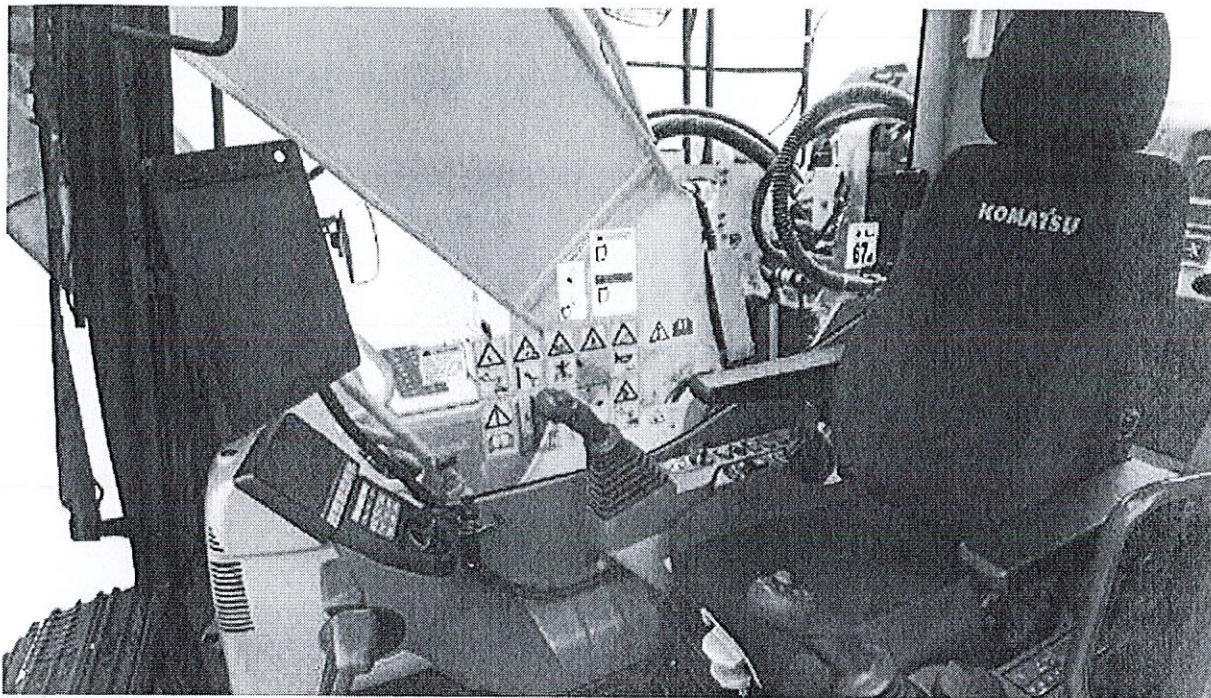


Photo may include optional equipment.

Comfortable Working Space

Wide spacious cab

The wide spacious cab includes a heated air suspension seat with reclining backrest. The seat height and position are easily adjusted using a pull-up lever. The armrest position is easily adjusted together with the console.

Arm rest with simple height adjustment function

A knob and plunger on the armrests allows easy height adjustment without the use of tools.



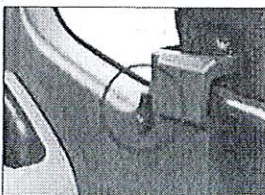
Low vibration with cab damper mounting

Automatic climate control

Pressurized cab

Auxiliary input jack

Connecting a regular audio device to the auxiliary jack allows the operator to hear the sound from the stereo speakers installed in the cab.



Standard Equipment

Sliding window glass (left side)



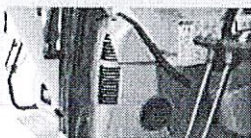
Remote intermittent wiper with windshield washer



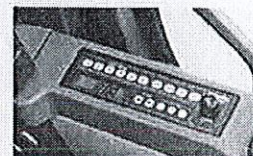
Opening & closing skylight



Defroster (conform to the ISO standard)



Radio



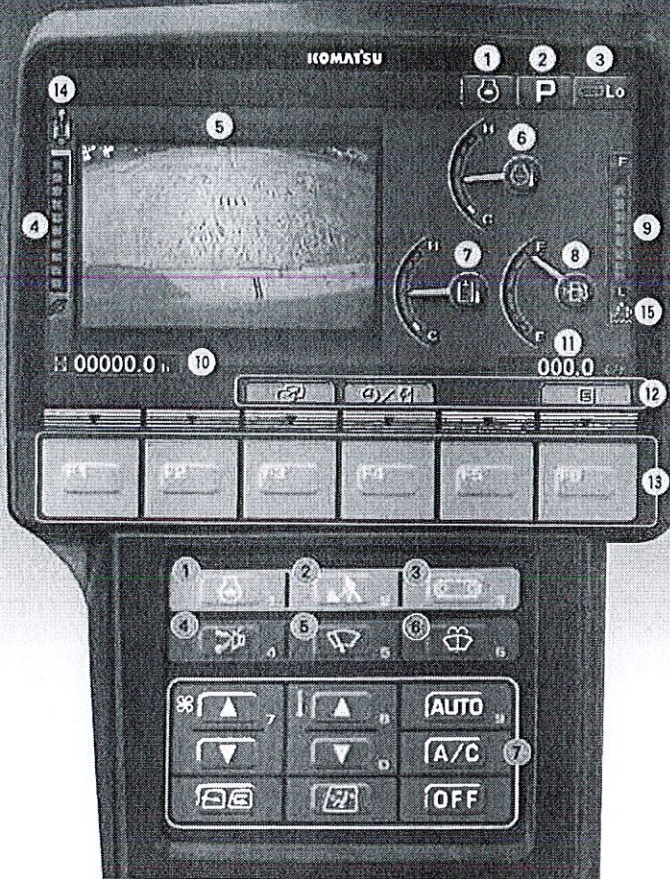
Magazine box & cup holder



One-touch storable front window lower glass



LARGE HIGH RESOLUTION LCD MONITOR



New Monitor Panel Interface Design

An updated large high resolution LCD color monitor enables accurate and smooth work. The interface has been redesigned to display key machine information in a new user friendly interface. A rear view camera and an DEF level gauge display have been added to the default main screen. The interface has a function that enables the main screen mode to be switched, thus enabling the optimum screen information for the particular work situation to be displayed.

Indicators

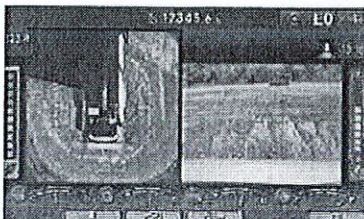
- | | |
|------------------------------------|-----------------------------|
| 1 Auto-decelerator | 8 Fuel gauge |
| 2 Working mode | 9 DEF level gauge |
| 3 Travel speed | 10 Service meter, clock |
| 4 Ecology gauge | 11 Fuel consumption gauge |
| 5 Camera display | 12 Guidance icon |
| 6 Engine coolant temperature gauge | 13 Function switches |
| 7 Hydraulic oil temperature gauge | 14 Camera direction display |
| | 15 DEF level caution lamp |

Basic operation switches

- | | |
|-------------------------|--------------------------|
| 1 Auto-decelerator | 8 Buzzer cancel |
| 2 Working mode selector | 9 Wiper |
| 3 Travel speed selector | 10 Window washer |
| | 11 Auto climate controls |

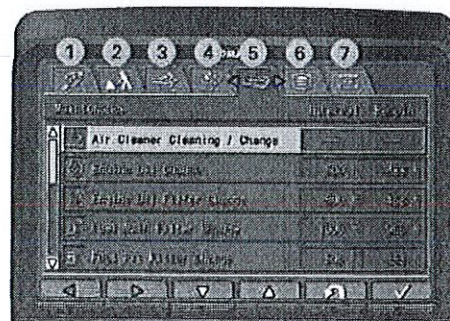
KomVision (Optional)

Images from 4 camera's are combined to display a "birds eye" view of the area around the machine for improved operator awareness. A second display with selectable individual camera views of the left, rear, and right sides is easily changed using the F4 button. A red line continuously shows where the counterweight will be during swinging and a camera icon indicates which camera is being displayed on individual camera display screen.



Visual user menu

Pressing the F6 key on the main screen displays the user menu screen. The menus are grouped for each function, and use easy-to-understand icons which enable the machine to be operated easily.



- 1) Energy saving guidance 2) Machine settings
3) Aftertreatment devices regeneration 4) SCR information
5) Maintenance 6) Monitor setting 7) Message check

WORKING ENVIRONMENT

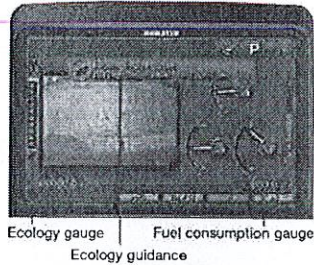
Support Efficiency Improvement

Ecology guidance

While the machine is operating, ecology guidance pops up on the monitor screen to notify the operator of the status of the machine in real time.

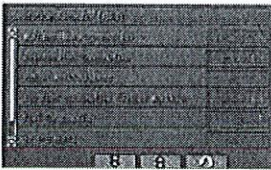
Ecology gauge & fuel consumption gauge

The monitor screen is provided with an ecology gauge and also a fuel consumption gauge which is displayed continuously. In addition, the operator can set any desired target value of fuel consumption (within the range of the green display), enabling the machine to be operated with better fuel economy.

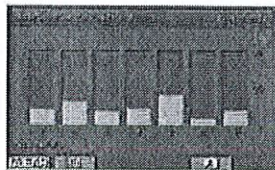


Operation record, fuel consumption history, and ecology guidance record

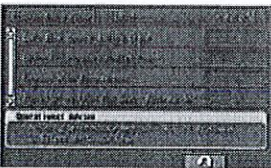
The ecology guidance menu enables the operator to check the operation record, fuel consumption history and ecology guidance record from the ecology guidance menu, with a single touch.



Operation record



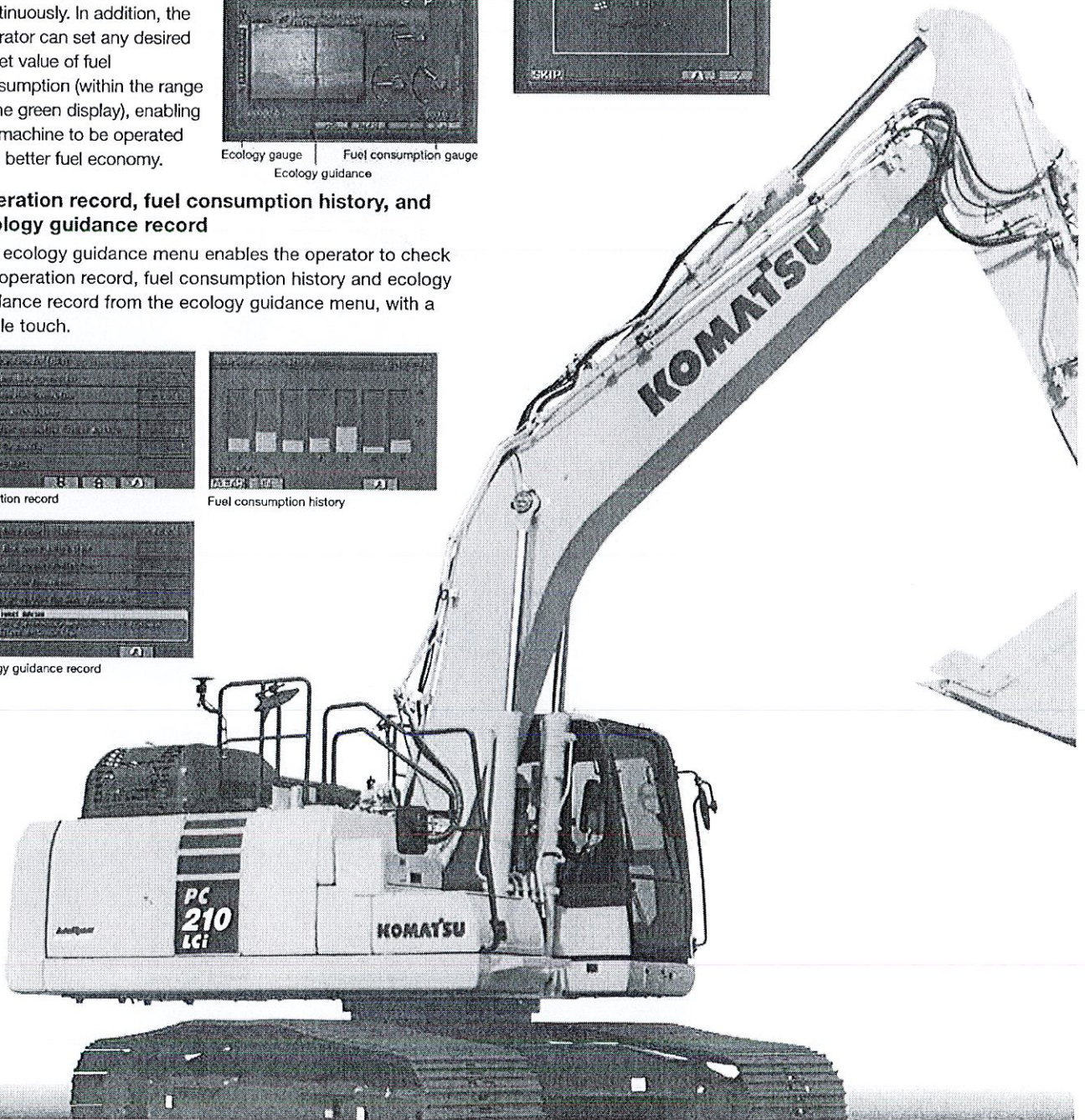
Fuel consumption history



Ecology guidance record

Operator Identification Function

An operator identification ID can be set up for each operator, and used to manage operation information of individual machines using KOMTRAX data. Data sent from KOMTRAX can be used to analyze operation status by operator as well as by machine.





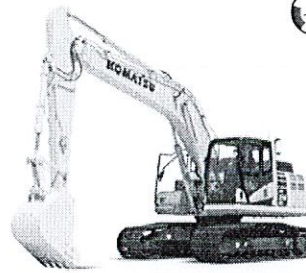
Komatsu Care Plus II

Extended maintenance and repair



PC210LC/LCi-11

Tier 4 final engine



Program information

Komatsu Care Plus II takes care of your equipment maintenance and repairs. You'll receive all the benefits of Komatsu Care Plus such as oil sampling, automatic maintenance scheduling, 50-point inspections, and the peace of mind that your equipment is being taken care of the way Komatsu intended. In addition, we've bundled Komatsu's Premier Extended Coverage to support your equipment's needs in case of unexpected repairs. Our comprehensive support plan protects your equipment with certified labor and includes diagnostic time.

Benefits

- Fixed maintenance and repair costs
- National service coverage
- Special financing
- Competitive pricing

Guaranteed

Komatsu Genuine Parts — To promote long-term performance and reliability, only genuine Komatsu parts are used for your equipment's maintenance.

Certified labor — So you're confident the job will get done right, work on your machine will be performed by Komatsu factory-trained service technicians. In addition to required work, they also perform a 50-point inspection to make sure your machine stays running at top performance.

Komatsu Oil and Wear Analysis (KOWA) — Enables us to detect abnormalities in your machine's condition, so we can further investigate and take the necessary actions to prevent catastrophic failures and minimize downtime.

Komtrax — Have a busy schedule? We'll monitor your machine through Komtrax telematics to automatically schedule your next maintenance and notify you when it's complete.

Contract agreement

Machine model:

Serial number:

Length:

60 MONTHS

Duration:

3000 HOURS

Planned maintenance interval	500	1,000	2,000	5,000	6,000	10,000
Reset monitor panel for service interval	•	•	•	•	•	•
Complete 50-point inspection	•	•	•	•	•	•
Perform KOWA sampling	•	•	•	•	•	•
Lubricate machine	•	•	•	•	•	•
Change engine oil	•	•	•	•	•	•
Replace engine oil filter	•	•	•	•	•	•
Replace main fuel filter	•	•	•	•	•	•
Replace engine air filter	•	•	•	•	•	•
Replace fuel pre-filter	•	•	•	•	•	•
Replace A/C fresh and recirc air filters	•	•	•	•	•	•
Check swing pinion grease	•	•	•	•	•	•
Lubricate swing circle	•	•	•	•	•	•
Clean radiator fins, cooler fins, aftercooler fins, fuel cooler fins, A/C condenser fins	•	•	•	•	•	•
Check oil level in swing machinery case	•	•	•	•	•	•
Check final drive case oil level	•	•	•	•	•	•
Replace hydraulic oil filter element		•	•	•	•	•
Change swing machinery oil		•	•	•	•	•
Check damper case oil		•	•	•	•	•
Replace hydraulic tank breather		•	•	•	•	•
Replace DEF tank breather element		•	•	•	•	•
Change final drive case oil			•		•	•
Clean hydraulic tank strainer			•		•	•
Replace KCCV filter element			•		•	•
Replace DEF filter			•		•	•
Change hydraulic tank oil				•		•
Change coolant					•	

Additional parts

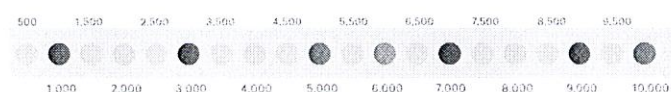
KDPF filters

As needed

Additional items may be included

Coolant replacement will be included in maintenance intervals starting at 6,000 hours.

Machine hours



Repair coverage

- Powertrain
- Hydraulics
- Engine
- Cabin
- Electrical
- Structural
- Certified technicians
- Diagnostics
- Travel

For complete list of repairs, refer to page two of the contract.



Komatsu Care Plus II

Extended maintenance and repair

Covered items	Plus II	Covered items	Plus II	Covered items	Plus II
Engine and related parts		Engine and related parts		Engine and related parts	
Engine oil related		Torque flow assembly/power module	●	Hydraulic accumulators	●
Cooler	●	Hydrostatic pumps and motors	●	Hydraulic oil coolers and cooling fans	●
Engine filter mount	●	Control and PPC valves	●	Swivels (rotary manifolds)	●
Remote make-up oil tanks	●	Oil coolers, tanks and reservoirs	●	Swing motor	●
Remote mounted oil filtration system	●	Oil filter mount	●	Hydraulic oil filter assembly	●
Valves	●	Electronic control module	●	Hydraulic tanks	●
Hose clamps and hoses*	●	Senders, solenoids and sensors	●	Senders, solenoids and sensors	●
Air intake and exhaust		Steering and transfer cases	●	Pipes, tubes, clamps, valves and hoses*	●
Air cleaner housing and after coolers	●	Damper	●	Suspension	
Inter coolers	●	Swing gear box	●	Electronic control module	●
Turbo charger**	●	Pipes, tubes, clamps and hoses*	●	Suspension cylinders and control valves	●
Intake and exhaust manifolds	●	Drive line		Suspension control arm assemblies	●
EGR valve and cooler	●	Axles and axle housings	●	Senders, solenoids and sensors	●
Mufflers**	●	Axle mounting and oscillation	●	Pipes, tubes, clamps, valves and hoses*	●
Senders, solenoids and sensors	●	Differentials and final drives	●	Electrical system	
Pipes, tubes, clamps, hoses	●	Wheel/rim	●	Gauges and instruments	●
Fuel system		Drive shaft/axle shaft and universal joints	●	Wiring harnesses	●
Fuel tank assembly and mounting	●	Valves	●	Switches	●
Fuel filter mounts	●	Pipes, tubes, clamps and hoses*	●	Relays and circuit breakers	●
Fuel transfer, auxiliary, lift and injection pumps	●	Steering		Start switch	●
Fuel coolers	●	Steering clutch	●	Fuse/circuit breaker panel and circuit board	●
Injectors**	●	Steering clutch and brake control valve	●	Monitor panels	●
Fuel manifolds/valves	●	Steering pump and emergency steering pump	●	Komtrax, VHMS and PLM (payload meter)	●
Senders, solenoids and sensors	●	Steering oil cooler	●	Electronic controllers	●
Pipes, tubes, clamps and hoses*	●	Steering valves	●	Air intake heaters and glow plugs	●
Engine mount		Steering box	●	Senders, solenoids and sensors	●
AC compressor/condenser	●	Steering linkage, column and console	●	Frames, structures and linkages	
Alternator** and starter	●	Tie rod	●	Boom/arm	●
Damper and vibration damper	●	Senders, solenoids and sensors	●	Bell crank and Z-bar on wheel loaders	●
Power take off	●	Pipes, tubes, clamps and hoses*	●	Carbody	●
Belt tensioner**	●	Braking system		Steel frame (front, rear, sub)/revolving frame	●
Flywheel and flywheel housing	●	Brake primary and secondary cylinders	●	Steel of outrigger on backhoe loaders	●
Heat shielding and framework	●	Brake pump and emergency brake pump	●	Motor grader circle	●
Transmission	●	Wet brake assemblies	●	Undercarriage	
Senders, solenoids and sensors	●	Brake oil cooler assemblies	●	Bogie assemblies	●
Electronic control modules	●	Brake oil cooler fan, pump and motor	●	Equalizer bar	●
Engine wiring harness	●	Brake caliper	●	HIC assemblies	●
Aftertreatment system		Accumulators	●	Pivot shaft assembly	●
KDPF assembly**	●	Tanks and reservoirs	●	Recoil springs	●
HC and DEF dosing nozzles**	●	Electronic control modules	●	Track adjusters	●
SCR assembly	●	Senders, solenoids and sensors	●	Track roller frame	●
KCCV assembly	●	Pipes, tubes, clamps, valves and hoses*	●	Hybrid systems	
Senders, solenoids and sensors	●	Cooling system		Capacitor/inverter	●
Pipes, tubes, clamps and hoses*	●	Radiator	●	Generator/motor	●
DEF mixing tube	●	Expansion tank	●	Hybrid controller	●
Other DEF system related		Thermostat**	●	Lubrication pump	●
Tank	●	Cooling fan, fan drive and shrouding	●	Radiator	●
Heater, pump and tank heater valve	●	Water pump**	●	Swing motor	●
Pump controller	●	Senders, solenoids and sensors	●	Water pump**	●
Senders, solenoids and sensors	●	Pipes, tubes, clamps, valves and hoses*	●	Wiring harness	●
Pipes, tubes, clamps and hoses*	●	Hydraulic systems		intelligent Machine Control system	
Power transmitting system		Non-propulsion hydraulic pumps and motors	●	GNSS and GPS antenna(s), GNSS receiver/controller, GNSS	●
Transmission		Hydraulic cylinders	●	Control box and ICT controller	●
Transmission and torque converters	●	Hydraulic valve and controls	●	IB monitor	●
		Electronic control modules	●	Sensors and encoders	●

Premier coverage type includes items in addition to the above list and is subject to the limitation listed in Section 2 of this agreement.

* Indicates coverage for 24 months/4,000 hours

** Indicates coverage through the first 5,000 hours



Komatsu Care Plus II

Extended maintenance and repair

Komatsu Care Plus II terms and conditions

Agreement coverage:

- a. Subject to the terms and conditions below, authorized Distributors will provide Komatsu genuine parts, labor and other services required to properly execute maintenance activities outlined in "Covered Items."
- b. The Machine will be eligible for this coverage starting at _____ SMR hours (MM/DD/YYYY) and expiring the earlier of the date when the Machine has accumulated _____ SMR hours or _____ MM/DD/YYYY. The phrase "SMR hours" represents the engine run time for the Machine and is measured using the hour meter or monitor panel installed in the Machine's operator cab.

Terms and conditions:

- a. It is the responsibility of the nearest servicing branch within distributors territory to the location of set machine to perform outlined maintenance service in accordance to the machine model specific reimbursement policy letter for appropriate service maintenance interval. Distributor should notify customer of planned service date minimum of 72 hours in advance via MyKomatsu.com, e-mail or other communication platform.
- b. It is the responsibility of the customer to confirm scheduled date and relinquish set machine for maintenance and/or repair upon arrival of distributor personnel. If the customer has a conflict on scheduled date, he/she must notify servicing distributor to perform services on a different date so long as it is done in a timely manner and follows the nature of these agreement.
- c. Relinquish machine to servicing distributor in a timely manner after failure has occurred to execute appropriate repairs. Relinquish machine for scheduled maintenance at designated interval hours for maintenance by servicing distributor. Failure to do so can result in additional charges for technician labor time or travel for a second trip to machine. Failure to repair machine promptly after machine failure was identified, can result in original or consequential failures not being covered.
- d. Customer is to have machine available for distributor personnel in reasonable cleanliness conditions as to allow the technician to properly execute tasks. The machine is to be set in a safe working environment that allows access to perform services.
- e. Customer should receive results of oil analysis, 50-point inspection, and MyKomatsu.com service completion after the execution of every maintenance service.
- f. All service records are maintained by the Komatsu and made available for distribution to share with designated customers via the My Komatsu or Komatsu Care Report.

Maintenance

Exclusions and limitations:

- a. Machine parts that are not procured from Komatsu or an authorized distributor.
- b. Machine attachments, optional extras and other work equipment such as buckets, dump bodies, blades, and associated wear packages such as teeth, cutting edges, and liners.
- c. Operating expenses on Covered Items required to keep the Machine in good operating condition and repair, including by way of example but not limitation:
 - i. System adjustments.
 - ii. Cleaning and calibration/re-calibration of intelligent Machine Control components.
 - iii. Hardware, Software or Firmware updates.
 - iv. Cosmetic damage that does not impact product functionality.
 - v. Application based maintenance that requires a higher frequency of filter/oil/lubricant replacement than what is listed in "Covered Items."
- d. Service coverage is provided nationally based on country of machine sale. Machines migrating outside of selling country are not eligible to be serviced by any other distributor under this program.
- e. All maintenance services must be completed within +/- 200 hours of the target service interval to qualify for Komatsu reimbursement. Failure to complete set maintenance service according to these conditions will result as a loss of set service interval, following service intervals will resume as scheduled afterwards. Example: 500-hour maintenance service must be completed within 300-700 SMR as reported by Komtrax. However, in order to qualify for program benefits such as, but not limited to **Major Component Assurance, Komatsu Certified Equipment**, all maintenance services must be completed within +/- 100 hours of set interval.

Repairs

Exclusions and limitations:

- a. Repairs or replacements of:
 - i. Hose and tube flange O-rings and gaskets.
 - ii. Hoses after the Machine has been in service for 24 months or 4,000 SMR hours.
 - iii. Hydraulic cylinder packing replacements after the Machine has been in service for 5,000 SMR hours.
 - iv. Starters, alternators, thermostats, belt tensioners, injectors, turbochargers, KDPF, HC and DEF dosing nozzles, and water pumps after the Machine has been in service for 5,000 SMR hours.
 - v. Covered Items that are worn because of use. Examples of wear resulting from use would include, by way of example but not limitation, oil consumption and high blow by pressure on engines, hydraulic cylinder seal leaks, wear of clutch or brake packs, pins or bushings, etc.
 - vi. Machine parts that are not procured from Komatsu or an authorized distributor.
 - vii. Machine attachments, optional extras and other work equipment such as buckets, dump bodies, blades, and associated wear packages such as teeth, cutting edges, and liners.
 - viii. Any Machine part or component not specifically included within the scope of the Coverage Type, unless otherwise noted.
- b. Operating expenses on Covered Items required to keep the Machine in good operating condition and repair, including by way of example but not limitation:
 - i. System adjustments.
 - ii. Cleaning and calibration/recalibration of intelligent Machine Control components (unless recalibration is required due to the repair or replacement of a covered intelligent Machine Control component).
 - iii. Hardware, Software or Firmware updates.
 - iv. Cosmetic damage that does not impact product functionality.



Komatsu Care Plus II

Extended maintenance and repair

- v. As needed maintenance items such as repairs or replacements of mounting hardware, including bolts, nuts, pins, bushings, and bearings, paint, windshield wiper blades, seat belt assemblies, air cleaners, belts, light bulbs, batteries, cables, fuses, tires, track link assemblies, track shoes, idlers, rollers, sprockets, rock guards and deflectors.
- vi. Cost of carrying out scheduled structural inspections that are required to maintain coverage for certain Covered Items for Frame and Boom and Arm Coverage Types. If you wish to perform these inspections yourself, please obtain a copy of the Distributor Inspection Worksheet from your local Komatsu Distributor.
- c. Machine or Covered Item failures resulting from:
 - i. Operating the Machine outside the guidelines specified in O&M Manual.
 - ii. Operating the Machine outside of the parameters specified in the Machine specific Payload Policy or other notices or letters from Distributor or Komatsu.
 - iii. Noncompliance with the maintenance schedule and procedure outlined in the Machine's O&M manual.
 - iv. Fuel, lubricant or coolant contamination from any source.
 - v. Continuing to operate the machine when KOWA reports or the Machine monitor panel, Komtrax Plus, Komtrax, PLM or any other systems ("Machine Monitoring Systems") show critical errors, indicate that components are compromised by failures or are performing below specifications, or when the Distributor has requested that components be repaired or removed from the Machine because of an impending failure, manufacturer authorized field campaign or other good cause.
 - vi. Improper Machine storage procedures.
 - vii. Incomplete or faulty repair procedures on previous repairs completed by any person other than Distributor.
 - viii. Improper initialization procedures during Machine commissioning if the commissioning process was carried out by any person other than Distributor.
 - ix. Machine attachments options, accessories, modifications, or work equipment not authorized in O&M Manual and other materials published by Komatsu for distributors and customers or otherwise approved in writing and signed by an engineering officer of Komatsu.
 - x. Work site hazards or falling objects.
 - xi. Fire, accidents, vandalism, theft, acts of terrorism or war, acts of nature or other causes beyond the direct control of Distributor.
 - xii. Misuse, misapplication, negligence or other misconduct on the part of Customer or any other person.
- d. Customer may be responsible for paying for the following specific expenses related to repairs on Covered Items:
 - i. Transporting the Machine to a Distributor facility for completion of a covered repair and transporting the Machine back to the Machine's work location after completion of the covered repair.
 - ii. Overtime labor charges incurred at the request of Customer to complete repairs outside of the Distributor's normal working hours.
 - iii. Additional services performed at the Customer's request outside the scope of the Coverage Time, including, by way of example but not limitation, replacing parts and components outside such scope during performing a repair on a Covered Item.

Customer responsibilities: The obligations of Distributor under this Agreement are subject to and conditioned by the Customer's timely performance of the following, at their own expense:

- a. Operate, maintain, store, repair and otherwise use the Machine per the guidelines specified in the O&M Manual, Machine specific Payload Policy and all other notices or letters from Distributor or Komatsu concerning such topics.
- b. Maintain the Machine Monitoring Systems in good operating condition and repair.
- c. Notify Distributor promptly in the event of failure of a Covered Item. If the Machine is located outside of the Distributor territory at the time of a Covered Item failure, Customer can contact the local Komatsu distributor to carry out the covered repair.

Distributor responsibilities:

- a. Distributor will exercise commercially reasonable efforts to respond promptly to any Customer requests and questions related to this Agreement.
- b. Distributor will carry out covered maintenance services during normal Distributor working hours.
- c. All program coverages follow the spirit and guidelines outlines in Komatsu Service Policy and Procedure Manual.

Agreement transferability:

This Agreement is specific to the Machine listed in Section 1. Customer may not assign its right under this Agreement. This maintenance Agreement is transferrable with machine in the case of change in machine ownership. The unit under changed ownership is eligible to all the services outlined under original contract with no additional costs. Length and duration of Komatsu Care Plus II will follow as originally listed.

Agreement limitation of liability:

Except as expressly provided in this Agreement and in any written warranty certificate delivered by Distributor to Customer in connection with a purchase, Distributor does not make any representations or warranties, expressed, implied, arising by operation of law or otherwise, as to merchantability, fitness for a particular purpose, quality, design, condition, suitability, performance or any other matter or characteristic with respect to the Machine and any related attachments, options, accessories, modifications or work equipment. For any failure within the scope of the Coverage Type, Customer agrees that its sole and exclusive remedy will be for Distributor to perform the required repair. Distributor will not be liable under any circumstance to Customer for, and Customer waives and releases Distributor from all claims and liabilities for, any general, special, incidental, punitive, consequential, exemplary or any other damages of whatever kind or nature suffered or incurred by consignee, directly or indirectly, actual or alleged, whether arising in tort or in contract or otherwise, related to or arising out of this Agreement and the Machines and any related attachments, options, accessories, modifications or work equipment.

Agreed to by Customer and Distributor as of the Effective Date.

Distributor:

By _____

Name _____

Title _____

Customer:

By _____

Name _____

Title _____



Company ID Number:571783

Client Company ID Number:1453697

Information Required for the E-Verify Program	
Information relating to your Company:	
Company Name	Tractor & Equipment Co Inc
Company Facility Address	5336 Messer Airport Highway Birmingham, AL 35212
Company Alternate Address	PO Box 12326 Birmingham, AL 35202
County or Parish	Jefferson
Employer Identification Number	63-0211767
North American Industry Classification Systems Code	Merchant Wholesalers, Durable Goods (423)
Parent Company	
Number of Employees	500 to 999
Number of Sites Verified for	22