

**BID SUBMITTAL FORM**  
**Alabama County Joint Bid Program**  
**BID ITEM – 100 HP HYDROSTATIC BULLDOZER – OPTION C**

Company Name: Warrior Tractor & Equipment Company, Inc.

Address: 6801 McFarland Blvd, Northport, AL 35476

Bid Submitted by: David Schafer  
(Name of company representative)

Title: Sales Manager E-mail address: dschafer@warriortractor.com

Phone: 205-339-0300 Fax: 205-333-0101

By submitting this bid, we agree:

Initials

The equipment model number identified below meets the bid specs for this bid item

DS

That the bid price will be honored for all counties for the period from **January 1, 2026** to **June 30, 2026**.

DS

The equipment will be delivered at the bid price to all counties participating in the joint bid program

DS

The company representative listed above will be the contact person for purchasing this bid item under the joint bid program

DS

The bid is accompanied by a current catalog or model specification document for the model number identified below

DS

The bid is accompanied by a copy of the manufacturer's standard warranty as required in the bid specifications

DS

The bid includes the E-Verify documentation required by Alabama law

DS

We comply with, and if awarded the contract, we will comply with, the requirements of Section 41-16-50 and Sections 41-16-160 to -166, Code of Alabama 1975.

DS

If awarded the bid, a performance bond will be provided upon request

DS

The bid documents include the **Manufacturer's Suggested Retail Price Sheet (MSRP) for the Standard Machine**

DS

## 100 HP HYDROSTATIC BULLDOZER – OPTION C

Total Bid Price for Standard Machine: \$ 196,437.00  
(Total Bid Price for Standard Machine Includes Freight Preparation, Delivery and Standard Warranty Costs)\*

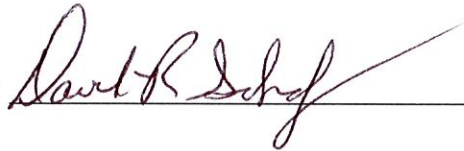
Freight Preparation and Delivery: \$ 6,750.00  
(Included in Standard Machine Bid Price)

Manufacturer's Suggested Retail Price for Standard Machine: \$ 243,931.00

Equipment Model #: John Deere 650 P-Tier Bachoe

Description: 100 HP Hydrostatic Dozer

Signature of company representative submitting bid:



Title: Sales Manager

\* **NOTE:** Award will be made based on the total cost of the **Standard Machine**. The total cost of the standard machine is to include freight preparation, delivery and standard warranty cost. Freight preparation and delivery will be excluded from the total bid price of the standard machine in determining the percentage discount for any available options.

## BID SUBMITTAL FORM: OPTION COST SHEET 100 HP HYDROSTATIC BULLDOZER – OPTION C

By submitting this bid, we agree:

To offer any available options at the percent difference between the Manufacturer's Suggested Retail Price Sheet and the actual bid price on the Standard Machine\*

100%

The bid documents include the Manufacturer's Suggested Retail Price Sheet (MSRP) with **any available Options** for the Standard Machine

100%

Equipment Model #: John Deere 650 P-Tier Bachoe

Description: 100 HP Heavy Duty Hydrostatic Bulldozer

Signature of company representative submitting bid: David L. Schaf

Title: Sales Manager

**\*Note:** The percent difference between the **Manufacturer's Suggested Retail Price Sheet (MSRP)** for the standard machine as specified by these **Bid Specifications** and the actual price bid by the vendor will be calculated to determine the percentage discount to be applied to any available options. The bid price of the freight preparation and delivery cost shall be excluded in determining the percentage discount to be applied to available options. Any individual county may choose to add any available option to the standard machine at the percentage discount at the time of purchase.



# **BID SPECIFICATIONS FOR 100 HP HYDROSTATIC BULLDOZER – OPTION C**

## **GENERAL**

These specifications shall be construed as the minimum acceptable standards for a 100 hp hydrostatic low ground pressure bulldozer. Should the manufacturer's current published data or specifications exceed these standards, the manufacturer's standards shall be considered minimum and shall be furnished. All integral parts not specifically mentioned in the scope of these specifications that are necessary to provide a complete working unit shall be furnished. Additionally, the machine offered for bid shall include all standard manufacturer's equipment. The bulldozers must be a new current production model and shall meet all EPA and other applicable standards at the time of manufacture.

The use of specific names and numbers in the specifications is not intended to restrict the bidder or any seller or manufacturer, but is intended solely for the purpose of indicating the type, size and quality of equipment considered best adapted to the uses of counties participating in this joint bid.

## **BID SUBMITTAL FORM**

Each bidder must submit his or her bid on the Bid Submittal Form included in the invitation to bid package. All written warranties to be submitted shall be attached to the Bid Submittal Form.

## **BID PRICE**

The price bid shall include all destination charges, delivery charges, title fees, rebates, and all other applicable costs and refunds.

## **MANUALS**

Each unit shall be provided with one (1) copy of the operator's manual and one (1) copy of the current parts manual. Units will not be accepted for delivery until the manuals as outlined above are received by the purchaser.

## **REPLACEMENT PARTS AVAILABILITY**

Parts must be available for 5 years or 7,500 hours of use for the piece of equipment bid. If replacement parts are not delivered within three (3) working days of an order being placed, the bidder will deliver an equivalent machine for the county to use at no cost to the county until such time as the parts are delivered to the county so it can affect repairs to its machine.

## **WARRANTY**

Bidders shall submit a copy of the manufacturer's standard warranty. Warranty shall include service response time of maximum of 36 hours within notification by county.

Yes X No       
Page#           
or  
Attachment X



**ENGINE**

Shall be a turbocharged diesel engine with a displacement of not less than **276 cubic inches**, capable of developing a minimum of **104 net** flywheel horsepower (SAE J1349).

Yes ☒ No ☐  
Page # 6

**Engine shall be manufactured by the equipment manufacturer.**

Yes ☒ No ☐  
Page # 6

**WEIGHT**

Operating weight with blade, operator, full fuel tank, and ROPS canopy shall not be less than **22,000 lbs.**

Yes ☒ No ☐  
Page # 7

**ELECTRICAL SYSTEM**

Shall be equipped with a minimum **100-amp** alternator.

Yes ☒ No ☐  
Page # 6

**TRANSMISSION**

Shall be equipped with a hydrostatic type transmission.

Yes ☒ No ☐  
Page # 6

**STEERING**

All steering functions must be able to be performed using one hand only.

Yes ☒ No ☐  
Page # 6

**UNDERCARRIAGE**

The tractor shall be equipped with sealed and lubricated tracks. Minimum shoe width shall be **28 inches**. Track sag shall be hydraulically adjusted.

Yes ☒ No ☐  
Page # 7

**BLADE**

The machine shall be equipped with a six-way (pat) blade with a minimum capacity of **2.5 cubic yards**.

Yes ☒ No ☐  
Page # 8

**VANDALISM PROTECTION**

Machine shall be equipped with all standard and optional factory vandalism protection available for the machine bid.

Yes ☒ No ☐  
Page # 10

**Hydraulics**

Minimum pump flow shall be **19 gpm** and minimum system pressure of **3000 psi**.

Yes ☒ No ☐  
Page # 6

### **SAFETY EQUIPMENT**

Gauges and indicators shall be provided to monitor critical (fuel level, coolant temperature, powertrain oil temperature, and hydraulic oil temperature) operational systems of the machine and alert the operator when potential problems occur.

Yes X No       
Page # 10-11

Rear view mirror; backup alarm.

Yes X No       
Page # 11

Heavy duty hinged radiator guard

Yes X No       
Page # 10

Crankcase guard

Yes X No       
Page # 10

Track center guiding guard

Yes X No       
Page # 11

Pre-cleaner guard      \*\* Under Hood \*\*

Yes      No X  
Page #     

Front tow hooks

Yes X No       
Page # 10

Heavy duty rear drawbar

Yes X No       
Page # 10

Fire extinguisher

Yes X No       
Page # ATTACH

Water separator

Yes X No       
Page # 10

650 P-Tier Utility Dozer



04-Nov-2025

| Code  | Description              | QTY | List Price         |
|-------|--------------------------|-----|--------------------|
| 55C0T | 650 P-Tier Utility Dozer | 1   | US\$237,514.00 USD |

650 P-Tier Utility Dozer Standard Equipment

ENGINE:

John Deere PowerTech PWS 4.5L meets FT4 / Stage IV emissions  
104 SAE Net hp (78kW)  
Wet Sleeve Cylinder Liners  
Isolation-Mounted  
Electronic Fuel Injection  
Electronic Control with Automatic Engine Protection  
Vertical Spin-on Engine Oil Filter  
Vertical Spin-on Dual Stage Fuel Filter  
Oil-to-Water Engine Oil Cooler  
Dual Safety Element Dry-Type Air Cleaner, Evacuator Valve  
Eco Mode  
500 hr. Engine Oil Change Interval

COOLING SYSTEM:

Enclosed Safety Fan Guard (Conforms to SAE J1308)  
Cool-On-Demand Variable Speed Engine Fan  
Engine Coolant -34 Degree F (-37 Degree C)  
Coolant Recovery Tank  
8.5-Fin/in. Engine Coolant Radiator  
9.5-Fin/in. Hydrostatic/Hydraulic Oil-to-Air Cooler  
6.4-Fin/in. Air-to-Air Charge Air Cooler  
Tilt Out Heavy-Duty Perforated Front Grille and Radiator with Hose Protection

ELECTRICAL:

24 Volt System  
110 Amp Alternator for canopy units / 145 Amp Alternator for cab units  
(2) Batteries with 190 Minute Reserve Capacity, 950 CCA  
Master Electric Disconnect Switch  
Bypass Start Safety Cover on Starter  
Blade-Type Fuses  
Positive Terminal Battery Covers  
Pre-wired for Work Lights, Underseat Heater  
(2) Front Cab Mounted and (2) Rear Cab Mounted Work Lights

HYDRAULICS:

18 GPM (68 L/Min) Fixed Displacement Hydraulic Gear Pump  
Three-Function Electro-Hydraulic (EH) Controls with Proportional Angle Function  
Hydraulic/Hydrostatic Oil Reservoir with Sight Gauge  
Vertical Spin-on Hydraulic Oil Filter

POWER TRAIN:

Dual Path Hydrostatic Transmission  
Variable Displacement Piston Pump and Motor Combination



Single Lever-Steering, Direction / Speed Control with Counter Rotation and Horn  
Selectable reverse speed ratios 100%, 115%, 130% or independent of forward ground speed  
AutoTracking Steering Control  
18.6 Gallon (70.4 Liter) Reservoir with Sight Gauge  
4000 hr. Oil Change Interval  
Vertical Spin-on Transmission Filter  
Combined Decelerator/Brake Pedal  
Automatic Power Management (w/ Manual Override) for Matching Ground Speed  
Infinite Ground Speed Selection  
Automatic Straight Ahead Tracking  
Dynamic Braking (Anti-Free Wheel)  
Transmission Neutral Lock with Safety Start Switch  
Automatic Spring Applied, Hydraulically Released Parking Brake  
Oil to Air Transmission Oil Cooler  
Triple Reduction Final Drives with Wet Multi-Disk Brakes  
Primary and Secondary Service Brakes (Conforms to ISO10265)  
Transmission Diagnostic Ports  
Selectable Decelerator Mode

#### UNDERCARRIAGE:

61 In. (1549 mm) XLT Track Gauge w/ 7 Bottom Rollers  
Maximum Life Undercarriage with Moderate Single Grouser Track Shoes  
Sealed Track Chain  
Single Flange Rollers  
Front and Rear Track Guides  
Solid Sprocket with Bolt-on Sprocket Guards  
Track Adjuster Relief Valve

#### OPERATOR STATION:

JDLink Telematics Service  
Modular Design ROPS/FOPS Canopy, Isolation Mounted (Conforms to SAE J1040)  
Left and Right Front Access  
Front and door wipers and washers (cab)  
Slip-Resistant Steps and Ergonomically Located Handholds (Conforms to SAE J185)  
Large Color Display  
Interior Sound Treatment  
Air Suspension Seat  
Operator Presence System  
Thigh Support  
Lumbar  
Backrest Tilt  
Height, Weight and Fore-Aft  
Side Console Leg Cushions  
Adjustable Armrests  
3 in. (76 mm) Orange Seat Belt with Retractors (Conforms to SAE J386 - ISO 6683)  
Lunch Box Storage  
Glove (Storage) Box  
Cupholders (x2)  
Built-in Operator's Manual Storage Compartment and Manual  
12 Volt Power Port  
Headliner and Floormat  
Horn, Electric(Conforms to SAE J994, J1446)

#### GAUGES:

Engine Coolant Temperature  
Transmission Oil Temperature  
Hydraulic Oil Temperature  
Engine Oil Pressure  
Fuel Level  
DEF Level

#### OVERALL VEHICLE:

One Piece Unitized Mainframe  
 Front Tow Loop  
 Reinforced Engine and Mid-frame Bottom Guards  
 Integral Transmission Guard  
 Perforated Engine Side Shields  
 Heavy-Duty Perforated Front Grille with Hose Protection  
 Environmental Drains  
 53 Gallon (202 Liter) Fuel Tank with Wide Mouth Fuel Fill Cap and Shut off Valve  
 Reverse Warning Alarm with Guarding (Conforms to SAE J994, J1446)  
 Vandal Protection Locking for:  
 Engine Access Door  
 Rear Service Doors  
 Fuel tank  
 Instrument Panel  
 Hydrostatic/Hydraulic Reservoir - Need wrench to access

### Basic Factory Options - Required

#### Destination Code

|      |               |               |
|------|---------------|---------------|
| 0202 | United States | No Added Cost |
|------|---------------|---------------|

#### Operator's Manual and Language

|      |         |               |
|------|---------|---------------|
| 0259 | English | No Added Cost |
|------|---------|---------------|

English language for operator's manual and electronic content

|      |        |               |
|------|--------|---------------|
| 0263 | French | No Added Cost |
|------|--------|---------------|

French language for operator's manual and electronic content

|      |         |               |
|------|---------|---------------|
| 0287 | Spanish | No Added Cost |
|------|---------|---------------|

Spanish language for operator's manual and electronic content

#### Labels

|      |                        |               |
|------|------------------------|---------------|
| 0351 | Translated Text Labels | No Added Cost |
|------|------------------------|---------------|

Vehicle labels translated to selected language

|      |                |               |
|------|----------------|---------------|
| 0352 | No Text Lables | No Added Cost |
|------|----------------|---------------|

Vehicle labels will be no text

---

Engine

|      |  |               |
|------|--|---------------|
| 4076 | John Deere 4.5L - FT4/SV   | No Added Cost |
|      | John Deere PowerTech PWS 4.5L (274 cu. in.) 4 Cyl meets FT4/EU Stage V Emissions |               |

---

Engine Fan Drive

|      |                              |               |
|------|------------------------------|---------------|
| 4101 | Standard Hydraulic Fan Drive | No Added Cost |
|------|------------------------------|---------------|

---

|      |                                   |              |
|------|-----------------------------------|--------------|
| 4102 | Automatic Reversing Hydraulic Fan | US\$1,555.00 |
|------|-----------------------------------|--------------|

---

|      |                  |               |
|------|------------------|---------------|
| 4103 | Direct Fan Drive | No Added Cost |
|------|------------------|---------------|

---

Dozer Configuration

|      |   |               |
|------|---|---------------|
| 0401 | XLT PAT (Extra Long Track - Power Angle Tilt)   | No Added Cost |
|      | 1549 mm (61 In.) track gauge - 7 bottom rollers |               |

---

|      |  |              |
|------|--|--------------|
| 0410 | LGP PAT (Low Ground Pressure - Power Angle Tilt) | US\$5,013.00 |
|      | 1753 mm (69 In.) track gauge - 7 bottom rollers  |              |

---

Track Shoes And Chain

|      |   |                |
|------|---|----------------|
| 5602 | 18 In. (457 mm) Moderate Service Shoes - Heavy Duty Undercarriage | (US\$8,215.00) |
|------|---|----------------|

---

|      |   |                |
|------|---|----------------|
| 5603 | 20 In (508 mm) Moderate Service Shoes with Clipped Corners - Heavy Duty Undercarriage | (US\$7,999.00) |
|------|---|----------------|



|      |  |                |
|------|--|----------------|
| 5605 | 24 In (610 mm) Moderate Service Shoes - Heavy Duty Undercarriage                         | (US\$7,251.00) |
| 5608 | 28 In (710 mm) Moderate Service Shoes with Clipped Corners - Heavy Duty Undercarriage    | (US\$6,798.00) |
| 5702 | 18 In (457 mm) Moderate Service Shoes - Extended Life Undercarriage                      | (US\$2,368.00) |
| 5703 | 20 In (508 mm) Moderate Service Shoes with Clipped Corners - Extended Life Undercarriage | (US\$1,694.00) |
| 5705 | 24 In (610 mm) Moderate Service Shoes - Extended Life Undercarriage                      | (US\$1,019.00) |
| 5708 | 28 In (710 mm) Moderate Service Shoes with Clipped Corners - Extended Life Undercarriage | (US\$344.00)   |
| 5802 | 18 In (450 mm) Moderate Service Shoes - Maximum Life Undercarriage                       | No Added Cost  |
| 5803 | 20 In (508 mm) Moderate Service Shoes with Clipped Corners - Maximum Life Undercarriage  | US\$588.00     |
| 5805 | 24 In (610 mm) Moderate Service Shoes - Maximum Life Undercarriage                       | US\$1,229.00   |

|              |  |               |
|--------------|--|---------------|
| 5806         | 28 In (710 mm) Moderate Service Shoes with Clipped Corners -<br>Maximum Life Undercarriage   | US\$1,834.00  |
| <hr/>        |  |               |
| Track Guides |  |               |
| 5901         | Center and Rear Track Guides   | US\$919.00    |
|              | Recommended for slope and rocky conditions   |               |
| <hr/>        |  |               |
| 5902         | Rear Track Guides  | No Added Cost |
| <hr/>        |  |               |
| 5903         | Full-Length Rock Guards  | US\$1,853.00  |
|              | Includes Rear & Center Track Guides<br>Recommended for slope and rocky conditions and not ideal for use in mud with extreme cold conditions. |               |
| <hr/>        |  |               |
| Dozer Blade  |  |               |
| 7615         | PAT Blade - 115 In (2921mm) w/ HD C-Frame - Blade NOT<br>Installed   | No Added Cost |
|              | Blade shipped with machine but not installed.<br>115 In X 37.6 In (2.92 m X .96 m)   |               |
|              | Includes: lift, tilt, and angle cylinders with hoses, Cordura coverings, and tilt cylinder cable   |               |
| <hr/>        |  |               |
| 7616         | PAT Blade - 124 In (3150mm) w/ HD C-Frame - Blade NOT<br>Installed   | US\$516.00    |
|              | Requires LGP track frame<br>124 In X 35.2 In (3.15 m X .894 m)   |               |
|              | Blade shipped with machine but not installed.  |               |
|              | Includes: lift, tilt, and angle cylinders with hoses, Cordura coverings, and tilt cylinder cable   |               |
| <hr/>        |  |               |
| 7659         | PAT Blade - 128 In (3251mm) - Blade NOT Installed  | US\$1,954.00  |

Requires LGP track frame  
128 In X 37.6 In (3.25 m X .96 m)

Blade shipped with machine but not installed

Includes: lift, tilt, and angle cylinders with hoses, Cordura coverings, and tilt cylinder cable

---

|      |   |              |
|------|---|--------------|
| 7660 | PAT Blade - 105 In (2667mm) w/ HD C-Frame - Blade Factory Installed | (US\$389.00) |
|------|---|--------------|

Requires XLT track frame  
105 In X 42 in (2.67 m X 1.06 m)

Factory Installed

Includes: lift, tilt, and angle cylinders with hoses, Cordura coverings, and tilt cylinder cable

---

|      |                               |                |
|------|-------------------------------|----------------|
| 7611 | Less Blade (Includes C-Frame) | (US\$5,631.00) |
|------|-------------------------------|----------------|

Does not include attaching pins and hardware.

Includes: lift, tilt, and angle cylinders with hoses, Cordura coverings, and tilt cylinder cable.

Refer to Installation instructions T177581 to attach non-Deere attachments.

---

#### Trim Packages

|      |                       |               |
|------|-----------------------|---------------|
| 0601 | Canopy - Level 1 Trim | No Added Cost |
|------|-----------------------|---------------|

Includes:  
Black Exhaust  
Halogen Lights

---

|      |                       |            |
|------|-----------------------|------------|
| 0602 | Canopy - Level 2 Trim | US\$497.00 |
|------|-----------------------|------------|

Includes:  
Chrome Exhaust  
LED Lights

---

|      |                    |               |
|------|--------------------|---------------|
| 0603 | Cab - Level 1 Trim | US\$15,783.00 |
|------|--------------------|---------------|

Includes:  
Black Exhaust  
Halogen Lights  
AM/FM Radio  
Standard Highback Seat (Fabric, Air Suspension)



|                    |   |               |
|--------------------|---|---------------|
| 0604               | Cab - Level 2 Trim  | US\$18,662.00 |
|                    | Includes:<br>Chrome Exhaust<br>LED Lights<br>Premium Radio (AM/FM, Bluetooth, Aux, Microphone)<br>Premium Highback Seat (Leather, Heated & Ventilated, Air Suspension)<br>Automatic Temperature Control (ATC) – HVAC system |               |
| Hydraulic Controls |   |               |
| 7026               | 3 Function Manual Hydraulic Controls For Power-Angle-Tilt (PAT)   | No Added Cost |
|                    | Manual Controls. NOT future upgradeable to 2D Slope Control or SmartGrade™ in the factory by field kit.<br>Does NOT include EZ Grade.   |               |
| 7031               | 4 Function Manual Hydraulic Controls For Power-Angle-Tilt (PAT)   | US\$989.00    |
|                    | Manual Controls, includes auxiliary plumbing for ripper. NOT future upgradeable to 2D Slope Control or SmartGrade™ in the factory or by field kit.<br>Does NOT include EZ Grade.  |               |
| 7028               | 3 Function Electro-Hydraulics (EH) For Power-Angle-Tilt (PAT)   | US\$3,741.00  |
|                    | EH Controls. Includes touchscreen PDU. Includes EZ Grade.<br>EH controls are required for 2D slope control or SmartGrade™.  |               |
| 7030               | 4 Function Electro-Hydraulics (EH) For Power-Angle-Tilt (PAT)   | US\$5,224.00  |
|                    | EH Controls. Includes auxiliary plumbing for ripper. Includes touchscreen PDU. Includes EZ Grade.<br>EH controls are required for 2D slope control or future upgrades to SmartGrade™.                                       |               |
| HYDRAULIC PUMP     |   |               |
| 7151               | Standard Hydraulic Pump   | No Added Cost |
| 7152               | Thru-Drive Hydraulic Pump for use with Direct Drive (PTO) Winch   | US\$467.00    |
|                    | For use with Deere 4000S Winch (mechanical drive). Includes external spline for winch or auxiliary pump   |               |

---

#### Vision System

|      |                |               |
|------|----------------|---------------|
| 0950 | No Rear Camera | No Added Cost |
|------|----------------|---------------|

---

|      |                               |              |
|------|-------------------------------|--------------|
| 0951 | Rear Camera (Primary Display) | US\$2,097.00 |
|------|-------------------------------|--------------|

---

|      |  |              |
|------|--|--------------|
| 0954 | Rear Camera - Includes Touchscreen PDU | US\$2,715.00 |
|------|--|--------------|

For machine ordered with manual controls.  
Brings in 8" Touchscreen Primary Display/Monitor

---

#### Detection System

|      |                     |               |
|------|---------------------|---------------|
| 1100 | No Detection System | No Added Cost |
|------|---------------------|---------------|

---

#### Connectivity Hardware

|      |         |               |
|------|---------|---------------|
| 183E | JDLINK™ | No Added Cost |
|------|---------|---------------|

Includes integrated cab wiring harness, antenna, and JDLINK™ Modem's (MTG).

JDLINK™ connectivity is enabled separately through the JDLINK™ website.  
Connectivity service is subject to country availability.

---

|      |                   |              |
|------|-------------------|--------------|
| 183Q | JDLINK™ Satellite | US\$3,000.00 |
|------|-------------------|--------------|

Includes integrated cab wiring harness, antenna, JDLINK™ Modem's (Cellular MTG & Satellite MTG).

JDLINK™ connectivity is enabled separately through the JDLINK™ website.  
Connectivity service is subject to country availability.

---

#### Display Hardware

|      |                      |              |
|------|----------------------|--------------|
| 1921 | G5 Universal Display | US\$3,588.00 |
|------|----------------------|--------------|

---

|  |  |               |
|--|--|---------------|
| 1900   | No Display                                   | No Added Cost |
| <hr/>  |  |               |
| Display Application  |  |               |
| 1950   | No Application                               | No Added Cost |
| <hr/>  |  |               |
| EZ Grade   |  |               |
| 2032   | EZ Grade                                     | No Added Cost |
| Only available with EH controls, assists the operator in making blade corrections to achieve smooth grades                 |  |               |
| - IMU (2)  |  |               |
| <hr/>  |  |               |
| 2001   | Less EZ Grade                                | No Added Cost |
| Only available with manual hydraulic controls  |  |               |
| <hr/>  |  |               |
| Grade Control  |  |               |
| 2941   | 2D Grade Control                             | US\$8,800.00  |
| Slope Control is an operator assist feature with three operating modes and automates blade movements to maintain slopes.   |  |               |
| - Integrates Slope Control into the standard machine primary display   |  |               |
| - Installation and calibration of the blade IMU is required for machines that ship less blade installed                    |  |               |
| - Universal Ready – enables CAN communication with aftermarket grade control systems                                       |  |               |
| - IMU (3), encoded cylinder (1)  |  |               |
| <hr/>  |  |               |
| 2942   | SmartGrade™ Ready Including 2D Grade Control | US\$10,667.00 |
| Requires option 1921 G5 Universal Display  |  |               |
| Slope Control is an operator assist feature with three operating modes which automates blade movements to maintain slopes. |  |               |
| - Integrates Slope Control into a dedicated 10" touchscreen secondary display (G5)   |  |               |
| - Recommended for rental fleets and customers who may later require SmartGrade™  |  |               |
| - Pre-wired for SmartGrade™ with Topcon and Leica, enabling seamless SmartGrade™   |  |               |
| upgradeability   |  |               |
| - 2D Laser Ready – Plug and play with 2D laser receiver field kit, no additional software needed                           |  |               |
| - Installation and calibration of the blade IMU is required for machines that ship less blade installed                    |  |               |
| - Primary and secondary display locations are swappable without the need of a field kit                                    |  |               |
| - Universal Ready – enables CAN communication with aftermarket grade control systems                                       |  |               |
| - IMU (3), encoded cylinder (1), 10" G5 Display (1)  |  |               |
| - Includes SmartGrade™ Ready license   |  |               |



|   |                          |               |
|---|--------------------------|---------------|
| 2950  | 3D SmartGrade™ Topcon    | US\$79,000.00 |
| <p>Requires option 1921 G5 Universal Display</p> <p>SmartGrade™ with Topcon is an integrated mastless 3D GNSS solution that integrates site plans to provide machine position and automate blade movements.</p> <ul style="list-style-type: none"> <li>- Integrates both SmartGrade™ and Slope Control into a dedicated 10" touchscreen secondary display (G5)</li> <li>- 2D Laser Ready – Plug and play with 2D laser receiver field kit, no additional software needed</li> <li>- Installation and calibration of the blade IMU is required for machines that ship less blade installed</li> <li>- Primary and secondary display locations are swappable without the need of a field kit</li> <li>- IMU (3), encoded cylinder (1), 10" G5 Display (1), Topcon GR-i3 GNSS antennas (2), Topcon UR-1 radio (1), Topcon MC-X1 controller (1)</li> <li>- Includes SmartGrade™ Ready license</li> <li>- Includes 3D SmartGrade™ with Topcon license</li> <li>- 3D license is transferable within machine family</li> </ul> |                          |               |
| 2970  | 3D SmartGrade™ Leica     | US\$79,000.00 |
| <p>Requires option 1921 G5 Universal Display</p> <p>SmartGrade™ with Leica is an integrated mastless 3D GNSS solution that integrates site plans to provide machine position and automate blade movements.</p> <ul style="list-style-type: none"> <li>- Integrates both SmartGrade™ and Slope Control into a dedicated 10" touchscreen secondary display (G5)</li> <li>- 2D Laser Ready – Plug and play with 2D laser receiver field kit, no additional software necessary</li> <li>- Installation and calibration of the blade IMU is required for machines that ship less blade installed</li> <li>- Primary and secondary display locations are swappable without the need of a field kit</li> <li>- IMU (3), encoded cylinder (1), 10" G5 Display (1), Leica iCG120 GNSS antennas (2), Leica iCA300 controller and RTK radio (1)</li> <li>- Includes SmartGrade™ Ready license</li> <li>- Includes 3D SmartGrade™ with Leica license</li> <li>- 3D license is transferable within machine family</li> </ul>         |                          |               |
| 2940  | No SmartGrade™ Installed | No Added Cost |
| Receivers   |                          |               |
| 1880  | No Receivers             | No Added Cost |
| Undercarriage Guarding  |                          |               |
| 6801  | Front Idler Guards       | No Added Cost |
| 6800  | No Front Idler Guards    | (US\$669.00)  |

---

## Basic Factory Options - Optional

### Engine - Order As Desired

|      |                                |            |
|------|--------------------------------|------------|
| 8049 | Engine Air Precleaner - Rotary | US\$516.00 |
|------|--------------------------------|------------|

---

|      |                         |            |
|------|-------------------------|------------|
| 8123 | Severe-Duty Fuel Filter | US\$926.00 |
|------|-------------------------|------------|

---

### Attachments - Order As Desired

|      |                 |            |
|------|-----------------|------------|
| 8196 | Retrieval Hitch | US\$404.00 |
|------|-----------------|------------|

Recommended for pull-type implements (extends 6.1 In / 155 mm)

Not for Use with: Ripper or extended rigid drawbar

Can be used with rear counterweight

---

|      |                                 |            |
|------|---------------------------------|------------|
| 8094 | Extended Rigid Drawbar With Pin | US\$545.00 |
|------|---------------------------------|------------|

Recommended for pull type implements that require turning clearance (extends 11.3 In / 288 mm)

Not for use with: Retrieval hitch, model 4000 winch

Can be used with rear counterweight

---

|      |  |               |
|------|--|---------------|
| 8129 | Heavy Duty Parallelogram Ripper With 5 Shank Pockets and (3) Shank/Teeth | US\$18,016.00 |
|------|--|---------------|

Requires: 4 function hydraulics

Cannot be used with: retrieval hitch, or extended rigid drawbar

---

|      |   |               |
|------|---|---------------|
| 8162 | Model 4000 Standard Speed Winch - Power In, Freespool Out | US\$20,624.00 |
|------|---|---------------|

Requires: Thru-drive hydraulic pump, rear screen

Not for Use with: Ripper, retrieval hitch, or traditional extended rigid drawbar

|      |   |               |
|------|---|---------------|
| 8163 | Model 4000 Standard Speed Winch - Power In, Power Out   | US\$23,275.00 |
|      | Requires: Thru-drive hydraulic pump, rear screen  |               |
|      | Not for Use with: Ripper, retrieval hitch, or traditional extended rigid drawbar  |               |
| 8161 | Model 4000 Low Speed Winch - Power In, Power Out  | US\$24,248.00 |
|      | Requires: Thru-drive hydraulic pump, rear screen  |               |
|      | Not for Use with: Ripper, retrieval hitch, or traditional extended rigid drawbar  |               |
| 8091 | Extended Rigid Drawbar for Use with Winch   | US\$1,157.00  |
|      | For use with model 4000 winch   |               |
| 8026 | 4000 Winch Fairlead, Four Roller  | US\$5,069.00  |
|      | Requires: Thru-drive hydraulic pump, rear screen  |               |
|      | Not for use with: Ripper, retrieval hitch, or traditional extended rigid drawbar  |               |
| 8106 | Front Counterweight   | US\$747.00    |
|      | 94 kg. (207 lb.)  |               |
|      | Packages-Order As Desired   |               |
| 8104 | Fluid Sampling Ports Package  | US\$301.00    |
|      | Includes color-coded sampling ports to collect oil samples from engine, hydraulic, and hydrostatic systems.               |               |
| 8179 | Quick Service Package   | US\$927.00    |
|      | Includes quick service ports and plumbing for quick evacuation and fill of hydraulic oil, engine oil, and engine coolant. |               |
| 8065 | Cold Weather Starting Package   | US\$120.00    |



Includes:

- Ether Start Aid (T3 engines only)
- Engine Block Coolant Heater (110 volt)

---

|      |                      |            |
|------|----------------------|------------|
| 8500 | Cold Weather Package | US\$132.00 |
|------|----------------------|------------|

Includes:

- upgrade to Hydrau XR Oil (factory fill, all-season temperatures ranging from -40C to 40C / -40F to 104F)
- Ether Start Aid (T3 engines only)
- Engine Block Coolant Heater (110 volt)

---

Operator's Station-Order As Desired

|      |                   |            |
|------|-------------------|------------|
| 8194 | Rear Wiper/Washer | US\$705.00 |
|------|-------------------|------------|

---

|      |                   |            |
|------|-------------------|------------|
| 8181 | Cab step, Bolt-on | US\$180.00 |
|------|-------------------|------------|

---

|      |  |           |
|------|--|-----------|
| 8097 | External Mounted Rear Attachments Mirror | US\$92.00 |
|------|--|-----------|

---

|      |                           |           |
|------|---------------------------|-----------|
| 8030 | Fire Extinguisher Bracket | US\$92.00 |
|------|---------------------------|-----------|

---

|      |                          |              |
|------|--------------------------|--------------|
| 8235 | Under-Seat Canopy Heater | US\$1,343.00 |
|------|--------------------------|--------------|

Requires: Canopy

30,000 BTU

---

Mainframe/Structures - Order As Desired

|      |                   |              |
|------|-------------------|--------------|
| 8126 | Heavy Duty Grille | US\$1,381.00 |
|------|-------------------|--------------|

Heavy gauge plate grille, protects lights and fittings on both ends of front hydraulic hoses  
Suggested for forestry and land clearing applications



|      |  |              |
|------|--|--------------|
| 8188 | Rear Screen for Cab                            | US\$1,936.00 |
|      | Requires: Cab<br>Advised for Winch application |              |

---

|      |   |              |
|------|---|--------------|
| 8189 | Rear Screen for Canopy                            | US\$1,398.00 |
|      | Requires: Canopy<br>Advised for Winch application |              |

---

Electrical - Order As Desired

|      |              |            |
|------|--------------|------------|
| 8071 | Beacon Light | US\$304.00 |
|------|--------------|------------|

---

|      |                       |           |
|------|-----------------------|-----------|
| 8118 | Halogen Light Package | US\$40.00 |
|------|-----------------------|-----------|

---

Miscellaneous - Order As Desired

|      |                                    |            |
|------|------------------------------------|------------|
| 8039 | Non-Export Rust Preventive Coating | US\$156.00 |
|------|------------------------------------|------------|

---

Field Installed Attachments - Optional

Cold Start

|          |  |           |
|----------|--|-----------|
| AT211191 | 110 Volt Engine Coolant Heater (1000 Watt) | US\$99.00 |
|----------|--|-----------|

---

Powertrain

|          |                                   |            |
|----------|-----------------------------------|------------|
| BYT13366 | Severe Duty Fuel Filter Field Kit | US\$525.00 |
|----------|-----------------------------------|------------|

---

Guards

|          |  |            |
|----------|--|------------|
| BYT10418 | Final Drive Drain Plug Guard Field Kit | US\$240.00 |
|----------|--|------------|

---

**Miscellaneous**

|          |                   |            |
|----------|-------------------|------------|
| BYT10484 | Universal Monitor | US\$422.00 |
|----------|-------------------|------------|

---

**Frame Attachment**

|          |                         |            |
|----------|-------------------------|------------|
| AT225884 | Reinforcement Blade Kit | US\$108.00 |
|----------|-------------------------|------------|

---

|          |                                       |            |
|----------|---------------------------------------|------------|
| AT451157 | Front Counterweight, 94 kg. (207 lb.) | US\$732.00 |
|----------|---------------------------------------|------------|

---

|          |  |            |
|----------|--|------------|
| BYT12430 | Extended Drawbar, 4000 Winch with Pin and Hardware | US\$946.00 |
|----------|--|------------|

---

|          |                         |            |
|----------|-------------------------|------------|
| AT311768 | C-Frame Tilt Clevis Kit | US\$397.00 |
|----------|-------------------------|------------|

---

|          |  |            |
|----------|--|------------|
| BYT12683 | Rear Counterweight, 336 Lb. (152.6 Kg) - Field Kit | US\$711.00 |
|----------|--|------------|

---

|          |                                 |               |
|----------|---------------------------------|---------------|
| BYT13201 | Rear Ripper/Scarifier Field Kit | US\$19,080.00 |
|----------|---------------------------------|---------------|

---

|          |                           |                |
|----------|---------------------------|----------------|
| BYT13573 | Fire Tractor Plow Package | US\$120,210.00 |
|----------|---------------------------|----------------|

---

**G.R.Mfg.**

|          |                           |            |
|----------|---------------------------|------------|
| BYT13355 | Lift Cylinder Hose Guards | US\$430.00 |
|----------|---------------------------|------------|

|          |  |              |
|----------|--|--------------|
| BYT12451 | Side Screens for Canopy Field Kit              | US\$1,549.00 |
| BYT12450 | Side Screens for Cab Field Kit                 | US\$1,991.00 |
| BYT12885 | Canopy Rear Winch Screen Field Kit             | US\$1,126.00 |
| BYT12448 | Screens, Cab Front Window and Doors Field Kit  | US\$3,269.00 |
| BYT12452 | AC Condenser Guard for Cab                     | US\$1,289.00 |
| BYT13322 | Tank Guard Kit - XLT                           | US\$1,840.00 |
| BYT13323 | Tank Guard Kit - LGP                           | US\$1,840.00 |
| BYT13351 | Brush Guard, Full Width for 90 - 97 Inch Blade | US\$1,120.00 |
| BYT13352 | Brush Guard, Full Width for 105 Inch Blade     | US\$1,264.00 |
| BYT13353 | Brush Guard, Full Width for 115 Inch Blade     | US\$1,264.00 |

|          |   |               |
|----------|---|---------------|
| BYT13356 | Root Rake, 115" Standard Duty without Brush Guard                     | US\$5,840.00  |
| BYT13357 | Root Rake, 115" Heavy Duty with Brush Guard                           | US\$9,542.00  |
| BYT13358 | Root Rake, 124" Standard Duty without Brush Guard                     | US\$5,840.00  |
| BYT13359 | C-Frame Reinforcement Kit, Blade Rake                                 | US\$1,192.00  |
| BYT13360 | Root Rake, 124" Heavy Duty with Brush Guard                           | US\$9,542.00  |
| BYT13361 | Root Rake, 128" Heavy Duty with Brush Guard                           | US\$9,542.00  |
| BYT13350 | Brush Guard, Center grill width, 41 Inch Wide for 90 - 121 Inch Blade | US\$680.00    |
| BYT12454 | Limb Risers, for Cab or Canopy Units                                  | US\$3,278.00  |
| BYT13532 | Full Enclosure Cab Screens with Limb Riser Kit                        | US\$11,611.00 |
| BYT13518 | Utility Crawler Screens, Cab Rear - Winch Kit                         | US\$1,784.00  |
| BYT12449 | Screens, Canopy, Front Window and doors - Field Kit                   | US\$3,157.00  |



---

#### Operator Environment

|          |                                   |              |
|----------|-----------------------------------|--------------|
| BYT13230 | Canopy Rear View Camera Field Kit | US\$2,087.00 |
|----------|-----------------------------------|--------------|

---

|          |                                |              |
|----------|--------------------------------|--------------|
| BYT13231 | Cab Rear View Camera Field Kit | US\$2,087.00 |
|----------|--------------------------------|--------------|

---

|          |                               |            |
|----------|-------------------------------|------------|
| BYT13232 | CAN Vehicle Gateway Field Kit | US\$485.00 |
|----------|-------------------------------|------------|

---

#### Overall Vehicle

|          |                         |            |
|----------|-------------------------|------------|
| BYT13204 | Quick Service Field Kit | US\$743.00 |
|----------|-------------------------|------------|

---

|          |                                   |            |
|----------|-----------------------------------|------------|
| BYT12048 | Engine Air Precleaner - Field Kit | US\$335.00 |
|----------|-----------------------------------|------------|

---

#### PACCAR Winch Div

|          |   |              |
|----------|---|--------------|
| AT336215 | 3 Roller Fairlead Kit for Hydraulic Winch | US\$4,510.00 |
|----------|---|--------------|

---

#### Winches

|          |   |              |
|----------|---|--------------|
| AT460040 | External lines with Accumulator for Power In/Power Out Winches<br>on 450K, 550K and 650K Only | US\$1,442.00 |
|----------|---|--------------|

---

|          |                                  |              |
|----------|----------------------------------|--------------|
| BYT13209 | Winch Mounting Bracket Field Kit | US\$3,350.00 |
|----------|----------------------------------|--------------|

---

|                      |   |               |
|----------------------|---|---------------|
| BYT13574             | Fire Tractor Rear Winch Package                 | US\$77,804.00 |
| BYT13269             | PI/FO Mechanical to EH Control Conversion       | US\$1,648.00  |
| BYT13270             | PI/PO Mechanical to EH Control Conversion       | US\$1,831.00  |
| BYT13509             | Winch Drive Component Field Kit                 | US\$941.00    |
| BYT13510             | PI/PO Winch Control for 450 P, 550 P, 650 P     | US\$856.00    |
| Powertrain & Cooling |   |               |
| BYT13206             | Hydraulic Fan Drive Reversing Motor - Field Kit | US\$322.00    |
| Grade Control        |   |               |
| BYT13192             | Slope Control Field Kit P-Tier Small Dozer      | US\$7,920.00  |
| Hydraulics           |   |               |
| BYT13214             | Auxiliary Fifth Section Valve Field Kit         | US\$902.00    |
| BYT13207             | Auxiliary Fourth Section Valve Field Kit        | US\$902.00    |
| BYT13216             | EH Auxiliary Valve Field Kit                    | US\$1,570.00  |

---

|          |  |            |
|----------|--|------------|
| BYT13202 | Auxiliary Plumbing for Rear Attachment - Field Kit | US\$293.00 |
|----------|--|------------|

---

|          |  |            |
|----------|--|------------|
| BYT13203 | Auxiliary Plumbing for Winch - Field Kit | US\$489.00 |
|----------|--|------------|

---

Manufacturer's Suggested List Price shown. Retail prices may vary by dealer. Unless stated otherwise, taxes, freight, setup, delivery and other dealer specific charges not included in the pricing. Options/items noted with anything other than price will have additional costs. Pricing, availability, and specifications subject to change without notice. Special program pricing may be available on certain models. See dealer for details. Prices are shown in USD unless otherwise noted.



# 650 P

Dozer



JOHN DEERE





# THE FOUNDATION OF THE WORK YOU DO

You've been in the construction industry for a long time. So you know that your work is about more than just moving material. The success of your entire operation can rely on your dozer and the productivity and retention of able operators. With input from customers like you, John Deere has been designing and manufacturing dozers for almost 75 years. Including proven standard features and innovative options that enhance the operating experience and improve ownership economics, our new 650 P-Tier is built on the bedrock of some of your best ideas.

---

## Set things up

Because no two operators have the same work skill or technique, adjustable hydraulic and transmission settings can be customized to individual user preferences, for responsive control, smooth stability, and precise grading performance.

## It's all about the operator

All-new next-generation cab is 14-percent larger than the previous model, to elevate operator comfort. Redesigned controls that minimize hand and arm movements, advanced touch-screen displays with configurable settings, and optional premium heated/ventilated seat and automatic temperature control (ATC) system help get operators up to speed and in the productive zone.

## Visibility matters

A lower hood line and 14-percent more glass area expand visibility to the blade and jobsite ahead. Optional rearview camera boosts awareness of the activity behind the machine. New LED light package brings things into focus in darker environments.

## Put progress on display

Standard on electrohydraulic configurations, eight-inch touch-screen primary display reveals machine health and configurable settings plus rearview camera and Slope Control (if equipped). Additional 10-inch touch-screen display for navigating the grade-control interface is added when the machine is outfitted with dual-laser receivers.







650 P-TIER DOZER

## GRADE-MANAGEMENT SOLUTIONS

Our suite of factory-integrated grade-management technologies including standard EZGrade and optional 2D Slope Control and Slope Control With Dual Laser simplify difficult grading tasks. These intuitive offerings are easy for operators of any experience level to master. All technology options are fully supported by the John Deere dealer network and can be efficiently upgraded as your operation evolves:

- All-new **EZGrade** feature aids operators in manually grading smooth finish passes by making small blade corrections automatically.
- **Slope Control** assists in grading and maintaining flat, smooth, and sloping surfaces. Operators can view and set blade slope while the system automatically controls the blade to the desired slope percentage.
- **Slope Control With Dual Laser** enables operators to automatically control the blade to a specific slope and elevation using a rotating laser.



GRADE-MANAGEMENT OPTIONS  
**STREAMLINE  
GRADING TASKS &  
LEARNING CURVES**



### Operator detection

New operator-presence system uses a built-in sensor to detect that the seat is occupied before the park brake is released, to prevent unintentional machine movement.

### Management fundamentals

Simply set maximum desired ground speed and the power-management system automatically maintains peak engine speed and power efficiency without stalling or shifting.

### Take your turn

Counter-rotation boosts productivity by enabling operators to overcome heavy corner loads and quickly reposition the blade on the go.

### Tough where it counts

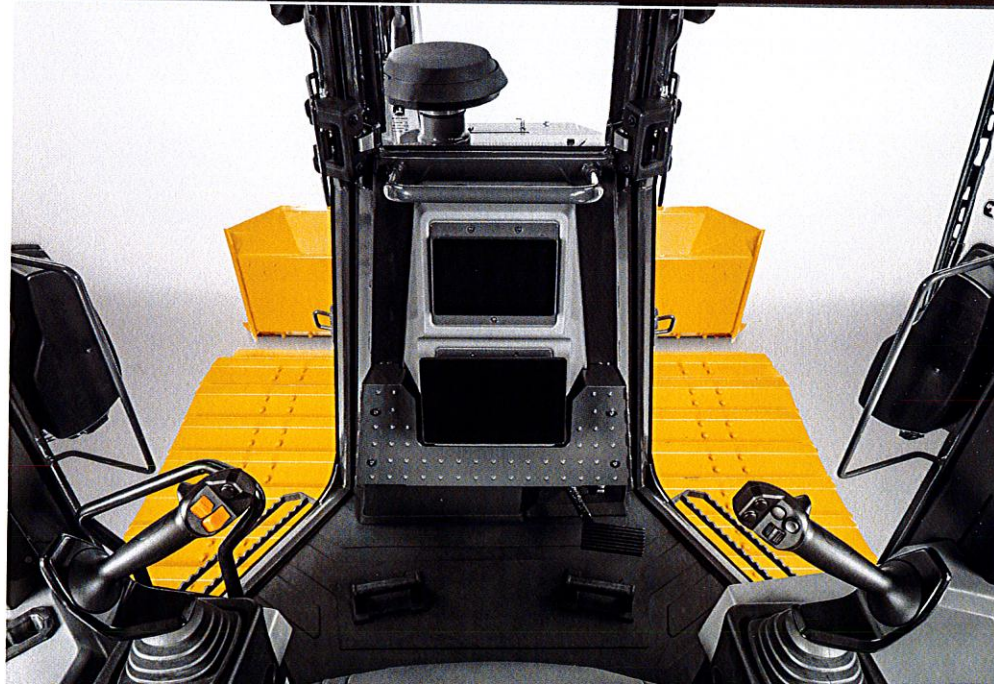
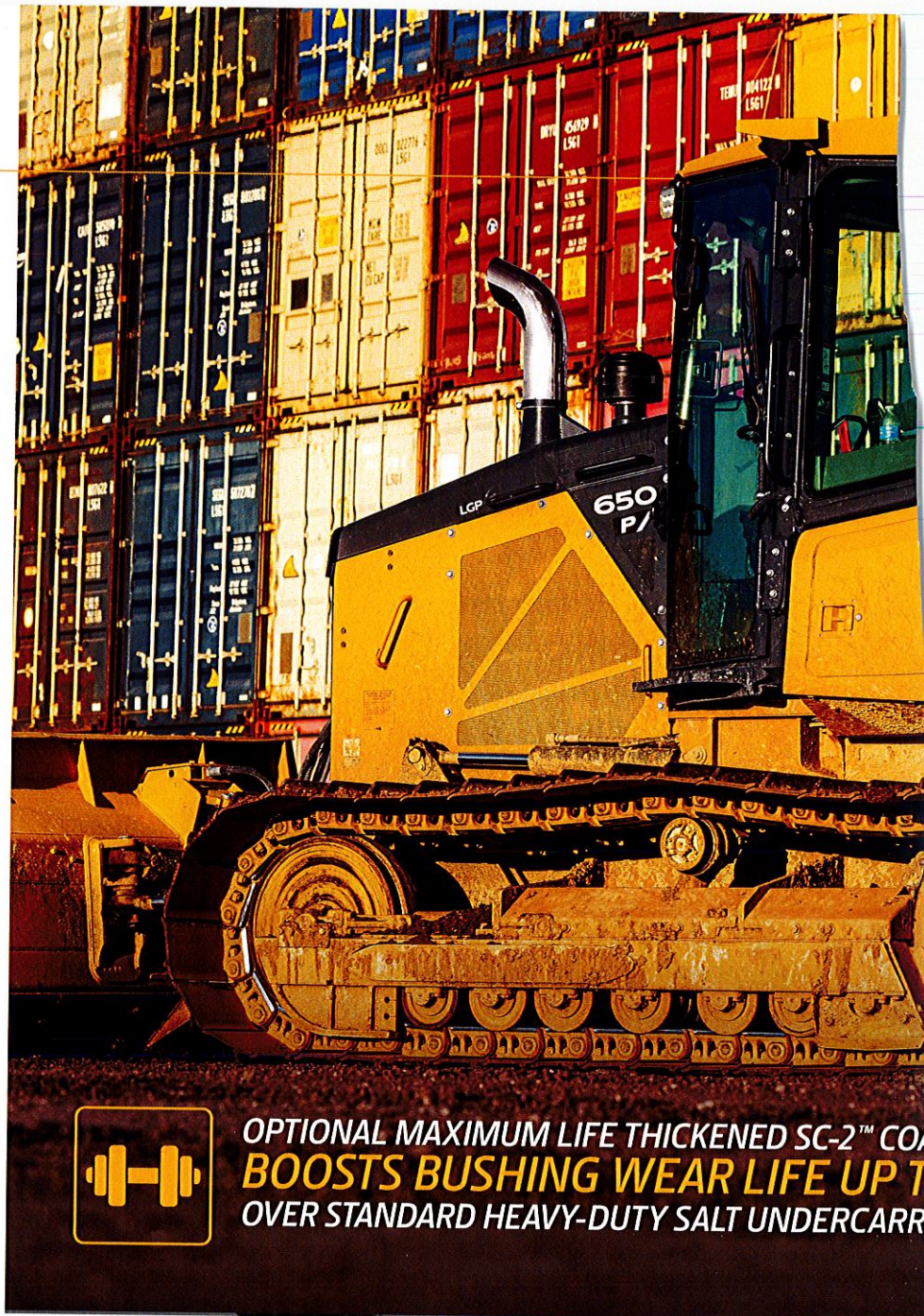
Thickened SC-2 coating on the bushings of the optional Maximum Life undercarriage helps reduce wear life by up to 75 percent over standard heavy-duty sealed and lubricated (SALT) undercarriages, to keep working longer. Routings of hydraulic hoses and electrical harnesses have been optimized to reduce leaks, rubbing, and time-consuming replacement.

### Fuel saver

Standard Eco mode automatically adjusts engine speed and power-train settings based on load, to maximize fuel usage by up to 20 percent compared to standard operating mode, without loss of performance.

### Get a full measure

Integrated welded-on spill sheet on the large 128-inch-wide blade increases capacity and helps reduce damage caused by material spillage behind the blade.





## 650 P-TIER DOZER



### Precision Construction

From grade management and obstacle detection to product automation features and jobsite intelligence, this suite of construction technology delivers productivity solutions to help you get more done, more efficiently.

John Deere construction equipment comes with in-base connectivity — free from subscriptions or annual renewals. Analyze critical machine data, track utilization, review diagnostic alerts, and more from **the John Deere Operations Center™**. The Operations Center also enables **John Deere Connected Support™**, which uses data from thousands of connected machines to proactively address issues before they arise. Your dealer can also remotely monitor machine health, diagnose problems, and even update machine software without a trip to the jobsite.\*

\*Availability varies by region and product. Options not available in every country.





# 650

# P

## 650 P-TIER DOZER SPECIFICATIONS

While general information, pictures, and descriptions are provided, some illustrations and text may include product options and accessories NOT AVAILABLE in all regions, and in some countries products and accessories may require modifications or additions to ensure compliance with the local regulations of those countries.

### Engine 650 P-TIER XLT / 650 P-TIER LGP

|                            |  |  |
|----------------------------|--|--|
| Manufacturer and Model     | John Deere PowerTech™ PWS 4045               | John Deere PowerTech™ PWX 4045               |
| Non-Road Emission Standard | EPA Final Tier 4/EU Stage V                  | EPA Tier 3/EU Stage IIIA                     |
| Displacement               | 4.5L (276 cu. in.)                           | 4.5L (276 cu. in.)                           |
| SAE Net Rated Power        | 78 kW (104 hp) at 1,900 rpm                  | 78 kW (104 hp) at 1,900 rpm                  |
| Net Peak Torque            | 492 Nm (363 ft.-lb.) at 1,400 rpm            | 450 Nm (332 ft.-lb.) at 1,300 rpm            |
| Aspiration                 | Turbocharged with charge-air cooler          | Turbocharged with charge-air cooler          |
| Air Cleaner                | Dual-stage dry tube with tangential unloader | Dual-stage dry tube with tangential unloader |

### Cooling

|                       |  |
|-----------------------|--|
| Type                  | Variable-speed suction fan with optional reversing feature |
| Engine Coolant Rating | -37 deg. C. (-34 deg. F)                                   |
| Engine Radiator       | 8.47 fins per in.  |

### Powertrain

|                        |  |
|------------------------|--|
| Transmission           | Automatic, dual-path, hydrostatic (HST) drive; load-sensing feature automatically adjusts speed and power to match changing load conditions; each individually controlled track is powered by a variable-displacement piston pump and variable-displacement motor combination; ground-speed selection buttons and direction-control switch on single-lever steering control; independently selectable reverse speed ratios of 100%, 115%, or 130% of forward ground speed; decelerator pedal controls ground speed to stop |
| System Relief Pressure | 42 692 kPa (6,192 psi)   |

### Travel Speeds

|                     |                    |
|---------------------|--------------------|
| Forward and Reverse | 8.0 km/h (5.0 mph) |
| Maximum (optional)  | 9.7 km/h (6.0 mph) |

### Steering

Single-lever steering, speed, direction control, and counter-rotation; full power turns and infinitely variable track speeds provide unlimited maneuverability and optimum control; HST steering eliminates steering clutches and brakes

### Final Drives

Triple-reduction final drives mounted independently of track frames and dozer push frames for isolation from shock loads  
52.13 to 1

### Total Ratio

### Drawbar Pull

|                       |                     |
|-----------------------|---------------------|
| Maximum               | 152 kN (34,250 lb.) |
| At 1.9 km/h (1.2 mph) | 104 kN (23,330 lb.) |
| At 3.2 km/h (2.0 mph) | 65 kN (14,685 lb.)  |

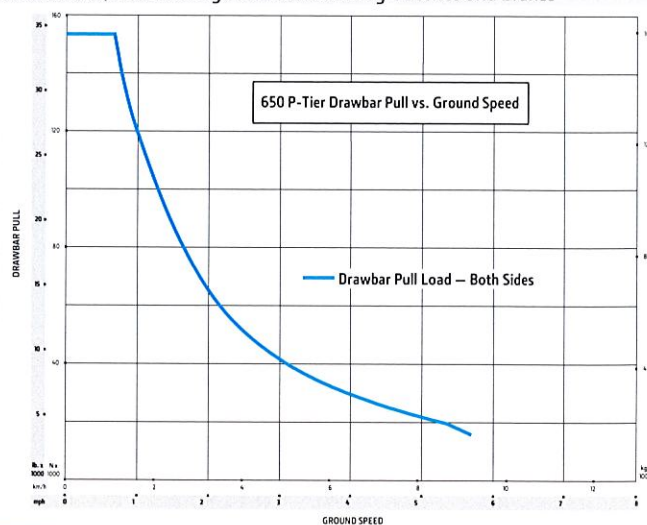
### Brakes

#### Service

HST (dynamic) braking stops the machine when the direction-control switch is moved to neutral or the decelerator is depressed to the detent

#### Parking

Engages wet, multiple-disc brakes when ever the engine stops, the decelerator is depressed to the end of travel, or motion is detected while the transmission control is in neutral; machine cannot be driven with brake applied, minimizing wearout; spring applied, hydraulic release



### Hydraulics

|                                    |   |
|------------------------------------|---|
| Type                               | Open-center hydraulic system with fixed-displacement gear pump              |
| Pump Displacement                  | 35.4 cc   |
| System Relief Pressure             | 20 684 kPa (3,000 psi)  |
| Maximum Flow at Unloaded High Idle | 71.5 L/m (19 gpm)   |
| Control                            | 3-function direct-acting T-bar grip with proportional roller angle function |

### Electrical

|                   |   |
|-------------------|---|
| Voltage           | 24 volts  |
| Capacity          |   |
| Battery           | 950 CCA   |
| Reserve           | 190 min.  |
| Alternator Rating |   |
| Cab               | 100 amp   |
| Canopy            | 100 amp   |
| Lights            | Cab mounted (4) standard / Cab-mounted LED (8) optional |



## 650 P-TIER DOZER SPECIFICATIONS

# 650

# P

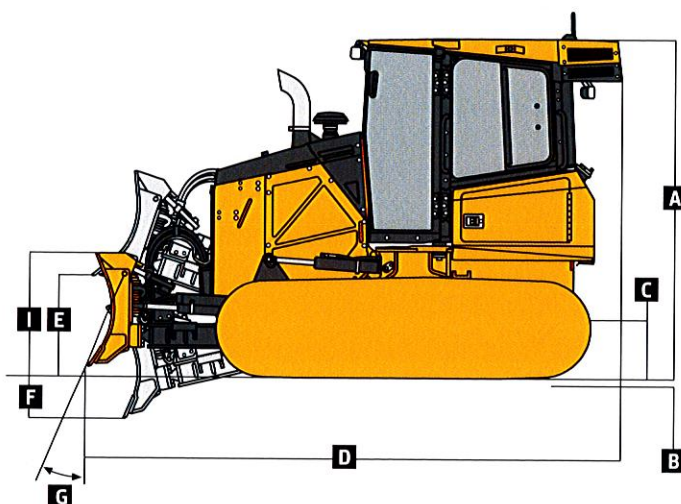
While general information, pictures, and descriptions are provided, some illustrations and text may include product options and accessories NOT AVAILABLE in all regions, and in some countries products and accessories may require modifications or additions to ensure compliance with the local regulations of those countries.

| Undercarriage   |  | 650 P-TIER XLT  | 650 P-TIER LGP                         |
|---|--|---|--|
| <b>Tracks</b>   |  | John Deere undercarriage features large deep-heat-treated components; pins and bushings are sealed for life; rollers and idlers are permanently sealed and lubricated |  |
| Track Gauge   |  | 1550 mm (61 in.)  | 1753 mm (69 in.)                       |
| Grouser Width   |  | 457 mm (18 in.)   | 711 mm (28 in.)                        |
| Chain   |  | Sealed and lubricated   | Sealed and lubricated                  |
| Shoes, Each Side  |  | 40  | 40                                     |
| Track Rollers, Each Side  |  | 7   | 7                                      |
| Track Length on Ground  |  | 2626 mm (103 in.)   | 2626 mm (103 in.)                      |
| Ground Contact Area   |  | 23 998 cm <sup>2</sup> (3,720 sq. in.)  | 37 336 cm <sup>2</sup> (5,787 sq. in.) |
| Ground Pressure   |  | 44.1 kPa (6.4 psi)  | 29.6 kPa (4.3 psi)                     |
| Track Pitch   |  | 171 mm (6.7 in.)  | 171 mm (6.7 in.)                       |
| Operator Station  |  | 650 P-TIER XLT / 650 P-TIER LGP   |  |
| ROPS (ISO 3471 – 2008) and FOPS (ISO 3449 – 2005)   |  |   |  |
| Serviceability  |  | Refill Capacities (continued)   |  |
| <b>Refill Capacities</b>  |  |   |  |
| Fuel Tank With Lockable Cap   |  | 202 L (53.45 gal.)  | 14.7 L (15.5 qt.)                      |
| Diesel Exhaust Fluid (DEF) Tank   |  | 12.4 L (3.3 gal.)   | 70.5 L (18.6 gal.)                     |
| Cooling System With Recovery Tank   |  | 16.9 L (4.5 gal.)   | 8.5 L (2.3 gal.)                       |
| Final Drive (each)  |  |   |  |
| Operating Weights   |  | 650 P-TIER XLT  | 650 P-TIER LGP                         |
| Base Weight (with standard equipment, rollover protective structure [ROPS], full fuel tank, and 79-kg [175 lb.] operator) |  | 9600 kg (21,165 lb.)  | 10 198 kg (22,484 lb.)                 |
| Optional Components   |  |   |  |
| Cab With Pressurizer and Heater/<br>Air Conditioner   |  | 361 kg (796 lb.)  | 361 kg (796 lb.)                       |
| Front and Door Screens  |  | 88 kg (193 lb.)   | 88 kg (193 lb.)                        |
| Rear Screen   |  | 50 kg (110 lb.)   | 50 kg (110 lb.)                        |
| Side Screens  |  | 60 kg (132 lb.)   | 60 kg (132 lb.)                        |
| Limb Risers   |  | 239 kg (528 lb.)  | 239 kg (528 lb.)                       |
| Condenser Guard   |  | 53 kg (117 lb.)   | 53 kg (117 lb.)                        |
| ROPS Canopy   |  |   |  |
| Heater  |  | 62 kg (136 lb.)   | 62 kg (136 lb.)                        |
| Front and Door Screens  |  | 74 kg (163 lb.)   | 74 kg (163 lb.)                        |
| Rear Screen   |  | 28 kg (61 lb.)  | 28 kg (61 lb.)                         |
| Side Screens  |  | 37 kg (82 lb.)  | 37 kg (82 lb.)                         |
| Limb Risers   |  | 239 kg (528 lb.)  | 239 kg (528 lb.)                       |
| Counterweight   |  |   |  |
| Front   |  | 109 kg (240 lb.)  | 109 kg (240 lb.)                       |
| Rear  |  | 150 kg (330 lb.)  | 150 kg (330 lb.)                       |
| Retrieval Hitch   |  | 23 kg (50 lb.)  | 23 kg (50 lb.)                         |
| Drawbar, Extended Rigid   |  | 33 kg (72 lb.)  | 33 kg (72 lb.)                         |
| Winch   |  | 652 kg (1,437 lb.)  | 652 kg (1,437 lb.)                     |
| Fairlead, 4 Roller  |  | 85 kg (187 lb.)   | 85 kg (187 lb.)                        |
| Center Chain Guides   |  | 33 kg (73 lb.)  | 33 kg (73 lb.)                         |
| Full-Length Rock Guards   |  | 41 kg (90 lb.)  | 41 kg (90 lb.)                         |
| Maximum Life Undercarriage  |  | 80 kg (175 lb.)   | 80 kg (175 lb.)                        |
| Track Shoes   |  |   |  |
| 457 mm (18 in.)   |  |   |  |
| Heavy Duty  |  | In base   | –464 kg (–1,023 lb.)                   |
| Extended Life   |  | 16 kg (35 lb.)  | –448 kg (–988 lb.)                     |
| Maximum Life  |  | 143 kg (315 lb.)  | –321 kg (–708 lb.)                     |
| 508 mm (20 in.)   |  |   |  |
| Heavy Duty  |  | 96 kg (212 lb.)   | –368 kg (–811 lb.)                     |
| Extended Life   |  | 64 kg (141 lb.)   | –400 kg (–882 lb.)                     |
| Maximum Life  |  | 192 kg (423 lb.)  | –272 kg (–600 lb.)                     |
| 610 mm (24 in.)   |  |   |  |
| Heavy Duty  |  | –   | –162 kg (–357 lb.)                     |
| Extended Life   |  | –   | –187 kg (–412 lb.)                     |
| Maximum Life  |  | –   | –60 kg (–132 lb.)                      |
| 710 mm (28 in.)   |  |   |  |
| Heavy Duty  |  | –   | In base                                |
| Extended Life   |  | –   | –42 kg (–93 lb.)                       |
| Maximum Life  |  | –   | 85 kg (187 lb.)                        |

## 650 P-TIER

While general information, pictures, and descriptions are provided, some illustrations and text may include product options and accessories NOT AVAILABLE in all regions, and in some countries products and accessories may require modifications or additions to ensure compliance with the local regulations of those countries.

| Machine Dimensions  | 650 P-TIER XLT / 650 P-TIER LGP |
|---|---------------------------------|
| A Overall Height to Roof (includes antenna base and grouser height) | 2899 mm (9 ft. 6 in.)           |
| Overall Height With Limb Risers (includes grouser height)           | 2928 mm (9 ft. 7 in.)           |
| B Tread Depth With Single-Bar Grouser                               | 49 mm (1.9 in.)                 |
| C Ground Clearance in Dirt  | 345 mm (13.6 in.)               |
| D Overall Length  | 4250 mm (13 ft. 11 in.)         |
| Overall Length With Standard Drawbar                                | 4250 mm (13 ft. 11 in.)         |
| Overall Length With Extended Drawbar                                | 4414 mm (14 ft. 6 in.)          |
| Overall Length With Winch and Fairlead Rollers                      | 4974 mm (16 ft. 4 in.)          |
| E Blade Lift Height   | 801 mm (31.5 in.)               |
| F Blade Digging Depth   | 538 mm (21.2 in.)               |
| G Blade Cutting-Edge Angle, Adjustable                              | 52 to 60 deg.                   |



650 P-TIER XLT / 650 P-TIER LGP

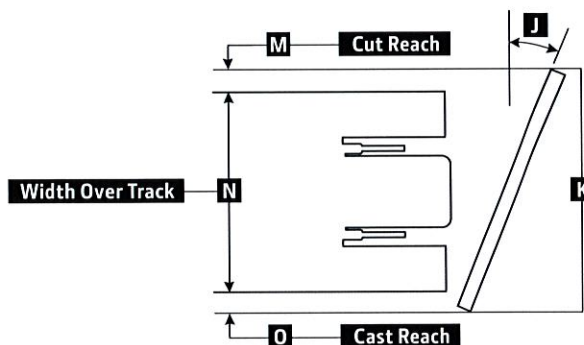
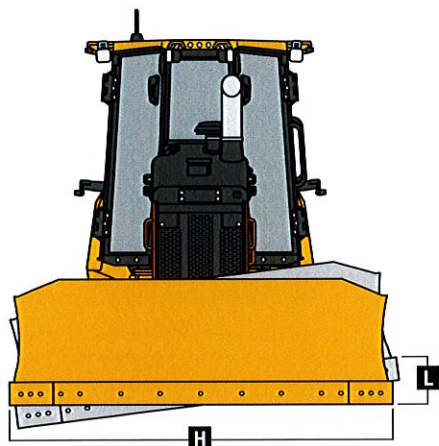
| Machine Dimensions (continued)          | 650 P-TIER XLT                  | 650 P-TIER LGP                   |
|---|---------------------------------|----------------------------------|
| <b>Straight Blade</b>                   |                                 |                                  |
| H Blade Width                           | 2667 mm (105 in.) (8 ft. 9 in.) | 2921 mm (115 in.) (9 ft. 7 in.)  |
| I Blade Height                          | 1067 mm (3 ft. 6 in.)           | 955 mm (3 ft. 2 in.)             |
| SAE Capacity                            | 2.2 m³ (2.9 cu. yd.)            | 2.0 m³ (2.6 cu. yd.)             |
| Weight                                  | 608 kg (1,340 lb.)              | 628 kg (1,385 lb.)               |
| C-Frame Assembly Weight (without blade) | 512 kg (1,129 lb.)              | 512 kg (1,129 lb.)               |
| J Blade Angle                           | 22.9 deg.                       | 22.9 deg.                        |
| K Overall Width With Blade Angled       | 2456 mm (8 ft. 1 in.)           | 2689 mm (8 ft. 10 in.)           |
| L Blade Tilt                            | 363 mm (14.3 in.)               | 393 mm (15.5 in.)                |
| M Cut Reach                             | 81 mm (3.2 in.)                 | -36 mm (-1.4 in.)                |
| N Width Over Track                      | 2007 mm (6 ft. 7 in.)           | 2464 mm (8 ft. 1 in.)            |
| O Cast Reach                            | 368 mm (14.5 in.)               | 261 mm (10.3 in.)                |
| <b>Straight Blade (option)</b>          |                                 |                                  |
| H Blade Width                           | 2921 mm (115 in.) (9 ft. 7 in.) | 3150 mm (124 in.) (10 ft. 4 in.) |
| I Blade Height                          | 955 mm (3 ft. 2 in.)            | 894 mm (35 in.)                  |
| SAE Capacity                            | 2.0 m³ (2.6 cu. yd.)            | 2.3 m³ (3.1 cu. yd.)             |
| Weight                                  | 628 kg (1,385 lb.)              | 631 kg (1,391 lb.)               |
| C-Frame Assembly Weight (without blade) | 512 kg (1,129 lb.)              | 512 kg (1,129 lb.)               |
| J Blade Angle                           | 22.9 deg.                       | 22.9 deg.                        |
| K Overall Width With Blade Angled       | 2689 mm (8 ft. 10 in.)          | 2899 mm (9 ft. 6 in.)            |
| L Blade Tilt                            | 393 mm (15.5 in.)               | 429 mm (16.9 in.)                |
| M Cut Reach                             | 193 mm (7.6 in.)                | 73 mm (2.9 in.)                  |
| N Width Over Track                      | 2007 mm (6 ft. 7 in.)           | 2464 mm (8 ft. 1 in.)            |
| O Cast Reach                            | 490 mm (19.3 in.)               | 362 mm (14.3 in.)                |



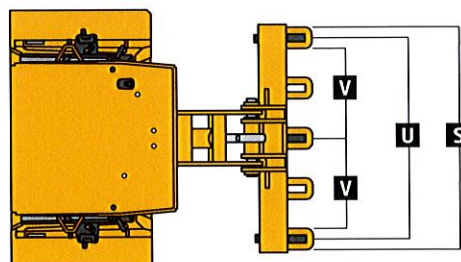
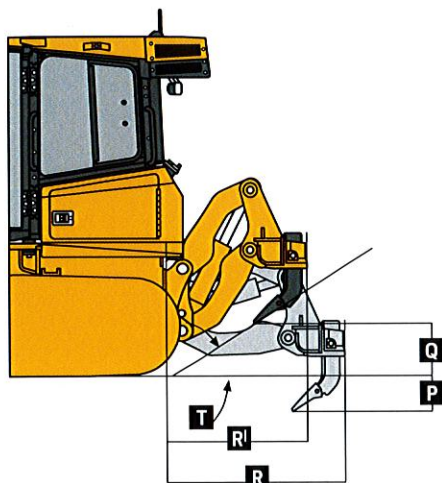
While general information, pictures, and descriptions are provided, some illustrations and text may include product options and accessories NOT AVAILABLE in all regions, and in some countries products and accessories may require modifications or additions to ensure compliance with the local regulations of those countries.

## 650 P-TIER

| Machine Dimensions (continued) |   | 650 P-TIER XLT | 650 P-TIER LGP                   |
|--------------------------------|---|----------------|----------------------------------|
| <b>Straight Blade (option)</b> |   |                |                                  |
| <b>H</b>                       | Blade Width                             | —              | 3251 mm (128 in.) (10 ft. 8 in.) |
| <b>I</b>                       | Blade Height                            | —              | 1126 mm (3 ft. 8 in.)            |
|                                | SAE Capacity                            | —              | 2.6 m <sup>3</sup> (3.4 cu. yd.) |
|                                | Weight                                  | —              | 714 kg (1,574 lb.)               |
|                                | C-Frame Assembly Weight (without blade) | —              | 512 kg (1,129 lb.)               |
| <b>J</b>                       | Blade Angle                             | —              | 22.9 deg.                        |
| <b>K</b>                       | Overall Width With Blade Angled         | —              | 3019 mm (9 ft. 11 in.)           |
| <b>L</b>                       | Blade Tilt                              | —              | 433 mm (17 in.)                  |
| <b>M</b>                       | Cut Reach                               | —              | 127 mm (5 in.)                   |
| <b>N</b>                       | Width Over Track                        | —              | 2464 mm (8 ft. 1 in.)            |
| <b>O</b>                       | Cast Reach                              | —              | 424 mm (16.7 in.)                |



| Rear Ripper  |                                  | 650 P-TIER XLT / 650 P-TIER LGP |
|--|----------------------------------|---------------------------------|
| Multi-shank parallelogram ripper with 5 pockets and 3 shanks |                                  |                                 |
|  | Weight                           | 981 kg (2,163 lb.)              |
| <b>P</b>   | Maximum Penetration              | 508 mm (20 in.)                 |
| <b>Q</b>   | Maximum Clearance Under Tip      | 508 mm (20 in.)                 |
| <b>R</b>   | Overall Length, Lowered Position | 1450 mm (57 in.) (4 ft. 9 in.)  |
| <b>R'</b>  | Overall Length, Raised Position  | 1015 mm (40 in.) (3 ft. 4 in.)  |
| <b>S</b>   | Overall Beam Width               | 1830 mm (6 ft. 0 in.)           |
| <b>T</b>   | Slope Angle (full raise)         | 40 deg.                         |
| <b>U</b>   | Ripping Width                    | 1670 mm (5 ft. 6 in.)           |
| <b>V</b>   | Distance Between Shanks          | 806 mm (32 in.)                 |



# Additional equipment

Key: ● Standard ▲ Optional or special

See your John Deere dealer for further information.

## 650 P Engine

- Turbocharged and air-to-air aftercooled
- Electronic control with automatic engine protection
- Eco mode
- Dual safety element dry-type air cleaner, evacuator valve
- Exhaust filter, under hood, with vertical stack
- Engine glow-plug starting system
- Automatic turbo cool-down timer
- Programmable auto-idle and auto shutdown
- Wet-sleeve cylinder liners
- Remote-mounted fuel filters with automatic electronic priming
- ▲ Engine coolant heater, 110 volts
- ▲ Rotary ejector engine air pre-cleaner
- ▲ Severe-duty fuel filter and water separator with heating element
- 100-amp alternator, cab and canopy

### Cooling

- Hydraulically driven cooling fan, variable-speed suction type
- ▲ Automatic, programmable reversing-fan-drive fan
- Engine cooling rated -37 deg. C (-34 deg. F)
- Enclosed safety fan guard (conforms to SAE J1308 and ISO3457)
- Perforated engine side shields
- Heavy-duty, trash-resistant radiator and high-ambient cooling package
- ▲ Heavy-duty perforated grille

## 650 P Powertrain

- Dual-path hydrostatic (HST) transmission
- Reverse-speed ratios (100%, 115%, and 130% presets)
- Remote diagnostic test ports
- Operator-selectable decelerator function (hydrostats and engine or hydrostats only)
- Wet, multi-disc parking brake
- Full power turns with infinitely variable track speed
- Single-lever steering with counter-rotate function
- HST (dynamic) service brakes
- Automatic cold-weather transmission warmup system
- Automatic transmission derating for exceeded system temperatures
- 2,000-hour vertical spin-on transmission filter

### Hydraulic System

- Open-center fixed-displacement hydraulic gear pump
- 3-spool manual control valve
- ▲ 3-spool electrohydraulic (EH) control valve
- ▲ 4-spool manual-control valve
- ▲ 4-spool EH control valve with single auxiliary
- 2,000-hour vertical spin-on hydraulic filter

## 650 P Hydraulic System (continued)

- ▲ Drive-through hydraulic pump for use with winch
- ▲ Electrohydraulics with EZGrade
- ▲ Slope Control system
- ▲ Slope Control With Dual Laser

### Overall Vehicle

- Front tow loop, bolt-on
- Reinforced engine and mid-frame bottom guards
- Integral transmission guard
- Vandal protection: Engine access door / Side tank access doors / Fuel tank / Instrument panel / Transmission reservoir / Hydraulic reservoir
- ▲ Fluid-sample valves
- ▲ Quick-service ports
- ▲ Forestry limb risers (sweeps)

### Attachments

- ▲ Counterweight, front, 109 kg (240 lb)
- ▲ Retrieval hitch with pin
- ▲ Extended rigid drawbar with pin for pull-type implements
- ▲ Drawbar, extended for winch (with or without fairlead)
- ▲ Rear ripper, parallelogram, 3 shank, 5 pocket
- ▲ Winch, John Deere 4000, power in/free spool out OR power out
- ▲ Winch, John Deere 4000, low speed, power in/free spool out OR power out
- ▲ 4-roller fairlead for winch
- ▲ Root-rake blade attachment

While general information, pictures, and descriptions are provided, some illustrations and text may include product options and accessories NOT AVAILABLE in all regions, and in some countries products and accessories may require modifications or additions to ensure compliance with the local regulations of those countries.

Net engine power is with standard equipment including air cleaner, exhaust system, alternator, and cooling fan at test conditions specified per ISO9249. Specifications and design subject to change without notice. Wherever applicable, specifications are in accordance with SAE standards. Except where otherwise noted, these specifications are based on a unit with standard equipment, rollover protective structure (ROPS), full fuel tank, and 79-kg (175 lb) operator.



# Additional equipment *(continued)*

Key: ● Standard ▲ Optional or special

See your John Deere dealer for further information.

## 650 P Undercarriage

- ▲ Front idler guards
- Rear chain guides
- ▲ Center chain guides
- Track adjuster relief valves
- Maximum Life undercarriage system with SC-2™ bushings
- ▲ Extended Life undercarriage with SC-2 bushings
- ▲ Heavy-duty sealed and lubricated undercarriage
- ▲ Full-length rock guards
- Double-flange rollers

## XLT LGP 650 P-Tier Shoes

- ▲ 457-mm (18 in.) moderate service
- ▲ ▲ 508-mm (20 in.) moderate service with clipped corners
- ▲ 610-mm (24 in.) moderate service
- 710-mm (28 in.) moderate service with clipped corners

## Canopy Cab Operator's Station / Electrical

- ● Retractable seat belts, 76 mm (3 in.) (conform to SAE J386)
- ● Accessories: Convex wide-angle interior rearview mirror / Thigh cushions (2) / Cup holders (2)
- ● Power port (cab includes power ports [2])
- ● Dash-mounted storage compartment
- Air conditioner and heater, 24,000 Btu
- Dome light

## Canopy Cab Operator's Station / Electrical *(continued)*

- Wipers, intermittent with washers: front window and left and right doors
- ▲ Rear wiper and washer
- ▲ Rearview camera
- ▲ Cab step (bolt on)
- ▲ Beacon light (roof mounted)
- ▲ Full screens
- ▲ Side screens
- ▲ Rear window screen
- ▲ Under-seat heater
- Lockable master electrical disconnect switch
- Multifunction/multi-language LCD monitor: Analog display (fuel level, coolant temperature, and engine oil pressure) / Digital display (engine rpm, charge pressure, hours, diesel particulate filter (DPF)-soot level, and transmission direction/speed range)
- ▲ Multifunction/multi-language 8-inch touch-screen LCD monitor: Digital display (fuel level, coolant temperature, engine oil pressure, engine rpm, charge pressure, hours, DPF-soot level, transmission direction/speed range, clock engine hours, and slope control (if equipped))
- Built-in diagnostics: Diagnostic-code details / Sensor values / Calibrations / Individual circuit tester

## Canopy Cab Operator's Station / Electrical *(continued)*

- Keyless start with multiple security modes
- Battery, dual, 24 volts
- ▲ External-mounted attachment mirror
- JDLink™ wireless communication system (available in specific countries; see your dealer for details)

## Trim Packages

- **Level 1:** Black exhaust stack, halogen lights (cab front [4] and cab rear [2]), AM/FM/Weather Band (WB) radio with USB and auxiliary port, standard seat (fabric with heavy-duty air suspension), and manual HVAC temperature adjustment
- ▲ **Level 2:** Chrome exhaust stack, LED lights (cab front [4], cab rear [4]), AM/FM/WB radio with Bluetooth®, remote-mounted USB, auxiliary port, and microphone, premium heated/ventilated seat (leather bolstered with heavy-duty air suspension), and automatic temperature controlled (ATC) HVAC system
- **Level 1:** Black exhaust stack and halogen lights (cab front [4] and cab rear [2])
- ▲ **Level 2:** Chrome exhaust stack and LED lights (cab front [4], cab rear [4])

While general information, pictures, and descriptions are provided, some illustrations and text may include product options and accessories NOT AVAILABLE in all regions, and in some countries products and accessories may require modifications or additions to ensure compliance with the local regulations of those countries.

Net engine power is with standard equipment including air cleaner, exhaust system, alternator, and cooling fan at test conditions specified per ISO9249. Specifications and design subject to change without notice. Wherever applicable, specifications are in accordance with SAE standards. Except where otherwise noted, these specifications are based on a unit with standard equipment, rollover protective structure (ROPS), full fuel tank, and 79-kg (175 lb.) operator.





  
MD650PAU (23-03)



**JOHN DEERE**



6801 McFarland Blvd West  
Northport, AL 35476  
205-339-0300

66 Industrial Park Drive  
Monroeville, AL 36460  
251-575-7111

4308 Water Trail  
Graysville, AL 35073  
205-988-4472

3540 Wetumpka Highway  
PO Box 210278, Montgomery, AL 36  
334-277-7260

2149 Highway 31 South  
Pelham, AL 35124  
205-988-4474

25135 One Aviation Way SW  
Madison, AL 35756  
256-233-1914

2255 Highway 21 South  
Oxford, AL 36203  
256-831-0921

[www.warriortractor.com](http://www.warriortractor.com)

BBR01CLCU4KM1401







## STANDARD WARRANTY FOR NEW JOHN DEERE CONSTRUCTION, COMPACT CONSTRUCTION (CCE), FORESTRY AND UTILITY PRODUCTS US & CANADA

- **Construction & Forestry Products:** 12 months/unlimited hours (whichever occurs first) Full Machine Standard Warranty
- **Compact Construction Equipment (CCE) Products:** 24 months or 2000 hours (whichever occurs first) Full Machine Standard Warranty
- **C&E Series Pull-Type Scrapers:** 6 months Full Machine Standard Warranty
- **DC & DE Pull-Type Scrapers:** (Model year 2024 and newer) 12 months Full Machine Standard Warranty; 36 months or 10,000 hours (whichever comes first) StructurALL Warranty
- **Scraper Tractors:** 24 Months or 2000 Hours (whichever occurs first) Full Machine Standard Warranty
- **Forestry Attachments:** 12 Months or 2000 Hours (whichever occurs first) Full Machine Standard Warranty

The "Standard Warranty" is part of the warranty protection package available from John Deere Construction & Forestry Company (John Deere Limited in Canada) ("John Deere") to purchasers of new John Deere products ("product").

**STANDARD Warranty** is John Deere's standard new product warranty, described in this document, provided at no additional charge to the purchaser.

**EXTENDED Warranty** is a separate repair contract made available by John Deere for purchasers who wish to complement their Standard Warranty coverage. Complete Extended Warranty details, including coverage options and limitations, are set forth in the Application for Extended Warranty, which is available from authorized John Deere dealers.

**STRUCTURALL Warranty** applies to certain structural components as listed below and as described in this document.

**FACTORY-INSTALLED UNDERCARRIAGE Warranty** applies to certain undercarriage components as listed below and as described in this document.

### A. STANDARD WARRANTY - GENERAL PROVISIONS

John Deere will repair or replace, at its option, any parts (except those specified below) of a new John Deere product that, as delivered to the original retail purchaser(s), are defective in material or workmanship. Performance of this warranty will be free of charge for parts and labor, except as otherwise stated below. Standard Warranty applies only to purchases from John Deere and authorized John Deere dealers and, except as otherwise provided in the next sentence and section L below, is extended only to the original retail purchaser of the product. Remaining Standard Warranty applicable to a used John Deere product is transferred to a subsequent purchaser of the product only if the subsequent purchaser requests a transfer from an authorized John Deere dealer before the product's Standard Warranty expires. Coverage begins on the date of delivery of the product to the original retail purchaser. For purposes of this warranty, a product that has been rented, used for demonstration purposes for 150 or more hours, or otherwise used prior to its original retail purchase has been "used" for the total duration of such use. Warranty statements required by law covering engine emissions-related parts and components are found on a separate written warranty certificate provided to the purchaser at the time of the original retail purchase.

### B. WHAT IS COVERED BY STANDARD WARRANTY

All parts of a new John Deere product (except those noted in Sections D and E below) are covered during the Standard Warranty period set out above.

### C. EXCLUSIVE REMEDY

The repair or replacement of covered parts or components that are defective, as provided in Sections A, B, D.2 and D.3 herein, shall be the purchaser's exclusive remedy for any defect in the product. However, if after repeated attempts such repair or replacement fails to correct the performance problem caused by the defect, the purchaser's sole remedy shall be a refund of the amount paid for the product (in exchange for a return of the product), excluding any transportation charges, license fees, taxes and insurance premiums, and less a reasonable allowance for use of



the product prior to its return. In no event will the dealer, John Deere or any company affiliated with John Deere be liable for any incidental or consequential damages, including but not limited to loss of profits, rental of substitute equipment or other commercial loss. Correction of defects in the manner provided above shall constitute fulfillment of all liabilities of the Dealer, John Deere, or any company affiliated with John Deere to the purchaser or any other person, whether based upon contract, tort, strict liability, or otherwise. This limitation does not apply to claims for personal injury.

#### **A. ITEMS COVERED SEPARATELY -**

1. **Standard Warranty** does not apply to batteries, radios, tires, cameras, or to Cummins, MTU or Detroit Diesel Engines installed in John Deere products, which are covered by separate written warranties.
2. **Factory-Installed Undercarriage Warranty** covers all non-rubberized factory-installed undercarriage wear components for 3 years or 4,000 hours from the date of delivery to the original retail purchaser, whichever occurs first (unless terminated earlier under Section F, below). For purposes of this warranty, a product that has been rented, used for demonstration purposes for 150 or more hours, or otherwise used prior to its original retail purchase has been "used" for the total duration of such use. In addition to the items listed in section E below, Factory-Installed Undercarriage Warranty does not cover: failures due to wear, machine application, maintenance practices, or improper machine configuration; removal and installation labor; transportation or hauling costs; unapproved parts; non-wear items; and rubberized undercarriage components such as rubber tracks. Warranty claims will be pro-rated based upon wear of the failed component and whether track shoe width is approved by John Deere. Factory-Installed Undercarriage Warranty does not apply to Scraper Tractors.
3. **StructurALL Warranty** for new John Deere Products (except Compact Excavators & Loaders, Skid-Steer Loaders, Compact Track Loaders, Scraper Tractors, Pull-Type Scrapers, and Forestry Attachments, which are not eligible for StructurALL Warranty) begins at the date of delivery to the original retail purchaser and ends (unless terminated earlier under Section F, below) after three (3) years, or 10,000 hours (whichever occurs first). For purposes of this warranty, a product that has been rented, used for demonstration purposes for 150 or more hours, or otherwise used prior to its original retail purchase has been "used" for the total duration of such use. **StructurALL Warranty applies only to the following structural components listed below as installed on the product at the time of original manufacture. If a particular component is not listed below it is not covered by StructurALL Warranty.**

Arm; Articulation Joint (incl. pins & bushings); Bin Frame; Boom; Carbody; C-Frame\*; Circle Frame; Coupler (John Deere built ONLY); Dipperstick; Draft Frame; Engine Frame; Equipment Frame; Grapple Arch and Grapple Boom; Loader Arm; Loader Frame; Mainframe; Moldboard Lift Arm; NeverGrease™ Pin Joints [Includes steering pin and bushing joints (standard equipment), roller elements (roller bearings) in bucket to boom joints and sliding elements (bushing) for boom and linkage joints (optional equipment)]; Rollover Protection Structure (ROPS); Side Frame; Swing Frame; Track Frame; Undercarriage Frame; X-Frame; Z-bar loader linkage (including bell crank and bucket driver link); Specialty booms and arms marketed as "heavy duty" by John Deere.

*Items Covered by StructurALL for Cut-to-Length Forestry Machines:* Front frame (welded assembly); Rear frame (welded assembly); Crane king post with basement; Middle joint frame; Cabin swing frame; Main Boom

**StructurALL Warranty does not apply to:**

1. Any product used primarily in extreme duty or severe duty applications such as but not limited to: demolition and wrecking, chemical plant (including fertilizer plants), salt mines, steel mill, land fill and transfer stations, scrap handling, scarifying and other applications that are similarly destructive or similarly heavy duty except specialty booms and arms as stated in Section D.3 above.
2. C-Frames on Crawlers equipped with root rakes or used in forestry applications unless equipped with an "extreme duty" reinforcement package.
3. Cut-to-Length Forestry Heads and Slash Bundler Units.
4. Crawlers equipped with optional side booms.
5. Cut-to-Length Forestry, Excavator, and Log Loader swing bearings.
6. Motor Graders equipped with front- or rear-mounted snow wings.



## **A. ITEMS NOT COVERED -**

John Deere is NOT responsible for the following:

1. Freight.
2. Adjustments to compensate for wear, for periodic maintenance or adjustments that result from normal wear and tear.
3. Damage caused by unapproved adjustments (electronic or mechanical) to machine or machine components outside of published specifications including but not limited to engine, hydraulic components and relief valves.
4. Program updates, calibrations, and pressure adjustments.
5. Additional Labor Time - Above Dealer Labor Rate.
6. Additional Cleaning - Above Dealer Labor Rate.
7. Rental Fees.
8. Depreciation or damage caused by normal wear or application, lack of reasonable and proper maintenance, failure to follow operating instructions, misuse, lack of proper protection during storage, vandalism, negligence, collision, expenses to seek reinstatement of warranty following theft or loss of Product, or other accidents.
9. Premiums charged for Overtime Labor.
10. Transportation to and from the dealership.
11. Travel time, mileage, or service calls by the dealer.
12. Non-John Deere components or modifications, Rotobec grapples, and attachments installed aftermarket.
13. Shop supplies and maintenance items such as, but not limited to: filters, fuels, oil, hydraulic fluid, lubricants, coolants, conditioners, shop towels, cleaners and degreasers.
14. Torn, cut, or worn hoses.
15. Wear items, such as, but not limited to: body liner, belts, blades, bulbs, lubricated joints (including pins and bushings), dry brakes, brake linings, dry clutch linings, saw blades, chains, skidder grapple shocks, color marking nozzles, and articulation bumpers.
16. Items such as cutting-edge parts, delimbing knives, bucket teeth and rubber track are not warranted for depreciation or damage caused by normal wear, lack of proper maintenance, misuse, failure to follow operating instructions, the elements or accident.
17. Any defect in a non-covered component, or damage to or failure of a covered component caused by a defect in a non-covered component.
18. Secondary damage which occurs from continued operation of a product after recognition of the occurrence of a failure.
19. Parts supplied by or repairs, maintenance or modifications performed by someone other than an authorized John Deere dealer, including any damage caused by such use of parts, repairs, maintenance, or modifications not performed by an authorized John Deere dealer.
20. The use of "track type" tire chains on Feller Bunchers and Skidders is an unapproved modification. Warranty will be void on these machines using "track type" tire chains.
21. Topping off fluids when fluid levels fall in the range between low and full
22. Parts/Kits not ordered on machine and installed aftermarket. These parts will be covered by any applicable parts warranty.
23. Attachments installed aftermarket – i.e., Winch not installed at factory.
24. Custom options installed outside the factory – i.e., G.R. Manufacturing option packages.
25. Used Products (except as otherwise provided in section L below).
26. Lost or stolen Products.

## **B. TERMINATION OF WARRANTY-**

John Deere is relieved of its obligations under Standard Warranty, StructurALL Warranty, Factory-Installed Undercarriage Warranty and/or Extended Warranty if:

1. The product is modified or altered in ways not approved by John Deere; or
2. Any unapproved or improperly sized attachment is installed on the product. Approval and attachment size shall be at John Deere's sole discretion. (Consult dealer prior to installing attachments or product modification).
3. The product is moved outside the US and/or Canada.



#### **A. PARTS REPLACED UNDER WARRANTY -**

Only new or remanufactured parts or components furnished or approved by John Deere, will be used if John Deere elects to repair the product. If any such part or component is defective in material or workmanship when installed in the product, John Deere will repair or replace, as it elects, such defective part or component, provided the defect is reported to an authorized John Deere dealer within 90 days of installation or before expiration of the applicable Standard Warranty, Factory-Installed Undercarriage Warranty and/or StructurALL Warranty whichever is later.

#### **B. TELEMATICS**

*NOTICE: Products may be equipped with telematics hardware and software ("Telematics") that transmit data to John Deere/ Dealer. Purchaser may deactivate Telematics at [www.jdlink.com](http://www.jdlink.com).*

Notwithstanding Purchaser's right, title or interest in the Products, Purchaser agrees that John Deere and Dealer (their affiliates, successors and assigns), without further notice to Purchaser have the right to:

1. Access, use, collect and disclose any data generated by, collected by, or stored in, Products or any hardware or devices interfacing with Products ("Machine Data");
2. Access Machine Data directly through data reporting devices integrated within, or attached to, Products, including Telematics ("Data Reporting Systems"); and
3. Update the Data Reporting Systems software from time to time. Machine Data will only be used in accordance with John Deere's Machine Data Policy, located at [www.JohnDeere.com/MachineDataPolicy](http://www.JohnDeere.com/MachineDataPolicy).

#### **C. OBTAINING WARRANTY SERVICE -**

To obtain warranty service, the purchaser must request warranty service from a John Deere dealer authorized to sell the product to be serviced. When making such a request, the purchaser must present evidence of the product's delivery date, make the product available at the dealer's place of business, and inform the dealer in what way the purchaser believes the product to be defective. Standard Warranty, Factory-Installed Undercarriage Warranty and/or StructurALL Warranty repairs may be made in the field if the purchaser and servicing dealer so desire. However, John Deere will not be responsible for any charges (such as dealer travel time, mileage or extra labor) that would not have been incurred had the product been repaired at the dealer's place of business.

#### **D. NO IMPLIED WARRANTY, CONDITIONS OR OTHER REPRESENTATION -**

Where permitted by law, neither John Deere nor any company affiliated with it makes any warranties, representations, conditions or promises, express or implied, as to the quality, performance, or freedom from defect of its products, other than those set forth in this document and **NO IMPLIED WARRANTY OF MERCHANTABILITY, CONDITIONS OR FITNESS IS MADE.**

#### **E. NO DEALER WARRANTY -**

The selling dealer makes no warranty of its own on any item covered by this warranty and makes no warranty on other items unless the dealer delivers to the purchaser a separate written warranty certificate specifically warranting the item. The dealer has no authority to make any representation or promise on behalf of John Deere, or to modify the terms or limitations of this warranty in any way.

#### **F. USED JOHN DEERE PRODUCTS ONLY -**

John Deere will transfer remaining Standard Warranty, Factory-Installed Undercarriage Warranty and/or StructurALL Warranty to the purchaser of a used John Deere construction and/or forestry product that has been used for less than the full warranty period provided at the product's original retail purchase. This transfer is not effective until change of ownership is registered by a John Deere dealer. **ALL THE TERMS, INCLUDING LIMITATIONS AND EXCLUSIONS, OF THE JOHN DEERE STANDARD WARRANTY, FACTORY-INSTALLED UNDERCARRIAGE WARRANTY, AND/OR STRUCTURALL WARRANTY ORIGINALLY PROVIDED FOR THE PRODUCT REMAIN IN EFFECT AND APPLICABLE.**





Company ID Number: 513478

## THE E-VERIFY PROGRAM FOR EMPLOYMENT VERIFICATION MEMORANDUM OF UNDERSTANDING

### ARTICLE I

#### PURPOSE AND AUTHORITY

This Memorandum of Understanding (MOU) sets forth the points of agreement between the Department of Homeland Security (DHS) and Warrior Tractor & Equipment Co., Inc. (Employer) regarding the Employer's participation in the Employment Eligibility Verification Program (E-Verify). This MOU explains certain features of the E-Verify program and enumerates specific responsibilities of DHS, the Social Security Administration (SSA), and the Employer. E-Verify is a program that electronically confirms an employee's eligibility to work in the United States after completion of the Employment Eligibility Verification Form (Form I-9). For covered government contractors, E-Verify is used to verify the employment eligibility of all newly hired employees and all existing employees assigned to Federal contracts or to verify the entire workforce if the contractor so chooses.

Authority for the E-Verify program is found in Title IV, Subtitle A, of the Illegal Immigration Reform and Immigrant Responsibility Act of 1996 (IIRIRA), Pub. L. 104-208, 110 Stat. 3009, as amended (8 U.S.C. § 1324a note). Authority for use of the E-Verify program by Federal contractors and subcontractors covered by the terms of Subpart 22.18, "Employment Eligibility Verification", of the Federal Acquisition Regulation (FAR) (hereinafter referred to in this MOU as a "Federal contractor with the FAR E-Verify clause") to verify the employment eligibility of certain employees working on Federal contracts is also found in Subpart 22.18 and in Executive Order 12989, as amended.

### ARTICLE II

#### FUNCTIONS TO BE PERFORMED

##### A. RESPONSIBILITIES OF SSA

1. SSA agrees to provide the Employer with available information that allows the Employer to confirm the accuracy of Social Security Numbers provided by all employees verified under this MOU and the employment authorization of U.S. citizens.
2. SSA agrees to provide to the Employer appropriate assistance with operational problems that may arise during the Employer's participation in the E-Verify program. SSA agrees to provide the Employer with names, titles, addresses, and telephone numbers of SSA representatives to be contacted during the E-Verify process.
3. SSA agrees to safeguard the information provided by the Employer through the E-Verify program procedures, and to limit access to such information, as is appropriate by law, to individuals responsible for the verification of Social Security Numbers and for evaluation of the E-Verify program or such other persons or entities who may be authorized by SSA as governed





Company ID Number: 513478

To be accepted as a participant in E-Verify, you should only sign the Employer's Section of the signature page. If you have any questions, contact E-Verify at 888-464-4218.

|  |                   |
|--|-------------------|
| <b>Employer Warrior Tractor &amp; Equipment Co., Inc.</b>      |                   |
| <b>Stanley McCracken</b>                                       |                   |
| Name (Please Type or Print)                                    | Title             |
| <b>Electronically Signed</b>                                   | <b>03/01/2012</b> |
| Signature  | Date              |
| <b>Department of Homeland Security – Verification Division</b> |                   |
| <b>USCIS Verification Division</b>                             |                   |
| Name (Please Type or Print)                                    | Title             |
| <b>Electronically Signed</b>                                   | <b>03/01/2012</b> |
| Signature  | Date              |

**Information Required for the E-Verify Program**

**Information relating to your Company:**

|                                 |                                       |
|---------------------------------|---------------------------------------|
| Company Name:                   | Warrior Tractor & Equipment Co., Inc. |
| Company Facility Address:       | 6801 McFarland Blvd                   |
|                                 | Northport, AL 35476                   |
| Company Alternate Address:      | P O Box 412                           |
|                                 | Northport, AL 35476                   |
| County or Parish:               | TUSCALOOSA                            |
| Employer Identification Number: | 630588737                             |



**Company ID Number: 513478**

|   |   |
|---|---|
| North American Industry Classification Systems Code:  | 423                                     |
| Administrator:  | Warrior Tractor and Equipment Co., Inc. |
| Number of Employees:  | 100 to 499                              |
| Number of Sites Verified for:   | 1                                       |
| <b>Are you verifying for more than 1 site? If yes, please provide the number of sites verified for in each State:</b> |   |
| <ul style="list-style-type: none"><li>• ALABAMA 1 site(s)</li></ul>   |   |

**Information relating to the Program Administrator(s) for your Company on policy questions or operational problems:**

|                   |                           |             |                  |
|-------------------|---------------------------|-------------|------------------|
| Name:             | Stanley N McCracken       |             |                  |
| Telephone Number: | (205) 339 - 0300          | Fax Number: | (205) 333 - 0101 |
| E-mail Address:   | wte024@warriortractor.com |             |                  |