

BID SUBMITTAL FORM
Alabama County Joint Bidding Program
BID ITEM – 130 HP HYDROSTATIC BULLDOZER – OPTION A

Company Name: Warrior Tractor & Equipment Company, Inc.

Address: 6801 McFarland Blvd, Northport, AL 35476

Bid Submitted by: David Schafer
(Name of company representative)

Title: Sales Manager E-mail address: dschafer@warriortractor.com

Phone: 205-339-0300 Fax: 205-333-0101

By submitting this bid, we agree:

Initials

The equipment model number identified below meets the bid specs for this bid item

DS

That the bid price will be honored for all counties for the period from **January 1, 2026 to June 30, 2026.**

DS

The equipment will be delivered at the bid price to all counties participating in the joint bid program

DS

The company representative listed above will be the contact person for purchasing this bid item under the joint bid program

DS

The bid is accompanied by a current catalog or model specification document for the model number identified below

DS

The bid is accompanied by a copy of the manufacturer's standard warranty as required in the bid specifications

DS

The bid includes the E-Verify documentation required by Alabama law

DS

We comply with, and if awarded the contract, we will comply with, the requirements of Section 41-16-50 and Sections 41-16-160 to -166, Code of Alabama 1975.

DS

If awarded the bid, a performance bond will be provided upon request

DS

The bid documents include the **Manufacturer's Suggested Retail Price Sheet (MSRP) for the Standard Machine**

DS

130 HP HYDROSTATIC BULLDOZER – OPTION A

Total Bid Price for Standard Machine: \$ 230,588.00
(Total Bid Price for Standard Machine Includes Freight Preparation, Delivery and Standard Warranty Costs)*

Freight Preparation and Delivery: \$ 7,950.00
(Included in Standard Machine Bid Price)

Manufacturer's Suggested Retail Price for Standard Machine: \$ 271,144.00

Equipment Model #: John Deere 700 P-Tier Dozer

Description: 130 HP Bulldozer

Signature of company representative submitting bid: David R. Schafer

Title: David Schafer

* **NOTE:** Award will be made based on the total cost of the **Standard Machine**. The total cost of the standard machine is to include freight preparation, delivery and standard warranty cost. Freight preparation and delivery will be excluded from the total bid price of the standard machine in determining the percentage discount for any available options.

BID SUBMITTAL FORM: OPTION COST SHEET 130 HP HYDROSTATIC BULLDOZER – OPTION A

By submitting this bid, we agree:

To offer any available options at the percent difference between the Manufacturer's Suggested Retail Price Sheet and the actual bid price on the Standard Machine*

(10%)

The bid documents include the Manufacturer's Suggested Retail Price Sheet (MSRP) with **any available Options** for the Standard Machine

(10%)

Equipment Model #: John Deere 700 P-Tier Dozer

Description: 130 HP Bulldozer

Signature of company representative submitting bid: David R. Schaefer

Title: Sales Manager

***Note:** The percent difference between the **Manufacturer's Suggested Retail Price Sheet (MSRP)** for the standard machine as specified by these **Bid Specifications** and the actual price bid by the vendor will be calculated to determine the percentage discount to be applied to any available options. The bid price of the freight preparation and delivery cost shall be excluded in determining the percentage discount to be applied to available options. Any individual county may choose to add any available option to the standard machine at the percentage discount at the time of purchase.

BID SPECIFICATIONS FOR 130 HP HYDROSTATIC BULLDOZER – OPTION A

GENERAL

These specifications shall be construed as the minimum acceptable standards for a 130 hp hydrostatic low ground pressure bulldozer. Should the manufacturer's current published data or specifications exceed these standards, the manufacturer's standards shall be considered minimum and shall be furnished. All integral parts not specifically mentioned in the scope of these specifications that are necessary to provide a complete working unit shall be furnished. Additionally, the machine offered for bid shall include all standard manufacturer's equipment. The bulldozers must be a new current production model and shall meet all EPA and other applicable standards at the time of manufacture.

The use of specific names and numbers in the specifications is not intended to restrict the bidder or any seller or manufacturer, but is intended solely for the purpose of indicating the type, size and quality of equipment considered best adapted to the uses of counties participating in this joint bid.

BID SUBMITTAL FORM

Each bidder must submit his or her bid on the Bid Submittal Form included in the invitation to bid package. All written warranties to be submitted shall be attached to the Bid Submittal Form.

BID PRICE

The price bid shall include all destination charges, delivery charges, title fees, rebates, and all other applicable costs and refunds.

MANUALS

Each unit shall be provided with one (1) copy of the operator's manual and one (1) copy of the current parts manual. Units will not be accepted for delivery until the manuals as outlined above are received by the purchaser.

REPLACEMENT PARTS AVAILABILITY

Parts must be available for 5 years or 7,500 hours of use for the piece of equipment bid. If replacement parts are not delivered within three (3) working days of an order being placed, the bidder will deliver an equivalent machine for the county to use at no cost to the county until such time as the parts are delivered to the county so it can affect repairs to its machine.

WARRANTY

Bidders shall submit a copy of the manufacturer's standard warranty. Warranty shall include service response time of maximum of 36 hours within notification by county.

Yes ☒ No ☐
Page#
or
Attachment ☒

ENGINE

Shall be a turbocharged diesel engine with a displacement of not less than **260 cubic inches**, capable of developing a minimum of **130 net** flywheel horsepower (SAE J1349).

Yes ☒ No ☐
Page # 6

Engine shall be manufactured by the equipment manufacturer.

Yes ☒ No ☐
Page # 6

WEIGHT

Operating weight with blade, operator, full fuel tank, and ROPS canopy shall not be less than **30,500 lbs.**

Yes ☒ No ☐
Page # 7

ELECTRICAL SYSTEM

Shall be equipped with a minimum 85-amp alternator.

Yes ☒ No ☐
Page # 7

TRANSMISSION

Shall be equipped with a hydrostatic type transmission.

Yes ☒ No ☐
Page # 6

STEERING

All steering functions must be able to be performed using one hand only.

Yes ☒ No ☐
Page # 6

UNDERCARRIAGE

The tractor shall be equipped with sealed and lubricated tracks. Minimum shoe width shall be **28 inches**. Track sag shall be hydraulically adjusted.

Yes ☒ No ☐
Page # 7

BLADE

The machine shall be equipped with a six-way (pat) blade with a minimum capacity of **4 cubic yards**.

Yes ☒ No ☐
Page # 8

VANDALISM PROTECTION

Machine shall be equipped with all standard and optional factory vandalism protection available for the machine bid.

Yes ☒ No ☐
Page # 10-11

SAFETY EQUIPMENT

Gauges and indicators shall be provided to monitor critical (fuel level, coolant temperature, powertrain oil temperature, and hydraulic oil temperature) operational systems of the machine and alert the operator when potential problems occur.

Yes x No ____
Page # 11

Rear view mirror; backup alarm.

Yes x No ____
Page # 11 & Attach

Heavy duty hinged radiator guard

Yes x No ____
Page # ATTACH

Crankcase guard

Yes x No ____
Page # ATTACH

Track center guiding guard

Yes x No ____
Page # ATTACH

Pre-cleaner guard **** Under Hood ****

Yes ____ No x
Page # ____

Front tow hooks

Yes x No ____
Page # 10-11

Heavy duty rear drawbar

Yes x No ____
Page # 11

Fire extinguisher

Yes x No ____
Page # ATTACH

Water separator

Yes x No ____
Page # 10 & ATTACH

700 P-Tier Construction Dozer



JOHN DEERE

05-Nov-2025

Code	Description	QTY	List Price
18A0T	700 P-Tier Construction Dozer	1	US\$267,077.00 USD

COMING SOON

Basic Factory Options - Required

Destination Code

0202	United States	No Added Cost
------	---------------	---------------

Operator's Manual and Language

0259	English	No Added Cost
------	---------	---------------

0263	French	No Added Cost
------	--------	---------------

0287	Spanish	No Added Cost
------	---------	---------------

Labels

0351	, Translated Text Labels	No Added Cost
------	--------------------------	---------------

Dozer Configuration

0401	XLT PAT (Extra Long Track Power-Angle-Tilt)	(US\$1,448.00)
------	---	----------------

0403	LGP PAT (Low Ground Pressure Power-Angle-Tilt)	No Added Cost
------	--	---------------

Trim Packages

0601	Canopy - Level 1 Trim	No Added Cost
------	-----------------------	---------------

Package includes:
Black exhaust
4 LED canopy-mounted lights
Vinyl seat

0602	Canopy - Level 2 Trim	US\$1,100.00
------	-----------------------	--------------

Package includes:
Chrome exhaust
8 LED canopy-mounted lights
Vinyl seat

0603	Cab - Level 1 Trim	US\$26,800.00
------	--------------------	---------------

Package includes:
Black exhaust
4 LED cab-mounted lights
Standard seat
Basic radio
1 12V power port

0604	Cab - Level 2 Trim	US\$29,200.00
------	--------------------	---------------

Package includes premium add-ons for operator comfort.
Chrome exhaust
8 LED cab-mounted lights
Premium seat
Premium radio
2 12V power ports
Automatic Temp Control (ATC)

ATC allows the operator to set a specified temperature, and the fan will adjust as needed.
The LED lights on Cab Trim 2 have a higher lumen count as well as doubling the amount above Trim 1.

0950	Less Vision System	No Added Cost
------	--------------------	---------------

0951	Rear Camera (Primary Display)	US\$1,500.00
------	-------------------------------	--------------

0953	Advanced Vision System	US\$5,333.00
------	------------------------	--------------

Future Release 1

110A	Future Release	No Added Cost
------	----------------	---------------

Radio

1200	Less Radio	No Added Cost
------	------------	---------------

1205	Basic Radio	No Added Cost
------	-------------	---------------

1210	Premium Radio	No Added Cost
------	---------------	---------------

Connectivity Hardware

183E	JDLink™	No Added Cost
------	---------	---------------

183Q	JDLink™ Satellite	US\$3,000.00
------	-------------------	--------------

Secondary Display

2300	Less Secondary Display	No Added Cost
------	------------------------	---------------

2302	12.8 In (325mm) Secondary Display - G5Plus	US\$4,920.00
------	--	--------------

Grade Control

2940	Less Grade Control	No Added Cost
------	--------------------	---------------

2942	SmartGrade™ Ready including 2D Grade Control	US\$10,667.00
------	--	---------------

Requires option 2302 G5Plus 12.8" Secondary Display

2950	3D SmartGrade™ with Topcon	US\$79,000.00
------	----------------------------	---------------

Requires option 2302 G5Plus 12.8" Secondary Display

2970	3D SmartGrade™ with Leica	US\$79,000.00
------	---------------------------	---------------

Requires option 2302 G5Plus 12.8" Secondary Display

Engine

4095	JD 6.8L - FT4/SV	No Added Cost
------	------------------	---------------

Engine Fan Drive

4101	Standard Hydraulic Fan Drive	No Added Cost
------	------------------------------	---------------

4102	Automatic Reversing Hydraulic Fan	US\$1,640.00
------	-----------------------------------	--------------

Track Shoes And Chain

5604	22 In (559 mm) Moderate Service Shoes - Heavy Duty Undercarriage	(US\$7,080.00)
5605	24 In (610 mm) Moderate Service Shoes - Heavy Duty Undercarriage	(US\$7,012.00)
5609	30 In (760 mm) Moderate Service Shoes - Heavy Duty Undercarriage	(US\$6,291.00)
5704	22 In (559 mm) Moderate Service Shoes - Extended Life Undercarriage	(US\$1,418.00)
5705	24 In (610 mm) Moderate Service Shoes - Extended Life Undercarriage	(US\$1,015.00)
5709	30 In (760 mm) Moderate Service Shoes - Extended Life Undercarriage	No Added Cost
5804	22 In (559 mm) Moderate Service Shoes - Maximum Life Undercarriage	US\$826.00
5805	24 In (610 mm) Moderate Service Shoes - Maximum Life Undercarriage	US\$1,527.00
5807	30 In (760 mm) Moderate Service Shoes - Maximum Life Undercarriage	US\$2,282.00

Hydraulic Controls

7028	3 Function Electro-Hydraulics (EH) for Power-Angle-Tilt (PAT)	No Added Cost
------	---	---------------

7030	4 Function Electro-Hydraulics (EH) for Power-Angle-Tilt (PAT)	US\$1,565.00
------	---	--------------

HYDRAULIC PUMP

7151	Standard Hydraulic Pump	No Added Cost
------	-------------------------	---------------

7152	Thru-Drive Hydraulic Pump for use with Direct Drive (PTO) Winch	US\$576.00
------	---	------------

Dozer Blade

7617	PAT Blade - 121 In (3078 mm)	(US\$1,825.00)
------	------------------------------	----------------

7618	PAT Blade - 127 In (3231 mm)	(US\$1,575.00)
------	------------------------------	----------------

7619	PAT Blade - 133 In (3383 mm)	(US\$564.00)
------	------------------------------	--------------

7620	PAT Blade - 145 In (3688 mm)	No Added Cost
------	------------------------------	---------------

Basic Factory Options - Optional

Packages-Order As Desired

8179	Quick Fluid Service	US\$1,000.00
------	---------------------	--------------

8065	Cold Weather Starting Package	US\$80.00
------	-------------------------------	-----------

Coolant heater, electric

8500	Cold Weather Package	US\$90.00
------	----------------------	-----------

Coolant heater, electric and upgrade to Hydrau XR Oil (factory fill, all-season temperatures ranging from -40C to 40C / -40F to 104F)

Operator's Station-Order As Desired

8030	Fire Extinguisher Bracket	US\$76.00
------	---------------------------	-----------

8097	External Mounted Rear Attachments Mirror	US\$85.00
------	--	-----------

Engine - Order As Desired

8049	Engine Air PreCleaner	US\$240.00
------	-----------------------	------------

8124	Fuel Filter, Severe-Duty	US\$600.00
------	--------------------------	------------

Tracks - Order As Desired

8114	Full Length Rock Guards - PAT	US\$4,000.00
------	-------------------------------	--------------

Attachments - Order As Desired

8026	4000 Winch Fairlead, Four Roller	US\$6,400.00
------	----------------------------------	--------------

8092	Extended Rigid Drawbar w/ Single Rear Counterweight	US\$6,300.00
8094	Extended Rigid Drawbar with Pin	US\$2,000.00
8129	Heavy Duty Parallelogram Ripper with 5 Shank Pockets and (3) Shank/Teeth	US\$25,500.00
8162	Model 4000 Standard Speed Winch - Power In, Freespool Out	US\$23,500.00
8163	Model 4000 Standard Speed Winch - Power In, Power Out	US\$26,000.00
8197	Retrieval Hitch for use w/o Rear Counterweight	US\$800.00
8199	Retrieval Hitch w/ Single Rear Counterweight	US\$4,400.00
8203	Rigid Drawbar for use with Winch	US\$790.00
Mainframe/Structures - Order As Desired		
8066	Condenser Guard	US\$2,000.00
8116	Full Screens for Cab	US\$9,200.00

8126	Heavy Duty Grille Frame	US\$590.00
------	-------------------------	------------

8152	LGP Final Drive Guard	US\$900.00
------	-----------------------	------------

8155	Limb Risers (Sweeps)	US\$5,500.00
------	----------------------	--------------

8187	Side Screens for Cab	US\$2,750.00
------	----------------------	--------------

8188	Rear Screen for Cab	US\$2,500.00
------	---------------------	--------------

8189	Rear Screen for Canopy	US\$1,515.00
------	------------------------	--------------

Electrical - Order As Desired

8071	Beacon Light	US\$400.00
------	--------------	------------

8088	Engine Compartment Light	US\$125.00
------	--------------------------	------------

Powertrain - Order As Desired

8104	Fluid Sampling Ports	US\$200.00
------	----------------------	------------

Miscellaneous - Order As Desired

8039	Non-Export Rust Preventive Coating	US\$162.00
------	------------------------------------	------------

Field Installed Attachments - Optional

Miscellaneous

BYT12396	HVAC Repair Field Kit	US\$3,120.00
----------	-----------------------	--------------

Overall Vehicle

BYT11205	Engine Air Precleaner - Rotary - Field Kit	US\$515.00
----------	--	------------

Guards

BYT11738	Limb Risers (Sweeps) - Field Kit	US\$4,880.00
----------	----------------------------------	--------------

BYT12272	Rear Tank Fender Guard	US\$3,236.00
----------	------------------------	--------------

BYT13317	Forestry Screens (All) - Field Kit	US\$11,290.00
----------	------------------------------------	---------------

BYT11936	Rear Screen for Cab	US\$2,531.00
----------	---------------------	--------------

BYT11937	Rear Screen for Canopy	US\$966.00
----------	------------------------	------------

BYT13316	Condenser Guard Only - Field Kit	US\$1,570.00
----------	----------------------------------	--------------

Powertrain & Cooling

BYT12997	Quick Service - Field Kit	US\$770.00
----------	---------------------------	------------

BYT12996	Reversing Fan - Field Kit	US\$1,170.00
----------	---------------------------	--------------

Operator Environment

BYT14149	Canopy Rear View Camera Field Kit	US\$1,500.00
----------	-----------------------------------	--------------

BYT14154	Cab Rear View Camera Field Kit	US\$1,500.00
----------	--------------------------------	--------------

Frame Attachment

AT222829	Extended Drawbar, 4000 Winch With Pin and Hardware	US\$1,002.00
----------	--	--------------

BYT11009	Front Counterweight, 317 Lb. (144 Kg) - Field Kit	US\$1,535.00
----------	---	--------------

BYT11049	Heavy Duty Parallelogram Ripper with 5 Shank Pockets and (3) Shank/Teeth - Field Kit	US\$24,300.00
----------	--	---------------

Winches

AT175529	Fairlead, 4000 Winch Four Roller	US\$4,717.00
----------	----------------------------------	--------------

BYT12999	Rear Aux for use with Rear Winch Field Kit	US\$565.00
----------	--	------------

BYT12998	EH Control & Plumbing for Rear Mechanical Winch - Power In/Power Out - Field Kit	US\$2,777.00
----------	--	--------------

BYT11899	EH Control & Plumbing for Rear Mechanical Winch - Power In/Freespool Out - Field Kit	US\$1,826.00
----------	--	--------------

PACCAR Winch Div		
AT523203	H50 HYSTAT Winch	US\$37,130.00

Hydraulics		
BYT11900	Auxiliary Valve Section - Field Kit	US\$1,863.00

BYT11921	Auxiliary Plumbing for Rear Attachment - Field Kit	US\$293.00
----------	--	------------

Manufacturer's Suggested List Price shown. Retail prices may vary by dealer. Unless stated otherwise, taxes, freight, setup, delivery and other dealer specific charges not included in the pricing. Options/items noted with anything other than price will have additional costs. Pricing, availability, and specifications subject to change without notice. Special program pricing may be available on certain models. See dealer for details. Prices are shown in USD unless otherwise noted.



STANDARD WARRANTY FOR NEW JOHN DEERE CONSTRUCTION, COMPACT CONSTRUCTION (CCE), FORESTRY AND UTILITY PRODUCTS US & CANADA

- **Construction & Forestry Products:** 12 months/unlimited hours (whichever occurs first) Full Machine Standard Warranty
- **Compact Construction Equipment (CCE) Products:** 24 months or 2000 hours (whichever occurs first) Full Machine Standard Warranty
- **C&E Series Pull-Type Scrapers:** 6 months Full Machine Standard Warranty
- **DC & DE Pull-Type Scrapers:** (Model year 2024 and newer) 12 months Full Machine Standard Warranty; 36 months or 10,000 hours (whichever comes first) StructurALL Warranty
- **Scraper Tractors:** 24 Months or 2000 Hours (whichever occurs first) Full Machine Standard Warranty
- **Forestry Attachments:** 12 Months or 2000 Hours (whichever occurs first) Full Machine Standard Warranty

The "Standard Warranty" is part of the warranty protection package available from John Deere Construction & Forestry Company (John Deere Limited in Canada) ("John Deere") to purchasers of new John Deere products ("product"):

STANDARD Warranty is John Deere's standard new product warranty, described in this document, provided at no additional charge to the purchaser.

EXTENDED Warranty is a separate repair contract made available by John Deere for purchasers who wish to complement their Standard Warranty coverage. Complete Extended Warranty details, including coverage options and limitations, are set forth in the Application for Extended Warranty, which is available from authorized John Deere dealers.

STRUCTURALL Warranty applies to certain structural components as listed below and as described in this document.

FACTORY-INSTALLED UNDERCARRIAGE Warranty applies to certain undercarriage components as listed below and as described in this document.

A. STANDARD WARRANTY - GENERAL PROVISIONS

John Deere will repair or replace, at its option, any parts (except those specified below) of a new John Deere product that, as delivered to the original retail purchaser(s), are defective in material or workmanship. Performance of this warranty will be free of charge for parts and labor, except as otherwise stated below. Standard Warranty applies only to purchases from John Deere and authorized John Deere dealers and, except as otherwise provided in the next sentence and section L below, is extended only to the original retail purchaser of the product. Remaining Standard Warranty applicable to a used John Deere product is transferred to a subsequent purchaser of the product only if the subsequent purchaser requests a transfer from an authorized John Deere dealer before the product's Standard Warranty expires. Coverage begins on the date of delivery of the product to the original retail purchaser. For purposes of this warranty, a product that has been rented, used for demonstration purposes for 150 or more hours, or otherwise used prior to its original retail purchase has been "used" for the total duration of such use. Warranty statements required by law covering engine emissions-related parts and components are found on a separate written warranty certificate provided to the purchaser at the time of the original retail purchase.

B. WHAT IS COVERED BY STANDARD WARRANTY

All parts of a new John Deere product (except those noted in Sections D and E below) are covered during the Standard Warranty period set out above.

C. EXCLUSIVE REMEDY

The repair or replacement of covered parts or components that are defective, as provided in Sections A, B, D.2 and D.3 herein, shall be the purchaser's exclusive remedy for any defect in the product. However, if after repeated attempts such repair or replacement fails to correct the performance problem caused by the defect, the purchaser's sole remedy shall be a refund of the amount paid for the product (in exchange for a return of the product), excluding any transportation charges, license fees, taxes and insurance premiums, and less a reasonable allowance for use of

the product prior to its return. In no event will the dealer, John Deere or any company affiliated with John Deere be liable for any incidental or consequential damages, including but not limited to loss of profits, rental of substitute equipment or other commercial loss. Correction of defects in the manner provided above shall constitute fulfillment of all liabilities of the Dealer, John Deere, or any company affiliated with John Deere to the purchaser or any other person, whether based upon contract, tort, strict liability, or otherwise. This limitation does not apply to claims for personal injury.

A. ITEMS COVERED SEPARATELY -

1. Standard Warranty does not apply to batteries, radios, tires, cameras, or to Cummins, MTU or Detroit Diesel Engines installed in John Deere products, which are covered by separate written warranties.
2. Factory-Installed Undercarriage Warranty covers all non-rubberized factory-installed undercarriage wear components for 3 years or 4,000 hours from the date of delivery to the original retail purchaser, whichever occurs first (unless terminated earlier under Section F, below). For purposes of this warranty, a product that has been rented, used for demonstration purposes for 150 or more hours, or otherwise used prior to its original retail purchase has been "used" for the total duration of such use. In addition to the items listed in section E below, Factory-Installed Undercarriage Warranty does not cover: failures due to wear, machine application, maintenance practices, or improper machine configuration; removal and installation labor; transportation or hauling costs; unapproved parts; non-wear items; and rubberized undercarriage components such as rubber tracks. Warranty claims will be pro-rated based upon wear of the failed component and whether track shoe width is approved by John Deere. Factory-Installed Undercarriage Warranty does not apply to Scraper Tractors.
3. StructurALL Warranty for new John Deere Products (except Compact Excavators & Loaders, Skid-Steer Loaders, Compact Track Loaders, Scraper Tractors, Pull-Type Scrapers, and Forestry Attachments, which are not eligible for StructurALL Warranty) begins at the date of delivery to the original retail purchaser and ends (unless terminated earlier under Section F, below) after three (3) years, or 10,000 hours (whichever occurs first). For purposes of this warranty, a product that has been rented, used for demonstration purposes for 150 or more hours, or otherwise used prior to its original retail purchase has been "used" for the total duration of such use. **StructurALL Warranty applies only to the following structural components listed below as installed on the product at the time of original manufacture. If a particular component is not listed below it is not covered by StructurALL Warranty.**

Arm; Articulation Joint (incl. pins & bushings); Bin Frame; Boom; Carbody; C-Frame*; Circle Frame; Coupler (John Deere built ONLY); Dipperstick; Draft Frame; Engine Frame; Equipment Frame; Grapple Arch and Grapple Boom; Loader Arm; Loader Frame; Mainframe; Moldboard Lift Arm; NeverGrease™ Pin Joints [Includes steering pin and bushing joints (standard equipment), roller elements (roller bearings) in bucket to boom joints and sliding elements (bushing) for boom and linkage joints (optional equipment)]; Rollover Protection Structure (ROPS); Side Frame; Swing Frame; Track Frame; Undercarriage Frame; X-Frame; Z-bar loader linkage (including bell crank and bucket driver link); Specialty booms and arms marketed as "heavy duty" by John Deere.

Items Covered by StructurALL for Cut-to-Length Forestry Machines: Front frame (welded assembly); Rear frame (welded assembly); Crane king post with basement; Middle joint frame; Cabin swing frame; Main Boom

StructurALL Warranty does not apply to:

1. Any product used primarily in extreme duty or severe duty applications such as but not limited to: demolition and wrecking, chemical plant (including fertilizer plants), salt mines, steel mill, land fill and transfer stations, scrap handling, scarifying and other applications that are similarly destructive or similarly heavy duty except specialty booms and arms as stated in Section D.3 above.
2. C-Frames on Crawlers equipped with root rakes or used in forestry applications unless equipped with an "extreme duty" reinforcement package.
3. Cut-to-Length Forestry Heads and Slash Bundler Units.
4. Crawlers equipped with optional side booms.
5. Cut-to-Length Forestry, Excavator, and Log Loader swing bearings.
6. Motor Graders equipped with front- or rear-mounted snow wings.

A. ITEMS NOT COVERED -

John Deere is NOT responsible for the following:

1. Freight.
2. Adjustments to compensate for wear, for periodic maintenance or adjustments that result from normal wear and tear.
3. Damage caused by unapproved adjustments (electronic or mechanical) to machine or machine components outside of published specifications including but not limited to engine, hydraulic components and relief valves.
4. Program updates, calibrations, and pressure adjustments.
5. Additional Labor Time - Above Dealer Labor Rate.
6. Additional Cleaning - Above Dealer Labor Rate.
7. Rental Fees.
8. Depreciation or damage caused by normal wear or application, lack of reasonable and proper maintenance, failure to follow operating instructions, misuse, lack of proper protection during storage, vandalism, negligence, collision, expenses to seek reinstatement of warranty following theft or loss of Product, or other accidents.
9. Premiums charged for Overtime Labor.
10. Transportation to and from the dealership.
11. Travel time, mileage, or service calls by the dealer.
12. Non-John Deere components or modifications, Rotobec grapples, and attachments installed aftermarket.
13. Shop supplies and maintenance items such as, but not limited to: filters, fuels, oil, hydraulic fluid, lubricants, coolants, conditioners, shop towels, cleaners and degreasers.
14. Torn, cut, or worn hoses.
15. Wear items, such as, but not limited to: body liner, belts, blades, bulbs, lubricated joints (including pins and bushings), dry brakes, brake linings, dry clutch linings, saw blades, chains, skidder grapple shocks, color marking nozzles, and articulation bumpers.
16. Items such as cutting-edge parts, delimbing knives, bucket teeth and rubber track are not warranted for depreciation or damage caused by normal wear, lack of proper maintenance, misuse, failure to follow operating instructions, the elements or accident.
17. Any defect in a non-covered component, or damage to or failure of a covered component caused by a defect in a non-covered component.
18. Secondary damage which occurs from continued operation of a product after recognition of the occurrence of a failure.
19. Parts supplied by or repairs, maintenance or modifications performed by someone other than an authorized John Deere dealer, including any damage caused by such use of parts, repairs, maintenance, or modifications not performed by an authorized John Deere dealer.
20. The use of "track type" tire chains on Feller Bunchers and Skidders is an unapproved modification. Warranty will be void on these machines using "track type" tire chains.
21. Topping off fluids when fluid levels fall in the range between low and full
22. Parts/Kits not ordered on machine and installed aftermarket. These parts will be covered by any applicable parts warranty.
23. Attachments installed aftermarket – i.e., Winch not installed at factory.
24. Custom options installed outside the factory – i.e., G.R. Manufacturing option packages.
25. Used Products (except as otherwise provided in section L below).
26. Lost or stolen Products.

B. TERMINATION OF WARRANTY-

John Deere is relieved of its obligations under Standard Warranty, StructurALL Warranty, Factory-Installed Undercarriage Warranty and/or Extended Warranty if:

1. The product is modified or altered in ways not approved by John Deere; or
2. Any unapproved or improperly sized attachment is installed on the product. Approval and attachment size shall be at John Deere's sole discretion. (Consult dealer prior to installing attachments or product modification).
3. The product is moved outside the US and/or Canada.

A. PARTS REPLACED UNDER WARRANTY -

Only new or remanufactured parts or components furnished or approved by John Deere, will be used if John Deere elects to repair the product. If any such part or component is defective in material or workmanship when installed in the product, John Deere will repair or replace, as it elects, such defective part or component, provided the defect is reported to an authorized John Deere dealer within 90 days of installation or before expiration of the applicable Standard Warranty, Factory-Installed Undercarriage Warranty and/or StructurALL Warranty whichever is later.

B. TELEMATICS

NOTICE: Products may be equipped with telematics hardware and software ("Telematics") that transmit data to John Deere/ Dealer. Purchaser may deactivate Telematics at www.jdlink.com.

Notwithstanding Purchaser's right, title or interest in the Products, Purchaser agrees that John Deere and Dealer (their affiliates, successors and assigns), without further notice to Purchaser have the right to:

1. Access, use, collect and disclose any data generated by, collected by, or stored in, Products or any hardware or devices interfacing with Products ("Machine Data");
2. Access Machine Data directly through data reporting devices integrated within, or attached to, Products, including Telematics ("Data Reporting Systems"); and
3. Update the Data Reporting Systems software from time to time. Machine Data will only be used in accordance with John Deere's Machine Data Policy, located at www.JohnDeere.com/MachineDataPolicy.

C. OBTAINING WARRANTY SERVICE -

To obtain warranty service, the purchaser must request warranty service from a John Deere dealer authorized to sell the product to be serviced. When making such a request, the purchaser must present evidence of the product's delivery date, make the product available at the dealer's place of business, and inform the dealer in what way the purchaser believes the product to be defective. Standard Warranty, Factory-Installed Undercarriage Warranty and/or StructurALL Warranty repairs may be made in the field if the purchaser and servicing dealer so desire. However, John Deere will not be responsible for any charges (such as dealer travel time, mileage or extra labor) that would not have been incurred had the product been repaired at the dealer's place of business.

D. NO IMPLIED WARRANTY, CONDITIONS OR OTHER REPRESENTATION -

Where permitted by law, neither John Deere nor any company affiliated with it makes any warranties, representations, conditions or promises, express or implied, as to the quality, performance, or freedom from defect of its products, other than those set forth in this document and **NO IMPLIED WARRANTY OF MERCHANTABILITY, CONDITIONS OR FITNESS IS MADE.**

E. NO DEALER WARRANTY -

The selling dealer makes no warranty of its own on any item covered by this warranty and makes no warranty on other items unless the dealer delivers to the purchaser a separate written warranty certificate specifically warranting the item. The dealer has no authority to make any representation or promise on behalf of John Deere, or to modify the terms or limitations of this warranty in any way.

F. USED JOHN DEERE PRODUCTS ONLY -

John Deere will transfer remaining Standard Warranty, Factory-Installed Undercarriage Warranty and/or StructurALL Warranty to the purchaser of a used John Deere construction and/or forestry product that has been used for less than the full warranty period provided at the product's original retail purchase. This transfer is not effective until change of ownership is registered by a John Deere dealer. **ALL THE TERMS, INCLUDING LIMITATIONS AND EXCLUSIONS, OF THE JOHN DEERE STANDARD WARRANTY, FACTORY-INSTALLED UNDERCARRIAGE WARRANTY, AND/OR STRUCTURALL WARRANTY ORIGINALLY PROVIDED FOR THE PRODUCT REMAIN IN EFFECT AND APPLICABLE.**

700 P

Dozer



JOHN DEERE



PACKED TO POWER YOUR PRODUCTIVITY

When you work in site development, roadbuilding, or aggregates, you need to get the most from your equipment and your operators. We've relied on input from real-world customers like you to design and manufacture our dozers for nearly 75 years. The John Deere 700 P-Tier features some of your best ideas, like generous horsepower, reliable systems and components, and flexible grade-control solutions that can be easily and economically upgraded. And because retaining skilled and productive operators is a priority, we've made the operating experience a main attraction of what the 700 P-Tier Dozer has to offer.

Take control in comfort

Designed to elevate operator comfort, the next-generation cab features ergonomic controls arranged to minimize hand and arm movements, advanced touchscreen displays with configurable settings, and optional automatic temperature control (ATC) system. Both the standard deluxe fabric-covered seat and optional premium leather-accented heated/ventilated seat are angled to maximize comfort when making ripping passes.

Put progress on display

Standard on electrohydraulic configurations, eight-inch touchscreen primary display reveals machine health and configurable settings plus rearview (backup) camera (if equipped). Secondary 12.8-inch display for navigating the grade-control interface is added when the machine is outfitted with SmartGrade™ Ready Including 2D Grade Control.

Be aware of what's there

To enhance awareness for confident navigation of busy work areas, optional rearview (backup) camera helps the operator see what's behind the dozer on the in-cab monitor. Optional Advanced Vision System (AVS) includes two digital cameras mounted on the exterior left and right cab-light brackets plus an additional camera mounted to the front grille that integrate with the rearview (backup) camera for a single display on a dedicated in-cab monitor.

Lead the way

Unlike many competitive machines featuring four-cylinder engines, the 700 P-Tier runs a fuel-efficient six-cylinder 6.8L engine that delivers the highest horsepower in its size class. And it also has the largest blade capacity in its size class.





GRADE-MANAGEMENT SOLUTIONS

Our suite of factory-integrated grade-management technologies including standard EZ Grade and optional SmartGrade Ready Including 2D Grade Control, SmartGrade with Topcon, and SmartGrade with Leica simplify difficult grading tasks. These intuitive offerings are easy for operators of any experience level to master. All technology solutions are fully supported by the John Deere dealer network and can be efficiently upgraded as your operation evolves:

- **EZ Grade** aids operators in manually grading smooth finish passes by making small blade corrections automatically.
- **SmartGrade Ready Including 2D Grade Control** includes entry-level slope-control solutions and plug-and-play laser. Slope control assists in grading and maintaining flat, smooth, and sloping surfaces. Operators can view and set blade slope while the system automatically controls the blade to a desired slope. SmartGrade Ready also recognizes plugged-in laser receivers and activates the plug-and-play laser that enables operators to automatically control the blade to a specific slope and elevation using a rotating laser.
- Fully integrated **SmartGrade** features next-generation components and integration, enabling the highest levels of productivity and grading performance. SmartGrade is available in your choice of Topcon or Leica packages. SmartGrade enhancements for jobsites requiring tighter tolerances or with limited GNSS coverage include capabilities for integrated total-station control.
- **Electrohydraulic (EH) controls** make it easy to add the grade-control system of your choice.



GRADE-MANAGEMENT OPTIONS

**STREAMLINE GRADING
TASKS & LEARNING CURVES**

Turn, turn, turn

Independent track control speeds up or slows down each side, for smooth, full-power turns. Automatic power boost helps carry big blade loads through turns.

All about the blade

Integrated welded-on spill sheet on the 700 P-Tier blade helps reduce damage caused by material spillage behind the blade.

Hydrostatic dynamics

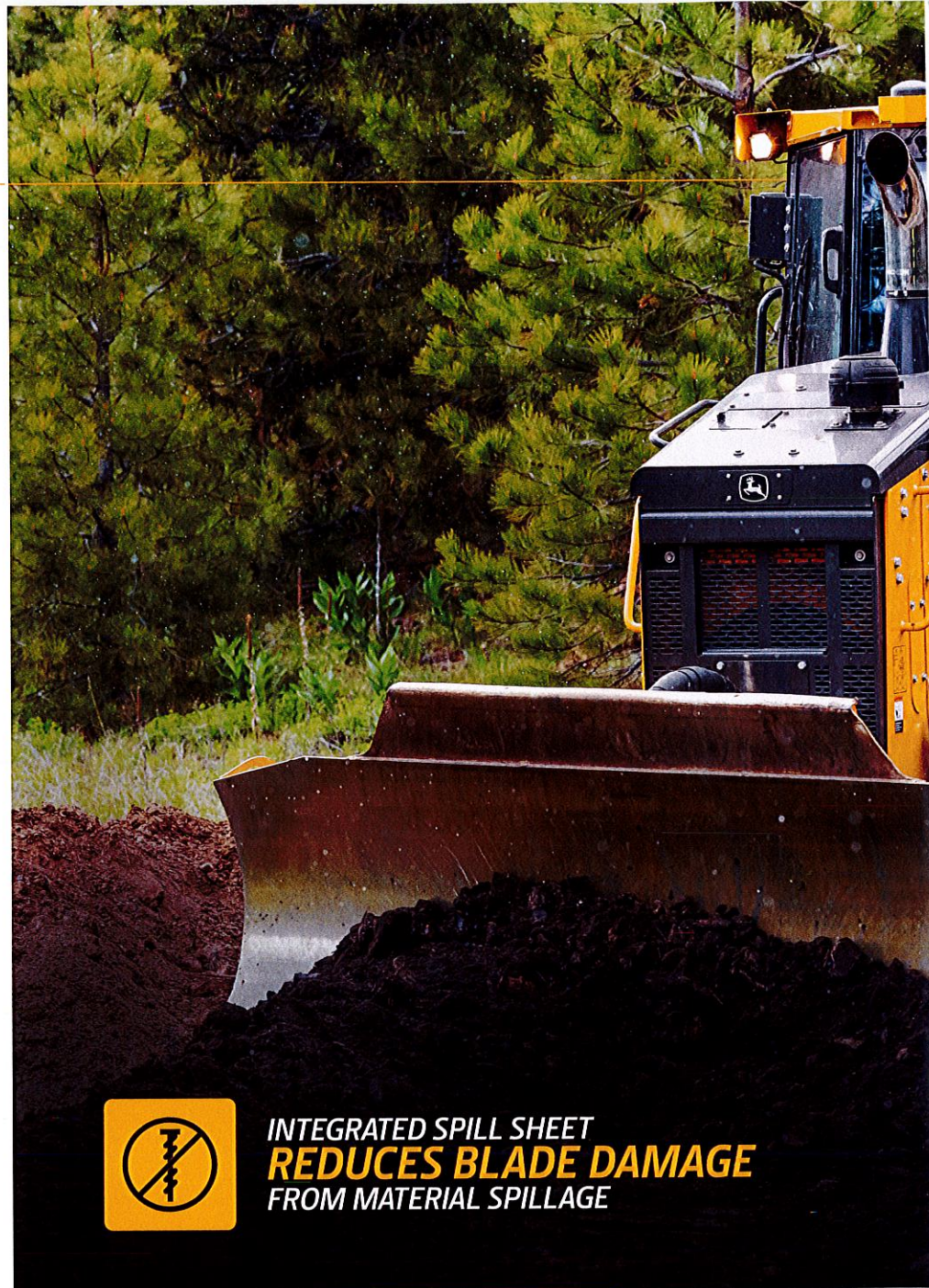
The John Deere hydrostatic system simplifies operation and redefines durability. Each track has its own independent hydrostatic pump and motor, and the blade and ripper functions have their own independent hydraulic pump, allowing both transmission and hydraulic operating characteristics to be tailored to individual preference without sacrificing hydraulic speed. And heavy loads can be carried through turns and counter-rotations while the dozer is in gear or neutral.

Tough to take it on

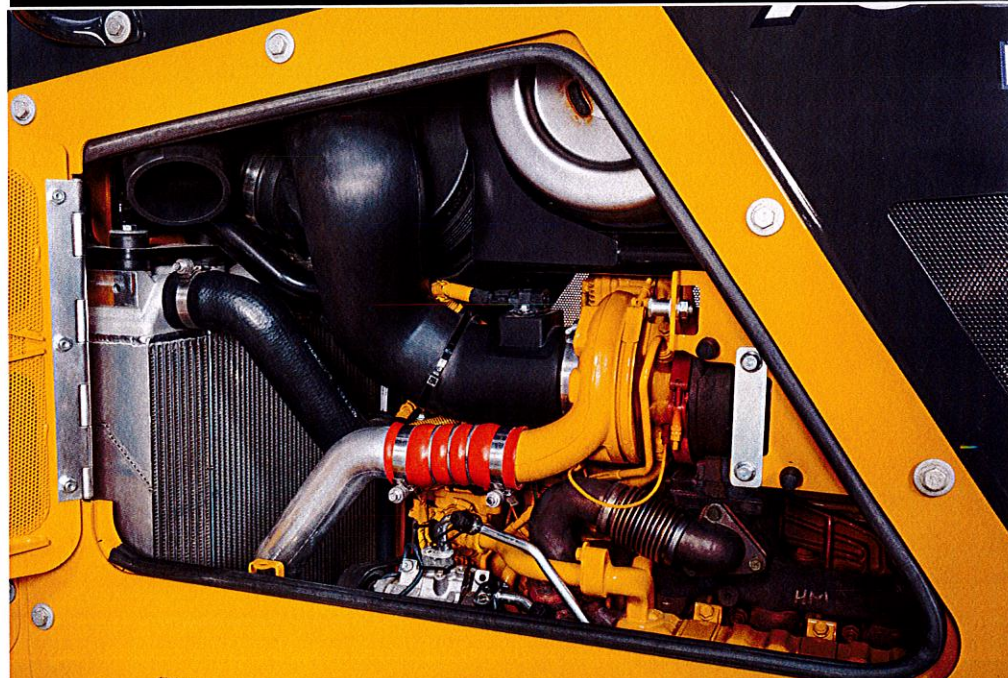
The 700 P-Tier retains the thick sheet metal and heavy-duty mainframe of its proven 700L predecessor. A durable heavy-duty undercarriage comes standard. Or opt for Extended Life undercarriage with SC-2™-treated bushings, a proven parts coating that delivers up to twice the wear life. Maximum Life undercarriage, with larger components and stronger seals, is also available.

At your service

Simplified routing of the electrical and hydraulic systems is designed for reliability and ease of maintenance. Enlarged service doors provide quick access to conveniently located checkpoints and filters. Hydraulic and hydrostatic oil-change intervals extended from 2,000 to 4,000 hours help further minimize maintenance and expense.



**INTEGRATED SPILL SHEET
REDUCES BLADE DAMAGE
FROM MATERIAL SPILLAGE**



700 P-TIER DOZER



Clear the way

Factory-installed limb risers and screens allow you to put this versatile dozer to work in forestry, land-clearing, and other challenging applications.

Connected machines

John Deere construction equipment comes with in-base connectivity — free from subscriptions or annual renewals. Analyze critical machine data, track utilization, review diagnostic alerts, and more from **the John Deere Operations Center™**. The Operations Center also enables John Deere Connected Support™, which uses data from thousands of connected machines to proactively address issues before they arise. With your approval, your dealer can also remotely monitor machine health, diagnose problems, and even update machine software without a trip to the jobsite.*

* Availability varies by region and product. Options not available in every country.



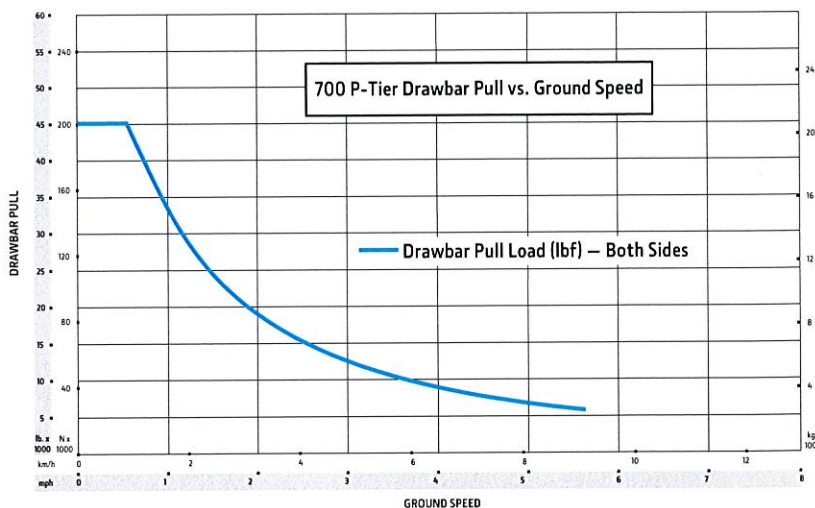
700

P

700 P-TIER DOZER SPECIFICATIONS

While general information, pictures, and descriptions are provided, some illustrations and text may include product options and accessories NOT AVAILABLE in all regions, and in some countries products and accessories may require modifications or additions to ensure compliance with the local regulations of those countries.

Engine	700 P-TIER XLT / 700 P-TIER LGP
Blade Type	Power-Angle-Tilt (PAT)
Manufacturer and Model	John Deere PowerTech™ PVS 6068
Non-Road Emission Standard	EPA Final Tier 4/EU Stage V
Displacement	6.8L (414 cu. in.)
SAE Net Rated Power	101 kW (135 hp) at 1,800 rpm
Aspiration	Turbocharged with charge-air cooler
Air Cleaner	Dual-stage dry tube with tangential unloader
Cooling	
Type	Variable-speed suction fan with optional reversing feature
Engine Coolant Rating	-37 deg. C. (-34 deg. F)
Engine Radiator	10 fins per in.
Powertrain	
Transmission	Automatic, dual-path, hydrostatic (HST) drive; load-sensing feature automatically adjusts speed and power to match changing load conditions; each individually controlled track is powered by a variable-displacement piston pump and motor combination; ground-speed selection buttons on single-lever steering and direction control; reverse speed ratio is fully operator customizable; decelerator pedal provides infinite speed control from full speed to complete stop
System Relief Pressure	47 573 kPa (6,900 psi)
Travel Speeds	
Forward and Reverse	8.9 km/h (5.5 mph)
Maximum (optional)	9.7 km/h (6.0 mph)
Steering	Single-lever steering, speed, direction control, and counter-rotation; full power turns and infinitely variable track speeds provide unlimited maneuverability and optimum control; HST steering eliminates steering clutches and brakes
Final Drives	Triple-reduction final drives mounted independently of track frames and dozer push frames for isolation from shock loads
Total Ratio	33.59 to 1
Drawbar Pull	
Maximum	200 kN (45,050 lb.)
At 1.9 km/h (1.2 mph)	131 kN (29,500 lb.)
At 3.2 km/h (2.0 mph)	83 kN (18,600 lb.)
Brakes	
Service	HST (dynamic) braking stops the machine whenever the direction-control lever is moved to neutral or the decelerator is depressed to the detent
Parking	Exclusive safety feature engages wet, multiple-disc brakes whenever the engine stops, the decelerator is depressed to the end of travel, or motion is detected while the transmission control is in neutral; machine cannot be driven with brake applied, minimizing wearout; spring applied, hydraulic release
Hydraulics	
Type	Open-center hydraulic system with fixed-displacement gear pump
Pump Displacement	47.5 cc
System Relief Pressure	22 063 kPa (3,200 psi)
Maximum Flow at Unloaded High Idle	95 L/m (25 gpm)
Control	3-function electrohydraulic (EH) joystick with proportional roller-angle function
Electrical	
Voltage	24 volts
Capacity	
Battery	950 CCA
Reserve	175 min.



700 P-TIER DOZER SPECIFICATIONS

700

P

While general information, pictures, and descriptions are provided, some illustrations and text may include product options and accessories NOT AVAILABLE in all regions, and in some countries products and accessories may require modifications or additions to ensure compliance with the local regulations of those countries.

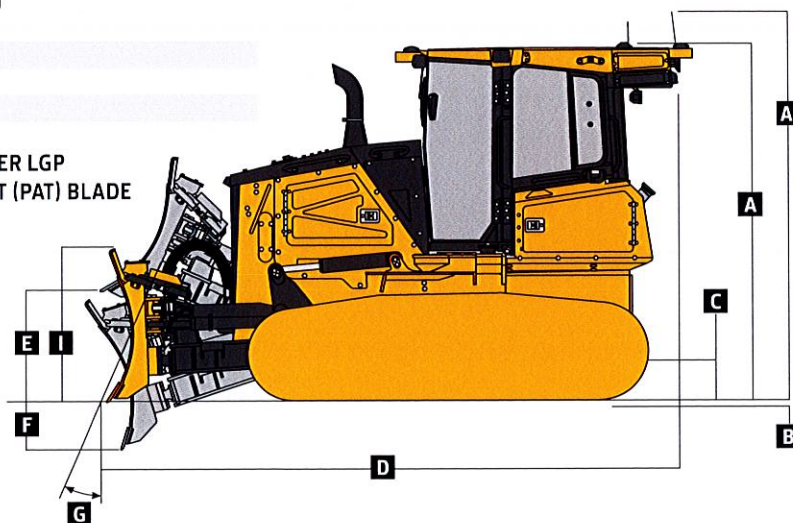
Electrical (continued)		700 P-TIER XLT / 700 P-TIER LGP			
Blade Type		PAT			
Alternator Rating					
Cab		145 amp			
Canopy		110 amp			
Lights					
LED		Cab-mounted front (2) and cab-mounted rear (2)			
Premium LED		Cab-mounted front (4) and cab-mounted rear (4)			
Undercarriage		700 P-TIER XLT		700 P-TIER LGP	
Tracks		John Deere features large deep-heat-treated components; pins and bushings are sealed for life; rollers and idlers are permanently sealed and lubricated; sprockets are segmented; full-length track-frame covers reduce material buildup and ease cleaning			
Track Gauge		1778 mm (70 in.)	1778 mm (70 in.)	1981 mm (78 in.)	1981 mm (78 in.)
Grouser Width		559 mm (22 in.)	559 mm (22 in.)	760 mm (30 in.)	760 mm (30 in.)
Chain		Sealed and lubricated	Sealed and lubricated	Sealed and lubricated	Sealed and lubricated
Shoes, Each Side		39	39	39	39
Track Rollers, Each Side		7	7	7	7
Track Length on Ground		2615 mm (103 in.)	2615 mm (103 in.)	2615 mm (103 in.)	2615 mm (103 in.)
Ground Contact Area		32 569 cm² (5,048 sq. in.)	32 569 cm² (5,048 sq. in.)	44 201 cm² (6,851 sq. in.)	44 201 cm² (6,851 sq. in.)
Ground Pressure		42.2 kPa (6.12 psi)	42.3 kPa (6.14 psi)	32.1 kPa (4.66 psi)	32.3 kPa (4.68 psi)
Track Pitch		191 mm (7.5 in.)	191 mm (7.5 in.)	191 mm (7.5 in.)	191 mm (7.5 in.)
Oscillation at Front Roller		±94 mm (±3.7 in.)	±94 mm (±3.7 in.)	±94 mm (±3.7 in.)	±94 mm (±3.7 in.)
Operator Station		700 P-TIER XLT / 700 P-TIER LGP			
ROPS (ISO 3471 – 2008) and FOPS (ISO 3449 – 2005) Level II					
Serviceability					
Refill Capacities					
Fuel Tank With Lockable Cap		262 L (69.2 gal.)			
Diesel Exhaust Fluid (DEF) Tank		14.2 L (3.8 gal.)			
Cooling System With Recovery Tank		31.4 L (8.3 gal.)			
Engine Oil With Filter		28 L (7.4 gal.)			
Transmission/Hydraulic Reservoir With Filter		102 L (26.9 gal.)			
Operating Weights		700 P-TIER XLT		700 P-TIER LGP	
Base Weight (with standard equipment, rollover protective structures [ROPS], full fuel tank, and 79-kg [175 lb.] operator)		14 016 kg (30,900 lb.)	14 049 kg (30,973 lb.)	14 489 kg (31,943 lb.)	14 555 kg (32,088 lb.)
Optional Components					
Cab With Pressurizer and Heater/Air Conditioner		230 kg (507 lb.)	230 kg (507 lb.)	230 kg (507 lb.)	230 kg (507 lb.)
Rear Screen					
ROPS Canopy		28 kg (62 lb.)	28 kg (62 lb.)	28 kg (62 lb.)	28 kg (62 lb.)
Cab With Air Conditioner		49 kg (108 lb.)	49 kg (108 lb.)	49 kg (108 lb.)	49 kg (108 lb.)
Screens – Full Enclosure, Cab With Air Conditioner		219 kg (483 lb.)	219 kg (483 lb.)	219 kg (483 lb.)	219 kg (483 lb.)
Limb Risers (ROPS canopy and cab)		182 kg (401 lb.)	182 kg (401 lb.)	182 kg (401 lb.)	182 kg (401 lb.)
Heavy-Duty Grille		13 kg (29 lb.)	13 kg (29 lb.)	13 kg (29 lb.)	13 kg (29 lb.)
Counterweight					
Front		144 kg (317 lb.)	144 kg (317 lb.)	144 kg (317 lb.)	144 kg (317 lb.)
Rear		468 kg (1,032 lb.)	468 kg (1,032 lb.)	468 kg (1,032 lb.)	468 kg (1,032 lb.)
Retrieval Hitch		31 kg (68 lb.)	31 kg (68 lb.)	31 kg (68 lb.)	31 kg (68 lb.)
Drawbar, Extended Rigid		93 kg (205 lb.)	93 kg (205 lb.)	93 kg (205 lb.)	93 kg (205 lb.)
Winch		652 kg (1,437 lb.)	652 kg (1,437 lb.)	652 kg (1,437 lb.)	652 kg (1,437 lb.)
Fairlead, 4 Roller		85 kg (187 lb.)	85 kg (187 lb.)	85 kg (187 lb.)	85 kg (187 lb.)
Full-Length Rock Guards		155 kg (342 lb.)	155 kg (342 lb.)	155 kg (342 lb.)	155 kg (342 lb.)
Maximum Life Undercarriage		211 kg (465 lb.)	211 kg (465 lb.)	211 kg (465 lb.)	211 kg (465 lb.)
Track Shoes					
559 mm (22 in.)		In base	In base	–507 kg (–1,118 lb.)	–507 kg (–1,118 lb.)
610 mm (24 in.)		—	—	–392 kg (–864 lb.)	–392 kg (–864 lb.)
760 mm (30 in.)		—	—	In base	In base

700 P-TIER

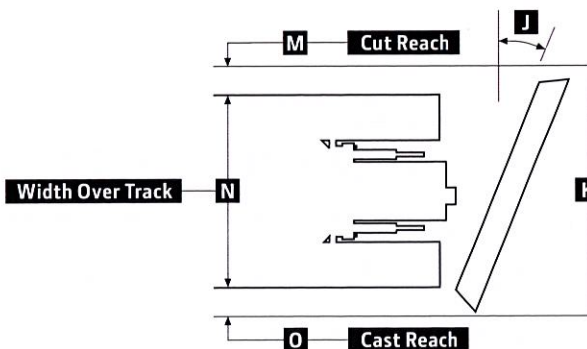
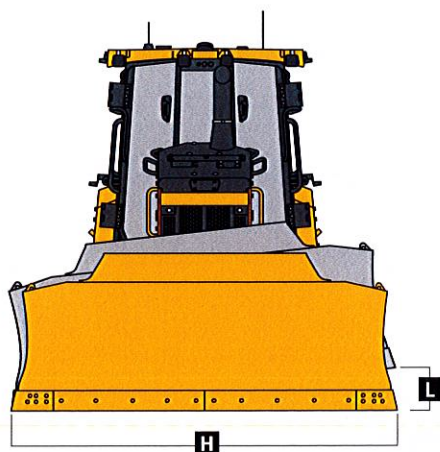
While general information, pictures, and descriptions are provided, some illustrations and text may include product options and accessories NOT AVAILABLE in all regions, and in some countries products and accessories may require modifications or additions to ensure compliance with the local regulations of those countries.

Machine Dimensions		700 P-TIER XLT / 700 P-TIER LGP
Blade Type		Power-Angle-Tilt (PAT)
A	Overall Height to Roof (includes antenna base)	3047 mm (10 ft. 0 in.)
A ^I	Overall Height With Limb Risers	3138 mm (10 ft. 4 in.)
B	Tread Depth With Single-Bar Grouser	56 mm (2.2 in.)
C	Ground Clearance in Dirt	387 mm (15.2 in.)
D	Overall Length	4906 mm (193 in.) (16 ft. 1 in.)
D ^I	Overall Length With Extended Drawbar	5078 mm (200 in.) (16 ft. 8 in.)
D ^{II}	Overall Length With Extended Drawbar and Rear Counterweight	5205 mm (205 in.) (17 ft. 1 in.)
D ^{III}	Overall Length With Winch and Fairlead Rollers	5474 mm (216 in.) (18 ft. 0 in.)
E	Blade Lift Height	977 mm (38 in.) (3 ft. 2 in.)
F	Blade Digging Depth	536 mm (21 in.)
G	Blade Cutting Edge Angle, Adjustable	51.2 to 58.3 deg.

700 P-TIER XLT / 700 P-TIER LGP
WITH POWER-ANGLE-TILT (PAT) BLADE



Machine Dimensions (continued)		700 P-TIER XLT		700 P-TIER LGP	
Straight					
H	Blade Width	3077 mm (121 in.) (10 ft. 1 in.)	3231 mm (127 in.) (10 ft. 7 in.)	3383 mm (133 in.) (11 ft. 1 in.)	3688 mm (145 in.) (12 ft. 1 in.)
I	Blade Height	1322 mm (52 in.) (4 ft. 4 in.)	1322 mm (52 in.) (4 ft. 4 in.)	1322 mm (52 in.) (4 ft. 4 in.)	1322 mm (52 in.) (4 ft. 4 in.)
	SAE Capacity	3.4 m³ (4.4 cu. yd.)	3.5 m³ (4.6 cu. yd.)	3.6 m³ (4.8 cu. yd.)	3.9 m³ (5.1 cu. yd.)
	Weight	811 kg (1,788 lb.)	844 kg (1,861 lb.)	875 kg (1,929 lb.)	941 kg (2,075 lb.)
	C-Frame Assembly Weight (without blade)	803 kg (1,770 lb.)	803 kg (1,770 lb.)	803 kg (1,770 lb.)	803 kg (1,770 lb.)
J	Blade Angle	25 deg.	25 deg.	25 deg.	25 deg.
K	Overall Width With Blade Angled	2808 mm (111 in.) (9 ft. 3 in.)	2912 mm (115 in.) (9 ft. 7 in.)	3049 mm (120 in.) (10 ft. 0 in.)	3324 mm (131 in.) (10 ft. 11 in.)
L	Blade Tilt	426 mm (17 in.)	447 mm (18 in.)	468 mm (18 in.)	510 mm (20 in.)
M	Cut Reach	0 mm (0 in.)	64 mm (3 in.)	133 mm (5 in.)	270 mm (11 in.)
N	Width Over Track	2338 mm (92 in.) (7 ft. 8 in.)	2338 mm (92 in.) (7 ft. 8 in.)	2741 mm (108 in.) (9 ft. 0 in.)	2741 mm (108 in.) (9 ft. 0 in.)
O	Cast Reach	441 mm (17 in.)	510 mm (20 in.)	378 mm (15 in.)	515 mm (20 in.)

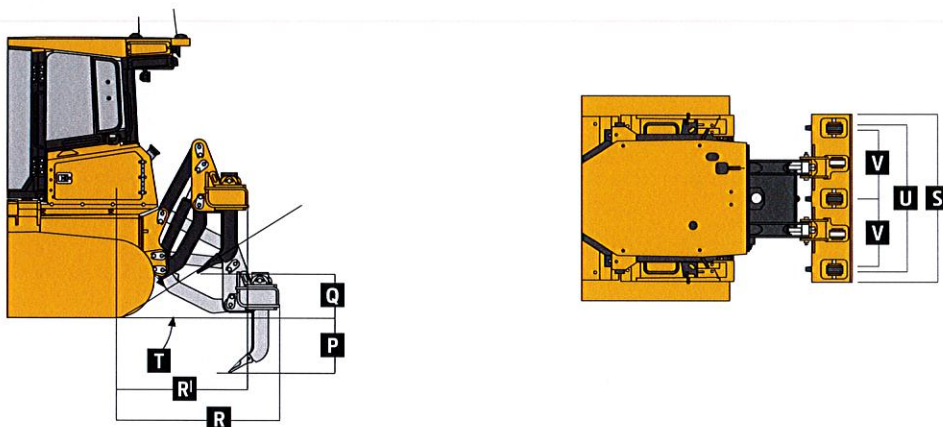


While general information, pictures, and descriptions are provided, some illustrations and text may include product options and accessories NOT AVAILABLE in all regions, and in some countries products and accessories may require modifications or additions to ensure compliance with the local regulations of those countries.

700 P-TIER

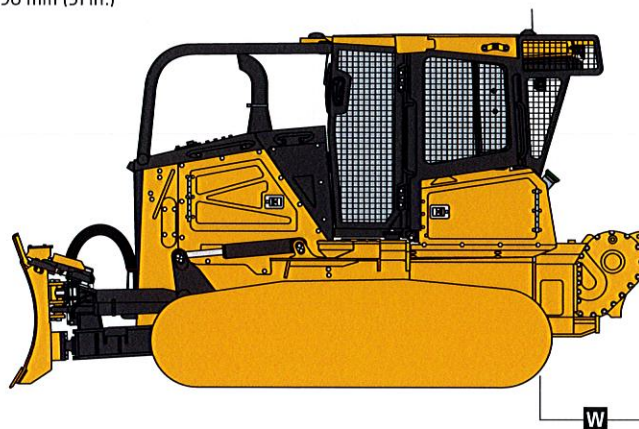
Rear Ripper 700 P-TIER XLT / 700 P-TIER LGP

Blade Type	PAT
Multi-shank parallelogram ripper with 5 pockets and 3 shanks	
Weight	1444 kg (3,183 lb.)
P Maximum Penetration	563 mm (22 in.)
Q Maximum Clearance Under Tip	584 mm (23 in.)
R Overall Length, Lowered Position	1494 mm (59 in.) (4 ft. 11 in.)
R^l Overall Length, Raised Position	1210 mm (48 in.) (4 ft. 0 in.)
S Overall Beam Width	1930 mm (76 in.) (6 ft. 4 in.)
T Slope Angle (full raise)	26 deg.
U Ripping Width	1673 mm (66 in.) (5 ft. 6 in.)
V Distance Between Shanks	806 mm (32 in.)



4000S Winch 700 P-TIER XLT / 700 P-TIER LGP

W Winch Length	798 mm (31 in.)
-----------------------	-----------------



Additional equipment

Key: ● Standard ▲ Optional or special

See your John Deere dealer for further information.

700	
P-TIER	Engine
●	Meets EPA Final Tier 4/EU Stage V emissions
●	John Deere PowerTech™ PVS 6068 6.8L engine
●	Wet-sleeve cylinder liners
●	Eco mode
▲	Exhaust stack, black
▲	Exhaust stack, chrome
●	Turbocharged and air-to-air after-cooled
●	Dual-element dry-canister air cleaner
●	Engine glow-plug starting system
●	Programmable auto engine shutdown
●	Automatic turbo cool-down timer
●	Exhaust filter, under hood, with vertical stack
●	Fuel filters with automatic electronic priming
▲	Severe-duty fuel filter
▲	Engine coolant heater, 120 volt
●	110-amp alternator (canopy)
●	145-amp alternator (cab)
Cooling	
●	Hydraulically driven cooling fan, variable-speed suction type
●	Engine cooling rated -37 deg. C (-34 deg. F)
▲	Automatic, programmable reversing fan

700	
P-TIER	Cooling (continued)
●	Engine radiator, hydrostatic (HST) cooler, and hydraulic cooler, 10 fins per inch
●	Enclosed safety fan guard (conforms to SAE J1308 and ISO 3457)
●	Single-plane non-stacked cooler design
Powertrain	
●	Dual-path HST transmission
●	Reverse-speed ratios (100%, 115%, and 130% presets or operator defined)
●	Operator-selectable decelerator function (hydrostats and engine or hydrostats only)
●	Single-lever steering with counter-rotate function
●	Full power turns with infinitely variable track speed
●	HST (dynamic) service brakes
●	Wet, multi-disc parking brake
●	Remote diagnostic test ports
●	Automatic cold-weather transmission warmup system
●	Automatic transmission derating for exceeded system temperatures
Hydraulic System	
●	Electrohydraulic (EH) system with fixed-displacement hydraulic gear pump
●	3-spool EH control valve for Power-Angle-Tilt (PAT)

700	
P-TIER	Hydraulic System (continued)
▲	4-spool EH control valve for PAT with single auxiliary
●	Electrohydraulics with EZ Grade
●	Hydrau™ All-Season Hydraulic Oil, -25 deg. C to 50 deg. C (-13 deg. F to 122 deg. F)
▲	Hydrau™ XR Hydraulic Oil, -40 deg. C to 40 deg. C (-40 deg. F to 104 deg. F)
●	Hydraulic pump, standard
▲	Hydraulic pump for direct-drive winch
Precision Construction Solutions	
▲	John Deere G5 Plus 325-mm (12.8 in.) touchscreen dedicated grade-control display
▲	SmartGrade™ Ready Including 2D Grade Control system
▲	SmartGrade with Topcon
▲	SmartGrade with Leica
Undercarriage	
●	Full-length, smooth-surface track frame covers
●	Double-flange rollers
●	Oscillating undercarriage
●	Maximum Life undercarriage system
▲	Heavy-duty sealed and lubricated undercarriage
▲	Extended Life undercarriage with SC-2™ bushings
▲	Full-length rock guards

While general information, pictures, and descriptions are provided, some illustrations and text may include product options and accessories NOT AVAILABLE in all regions, and in some countries products and accessories may require modifications or additions to ensure compliance with the local regulations of those countries.

Net engine power is with standard equipment including air cleaner, exhaust system, alternator, and cooling fan at test conditions specified per ISO9249. No derating is required up to 3050-m (10,000 ft.) altitude. Also available: winches, fair-leads, log arches, skidding grapples, trash packages, landfill protection packages, cable plows, side booms, field-installed cab for canopy, canopy heater, and fire-suppression systems. Specifications and design subject to change without notice. Wherever applicable, specifications are in accordance with SAE standards. Except where otherwise noted, these specifications are based on a unit with ROPS, full fuel tank, and 79-kg (175 lb.) operator. Operator station ROPS and FOPS certified.

Additional equipment *(continued)*

Key: ● Standard ▲ Optional or special

See your John Deere dealer for further information.

700	
P-TIER	Operator's Station
▲	Canopy cab with under-seat heater
▲	Enclosed cab with air/heat
▲	Automatic temperature control (ATC) system
●	Standard seat, vinyl with heavy-duty air suspension (canopy)
●	Deluxe seat, cloth with heavy-duty air-suspension (cab)
▲	Premium seat, leather-accented, heated and ventilated, with heavy-duty air-suspension (cab)
●	Under-seat heater (canopy)
●	AM/FM/Weather-Band (WB) radio with front auxiliary (cab)
▲	Premium radio with Bluetooth®, AM/FM/WB radio, remote auxiliary, and remote USB port (cab)
●	203-mm (8 in.) touchscreen multifunction/multilanguage color LCD monitor: Tachometer, hour meter, transmission direction and speed (forward/reverse), exhaust filter status, ambient temperature, and clock
●	Built-in diagnostics: Diagnostic-code details / Sensor values / Calibrations / Individual circuit tester
●	Backup alarm
▲	Advanced Vision System with dedicated display

700	
P-TIER	Operator's Station <i>(continued)</i>
▲	Rearview camera
●	12-volt accessory plug (1)
▲	Additional 12-volt accessory plug
●	Keyless start with multiple security codes
●	Retractable seat belt, 76 mm (3 in.) (conforms to SAE J368)
▲	Fire extinguisher mounting bracket
▲	External-mounted rear-attachment mirror (cab)
●	Front, door, and rear wipers and washers (cab)
Overall Vehicle	
●	Environmental drain package
▲	Fluid-sample ports
●	JDLink™ wireless machine communication system (available in specific countries; see your local dealer for details)
▲	Quick service ports (HST, hydraulic, and engine oil, and coolant)
●	LED lights (configuration dependent on cab-trim package)
▲	Premium LED lights (configuration dependent on cab-trim package)
▲	Engine-compartment light
▲	Beacon light

700	
P-TIER	Overall Vehicle <i>(continued)</i>
▲	Heavy-duty grille
▲	Final-drive trash guards (waste applications)
▲	Full screens for cab
▲	Rear window screen
▲	Forestry limb risers (sweeps)
●	Lockable master electrical disconnect switch
Attachments	
▲	Rear ripper, parallelogram, 3 shank
▲	Counterweight, front, 144 kg (317 lb.)
▲	Single rear counterweight
▲	Retrieval hitch with pin
▲	Retrieval hitch with 1 counterweight
▲	Extended rigid drawbar
▲	Extended rigid drawbar with 1 counterweight
▲	Winch, John Deere 4000S, power in/free spool out OR power out
▲	4-roller fairlead for winch
XLT	LGP 700 P-Tier Shoes
●	▲ 559-mm (22 in.) moderate service
	▲ 610-mm (24 in.) moderate service
	● 760-mm (30 in.) moderate service

While general information, pictures, and descriptions are provided, some illustrations and text may include product options and accessories NOT AVAILABLE in all regions, and in some countries products and accessories may require modifications or additions to ensure compliance with the local regulations of those countries.

Net engine power is with standard equipment including air cleaner, exhaust system, alternator, and cooling fan at test conditions specified per ISO9249. No derating is required up to 3050-m (10,000 ft.) altitude. Also available: winches, fair-leads, log arches, skidding grapples, trash packages, landfill protection packages, cable plows, side booms, field-installed cab for canopy, canopy heater, and fire-suppression systems. Specifications and design subject to change without notice. Wherever applicable, specifications are in accordance with SAE standards. Except where otherwise noted, these specifications are based on a unit with ROPS, full fuel tank, and 79-kg (175 lb.) operator. Operator station ROPS and FOPS certified.



MD700PAU (25-03)



JOHN DEERE



6801 McFarland Blvd West
Northport, AL 35476
205-339-0300

2149 Highway 31 South
Pelham, AL 35124
205-988-4474

25135 One Aviation Way SW
Madison, AL 35756
256-233-1914

2255 Highway 21 South
Oxford, AL 36203
256-831-0921

66 Industrial Park Drive
Monroeville, AL 36460
251-575-7111

4308 Water Trail
Graysville, AL 35073
205-988-4472

3540 Wetumpka Highway
PO Box 210278, Montgomery, AL 36
334-277-7260

www.warriortractor.com

M1482





Company ID Number: 513478

THE E-VERIFY PROGRAM FOR EMPLOYMENT VERIFICATION MEMORANDUM OF UNDERSTANDING

ARTICLE I

PURPOSE AND AUTHORITY

This Memorandum of Understanding (MOU) sets forth the points of agreement between the Department of Homeland Security (DHS) and Warrior Tractor & Equipment Co., Inc. (Employer) regarding the Employer's participation in the Employment Eligibility Verification Program (E-Verify). This MOU explains certain features of the E-Verify program and enumerates specific responsibilities of DHS, the Social Security Administration (SSA), and the Employer. E-Verify is a program that electronically confirms an employee's eligibility to work in the United States after completion of the Employment Eligibility Verification Form (Form I-9). For covered government contractors, E-Verify is used to verify the employment eligibility of all newly hired employees and all existing employees assigned to Federal contracts or to verify the entire workforce if the contractor so chooses.

Authority for the E-Verify program is found in Title IV, Subtitle A, of the Illegal Immigration Reform and Immigrant Responsibility Act of 1996 (IIRIRA), Pub. L. 104-208, 110 Stat. 3009, as amended (8 U.S.C. § 1324a note). Authority for use of the E-Verify program by Federal contractors and subcontractors covered by the terms of Subpart 22.18, "Employment Eligibility Verification", of the Federal Acquisition Regulation (FAR) (hereinafter referred to in this MOU as a "Federal contractor with the FAR E-Verify clause") to verify the employment eligibility of certain employees working on Federal contracts is also found in Subpart 22.18 and in Executive Order 12989, as amended.

ARTICLE II

FUNCTIONS TO BE PERFORMED

A. RESPONSIBILITIES OF SSA

1. SSA agrees to provide the Employer with available information that allows the Employer to confirm the accuracy of Social Security Numbers provided by all employees verified under this MOU and the employment authorization of U.S. citizens.
2. SSA agrees to provide to the Employer appropriate assistance with operational problems that may arise during the Employer's participation in the E-Verify program. SSA agrees to provide the Employer with names, titles, addresses, and telephone numbers of SSA representatives to be contacted during the E-Verify process.
3. SSA agrees to safeguard the information provided by the Employer through the E-Verify program procedures, and to limit access to such information, as is appropriate by law, to individuals responsible for the verification of Social Security Numbers and for evaluation of the E-Verify program or such other persons or entities who may be authorized by SSA as governed



Company ID Number: 513478

To be accepted as a participant in E-Verify, you should only sign the Employer's Section of the signature page. If you have any questions, contact E-Verify at 888-464-4218.

Employer Warrior Tractor & Equipment Co., Inc.	
Stanley McCracken Name (Please Type or Print)	Title
Electronically Signed Signature	03/01/2012 Date
Department of Homeland Security – Verification Division	
USCIS Verification Division	
Name (Please Type or Print)	Title
Electronically Signed Signature	03/01/2012 Date

Information Required for the E-Verify Program

Information relating to your Company:

Company Name:	Warrior Tractor & Equipment Co., Inc.
Company Facility Address:	6801 McFarland Blvd
	Northport, AL 35476
Company Alternate Address:	P O Box 412
	Northport, AL 35476
County or Parish:	TUSCALOOSA
Employer Identification Number:	630588737



Company ID Number: 513478

North American Industry Classification Systems Code:	423
Administrator:	Warrior Tractor and Equipment Co., Inc.
Number of Employees:	100 to 499
Number of Sites Verified for:	1
Are you verifying for more than 1 site? If yes, please provide the number of sites verified for in each State:	
<ul style="list-style-type: none">• ALABAMA 1 site(s)	

Information relating to the Program Administrator(s) for your Company on policy questions or operational problems:

Name:	Stanley N McCracken		
Telephone Number:	(205) 339 - 0300	Fax Number:	(205) 333 - 0101
E-mail Address:	wte024@warriortractor.com		