

BID SUBMITTAL FORM
Alabama County Joint Bidding Program
BID ITEM – 15.5' DUMP BODY - OPTION B AUTOMATIC

Company Name: Logan Dump Bodies

Address: 124 Ward Road
Salyersville, Ky 41465

Bid Submitted by: Michael Canada
(Name of company representative)

Title: Customer Rep E-mail address: Mike.Canada@logancorp.com

Phone: 606-791-7208 Fax: _____

By submitting this bid, we agree:

Initials

That the equipment model number identified below meets the bid specs for this bid item MC

That the bid price will be honored for all counties for the period from **January 1, 2026** to **June 30, 2026**. MC

That the equipment will be delivered at the bid price to all counties participating in the joint bid program MC

That the company representative listed above will be the contact person for purchasing this bid item under the joint bid program MC

That the bid is accompanied by a current catalog or model specification document for the model number identified below MC

That the bid is accompanied by a copy of the manufacturer's standard warranty as required in the bid specifications MC

That the bid includes the E-Verify documentation required by Alabama law MC

We comply with, and if awarded the contract, we will comply with, the requirements of Section 41-16-50 and Sections 41-16-160 to -166, Code of Alabama 1975. MC

That, if awarded the bid, a performance bond will be provided upon request MC

That an option sheet with individual pricing is attached MC

15.5 Steel Dump Body (Option B) Automatic

Total Bid Price including options: \$ 43,245.00 AS A Tri Axle
Equipment Model #: Logan LS WITH ALL OPTIONS

Description: Sheet & Post Steel Body

Signature of company representative submitting bid: Michael Conrad-

Title: Customer Rep

OPTION COST SHEET FOR 15.5' STEEL DUMP BODY – OPTION B (AUTOMATIC TRANSMISSION)

Tri Axle Option Items

	<u>Option Price</u>
Silent Drive or Equal Lift Axle	\$ <u>5.500</u> .00
Four Steel Disc, Ten hole, hub piloted, bud style 22.5x8.25 wheels on lift axle	\$ <u>575</u> .00
Four 11R22.5 recap tires on lift axle	\$ <u>1400</u> .00

Other Options

	<u>Option Price</u>
High lift tail gate	\$ <u>750</u> .00
Bed body vibrator	\$ <u>700</u> .00
25-ton heavy duty Pintle Hitch	\$ <u>1.375</u> .00
Chip Spreader bar mounted	\$ <u>650</u> .00

NOTE: Award will be made on the basis of the total cost of the machine with all options included. However, a county may, at its discretion, deduct one or more of the above-referenced options from the machine, and in such event, the cost of the option as stated on the bid shall be deducted from the total cost of the machine. There shall be no other deductions and no additions made to the machine by the purchasing county or by the vendor.

Equipment Model #: LS

Description: Sheet & Post steel Body

Signature of company representative submitting bid: Michael Conner

Title: Customer Rep

BID SPECIFICATIONS

15.5' STEEL DUMP BODY OPTION B

(AUTOMATIC TRANSMISSION)

GENERAL

These specifications shall be construed as the minimum acceptable standards for a 15.5' Steel Dump Body. Should the manufacturer's current published data or specifications exceed these standards, the manufacturer's standards shall be considered minimum and shall be furnished. All integral parts not specifically mentioned in the scope of these specifications that are necessary to provide a complete working unit shall be furnished. Additionally, the machine offered for bid shall include all standard manufacturers' equipment. The 15.5' Steel Dump Body must be a new current production model.

The use of specific names or numbers in the specifications is not intended to restrict the bidder or any seller or manufacturer but is intended solely for the purpose of indicating the type, size, and quality of equipment considered best adapted to the uses of counties participating in this joint bid.

BID SUBMITTAL FORM

Each bidder must submit his or her bid on the Bid Submittal Form included in the invitation to bid package. All written warranties to be submitted shall be attached to the Bid Submittal Form.

BID PRICE

The price bid shall include all destination charges, delivery charges, title fees, rebates and all other applicable costs and refunds.

REPLACEMENT PARTS AVAILABILITY

Parts must be available for 5 years or 500,000 miles of use for the piece of equipment bid.

ASSEMBLY AND DELIVERY

The dump body will be purchased for use with a heavy-duty dump truck chassis (with Automatic Transmission) bid separately. The dump body company will be responsible for assembly and installation of the dump body and related optional equipment, including the cost of the same. The selling truck chassis dealer will be responsible for delivery of the chassis to the dump body company, for installation and for delivery of the complete dump truck unit to the county following installation, and assembly of the dump body and related options onto the truck chassis. Freight to and from the dump body company will be included in the truck bidder's proposal. Dump body installation and assembly costs will be included in the dump body bidder's proposal.

WARRANTY

Bidders shall submit a copy of the manufacturer's standard warranty.

Yes ☒ No ☐
Page# 14
Or
Attachment

DUMP BODY

Dump body shall meet all federal and state, health and safety regulations and must conform to American National Standard Institute (A.N.S.I.) Regulations (A.N.S.I.Z145) 1975.

Yes ☒ No ☐
Page #

Dump body supplier must have their own service and parts facility.

Yes ☒ No ☐
Page #

Dump body supplier must have a minimum of five (5) years' experience in sales, service and repair of dump bodies.

Yes ☒ No ☐
Page #

Body must be covered by product liability insurance.

Yes ☐ No ☐
Page #

GENERAL OPERATING SPECIFICATIONS AND DIMENSIONS

14-16 cubic yard capacity; 15.5 feet long; 42-inch high sides; 48- inch high tailgate; sides, tailgate, floor shall be ¼ inch AR 450 steel; tailgate shall be sloping with a six (6) inch slope; 8" x 2" Rectangular Tubing Long Sills (Main Runners); 1.5" x 3" rectangular tubing cross-members on 12" centers; HYVA 6310 hoist that shall be class 120 hoist with a minimum three (3) active stages and minimum 52,000 pound capacity; direct mount integral pump and P.T.O. combination with air control on the P.T.O.; air tailgate latch control; electric tarp with vinyl asphalt type tarp; 36 inch cab shield, eight (8) inch wide schedule 80-pipe push bar asphalt apron across rear of body; 6 Inch metal board; rib reinforced sidewalls and three (3) formed tailgate design; and Metro light kit.

*TOP
Rail Hi lift*

Yes ☒ No ☐
Page # 10 + 11

OTHER OPTIONS

Bid must include the cost for each of the following options, itemized separately on the bid:

High lift tail gate

Yes ☒ No ☐
Page # 10

Bed body vibrator

Yes ☒ No ☐
Page # 11

30 TON
25-ton heavy duty Pintle Hitch, swivel type, spring loaded, with safety chain rings, six (6) prong trailer light socket and air brakes hookup. Mounted 26 inches from ground with truck empty.

Yes ☒ No ☐
Page # 11

Chip spreader bar mounted at end of frame.

Yes ☒ No ☐
Page #

NOTE: Award will be made on the basis of the total cost of the dump body with all options included. However, a county may, at its discretion, deduct one or more of the above-referenced options from the dump body, and in such event, the cost of the options as stated on the bid shall be deducted from the total cost of the dump body. There shall be no other deductions and no additions made to the dump body by the purchasing county or by the vendor.



www.logancorp.com

124 Ward Road
Salyersville, KY 41465
Phone: (606)349-1744
Fax: (606)349-1144

Quote Date: 11/11/2025

Prepared by: Mike Canada

Quote #: 10175

Reference: 15.5 STEEL DUMP BODY OPTION B AU

CUSTOMER: 300052
PRE-ACCOUNT CUSTOMER

SHIP TO:
PRE-ACCOUNT CUSTOMER

ATTN: Kenya Howard 334.263.7594 jointbid@alabamacounties.org

Chassis Info:

OEM: 2026 ANY
VIN:
Cab to Body:
Transmission: AUTOMATIC

C/A-C/T:
Pivot:
Overhang:
Cab Height:

Body:

Model: LS
Installation: Installed
Length: 15 1/2'
Inside Width/Outside Width: 84" Inside 96" Outside

Understructure:

Deck: 1/4" AR 450
Longsills: 7" CHANNEL 12.25lb/ft

X-Members: 4" CHANNEL 5.4lb/ft
X-Member Spacing: 4" CHANNEL

Sides:

Side Height: 42"
Side Material: 1/4" AR 450
Bottom Rail / Fender: 10GA HIGH TENSILE
Side Boards: 2 X 2 X 1/4" INVERTED ANGLE
Aluminum Fender Covers: NOT INCLUDED

Top Rail: FORMED SELF-SHEDDING
Vertical Side Bracing: 10GA HIGH TENSILE
Horizontal Side Bracing: 10GA HIGH TENSILE
Boarding Ladder: TREAD GRIP STEPS W/INTEGRATED HAND GRIPS

Bulkhead:

Bulkhead Height: NEED
Bulkhead Material: 1/4" AR 450
Shovel Holder: NOT INCLUDED
Inside Steps: DRIVER'S SIDE, INTEGRAL ANTI-SLIP DESIGN

Cabshield: FULL WIDTH, W/FORMED IN WIND DEFLECTOR, 10GA
Cabshield Length: 36" Width:
Cabshield Material: 10GA HIGH TENSILE

Tailgate:

Tailgate Height: 48"
Tailgate Material: 1/4" AR 450
Top Hinge Style: HD HIGH LIFT, W/CYLINDERS UNDER TOP RAIL
Tailgate Safety Chains: 3/8" HIGH GRADE, W/PROTECTIVE SLEEVE
Stoker Door: NOT INCLUDED
Apron: 8" HEAVY DUTY PIPE BUMPER

Tailgate Slope: 7 DEGREE (APPROX 6")
Panels: 3
Bottom Latch Style: OVERSLUNG, PLATE STEEL W/BRASS BUSHINGS
Bottom Latch Controls: ALUMINUM AIR CYLINDER OPERATED
Wing Latches: NOT INCLUDED
Tailgate Options: * TREAD PLATE PROTECTIVE COVER AT SAFETY CHAIN AREA * INVERTED ANGLE ON TOP OF GATE

Lights: All Lights are LED by:  **Maxxima**

Bottom Side Markers: 2
Rear Stop/Tail/Turn: 1
Front Strobes: 2

Top Side Markers: 0
Cabshield Markers: 2
Rear Strobes: 2
Light Options:

Hydraulics: Logan's standard hoists by:  **Custom Hoists, Inc.**

Hoist Model: CUSTOM HOISTS 63-126
Pump: DIRECT MOUNT 2.5" GEAR
Pump Controls: AIR FEATHERING
Pump Cutoff: AIR
Axle Controls: INSIDE TRUCK CAB

PTO: HOT SHIFT FOR AUTO TRANS
PTO Controls: WIRED TO SWITCH IN DASH
Console: ALUMINUM, WITH INSPECTION COVER
Hydraulic Tank: STEEL FRONT MOUNT, 25GAL

Paint: All bodies coated with  **AXALTA**

Body Primer: AXALTA TUF-COTE, HIGH SOLIDS ALKYD PRIMER
Body Topcoat: AXALTA IMRON ELITE, POLYURETHANE ENAMEL

Top Coat Paint Code: ANY
Side Boards: NOT INCLUDED

Chassis Components:

Rear Hinge: 1 3/4" PIN STRAP STYLE, W/FULL PIN
Body Safety Prop: INTEGRATED WITH REAR HINGE
Subframe: FORMED 36" Z BAR
Backup Alarm: INCLUDED

Rear Frame Bumper: NOT INCLUDED
Front Flaps: STEEL MUD GUARDS
Rear Mud Flaps: STANDARD HD LOGAN RUBBER FLAPS

Tarp:

Type: MOUNTAIN ELECTRIC FLIP TARP SYSTEM
Wind Deflector: FORMED IN CAB SHIELD

Material: ASPHALT VINYL
Tarp Options:

 **Smart DUMP™** Accident Prevention System: NOT INCLUDED

Options Included:

	Qty			Qty
1: OP ELECTRIC VIBRATOR INST	1	6:		
2: OP 30TON PINTLE HOOK INST	1	7:		
3: OP 1" PINTLE PLATE INST	1	8:		
4: OP 20K NON STEER AXLE	1	9:		
5: OP 8.25X22.5 STEEL RIM	4	10:		

Special Options:

>>>ADD SPREADER BAR<<<

>>>4 11R22.5 RECAP TIRES<<<

>>>ADD 2" METAL BOX BOARDS<<<

Quote Summary

12

Quoted Amount per unit \$ 43,245.00

Material Surcharge

Federal Excise Tax

Estimated KY State Sales Tax

Assumed KY delivery
Delivery

TOTAL QUOTED AMOUNT \$ 43,245.00

Pricing subject to change upon imposition of tariffs.

**Lead time is calculated from the date Logan Corporation receives subject chassis at Salyersville facility.
Current lead time is 28 weeks.**

TERMS:

Above pricing reflects the current pricing based on the latest material surcharges.

Changes to material pricing will change the above pricing. All pricing is valid for 30 days.

Unless an exemption certificate is received, state sales tax in state where delivered will be added to invoice.

Dealer to collect all applicable taxes including Federal Excise Tax and state sales tax.

Balance due per terms or when the unit is sold, whichever comes first.

A purchase order and signed quote is required before the above body is ordered.

All orders are subject to credit approval before order will be placed.

Please return a signed copy of these spec's with the purchase order.

APPROVED BY: _____ DATE: _____

Quote #: 10175

Date: 11/11/2025



The LS body is a **Heavy Duty**, general contractors style, box shape steel dump body. As with all of the Logan manufactured dump bodies, the LS is constructed with 100 percent continuous welding. Constructed with high quality AR450 steel plate and a durable stacked understructure, the LS style body is capable of hauling the toughest material out there.

CALL NOW

LS DUMP STYLE BODY

The LS body is a **Heavy Duty**, general contractors style, box shape steel dump body. As with all of the Logan manufactured dump bodies, the LS is constructed with 100 percent continuous welding. Constructed with high quality AR450 steel plate and a durable stacked understructure, the LS style body is capable of hauling the toughest material out there.

CALL NOW

LS DUMP STYLE BODY FEATURES

LOGAN “LS” style Dump Body Features:

- High-Lift Tailgate
- Lift arm positioning goes through the top rail
- LED lights-standard
- Refined rear hinge bracket





LOGAN “LS” style Dump Body Features:

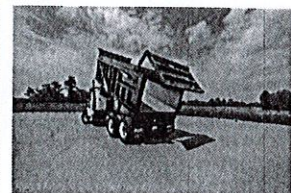
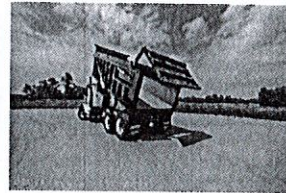
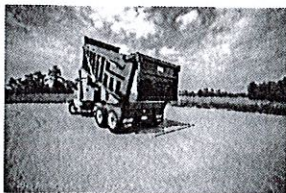
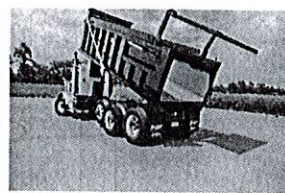
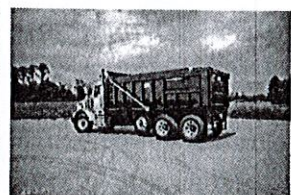
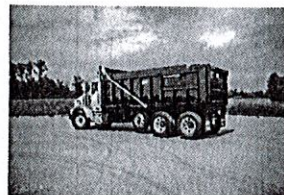
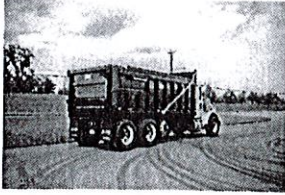
- High-Lift Tailgate
- Lift arm positioning goes through the top rail
- LED lights-standard
- Refined rear hinge bracket

LOGAN "LS" style Dump Body Features:

- High-Lift Tailgate
- Lift arm positioning goes through the top rail
- LED lights-standard
- Refined rear hinge bracket



LS DUMP STYLE BODY GALLERY





DUMP BODY PRODUCT LINE LIMITED WARRANTY AND DISCLAIMER

Logan Corporation provides a twelve-month Limited Warranty (beginning on the delivery date of the equipment) to the original retail purchaser of its dump body line of products. This Limited Warranty covers the original equipment provided by Logan to be free of defects in material and/or workmanship during the warranty period. Damaged or defective parts that were created due to conditions outside of the normal use intended for the product are expressly not covered. Component parts that are not manufactured by Logan will have their warranty limited to the warranty limitations of the respective component providers.

Products covered under this Limited Warranty will be replaced or repaired in Logan Corporation's sole discretion, with all such warranty work to be done at Logan's Salyersville, Kentucky, facility or such other location or facility chosen by Logan Corporation in its sole discretion. Any attempts to repair or replace allegedly defective parts or components of products subject to this Limited Warranty without first obtaining written authorization from Logan Corporation will automatically void this Limited Warranty and Logan Corporation expressly disclaims all liability to purchaser. Logan reserves the exclusive right to specify any repair methods and/or component replacement repairs as it deems necessary in its sole discretion. Any unauthorized repairs to products subject to this warranty shall automatically void this Limited Warranty.

This Limited Warranty does not obligate Logan Corporation to assume liability for the loss of time, or product, or any consequential damages or losses arising directly or indirectly from defects in material and/or workmanship in the products subject to this Limited Warranty, and Logan Corporation expressly disclaims the same.

Additional limitation to this Limited Warranty:

- Logan Corporation will reimburse a maximum of ninety dollars (\$90) per hour for labor for repairs approved by Logan Corporation.
- All power take-off units, hydraulic pumps, hoses, and associated fittings will be warranted for a period of thirty (30) days from original delivery date only. This additional limitation is due to the fact that regular maintenance is necessary to maintain and prevent leaks or fasteners loosening due to vibration and normal use.
- Any equipment that has been added, altered, or removed in any way so as to affect the safety or operational function(s) of the OEM Logan product is expressly exempt from this Limited Warranty.
- Normal maintenance or service is expressly not covered by this Limited Warranty.

Failure to acknowledge receipt and register this warranty shall in no way affect the limitations of warranty outlined herein.

To register the warranty on a new Logan Corporation dump body, go to:
www.logandumpbodies.com



One Tower Square, Hartford, Connecticut 06183

**COMMERCIAL GENERAL LIABILITY
COVERAGE PART DECLARATIONS**

POLICY NO.: Y-630-3T86029A-COF-25
ISSUE DATE: 07-08-25

INSURING COMPANY:
THE CHARTER OAK FIRE INSURANCE COMPANY

DECLARATIONS PERIOD: From 06-30-25 to 06-30-26 12:01 A.M. Standard Time at your mailing address shown in the Common Policy Declarations.

The Commercial General Liability Coverage Part consists of these Declarations and the Coverage Form shown below.

1. COVERAGE AND LIMITS OF INSURANCE:

COMMERCIAL GENERAL LIABILITY COVERAGE FORM

LIMITS OF INSURANCE

General Aggregate Limit (Other than Products-Completed Operations)	\$ 2,000,000
Products-Completed Operations Aggregate Limit	\$ 2,000,000
Personal & Advertising Injury Limit	\$ 1,000,000
Each Occurrence Limit	\$ 1,000,000
Damage To Premises Rented To You Limit (any one premises)	\$ 300,000
Medical Expense Limit (any one person)	\$ 5,000

2. AUDIT PERIOD: ANNUAL

3. FORM OF BUSINESS: CORPORATION

**4. NUMBERS OF FORMS, SCHEDULES AND ENDORSEMENTS FORMING PART OF THIS COVERAGE
PART ARE ATTACHED AS A SEPARATE LISTING.**

**COMMERCIAL GENERAL LIABILITY COVERAGE
IS SUBJECT TO A GENERAL AGGREGATE LIMIT**

CG T0 01 11 03

Page 1 of 1

PRODUCER: DYNAMIC INS SOLUTIONS

DSQ21

OFFICE: SP-CHARLESTONWV

06J

013086



CERTIFICATE OF LIABILITY INSURANCE

DATE (MM/DD/YYYY)

10/01/2025

THIS CERTIFICATE IS ISSUED AS A MATTER OF INFORMATION ONLY AND CONFERS NO RIGHTS UPON THE CERTIFICATE HOLDER. THIS CERTIFICATE DOES NOT AFFIRMATIVELY OR NEGATIVELY AMEND, EXTEND OR ALTER THE COVERAGE AFFORDED BY THE POLICIES BELOW. THIS CERTIFICATE OF INSURANCE DOES NOT CONSTITUTE A CONTRACT BETWEEN THE ISSUING INSURER(S), AUTHORIZED REPRESENTATIVE OR PRODUCER, AND THE CERTIFICATE HOLDER.

IMPORTANT: If the certificate holder is an ADDITIONAL INSURED, the policy(ies) must have ADDITIONAL INSURED provisions or be endorsed. If SUBROGATION IS WAIVED, subject to the terms and conditions of the policy, certain policies may require an endorsement. A statement on this certificate does not confer rights to the certificate holder in lieu of such endorsement(s).

PRODUCER ADKINS INSURANCE & FINANCIAL SERVICES INC 5986 US ROUTE 60 E BARBOURSVILLE, WV 25504	CONTACT NAME: James Insko PHONE (A/C, No, Ext): 304-733-3560 FAX (A/C, No): 304-733-6268 E-MAIL ADDRESS: Jiminsco@ADKINSINSURANCE.COMCASTBIZ.NET
INSURED LOGAN CORPORATION AND LOGAN WEST MINING SUPPLY AND SERVICE 1126 20TH STREET HUNTINGTON, WV 25703	INSURER(S) AFFORDING COVERAGE INSURER A: The Charter Oak Fire Insurance Company INSURER B: Travelers Property Casualty Company of America INSURER C: The Travelers Indemnity Company of Connecticut INSURER D: INSURER E: INSURER F:

COVERAGES

CERTIFICATE NUMBER:

REVISION NUMBER:

THIS IS TO CERTIFY THAT THE POLICIES OF INSURANCE LISTED BELOW HAVE BEEN ISSUED TO THE INSURED NAMED ABOVE FOR THE POLICY PERIOD INDICATED. NOTWITHSTANDING ANY REQUIREMENT, TERM OR CONDITION OF ANY CONTRACT OR OTHER DOCUMENT WITH RESPECT TO WHICH THIS CERTIFICATE MAY BE ISSUED OR MAY PERTAIN, THE INSURANCE AFFORDED BY THE POLICIES DESCRIBED HEREIN IS SUBJECT TO ALL THE TERMS, EXCLUSIONS AND CONDITIONS OF SUCH POLICIES. LIMITS SHOWN MAY HAVE BEEN REDUCED BY PAID CLAIMS.

INSR LTR	TYPE OF INSURANCE	ADD'L SUBR INSD WVD	POLICY NUMBER	POLICY EFF (MM/DD/YYYY)	POLICY EXP (MM/DD/YYYY)	LIMITS
A	<input checked="" type="checkbox"/> COMMERCIAL GENERAL LIABILITY <input type="checkbox"/> CLAIMS-MADE <input checked="" type="checkbox"/> OCCUR GEN'L AGGREGATE LIMIT APPLIES PER: <input checked="" type="checkbox"/> POLICY <input type="checkbox"/> PRO-JECT <input type="checkbox"/> LOC OTHER:	Y Y	Y-630-3T86029A-COF-22	06/30/2025	06/30/2026	EACH OCCURRENCE \$ 1,000,000 DAMAGE TO RENTED PREMISES (Ea occurrence) \$ 300,000 MED EXP (Any one person) \$ 5,000 PERSONAL & ADV INJURY \$ 1,000,000 GENERAL AGGREGATE \$ 2,000,000 PRODUCTS - COM/OP AGG \$ 2,000,000 \$
B	<input checked="" type="checkbox"/> AUTOMOBILE LIABILITY <input checked="" type="checkbox"/> ANY AUTO OWNED AUTOS ONLY <input type="checkbox"/> SCHEDULED AUTOS HIRED AUTOS ONLY <input type="checkbox"/> NON-OWNED AUTOS ONLY	Y Y	810-3T902118-22-14-G	06/30/2025	06/30/2026	COMBINED SINGLE LIMIT (Ea accident) \$ 1,000,000 BODILY INJURY (Per person) \$ BODILY INJURY (Per accident) \$ PROPERTY DAMAGE (Per accident) \$ \$
B	<input checked="" type="checkbox"/> UMBRELLA LIAB <input checked="" type="checkbox"/> OCCUR <input type="checkbox"/> EXCESS LIAB <input type="checkbox"/> CLAIMS-MADE DED RETENTION \$	Y Y	CUP-3T902536-22-14	06/30/2025	06/30/2026	EACH OCCURRENCE \$ 6,000,000 AGGREGATE \$ 6,000,000 \$
C	WORKERS COMPENSATION AND EMPLOYERS' LIABILITY ANY PROPRIETOR/PARTNER/EXECUTIVE OFFICER/MEMBER EXCLUDED? (Mandatory in NH) If yes, describe under DESCRIPTION OF OPERATIONS below	Y/N <input type="checkbox"/> N/A Y	UB-3T902106-14-G	06/30/2025	06/30/2026	<input checked="" type="checkbox"/> PER STATUTE <input type="checkbox"/> OTH-ER E.L. EACH ACCIDENT \$ 1,000,000 E.L. DISEASE - EA EMPLOYEE \$ 1,000,000 E.L. DISEASE - POLICY LIMIT \$ 1,000,000
C	Garagekeepers		Y-630-3T86029A-COF-22	06/30/2025	06/30/2026	\$3,000,000 LIMIT

DESCRIPTION OF OPERATIONS / LOCATIONS / VEHICLES (ACORD 101, Additional Remarks Schedule, may be attached if more space is required)

CERTIFICATE HOLDER

CANCELLATION

Crenshaw County Highway Department PO Box 628 Luverne AL 36049	SHOULD ANY OF THE ABOVE DESCRIBED POLICIES BE CANCELLED BEFORE THE EXPIRATION DATE THEREOF, NOTICE WILL BE DELIVERED IN ACCORDANCE WITH THE POLICY PROVISIONS. AUTHORIZED REPRESENTATIVE
--	---

Company ID Number: 1898520

Approved by:

Employer LOGAN CORPORATION	
Name (Please Type or Print) Kyle Cox	Title
Signature Electronically Signed	Date 10/04/2022
Department of Homeland Security – Verification Division	
Name (Please Type or Print) USCIS Verification Division	Title
Signature Electronically Signed	Date 10/04/2022



17

Company ID Number: 1898520

Information Required for the E-Verify Program**Information relating to your Company:**

Company Name	LOGAN CORPORATION
Company Facility Address	1126 20TH STREET huntington, WV 25703
Company Alternate Address	
County or Parish	CABELL
Employer Identification Number	550219530
North American Industry Classification Systems Code	423
Parent Company	
Number of Employees	20 to 99
Number of Sites Verified for	2 site(s)



Company ID Number: 1898520

Are you verifying for more than 1 site? If yes, please provide the number of sites verified for in each State:

KY	1
WV	1



Company ID Number: 1898520

Information relating to the Program Administrator(s) for your Company on policy questions or operational problems:

Name	Kyle Cox
Phone Number	3852828796
Fax	
Email	kyle.cox@logancorp.com

\$32,295.00

+ tri axle options

INVITATION TO BID HEAVY EQUIPMENT

NOTICE OF BID OPENING

NOTICE IS HEREBY GIVEN that the Association of County Commissions of Alabama, which administers the Alabama County Joint Bid Program on behalf of Alabama's county governing bodies, shall receive and open bids for the purchase of zero (0) or more items of heavy road equipment at its office located at 2 North Jackson Street, Montgomery, Alabama, at **10:00 a.m. on Tuesday, November 18, 2025**. Bid specifications are available at <http://www.alabamacounties.org/heavy-equipment/> for each of the following items:

Track Mount Excavators
Compact Excavators
Mini Track Excavators
Wheeled Excavators
Highway Speed Truck Excavators
Motor Graders
Wheel Loaders
Heavy Duty Dump Chassis
Lowboy Tractors
Lowboy Trailers
Half Round End Dump
Skid Steer Loader and Attachments
Ride-on Industrial Boom Mowers
Rubber Tire Roller
Vibratory Roller

One-man Pothole Patchers
Trailer Mount Mastic Patcher/Crack Sealer
Trailer Mounted Patcher – Diesel
Trailer Mounted Patcher – Air Compressor/Tools
Chip Spreader
Asphalt Distributor
Asphalt Milling Attachments
Asphalt Storage Tanks
Backhoes
Bulldozers
Dump Bodies
Road Wideners
Ride On Industrial Boom Mowers

Time is of the essence in submitting bids and only bids received in the Association office by 10:00 a.m. Central Time on Tuesday, November 18, 2025 will be opened and considered. Bidders and any other interested individuals are invited to attend the bid opening.

NOTICE OF BID OPENING PROCEDURES

All bids for Heavy Equipment will be opened and the name(s) of the bidders read aloud on the morning of the bid opening on Tuesday, November 18, 2025 at 10:00 a.m. at 2 North Jackson Street, Montgomery, AL. The specifics of each bid submitted will be compiled by the Association staff thereafter and will be available, upon written or emailed request, one week after the bid opening. Requests should be emailed to jointbid@alabamacounties.org.

THE INVITATION PACKAGE

The invitation package for each item to be bid includes: this invitation to bid, the written bid specifications for the particular item of heavy road equipment, and a Bid Submittal Form to be used in submitting a bid for that particular item. Bidders should verify that they have received all pages of the invitation package. If there are any omissions, the bidder should contact Kenya Howard in the Association office by mail, fax, or e-mail (jointbid@alabamacounties.org) to request missing pages. It is the responsibility of the bidder to make this request in sufficient time to prepare and submit the bid in time for the bid opening. Bidders should carefully read and comply with all parts of the invitation package, including all attachments and/or any addendum.

PREPARING AND SUBMITTING BIDS

All bids must be typed or handwritten in ink on the attached Bid Submittal Form. **The completed Bid Submittal Form shall be placed in front of and separated from all other documents included in the bid packet, such that it will be the first document viewed upon opening the bid packet.**

Bids submitted in pencil and bids not submitted on the Bid Submittal Form will **not** be considered. All bids shall include a current catalog or model specification document for the equipment model number being offered for consideration. Bids submitted without such documentation will **not** be considered. Only information contained on the attached Bid Submittal Form and in the model specification document will be considered in evaluating bids.

Each separate requirement in the bid specification includes a block for indicating whether or not the item bid meets the specification. The bidder shall indicate compliance with each requirement by checking "Yes" or "No" in the block to the right of each bid specification. In addition, the bidder shall indicate the page number in the supplied manufacturer's equipment literature on which compliance with the specification can be verified. Failure to complete this portion of the bid form may result in the subject bid not being considered. Additionally, all bidders are required to submit a factory build/order sheet showing all of the standard and option items for each piece of equipment bid in order to assist the bid review committee in assuring that each bid is in conformance with the required bid specifications.

Each bid for one of the heavy equipment items included in the bid package must be submitted on the Bid Submittal Form for that item and forwarded in a separate envelope with the bid item and item number clearly identified on the outside of the envelope. Envelopes containing a "no bid" shall also include the words "NO BID" on the outside of the envelope. Facsimiles and e-mails will not be accepted. Bids submitted by "Express/Overnight" services must be in a separate inner envelope or package sealed and identified as stated above. All bids must be received in the Association office prior to the bid opening. Bids received after the deadline will be returned unopened.

The County Joint Bid Program reserves the right to require a performance bond from successful bidders as permitted under Alabama law. However, **no bid bond is required for this bid offering.**

All bids should be mailed or hand-delivered to:

**ATTN: Alabama County Joint Bid Program
Association of County Commissions of Alabama or ACCA
2 North Jackson Street, FL 7, Montgomery, Alabama 36104 (Physical Address)
P.O. Box 5040, Montgomery, Alabama 36103 (Mailing Address)**

BID SPECIFICATIONS

Please note that each piece of heavy equipment available for bid may include several different sizes and categories of machines. You should read each set of specifications very carefully as the differences vary depending upon the piece and size of equipment.

Where applicable, each bid submission shall include the separate cost of each item listed in the "Options" section of the bid specifications. However, all bids will be awarded on the basis of the **total cost of the machine with all options included**. Therefore, the "Bid Price" stated on the Bid Submittal Form must be the total cost, including the cost of all options.

Both parties agree that the Vendor SHALL extend to ALL counties purchasing this equipment any factory discounts, incentives or rebates that become available during the Contract Period; provided that there are no alterations from the bid specifications for this item required in order to receive the discount, incentive, or rebate. FURTHER, BOTH PARTIES AGREE THAT THE VENDOR SHALL EXTEND TO ALL COUNTIES PURCHASING THIS EQUIPMENT THE SAME PURCHASE PRICE AND DISCOUNTS AS THEY ARE AWARDED ON ANY OTHER NATIONAL PURCHASING COOPERATIVE APPROVED BY THE DEPARTMENT OF EXAMINERS OF PUBLIC ACCOUNTS FOR USE BY ALABAMA COUNTIES.

Once the bids have been awarded, any county participant purchasing under this program may, at its discretion, deduct one or more of the options set out in the bid specifications, and in such event, the cost of the option as stated on the bid shall be deducted from the total cost of the machine. There shall be no other deductions and no additions made to the machine by the purchasing county or by the vendor.

Any use of specific names and/or model numbers in the attached specifications is not intended to restrict the bidder or any seller or manufacturer but is included solely for the purpose of indicating the type, size, and quality of materials, product services, or equipment considered best adapted to the use of the counties participating in the joint bid program.

BIDDER QUALIFICATIONS

All bidders and all program participants must be in compliance with any applicable federal, state, county and municipal laws, regulations, resolutions and ordinances, including but not limited to, licensing, permitting, and taxation requirements. All bidders should be prepared to submit evidence or documentation as proof that they are properly licensed and permitted under any applicable laws upon request. Such evidence or documentation may be submitted with the bid. **Additionally, all bidders shall provide proof that they are in compliance with the E-Verify requirements of Alabama's Immigration Law (Ala. Code § 31-13-1 et seq.). All bidders shall also affirm that they are in compliance with, and will comply with, Alabama's anti-boycott law (Ala. Code § 41-16-5) and anti-economic boycott law (Ala. Code § 41-16-160 et seq.).**

BID AWARD

The Houston County Commission will serve as the awarding authority for all bids and will award all contracts at a regular meeting of the Houston County Commission. Any and all bids submitted in compliance with this invitation to bid shall be considered, and award will be made to the lowest responsible bidder meeting bid specifications as determined by the awarding authority in compliance with Alabama law. All bids will be reviewed and evaluated by a committee created for that purpose, which committee will make comments and recommendations to the awarding authority regarding the award. All factors contained in each invitation package will be evaluated in determining the successful bidder, and any omissions of the stated requirements may be cause for rejection of the bid submitted. The awarding authority reserves the right to reject any and all bids, to waive any informality in bids, and to accept in whole or in part such bid or bids solely at its discretion.

The contract period will be six (6) months with an option to renew each six (6) months not to exceed a period of three (3) years under identical price, terms, and conditions upon the mutual consent of the vendor and the awarding authority. Any renewal contract shall be approved in writing by the vendor and the awarding authority no later than **60 days** prior to the expiration of the existing contract.

CONTACT REGARDING BIDS AND INVITATION

Contact initiated by a potential bidder with any county official, county employee, or member of the Association staff shall only be as specifically set out in this Invitation to Bid. Any questions related to the bid or the County Joint Bid Program shall be directed to Association staff in writing under the procedures set out in this Invitation to Bid. Additionally, a bidder may contact the Association in writing to request an appointment to review bid specifications following the bid opening. However, there shall be no communication with any county official or county employee regarding this bid between the date of this invitation and the date of bid award. Any contact other than as set out here shall be deemed as an attempt to unduly influence the bid award and shall be grounds for rejection of the bid submitted by the bidder initiating such other contact.

Any questions or problems related to downloading or obtaining copies of this Invitation to Bid should be directed to Kenya Howard at jointbid@alabamacounties.org or 334-263-7594.

Any other questions or requests for additional information regarding this invitation or the bid specifications shall be submitted **in writing** no later than five (5) days prior to bid opening to:

ATTN: Patrick McDougald
Association of County Commissions of Alabama
P.O. Box 5040
Montgomery, Alabama 36104

OR

Patrick McDougald
Email: pattymackdaddy@gmail.com