

BID SUBMITTAL FORM
Alabama County Joint Bid Program
Heavy Equipment – Bid Item: 3CY Wheel Loader - Option B

Company Name: Warrior Tractor & Equipment Company, Inc.

Address: 6801 McFarland Blvd, Northport, AL 35476

Bid Submitted by: David Schafer
(Name of company representative)

Title: Sales Manager E-mail address: dschafer@warriortractor.com

Phone: 205-339-0300 Fax: 205-333-0101

By submitting this bid, we agree:

The equipment model number identified below meets the bid specs for this bid item

That the bid price will be honored for all counties for the period from **January 1, 2026** to **June 30, 2026**.

The equipment will be delivered at the bid price to all counties participating in the joint bid program.

The company acknowledges the freight preparation and delivery price is to be included in the total bid price for the standard machine.

The company representative listed above will be the contact person for purchasing this bid item under the joint bid program.

The bid is accompanied by a current catalog or model specification document for the model number identified below.

The bid is accompanied by a copy of the manufacturer's standard warranty as required in the bid specifications.

The bid includes the E-Verify documentation required by Alabama law.

We comply with, and if awarded the contract, we will comply with, the requirements of Section 41-16-50 and Sections 41-16-160 to -166, Code of Alabama 1975.

If awarded the bid, a performance bond will be provided upon request.

The bid documents include the **Manufacturer's Suggested Retail Price Sheet (MSRP) for the Standard Machine.**

Initials

DS

DS

DS

DS

DS

DS

DS

DS

DS

DS

DS


Total Bid Price for Standard Machine: \$ 232,401.00
(Total Bid Price for Standard Machine Includes Freight Preparation, Delivery and Standard Warranty Costs) *

Freight Preparation and Delivery: \$ 7,750.00
(Included in Standard Machine Bid Price)

Manufacturer's Suggested Retail Price for Standard Machine: \$ 340,836.00

Equipment Model #: John Deere 544 P-Tier Wheel Loader

Description: 3 CY Wheel Loader-Option B

Signature of company representative submitting bid: 

Title: Sales Manager

***NOTE:** Award will be made based on the total cost of the **Standard Machine**. The total cost of the standard machine is to include freight preparation, delivery and standard warranty cost. Freight preparation and delivery will be excluded from the total bid price of the standard machine in determining the percentage discount for any available options.

BID SUBMITTAL FORM: OPTION COST SHEET

By submitting this bid, we agree:

To offer any available options at the percent difference between the Manufacturer's Suggested Retail Price Sheet and the actual bid price on the Standard Machine*

11.78

The bid documents include the **Manufacturer's Suggested Retail Price Sheet (MSRP)** for the Standard Machine

10.18

Equipment Model #: John Deere 544 P-Tier Wheel Loader

Description: 3 CY Wheel Loader-Option B

Signature of company representative submitting bid: David R. Deje

Title: Sales Manager

***NOTE:** The percent difference between the **Manufacturer's Suggested Retail Price Sheet (MSRP)** for the standard machine as specified by these **Bid Specifications** and the actual price bid by the vendor will be calculated to determine the percentage discount to be applied to any available options. The bid price of the freight preparation and delivery cost shall be excluded in determining the percentage discount to be applied to available options. Any individual county may choose to add any available option to the standard machine at the percentage discount at the time of purchase.

BID SPECIFICATIONS FOR 3 CY WHEEL LOADER- OPTION B

GENERAL

These specifications shall be construed as the minimum acceptable standards for a 3-yard wheel loader. Should the manufacturer's current published data or specifications exceed these standards, the manufacturer's standards shall be considered minimum and shall be furnished. All integral parts not specifically mentioned in the scope of these specifications that are necessary to provide a complete working unit shall be furnished. Additionally, the machine offered for bid shall include all standard manufacturer's equipment. The wheel loader must be a new current production model and shall meet all EPA and other applicable standards at the time of manufacturer.

The use of specific names and numbers in the specification is not intended to restrict the bidder or any seller or manufacturer but is intended solely for the purpose of indicating the type, size and quality of equipment considered best adapted to the uses of counties participating in this joint bid.

BID SUBMITTAL FORM

Each bidder must submit his or her bid on the Bid Submittal Form included in the Invitation to Bid package. All written warranties to be submitted shall be attached to the Bid Submittal Form.

BID PRICE

The bid price shall include all destination charges, delivery charges, title fees, rebates, and all other applicable costs and refunds.

MANUALS

Each unit shall be provided with one (1) copy of the operator's manual, one (1) copy of the repair manual and one (1) copy of the current parts manual. Units will not be accepted for delivery until the manuals as outlined above are received by the purchaser.

REPLACEMENT PARTS AVAILABILITY

Parts must be available for 5 years or 7,500 hours of use for the piece of equipment bid. If replacement parts are not delivered within three (3) working days of an order being placed, the bidder will deliver an equivalent machine for the county to use at no cost to the county until such time as the parts are delivered to the county so it can affect repairs on its machine.

WARRANTY

Bidders shall submit a copy of the manufacturer's standard warranty. Warranty shall include service response time of maximum of 36 hours within notification by county.

Yes x No
Page # or
Attachment x

OPERATING HEIGHT

Machine shall be no taller than **11'2"** from ground to top of cab, so that the machine can be hauled by a low boy drop trailer.

Yes ☒ No ☐
Page # 7

DUMP CLEARANCE

The wheel loader dump clearance shall be no less than **8' 11"** at full height and 45 degree dump angle with a double arm Z bar configuration

Yes ☒ No ☐
Page # 7

STEERING

The wheel loader shall have a **40-degree** full turn articulation steering angle both right and left of center.

Yes ☒ No ☐
Page # 6

OPERATOR STATION

Cab shall be designed and built by the loader manufacturer.

Yes ☒ No ☐
Page # 11

Cab shall be enclosed and equipped with heater, air conditioner

Yes ☒ No ☐
Page # 11

Loader shall meet ROPS/FOPS regulations standard in North America.

Yes ☒ No ☐
Page # 11

Loader shall have easy to read gauges, gear selection, direction and RPM readings.

Yes ☒ No ☐
Page # 11

Loader shall have a standard hydraulic joystick which controls both lift and tilt functions. A remote transmission control switch on joystick to be standard.

Yes x No ✓
Page # 11

Loader shall have fully adjustable, air suspension seat.

Yes x No ✓
Page # 11

Loader shall be equipped with a Fire Extinguisher

Yes x No ✓
Page # 11

Loader shall have retractable 3" seat belt.

Yes x No
Page # 11

POWERTRAIN

Engine must have a minimum of **four(4)** cylinders and turbocharged and **designed and manufactured by machine manufacturer.**

Yes x No ✓
Page # 6

The loader shall be equipped with crankcase and powertrain guards.

Yes x No ✓
Page # 11

All powertrain components shall be designed and built by loader manufacturer.

Yes x No ✓
Page # 6

The engine shall have a minimum net HP of **166** at 1700 RPM with a minimum displacement of **276** cubic inches and **544** lbs./ft. torque.

Yes x No ✓
Page # 6

The engine shall meet all Tier 4/final emission requirements

Yes x No ✓
Page # 6

Loader shall have electronic module to control engine timing and monitoring of vital engine systems.

Yes x No ✓
Page # 6 & 11

Loader shall have fixed front axle with locking differential and oscillating rear axle ($\pm 11^\circ$) with open differential.

Yes x No ✓
Page # 11 & ATTACH

Loader shall have fully enclosed, adjustment free oil-disc brakes.

Yes x No ✓
Page # 6

Unit shall be equipped with 20.5 R25 L3 XHA2 tires.

Yes x No ✓
Page # 6

Loader shall have powershift transmission designed and built by manufacturer.
The loader shall have at minimum **4-forward/3** reverse with a minimum travel speed Forward of **24** mph and reverse of **15** mph.

Yes x No ✓
Page # 6

Loader shall have computer-controlled modulation for smoother shifting.

Yes x No ✓
Page # 6

Loader shall have manual shifting as well as auto shifting options. Auto shift will have full throttle (aggressive operation) and variable shift (economy mode) options.

Yes x No ✓
Page # 6

INSTRUMENTATION

The wheel loader shall include the following gauges: hour meter, fuel, transmission or torque converter oil temperature and engine coolant temperature.

Yes x No ✓
Page # 11

The wheel loader shall also include the following indicator lights: battery charge, engine oil pressure, low coolant level, parking brake warning, and low brake pressure.

Yes x No ✓
Page # 11

HYDRAULIC SYSTEM:

Shall have a minimum flow of **55** gallons/minute.

Yes x No ✓
Page # 6

WORK TOOLS

Bucket shall be designed and built by the loader manufacturer.

Yes x No ✓
Page # 7

Bucket shall be in 3.0 CYD capacity (with bolt-on cutting edges and teeth).

Yes x No ✓
Page # 7

SERVICEABILITY

All daily service points shall be accessible from the ground level and shall have sight gauges for radiator coolant, hydraulic oil and transmission oil.

Yes x No ✓
Page # ATTACH

All filters shall be vertically mounted and spin-on for ease of service and to prevent spilling during service

Yes x No ✓
Page # ATTACH

GENERAL

Unit shall be equipped with vandalism protection with locking service ports, cushioned steering stops, front fenders, and toolbox in addition to all other standard equipment.

Yes ☒ No ☐ ✓
Page # 11

OPERATING WEIGHT AND LIFT CAPACITIES

Unit shall be minimum of **28,559** lbs. operating and proper ballasting for **3.0** cubic yard bucket and 20.5-25 radial (L-3) tires.

Yes ☒ No ☐ ✓
Page # 7

Straight static tipping load shall be a minimum of **23,000** lbs.

Yes ☒ No ☐ ✓
Page # 7

Full turn (40°) static tipping load shall be a minimum of **19,500** lbs.

Yes ☒ No ☐ ✓
Page # 7

Breakout force shall be a minimum of **28,900** lbs.

Yes ☒ No ☐ ✓
Page # 7

544 P-Tier Wheel Loader



04-Nov-2025

Code	Description	QTY	List Price
6032DW	544 P-Tier Wheel Loader	1	US\$300,538.00 USD

544 P-tier Standard EquipmentPOWER TRAIN: Torque Converter-Power Shift TransmissionElectronically Controlled Fully Automated Shift System Quick Shift Button on Loader Control Lever with 2 Selectable ModesAutomatic / Manual Shift Modes Programmable Maximum High Gear Adaptive Clutch-Cutoff Clutch Calibration Engaged from Monitor 100% Locking Front and Conventional Rear Differentials with Inboard Mounted Heavy Duty Planetary Gears Heavy Duty Self Adjusting Front and Rear Power Brakes Electrically Actuated Automatic Spring Applied, Hydraulically Released, Wet Multi-Disc Park Brake Transmission Fill Tube and Sight Gauge 2000 Hour Transmission FilterCOOLING: Quad-Cool System: Heavy Duty, Trash Resistant Radiator and High Ambient Cooling Package 2 Side access to all Coolers Cooling System isolated from Engine Compartment Engine Radiator Integral Engine Oil Cooler Hydraulic Oil Cooler (Oil to Air) Transmission Oil Cooler (Oil to Air) Charge Air Cooler (Air to Air) Coolant Surge Tank Antifreeze, -34F (-37 C) Cool-on Demand Swing out Fan Enclosed Fan Safety GuardHYDRAULICS: Pressure compensating Load Sensing Hydraulic System 2 Function Hydraulic Joystick with FNR Control In Cab Adjustable Automatic Boom Height Kickout / Return To Carry /Return to Dig Hydraulic Function Enable/ Disable Hydraulic Reservoir with Sight Gauge and Fill Strainer 4000 Hour In-Tank FilterELECTRICAL: 24 Volt Electrical System Solid State Electrical Power Distribution System (2) Heavy Duty Batteries - each 950 Cold Cranking amps/190 minute Reserve Capacity Lockable Master Electrical Disconnect Switch Battery Terminal Safety Covers Pre-wired for Beacon/Strobe Light Lights: (2) Halogen Driving Lights with Guards (4) Front and (2) Rear Work Lights LED Turn Signals and Flashers LED Stop and Tail Lights Horn, Electric Reverse Warning Alarm Voltage Converter for 24V to 12V / 8 AmpsAlternator 140 Amp *New Touch screen & ability to display two applications simultaneously (ex. Camera & gauges)Multi-Function / Multi-Language LCD Color Monitor includes:DIGITAL DisplayHydraulic Oil Temperature Engine Coolant Temperature Transmission Oil Temperature SpeedometerEngine RPM Transmission Gear / Direction Indicator Fuel Level DEF Level Dynamic Status Bar:Engine Oil PressureHour MeterJob TimerOutside Temperature OdometerIndicator Lights for Standard and Selected Options Indicator Lights for Amber Caution and Red Stop Operator Warning Messages BUILT-IN DIAGNOSTICS: Diagnostic Code Details Sensor Values Calibrations Individual Circuit TesterMENU DISPLAY: Codes Machine Settings Diagnostics Monitor SettingsOPERATOR'S STATION: ROPS Quiet Cab with Heater and Air Conditioning Defroster and Pressurizer Front and Rear Intermittent Windshield Wipers and Washers (1) Inside and (2) Outside Rear View Mirrors Right Side Opening Windows Sun Visor Keyless Start with Multiple Security Modes Sealed Switch Module with Function Indicators Seat with Back Rest Extension, Deep Foam, Fabric Cover, Adjustable Air Suspension for Weight/Height with Fore-Aft Adjustment, and Adjustable Arm Rests Hydraulic Controls Integrated to Seat 3 Inch High Visibility Blaze Orange Seat Belt with Retractor (2) Cup Holders Lunch box (Cooler) Holder LED Dome and Reading Light 12 Volt Power Port Rubber Floor Mat Dual Tilt Steering ColumnTextured Steering Wheel with Spinner Knob Operator's Manual Storage Compartment Left Side Operator Station Access Slip-Resistant Steps and Ergonomically Located HandholdsOverall Vehicle: NeverGrease Rear Axle Oscillation Joints Front and Rear Tie Downs Front Fenders Rear Hitch with Locking Pin Articulation Locking Bar Boom Locking Bar 40 Degree Steering Articulation to Each Side with Rubber Cushion Stops on Frame Vandal Protection With Lockable Engine Enclosures, Right Counterweight Compartment, Battery Box, Filler Access for Radiator/Fuel/Hydraulic/Transmission Service Steps and Handholds Storage Compartment Fuel Tank Fill Strainer Heavy Duty Fuel Tank Guard Ground Level Fueling and DEFReady to Run with Engine coolant/Engine Oil/Transmission Oil/Hydraulic Oil level sensingTransmission Side Covers

Basic Factory Options - Required

Destination Code

0202	United States	No Added Cost
<hr/>		
Operator's Manual and Language		
0259	English	No Added Cost
English language for operator's manual and electronic content		
<hr/>		
0287	Spanish	No Added Cost
Spanish language for operator's manual and electronic content		
<hr/>		
Labels		
0351	Translated Text Labels	No Added Cost
Vehicle labels translated to selected language		
<hr/>		
Machine Configuration		
0400	Standard Loader	No Added Cost
<hr/>		
0402	Agriculture Material Handling	(US\$1,433.00)
The Agriculture Material Handler Package is a recommended configuration for loaders going into agricultural applications like feed lots of dairies.		
Requires the following:		
- Trim Package 2 or 3		
- Joystick Controls		
- Three Function Hydraulics		
- Axle Oil Cooling & Filtration		
- Debris Package		
- Maintenance and Service Package		
<hr/>		
Linkage Configuration		
0451	Standard Z-BAR	No Added Cost

0452	High Lift Z-BAR	US\$4,643.00
------	-----------------	--------------

Adds 11 inches (280 mm) height to bucket hinge pin, fully raised over standard linkage. Rated tipping load and lift capacity will be lower than unit equipped with the standard boom.

0453	High Lift Plus Z-BAR	US\$6,670.00
------	----------------------	--------------

Adds 23.6 inches (600 mm) height to bucket hinge pin, fully raised over standard linkage. Rated tipping load and lift capacity will be lower than unit equipped with the standard boom or high lift boom.

Trim Packages

0611	Level 1 Trim	No Added Cost
------	--------------	---------------

Includes:
- Flat Black Exhaust
- 145 Amp Alternator
- 8 Amp Converter
- Halogen Work and Drive Lights
- Deluxe Seat, Cloth with Air Suspension
- Less Ride Control

0612	Level 2 Trim	US\$6,223.00
------	--------------	--------------

Includes:
- Flat Black Exhaust
- 145 Amp Alternator
- 15 Amp Converter
- Halogen Work and Drive Lights
- Premium Seat, Heated and Ventilated with Heavy Duty Air Suspension
- Ride Control

0613	Level 3 Trim	US\$7,818.00
------	--------------	--------------

Includes:
- Flat Black Exhaust
- 145 Amp Alternator
- 15 Amp Converter
- LED Work and Drive Lights
- Premium Seat, Heated and Ventilated with Heavy Duty Air Suspension
- Ride Control

Performance Packages

0654	Level 1 Performance	No Added Cost
------	---------------------	---------------

This Package is recommended for machines that will be used on hard packed and well maintained surfaces.

Package includes:

- Locking Front Differential
- Standard Rear Differential
- Manual Diff Lock
- Less Throttle Lock
- Less Wheel Spin Control
- 5-Speed Powershift Transmission

0668	Level 2 Performance (Agriculture)	US\$3,135.00
------	-----------------------------------	--------------

This Package is recommended for machines that will be used in Agriculture applications.

Package includes:

- Locking Front Differential
- Locking Rear Differential
- Manual Diff Lock
- Less Throttle Lock
- Pile Slip Assist
- Wheel Spin Control
- 5-Speed Powershift Transmission

0656	Level 2 Performance	US\$4,658.00
------	---------------------	--------------

This Package is recommended for machines that will be used in unstable or unmaintained ground conditions doing V-pattern loading

Package includes:

- Locking Front Differential
- Locking Rear Differential
- Auto Diff Lock
- Less Throttle Lock
- Pile Slip Assist
- Wheel Spin Control
- 5-Speed Powershift Transmission

0658	Level 3 Performance	US\$4,385.00
------	---------------------	--------------

This Package is recommended for machines that will be used on hard packed and well maintained surfaces doing load and carry or stockpiling

Package includes:

- Locking Front Differential
- Standard Rear Differential
- Manual Diff Lock
- Throttle Lock
- Less Wheel Spin Control
- 5-Speed Powershift Transmission with Lock-up Torque Converter

0659	Level 4 Performance	US\$9,043.00
------	---------------------	--------------

This Package is recommended for machines that will be used in unstable or unmaintained ground conditions doing load and carry or stockpiling

Package includes:

- Locking Front Differential
 - Locking Rear Differential
 - Auto Diff Lock
 - Throttle Lock
 - Pile Slip Assist
 - Wheel Spin Control
 - 5-Speed Powershift Transmission with Lock-up Torque Converter
-

Vision System

0951	Rear Camera (Primary Display)	No Added Cost
------	-------------------------------	---------------

Rear camera with display integrated into monitor

0953	Advanced Vision System	US\$3,233.00
------	------------------------	--------------

Requires 10.1 IN (257mm) Secondary Display - G5

Two digital cameras are installed on the rearview mirror platforms to widen the field of view making the area beside the rear tires visible from the operator seat. These views, along with that of the rearview camera are integrated into a dedicated single display within the cab.

* For night time operation it is highly recommended to equip the machine with the LED lighting package (See Trim Packages)

0956	Rear Camera (Secondary Display)	No Added Cost
------	---------------------------------	---------------

Requires 10.1 IN (257mm) Secondary Display - G5
Rear camera with dedicated display

Detection System

1102	Advanced Object Detection	US\$2,530.00
------	---------------------------	--------------

Includes an object detection system (radar) that provides audible alerts when objects are detected at the rear of the machine. Also includes dynamic reversal projected path lines.
Requires 10.1 IN (257mm) Secondary Display - G5

1103	SmartDetect	US\$7,707.00
------	-------------	--------------

Provides visual and audible alerts to the operator, to increase situational awareness of people or objects around the machine.
Requires 10.1 IN (257mm) Secondary Display - G5

1100	Less Detection System	No Added Cost
Radio		
1200	Less Radio	(US\$540.00)
1205	Basic Package Radio	No Added Cost
1210	Premium Package Radio	US\$400.00
Operator's Station Steps		
1301	Left Side Steps	No Added Cost
1302	Left and Right Side Steps	US\$980.00
Not for use with Less Fenders and Rear Platforms option		
Connectivity Hardware		
183E	JDLink™	No Added Cost
Includes integrated cab wiring harness, antenna, and JDLink™ Modem (MTG).		
JDLink™ connectivity is enabled separately through the JDLink™ website. Connectivity service is subject to country availability.		
183N	JDLink™	No Added Cost

Includes integrated cab wiring harness, antenna, and JDLINK™ Modem (MTG).

JDLINK™ connectivity is enabled separately through the JDLINK™ website. Connectivity service is subject to country availability.

183Q	JDLINK™ Satellite	US\$3,215.00
------	-------------------	--------------

Includes integrated cab wiring harness, antenna, JDLINK™ Modem's (Cellular MTG & Satellite MTG).

JDLINK™ connectivity is enabled separately through the JDLINK™ website. Connectivity service is subject to country availability.

Fleet Health

1862	Level 2 Fleet Health	In Base Price
------	----------------------	---------------

Includes: Auto Active Warm Up, Auto Daily Fluid Checks, Fluid Loss Monitoring, Battery Health Monitoring, Mobile Alerts

Coming Soon: Remote Start & System Checks, Remote Systems Warm Up, Fleet Level Checks

Payload Scale

2205	SmartWeigh Ready + Trial	US\$930.00
------	--------------------------	------------

The 250-hour SmartWeigh trial period equips the loader with SmartWeigh components and software from the factory. Customers can then utilize the system for 250 machine hours. After 250 hours, the solution will be disabled but an option to fully purchase the software via a software only field kit is available. Payload weighing information is displayed on the primary machine monitor.

2206	SmartWeigh	US\$4,643.00
------	------------	--------------

SmartWeigh is a Deere designed and supported payload weighing solution that delivers accurate measurements, dynamic weighing capabilities, and is easy to calibrate. Payload weighing information is displayed on the primary machine monitor.

2201	Less Payload Scale w/ Cycle Counter	US\$126.00
------	-------------------------------------	------------

Models will be shipped payload scale ready.
A payload scale whole good field kit may be added at a later time.

Primary Display

2261	8 IN (203mm) Touchscreen Display	No Added Cost
	Secondary Display	
2300	Less Secondary Display	No Added Cost
2301	10.1 IN (257mm) Secondary Display - G5	US\$3,844.00
	Engine	
4065	John Deere 4.5L - FT4/SV	In Base Price
	John Deere Powertech PSS 4.5L Meets FT4/EU Stage V Emissions	
	Rear Hitch and Counterweights	
6522	Standard Hitch w/ Pin & Rear Counterweight	No Added Cost
6525	Detection System Ready Hitch w/ Pin & Rear Counterweight	US\$1,107.00
6520	Less Rear Hitch & Less Counterweight	(US\$1,122.00)
	Hydraulic Controls	
7025	Single Axis Lever Controls	US\$215.00
	Provides an individual hydraulic function control lever for the boom, bucket, and aux functions (if equipped).	
	* Only available for 2 function and 3 function hydraulics.	
7026	Joystick Controls	No Added Cost

Provides a single lever (joystick) control for the boom and the bucket.
Optional 3rd and 4th functions are controlled with proportional thumb rollers integrated in the joystick handle
(if equipped for applicable models).

Hydraulic Systems

7053	Two Function Hydraulics	No Added Cost
	Controls boom and bucket only.	

7054	Three Function Hydraulics	US\$2,377.00
	Controls boom, bucket, and adds an auxiliary function (w/ boom lines).	

7055	Four Function Hydraulics	US\$4,509.00
	Controls boom, bucket, and adds two auxiliary functions (w/ boom lines).	

Wheels and Tires

5100	Less Wheels & Tires	No Added Cost
------	---------------------	---------------

5123	Rims Less Tires - 20.5R25 w/ 3 PC Rims	US\$3,379.00
------	----------------------------------------	--------------

5110	Firestone SGG - 20.5-25 L2 16PR Bias Tires w/ 3 PC Rims	US\$13,968.00
------	---------------------------------------------------------	---------------

5114	Michelin XTLA - 20.5R25 L2 1-Star Radial Tires w/ 3 PC Rims	US\$23,036.00
------	-------------------------------------------------------------	---------------

5117	Michelin XSNOPUS - 20.5R25 L2 1-Star Radial Tires w/ 3 PC Rims	US\$21,261.00
------	----------------------------------------------------------------	---------------

5118	Continental EM-Master - 20.5R25 L3 1-Star Radial Tires w/ 3 PC Rims	US\$16,748.00
5120	Bridgestone VJT - 20.5R25 L3 1-Star Radial Tires w/ 3 PC Rims	US\$17,734.00
5121	No Brand Preference - 20.5R25 L3 1-Star Radial Tires w/ 3 PC Rims	US\$15,211.00
5315	Michelin XHA2 - 20.5R25 L3 1-Star Radial Tires w/ 3 PC Rims	US\$23,977.00
Fenders		
5552	Standard Front Fenders	No Added Cost
	Includes: - Standard width front fenders	
5553	Full Coverage Front Fenders	US\$341.00
	Includes: - Full width front fenders	
5554	Full Coverage Front & Rear Fenders w/ Mudflaps	US\$2,989.00
	Includes: - Full width front fenders - Full width rear fenders - Mudflaps	
5551	Less Fenders w/ Rear Platforms	No Added Cost
	Intended for severe applications like Wastehandling where fenders can be damaged.	

7408	Factory Pin-on Bucket Ready	No Added Cost
	For use when ordering factory installed pin-on buckets.	
7403	Hydraulic Coupler - JRB 416 Pattern	US\$8,407.00
7404	Hydraulic Coupler - Hi-Vis/ISO Pattern	US\$8,407.00
7407	Field Bucket Ready: Pins Only	US\$852.00
	For use with Field Installed Pin On Buckets	
	The pins shipped with the machine are compatible with Deere designed field installed pin-on buckets. Any other Buckets, Couplers, or Attachments must be reviewed prior to use.	
7405	Field Coupler Ready - Pin Disconnect Plumbing	US\$1,547.00
	For use with field installed Attachment couplers	
	Buckets	
7800	Less Bucket	No Added Cost
7813	2.50 YD (1.90 CM) Enhanced Performance	US\$9,155.00
	Bucket includes curved side cutters, integrated center section spill guard, and weld on skid shoes.	
7816	2.75 YD (2.10 CM) Enhanced Performance	US\$9,941.00
	Bucket includes curved side cutters, integrated center section spill guard, and weld on skid shoes.	
7822	3.00 YD (2.30 CM) Enhanced Performance	US\$10,699.00
	Bucket includes curved side cutters, integrated center section spill guard, and weld on skid shoes.	

7823	3.25 YD (2.50 CM) Enhanced Performance	US\$11,074.00
	Bucket includes curved side cutters, integrated center section spill guard, and weld on skid shoes.	
7827	3.50 YD (2.70 CM) Enhanced Performance	US\$11,867.00
	Bucket includes curved side cutters, integrated center section spill guard, and weld on skid shoes.	
7831	4.00 YD (3.10 CM) Light Material	US\$15,427.00
	Bucket includes curved side cutters, integrated center section spill guard, and weld on skid shoes.	
7836	4.50 YD (3.45 CM) Light Material	US\$16,851.00
	Bucket includes curved side cutters, integrated center section spill guard, and weld on skid shoes.	
7843	5.25 YD (4.00 CM) Light Material	US\$18,839.00
	Bucket includes curved side cutters, integrated center section spill guard, and weld on skid shoes.	
	Cutting Edges/Segments/Teeth	
7458	Bolt-On Cutting Edge	US\$1,052.00
7464	Teeth with Segments	US\$2,700.00
7465	Less Cutting Edge, Segments, and Teeth	No Added Cost
	Fork Frame	
7501	60 Inch (1524mm) Wide Fork Frame	US\$10,227.00

7503	96 Inch (2438mm) Wide Fork Frame	US\$13,581.00
7500	Less Fork Frame	No Added Cost
Fork Tines		
7701	48 Inch (1219mm) Construction Tines	US\$1,931.00
7702	60 Inch (1524mm) Construction Tines	US\$2,600.00
7703	72 Inch (1829mm) Construction Tines	US\$3,690.00
7700	Less Tines	No Added Cost

Basic Factory Options - Optional

COLD WEATHER PACKAGES - ORDER AS DESIRED

8500	Cold Weather Package	US\$526.00
------	----------------------	------------

This Package is recommended for machines that will spend extended periods of time working in colder environments

Package includes:

- Block Heater
- Hydrau XR Hydraulic Oil (provides all-season capability in ambient temperatures ranging from -40C to 40C (-40F to 104F))

* Selection of this package will also require the machine to be equipped with Heated and Powered Exterior Mirrors

8065	Cold Weather Starting	US\$259.00
	Includes: - Engine Block Heater	

8295	Heated And Powered Exterior Mirrors	US\$758.00
------	-------------------------------------	------------

DEBRIS PACKAGES - ORDER AS DESIRED

8501	Debris Package	US\$3,476.00
------	----------------	--------------

This Package is recommended for machines working in dusty or high debris applications.

Package includes:

- Automatic Reversing Hydraulic Fan
- Cab Fresh Air Precleaner
- Engine Air Intake System with Centrifugal Precleaner

8505	Guards - Transmission & Bottom	US\$2,167.00
------	--------------------------------	--------------

MAINTENANCE AND SERVICE PACKAGES - ORDER AS DESIRED

8502	Maintenance and Service Package	US\$629.00
------	---------------------------------	------------

Package includes:

- Engine Compartment Light
- Environmental Drain

AUXILIARY EQUIPMENT PACKAGES - ORDER AS DESIRED

8508	Auxiliary Equipment Package	US\$1,193.00
------	-----------------------------	--------------

Package includes:

- Beacon Lights (Amber, installed on the top corners of the cab)
- Seat Belt Indicator Beacon Light (Green)
- Fire Extinguisher
- Slow Moving Vehicle Emblem
- License Plate Bracket

8205	Four Point Seat Belt	US\$844.00
------	----------------------	------------

8213	Chrome Curved Stack	US\$711.00
<hr/>		
AXLE COOLING - ORDER AS DESIRED		
8042	Axle Oil Cooling and Filtration	US\$2,885.00
<hr/>		
Operator's Station-Order As Desired		
8210	Secondary Steering	US\$2,977.00
<p>Secondary Steering is NOT Joystick Steering Control. Secondary steering is used in the event of a failure of the normal steering power source(s), or if engine shuts down while the machine is in motion and allows temporary steering of the machine by using an electric motor powered steering pump or a ground driven steering pump (depending on loader model) to provide temporary hydraulic pressure and flow to the steering cylinders.</p>		
<hr/>		
No Tire Brand Preference - Order As Desired		
9709	20.5R25 L3 1-Star Radial Tires w/ 3 PC Rims - No Brand Preference	No Added Cost
<hr/>		
Miscellaneous - Order As Desired		
8082	Electrical Corrosion Prevention Package	US\$1,518.00
<p>Preventive corrosion treatment for use in corrosive environments. Preventive corrosion treatment includes dielectric grease for electrical connections and polyurethane-based sealant on exposed terminals.</p>		
<hr/>		
8154	Lift Hooks	US\$479.00
<hr/>		
8039	Non-Export Rust Preventive Coating	US\$250.00
<p>Coating protects exposed unpainted surfaces from road salt during shipment.</p>		
<hr/>		

Field Installed Attachments - Optional

G.R.Mfg.

BYT11094	Articulation Joint Guards	US\$2,728.00
BYT11095	Axle Seal Guards	US\$1,536.00
BYT11097	Heavy-Duty Service Cab Entry Step	US\$1,236.00
BYT13933	Heavy-Duty Rear Grille Guard	US\$3,505.00
BYT14202	Front Screen for Cab Kit	US\$3,624.00
BYT14203	Cab Side and Rear Enclosure Pkg Kit	US\$6,556.00
BYT14205	Rear Tire Deflectors Kit	US\$8,056.00
BYT14210	Hyd Operated Extreme Duty Bottom Guards Kit	US\$8,349.00
BYT14212	Boom Cavity Guard Kit	US\$4,680.00
BYT14204	Grill Guard Kit	US\$3,105.00

Hydraulic Couplers

BYT12697	Attachment Coupler Plumbing Kit - Standard Z-Bar Linkage	US\$472.00
BYT13723	Hydraulic Coupler - JRB 416 Pattern	US\$8,083.00
BYT13724	Hydraulic Coupler - Hi-Vis/ISO Pattern	US\$8,083.00
AT315871	Coupler Attachment Adapter Hook Plates (2) Standard	US\$2,193.00
AT330639	Coupler Attachment Adapter Hook Plates, (2) Hi-Vis	US\$2,172.00
BYT11246	3rd Function Plumbing from Boom to Coupler	US\$207.00
BYT11244	Cable Reinforced Coupler Plumbing kit	US\$218.00
BYT11245	Cable Reinforced Coupler Plumbing kit - Hi-Vis/ISO	US\$368.00
BYT12690	Hydraulic Control Valve for Attachment Coupler Locking Pins	US\$899.00
BYT12695	Attachment Coupler Plumbing Kit - High Lift Linkage	US\$472.00

BYT12700	Attachment Coupler Plumbing Kit - High Lift Plus Linkage	US\$472.00
<hr/>		
	Trim Package	
BYT14227	Ride Control Kit	US\$4,563.00
<hr/>		
BYT14258	Premium Radio Kit	US\$983.00
<hr/>		
	Miscellaneous	
BYT14127	CAN Vehicle Gateway Device	US\$465.00
<hr/>		
	Hydraulics/Controls	
BYT11268	3rd Function Single Axis Lever	US\$318.00
<hr/>		
BYT14119	Multi Axis Lever to 2 Single Axis Lever Kit	US\$1,550.00
<hr/>		
BYT14120	Multi Axis Lever w/ AUX to 3 Single Axis Lever Kit	US\$1,850.00
<hr/>		
BYT14121	Multi Axis Lever w/ AUX to Multi Axis Lever w/ Additional AUX (4th, 5th, 6th) Kit	US\$1,212.00
<hr/>		
BYT14122	Single Axis Levers to Multi Axis Lever w/ Additional AUX (4th, 5th, 6th) Kit	US\$1,559.00

BYT14123	Single Axis Levers to Multi Axis Lever w/ AUX Kit	US\$1,253.00
BYT14220	3rd Function Hydraulics (Z-BAR) Kit	US\$6,304.00
BYT14222	4th Function Hydraulics Kit (Z-BAR)	US\$6,100.00
BYT14224	5th or 6th Function Hydraulics Kit	US\$6,600.00
BYT14117	Add Steering Column FNR Kit	US\$402.00
Mainframe/Structures		
BYT13128	Battery Box, Steel Extreme Conditions	US\$821.00
Fenders		
BYT11851	Right Side Steps and Handholds with Mudflaps	US\$895.00
BYT14172	Full Coverage Front and Rear Fenders with Mudflaps Kit	US\$2,602.00
Buckets		
BYT13747	2.5 Cu. Yd. Hi-Vis Coupler Bucket w/ Cutting Edge	US\$9,357.00

BYT13748	2.75 Cu. Yd. Hi-Vis Coupler Bucket w/ Cutting Edge	US\$10,021.00
BYT13749	3.0 Cu. Yd. Hi-Vis Coupler Bucket w/ Cutting Edge	US\$10,664.00
BYT13750	3.25 Cu. Yd. Hi-Vis Coupler Bucket w/ Cutting Edge	US\$11,152.00
BYT13751	3.5 Cu. Yd. Hi-Vis Coupler Bucket w/ Cutting Edge	US\$11,827.00
BYT13741	2.5 Cu. Yd. Std. Coupler Bucket w/ Cutting Edge	US\$9,357.00
BYT13742	2.75 Cu. Yd. Std. Coupler Bucket w/ Cutting Edge	US\$10,021.00
BYT13743	3.0 Cu. Yd. Std. Coupler Bucket w/ Cutting Edge	US\$10,664.00
BYT13744	3.25 Cu. Yd. Std. Coupler Bucket w/ Cutting Edge	US\$11,152.00
BYT13745	3.5 Cu. Yd. Std. Coupler Bucket w/ Cutting Edge	US\$11,827.00
BYT13736	2.75 Cu. Yd. YD Pin-on Bucket w/ Cutting Edge	US\$10,021.00
BYT13737	3.0 Cu. Yd. YD Pin-on Bucket w/ Cutting Edge	US\$10,664.00

BYT13738	3.25 Cu. Yd. YD Pin-on Bucket w/ Cutting Edge	US\$11,152.00
BYT13740	3.75 Cu. Yd. YD Pin-on Bucket w/ Cutting Edge	US\$12,857.00
BYT10778	4.00 Cu. Yd. Hi-Vis Coupler Light Material w/ Cutting Edge	US\$14,834.00
BYT10779	4.00 Cu. Yd. Std. Coupler Light Material w/ Cutting Edge	US\$14,834.00
BYT10777	4.50 Cu. Yd. Hi-Vis Coupler Light Material w/ Cutting Edge	US\$16,038.00
BYT10780	4.50 Cu. Yd. Std. Coupler Light Material w/ Cutting Edge	US\$16,038.00
BYT10776	5.25 Cu. Yd. Hi-Vis Coupler Light Material w/ Cutting Edge	US\$17,723.00
BYT10781	5.25 Cu. Yd. Std. Coupler Light Material w/ Cutting Edge	US\$17,723.00
Auxiliary Equipment Package		
BYT14104	Seat Belt Minder Kit	US\$530.00
BYT14109	License Plate Light and Bracket	US\$165.00

Operator Station

BYT14228	Secondary Steering Kit	US\$2,645.00
----------	------------------------	--------------

BYT14114	24V Aux Electrical Output Kit	US\$179.00
----------	-------------------------------	------------

Debris Package

BYT14115	Cab Fresh Air Pre-Cleaner	US\$878.00
----------	---------------------------	------------

BYT14230	Automatic Reversing Hydraulic Fan Kit	US\$1,661.00
----------	---------------------------------------	--------------

Maintenance and Service Package

BYT14108	Engine Compartment Light Kit	US\$178.00
----------	------------------------------	------------

Payload Scale

BYT14093	SmartWeigh Kit (Hardware Only) for Machines with Standard Z-Bar Linkage Configuration	US\$784.00
----------	---------------------------------------------------------------------------------------	------------

BYT14094	SmartWeigh Kit (Hardware Only) for Machines with High Lift Z-Bar Linkage Configuration	US\$784.00
----------	----------------------------------------------------------------------------------------	------------

BYT14097	SmartWeigh Kit (Hardware Only) for Machines with High Lift Plus Z-Bar Linkage Configuration	US\$784.00
----------	---------------------------------------------------------------------------------------------	------------

AT567478	SmartWeigh Kit (Software Only)	US\$4,164.28
----------	--------------------------------	--------------

Powertrain & Cooling

BYT12937	Axle Cooling and Filtration	US\$3,027.00
----------	-----------------------------	--------------

Manufacturer's Suggested List Price shown. Retail prices may vary by dealer. Unless stated otherwise, taxes, freight, setup, delivery and other dealer specific charges not included in the pricing. Options/items noted with anything other than price will have additional costs. Pricing, availability, and specifications subject to change without notice. Special program pricing may be available on certain models. See dealer for details. Prices are shown in USD unless otherwise noted.

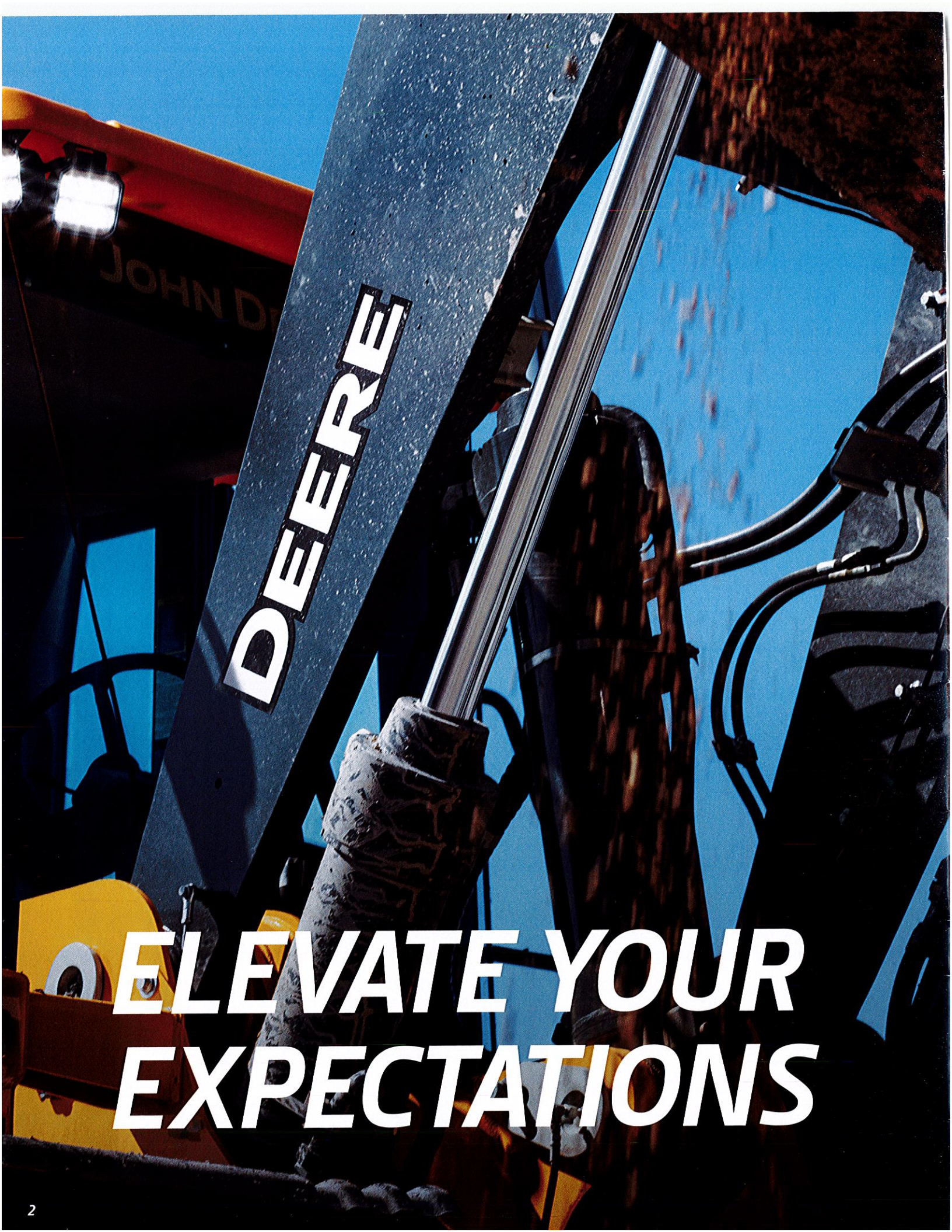
544 P

Wheel Loader



JOHN DEERE





DEERE

**ELEVATE YOUR
EXPECTATIONS**

ABOVE AND BEYOND

MEET THE P-TIER WHEEL LOADERS

When your material-handling application needs a heavy-duty lift, add a P-Tier Wheel Loader to your lineup. Combining convenient front-end features with near-parallel lift, spacious operator stations including customizable ergonomic electrohydraulic (EH) controls, and streamlined electrical and hydraulic routing, these versatile and productive mid-size models are designed to help you take your operation to the next level.



**INTUITIVE
CONTROLS**

Take control

Operators can easily control up to six functions without letting go of the ergonomically designed joystick. Two industry-exclusive multifunction buttons can each be programmed to handle any of up to 10 functions selected through the monitor, including bucket vibrate and EH Precision mode.

The bucket list

A wide selection of enhanced production buckets with integrated spill guards, curved side cutters, and impressive rollback delivers elevated bucket-fill performance and material retention compared to earlier offerings.

At the forefront

Featuring bucket and linkage designs that improve load leveling, material retention, and visibility, these loaders yield more productivity and performance than previous models.

Remote diagnostics and support

To maximize uptime and lower costs, JDLink™ connectivity provides machine location, utilization data, and alerts to help you maximize productivity and efficiency. JDLink also enables John Deere Connected Support™. Dealers use Expert Alerts based on data from thousands of connected machines to proactively address conditions that may otherwise likely lead to downtime. Your dealer can also monitor machine health and leverage remote diagnostics and programming capability to further diagnose problems and even update machine software without a time-consuming trip to the jobsite.*

*Availability varies by region.
Options not available in every country.

It's easy to see

Large seven-inch in-cab display with easy-on-the-eyes clarity enables intuitive push-button access to key info. Standard rearview camera displays the activity behind the machine on the color LCD screen.

On your side

All daily service points including fuel refill are conveniently grouped at ground level on the left side of the machine for easy access. Routing of electrical wire harnesses and hydraulic hoses has been streamlined.



OVERACHIEVERS

ASPIRE TO GO HIGHER.

With handy front-end features and plenty of productivity-boosting enhancements over previous models, our 544 P-Tier Wheel Loader redefines expectations about the heights a utility loader can reach.



Have a seat

Spacious and comfortable cab features extra legroom, an improved HVAC system, additional storage, and a more adjustable seat than earlier models.



Smooth operator

Seat-mounted right-hand joystick features two programmable multifunction buttons and electrohydraulic (EH) controls that are more intuitive to operate compared to our K-Series controls.



Near-parallel lift

Lift path on Z-Bar linkage is near parallel. Better load-leveling capability compared to K-Series models minimizes load rollback, reduces material spillage, and requires fewer manual adjustments. Cross-tube and boom geometry of the Z-Bar linkage has been streamlined to provide a better view to the front attachment.



Pretty big plus

High-Lift Plus configuration provides an additional 24 inches of hinge-pin height over standard lift height and 12 inches over the High-Lift model. All three lift heights feature near-parallel lift.



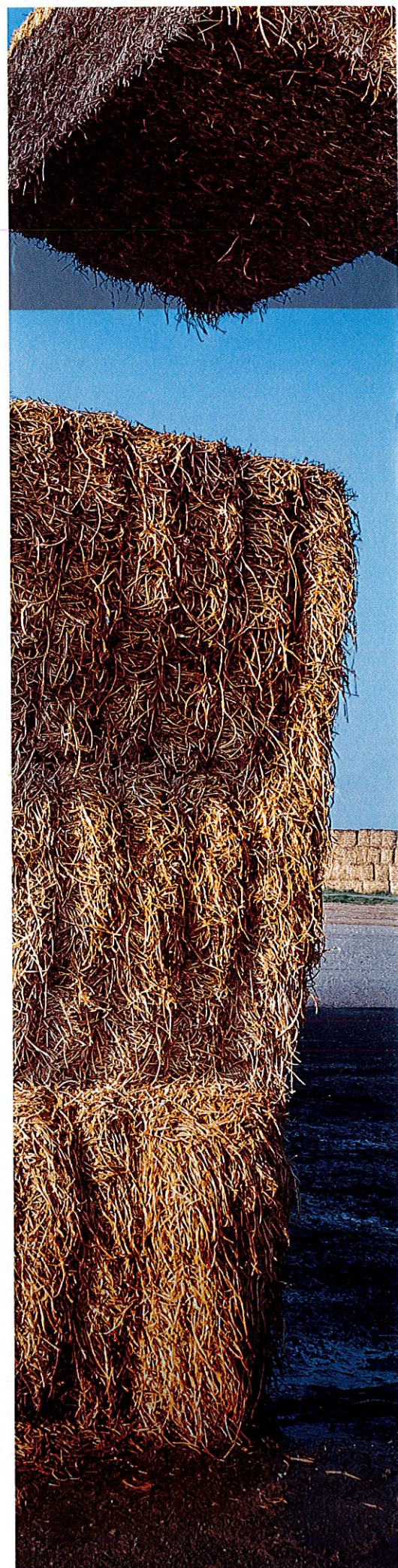
Clear advantage

Improved visibility to the work tool helps reduce spillage as well as cycle and tool-changeover times. It also helps minimize machine damage when working on crowded jobsites or up against walls.



Step it up

Quad-Cool™ places the radiator, air-conditioner condenser, intercooler, and hydraulic, transmission, and optional axle coolers in a unique boxed configuration that's isolated from engine heat, boosting efficiency and durability.





544 P

WHEEL LOADER

3" MORE LEGROOM
THAN K-SERIES CABS



544 P-TIER WHEEL LOADER SPECIFICATIONS

While general information, pictures, and descriptions are provided, some illustrations and text may include product options and accessories NOT AVAILABLE in all regions, and in some countries products and accessories may require modifications or additions to ensure compliance with the local regulations of those countries.

544 P-TIER Z-BAR / HIGH-LIFT / HIGH-LIFT PLUS						
Engine	John Deere PowerTech™ PVS 6068		Gross Peak Torque (ISO 9249)		770 Nm (568 ft.-lb.) at 1,600 rpm	
Manufacturer and Model	EPA Final Tier 4/EU Stage V		Net Torque Rise		47%	
Non-Road Emission Standard	6		Fuel System (electronically controlled)		High-pressure common rail	
Cylinders	4		Lubrication		Full-flow spin-on filter and integral cooler	
Valves Per Cylinder	6.8 L (414 cu. in.)		Aspiration		Turbocharged, charge air cooled	
Displacement	123 kW (166 hp) at 1,700 rpm		Air Cleaner		Under-hood, dual-element dry type, restriction indicator in cab monitor for service	
Net Peak Power (ISO 9249)	130 kW (174 hp) at 1,700 rpm					
Gross Peak Power (ISO 9249)	740 Nm (546 lb.-ft.) at 1,100 rpm					
Net Peak Torque (ISO 9249)						
Cooling						
Fan Drive	Hydraulically driven, proportionally controlled, fan aft of coolers					
Electrical						
Electrical System	24 volt with 100-amp alternator (optional 130-amp alternator)					
Batteries (2 – 12 volt)	950 CCA (each)					
Transmission System						
Type	Countershaft-type PowerShift™					
Torque Converter	Single stage, single phase					
Shift Control	Electronically modulated, adaptive, load and speed dependent					
Operator Interface	Steering-column or joystick-mounted F-N-R and gear-select lever; kick-down button on hydraulic lever					
Shift Modes	Manual/auto (1st-D or 2nd-D); Quick-Shift button with 2 selectable modes: kick-down or kick-up/down; and 4 clutch cutoff settings					
	Standard 5-Speed With Lockup Torque Converter		Optional 5-Speed Without Lockup Torque Converter			
Maximum Travel Speeds (with 20.5 R 25 tires)	Forward	Reverse	Forward	Reverse		
Range 1	6.1 km/h (3.7 mph)	5.9 km/h (3.6 mph)	5.6 km/h (3.5 mph)	6.0 km/h (3.7 mph)		
Range 2	12.0 km/h (7.4 mph)	12.7 km/h (7.8 mph)	11.2 km/h (7.0 mph)	11.9 km/h (7.3 mph)		
Range 3	18.6 km/h (11.5 mph)	29.4 km/h (18.3 mph)	17.4 km/h (10.8 mph)	27.6 km/h (17.1 mph)		
Range 4	27.9 km/h (17.3 mph)	N/A	26.2 km/h (16.2 mph)	N/A		
Range 5	40.0 km/h (24.8 mph)	N/A	40.0 km/h (24.8 mph)	N/A		
Axles/Brakes						
Final Drives	Heavy-duty inboard-mounted planetary					
Differentials	Hydraulic locking front with conventional rear — standard; dual locking front and rear — optional					
Rear Axle Oscillation, Stop to Stop (with 20.5 R 25 tires)	24 deg. (12 deg. each direction)					
Brakes (conform to ISO 3450)						
Service	Hydraulically actuated, spring-retracted, self-adjusting inboard sun-shaft mounted, oil cooled, single disc					
Parking	Automatic spring applied, hydraulically released, driveline mounted, sealed wet multi disc					
Tires/Wheels (see page 9 for complete tire adjustments)						
	Tread Width		Width Over Tires			
Michelin 20.5 R 25, 1 Star L-3 XHA2	1950 mm (76.8 in.)		2546 mm (100.2 in.)			
Serviceability						
Refill Capacities			Refill Capacities (continued)			
Fuel Tank (with lockable cap)	298 L (79 gal.)		Axle Oil (each)			
Cooling System	29.9 L (31.6 qt.)		Front			16.6 L (17.5 qt.)
Diesel Exhaust Fluid (DEF)	15.6 L (16.5 qt.)		Rear			18 L (19 qt.)
Engine Oil With Vertical Spin-On Filter	19.5 L (20.6 qt.)		Hydraulic Reservoir and Filter			82.1 L (21.7 gal.)
Transmission Reservoir With Vertical Filter	21 L (22.2 qt.)		Park Brake Oil (wet disc)			0.3 L (10 oz.)
Hydraulic System/Steering						
Pump (loader and steering)	Variable-displacement, axial-piston pump; closed-center, pressure-compensating system					
Maximum Rated Flow at 6895 kPa (1,000 psi) and 2,200 rpm	220 L/m (58 gpm)					
System Relief Pressure (loader and steering)	25 166 kPa (3,650 psi)					
Loader Controls	2-function valve, joystick control or fingertip controls, hydraulic-function enable/disable, optional 3rd- and 4th-function valve with auxiliary lever					
Steering (conforms to ISO 5010)	Steering-column-mounted, twist-grip shift lever; Quick-Shift button on hydraulic lever					
Type	Power, fully hydraulic					
Articulation Angle	80-deg. arc (40 deg. each direction)					
Turning Radius (measured to centerline of outside tire)	5.0 m (16 ft. 5 in.)					



While general information, pictures, and descriptions are provided, some illustrations and text may include product options and accessories NOT AVAILABLE in all regions, and in some countries products and accessories may require modifications or additions to ensure compliance with the local regulations of those countries.

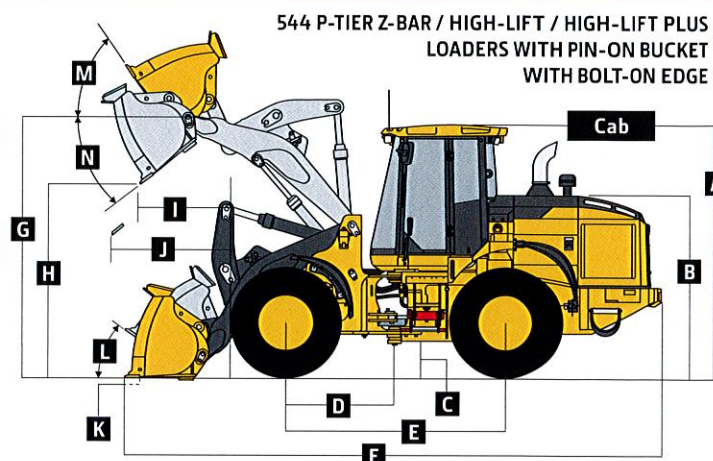
Hydraulic System/Steering (continued) 544 P-TIER Z-BAR / HIGH-LIFT / HIGH-LIFT PLUS

Hydraulic Cycle Times	Z-Bar / High-Lift / High-Lift Plus
Raise	5.5 sec.
Dump	2.2 sec.
Lower (power down)	3.5 sec.
Total	11.2 sec.

Bucket Capacity Range

Bucket Type	
Pin-On	2.1–2.5 m ³ (2.75–3.25 cu. yd.)
Coupler	1.9–4.0 m ³ (2.5–5.25 cu. yd.)

Dimensions and Specifications With Pin-On Bucket With Bolt-On Edge



	Z-Bar 2.3-m ³ (3.0 cu. yd.) general purpose	Z-Bar 2.5-m ³ (3.25 cu. yd.) general purpose	High-Lift 2.1-m ³ (2.75 cu. yd.) general purpose	High-Lift 2.3-m ³ (3.0 cu. yd.) general purpose	High-Lift Plus 2.1-m ³ (2.75 cu. yd.) general purpose	High-Lift Plus 2.3-m ³ (3.0 cu. yd.) general purpose
A Height to Top of Cab	3.33 m (10 ft. 11 in.)	3.33 m (10 ft. 11 in.)	3.33 m (10 ft. 11 in.)	3.33 m (10 ft. 11 in.)	3.33 m (10 ft. 11 in.)	3.33 m (10 ft. 11 in.)
B Hood Height	2.375 m (7 ft. 9 in.)	2.375 m (7 ft. 9 in.)	2.375 m (7 ft. 9 in.)	2.375 m (7 ft. 9 in.)	2.375 m (7 ft. 9 in.)	2.375 m (7 ft. 9 in.)
C Ground Clearance	0.40 m (15.7 in.)	0.40 m (15.7 in.)	0.40 m (15.7 in.)	0.40 m (15.7 in.)	0.40 m (15.7 in.)	0.40 m (15.7 in.)
D Length From Centerline to Front Axle	1.45 m (4 ft. 9 in.)	1.45 m (4 ft. 9 in.)	1.45 m (4 ft. 9 in.)	1.45 m (4 ft. 9 in.)	1.45 m (4 ft. 9 in.)	1.45 m (4 ft. 9 in.)
E Wheelbase	2.93 m (9 ft. 7 in.)	2.93 m (9 ft. 7 in.)	2.93 m (9 ft. 7 in.)	2.93 m (9 ft. 7 in.)	2.93 m (9 ft. 7 in.)	2.93 m (9 ft. 7 in.)
F Overall Length, Bucket on Ground	7.49 m (24 ft. 7 in.)	7.49 m (24 ft. 7 in.)	7.80 m (25 ft. 7 in.)	7.88 m (25 ft. 10 in.)	8.17 m (26 ft. 10 in.)	8.25 m (27 ft. 1 in.)
G Height to Hinge Pin, Fully Raised	3.89 m (12 ft. 9 in.)	3.89 m (12 ft. 9 in.)	4.17 m (13 ft. 8 in.)	4.17 m (13 ft. 8 in.)	4.49 m (14 ft. 9 in.)	4.49 m (14 ft. 9 in.)
H Dump Clearance, 45 deg., Full Height	2.80 m (9 ft. 2 in.)	2.80 m (9 ft. 2 in.)	3.14 m (10 ft. 4 in.)	3.09 m (10 ft. 2 in.)	3.47 m (11 ft. 4 in.)	3.41 m (11 ft. 2 in.)
I Reach, 45-deg. Dump, Full Height	1.01 m (3 ft. 4 in.)	1.01 m (3 ft. 4 in.)	1.09 m (3 ft. 7 in.)	1.14 m (3 ft. 9 in.)	1.13 m (3 ft. 8 in.)	1.19 m (3 ft. 11 in.)
J Reach, 45-deg. Dump, 2.13-m (7 ft. 0 in.) Clearance	1.51 m (4 ft. 11 in.)	1.51 m (4 ft. 11 in.)	1.81 m (5 ft. 11 in.)	1.84 m (6 ft. 0 in.)	2.10 m (6 ft. 11 in.)	2.14 m (7 ft. 0 in.)
K Maximum Digging Depth	0.1 m (4 in.)	0.1 m (4 in.)	0.19 m (8 in.)	0.2 m (8 in.)	0.2 m (8 in.)	0.2 m (8 in.)
L Maximum Rollback at Ground Level	44 deg.	44 deg.	48 deg.	48 deg.	49 deg.	49 deg.
M Maximum Rollback, Boom Fully Raised	60 deg.	60 deg.	60 deg.	60 deg.	61 deg.	61 deg.
N Maximum Bucket Dump Angle, Fully Raised	48 deg.	48 deg.	46 deg.	46 deg.	45 deg.	45 deg.
Loader Clearance Circle, Bucket Carry Position	11.46 m (37 ft. 7 in.)	11.58 m (38 ft. 0 in.)	11.68 m (38 ft. 4 in.)	11.70 m (38 ft. 5 in.)	12.16 m (39 ft. 11 in.)	12.20 m (40 ft. 0 in.)
Specifications With Bucket With Bolt-On Edge						
Capacity, Heaped	2.3 m ³ (3.0 cu. yd.)	2.5 m ³ (3.25 cu. yd.)	2.1 m ³ (2.75 cu. yd.)	2.3 m ³ (3.0 cu. yd.)	2.1 m ³ (2.75 cu. yd.)	2.3 m ³ (3.0 cu. yd.)
Capacity, Struck	1.9 m ³ (2.5 cu. yd.)	2.1 m ³ (2.7 cu. yd.)	1.7 m ³ (2.3 cu. yd.)	1.9 m ³ (2.5 cu. yd.)	1.7 m ³ (2.3 cu. yd.)	1.9 m ³ (2.5 cu. yd.)
Bucket Weight With Bolt-On Cutting Edge	1095 kg (2,415 lb.)	1131 kg (2,493 lb.)	1056 kg (2,327 lb.)	1095 kg (2,415 lb.)	1056 kg (2,327 lb.)	1095 kg (2,415 lb.)
Bucket Width	2.54 m (8 ft. 4 in.)	2.68 m (8 ft. 10 in.)	2.55 m (8 ft. 4 in.)	2.54 m (8 ft. 4 in.)	2.55 m (8 ft. 4 in.)	2.54 m (8 ft. 4 in.)
Breakout Force	13 166 kg (29,026 lb.)	13 145 kg (28,979 lb.)	13 983 kg (30,827 lb.)	13 005 kg (28,672 lb.)	14 138 kg (31,168 lb.)	13 149 kg (28,988 lb.)
Tipping Load, Straight, No Tire Deflection	11 139 kg (24,557 lb.)	11 097 kg (24,464 lb.)	9699 kg (21,384 lb.)	9591 kg (21,145 lb.)	8630 kg (19,026 lb.)	8537 kg (18,820 lb.)
Tipping Load, Straight, With Tire Deflection	10 533 kg (23,221 lb.)	10 491 kg (23,129 lb.)	9231 kg (20,351 lb.)	9120 kg (20,106 lb.)	8244 kg (18,175 lb.)	8145 kg (17,957 lb.)
Tipping Load, 40-deg. Full Turn, No Tire Deflection	9653 kg (21,281 lb.)	9612 kg (21,190 lb.)	8374 kg (18,460 lb.)	8274 kg (18,241 lb.)	7410 kg (16,336 lb.)	7323 kg (16,145 lb.)
Tipping Load, 40-deg. Full Turn, With Tire Deflection	8865 kg (19,544 lb.)	8823 kg (19,451 lb.)	7755 kg (17,097 lb.)	7650 kg (16,865 lb.)	6891 kg (15,192 lb.)	6807 kg (15,007 lb.)
Rated Operating Load, 50% Full-Turn Tipping Load, No Tire Deflection (conforms to ISO 14397-1)*	4827 kg (10,641 lb.)	4806 kg (10,595 lb.)	4187 kg (9,230 lb.)	4137 kg (9,120 lb.)	3705 kg (8,168 lb.)	3662 kg (8,073 lb.)
Rated Operating Load, 50% Full-Turn Tipping Load, With Tire Deflection (conforms to ISO 14397-1)*	4433 kg (9,772 lb.)	4412 kg (9,726 lb.)	3878 kg (8,548 lb.)	3825 kg (8,433 lb.)	3446 kg (7,596 lb.)	3404 kg (7,503 lb.)
Operating Weight	13 844 kg (30,520 lb.)	13 879 kg (30,598 lb.)	13 992 kg (30,847 lb.)	14 032 kg (30,935 lb.)	14 178 kg (31,257 lb.)	14 218 kg (31,345 lb.)

Loader operating information is based on machine with identified linkage and standard equipment, PowerTech PVS 6068 (EPA Final Tier 4/EU Stage VI) engine, ROPS cab, rear cast bumper/counterweight, transmission side-frame guards, bottom guards, standard tires, full fuel tank, and 79-kg (175 lb.) operator. This information is affected by changes in tires, ballast, and different attachments.

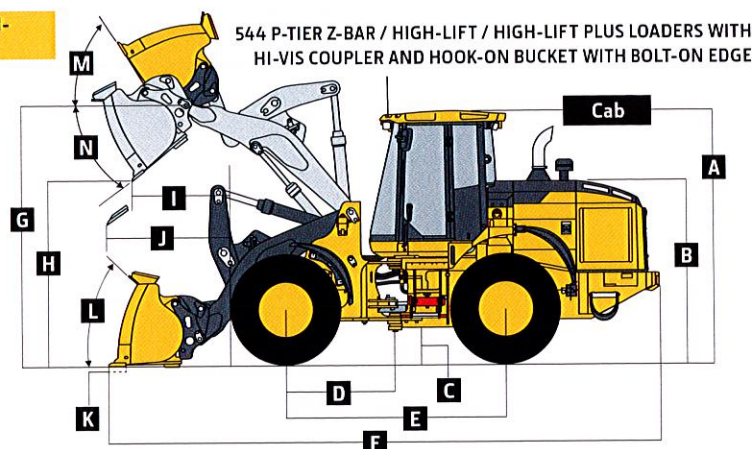
*Rated operating capacity based on Deere attachments only.

544 P-TIER

While general information, pictures, and descriptions are provided, some illustrations and text may include product options and accessories NOT AVAILABLE in all regions, and in some countries products and accessories may require modifications or additions to ensure compliance with the local regulations of those countries.

Dimensions and Specifications With Hi-Vis Coupler and Hook-On Bucket With Bolt-On Edge

544 P-TIER Z-BAR / HIGH-LIFT / HIGH-LIFT PLUS

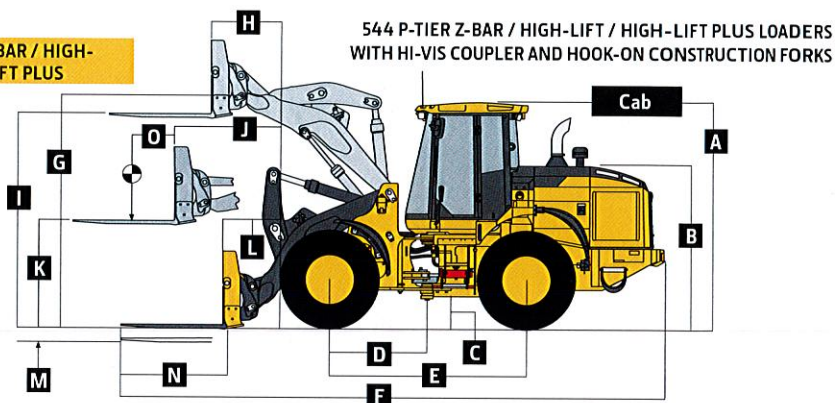


	Z-Bar	Z-Bar	Z-Bar	High-Lift	High-Lift	High-Lift	High-Lift Plus	High-Lift Plus
	2.3-m ³	2.5-m ³	3.4-m ³	2.1-m ³	2.3-m ³	3.1-m ³	1.9-m ³	3.1-m ³
	(3.0 cu. yd.)	(3.25 cu. yd.)	(4.5 cu. yd.)	(2.75 cu. yd.)	(3.0 cu. yd.)	(4.0 cu. yd.)	(2.5 cu. yd.)	(4.0 cu. yd.)
Dimensions With Bucket With Bolt-On Edge (Illustration above right)								
A Height to Top of Cab	3.33 m (10 ft. 11 in.)	3.33 m (10 ft. 11 in.)	3.33 m (10 ft. 11 in.)	3.33 m (10 ft. 11 in.)	3.33 m (10 ft. 11 in.)	3.33 m (10 ft. 11 in.)	3.33 m (10 ft. 11 in.)	3.33 m (10 ft. 11 in.)
B Hood Height	2.375 m (7 ft. 9 in.)	2.375 m (7 ft. 9 in.)	2.375 m (7 ft. 9 in.)	2.375 m (7 ft. 9 in.)	2.375 m (7 ft. 9 in.)	2.375 m (7 ft. 9 in.)	2.375 m (7 ft. 9 in.)	2.375 m (7 ft. 9 in.)
C Ground Clearance	0.40 m (15.7 in.)	0.40 m (15.7 in.)	0.40 m (15.7 in.)	0.40 m (15.7 in.)	0.40 m (15.7 in.)	0.40 m (15.7 in.)	0.40 m (15.7 in.)	0.40 m (15.7 in.)
D Length From Centerline to Front Axle	1.45 m (4 ft. 9 in.)	1.45 m (4 ft. 9 in.)	1.45 m (4 ft. 9 in.)	1.45 m (4 ft. 9 in.)	1.45 m (4 ft. 9 in.)	1.45 m (4 ft. 9 in.)	1.45 m (4 ft. 9 in.)	1.45 m (4 ft. 9 in.)
E Wheelbase	2.93 m (9 ft. 7 in.)	2.93 m (9 ft. 7 in.)	2.93 m (9 ft. 7 in.)	2.93 m (9 ft. 7 in.)	2.93 m (9 ft. 7 in.)	2.93 m (9 ft. 7 in.)	2.93 m (9 ft. 7 in.)	2.93 m (9 ft. 7 in.)
F Overall Length, Bucket on Ground	7.56 m (24 ft. 10 in.)	7.64 m (25 ft. 1 in.)	7.83 m (25 ft. 8 in.)	7.95 m (26 ft. 1 in.)	7.95 m (26 ft. 1 in.)	8.08 m (26 ft. 6 in.)	8.23 m (27 ft. 0 in.)	8.45 m (27 ft. 9 in.)
G Height to Hinge Pin, Fully Raised	3.89 m (12 ft. 9 in.)	3.89 m (12 ft. 9 in.)	3.89 m (12 ft. 9 in.)	4.17 m (13 ft. 8 in.)	4.17 m (13 ft. 8 in.)	4.17 m (13 ft. 8 in.)	4.49 m (14 ft. 9 in.)	4.49 m (14 ft. 9 in.)
H Dump Clearance, 45 deg., Full Height	2.76 m (9 ft. 1 in.)	2.70 m (8 ft. 10 in.)	2.58 m (8 ft. 6 in.)	3.04 m (10 ft. 0 in.)	3.04 m (10 ft. 0 in.)	2.96 m (9 ft. 9 in.)	3.43 m (11 ft. 3 in.)	3.28 m (10 ft. 9 in.)
I Reach, 45-deg. Dump, Full Height	1.06 m (3 ft. 6 in.)	1.12 m (3 ft. 8 in.)	1.25 m (4 ft. 1 in.)	1.19 m (3 ft. 11 in.)	1.19 m (3 ft. 11 in.)	1.29 m (4 ft. 3 in.)	1.17 m (3 ft. 10 in.)	1.33 m (4 ft. 5 in.)
J Reach, 45-deg. Dump, 2.13-m (7 ft. 0 in.) Clearance	1.54 m (5 ft. 1 in.)	1.56 m (5 ft. 1 in.)	1.62 m (5 ft. 4 in.)	1.87 m (6 ft. 2 in.)	1.87 m (6 ft. 2 in.)	1.92 m (6 ft. 4 in.)	2.13 m (7 ft. 0 in.)	2.23 m (7 ft. 4 in.)
K Maximum Digging Depth	0.1 m (4 in.)	0.11 m (4 in.)	0.11 m (5 in.)	0.2 m (8 in.)	0.2 m (8 in.)	0.2 m (8 in.)	0.2 m (8 in.)	0.21 m (8 in.)
L Maximum Rollback at Ground Level	44 deg.	44 deg.	44 deg.	48 deg.	48 deg.	48 deg.	49 deg.	49 deg.
M Maximum Rollback, Boom Fully Raised	60 deg.	60 deg.	60 deg.	60 deg.	60 deg.	60 deg.	61 deg.	61 deg.
N Maximum Bucket Dump Angle, Fully Raised	48 deg.	48 deg.	48 deg.	46 deg.	46 deg.	46 deg.	45 deg.	45 deg.
Loader Clearance Circle, Bucket Carry Position	11.60 m (38 ft. 1 in.)	11.60 m (38 ft. 0 in.)	11.88 m (39 ft. 0 in.)	11.78 m (38 ft. 8 in.)	11.86 m (38 ft. 11 in.)	12.22 m (40 ft. 1 in.)	12.12 m (39 ft. 9 in.)	12.62 m (41 ft. 5 in.)
Specifications With Bucket With Bolt-On Edge								
Capacity, Heaped	2.3 m ³ (3.0 cu. yd.)	2.5 m ³ (3.25 cu. yd.)	3.4 m ³ (4.5 cu. yd.)	2.1 m ³ (2.75 cu. yd.)	2.3 m ³ (3.0 cu. yd.)	3.1 m ³ (4.0 cu. yd.)	1.9 m ³ (2.5 cu. yd.)	3.1 m ³ (4.0 cu. yd.)
Capacity, Struck	1.9 m ³ (2.4 cu. yd.)	2.1 m ³ (2.7 cu. yd.)	2.9 m ³ (3.8 cu. yd.)	1.9 m ³ (2.4 cu. yd.)	1.9 m ³ (2.4 cu. yd.)	2.5 m ³ (3.3 cu. yd.)	1.6 m ³ (2.1 cu. yd.)	2.5 m ³ (3.3 cu. yd.)
Bucket Weight With Bolt-On Cutting Edge	1489 kg (3,283 lb.)	1537 kg (3,388 lb.)	1747 kg (3,850 lb.)	1454 kg (3,205 lb.)	1489 kg (3,283 lb.)	1683 kg (3,711 lb.)	1385 kg (3,052 lb.)	1683 kg (3,711 lb.)
Bucket Width	2.68 m (8 ft. 10 in.)	2.68 m (8 ft. 10 in.)	2.89 m (9 ft. 6 in.)	2.55 m (8 ft. 4 in.)	2.68 m (8 ft. 10 in.)	2.89 m (9 ft. 6 in.)	2.55 m (8 ft. 4 in.)	2.89 m (9 ft. 6 in.)
Breakout Force	12 307 kg (27,131 lb.)	11 539 kg (25,439 lb.)	10 013 kg (22,074 lb.)	12 179 kg (26,849 lb.)	12 155 kg (26,797 lb.)	10 907 kg (24,045 lb.)	13 305 kg (29,333 lb.)	11 028 kg (24,313 lb.)
Tipping Load, Straight, No Tire Deflection	10 362 kg (22,844 lb.)	10 250 kg (22,597 lb.)	9912 kg (21,853 lb.)	8963 kg (19,759 lb.)	8910 kg (19,642 lb.)	8663 kg (19,099 lb.)	8085 kg (17,825 lb.)	7679 kg (16,614 lb.)
Tipping Load, Straight, With Tire Deflection	9789 kg (21,581 lb.)	9675 kg (21,330 lb.)	9321 kg (20,549 lb.)	8508 kg (18,757 lb.)	8460 kg (18,651 lb.)	8199 kg (18,076 lb.)	7713 kg (17,004 lb.)	7290 kg (15,774 lb.)
Tipping Load, 40-deg. Full Turn, No Tire Deflection	8931 kg (19,690 lb.)	8827 kg (19,459 lb.)	8499 kg (18,736 lb.)	7686 kg (16,945 lb.)	7635 kg (16,833 lb.)	7390 kg (16,293 lb.)	6899 kg (15,209 lb.)	6501 kg (14,040 lb.)
Tipping Load, 40-deg. Full Turn, With Tire Deflection	8181 kg (18,036 lb.)	8073 kg (17,798 lb.)	7731 kg (17,044 lb.)	7083 kg (15,615 lb.)	7035 kg (15,510 lb.)	6771 kg (14,927 lb.)	6393 kg (14,094 lb.)	5988 kg (13,284 lb.)
Rated Operating Load, 50% Full-Turn Tipping Load, No Tire Deflection (conforms to ISO 14397-1)*	4466 kg (9,845 lb.)	4413 kg (9,730 lb.)	4249 kg (9,368 lb.)	3843 kg (8,473 lb.)	3818 kg (8,417 lb.)	3695 kg (8,146 lb.)	3449 kg (7,604 lb.)	3251 kg (7,020 lb.)
Rated Operating Load, 50% Full-Turn Tipping Load, With Tire Deflection (conforms to ISO 14397-1)*	4091 kg (9,018 lb.)	4037 kg (8,899 lb.)	3866 kg (8,522 lb.)	3542 kg (7,808 lb.)	3518 kg (7,755 lb.)	3386 kg (7,464 lb.)	3197 kg (7,047 lb.)	2994 kg (6,642 lb.)
Operating Weight	14 258 kg (31,433 lb.)	14 305 kg (31,538 lb.)	14 515 kg (32,000 lb.)	14 411 kg (31,771 lb.)	14 446 kg (31,849 lb.)	14 641 kg (32,277 lb.)	14 528 kg (32,029 lb.)	14 827 kg (32,827 lb.)

Loader operating information is based on machine with identified linkage and standard equipment, PowerTech PVS 6068 (EPA Final Tier 4/EU Stage V) engine, ROPS cab, rear cast bumper/counterweight, transmission side-frame guards, bottom guards, standard tires, full fuel tank, and 79-kg (175 lb.) operator. This information is affected by changes in tires, ballast, and different attachments. / *Rated operating capacity based on Deere attachments only.

Dimensions and Specifications With Hi-Vis Coupler and Hook-On Construction Forks

544 P-TIER Z-BAR / HIGH-LIFT / HIGH-LIFT PLUS



Dimensions With Forks (illustration above right)	Z-Bar 1.52-m (60 in.) tine length	Z-Bar 1.83-m (72 in.) tine length	High-Lift 1.52-m (60 in.) tine length	High-Lift 1.83-m (72 in.) tine length	High-Lift Plus 1.52-m (60 in.) tine length	High-Lift Plus 1.83-m (72 in.) tine length
A Height to Top of Cab	3.33 m (10 ft. 11 in.)	3.33 m (10 ft. 11 in.)	3.33 m (10 ft. 11 in.)	3.33 m (10 ft. 11 in.)	3.33 m (10 ft. 11 in.)	3.33 m (10 ft. 11 in.)
B Hood Height	2.375 m (7 ft. 9 in.)	2.375 m (7 ft. 9 in.)	2.375 m (7 ft. 9 in.)	2.375 m (7 ft. 9 in.)	2.375 m (7 ft. 9 in.)	2.375 m (7 ft. 9 in.)
C Ground Clearance	0.40 m (15.7 in.)	0.40 m (15.7 in.)	0.40 m (15.7 in.)	0.40 m (15.7 in.)	0.40 m (15.7 in.)	0.40 m (15.7 in.)
D Length From Centerline to Front Axle	1.45 m (4 ft. 9 in.)	1.45 m (4 ft. 9 in.)	1.45 m (4 ft. 9 in.)	1.45 m (4 ft. 9 in.)	1.45 m (4 ft. 9 in.)	1.45 m (4 ft. 9 in.)
E Wheelbase	2.93 m (9 ft. 7 in.)	2.93 m (9 ft. 7 in.)	2.93 m (9 ft. 7 in.)	2.93 m (9 ft. 7 in.)	2.93 m (9 ft. 7 in.)	2.93 m (9 ft. 7 in.)
F Overall Length, Forks on Ground	8.29 m (27 ft. 2 in.)	8.59 m (28 ft. 2 in.)	8.68 m (28 ft. 6 in.)	8.98 m (29 ft. 6 in.)	9.04 m (29 ft. 8 in.)	9.35 m (30 ft. 8 in.)
G Height to Hinge Pin, Fully Raised	3.89 m (12 ft. 9 in.)	3.89 m (12 ft. 9 in.)	4.17 m (13 ft. 8 in.)	4.17 m (13 ft. 8 in.)	4.49 m (14 ft. 9 in.)	4.49 m (14 ft. 9 in.)
H Reach, Fully Raised	0.80 m (31 in.)	0.80 m (31 in.)	0.92 m (3 ft. 0 in.)	0.92 m (3 ft. 0 in.)	0.97 m (3 ft. 2 in.)	0.97 m (3 ft. 2 in.)
I Fork Height, Fully Raised	3.56 m (11 ft. 8 in.)	3.56 m (11 ft. 8 in.)	3.84 m (12 ft. 7 in.)	3.84 m (12 ft. 7 in.)	4.16 m (13 ft. 8 in.)	4.16 m (13 ft. 8 in.)
J Maximum Reach, Fork Level	1.59 m (5 ft. 3 in.)	1.59 m (5 ft. 3 in.)	1.89 m (6 ft. 2 in.)	1.89 m (6 ft. 2 in.)	2.16 m (7 ft. 1 in.)	2.16 m (7 ft. 1 in.)
K Fork Height, Maximum Reach	1.66 m (5 ft. 5 in.)	1.66 m (5 ft. 5 in.)	1.66 m (5 ft. 5 in.)	1.66 m (5 ft. 5 in.)	1.66 m (5 ft. 5 in.)	1.66 m (5 ft. 5 in.)
L Reach, Ground Level	1.03 m (3 ft. 5 in.)	1.03 m (3 ft. 5 in.)	1.40 m (4 ft. 7 in.)	1.40 m (4 ft. 7 in.)	1.72 m (5 ft. 8 in.)	1.72 m (5 ft. 8 in.)
M Depth Below Ground	91 mm (4 in.)	91 mm (4 in.)	190 mm (7 in.)	190 mm (7 in.)	195 mm (8 in.)	195 mm (8 in.)
N Tine Length	1.52 m (60 in.)	1.83 m (72 in.)	1.52 m (60 in.)	1.83 m (72 in.)	1.52 m (60 in.)	1.83 m (72 in.)
O Load Position, 50% Tine Length	0.76 m (30 in.)	0.91 m (3 ft. 0 in.)	0.76 m (30 in.)	0.91 m (3 ft. 0 in.)	0.76 m (30 in.)	0.91 m (3 ft. 0 in.)
Specifications With Forks						
Tipping Load, Straight, No Tire Deflection	7263 kg (16,013 lb.)	6852 kg (15,107 lb.)	6480 kg (14,287 lb.)	6132 kg (13,520 lb.)	5909 kg (13,027 lb.)	5604 kg (12,355 lb.)
Tipping Load, Straight, With Tire Deflection	7068 kg (15,582 lb.)	6669 kg (14,703 lb.)	6309 kg (13,909 lb.)	5973 kg (13,168 lb.)	5751 kg (12,679 lb.)	5451 kg (12,017 lb.)
Tipping Load, 40-deg. Full Turn, No Tire Deflection	6261 kg (13,804 lb.)	5897 kg (13,001 lb.)	5556 kg (12,249 lb.)	5248 kg (11,569 lb.)	5033 kg (11,096 lb.)	4763 kg (10,501 lb.)
Tipping Load, 40-deg. Full Turn, With Tire Deflection	5991 kg (13,208 lb.)	5649 kg (12,454 lb.)	5319 kg (11,726 lb.)	5031 kg (11,091 lb.)	4830 kg (10,648 lb.)	4566 kg (10,066 lb.)
Rated Operating Load, 50% Full-Turn Tipping Load, With Tire Deflection (conforms to ISO 14397-1 and SAE J1197)*	2996 kg (6,604 lb.)	2825 kg (6,227 lb.)	2660 kg (5,863 lb.)	2516 kg (5,546 lb.)	2415 kg (5,324 lb.)	2283 kg (5,033 lb.)
Rated Operating Load, Rough Terrain, 60% Full-Turn Tipping Load, With Tire Deflection (conforms to EN474-3)*	3595 kg (7,925 lb.)	3389 kg (7,472 lb.)	3191 kg (7,036 lb.)	3019 kg (6,655 lb.)	2898 kg (6,389 lb.)	2740 kg (6,040 lb.)
Rated Operating Load, Firm and Level Ground, 80% Full-Turn Tipping Load, With Tire Deflection (conforms to EN474-3)*	4793 kg (10,566 lb.)	4519 kg (9,963 lb.)	4255 kg (9,381 lb.)	4025 kg (8,873 lb.)	3864 kg (8,519 lb.)	3653 kg (8,053 lb.)
Operating Weight	14 108 kg (31,103 lb.)	14 168 kg (31,236 lb.)	14 297 kg (31,520 lb.)	14 357 kg (31,652 lb.)	14 483 kg (31,930 lb.)	14 544 kg (32,063 lb.)

Loader operating information is based on machine with identified linkage and standard equipment, PowerTech PVS 6068 (EPA Final Tier 4/EU Stage V) engine, ROPS cab, rear cast bumper/counterweight, transmission side-frame guards, bottom guards, standard tires, full fuel tank, and 79-kg (175 lb.) operator. This information is affected by changes in tires, ballast, and different attachments. / *Rated operating capacity based on Deere attachments only.

Adjustments to Operating Weights and Tipping Loads With Buckets

Adjustments to operating weights, tipping loads, and tires are based on Z-Bar machine with pin-on 2.3-m³ (3.0 cu. yd.) general-purpose bucket with bolt-on cutting edge, ROPS cab, rear cast bumper/counterweight, transmission side-frame guards, bottom guards, standard tires, full fuel tank, and 79-kg (175 lb.) operator*

Add (+) or deduct (-) kg (lb.) as indicated for loaders with 3-piece rims	Operating Weight	Tipping Load, Straight	Tipping Load, 40-deg. Full Turn	Tread Width	Width Over Tires	Vertical Height
Michelin 20.5 R 25, 1 Star L-3 XHA2	0 kg (0 lb.)	0 kg (0 lb.)	0 kg (0 lb.)	0 mm (0 in.)	0 mm (0 in.)	0 mm (0 in.)
Bridgestone 20.5 R 25, 1 Star L-3 VJT	+4 kg (+9 lb.)	+3 kg (+6 lb.)	+2 kg (+5 lb.)	0 mm (0 in.)	+2 mm (+0.1 in.)	-41 mm (-1.6 in.)
Titan 20.5 R 25, 1 Star L-3 STL3	+11 kg (+23 lb.)	+7 kg (+16 lb.)	+7 kg (+16 lb.)	0 mm (0 in.)	-7 mm (-0.3 in.)	-5 mm (-0.2 in.)
Michelin 20.5 R 25, 1 Star L-2 XTLA	-152 kg (-335 lb.)	-107 kg (-235 lb.)	-94 kg (-207 lb.)	0 mm (0 in.)	+4 mm (+0.2 in.)	-11 mm (-0.4 in.)
Bridgestone 20.5 R 25, 1 Star L-2 VUT	-65 kg (-144 lb.)	-46 kg (-101 lb.)	-40 kg (-89 lb.)	0 mm (0 in.)	+3 mm (+0.1 in.)	-10 mm (-0.4 in.)
Titan 20.5 R 25, 1 Star L-2 TGD2	-85 kg (-188 lb.)	-60 kg (-132 lb.)	-53 kg (-116 lb.)	0 mm (0 in.)	-7 mm (-0.3 in.)	-10 mm (-0.4 in.)
Titan 20.5-25, 16 PR L-2	-245 kg (-541 lb.)	-172 kg (-379 lb.)	-152 kg (-335 lb.)	0 mm (0 in.)	+6 mm (+0.2 in.)	-2 mm (-0.1 in.)
Firestone 20.5-25, 16 PR L-2 SGG LD	-280 kg (-617 lb.)	-196 kg (-433 lb.)	-173 kg (-382 lb.)	0 mm (0 in.)	+5 mm (+0.2 in.)	-1 mm (0 in.)
Titan 20.5-25, 12 PR L-2	-266 kg (-587 lb.)	-187 kg (-412 lb.)	-165 kg (-363 lb.)	0 mm (0 in.)	+8 mm (+0.3 in.)	-2 mm (-0.1 in.)
Firestone 20.5-25, 16 PR L-3 SRG LD	-276 kg (-608 lb.)	-194 kg (-427 lb.)	-171 kg (-376 lb.)	0 mm (0 in.)	+8 mm (+0.3 in.)	+3 mm (+0.1 in.)
Michelin 20.5 R 25, 1 Star L2 SNO-PLUS	-96 kg (-212 lb.)	-67 kg (-148 lb.)	-59 kg (-131 lb.)	0 mm (0 in.)	+8 mm (+0.3 in.)	-16 mm (-0.6 in.)
Michelin 620/75R26 MegaXbib ^{ES}	-189 kg (-417 lb.)	-133 kg (-293 lb.)	-117 kg (-258 lb.)	+187 mm (+7.4 in.)	+247 mm (+9.7 in.)	+23 mm (+0.9 in.)
Michelin 750/65R26 MegaXbib ^{ES}	+55 kg (+121 lb.)	+38 kg (+85 lb.)	+34 kg (+75 lb.)	+322 mm (+12.7 in.)	+521 mm (+20.5 in.)	+36 mm (+1.4 in.)
CaCl ₂ in 20.5-25, L-3 Rear Tires, 75% Fill	+825 kg (+1,820 lb.)	+1157 kg (+2,551 lb.)	+1020 kg (+2,250 lb.)	N/A	N/A	N/A

*May change based on vehicle configuration, weight, or tire-pressure adjustments.

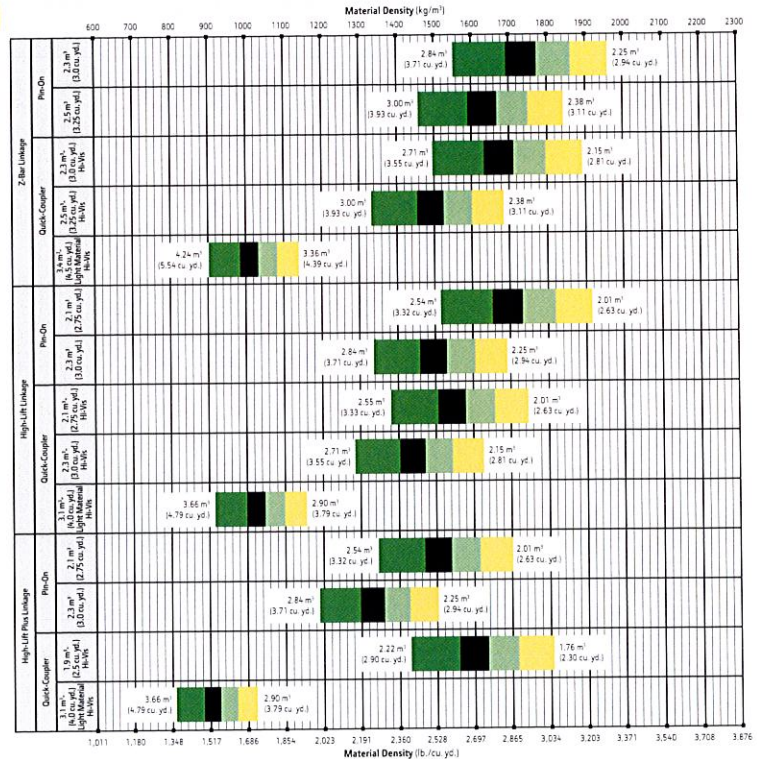
^{ES}Equipped with 1-piece rims.

³Requires 8-deg. rear axle stops.

While general information, pictures, and descriptions are provided, some illustrations and text may include product options and accessories NOT AVAILABLE in all regions, and in some countries products and accessories may require modifications or additions to ensure compliance with the local regulations of those countries.

Bucket Selection Guides 544 P-TIER Z-BAR / HIGH-LIFT / HIGH-LIFT PLUS

LOOSE MATERIALS	kg/m ³	lb./cu. yd.	LOOSE MATERIALS	kg/m ³	lb./cu. yd.
Chips, pulpwood	288	485	Limestone, coarse, sized	1570	2,646
Cinders (coal, ashes, clinkers)	673	1,134	Limestone, mixed sizes	1682	2,835
Clay and gravel, dry	1602	2,700	Limestone, pulverized or crushed	1362	2,295
Clay, compact, solid	1746	2,943	Sand, damp	2083	3,510
Clay, dry in lump loose	1009	1,701	Sand, dry	1762	2,970
Clay, excavated in water	1282	2,160	Sand, voids, full of water	2083	3,510
Coal, anthracite, broken, loose	855	1,458	Sandstone, quarried	1314	2,214
Coal, bituminous, moderately wet	801	1,350	Shale, broken crushed	1362	2,295
Earth, common loam, dry	1218	2,052	Slag, furnace granulated	1955	3,294
Earth, mud packed	1843	3,105	Stone or gravel, 37.5 to 87.5 mm		
Granite, broken	1538	2,592	(1.5 to 3.5 in.) size	1442	2,430
Gypsum	2275	3,834	Stone or gravel, 18.75 mm (0.75 in.) size	1602	2,700



Additional equipment

Key: ● Standard ▲ Optional or special
See your John Deere dealer for further information.

544 P Engine

- Wet-sleeve cylinder liners
- Programmable auto-idle and auto shutdown
- Selected idle adjustment from 900–1,250 rpm
- Starter excessive-cranking protection
- Automatic engine cool-down timer
- Automatic derating for exceeded system temperatures
- Serpentine drive belt for automatic tensioner
- Electrical fuel-priming pump
- Dual-stage fuel filter and water separator
- 500-hour vertical spin-on oil filter
- ▲ Engine-compartment light
- ▲ Chrome exhaust stack
- Automatic glow plugs for cold start
- ▲ Engine-block heater (recommended for cold starts below –23 deg. C [–10 deg. F])
- ▲ Centrifugal engine air pre-cleaner
- ▲ Throttle lock

Powertrain

- Clutch cutoff with 4 operator settings: Automatic, level ground, small slope, or steep slope
- Programmable maximum high gear
- Clutch calibration engaged from monitor
- 2,000-hour vertical spin-on transmission filter
- Transmission fill tube and sight gauge
- Transmission diagnostic ports
- ▲ 5-speed transmission with non-lockup torque converter

544 P Powertrain (continued)

- 5-speed transmission with lockup torque converter
- Front locking differential
- ▲ Rear locking differential
- Brake retractors and adjusters
- ▲ Automatic differential lock
- Axle oil temperature sensing
- ▲ Wheel-spin control

Quad-Cool™ Cooling System

- Heavy-duty, trash-resistant radiator and high-ambient cooling package
- 2-side access to all coolers
- Isolated from engine compartment
- Engine radiator
- Engine oil cooler
- Hydraulic oil cooler (oil to air)
- Transmission oil cooler (oil to air)
- Charge air cooler (air to air)
- Fuel cooler
- Coolant recovery tank
- Antifreeze, –37 deg. C (–34 deg. F)
- Cool-on-demand, hydraulically driven, swing-out fan
- Enclosed fan safety guard
- ▲ Automatic reversing fan drive
- ▲ Axle and service-brake coolers

544 P Hydraulics

- Electrohydraulic (EH) controls with soft stops and adjustable settings
- In-cab adjustable automatic return-to-dig bucket positioner
- In-cab adjustable automatic boom-height kickout/return to carry
- Reservoir with sight gauge and fill strainer
- Hydraulic diagnostic ports
- 4,000-hour in-tank filter
- 2 function — joystick with F-N-R
- ▲ 2 function — 2-lever fingertip controls and steering column F-N-R
- ▲ 3 function — joystick with F-N-R and integrated 3rd-function roller
- ▲ 3 function — 3-lever fingertip controls and steering column F-N-R
- ▲ 4 function — joystick with F-N-R and integrated 3rd/4th-function rollers
- Programmable multifunction buttons (2)
- Adjustable and continuous hydraulic-flow settings
- Programmable attachment settings
- ▲ Ride control, automatic with monitor-adjustable speed settings
- ▲ Hydraulic control system for quick-coupler locking pins
- ▲ Hydra™ XR cold-temperature hydraulic fluid recommended below –25 deg. C (–13 deg. F)

Additional equipment (cont.)

Key: ● Standard ▲ Optional or special
See your John Deere dealer for further information.

544 P Steering Systems

- Conventional steering wheel with spinner knob
- ▲ Secondary steering

Electrical

- Solid-state electrical power-distribution system
- Lockable master electrical-disconnect switch
- Battery-terminal safety covers
- By-pass start safety cover at starter
- Remote jump-start access in battery box
- Pre-wired for beacon/strobe light
- Lights: Halogen driving lights with guards (2) / Front (4), rear cab (2), and rear grille (2) work lights / LED front turn signals and flashers / LED stop- and taillights
- ▲ Premium LED light package (all exterior lights are heavy-duty LED)
- Programmable courtesy lights
- Horn, electric
- Reverse warning alarm
- Multifunction/multi-language 178-mm (7 in.) LCD color monitor includes: Digital instruments — Analog display (hydraulic oil temperature, engine coolant temperature, transmission oil temperature, and engine oil pressure) / Digital display (engine rpm, transmission gear/direction indicator, hour meter, fuel level, diesel exhaust fluid (DEF) level, speedometer, odometer, and average fuel consumption)
- ▲ Multifunction/multi-language 127-mm (5 in.) LCD color monitor includes: Digital instruments — Analog display (hydraulic oil temperature, engine coolant temperature, transmission oil temperature, and engine oil pressure) / Digital display (engine rpm, transmission gear/direction indicator, hour meter, fuel level, DEF level, speedometer, odometer, and average fuel consumption)
- ▲ Integrated cycle counter with 5 categories
- Indicator lights: Standard and selected options / Amber caution and red stop
- Operator-warning messages
- Built-in diagnostics: Diagnostic-code details / Sensor values / Calibrations / Individual circuit tester
- ▲ Electrical corrosion-prevention package
- Standard AM/FM/Weather-Band (WB) radio with remote auxiliary port
- ▲ Premium AM/FM/WB radio with Bluetooth®, remote auxiliary port, and remote USB port (premium cab only)
- 24- to 12-volt, 8-amp converter and cab power ports (3)
- ▲ 24- to 12-volt, 15- or 30-amp converter and cab power ports (3)

544 P Operator's Station

- Standard cab with air conditioning/heater (ROPS/FOPS Level 1, isolation mounted)
- ▲ Premium cab with air conditioning/heater (ROPS/FOPS Level 1, isolation mounted)
- ▲ Automatic temperature control (premium cab only)
- Rear window defrost vent
- Keyless start with multiple security modes
- Sealed-switch module with function indicators
- Seat with backrest extension, deep foam, fabric cover, and adjustable air suspension
- ▲ Premium seat with high-wide back- and headrest extension, heated and ventilated, leather/fabric cover, and adjustable heavy-duty air suspension
- Hydraulic controls integrated to seat
- High-visibility, bright-orange seat belt, 76 mm (3 in.), with retractor
- ▲ Seat-belt minder monitoring with JDLink™ and seat-belt indicator beacon
- Cup holder and cup/Thermos® holder with retaining strap
- Lunch-box/cooler holder with tie-down brackets
- Coat hook
- LED dome and reading light
- Rubber floor mat
- Dual-tilt steering column
- Operator's manual storage compartment
- Outside (2) and inside (1) rearview mirrors
- ▲ Heated outside mirrors with convex lens
- ▲ In-cab adjustable heated outside mirrors with convex lens (premium cab only)
- Left-side operator-station access
- Fall-arrest system anchor points tested to 2268 kg (5,000 lb.) on front of cab
- Slip-resistant steps and ergonomic handholds
- Pull-down front sun visor
- Front and rear intermittent windshield wipers and washers
- ▲ Powered cab air pre-cleaner
- ▲ Beacon bracket only
- ▲ Beacon bracket with strobe beacon
- Rearview camera
- ▲ Rearview camera with radar object-detection system
- ▲ Dedicated 178-mm (7 in.) rear camera display
- Payload scale ready
- ▲ Fire extinguisher

544 P Loader Linkage

- Z-Bar loader linkage (parallel lift)
- ▲ High-Lift Z-Bar loader linkage (parallel lift)
- ▲ High-Lift Plus Z-Bar loader linkage (parallel lift)

Buckets and Attachments

- ▲ Full line of Deere pin-on buckets, coupler buckets, and forks
- ▲ John Deere hydraulic coupler that accepts JRB-pattern attachments
- ▲ Hi-Vis hydraulic coupler that accepts Euro-pattern attachments (ISO)

Overall Vehicle

- JDLink wireless communication system (available in specific countries; see your dealer for details)
- NeverGrease™ rear-axle oscillation
- Front and rear tie-downs
- Rear cast bumper/counterweight with rear hitch and locking pin
- Articulation locking bar
- Loader boom service locking bar
- 40-deg. steering articulation to each side with rubber-cushion stops on frame
- Vandal protection with lockable engine enclosures, right counterweight storage, and filler access for radiator/fuel/DEF/hydraulic transmission
- Left-side service steps and handholds
- ▲ Right-side service steps and handrails
- ▲ Left-side close-mounted steps
- Storage compartment
- Fuel-tank fill strainer
- Heavy-duty fuel-tank guard
- Ground-level fuel and DEF fill
- Same-side ground-level daily servicing
- 20.5R25 tires on 3-piece rims
- ▲ Ag material-handling package
- ▲ Environmental drains and sample ports for engine, transmission, hydraulic oils, and engine coolant
- Fenders, front narrow
- ▲ Fenders, front full width
- ▲ Fenders, front and rear full width
- ▲ Fenders, front and rear full width with mud flaps
- ▲ Less wheels and tires with axle stops
- ▲ Rims less tires
- ▲ Transmission side-frame and bottom guards
- ▲ Lift eyes
- ▲ License-plate bracket and light

While general information, pictures, and descriptions are provided, some illustrations and text may include product options and accessories NOT AVAILABLE in all regions, and in some countries products and accessories may require modifications or additions to ensure compliance with the local regulations of those countries.

Net engine power is with standard equipment including air cleaner, exhaust system, alternator, and cooling fan at test conditions per ISO 9249. No derating is required up to 3050-m (10,000 ft.) altitude. Specifications and design subject to change without notice. Specifications with the exception of bucket capacity are in accordance with all applicable ISO standards. Except where otherwise noted, these specifications are based on a unit with applicable linkage and standard equipment, ROPS cab, rear cast bumper/counterweight, transmission side-frame guards, bottom guards, standard tires, full fuel tank, and 79-kg (175 lb.) operator.



JOHN DEERE



6801 McFarland Blvd West
Northport, AL 35476
205-339-0300

3540 Wetumpka Highway
PO Box 210278, Montgomery, AL 36
334-277-7260

2149 Highway 31 South
Pelham, AL 35124

4308 Water Trail
Graysville, AL 35073
205-988-4472

66 Industrial Park Drive
Monroeville, AL 36460
251-575-7111

25135 One Aviation Way SW
Madison, AL 35756
256-233-1914

2255 Highway 21 South
Oxford, AL 36203
256-831-0921



STANDARD WARRANTY FOR NEW JOHN DEERE CONSTRUCTION, COMPACT CONSTRUCTION (CCE), FORESTRY AND UTILITY PRODUCTS US & CANADA

- **Construction & Forestry Products:** 12 months/unlimited hours (whichever occurs first) Full Machine Standard Warranty
- **Compact Construction Equipment (CCE) Products:** 24 months or 2000 hours (whichever occurs first) Full Machine Standard Warranty
- **C&E Series Pull-Type Scrapers:** 6 months Full Machine Standard Warranty
- **DC & DE Pull-Type Scrapers:** (Model year 2024 and newer) 12 months Full Machine Standard Warranty; 36 months or 10,000 hours (whichever comes first) StructurALL Warranty
- **Scraper Tractors:** 24 Months or 2000 Hours (whichever occurs first) Full Machine Standard Warranty
- **Forestry Attachments:** 12 Months or 2000 Hours (whichever occurs first) Full Machine Standard Warranty

The "Standard Warranty" is part of the warranty protection package available from John Deere Construction & Forestry Company (John Deere Limited in Canada) ("John Deere") to purchasers of new John Deere products ("product"):

STANDARD Warranty is John Deere's standard new product warranty, described in this document, provided at no additional charge to the purchaser.

EXTENDED Warranty is a separate repair contract made available by John Deere for purchasers who wish to complement their Standard Warranty coverage. Complete Extended Warranty details, including coverage options and limitations, are set forth in the Application for Extended Warranty, which is available from authorized John Deere dealers.

STRUCTURALL Warranty applies to certain structural components as listed below and as described in this document.

FACTORY-INSTALLED UNDERCARRIAGE Warranty applies to certain undercarriage components as listed below and as described in this document.

A. STANDARD WARRANTY - GENERAL PROVISIONS

John Deere will repair or replace, at its option, any parts (except those specified below) of a new John Deere product that, as delivered to the original retail purchaser(s), are defective in material or workmanship. Performance of this warranty will be free of charge for parts and labor, except as otherwise stated below. Standard Warranty applies only to purchases from John Deere and authorized John Deere dealers and, except as otherwise provided in the next sentence and section L below, is extended only to the original retail purchaser of the product. Remaining Standard Warranty applicable to a used John Deere product is transferred to a subsequent purchaser of the product only if the subsequent purchaser requests a transfer from an authorized John Deere dealer before the product's Standard Warranty expires. Coverage begins on the date of delivery of the product to the original retail purchaser. For purposes of this warranty, a product that has been rented, used for demonstration purposes for 150 or more hours, or otherwise used prior to its original retail purchase has been "used" for the total duration of such use. Warranty statements required by law covering engine emissions-related parts and components are found on a separate written warranty certificate provided to the purchaser at the time of the original retail purchase.

B. WHAT IS COVERED BY STANDARD WARRANTY

All parts of a new John Deere product (except those noted in Sections D and E below) are covered during the Standard Warranty period set out above.

C. EXCLUSIVE REMEDY

The repair or replacement of covered parts or components that are defective, as provided in Sections A, B, D.2 and D.3 herein, shall be the purchaser's exclusive remedy for any defect in the product. However, if after repeated attempts such repair or replacement fails to correct the performance problem caused by the defect, the purchaser's sole remedy shall be a refund of the amount paid for the product (in exchange for a return of the product), excluding any transportation charges, license fees, taxes and insurance premiums, and less a reasonable allowance for use of

the product prior to its return. In no event will the dealer, John Deere or any company affiliated with John Deere be liable for any incidental or consequential damages, including but not limited to loss of profits, rental of substitute equipment or other commercial loss. Correction of defects in the manner provided above shall constitute fulfillment of all liabilities of the Dealer, John Deere, or any company affiliated with John Deere to the purchaser or any other person, whether based upon contract, tort, strict liability, or otherwise. This limitation does not apply to claims for personal injury.

A. ITEMS COVERED SEPARATELY -

1. Standard Warranty does not apply to batteries, radios, tires, cameras, or to Cummins, MTU or Detroit Diesel Engines installed in John Deere products, which are covered by separate written warranties.
2. Factory-Installed Undercarriage Warranty covers all non-rubberized factory-installed undercarriage wear components for 3 years or 4,000 hours from the date of delivery to the original retail purchaser, whichever occurs first (unless terminated earlier under Section F, below). For purposes of this warranty, a product that has been rented, used for demonstration purposes for 150 or more hours, or otherwise used prior to its original retail purchase has been "used" for the total duration of such use. In addition to the items listed in section E below, Factory-Installed Undercarriage Warranty does not cover: failures due to wear, machine application, maintenance practices, or improper machine configuration; removal and installation labor; transportation or hauling costs; unapproved parts; non-wear items; and rubberized undercarriage components such as rubber tracks. Warranty claims will be pro-rated based upon wear of the failed component and whether track shoe width is approved by John Deere. Factory-Installed Undercarriage Warranty does not apply to Scraper Tractors.
3. StructurALL Warranty for new John Deere Products (except Compact Excavators & Loaders, Skid-Steer Loaders, Compact Track Loaders, Scraper Tractors, Pull-Type Scrapers, and Forestry Attachments, which are not eligible for StructurALL Warranty) begins at the date of delivery to the original retail purchaser and ends (unless terminated earlier under Section F, below) after three (3) years, or 10,000 hours (whichever occurs first). For purposes of this warranty, a product that has been rented, used for demonstration purposes for 150 or more hours, or otherwise used prior to its original retail purchase has been "used" for the total duration of such use. **StructurALL Warranty applies only to the following structural components listed below as installed on the product at the time of original manufacture. If a particular component is not listed below it is not covered by StructurALL Warranty.**

Arm; Articulation Joint (incl. pins & bushings); Bin Frame; Boom; Carbody; C-Frame*; Circle Frame; Coupler (John Deere built ONLY); Dipperstick; Draft Frame; Engine Frame; Equipment Frame; Grapple Arch and Grapple Boom; Loader Arm; Loader Frame; Mainframe; Moldboard Lift Arm; NeverGrease™ Pin Joints [Includes steering pin and bushing joints (standard equipment), roller elements (roller bearings) in bucket to boom joints and sliding elements (bushing) for boom and linkage joints (optional equipment)]; Rollover Protection Structure (ROPS); Side Frame; Swing Frame; Track Frame; Undercarriage Frame; X-Frame; Z-bar loader linkage (including bell crank and bucket driver link); Specialty booms and arms marketed as "heavy duty" by John Deere.

Items Covered by StructurALL for Cut-to-Length Forestry Machines: Front frame (welded assembly); Rear frame (welded assembly); Crane king post with basement; Middle joint frame; Cabin swing frame; Main Boom

StructurALL Warranty does not apply to:

1. Any product used primarily in extreme duty or severe duty applications such as but not limited to: demolition and wrecking, chemical plant (including fertilizer plants), salt mines, steel mill, land fill and transfer stations, scrap handling, scarifying and other applications that are similarly destructive or similarly heavy duty except specialty booms and arms as stated in Section D.3 above.
2. C-Frames on Crawlers equipped with root rakes or used in forestry applications unless equipped with an "extreme duty" reinforcement package.
3. Cut-to-Length Forestry Heads and Slash Bundler Units.
4. Crawlers equipped with optional side booms.
5. Cut-to-Length Forestry, Excavator, and Log Loader swing bearings.
6. Motor Graders equipped with front- or rear-mounted snow wings.

A. ITEMS NOT COVERED -

John Deere is NOT responsible for the following:

1. Freight.
2. Adjustments to compensate for wear, for periodic maintenance or adjustments that result from normal wear and tear.
3. Damage caused by unapproved adjustments (electronic or mechanical) to machine or machine components outside of published specifications including but not limited to engine, hydraulic components and relief valves.
4. Program updates, calibrations, and pressure adjustments.
5. Additional Labor Time - Above Dealer Labor Rate.
6. Additional Cleaning - Above Dealer Labor Rate.
7. Rental Fees.
8. Depreciation or damage caused by normal wear or application, lack of reasonable and proper maintenance, failure to follow operating instructions, misuse, lack of proper protection during storage, vandalism, negligence, collision, expenses to seek reinstatement of warranty following theft or loss of Product, or other accidents.
9. Premiums charged for Overtime Labor.
10. Transportation to and from the dealership.
11. Travel time, mileage, or service calls by the dealer.
12. Non-John Deere components or modifications, Rotobec grapples, and attachments installed aftermarket.
13. Shop supplies and maintenance items such as, but not limited to: filters, fuels, oil, hydraulic fluid, lubricants, coolants, conditioners, shop towels, cleaners and degreasers.
14. Torn, cut, or worn hoses.
15. Wear items, such as, but not limited to: body liner, belts, blades, bulbs, lubricated joints (including pins and bushings), dry brakes, brake linings, dry clutch linings, saw blades, chains, skidder grapple shocks, color marking nozzles, and articulation bumpers.
16. Items such as cutting-edge parts, delimbing knives, bucket teeth and rubber track are not warranted for depreciation or damage caused by normal wear, lack of proper maintenance, misuse, failure to follow operating instructions, the elements or accident.
17. Any defect in a non-covered component, or damage to or failure of a covered component caused by a defect in a non-covered component.
18. Secondary damage which occurs from continued operation of a product after recognition of the occurrence of a failure.
19. Parts supplied by or repairs, maintenance or modifications performed by someone other than an authorized John Deere dealer, including any damage caused by such use of parts, repairs, maintenance, or modifications not performed by an authorized John Deere dealer.
20. The use of "track type" tire chains on Feller Bunchers and Skidders is an unapproved modification. Warranty will be void on these machines using "track type" tire chains.
21. Topping off fluids when fluid levels fall in the range between low and full
22. Parts/Kits not ordered on machine and installed aftermarket. These parts will be covered by any applicable parts warranty.
23. Attachments installed aftermarket – i.e., Winch not installed at factory.
24. Custom options installed outside the factory – i.e., G.R. Manufacturing option packages.
25. Used Products (except as otherwise provided in section L below).
26. Lost or stolen Products.

B. TERMINATION OF WARRANTY-

John Deere is relieved of its obligations under Standard Warranty, StructurALL Warranty, Factory-Installed Undercarriage Warranty and/or Extended Warranty if:

1. The product is modified or altered in ways not approved by John Deere; or
2. Any unapproved or improperly sized attachment is installed on the product. Approval and attachment size shall be at John Deere's sole discretion. (Consult dealer prior to installing attachments or product modification).
3. The product is moved outside the US and/or Canada.

A. PARTS REPLACED UNDER WARRANTY -

Only new or remanufactured parts or components furnished or approved by John Deere, will be used if John Deere elects to repair the product. If any such part or component is defective in material or workmanship when installed in the product, John Deere will repair or replace, as it elects, such defective part or component, provided the defect is reported to an authorized John Deere dealer within 90 days of installation or before expiration of the applicable Standard Warranty, Factory-Installed Undercarriage Warranty and/or StructurALL Warranty whichever is later.

B. TELEMATICS

NOTICE: Products may be equipped with telematics hardware and software ("Telematics") that transmit data to John Deere/ Dealer. Purchaser may deactivate Telematics at www.jdlink.com.

Notwithstanding Purchaser's right, title or interest in the Products, Purchaser agrees that John Deere and Dealer (their affiliates, successors and assigns), without further notice to Purchaser have the right to:

1. Access, use, collect and disclose any data generated by, collected by, or stored in, Products or any hardware or devices interfacing with Products ("Machine Data");
2. Access Machine Data directly through data reporting devices integrated within, or attached to, Products, including Telematics ("Data Reporting Systems"); and
3. Update the Data Reporting Systems software from time to time. Machine Data will only be used in accordance with John Deere's Machine Data Policy, located at www.JohnDeere.com/MachineDataPolicy.

C. OBTAINING WARRANTY SERVICE -

To obtain warranty service, the purchaser must request warranty service from a John Deere dealer authorized to sell the product to be serviced. When making such a request, the purchaser must present evidence of the product's delivery date, make the product available at the dealer's place of business, and inform the dealer in what way the purchaser believes the product to be defective. Standard Warranty, Factory-Installed Undercarriage Warranty and/or StructurALL Warranty repairs may be made in the field if the purchaser and servicing dealer so desire. However, John Deere will not be responsible for any charges (such as dealer travel time, mileage or extra labor) that would not have been incurred had the product been repaired at the dealer's place of business.

D. NO IMPLIED WARRANTY, CONDITIONS OR OTHER REPRESENTATION -

Where permitted by law, neither John Deere nor any company affiliated with it makes any warranties, representations, conditions or promises, express or implied, as to the quality, performance, or freedom from defect of its products, other than those set forth in this document and **NO IMPLIED WARRANTY OF MERCHANTABILITY, CONDITIONS OR FITNESS IS MADE.**

E. NO DEALER WARRANTY -

The selling dealer makes no warranty of its own on any item covered by this warranty and makes no warranty on other items unless the dealer delivers to the purchaser a separate written warranty certificate specifically warranting the item. The dealer has no authority to make any representation or promise on behalf of John Deere, or to modify the terms or limitations of this warranty in any way.

F. USED JOHN DEERE PRODUCTS ONLY -

John Deere will transfer remaining Standard Warranty, Factory-Installed Undercarriage Warranty and/or StructurALL Warranty to the purchaser of a used John Deere construction and/or forestry product that has been used for less than the full warranty period provided at the product's original retail purchase. This transfer is not effective until change of ownership is registered by a John Deere dealer. **ALL THE TERMS, INCLUDING LIMITATIONS AND EXCLUSIONS, OF THE JOHN DEERE STANDARD WARRANTY, FACTORY-INSTALLED UNDERCARRIAGE WARRANTY, AND/OR STRUCTURALL WARRANTY ORIGINALLY PROVIDED FOR THE PRODUCT REMAIN IN EFFECT AND APPLICABLE.**



Company ID Number: 513478

THE E-VERIFY PROGRAM FOR EMPLOYMENT VERIFICATION MEMORANDUM OF UNDERSTANDING

ARTICLE I

PURPOSE AND AUTHORITY

This Memorandum of Understanding (MOU) sets forth the points of agreement between the Department of Homeland Security (DHS) and Warrior Tractor & Equipment Co., Inc. (Employer) regarding the Employer's participation in the Employment Eligibility Verification Program (E-Verify). This MOU explains certain features of the E-Verify program and enumerates specific responsibilities of DHS, the Social Security Administration (SSA), and the Employer. E-Verify is a program that electronically confirms an employee's eligibility to work in the United States after completion of the Employment Eligibility Verification Form (Form I-9). For covered government contractors, E-Verify is used to verify the employment eligibility of all newly hired employees and all existing employees assigned to Federal contracts or to verify the entire workforce if the contractor so chooses.

Authority for the E-Verify program is found in Title IV, Subtitle A, of the Illegal Immigration Reform and Immigrant Responsibility Act of 1996 (IIRIRA), Pub. L. 104-208, 110 Stat. 3009, as amended (8 U.S.C. § 1324a note). Authority for use of the E-Verify program by Federal contractors and subcontractors covered by the terms of Subpart 22.18, "Employment Eligibility Verification", of the Federal Acquisition Regulation (FAR) (hereinafter referred to in this MOU as a "Federal contractor with the FAR E-Verify clause") to verify the employment eligibility of certain employees working on Federal contracts is also found in Subpart 22.18 and in Executive Order 12989, as amended.

ARTICLE II

FUNCTIONS TO BE PERFORMED

A. RESPONSIBILITIES OF SSA

1. SSA agrees to provide the Employer with available information that allows the Employer to confirm the accuracy of Social Security Numbers provided by all employees verified under this MOU and the employment authorization of U.S. citizens.
2. SSA agrees to provide to the Employer appropriate assistance with operational problems that may arise during the Employer's participation in the E-Verify program. SSA agrees to provide the Employer with names, titles, addresses, and telephone numbers of SSA representatives to be contacted during the E-Verify process.
3. SSA agrees to safeguard the information provided by the Employer through the E-Verify program procedures, and to limit access to such information, as is appropriate by law, to individuals responsible for the verification of Social Security Numbers and for evaluation of the E-Verify program or such other persons or entities who may be authorized by SSA as governed



Company ID Number: 513478

To be accepted as a participant in E-Verify, you should only sign the Employer's Section of the signature page. If you have any questions, contact E-Verify at 888-464-4218.

Employer Warrior Tractor & Equipment Co., Inc.	
Stanley McCracken	
Name (Please Type or Print)	Title
Electronically Signed	03/01/2012
Signature	Date

Department of Homeland Security – Verification Division	
USCIS Verification Division	
Name (Please Type or Print)	Title
Electronically Signed	03/01/2012
Signature	Date

Information Required for the E-Verify Program

Information relating to your Company:

Company Name:	Warrior Tractor & Equipment Co., Inc.
Company Facility Address:	6801 McFarland Blvd
	Northport, AL 35476
Company Alternate Address:	P O Box 412
	Northport, AL 35476
County or Parish:	TUSCALOOSA
Employer Identification Number:	630588737

Company ID Number: 513478

North American Industry Classification Systems Code:	423
Administrator:	Warrior Tractor and Equipment Co., Inc.
Number of Employees:	100 to 499
Number of Sites Verified for:	1
Are you verifying for more than 1 site? If yes, please provide the number of sites verified for in each State:	
<ul style="list-style-type: none">ALABAMA 1 site(s)	

Information relating to the Program Administrator(s) for your Company on policy questions or operational problems:

Name:	Stanley N McCracken		
Telephone Number:	(205) 339 - 0300	Fax Number:	(205) 333 - 0101
E-mail Address:	wte024@warriortractor.com		