

**BID SUBMITTAL FORM**  
**Alabama County Joint Bid Program**  
**Heavy Equipment – Bid Item: Compact Track Excavator - Option D-1**

Company Name: Warrior Tractor & Equipment Company, Inc.

Address: 6801 McFarland Blvd, Northport, AL 35476

Bid Submitted by: David Schafer  
(Name of company representative)

Title: Sales Manager E-mail address: dschafer@warriortractor.com

Phone: 205-339-0300 Fax: 205-333-0101

By submitting this bid, we agree:

Initials

The equipment model number identified below meets the bid specs for this bid item

DRS

That the bid price will be honored for all counties for the period from **January 1, 2026** to **June 30, 2026**.

DRS

The equipment will be delivered at the bid price to all counties participating in the joint bid program.

DRS

The company acknowledges the freight preparation and delivery price is to be included in the total bid price for the standard machine.

DRS

The company representative listed above will be the contact person for purchasing this bid item under the joint bid program.

DRS

The bid is accompanied by a current catalog or model specification document for the model number identified below.

DRS

The bid is accompanied by a copy of the manufacturer's standard warranty as required in the bid specifications.

DRS

The bid includes the E-Verify documentation required by Alabama law.

DRS

We comply with, and if awarded the contract, we will comply with, the requirements of Section 41-16-50 and Sections 41-16-160 to -166, Code of Alabama 1975.

DRS

If awarded the bid, a performance bond will be provided upon request.

DRS

The bid documents include the **Manufacturer's Suggested Retail Price Sheet (MSRP) for the Standard Machine.**

DRS

Total Bid Price for Standard Machine: \$ 118,842.00  
(Total Bid Price for Standard Machine Includes Freight Preparation, Delivery and Standard Warranty Costs) \*

Freight Preparation and Delivery: \$ 6,250.00  
(Included in Standard Machine Bid Price)

Manufacturer's Suggested Retail Price for Standard Machine: \$ 153,092.00

Equipment Model #: John Deere 75 P-Tier

Description: Excavator

Signature of company representative submitting bid: 

Title: Sales Manager

\* **NOTE:** Award will be made based on the total cost of the **Standard Machine**. The total cost of the standard machine is to include freight preparation, delivery and standard warranty cost. Freight preparation and delivery will be excluded from the total bid price of the standard machine in determining the percentage discount for any available options.

## BID SUBMITTAL FORM: OPTION COST SHEET

By submitting this bid, we agree:

To offer any available options at the percent difference between the Manufacturer's Suggested Retail Price Sheet and the actual bid price on the Standard Machine\*

DRS

The bid documents include the **Manufacturer's Suggested Retail Price Sheet (MSRP)** for the Standard Machine

DRS

Equipment Model #: John Deere 75 P-Tier

Description: Excavator

Signature of company representative submitting bid: David R. Schaf

Title: Sales Manager

**\*Note:** The percent difference between the **Manufacturer's Suggested Retail Price Sheet (MSRP)** for the standard machine as specified by these **Bid Specifications** and the actual price bid by the vendor will be calculated to determine the percentage discount to be applied to any available options. The bid price of the freight preparation and delivery cost shall be excluded in determining the percentage discount to be applied to available options. Any individual county may choose to add any available option to the standard machine at the percentage discount at the time of purchase.



# **BID SPECIFICATIONS FOR COMPACT TRACK-MOUNTED HYDRAULIC EXCAVATOR Option D-1**

## **GENERAL**

These specifications shall be construed as the minimum acceptable standards for a track mounted hydraulic excavator with long undercarriage. Should the manufacturer's current published data or specifications exceed these standards, the manufacturer's standards shall be considered minimum and shall be furnished. All integral parts not specifically mentioned in the scope of these specifications that are necessary to provide a complete working unit shall be furnished. Additionally, the machine offered for bid shall include all standard manufacturers' equipment. The excavator must be a new current production model and shall meet all EPA and other applicable standards at the time of manufacture.

Use of specific names and numbers in the specifications is not intended to restrict the bidder or any seller or manufacturer, but is intended solely for the purpose of indicating the type, size and quality of equipment considered best adapted to the uses of the counties participating in this joint bid.

## **BID SUBMITTAL FORM**

Each bidder must submit his or her bid on the bid submittal form included in the invitation to bid package. All written warranties to be submitted shall be attached to the bid submittal form.

## **BID PRICE**

The price bid shall include all destination charges, delivery charges, title fees, rebates, and all other applicable costs and refunds.

## **MANUALS**

Each unit shall be provided with one (1) copy of the operator's manual, one [1] repair manual, and one (1) copy of the current parts manual. Units will not be accepted for delivery until the manuals as outlined above are received by the purchaser.

## **REPLACEMENT PARTS AVAILABILITY**

Parts must be available for 5 years or 7,500 hours of use for the piece of equipment. If any replacement parts are not delivered within three (3) working days of an order being placed, the bidder will deliver an equivalent machine for the county to use at no cost to the county until such time as the parts are delivered to the county so it can affect repairs to its machine.

## **WARRANTY**

Bidders shall submit a copy of the manufacturer's standard warranty. Warranty shall include service response time of maximum of 36 hours within notification by county.

Yes X No     

Page#         

or

Attachment X



**WEIGHT**

Minimum 18,000 lbs.

Yes ☒ No ☐  
Page # 7

Three (3) cylinders (or more), minimum 149 cubic inch diesel engine with minimum 55 net flywheel horsepower.

Yes ☒ No ☐  
Page # 6

**UNDERCARRIAGE**

Track length shall be minimum 9'

Yes ☒ No ☐  
Page # 8

Track shoe width shall be minimum 17".

Yes ☒ No ☐  
Page # 8

Minimum five (5) track rollers per side.

Yes ☒ No ☐  
Page # 6

Minimum one (1) carrier rollers per side.

Yes ☒ No ☐  
Page # 6

Unit shall be equipped with steel tracks with rubber track pads.

Yes ☒ No ☐  
Page # ATTACH

**CAPACITIES**

Fuel Tank Capacity – 29 gallon minimum

Yes ☒ No ☐  
Page # 7

Hydraulic Tank Capacity – 14 gallon minimum

Yes ☒ No ☐  
Page # 7

**BOOM AND STICK**

One-piece boom with minimum 11' length

Yes ☒ No ☐  
Page # ATTACH

Stick shall be a minimum 5.5' long

Yes ☒ No ☐  
Page # 8

**DIMENSIONS**

Reach at ground level – 22' 0" minimum

Yes ☒ No ☐  
Page # 7

Bucket breakout force – minimum 10,000 lbs.

Yes ☒ No ☐  
Page # 7

Stick digging force – minimum 6,500 lbs.

Yes ☒ No ☐  
Page # 7

**BUCKET**

Bucket size and type will be provided as an option to be determined by ordering County

Yes ☒ No ☐

Page # ATTACH

**HYDRAULICS**

Hydraulic pump output shall be a minimum of 38 GPM

Yes ☒ No ☐

Page # 6

**Blade**

Blade width – minimum 7.5'

Yes ☒ No ☐

Page # 8

Blade height – minimum 14"

Yes ☒ No ☐

Page # 8

**CAB**

Enclosed ROPS cab:

Heater

Yes ☒ No ☐

Page # 11

Factory installed air conditioning

Yes ☒ No ☐

Page # 11

AM/FM radio

Yes ☒ No ☐

Page # 11

# 75 P EXCAVATOR BASE MACHINE



05-Nov-2025

| Code   | Description                 | QTY | List Price         |
|--------|-----------------------------|-----|--------------------|
| 8240FF | 75 P EXCAVATOR BASE MACHINE | 1   | US\$153,092.00 USD |

75 P-tier Standard EquipmentENGINE:Yanmar 4TNV98CT 3.3L - certified with EPA Final Tier 4 emissions63.7 SAE Net HP69.2 Gross HPDirect InjectionAntifreeze Protection to -34 degrees F (-37 degrees C)Single Dry-Type Air FilterElectric Fuel ShutoffLow-Noise Fan with GuardFull Flow Oil FilterHeavy-Duty Low Maintenance BatteriesFuel FilterWater SeparatorIsolation MountedRadiator/Oil Cooler Trash Screen60 Amp Alternator - 24 VoltAutomatic Belt Tension DeviceHYDRAULICS:Open Center with Two Variable Displacement PumpsHydraulic Shut-Off LeverHydraulic Pilot ControlsAxial Piston Swing MotorMultiple Wet Disk Swing BrakeBoom Reduced-Drift ValvesMechanical Pattern ChangerHand Controlled Proportional Auxiliary Hydraulics Plumbed to the End of the BoomHydraulic Temperature and Pressure SensorContinuous Flow Auxiliary HydraulicsUNDERCARRIAGE:Front Track GuidePropel Motor ShieldPlanetary Final DriveTwo-Speed PropelAxial Piston Propel MotorBackfill BladeUPPER STRUCTURE:Rear-view Mirrors (right, left, and rear)ToolboxVandal Locks for:-Cab Door-Service DoorsFuel CapHydraulic ReservoirToolboxLED Work lights:-One Mounted on Frame-One Mounted on BoomCounterweight: 2568lb (1165kg) for Standard Counterweight, 948lb (430kg) for Additional CounterweightFRONT ATTACHMENTS:Tungsten Carbide Thermal Coating Wear Protection at Arm TipDirt Seal on all Bucket PinsOne Piece BoomLess BucketOPERATOR'S STATION:Adjustable Control Positions (Levers to Seat, Seat to Pedals)Adjustable Arm Rests (Angle/Height)Pilot Control Shut-Off LeverShort Stroke, Low Effort Pilot LeversDeluxe Adjustable Cloth Seat with Suspension8 in. High Resolution Monitor System with:-Diagnostic Capability-Systems Monitoring Capability-Multiple Language Capability-Maintenance Tracking-Engine Coolant Temperature GaugeEngine Coolant Temperature Warning Indicator with Audible AlarmEngine Oil Pressure Warning Indicator with Audible AlarmFuel Gauge with Low Fuel IndicatorWork Mode IndicatorAuto Idle IndicatorAlternator Charge IndicatorAir Filter Restriction IndicatorFault Code Alert IndicatorCheck Engine IndicatorWiper Mode IndicatorWork Lights On IndicatorFuel Rate DisplayClockHour MeterMode Selection:-One Work Mode-Two Power Modes-Numerous Attachment ModesAuto-Climate Control/Air Conditioner, Heater with PressurizerAM-FM Radio with BluetoothJDLink™ ReadyMachine Information Center (MIC)Windshield Wiper/Washer with Intermittent SpeedCell Phone Power OutletDedicated Phone Holder3" Retractable Hi-Vis Seat BeltTinted Safety GlassHot/Cold Box CompartmentHornTwo Cup HoldersInterior LightCoat HookFloor MatMotion Alarm with Cancel SwitchTransparent Tinted Roof Hatch with SunshadeFour Fluid-Filled Elastic MountsEasy Access Air Conditioning Filter

## Basic Factory Options - Required

### Destination Codes

|      |                                  |               |
|------|----------------------------------|---------------|
| 0184 | Destination Code - Canada        | No Added Cost |
| 0202 | Destination Code - United States | No Added Cost |



|       |  |               |
|-------|--|---------------|
| 0203  | Destination Code - Puerto Rico (U.S. Territory)  | No Added Cost |
| <hr/> |  |               |
| 0245  | Destination Code - Guam  | No Added Cost |
| <hr/> |  |               |
|       | Operator's Manual and Decals   |               |
| 0259  | English Customer Delivery Packet   | No Added Cost |
| <hr/> |  |               |
|       | Machine Configuration  |               |
| 0401  | Configuration 1  | No Added Cost |
|       | Includes:<br>- 450 mm (18 in) Track with Rubber Crawler Pad<br>(Steel track shoes with vulcanized rubber pads bonded to top of shoes)<br>- Backfill blade<br>- 2.12 m (6 ft 11 in) Arm<br>- Selector Valve and Thumb Bracket<br>- Right, Rear and Left Camera System         |               |
| <hr/> |  |               |
| 0402  | Configuration 2  | US\$1,020.00  |
|       | Includes:<br>- 600 mm (24 in) Steel Track<br>- Backfill blade<br>- 2.12 m (6 ft 11 in) Arm<br>- Selector Valve and Thumb Bracket<br>- Right, Rear and Left Camera System   |               |
| <hr/> |  |               |
| 0403  | Configuration 3  | US\$9,691.00  |
|       | Includes:<br>- 450 mm (18 in) Track with Rubber Crawler Pad<br>(Steel track shoes with vulcanized rubber pads bonded to top of shoes)<br>- Angle Blade with Float<br>- 2.12 m (6 ft 11 in) Arm<br>- Selector Valve and Thumb Bracket<br>- Right, Rear and Left Camera System |               |

## Field Installed Attachments - Optional

### Miscellaneous

|          |   |            |
|----------|---|------------|
| BYT11472 | Pin Kit, 75/85 Excavator Bucket Pin Field Kit | US\$406.00 |
|----------|---|------------|

---

|          |                |            |
|----------|----------------|------------|
| BYT13786 | Case Drain Kit | US\$350.00 |
|----------|----------------|------------|

### Hydraulic Couplers

|          |                         |               |
|----------|-------------------------|---------------|
| AT442602 | Hydraulic Quick Coupler | US\$10,251.00 |
|----------|-------------------------|---------------|

---

|          |  |              |
|----------|--|--------------|
| BYT12978 | Hydraulic Quick Coupler Kit (Variable-type Pin-Grabber) 75-85 - Full Kit with Controls | US\$7,677.00 |
|----------|--|--------------|

### Overall Vehicle

|          |                           |            |
|----------|---------------------------|------------|
| BYT13471 | JDLink Hardware Kit - EXC | US\$350.00 |
|----------|---------------------------|------------|

### G.R.Mfg.

|          |                                   |              |
|----------|-----------------------------------|--------------|
| BYT13647 | Front Window Guard, Polycarbonate | US\$3,982.00 |
|----------|-----------------------------------|--------------|

### Hydraulic Thumb Kits

|          |  |              |
|----------|--|--------------|
| BYT12155 | Direct Thumb Kit, 37 in. with Selector Valve | US\$5,949.00 |
|----------|--|--------------|

---

|          |  |              |
|----------|--|--------------|
| BYT12156 | Direct Thumb Kit, 42 in. with Selector Valve | US\$5,949.00 |
|----------|--|--------------|

#### Buckets, Heavy-Duty

|          |  |              |
|----------|--|--------------|
| BYT11024 | 36 in. Ditching Pin-On Bucket (914mm); 0.49 Cu. Yd. (0.38 Cu. Mt.) | US\$2,014.00 |
|----------|--|--------------|

---

|          |   |              |
|----------|---|--------------|
| BYT11023 | 36 in. Heavy Duty Pin-On Bucket (914 mm); 0.46 Cu. Yd. (0.35 Cu. Mt.) | US\$2,290.00 |
|----------|---|--------------|

---

|          |   |              |
|----------|---|--------------|
| BYT11022 | 30 in. Heavy Duty Pin-On Bucket (762 mm); 0.37 Cu. Yd. (0.28 Cu. Mt.) | US\$2,129.00 |
|----------|---|--------------|

---

|          |   |              |
|----------|---|--------------|
| BYT11021 | 24 in. Heavy Duty Pin-On Bucket (610 mm); 0.33 Cu. Yd. (0.25 Cu. Mt.) | US\$2,122.00 |
|----------|---|--------------|

#### Buckets

|          |  |              |
|----------|--|--------------|
| AT437340 | 18 in. (457 mm) Heavy Duty Bucket, 4.9 c. ft. (0.14 c. m.) | US\$1,926.00 |
|----------|--|--------------|

---

|          |  |              |
|----------|--|--------------|
| AT437344 | 24 in. (611 mm) Heavy Duty Bucket, 8.1 c. ft. (0.23 c. m.) | US\$2,341.00 |
|----------|--|--------------|

---

|          |  |              |
|----------|--|--------------|
| AT437345 | 30 in. (765 mm) Heavy Duty Bucket, 8.9 c. ft. (0.25 c. m.) | US\$2,448.00 |
|----------|--|--------------|

---

|          |  |              |
|----------|--|--------------|
| AT437616 | 36 in. (919 mm) Ditching Bucket, Standard Duty, 10.9 c. ft. (0.31 c. m.) | US\$2,190.00 |
|----------|--|--------------|

---

|          |  |              |
|----------|--|--------------|
| AT437346 | 36 in. (914 mm) Heavy Duty BKH Pin-on Bucket; 12.5 c. ft. (0.35 c. m.) | US\$2,422.00 |
|----------|--|--------------|



---

Manufacturer's Suggested List Price shown. Retail prices may vary by dealer. Unless stated otherwise, taxes, freight, setup, delivery and other dealer specific charges not included in the pricing. Options/items noted with anything other than price will have additional costs. Pricing, availability, and specifications subject to change without notice. Special program pricing may be available on certain models. See dealer for details. Prices are shown in USD unless otherwise noted.



JOHN DEERE

## STANDARD WARRANTY FOR NEW JOHN DEERE CONSTRUCTION, COMPACT CONSTRUCTION (CCE), FORESTRY AND UTILITY PRODUCTS US & CANADA

- **Construction & Forestry Products:** 12 months/unlimited hours (whichever occurs first) Full Machine Standard Warranty
- **Compact Construction Equipment (CCE) Products:** 24 months or 2000 hours (whichever occurs first) Full Machine Standard Warranty
- **C&E Series Pull-Type Scrapers:** 6 months Full Machine Standard Warranty
- **DC & DE Pull-Type Scrapers:** (Model year 2024 and newer) 12 months Full Machine Standard Warranty; 36 months or 10,000 hours (whichever comes first) StructurALL Warranty
- **Scraper Tractors:** 24 Months or 2000 Hours (whichever occurs first) Full Machine Standard Warranty
- **Forestry Attachments:** 12 Months or 2000 Hours (whichever occurs first) Full Machine Standard Warranty

The "Standard Warranty" is part of the warranty protection package available from John Deere Construction & Forestry Company (John Deere Limited in Canada) ("John Deere") to purchasers of new John Deere products ("product"):

**STANDARD Warranty** is John Deere's standard new product warranty, described in this document, provided at no additional charge to the purchaser.

**EXTENDED Warranty** is a separate repair contract made available by John Deere for purchasers who wish to complement their Standard Warranty coverage. Complete Extended Warranty details, including coverage options and limitations, are set forth in the Application for Extended Warranty, which is available from authorized John Deere dealers.

**STRUCTURALL Warranty** applies to certain structural components as listed below and as described in this document.

**FACTORY-INSTALLED UNDERCARRIAGE Warranty** applies to certain undercarriage components as listed below and as described in this document.

### A. STANDARD WARRANTY - GENERAL PROVISIONS

John Deere will repair or replace, at its option, any parts (except those specified below) of a new John Deere product that, as delivered to the original retail purchaser(s), are defective in material or workmanship. Performance of this warranty will be free of charge for parts and labor, except as otherwise stated below. Standard Warranty applies only to purchases from John Deere and authorized John Deere dealers and, except as otherwise provided in the next sentence and section L below, is extended only to the original retail purchaser of the product. Remaining Standard Warranty applicable to a used John Deere product is transferred to a subsequent purchaser of the product only if the subsequent purchaser requests a transfer from an authorized John Deere dealer before the product's Standard Warranty expires. Coverage begins on the date of delivery of the product to the original retail purchaser. For purposes of this warranty, a product that has been rented, used for demonstration purposes for 150 or more hours, or otherwise used prior to its original retail purchase has been "used" for the total duration of such use. Warranty statements required by law covering engine emissions-related parts and components are found on a separate written warranty certificate provided to the purchaser at the time of the original retail purchase.

### B. WHAT IS COVERED BY STANDARD WARRANTY

All parts of a new John Deere product (except those noted in Sections D and E below) are covered during the Standard Warranty period set out above.

### C. EXCLUSIVE REMEDY

The repair or replacement of covered parts or components that are defective, as provided in Sections A, B, D.2 and D.3 herein, shall be the purchaser's exclusive remedy for any defect in the product. However, if after repeated attempts such repair or replacement fails to correct the performance problem caused by the defect, the purchaser's sole remedy shall be a refund of the amount paid for the product (in exchange for a return of the product), excluding any transportation charges, license fees, taxes and insurance premiums, and less a reasonable allowance for use of



the product prior to its return. In no event will the dealer, John Deere or any company affiliated with John Deere be liable for any incidental or consequential damages, including but not limited to loss of profits, rental of substitute equipment or other commercial loss. Correction of defects in the manner provided above shall constitute fulfillment of all liabilities of the Dealer, John Deere, or any company affiliated with John Deere to the purchaser or any other person, whether based upon contract, tort, strict liability, or otherwise. This limitation does not apply to claims for personal injury.

#### A. ITEMS COVERED SEPARATELY -

1. Standard Warranty does not apply to batteries, radios, tires, cameras, or to Cummins, MTU or Detroit Diesel Engines installed in John Deere products, which are covered by separate written warranties.
2. Factory-Installed Undercarriage Warranty covers all non-rubberized factory-installed undercarriage wear components for 3 years or 4,000 hours from the date of delivery to the original retail purchaser, whichever occurs first (unless terminated earlier under Section F, below). For purposes of this warranty, a product that has been rented, used for demonstration purposes for 150 or more hours, or otherwise used prior to its original retail purchase has been "used" for the total duration of such use. In addition to the items listed in section E below, Factory-Installed Undercarriage Warranty does not cover: failures due to wear, machine application, maintenance practices, or improper machine configuration; removal and installation labor; transportation or hauling costs; unapproved parts; non-wear items; and rubberized undercarriage components such as rubber tracks. Warranty claims will be pro-rated based upon wear of the failed component and whether track shoe width is approved by John Deere. Factory-Installed Undercarriage Warranty does not apply to Scraper Tractors.
3. StructurALL Warranty for new John Deere Products (except Compact Excavators & Loaders, Skid-Steer Loaders, Compact Track Loaders, Scraper Tractors, Pull-Type Scrapers, and Forestry Attachments, which are not eligible for StructurALL Warranty) begins at the date of delivery to the original retail purchaser and ends (unless terminated earlier under Section F, below) after three (3) years, or 10,000 hours (whichever occurs first). For purposes of this warranty, a product that has been rented, used for demonstration purposes for 150 or more hours, or otherwise used prior to its original retail purchase has been "used" for the total duration of such use. **StructurALL Warranty applies only to the following structural components listed below as installed on the product at the time of original manufacture. If a particular component is not listed below it is not covered by StructurALL Warranty.**

Arm; Articulation Joint (incl. pins & bushings); Bin Frame; Boom; Carbody; C-Frame\*; Circle Frame; Coupler (John Deere built ONLY); Dipperstick; Draft Frame; Engine Frame; Equipment Frame; Grapple Arch and Grapple Boom; Loader Arm; Loader Frame; Mainframe; Moldboard Lift Arm; NeverGrease™ Pin Joints [Includes steering pin and bushing joints (standard equipment), roller elements (roller bearings) in bucket to boom joints and sliding elements (bushing) for boom and linkage joints (optional equipment)]; Rollover Protection Structure (ROPS); Side Frame; Swing Frame; Track Frame; Undercarriage Frame; X-Frame; Z-bar loader linkage (including bell crank and bucket driver link); Specialty booms and arms marketed as "heavy duty" by John Deere.

*Items Covered by StructurALL for Cut-to-Length Forestry Machines:* Front frame (welded assembly); Rear frame (welded assembly); Crane king post with basement; Middle joint frame; Cabin swing frame; Main Boom

StructurALL Warranty does not apply to:

1. Any product used primarily in extreme duty or severe duty applications such as but not limited to: demolition and wrecking, chemical plant (including fertilizer plants), salt mines, steel mill, land fill and transfer stations, scrap handling, scarifying and other applications that are similarly destructive or similarly heavy duty except specialty booms and arms as stated in Section D.3 above.
2. C-Frames on Crawlers equipped with root rakes or used in forestry applications unless equipped with an "extreme duty" reinforcement package.
3. Cut-to-Length Forestry Heads and Slash Bundler Units.
4. Crawlers equipped with optional side booms.
5. Cut-to-Length Forestry, Excavator, and Log Loader swing bearings.
6. Motor Graders equipped with front- or rear-mounted snow wings.



## **A. ITEMS NOT COVERED -**

John Deere is NOT responsible for the following:

1. Freight.
2. Adjustments to compensate for wear, for periodic maintenance or adjustments that result from normal wear and tear.
3. Damage caused by unapproved adjustments (electronic or mechanical) to machine or machine components outside of published specifications including but not limited to engine, hydraulic components and relief valves.
4. Program updates, calibrations, and pressure adjustments.
5. Additional Labor Time - Above Dealer Labor Rate.
6. Additional Cleaning - Above Dealer Labor Rate.
7. Rental Fees.
8. Depreciation or damage caused by normal wear or application, lack of reasonable and proper maintenance, failure to follow operating instructions, misuse, lack of proper protection during storage, vandalism, negligence, collision, expenses to seek reinstatement of warranty following theft or loss of Product, or other accidents.
9. Premiums charged for Overtime Labor.
10. Transportation to and from the dealership.
11. Travel time, mileage, or service calls by the dealer.
12. Non-John Deere components or modifications, Rotobac grapples, and attachments installed aftermarket.
13. Shop supplies and maintenance items such as, but not limited to: filters, fuels, oil, hydraulic fluid, lubricants, coolants, conditioners, shop towels, cleaners and degreasers.
14. Torn, cut, or worn hoses.
15. Wear items, such as, but not limited to: body liner, belts, blades, bulbs, lubricated joints (including pins and bushings), dry brakes, brake linings, dry clutch linings, saw blades, chains, skidder grapple shocks, color marking nozzles, and articulation bumpers.
16. Items such as cutting-edge parts, delimbing knives, bucket teeth and rubber track are not warranted for depreciation or damage caused by normal wear, lack of proper maintenance, misuse, failure to follow operating instructions, the elements or accident.
17. Any defect in a non-covered component, or damage to or failure of a covered component caused by a defect in a non-covered component.
18. Secondary damage which occurs from continued operation of a product after recognition of the occurrence of a failure.
19. Parts supplied by or repairs, maintenance or modifications performed by someone other than an authorized John Deere dealer, including any damage caused by such use of parts, repairs, maintenance, or modifications not performed by an authorized John Deere dealer.
20. The use of "track type" tire chains on Feller Bunchers and Skidders is an unapproved modification. Warranty will be void on these machines using "track type" tire chains.
21. Topping off fluids when fluid levels fall in the range between low and full
22. Parts/Kits not ordered on machine and installed aftermarket. These parts will be covered by any applicable parts warranty.
23. Attachments installed aftermarket – i.e., Winch not installed at factory.
24. Custom options installed outside the factory – i.e., G.R. Manufacturing option packages.
25. Used Products (except as otherwise provided in section L below).
26. Lost or stolen Products.

## **B. TERMINATION OF WARRANTY-**

John Deere is relieved of its obligations under Standard Warranty, StructurALL Warranty, Factory-Installed Undercarriage Warranty and/or Extended Warranty if:

1. The product is modified or altered in ways not approved by John Deere; or
2. Any unapproved or improperly sized attachment is installed on the product. Approval and attachment size shall be at John Deere's sole discretion. (Consult dealer prior to installing attachments or product modification).
3. The product is moved outside the US and/or Canada.



#### **A. PARTS REPLACED UNDER WARRANTY -**

Only new or remanufactured parts or components furnished or approved by John Deere, will be used if John Deere elects to repair the product. If any such part or component is defective in material or workmanship when installed in the product, John Deere will repair or replace, as it elects, such defective part or component, provided the defect is reported to an authorized John Deere dealer within 90 days of installation or before expiration of the applicable Standard Warranty, Factory-Installed Undercarriage Warranty and/or StructurALL Warranty whichever is later.

#### **B. TELEMATICS**

*NOTICE: Products may be equipped with telematics hardware and software ("Telematics") that transmit data to John Deere/ Dealer. Purchaser may deactivate Telematics at [www.jdlink.com](http://www.jdlink.com).*

Notwithstanding Purchaser's right, title or interest in the Products, Purchaser agrees that John Deere and Dealer (their affiliates, successors and assigns), without further notice to Purchaser have the right to:

1. Access, use, collect and disclose any data generated by, collected by, or stored in, Products or any hardware or devices interfacing with Products ("Machine Data");
2. Access Machine Data directly through data reporting devices integrated within, or attached to, Products, including Telematics ("Data Reporting Systems"); and
3. Update the Data Reporting Systems software from time to time. Machine Data will only be used in accordance with John Deere's Machine Data Policy, located at [www.JohnDeere.com/MachineDataPolicy](http://www.JohnDeere.com/MachineDataPolicy).

#### **C. OBTAINING WARRANTY SERVICE -**

To obtain warranty service, the purchaser must request warranty service from a John Deere dealer authorized to sell the product to be serviced. When making such a request, the purchaser must present evidence of the product's delivery date, make the product available at the dealer's place of business, and inform the dealer in what way the purchaser believes the product to be defective. Standard Warranty, Factory-Installed Undercarriage Warranty and/or StructurALL Warranty repairs may be made in the field if the purchaser and servicing dealer so desire. However, John Deere will not be responsible for any charges (such as dealer travel time, mileage or extra labor) that would not have been incurred had the product been repaired at the dealer's place of business.

#### **D. NO IMPLIED WARRANTY, CONDITIONS OR OTHER REPRESENTATION -**

Where permitted by law, neither John Deere nor any company affiliated with it makes any warranties, representations, conditions or promises, express or implied, as to the quality, performance, or freedom from defect of its products, other than those set forth in this document and **NO IMPLIED WARRANTY OF MERCHANTABILITY, CONDITIONS OR FITNESS IS MADE.**

#### **E. NO DEALER WARRANTY -**

The selling dealer makes no warranty of its own on any item covered by this warranty and makes no warranty on other items unless the dealer delivers to the purchaser a separate written warranty certificate specifically warranting the item. The dealer has no authority to make any representation or promise on behalf of John Deere, or to modify the terms or limitations of this warranty in any way.

#### **F. USED JOHN DEERE PRODUCTS ONLY -**

John Deere will transfer remaining Standard Warranty, Factory-Installed Undercarriage Warranty and/or StructurALL Warranty to the purchaser of a used John Deere construction and/or forestry product that has been used for less than the full warranty period provided at the product's original retail purchase. This transfer is not effective until change of ownership is registered by a John Deere dealer. **ALL THE TERMS, INCLUDING LIMITATIONS AND EXCLUSIONS, OF THE JOHN DEERE STANDARD WARRANTY, FACTORY-INSTALLED UNDERCARRIAGE WARRANTY, AND/OR STRUCTURALL WARRANTY ORIGINALLY PROVIDED FOR THE PRODUCT REMAIN IN EFFECT AND APPLICABLE.**





Company ID Number: 513478

## THE E-VERIFY PROGRAM FOR EMPLOYMENT VERIFICATION MEMORANDUM OF UNDERSTANDING

### ARTICLE I

#### PURPOSE AND AUTHORITY

This Memorandum of Understanding (MOU) sets forth the points of agreement between the Department of Homeland Security (DHS) and Warrior Tractor & Equipment Co., Inc. (Employer) regarding the Employer's participation in the Employment Eligibility Verification Program (E-Verify). This MOU explains certain features of the E-Verify program and enumerates specific responsibilities of DHS, the Social Security Administration (SSA), and the Employer. E-Verify is a program that electronically confirms an employee's eligibility to work in the United States after completion of the Employment Eligibility Verification Form (Form I-9). For covered government contractors, E-Verify is used to verify the employment eligibility of all newly hired employees and all existing employees assigned to Federal contracts or to verify the entire workforce if the contractor so chooses.

Authority for the E-Verify program is found in Title IV, Subtitle A, of the Illegal Immigration Reform and Immigrant Responsibility Act of 1996 (IIRIRA), Pub. L. 104-208, 110 Stat. 3009, as amended (8 U.S.C. § 1324a note). Authority for use of the E-Verify program by Federal contractors and subcontractors covered by the terms of Subpart 22.18, "Employment Eligibility Verification", of the Federal Acquisition Regulation (FAR) (hereinafter referred to in this MOU as a "Federal contractor with the FAR E-Verify clause") to verify the employment eligibility of certain employees working on Federal contracts is also found in Subpart 22.18 and in Executive Order 12989, as amended.

### ARTICLE II

#### FUNCTIONS TO BE PERFORMED

##### A. RESPONSIBILITIES OF SSA

1. SSA agrees to provide the Employer with available information that allows the Employer to confirm the accuracy of Social Security Numbers provided by all employees verified under this MOU and the employment authorization of U.S. citizens.
2. SSA agrees to provide to the Employer appropriate assistance with operational problems that may arise during the Employer's participation in the E-Verify program. SSA agrees to provide the Employer with names, titles, addresses, and telephone numbers of SSA representatives to be contacted during the E-Verify process.
3. SSA agrees to safeguard the information provided by the Employer through the E-Verify program procedures, and to limit access to such information, as is appropriate by law, to individuals responsible for the verification of Social Security Numbers and for evaluation of the E-Verify program or such other persons or entities who may be authorized by SSA as governed





Company ID Number: 513478

To be accepted as a participant in E-Verify, you should only sign the Employer's Section of the signature page. If you have any questions, contact E-Verify at 888-464-4218.

|  |                   |
|--|-------------------|
| <b>Employer Warrior Tractor &amp; Equipment Co., Inc.</b>      |                   |
| <b>Stanley McCracken</b>                                       |                   |
| Name (Please Type or Print)                                    | Title             |
| <b>Electronically Signed</b>                                   | <b>03/01/2012</b> |
| Signature  | Date              |
| <b>Department of Homeland Security – Verification Division</b> |                   |
| <b>USCIS Verification Division</b>                             |                   |
| Name (Please Type or Print)                                    | Title             |
| <b>Electronically Signed</b>                                   | <b>03/01/2012</b> |
| Signature  | Date              |

**Information Required for the E-Verify Program**

**Information relating to your Company:**

|                                 |                                       |
|---------------------------------|---------------------------------------|
| Company Name:                   | Warrior Tractor & Equipment Co., Inc. |
| Company Facility Address:       | 6801 McFarland Blvd                   |
|                                 | Northport, AL 35476                   |
| Company Alternate Address:      | P O Box 412                           |
|                                 | Northport, AL 35476                   |
| County or Parish:               | TUSCALOOSA                            |
| Employer Identification Number: | 630588737                             |



**Company ID Number: 513478**

|   |   |
|---|---|
| North American Industry Classification Systems Code:  | 423                                     |
| Administrator:  | Warrior Tractor and Equipment Co., Inc. |
| Number of Employees:  | 100 to 499                              |
| Number of Sites Verified for:   | 1                                       |
| <b>Are you verifying for more than 1 site? If yes, please provide the number of sites verified for in each State:</b> |   |
| <ul style="list-style-type: none"><li>• ALABAMA 1 site(s)</li></ul>   |   |

**Information relating to the Program Administrator(s) for your Company on policy questions or operational problems:**

|                   |                           |             |                  |
|-------------------|---------------------------|-------------|------------------|
| Name:             | Stanley N McCracken       |             |                  |
| Telephone Number: | (205) 339 - 0300          | Fax Number: | (205) 333 - 0101 |
| E-mail Address:   | wte024@warriortractor.com |             |                  |



# 75 P

Excavator



JOHN DEERE







## ***BUILT FOR WHAT YOU DO — AND THEN SOME***

When we designed the 75 P-Tier, we started with a larger, brand-new cab to keep operators comfortable. Then we combined the agility and adaptability of our smaller compact models with the productive performance and versatile capabilities of the largest excavators in our wide-ranging lineup. And we amped up engine horsepower by 17 percent compared to the previous model, added a turbocharger for improved performance at elevated altitudes, increased dig forces and hydraulic pressure, and optimized machine stability by 10 percent. With customer-inspired features like these, plus some pretty big options, this enhanced excavator can be just the right-size solution for your toughest tasks.



## 75 P-TIER EXCAVATOR

## FEATURES

### Transit authority

Reduced-tail-swing configuration enhances machine flexibility, enabling the 75 P-Tier to maneuver nimbly and work efficiently on tight and congested jobsites. Plus this go-to taskmaster transports easily, making it ideal for "dig-and-go" projects.

### Modes of operation

Engine performance and hydraulic flow are optimally balanced for predictable operation. Two productivity modes allow you to choose the digging style that fits the job: **Power** delivers a balance of speed and fuel economy for normal operation, while **Economy** reduces engine speed and helps save fuel.

### In control and comfortable

Ergonomically correct short-throw pilot joysticks enable smooth, precise fingertip control. Handy new swing-boom functionality in the joystick eliminates a hard-to-reach floor pedal and clears space to move your legs.

### At home in the cab

All-new operator station that's more spacious than previous models features a completely new adjustable and heated air-suspension seat with armrests, comfortable air-conditioning system, and ample entry-way and legroom. Wide expanse of front and side glass, narrow front cab posts, large tinted overhead window, and numerous mirrors enable outstanding visibility. Isolated cab mounts help reduce noise and vibration.

### Stay connected

New 8-inch multi-language LCD monitor equipped with Bluetooth® connectivity to phone calls and music provides intuitive access to a wealth of information and functions. Just turn and tap the rotary dial to select work mode, access operating info, check service intervals, source diagnostic codes, adjust cab temperature, and tune the radio. Handy USB port and cellphone holder make it easy to stay in touch.

### Bring your work into focus

Standard LED lighting illuminates dusty and before-daylight or after-dark jobsites. Integrated into the all-new, high-resolution main monitor for optimal image quality, the standard right rear left camera system with additional LED surround lighting work together to supplement 270-degree visibility of the area around the machine, even in low-light conditions.



**REDUCED-TAIL-SWING**  
DESIGN PROVIDES FLEXIBLE  
PERFORMANCE IN TIGHT SPACES  
COMPARED TO CONVENTIONAL TAIL-SWING MACHINES



### Bank on these blades

Standard blade is ideal for cleanup and backfilling. It provides extra lift capacity and stability when running hydraulic hammers and other heavy-duty attachments. Optional new angle blade with float redefines earthmoving and grading.

### Rugged resistance

Large idlers, rollers, and strutted links enable the undercarriage to withstand and command. Thick-plate single-sheet mainframe, box-section track frames, double-seal swing bearing, and new boom-cylinder guard deliver rock-solid durability. All structures and components are built to resist stress.

### It's all right here

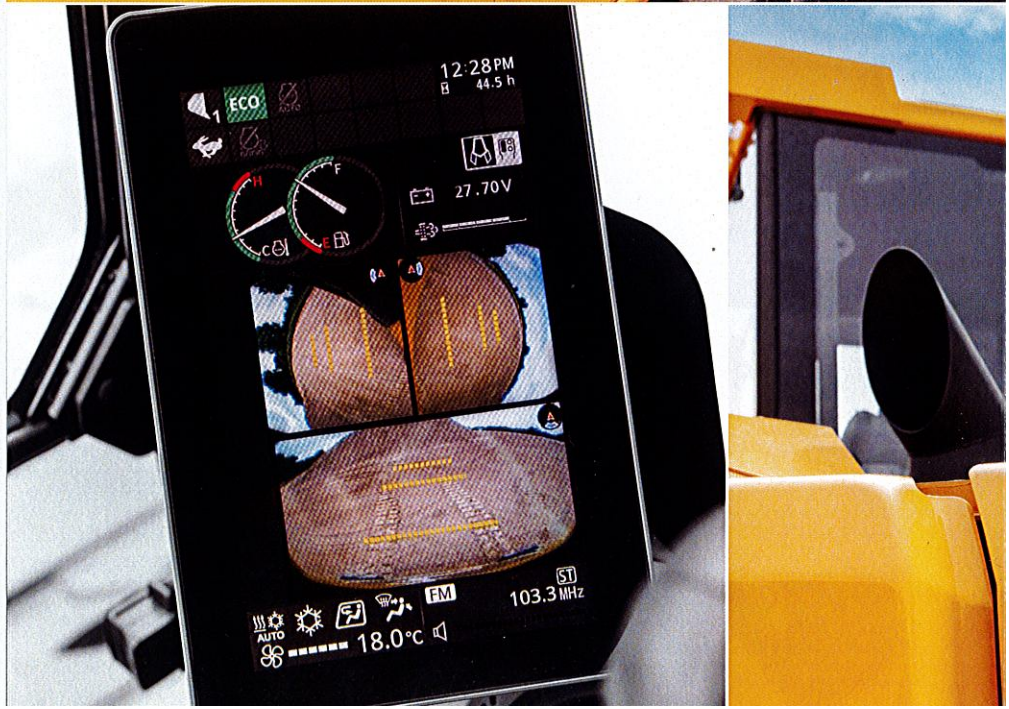
Large hinged doors provide easy wide-open access to service items including cooler and condenser cleanout. Remote oil-filter and filter-bank access, remote swing-bearing grease bank, generous fuel tank, and 500- and 5,000-hour engine and hydraulic oil-service intervals minimize downtime for routine maintenance. Fluid-level sight gauges are conveniently located and can be checked at a glance.

### Auxiliary forces

Factory-installed standard auxiliary hydraulics with proportional control boost jobsite productivity and attachment capability. High-pressure, high-flow auxiliary hydraulic packages power the addition of a hydraulic hammer or a wide range of over 100 John Deere attachments.

### Where the rubber meets the road

Optional rubber track pads let the 75 P-Tier set up and work on paved surfaces and even cross curbs without doing damage.





## 75 P-TIER EXCAVATOR



### WIDE-OPEN ACCESS EASES ROUTINE MAINTENANCE

#### Work your way

Undercarriage options include sealed and lubricated chain with rubber pads or steel semi-grousers from 18- to 24-inches wide. Numerous bucket options let you spec the excavator for the way you work.

#### Connected machines

The 75 P-Tier Excavator arrives JDLink™ ready and connectivity capable. Via a simple dealer-installed hardware kit, you can analyze critical machine data, track utilization, review diagnostic alerts, and more from **the John Deere Operations Center™**. The Operations Center also enables **John Deere Connected Support™**, which uses data from thousands of connected machines to proactively address issues before they arise. Once you opt in, your dealer can remotely monitor machine health, diagnose problems, and even update machine software without a trip to the jobsite.\*

\*Availability varies by region and product. Options not available in every country.







While general information, pictures, and descriptions are provided, some illustrations and text may include product options and accessories NOT AVAILABLE in all regions, and in some countries products and accessories may require modifications or additions to ensure compliance with the local regulations of those countries.

| <b>Engine</b>   |  | <b>75 P-TIER</b>  |                   |
|---|--|---|-------------------|
| Manufacturer and Model  |  | Yanmar 4TNV98CT   |                   |
| Non-Road Emission Standard  |  | EPA Final Tier 4/EU Stage IV  |                   |
| Net Power (ISO 14396)   |  | 50.4 kW (67.6 hp) at 2,000 rpm  |                   |
| Cylinders   |  | 4   |                   |
| Displacement  |  | 3.3 L (202 cu. in.)   |                   |
| Aspiration  |  | Turbocharger  |                   |
| Off-Level Capacity  |  | 70% (35 deg.)   |                   |
| <b>Cooling</b>  |  |   |                   |
| Variable-speed fan; viscous clutch  |  |   |                   |
| <b>Powertrain</b>   |  |   |                   |
| 2-speed propel with automatic shift   |  |   |                   |
| <b>Maximum Travel Speed</b>   |  |   |                   |
| Low   |  | 3.1 km/h (1.9 mph)  |                   |
| High  |  | 5.0 km/h (3.1 mph)  |                   |
| Drawbar Pull  |  | 7240 kgf (15,961 lb.)   |                   |
| <b>Hydraulics</b>   |  |   |                   |
| Open center, load sensing   |  |   |                   |
| <b>Main Pumps</b>   |  | 3 variable-displacement axial-piston pumps  |                   |
| Maximum Pump Flow   |  | 2 x 72 + 56 L/m (2 x 19 + 15 gpm)   |                   |
| <b>Pilot Pump</b>   |  | 1 gear  |                   |
| Maximum Rated Flow  |  | 20 L/m (5.3 gpm)  |                   |
| System Relief Pressure  |  | 4300 kPa (624 psi)  |                   |
| <b>System Operating Pressure</b>  |  |   |                   |
| Implement Circuits  |  | 28 000 kPa (4061 psi)   |                   |
| Travel Circuits   |  | 31 600 kPa (4,583 psi)  |                   |
| Swing Circuits  |  | 26 100 kPa (3,785 psi)  |                   |
| <b>Controls</b>   |  | Pilot levers, short stroke, low effort; hydraulic pilot controls with shutoff lever |                   |
| <b>Cylinders</b>  |  |   |                   |
| Heat-treated, chrome-plated, polished cylinder rods; hardened steel (replaceable bushings) pivot pins |  |   |                   |
|   |  | <i>Bore</i>   | <i>Stroke</i>     |
| <b>Boom (1)</b>   |  | 115 mm (4.5 in.)  | 885 mm (34.8 in.) |
| <b>Arm (1)</b>  |  | 95 mm (3.7 in.)   | 900 mm (35.4 in.) |
| <b>Bucket (1)</b>   |  | 85 mm (3.3 in.)   | 730 mm (28.7 in.) |
| <b>Electrical</b>   |  |   |                   |
| Batteries   |  | 2 x 12 volt   |                   |
| Battery Capacity  |  | 2 x 450 CCA   |                   |
| Alternator Rating   |  | 60 amp  |                   |
| Work Lights   |  | 2 LED: 1 mounted on boom and 1 mounted on frame                                     |                   |
| <b>Undercarriage</b>  |  |   |                   |
| <b>Rollers (each side)</b>  |  |   |                   |
| Carrier   |  | 1   |                   |
| Track   |  | 5   |                   |
| <b>Shoes (each side)</b>  |  | 40  |                   |
| <b>Track</b>  |  |   |                   |
| Adjustment  |  | Hydraulic   |                   |
| Chain   |  | Sealed and lubricated   |                   |
| <b>Swing Mechanism</b>  |  |   |                   |
| Swing Speed   |  | 10.1 rpm  |                   |
| Swing Torque  |  | 16 600 Nm (12,244 lb.-ft.)  |                   |



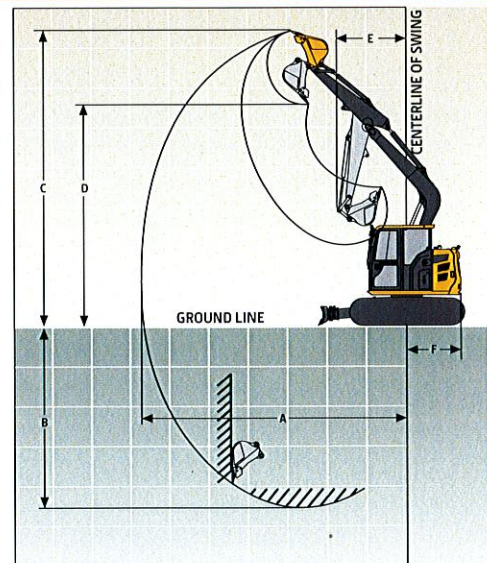
## 75 P-TIER EXCAVATOR SPECIFICATIONS

# 75

# P

While general information, pictures, and descriptions are provided, some illustrations and text may include product options and accessories NOT AVAILABLE in all regions, and in some countries products and accessories may require modifications or additions to ensure compliance with the local regulations of those countries.

| Ground Pressure  |  | 75 P-TIER              |
|--|--|------------------------|
| 450-mm (18 in.) Rubber Crawler Pads  |  | 37 kPa (5.4 psi)       |
| 600-mm (24 in.) Triple Semi-Grouser Shoes  |  | 29 kPa (4.2 psi)       |
| Serviceability   |  |                        |
| Refill Capacities  |  |                        |
| Fuel Tank  |  | 125 L (33 gal.)        |
| Cooling System   |  | 13.1 L (3.5 gal.)      |
| Engine Oil With Filter   |  | 12.3 L (3.2 gal.)      |
| Hydraulic Tank   |  | 52 L (14 gal.)         |
| Hydraulic System   |  | 100 L (26 gal.)        |
| Propel Gearbox (each)  |  | 1.2 L (1.3 qt.)        |
| Operating Weights  |  |                        |
| With 75-kg (165 lb.) Operator, Oil, Water, Full Fuel Tank, 3.67-m (12 ft. 0 in.) Boom, and 2.12-m (6 ft. 11 in.) Arm |  |                        |
| With 450-mm (18 in.) Track With Rubber   |  | 8418 kg (18,559 lb.)   |
| Crawler Pad (steel track shoes with vulcanized rubber pads bonded to top of shoes)                                   |  |                        |
| With 600-mm (24 in.) Steel Track   |  | 8554 kg (18,858 lb.)   |
| With 450-mm (18 in.) Rubber Crawler Pads   |  | 8766 kg (19,326 lb.)   |
| Optional Components  |  |                        |
| Undercarriage (with the following)   |  |                        |
| 600-mm (24 in.) Triple Semi-Grouser Shoes  |  | 3061 kg (6,748 lb.)    |
| 450-mm (18 in.) Rubber Crawler Pads  |  | 2925 kg (6,449 lb.)    |
| 1-Piece Boom (with arm cylinder)   |  | 485 kg (1,069 lb.)     |
| 2.12-m (6 ft. 11 in.) Arm With Bucket Cylinder and Linkage   |  | 282 kg (622 lb.)       |
| Boom Lift Cylinders (2), Total Weight  |  | 178 kg (392 lb.)       |
| Counterweight, Standard  |  | 1165 kg (2,568 lb.)    |
| Operating Dimensions   |  |                        |
| Arm Length   |  |                        |
| Arm Digging Force (ISO)  |  | 35.3 kN (7,936 lb.)    |
| Bucket Digging Force (ISO)   |  | 59.0 kN (13,264 lb.)   |
| A Maximum Reach  |  | 6.87 m (22 ft. 6 in.)  |
| B Maximum Digging Depth  |  | 4.65 m (15 ft. 3 in.)  |
| C Maximum Cutting Height   |  | 7.58 m (24 ft. 10 in.) |
| D Maximum Dumping Height   |  | 5.48 m (18 ft. 0 in.)  |
| E Minimum Swing Radius   |  | 2.12 m (6 ft. 11 in.)  |
| F Tail-Swing Radius  |  | 1.39 m (4 ft. 7 in.)   |

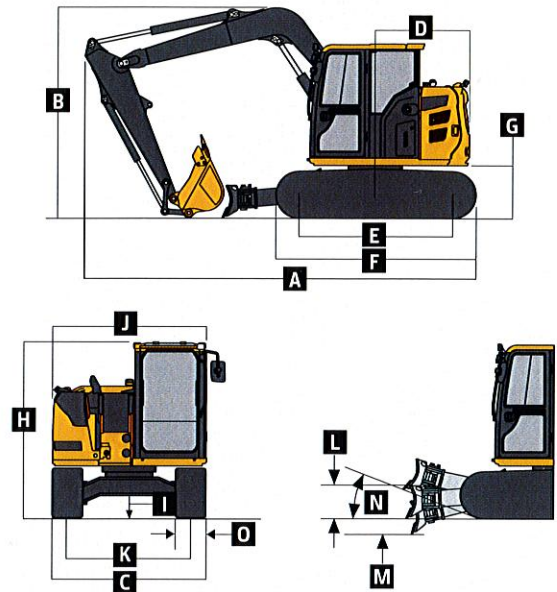




# 75 P-TIER

While general information, pictures, and descriptions are provided, some illustrations and text may include product options and accessories NOT AVAILABLE in all regions, and in some countries products and accessories may require modifications or additions to ensure compliance with the local regulations of those countries.

| Machine Dimensions    |  | 75 P-TIER             |
|-----------------------|--|-----------------------|
| Arm Length            |  | 2.12 m (6 ft. 11 in.) |
| A                     | Overall Length                             | 6.32 m (20 ft. 9 in.) |
| B                     | Overall Height in Transport Position       | 2.73 m (8 ft. 11 in.) |
| C Undercarriage Width |  |                       |
|                       | With 450-mm (18 in.) Rubber Crawler Pad    | 2.20 m (7 ft. 3 in.)  |
|                       | With 600-mm (24 in.) Steel Track           | 2.47 m (8 ft. 1 in.)  |
| D                     | Rear-End Length/Swing Radius               | 1.39 m (4 ft. 7 in.)  |
| E                     | Distance Between Idler/Sprocket Centerline | 2.30 m (7 ft. 6 in.)  |
| F                     | Undercarriage Length                       | 2.90 m (9 ft. 6 in.)  |
| G                     | Counterweight Clearance                    | 0.72 m (28 in.)       |
| H                     | Cab Height                                 | 2.52 m (8 ft. 3 in.)  |
| I                     | Ground Clearance                           | 360 mm (14 in.)       |
| J                     | Upperstructure Width                       | 2.35 m (7 ft. 9 in.)  |
| K                     | Gauge Width                                | 1.75 m (5 ft. 9 in.)  |
| L                     | Blade Lift Height                          | 370 mm (15 in.)       |
|                       | Blade Height                               | 472 mm (19 in.)       |
|                       | Blade Width                                |                       |
|                       | With 450-mm (18 in.) Rubber Crawler Pad    | 2200 mm (7 ft. 9 in.) |
|                       | With 600-mm (24 in.) Steel Track           | 2200 mm (7 ft. 3 in.) |
| M                     | Blade Cut Below Grade                      | 290 mm (11 in.)       |
| N                     | Blade Lift Angle                           | 27 deg.               |
| O Track Width         |  |                       |
|                       | With 450-mm (18 in.) Rubber Crawler Pad    | 0.45 m (18 in.)       |
|                       | With 600-mm (24 in.) Steel Track           | 0.60 m (24 in.)       |



## Lift Capacities

**Boldface type** indicates hydraulically limited capacities; lightface type indicates stability-limited capacities, in kg (lb.). Ratings are at bucket lift hook, using standard counterweight, situated on firm, level, uniform supporting surface. Total load includes weight of cables, hook, etc. Figures do not exceed 87% of hydraulic capacity or 75% of weight needed to tip machine. All lift capacities are based on ISO 10567.

### HORIZONTAL DISTANCE FROM CENTERLINE OF ROTATION

| LOAD POINT HEIGHT   | 1.5 m (5 ft.)           |                         | 3.0 m (10 ft.)         |                        | 4.5 m (15 ft.)         |                        |
|---|-------------------------|-------------------------|------------------------|------------------------|------------------------|------------------------|
|   | Over Front              | Over Side               | Over Front             | Over Side              | Over Front             | Over Side              |
| <i>With 3.67-m (12 ft. 0 in.) boom, 2.12-m (6 ft. 11 in.) arm, and 450-mm (18 in.) track with rubber crawler pad (steel track shoes with vulcanized rubber pads bonded to top of shoes), with blade on ground, without bucket</i> |                         |                         |                        |                        |                        |                        |
| 4.5 m (15 ft.)  |                         |                         |                        |                        | 1559<br><b>(3,436)</b> | 1559<br><b>(3,436)</b> |
| 3.0 m (10 ft.)  |                         |                         | 1936<br><b>(4,269)</b> | 1936<br><b>(4,269)</b> | 1696<br><b>(3,738)</b> | 1565<br><b>(3,451)</b> |
| 1.5 m (5 ft.)   |                         |                         | 2976<br><b>(6,560)</b> | 2678<br><b>(5,904)</b> | 2046<br><b>(4,511)</b> | 1475<br><b>(3,251)</b> |
| Ground Line   |                         |                         | 3631<br><b>(8,005)</b> | 2487<br><b>(5,482)</b> | 2338<br><b>(5,155)</b> | 1396<br><b>(3,077)</b> |
| -1.5 m (-5 ft.)   | 3901<br><b>(8,599)</b>  | 3901<br><b>(8,599)</b>  | 3636<br><b>(8,011)</b> | 2442<br><b>(5,384)</b> | 2327<br><b>(5,131)</b> | 1370<br><b>(3,023)</b> |
| -3.0 m (-10 ft.)  | 5112<br><b>(11,269)</b> | 5112<br><b>(11,269)</b> | 3130<br><b>(6,183)</b> | 2520<br><b>(5,555)</b> |                        |                        |
| <i>With 3.67-m (12 ft. 0 in.) boom, 2.12-m (6 ft. 11 in.) arm, and 600-mm (24 in.) triple semi-grouser shoes, with blade on ground, without bucket</i>  |                         |                         |                        |                        |                        |                        |
| 4.5 m (15 ft.)  |                         |                         |                        |                        | 1559<br><b>(3,436)</b> | 1559<br><b>(3,436)</b> |
| 3.0 m (10 ft.)  |                         |                         | 1936<br><b>(4,269)</b> | 1936<br><b>(4,269)</b> | 1696<br><b>(3,738)</b> | 1592<br><b>(3,509)</b> |
| 1.5 m (5 ft.)   |                         |                         | 2976<br><b>(6,560)</b> | 2723<br><b>(6,004)</b> | 2046<br><b>(4,511)</b> | 1501<br><b>(3,309)</b> |
| Ground Line   |                         |                         | 3631<br><b>(8,005)</b> | 2532<br><b>(5,582)</b> | 2338<br><b>(5,155)</b> | 1422<br><b>(3,136)</b> |
| -1.5 m (-5 ft.)   | 3901<br><b>(8,599)</b>  | 3901<br><b>(8,599)</b>  | 3634<br><b>(8,011)</b> | 2488<br><b>(5,485)</b> | 2327<br><b>(5,131)</b> | 1398<br><b>(3,081)</b> |
| -3.0 m (-10 ft.)  | 5112<br><b>(11,269)</b> | 5112<br><b>(11,269)</b> | 2805<br><b>(6,183)</b> | 2565<br><b>(5,655)</b> |                        |                        |

Lift Capacities (continued)

75 P-TIER

**Boldface type** indicates hydraulically limited capacities; **lightface type** indicates stability-limited capacities, in kg (lb.). Ratings are at bucket lift hook, using standard counterweight, situated on firm, level, uniform supporting surface. Total load includes weight of cables, hook, etc. Figures do not exceed 87% of hydraulic capacity or 75% of weight needed to tip machine. All lift capacities are based on ISO 10567.

| LOAD POINT HEIGHT   | HORIZONTAL DISTANCE FROM CENTERLINE OF ROTATION |                  |                 |                 |                 |                 |
|---|---|------------------|-----------------|-----------------|-----------------|-----------------|
|   | 1.5 m (5 ft.)                                   |                  | 3.0 m (10 ft.)  |                 | 4.5 m (15 ft.)  |                 |
|   | Over Front                                      | Over Side        | Over Front      | Over Side       | Over Front      | Over Side       |
| <i>With 3.67-m (12 ft. 0 in.) boom, 2.12-m (6 ft. 11 in.) arm, and 450-mm (18 in.) rubber crawler pad (steel track shoes with vulcanized rubber pads bonded to top of shoes), with blade on ground and additional counterweight, without bucket</i> |   |                  |                 |                 |                 |                 |
| 4.5 m (15 ft.)  |   |                  |                 |                 | 1559<br>(3,436) | 1559<br>(3,436) |
| 3.0 m (10 ft.)  |   |                  | 1936<br>(4,269) | 1936<br>(4,269) | 1696<br>(3,738) | 1696<br>(3,738) |
| 1.5 m (5 ft.)   |   |                  | 2976<br>(6,560) | 2976<br>(6,560) | 2046<br>(4,511) | 1678<br>(3,699) |
| Ground Line   |   |                  | 3631<br>(8,005) | 2836<br>(6,253) | 2338<br>(5,155) | 1599<br>(3,526) |
| -1.5 m (-5 ft.)   | 3901<br>(8,599)                                 | 3901<br>(8,599)  | 3634<br>(8,011) | 2792<br>(6,155) | 2327<br>(5,131) | 1575<br>(3,472) |
| -3.0 m (-10 ft.)  | 5112<br>(11,269)                                | 5112<br>(11,269) | 2805<br>(6,183) | 2805<br>(6,183) |                 |                 |
| <i>With 3.67-m (12 ft. 0 in.) boom, 2.12-m (6 ft. 11 in.) arm, and 600-mm (24 in.) triple semi-grouser shoes, with blade on ground and additional counterweight, without bucket</i>   |   |                  |                 |                 |                 |                 |
| 4.5 m (15 ft.)  |   |                  |                 |                 | 1559<br>(3,436) | 1559<br>(3,436) |
| 3.0 m (10 ft.)  |   |                  | 1936<br>(4,269) | 1936<br>(4,269) | 1696<br>(3,738) | 1696<br>(3,738) |
| 1.5 m (5 ft.)   |   |                  | 2976<br>(6,560) | 2976<br>(6,560) | 2046<br>(4,511) | 1705<br>(3,758) |
| Ground Line   |   |                  | 3631<br>(8,005) | 2882<br>(6,353) | 2338<br>(5,155) | 1626<br>(3,585) |
| -1.5 m (-5 ft.)   | 3901<br>(8,599)                                 | 3901<br>(8,599)  | 3634<br>(8,011) | 2838<br>(6,256) | 2327<br>(5,131) | 1601<br>(3,530) |
| -3.0 m (-10 ft.)  | 5112<br>(11,269)                                | 5112<br>(11,269) | 2805<br>(6,183) | 2805<br>(6,183) |                 |                 |

Buckets

A full line of buckets is offered to meet a wide variety of applications. Replaceable cutting edges are available through John Deere Parts. Optional side cutters add 150 mm (6 in.) to bucket widths.

| Type Bucket | Bucket Width |     | Bucket Capacity |         | Bucket Weight |     | Bucket Dig Force (ISO) |        | Arm Dig Force (ISO) |       | Bucket Tip Radius |       | Number of Teeth |
|-------------|--------------|-----|-----------------|---------|---------------|-----|------------------------|--------|---------------------|-------|-------------------|-------|-----------------|
|             | mm           | in. | m <sup>3</sup>  | cu. yd. | kg            | lb. | kN                     | lb.    | kN                  | lb.   | mm                | in.   |                 |
| Heavy Duty  | 610          | 24  | 0.24            | 0.31    | 268           | 591 | 58                     | 13,039 | 35                  | 7,868 | 883               | 34.76 | 5               |
|             | 762          | 30  | 0.31            | 0.41    | 313           | 691 | 58                     | 13,039 | 35                  | 7,868 | 883               | 34.76 | 6               |
|             | 914          | 36  | 0.39            | 0.51    | 358           | 790 | 58                     | 13,039 | 35                  | 7,868 | 883               | 34.76 | 7               |
| Ditching    | 1219         | 48  | 0.49            | 0.64    | 330           | 727 | 69                     | 15,512 | 37                  | 8,318 | 907               | 35.69 | 0               |

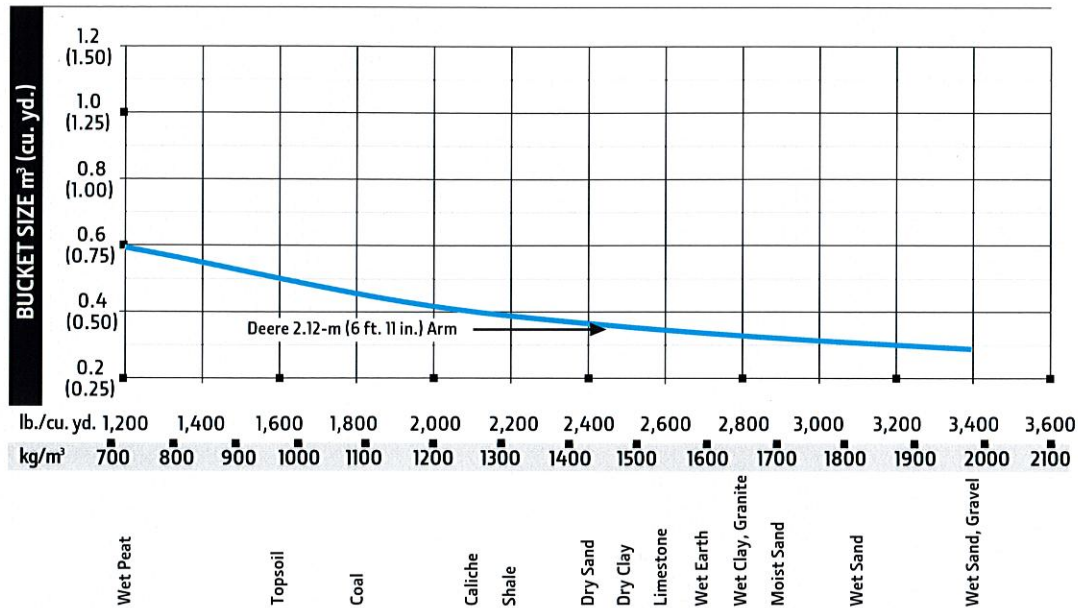


# 75 P-TIER

While general information, pictures, and descriptions are provided, some illustrations and text may include product options and accessories NOT AVAILABLE in all regions, and in some countries products and accessories may require modifications or additions to ensure compliance with the local regulations of those countries.

## Bucket Selection Guide\*

## 75 P-TIER



\*Contact your John Deere dealer for optimum bucket and attachment selections. These recommendations are for general conditions and average use. Does not include optional equipment such as thumbs or couplers. Larger buckets may be possible when using light materials, for flat and level operations, less compacted materials, and volume loading applications such as mass-excavation applications in ideal conditions. Smaller buckets are recommended for adverse conditions such as off-level applications, rocks, and uneven surfaces. Bucket capacity indicated is SAE heaped.

# Additional equipment

Key: ● Standard ▲ Optional or special  
See your John Deere dealer for further information.

|   |   |   |
|---|---|---|
| <b>75 P Engine</b> <ul style="list-style-type: none"> <li>● Auto-idle system</li> <li>● Batteries (2 – 12 volt)</li> <li>● Coolant recovery tank</li> <li>● Single-element air filter</li> <li>● Electronic engine control</li> <li>● Enclosed fan guard (conforms to SAE J1308)</li> <li>● Engine coolant to –37 deg. C (–34 deg. F)</li> <li>● Fuel filter with water separator</li> <li>● Full-flow oil filter</li> <li>● Radiator and oil cooler with dust-protective net</li> <li>● Glow-plug start aid</li> <li>● 500-hour engine oil-change interval</li> <li>● 70% (35 deg.) off-level capacity</li> <li>● Isolation mounted</li> </ul>   | <b>75 P Upperstructure</b> <ul style="list-style-type: none"> <li>● Counterweight, 1165 kg (2,568 lb.)</li> <li>● Right- and left-hand mirrors</li> <li>● Vandal locks with ignition key: Cab door / Engine hood / Fuel cap / Service doors</li> <li>● Remote-mounted fuel filters</li> </ul> <b>Front Attachments*</b> <ul style="list-style-type: none"> <li>● Centralized lubrication system</li> <li>● Dirt seals on all bucket pins</li> <li>● Oil-impregnated bushings</li> <li>● Reinforced resin thrust plates</li> <li>● Tungsten carbide thermal coating on arm-to-bucket joint</li> <li>● Arm, 2.12 m (6 ft. 11 in.)</li> <li>▲ Attachment quick-couplers</li> <li>▲ Buckets: Ditching / Heavy duty / Heavy-duty high capacity / Side cutters and teeth</li> <li>● Thumb bracket</li> <li>● Attachment modes and adjustment in main monitor</li> </ul> <b>Operator's Station</b> <ul style="list-style-type: none"> <li>● Meets ISO 12117-2 for ROPS</li> <li>● Adjustable independent control positions (seat-to-pedals)</li> <li>● AM/FM radio</li> <li>● Auto climate control/air conditioner with heater and pressurizer</li> <li>● Built-in operator's manual storage compartment and manual</li> <li>● Cell-phone power outlet, 12 volt, 60 watt, 5 amp</li> <li>● Coat hook</li> <li>● Deluxe cloth, heated, air-suspension seat with adjustable armrests</li> <li>● Floor mat</li> <li>● Front windshield wiper with intermittent speeds</li> <li>● Gauges (illuminated): Engine coolant / Fuel</li> <li>● Horn, electric</li> <li>● Hour meter, electric</li> <li>● Cell-phone holder, USB port, and Bluetooth® calling and audio</li> <li>● Hydraulic shutoff lever, all controls</li> </ul> | <b>75 P Operator's Station (continued)</b> <ul style="list-style-type: none"> <li>● Hydraulic warm-up control</li> <li>● Interior light</li> <li>● Large cup holder</li> <li>● Machine Information Center (MIC)</li> <li>● Mode selectors (illuminated): Power modes (2) / Travel modes (2 with automatic shift) / Work mode (1)</li> <li>● Multifunction, color LCD monitor with: Diagnostic capability / Multiple-language capabilities / Maintenance tracking / Clock / System monitoring with alarm features: Auto-idle indicator, engine air cleaner restriction indicator light, engine check, engine coolant temperature indicator light with audible alarm, engine oil pressure indicator light with audible alarm, low-alternator-charge indicator light, low-fuel indicator light, fault-code alert indicator, fuel-rate display, wiper-mode indicator, work-lights-on indicator, and work-mode indicator</li> <li>● Motion alarm with cancel switch (conforms to SAE J994)</li> <li>● Auxiliary hydraulic control switches in right console lever</li> <li>● SAE 2-lever control pattern</li> <li>● Seat belt, 51 mm (2 in.), retractable</li> <li>● Tinted glass</li> <li>● Transparent tinted overhead hatch</li> <li>● Hot/cold beverage compartment</li> <li>▲ Seat belt, 76 mm (3 in.), non-retractable</li> <li>▲ Protection screens for cab front, rear, and side</li> <li>▲ Window vandal-protection covers</li> </ul> |
| <b>Hydraulic System</b> <ul style="list-style-type: none"> <li>● Reduced-drift valve for boom down, arm in</li> <li>● Auxiliary hydraulic valve section</li> <li>● Spring-applied, hydraulically released automatic swing brake</li> <li>● 5,000-hour hydraulic oil-change interval</li> <li>● Auxiliary hydraulics with selector valve</li> <li>● Control pattern-change valve</li> <li>▲ Hydraulic filter restriction indicator kit</li> </ul> <b>Undercarriage</b> <ul style="list-style-type: none"> <li>● Planetary drive with axial piston motors</li> <li>● Propel motor shields</li> <li>● Spring-applied, hydraulically released automatic propel brake</li> <li>● 2-speed propel with automatic shift</li> <li>● Upper carrier roller (1)</li> <li>● Sealed and lubricated track chain</li> <li>● Undercarriage with blade</li> <li>▲ Triple semi-grouser shoes, 600 mm (24 in.)</li> <li>▲ Rubber crawler pads, 450 mm (18 in.)</li> <li>● 2-way backfill blade</li> <li>▲ 4-way angle blade with float</li> </ul> |   | <b>Electrical</b> <ul style="list-style-type: none"> <li>● 50-amp alternator</li> <li>● Blade-type multi-fused circuits</li> <li>● Positive-terminal battery covers</li> <li>● Right rear left 270-deg. camera system with LED surround lighting</li> </ul> <b>Lights</b> <ul style="list-style-type: none"> <li>● Work lights: LED / 1 mounted on boom / 1 mounted on frame</li> </ul>   |

While general information, pictures, and descriptions are provided, some illustrations and text may include product options and accessories NOT AVAILABLE in all regions, and in some countries products and accessories may require modifications or additions to ensure compliance with the local regulations of those countries.

Net engine power is with standard equipment including air cleaner, exhaust system, alternator, and cooling fan at test conditions specified per ISO 9249. No derating is required up to 3050-m (10,000 ft.) altitude. Specifications and design subject to change without notice. Wherever applicable, specifications are in accordance with SAE standards. Except where otherwise noted, these specifications are based on a unit with standard equipment, 0.28-m<sup>3</sup> (10.37 cu. yd.), 750-mm (30 in.), 211-kg (465 lb.) bucket; 2.12-m (6 ft. 11 in.) arm; 1165-kg (2,568 lb.) counterweight; full fuel tank; and 75-kg (165 lb.) operator.





ME75PAU (23-08)



**JOHN DEERE**



6801 McFarland Blvd West  
Northport, AL 35476  
205-339-0300

2149 Highway 31 South  
Pelham, AL 35124  
205-988-4474

25135 One Aviation Way SW  
Madison, AL 35756  
256-233-1914

2255 Highway 21 South  
Oxford, AL 36203  
256-831-0921

4308 Water Trail  
Graysville, AL 35073  
205-988-4472

3540 Wetumpka Highway  
PO Box 210278, Montgomery,  
AL 36  
334-277-7260

[www.warriortractor.com](http://www.warriortractor.com)

M1425

